

1 **Supplementary Materials**

2

3 **Results**

4 **Table S1. Data summary of direct antigen rapid test (DART) for detection of SARS-CoV-2**
5 **nucleocapsid protein and DART for detection of SARS-CoV-2 spike glycoprotein**
6 **performance in comparison to qRT-PCR results.**

7

8 **Table S2. Summary of results of COVID-19 outcomes in 3 US Regions and Brazil as a result**
9 **of Frequent Rapid Testing Protocol using SIDHRE-Q Model.** Total Infected, Maximum
10 Hospitalized, and Total Deaths are shown for Massachusetts, Los Angeles, New York, and São
11 Jose do Rio Preto, Brazil under a qRT-PCR protocol (symptomatic testing) and a Rapid Testing
12 protocol (once every three days with test performance of 80% sensitivity and 90% specificity).

13

14 **Table S3. Demographic and clinical summary of patients evaluated by the SARS-CoV-2**
15 **Direct Antigen Rapid Test (DART).** N response, N or mean of positive, and % or standard
16 deviation for each group is presented. All samples (n=131) collected and tested in São José do
17 Rio Preto, Brazil.

18

19 **Figure S1. Graphical scheme displaying the relationships between the stages of quarantine**
20 **and infection in *SIDHRE-Q* model: Q-U, quarantine uninfected; S, susceptible (uninfected); I,**
21 **infected undetected (pre-testing and infected); D, infected detected (infection diagnosis through**
22 **testing); H, hospitalized (infected with life threatening symptom progression); R, recovered**

23 (healed); **E**, extinct (dead); and **Q-R**, quarantine recovered (healed but in quarantine by false
24 positive testing).

25

26 **Figure S2. COVID-19 Outcomes as a result of Frequent Rapid Testing Protocol with**
27 **variable test performances using *SIDHRE-Q* Model.** The Cumulative Detected Infected,
28 Hospitalized, Deceased, Active Infections, Recovered, and Quarantined are modeled over 105
29 days (top to bottom) using reported data from 4 global regions: Massachusetts, Los Angeles,
30 New York City, and São José do Rio Preto in Brazil (left to right). The COVID-19 population
31 spread and outcomes are modeled under a Rapid Testing Protocol with variable testing
32 frequencies ranging from 1-21 days between tests, and variable test performances: 90%
33 specificity with 90% sensitivity (A), 70% sensitivity (B), 50% sensitivity (C), and 30%
34 sensitivity (D); and 80% specificity with 90% sensitivity (E), 70% sensitivity (F), 50%
35 sensitivity (G), and 30% sensitivity (H). This protocol is compared to a symptom-based Rapid
36 Testing protocol and a symptom-based qRT-PCR protocol.

37

38 **Figure S3. Effect of Rapid Testing Protocol under variable testing sensitivities and**
39 **increasing frequency under the *SIDHRE-Q* Model.** The Cumulative Infections, Maximum
40 Simultaneously Hospitalized, and Deceased populations are modeled for Massachusetts, Los
41 Angeles, New York City, and São José do Rio Preto in Brazil. The effect of increasing frequency
42 of testing is modeled for various testing sensitivities (30%-90%) with an 80% specificity.

43

44 **Figure S4. Effect of County Based Rapid Testing strategy on COVID-19 outcomes in**
45 **California.** This protocol varies testing frequency in accordance to the number of recorded

46 cases; the threshold for number of active infections which, if reached, signals to commence
47 everyday testing, the highest frequency considered. A Rapid Test with a 80% sensitivity and
48 90% sensitivity is used in this deployment strategy. Shown is the total cost per person per day
49 versus the cumulative infections, maximum simultaneously hospitalized, and cumulative deaths
50 with varied thresholds for all of CA is shown. The County Based Rapid Testing strategy is
51 compared to uniform testing, which distributes the same number of total tests used in the county
52 strategy, albeit evenly across each county. The effects of uniform testing are modeled for both a
53 Rapid Testing protocol and a qRT-PCR protocol.

54

55 **Figure S5. Time series of the four fitted parameters α , ν , μ , and τ (left to right) for MA, LA,**
56 **NYC, and SJRP (top to bottom).** See Table 2 in the Methods section for an explanation of the
57 parameters. The values are extracted every seven days from data provided by the respective
58 regions. The parameters vary significantly over time and location. Flat points occur during the
59 seven day windows where the parameters are held constant. The fitting procedure is also outlined
60 in the Methods section.

61

62

63 **Figure S6. Time series of the three fitted pieces of data Cumulative Cases, Daily**
64 **Hospitalized, and Cumulative Deaths (left to right) for each county receiving testing in CA;**
65 **Ventura (2A), Stanislaus (2B), Santa Clara (2C), San Joaquin (2D), San Francisco (2E), San**
66 **Diego (2F), San Bernardino (2G), Sacramento (2H), Orange (2I), Los Angeles (2J), Kern (2K),**
67 **Fresno (2L), Alameda (2M).** The counties included satisfy two requirements: population greater

68 than 1.5% of the total CA population and nonzero total number of deaths at each point in time.

69 The fitting procedure is outlined in the Methods section.

70

71

72

73

74

75

76

77

78

79

80

81

82

83

84

85

86

87

88

89

90

91 **Supplementary Tables**

92

93 **Table S1. Data summary of direct antigen rapid test (DART) for detection of SARS-CoV-2**
94 **nucleocapsid protein and DART for detection of SARS-CoV-2 spike glycoprotein**
95 **performance in comparison to qRT-PCR results.**

96

97

98

99

	Cycle threshold (Ct) value	Total Cases	DART Positives	DART Negatives	Sensitivity	95% Confidence Interval (semi-interval)	Specificity	95% Confidence Interval (semi-interval)	Positive Predictive Value (PPV)	Negative Predictive Value (NPV)	Prevalence	Overall Agreement
DART (nucleocapsid protein)	< 20	114	24	90	95.8%	4.6%	91.1%	2.9%	74.2%	98.8%	21.1%	92.1%
	< 25	143	53	90	90.6%	3.9%	91.1%	2.9%	85.7%	94.3%	37.1%	90.9%
SARS-CoV-2 (Gene Average)	< 30	168	78	90	83.3%	4.1%	91.1%	2.9%	89.0%	86.3%	46.4%	87.5%
	< 35	189	99	90	79.8%	3.9%	91.1%	2.9%	90.8%	80.4%	52.4%	85.2%
	< 40	190	100	90	80.0%	3.9%	91.1%	2.9%	90.9%	80.4%	52.6%	85.3%
DART (spike glycoprotein)	< 10	51	2	49	100.0%	20.9%	85.7%	4.9%	22.2%	98.9%	3.9%	86.3%
	< 15	72	23	49	100.0%	2.8%	85.7%	4.9%	76.7%	98.9%	31.9%	90.3%
SARS-CoV-2 (Gene Average)	< 20	90	41	49	97.6%	2.8%	85.7%	4.9%	85.1%	96.6%	45.6%	91.1%
	< 25	111	62	49	91.9%	3.4%	85.7%	4.9%	89.1%	89.4%	55.9%	89.2%
DART (spike glycoprotein)	< 30	121	72	49	84.7%	4.1%	85.7%	4.9%	89.7%	79.2%	59.5%	85.1%
	< 35	121	72	49	84.7%	4.1%	85.7%	4.9%	89.7%	79.2%	59.5%	85.1%

101 **Table S2. Summary of results of COVID-19 outcomes in 3 US Regions and Brazil as a result**
 102 **of Frequent Rapid Testing Protocol using SIDHRE-Q Model.** Total Infected, Maximum
 103 Hospitalized, and Total Deaths are shown for Massachusetts, Los Angeles, New York, and São
 104 Jose do Rio Preto, Brazil under a qRT-PCR protocol (symptomatic testing) and a Rapid Testing
 105 protocol (once every three days with test performance of 80% sensitivity and 90% specificity).

106

	Massachusetts		Los Angeles		New York City		São José do Rio Preto, Brazil	
	qRT-PCR	1 per 3 days	qRT-PCR	1 per 3 days	qRT-PCR	1 per 3 days	qRT-PCR	1 per 3 days
Total Infected	18.40%	1.60%	11.70%	1.42%	26.40%	9.45%	11.70%	0.186%
Max Hospitalized	0.056%	0.025%	0.028%	0.022%	0.144%	0.130%	0.054%	0.003%
Total Deaths	0.119%	0.029%	0.039%	0.009%	0.226%	0.157%	0.040%	0.003%

107

108

109

110

111

112

113

114

115

116

117

118

119

120 **Table S3**

121 **Table S3. Demographic and clinical summary of patients evaluated by the SARS-CoV-2 Direct**
 122 **Antigen Rapid Test (DART).** N response, N or mean of positive, and % or standard deviation for each
 123 group is presented. All samples (n=131) collected and tested in São José do Rio Preto, Brazil.

124

	TOTAL			COVID-19 positive			COVID-19 negative		
	N response	N or mean of positive	% or standard deviation	N response	N or mean of positive	% or standard deviation	N response	mean of positive	% or standard deviation
Age	121	40.43	17.17	72	43.37	12.58	49	36.12	15.3
0-14 yr	121	5	4.1%	72	2	2.8%	49	3	6.1%
15-29 yr	121	30	24.8%	72	17	23.6%	49	13	26.5%
30-59 yr	121	69	57.0%	72	39	54.2%	49	30	61.2%
≥60 yr	121	17	14.0%	72	14	19.4%	49	3	6.1%
Gender									
Female	121	75	62.0%	72	43	59.7%	49	32	65.3%
Male	121	46	38.0%	72	29	40.3%	49	17	34.7%
Comorbidities									
Cardiovascular disease	115	7	6.1%	71	6	8.5%	44	1	2.3%
Diabetes	115	9	7.8%	71	6	8.5%	44	3	6.8%
Asthma	115	1	0.9%	71	1	1.4%	44	0	0.0%
Pulmonary disease	115	4	3.5%	71	1	1.4%	44	3	6.8%
Chronic Kidney disease (Stage III, IV, V)	115	12	10.4%	71	1	1.4%	44	11	25.0%
Immunosuppression	115	3	2.6%	71	1	1.4%	44	0	0.0%
Post pregnant	115	2	1.7%	71	1	1.4%	44	1	2.3%
Neurologic Disease	115	0	0.0%	71	0	0.0%	44	0	0.0%
Chromosomal disease	115	0	0.0%	71	0	0.0%	44	0	0.0%
Hematological diseases	115	0	0.0%	71	0	0.0%	44	0	0.0%
Liver disease	115	0	0.0%	71	0	0.0%	44	0	0.0%
Obesity	115	0	0.0%	71	0	0.0%	44	0	0.0%
Hospitalization	116	5	4.3%	71	5	7.0%	45	0	0.0%
Asymptomatic	116	8	6.9%	71	6	8.5%	45	2	4.4%
Initial symptoms									
Fever	116	40	34.5%	71	32	45.1%	45	8	17.8%
Cough	116	66	56.9%	71	42	59.2%	45	24	53.3%
Sore throat	116	47	40.5%	71	22	31.0%	45	25	55.6%
Dyspnea	116	25	21.6%	71	17	23.9%	45	8	17.8%
Low Saturation	116	4	3.5%	71	4	5.7%	45	0	0.0%
Diarrhea	116	4	3.5%	71	4	5.7%	45	0	0.0%
Vomit	116	3	2.6%	71	2	2.9%	45	1	2.2%
Headache	116	43	37.4%	71	28	40.0%	45	15	33.3%
Days of fever/symptoms	120	3.23	2.64	71	3.29	2.46	49	3.14	2.9

125

126

127

128

129

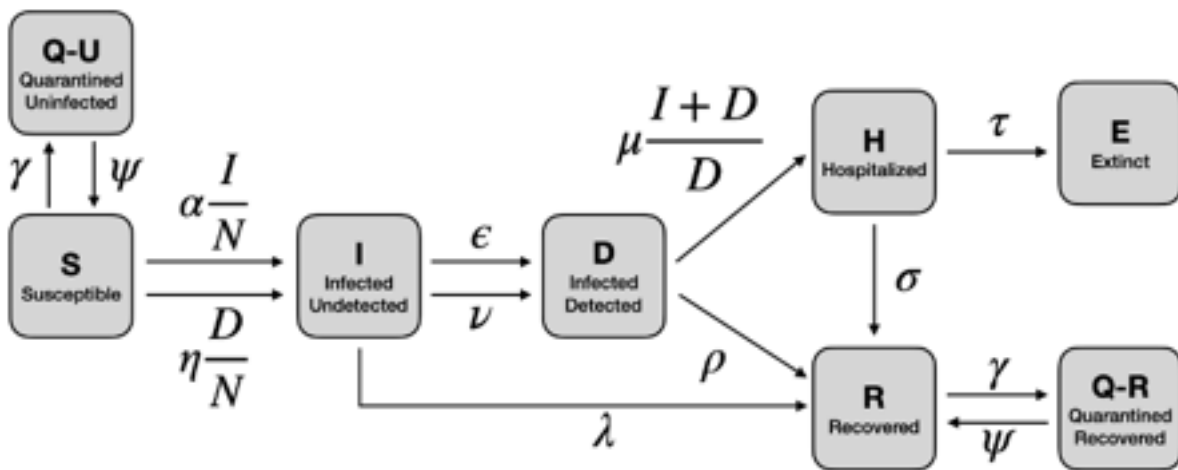
130

131 **Supplementary Figures**

132 **Figure S1**

133 **Figure S1. Graphical scheme displaying the relationships between the stages of quarantine and**
 134 **infection in *SIDHRE-Q* model: Q-U, quarantine uninfected; S, susceptible (uninfected); I, infected**
 135 **undetected (pre-testing and infected); D, infected detected (infection diagnosis through testing); H,**
 136 **hospitalized (infected with life threatening symptom progression); R, recovered (healed); E, extinct**
 137 **(dead); and Q-R, quarantine recovered (healed but in quarantine by false positive testing).**

138



139

140

141

142

143

144

145

146

147

148

149 **Figure S2**

150 **Figure S2. COVID-19 Outcomes as a result of Frequent Rapid Testing Protocol with variable test**
151 **performances using *SIDHRE-Q* Model.** The Cumulative Detected Infected, Hospitalized, Deceased,
152 Active Infections, Recovered, and Quarantined are modeled over 105 days (top to bottom) using reported
153 data from 4 global regions: Massachusetts, Los Angeles, New York City, and São José do Rio Preto in
154 Brazil (left to right). The COVID-19 population spread and outcomes are modeled under a Rapid Testing
155 Protocol with variable testing frequencies ranging from 1-21 days between tests, and variable test
156 performances: 90% specificity with 90% sensitivity (A), 70% sensitivity (B), 50% sensitivity (C), and
157 30% sensitivity (D); and 80% specificity with 90% sensitivity (E), 70% sensitivity (F), 50% sensitivity
158 (G), and 30% sensitivity (H). This protocol is compared to a symptom-based Rapid Testing protocol and
159 a symptom-based qRT-PCR protocol.

160

161

162

163

164

165

166

167

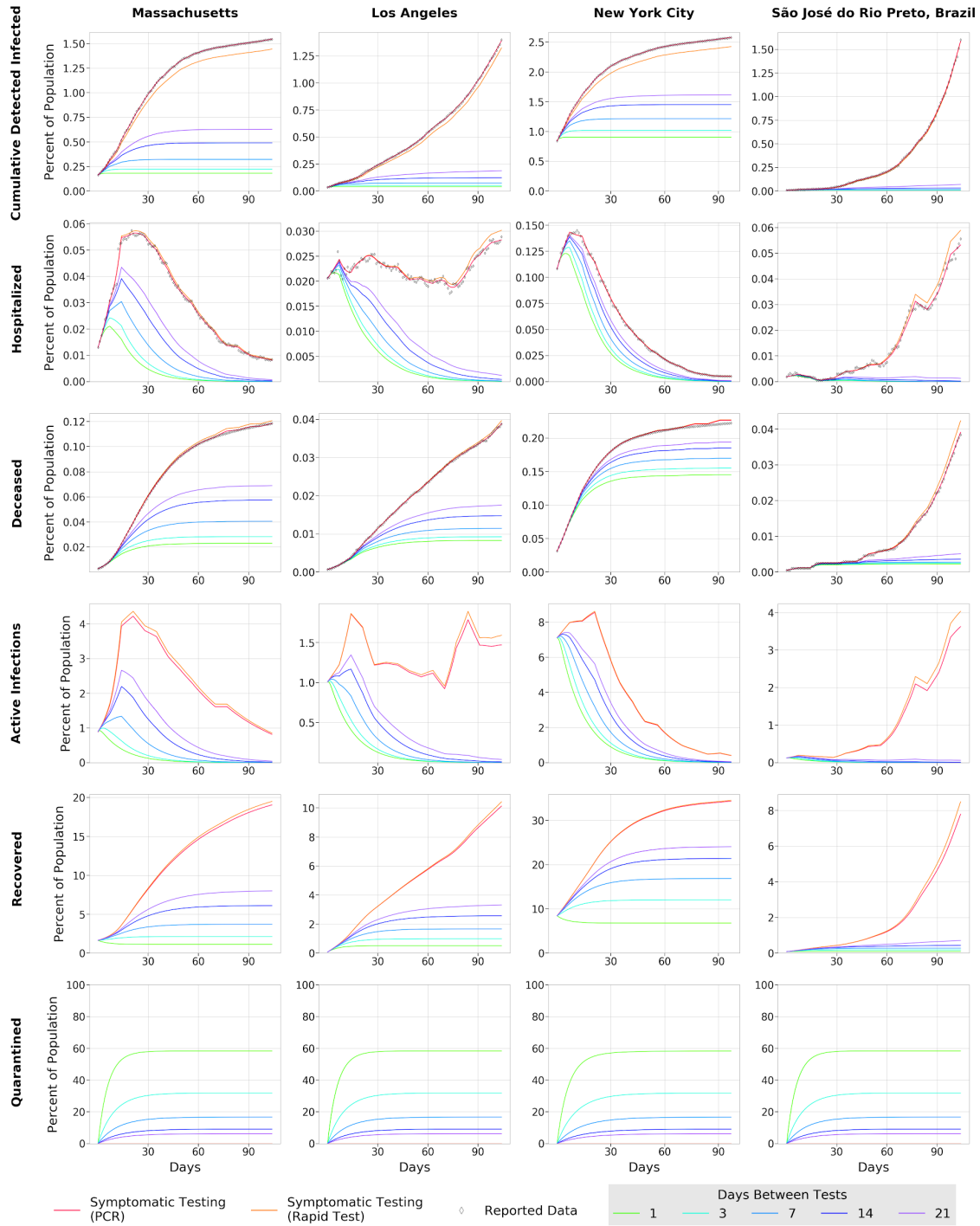
168

169

170

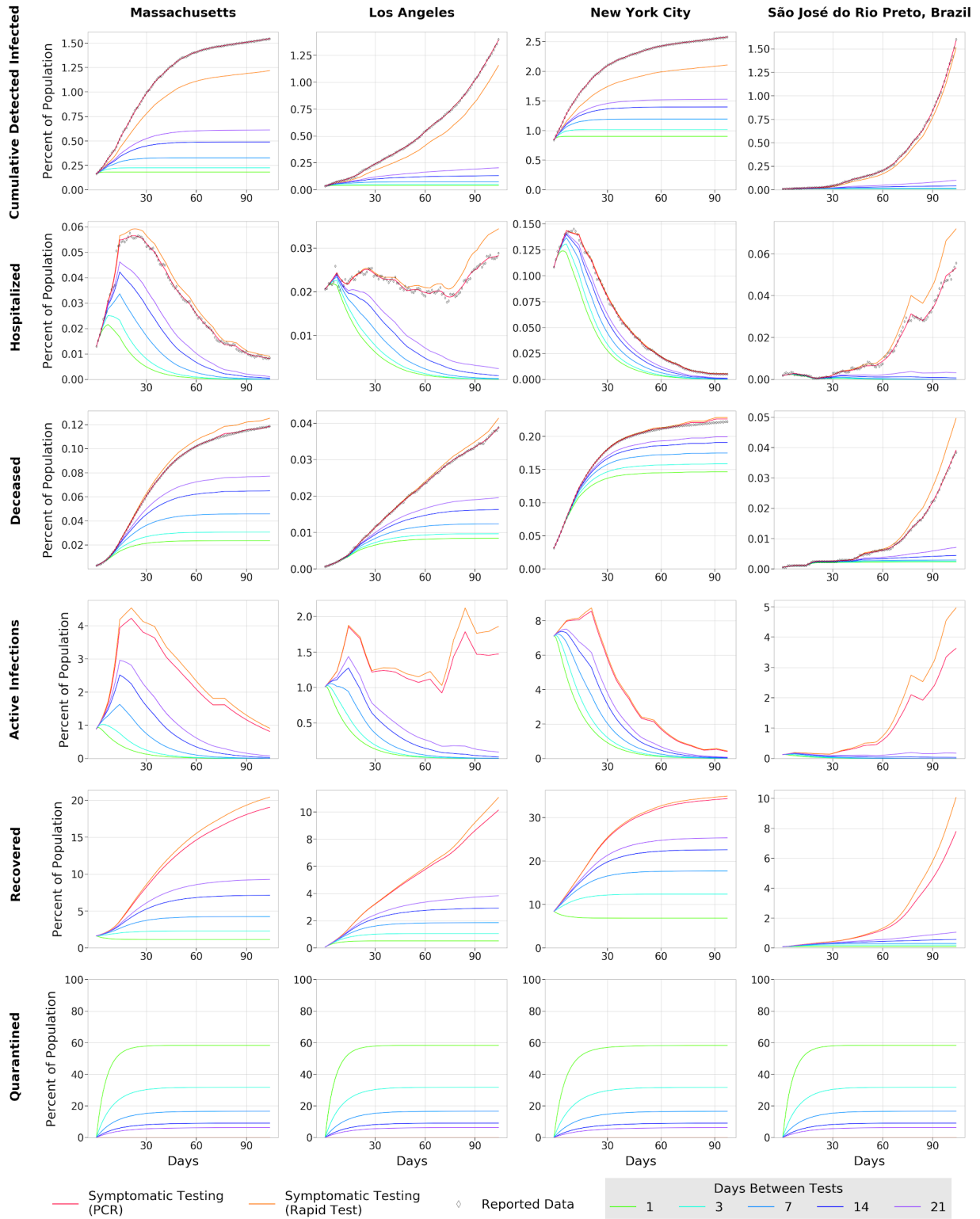
171

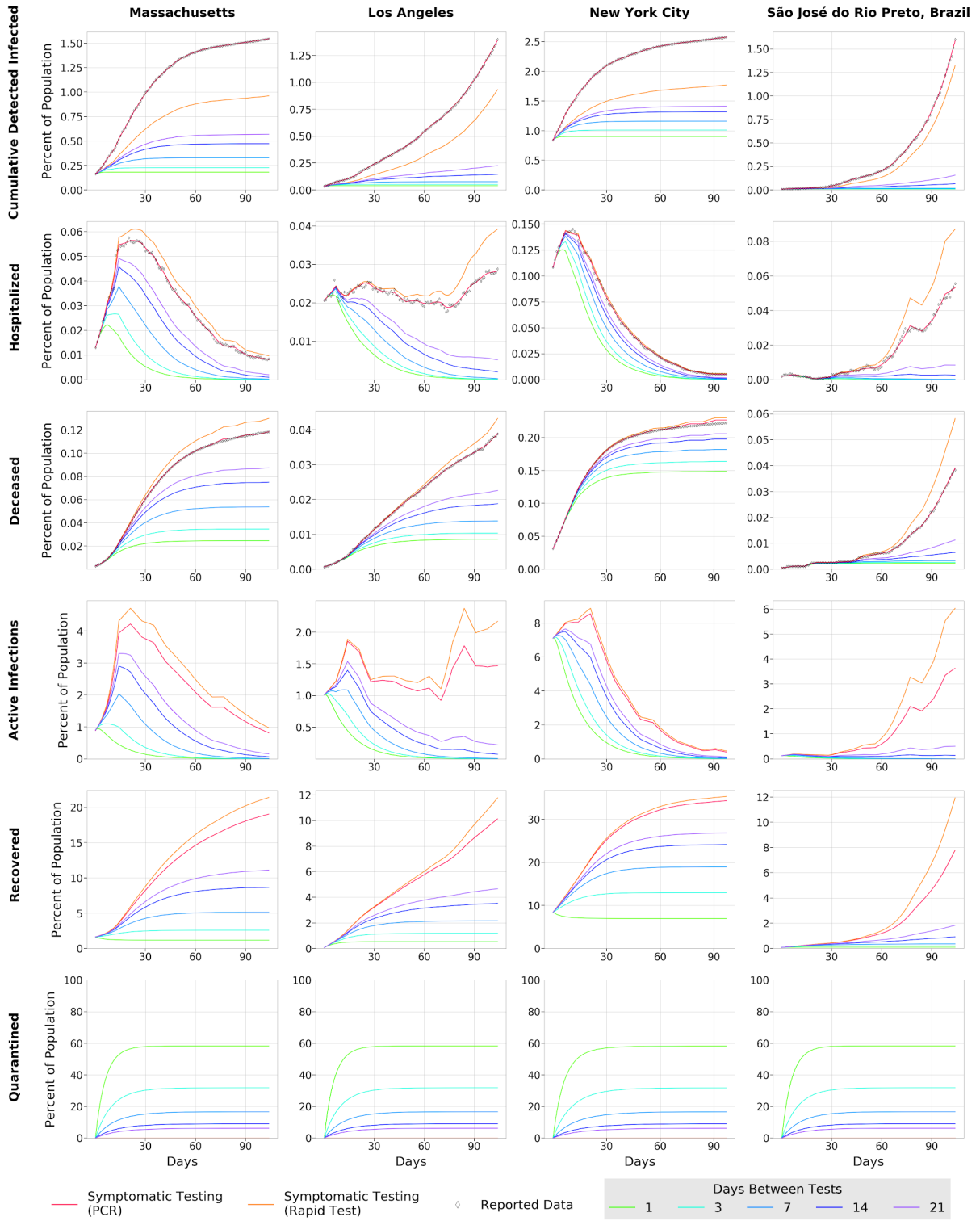
172



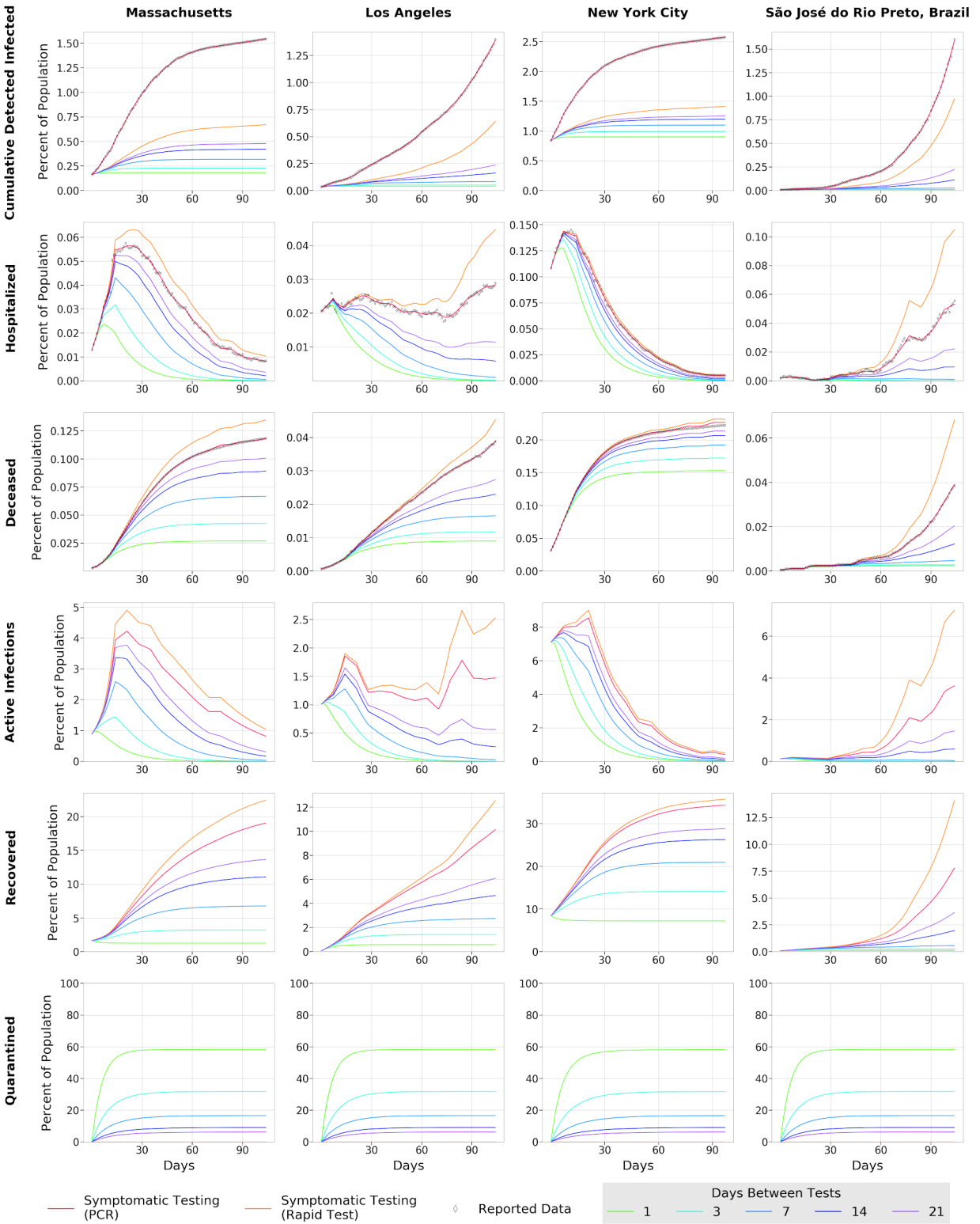
— Symptomatic Testing (PCR) — Symptomatic Testing (Rapid Test) ◊ Reported Data Days Between Tests: 1, 3, 7, 14, 21

Sensitivity: 90.0% Specificity: 90.0%

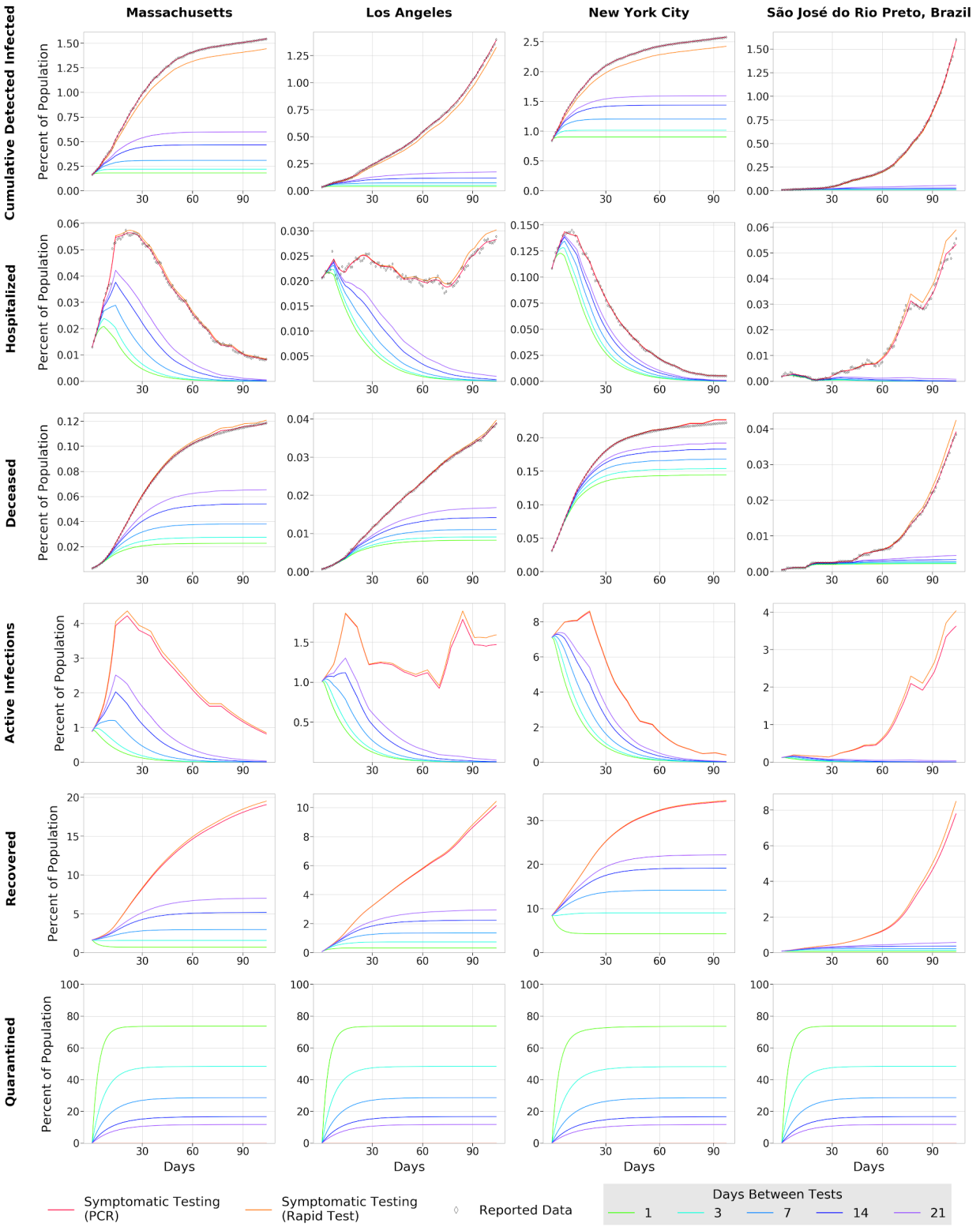




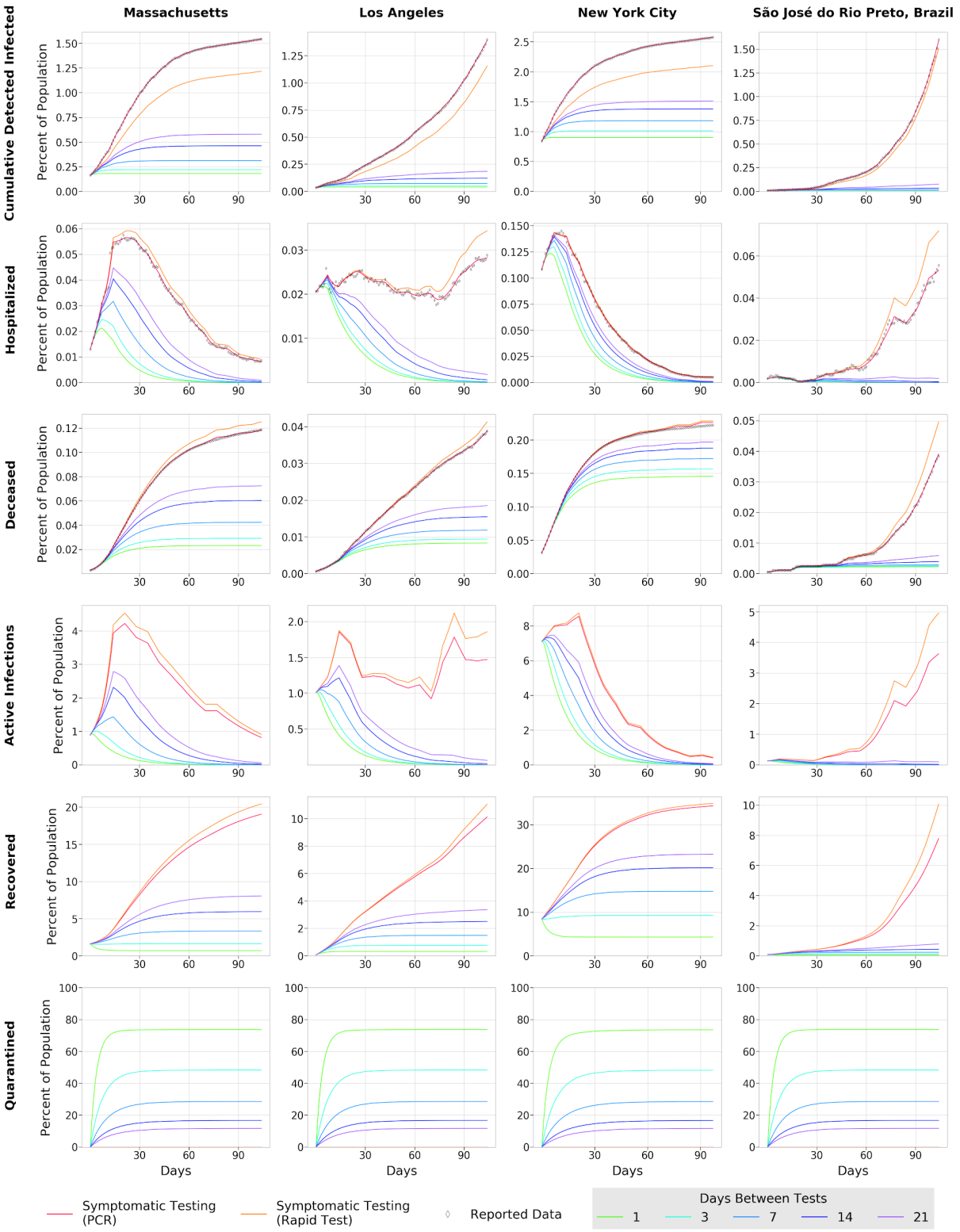
Sensitivity: 50.0% Specificity: 90.0%



Sensitivity: 30.0% Specificity: 90.0%

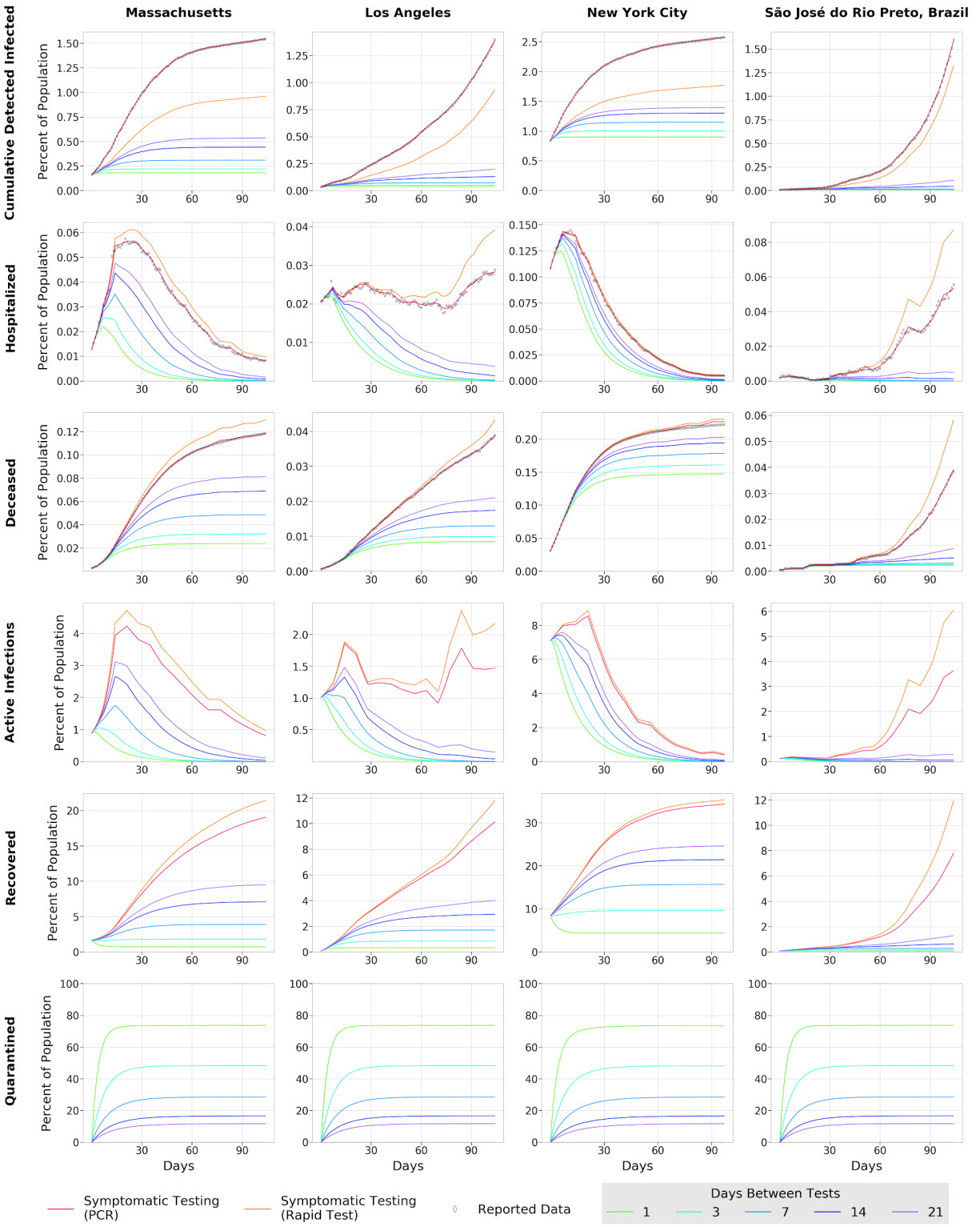


Sensitivity: 90.0% Specificity: 80.0%



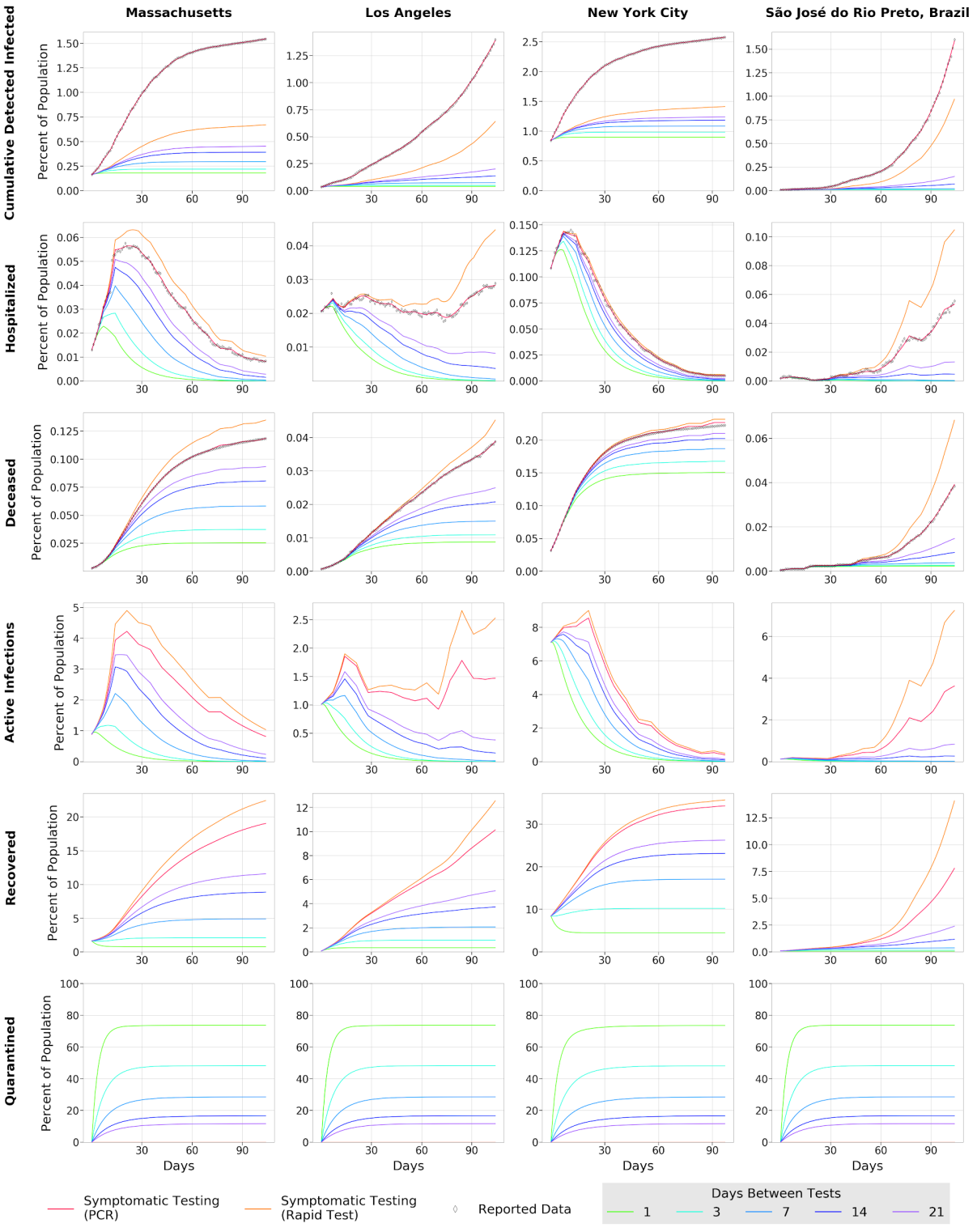
— Symptomatic Testing (PCR) — Symptomatic Testing (Rapid Test) ◇ Reported Data Days Between Tests: 1 (green), 3 (cyan), 7 (blue), 14 (purple), 21 (dark purple)

Sensitivity: 70.0% Specificity: 80.0%



— Symptomatic Testing (PCR) — Symptomatic Testing (Rapid Test) ◇ Reported Data Days Between Tests: 1, 3, 7, 14, 21

Sensitivity: 50.0% Specificity: 80.0%



— Symptomatic Testing (PCR)
 — Symptomatic Testing (Rapid Test)
 ◊ Reported Data
 Days Between Tests:

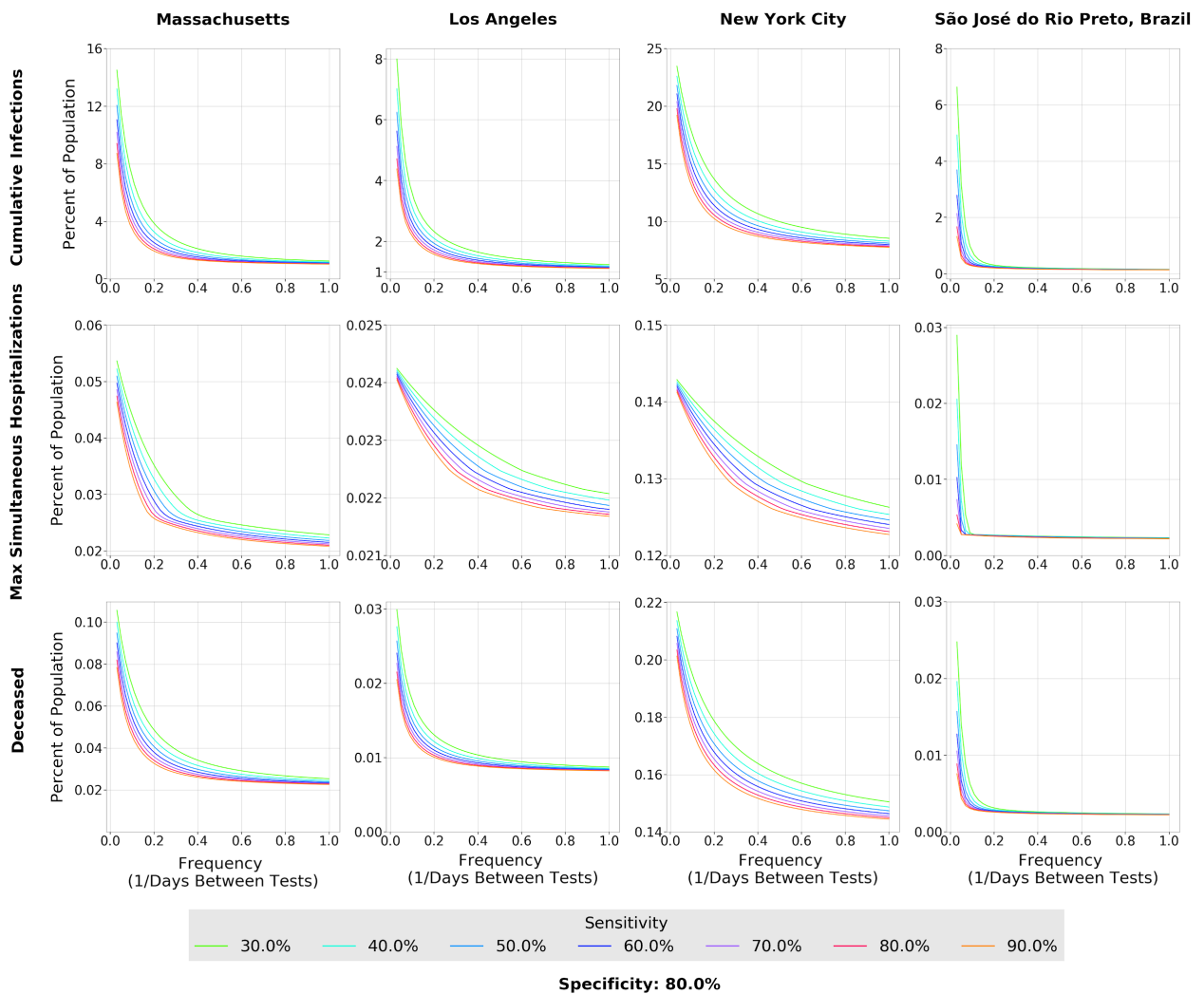
— 1
 — 3
 — 7
 — 14
 — 21

Sensitivity: 30.0% Specificity: 80.0%

190 **Figure S3**

191 **Figure S3. Effect of Rapid Testing Protocol under variable testing sensitivities and increasing**
192 **frequency under the *SIDHRE-Q* Model.** The Cumulative Infections, Maximum Simultaneously
193 Hospitalized, and Deceased populations are modeled for Massachusetts, Los Angeles, New York City,
194 and São José do Rio Preto in Brazil. The effect of increasing frequency of testing is modeled for various
195 testing sensitivities (30%-90%) with an 80% specificity.

196



197

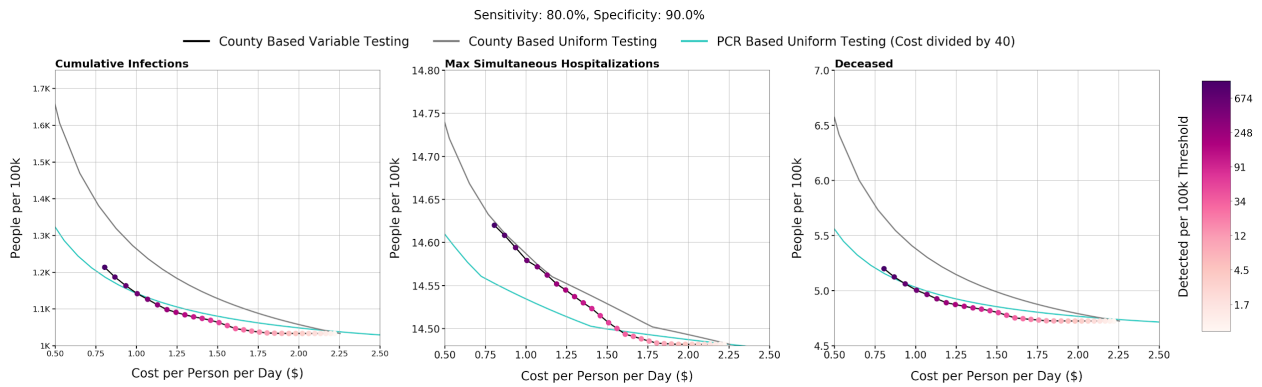
198

199

200 **Figure S4**

201 **Figure S4. Effect of County Based Rapid Testing strategy on COVID-19 outcomes in California.**

202 This protocol varies testing frequency in accordance to the number of recorded cases; the threshold for
203 number of active infections which, if reached, signals to commence everyday testing, the highest
204 frequency considered. A Rapid Test with a 80% sensitivity and 90% sensitivity is used in this deployment
205 strategy. Shown is the total cost per person per day versus the cumulative infections, maximum
206 simultaneously hospitalized, and cumulative deaths with varied thresholds for all of CA is shown. The
207 County Based Rapid Testing strategy is compared to uniform testing, which distributes the same number
208 of total tests used in the county strategy, albeit evenly across each county. The effects of uniform testing
209 are modeled for both a Rapid Testing protocol and a qRT-PCR protocol.
210



211

212

213

214

215

216

217

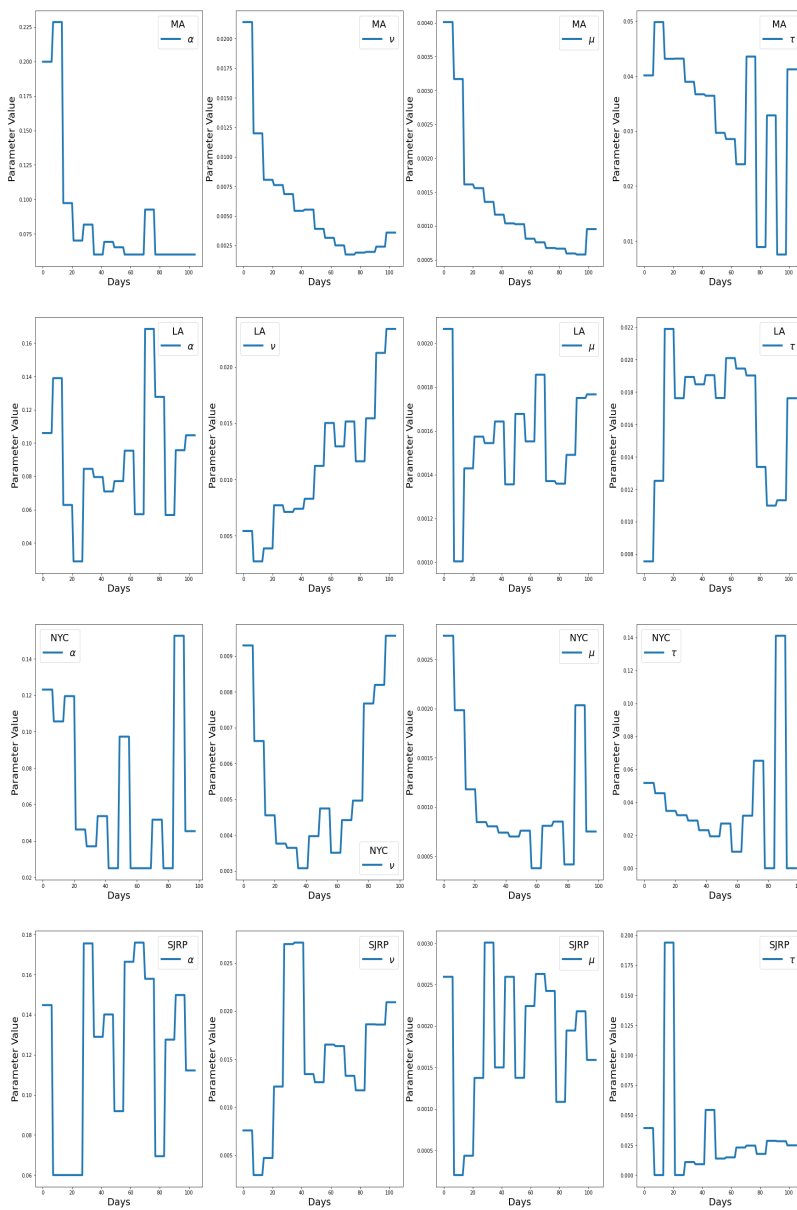
218

219

220 **Figure S5**

221 **Figure S5.** Time series of the four fitted parameters α , ν , μ , and τ (left to right) for MA, LA, NYC, and
222 SJRP (top to bottom). See Table 3 in the Methods section for an explanation of the parameters. The
223 values are extracted every seven days from data provided by the respective regions. The parameters vary
224 significantly over time and location. Flat points occur during the seven day windows where the
225 parameters are held constant. The fitting procedure is also outlined in the Methods section.

226



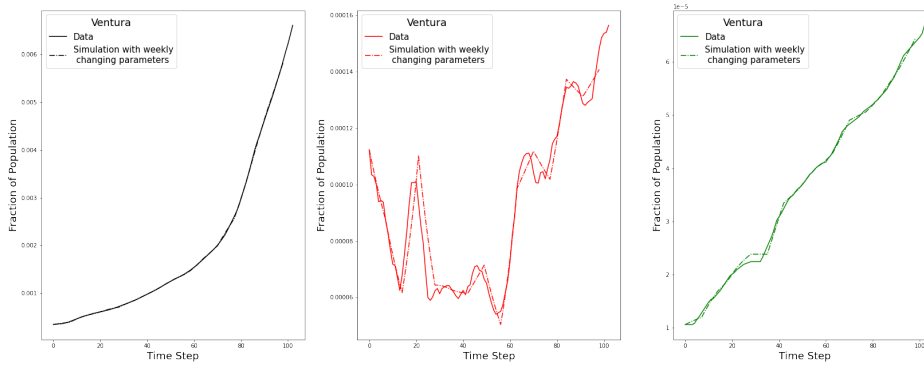
227

228 **Figure S6**

229 **Figure S6.** Time series of the three fitted pieces of data Cumulative Cases, Daily Hospitalized, and
230 Cumulative Deaths (left to right) for each county receiving testing in CA; Ventura (2A), Stanislaus (2B),
231 Santa Clara (2C), San Joaquin (2D), San Francisco (2E), San Diego (2F), San Bernardino (2G),
232 Sacramento (2H), Orange (2I), Los Angeles (2J), Kern (2K), Fresno (2L), Alameda (2M). The counties
233 included satisfy two requirements: population greater than 1.5% of the total CA population and nonzero
234 total number of deaths at each point in time. The fitting procedure is outlined in the Methods section.

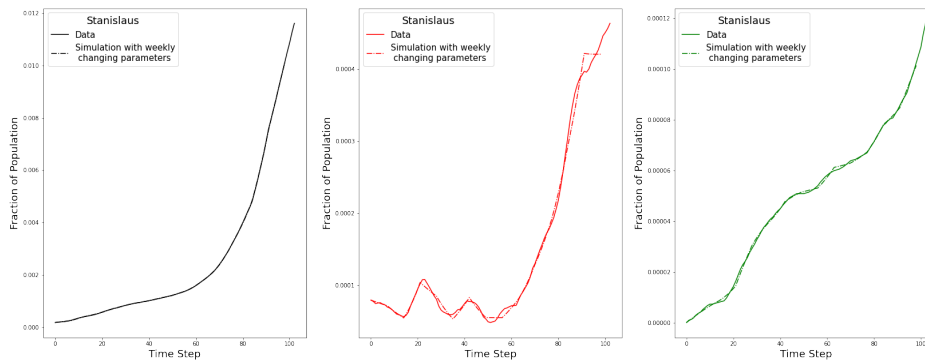
235

236 **A**



237

238 **B**

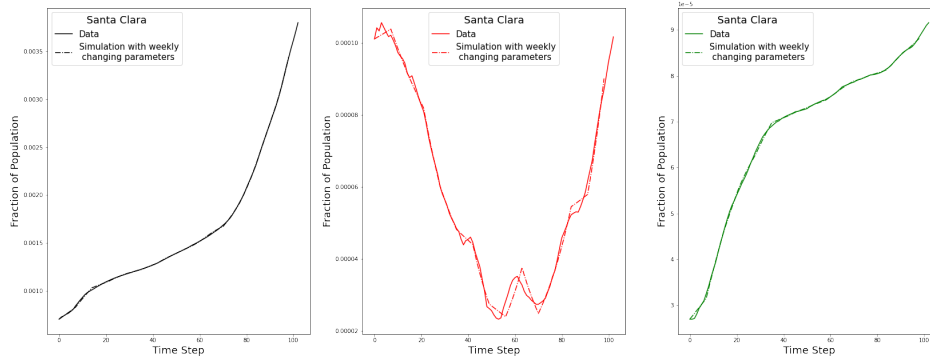


239

240

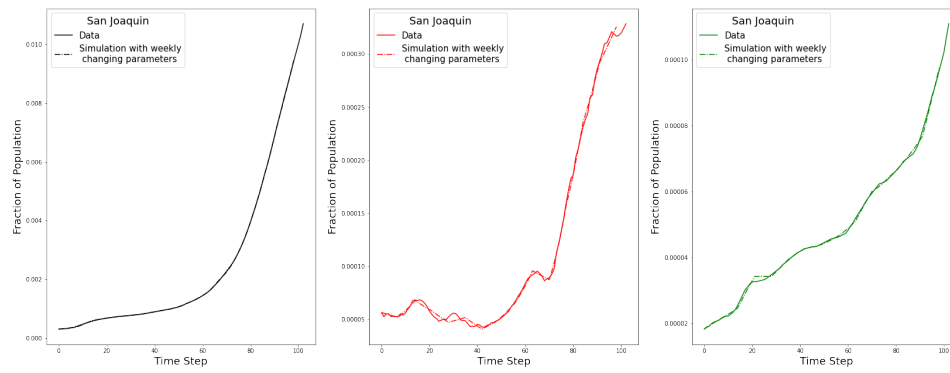
241

242 C



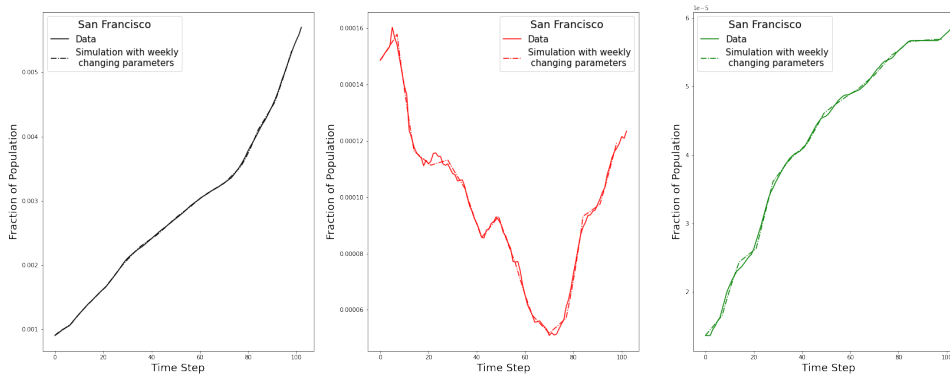
243

244 D



245

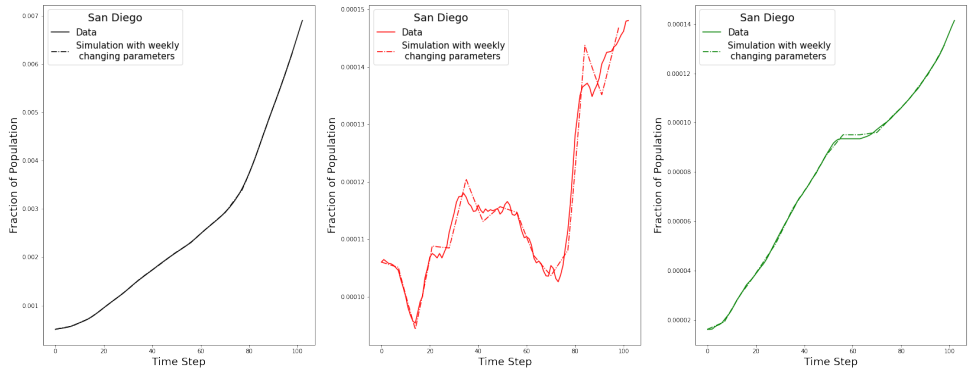
246 E



247

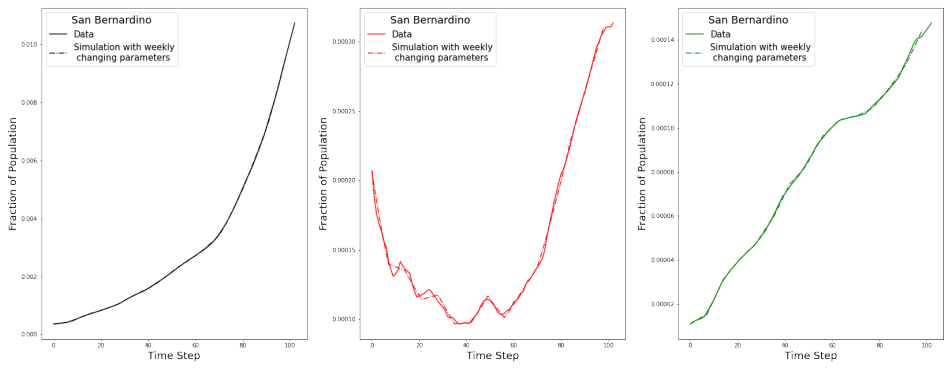
248

249 **F**



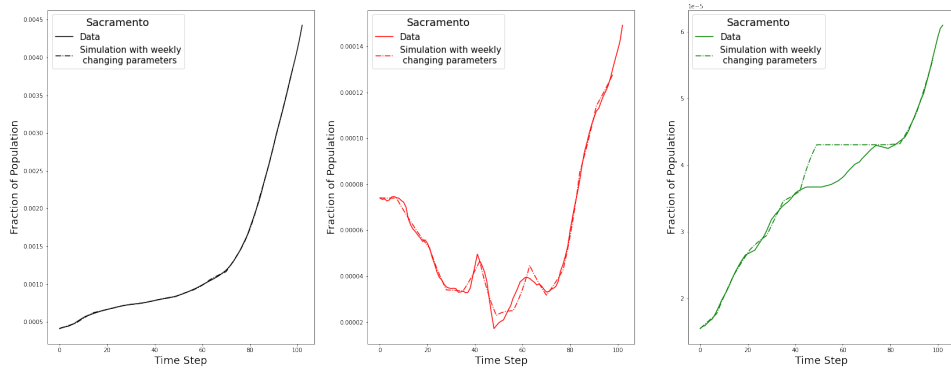
250

251 **G**



252

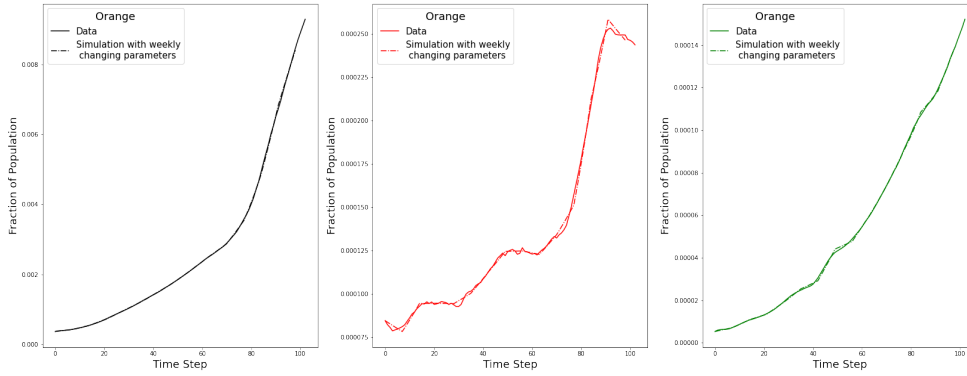
253 **H**



254

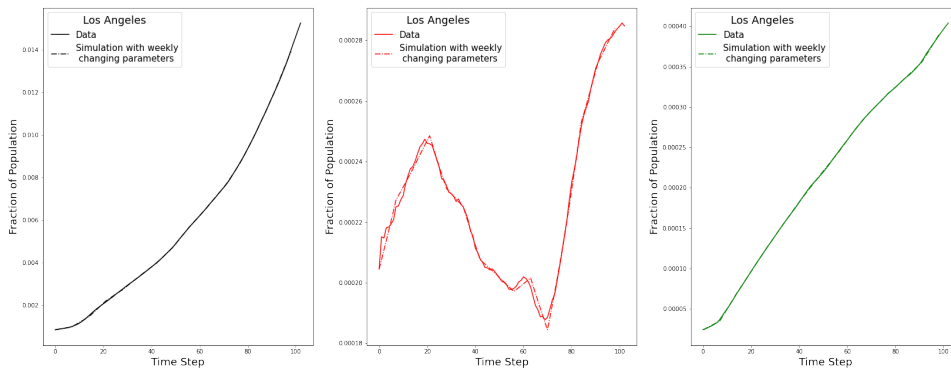
255

256 I



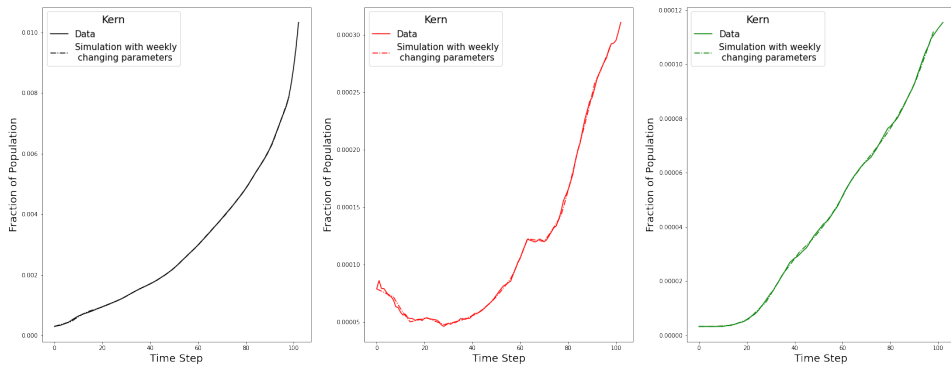
257

258 J



259

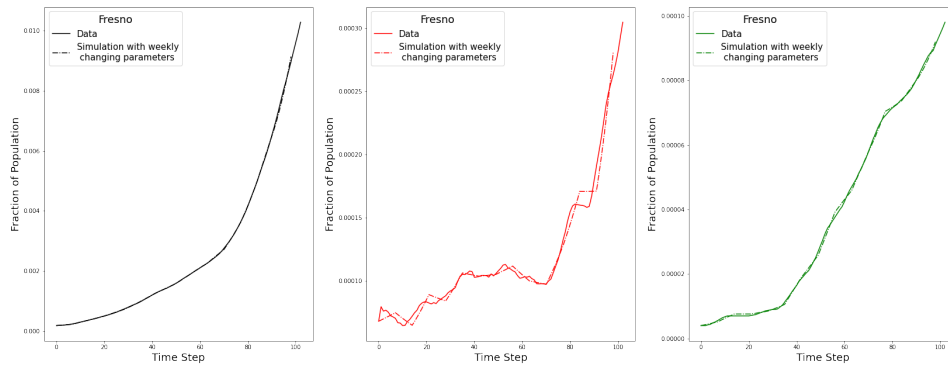
260 K



261

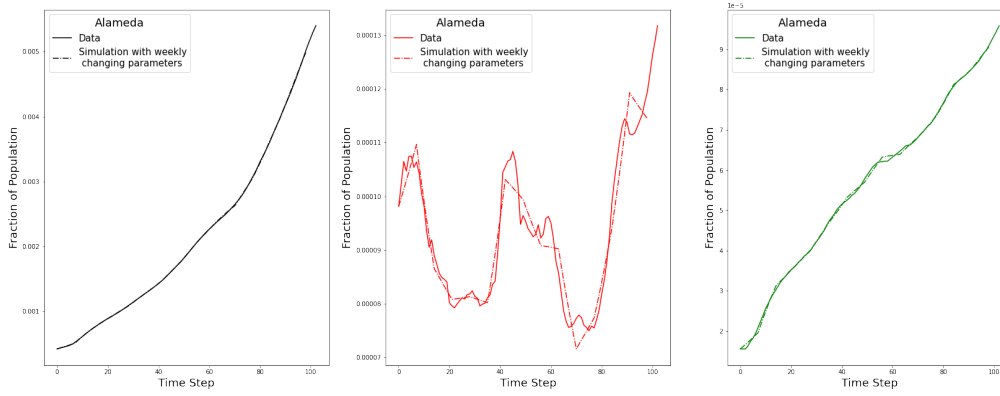
262

263 L



264

265 M



266