

Supplementary Files

Nature contact by window opening and depressive symptoms among Older Adults: A cross-sectional analysis of the Chinese Longitudinal Healthy Longevity Survey

Xurui Jin, Hao Zhang, Yan Zhang, Yu Leng, Yali Zhao, Yi Zeng, Junfeng (Jim) Zhang, Yao Yao

Figure S1..... **Page 2**

Flow Chart of the Inclusion of Participants.

Figure S2..... **Page 3**

Figure S2. Association between Seasonal Window opening Frequency and Depressive Symptom.

Table S1.....**Page 4**

Sensitivity Analysis of Association of Window opening Frequency with Depressive Symptom by Using Different Cut-off Points of CESD-10 to Define Depressive Symptom.

Table S2.....**Page 5**

Sensitivity Analysis of Association of Window opening Frequency with Depressive Symptom by excluding those with Severe Cognitive Impairment.

Table S3.....**Page 6**

Sensitivity Analysis of Association of Window opening Frequency with Depressive Symptom by excluding those who have Changed Their Residential Address in Five Years.

Table S4.....**Page 7**

Sensitivity Analysis of Association of Window opening Frequency with Depressive Symptom by using sample before multiple imputation and adjusting sampling weight.

Table S5.....**Page 8**

Sensitivity Analysis of Association of Opening Window Frequency with Depressive Symptom by excluding those with Comorbidities.

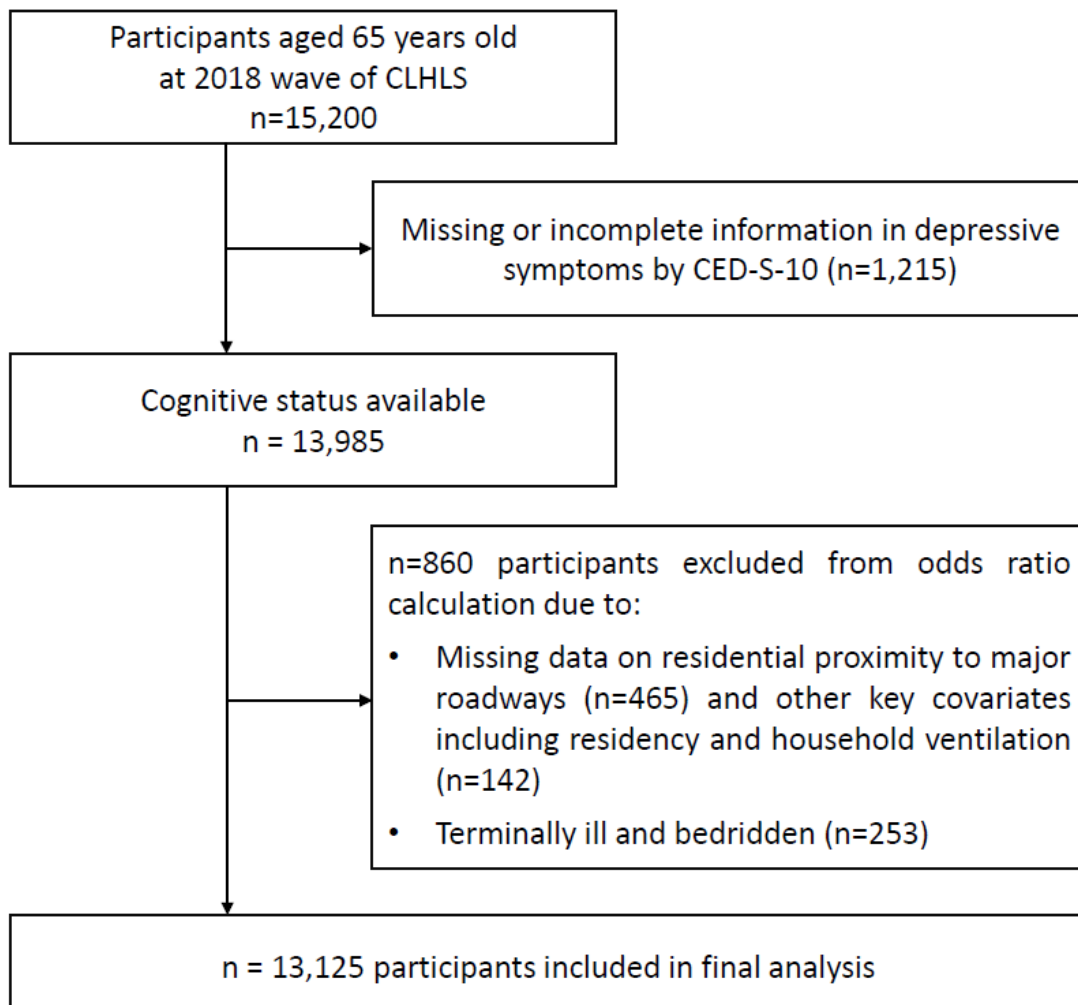


Figure S1. Flow Chart of the Inclusion of Participants.

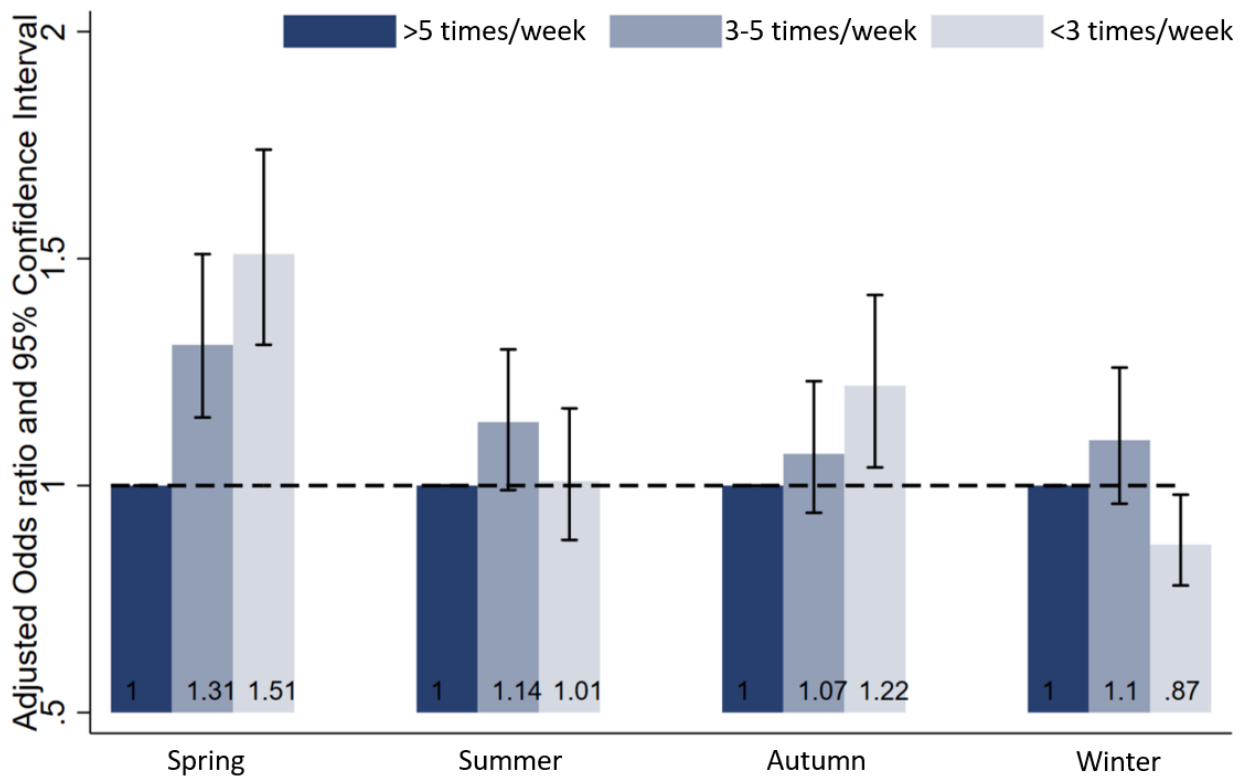


Figure S2. Association between Seasonal Window opening Frequency and Depressive Symptom.

Adjustments: environmental factors (ambient fine particulate exposure, residential greenness exposure, proximity to nearest park, and polluted fuel use) and individual confounders (sex, age, marital status, residency, city population, geographical region, education level, family annual income, medical insurance coverage, tobacco smoking, alcohol consumption, dietary diversity, physical activity, BMI, self-rated health, cognitive function, ADL).

Table S1.**Sensitivity Analysis of Association of Window opening Frequency with Depressive Symptom by Using Different Cut-off Points of CESD-10 to Define Depressive Symptom.**

	Depressive symptom: CESD-10>8	Depressive symptom: CESD-10>12
Natural ventilation frequency	Logistic regression, OR of depressive symptom, (95% CI)	Logistic regression, OR of depressive symptom, (95% CI)
High	Ref.	Ref.
High-medium	1.08 (0.98, 1.20)	1.06 (0.95, 1.19)
Low-medium	1.38 (1.23, 1.54)	1.25 (1.27, 1.59)
Low	1.82 (1.62, 2.04)	1.48 (1.32, 1.66)

Adjustments: environmental factors (ambient fine particulate exposure, residential greenness exposure, proximity to nearest park, and polluted fuel use) and individual confounders (sex, age, marital status, residency, city population, geographical region, education level, family annual income, medical insurance coverage, tobacco smoking, alcohol consumption, dietary diversity, physical activity, BMI, self-rated health, cognitive function, ADL).

Table S2.**Sensitivity Analysis of Association of Window opening Frequency with Depressive Symptom by excluding those with Severe Cognitive Impairment.**

Natural ventilation frequency	Logistic regression, OR of depressive symptom, (95% CI)
High	Ref.
High-medium	1.10 (0.99, 1.13)
Low-medium	1.42 (1.27, 1.59)
Low	1.69 (1.51, 1.90)

Adjustments: environmental factors (ambient fine particulate exposure, residential greenness exposure, proximity to nearest park, and polluted fuel use) and individual confounders (sex, age, marital status, residency, city population, geographical region, education level, family annual income, medical insurance coverage, tobacco smoking, alcohol consumption, dietary diversity, physical activity, BMI, self-rated health, cognitive function, ADL).

Table S3.**Sensitivity Analysis of Association of Window opening Frequency with Depressive Symptom by excluding those who have Changed Their Residential Address in Five Years.**

Natural ventilation frequency	Logistic regression, OR of depressive symptom, (95% CI)
High	Ref.
High-medium	1.12 (1.01, 1.24)
Low-medium	1.42 (1.27, 1.59)
Low	1.69 (1.51, 1.89)

Adjustments: environmental factors (ambient fine particulate exposure, residential greenness exposure, proximity to nearest park, and polluted fuel use) and individual confounders (sex, age, marital status, residency, city population, geographical region, education level, family annual income, medical insurance coverage, tobacco smoking, alcohol consumption, dietary diversity, physical activity, BMI, self-rated health, cognitive function, ADL).

Table S4.**Sensitivity Analysis of Association of Window opening Frequency with Depressive Symptom by using sample before multiple imputation and adjusting sampling weight.**

Natural ventilation frequency	Logistic regression, OR of depressive symptom, (95% CI)
High	Ref.
High-medium	1.08 (0.97, 1.21)
Low-medium	1.46 (1.28, 1.65)
Low	1.66 (1.46, 1.88)

Adjustments: environmental factors (ambient fine particulate exposure, residential greenness exposure, proximity to nearest park, and polluted fuel use), individual confounders (sex, age, marital status, residency, city population, geographical region, education level, family annual income, medical insurance coverage, tobacco smoking, alcohol consumption, dietary diversity, physical activity, BMI, self-rated health, cognitive function, ADL), and sampling weight.

Table S5.**Sensitivity Analysis of Association of Opening Window Frequency with Depressive Symptom by excluding those with Comorbidities.**

Natural ventilation frequency	Logistic regression, OR of depressive symptom, (95% CI)
High	Ref.
High-medium	1.12 (1.01, 1.25)
Low-medium	1.40 (1.25, 1.58)
Low	1.61 (1.43, 1.81)

Adjustments: environmental factors (ambient fine particulate exposure, residential greenness exposure, proximity to nearest park, and polluted fuel use) and individual confounders (sex, age, marital status, residency, city population, geographical region, education level, family annual income, medical insurance coverage, tobacco smoking, alcohol consumption, dietary diversity, physical activity, BMI, self-rated health, cognitive function, ADL).