

SUPPLEMENTARY MATERIAL

Supplement to: Pastor-Barriuso R, Pérez-Gómez B, Hernán MA, et al. Infection fatality risk for SARS-CoV-2: a nationwide seroepidemiological study in the non-institutionalized population of Spain.

Contents	Page
ENE-COVID Study Group	2
Supplementary Methods	7
Supplementary References	11
Supplementary Table 1	19
Supplementary Table 2	20
Supplementary Figure 1	21
Supplementary Figure 2	22

ENE-COVID STUDY GROUP*

* Names listed alphabetically within each institution or regional health service.

Spanish Ministry of Health

Pilar Aparicio Azcárraga; Faustino Blanco; Rodrigo Gutiérrez Fernández; Mariano Martín; Saturnino Mezcua Navarro; Marta Molina; Juan F. Muñoz-Montalvo; Matías Salinero Hernández; Jose L. Sanmartín.

Institute of Health Carlos III

Manuel Cuenca-Estrella; José León Paniagua; Raquel Yotti.

National Center of Epidemiology: Concha Delgado-Sanz, Centro de Investigación Biomédica en Red de Epidemiología y Salud Pública (CIBERESP); Nerea Fernández de Larrea Baz, CIBERESP; Pablo Fernández-Navarro, CIBERESP; Diana Gómez-Barroso, CIBERESP; Amparo Larrauri, CIBERESP; Inmaculada León-Gómez, CIBERESP; Roberto Pastor-Barriuso, CIBERESP; Beatriz Pérez-Gómez, CIBERESP; Marina Pollán, CIBERESP.

National Center of Microbiology: Ana Avellón; Giovanni Fedele; Aurora Fernández-García, CIBERESP; Jesús Oteo Iglesias; María Teresa Pérez Olmeda.

National School of Public Health: Israel Cruz; Maria Elena Fernández Martínez; Francisco D. Rodríguez-Cabrera.

Harvard T.H. Chan School of Public Health

Miguel A. Hernán.

Spanish Regional Health Services

Andalucía

Health Services: Susana Padrones Fernández, Distrito Sanitario Sevilla; José Manuel Rumbao Aguirre, Distrito Sanitario Córdoba Guadalquivir.

Laboratory: José M. Navarro Marí, Hospital Universitario Virgen de las Nieves, Instituto Biosanitario ibs.Granada; Begoña Palop Borrás, Hospital HRU de Málaga; Ana Belén Pérez Jiménez, Hospital Universitario Reina Sofía, Instituto Maimónides de Investigación

Biomédica de Córdoba (IMIBIC); Manuel Rodríguez-Iglesias, Hospital Universitario Puerta del Mar-INIBICA, Cádiz.

Aragón

Health Services: Ana María Calvo Gascón, Servicio Aragonés de Salud; María Luz Lou Alcaine, Gobierno de Aragón.

Asturias

Health Services: Ignacio Donate Suárez, Consejería de Salud; Oscar Suárez Álvarez, Servicio de Salud del Principado de Asturias.

Laboratory: Mercedes Rodríguez Pérez, Hospital Universitario Central de Asturias (HUCA).

Baleares

Health Services: Margarita Cases Sanchís, Servei de Salut de les Illes Balears; Carlos Javier Villafáfila Gomila, Servei de Salut de les Illes Balears.

Laboratory: Lluís Carbo Saladrigas, Hospital Mateu Orfila; Adoración Hurtado Fernández, Hospital Can Misses; Antonio Oliver, Hospital Universitario Son Espases, Instituto de Investigación Sanitaria Illes Balears (IdISBa).

Canarias

Health Services: Elías Castro Feliciano, GSA 112; María Noemí González Quintana, Gestión de Servicios para la Salud y Seguridad en Canarias (GSC).

Laboratory: José María Barrasa Fernández, Hospital Universitario Nuestra Señora de la Candelaria; María Araceli Hernández Betancor, Hospital Universitario Insular de Gran Canaria; Melisa Hernández Febles, Hospital General de Gran Canaria Dr. Negrín; Leopoldo Martín Martín, Hospital de La Palma.

Cantabria

Health Services: Luis-Mariano López López, Servicio Cántabro de Salud; Teresa Ugarte Miota, Servicio Cántabro de Salud.

Laboratory: Inés De Benito Población, Hospital Sierrallana.

Castilla-La Mancha

Health Services: María Sagrario Celada Pérez, Servicio de Salud de Castilla-La Mancha;

María Natalia Vallés Fernández, Servicio de Salud de Castilla-La Mancha.

Castilla y León

Health Services: Tomás Maté Enríquez, Gerencia Regional de Salud de Castilla y León;

Miguel Villa Arranz, Gerencia Regional de Salud de Castilla y León.

Laboratory: Marta Domínguez-Gil González, Hospital Universitario Río Hortega; Isabel

Fernández-Natal, Complejo Asistencial Universitario de León; Gregoria Megías Lobón,

Complejo Asistencial Universitario de Burgos; Juan Luis Muñoz Bellido, Complejo

Asistencial Universitario de Salamanca.

Cataluña

Health Services: Pilar Ciruela, Departament de Salut, CIBERESP; Ariadna Mas i Casals,

Departament de Salut.

Laboratory: Maria Doladé Botías, Laboratorio Clínic Metropolitana Nord, Hospital

Universitari Germans Trias i Pujol; M. Angeles Marcos Maeso, Centro de Diagnóstico

Biomédico, Hospital Clínic de Barcelona; Dúnia Pérez del Campo, Laboratorio Territorial de

Girona.

Comunidad Valenciana

Health Services: Antonio Félix de Castro, Conselleria de Sanitat Universal i Salut Pública;

Ramón Limón Ramírez, Conselleria de Sanitat Universal i Salut Pública.

Extremadura

Health Services: Maria Francisca Elías Retamosa, Servicio Extremeño de Salud; Manuela

Rubio González, Servicio Extremeño de Salud.

Galicia

Health Services: María Sinda Blanco Lobeiras, Sergas; Alberto Fuentes Losada, Consellería de Sanidade.

Laboratory: Antonio Aguilera, Complejo Hospitalario Universitario de Santiago de Compostela (CHUS); German Bou, Hospital Universitario A Coruña.

La Rioja

Health Services: Yolanda Caro, Hospital San Pedro; Noemí Marauri, Atención Primaria.

Laboratory: Luis Miguel Soria Blanco, Hospital San Pedro.

Madrid

Health Services: Isabel del Cura González, Gerencia Asistencial Atención Primaria, Universidad Rey Juan Carlos, Red de Investigación Servicios de Salud en Enfermedades Crónicas (REDISSEC); Montserrat Hernández Pascual, Gerencia Adjunta Procesos Asistenciales Atención Primaria.

Laboratory: Roberto Alonso Fernández, Hospital General Universitario Gregorio Marañón; Paloma Merino-Amador, Hospital Universitario Clínico San Carlos.

Murcia

Health Services: Natalia Cabrera Castro, Consejería de Salud, IMIB-HCUV Arrixaca, Servicio Murciano de Salud; Aurora Tomás Lizcano, Servicio Murciano de Salud.

Laboratory: Cristóbal Ramírez Almagro, Hospital General Universitario Santa Lucía; Manuel Segovia Hernández, Hospital Clínico Universitario Virgen de la Arrixaca, Universidad de Murcia.

Navarra

Health Services: Nieves Ascunce Elizaga, Public Health and Labour Institute of Navarre, CIBERESP; María Ederra Sanz, Public Health and Labour Institute of Navarre, CIBERESP.

Laboratory: Carmen Ezpeleta Baquedano, Complejo Hospitalario de Navarra.

País Vasco

Health Services: Ana Bustinduy Bascaran, Dirección General de Osakidetza; Susana Iglesias Tamayo, Dirección General de Osakidetza.

Laboratory: Luis Elorduy Otazua, Hospital Universitario Cruces.

Ceuta

Health Services: Rebeca Benarroch Benarroch, Consejería de Sanidad, Consumo y Gobernación; Jesús Lopera Flores, Instituto Nacional de Gestión Sanitaria.

Melilla

Health Services: Antonia Vázquez de la Villa, Instituto Nacional de Gestión Sanitaria.

SUPPLEMENTARY METHODS

Adjustment of SARS-CoV-2 seroprevalence for assay sensitivity and specificity

We searched MEDLINE for studies evaluating the diagnostic performance of the CMIA test used in ENE-COVID (SARS-CoV-2 IgG for use with ARCHITECT, Abbott Laboratories), using free text words and MeSH terms “sensitivity”, “specificity”, “immunoassay”, “SARS-CoV-2”, “IgG”, “Abbott”, and “Architect”. We also searched medRxiv and reviewed the reference lists of relevant papers and reports. In addition to the manufacturer report,¹ we identified two independent reports^{2,3} and 20 original articles⁴⁻²³ reporting the sensitivity of the test in 1,494 serum or plasma samples collected from RT-PCR-positive patients at least 14 days after symptom onset, including both inpatients and outpatients of different severity, as well as the specificity in 7,696 samples obtained before the COVID-19 epidemic or from RT-PCR-negative individuals, including samples with potential cross-reactivity to antibodies against other pathogens. The study-specific sensitivity and specificity estimates using the manufacturer recommended index value cutoff of 1.4 are provided in supplementary figure 1. To combine results across studies, a bivariate random-effects meta-analysis of logit-transformed continuity-corrected sensitivities and specificities was fitted through restricted maximum likelihood methods with unstructured between-study covariance matrix.²⁴ The pooled estimates (95% confidence intervals) of sensitivity and specificity across the 23 studies were 90.6% (88.1% to 92.6%) and 99.3% (99.0% to 99.5%), respectively, with moderate heterogeneity between studies in sensitivity ($I^2=46.0\%$, $P=0.01$) and no heterogeneity in specificity ($I^2=0.0\%$, $P=0.80$) (supplementary figure 1).

The age- and sex-specific prevalences of IgG antibodies against SARS-CoV-2 estimated with the CMIA test in ENE-COVID were corrected for the above pooled estimates of sensitivity and specificity. If I is an indicator variable for SARS-CoV-2 infection and S for IgG seropositivity, the seroprevalence of IgG antibodies π_S can be decomposed into

$$\begin{aligned}\pi_S &= P(S = 1) = P(I = 1)P(S = 1 | I = 1) + P(I = 0)P(S = 1 | I = 0) \\ &= \pi_I \theta_1 + (1 - \pi_I)(1 - \theta_0),\end{aligned}$$

where $\pi_I = P(I = 1)$ is the prevalence of SARS-CoV-2 infection, $\theta_1 = P(S = 1 | I = 1)$ is the test sensitivity, and $\theta_0 = P(S = 0 | I = 0)$ is the specificity. Solving this expression for π_I , a corrected estimate of the prevalence of SARS-CoV-2 infection was obtained as

$$p_I = \frac{p_S + s_0 - 1}{s_1 + s_0 - 1},$$

where p_S was the estimated seroprevalence in ENE-COVID and s_1 and s_0 were the estimated sensitivity and specificity of the CMIA test from the meta-analysis, respectively. To compute the variance of the corrected estimate, we accounted for random errors in estimating both the seroprevalence and the diagnostic test accuracy. By applying delta methods and taking into account that p_S and s_1 and s_0 were estimated from independent data sources, the variance of the corrected prevalence of SARS-CoV-2 infection was approximated as

$$\text{var}(p_I) \approx \frac{\text{var}(p_S) + p_I^2 \text{var}(s_1) + (1 - p_I)^2 \text{var}(s_0) - 2p_I(1 - p_I)\text{cov}(s_1, s_0)}{(s_1 + s_0 - 1)^2},$$

where $\text{var}(p_S)$ was the seroprevalence variance accounting for the ENE-COVID complex sampling design and $\text{var}(s_1)$, $\text{var}(s_0)$, and $\text{cov}(s_1, s_0)$ were the elements of the covariance matrix of the pooled estimates of sensitivity and specificity from the bivariate meta-analysis.

The age- and sex-specific corrected prevalences of SARS-CoV-2 infection and their 95% confidence intervals are provided in the third column of supplementary table 2.

Sex and age distribution of COVID-19 deaths in institutionalized population

Deaths with confirmed or suspected COVID-19 reported in the institutional setting (supplementary table 1) were disaggregated by sex and age group (60–69, 70–79, or ≥ 80 years) as follows. Let $S = i$ denote individuals in stratum $i = 1, \dots, 6$ formed by cross-classifying sex and age groups, $D = 1$ denote deaths with COVID-19, and $R = 1$ denote residents in

institutions. By the Bayes theorem, the conditional probability that a deceased resident with COVID-19 was in stratum i can be expressed as

$$\begin{aligned} P(S = i | D = 1, R = 1) &= \frac{P(S = i, D = 1 | R = 1)}{P(D = 1 | R = 1)} \\ &= \frac{P(S = i | R = 1)P(D = 1 | S = i, R = 1)}{\sum_{k=1}^6 P(S = k | R = 1)P(D = 1 | S = k, R = 1)}. \end{aligned}$$

Since COVID-19 mortality risks by sex and age group were unknown in the institutionalized population, we assumed that mortality risk ratios across strata were the same for the institutionalized and general population,

$$RR_{ki} = \frac{P(D = 1 | S = k, R = 1)}{P(D = 1 | S = i, R = 1)} = \frac{P(D = 1 | S = k)}{P(D = 1 | S = i)}.$$

Combining both expressions, the conditional probability of a deceased resident with COVID-19 being in stratum i was obtained as

$$P(S = i | D = 1, R = 1) = \frac{P(S = i | R = 1)}{\sum_{k=1}^6 P(S = k | R = 1)RR_{ki}},$$

which could be estimated from the available sex and age distribution of institutionalized residents²⁵ and the COVID-19 mortality risk ratios across sex and age strata in the entire population. The number of deaths with confirmed and suspected COVID-19 by sex and age group in the institutional setting was calculated by multiplying the reported aggregated deaths (supplementary table 1) by the above conditional probabilities, which were then subtracted from confirmed COVID-19 deaths and excess deaths in the entire population.^{26,27}

Confidence interval for infection fatality risk

The infection fatality risk was defined as the observed number of deaths due to COVID-19 d divided by the estimated number of SARS-CoV-2 infections \hat{n} ,

$$IFR = \frac{d}{\hat{n}}.$$

The confidence interval was calculated on the logit scale and accounted for both the binomial variance in the number of deaths and the estimated design-based variance in the number of infections. The variance of the logit-transformed infection fatality risk can be approximated by delta methods as

$$\begin{aligned}\text{var}\left(\log\frac{IFR}{1-IFR}\right) &= \text{var}\left(\log\frac{d}{\hat{n}-d}\right) \\ &\approx \frac{\hat{n}^2}{d^2(\hat{n}-d)^2}\text{var}(d) + \frac{1}{(\hat{n}-d)^2}\text{var}(\hat{n}),\end{aligned}$$

since d and \hat{n} were derived from independent data sources. Assuming a binomial variance for the observed number of deaths, we obtained

$$\begin{aligned}\text{var}\left(\log\frac{IFR}{1-IFR}\right) &\approx \frac{\hat{n}^2}{d^2(\hat{n}-d)^2}\frac{d(\hat{n}-d)}{\hat{n}} + \frac{\text{var}(\hat{n})}{(\hat{n}-d)^2} \\ &= \frac{1}{d} + \frac{1}{\hat{n}-d} + \frac{\text{var}(\hat{n})}{(\hat{n}-d)^2}.\end{aligned}$$

Note that the first two terms of this expression corresponded to the usual variance of the logit-transformed risk for fixed \hat{n} , whereas the last term was added to account for the variance of the number of infections $\text{var}(\hat{n}) = N^2\text{var}(\hat{p})$, where N was the population size and $\text{var}(\hat{p})$ was the variance of SARS-CoV-2 seroprevalence accounting for the ENE-COVID complex sampling design. From this variance estimate, we calculated Wald-type 95% confidence intervals for the logit-transformed infection fatality risks, whose lower and upper limits were back-transformed to the original scale for reporting.

SUPPLEMENTARY REFERENCES

- 1 Abbot Laboratories. SARS-CoV-2 IgG for use with ARCHITECT (ref: 6R86-20 & 6R86-30). June 2020. <https://www.fda.gov/media/137383/download> (accessed 14 September 2020).
- 2 U.S Food & Drug Administration. Serology test evaluation report for Architect i1000 SARS-CoV-2 IgG from Abbott. 29 June 2020. https://www.accessdata.fda.gov/cdrh_docs/presentations/maf/maf3305-a001.pdf (accessed 14 September 2020).
- 3 Public Health England. Evaluation of the Abbott SARS-CoV-2 IgG for the detection of anti-SARS-CoV-2 antibodies. 8 June 2020. <https://www.gov.uk/government/publications/covid-19-laboratory-evaluations-of-serological-assays> (accessed 14 September 2020).
- 4 Antoine-Reid T, Malone J, Maris AS, White-Abell J, Schmitz JE. Cross-comparison of a chemiluminescent platform and a commercial receptor binding domain-based ELISA for detecting SARS-CoV-2 IgG. *J Appl Lab Med* 2020;jfaa133. doi:10.1093/jalm/jfaa133.
- 5 Brochot E, Demey B, Handala L, François C, Duverlie G, Castelain S. Comparison of different serological assays for SARS-CoV-2 in real life. *J Clin Virol* 2020;130:104569. doi:10.1016/j.jcv.2020.104569.
- 6 Bryan A, Pepper G, Wener MH, et al. Performance characteristics of the Abbott Architect SARS-CoV-2 IgG assay and seroprevalence in Boise, Idaho. *J Clin Microbiol* 2020;58:e00941-20. doi:10.1128/JCM.00941-20.
- 7 Charlton CL, Kanji JN, Johal K, et al. Evaluation of six commercial mid to high volume antibody and six point of care lateral flow assays for detection of SARS-CoV-2 antibodies. *J Clin Microbiol* 2020;58:e01361-20. doi:10.1128/JCM.01361-20.

- 8 Chew KL, Tan SS, Saw S, et al. Clinical evaluation of serological IgG antibody response on the Abbott Architect for established SARS-CoV-2 infection. *Clin Microbiol Infect* 2020;26:1256.e9-11. doi:10.1016/j.cmi.2020.05.036.
- 9 Delliere S, Salmona M, Minier M, et al. Evaluation of the COVID-19 IgG/IgM rapid test from Orient Gene Biotech. *J Clin Microbiol* 2020;58:e01233-20. doi:10.1128/JCM.01233-20.
- 10 Ekelund O, Ekblom K, Somajo S, Pattison-Granberg J, Olsson K, Petersson A. High-throughput immunoassays for SARS-CoV-2, considerable differences in performance when comparing three methods. medRxiv. 2020. doi:10.1101/2020.05.22.20106294.
- 11 Hamilton F, Muir P, Attwood M, et al. Kinetics and performance of the Abbott architect SARS-CoV-2 IgG antibody assay. *J Infect* Published Online First: 30 July 2020. doi:10.1016/j.jinf.2020.07.031.
- 12 Jaaskelainen A, Kuivanen S, Kekalainen E, et al. Performance of six SARS-CoV-2 immunoassays in comparison with microneutralisation. *J Clin Virol* 2020;129:104512. doi:10.1016/j.jcv.2020.104512.
- 13 Kohmer N, Westhaus S, Rühl C, Ciesek S, Rabenau HF. Brief clinical evaluation of six high-throughput SARS-CoV-2 IgG antibody assays. *J Clin Virol* 2020;129:104480. doi:10.1016/j.jcv.2020.104480.
- 14 Meschi S, Colavita F, Bordi L, et al. Performance evaluation of Abbott ARCHITECT SARS-CoV-2 IgG immunoassay in comparison with indirect immunofluorescence and virus microneutralization test. *J Clin Virol* 2020;129:104539. doi:10.1016/j.jcv.2020.104539.
- 15 Nicol T, Lefeuvre C, Serri O, et al. Assessment of SARS-CoV-2 serological tests for the diagnosis of COVID-19 through the evaluation of three immunoassays: Two automated

- immunoassays (Euroimmun and Abbott) and one rapid lateral flow immunoassay (NG Biotech). *J Clin Virol* 2020;129:104511. doi:10.1016/j.jcv.2020.104511.
- 16 Paiva KJ, Grisson RD, Chan PA, et al. Validation and performance comparison of three SARS-CoV-2 antibody assays. *J Med Virol* Published Online First: 25 July 2020. doi:10.1002/jmv.26341.
 - 17 Patel E, Bloch EM, Clarke W, et al. Comparative performance of five commercially available serologic assays to detect antibodies to SARS-CoV-2 and identify individuals with high neutralizing titers. medRxiv. 2020. doi:10.1101/2020.08.31.20184788.
 - 18 Péré H, Védie B, Vernet R, et al. Unexpected diagnosis of COVID-19-associated disorders by SARS-CoV-2-specific serology. *J Clin Virol* 2020;132:104568. doi:10.1016/j.jcv.2020.104568.
 - 19 Perkmann T, Perkmann-Nagele N, Breyer MK, et al. Side by side comparison of three fully automated SARS-CoV-2 antibody assays with a focus on specificity. *Clin Chem* Published Online First: 10 August 2020. doi:10.1093/clinchem/hvaa198.
 - 20 Pollán M, Pérez-Gómez B, Pastor-Barriuso R, et al. Prevalence of SARS-CoV-2 in Spain (ENE-COVID): a nationwide, population-based seroepidemiological study. *Lancet* 2020;396:535-44. doi:10.1016/S0140-6736(20)31483-5.
 - 21 Tang MS, Hock KG, Logsdon NM, et al. Clinical performance of two SARS-CoV-2 serologic assays. *Clin Chem* 2020;66:1055-62. doi:10.1093/clinchem/hvaa120.
 - 22 Theel ES, Haring J, Hilgart H, Granger D. Performance characteristics of four high-throughput immunoassays for detection of IgG antibodies against SARS-CoV-2. *J Clin Microbiol* 2020;58:e01243-20. doi:10.1128/JCM.01243-20.
 - 23 Van Elslande J, Decru B, Jonckheere S, et al. Antibody response against SARS-CoV-2 spike protein and nucleoprotein evaluated by four automated immunoassays and three

ELISAs. *Clin Microbiol Infect* Published Online First: 31 July 2020.

doi:10.1016/j.cmi.2020.07.038.

- 24 Reitsma JB, Glas AS, Rutjes AW, Scholten RJ, Bossuyt PM, Zwinderman AH. Bivariate analysis of sensitivity and specificity produces informative summary measures in diagnostic reviews. *J Clin Epidemiol* 2005;58:982-90. doi:10.1016/j.jclinepi.2005.02.022.
- 25 Abellán García A, Aceituno Nieto P, Fernández Morales I, Ramiro Fariñas D, Pujol Rodríguez R. Una estimación de la población que vive en residencias de mayores. 24 April 2020. <http://envejecimientoenred.es/una-estimacion-de-la-poblacion-que-vive-en-residencias-de-mayores/> (accessed 11 September 2020).
- 26 Instituto de Salud Carlos III. COVID-19 in Spain. 2020. <https://cnecovid.isciii.es/covid19/> (accessed 11 September 2020).
- 27 Instituto de Salud Carlos III. Vigilancia de la Mortalidad Diaria (MoMo). 2020. https://momo.isciii.es/public/momo/dashboard/momo_dashboard.html (accessed 11 September 2020).
- 28 Instituto de Estadística y Cartografía de Andalucía, Consejería de Salud y Familias, Junta de Andalucía. Informe COVID-19 en Andalucía: Situación de COVID-19 en población que vive en residencias según sexo por provincia y distrito sanitario. 2020. https://www.juntadeandalucia.es/institutodeestadisticaycartografia/badea/operaciones/consulta/anual/38528?CodOper=b3_2314&codConsulta=38528 (accessed 31 July 2020).
- 29 Departamento de Sanidad, Gobierno de Aragón. Boletín epidemiológico semanal de Aragón: Semana 29/2020 (13/07/2020 al 19/07/2020). 2020. <https://www.aragon.es/documents/20127/1650151/BOLETIN+ARAGON+292020.pdf/e4ad23ed-ca07-fb0c-0f01-7a2a0b19f5c6?t=1595508119280> (accessed 31 July 2020).
- 30 Observatorio de Salud en Asturias, Consejería de Salud, Gobierno de Asturias. Mortalidad con coronavirus en Asturias, 2020: Informe número 10 (21.07.2020). 2020.

- https://obsaludasturias.com/obsa/wp-content/uploads/MORTALIDAD20CON20CORONAVIRUS_21072020.pdf (accessed 31 July 2020).
- 31 Direcció General de Salut Pública i Participació, Conselleria de Salut i Consum, Govern de les Illes Balears. COVID-19, Illes Balears, Informe 13-2020: Informe de vigilancia epidemiológica, resumen de datos actualizados a 20 de julio 2020. 2020.
https://www.caib.es/sites/epidemiologia/es/coronavirus_2019-ncov/archivopub.do?ctrl=MCRST337ZI325118&id=325118 (accessed 31 July 2020).
- 32 Conselleria de Salut i Consum, Govern de les Illes Balears. Nota Informativa COVID-19: La Conselleria de Salud y Consumo informa que en Balears hay 122 casos activos de SARS-CoV-2. 15 July 2020. <http://www.caib.es/pidip2front/jsp/es/ficha-convocatoria/9502480> (accessed 31 July 2020).
- 33 Gobierno de Canarias. El Gobierno de Canarias articula un protocolo para que las personas en residencias puedan recibir visitas. 2 June 2020.
<https://www3.gobiernodecanarias.org/noticias/el-gobierno-de-canarias-articula-un-protocolo-para-que-las-personas-en-residencias-puedan-recibir-visitas/> (accessed 4 September 2020).
- 34 Ordaz A, Oliveres V, Sánchez R, elDiario.es. Madrid fue la autonomía donde más ancianos murieron en las residencias: el 17% frente al 9% de la media nacional. 22 June 2020. https://www.eldiario.es/sociedad/ancianos-residencias-fallecieron-crisis-coronavirus_1_6058018.html (accessed 31 July 2020).
- 35 RTVE. Radiografía del coronavirus en residencias de ancianos: más de 19.600 muertos con COVID-19 o síntomas compatibles. 2020.
<https://www.rtve.es/noticias/20200724/radiografia-del-coronavirus-residencias-ancianos-espana/2011609.shtml> (accessed 24 July 2020).

- 36 Dirección General de Políticas Sociales, Consejería de Empleo y Políticas Sociales, Gobierno de Cantabria. Mortalidad en personas dependientes marzo-junio 2020: Boletín extraordinario. 1 July 2020.
<https://www.serviciosocialescantabria.org/uploads/documentos/Mortalidad%20en%20Personas%20Dependientes%20Marzo-Junio%202020.pdf> (accessed 31 July 2020).
- 37 Dirección General de Salud Pública, Consejería de Sanidad, Junta de Castilla-La Mancha. Nota de prensa: Quinto día sin fallecimientos registrados por COVID-19 en Castilla-La Mancha. 15 July 2020. <https://www.castillalamancha.es/actualidad/notasdeprensa/quinto-d%C3%ADa-sin-fallecimientos-registrados-por-covid-19-en-castilla-la-mancha> (accessed 31 July 2020).
- 38 Junta de Castilla y León. Situación epidemiológica del coronavirus (COVID-19) en Castilla y León. 2020. <https:// analisis.datosabiertos.jcyl.es/pages/coronavirus/> (accessed 16 July 2020).
- 39 Junta de Castilla y León. Datos de coronavirus en residencias de mayores, centros de personas con discapacidad y viviendas tuteladas en Castilla y León. 15 July 2020. <https://comunicacion.jcyl.es/web/jcyl/binarios/16/269/Datos%20coronavirus%20residencias%20y%20centros%2015%20julio.pdf> (accessed 31 July 2020).
- 40 Departament de Salut, Generalitat de Catalunya. Nota de premsa: Comunicat del Departament de Salut. 15 July 2020. <https://govern.cat/salaprensa/notes-premsa/386621/comunicat-del-departament-salut> (accessed 31 July 2020).
- 41 Consellería de Sanidad Universal y Salud Pública, Generalitat Valenciana. Press Releases, Daily updates up to 15/07/2020. 2020. https://www.gva.es/es/inicio/area_de_prensa/ap_notas_prensa?tipoContenido=26&zona=21&botonBuscar=buscar&busquedaorganismo=3.07 (accessed 31 July 2020).

- 42 Servicio Extremeño de Promoción de la Autonomía y Atención a la Dependencia (SEPAD), Vicepresidencia segunda y Consejería de Sanidad y Servicios Sociales, Gobierno de Extremadura. Comparecencia del Director General del Servicio Extremeño de Promoción de la Autonomía y Atención a la Dependencia en la Comisión de Sanidad y Servicios Sociales del Parlamento de Extremadura. 29 June 2020. <https://www.youtube.com/watch?v=rnRqx0rSdF4> (accessed 31 July 2020).
- 43 Dirección General de Salud Pública, Consellería de Sanidad, Xunta de Galicia. Press release: Galicia registra un total de 238 casos activos por coronavirus. 15 July 2020. <https://www.xunta.gal/notas-de-prensa/-/nova/50304/galicia-registra-total-238-casos-activos-por-coronavirus> (accessed 31 July 2020).
- 44 Gobierno de La Rioja. Press release: Situación epidemiológica del COVID-19 en La Rioja. 2020. <https://actualidad.larioja.org/coronavirus/datos> (accessed 31 July 2020).
- 45 Comunidad de Madrid. Información sobre actuaciones en centros de servicios sociales de carácter residencial en relación con la crisis sanitaria por el COVID-19. 23 June 2020. https://www.comunidad.madrid/sites/default/files/aud/servicios-sociales/informacion_ccrr_covid-10_230620.pdf (accessed 31 July 2020).
- 46 Consejería de Salud, Gobierno de Murcia. Press Release: La Región es la única comunidad en contar con un sistema de información a tiempo real sobre el Covid-19. 7 May 2020. <http://www.murciasalud.es/noticias.php?op=ver&id=461504> (accessed 31 July 2020).
- 47 Departamento de Derechos Sociales, Gobierno Abierto de Navarra. Datos centros sociales, covid-19. 30 June 2020. <https://gobiernoabierto.navarra.es/es/open-data/datos/datos-centros-sociales-covid-19> (accessed 31 July 2020).
- 48 Diputación Foral de Álava. Press release: Una persona permanece con COVID-19 en las residencias de personas mayores. 12 June 2020. <http://arabapress.eus/es/noticia-5068->

[Una persona permanece con COVID 19 en las residencias de personas mayores.html](#) (accessed 31 July 2020).

49 Diputación Foral de Guipúzcoa. Press release: Las residencias de Gipuzkoa quedan libres de COVID-19. 3 July 2020. <https://www.gipuzkoa.eus/es/-/gipuzkoako-egoitzak-covid-19-gabe-geratu-dira> (accessed 31 July 2020).

50 Diputación Foral de Bizkaia. Press release: Situación en la red de centros residenciales forales de personas mayores en situación de dependencia de Bizkaia. 3 July 2020. <https://web.bizkaia.eus/es/web/area-de-prensa/noticias/-/news/detailView/21050> (accessed 31 July 2020).

Supplementary Table 1. Deaths with confirmed and suspected COVID-19 in nursing homes in Spain reported by Regional Authorities.*

Autonomous Community	Update date	Confirmed COVID-19 deaths	Suspected COVID-19 deaths†	Total deaths
Andalucía ²⁸	15/07/2020	558	0	558
Aragón ²⁹	19/07/2020	760	0	760
Asturias ³⁰	21/07/2020	236	7	243
Baleares ^{31,32}	20/07/2020	73	16	89
Canarias ^{33-35‡}	02/06/2020	19	7	26
Cantabria ³⁶	30/06/2020	141	11	152
Castilla-La Mancha ^{34,37‡}	15/07/2020	1,335	1,187	2,522
Castilla y León ^{38,39}	15/07/2020	1,496	1,105	2,601
Cataluña ^{34,40‡§}	15/07/2020	1,759	2,354	4,113
Comunidad Valenciana ^{34,35,41‡}	15/07/2020	516	43	559
Extremadura ⁴²	29/06/2020	342	90	432
Galicia ⁴³	15/07/2020	274	22	296
La Rioja ⁴⁴	20/07/2020	211	0	211
Madrid ⁴⁵	23/06/2020	1,253	4,734	5,987
Murcia ⁴⁶	01/07/2020	68	0	68
Navarra ⁴⁷	30/06/2020	268	164	432
País Vasco ⁴⁸⁻⁵⁰	03/07/2020	600	32	632
Ceuta/Melilla ^{34‡}	22/06/2020	0	0	0
Overall		9,909	9,772	19,681

* Data may include a small number of deaths from other long-term care facilities or collective establishments in several regions. Some Autonomous Communities limited their reports to confirmed COVID-19 deaths.

† Deaths with symptoms compatible with COVID-19 but not confirmed with laboratory test.

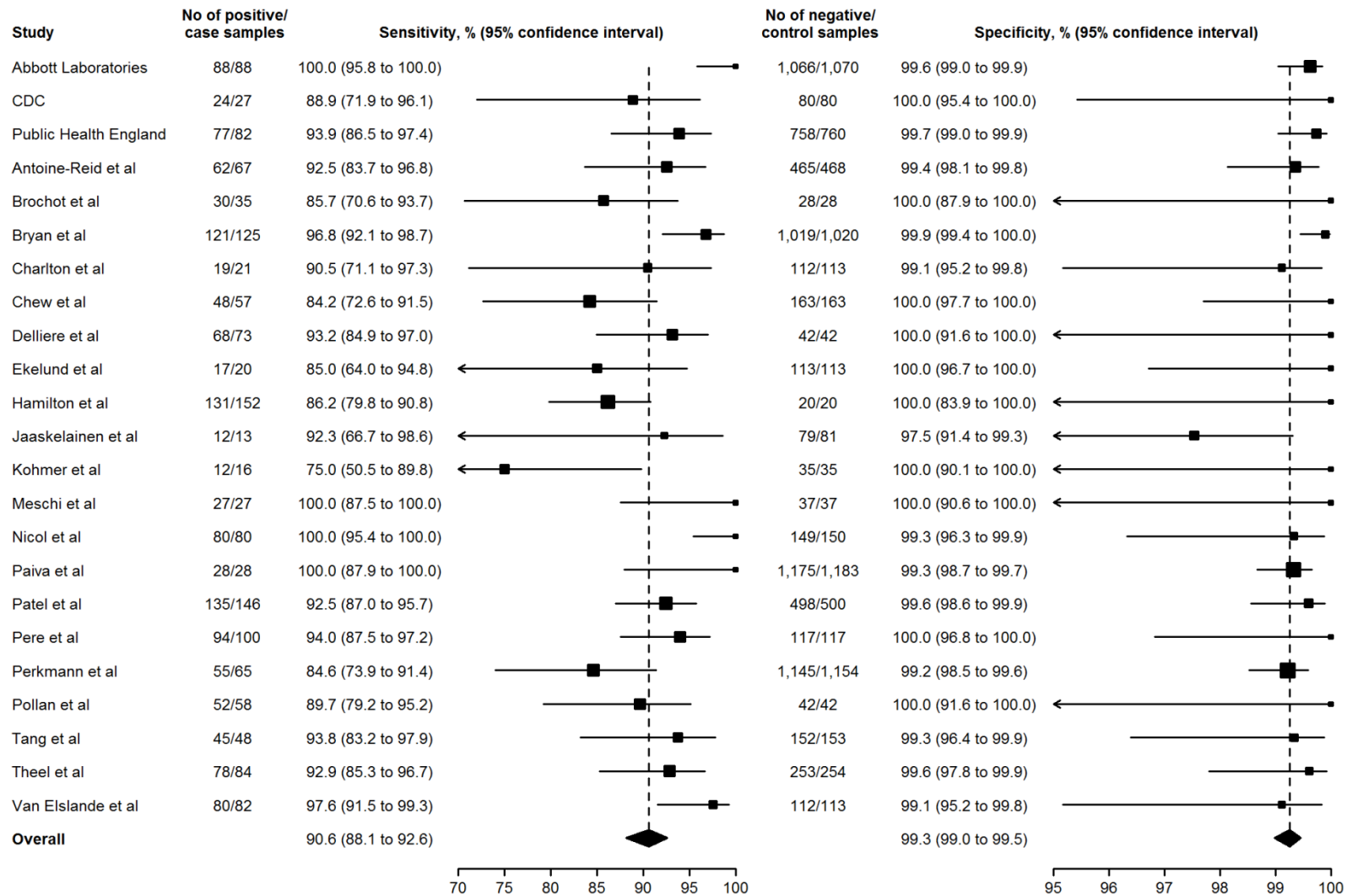
‡ Reports from Regional Health Authorities were complemented with data provided by Autonomous Communities to press media to update distribution of confirmed and suspected COVID-19 deaths.

§ Data from Cataluña corresponded only to residents who died in nursing homes.

Supplementary Table 2. Infection fatality risk for SARS-CoV-2 in non-institutionalized population based on prevalence of SARS-CoV-2 infection corrected for immunoassay sensitivity and specificity, ENE-COVID study, April 27–June 22, 2020, Spain.

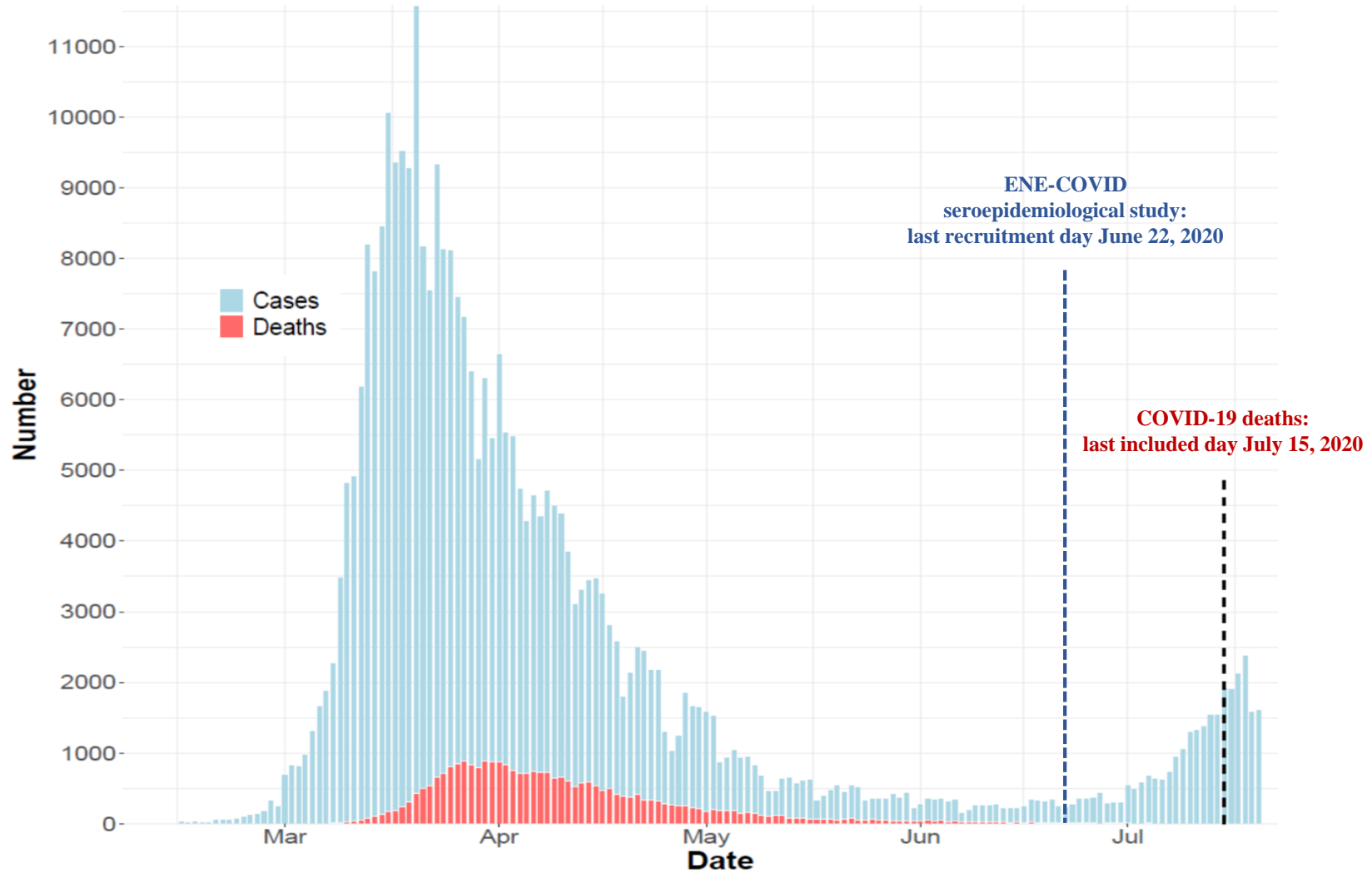
Sex, age (years)	Individuals in population, thousands	Prevalence of SARS-CoV-2 infection*, % (95% CI)	Individuals with SARS-CoV-2 infection, thousands (95% CI)	Confirmed COVID-19 deaths	Excess all-cause deaths	Infection fatality risk, % (95% CI)	
						Based on confirmed COVID-19 deaths	Based on excess all-cause deaths
Overall	46,887.1	4.7 (4.2 to 5.1)	2,180.4 (1,977.7 to 2,402.7)	19,228	24,778	0.88 (0.80 to 0.97)	1.14 (1.03 to 1.25)
Men	23,006.9	4.5 (4.0 to 5.1)	1,041.1 (929.6 to 1,165.2)	12,317	15,480	1.18 (1.06 to 1.33)	1.49 (1.33 to 1.67)
0–9	2,205.5	2.8 (1.4 to 5.5)	61.6 (31.1 to 120.2)	3	32	0.00 (0.00 to 0.02)	0.05 (0.02 to 0.11)
10–19	2,557.9	3.2 (2.3 to 4.6)	83.0 (58.4 to 117.3)	3	0	0.00 (0.00 to 0.01)	0.00 (0.00 to 0.01)
20–29	2,479.1	5.6 (4.4 to 7.1)	138.6 (108.8 to 175.9)	18	0	0.01 (0.01 to 0.02)	0.00 (0.00 to 0.01)
30–39	2,978.7	4.4 (3.4 to 5.6)	131.0 (102.1 to 167.4)	48	3	0.04 (0.03 to 0.05)	0.00 (0.00 to 0.01)
40–49	3,916.7	5.1 (4.3 to 6.1)	200.3 (167.2 to 239.6)	192	168	0.10 (0.08 to 0.12)	0.08 (0.07 to 0.11)
50–59	3,493.8	5.0 (4.2 to 6.1)	176.0 (146.1 to 211.6)	705	601	0.40 (0.33 to 0.49)	0.34 (0.28 to 0.42)
60–69	2,598.2	4.6 (3.7 to 5.8)	120.1 (95.5 to 150.7)	1,904	2,065	1.58 (1.26 to 2.00)	1.72 (1.36 to 2.17)
70–79	1,783.7	4.4 (3.3 to 5.9)	78.5 (58.3 to 105.2)	4,145	5,114	5.28 (3.92 to 7.09)	6.52 (4.83 to 8.74)
≥80	993.3	4.3 (2.8 to 6.6)	42.6 (27.6 to 65.1)	5,299	7,497	12.5 (8.00 to 18.9)	17.6 (11.3 to 26.5)
Women	23,880.1	4.8 (4.3 to 5.3)	1,139.1 (1,024.7 to 1,265.6)	6,911	9,298	0.61 (0.54 to 0.68)	0.82 (0.73 to 0.91)
0–9	2,078.3	3.9 (2.2 to 6.8)	80.8 (45.7 to 141.0)	2	11	0.00 (0.00 to 0.01)	0.01 (0.01 to 0.03)
10–19	2,396.7	4.1 (3.0 to 5.5)	97.2 (71.4 to 131.8)	3	22	0.00 (0.00 to 0.01)	0.02 (0.01 to 0.04)
20–29	2,404.1	5.5 (4.3 to 7.1)	133.1 (103.9 to 169.9)	17	10	0.01 (0.01 to 0.02)	0.01 (0.00 to 0.01)
30–39	3,012.4	5.0 (4.0 to 6.1)	149.6 (121.6 to 183.6)	29	71	0.02 (0.01 to 0.03)	0.05 (0.03 to 0.06)
40–49	3,877.8	5.1 (4.3 to 6.1)	198.2 (165.2 to 237.2)	103	91	0.05 (0.04 to 0.07)	0.05 (0.03 to 0.06)
50–59	3,563.5	4.9 (4.1 to 5.9)	175.8 (146.6 to 210.5)	318	369	0.18 (0.15 to 0.22)	0.21 (0.17 to 0.26)
60–69	2,803.4	4.7 (3.8 to 5.9)	133.1 (107.0 to 165.3)	749	875	0.56 (0.45 to 0.71)	0.66 (0.52 to 0.82)
70–79	2,138.1	4.3 (3.3 to 5.7)	92.4 (70.3 to 121.1)	1,986	2,646	2.15 (1.63 to 2.83)	2.86 (2.17 to 3.77)
≥80	1,605.8	4.7 (3.3 to 6.8)	76.0 (52.5 to 109.3)	3,704	5,203	4.87 (3.36 to 7.02)	6.85 (4.72 to 9.84)

* Prevalence of SARS-CoV-2 infection corrected for sensitivity and specificity of chemiluminiscent microparticle immunoassay for IgG (see supplementary methods for details).



Supplementary Figure 1. Sensitivity and specificity of chemiluminiscent microparticle immunoassay (SARS-CoV-2 IgG for use with ARCHITECT, Abbott Laboratories) against RT-PCR in studies of diagnostic test accuracy and overall pooled estimates, 2020.

Samples from RT-PCR-confirmed cases and controls exceeding the manufacturer recommended index value cutoff of 1.4 were considered positive in all studies. The area of each square is proportional to the study weight in the meta-analysis. Horizontal lines represent 95% confidence intervals based on Wilson score methods. Diamonds represent the pooled sensitivity and specificity across all studies estimated from a bivariate random-effects meta-analysis of logit-transformed continuity-corrected sensitivities and specificities.



Supplementary Figure 2. COVID-19 cases by date of symptom onset and COVID-19 deaths by date of defunction in Spain, 2020.

Data were obtained from the Spanish National Epidemiological Surveillance Network (RENAVE).