

Nature and dimensions of the cytokine storm and its attenuation by convalescent plasma in severe COVID-19

Bandopadhyay P et al.

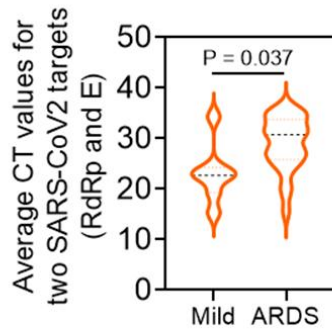
Extended data figures with legends

A

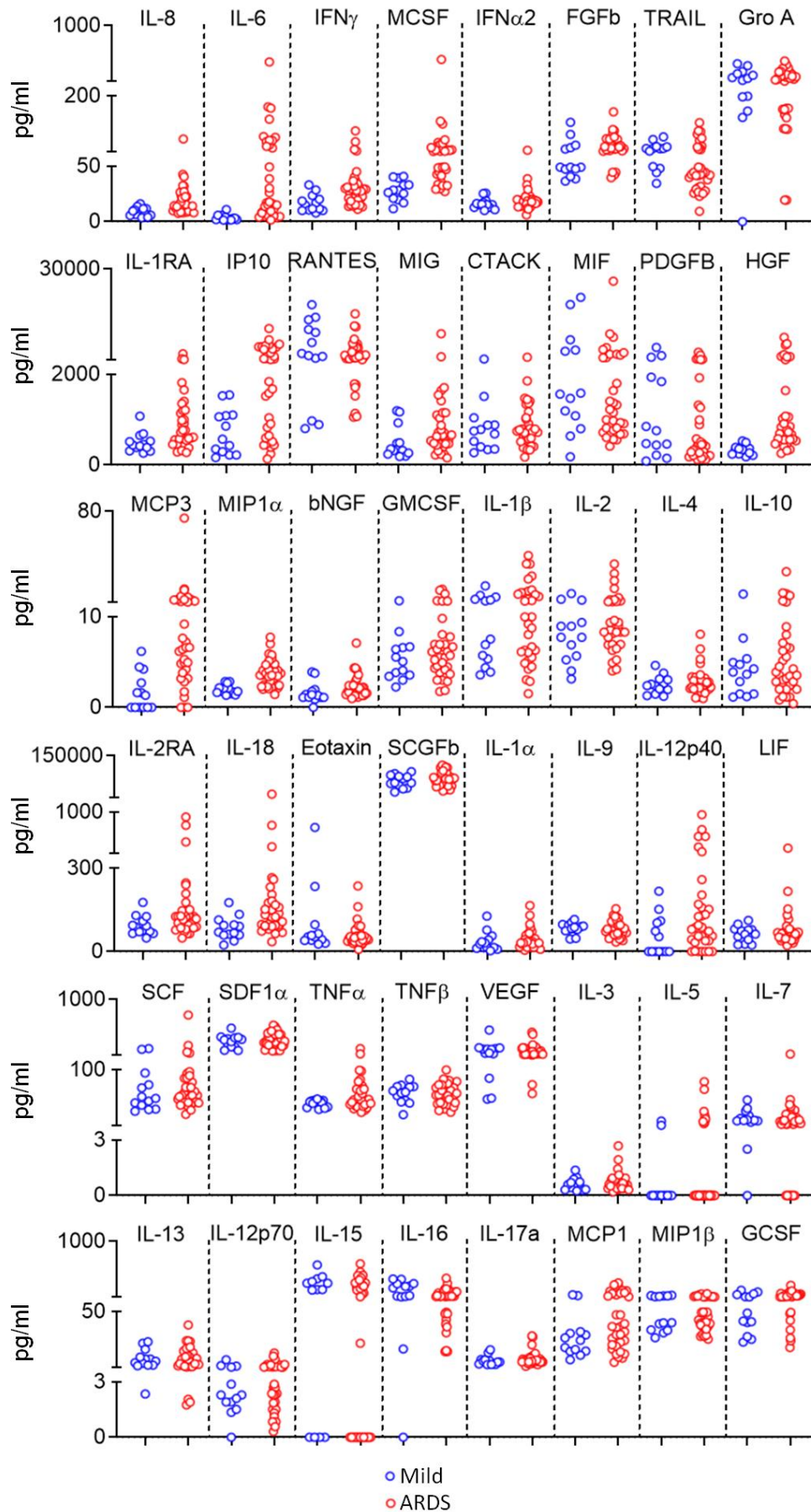
Patient characteristics.

Group	N	Age (Years) (Mean \pm SD)	Male	Female	Admission to enrolment (Days, Mean \pm SD)
Mild Covid-19	13	41.1 \pm 11.2	12	1	2.5 \pm 2
ARDS	33	60.03 \pm 11.5	26	7	4 \pm 2.8

B



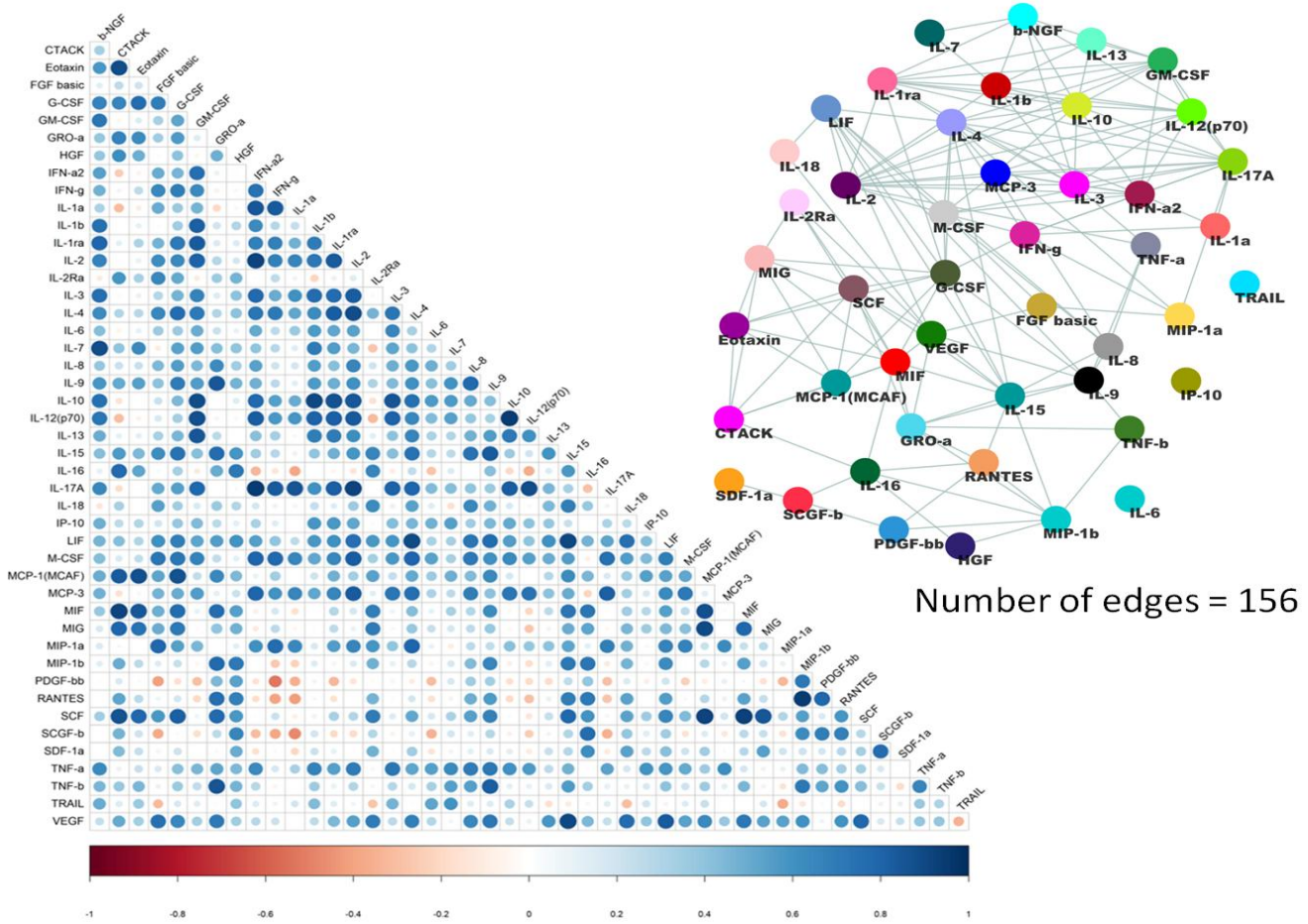
Extended Data Figure 1



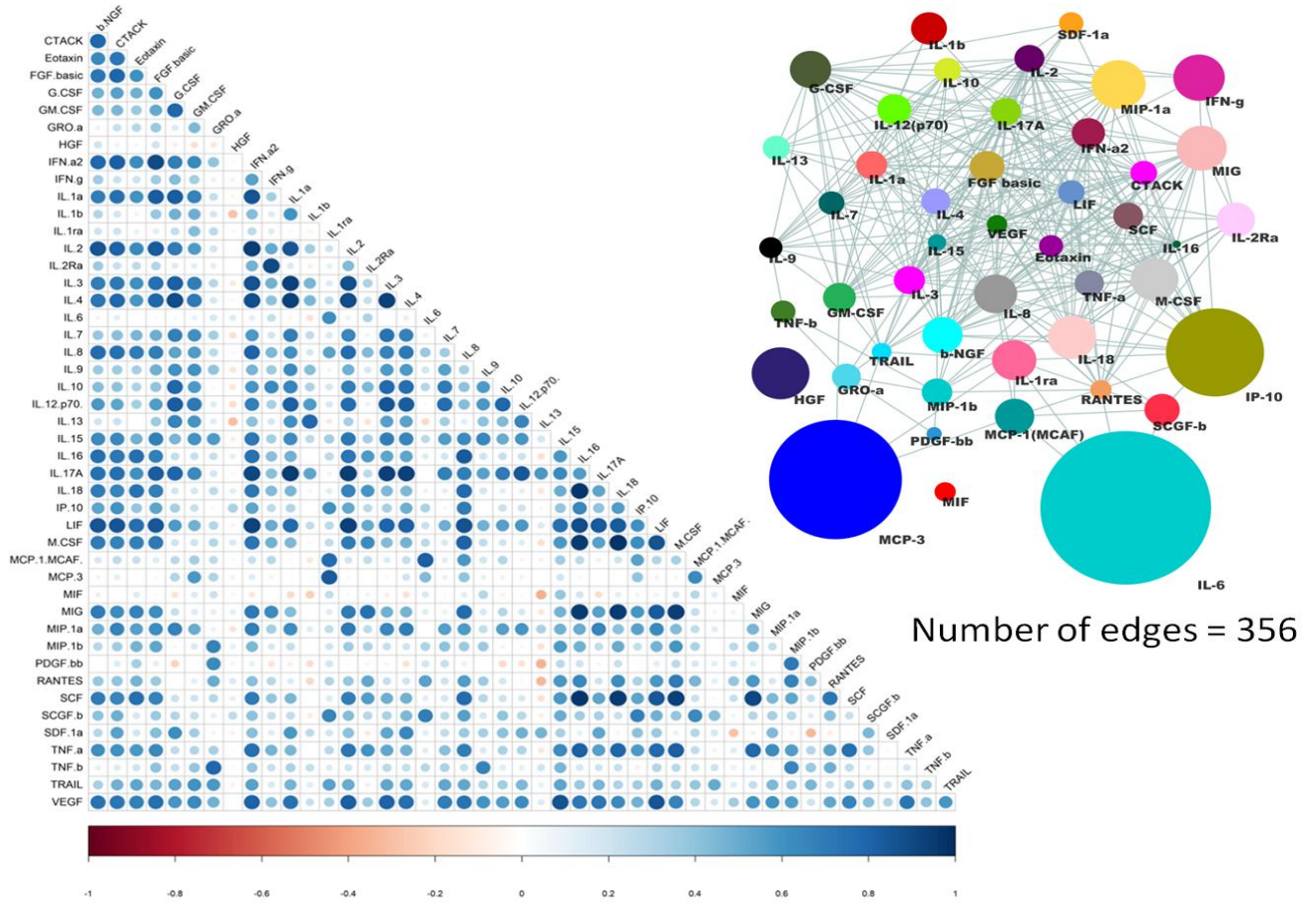
Name	Z	P value
b-NGF	-2.55116	0.010737
CTACK	-0.34154	0.732698
Eotaxin	0.80506	0.420787
FGF basic	-2.13508	0.032755
G-CSF	-1.56132	0.118448
GM-CSF	-1.08618	0.277401
GRO-a	0.07319	0.941652
HGF	-4.46441	0.000008
IFN-a2	-1.84267	0.065378
IFN-g	-3.13562	0.001715
IL-1a	-1.22186	0.221762
IL-1b	-0.80511	0.420758
IL-1ra	-2.76925	0.005619
IL-2	-0.90334	0.366348
IL-2Ra	-2.19615	0.028082
IL-3	-0.68363	0.494211
IL-4	-0.54900	0.583003
IL-5	-0.79440	0.426963
IL-6	-4.41603	0.000010
IL-7	0.68503	0.493328
IL-8	-3.40330	0.000666
IL-9	0.34156	0.732682
IL-10	-0.56129	0.574599
IL-12(p70)	-0.87928	0.379253
IL-12(p40)	-1.99905	0.045604
IL-13	0.20741	0.835691
IL-15	0.73871	0.460083
IL-16	1.41504	0.157059
IL-17A	-1.39176	0.163997
IL-18	-2.90309	0.003695
IP-10	-3.04946	0.002293
LIF	-0.04880	0.961076
M-CSF	-4.41576	0.000010
MCP-1(MCAF)	-1.81759	0.069128
MCP-3	-3.77197	0.000162
MIF	0.95143	0.341386
MIG	-2.09816	0.035892
MIP-1a	-4.05031	0.000051
MIP-1b	0.14637	0.883626
PDGF-bb	1.00025	0.317188
RANTES	0.90264	0.366717
SCF	-0.73198	0.464179
SCGF-b	-1.07341	0.283088
SDF-1a	-0.41473	0.678342
TNF-a	-1.50043	0.133505
TNF-b	0.36595	0.714405
TRAIL	1.97629	0.048122
VEGF	0.30507	0.760314

Extended Data Figure 2

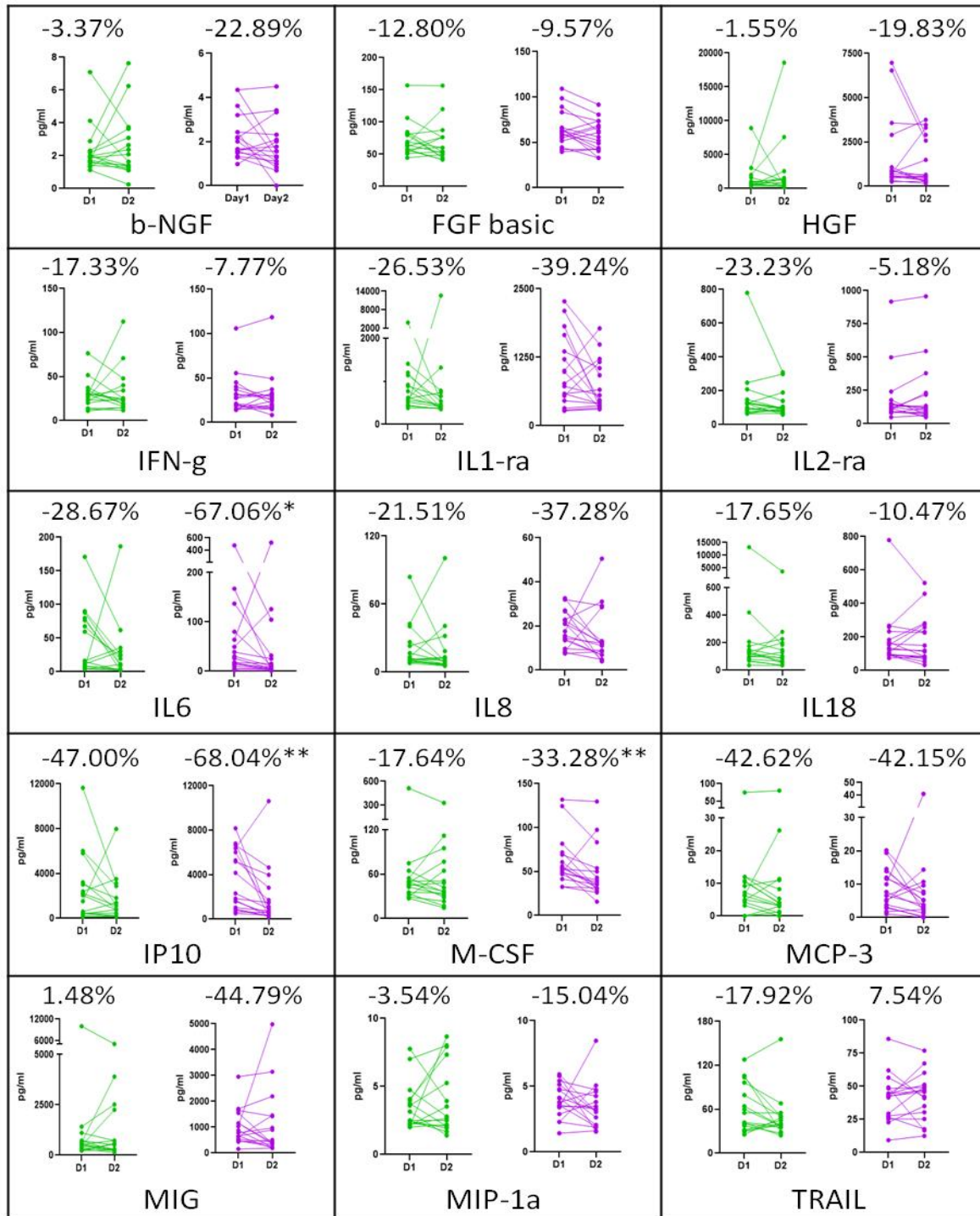
A



B



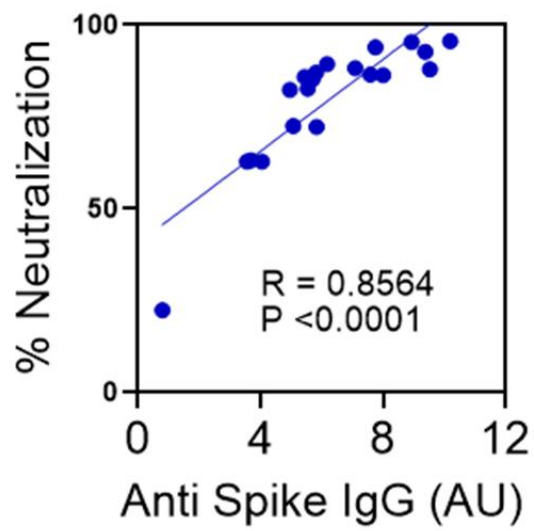
Extended Data Figure 3



* P < 0.05

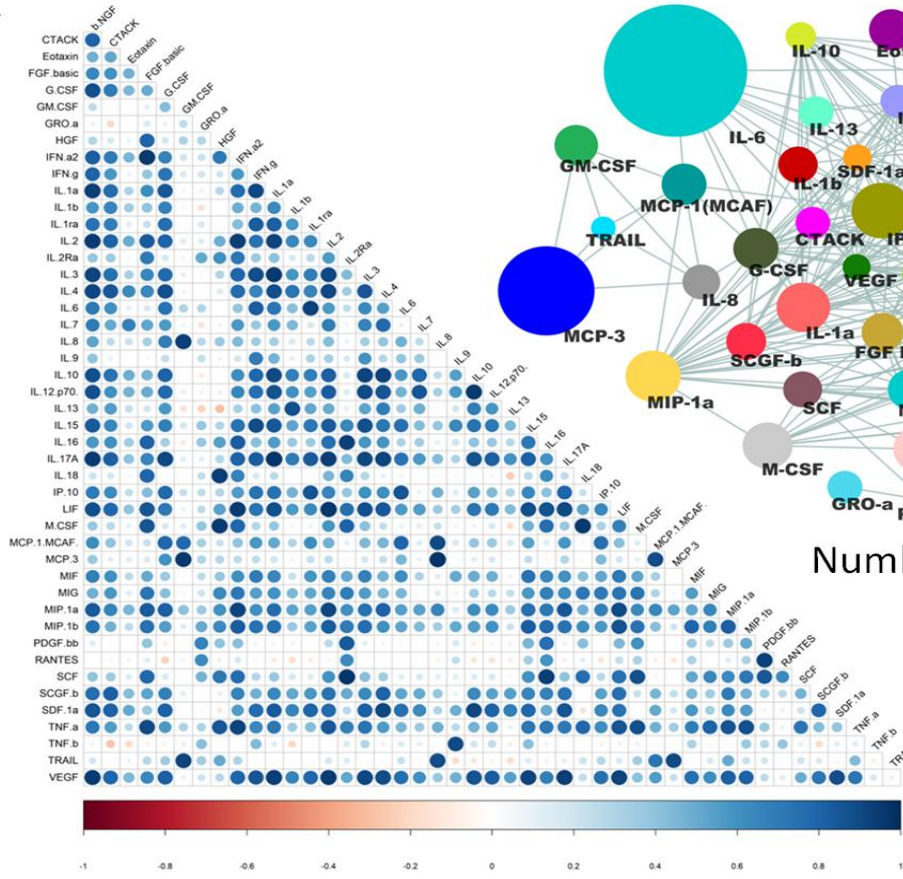
** P < 0.01

Extended Data Figure 4



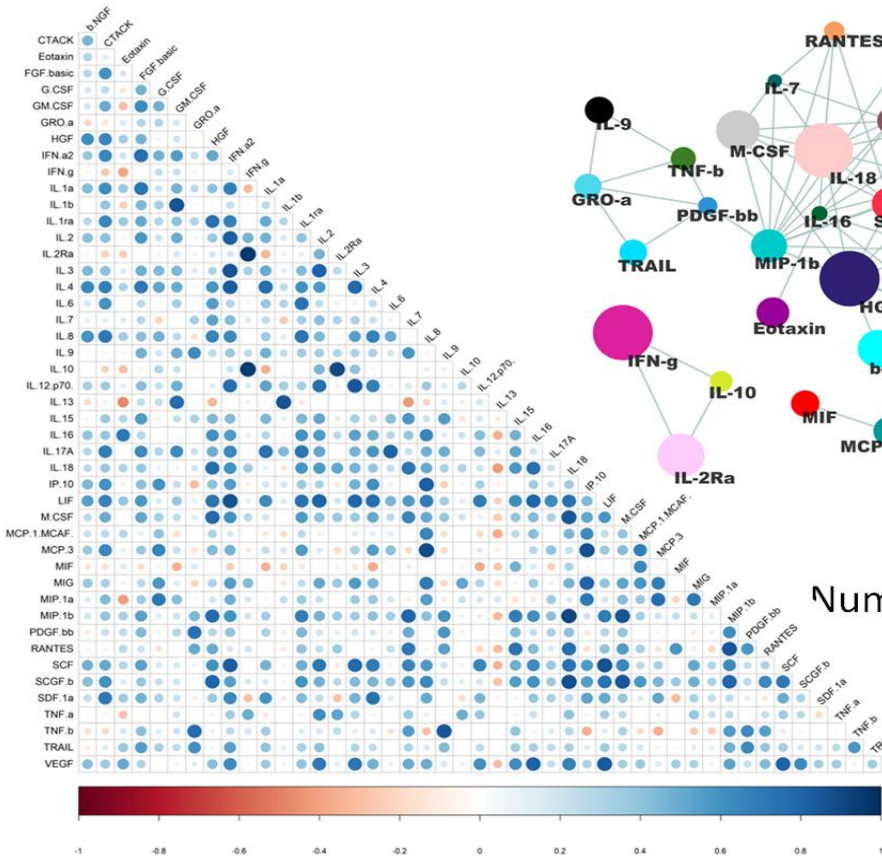
Extended Data Figure 5

A



Number of edges = 334

B



Number of edges = 135

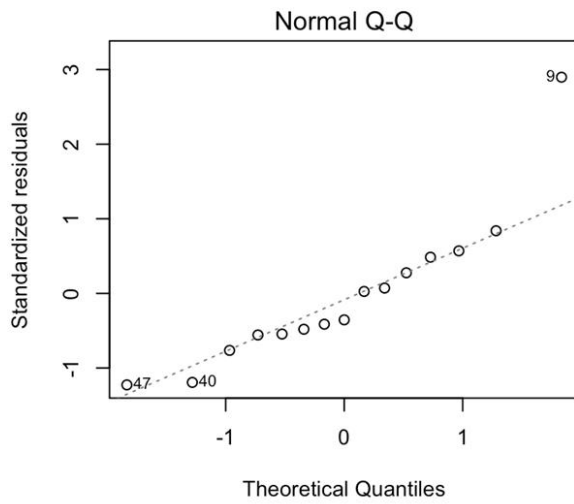
Extended Data Figure 6

A

Linear Regression Formula	R ²	Adjusted R ²	F statistic	p-value
SPR _{5D} AUC ~ nAb	0.3303	0.2787	6.411	0.02503
SPR _{5D} AUC ~ IP10 + IL6 + nAb	0.5543	0.4328	4.56	0.02612

Coefficients for SPR _{5D} AUC ~ IP10 + IL6 + nAb				
	Estimate	Std. Error	t value	Pr(> t)
(Intercept)	7.0825	2.6114	2.712	0.0202 *
IP10	-0.1035	0.2867	-0.361	0.7251
IL6	-0.4297	0.2877	-1.494	0.1633
nAb	0.6334	0.2107	3.007	0.0119 *

B



Extended Data Figure 7

Legends for Extended Data Figures:

Extended Data Figure 1: **A.** Patient characteristics of subjects recruited in the study. **B.** Violin plot representing viral load of SARS-CoV2 across mild and ARDS sample groups.

Extended Data Figure 2: Panel of 48 cytokines measured across ARDS and mild samples . Blue dots represent MILD and red dots represent ARDS samples. The Z value and P value for Mann-Whitney U Test are given in the adjacent table.

Extended Data Figure 3: A. Left panel describes the correlation matrix for systemic levels of all cytokines at T1 whereas right panel describes the correlation network with r threshold set at 0.5 and P threshold at 0.01 for mild state. **B.** Left panel describes the correlation matrix for systemic levels of all cytokines at T1 whereas right panel describes the correlation network with r threshold set at 0.5 and P threshold at 0.01 for ARDS state.

Extended Data Figure 4: The plot describes the change in the systemic level of 15 significantly differential cytokines between mild and ARDS conditions in SCO and CPT patients from T1 to T2. The percentage difference of median value at T2 time point in compare to T1 was also calculated for each of the cytokines.

Extended Data Figure 5: The plot depicts the pearson correlation between anti-spike IgG content of plasma and its capacity to neutralize spike-ACE2 interaction, as measured in an in vitro assay, in our cohort of convalescent donors.

Extended Data Figure 6: A. Left panel describes the correlation matrix for systemic levels of all cytokines at T2 whereas right panel describes the correlation network with r threshold set at 0.5 and P threshold at 0.01 for SOC state. **B.** Left panel describes the correlation matrix for systemic levels of all cytokines at T2 whereas right panel describes the correlation network with r threshold set at 0.5 and P threshold at 0.01 for CPT state.

Extended Data Figure 7: A. Summary of the linear regression analysis using R. **B.** The Q-Q plot between theoretical quantiles of $\ln(\text{SPR5D AUC} \sim \text{IL6} + \text{IP10} + \text{nAb})$ and standardised residuals explain that residuals follow a normal distribution and thus the model has low error.