

More Figures for the NAS Data Analysis

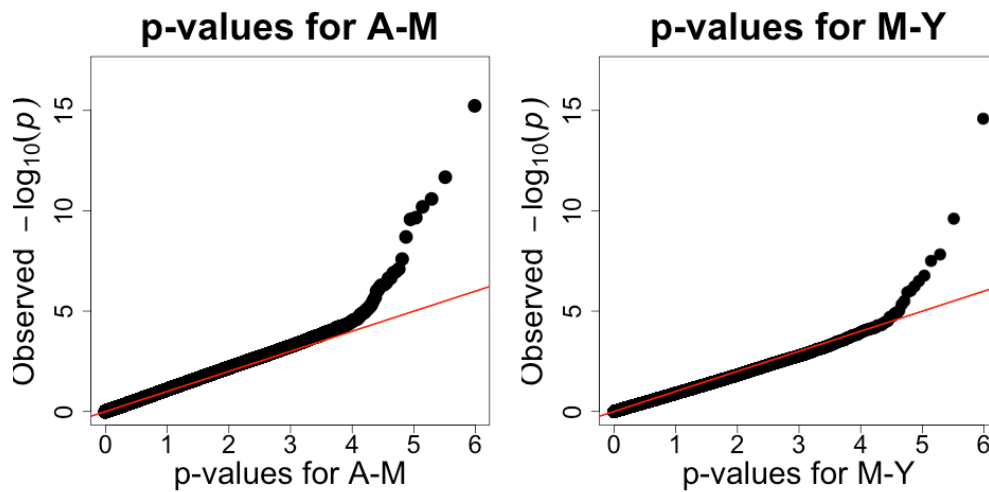


Figure S1. The QQ plots for the p-values for A-M associations and the p-values for M-Y associations in the mediator regression and the outcome regression respectively in our NAS data. Both genomic inflation factors are close to 1 and the QQ plots look very good.

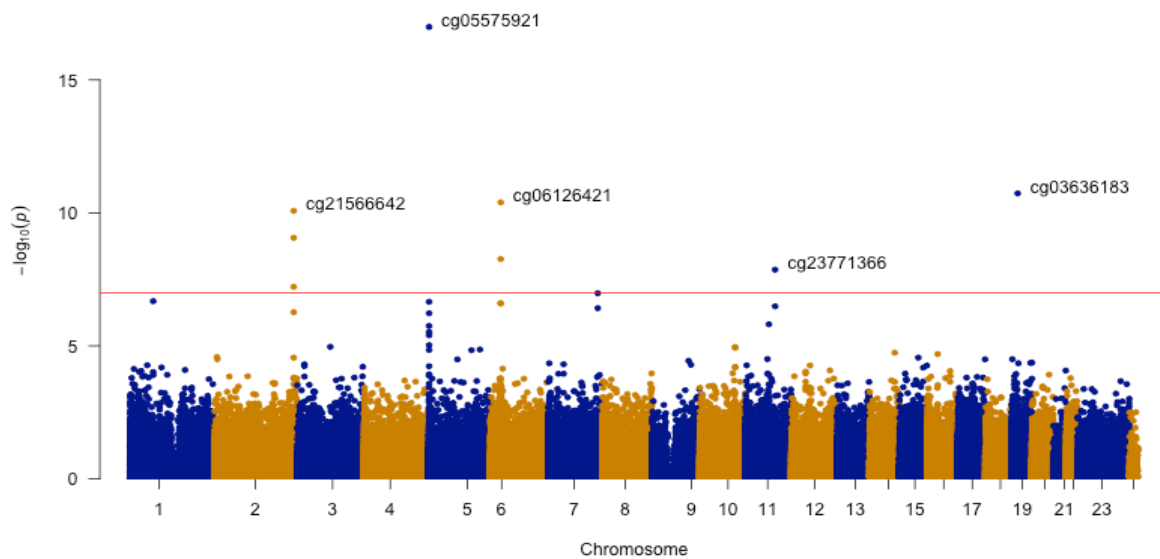


Figure S2. The Manhattan plot for the DACT method with annotations for each chromosome. The horizontal represents the chromosome number and the vertical axis represents the p-values on the $-\log_{10}$ scale. The red solid line represents the genome-wide significance threshold after Bonferroni correction ($1.03E-7$ for 484,613 CpG sites).

Sensitivity Analysis Results for Mediation Effects

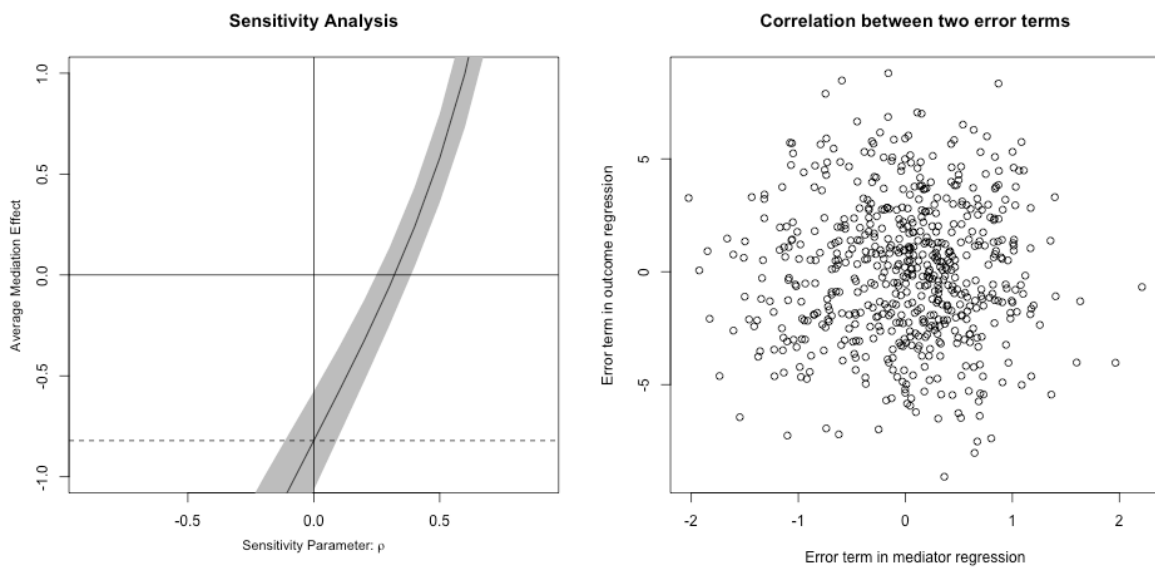


Figure S3. Mediation sensitivity analysis for average causal mediation effect for cg05575921. ρ at which NIE = 0: 0.3. The Pearson's product-moment correlation ρ between the two error terms in the mediator and outcome regressions is $-1.731303e-19$, indicating no evidence of unmeasured confounding.

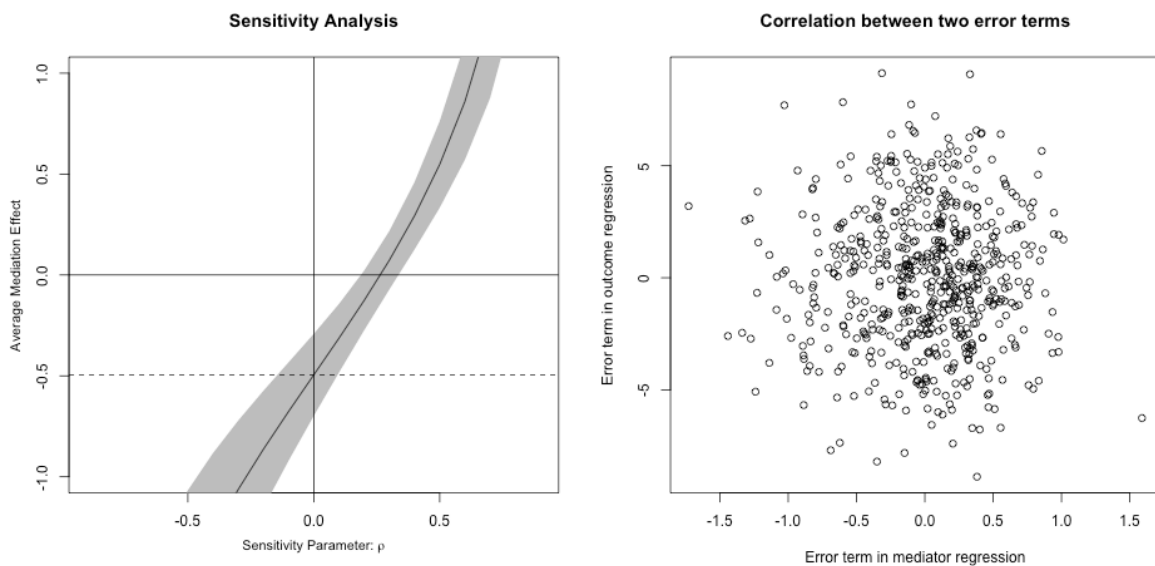


Figure S4. Mediation sensitivity analysis for average causal mediation effect for cg03636183. ρ at which NIE = 0: 0.3. The Pearson's product-moment correlation ρ between the two error terms in the mediator and outcome regressions is $-1.374412e-17$, indicating no evidence of unmeasured confounding.

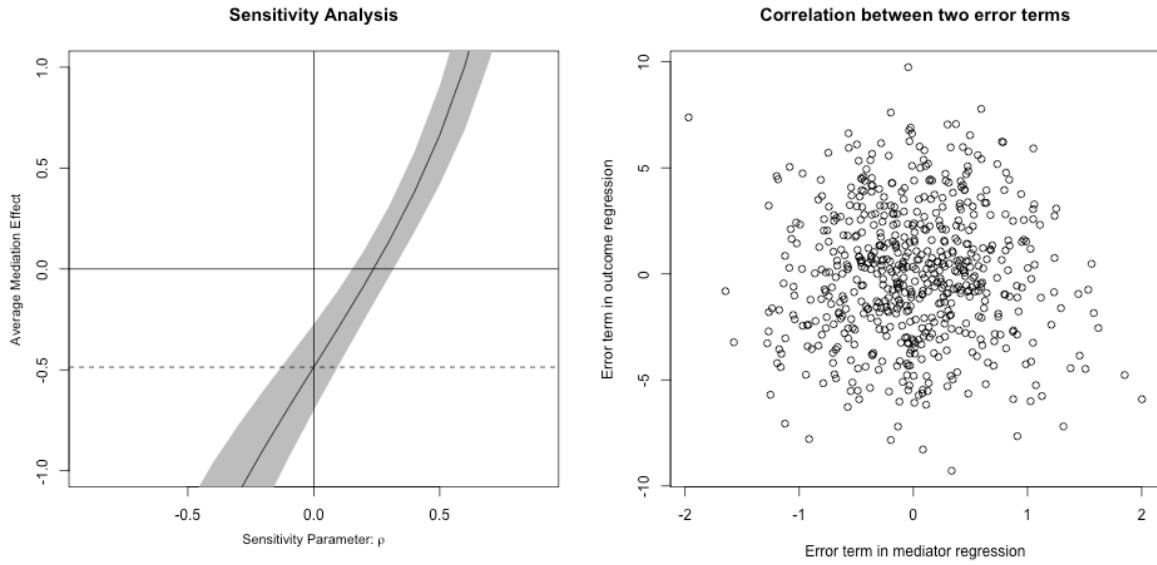


Figure S5. Mediation sensitivity analysis for average causal mediation effect for cg06126421. ρ at which NIE = 0: 0.2. The Pearson's product-moment correlation ρ between the two error terms in the mediator and outcome regressions is $-9.39588e-18$, indicating no evidence of unmeasured confounding.

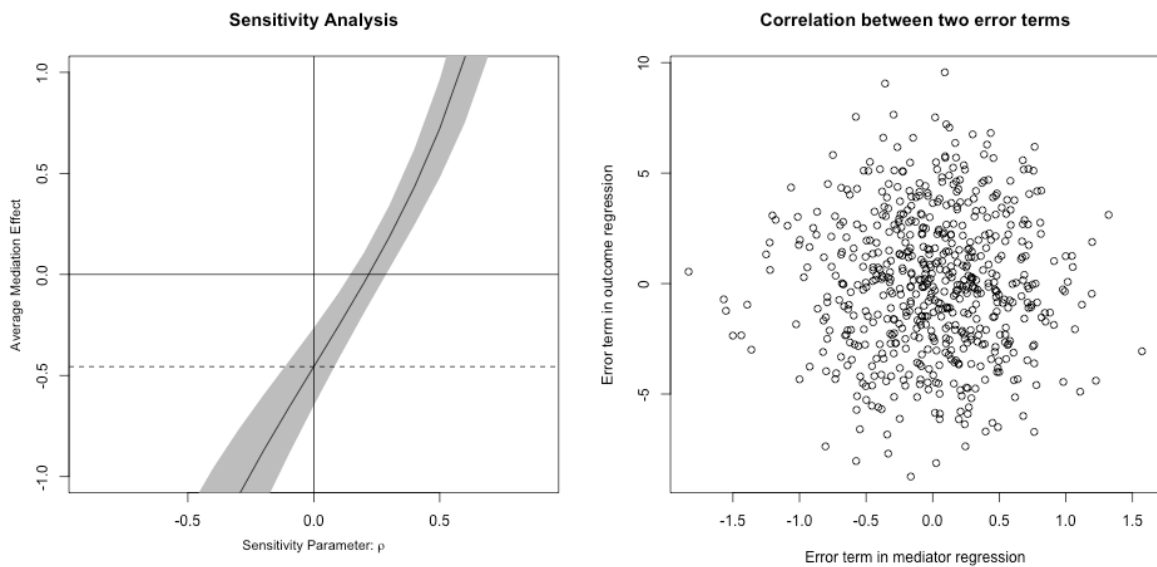


Figure S6. Mediation sensitivity analysis for average causal mediation effect for cg21566642. ρ at which NIE = 0: 0.2. The Pearson's product-moment correlation ρ between the two error terms in the mediator and outcome regressions is $2.020523e-18$, indicating no evidence of unmeasured confounding.

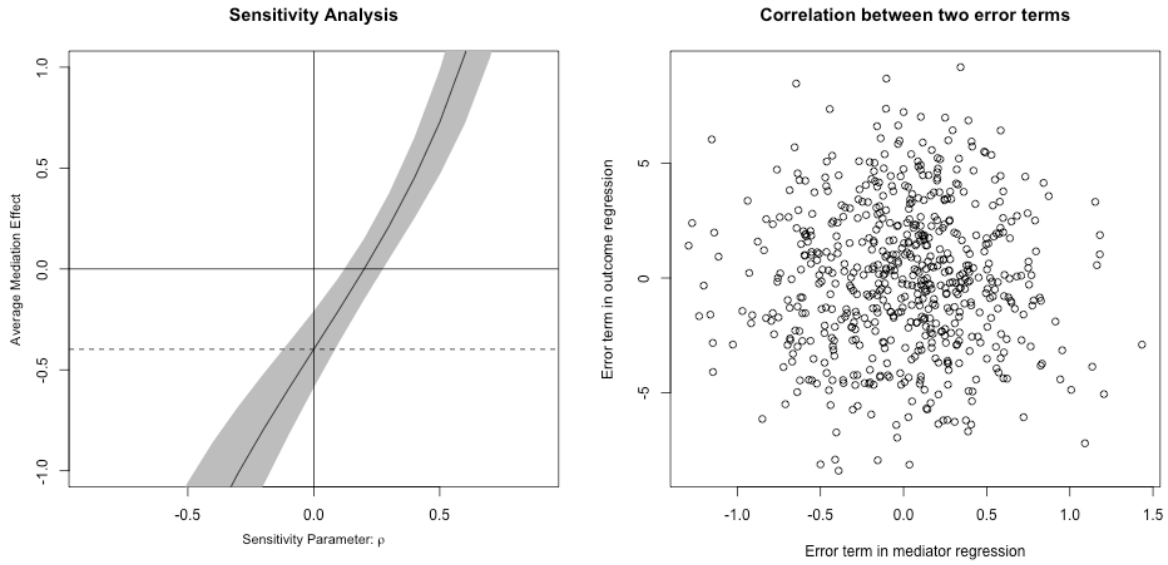


Figure S7. Mediation sensitivity analysis for average causal mediation effect for cg05951221. ρ at which NIE = 0: 0.2. The Pearson's product-moment correlation ρ between the two error terms in the mediator and outcome regressions is $-2.548202e-17$, indicating no evidence of unmeasured confounding.

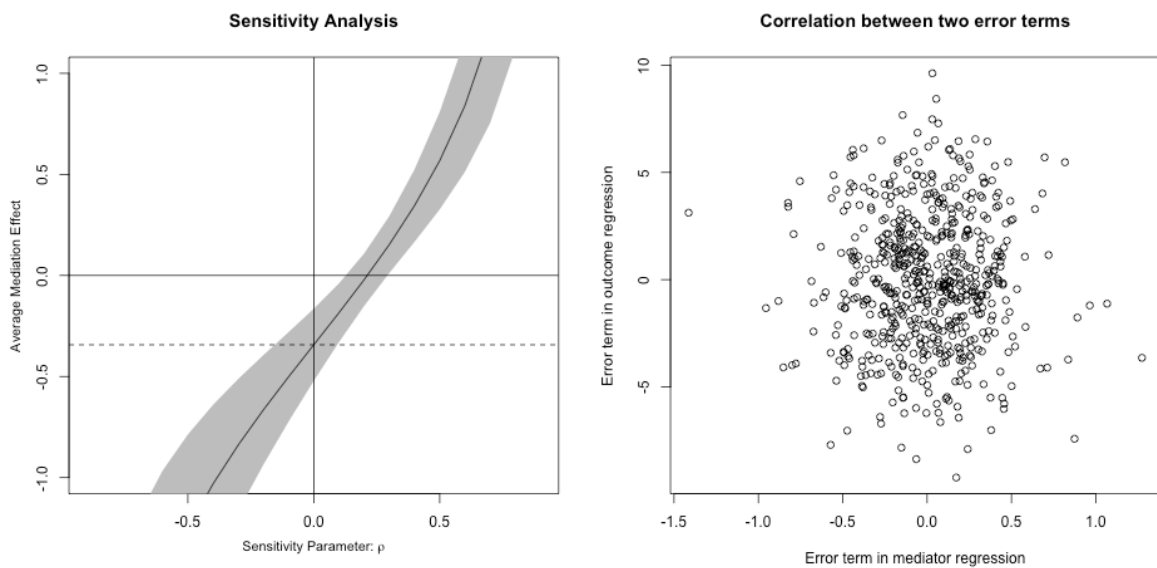


Figure S8. Mediation sensitivity analysis for average causal mediation effect for cg14753356. ρ at which NIE = 0: 0.2. The Pearson's product-moment correlation ρ between the two error terms in the mediator and outcome regressions is $5.356858e-17$, indicating no evidence of unmeasured confounding.

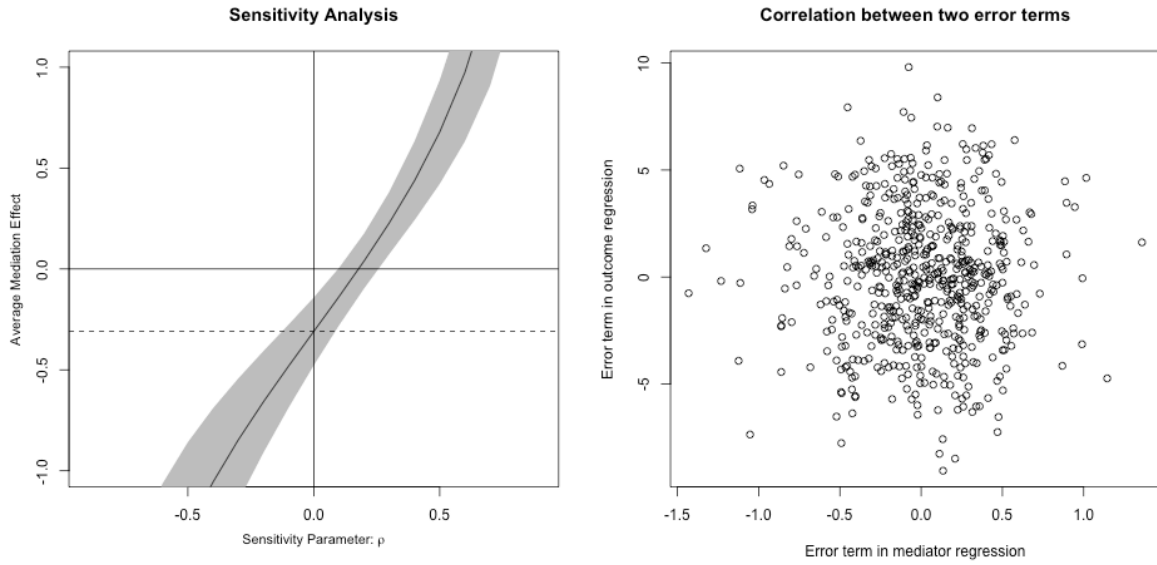


Figure S9. Mediation sensitivity analysis for average causal mediation effect for cg23771366. ρ at which NIE = 0: 0.2. The Pearson's product-moment correlation ρ between the two error terms in the mediator and outcome regressions is $4.993342e-17$, indicating no evidence of unmeasured confounding.

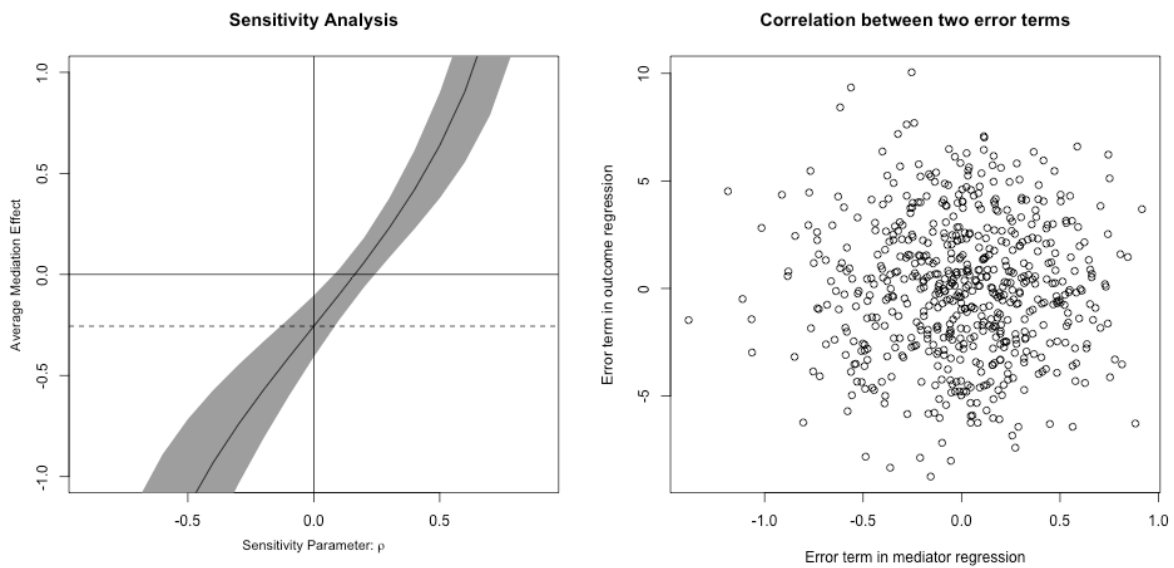


Figure S10. Mediation sensitivity analysis for average causal mediation effect for cg01940273. ρ at which NIE = 0: 0.2. The Pearson's product-moment correlation ρ between the two error terms in the mediator and outcome regressions is $4.406354e-17$, indicating no evidence of unmeasured confounding.

A Full List of Detected CpG Sites (Table S1)

Table S1. Top hits from causal mediation analysis of the Normative Aging Genome-wide Epigenetic Study based on Fdr smaller than 0.05. The exposure is smoking status, and the outcome is lung function measure FEF 25-75%. CHR stands for chromosome number. NIE stands for Natural Indirect Effect (mediation effect). The p_{NIE} column is computed using the DACT method after correction.

CpG Name	CHR	γ	SE_{γ}	p_{γ}	β	SE_{β}	p_{β}	NIE	p_{Sobel}	p_{NIE}
cg05575921	5	-0.53	0.06	5.93E-16	1.50	0.18	2.60E-15	-0.79	6.19E-09	1.02E-17
cg03636183	19	-0.27	0.04	2.02E-09	1.72	0.27	2.49E-10	-0.46	9.70E-06	1.86E-11
cg06126421	6	-0.37	0.06	6.37E-11	1.23	0.21	1.50E-08	-0.46	1.38E-05	4.01E-11
cg21566642	2	-0.32	0.05	2.59E-11	1.42	0.25	3.14E-08	-0.46	1.52E-05	8.35E-11
cg05951221	2	-0.27	0.04	2.20E-10	1.46	0.28	3.17E-07	-0.40	5.43E-05	8.71E-10
cg14753356	6	-0.15	0.03	2.26E-07	2.02	0.41	1.16E-06	-0.31	3.40E-04	5.42E-09
cg23771366	11	-0.20	0.04	2.55E-08	1.56	0.34	4.72E-06	-0.32	3.51E-04	1.37E-08
cg01940273	2	-0.18	0.04	4.64E-07	1.46	0.34	1.90E-05	-0.26	9.97E-04	5.99E-08
cg21322436	7	-0.17	0.03	1.08E-07	1.57	0.38	3.53E-05	-0.27	9.86E-04	1.05E-07
cg25189904	1	-0.37	0.07	1.26E-07	0.71	0.18	6.90E-05	-0.26	1.34E-03	2.08E-07
cg23916896	5	-0.38	0.07	3.86E-07	0.66	0.16	7.22E-05	-0.25	1.61E-03	2.21E-07
cg24859433	6	-0.19	0.04	2.45E-05	1.34	0.27	9.62E-07	-0.25	1.26E-03	2.51E-07
cg15342087	6	-0.18	0.04	2.47E-05	1.46	0.29	5.89E-07	-0.26	1.15E-03	2.53E-07
cg11660018	11	-0.18	0.03	2.68E-10	1.72	0.44	1.07E-04	-0.30	8.56E-04	3.26E-07
cg25949550	7	-0.19	0.04	7.14E-06	1.16	0.30	1.02E-04	-0.22	3.07E-03	3.83E-07
cg06644428	2	-0.56	0.08	2.12E-12	0.58	0.15	1.75E-04	-0.33	8.31E-04	5.45E-07
cg11902777	5	-0.28	0.07	3.21E-05	0.71	0.18	8.65E-05	-0.20	4.04E-03	5.94E-07
cg14624207	11	-0.08	0.02	6.07E-05	2.14	0.59	2.80E-04	-0.18	6.73E-03	1.54E-06
cg03991871	5	-0.36	0.09	6.02E-05	0.49	0.14	3.50E-04	-0.18	7.23E-03	1.78E-06