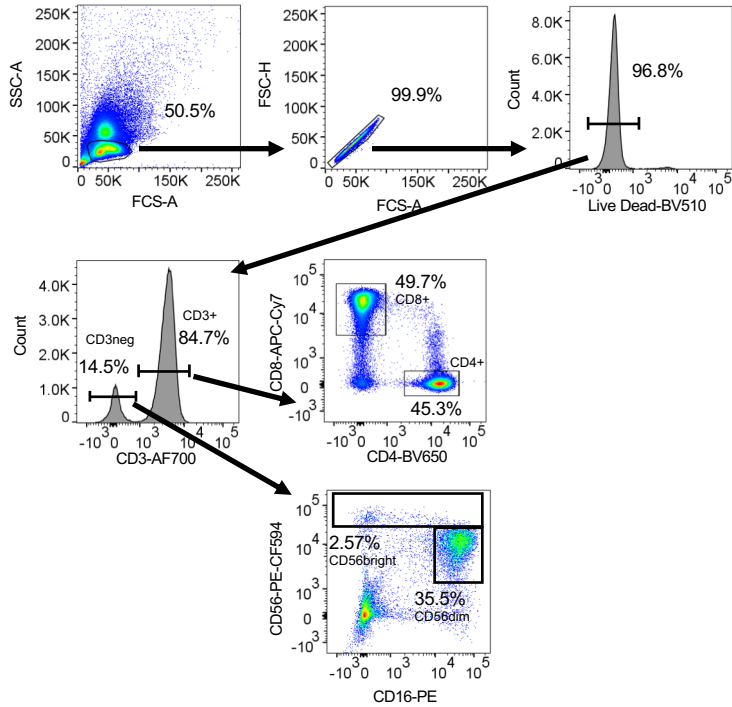


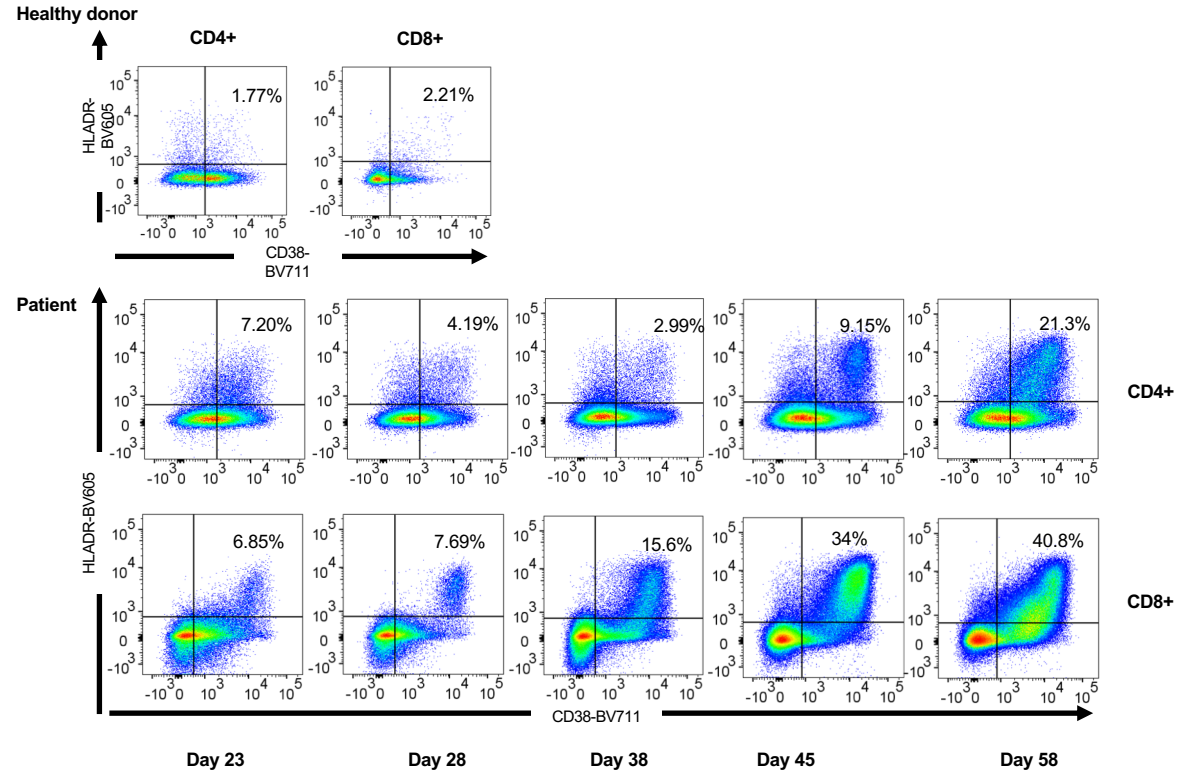
## Supplementary Fig S1.

The gating strategies are shown for T and NK cell populations (A), for T-cell activation (B) and proliferation (C) markers and for TCR- $\gamma\delta$  T-cells (D) and TCR- $\gamma\delta$  activation and proliferation markers (E).

**A**



**B**



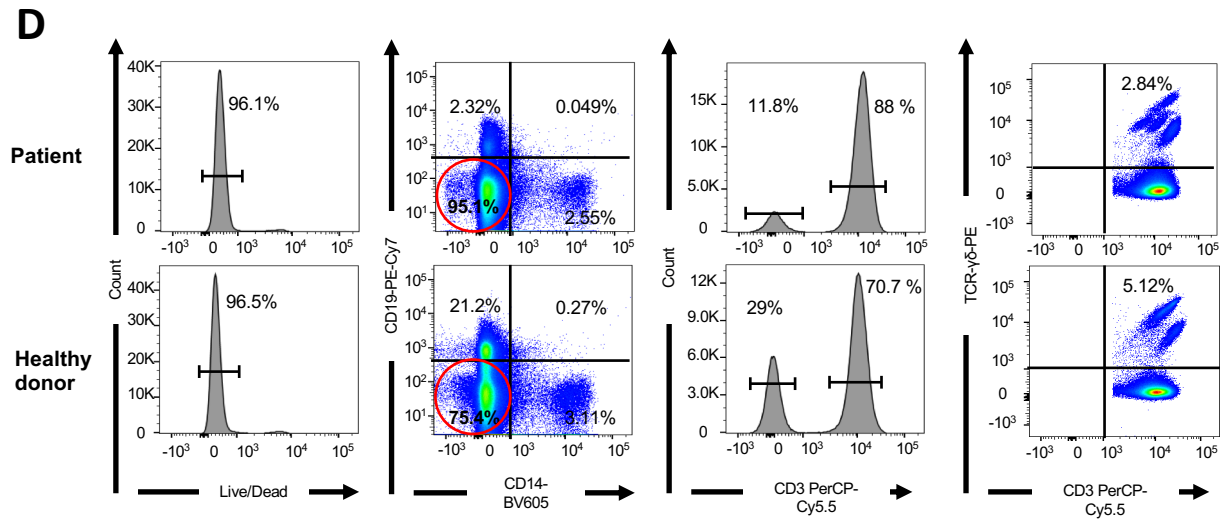
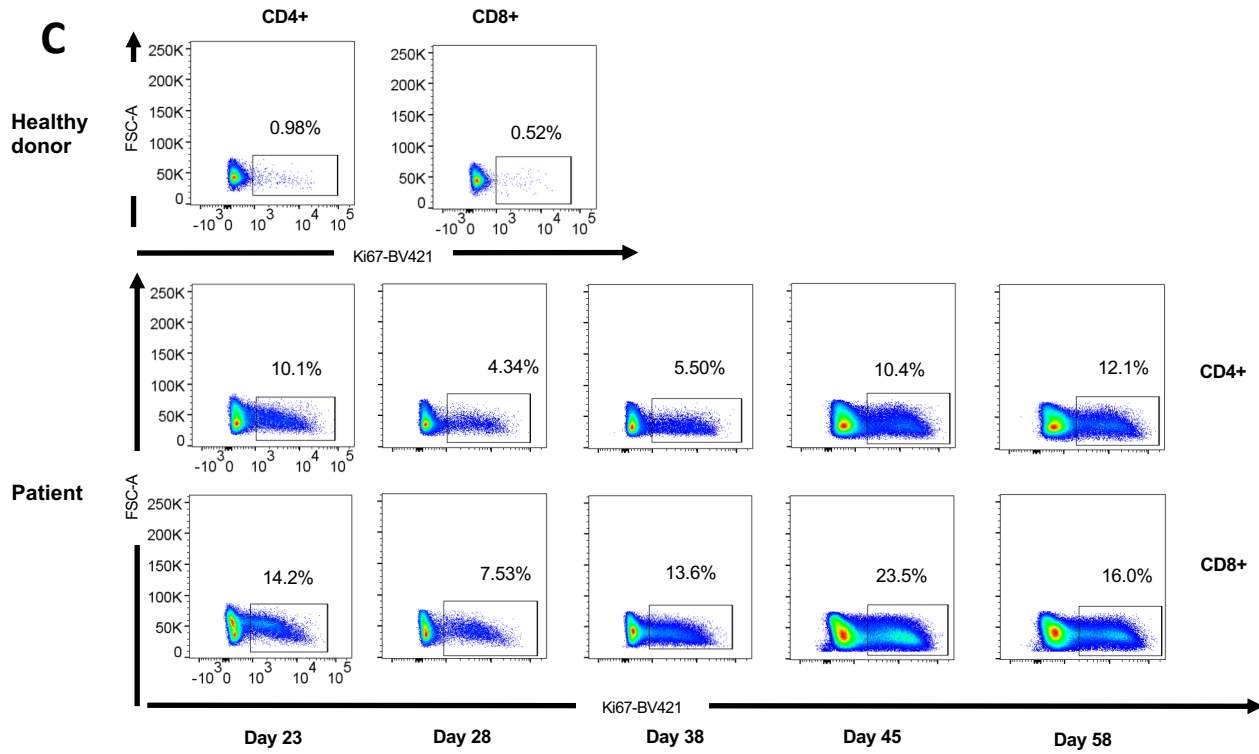
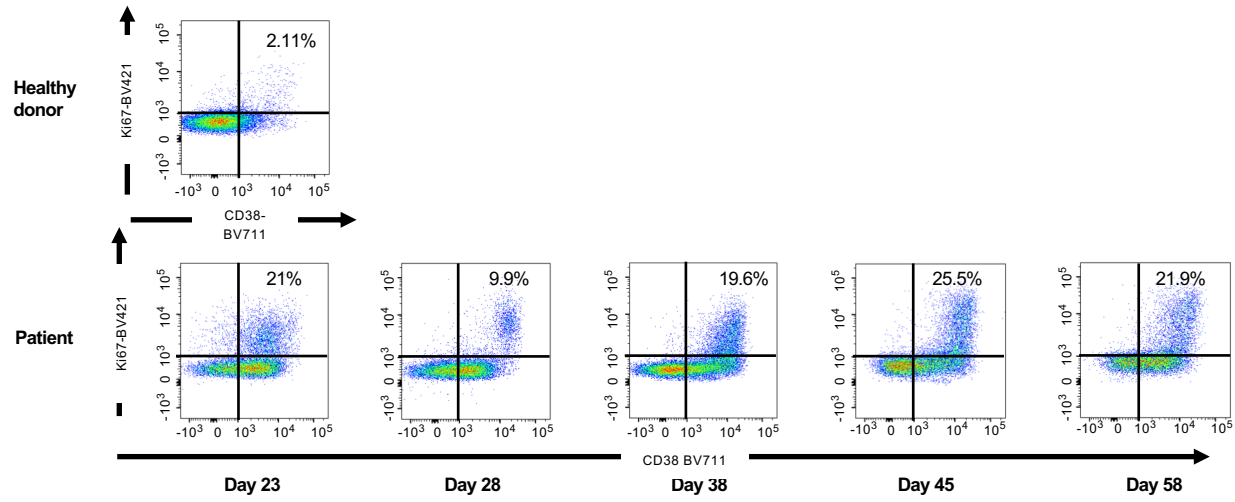


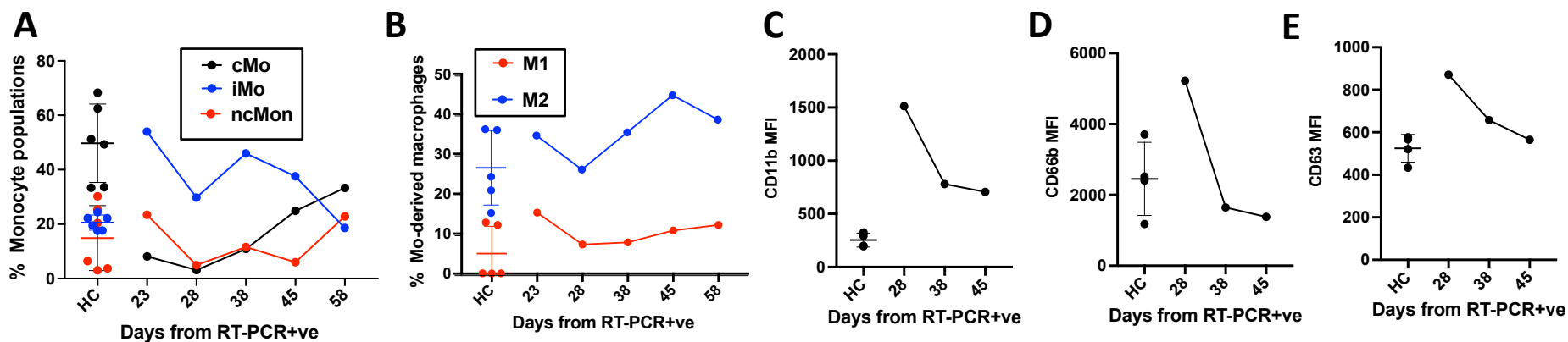
Fig S1 continued

**E**



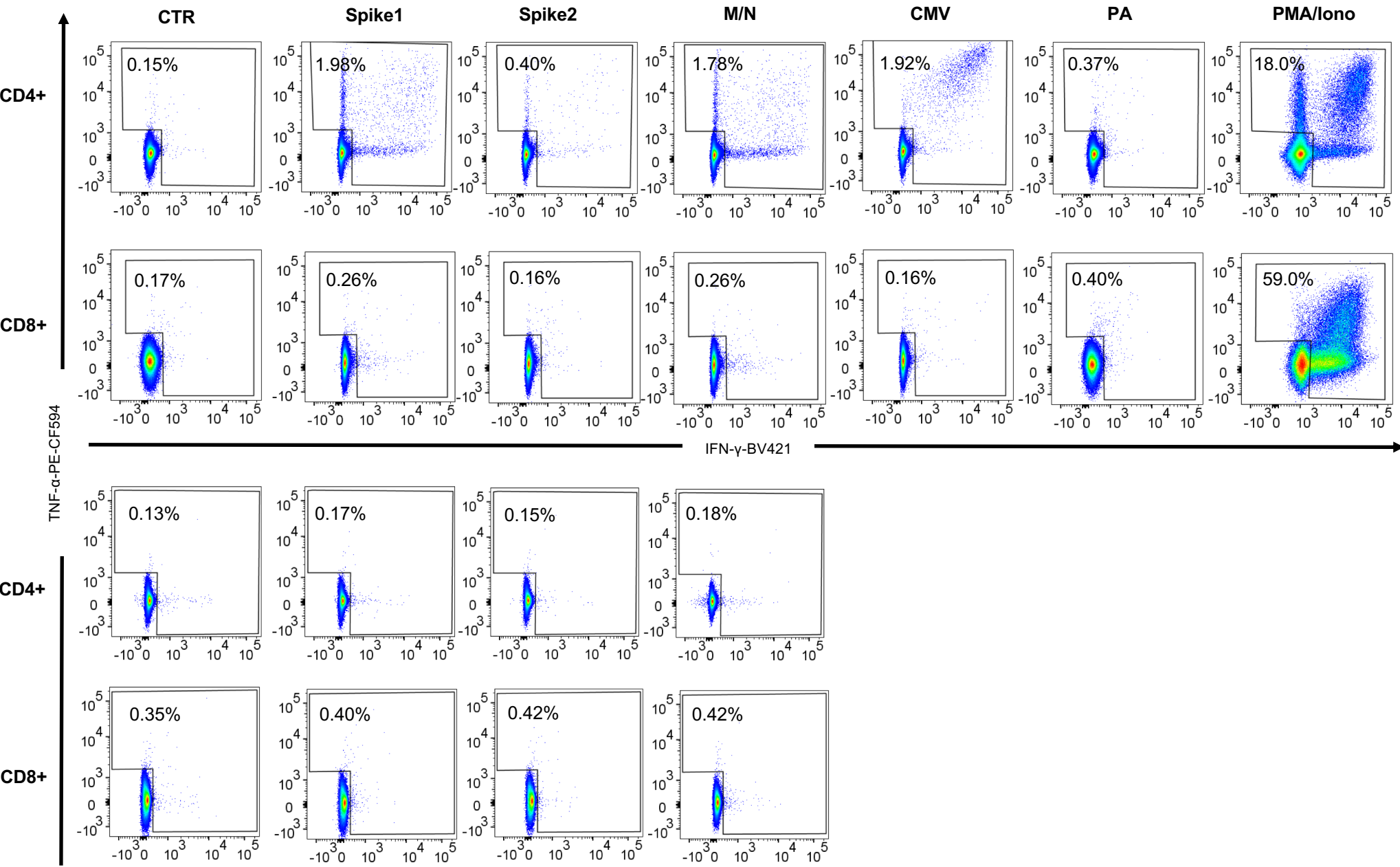
**Fig S1 continued**

**Supplementary Fig S2. A.** Percentages of CD14+ CD16- classical monocytes (cMo), CD14+ CD16+ intermediate monocytes (iMo) and CD14- CD16+ non classical monocytes (ncMo). Percentages are calculated in live, CD3-, CD66b-, HLA-DR+ cells in the COVID-19 patient and in healthy controls (n=6). **B.** Percentages of blood monocyte-derived M1 (CD14+ CD80+ CD68+) and M2 (CD14+ CD163+ CD68+) macrophages are shown for the COVID-19 patient and healthy controls. **C-E** Neutrophil degranulation measured as MFI of CD11b (secretory vesicles), CD66b (secondary granules) and CD63 (primary granules) is shown for the patient and healthy controls (n=4). Neutrophils were immunostained in whole blood, followed by erythrocyte lysis with ACK buffer and fixation with 4% PFA prior for analysis by flow cytometry. Blood monocytes and monocyte-derived macrophages were stained from PBMCs isolated by Ficoll gradient as described in the methods section.



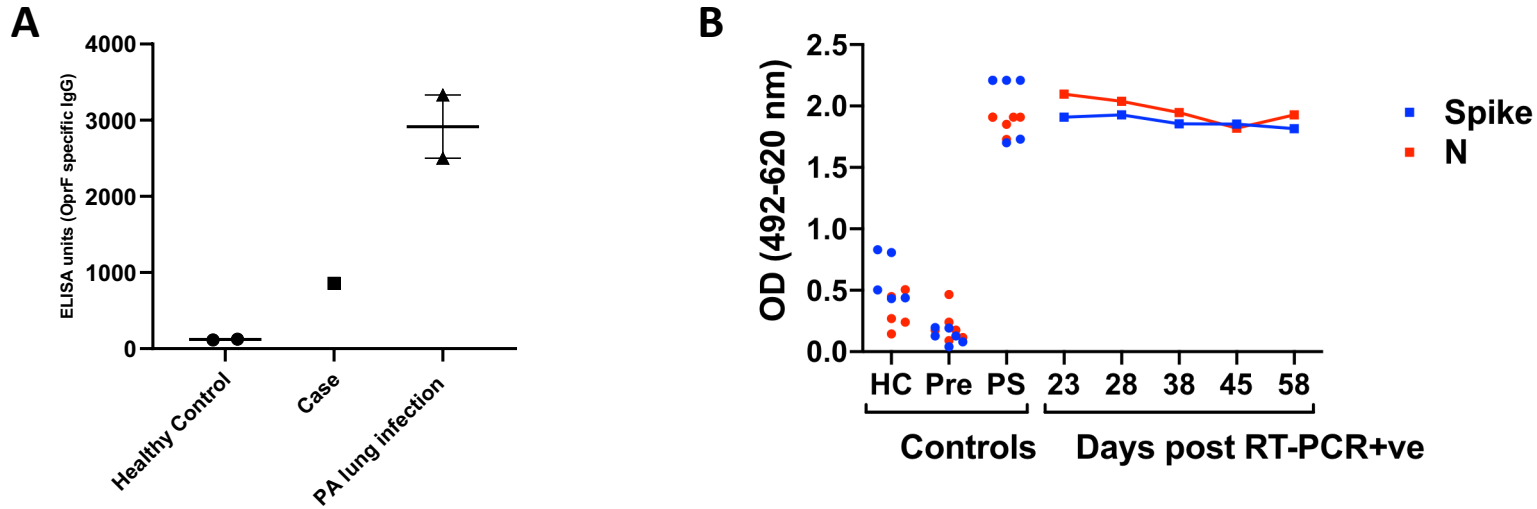
### Supplementary Fig S3.

Representative flow cytometry plots are shown for the COVID-19 patient (day 23) and an age-matched healthy control.



## Supplementary Fig S4.

**A.** Serum IgG response to *Pseudomonas aeruginosa* (PA) protein outer membrane porin F (OprF) was assessed in healthy controls (n=2), in the COVID-19 patient (n=1) and in patients with diagnosis of Cystic Fibrosis and PA infection in the lung (n=2). Data are presented mean  $\pm$  SEM. **B.** Plasma IgG responses to SARS-CoV-2 Spike and N were assessed in the COVID-19 patient at 5 timepoints. For reference we also show levels from serum of healthy control donors (HC=5), healthy pre-pandemic control donors (Pre; n=6) and a pooled serum (PS; n=3) control per plate (collected from 3 RT-PCR-confirmed convalescent donors). The optical density (OD) at 492 nm was corrected for background (620 nm) and for the blank values.



**Methods. A.** The PA antigen OprF was diluted in coating buffer, added to the wells of MaxiSorp flat-bottom 96-Well immunoplates (Thermo Fisher Scientific, USA) and incubated for 2h at 37°C. Immunoplates were blocked with 1% BSA/PBS for 1h at 37°C. Sera from were diluted and added to the immunoplates in triplicate and incubated at 4°C overnight. Biotin mouse anti-human IgG (BD Pharmingen, USA) was added to the plate and incubated for 1h at RT. Streptavidin-HRP (R&D Systems, UK) was added and for 30 mins at RT. ELISAs were developed using TMB substrate. Results were recorded using a Multiskan™ GO Microplate Spectrophotometer (Thermo Scientific, USA) and expressed as absorbance value (OD 450). OprF antigen was produced using the recombinant vector pSUMO-OprF as described previously (Quigley K et al AJRCCM).

**B.** ELISA methods were based on the protocols for measuring SARS-CoV-2 seroconversion outlined in Amanat *et al* (Nat Med, 2020) and Stadlbauer *et al* (Curr Prot Micro; 2020) with modifications. A full-length trimeric stabilized version of the SARS-CoV-2 Spike protein was expressed in insect cells using the MultiBac baculovirus expression system and affinity purified, whereas the SARS-CoV-2 N protein was expressed in, and purified from, *E. coli*. High-binding plates (MaxiSorp, NUNC) were coated with either 10 ug/ml Spike or 20 ug/ml N protein in PBS and left overnight at 4°C followed by blocking for 1 hour (3% BSA/0.1% Tween/PBS). Dilution buffer (1% BSA/0.1% Tween/PBS) containing serum or plasma samples or controls (final dilution 1 in 450, adjusting for dilution of plasma if obtained via PBMC collection) was then added to wells in duplicate and left for 2h at RT. Goat anti-human IgG-HRP (Southern Biotech) was added in dilution buffer for 1 hr, followed by development with OPD solution (Sigma) as per the manufacturer's instructions. Development was quenched after 30 minutes using 3M HCl and absorbance measured at 492 and 620 nm using a BMG FLUOstar Omega Spectrophotometer.

**Supplementary Table S1.** Details of the antibodies used for the flow cytometry experiments.

Antibody	Company	clone	concentration used
Brilliant Violet 650™ anti-human CD4	Biolegend	RPA-T4	0.625:50
Brilliant Violet 605™ anti-human HLA-DR	Biolegend	L243	2.5:50
Brilliant Violet 711™ anti-human CD38	Biolegend	HIT2	2.5:50
Zombie Aqua™ Fixable Viability Kit	Biolegend		1:1000
Brilliant Violet 421™ anti-human Ki-67	Biolegend	Ki-67	3:50
PE-CF594 Mouse Anti-Human CD56	BD Biosciences	NCAM16.2	0.5:50
PE anti-human CD16	Biolegend	3G8	2.5:50
APC/Cyanine7 anti-human CD8	Biolegend	SK1	3:50
Alexa Fluor® 700 Mouse Anti-Human CD3	BD Biosciences	UCHT1	1:50
V450 Mouse Anti-Human IFN- $\gamma$	BD Biosciences	B27	3:50
Alexa Fluor® 488 anti-human CD107a (LAMP-1)	Biolegend	H4A3	2.25:150
PE/Dazzle™ 594 anti-human TNF- $\alpha$	Biolegend	MAb11	3:50
Brilliant Violet 785™ anti-human CD163	Biolegend	GHI/61	2.5:50
Brilliant Violet 605™ anti-human CD14	Biolegend	M5E2	2.5:50
Alexa Fluor® 488 anti-human CD68	Biolegend	Y1/82A	5:50
PE/Dazzle™ 594 anti-human CD66b	Biolegend	G10F5	5:50
PE anti-human TCR $\gamma/\delta$	Biolegend	B1	2.5:50
APC/Cyanine7 anti-human CD16	Biolegend	3G8	0.5:50
APC anti-human CD80	Biolegend	2D10	2.5:50
PerCP-Cy™5.5 Mouse Anti-Human CD3	BD Biosciences	UCHT1	2:50