

1 **Supplementary material.**

2  
3 **Data sources and selection**

4 We analyzed dataset information based on the date test results were reported, regardless of the date in which the test was  
5 done. Because the databases do not have information on when the test result was reported, we obtained this by information  
6 by comparing every database uploaded between April 12th and August 21st by individual identifier. For example, if an  
7 individual was tested at May 1st their result will appear “pending” in all daily uploaded databases until the test result is in  
8 and registered. This could be a couple of days or weeks from the testing date. Regardless, if the test result is first available  
9 in the database uploaded on May 10th, that is the date in which the individual will be counted. We used as report date for  
10 an individual, the entry date of the first dataset with a positive or negative result of his/her test. This was not possible for  
11 people tested before April 12th and already had a result, so their result was included as the baseline count.

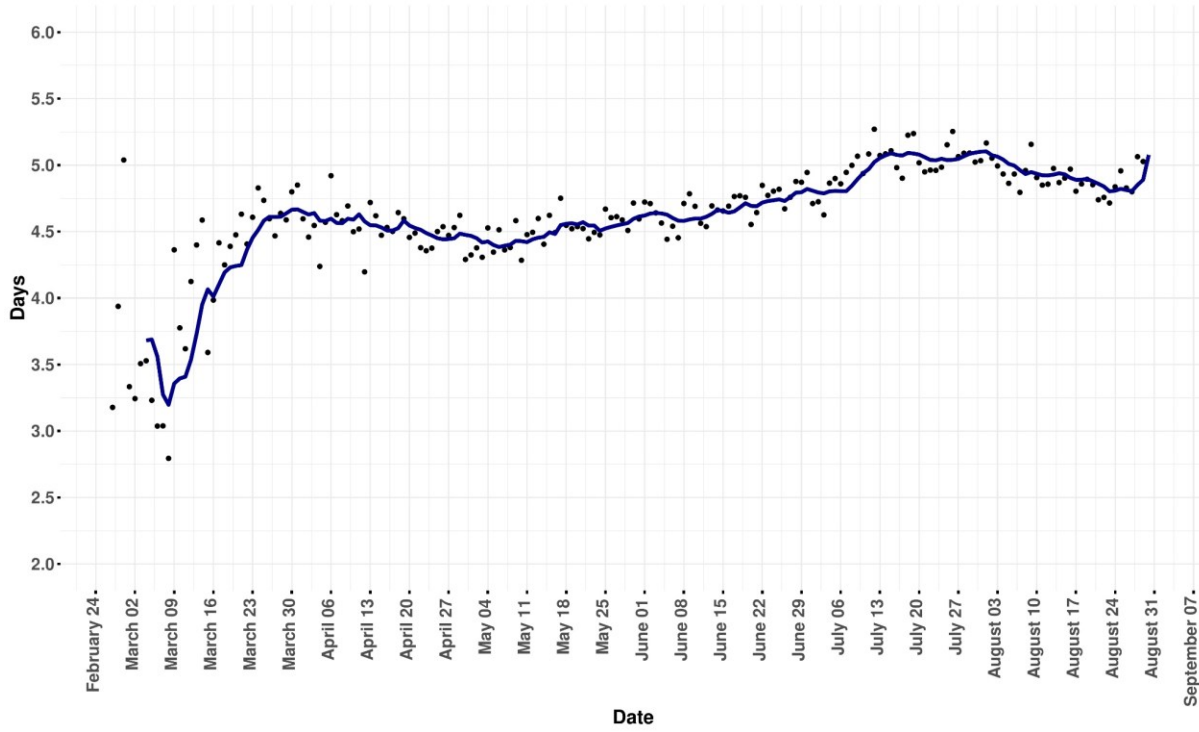
12 The final total tests (1 280 910) were obtained by adding new cases present in the current database to those accumulated  
13 until that date, removing in the process all patients that met exclusion criteria. In the August 31st database a total of 1 343  
14 730 tests were reported (once exclusion criteria were applied), with 77 728 records having a pending test result, 1208  
15 patients had >21 days with symptoms at time of testing, and none had a missing ID, a total of 1 264 794. There remains a  
16 difference of 16 116 patients. All databases supposedly include all information present in previous databases. The  
17 discrepancy in total tests is explained because this is not always the case, as during the analysis we observed that some  
18 patients included in early databases were sometimes excluded from later databases. We believe that this does not interfere  
19 with our methods or estimates, as those changes were done retrospectively and we use cases as they are reported to make  
20 estimates in real time.

21  
22 **Table S1. Calculated test sensitivities.**

Day of symptoms	Test Sensitivity (95% CL)
1	62% (35-82%)
2	75% (60-86%)
3	80% (69-88%)
4	81% (71-88%)
5	80% (70-87%)
6	78% (68-85%)
7	75% (64-83%)
8	72% (60-80%)
9	68% (56-77%)
10	63% (51-73%)
11	59% (47-70%)
12	55% (42-66%)
13	50% (38-62%)
14	47% (34-58%)
15	43% (31-55%)
16	40% (28-52%)
17	37% (26-49%)
18	35% (24-46%)
19	32% (22-44%)
20	31% (20-42%)
21	29% (19-40%)

23 Day one of symptoms is the day symptoms started. Test sensitivities were obtained from an adjustment of the analysis by  
24 Kucirka et al. Test sensitivity was rounded to nearest integer for clarity. Represented in parentheses are the 95% confidence  
25 limits.

26 Figure S1. 7 day moving average of time from symptom onset to testing



27  
28  
29  
30  
31  
32  
33  
34  
35  
36  
37  
38  
39  
40  
41  
42  
43  
44  
45  
46  
47  
48  
49  
50  
51  
52

53 **BY STATE ANALYSES**

54 **The rest of the supplementary material presents the main analysis stratified by state. All graphs represent the average**  
 55 **test estimates.**

56

57

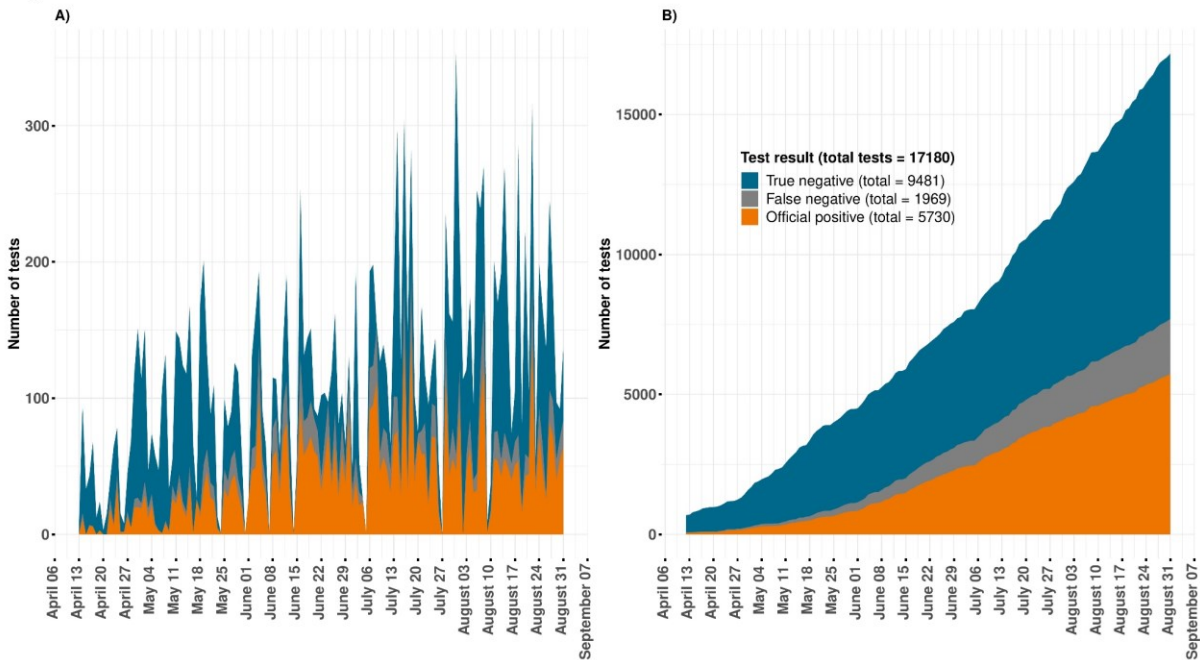
**Table SE. Official and estimated COVID-19 cases by date of reporting in AGUASCALIENTES**

Variable	Official count	Average test estimates	Best test estimates	Worst test estimates
N	17 180	17 180	17 180	17 180
Positive tests	5730 (33.4%)	7699 (44.8%)	6516 (37.9%)	10 028 (58.4%)
Negative tests	11 450 (66.6%)	9481 (55.2%)	10 664 (62.1%)	7152 (41.6%)
Estimated false negative tests	-	1969 (11.5%)	786 (4.6%)	4298 (25%)
Overall ICU count	28	35	28	56
Overall Death count	48	63	51	85

58

59

**Figure SE. AGUASCALIENTES**



Study period February 27 – August 31 (shown from April 13). A) represents daily counts, while B) represents accumulated cases.

60

61

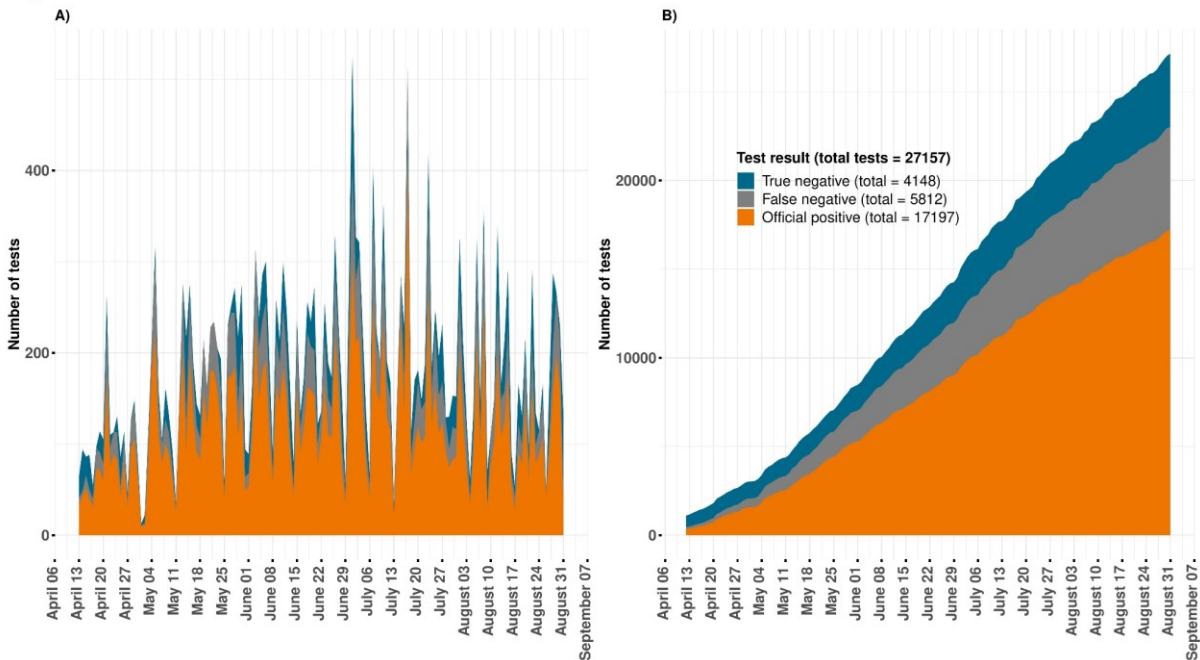
**Table SE. Official and estimated COVID-19 cases by date of reporting in BAJA CALIFORNIA**

Variable	Official count	Average test estimates	Best test estimates	Worst test estimates
N	27 157	27 157	27 157	27 157
Positive tests	17 197 (63.3%)	23 009 (84.7%)	19 719 (72.6%)	27 157 (100%)
Negative tests	9960 (36.7%)	4148 (15.3%)	7438 (27.4%)	0 (0%)
Estimated false negative tests	-	5812 (21.4%)	2522 (9.3%)	9960 (36.7%)
Overall ICU count	94	139	102	182
Overall Death count	1036	1804	1373	2707

62

63

**Figure SE. BAJA CALIFORNIA**



Study period February 27 – August 31 (shown from April 13). A) represents daily counts, while B) represents accumulated cases.

64

65

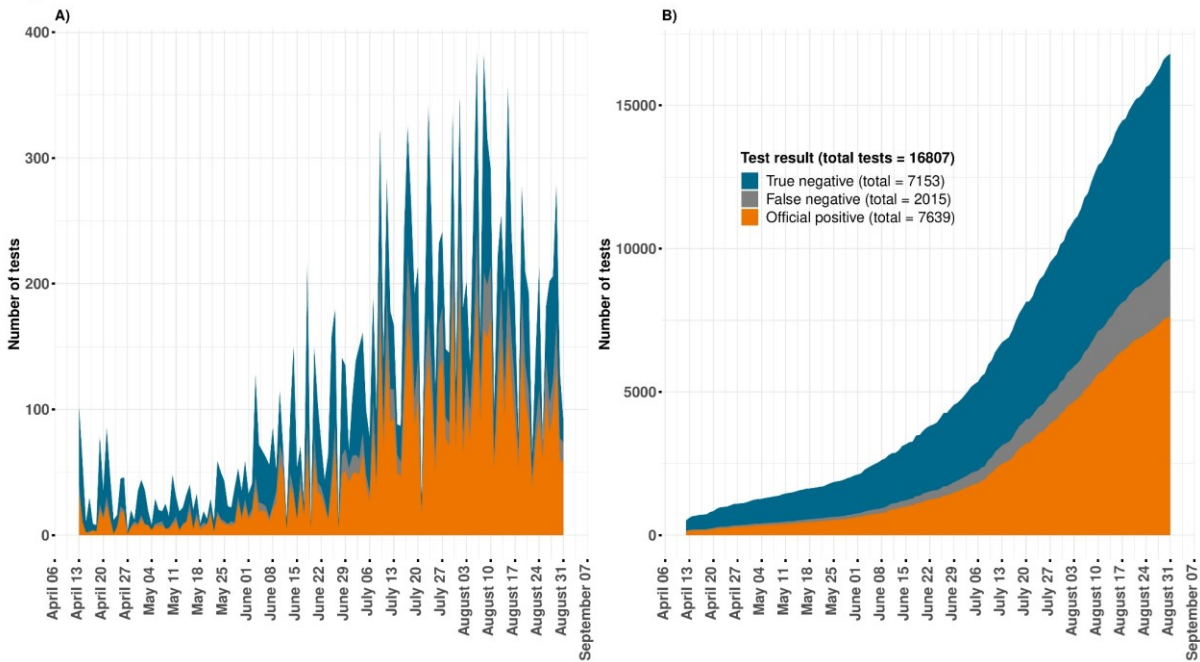
**Table SE. Official and estimated COVID-19 cases by date of reporting in BAJA CALIFORNIA SUR**

Variable	Official count	Average test estimates	Best test estimates	Worst test estimates
N	16 807	16 807	16 807	16 807
Positive tests	7639 (45.5%)	9654 (57.4%)	8583 (51.1%)	11 933 (71%)
Negative tests	9168 (54.5%)	7153 (42.6%)	8224 (48.9%)	4874 (29%)
Estimated false negative tests	-	2015 (12%)	944 (5.6%)	4294 (25.5%)
Overall ICU count	70	77	70	90
Overall Death count	27	28	27	41

66

67

**Figure SE. BAJA CALIFORNIA SUR**



Study period February 27 – August 31 (shown from April 13). A) represents daily counts, while B) represents accumulated cases.

68

69

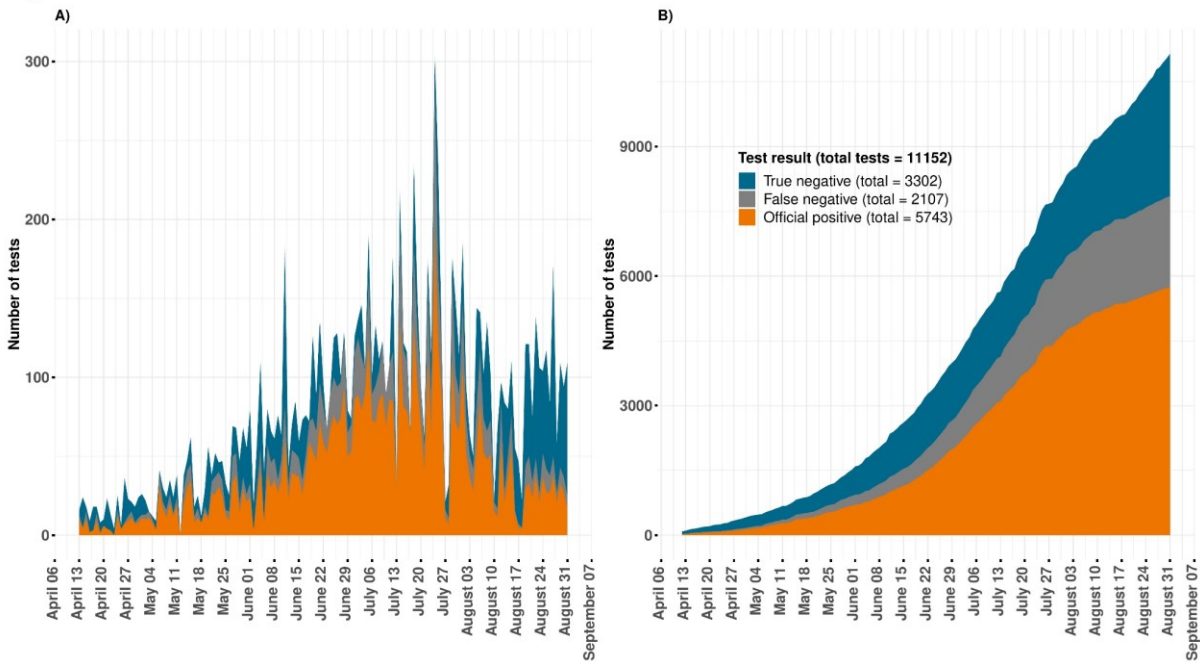
**Table SE. Official and estimated COVID-19 cases by date of reporting in CAMPECHE**

Variable	Official count	Average test estimates	Best test estimates	Worst test estimates
N	11 152	11 152	11 152	11 152
Positive tests	5743 (51.5%)	7850 (70.4%)	6704 (60.1%)	10 048 (90.1%)
Negative tests	5409 (48.5%)	3302 (29.6%)	4448 (39.9%)	1104 (9.9%)
Estimated false negative tests	-	2107 (18.9%)	961 (8.6%)	4305 (38.6%)
Overall ICU count	224	249	231	280
Overall Death count	112	218	160	329

70

71

**Figure SE. CAMPECHE**



Study period February 27 – August 31 (shown from April 13). A) represents daily counts, while B) represents accumulated cases.

72

73

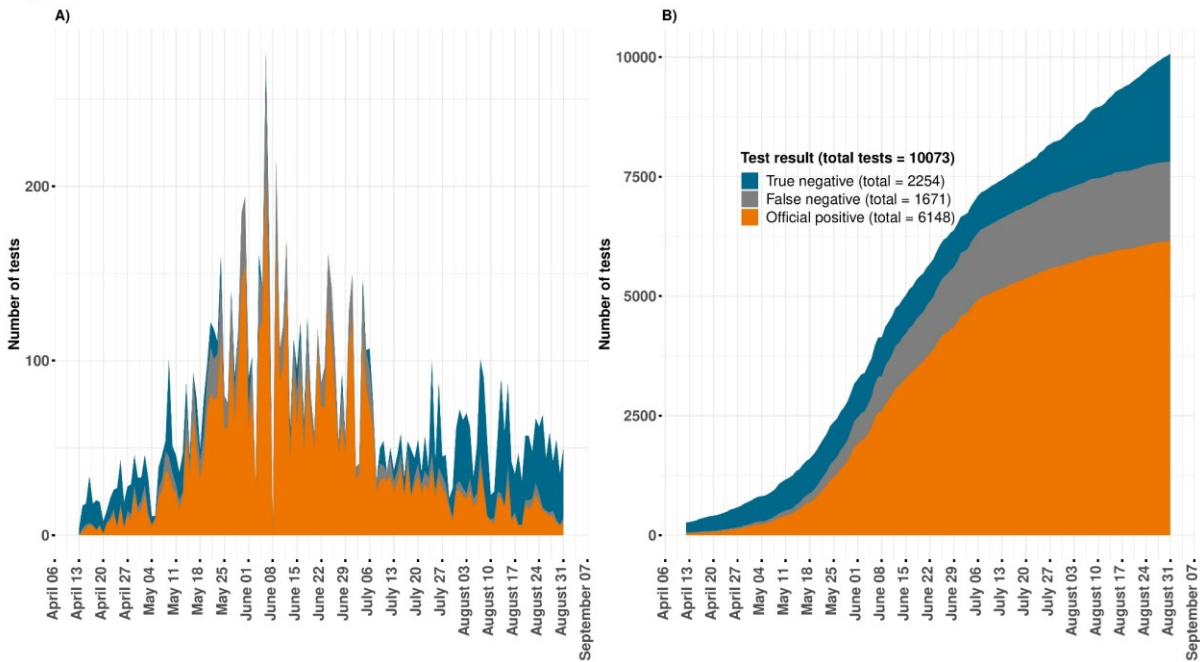
**Table SE. Official and estimated COVID-19 cases by date of reporting in CHIAPAS**

Variable	Official count	Average test estimates	Best test estimates	Worst test estimates
N	10 073	10 073	10 073	10 073
Positive tests	6148 (61%)	7819 (77.6%)	6803 (67.5%)	9887 (98.2%)
Negative tests	3925 (39%)	2254 (22.4%)	3270 (32.5%)	186 (1.8%)
Estimated false negative tests	-	1671 (16.6%)	655 (6.5%)	3739 (37.1%)
Overall ICU count	198	229	208	281
Overall Death count	277	526	361	847

74

75

**Figure SE. CHIAPAS**



Study period February 27 – August 31 (shown from April 13). A) represents daily counts, while B) represents accumulated cases.

76

77

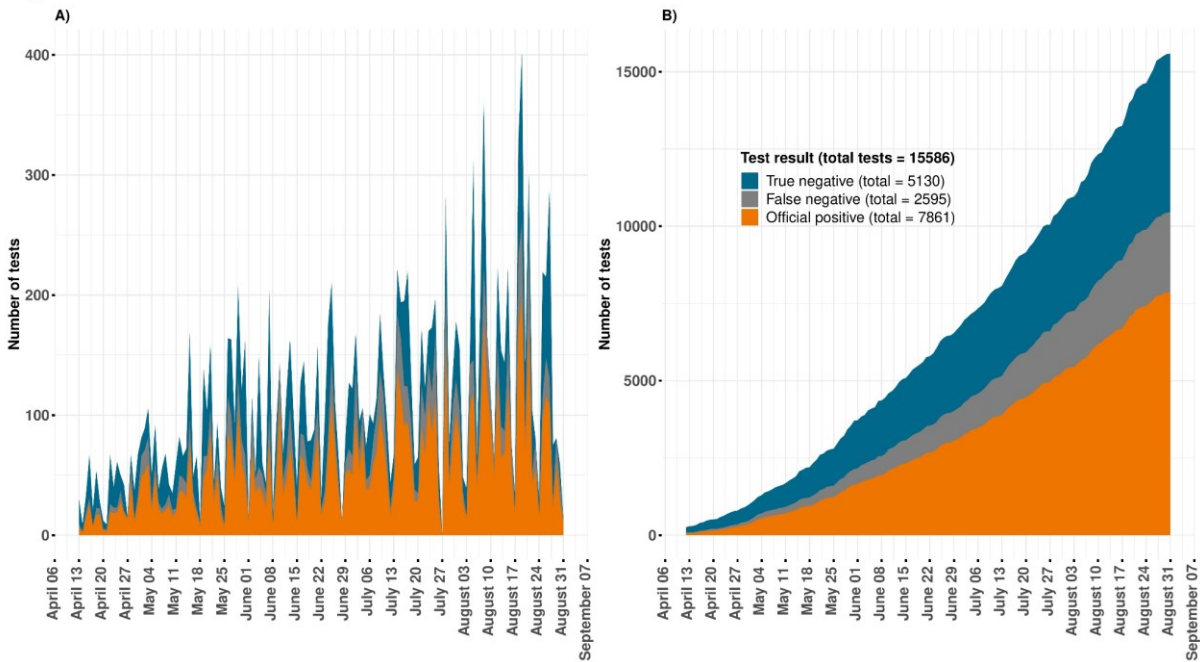
**Table SE. Official and estimated COVID-19 cases by date of reporting in CHIHUAHUA**

Variable	Official count	Average test estimates	Best test estimates	Worst test estimates
N	15 586	15 586	15 586	15 586
Positive tests	7861 (50.4%)	10 456 (67.1%)	8638 (55.4%)	14 257 (91.5%)
Negative tests	7725 (49.6%)	5130 (32.9%)	6948 (44.6%)	1329 (8.5%)
Estimated false negative tests	-	2595 (16.6%)	777 (5%)	6396 (41%)
Overall ICU count	603	744	638	956
Overall Death count	456	637	500	909

78

79

**Figure SE. CHIHUAHUA**



Study period February 27 – August 31 (shown from April 13). A) represents daily counts, while B) represents accumulated cases.

80

81



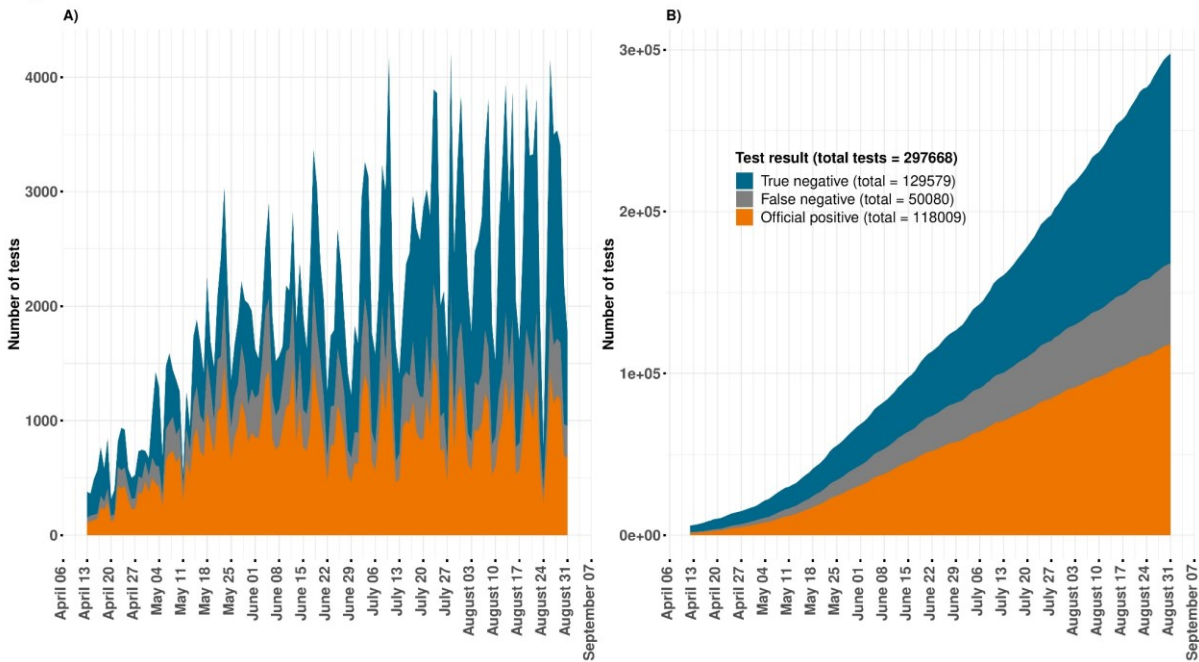
**Table SE. Official and estimated COVID-19 cases by date of reporting in CIUDAD DE MEXICO**

Variable	Official count	Average test estimates	Best test estimates	Worst test estimates
N	297 668	297 668	297 668	297 668
Positive tests	118 009 (39.6%)	168 089 (56.5%)	144 621 (48.6%)	220 218 (74%)
Negative tests	179 659 (60.4%)	129 579 (43.5%)	153 047 (51.4%)	77 450 (26%)
Estimated false negative tests	-	50 080 (16.8%)	26 612 (8.9%)	102 209 (34.3%)
Overall ICU count	1438	1755	1604	2077
Overall Death count	2116	2829	2490	3569

82

83

**Figure SE. CIUDAD DE MÉXICO**



Study period February 27 – August 31 (shown from April 13). A) represents daily counts, while B) represents accumulated cases.

84

85

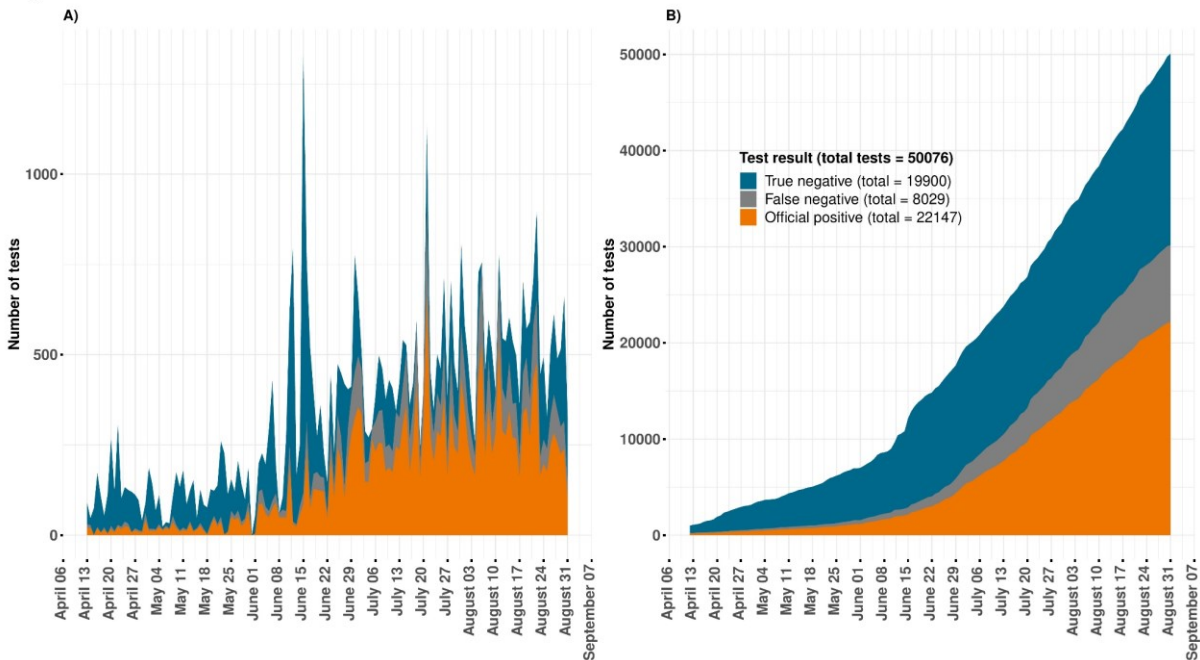
**Table SE. Official and estimated COVID-19 cases by date of reporting in COAHUILA**

Variable	Official count	Average test estimates	Best test estimates	Worst test estimates
N	50 076	50 076	50 076	50 076
Positive tests	22 147 (44.2%)	30 176 (60.3%)	25 862 (51.6%)	39 774 (79.4%)
Negative tests	27 929 (55.8%)	19 900 (39.7%)	24 214 (48.4%)	10 302 (20.6%)
Estimated false negative tests	-	8029 (16%)	3715 (7.4%)	17 627 (35.2%)
Overall ICU count	58	83	69	115
Overall Death count	465	684	570	950

86

87

**Figure SE. COAHUILA**



88

89

Study period February 27 – August 31 (shown from April 13). A) represents daily counts, while B) represents accumulated cases.

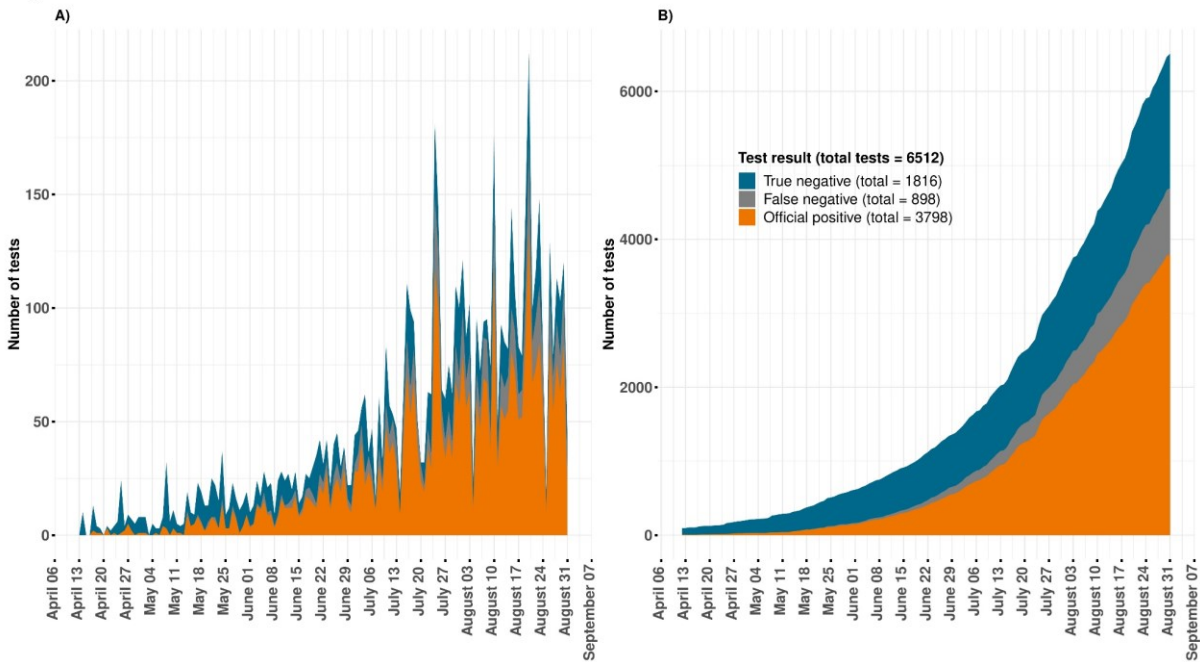
**Table SE. Official and estimated COVID-19 cases by date of reporting in COLIMA**

Variable	Official count	Average test estimates	Best test estimates	Worst test estimates
N	6512	6512	6512	6512
Positive tests	3798 (58.3%)	4696 (72.1%)	4222 (64.8%)	5728 (88%)
Negative tests	2714 (41.7%)	1816 (27.9%)	2290 (35.2%)	784 (12%)
Estimated false negative tests	-	898 (13.8%)	424 (6.5%)	1930 (29.6%)
Overall ICU count	82	92	85	112
Overall Death count	106	147	122	206

90

91

**Figure SE. COLIMA**



Study period February 27 – August 31 (shown from April 13). A) represents daily counts, while B) represents accumulated cases.

92

93

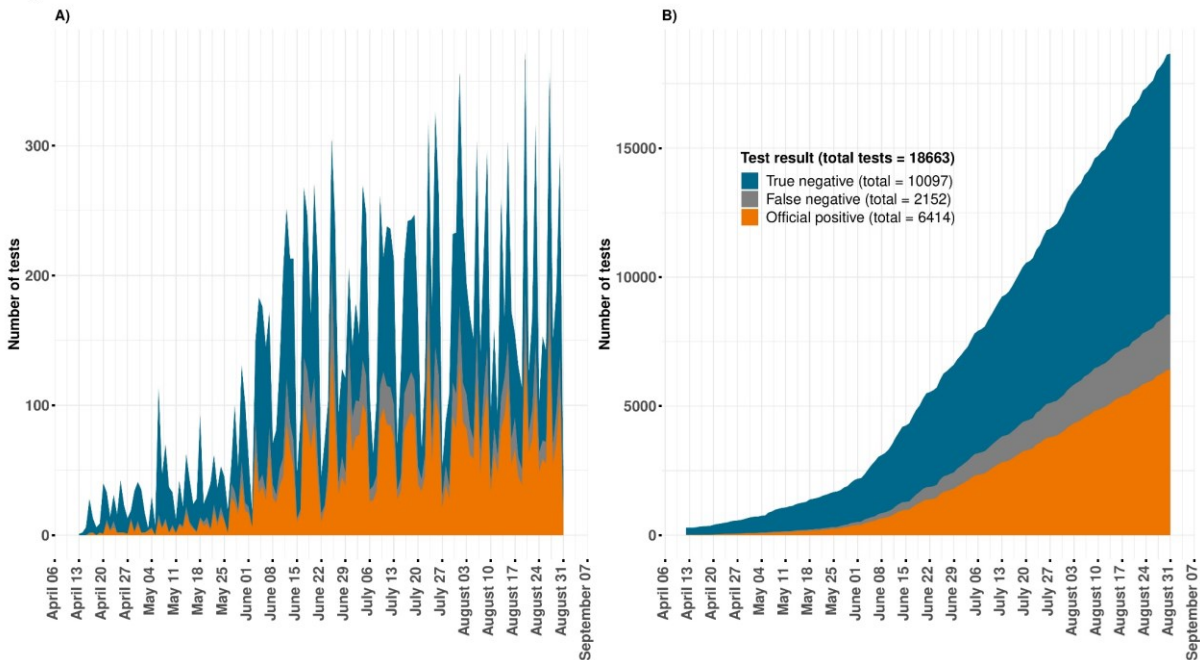
**Table SE. Official and estimated COVID-19 cases by date of reporting in DURANGO**

Variable	Official count	Average test estimates	Best test estimates	Worst test estimates
N	18 663	18 663	18 663	18 663
Positive tests	6414 (34.4%)	8566 (45.9%)	7378 (39.5%)	11 209 (60.1%)
Negative tests	12 249 (65.6%)	10 097 (54.1%)	11 285 (60.5%)	7454 (39.9%)
Estimated false negative tests	-	2152 (11.5%)	964 (5.2%)	4795 (25.7%)
Overall ICU count	80	86	80	94
Overall Death count	35	38	35	44

94

95

**Figure SE. DURANGO**



Study period February 27 – August 31 (shown from April 13). A) represents daily counts, while B) represents accumulated cases.

96

97

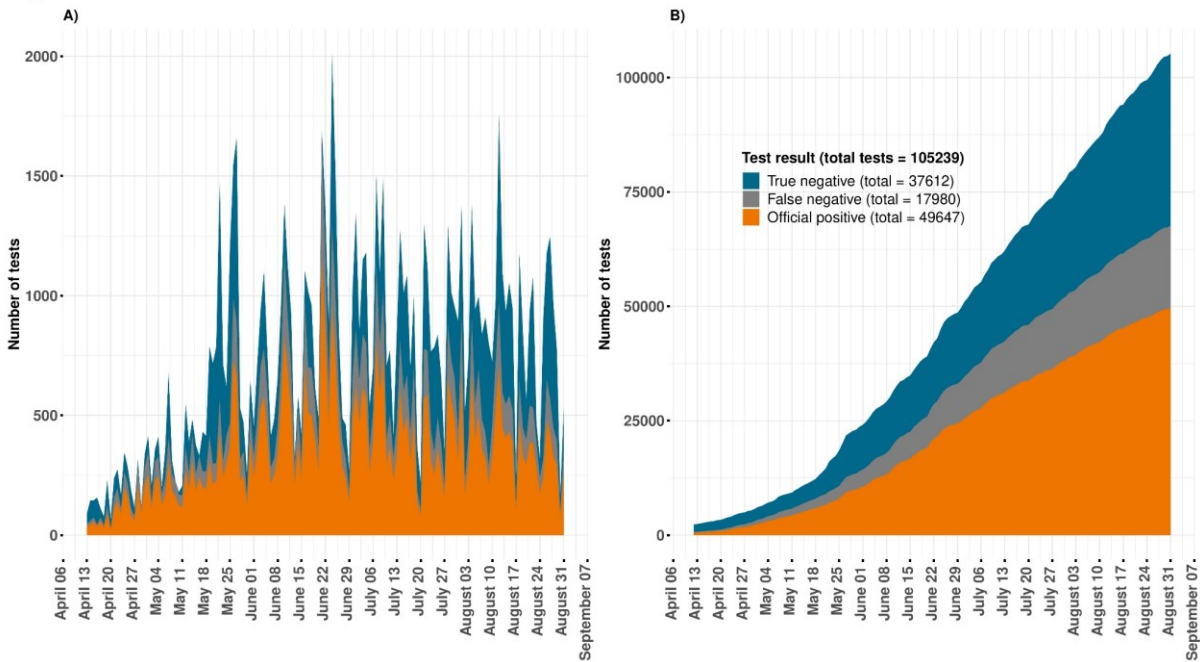
**Table SE. Official and estimated COVID-19 cases by date of reporting in ESTADO DE MÉXICO**

Variable	Official count	Average test estimates	Best test estimates	Worst test estimates
N	105 239	105 239	105 239	105 239
Positive tests	49 647 (47.2%)	67 627 (64.3%)	58 513 (55.6%)	87 646 (83.3%)
Negative tests	55 592 (52.8%)	37 612 (35.7%)	46 726 (44.4%)	17 593 (16.7%)
Estimated false negative tests	-	17 980 (17.1%)	8866 (8.4%)	37 999 (36.1%)
Overall ICU count	687	809	734	942
Overall Death count	2924	4348	3595	6065

98

99

**Figure SE. ESTADO DE MÉXICO**



Study period February 27 – August 31 (shown from April 13). A) represents daily counts, while B) represents accumulated cases.

100

101

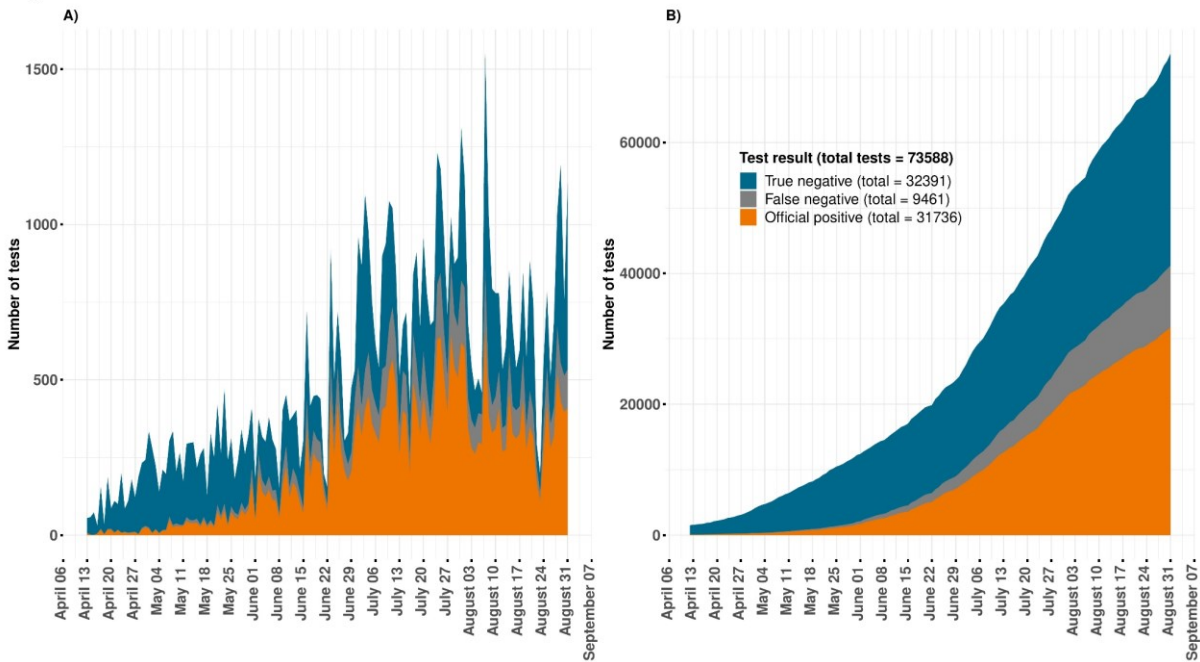
**Table SE. Official and estimated COVID-19 cases by date of reporting in GUANAJUATO**

Variable	Official count	Average test estimates	Best test estimates	Worst test estimates
N	73 588	73 588	73 588	73 588
Positive tests	31 736 (43.1%)	41 197 (56%)	36 692 (49.9%)	50 156 (68.2%)
Negative tests	41 852 (56.9%)	32 391 (44%)	36 896 (50.1%)	23 432 (31.8%)
Estimated false negative tests	-	9461 (12.9%)	4956 (6.7%)	18 420 (25%)
Overall ICU count	261	289	267	332
Overall Death count	465	600	532	739

102

103

**Figure SE. GUANAJUATO**



Study period February 27 – August 31 (shown from April 13). A) represents daily counts, while B) represents accumulated cases.

104

105

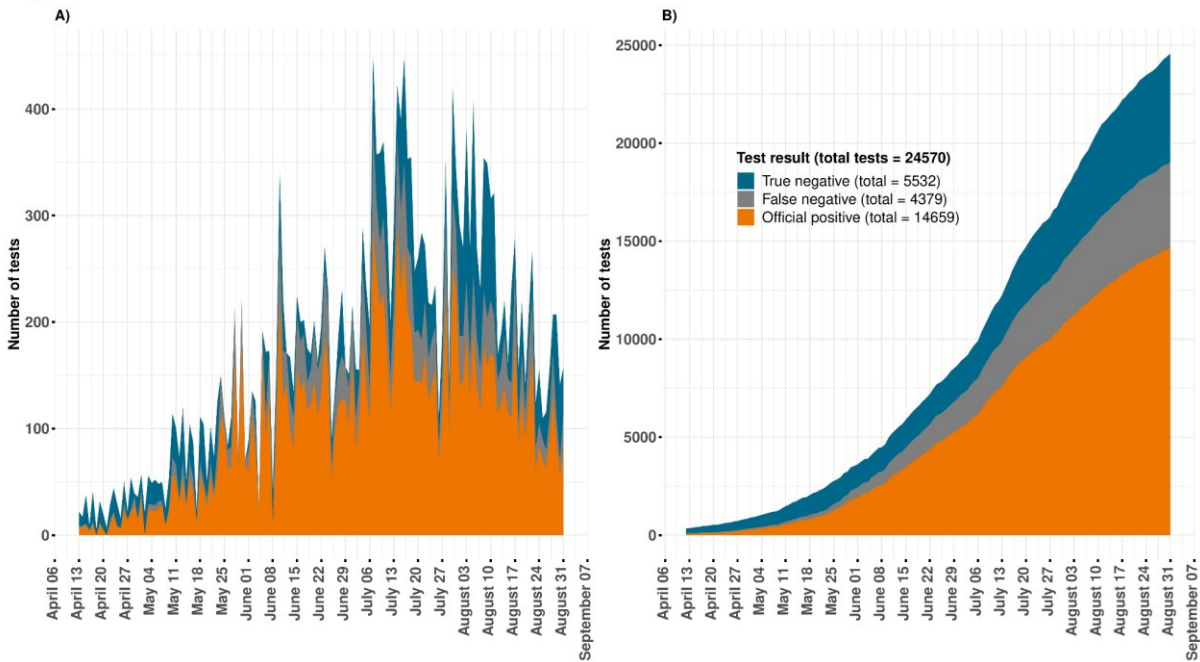
**Table SE. Official and estimated COVID-19 cases by date of reporting in GUERRERO**

Variable	Official count	Average test estimates	Best test estimates	Worst test estimates
N	24 570	24 570	24 570	24 570
Positive tests	14 659 (59.7%)	19 038 (77.5%)	16 860 (68.6%)	23 298 (94.8%)
Negative tests	9911 (40.3%)	5532 (22.5%)	7710 (31.4%)	1272 (5.2%)
Estimated false negative tests	-	4379 (17.8%)	2201 (9%)	8639 (35.2%)
Overall ICU count	375	436	394	500
Overall Death count	604	1030	814	1449

106

107

**Figure SE. GUERRERO**



Study period February 27 – August 31 (shown from April 13). A) represents daily counts, while B) represents accumulated cases.

108

109



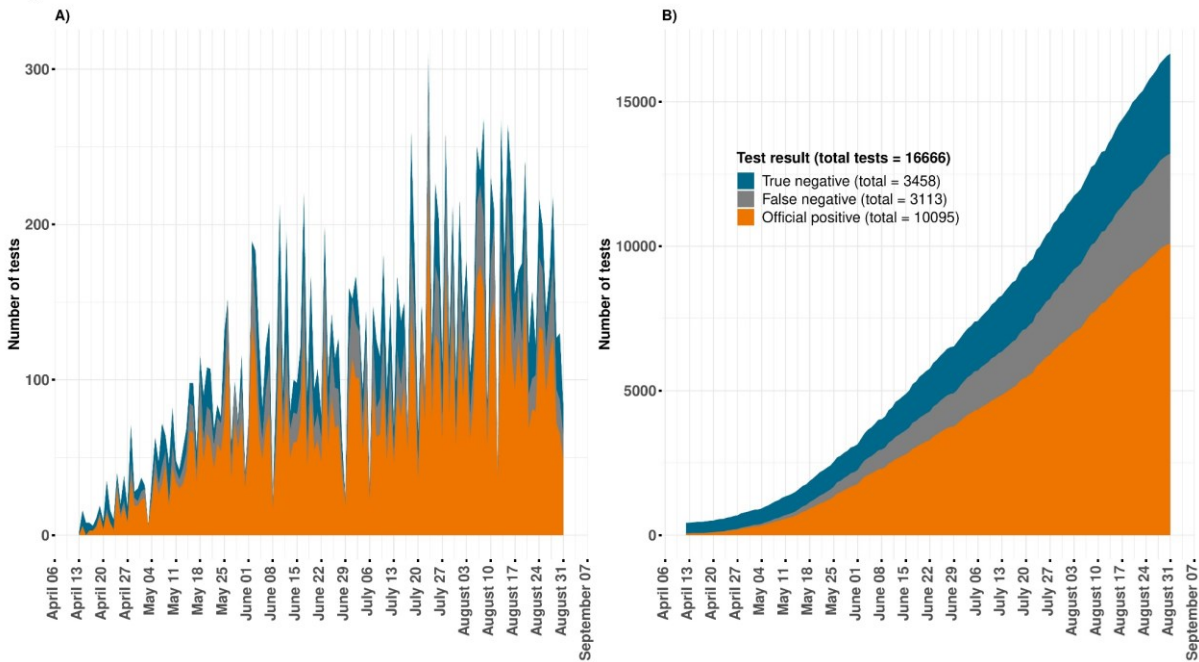
**Table SE. Official and estimated COVID-19 cases by date of reporting in HIDALGO**

Variable	Official count	Average test estimates	Best test estimates	Worst test estimates
N	16 666	16 666	16 666	16 666
Positive tests	10 095 (60.6%)	13 208 (79.3%)	11 517 (69.1%)	16 365 (98.2%)
Negative tests	6571 (39.4%)	3458 (20.7%)	5149 (30.9%)	301 (1.8%)
Estimated false negative tests	-	3113 (18.7%)	1422 (8.5%)	6270 (37.6%)
Overall ICU count	116	135	118	163
Overall Death count	348	537	426	752

110

111

**Figure SE. HIDALGO**



Study period February 27 – August 31 (shown from April 13). A) represents daily counts, while B) represents accumulated cases.

112

113



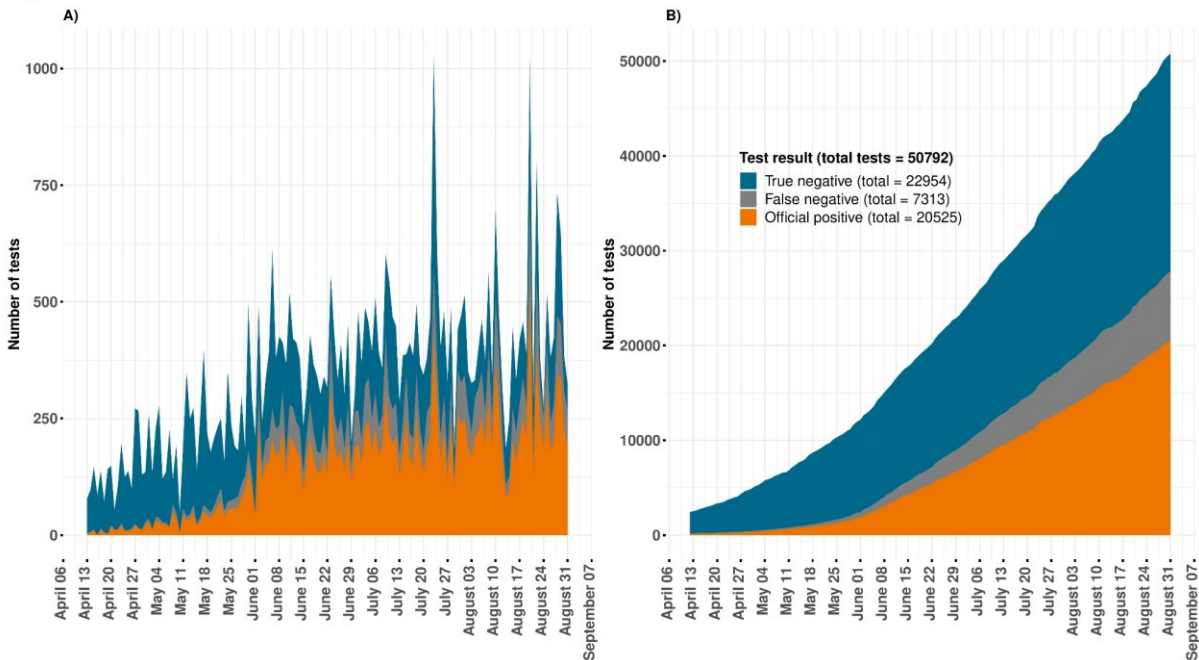
**Table SE. Official and estimated COVID-19 cases by date of reporting in JALISCO**

Variable	Official count	Average test estimates	Best test estimates	Worst test estimates
N	50 792	50 792	50 792	50 792
Positive tests	20 525 (40.4%)	27 838 (54.8%)	24 089 (47.4%)	35 906 (70.7%)
Negative tests	30 267 (59.6%)	22 954 (45.2%)	26 703 (52.6%)	14 886 (29.3%)
Estimated false negative tests	-	7313 (14.4%)	3564 (7%)	15 381 (30.3%)
Overall ICU count	488	567	526	662
Overall Death count	523	698	612	895

114

115

**Figure SE. JALISCO**



Study period February 27 – August 31 (shown from April 13). A) represents daily counts, while B) represents accumulated cases.

116

117

118

119

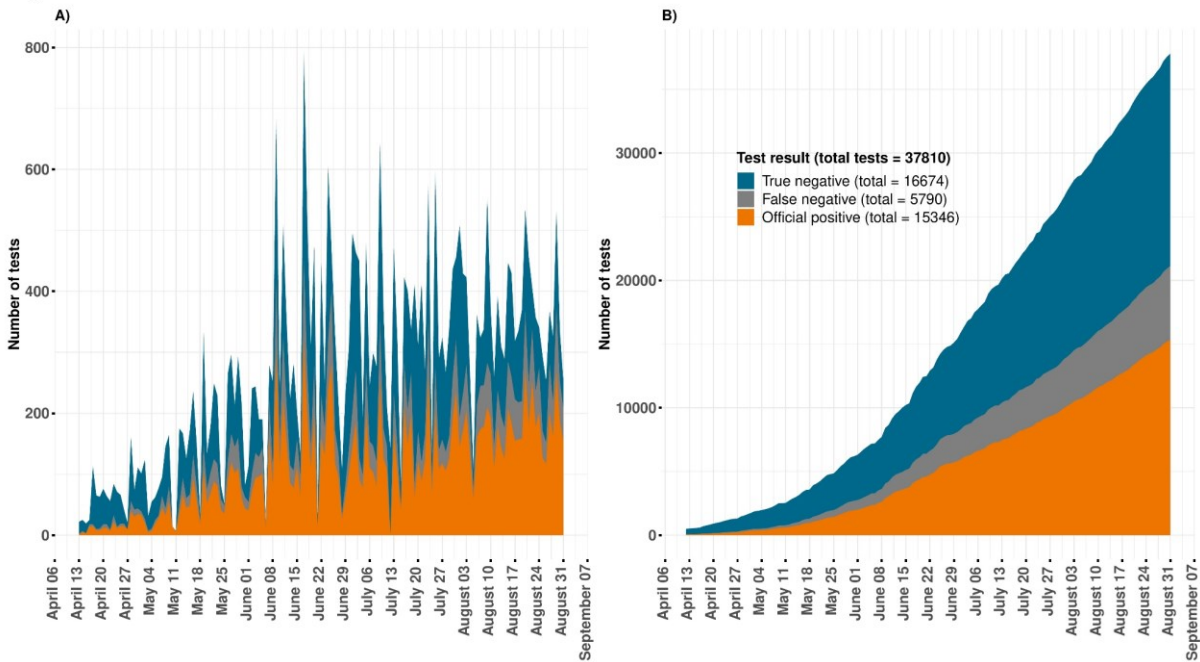
**Table SE. Official and estimated COVID-19 cases by date of reporting in MICHOACÁN**

Variable	Official count	Average test estimates	Best test estimates	Worst test estimates
N	37 810	37 810	37 810	37 810
Positive tests	15 346 (40.6%)	21 136 (55.9%)	18 357 (48.6%)	26 676 (70.6%)
Negative tests	22 464 (59.4%)	16 674 (44.1%)	19 453 (51.4%)	11 134 (29.4%)
Estimated false negative tests	-	5790 (15.3%)	3011 (8%)	11 330 (30%)
Overall ICU count	88	108	93	143
Overall Death count	305	394	351	492

120

121

**Figure SE. MICHOACÁN**



Study period February 27 – August 31 (shown from April 13). A) represents daily counts, while B) represents accumulated cases.

122

123

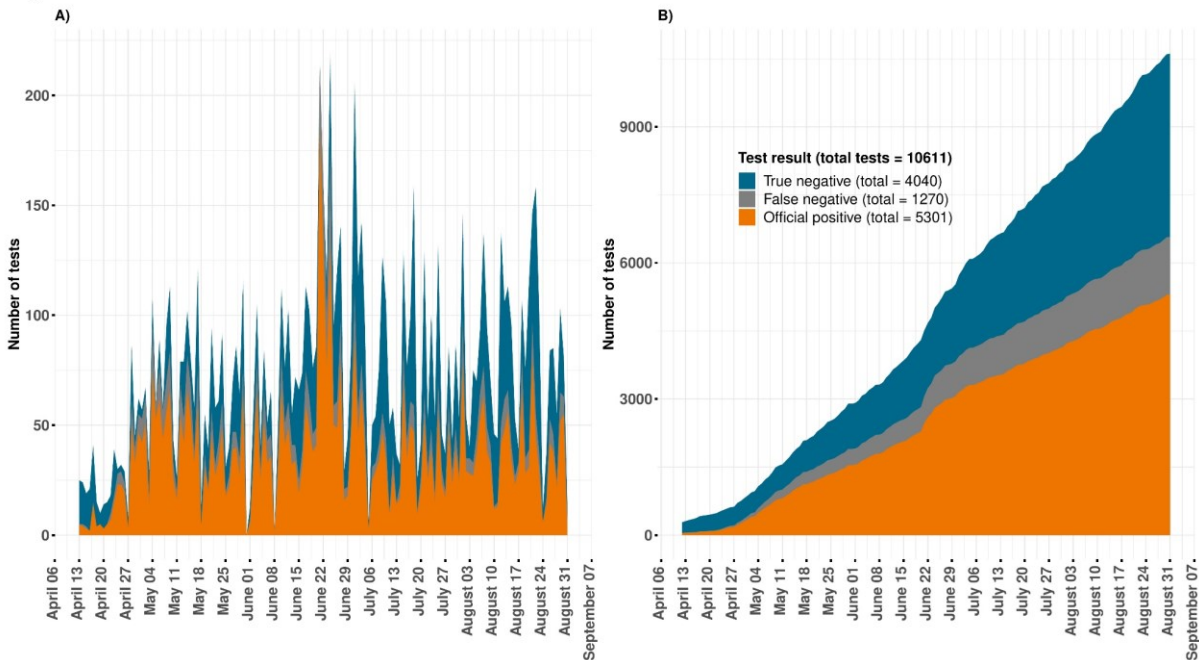
**Table SE. Official and estimated COVID-19 cases by date of reporting in MORELOS**

Variable	Official count	Average test estimates	Best test estimates	Worst test estimates
N	10 611	10 611	10 611	10 611
Positive tests	5301 (50%)	6571 (61.9%)	5743 (54.1%)	8308 (78.3%)
Negative tests	5310 (50%)	4040 (38.1%)	4868 (45.9%)	2303 (21.7%)
Estimated false negative tests	-	1270 (12%)	442 (4.2%)	3007 (28.3%)
Overall ICU count	41	43	41	51
Overall Death count	421	920	523	1714

124

125

**Figure SE. MORELOS**



Study period February 27 – August 31 (shown from April 13). A) represents daily counts, while B) represents accumulated cases.

126

127

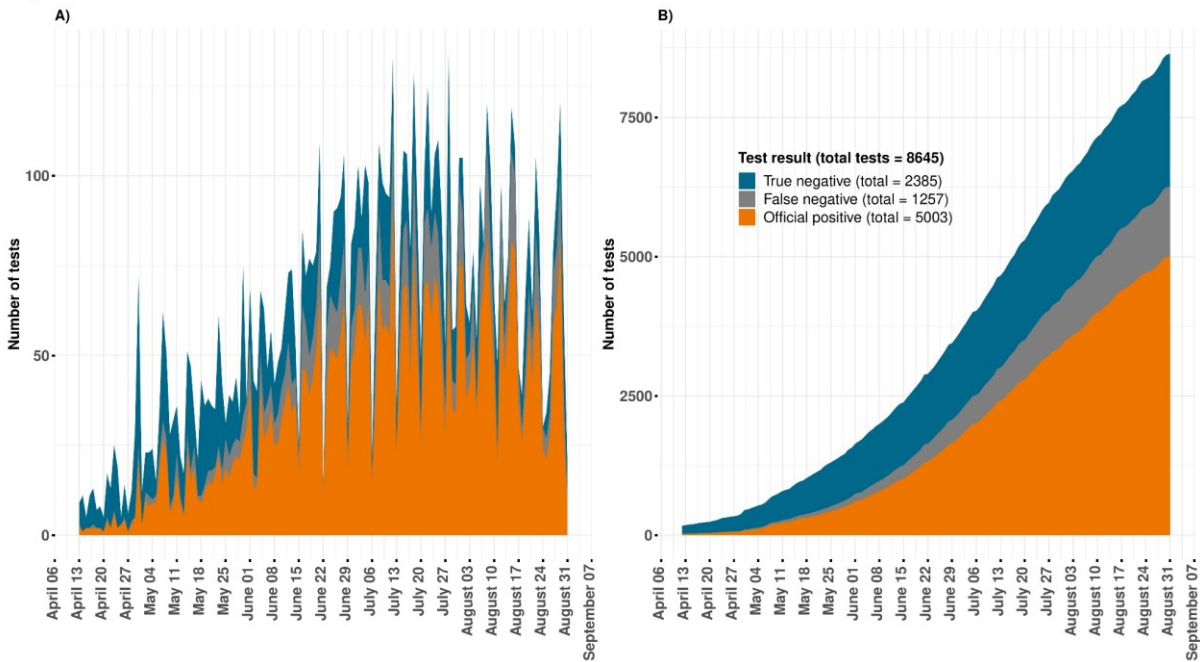
**Table SE. Official and estimated COVID-19 cases by date of reporting in NAYARIT**

Variable	Official count	Average test estimates	Best test estimates	Worst test estimates
N	8645	8645	8645	8645
Positive tests	5003 (57.9%)	6260 (72.4%)	5564 (64.4%)	7621 (88.2%)
Negative tests	3642 (42.1%)	2385 (27.6%)	3081 (35.6%)	1024 (11.8%)
Estimated false negative tests	-	1257 (14.5%)	561 (6.5%)	2618 (30.3%)
Overall ICU count	163	171	163	190
Overall Death count	118	163	132	215

128

129

**Figure SE. NAYARIT**



Study period February 27 – August 31 (shown from April 13). A) represents daily counts, while B) represents accumulated cases.

130

131

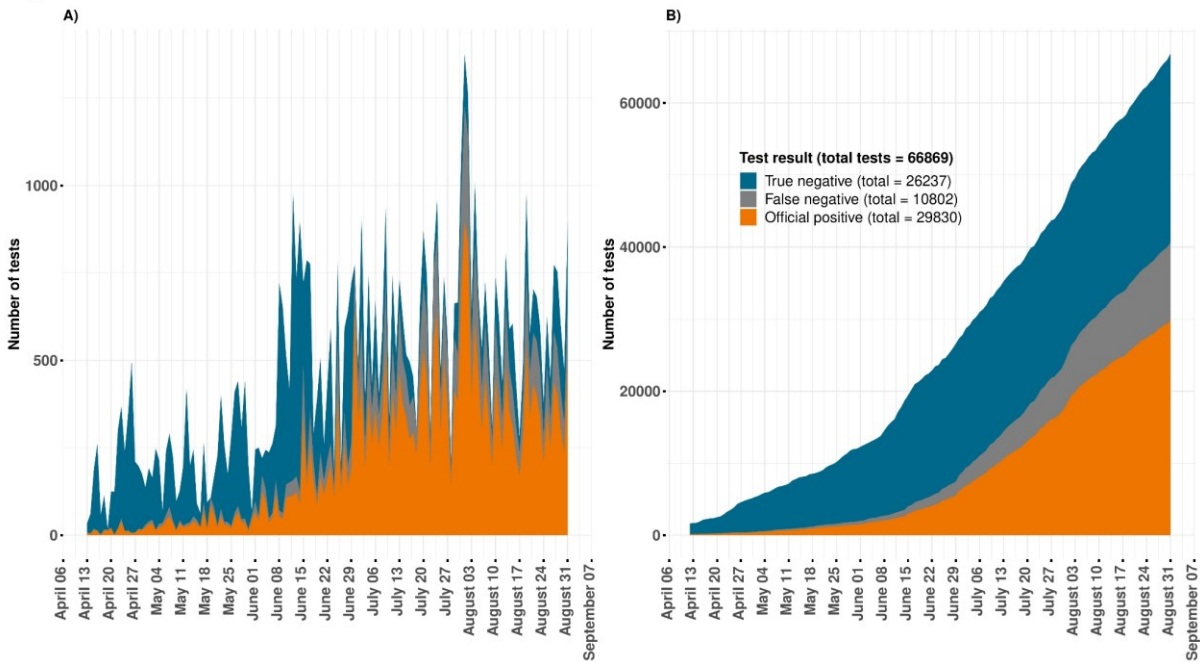
**Table SE. Official and estimated COVID-19 cases by date of reporting in NUEVO LEÓN**

Variable	Official count	Average test estimates	Best test estimates	Worst test estimates
N	66 869	66 869	66 869	66 869
Positive tests	29 830 (44.6%)	40 632 (60.8%)	35 328 (52.8%)	52 169 (78%)
Negative tests	37 039 (55.4%)	26 237 (39.2%)	31 541 (47.2%)	14 700 (22%)
Estimated false negative tests	-	10 802 (16.2%)	5498 (8.2%)	22 339 (33.4%)
Overall ICU count	671	796	731	931
Overall Death count	160	240	196	329

132

133

**Figure SE. NUEVO LEÓN**



Study period February 27 – August 31 (shown from April 13). A) represents daily counts, while B) represents accumulated cases.

134

135

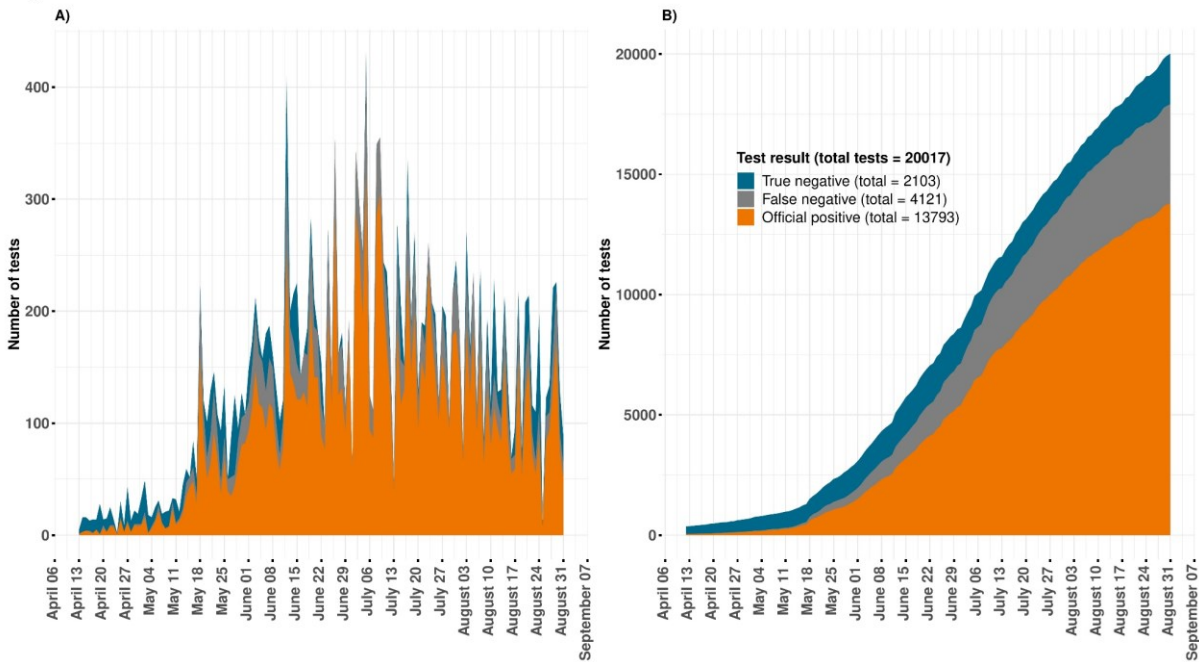
**Table SE. Official and estimated COVID-19 cases by date of reporting in OAXACA**

Variable	Official count	Average test estimates	Best test estimates	Worst test estimates
N	20 017	20 017	20 017	20 017
Positive tests	13 793 (68.9%)	17 914 (89.5%)	15 749 (78.7%)	20 017 (100%)
Negative tests	6224 (31.1%)	2103 (10.5%)	4268 (21.3%)	0 (0%)
Estimated false negative tests	-	4121 (20.6%)	1956 (9.8%)	6224 (31.1%)
Overall ICU count	269	339	297	409
Overall Death count	434	821	619	1234

136

137

**Figure SE. OAXACA**



Study period February 27 – August 31 (shown from April 13). A) represents daily counts, while B) represents accumulated cases.

138

139

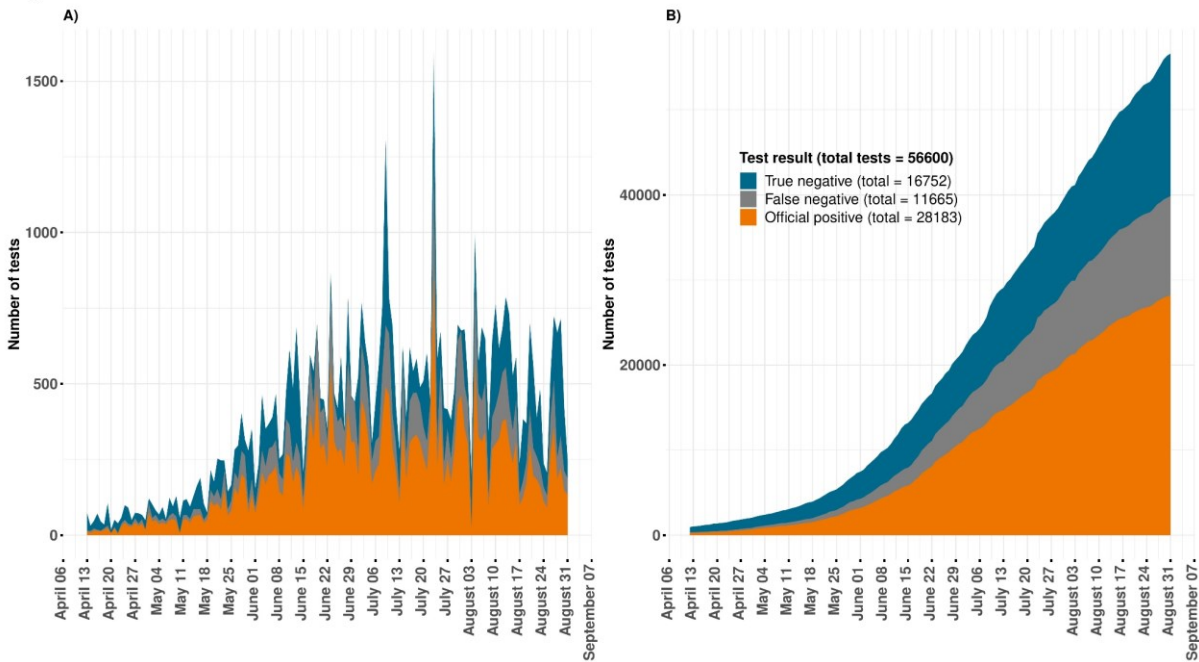
**Table SE. Official and estimated COVID-19 cases by date of reporting in PUEBLA**

Variable	Official count	Average test estimates	Best test estimates	Worst test estimates
N	56 600	56 600	56 600	56 600
Positive tests	28 183 (49.8%)	39 848 (70.4%)	34 192 (60.4%)	51 630 (91.2%)
Negative tests	28 417 (50.2%)	16 752 (29.6%)	22 408 (39.6%)	4970 (8.8%)
Estimated false negative tests	-	11 665 (20.6%)	6009 (10.6%)	23 447 (41.4%)
Overall ICU count	448	506	473	583
Overall Death count	840	1277	1062	1714

140

141

**Figure SE. PUEBLA**



Study period February 27 – August 31 (shown from April 13). A) represents daily counts, while B) represents accumulated cases.

142

143



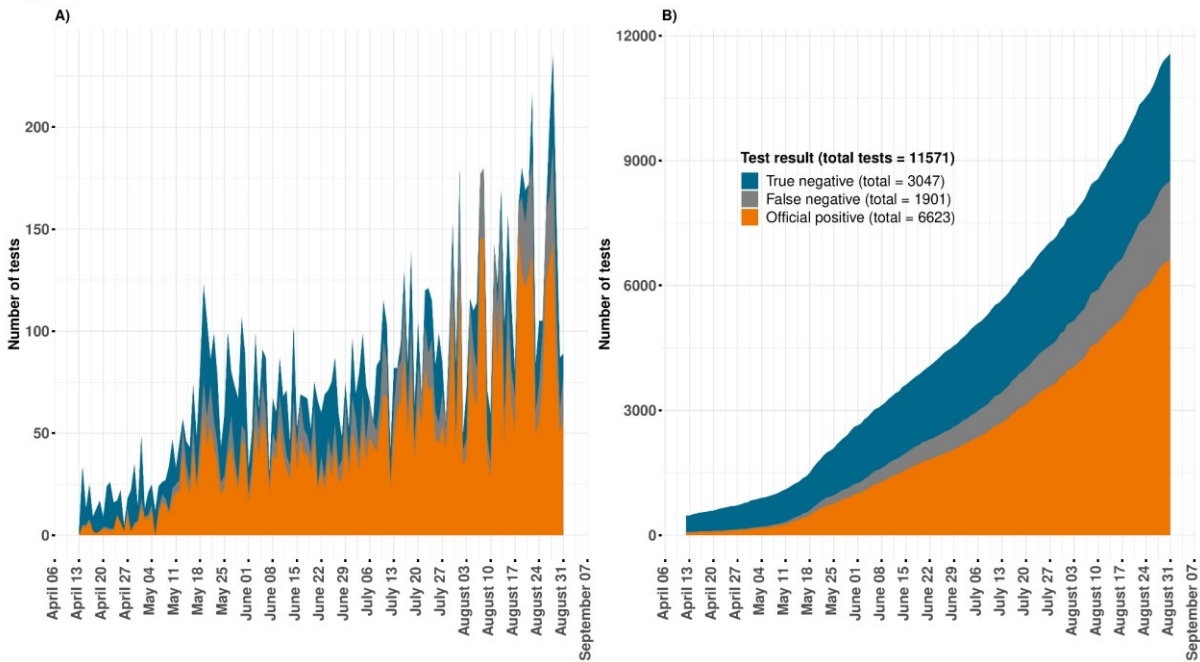
**Table SE. Official and estimated COVID-19 cases by date of reporting in QUERÉTARO**

Variable	Official count	Average test estimates	Best test estimates	Worst test estimates
N	11 571	11 571	11 571	11 571
Positive tests	6623 (57.2%)	8524 (73.7%)	7362 (63.6%)	10 865 (93.9%)
Negative tests	4948 (42.8%)	3047 (26.3%)	4209 (36.4%)	706 (6.1%)
Estimated false negative tests	-	1901 (16.4%)	739 (6.4%)	4242 (36.7%)
Overall ICU count	91	112	94	153
Overall Death count	67	92	70	133

144

145

**Figure SE. QUERÉTARO**



Study period February 27 – August 31 (shown from April 13). A) represents daily counts, while B) represents accumulated cases.

146

147



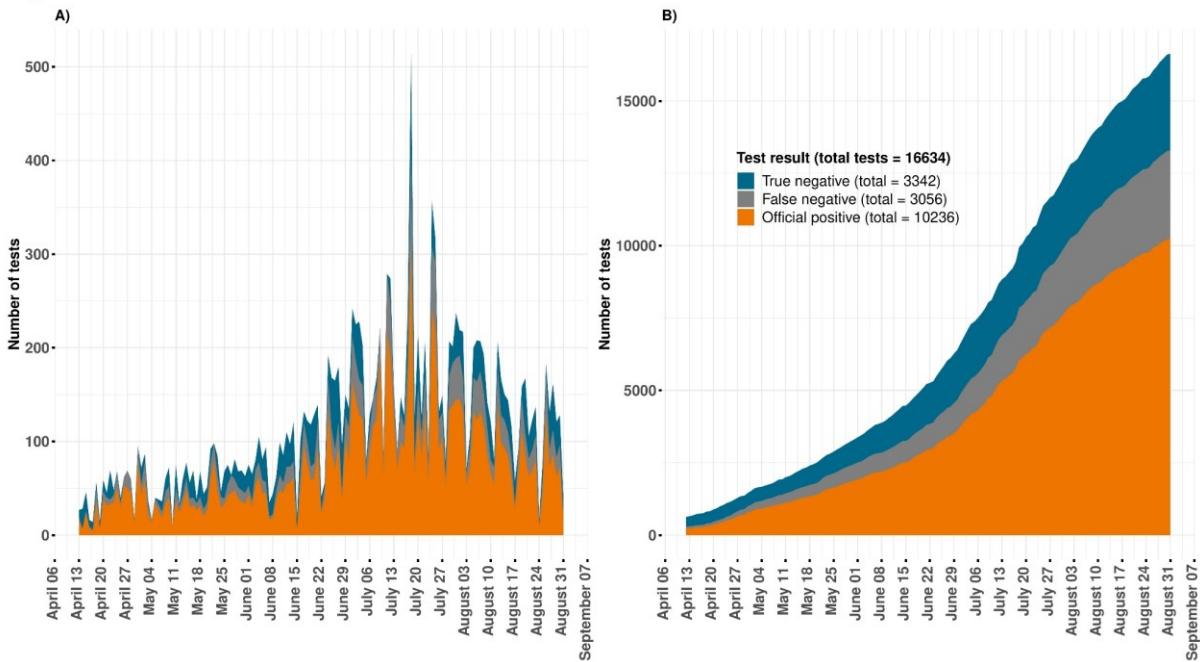
**Table SE. Official and estimated COVID-19 cases by date of reporting in QUINTANA ROO**

Variable	Official count	Average test estimates	Best test estimates	Worst test estimates
N	16 634	16 634	16 634	16 634
Positive tests	10 236 (61.5%)	13 292 (79.9%)	11 708 (70.4%)	16 328 (98.2%)
Negative tests	6398 (38.5%)	3342 (20.1%)	4926 (29.6%)	306 (1.8%)
Estimated false negative tests	-	3056 (18.4%)	1472 (8.8%)	6092 (36.6%)
Overall ICU count	223	255	230	305
Overall Death count	256	397	315	560

148

149

**Figure SE. QUINTANA ROO**



Study period February 27 – August 31 (shown from April 13). A) represents daily counts, while B) represents accumulated cases.

150

151

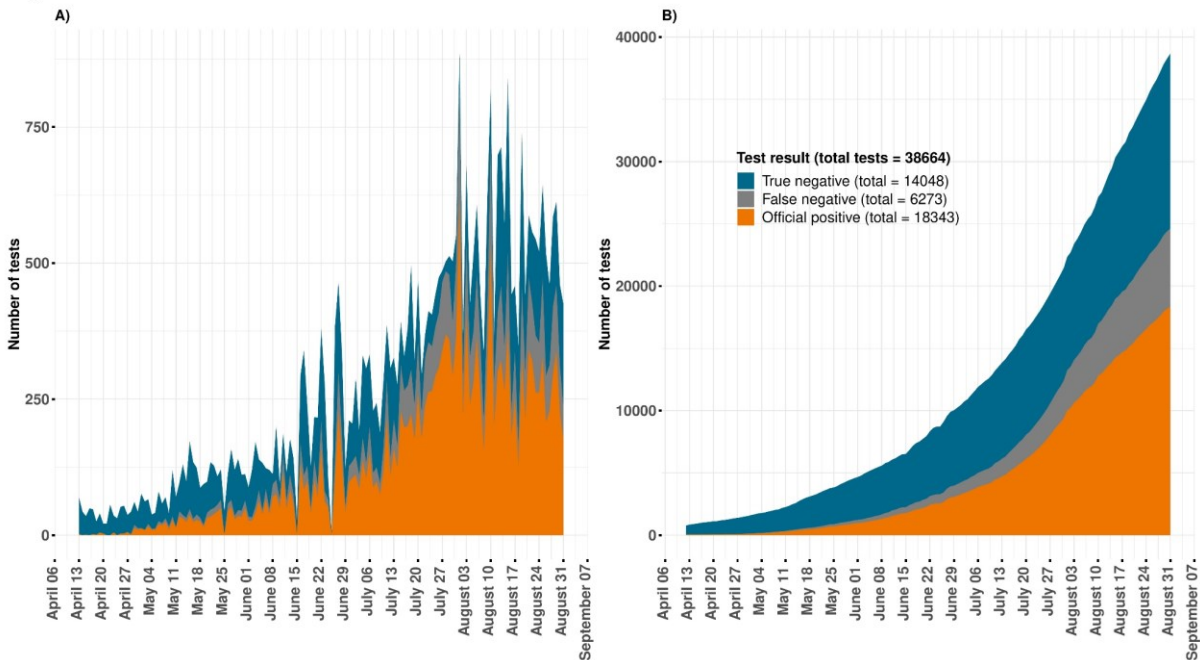
**Table SE. Official and estimated COVID-19 cases by date of reporting in SAN LUIS POTOSÍ**

Variable	Official count	Average test estimates	Best test estimates	Worst test estimates
N	38 664	38 664	38 664	38 664
Positive tests	18 343 (47.4%)	24 616 (63.7%)	21 532 (55.7%)	30 699 (79.4%)
Negative tests	20 321 (52.6%)	14 048 (36.3%)	17 132 (44.3%)	7965 (20.6%)
Estimated false negative tests	-	6273 (16.2%)	3189 (8.2%)	12 356 (32%)
Overall ICU count	151	180	159	223
Overall Death count	336	472	403	596

152

153

**Figure SE. SAN LUIS POTOSÍ**



Study period February 27 – August 31 (shown from April 13). A) represents daily counts, while B) represents accumulated cases.

154

155

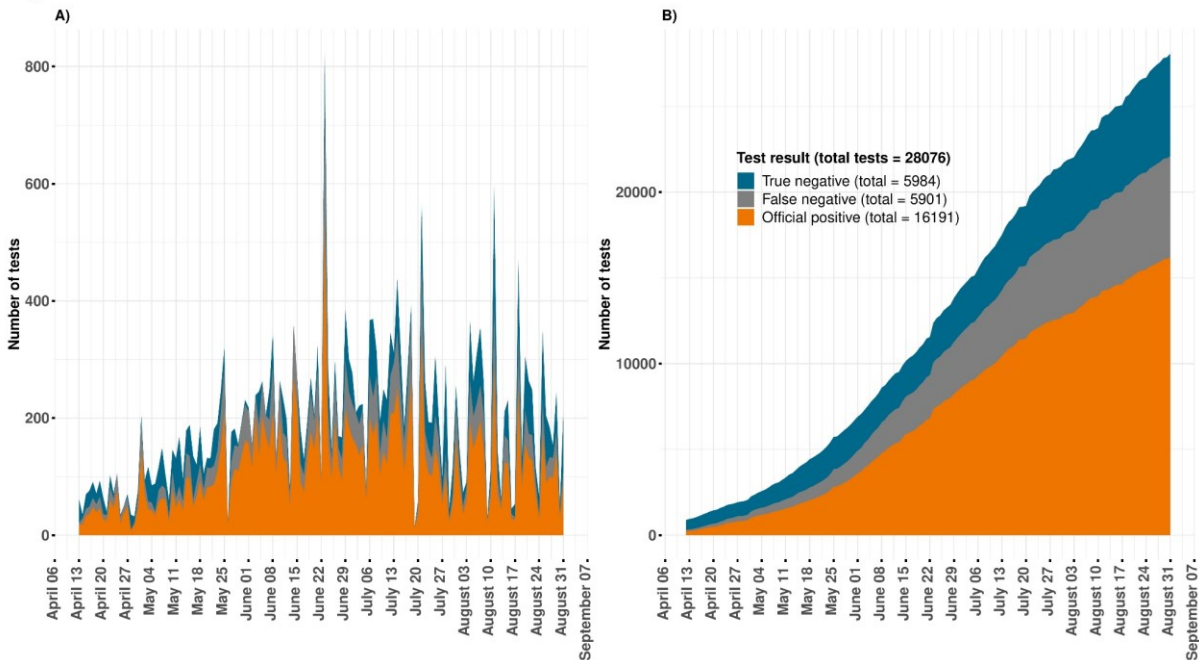
**Table SE. Official and estimated COVID-19 cases by date of reporting in SINALOA**

Variable	Official count	Average test estimates	Best test estimates	Worst test estimates
N	28 076	28 076	28 076	28 076
Positive tests	16 191 (57.7%)	22 092 (78.7%)	19 179 (68.3%)	27 795 (99%)
Negative tests	11 885 (42.3%)	5984 (21.3%)	8897 (31.7%)	281 (1%)
Estimated false negative tests	-	5901 (21%)	2988 (10.6%)	11 604 (41.3%)
Overall ICU count	597	704	643	804
Overall Death count	930	1626	1271	2293

156

157

**Figure SE. SINALOA**



Study period February 27 – August 31 (shown from April 13). A) represents daily counts, while B) represents accumulated cases.

158

159

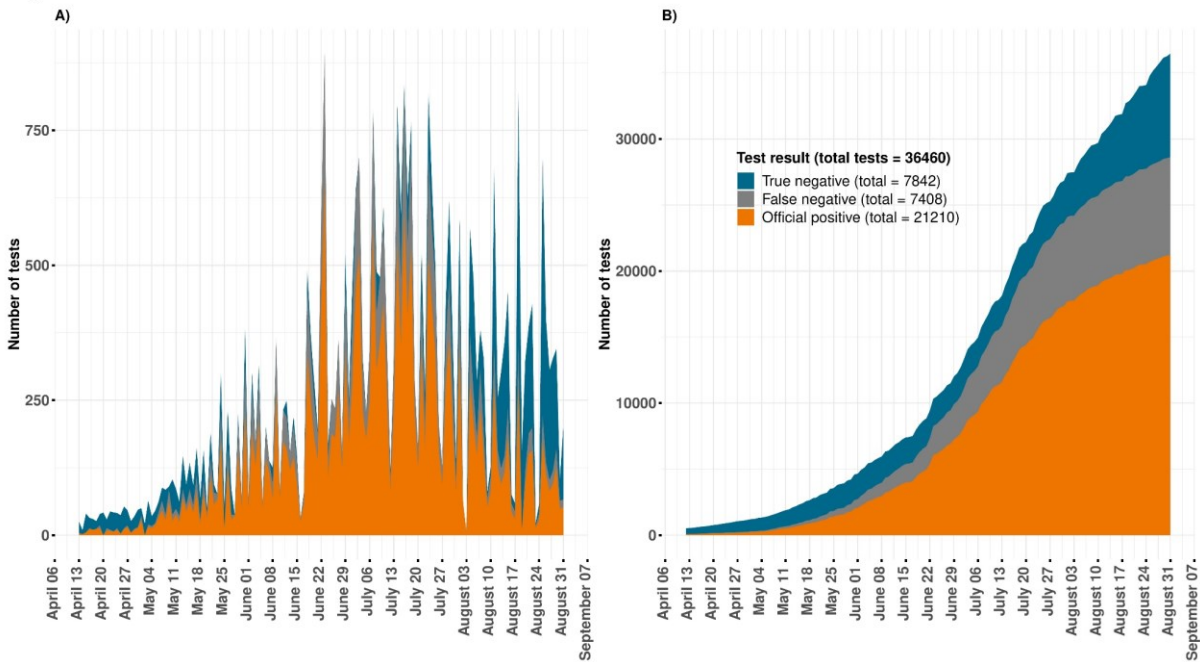
**Table SE. Official and estimated COVID-19 cases by date of reporting in SONORA**

Variable	Official count	Average test estimates	Best test estimates	Worst test estimates
N	36 460	36 460	36 460	36 460
Positive tests	21 210 (58.2%)	28 618 (78.5%)	24 925 (68.4%)	35 917 (98.5%)
Negative tests	15 250 (41.8%)	7842 (21.5%)	11 535 (31.6%)	543 (1.5%)
Estimated false negative tests	-	7408 (20.3%)	3715 (10.2%)	14 707 (40.3%)
Overall ICU count	145	180	161	221
Overall Death count	884	1597	1234	2314

160

161

**Figure SE. SONORA**



Study period February 27 – August 31 (shown from April 13). A) represents daily counts, while B) represents accumulated cases.

162

163

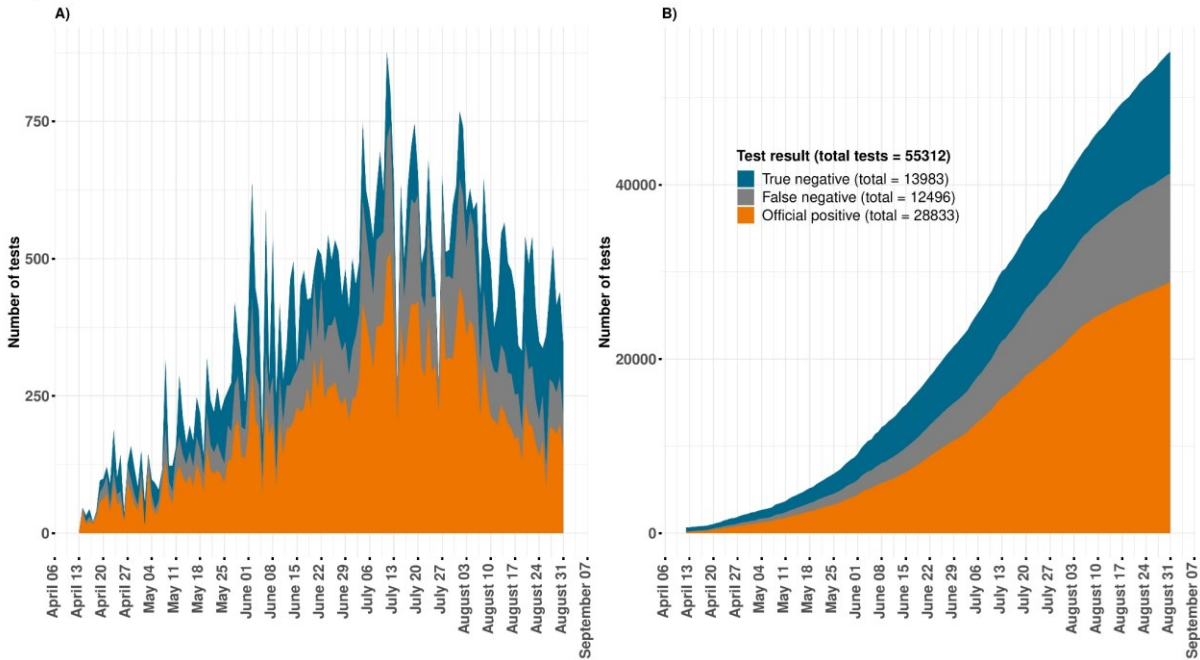
**Table SE. Official and estimated COVID-19 cases by date of reporting in TABASCO**

Variable	Official count	Average test estimates	Best test estimates	Worst test estimates
N	55 312	55 312	55 312	55 312
Positive tests	28 833 (52.1%)	41 329 (74.7%)	35 799 (64.7%)	52 230 (94.4%)
Negative tests	26 479 (47.9%)	13 983 (25.3%)	19 513 (35.3%)	3082 (5.6%)
Estimated false negative tests	-	12 496 (22.6%)	6966 (12.6%)	23 397 (42.3%)
Overall ICU count	238	271	252	310
Overall Death count	568	878	730	1155

164

165

**Figure SE. TABASCO**



Study period February 27 – August 31 (shown from April 13). A) represents daily counts, while B) represents accumulated cases.

166

167

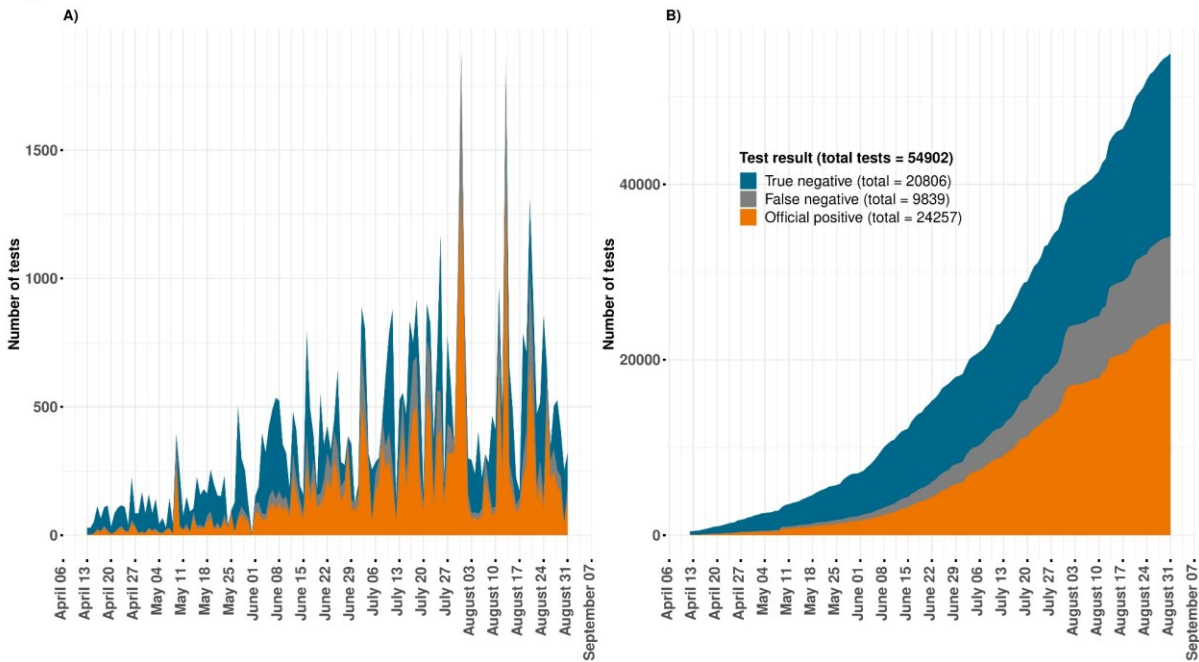
**Table SE. Official and estimated COVID-19 cases by date of reporting in TAMAULIPAS**

Variable	Official count	Average test estimates	Best test estimates	Worst test estimates
N	54 902	54 902	54 902	54 902
Positive tests	24 257 (44.2%)	34 096 (62.1%)	28 952 (52.7%)	45 679 (83.2%)
Negative tests	30 645 (55.8%)	20 806 (37.9%)	25 950 (47.3%)	9223 (16.8%)
Estimated false negative tests	-	9839 (17.9%)	4695 (8.6%)	21 422 (39%)
Overall ICU count	129	174	149	247
Overall Death count	510	806	649	1132

168

169

**Figure SE. TAMAULIPAS**



Study period February 27 – August 31 (shown from April 13). A) represents daily counts, while B) represents accumulated cases.

170

171

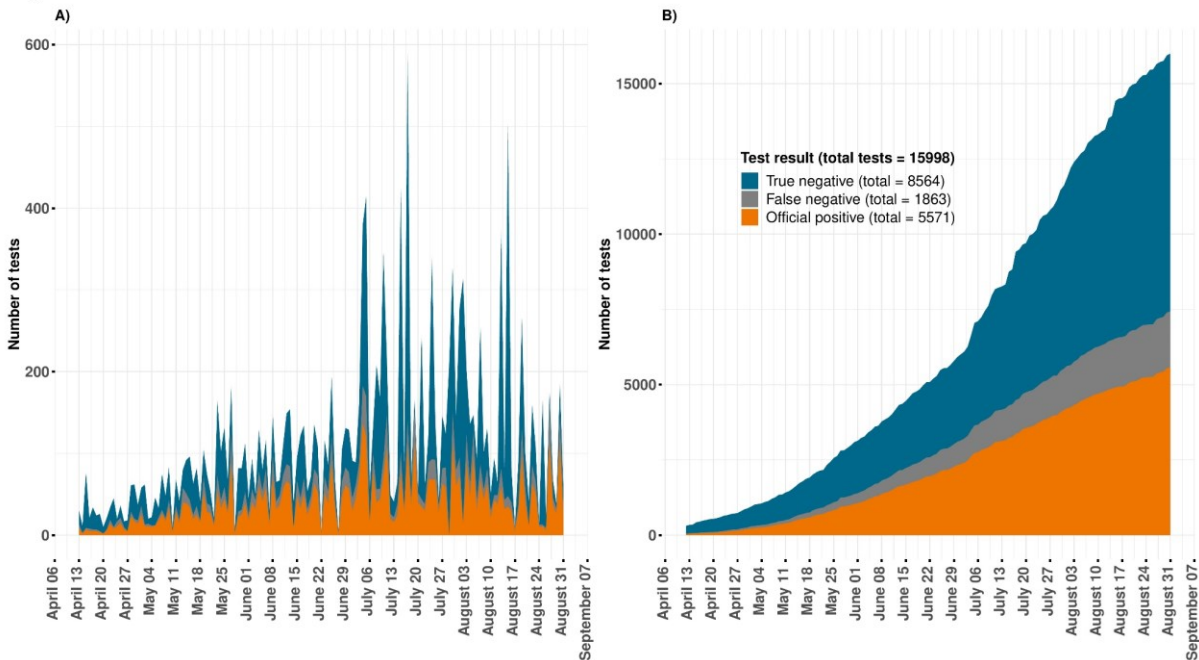
**Table SE. Official and estimated COVID-19 cases by date of reporting in TLAXCALA**

Variable	Official count	Average test estimates	Best test estimates	Worst test estimates
N	15 998	15 998	15 998	15 998
Positive tests	5571 (34.8%)	7434 (46.5%)	6396 (40%)	9485 (59.3%)
Negative tests	10 427 (65.2%)	8564 (53.5%)	9602 (60%)	6513 (40.7%)
Estimated false negative tests	-	1863 (11.6%)	825 (5.2%)	3914 (24.5%)
Overall ICU count	441	512	466	599
Overall Death count	118	140	123	180

172

173

**Figure SE. TLAXCALA**



Study period February 27 – August 31 (shown from April 13). A) represents daily counts, while B) represents accumulated cases.

174

175



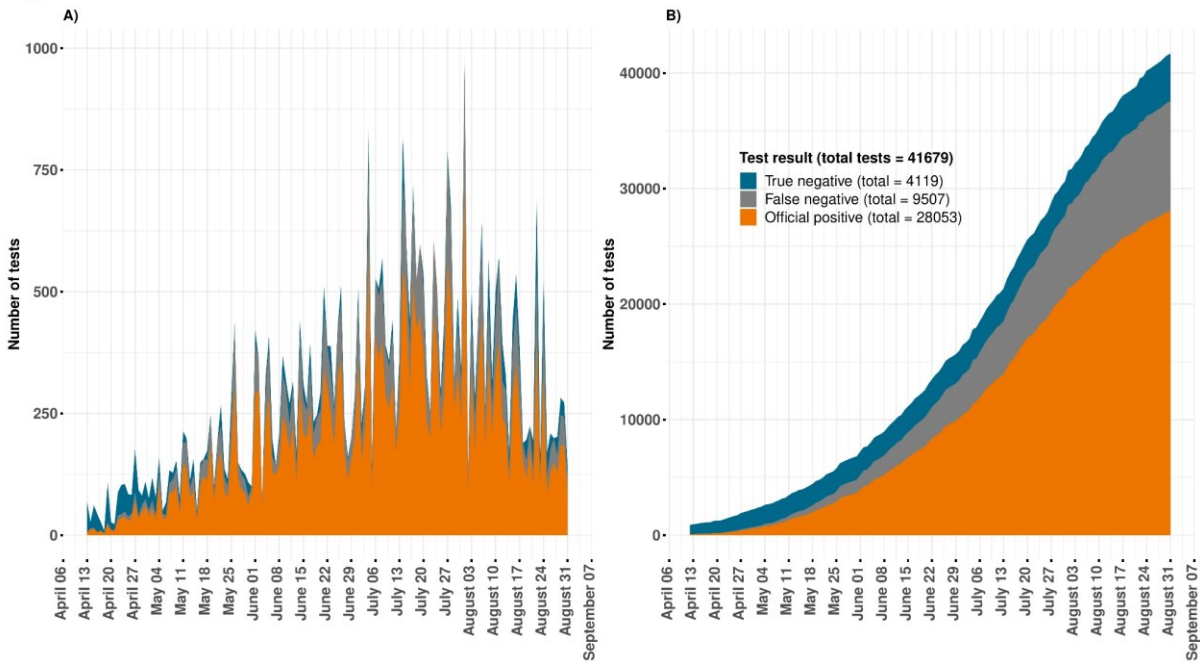
**Table SE. Official and estimated COVID-19 cases by date of reporting in VERACRUZ**

Variable	Official count	Average test estimates	Best test estimates	Worst test estimates
N	41 679	41 679	41 679	41 679
Positive tests	28 053 (67.3%)	37 560 (90.1%)	32 986 (79.1%)	41 679 (100%)
Negative tests	13 626 (32.7%)	4119 (9.9%)	8693 (20.9%)	0 (0%)
Estimated false negative tests	-	9507 (22.8%)	4933 (11.8%)	13 626 (32.7%)
Overall ICU count	616	745	668	862
Overall Death count	915	1669	1293	2396

176

177

**Figure SE. VERACRUZ**



Study period February 27 – August 31 (shown from April 13). A) represents daily counts, while B) represents accumulated cases.

178

179



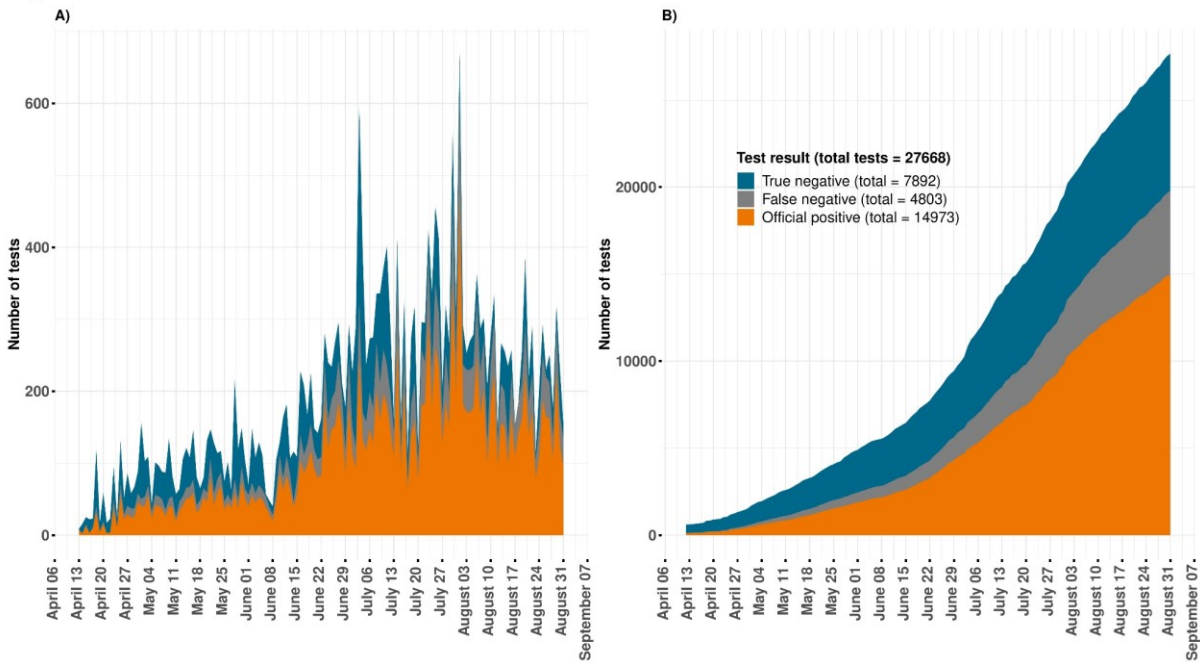
**Table SE. Official and estimated COVID-19 cases by date of reporting in YUCATÁN**

Variable	Official count	Average test estimates	Best test estimates	Worst test estimates
N	27 668	27 668	27 668	27 668
Positive tests	14 973 (54.1%)	19 776 (71.5%)	17 272 (62.4%)	24 996 (90.3%)
Negative tests	12 695 (45.9%)	7892 (28.5%)	10 396 (37.6%)	2672 (9.7%)
Estimated false negative tests	-	4803 (17.4%)	2299 (8.3%)	10 023 (36.2%)
Overall ICU count	159	180	162	208
Overall Death count	206	291	246	396

180

181

**Figure SE. YUCATÁN**



182

183

Study period February 27 – August 31 (shown from April 13). A) represents daily counts, while B) represents accumulated cases.

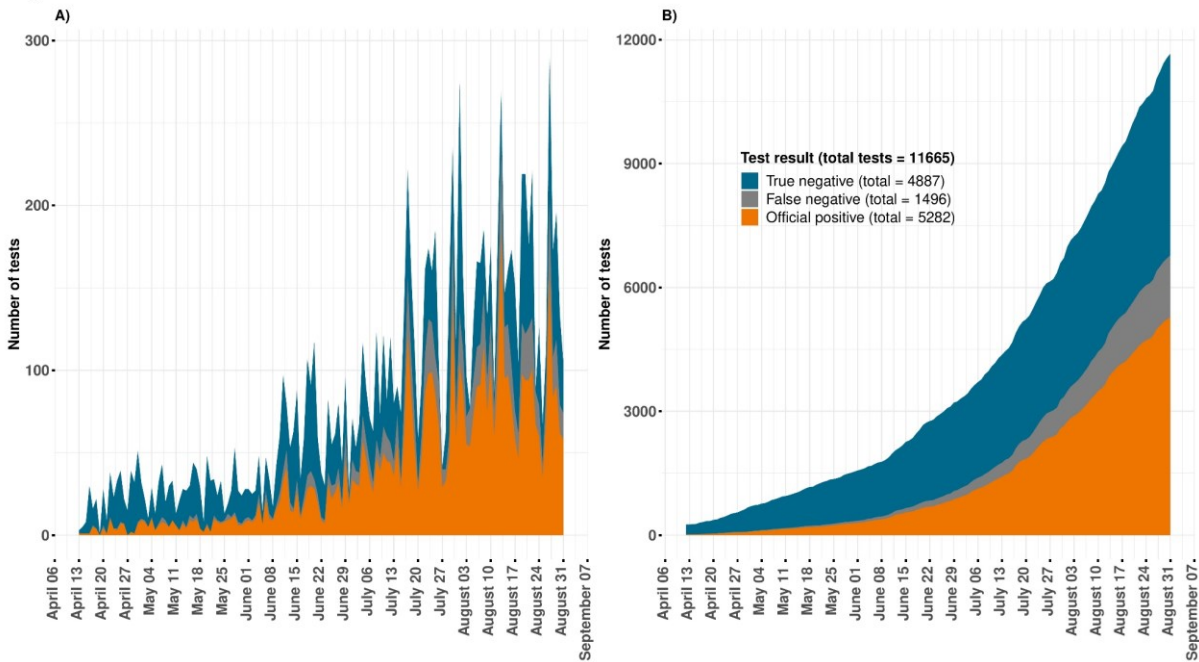
**Table SE. Official and estimated COVID-19 cases by date of reporting in ZACATECAS**

Variable	Official count	Average test estimates	Best test estimates	Worst test estimates
N	11 665	11 665	11 665	11 665
Positive tests	5282 (45.3%)	6778 (58.1%)	5976 (51.2%)	8289 (71.1%)
Negative tests	6383 (54.7%)	4887 (41.9%)	5689 (48.8%)	3376 (28.9%)
Estimated false negative tests	-	1496 (12.8%)	694 (5.9%)	3007 (25.8%)
Overall ICU count	183	194	184	223
Overall Death count	75	87	77	118

184

185

**Figure SE. ZACATECAS**



Study period February 27 – August 31 (shown from April 13). A) represents daily counts, while B) represents accumulated cases.

186

187

188