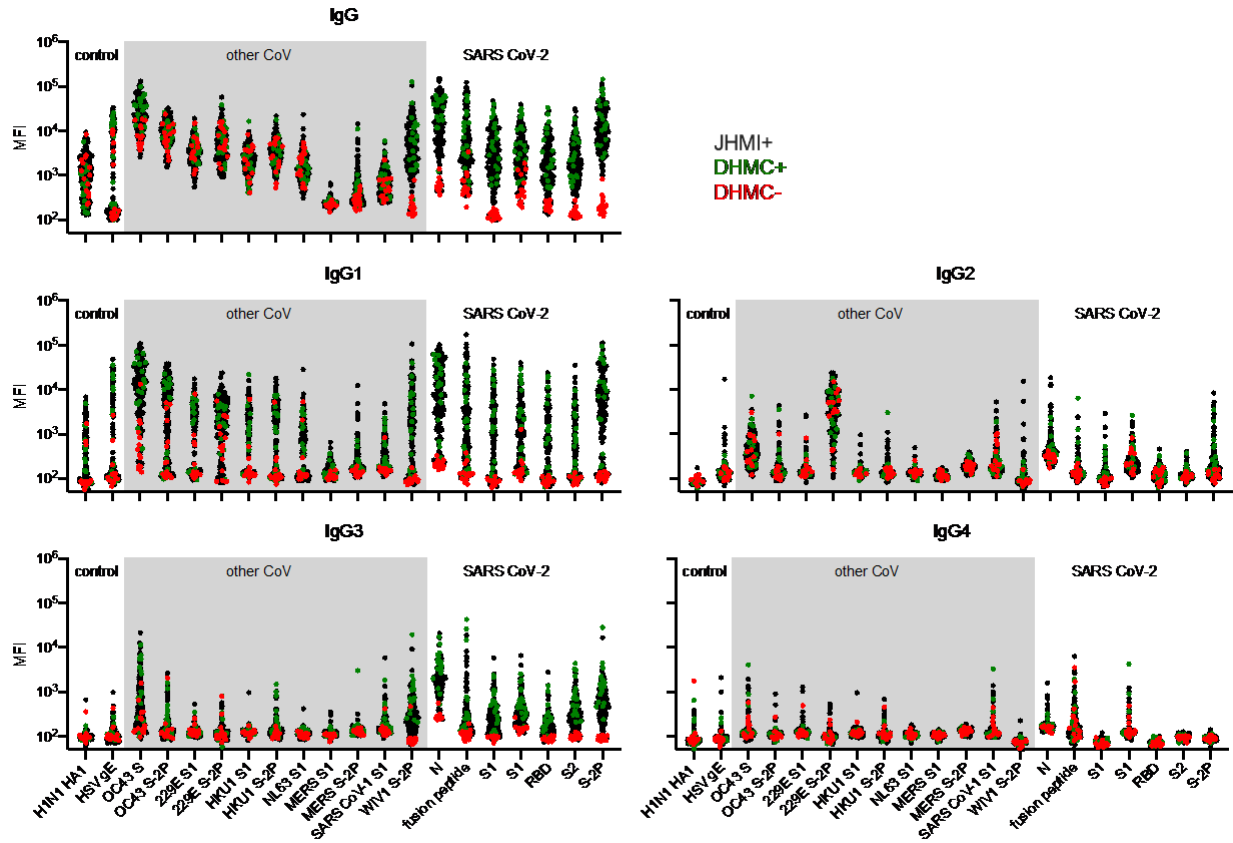
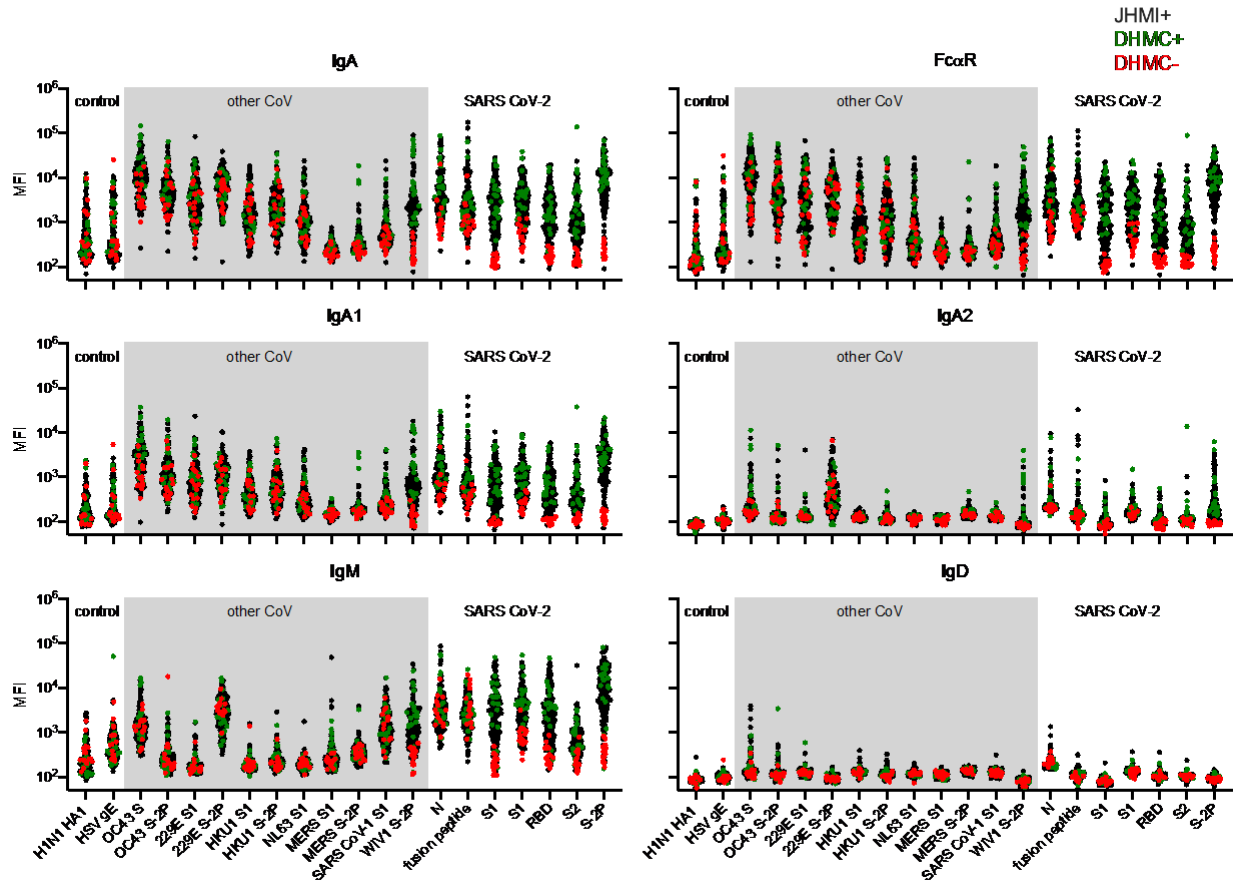


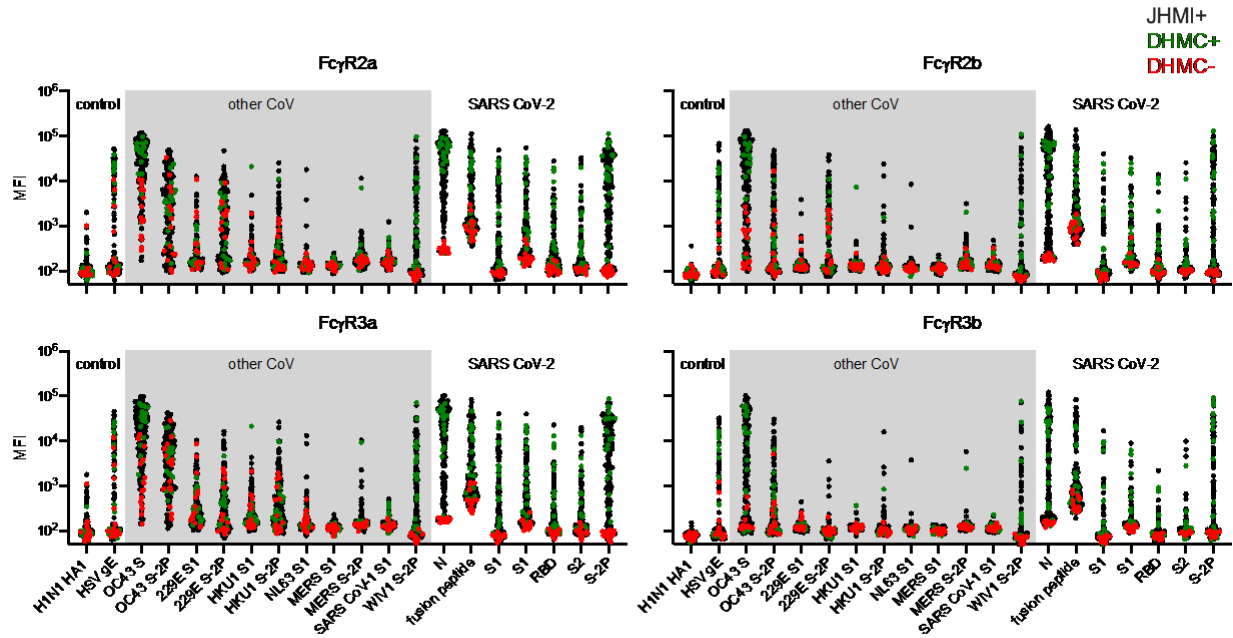
Supplementary Figures	
Supplementary Figure 1	Plasma and serum IgG isotype and subclass responses across CoV and control antigen types.
Supplementary Figure 2	Plasma and serum IgA, D, and M isotype and subclass responses across CoV and control antigen types.
Supplementary Figure 3	Plasma and serum Fc γ R binding responses across antibodies specific to CoV and control antigen types.
Supplementary Figure 4	Correlative relationships between antibodies specific to SARS CoV-2 and endemic CoV.
Supplementary Figure 5	Antibody features associated with clinical status
Supplementary Tables	
Supplementary Table 1	Demographic data for convalescent plasma (JHMI) and convalescent serum (DHMC)
Supplementary Table 2	Fc Array Reagents
Supplementary Table 3	Sample Dilutions in the Fc Array Assay



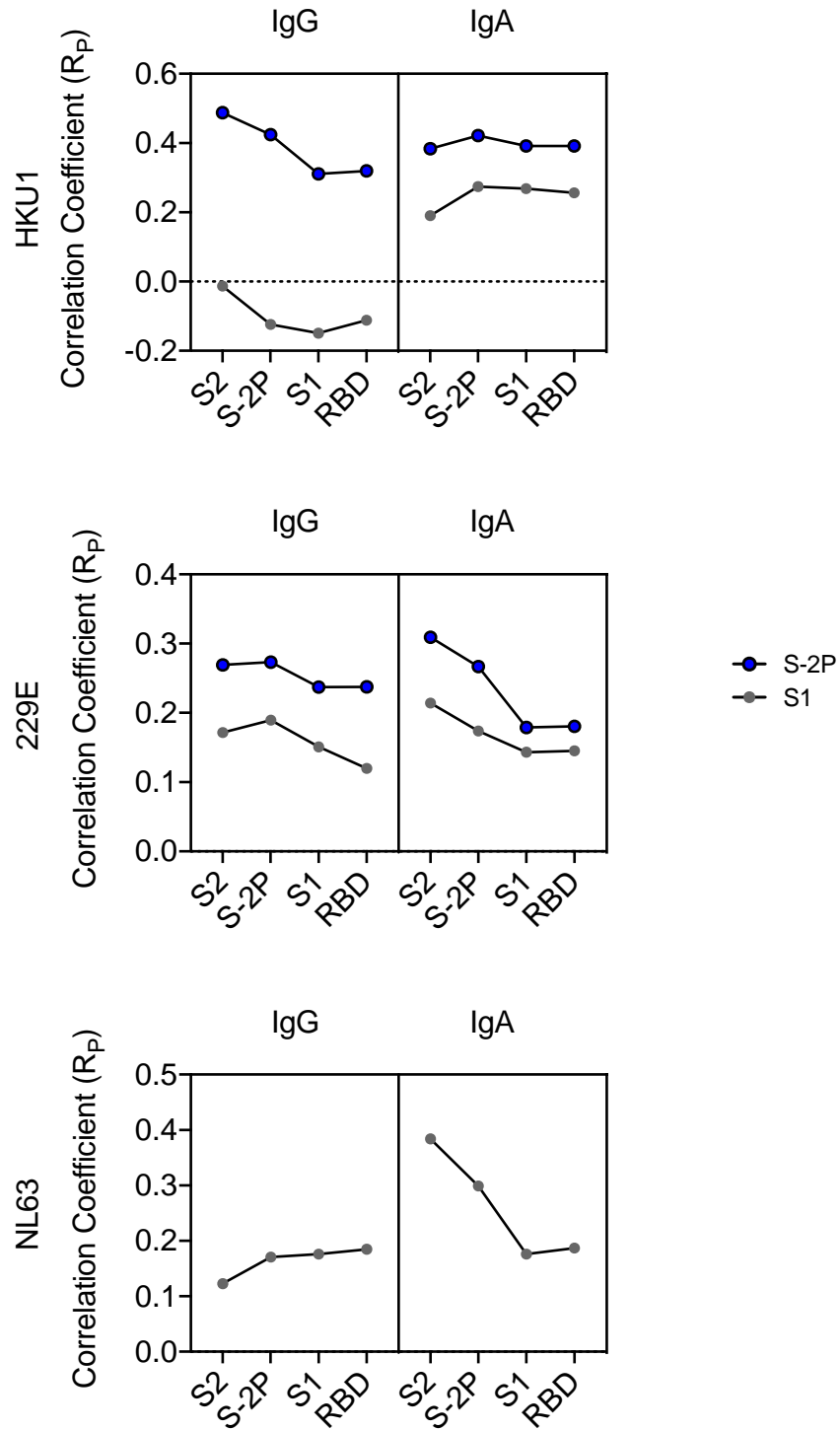
Supplementary Figure 1. Plasma (JHMI) and serum (DHMC) IgG isotype and subclass responses across CoV and control antigens. Samples from convalescent (+) donors are indicated in black and green, and those from SARS-CoV-2 naive (-) subjects in red.



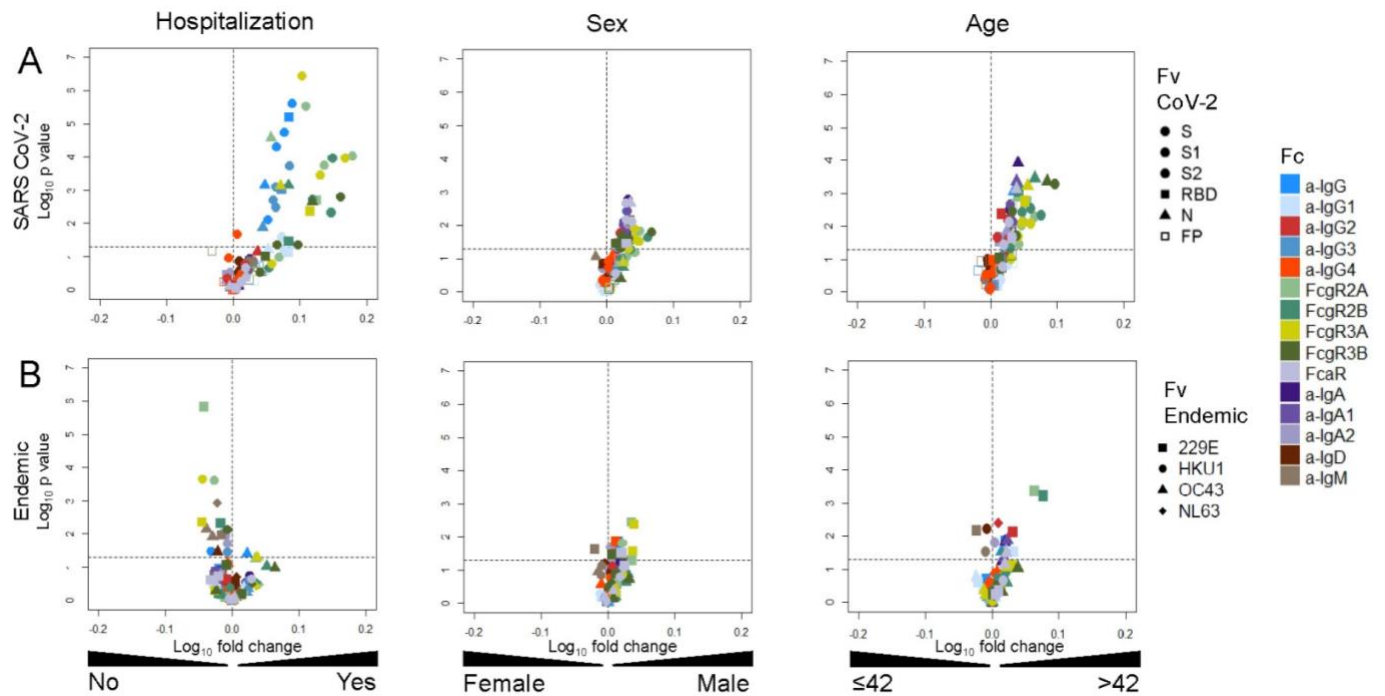
Supplementary Figure 2. Plasma (JHMI) and serum (DHMC) IgA, D, and M isotype and subclass responses across CoV and control antigens. Samples from convalescent (+) donors are indicated in black and green, and those from SARS-CoV-2 naïve (-) subjects in red.



Supplementary Figure 3. Plasma (JHMI) and serum (DHMC) Fc γ R binding responses across antibodies specific to CoV and control antigens. Samples from convalescent (+) donors are indicated in black and green, and those from SARS-CoV-2 naïve (-) subjects in red.



Supplemental Figure 4. Correlative relationships between antibodies specific to SARS-CoV-2 and endemic CoV. Pearson correlation coefficients (R_p) between SARS-CoV-2 specific IgG and IgA responses and IgG and IgA responses to endemic CoV S-2P (blue) and S₁ (gray) proteins for HKU1 (top), 229E (center), and NL63 (bottom).



Supplemental Figure 5. Antibody features associated with clinical status. A-B. Volcano plots of significance and fold-change of response medians for antibody responses to SARS-CoV-2 (A) and endemic CoV (B) antigens according to hospitalization status (left), sex (center), and age above or below the cohort median (right). Symbol shapes indicate Fv specificity and color indicates Fc characteristic.

Supplementary Table 1: Demographic information on convalescent plasma (JHMI) and convalescent plasma samples (DHMC).

Characteristic	JHMI Convalescent n=126	DHMC Convalescent n=20	DHMC Naive n=15
Median age (IQR), years	42 (29-53)	54 (45-62)	34 (28-52)
Sex			
Female	58 (46%)	10 (50%)	8 (53.3%)
Male	68 (54%)	10 (50%)	7 (46.7%)
Hospitalized (severity)			
No	114 (90.5%)	16 (80%)	NA
Yes	11 (8.7%)	4 (20%)	NA
Unknown	1 (0.8%)		
Median days since PCR+ or symptom onset (IQR)	43 (38-48)	38 (33-45)	NA

Supplementary Table 2: Antigen and Fc Detection Reagents

Antigen	Source	Fc Detection	Source
H1N1 HA1	Immune Technology IT-003-00110p	a- IgG	Southern Biotech 1030-09
HSV gE	Immune Technology IT-005-005p	a-IgG1	Southern Biotech 9054-09
HCoV OC43 S	Sino Biological 40607-V08B	a-IgG2	Southern Biotech 9070-09
OC43 S-2P	Expressed in HEK 293F	a-IgG3	Southern Biotech 9210-09
229E S1	Sino Biological 40605-V08H	a-IgG4	Southern Biotech 9200-09
229E S-2P	Expressed in Expi 293	a-IgA	Southern Biotech 2050-09
HKU1 S1	Sino Biological 40606-V08H	a-IgA1	Southern Biotech 9130-09
HKU S-2P	Expressed in Expi 293	a-IgA2	Southern Biotech 9140-09
NL63 S1	Sino Biological 40604-V08H	a-IgM	Southern Biotech 9020-09
MERS S1	Sino Biological 40069-V08H-50	a-IgD	Southern Biotech 9030-09
MERS S-2P	Expressed in Expi 293	Fc α R	Duke Protein Production Facility
SARS CoV-1 S1	Sino Biological 40150-V08B1	Fc γ R2a	Boesch, et. al, 2014 ₁
WIV1 S-2P	Expressed in Expi 293	Fc γ R2b	Boesch, et. al, 2014 ₁
SARS CoV-2 N	Immune Technology IT-002-033Ep	Fc γ R3a	Boesch, et. al, 2014 ₁
SARS CoV-2 fusion peptide	New England Peptide	Fc γ R3b	Boesch, et. al, 2014 ₁
SARS CoV-2 S1 (for Fc Array)	ACROBiosystems S1N-C52H3-100ug		
SARS CoV-2 S1 (for ADCD)	Sino Biological 40150-V08B1-20		
SARS CoV-2 RBD	BEI Resources NR-52366		
SARS CoV-2 S2	Immune Technology IT-002-034p		
SARS CoV-2 S-2P	Expressed in Expi 293		

Supplementary Table 3. Sample Dilutions in the Fc Array Assay

Sample Type	Dilution	Detection Reagent
Serum and Plasma	1:5000	anti-human IgG, Fc γ R2A, Fc γ R2B, Fc γ R3A, Fc γ R3B
Serum and Plasma	1:1000	anti-human IgG1
Serum and Plasma	1:250	anti-human IgA, anti-human IgA1, anti-human IgA2, anti-human IgD, anti-human IgM, anti-human IgG2 anti-human IgG3, anti-human IgG4, Fc α R