

## **List of Supplementary Files**

**Table S1. PRISMA checklist**

**Table S2. Search strategy for peer-reviewed databases**

**Table S3. The characteristics of included studies comparing severe and non-severe COVID-19 patients**

**Table S4. The characteristics of included studies comparing survivors and non-survivors of COVID-19**

**Table S5. Risk of bias assessment of all included studies using the Newcastle-Ottawa Scale (NOS)**

**Figure S1. Meta-analysis restricted to only peer-reviewed studies comparing the NLR value on admission in severe vs. non-severe COVID-19 patients**

**Figure S2. Meta-analysis restricted to studies with low risk of bias score comparing the NLR value on admission in severe vs. non-severe COVID-19 patients**

**Figure S3. Bubble plot for meta-regression in studies with severity outcome**

**Figure S4. Meta-analysis restricted to only peer-reviewed studies comparing the NLR value on admission in survivors vs. non-survivors of COVID-19**

**Figure S5. Meta-analysis restricted to studies with low risk of bias score comparing the NLR value on admission in survivors vs. non-survivors of COVID-19**

**Figure S6. Bubble plot for meta-regression in studies with mortality outcome**

**Table S1. PRISMA checklist.**

| Section/topic                      | #  | Checklist item  | Reported on page #    |
|------------------------------------|----|---|-----------------------|
| <b>TITLE</b>                       |    |   |                       |
| Title                              | 1  | Identify the report as a systematic review, meta-analysis, or both.   | 1                     |
| <b>ABSTRACT</b>                    |    |   |                       |
| Structured summary                 | 2  | Provide a structured summary including, as applicable: background; objectives; data sources; study eligibility criteria, participants, and interventions; study appraisal and synthesis methods; results; limitations; conclusions and implications of key findings; systematic review registration number. | 2                     |
| <b>INTRODUCTION</b>                |    |   |                       |
| Rationale                          | 3  | Describe the rationale for the review in the context of what is already known.  | 3                     |
| Objectives                         | 4  | Provide an explicit statement of questions being addressed with reference to participants, interventions, comparisons, outcomes, and study design (PICOS).  | 3                     |
| <b>METHODS</b>                     |    |   |                       |
| Protocol and registration          | 5  | Indicate if a review protocol exists, if and where it can be accessed (e.g., Web address), and, if available, provide registration information including registration number.   | 4                     |
| Eligibility criteria               | 6  | Specify study characteristics (e.g., PICOS, length of follow-up) and report characteristics (e.g., years considered, language, publication status) used as criteria for eligibility, giving rationale.  | 4                     |
| Information sources                | 7  | Describe all information sources (e.g., databases with dates of coverage, contact with study authors to identify additional studies) in the search and date last searched.  | 4                     |
| Search                             | 8  | Present full electronic search strategy for at least one database, including any limits used, such that it could be repeated.   | 4, Supplementary file |
| Study selection                    | 9  | State the process for selecting studies (i.e., screening, eligibility, included in systematic review, and, if applicable, included in the meta-analysis).   | 5                     |
| Data collection process            | 10 | Describe method of data extraction from reports (e.g., piloted forms, independently, in duplicate) and any processes for obtaining and confirming data from investigators.  | 5                     |
| Data items                         | 11 | List and define all variables for which data were sought (e.g., PICOS, funding sources) and any assumptions and simplifications made.   | 5, 6                  |
| Risk of bias in individual studies | 12 | Describe methods used for assessing risk of bias of individual studies (including specification of whether this was done at the study or outcome level), and how this information is to be used in any data synthesis.  | 5                     |
| Summary measures                   | 13 | State the principal summary measures (e.g., risk ratio, difference in means).   | 5, 6                  |
| Synthesis of results               | 14 | Describe the methods of handling data and combining results of studies, if done, including measures of consistency (e.g., $I^2$ ) for each meta-analysis.   | 6                     |

| Section/topic                 | #  | Checklist item   | Reported on page #                   |
|-------------------------------|----|--|--------------------------------------|
| Risk of bias across studies   | 15 | Specify any assessment of risk of bias that may affect the cumulative evidence (e.g., publication bias, selective reporting within studies).   | 6                                    |
| Additional analyses           | 16 | Describe methods of additional analyses (e.g., sensitivity or subgroup analyses, meta-regression), if done, indicating which were pre-specified.   | 6                                    |
| <b>RESULTS</b>                |    |  |                                      |
| Study selection               | 17 | Give numbers of studies screened, assessed for eligibility, and included in the review, with reasons for exclusions at each stage, ideally with a flow diagram.  | 7, 24                                |
| Study characteristics         | 18 | For each study, present characteristics for which data were extracted (e.g., study size, PICOS, follow-up period) and provide the citations.   | 7, 20-22, Supplementary files        |
| Risk of bias within studies   | 19 | Present data on risk of bias of each study and, if available, any outcome level assessment (see item 12).  | 7, 20-22, Supplementary files        |
| Results of individual studies | 20 | For all outcomes considered (benefits or harms), present, for each study: (a) simple summary data for each intervention group (b) effect estimates and confidence intervals, ideally with a forest plot. | 7-9, 20-23,                          |
| Synthesis of results          | 21 | Present results of each meta-analysis done, including confidence intervals and measures of consistency.  | 8-10, 23, 25-27, Supplementary files |
| Risk of bias across studies   | 22 | Present results of any assessment of risk of bias across studies (see Item 15).  | 8-9, 25, 27                          |
| Additional analysis           | 23 | Give results of additional analyses, if done (e.g., sensitivity or subgroup analyses, meta-regression [see Item 16]).  | 8, 9, 26, Supplementary files        |
| <b>DISCUSSION</b>             |    |  |                                      |
| Summary of evidence           | 24 | Summarize the main findings including the strength of evidence for each main outcome; consider their relevance to key groups (e.g., healthcare providers, users, and policy makers).                     | 11-13,                               |
| Limitations                   | 25 | Discuss limitations at study and outcome level (e.g., risk of bias), and at review-level (e.g., incomplete retrieval of identified research, reporting bias).  | 13                                   |
| Conclusions                   | 26 | Provide a general interpretation of the results in the context of other evidence, and implications for future research.  | 14                                   |
| <b>FUNDING</b>                |    |  |                                      |
| Funding                       | 27 | Describe sources of funding for the systematic review and other support (e.g., supply of data); role of funders for the systematic review.   | 15                                   |

**Table S2. Search strategy for peer-reviewed databases.** Search results were done on 23 July 2020.

| Database             | Search Terms   | Hits       |
|----------------------|--|------------|
| Ovid MEDLINE         | <ol style="list-style-type: none"> <li>1. COVID-19</li> <li>2. COVID19</li> <li>3. COVID</li> <li>4. "Coronavirus disease 2019"</li> <li>5. 2019-nCoV</li> <li>6. SARS-CoV-2</li> <li>7. 1 OR 2 OR 3 OR 4 OR 5 OR 6</li> <li>8. neutrophil-to-lymphocyte</li> <li>9. NLR</li> <li>10. 8 OR 9</li> <li>11. Sever*</li> <li>12. "Intensive care unit"</li> <li>13. ICU</li> <li>14. Mortality</li> <li>15. Death</li> <li>16. Non-survivor</li> <li>17. 11 OR 12 OR 13 OR 14 OR 15 OR 16</li> <li>18. 7 AND 10 AND 17</li> </ol> | 94         |
| Ovid EMBASE          | <ol style="list-style-type: none"> <li>1. COVID-19</li> <li>2. COVID19</li> <li>3. COVID</li> <li>4. "Coronavirus disease 2019"</li> <li>5. 2019-nCoV</li> <li>6. SARS-CoV-2</li> <li>7. 1 OR 2 OR 3 OR 4 OR 5 OR 6</li> <li>8. neutrophil-to-lymphocyte</li> <li>9. NLR</li> <li>10. 8 OR 9</li> <li>11. Sever*</li> <li>12. "Intensive care unit"</li> <li>13. ICU</li> <li>14. Mortality</li> <li>15. Death</li> <li>16. Non-survivor</li> <li>17. 11 OR 12 OR 13 OR 14 OR 15 OR 16</li> <li>18. 7 AND 10 AND 17</li> </ol> | 58         |
| SCOPUS               | (TITLE-ABS-KEY(COVID-19) OR TITLE-ABS-KEY(COVID19) OR TITLE-ABS-KEY(COVID) OR TITLE-ABS-KEY("coronavirus disease 2019") OR TITLE-ABS-KEY(2019-ncov) OR TITLE-ABS-KEY(sars-cov-2)) AND (TITLE-ABS-KEY(neutrophil-to-lymphocyte) OR TITLE-ABS-KEY(NLR)) AND (TITLE-ABS-KEY(sever*) OR TITLE-ABS-KEY("intensive care unit") OR TITLE-ABS-KEY(ICU) OR TITLE-ABS-KEY(mortality) OR TITLE-ABS-KEY(death) OR TITLE-ABS-KEY(non-survivor))   | 49         |
| The Cochrane Library | ("Covid-19" OR "COVID19" OR "COVID" OR "coronavirus disease 2019" OR "2019-nCoV" OR "SARS-CoV-2") in Title Abstract Keyword AND (neutrophil-to-lymphocyte OR NLR) in Title Abstract Keyword AND (sever* OR "intensive care unit" OR ICU OR mortality OR death OR non-survivor)   | 2          |
| <b>Total</b>         |  | <b>203</b> |

**Table S3. The characteristics of included studies comparing severe and non-severe COVID-19 patients.**

| Author        | Groups             | Sample (N) | M/F (male %) | p       | Age (years)<br>Mean ± SD /<br>Median (IQR) | p        | DM<br>N (%) | p       | HT<br>N (%) | p       | CVD<br>N (%) | p       | NLR Value<br>Mean ± SD /<br>Median (IQR) | p        |
|---------------|--------------------|------------|--------------|---------|--|----------|-------------|---------|-------------|---------|--------------|---------|--|----------|
| Qin C et al   | Severe             | 286        | 155/131 (54) | 0.242   | 61 (51-69)                                 | <0.001*  | 53 (19)     | 0.152   | 105 (37)    | <0.001* | 24 (8)       | 0.004*  | 5.5 (3.3–10.0)                           | <0.001*  |
|               | Non-severe         | 166        | 80/86 (48)   |         | 53 (41-62)                                 |          | 22 (13)     |         | 30 (18)     |         | 3 (2)        |         | 3.2 (1.8–4.9)                            |          |
| Zhang Y et al | Severe             | 31         | 20/11 (65)   | 0.004*  | 65 ± 13                                    | <0.001*  | NR          | NR      | NR          | NR      | NR           | NR      | 7.58 ± 7.04                              | <0.001*  |
|               | Mild               | 84         | 29/55 (35)   |         | 44 ± 15                                    |          | NR          |         | NR          |         | NR           |         | 2.28 ± 1.29                              |          |
| Yang AP et al | Severe             | 24         | 18/6 (75)    | 0.135   | 58 ± 12                                    | <0.05*   | 13 (54)     | <0.01*  | 16 (67)     | <0.01*  | 9 (38)       | <0.01*  | 20.7 ± 24.1                              | <0.01*   |
|               | Non-severe         | 69         | 38/31 (55)   |         | 42 ± 19                                    |          | 8 (12)      |         | 7 (10)      |         | 4 (6)        |         | 4.8 ± 3.5                                |          |
| Gong J et al  | Severe             | 28         | 16/12 (57)   | 0.3     | 64 (55-72)                                 | <0.01*   | NR          | NR      | NR          | NR      | NR           | NR      | 3.7 (2.0-6.7)                            | <0.01*   |
|               | Non-severe         | 161        | 72/89 (45)   |         | 45 (33-62)                                 |          | NR          |         | NR          |         | NR           |         | 1.9 (1.4-2.9)                            |          |
| Zhu Z et al   | Severe             | 16         | 9/7 (56)     | 0.457   | 58 ± 12                                    | 0.03*    | 0 (0)       | 0.451   | 8 (50)      | 0.025*  | 2 (13)       | 0.348   | 4.24 (3.00-10.87)                        | 0.015*   |
|               | Non-severe         | 111        | 73/38 (66)   |         | 50 ± 16                                    |          | 10 (9)      |         | 23 (21)     |         | 4 (4)        |         | 2.75 (1.90-3.95)                         |          |
| Sun S et al   | Severe             | 27         | 18/9 (67)    | 0.076   | 62 (53-71)                                 | <0.001*  | NR          | NR      | NR          | NR      | NR           | NR      | 8.71 (3.77-14.4)                         | <0.001*  |
|               | Common             | 89         | 42/47 (47)   |         | 47 (37-55)                                 |          | NR          |         | NR          |         | NR           |         | 2.41 (1.73-3.47)                         |          |
| Liu F et al   | Severe             | 19         | 15/4 (79)    | 0.006*  | 63 (40-66)                                 | 0.086    | 3 (16)      | 0.152   | 6 (32)      | 0.217   | 1 (5)        | 0.540   | 3.4 (2.8-5.8)                            | 0.010*   |
|               | Non-severe         | 115        | 48/67 (42)   |         | 50 (36-64)                                 |          | 7 (6)       |         | 21 (18)     |         | 4 (4)        |         | 2.7 (1.8-3.7)                            |          |
| Fu J et al    | Severe             | 16         | 10/6 (63)    | 0.818   | 52 ± 13                                    | 0.095    | 4 (5)       | NR      | 7 (9)       | NR      | NR           | NR      | 6.29 ± 3.72                              | 0.001*   |
|               | Mild/moderate      | 59         | 35/24 (59)   |         | 45 ± 14                                    |          | NR          |         | NR          |         | NR           |         | 2.33 ± 1.22                              |          |
| Ding X et al  | Severe             | 15         | 9/6 (60)     | 0.216   | 67 (55-76)                                 | <0.001*  | 5 (7)       | NR      | 9 (13)      | NR      | 6 (8)        | NR      | 3.6 (2.4-9.6)                            | 0.002*   |
|               | Non-severe         | 57         | 24/33 (42)   |         | 46 (35-60)                                 |          | NR          |         | NR          |         | NR           |         | 1.9 (1.3-2.9)                            |          |
| Chen R et al  | Critical           | 48         | 38/10 (79)   | NR      | 61 ± 14                                    | NR       | 5 (10)      | NR      | 23 (48)     | NR      | 7 (15)       | NR      | 16.06 (11.26-26.35)                      | <0.001*  |
|               | Severe             | 155        | 93/62 (60)   |         | 61 ± 14                                    |          | 23 (15)     |         | 52 (34)     |         | 14 (9)       |         | 8.96 (4.62-17.04)                        |          |
|               | Mild/moderate      | 345        | 182/163 (53) |         | 67 ± 12                                    |          | 33 (10)     |         | 73 (21)     |         | 14 (4)       |         | 3.37 (2.05-6.65)                         |          |
| Shang W et al | Severe             | 139        | 82/57 (59)   | 0.008*  | 64 (54-73)                                 | <0.001*  | 20 (14)     | 0.946   | 45 (32)     | 0.382   | 25 (18)      | <0.001* | 4.75 (2.51-9.42)                         | <0.001*  |
|               | Non-severe         | 304        | 138/166 (45) |         | 58 (47-67)                                 |          | 43 (14)     |         | 86 (28)     |         | 19 (6)       |         | 2.38 (1.57-3.72)                         |          |
| Xie G et al   | Severe             | 12         | 10/2 (83)    | 0.003*  | 52 (35-66)                                 | 0.092    | 2 (17)      | 0.068   | 4 (33)      | 0.042*  | 2 (17)       | 0.032*  | 3.0 (1.56-6.55)                          | 0.026*   |
|               | Non-severe         | 85         | 43/42 (51)   |         | 45 (32-60)                                 |          | 3 (4)       |         | 16 (19)     |         | 5 (6)        |         | 2.74 (2.03-3.96)                         |          |
| Xie L et al   | Severe             | 51         | 29/22 (57)   | 0.039*  | NR   | NR       | 8 (16)      | 0.0466* | 12 (24)     | 0.3790  | 6 (12)       | 0.0130* | 7.90 ± 10.20                             | <0.0001* |
|               | Non-severe         | 322        | 168/154 (52) |         | NR   |          | 21 (7)      |         | 59 (18)     |         | 12 (4)       |         | 2.93 ± 1.80                              |          |
| Zhou Y et al  | Moderate           | 140        | 55/85 (39)   | NR      | 56 ± 14                                    | NR       | NR          | NR      | NR          | NR      | NR           | NR      | 3.1 ± 2.41                               | NR       |
|               | Severe             | 123        | 58/65 (47)   |         | 64 ± 14                                    |          | NR          |         | NR          |         | NR           |         | 11.66 ± 27.66                            |          |
|               | Critically severe  | 41         | 25/16 (61)   |         | 65 ± 13                                    |          | NR          |         | NR          |         | NR           |         |  |          |
| Wu S et al    | Severe or critical | 67         | 45/22 (67)   | NR      | 66 (54-73)                                 | NR       | 8 (12)      | NR      | 22 (33)     | NR      | 6 (9)        | NR      | 5.8 (3.3-13.0)                           | NR       |
|               | Moderate           | 203        | 86/117 (42)  |         | 61 (50-68)                                 |          | 27 (13)     |         | 59 (29)     |         | 5 (3)        |         | 2.2 (1.5-3.4)                            |          |
| Kong M et al  | Severe             | 87         | 45/42 (52)   | 0.592   | 68 ± 12                                    | 0.005*   | 18 (21)     | 0.004*  | 47 (54)     | <0.001* | 11 (13)      | 0.195   | 6.6 (2.1-11.1)                           | <0.001*  |
|               | Mild               | 123        | 59/64 (48)   |         | 53 ± 16                                    |          | 9 (7)       |         | 32 (26)     |         | 9 (7)        |         | 3.3 (1.0-3.4)                            |          |
| Wang F et al  | Severe             | 70         | 45/25 (64)   | 0.002*  | 60 (49-64)                                 | <0.001*  | NR          | NR      | NR          | NR      | NR           | NR      | 2.72 (1.87-4.37)                         | <0.001*  |
|               | Non-severe         | 253        | 109/144 (43) |         | 41 (32-56)                                 |          | NR          |         | NR          |         | NR           |         | 1.72 (1.19-2.53)                         |          |
| Liao D et al  | Critical           | 86         | 61/25 (71)   | 0.0011* | 68 (61-78)                                 | <0.0001* | 17 (20)     | 0.017*  | 28 (33)     | 0.21    | 8 (9)        | 0.085   | 16.02 (6.49-24.79)                       | <0.0001* |
|               | Severe             | 145        | 76/69 (52)   |         | 67 (58-76)                                 |          | 30 (21)     |         | 49 (34)     |         | 8 (6)        |         | 4.71 (2.62-7.78)                         |          |
|               | Moderate           | 149        | 69/80 (46)   |         | 56 (42-68)                                 |          | 14 (9)      |         | 37 (25)     |         | 4 (3)        |         | 2.67 (1.69-4.08)                         |          |

|  |                     |     |              |       |            |          |         |       |         |         |         |        |                   |          |
|--|---------------------|-----|--------------|-------|------------|----------|---------|-------|---------|---------|---------|--------|-------------------|----------|
| Ok F et al   | Severe              | 54  | 24/30 (44)   | 0.976 | 68 ± 15    | <0.001*  | 3 (13)  | 0.378 | 10 (44) | 0.001*  | 6 (26)  | 0.004* | 6.1 (5.1)         | <0.001*  |
|  | Non-severe          | 85  | 38/47 (45)   |       | 47 ± 16    |          | 4 (7)   |       | 6 (10)  |         | 2 (3)   |        | 2.46 (2.3)        |          |
| Guner R et al  | SARI/Critical       | 50  | 33/17 (66)   | 0.285 | 62 ± 12    | <0.001*  | 10 (20) | 0.127 | 16 (32) | 0.104   | 20 (40) | 0.006* | 5.6 (1.5-38)#     | <0.001*  |
|  | Mild/pneumonia      | 172 | 99/73 (58)   |       | 48 ± 16    |          | 20 (12) |       | 36 (21) |         | 36 (21) |        | 2.5 (0.4-28)#     |          |
| Song CY et al  | Severe              | 42  | 30/12 (71)   | 0.083 | 56 (48-64) | 0.039*   | 4 (10)  | 0.637 | 22 (52) | <0.001* | 4 (10)  | 0.292  | 8.2 (3.9-19.2)    | 0.001*   |
|  | Non-severe          | 31  | 16/15 (52)   |       | 48 (37-59) |          | 2 (7)   |       | 4 (13)  |         | 1 (3)   |        | 3.0 (1.9-5.5)     |          |
| Liu J et al  | Severe              | 79  | 46/33 (58)   | 0.849 | 65 (54-71) | 0.008*   | 13 (17) | 0.082 | 37 (47) | 0.086   | 2 (3)   | 0.540  | 8.83 (4.20-15.53) | <0.001*  |
|  | Common              | 43  | 26/17 (61)   |       | 55 (38-66) |          | 2 (5)   |       | 13 (30) |         | 0 (0)   |        | 3.11 (1.96-5.00)  |          |
| Ma Y et al   | Severe              | 63  | 29/34 (46)   | 0.113 | 53 ± 13    | <0.0001* | 6 (10)  | NR    | 15 (24) | NR      | NR      | NR     | 9.38 ± 10.52      | <0.0001* |
|  | Ordinary (Moderate) | 486 | 262/224 (54) |       | 45 ± 15    |          | 23 (5)  |       | 75 (15) |         | NR      |        | 3.58 ± 3.07       |          |
|  | Mild                | 86  | 37/49 (43)   |       | 39 ± 18    |          | 6 (7)   |       | 15 (17) |         | NR      |        | 2.73 ± 2.28       |          |
| Chen C et al   | Critical            | 23  | 15/8 (65)    | 0.152 | 68 (63-79) | 0.025*   | 9 (39)  | 0.575 | 19 (83) | 0.102   | 7 (30)  | 0.387  | 7.08 (3.48-12.89) | 0.010*   |
|  | Mild                | 109 | 61/48 (56)   |       | 62 (53-70) |          | 36 (27) |       | 71 (65) |         | 24 (22) |        | 4.10 (2.19-7.51)  |          |
| Wang J et al   | Severe              | 8   | 27/28 (49)   | NR    | 45 (25-61) | NR       | 5 (9)   | NR    | 13 (24) | NR      | 1 (2)   | NR     | 2.4 (1.4-16.2)    | NR       |
|  | Moderate            | 25  |              |       |            |          |         |       |         |         |         |        | 2.3 (1.7-2.9)     |          |
|  | Mild                | 22  |              |       |            |          |         |       |         |         |         |        | 1.8 (0.9-2.8)     |          |
| CVD = Cardiovascular disease; DM = Diabetes mellitus; HT = Hypertension; IQR = Interquartile range; NLR = Neutrophil-to-lymphocyte ratio; NR = Not reported; p = p-value; SD = Standard deviation; # = Minimum to maximum; * = Statistically significant |                     |     |              |       |            |          |         |       |         |         |         |        |                   |          |

**Table S4. The characteristics of included studies comparing survivors and non-survivors of COVID-19.**

| Author        | Groups                     | Sample (N) | M/F (male%)  | p       | Age (years)<br>Mean ± SD /<br>Median (IQR) | p       | DM<br>N (%) | p       | HT<br>N (%) | p       | CVD<br>N (%)          | p       | NLR value<br>Mean ± SD /<br>Median (IQR) | p        |
|---------------|----------------------------|------------|--------------|---------|--|---------|-------------|---------|-------------|---------|-----------------------|---------|--|----------|
| Liu Y et al   | NLR Tertile 1 (0.54-2.21)  | 82         | 24/58 (29)   | <0.001* | 48 ± 16                                    | <0.001* | 5 (6)       | 0.131   | 11 (13)     | 0.005*  | 5 (6)                 | 0.100   | NR                                       | NR       |
|               | NLR Tertile 2 (2.21-4.82)  | 81         | 40/41 (49)   |         | 53 ± 17                                    |         | 6 (7)       |         | 14 (17)     |         | 3 (4)                 |         | NR                                       |          |
|               | NLR Tertile 3 (4.85-88.09) | 82         | 50/32 (61)   |         | 61 ± 15                                    |         | 12 (15)     |         | 27 (33)     |         | 10 (12)               |         | NR                                       |          |
| Chen R et al  | Survivor                   | 445        | 244/201 (55) | <0.05*  | 54 ± 14                                    | <0.01*  | 41 (9)      | <0.01*  | 103 (23)    | <0.01*  | 24 (5)                | >0.05   | 3.71 (2.27-7.54)                         | <0.001*  |
|               | Non-survivor               | 103        | 69/34 (67)   |         | 67 ± 12                                    |         | 20 (19)     |         | 45 (44)     |         | 11 (11)               |         | 13.45 (9.33-23.60)                       |          |
| Huang J et al | Survivor                   | 283        | 149/134 (53) | 0.318   | 53 ± 17                                    | <0.001* | 31 (11)     | 0.103   | 63 (22)     | <0.001* | 14 (5)                | 0.011*  | 3.3 ± 4.3                                | 0.013*   |
|               | Non-survivor               | 16         | 11/5 (69)    |         | 69 ± 10                                    |         | 4 (25)      |         | 11 (69)     |         | 4 (25)                |         | 13.3 ± 14.3                              |          |
| Zhang N et al | Survivor                   | 50         | 36/14 (72)   | NR      | 63 ± 11                                    | 0.044*  | 5 (10)      | 0.025*  | 18 (36)     | 0.811   | 11 (22)               | 0.587   | 8.4 ± 7.5                                | 0.030*   |
|               | Non-survivor               | 10         | 7/3 (70)     |         | 71 ± 9                                     |         | 4 (40)      |         | 4 (40)      |         | 3 (30)                |         | 18.7 ± 16.6                              |          |
| Li L et al    | Survivor                   | 68         | 26/42 (38)   | 0.098   | 44 ± 13                                    | <0.01*  | 6 (9)       | 0.158   | 0 (0)       | NR      | 0 (0)                 | NR      | 2.3 (1.6-3.8)                            | <0.0001* |
|               | Non-survivor               | 25         | 15/10 (60)   |         | 69 ± 11                                    |         | 5 (20)      |         | 5 (20)      |         | 4 (16)                |         | 0.2 (0.1-0.5)                            |          |
| Luo X et al   | Survivor                   | 214        | 99/115 (46)  | 0.025*  | 51 (37-63)                                 | <0.001* | 27 (13)     | 0.056   | 37 (17)     | <0.001* | 13 (6)                | 0.010*  | 2.96 (2.13-4.61)                         | <0.001*  |
|               | Non-survivor               | 84         | 51/33 (61)   |         | 71 (64-80)                                 |         | 18 (21)     |         | 49 (58)     |         | 13 (16)               |         | 8.17 (6.15-10.90)                        |          |
| Yan X et al   | Survivor                   | 964        | 466/498 (48) | 0.018*  | 62 (50-70)                                 | 0.007*  | 97 (11)     | 0.003*  | 215 (22)    | <0.001* | 65 (7)                | <0.001* | 4.11(2.44-8.12)                          | <0.001*  |
|               | Non-survivor               | 40         | 27/13 (68)   |         | 68 (58-79)                                 |         | 10 (25)     |         | 20 (50)     |         | 10 (25)               |         | 49.06(25.71-69.70)                       |          |
| Chen L et al  | Survivor                   | 1651       | 781/870 (47) | <0.001* | 57 (43-66)                                 | <0.001* | 203 (12)    | <0.001* | 475 (29)    | <0.001* | 205 (12) <sup>§</sup> | <0.001* | 3 (2-4)                                  | <0.001*  |
|               | Non-survivor               | 208        | 153/55 (74)  |         | 70 (63-78)                                 |         | 59 (28)     |         | 104 (50)    |         | 62 (30) <sup>§</sup>  |         | 11 (6-20)                                |          |
| Tatum D et al | NLR ≤ 4.94                 | 62         | 27/35 (43)   | 0.605   | 56 ± 15                                    | 0.007*  | NR          | NR      | NR          | NR      | NR                    | NR      | NR                                       | NR       |
|               | NLR > 4.94                 | 57         | 27/30 (47)   |         | 62 ± 14                                    |         | NR          |         | NR          |         | NR                    |         | NR                                       |          |
| Ullah W et al | NLR < 10                   | 141        | 66/75 (47)   | 0.167   | 64   | 0.71    | 49 (35)     | 0.716   | 93 (66)     | 0.237   | 27 (19)               | 0.16    | NR                                       | NR       |
|               | NLR > 11                   | 26         | 16/10 (62)   |         | 62   |         | 10 (39)     |         | 14 (54)     |         | 2 (8)                 |         | NR                                       |          |
| Ye W et al    | Survivor                   | 297        | 137/160 (46) | 0.002*  | 60 (50-67)                                 | <0.001* | 41 (14)     | 0.004*  | 73 (25)     | <0.001* | 5 (2)                 | <0.001* | 2.88 (1.79-6.74)                         | <0.001*  |
|               | Non-survivor               | 52         | 36/16 (69)   |         | 69 (63-76)                                 |         | 16 (31)     |         | 30 (58)     |         | 11 (21)               |         | 14.96 (8.52-26.58)                       |          |
| Yang Q et al  | Survivor                   | 176        | 82/94 (47)   | 0.077   | 50 ± 15                                    | <0.001* | 28 (16)     | 0.008*  | 47 (27)     | <0.001* | 6 (3)                 | 0.010*  | 2.98 (1.70-5.51)                         | <0.001*  |
|               | Non-survivor               | 50         | 31/19 (62)   |         | 68 ± 16                                    |         | 17 (34)     |         | 37 (74)     |         | 7 (14)                |         | 6.18 (3.58-12.78)                        |          |
| Zhang S et al | Survivor                   | 420        | 213/207 (51) | NR      | 59 (48-67)                                 | NR      | 60 (14)     | NR      | 107 (26)    | NR      | 53 (13)               | NR      | 3.91 (2.07-6.79)                         | <0.001*  |
|               | Non-survivor               | 96         | 72/24 (75)   |         | 67 (61-74)                                 |         | 16 (17)     |         | 31 (32)     |         | 14 (15)               |         | 10.99 (7.68-20.97)                       |          |
| Cheng B et al | Survivor                   | 67         | 22/45 (33)   | 0.002*  | 71 ± 7                                     | 0.048*  | 11 (16)     | 0.055   | 39 (58)     | 0.321   | 11 (16)               | 0.334   | 4.1 ± 2.9                                | <0.001*  |
|               | Non-survivor               | 51         | 31/20 (61)   |         | 73 ± 7                                     |         | 16 (31)     |         | 25 (49)     |         | 12 (24)               |         | 13.3 ± 14.9                              |          |
| Chen C et al  | Survivor                   | 119        | 67/52 (56)   | 0.371   | NR   | NR      | 42 (35)     | 0.378   | 80 (68)     | 0.476   | 24 (20)               | 0.007*  | 4.19 (2.30-7.39)                         | 0.007*   |
|               | Non-survivor               | 13         | 9/4 (69)     |         | NR   |         | 3 (23)      |         | 10 (77)     |         | 7 (54)                |         | 12.21 (3.66-14.98)                       |          |

CVD = Cardiovascular disease; DM = Diabetes mellitus; HT = Hypertension; IQR = Interquartile range; NLR = Neutrophil-to-lymphocyte ratio; NR = Not reported; p = p-value; SD = Standard deviation; § = Included cerebrovascular disease; \* = Statistically significant

**Table S5. Risk of bias assessment of all included studies using the Newcastle-Ottawa Scale (NOS).**

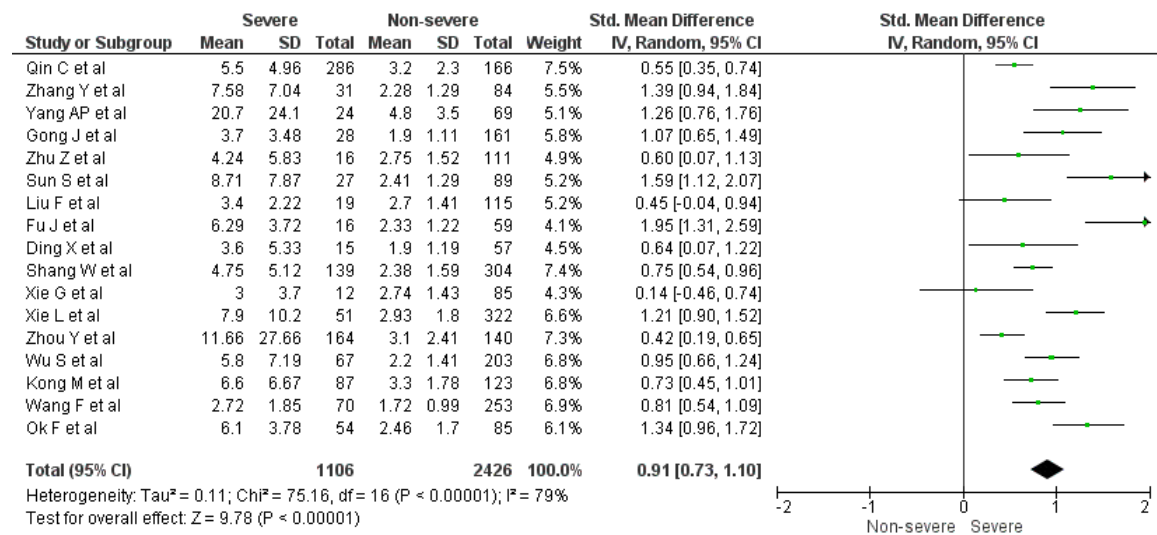
| No | Author        | Date of Publication | Publication Type | Study Location  | Study Period           | Study Design                | Selection | Comparability | Outcome/Exposure |
|----|---------------|---------------------|------------------|---|------------------------|-----------------------------|-----------|---------------|------------------|
| 1  | Qin C et al   | 12/03/2020          | Peer-reviewed    | Tongji Hospital, Wuhan, China   | 10 Jan 20 to 12 Feb 20 | Retrospective Observational | **        | -             | ***              |
| 2  | Zhang Y et al | 30/03/2020          | Peer-reviewed    | Zhongnan Hospital, Wuhan, China   | 18 Jan 20 to 22 Feb 20 | Retrospective Observational | **        | **            | ***              |
| 3  | Yang AP et al | 13/04/2020          | Peer-reviewed    | China   | NR                     | Retrospective Observational | **        | **            | ***              |
| 4  | Gong J et al  | 16/04/2020          | Peer-reviewed    | Guangzhou Eighth Peoples Hospital, Zhongnan Hospital, Third Affiliated Hospital, China                      | 20 Jan 20 to 02 Mar 20 | Retrospective Observational | ***       | *             | ***              |
| 5  | Zhu Z et al   | 17/04/2020          | Peer-reviewed    | Hwa Mei Hospital, Zhejiang, China   | 23 Jan 20 to 20 Feb 20 | Retrospective Observational | **        | **            | ***              |
| 6  | Liu Y et al   | 20/04/2020          | Peer-reviewed    | Zhongnan Hospital, Wuhan, China   | 1 Jan 20 to 29 Feb 20  | Retrospective Observational | ***       | **            | ***              |
| 7  | Sun S et al   | 24/04/2020          | Peer-reviewed    | Wenzhou, China  | 19 Jan 20 to 20 Feb 20 | Retrospective Observational | **        | -             | ***              |
| 8  | Liu F et al   | 27/04/2020          | Peer-reviewed    | Shanghai Public Health Clinical Center, Shanghai, China   | 20 Jan 20 to 3 Feb 20  | Retrospective Observational | ***       | **            | ***              |
| 9  | Fu J et al    | 06/05/2020          | Peer-reviewed    | Affiliated Infectious Diseases Hospital, Suzhou, China  | 20 Jan 20 to 10 Mar 20 | Retrospective Observational | **        | *             | ***              |
| 10 | Ding X et al  | 10/05/2020          | Peer-reviewed    | Beijing YouAn Hospital, Beijing, China  | 21 Jan 20 to 20 Mar 20 | Retrospective Observational | **        | **            | ***              |
| 11 | Chen R et al  | 11/05/2020          | Peer-reviewed    | 575 hospitals, China  | Up to 22 Mar 20        | Retrospective Observational | ****      | **            | ***              |
| 12 | Huang J et al | 11/05/2020          | Peer-reviewed    | Third People's Hospital of Yichang, Hubei, China  | 25 Jan 20 to 24 Mar 20 | Retrospective Observational | ***       | **            | ***              |
| 13 | Zhang N et al | 14/05/2020          | Peer-reviewed    | WuGang General Hospital, Wuhan; and First Affiliated Hospital of Hunan University of Medicine, Hunan, China | 9 Jan 20 to 19 Feb 20  | Retrospective Observational | ***       | -             | ***              |
| 14 | Li L et al    | 15/05/2020          | Peer-reviewed    | Union Hospital, Wuhan, China  | 10 Jan 20 to 22 Feb 20 | Retrospective Observational | ***       | *             | ***              |
| 15 | Shang W et al | 15/05/2020          | Peer-reviewed    | Wuhan Forth Hospital, Wuhan, China  | 16 Jan 20 to 28 Feb 20 | Retrospective Observational | **        | **            | ***              |
| 16 | Luo X et al   | 23/05/2020          | Peer-reviewed    | Eastern Campus of Renmin Hospital, Wuhan, China   | 30 Jan 20 to 20 Feb 20 | Retrospective Observational | ***       | **            | ***              |
| 17 | Yan X et al   | 26/05/2020          | Peer-reviewed    | Wuhan Third Hospital & Tongren Hospital, Wuhan, China   | 11 Jan 20 to 3 Mar 20  | Retrospective Observational | ***       | **            | ***              |



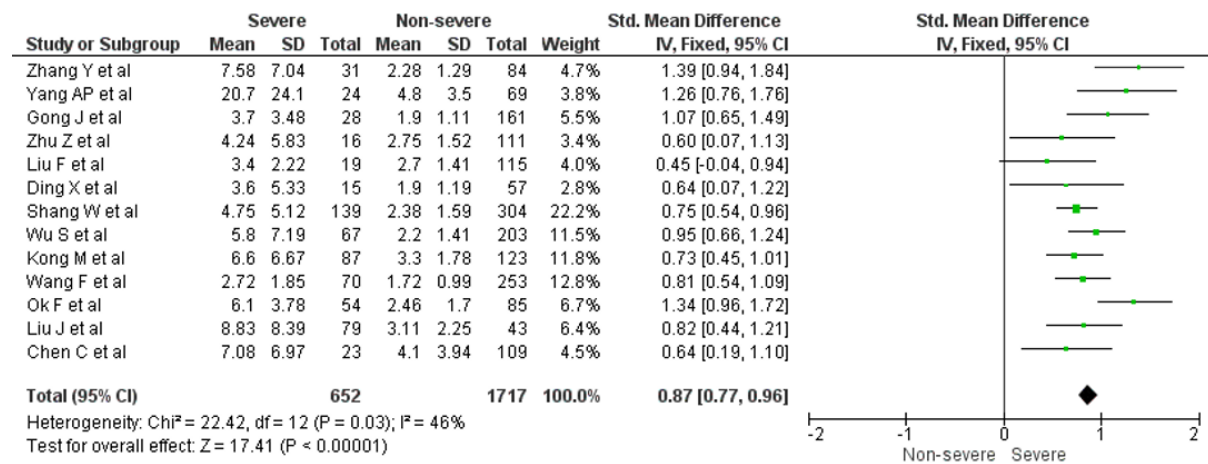
|    |               |            |               |   |                        |                             |      |    |     |
|----|---------------|------------|---------------|---|------------------------|-----------------------------|------|----|-----|
| 18 | Xie G et al   | 27/05/2020 | Peer-reviewed | Shanghai Public Health Clinical Center, Shanghai, China   | 20 Jan 20 to 20 Feb 20 | Retrospective Observational | **   | -  | *** |
| 19 | Xie L et al   | 15/06/2020 | Peer-reviewed | Shanghai Public Health Clinical Center and Affiliated Hospital of Putian University, Shanghai, China  | 20 Jan 20 to 29 Feb 20 | Retrospective Observational | **   | -  | *** |
| 20 | Chen L et al  | 16/06/2020 | Peer-reviewed | Union Hospital (Main, Union West and Union Tumor Hospital), Wuhan Central Hospital, General Hospital of Central Theater Command, PLA Wuhan Third Hospital, Wuhan Jin-Yin-Tan Hospital, Wuhan, China | 20 Jan 20 to 4 Apr 20  | Retrospective Observational | **** | ** | *** |
| 21 | Zhou Y et al  | 16/06/2020 | Peer-reviewed | Wuhan Red Cross Hospital, Wuhan, China  | 1 Feb 20 to 15 Mar 20  | Retrospective Observational | **   | -  | *** |
| 22 | Wu S et al    | 18/06/2020 | Peer-reviewed | Wuhan Fourth Hospital, Wuhan, China   | 27 Jan 20 to 26 Feb 20 | Retrospective Observational | **   | ** | *** |
| 23 | Tatum D et al | 19/06/2020 | Peer-reviewed | Two hospital, Southern Louisiana, USA   | NR                     | Prospective Observational   | ***  | -  | *** |
| 24 | Ullah W et al | 25/06/2020 | Peer-reviewed | Abington Hospital-Jefferson Health, Philadelphia, USA   | 1 Mar 20 to 10 May 20  | Retrospective Observational | ***  | ** | *** |
| 25 | Kong M et al  | 30/06/2020 | Peer-reviewed | Central Hospital of Wuhan, Wuhan, China   | 27 Jan 20 to 9 Mar 20  | Retrospective Observational | **   | ** | *** |
| 26 | Wang F et al  | 03/07/2020 | Peer-reviewed | Third People's Hospital, Shenzhen, China  | 10 Jan 20 to 10 Feb 20 | Retrospective Observational | ***  | ** | *** |
| 27 | Ye W et al    | 03/07/2020 | Peer-reviewed | Wuhan Pulmonary Hospital Wuhan, China   | 1 Jan 20 to 16 Mar 20  | Retrospective Observational | ***  | ** | *** |
| 28 | Yang Q et al  | 06/07/2020 | Peer-reviewed | Central Hospital of Wuhan, China  | 1 Jan 20 to 29 Feb 20  | Retrospective Observational | ***  | ** | *** |
| 29 | Liao D et al  | 10/07/2020 | Peer-reviewed | Wuhan Union Hospital (Main campus, West Campus, and Cancer Centre)  | 23 Jan 20 to 23 Feb 20 | Retrospective Observational | **   | ** | *** |
| 30 | Ok F et al    | 10/07/2020 | Peer-reviewed | Siirt State Hospital, Siirt, Turkey   | Apr 20 to May 20       | Retrospective Observational | **   | ** | *** |
| 31 | Guner R et al | 15/07/2020 | Peer-reviewed | Ankara City Hospital, Ankara, Turkey  | 10 Mar 20 to 10 Apr 20 | Retrospective Observational | **   | *  | *** |
| 32 | Zhang S et al | 16/07/2020 | Peer-reviewed | Wuhan Union Hospital West Area, Wuhan, China  | 12 Jan 20 to 18 May 20 | Retrospective Observational | ***  | *  | *** |
| 33 | Song CY et al | 05/03/2020 | Preprint      | First Affiliated Hospital, Hangzhou, China  | 20 Jan 20 to 19 Feb 20 | Retrospective Observational | **   | ** | **  |

|    |               |            |          |   |                        |                             |     |    |     |
|----|---------------|------------|----------|---|------------------------|-----------------------------|-----|----|-----|
| 34 | Liu J et al   | 24/03/2020 | Preprint | Jinyintan Hospital, Wuhan, China            | 13 Jan 20 to 25 Feb 20 | Retrospective Observational | **  | ** | *** |
| 35 | Cheng B et al | 14/04/2020 | Preprint | Union Dongxihu Hospital, Wuhan, China       | 12 Jan 20 to 26 Feb 20 | Retrospective Observational | *** | ** | *** |
| 36 | Ma Y et al    | 14/04/2020 | Preprint | 43 hospitals in China                       | 28 Jan 20 to 25 Feb 20 | Retrospective Observational | **  | ** | **  |
| 37 | Chen C et al  | 07/05/2020 | Preprint | Hubei Third People's Hospital, Hubei, China | 19 Jan 20 to 7 Mar 20  | Retrospective Observational | *** | ** | *** |
| 38 | Wang J et al  | 26/05/2020 | Preprint | Fifth People's Hospital, Wuxi, China        | 23 Jan 20 to 15 Mar 20 | Retrospective Observational | **  | -  | *** |

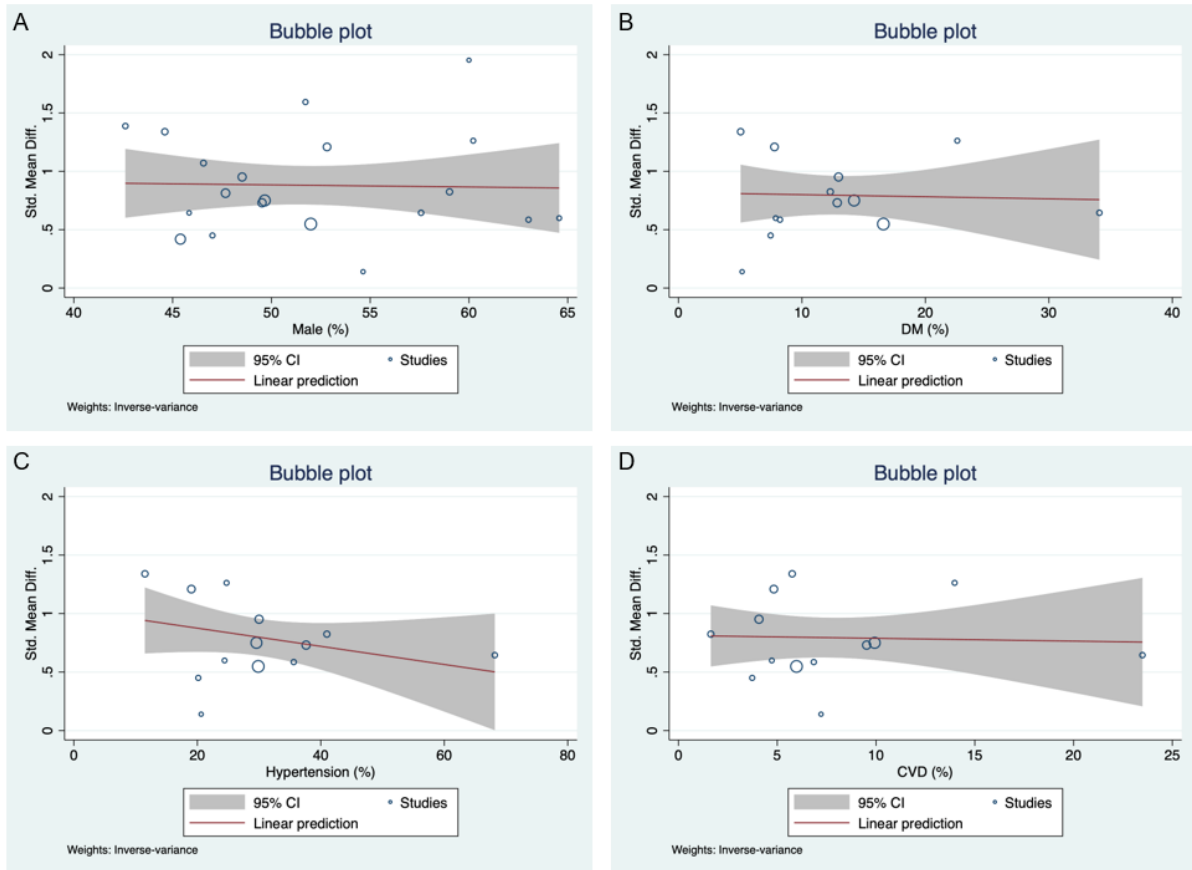
**Figure S1. Meta-analysis restricted to only peer-reviewed studies comparing the NLR value on admission in severe vs. non-severe COVID-19 patients.**



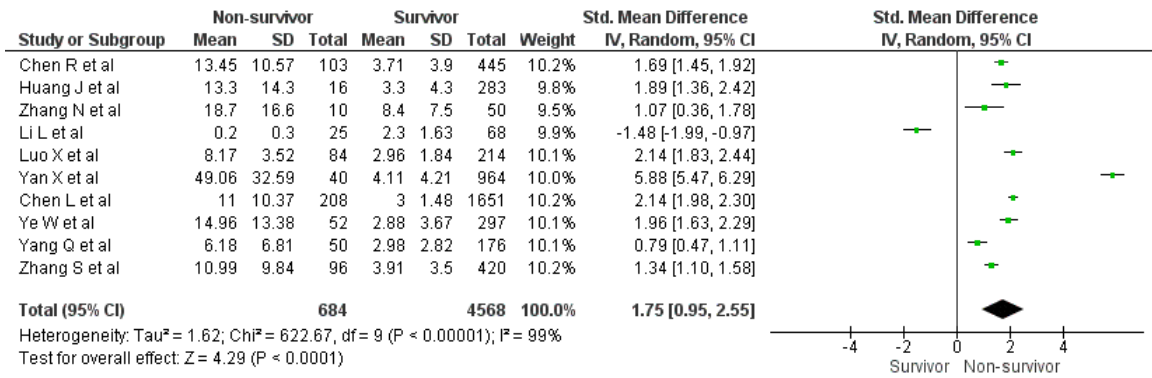
**Figure S2. Meta-analysis restricted to studies with low risk of bias score comparing the NLR value on admission in severe vs. non-severe COVID-19 patients.**



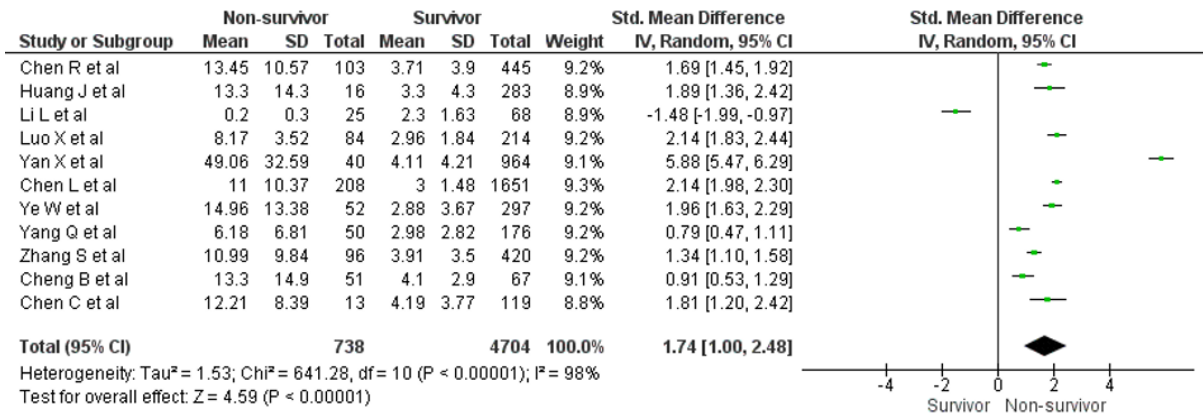
**Figure S3. Bubble plot for meta-regression in studies with severity outcome.** The association between NLR values on admission and COVID-19 severity was not affected by gender (A), diabetes mellitus (B), hypertension (C), and cardiovascular diseases (D).



**Figure S4. Meta-analysis restricted to only peer-reviewed studies comparing the NLR value on admission in survivors vs. non-survivors of COVID-19.**



**Figure S5. Meta-analysis restricted to studies with low risk of bias score comparing the NLR value on admission in survivors vs. non-survivors of COVID-19.**



**Figure S6. Bubble plot for meta-regression in studies with mortality outcome.** The association between NLR values on admission and COVID-19 mortality was not affected by gender (A), diabetes mellitus (B), hypertension (C), and cardiovascular diseases (D).

