

## **Supplementary Information for**

### **Hicks *et al.*: A dual antigen ELISA allows the assessment of SARS-CoV-2 antibody seroprevalence in a low transmission setting**

This data supplement contains:

SARS-CoV-2 Testing in Elective Surgery Collaborators

Supplementary Materials and Methods

Supplementary Table 1: Optimization of ELISA parameters

Supplementary Figure 1: Optimization of ELISA parameters

Supplementary Figure 2: Comparison of manual and automated ELISA protocols

Supplementary Figure 3: IgG responses to the Spike S1 antigen

Supplementary Figure 4: IgA and IgM responses to Sars-CoV-2 antigens

## **SARS-CoV-2 Testing in Elective Surgery Collaborators**

### **Steering Committee**

Professor Russell Gruen, MB.BS, *PhD*, FRACS  
Dean of the ANU College of Health and Medicine, ACT, Australia.

Professor Paul Myles, MB.BS, MPH, MD, DSc, FCAI, FANZCA, FRCA, FAHMS  
Director of the Department of Anaesthesiology and Perioperative Medicine, Alfred Hospital and Monash University, Victoria, Australia.

Professor Graham Mann, MB.BS, PhD, FRACP  
Director of the John Curtin School of Medical Research, Australian National University, ACT, Australia.

Professor Allen Cheng, MB.BS, FRACP, MPH, PhD  
Director of the Infection Prevention and Healthcare Epidemiology, Alfred Hospital and Monash University, Victoria, Australia.

Dr Gary Lum, AM MB.BS, FRCPA, FACTM  
Principal Medical Advisor, Australian Government Department of Health, Canberra, ACT, Australia.

Dr Nick Coatsworth, MB.BS, MIntPH, FRACP  
Deputy Chief Medical Officer, Australian Government Department of Health, Canberra, ACT, Australia.

Dr Sue Abhary, MB.BS, PhD, FRACMA  
Senior Executive Medical Director (Safety, Quality and Medical Research), Medibank Private, Melbourne VIC, Australia

### **Statistician**

Professor Andrew Forbes, MSc, PhD  
Head, Biostatistics Unit, School of Public Health and Preventive Medicine, Monash University, Victoria, Australia.

### **Project Manager (Clinical – Alfred Hospital)**

Sophie Wallace, BHlthSc, MPH  
Department of Anaesthesiology and Perioperative Medicine, Alfred Hospital, Victoria, Australia.

### **Project Manager (ANU)**

Dr Lucy Morris, BSc(Hons), MSc(Res), PhD  
John Curtin School of Medical Research, Australian National University, ACT, Australia.

### **Site Investigators and Coordinators**

#### **New South Wales**

##### **Westmead Hospital**

- **Anaesthesiology:** Jan Dieleman

- **Surgery:** Henry Pleass
- **Infectious Diseases:** Matthew O’Sullivan
- **Research Coordinators:** Louise Cope, Eleanore Clarke Mackay

### **Royal North Shore Hospital**

- **Anaesthesiology:** Matt Doane
  - **Surgery:** Michelle Mulligan
  - **Infectious Diseases:** Archie Darbar
- Research Coordinator:** Helen Goldsmith, Julian Laurence, Vanessa Chen

### **Prince of Wales Private Hospital**

- **Anaesthesiology:** Cath Downs
- **Surgery:** Andreas Loeffler
- **Infectious Diseases:** Jeffrey Pos
- **Research Coordinator:** Kathryn Stantifort

### **South Australia**

#### **Royal Adelaide Hospital**

- **Anaesthesiology:** Thomas Painter
- **Surgery:** Peter Subramaniam
- **Infectious Diseases:** David Shaw
- **Research Coordinators:** Louise dePrinse, Kathy Heyman, Robyn Koronis

#### **Flinders Medical Centre**

- **Anaesthesiology:** Adam Badenoch, Fiona Taverner
- **Surgery:** Rob Padbury
- **Infectious Diseases:** Kelly Papanoum
- **Research Coordinator** Susan Rattigan

### **Victoria**

#### **Alfred Hospital**

- **Anaesthesiology:** Paul Myles
- **Surgery:** Wendy Brown
- **Infectious Diseases:** Allen Cheng
- **Research Coordinators:** Sophia Wallace, Ruby Han, Molly Clarris, Mayumi Ueoka

#### **Epworth Richmond**

- **Anaesthesiology:** Niki Tan
- **Surgery:** Gary Crosthwaite
- **Infectious Diseases:** Brad Gardiner
- **Research Coordinators:** Di Dawson, Jayne Damm

#### **Monash Medical Centre**

- **Anaesthesiology:** Christopher Rees
- **Surgery:** Julian Smith
- **Infectious Diseases:** Rhonda Stuart

### **Western Australia**

#### **Sir Charles Gairdner Hospital**

- **Anaesthesiology:** Dale Currigan

- **Surgery:** Jonathan Foo
- **Infectious Diseases:** Julie Hart
- **Research Coordinators:** Jessica Fisher

**St John of God Hospital Subiaco**

- **Infectious Diseases:** Prof Shirley Bowen
- **Anaesthesiology:** Tomas Corcoran
- **Research Coordinators:** Yvonne Buller, Natalie Hird

## Supplementary Materials and Methods

### *Details of SARS-CoV-2+ samples*

Sera and plasma from known positive cases obtained after provision of informed consent included 3 samples from the Diamond Princess cruise ship (collected at James Cook University: all hospitalized, collected >45 days post diagnosis), 2 samples collected at the Australian National University (from asymptomatic RNA positive individuals who had contracted SARS-CoV-2 on cruise ships), 2 samples collected at the Alfred Hospital (collected at d2 and d14 post admission) and 36 samples from Charité collected as part of a large cohort study described elsewhere (all hospitalized, samples collected during convalescence).

### *Automated ELISA protocol; normalization of ECL emission values*

After sample addition and incubation for 1 hour, plates were washed using the BioTek ELx405 plate washer (BioTek, Winooski, USA). Briefly, sample was aspirated from the wells, and the plates washed three times with 250  $\mu$ L wash buffer (0.05% Tween in PBS, Z height = 30, aspiration rate = 2, dispense rate = 7). After the final aspiration step, 100  $\mu$ L/well of detection antibody (Goat anti-Human IgG (Sigma, Castle Hill, NSW)) was dispensed into each plate using the Multidrop Combi Reagent Dispenser (ThermoFisher Scientific, Mulgrave, Australia) and sealed using an Agilent PlateLoc Thermal Microplate Sealer (Agilent, Mulgrave, Australia). Plates were then incubated at ambient (room) temperature for 1 hour. After incubation, plates were desealed with a Brooks XPeel® Automated Plate Seal Remover (Brooks Life Sciences, Chelmsford, USA), detection

antibody removed and washed five times with 250  $\mu$ L wash buffer (Z height = 30, aspiration rate = 2, dispense rate = 7). After the final wash step and aspiration, 100  $\mu$ L/well of detection reagent (prepared according to the manufacturer's instructions (Pierce, Rockford, IL, USA)) was added using the Multidrop Combi Reagent Dispenser, and the plates shaken (distance = 1 mm, speed = 10 Hz) for 5 seconds followed by 1 min incubation. Plates were then analysed using the Perkin Elmer EnVision Multimode Plate Reader (Glen Waverley, Australia) using luminescence measurement technology (instrument fitted with the Perkin Elmer EnVision luminescence detection kit, comprised of a luminescence top mirror and a luminescence 700 emission filter), 6.5mm measurement height, 1 second measurement time/well.

#### *Statistical analysis to estimate seroprevalence*

ELISA values were expressed as the Log<sub>10</sub> of the ECL emission at 700nm with background subtracted. Values on each plate were normalized relative to known standard samples. In the initial screen a further normalization step was carried out to reduce site to site variation, such that the trimmed mean (middle 95% of values) of the samples from each site was the same as the trimmed mean of the negative control samples.

For our initial estimate of seroprevalence we used all measured samples (184 negative, 43 positive and 2991 unknown samples). Earlier calculations estimated that using the positivity threshold = 1.302 for the mean RBD and N IgG values, sensitivity was 100%, and specificity was 98.91%. To adjust the raw seroprevalence value (41/3014) we used the the Rogan-Gladen correction which is derived from the formula: Proportion Positive =  $P(+)$  =  $prev * Sens + (1 - prev) * (1 - Sp)$ , where  $prev$  is the true prevalence. Rearranging this formula to solve for  $prev$  yields:

$$prev = (P(+) + Sp - 1)/(Sens + Sp - 1)$$

To get a 95% confidence interval for this estimate, we used a bootstrap: we resampled the unknown data, and for each resample, we calculate the proportion positive, to get an estimated distribution of proportion positive. The 2.5 - 97.5 quantile range is the 95% CI for the proportion positive.

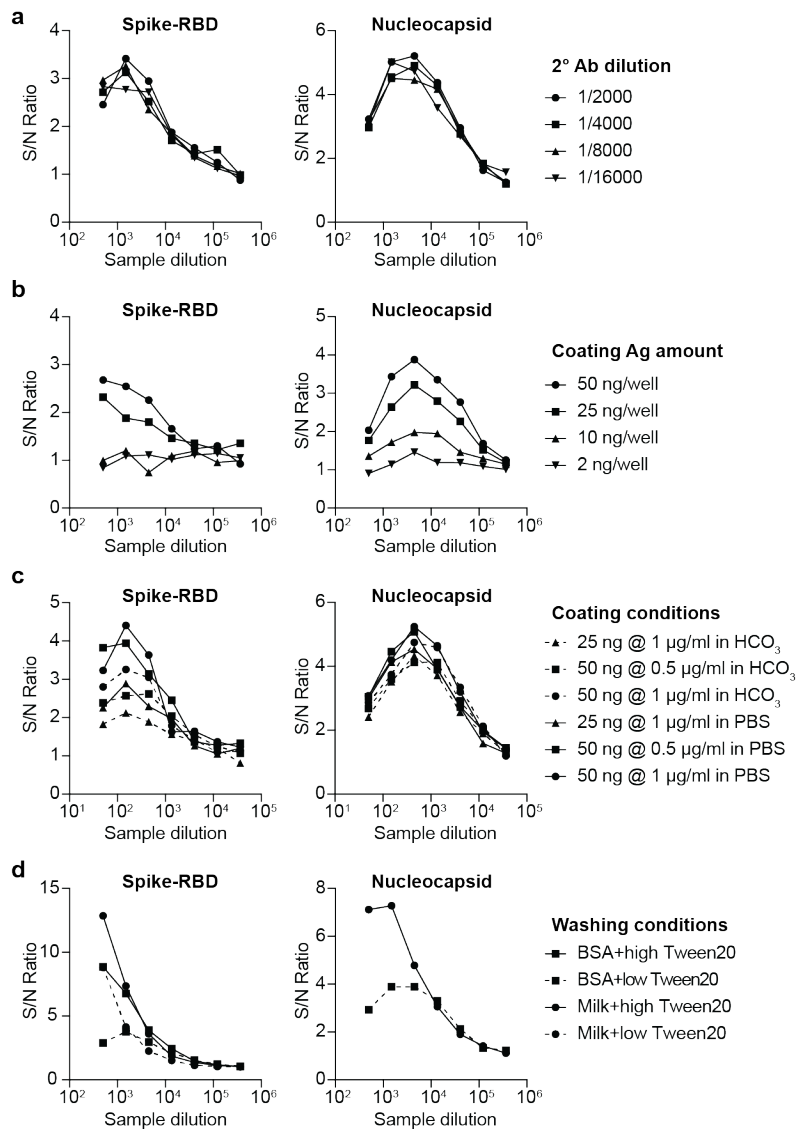
Our second analysis was based on a re-test of the top 2.7% of unknown samples from each site. We modeled the mean IgG (RBD, N) from the known samples as a mixture of normal distributions, since we found that a normal distribution was a poor fit to the positive samples. We next computed the density for the scores for positive and negative samples, using the estimates: lambda = probability, mu=mean, sigma = sd for each component. We then wanted to estimate the probability that each of the re-test samples are positive. Since we re-tested the top 2.7% of the 2991 samples, and the estimated prevalence is 0.28%, we anticipate that 10% of this sample is positive. Thus we set the prior positive probability to 0.10 and estimate the posterior probability using Bayes theorem. Equivalently, we use the relationship that the posterior odds are equal to the prior odds times the Bayes Factor, where the Bayes factor is defined as the relative frequency distribution.

**Supplementary Table 1: Optimization of ELISA parameters**

<b>Condition (other parameters)</b>	<b>S/N @ 1/150 (Spike-RBD)</b>	<b>S/N @1/150 (Nucleocapsid)</b>
<b>Dilution of 2° Ab (50ng @1 µg/ml om HCO<sub>3</sub>; BSA - low Tween)</b>		
1/2000	3.43*	5.02*
1/4000	3.13	4.55
1/8000	3.26	4.51
1/16000	2.77	5.01
<b>Coating amount (1/2000 2° Ab; HCO<sub>3</sub> coating buffer; BSA - low Tween;)</b>		
50 ng @ 1 µg/ml	2.85*	4.06*
25 ng @ 0.5 µg /ml	2.16	2.77
10 ng @ 0.2 µg /ml	1.22	1.76
2 ng @ 0.04 µg /ml	1.13	1.12
<b>Coating amount/dilution (1/2000 2° Ab; BSA - low Tween)</b>		
50 ng @ 1 µg/ml in PBS	4.41*	4.19*
50 ng @ 0.5 µg/ml in PBS	3.95	4.46
25 ng @ 1 µg/ml in PBS	2.88	4.13
50 ng @ 1 µg/ml in HCO <sub>3</sub>	3.26	3.74
50 ng @ 0.5 µg/ml in HCO <sub>3</sub>	2.57	3.60
25 ng @ 1 µg/ml in HCO <sub>3</sub>	2.12	3.52
<b>Blocking/Washing conditions (1/2000 2° Ab; 50 ng @ 1 µg/ml in PBS)</b>		
Milk – high Tween	7.36	7.27
BSA – high Tween	6.77*	ND
Milk – low Tween	4.14	ND
BSA – low Tween	3.77	3.89

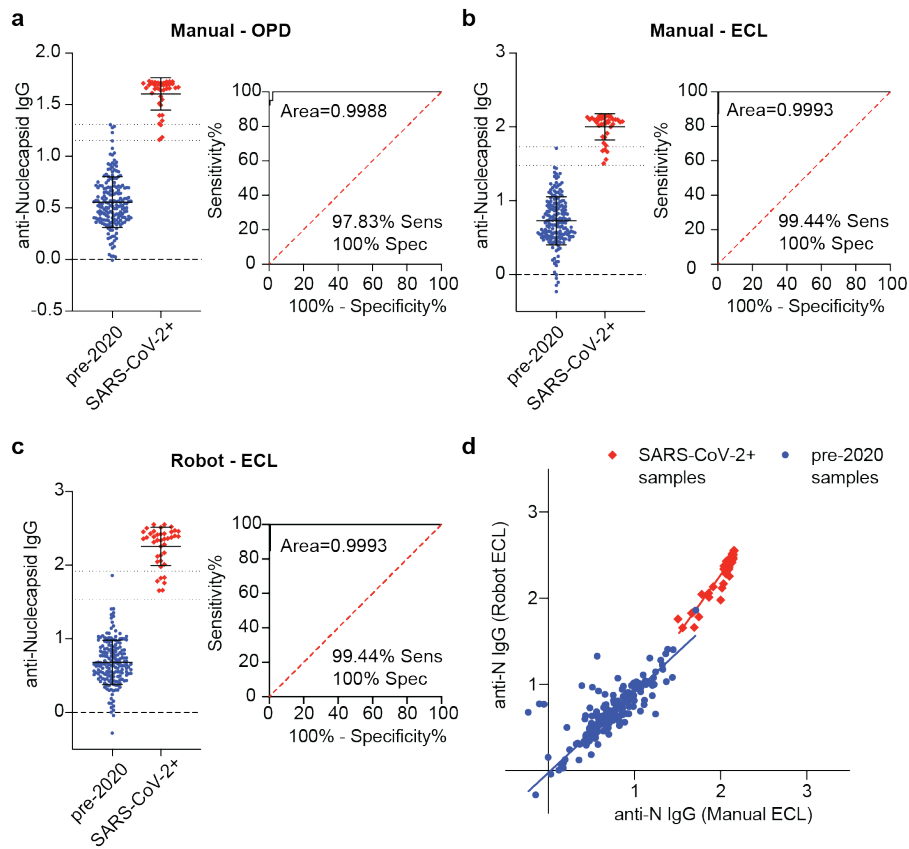


## Supplementary Figure 1



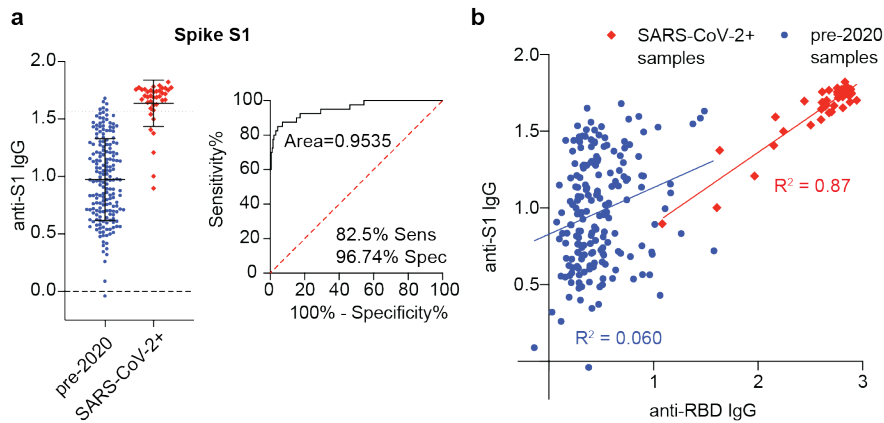
**Supplementary Figure 1: Optimization of ELISA parameters** Pools of positive and negative control sera at different dilutions were used to assay responses to the RBD and N antigens under different ELISA conditions as follows (a) secondary antibody (anti-IgG) dilution (b) coating antigen amount (c) coating conditions and (d) washing conditions. Data are expressed as the signal to noise ratio of the response to the positive and negative pools (S/N ratio) at different sample dilutions.

## Supplementary Figure 2



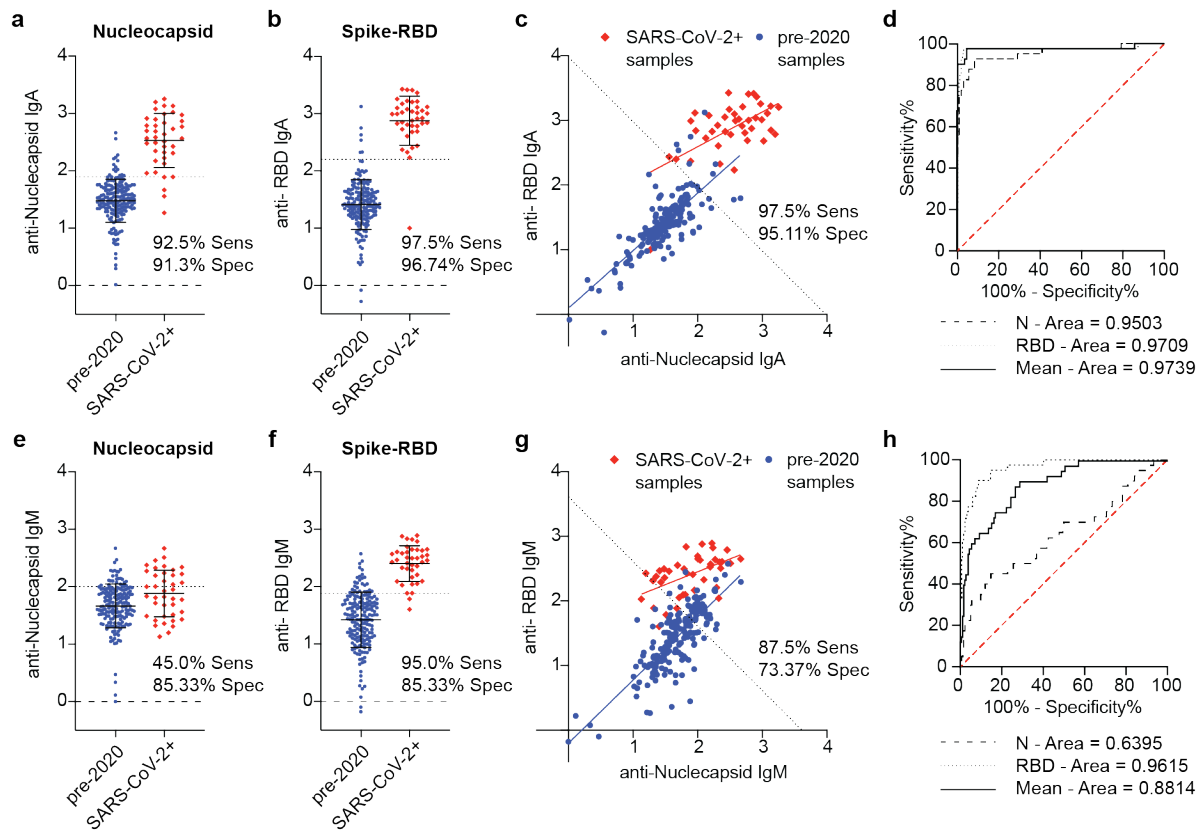
**Supplementary Figure 2: Comparison of manual and automated ELISA protocols** IgG responses to the N antigen were measured in 180 negative and 40 positive control samples either (a) using a manual ELISA with OPD detections reagent (b) manual ELISA with ECL detection reagent or (c) an automated ELISA with ECL detection reagent; individual data points, mean  $\pm$  SD, 100% sensitivity and specificity cut-offs and ROC curve for each condition shown. (d) Comparison of responses as measured manually or automatically using the ECL detection reagent; least squares regression lines shown for the positive and negative controls.

### Supplementary Figure 3



**Supplementary Figure 3: IgG responses to the Spike S1 antigen** (a) IgG responses to the S1 antigen were measured in 184 negative and 40 positive control samples; individual data points, mean  $\pm$  SD, optimal cut-off and ROC curve shown. (b) Correlation of responses to the S1 and RBD antigens among the positive and negative controls; linear regression lines for each population are shown.

## Supplementary Figure 4



**Supplementary Figure 4: IgA and IgM responses to Sars-CoV-2 antigens.** (a) IgA responses to the N antigen and (b) RBD antigen among positive and negative control samples with the optimal specificity cutoffs (dotted black lines on graph); individual data points and mean  $\pm$  SD shown. (c) Relationship between IgA responses to the N and RBD antigens among positive and negative control samples, dashed lines represent the optimal cutoff derived from ROC analysis for the mean of the responses to the two antigens. (d) ROC curves for the sensitivity and specificity of IgA assays to the RBD, N and the mean of the responses to the two antigens. (e) IgM responses to the N antigen and (f) RBD antigen among positive and negative control samples with the optimal specificity cutoffs (dotted black lines on graph); individual data points and mean  $\pm$  SD. (g) Relationship between IgM responses to the N and RBD antigens among positive and negative control samples, dashed lines represent the optimal cutoff derived from ROC analysis for the mean of the responses to the two antigens. (h) ROC curves for the sensitivity and specificity of IgM assays to the RBD, N and the mean of the responses to the two antigens.