

Figure S1. Pathogenicity scores of missense variants in *RFX3*, *RFX4*, and *RFX7*.

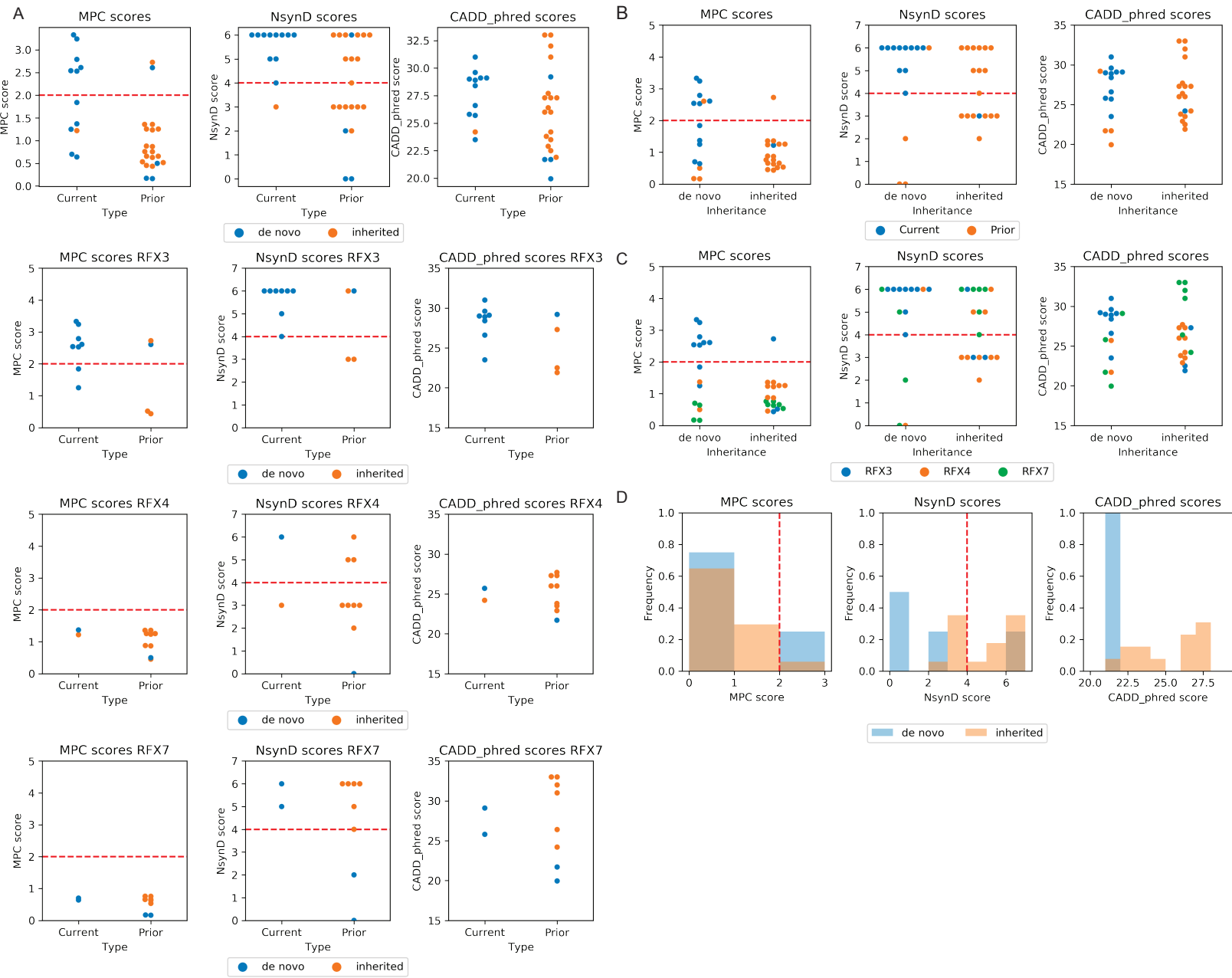
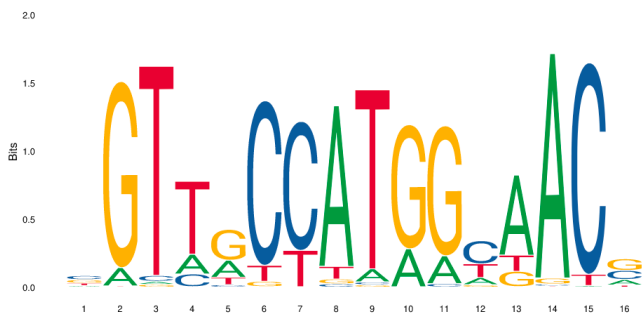


Figure S3. RFX3 and RFX4 binding motifs are present in ASD-associated gene promoters.

A

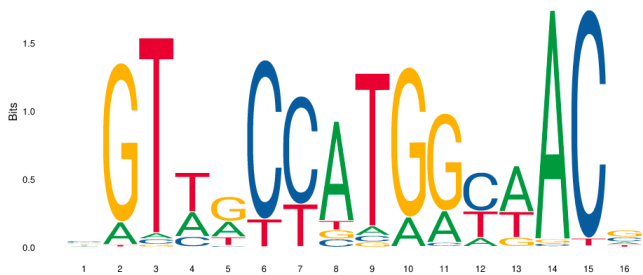


B

RFX3 Motif Occurrences

Gene Symbol	Start	Stop	p-value	q-value	Matched Sequence
<i>AP2S1</i>	1223	1238	2.39E-08	0.00318	GGTCGCCATGGTAACG
<i>KDM6B</i>	854	869	2.43E-08	0.00318	GGTTGCCATGGAAACA
<i>ANK2</i>	941	956	2.08E-07	0.0174	TGCTGCCATGGCAACG
<i>MYT1L</i>	720	735	7.63E-07	0.0361	GGTTGCCATGGCCACC
<i>NONO</i>	693	708	8.63E-07	0.0361	GGTTACCATGGAAATG

C

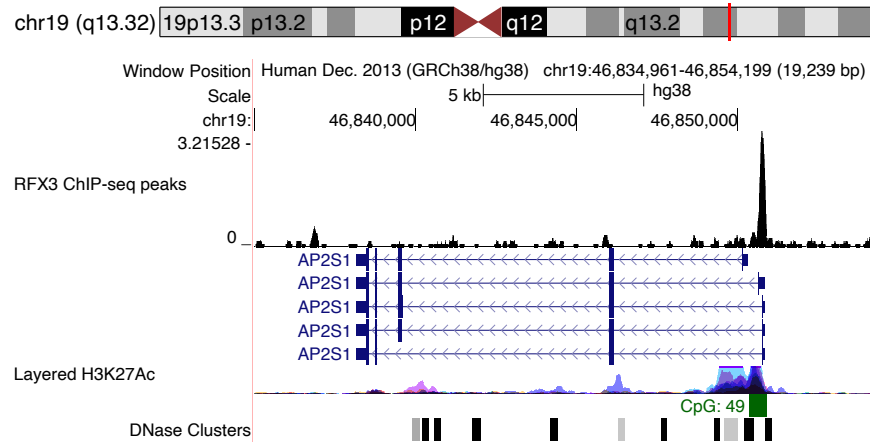


D

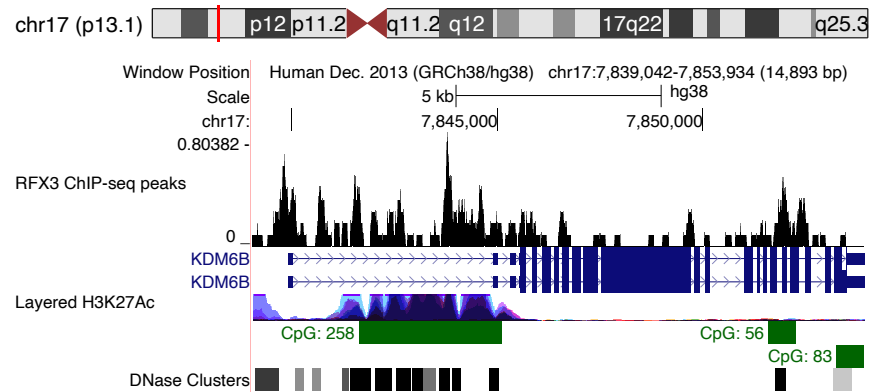
RFX4 Motif Occurrences

Gene Symbol	Start	Stop	p-value	q-value	Matched Sequence
<i>AP2S1</i>	1223	1238	2.94E-08	0.00736	GGTCGCCATGGTAACG
<i>KDM6B</i>	854	869	1.51E-07	0.0158	GGTTGCCATGGAAACA
<i>ANK2</i>	941	956	5.16E-07	0.0431	TGCTGCCATGGCAACG
<i>MYT1L</i>	720	735	1.10E-06	0.0646	GGTTGCCATGGCCACC

E



F



G

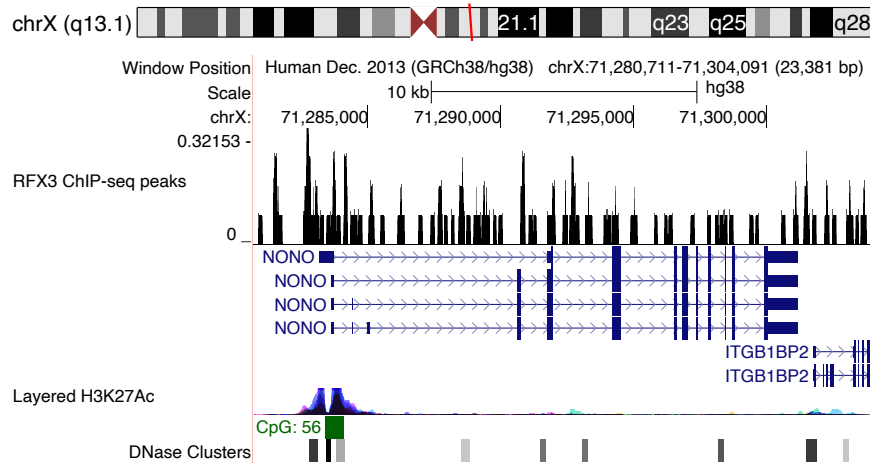


Figure S4. Customized KEGG enrichment analysis of RFX functional binding sites.

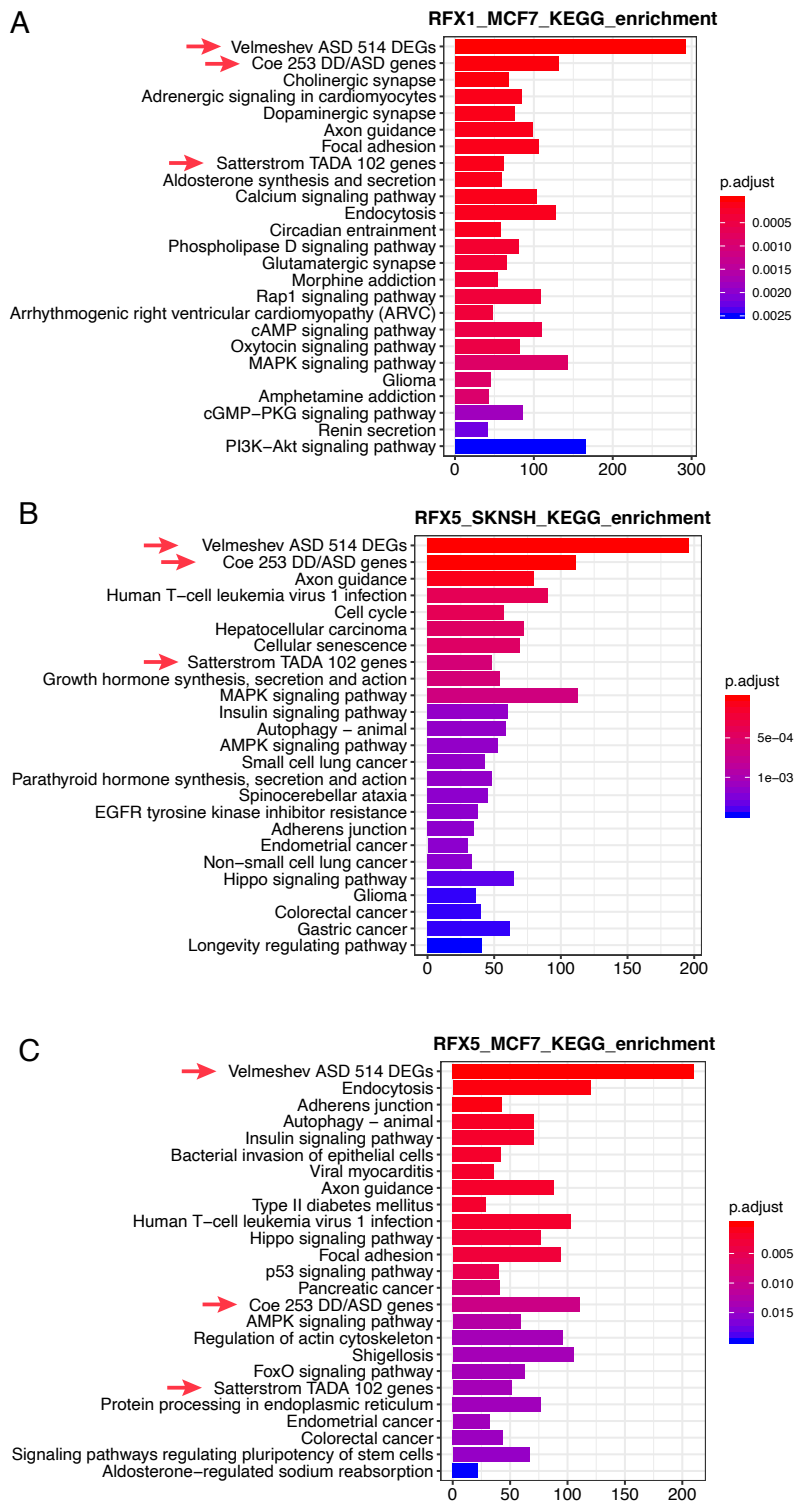


Figure S5. Correlation of enrichment significance in ASD gene sets with *RFX* expression level.

