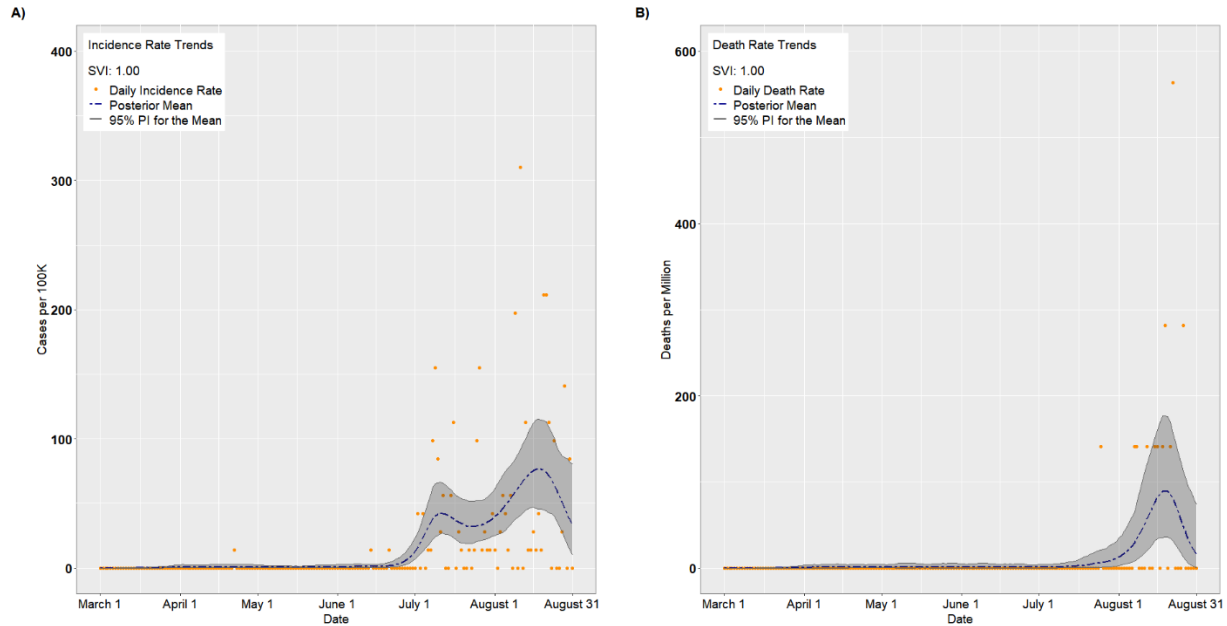
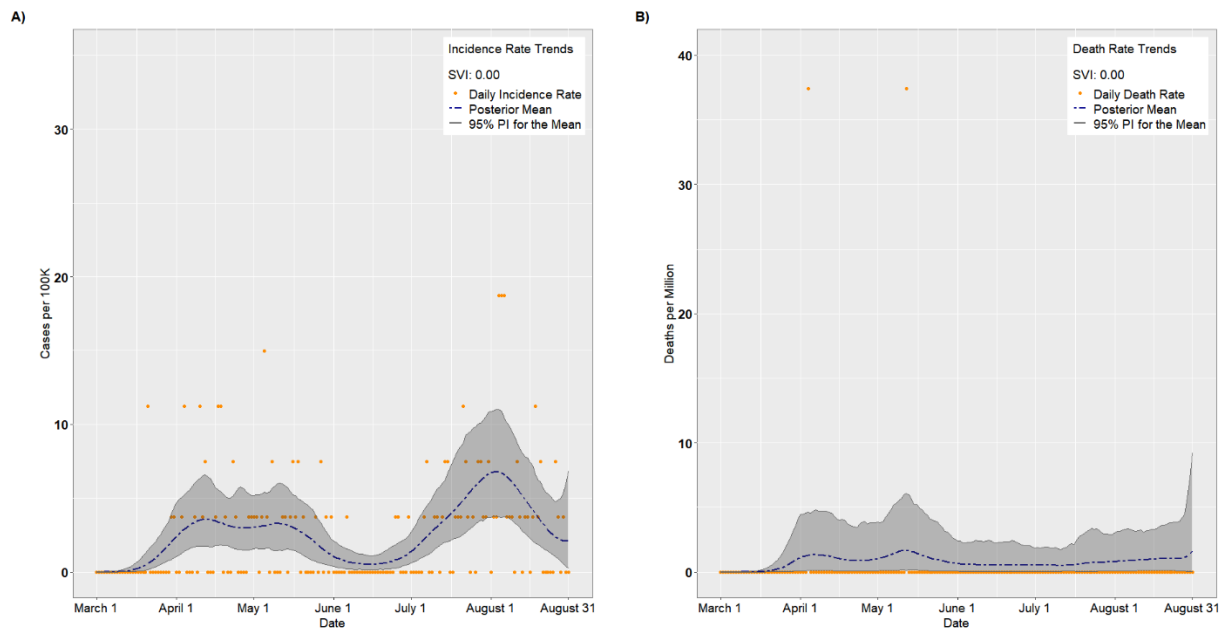


## Supporting Information for “Spatial and temporal trends in social vulnerability and COVID-19 incidence and death rates in the United States”

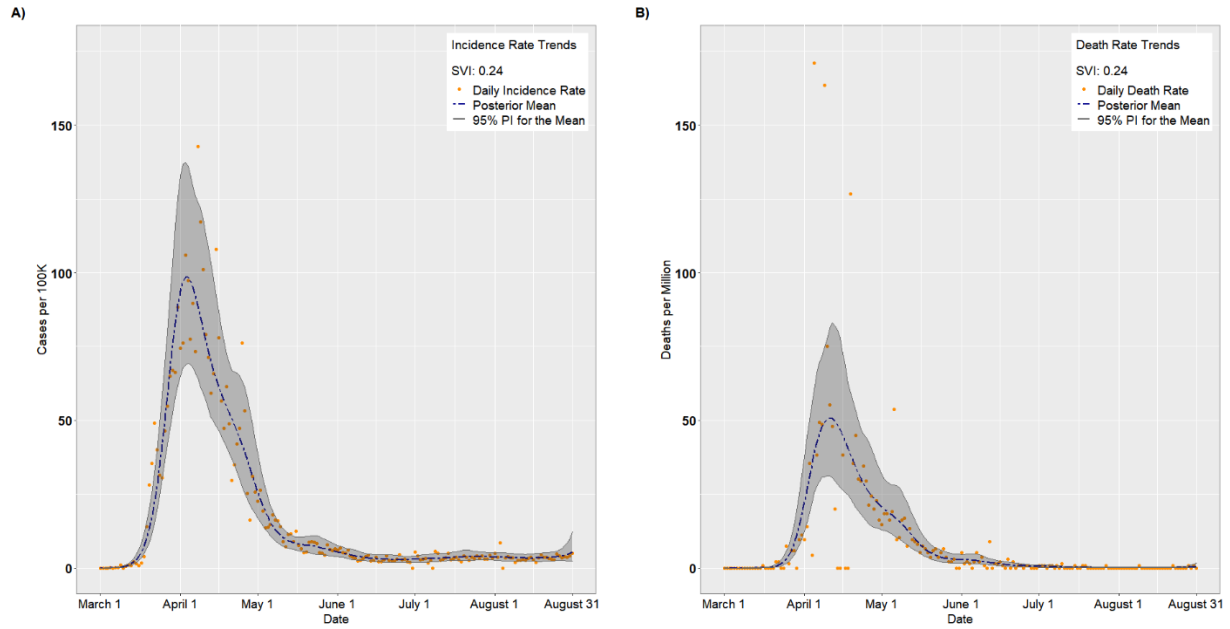
**Figure S1.** Per capita incidence (A) and death rates (B) for Brooks County, Texas (population = 7,093; overall SVI score = 1.00)



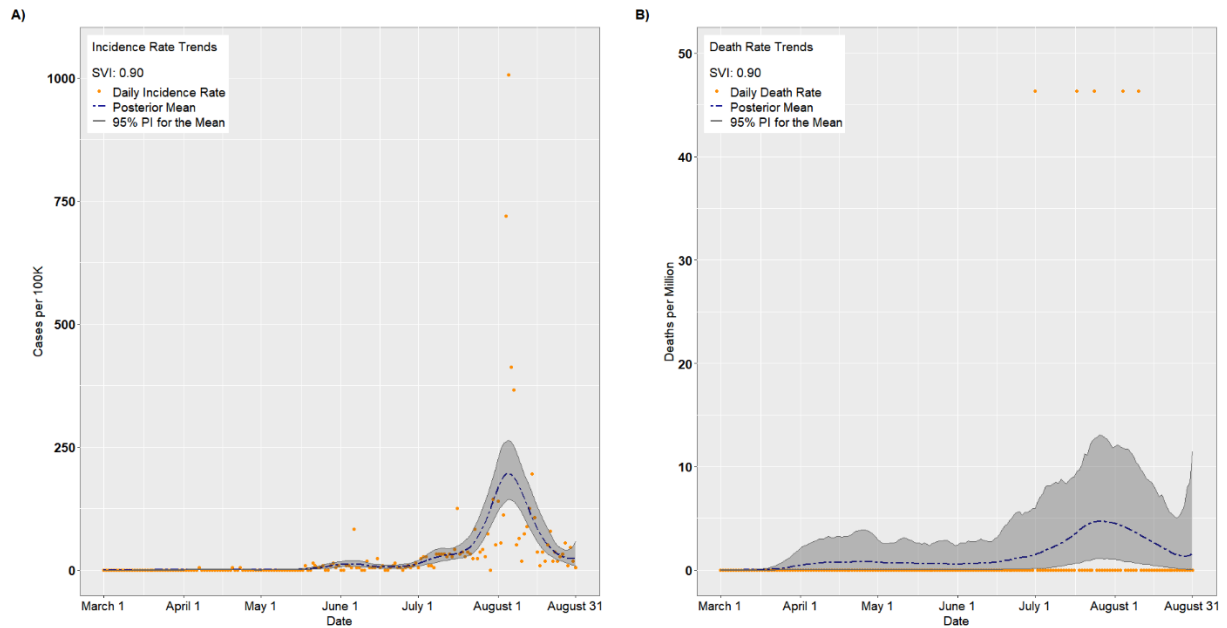
**Figure S2.** Per capita incidence (A) and death rates (B) for Elbert County, Colorado (population = 26,729; overall SVI score = 0.00)



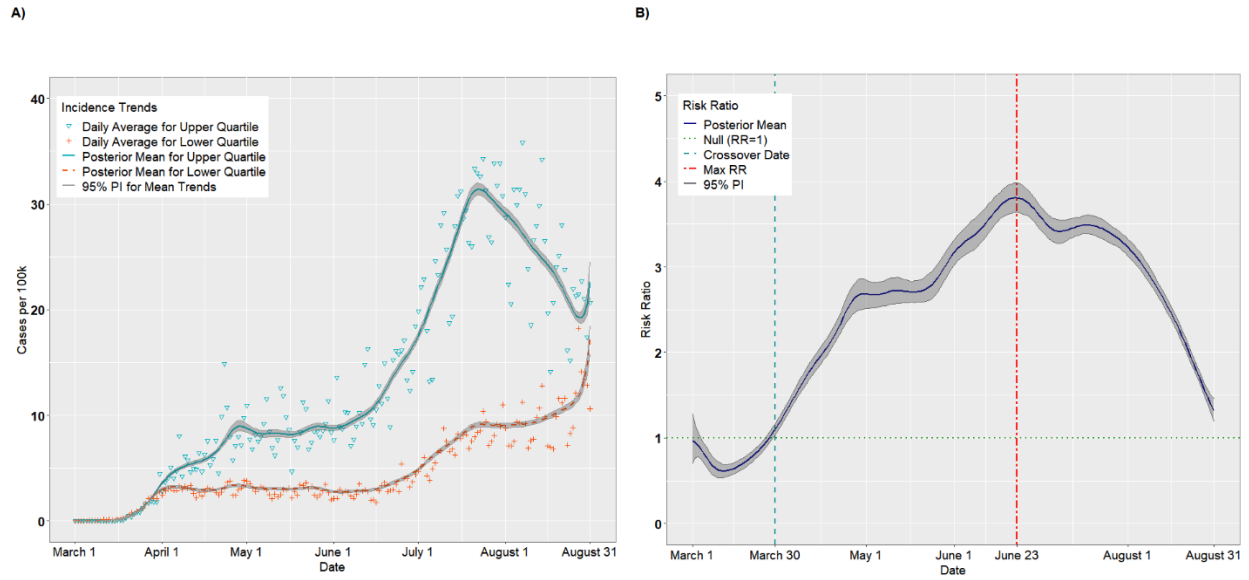
**Figure S3.** Per capita incidence (A) and death rates (B) for Nassau County, New York (population = 1,356,924; overall SVI score = 0.24)



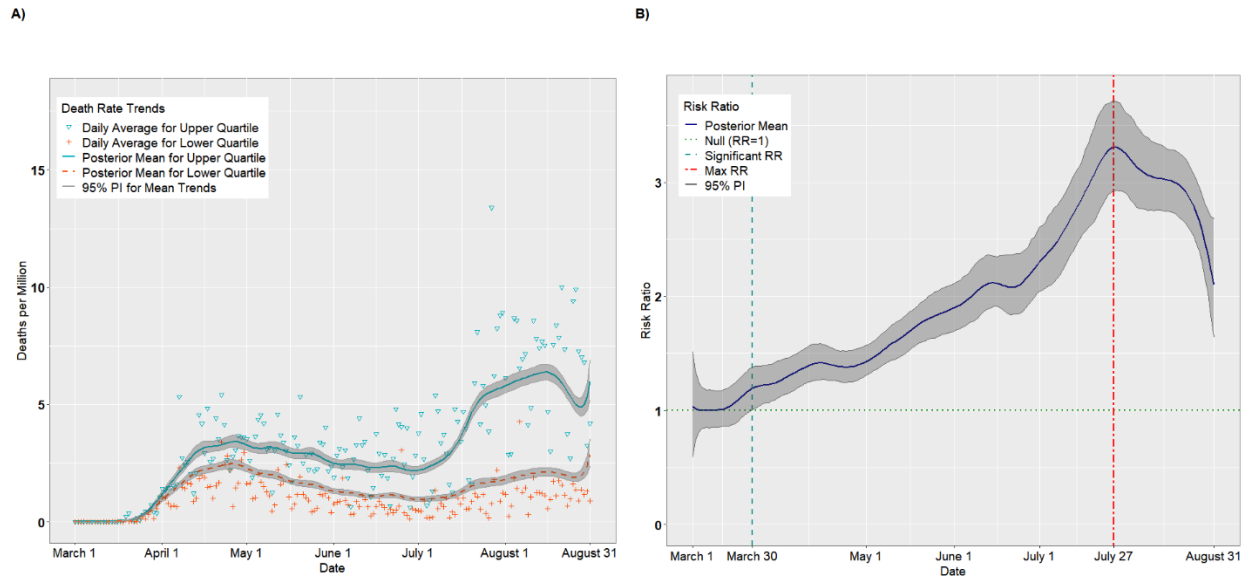
**Figure S4.** Per capita incidence (A) and death rates (B) for Taylor County, Florida (population = 21,569; overall SVI score = 0.90)



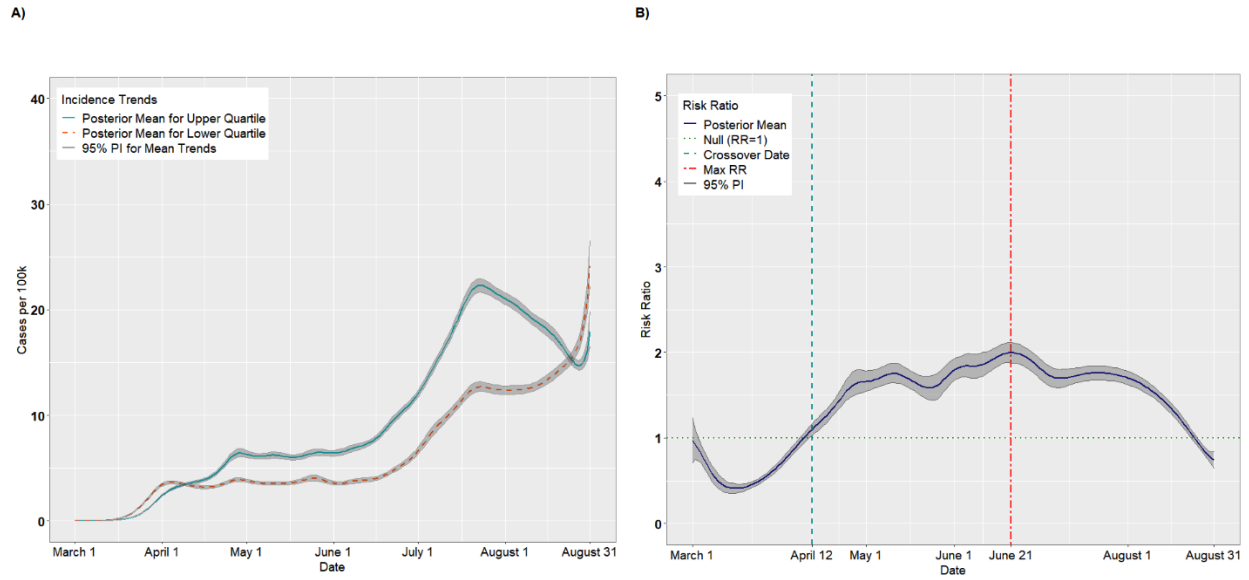
**Figure S5.** Per capita incidence (A) and risk ratios (B) comparing the upper and lower quartiles of overall SVI using Johns Hopkins data



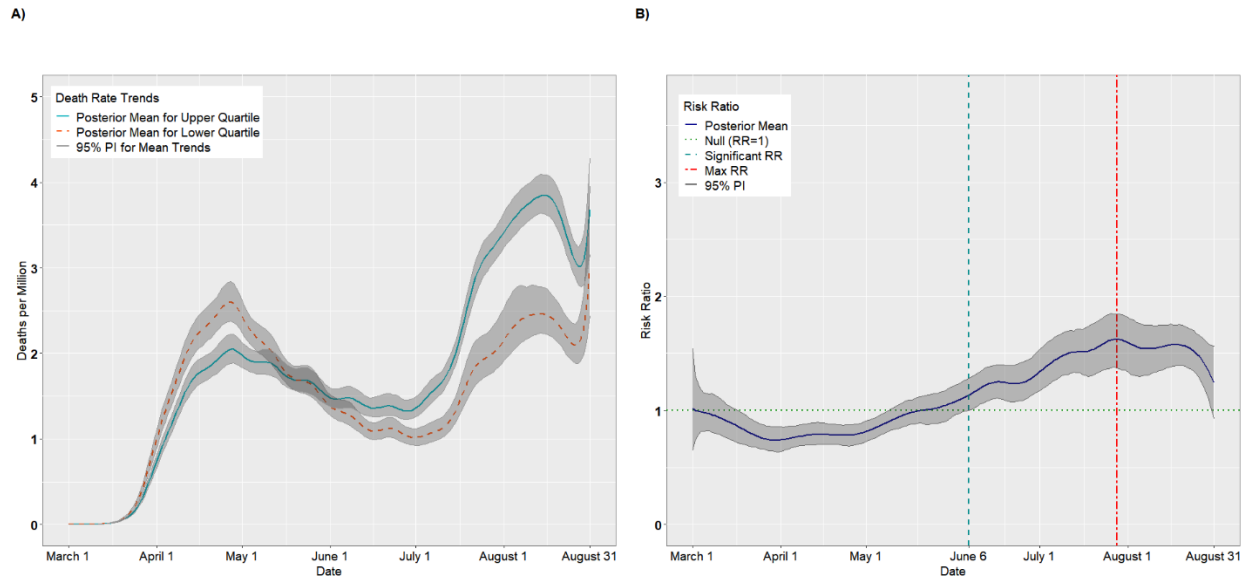
**Figure S6.** Per capita death rates (A) and risk ratios (B) comparing the upper and lower quartiles of overall SVI using Johns Hopkins data



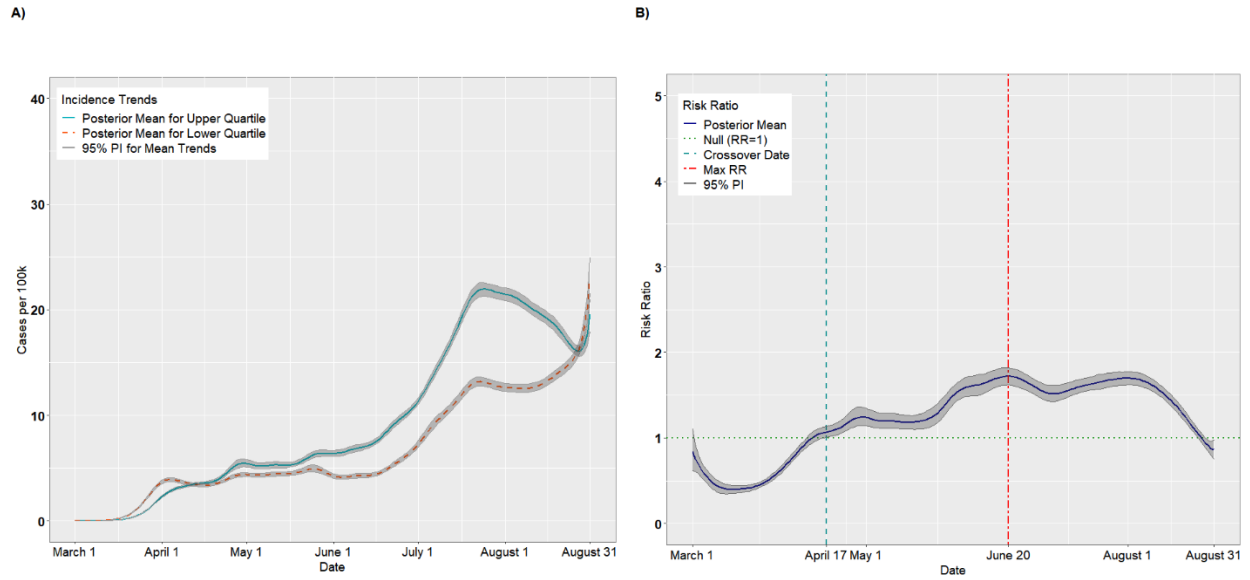
**Figure S7.** Per capita incidence (A) and risk ratios (B) comparing the upper and lower quartiles of overall SVI in the adjusted analysis



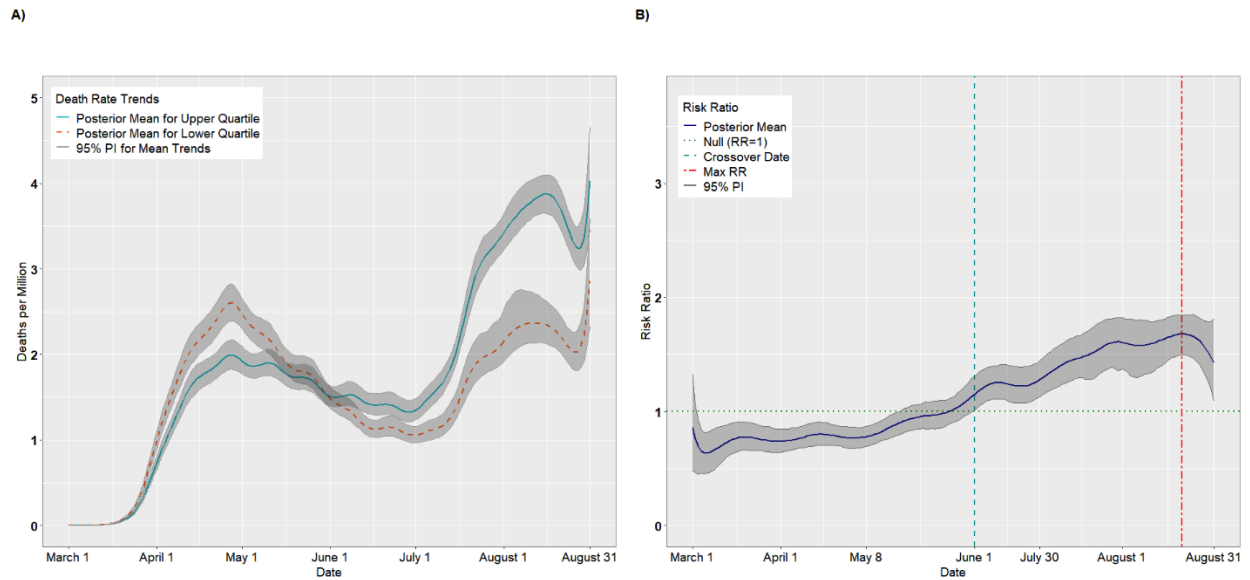
**Figure S8.** Per capita death rates (A) and risk ratios (B) comparing the upper and lower quartiles of overall SVI in the adjusted analysis



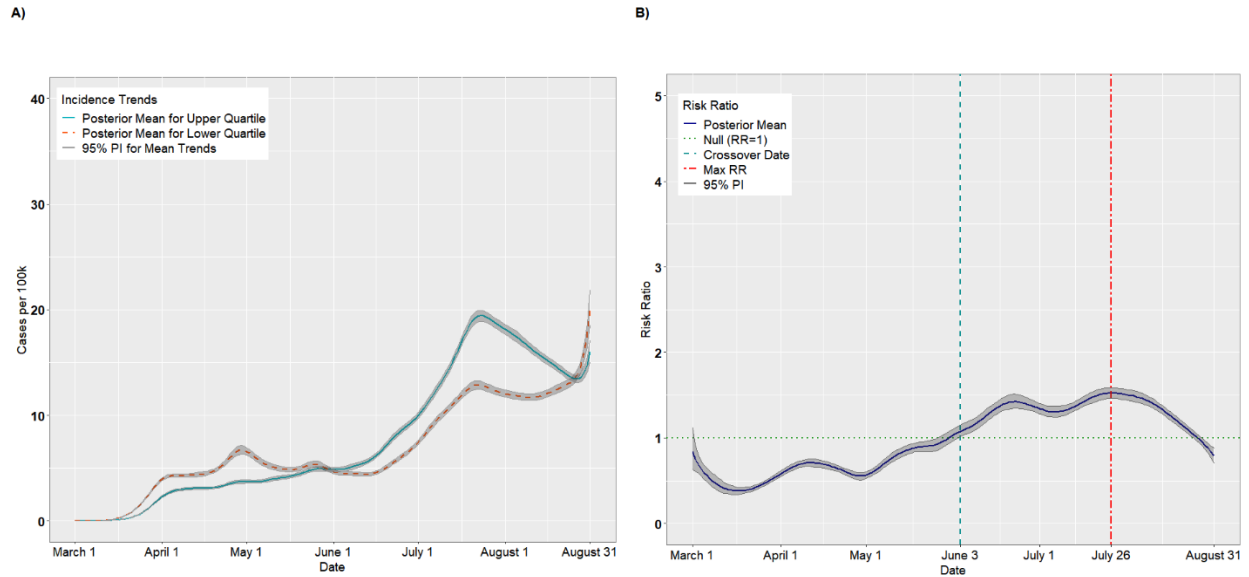
**Figure S9.** Per capita incidence (A) and risk ratios (B) comparing the upper to lower quartiles of the SVI Socioeconomic Status theme for the reference group in the adjusted analysis



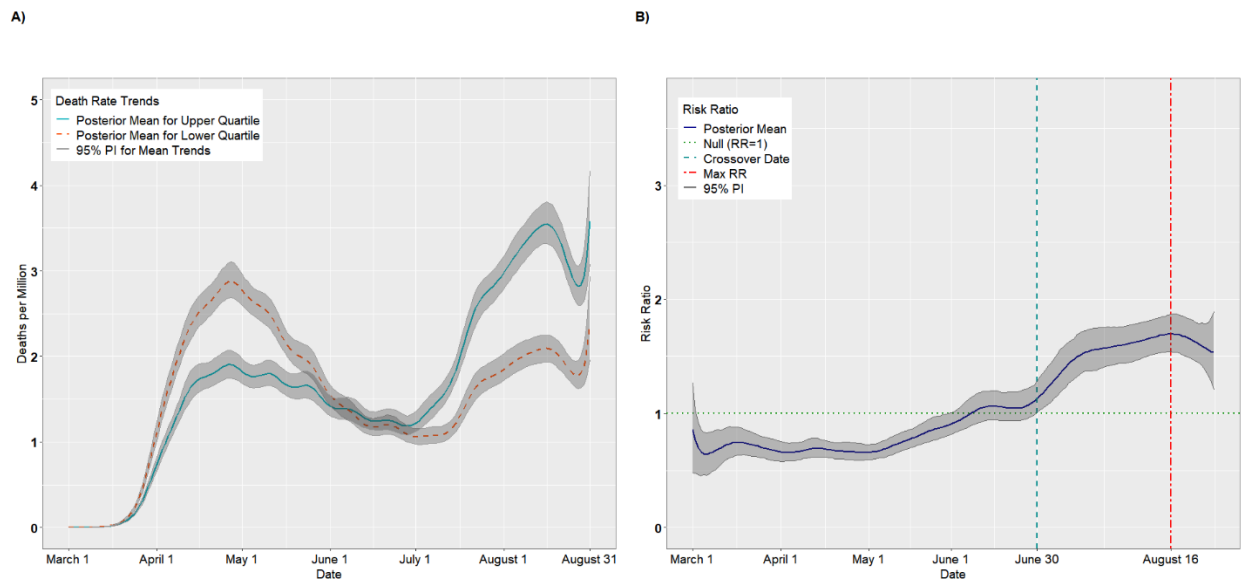
**Figure S10.** Per capita death rates (A) and risk ratios (B) comparing the upper to lower quartiles of the SVI Socioeconomic Status theme in the adjusted analysis



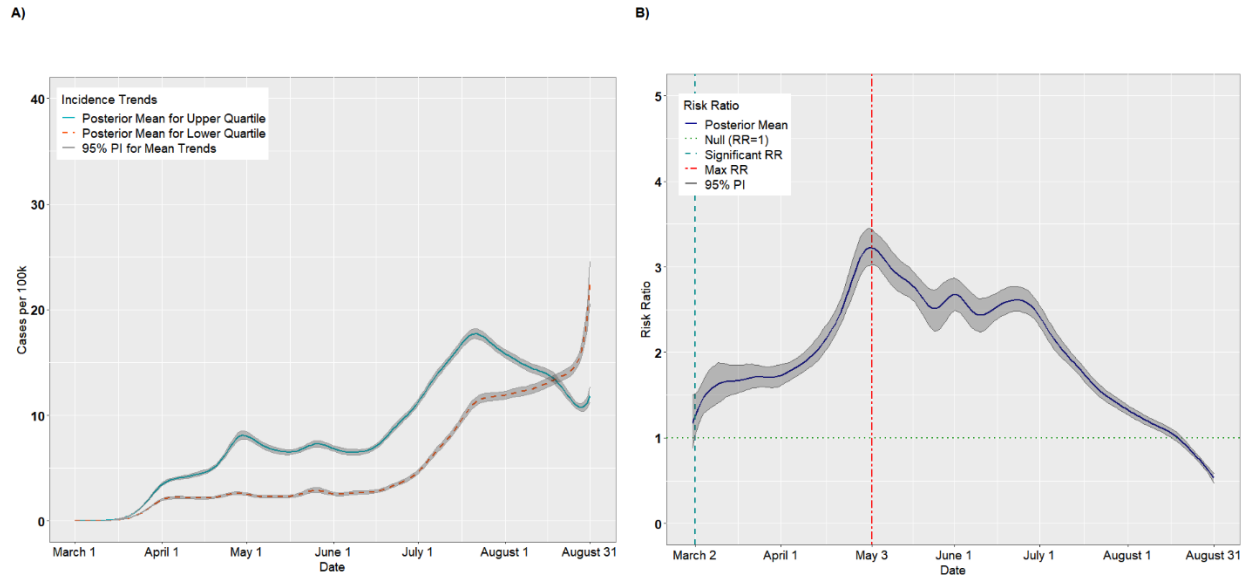
**Figure S11.** Per capita incidence (A) and risk ratios (B) comparing the upper to lower quartiles of the SVI Household Composition theme in the adjusted analysis



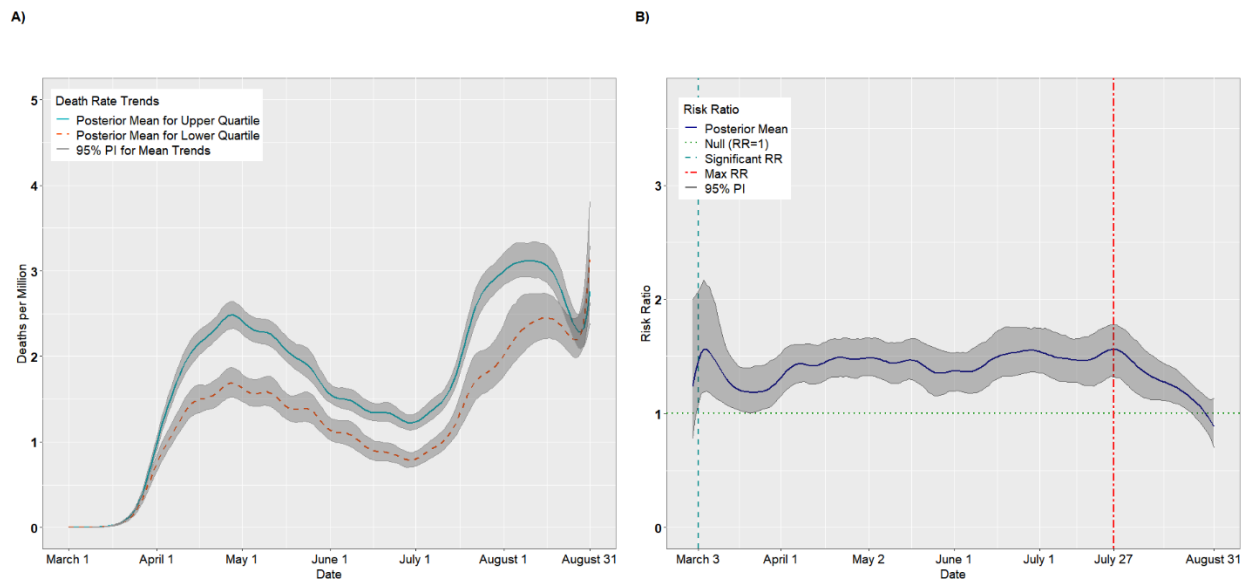
**Figure S12.** Per capita death rates (A) and risk ratios (B) comparing the upper to lower quartiles of the SVI Household Composition theme in the adjusted analysis



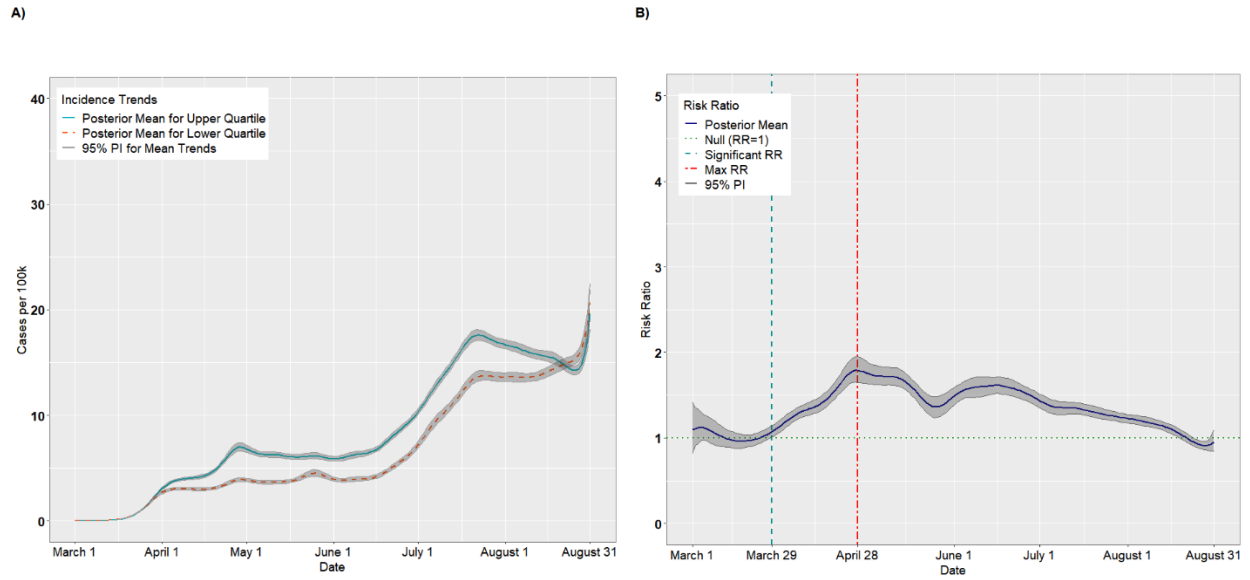
**Figure S13.** Per capita incidence (A) and risk ratios (B) comparing the upper to lower quartiles of the SVI Race/Ethnicity/Language theme in the adjusted analysis



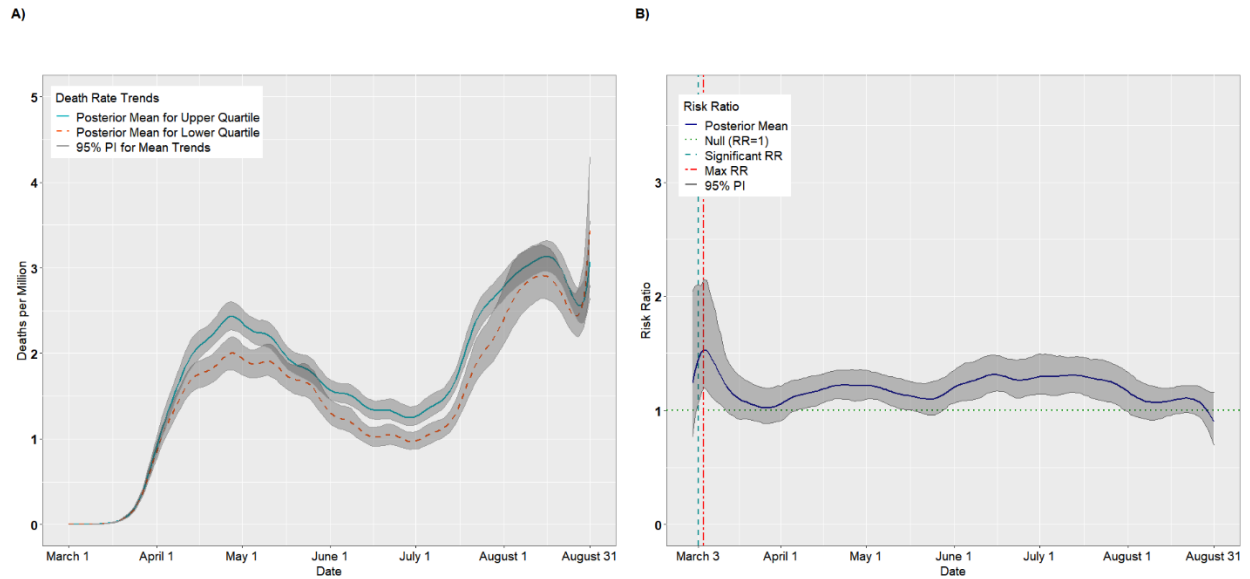
**Figure S14.** Per capita death rates (A) and risk ratios (B) comparing the upper to lower quartiles of the SVI Race/Ethnicity/Language theme in the adjusted analysis



**Figure S15.** Per capita incidence (A) and risk ratios (B) comparing the upper to lower quartiles of the SVI Housing/Transportation theme in the adjusted analysis



**Figure S16.** Per capita death rates (A) and risk ratios (B) comparing the upper to lower quartiles of the SVI Housing/Transportation theme in the adjusted analysis





**Table S1.** Top 10 counties with the highest average incidence from the unadjusted analysis for the week of August 24 – August 31, 2020

| <b>County</b>  | <b>State</b> |
|----------------|--------------|
| Wayne          | Tennessee    |
| Webster        | Iowa         |
| Chattahoochee  | Georgia      |
| Lincoln        | Arkansas     |
| East Feliciana | Louisiana    |
| Clay           | South Dakota |
| Radford        | Virginia     |
| Rosebud        | Montana      |
| Issaquena      | Mississippi  |
| Lafayette      | Florida      |

**Table S2.** Top 10 counties with the highest average incidence from the adjusted analysis for the week of August 24 – August 31, 2020

| <b>County</b>  | <b>State</b> |
|----------------|--------------|
| Rosebud        | Montana      |
| Wayne          | Tennessee    |
| Webster        | Iowa         |
| East Feliciana | Louisiana    |
| Clay           | South Dakota |
| Lafayette      | Florida      |
| Cluster        | South Dakota |
| Lincoln        | Arkansas     |
| Potter         | South Dakota |
| Van Buren      | Iowa         |

**Table S3.** Top 10 counties with the highest average death rate from the unadjusted analysis for the week of August 24 – August 31, 2020

| <b>County</b> | <b>State</b> |
|---------------|--------------|
| Crenshaw      | Alabama      |
| Tishomingo    | Mississippi  |
| Winnebago     | Iowa         |
| Brooks        | Texas        |
| Montgomery    | Mississippi  |
| Shoshone      | Idaho        |
| Starr         | Texas        |
| Laurens       | Georgia      |
| Val Verde     | Texas        |
| Wilkinson     | Georgia      |

**Table S4.** Top 10 counties with the highest average death rate from the adjusted analysis for the week of August 24 – August 31, 2020

| <b>County</b> | <b>State</b> |
|---------------|--------------|
| Winnebago     | Iowa         |
| Crenshaw      | Alabama      |
| Tishomingo    | Mississippi  |
| Shoshone      | Idaho        |
| Knox          | Texas        |
| Lewis         | Kentucky     |
| Monroe        | Georgia      |
| Montgomery    | Mississippi  |
| Lafayette     | Florida      |
| Wilkinson     | Georgia      |