

The risk of introducing SARS-CoV-2 to the UK via international travel in August 2020

Rachel A. Taylor^{1*}, Catherine McCarthy^{1*}, Virag Patel¹, Ruth Moir², Louise A Kelly^{1,3}, Emma L Snary¹

**Joint first authorship*

1. Department of Epidemiological Sciences, Animal and Plant Health Agency (APHA), UK
2. Epidemiology and Risk Policy Advice, Animal and Plant Health Agency (APHA), UK
3. Department of Mathematics and Statistics, University of Strathclyde, Glasgow, UK

Materials and Methods

Model framework

A framework for assessing the expected number of (infectious) cases arriving into international airports is presented in Figure S 1. The model has been parameterised with UK data, but the framework is generic and can be applied to any country. For each airport-country route combination, we run 1000 simulations to assess the expected number of cases booked onto the flight, the expected number of cases who arrive at the exit airport to travel (i.e. they have chosen to travel even though they may be displaying clinical signs), those who are detected by origin-airport exit detection measures, and those who are detected at the entry to UK airports.

Each individual traveller is assigned to be either infected or susceptible, based on the probabilities of acquiring infection whilst on the trip or in their home country. In order to calculate their likelihood of having symptoms and being detectable by different measures, the model considers sub-groups of cases all of whom have the same number of days since infection.

We outline the method for each UK airport-country combination, by first calculating the proportion of non-UK travellers to UK travellers on the flight. The number of non-UK travellers, $V_{nonUK}(a, c)$, on flights from country c to airport a is given by

$$V_{nonUK}(a, c) \sim Bin(V(a, c), p_{nonUK}),$$

where $V(a, c)$ is the total number of passengers on flights from country c to airport a and p_{nonUK} is the proportion of non-UK to UK travellers. Thus the number of UK travellers, $V_{UK}(a, c)$, on flights from country c to airport a is given by:

$$V_{UK}(a, c) = V(a, c) - V_{nonUK}(a, c).$$

We next calculate the number of cases for non-UK and UK travellers who are infected before their flight. Due to their different likelihoods of being infected, as outlined above, we consider non-UK and UK travellers separately. For non-UK travellers, the probability of being infected prior to the flight is based on the prevalence in country c , $\rho(c)$ [1]. Hence, the number of infected non-UK travellers, $I_{nonUK}(a, c)$, on flights from country c to airport a is given by:

$$I_{nonUK}(a, c) \sim Bin(V_{nonUK}(a, c), \rho(c)).$$

For UK travellers we consider two options for acquiring SARS-CoV-2 before their flight back to the UK – the UK traveller was infected in the UK before they left the UK on their trip, or the traveller was infected while on their trip in country c . For the former, the probability of being infected is the prevalence in the UK, $\rho(UK)$. For the latter, the probability of being infected is assumed to be the

prevalence in country c , $\rho(c)$ [1], due to the high uncertainties in data on transmission and contact rates in each country and the many different contact structures possible for UK travellers depending on their type of trip. Therefore, the number of cases who were infected before their trip $I_{UKbefore}(a, c)$, or during their trip, $I_{UKtrip}(a, c)$, on flights from country c to airport a is given by:

$$I_{UKbefore}(a, c) \sim \text{Bin}(V_{UK}(a, c), \rho(UK))$$

$$I_{UKtrip}(a, c) \sim \text{Bin}(V_{UK}(a, c) - I_{UKbefore}(a, c), \rho(c)),$$

where we subtract the number of cases who were infected before their trip from the total number of UK travellers in order to have the number of UK travellers who are able to be infected (susceptible) on their trip.

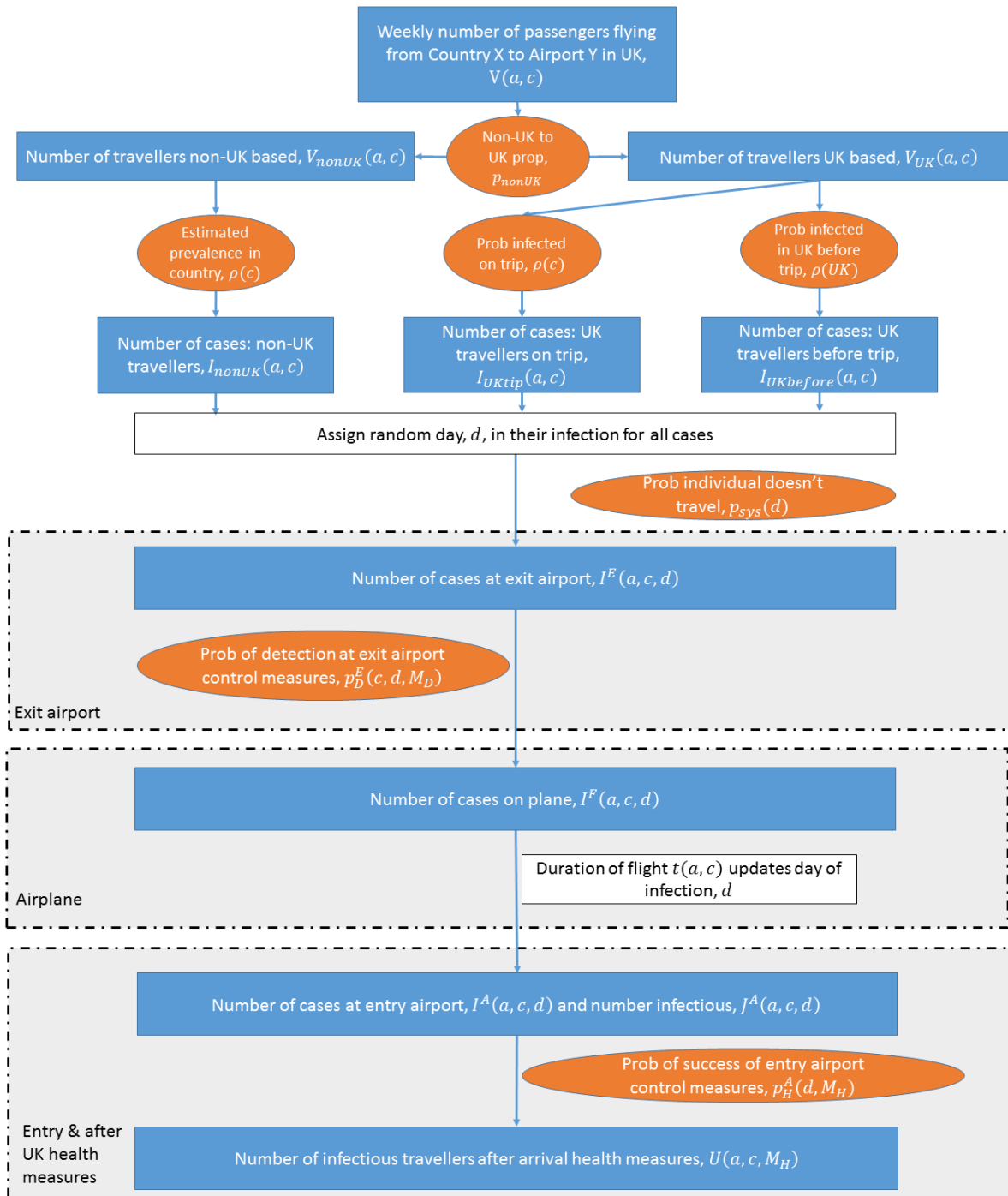


Figure S 1: A framework for estimating the number of infected travellers arriving at each airport in the UK. The model has been parameterized using UK data, but the framework is generic and could be applied to any country.

All of the following probabilities of the model are based on the day of infection that each traveller is on, since presence or absence of symptoms, severity of symptoms, infectivity, and hence ability to detect disease by different detection methods, are all dependent on the status of the individual in their disease progression. The process for assigning each traveller to a different day of infection, limited at 30 days, is provided below, but this process allows us to group all the cases into sub-groups based on days. For example, for the non-UK travellers we have

$$I_{nonUK}(a, c) = \sum_{d=0}^{30} I_{nonUK}(a, c, d),$$

where d is the day during the disease progression each traveller is on, and $I_{nonUK}(a, c, d)$ is the number of non-UK cases on day d and on flights from country c to airport a . For UK travellers, the calculation of date of infection is dependent on whether they were infected before or during their trip and their trip duration, and therefore we needed to keep the three traveller types ($I_{nonUK}(a, c)$, $I_{UKbefore}(a, c)$, $I_{UKtrip}(a, c)$) separate. However, after this point in the model framework, we only need to consider the total number of cases on each day of infection on flights from country c to airport a , $I(a, c, d)$, which is defined as:

$$I(a, c, d) = I_{nonUK}(a, c, d) + I_{UKbefore}(a, c, d) + I_{UKtrip}(a, c, d)$$

Given that we have calculated how many cases there are on each day of the disease progression, we calculate the probability, $p_{sys}(d)$, that a case will not travel due to their symptoms of COVID-19. This probability is based on the timing and probability of having severe symptoms of COVID-19 (see Probability too sick to travel section). The probability is also dependent on day d so that, for example, cases on day 1 of their disease are more likely to still travel than those later on in their disease. Therefore, the number of cases who chose to travel as planned on the flight from country c to airport a on day d , $I^E(a, c, d)$ is calculated as

$$I^E(a, c, d) \sim Bin(I(a, c, d), 1 - p_{sys}(d)),$$

where we use the superscript E to indicate that these are travellers who have arrived at the exit airport in country c . We assume that any UK travellers who were infected before their trip were all well enough to travel on their flight to country c and it is only on the return journey that they may choose not to travel. The next step in the framework is calculating how many of the cases are successfully detected at their exit airport due to detection measures in place. We use country-specific data for the top 25 countries as to which detection measures are in place and the probability of detection is determined both by the detection method and the day of infection (see below). For each traveller j in $I^E(a, c, d)$, the model estimates whether they will be detected by any of the exit detection measures, M_D , by using

$$\mathbb{I}_D^j(c, d) = \begin{cases} 1 & \text{if } Bin(1, p_D^E(c, d, M_D)) = 1 \text{ for any } M_D \\ 0 & \text{else} \end{cases}$$

where $p_D^E(c, d, M_D)$ is the probability of detection by measure M_D in the exit airport in country c for cases on day d of their infection. Thus the number of cases detected at the exit airport in country c on day d flying to airport a , $D^E(a, c, d)$, is therefore given by

$$D^E(a, c, d) = \sum_j \mathbb{I}_D^j(c, d),$$

where we are summing over all the cases on day d of their infection. Therefore, the number of cases who are not detected at the exit airport, and therefore will fly and be infected on the airplane, $I^F(a, c, d)$, with subscript F to indicate they are on the flight, is calculated as

$$I^F(a, c, d) = I^E(a, c, d) - D^E(a, c, d).$$

It is possible that travellers have a change in their disease status during the flight e.g. they start to develop symptoms during the journey. Therefore, we update the day of infection based on the proportion of a day that the flight journey lasts. All flight durations are estimated to be less than 24 hours, therefore we use $t(a, c)$ for the proportion of travellers that would move into their next day of infection, where $t(a, c)$ is measured as the proportion of one day that a flight lasts. That is, a proportion of $I^F(a, c, d)$ on day d , namely,

$$t(a, c) * I^F(a, c, d),$$

move into the category $I^A(a, c, d + 1)$, and this is repeated for each day. We use the superscript A to indicate that these are now the number of infected travellers arriving into each UK airport. We summarise this as one of our key outputs listed above, by country and UK airport:

$$I^A(a, c) = \sum_{d=0}^{30} I^A(a, c, d).$$

As stated, we are interested in the number of these cases who pose a risk of onward transmission due to their ability to transmit SARS-CoV-2, namely the infectious travellers. We estimate the number of infectious travellers, $J^A(a, c, d)$, on each day, d , where the superscript A once again indicates this is the number of infectious travellers on arrival to UK, by considering the probability of being infectious on each day, $p_{inf}(d)$,

$$J^A(a, c, d) \sim \text{Bin}(I^A(a, c, d), p_{inf}(d)).$$

Lastly, we assess the success of different potential health control measures when arriving at UK airports in reducing the potential risk of onward transmission by infectious travellers. We do not consider the potential risk that will still arise when complying with a health control measure (e.g. due to travelling on public transport to a final destination for self-isolation). This is calculated similarly to the exit detection measures above but uses 7 potential health control measures. We consider each measure separately to assess their effectiveness. However, the process for calculating the success of double-testing is slightly different and explained separately below. The number of infectious travellers, on day d , who are no longer a risk after their health control measure has been implemented, for any of the 6 remaining health control measures M_H , $D^A(a, c, d, M_H)$, is given by

$$D^A(a, c, d, M_H) \sim \text{Bin}(J^A(a, c, d), p_H(d, M_H)),$$

where $p_H(d, M_H)$ is the probability of a health control measure being successful for infectious travellers on day d of their infection based on measure M_H . We summarise this over all days to have the total number of infectious travellers who are no longer a risk after entry health measure, M_H , $D^A(a, c, M_H)$, as

$$D^A(a, c, M_H) = \sum_{d=0}^{30} D^A(a, c, d, M_H).$$

Therefore, the number of infectious travellers who are undetected after the health measure is completed, and therefore could potentially infect susceptible people in the UK, $U(a, c, M_H)$, is calculated as

$$U(a, c, M_H) = I^A(a, c) - D^A(a, c, M_H),$$

where

$$I^A(a, c) = \sum_{d=0}^{30} J^A(a, c, d).$$

The model does not take into account any onward transmission related to travel to home / final destination prior to self-isolation, nor the impact of non-compliance with any resulting self-isolation due to a positive detection (e.g. self-isolation after a positive thermal imaging scanner result). In summary, we have 4 key outputs from this that will be included in the results to assess the risk of incursion of SARS-CoV-2 into UK from air travellers. These are:

1. Number of cases that arrive at a UK airport - $I^A(a, c)$

2. Number of infectious cases that arrive at a UK airport - $J^A(a, c)$
3. Number of infectious cases arriving who still pose a potential risk of onward transmission after any UK health measure is completed - $U(a, c, M_H)$
4. Total infectious cases detected at UK airport - $D^A(a, c, M_H)$.

Estimating disease progression in cases

We simulate a population of one million cases to understand the disease progression of cases based on the number of days since an individual was infected. This is required as input for many parameters, such as the success of health control measures, probability of being infectious, probability of detection by exit detection measures and the probability of not travelling due to severe symptoms. Each case, i , is assigned a duration of infectivity, $D_{infective, i}$ and a first day that infectivity began, $t_{first, infective}$ in order to calculate which days the individual was infectious.

Whether or not case, i , is asymptomatic is given by the binomial random variable

$$Bin(1, p_{asymptomatic})$$

where $p_{asymptomatic}$ is the proportion of asymptomatic individuals in the population.

Symptomatic individuals can have a cough and/or fever (or neither) as given by

$$Bin(1, p_{cough})$$

and

$$Bin(1, p_{fever})$$

where p_{cough} is the proportion of symptomatic cases which develop a cough and p_{fever} is the proportion of symptomatic cases which develop a fever. In order to calculate which days an individual had a cough, individuals were assigned a duration of coughing, $D_{cough, i}$ and a first date that coughing began since becoming infected, $t_{first, cough}$. Likewise, the days on which an individual had a fever was calculated from the duration of fever, $D_{fever, i}$ and a first day that the fever began since becoming infected, $t_{first, fever}$.

Days calculated as continuous variables are rounded down such that an individual who has a fever on days 3.4-7.8 since infection will be taken as a fever between days 3-7 inclusive.

Calculating the day since exposure

As stated in the model framework, we assign a day of exposure for each case. This is the number of days since Day 0 when they contracted SARS-CoV-2. We use the simulation of disease progression in individuals to calculate a complete duration of infection, t_I , for each case. For non-UK travellers we use a uniform distribution to select a day between 0 and the infection duration for each non-UK traveller:

$$d \sim unif(0, t_I).$$

For UK travellers we consider their holiday duration alongside their infection duration. For each UK traveller we sample a trip duration t_H from 100,000 simulations of trip duration. For UK travellers infected on their trip, we therefore calculate the day of their infection by

$$d \sim unif(0, \min(t_I, t_H)).$$

For UK travellers infected before their trip we calculate their day of infection as being between the length of their trip and their total infection duration:

$$d \sim \text{unif}(t_H, t_I).$$

However, it is possible that in this case their trip is of longer duration than their infection duration. Therefore, although they were infected when they left the UK, they will no longer be infected on their return journey. We therefore remove these travellers from the cases.

The 100,000 samples of trip duration is calculated based on the proportion of trips that are in one of three categories – business, holiday and visiting friends and family. For each of these trip types, we use an appropriate normal distribution for trip duration, therefore resulting in a weighted sample, by trip type, of expected trip durations.

Probability too sick to travel, $p_{\text{sys}}(d)$

Some cases amongst the simulated population were predicted to develop severe disease and hence deemed to be too sick to travel. To determine if an individual develops severe disease or not we use:

$$\text{Bin}(1, p_{\text{severe}})$$

where p_{severe} is the proportion of symptomatic individuals who develop severe disease. Individuals who develop severe disease are assigned a first date that the severe disease begins, $t_{\text{first,severe}}$. Since we are only considering individuals who are within the first 30 days of infection, it is assumed that the duration of severe disease, D_{severe} , will last until the end of an individual's 30 day disease period.

The probability that an individual does not travel due to symptom severity, $p_{\text{sys}}(d)$, was calculated by bootstrap sampling 100 individuals without replacement, from the simulated population of 1 million cases, 1000 times. For each bootstrapped iteration, we assign whether each individual was classed as a case on day, d , $\text{Disease}(d_i)$ by:

$$\text{Disease}(d_i) = \begin{cases} 1 & \text{if } t_{\text{first,severe},i} \leq d_i \leq (t_{\text{first,severe},i} + D_{\text{severe},i}) \\ & \text{or if } t_{\text{first,cough},i} \leq d_i \leq (t_{\text{first,cough},i} + D_{\text{cough},i}) \\ & \text{or if } t_{\text{first,fever},i} \leq d_i \leq (t_{\text{first,fever},i} + D_{\text{fever},i}) \\ 0 & \text{otherwise} \end{cases}$$

We also assign which individuals had severe disease, $\text{Sev}(d_i)$, by:

$$\text{where } \text{Sev}(d_i) = \begin{cases} 1 & \text{if } t_{\text{first,severe},i} \leq d_i \leq (t_{\text{first,severe},i} + D_{\text{severe},i}) \\ 0 & \text{otherwise} \end{cases}$$

For each bootstrapped iteration, we calculate the average proportion of individuals too sick to travel as a proportion of the number of cases with disease on day, d , $\text{Sev}_{\text{prop}}(d_b)$, by:

$$\text{Sev}_{\text{prop}}(d_b) = \frac{\sum_{i=1}^{100} \text{Sev}(d_i)}{\sum_{i=1}^{100} \text{Disease}(d_i)}$$

Therefore, we calculate the average proportion of individuals with disease symptoms that are too sick to travel across all bootstrapped iterations, $p_{sys}(d)$ by:

$$p_{sys}(d) = \frac{\sum_{b=1}^{1000} Sev_{prop}(d_b)}{1000}$$

Probability that an individual is infectious, $p_{inf}(d)$

The probability that an individual on day, d , was infectious, $p_{inf}(d)$, was calculated by determining the average proportion of infectious or pre-infectious cases across all bootstrapped iterations by:

$$p_{inf}(d) = \frac{\sum_{b=1}^{1000} Inf_{prop}(d_b)}{1000}$$

$$\text{where } Inf_{prop}(d_b) = \frac{\sum_{i=1}^{100} Inf(d_i)}{100}$$

$$\text{where } Inf(d_i) = \begin{cases} 1 & \text{if } d_i \leq (t_{first,infective,i} + D_{infective,i}) \\ 0 & \text{otherwise} \end{cases}$$

Probability of detection by exit airport detection measures, $p_D^E(c, d, M_D)$

It is assumed that all airlines and all airports within each country c would enact the same detection measures, but that there is variability between the countries as to which measures are applied. We use country-specific data for the top 25 countries to determine which detection measures are in place in the exit airports [2]. Exit airport detection methods, primarily health checks and thermal imaging scanners, are designed to detect cases and therefore prevent potentially infectious cases from flying. Note that this is different to the health control measures at UK airports where we are specifically aiming to identify infectious cases (since cases are already in the UK).

We anticipate that the efficacy of different detection measures will be related to the sensitivity of each test, but will also need to incorporate population level factors such as heterogeneity in an individual's infectivity period, variability in symptom progression, and individuals at different stages of their disease.

We assume that health checks would primarily focus on coughing as a symptom. We calculate the proportion of individuals, i , who are detectable on each day since infection, d , by bootstrap sampling 100 individuals from our simulated population, 1000 times. For each bootstrapped iteration, b , we calculate the proportion of cases, i , who are detectable on each day, d , by health checks, $N_{health,b,d}$ and thermal imaging scanners, $N_{thermal,b,d}$ by

$$N_{health,b,d} = \frac{\sum_{b=1}^{1000} health_{prop}(d_b)}{1000} \quad \text{for health checks}$$

$$\text{where } health_{prop}(d_b) = \frac{\sum_{i=1}^{100} health(d_i)}{100}$$

$$\text{where } health(d_i) = \begin{cases} 1 & \text{if } t_{first,cough,i} \leq d_i \leq (t_{first,cough,i} + D_{cough,i}) \\ 0 & \text{otherwise} \end{cases}$$

$$N_{thermal,b,d} = \frac{\sum_{b=1}^{1000} thermal_{prop}(d_b)}{1000} \quad \text{for thermal scanners}$$

$$\text{where } thermal_{prop}(d_b) = \frac{\sum_{i=1}^{100} thermal(d_i)}{100}$$

$$\text{and } thermal(d_i) = \begin{cases} 1 & \text{if } t_{first,fever,i} \leq d_i \leq (t_{first,fever,i} + D_{fever,i}) \\ 0 & \text{otherwise} \end{cases}$$

Therefore, the probability of detection by method, M_D , on day d , $p_D^E(c, d, M_D)$, is calculated by

$$p_D^E(c, d, M_D) = N_{m,b,d} * se_m * (1 - NC)$$

where se_m is the sensitivity of the control measure and NC is the proportion of the travelling population that will comply with the measure.

Probability that an infectious individual is no longer a risk after health measures, $p_H(d, M_H)$

We consider the following health measures for travellers entering the UK via airports:

- Health checks (again, primarily focusing on coughing as a symptom)
- Thermal imaging scanners
- Self-isolation for 7, 10 or 14 days upon arrival
- Single RT-PCR test taken by a professional at the airport with results available 48 hours later,
- RT-PCR tests at the airport and a second test either 4 or 7 days later ("double-testing")
- A single self-obtained sample for RT-PCR analysis taken 4 or 7 days after arrival with results available 48 hours later ("single-testing")

For each day since infection, d , we bootstrap sample 100 cases from our simulated population, 1000 times. For each bootstrapped iteration, b , we calculate the proportion of infectious individuals, i , being detectable on each day, d , compared to the number of infectious or pre-infectious individuals on each day, d . For health checks, $N_{health,d}$, thermal imaging scanners, $N_{thermal,d}$ and self-isolation, $N_{isolation,d}$ we calculate this by

$$N_{health,d} = \frac{\sum_{b=1}^{1000} health_{prop}(d_b)}{1000} \quad \text{for health checks}$$

$$\text{where } health_{prop}(d_b) = \frac{\sum_{i=1}^{100} health(d_i)}{\sum_{i=1}^{100} Inf(d_i)}$$

$$\text{where } health(d_i) = \begin{cases} 1 & \text{if } t_{first,cough,i} \leq d_i \leq (t_{first,cough,i} + D_{cough,i}) \text{ and} \\ & d_i \leq (t_{first,infective,i} + D_{infective,i}) \\ 0 & \text{otherwise} \end{cases}$$

$$\text{and } Inf(d_i) = \begin{cases} 1 & \text{if } d_i \leq (t_{first,infective,i} + D_{infective,i}) \\ 0 & \text{otherwise} \end{cases}$$

$$N_{thermal,b,d} = \frac{\sum_{b=1}^{1000} thermal_{prop}(d_b)}{1000} \quad \text{for thermal scanners}$$

$$\text{where } thermal_{prop}(d_b) = \frac{\sum_{i=1}^{100} thermal(d_i)}{\sum_{i=1}^{100} Inf(d_i)}$$

$$\text{where } thermal(d_i) = \begin{cases} 1 & \text{if } t_{first,fever,i} \leq d_i \leq (t_{first,fever,i} + D_{fever,i}) \text{ and} \\ & d_i \leq (t_{first,infective,i} + D_{infective,i}) \\ 0 & \text{otherwise} \end{cases}$$

$$N_{isolation,d} = \frac{\sum_{b=1}^{1000} isolation_{prop}(d_b)}{1000} \quad \text{for self - isolation}$$

$$\text{where } isolation_{prop}(d_b) = 1 - \frac{\sum_{i=1}^{100} isolation(d_i)}{\sum_{i=1}^{100} Inf(d_i)}$$

$$\text{where } isolation(d_i) = \begin{cases} 1 & \text{if } (d + Q) \leq (t_{first,infective,i} + D_{infective,i}) \\ 0 & \text{otherwise} \end{cases}$$

where Q is the duration of the self-isolation.

Therefore, the probability of control by health measure, M , on day d , $p_H(d, M_H)$ is calculated by

$$p_H(d, M_H) = N_{m,b,d} * se_m * (1 - NC)$$

where se_m is the sensitivity of the control measure and NC is the proportion of the travellers who will not comply with the health control measure.

We assume that if an individual is predicted to be within their infectious period, a positive RT-PCR result means that that individual is infectious and poses a potential risk of spreading SARS-CoV-2 to others. We also assume that every individual within their infectious period will excrete at least the minimum infectious dose (live virus) required for transmission from an infected person to a 'naive' or other recipient on every day of their infectious period. We calculate the efficacy of RT-PCR tests in a similar fashion to the other health control measures except that the time taken to receive test results will mean that a proportion of infected individuals will no longer be infectious during this time. For each bootstrapped iteration, the proportion of infectious cases out of the total number of infectious and pre-infectious individuals, PCR_d was calculated by

$$PCR_d = \frac{\sum_{b=1}^{1000} PCR_{prop}(d_b)}{1000}$$

$$PCR_{prop}(d_b) = \frac{\sum_{i=1}^{100} PCR(d_i)}{\sum_{i=1}^{100} Inf(d_i)}$$

$$\text{where } PCR(d_i) = \begin{cases} 1 & \text{if } t_{first,infective,i} \leq d_i \leq (t_{first,infective,i} + D_{infective,i}) \\ 0 & \text{otherwise} \end{cases}$$

$$\text{and } Inf(d_i) = \begin{cases} 1 & \text{if } d_i \leq (t_{first,infective,i} + D_{infective,i}) \\ 0 & \text{otherwise} \end{cases}$$

We calculate the proportion of infectious cases which cease to still be infectious after the 48 hour wait for results, $Negative(d)$ by

$$Negative_d = \frac{\sum_{b=1}^{1000} Negative_{prop}(d_b)}{1000}$$

$$Negative_{prop}(d_b) = \frac{\sum_{i=1}^{100} Negative(d_i)}{\sum_{i=1}^{100} Inf(d_i)}$$

$$\text{where } Negative(d_i) = \begin{cases} 1 & \text{if } t_{first,infective,i} \leq d \leq (t_{first,infective,i} + D_{infective,i}) \text{ and} \\ & (t_{first,infective,i} + D_{infective,i}) < d + 2 \\ 0 & \text{otherwise} \end{cases}$$

Therefore, the probability of detecting an infectious traveller by RT-PCR (including the 48 hour wait) on day d , $p_H(d, PCR)$ is calculated by

$$p_H(d, PCR) = ((PCR_d * se_{PCR}) + (Negative_d * 1 - se_{PCR})) * (1 - NC)$$

where se_{PCR} is the sensitivity of the RT-PCR and NC is the proportion of travellers that will not comply.

Double testing

The double-testing health measure assumes that travellers on arrival to UK airports will have a RT-PCR test at the airport, followed by a second RT-PCR test either 4 or 7 days later. We assume that the first test would be taken by a professional at the airport whereas the second test will be a self-provided test taken at home. The traveller would be required to self-isolate until the result of the first and second test is returned, confirming two negative test results. It is assumed that test results will be returned two days later. Therefore, if a person had their second test 4 days after the first test (on arrival) they would need to self-isolate for 6 days. As well as comparing this control measure to the other UK health measures that may be implemented at UK airports, we consider different numbers of days between tests to assess if there is an optimal day for the second test to be implemented on.

To model the effectiveness of this test, we consider the possible ways that a person would be considered no longer a risk to the UK population with regards to the spread of SARS-CoV-2 after completion of the measure providing they comply with the required period of self-isolation:

- A positive result on the first test
- The individual received a false negative on the first test but is no longer infectious by the date of the second test, and thus receives a true negative
- The individual received a false negative on the first test but a positive result on the second test
- The individual received two false negatives on the tests, but is no longer infectious by the day the second test results are received.

The number of people successfully “detected” by these four processes is reduced by non-compliance; we assume that anyone who does not comply with the self-isolation or does not take the second test counts as a potential risk to the UK, regardless of their infectivity status.

In order to model this control measure, M_{DT} , we determine first the number of infectious cases who will comply with the self-isolation and two tests, $J^{Comp}(a, c, d)$, as

$$J^{Comp}(a, c, d) \sim Bin(J^A(a, c, d), 1 - NC).$$

The next step is to determine, via the same equations for a single RT-PCR test, the number of infectious (complied) cases on day d of their infection, $J^{Comp}(a, c, d)$, that will receive a positive result in the first test, $D^{1st}(d, M_{DT})$:

$$D^{1st}(d, M_{DT}) \sim Bin(J^{Comp}(a, c, d), PCR_d * se_{PCR}),$$

where PCR_d is described in the previous section on RT-PCR probability of detection. As we have already removed the cases that were non-compliant, we do not need to consider them in the equation above, in comparison to the similar equation in the previous section. The remaining infectious complied individuals received a false negative on the first test, $J^{1st}(a, c, d)$:

$$J^{1st}(a, c, d) = J^{Comp}(a, c, d) - D^{1st}(d, M_{DT}).$$

We move individuals on in their disease progression depending on the number of days between tests, τ , and we assess if the individuals are still infectious on this new day ($d + \tau$), using the probability, $p_{inf}(d + \tau)$, that an individual is infectious. Therefore, the number of infectious people, $J^{2nd}(a, c, d + \tau)$, on the day of the 2nd test is calculated as:

$$J^{2nd}(a, c, d + \tau) \sim Bin(J^{1st}(a, c, d), p_{inf}(d + \tau)).$$

Thus,

$$D^{2nd-N}(d, M_{DT}) = J^{2nd}(a, c, d + \tau) - J^{1st}(a, c, d)$$

is the number of infectious (on day d) people that are no longer infectious on day $d + \tau$, and thus receive a true negative result.

Similar to the 1st RT-PCR test, the number of people who are detected by a positive result on the 2nd test is given by

$$D^{2nd-P}(d + \tau, M_{DT}) \sim Bin(J^{2nd}(a, c, d + \tau), PCR_{d+\tau} * se_{PCR}),$$

Lastly, it is possible that a person will receive a second false negative test but is no longer infectious on the day they receive the results of their second test.

$$D^{R-N}(d, M_{DT}) \sim Bin(J^{2nd}(a, c, d + \tau), Negative_{d+\tau} * (1 - se_{PCR}))$$

Therefore, through double-testing the total number of individuals that are no longer a risk of onward transmission once the measure is completed is

$$D^{DT}(d, M_{DT}) = D^{1st}(d, M_{DT}) + D^{2nd-N}(d, M_{DT}) + D^{2nd-P}(d, M_{DT}) + D^{R-N}(d, M_{DT}).$$

The number of infectious people who are undetected by this health measure, $U(a, c, M_{DT})$ is $U(a, c, M_{DT}) = J^A(a, c, d) - D^{DT}(d, M_{DT})$.

We assess the number of undetected infectious individuals, $U(a, c, M_{DT})$, and each of the four detection outcomes, $D^{1st}(d, M_{DT})$, $D^{2nd-N}(d, M_{DT})$, $D^{2nd-P}(d, M_{DT})$ and $D^{R-N}(d, M_{DT})$.

We assume that the first test performed will be an official test by a professional and the second test will be self-provided sample, resulting in different sensitivities in the two tests (see Parameter estimation section).

Single testing at home

We implement the single testing measure in the same way as the double testing regime except that the sensitivity of the first test at the airport is set to 0. This effectively is the same as not having the first airport test. We assume the RT-PCR test will be a self-provided sample taken 4 or 7 days after arrival and, as in all the RT-PCR measures, the results will be returned 2 days later. Self-isolation is required from arrival until the test results are received but a probability for non-compliance is included.

Statistical analysis

As stated previously, the efficacy of each health measure is defined by its ability to minimise the risk from infectious travelers (either through self-isolation or identifying infectious travelers). The sum of the number of infectious travelers who are not detected after each health measure is taken as a percentage of the sum of the number of infectious travelers who arrive at the airport for each iteration. These values were visually checked to see if they are parametric or nonparametrically distributed. As these were parametrically distributed, the mean and percentiles (2.5th and 97.5th) are calculated for each health measure. An ANOVA test is performed to see if there are significant differences between all of the health measures. Welch's two sample t-tests are used as post-hoc tests to compare differences between health measures and self-isolation of 7, 10 and 14 days.

The different travel restriction strategies assessed in the main text are assessed by a benefit-cost ratio. This is calculated as the total number of infectious travelers that would be required to self-isolate divided by the total number of travelers that would be required to self-isolate, based on the restriction list.

Parameter estimation

A list of data sources used in this project can be seen in Table S1. Eurostat [3] provide data on the number of passengers on board aircraft arriving at each UK airport from EU and non-EU countries separately. The EU dataset contains the information from 2019, whereas the most recent data in non-EU dataset is from 2018. This is provided at a monthly aggregation. For this risk assessment, we have taken the August data from each year as representative of what would have occurred in the absence of the pandemic. As the data is monthly, we divide by 4 to get an approximate weekly number of passengers flying from each country to each airport. We subset this to only consider the top 25 countries.

The duration of flights is calculated based on the distance of each country to each UK airport and the average speed of an airplane. While this does not take into account stopovers for longer journeys, it is a reasonable estimate of journey time. The distance is calculated using the latitude and longitude of UK airports and the centre of each country, as we do not know which airport in the country the flights are leaving from.

Key model parameters are listed in Table S2. It is assumed that the sensitivity of the RT-PCR tests does not change during an individual's duration of infectivity. It has been proven that SARS-CoV-2 RT-PCR tests can be positive for at least the first week of symptom onset, with a subsequent decline thereafter [4, 5]. Viral RNA may even be detected in certain individuals for as long as 25 days after symptom onset [5]. However, due to the likely discrepancies between duration of viral detection and clinical infectiousness, we use the shorter distributions which have been calculated. Therefore, for the duration of infectivity, $D_{infective}$, we use the distributions for preclinical and clinical infectiousness only [6]. The duration of cough and fever, D_{cough} and D_{fever} respectively, are equated to the duration of clinical infectiousness [6].

Distributions for the latent period are used to calculate the date that an individual is first infectious, $t_{first,infective}$. It has been shown that the median duration from COVID-19 disease onset to development of a cough or a fever is one day [7]. Therefore, the date on which an individual developed a cough, $t_{first,cough}$, or fever, $t_{first,fever}$, is taken from distributions for the end of an incubation period, which is a combination of the latent period and clinical infectiousness [6]. The date on which an individual developed severe disease, $t_{first,severe}$, is taken from an individual's date of symptom onset plus a distribution of time from symptom onset to hospitalisation [6].

Table S1. Data sources used in the model.

Model Input	Data Used	Date Range	Reference
Number of passengers flying from 25 countries to UK - $V(a, c)$	Eurostat passenger data for travel from EU countries to UK airport	2019	avia_painac data from [3]
	Eurostat passenger data for travel from non-EU countries to UK airport	2018	avia_paexac data from [3]
Top 25 countries for travel to UK	Eurostat passenger data	2018	[3]
Exit detection measures, M_D ,	Detection measures in airports in each of the 25 countries	2020	[2]
Latitude and longitude of all UK airports	Latitude and longitude for all airports in the world	2020	[8]
Cases of SARS-CoV-2	The number of cases in each country in the world	10/03/2020 to 08/06/2020	Provided by PHE
Deaths due to SARS-CoV-2	The number of deaths due to SARS-CoV-2 in every country in the world	10/03/2020 to 08/06/2020	Provided by PHE
Population size	Coronavirus source database published online at OurWorldInData.org.	31/12/2019 to 09/06/2020	[9]
Estimated age group distributions for each country	Age composition – Population by Age groups – Both Sexes published online at United Nations Department of Economic and Social affairs	2020	[10]
Case Fatality Ratio (CFR) for different age groups	Calculated for different age groups using mainland China cases	01/01/2020 to 11/02/2020	[11]
Asymptomatic rates for different age groups	Mean and 95% quantile range subclinical fraction estimates for varying age groups from six countries, China, Italy, Singapore, Japan, South Korea and Canada.	2020	[12]

Table S2. Parameter descriptions and values

Parameter description	Value	Reference
<i>Travel parameters</i>		
Maximum duration traveller's disease period	30 days	
Proportion UK to non UK travellers p_{nonUK}	Mean 0.51 (SD 0.01)	[13]
Proportion trips of type: business / holiday / VFR	0.19/0.47/0.34	[13]
Duration business trip in days	Normal (4.98, 0.86)	[13]
Duration holiday trip in days	Normal (8.72, 2.41)	[13]
Duration VFR trip in days	Normal (12.99, 1.22)	[13]
Proportion of travellers to travel during COVID-19 pandemic compared to usual levels	0.4	[14]
Weekly trend	4	-
<i>Detection parameters</i>		
Proportion of asymptomatic cases ($p_{asymptomatic}$)	0.50	[12]
Proportion of symptomatic cases which have a cough (p_{cough})	0.777	[15]
Proportion of symptomatic cases which have a fever (p_{fever})	0.601	[15]
Proportion of symptomatic cases which develop severe disease (p_{severe})	0.185	[15]
Duration of infectivity ($D_{infective}$)	Gamma (4,1.25)	[6]
Duration of cough (D_{cough})	Gamma (4,0.875)	[6]
Duration of fever (D_{fever})	Gamma (4,0.875)	[6]
First day that an individual is infectious ($t_{first,infective}$)	Gamma (4,1)	[6]
First day that an individual develops a cough ($t_{first,cough}$)	Gamma (4,1.375)	[6]
First day that an individual develops a fever ($t_{first,fever}$)	Gamma (4,1.375)	[6]
First day that an individual develops severe disease ($t_{first,severe}$)	Gamma (7,1)	[6]
Sensitivity of thermal imaging scanners (se_{therm})	0.86	[16]
Sensitivity of pooled RT-PCR sample taken by a professional ($se_{PCR,prof}$)	0.95	[17]
Sensitivity of self-obtained RT-PCR sample ($se_{PCR,self}$)	0.66	[18]
Sensitivity of health checks (se_{health})	0.75	Assumption
Non-compliance probability (NC)	0.2 for thermal imaging scanner, self-isolation and RT-PCR. 0 for health checks.	Assumption

Sensitivity analysis

There are a number of parameters in the model that were assumptions based on lack of data or knowledge and hence are highly uncertain. Therefore, we consider a number of sensitivity analyses to assess the impact of these parameters on the final model results.

We assess the uncertainty around flight numbers, $V(a, c)$, the proportional reduction in travellers and country-level prevalence, $\rho(c)$, with the number of cases who arrive at a UK airport, $I^A(a, c)$ (Figure S 2). We calculate the difference between the number of cases in each iteration and the average number of cases arriving in the baseline scenario (across all iterations). The mean and 95% confidence intervals were calculated. Although we selected the number of cases for this control (rather than the number of infectious travellers) the conclusions on the sensitivity of the results to the above parameters would remain the same.

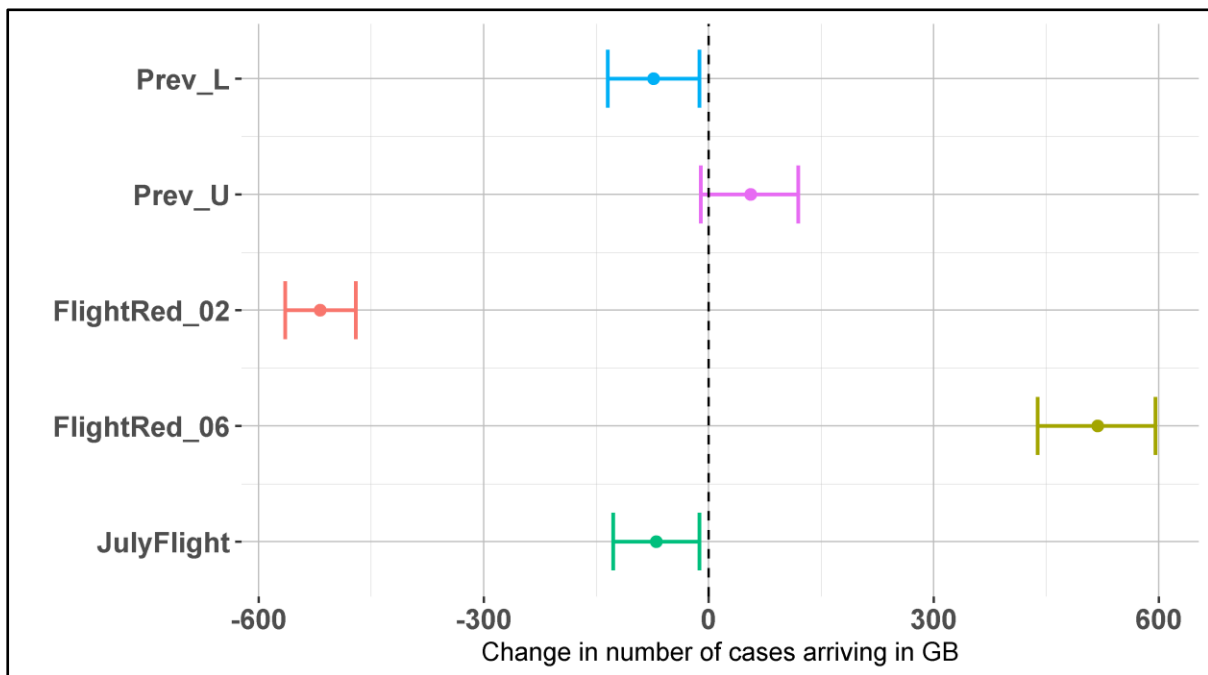


Figure S 2: Sensitivity analysis showing the change in the number of cases arriving in UK compared to baseline when the prevalence estimates are decreased to the lower confidence limit (Prev_L), increased to the upper confidence limit (Prev_U), flights are reduced to 20% of normal August levels (FlightRed_02), flights are reduced to 60% of normal August levels (FlightRed_06) and July flight data are used (JulyFlight). The biggest effect comes from uncertainty in the reduction in flight numbers.

References

1. Patel V, McCarthy C, Taylor RA, Moir R, Kelly LA, Snary EL. An improved methodology for estimating the prevalence of SARS-CoV-2. *MedRxiv* 2020.08.04.20168187 [Preprint]. 2020 [cited 2020 Aug 19]. Available from: <https://medrxiv.org/cgi/content/short/2020.08.04.20168187v1>
2. iata.org [Internet]. COVID-19 Government Public Health Mitigation Measures; c2020 [cited 2020 Aug 13]. Available from: <https://www.iata.org/en/programs/covid-19-resources-guidelines/covid-gov-mitigation/>.
3. Eurostat Bulk Download Listing [Internet]. Luxembourg City (Luxembourg) [cited 2020 Aug 13]. Available from: <http://ec.europa.eu/eurostat/estat-navtree-portlet-prod/BulkDownloadListing>.
4. Wölfel R, Corman VM, Guggemos W, Seilmaier M, Zange S, Muller MA et al. Virological assessment of hospitalized patients with COVID-2019. *Nature*. 2020;581:465–469
5. To KKW, Tsang OTY, Leung WS, Tam AR, Wu TC, Lung DC et al. Temporal profiles of viral load in posterior oropharyngeal saliva samples and serum antibody responses during infection by SARS-CoV-2: an observational cohort study. *Lancet Infect Dis*, 2020;20:565–574
6. Davies NG, Kucharski AJ, Eggo RM, Gimma A, Edmunds WJ. Effects of non-pharmaceutical interventions on COVID-19 cases, deaths, and demand for hospital services in the UK: a modelling study. *Lancet Public Heal*. 2020;July(5):11–15
7. Zhou F, Yu T, Du R, Fan G, Liu Y, Xiang J et al. Clinical course and risk factors for mortality of adult inpatients with COVID-19 in Wuhan, China: a retrospective cohort study. *Lancet* 2020;395:1054–1062
8. Open Flights: Airport, airline and route data. 2006 [cited 2020 Jun 9]. Available from: <https://openflights.org/data.html>.
9. Ritchie H: Coronavirus source data [dataset]. Our World in Data. Available from <https://ourworldindata.org/coronavirus-source-data>.
10. un.org [Internet]. World Population Prospects 2019; c2019 [cited 2020 Aug 19]. Available from: <https://population.un.org/wpp/>.
11. Verity R, Okell LC, Dorigatti I, Winskill P, Whittaker C, Imai N et al. Estimates of the severity of COVID-19 disease. *Lancet Infect Dis* 2020;20:669-77
12. Davies NG, Klepac P, Liu Y, Prem K, Jit M, Eggo RM. Age-dependent effects in the transmission and control of COVID-19 epidemics. *Nat Med*. 2020
13. Horsfield G. Travel trends: 2019 [dataset]. 2020 May 22 [cited 2020 Jun 9]. Office for National Statistics. Available from: <https://www.ons.gov.uk/peoplepopulationandcommunity/leisureandtourism/articles/traveltrends/2019>
14. ryanair.com [Internet]. Ryanair to restore 40% of scheduled flights from 1 July; c2020 [cited 2020 Jun 6]. Available from: <https://corporate.ryanair.com/news/ryanair-to-restore-40-of-scheduled-flights-from-1-july/>.
15. Boddington NL, Charlett A, Elgohari S, et al. COVID-19 in Great Britain: epidemiological and clinical characteristics of the first few hundred (FF100) cases: a descriptive case series and case control analysis. *MedRxiv* 2020.05.18.20086157 [Preprint]. 2020 [cited 2020 Jun 9]. Available from: <https://www.medrxiv.org/content/10.1101/2020.05.18.20086157v1>
16. Priest PC, Duncan AR, Jennings LC, Baker MG. Thermal image scanning for influenza border screening: Results of an airport screening study. *PLoS One*. 2011;6(1)
17. European Centre for Disease Prevention and Control. Methodology for estimating point prevalence of SARS-CoV-2 infection by pooled RT-PCR testing. Stockholm (Sweden): ECDC; 2020 May 28.
18. Kojima N, Turner F, Slepnev V, Bacelar A, Deming L, Kodeboyina S, Klausner JD. Self-Collected Oral Fluid and Nasal Swabs Demonstrate Comparable Sensitivity to Clinician Collected Nasopharyngeal Swabs for Covid-19 Detection. *MedRxiv* 2020.04.11.20062372 [Preprint]. 2020 [cited 2020 Jun 9]. Available from: <https://www.medrxiv.org/content/10.1101/2020.04.11.20062372v1>