

Supplementary Table 1. Criteria for scoring disease severity in COVID-19 patients.

Severity Score	Criteria
Mild	SpO ₂ >94% on room air AND no pneumonia on imaging
Moderate	SpO ₂ <94% on room air OR pneumonia on imaging
Severe	High flow nasal cannula (HFNC), non-rebreather mask (NRBM), Bilevel Positive Airway Pressure (non-invasive positive airway ventilation), or Mechanical ventilation AND no pressor medications AND creatinine clearance > 30 AND ALT < 5x upper limit of normal
Severe with end organ damage (EOD)	High flow nasal cannula (HFNC), non-rebreather mask (NRBM), Bilevel Positive Airway Pressure (non-invasive positive airway ventilation), or Mechanical ventilation AND pressor medications OR creatinine clearance <30 OR new renal replacement therapy OR ALT > 5x upper limit of normal

Supplementary Table 2. Confidence intervals of odds ratio based on 1000 bootstrap iterations.

Severity	2.5%	50%	97.5%
(Intercept)	0.015	0.071	0.320
Any GI Symptom	0.378	0.559	0.844
baseline.GenderMale	0.939	1.380	2.090
baseline.Age	1.004	1.016	1.031
baseline.DIABETES	0.600	0.995	1.729
baseline.BMI	1.009	1.039	1.069
baseline.RACE_ETHNICITY_BLACK OR AFRICAN-AMERICAN	0.293	0.503	0.876
baseline.RACE_ETHNICITY_HISPANIC	0.688	1.188	2.035
baseline.RACE_ETHNICITY_OTHER	0.771	1.286	2.245
baseline.HTN	0.636	0.990	1.543
baseline.Lung.Disease	0.272	0.562	1.063
baseline.Heart.Disease	0.673	1.095	1.842
	2.5%	50%	97.5%
(Intercept)	0.013	0.060	0.259
Diarrhea	0.433	0.653	0.978
baseline.GenderMale	0.963	1.413	2.124
baseline.Age	1.005	1.017	1.033
baseline.DIABETES	0.604	1.012	1.747
baseline.BMI	1.008	1.037	1.067
baseline.RACE_ETHNICITY_BLACK OR AFRICAN-AMERICAN	0.300	0.521	0.920
baseline.RACE_ETHNICITY_HISPANIC	0.707	1.215	2.098
baseline.RACE_ETHNICITY_OTHER	0.777	1.311	2.280
baseline.HTN	0.634	0.977	1.529
baseline.Lung.Disease	0.267	0.546	1.042
baseline.Heart.Disease	0.686	1.113	1.826
	2.5%	50%	97.5%
(Intercept)	0.013	0.058	0.271
Nausea	0.329	0.563	0.880
baseline.GenderMale	0.932	1.364	2.089
baseline.Age	1.005	1.018	1.032
baseline.DIABETES	0.609	1.015	1.738
baseline.BMI	1.007	1.036	1.065
baseline.RACE_ETHNICITY_BLACK OR AFRICAN-AMERICAN	0.322	0.543	0.946
baseline.RACE_ETHNICITY_HISPANIC	0.749	1.264	2.169
baseline.RACE_ETHNICITY_OTHER	0.816	1.340	2.338
baseline.HTN	0.615	0.950	1.477
baseline.Lung.Disease	0.248	0.516	0.980
baseline.Heart.Disease	0.676	1.091	1.830
	2.5%	50%	97.5%
(Intercept)	0.012	0.054	0.236
Vomiting	0.190	0.399	0.732
baseline.GenderMale	0.938	1.395	2.107
baseline.Age	1.006	1.018	1.032
baseline.DIABETES	0.615	1.032	1.744
baseline.BMI	1.006	1.036	1.065
baseline.RACE_ETHNICITY_BLACK OR AFRICAN-AMERICAN	0.330	0.558	0.962
baseline.RACE_ETHNICITY_HISPANIC	0.766	1.286	2.191
baseline.RACE_ETHNICITY_OTHER	0.802	1.337	2.307
baseline.HTN	0.610	0.950	1.511
baseline.Lung.Disease	0.261	0.526	0.981
baseline.Heart.Disease	0.703	1.123	1.886

Mortality	2.5%	50%	97.5%
(Intercept)	0.000	0.003	0.022
Any GI Symptom	0.335	0.544	0.861
baseline.GenderMale	0.679	1.049	1.703
baseline.Age	1.036	1.053	1.074
baseline.DIABETES	0.527	0.930	1.605
baseline.BMI	1.010	1.043	1.081
baseline.RACE_ETHNICITY_BLACK OR AFRICAN-AMERICAN	0.529	1.035	1.959
baseline.RACE_ETHNICITY_HISPANIC	0.867	1.597	2.899
baseline.RACE_ETHNICITY_OTHER	0.450	0.878	1.630
baseline.HTN	0.600	1.007	1.665
baseline.Lung.Disease	0.342	0.778	1.577
baseline.Heart.Disease	0.652	1.154	2.028
	2.5%	50%	97.5%
(Intercept)	0.000	0.003	0.017
Diarrhea	0.388	0.638	0.985
baseline.GenderMale	0.702	1.076	1.737
baseline.Age	1.038	1.055	1.076
baseline.DIABETES	0.531	0.945	1.608
baseline.BMI	1.007	1.041	1.079
baseline.RACE_ETHNICITY_BLACK OR AFRICAN-AMERICAN	0.562	1.071	2.020
baseline.RACE_ETHNICITY_HISPANIC	0.901	1.640	2.898
baseline.RACE_ETHNICITY_OTHER	0.468	0.900	1.709
baseline.HTN	0.595	1.001	1.665
baseline.Lung.Disease	0.333	0.752	1.561
baseline.Heart.Disease	0.660	1.166	2.020
	2.5%	50%	97.5%
(Intercept)	0.000	0.003	0.019
Nausea	0.255	0.490	0.886
baseline.GenderMale	0.669	1.041	1.719
baseline.Age	1.038	1.055	1.075
baseline.DIABETES	0.528	0.938	1.623
baseline.BMI	1.006	1.040	1.077
baseline.RACE_ETHNICITY_BLACK OR AFRICAN-AMERICAN	0.591	1.112	2.116
baseline.RACE_ETHNICITY_HISPANIC	0.956	1.718	3.085
baseline.RACE_ETHNICITY_OTHER	0.474	0.916	1.703
baseline.HTN	0.579	0.960	1.571
baseline.Lung.Disease	0.313	0.699	1.457
baseline.Heart.Disease	0.655	1.155	2.007
	2.5%	50%	97.5%
(Intercept)	0.000	0.002	0.016
Vomiting	0.116	0.364	0.753
baseline.GenderMale	0.690	1.070	1.759
baseline.Age	1.038	1.055	1.076
baseline.DIABETES	0.558	0.970	1.652
baseline.BMI	1.006	1.040	1.077
baseline.RACE_ETHNICITY_BLACK OR AFRICAN-AMERICAN	0.609	1.145	2.144
baseline.RACE_ETHNICITY_HISPANIC	1.004	1.746	3.086
baseline.RACE_ETHNICITY_OTHER	0.463	0.907	1.697
baseline.HTN	0.586	0.974	1.620
baseline.Lung.Disease	0.318	0.717	1.489
baseline.Heart.Disease	0.670	1.186	2.025

ICU admission	2.5%	50%	97.5%
(Intercept)	0.03	0.17	1.11
Any GI Symptom	0.46	0.75	1.19
baseline.GenderMale	1.23	2.00	3.26
baseline.Age	0.98	0.99	1.01
baseline.DIABETES	0.91	1.70	3.23
baseline.BMI	0.98	1.02	1.05
baseline.RACE_ETHNICITY_BLACK OR AFRICAN-AMERICAN	0.26	0.57	1.20
baseline.RACE_ETHNICITY_HISPANIC	0.79	1.50	2.95
baseline.RACE_ETHNICITY_OTHER	0.48	0.98	1.99
baseline.HTN	0.34	0.61	1.08
baseline.Lung.Disease	0.15	0.63	1.45
baseline.Heart.Disease	0.20	0.51	0.97
	2.5%	50%	97.5%
(Intercept)	0.02	0.16	1.10
Diarrhea	0.45	0.76	1.25
baseline.GenderMale	1.23	2.00	3.27
baseline.Age	0.98	0.99	1.01
baseline.DIABETES	0.89	1.70	3.25
baseline.BMI	0.98	1.02	1.05
baseline.RACE_ETHNICITY_BLACK OR AFRICAN-AMERICAN	0.26	0.56	1.19
baseline.RACE_ETHNICITY_HISPANIC	0.78	1.50	2.96
baseline.RACE_ETHNICITY_OTHER	0.48	0.98	1.98
baseline.HTN	0.34	0.61	1.09
baseline.Lung.Disease	0.15	0.62	1.44
baseline.Heart.Disease	0.20	0.52	0.99
	2.5%	50%	97.5%
(Intercept)	0.02	0.14	0.95
Nausea	0.45	0.85	1.42
baseline.GenderMale	1.24	2.00	3.33
baseline.Age	0.98	0.99	1.01
baseline.DIABETES	0.91	1.74	3.31
baseline.BMI	0.98	1.02	1.05
baseline.RACE_ETHNICITY_BLACK OR AFRICAN-AMERICAN	0.27	0.60	1.25
baseline.RACE_ETHNICITY_HISPANIC	0.81	1.54	3.00
baseline.RACE_ETHNICITY_OTHER	0.49	0.99	1.97
baseline.HTN	0.33	0.59	1.06
baseline.Lung.Disease	0.14	0.60	1.40
baseline.Heart.Disease	0.20	0.51	0.98
	2.5%	50%	97.5%
(Intercept)	0.02	0.15	0.98
Vomiting	0.16	0.53	1.08
baseline.GenderMale	1.21	1.98	3.26
baseline.Age	0.98	0.99	1.01
baseline.DIABETES	0.92	1.74	3.31
baseline.BMI	0.98	1.02	1.05
baseline.RACE_ETHNICITY_BLACK OR AFRICAN-AMERICAN	0.27	0.60	1.26
baseline.RACE_ETHNICITY_HISPANIC	0.82	1.55	3.01
baseline.RACE_ETHNICITY_OTHER	0.48	0.99	1.96
baseline.HTN	0.34	0.61	1.07
baseline.Lung.Disease	0.15	0.62	1.43
baseline.Heart.Disease	0.20	0.52	0.99

Supplementary Table 3. Confidence interval of AUC (95%) based on 1000 bootstrap iterations.

Severity	2.50%	50%	97.50%
Age + BMI	0.539	0.587	0.598
Age + BMI + Nausea	0.567	0.608	0.619
Age + BMI + Vomiting	0.558	0.607	0.618
Age + BMI + Diarrhea	0.574	0.630	0.651
Age + BMI + Any GI symptoms	0.605	0.640	0.651

Mortality	2.50%	50%	97.50%
Age + BMI	0.685	0.700	0.702
Age + BMI + Nausea	0.698	0.717	0.722
Age + BMI + Vomiting	0.702	0.719	0.724
Age + BMI + Diarrhea	0.697	0.718	0.726
Age + BMI + Any GI symptoms	0.708	0.727	0.736

ICU admission	2.50%	50%	97.50%
Age + BMI	0.534	0.560	0.599
Age + BMI + Nausea	0.496	0.523	0.650
Age + BMI + Vomiting	0.488	0.515	0.626
Age + BMI + Diarrhea	0.562	0.649	0.667
Age + BMI + Any GI symptoms	0.570	0.647	0.670

Supplementary Table 4. IL-6, IL-8, TNF- α , and IL-1 β concentrations on admission in patients with and without GI symptoms. Benjamini adjusted p-values (signed - log₁₀ scale) from t-test are reported. Association passing a 10% FDR are highlighted in yellow.

	Nausea	Vomiting	Diarrhea	Any GI Symptoms
IL-6	-1.958	-0.473	-2.226	-2.484
IL-8	-4.098	-1.440	-2.302	-3.133
TNF- α	-0.815	-0.311	-0.406	-0.864
IL-1 β	-0.295	-0.473	-0.295	-0.295

Supplementary Table 5: Cluster assignment for each of the 92 Olink analytes.

Marker	Cluster
IL8	1
AXIN1	1
OSM	1
CCL4	1
TGF.alpha	1
TNFSF14	1
HGF	1
SIRT2	1
EN.RAGE	1
CASP.8	1
TWEAK	1
STAMBP	1
VEGFA	2
CDCP1	2
IL.17C	2
CXCL9	2
CST5	2
FGF.23	2
FGF.5	2
LIF.R	2
FGF.21	2
IL.15RA	2
IL.10RB	2
PD.L1	2
MMP.10	2
TNF	2
CD5	2
X4E.BP1	2
CD40	2
CCL25	2
CX3CL1	2
TNFRSF9	2
CSF.1	2
CD8A	3
CD244	3
TRAIL	3
CD6	3
SCF	3
CCL11	3
CCL19	3
TRANCE	3
IL.12B	3
CCL3	3
Fit3L	3
DNER	3
IFN.gamma	3
FGF.19	3
MCP.2	3
TNFB	3

Marker	Cluster
MCP.3	4
OPG	4
uPA	4
IL6	4
MCP.1	4
IL18	4
IL.18R1	4
IL10	4
CCL23	4
CXCL10	4
LIF	4
CCL20	4
ADA	4
GDNF	5
IL.17A	5
IL.20RA	5
IL.2RB	5
IL.1.alpha	5
IL2	5
TSLP	5
SLAMF1	5
IL.10RA	5
IL.22.RA1	5
Beta.NGF	5
IL.24	5
IL13	5
ARTN	5
IL.20	5
CCL28	5
IL33	5
IL4	5
NRTN	5
NT.3	5
IL5	5
IL7	6
LAP.TGF.beta.1	6
CXCL11	6
CXCL1	6
MCP.4	6
MMP.1	6
CXCL5	6
CXCL6	6
ST1A1	6

Supplementary Table 6: Olink analytes in patients with and without GI symptoms. P-values from t-test comparing patients with and without GI symptoms. Signed Benjamini-Hochberg adjusted p-value (-log₁₀ scale) are reported.

	Any GI Symptoms	Nausea	Vomiting	Diarrhea
IL8	-1.315	-0.654	-1.345	-1.562
VEGFA	0.006	0.014	-0.356	-0.027
CD8A	-0.823	-0.175	0.193	-0.823
MCP.3	-0.524	-1.437	-0.422	-0.254
GDNF	-1.355	-1.345	-0.014	-1.490
CDGP1	-0.449	-0.309	-0.175	-0.524
CD244	-0.023	0.110	0.126	-0.017
IL7	1.345	0.175	-0.123	1.345
OPG	-2.183	-1.209	-0.014	-2.183
LAP.TGF.beta.1	0.356	-0.006	-0.626	0.407
uPA	-0.156	-0.009	0.126	-0.385
IL6	-1.063	-1.022	-0.254	-0.747
IL.17C	-1.209	-0.287	-0.023	-1.455
MCP.1	-0.175	-0.654	-0.458	-0.187
IL.17A	-2.183	-1.097	-1.419	-2.183
CXCL11	0.058	-0.195	-0.004	0.027
AXIN1	-0.009	-0.031	-1.209	-0.026
TRAIL	1.063	0.626	0.314	0.458
IL.20RA	-0.548	-0.573	-0.563	-0.618
CXCL9	-0.573	-0.367	0.023	-1.209
CST5	-0.626	-0.187	-0.004	-0.969
IL.2RB	-0.156	-0.028	0.009	-0.044
IL.1.alpha	0.046	-0.023	0.001	0.162
OSM	-0.178	-0.117	-0.175	-0.242
IL2	-0.341	-0.424	-0.287	-0.264
CXCL1	-0.058	-0.533	-0.733	-0.164
TSLP	0.009	0.001	-0.031	-0.009
CCL4	-0.287	-0.022	0.022	-1.355
CD6	-0.001	0.027	0.363	0.001
SCF	-0.245	-0.022	-0.114	-0.082
IL18	-0.254	-0.068	0.332	-0.434
SLAMF1	-0.618	-0.707	-0.190	-0.708
TGF.alpha	-1.087	-0.626	-0.675	-1.345
MCP.4	0.191	-0.175	-0.461	0.058
CCL11	-0.327	-0.440	-1.209	-0.260
TNFSF14	0.014	-0.014	-0.434	-0.012
FGF.23	-0.556	-0.058	0.036	-1.209
IL.10RA	0.027	0.218	-0.044	-0.026
FGF.5	-0.823	-0.164	-0.027	-1.365
MMP.1	0.110	0.156	-0.218	0.027
LIF.R	-0.347	-0.009	0.310	-0.358
FGF.21	-0.495	-0.003	0.056	-0.880
CCL19	-0.044	-0.227	-0.156	-0.175
IL.15RA	-1.345	-0.175	0.022	-2.177
IL.10RB	-1.355	-0.389	-0.079	-2.183
IL.22.RA1	-0.073	-0.022	-0.009	-0.254
IL.18R1	-0.208	-0.054	0.175	-0.156
PD.L1	-0.441	-0.195	0.031	-0.702
Beta.NGF	-0.573	-0.458	-0.022	-0.495
CXCL5	-0.014	-0.144	-0.424	-0.042
TRANCE	0.933	0.458	0.236	0.654
HGF	-0.626	-0.333	-0.009	-0.529
IL.12B	0.060	0.058	-0.009	0.038
IL.24	-0.536	-0.218	0.023	-0.618
IL13	-0.007	0.075	0.068	-0.126
ARTN	-1.209	-1.365	-0.618	-1.345
MMP.10	-1.562	-0.967	-0.156	-2.073
IL10	-0.379	-0.377	0.058	-0.270
TNF	-0.643	-0.175	-0.027	-0.932

CCL23	-0.023	-0.218	0.001	0.001
CD5	-0.823	-0.357	-0.036	-0.933
CCL3	-0.933	-0.553	-0.576	-1.490
Flt3L	0.031	-0.009	-0.377	-0.009
CXCL6	-0.156	-0.385	-0.347	-0.385
CXCL10	-0.001	-0.441	-0.012	0.031
X4E.BP1	-0.733	-0.211	0.064	-1.223
IL.20	-0.247	-1.022	-0.270	-0.195
SIRT2	-0.123	-0.164	-0.332	-0.162
CCL28	-2.183	-2.183	-0.737	-2.183
DNER	0.175	0.317	0.332	0.202
EN.RAGE	-0.357	-0.193	-0.166	-0.526
CD40	-0.823	-0.079	0.001	-1.490
IL33	-0.236	-0.164	0.023	-0.287
IFN.gamma	0.218	0.044	0.175	0.270
FGF.19	-0.458	-0.001	-0.036	-1.355
IL4	-0.020	-0.175	-0.027	-0.009
LIF	-1.345	-0.526	-0.573	-1.355
NRTN	0.001	-0.168	-0.036	-0.012
MCP.2	0.319	-0.327	-0.036	1.231
CASP.8	-0.438	-0.377	-0.264	-0.731
CCL25	-0.264	0.025	-0.075	-0.626
CX3CL1	-0.556	-0.164	-0.009	-0.810
TNFRSF9	-1.345	-0.175	-0.012	-2.029
NT.3	-0.012	-0.363	0.009	-0.122
TWEAK	-0.014	0.014	-0.113	-0.012
CCL20	-0.737	-0.576	0.187	-0.823
ST1A1	0.156	-0.025	-0.175	0.068
STAMPB	-0.201	-0.171	-0.175	-0.377
IL5	0.156	-0.009	0.156	-0.009
ADA	-0.259	-0.270	0.175	-0.434
TNFB	0.009	-0.009	-0.036	0.014
CSF.1	-0.458	-0.028	0.012	-0.450

Supplementary Table 7. Clinical characteristics of all SARS-CoV-2 uninfected controls patients who underwent endoscopic biopsies of the GI tract.

Control #	Age*	Sex	Days between negative NP SARS-CoV-2 swab and Procedure	Procedure	Tissue sample location
1	70-75	F	1	EGD	Duodenum
2	60-65	F	1	EGD	Duodenum
3	65-70	M	2	EGD & colonoscopy	Duodenum
4	40-45	M	1	EGD	Duodenum
5	65-70	M	1	EGD	Duodenum
6	70-75	M	1	EGD	Duodenum
7	65-70	F	1	EGD	Duodenum
8	70-75	F	2	EGD	Duodenum
9	50-55	M	1	EGD	Duodenum
10	75-80	F	1	Colonoscopy	Ileum

* Age is provided as a range to obscure identifying information related to individuals

Abbreviations: EGD = Esophagogastroduodenoscopy, F = Female, M = Male

Supplementary Table 8. Clinical characteristics of COVID-19 patients including their symptoms on presentation, co-morbidities and treatment regimens.

Patient #	Clinical setting	Symptoms on presentation	Other symptoms / findings / complications	Highest level of oxygen required	COVID-19 Treatments
1	Inpatient -ICU	CVA	Pneumonia on imaging	Mechanical ventilation	HCQ and azithromycin
2	Inpatient -ICU	Fever, shortness of breath, vomiting and diarrhea		Room air	HCQ (given prior to admission at MSH) and steroids
3	Inpatient -non-ICU	Diarrhea and altered mental status	UTI, choledocholithiasis	Room air	Supportive care
4	Inpatient -ICU	Fever, cough, shortness of breath, abdominal pain	Cardiac arrest	Mechanical ventilation	HCQ, azithromycin, Remdesivir and therapeutic AC
5	Inpatient -non-ICU	Fever, nausea, vomiting and shortens of breath		HFNC	Steroids and therapeutic AC
6	Outpatient	Asymptomatic at time of procedure, tested for procedure	Subsequently developed CVA	Room air	Therapeutic AC
7	Inpatient -non-ICU	Asymptomatic at time of procedure, tested for procedure	Dysphagia	Room air	Supportive care
8	Inpatient -ICU	Shortness of breath, altered mental status	UTI, bacteremia	HFNC	HCQ, steroids, therapeutic AC
9	Inpatient -ICU	Shortness of breath		Mechanical ventilation	HCQ, azithromycin, steroids, therapeutic AC and convalescent plasma
10	NA	NA	NA	NA	NA
11	Inpatient -non-ICU	Shortness of breath, altered mental status	acute on chronic renal failure requiring HD	HFNC / BiPAP	HCQ, azithromycin, and steroids
12	Outpatient	Fatigue, myalgias, cough		Room air	Supportive care
13	Outpatient	Chills, fever	Epigastric pain radiating to back	Room air	Supportive care
14	Inpatient -ICU	Shortness of breath, generalized weakness		Mechanical ventilation	HCQ, azithromycin, steroids, therapeutic AC, convalescent plasma
15	Inpatient -non-ICU	Shortness of breath, abdominal pain		Room air	Supportive care
16	Outpatient	Myalgias	Obstructive jaundice	Room air	Supportive care
17	Outpatient	Asymptomatic at time of procedure, tested for procedure		Room air	Supportive care
18	Inpatient -non-ICU	Abdominal pain	Jaundice, UTI	Room air	Supportive care

Abbreviations: CVA = cerebrovascular accident, DM = diabetes mellitus, HCQ = hydroxychloroquine, HIV = human immunodeficiency virus, UTI = urinary tract infection, HFNC = high flow nasal cannula, MS = multiple sclerosis, CAD = coronary artery disease, HTN = Hypertension, Afib = atrial fibrillation, ESRD = end-stage renal disease, COPD = chronic obstructive pulmonary disease

Supplementary Table 9. Histopathological characteristics of COVID-19 cases.

Patient #	Tissue used for IF	Viral protein detected by IF?	Increased IELs	Neutrophils	Other histopathologic abnormalities	Viral particles detected on EM?	Other potential reasons for inflammation
2	Duodenum, ileum	yes (ileum and duodenum)	no	yes (ileum)	inflammation in ileum	not done	transplant rejection (s/p intestinal transplant)
3	None available	N/A	yes (duodenum)	yes (mild, duodenum)	none	yes	HIV
4	Duodenum	yes	borderline	no	none	yes	none
5	None available	N/A	no	no	epithelial damage, villous blunting and reactive foveolar metaplasia	no	none
6	Duodenum	yes	no	yes	epithelial damage and foveolar metaplasia	no	Invasive adenocarcinoma in the duodenum
7	Duodenum	yes	yes	yes (mild)	none	not done	esophageal cancer
8	None available	N/A	borderline	yes (mild)	none	no	none
9	Duodenum	yes	borderline	yes (mild)	epithelial damage	yes	none
11	None available	N/A	no	no	none	yes	none
12	Ileum	yes	no	no	none	yes	none
13	Duodenum	no	borderline	no	none	yes	stage IV pancreatic cancer
15	Duodenum	yes	borderline	no	none	no	choledocholithiasis
16	Duodenum	yes	no	no	none	no	biliary stricture
17	Duodenum	yes	no	no	none	no	none
18	Duodenum	yes	patchy	yes (mild)	none	no	Biliary stricture c/f cholangiocarcinoma

Histologic information in reference to tissue used for IF unless otherwise indicated

Supplementary Table 10. Histopathological characteristics of pre-pandemic controls.

Patient	Age*	Sex	Tissue for IF	Reason for procedure	Medications
1	50-55	M	duodenum	epigastric pain	famotidine, ranitidine, azelastine-fluticasone, ipratropium bromide, levocetirizine, azelastine, omeprazole
2	65-70	F	duodenum and ileum	abdominal pain	none
3	80-85	F	duodenum	dysphagia	fluticasone-salmeterol, guaifenesin, albuterol, sennosides, Montelukast, losartan, amlodipine, acetaminophen, glipizide, atenolol, atorvastatin
4	75-80	F	duodenum	abdominal pain	losartan, aspirin, ferrous sulfate, metformin, omeprazole, pravastatin
5	75-80	F	duodenum	weight loss	spironolactone, apixaban, folic acid, torsemide, fluticasone
6	30-35	M	ileum	iron deficiency anemia	metformin, hydrochlorothiazide, enalapril
7	55-60	M	ileum	abdominal pain	divalproex, atorvastatin, benazepril, carvedilol, linagliptin, ondansetron, lamotrigine, lithium, rabeprazole, risperidone, alprazolam, oxycodone, glimepiride, allopurinol
8	4-45	M	ileum	rectal bleeding	none
9	50-55	F	ileum	CRC screening	acyclovir, acetaminophen
10	20-25	F	ileum	abdominal pain	none

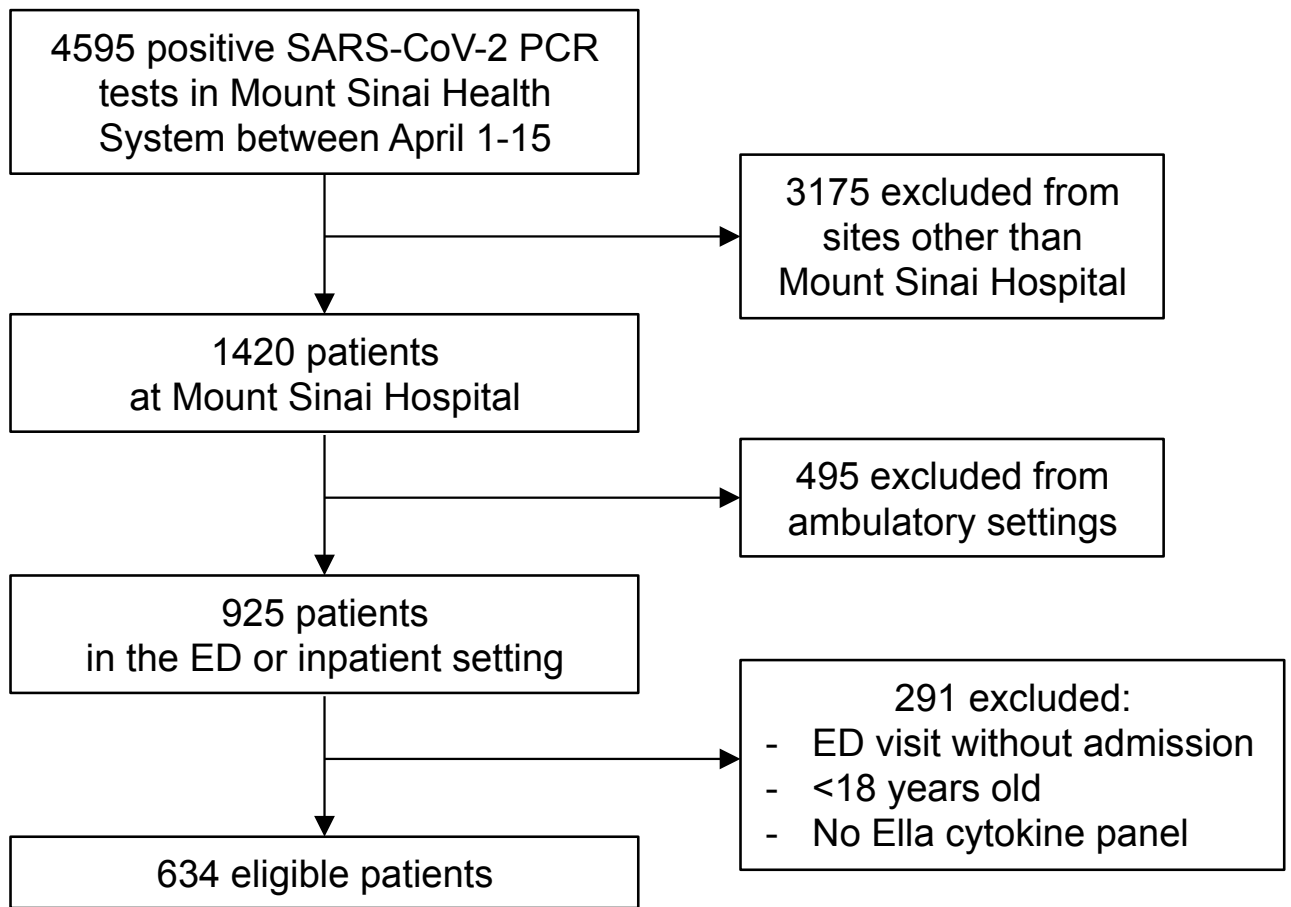
GERD, gastroesophageal reflux disease; HLD, hyperlipidemia; MVP, mitral valve prolapse; DM2, diabetes mellitus type 2; OA, osteoarthritis; HTN, hypertension; COPD, chronic obstructive pulmonary disease; CAD, coronary artery disease; Afib, atrial fibrillation; CHF, congestive heart failure; OSA, obstructive sleep apnea; IBS, irritable bowel syndrome.

* Age is provided as a range to obscure identifying information related to individuals

Supplementary Table 11. List of antibodies used for microscopy studies.

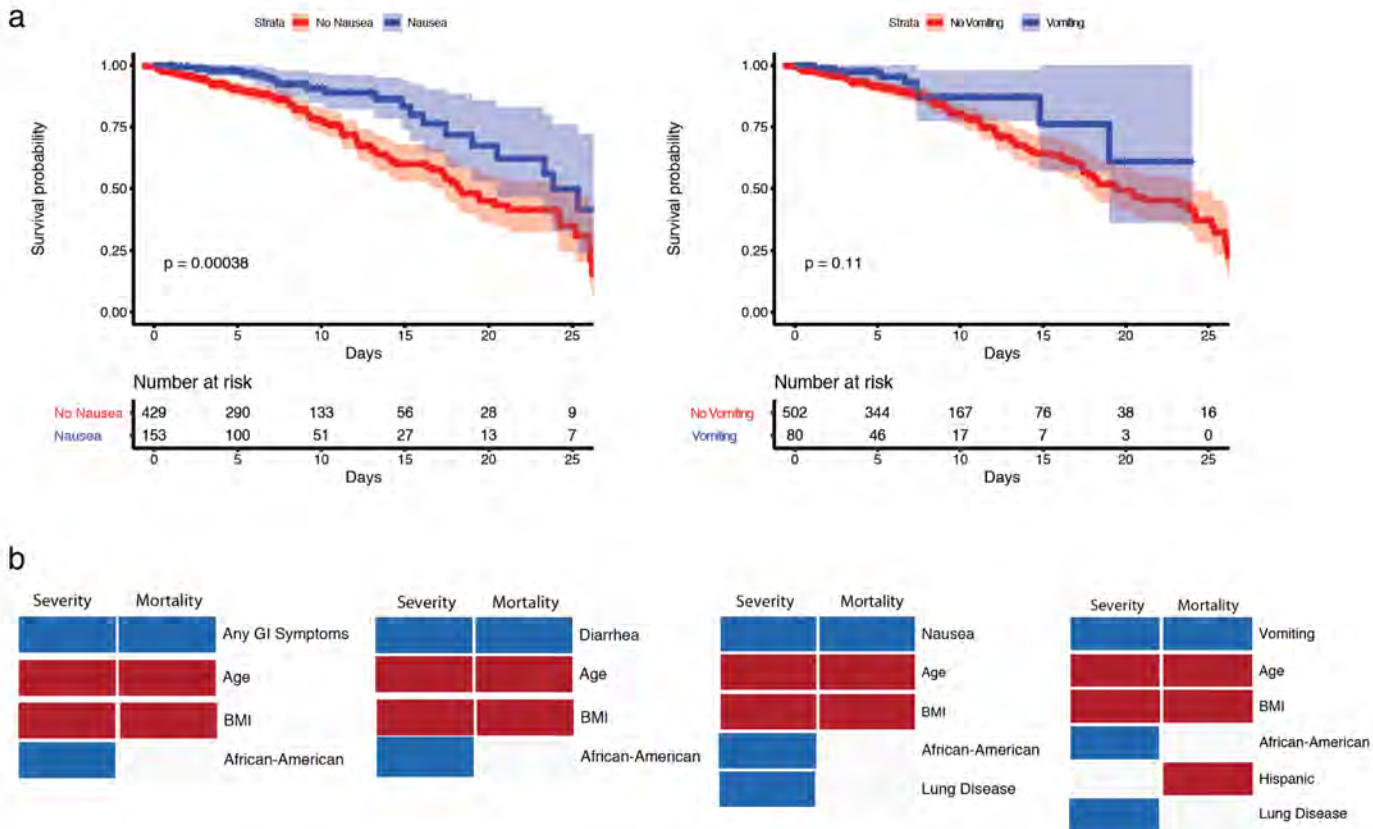
Antigen	Clone	Vendor	Catalogue number	Host	Conjugation	Dilution
ACE2	Polyclonal	Abcam	ab15348	rabbit	Unconjugated	1:1000
EPCAM	SPM491	GeneTex	GTX34693	mouse	Unconjugated	1:100
SARS-CoV-2 nucleocapsid	Polyclonal	N/A*	N/A	rabbit	Unconjugated	1:2000
No known specificity (isotype control)	Polyclonal	Abcam	ab37415	rabbit	Unconjugated	variable
Yeast GAL4 (isotype control)	15-6E10A7	Abcam	ab170190	mouse	Unconjugated	variable
Mouse IgG H&L	Polyclonal	Abcam	ab150116	goat	Alexa Fluor 488	1:1000
Rabbit IgG H&L	Polyclonal	Abcam	ab150077	goat	Alexa Fluor 594	1:1000

Supplementary Figure 1.



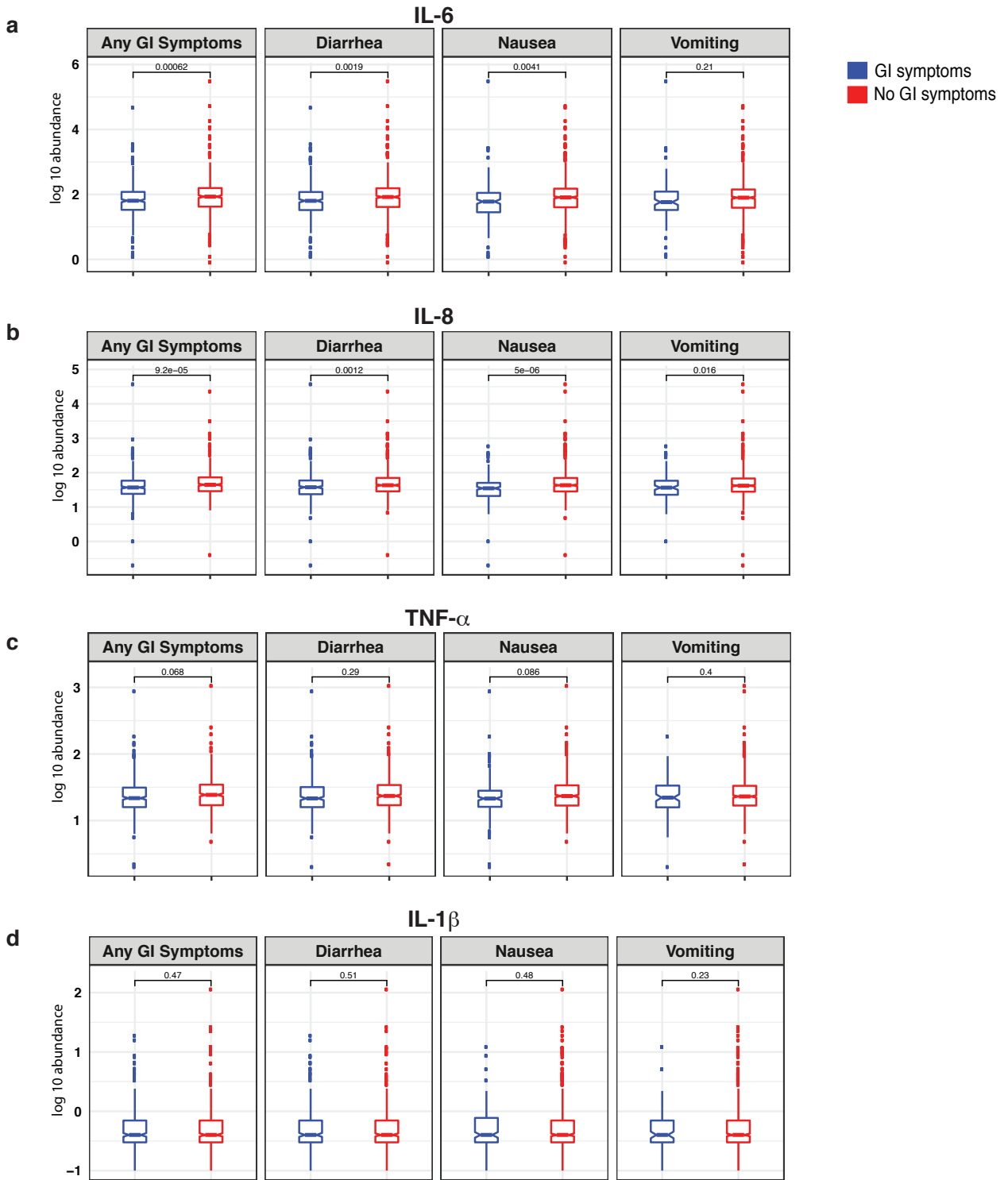
Flow diagram of the discovery cohort. The diagram shows the total number of patients with a positive SARS-CoV-2 nasopharyngeal swab in the Mount Sinai Health System between April 1-15, 2020 and the selection process that was adopted in order to select patients in the discovery cohort.

Supplementary Figure 2.



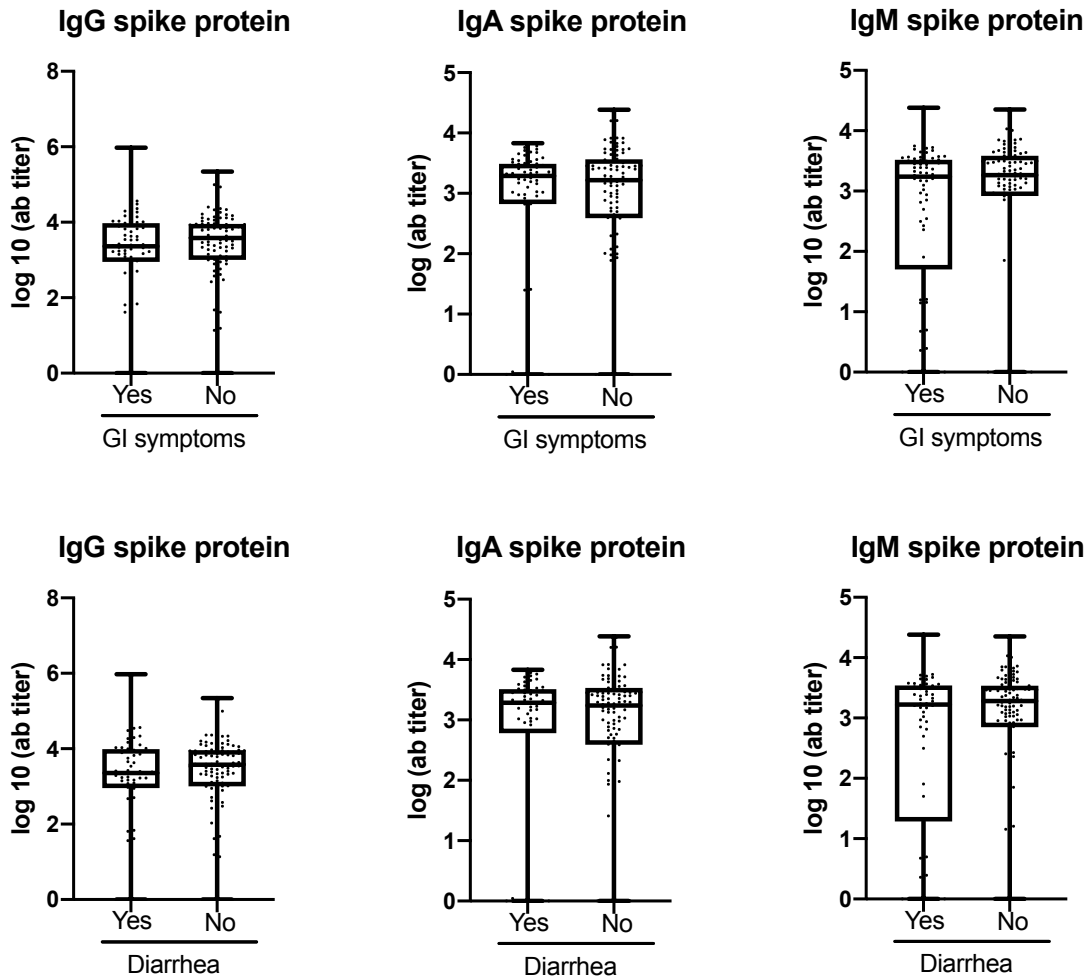
GI symptoms associated with reduced mortality and severity. **a**, Kaplan-Meier curves for mortality stratified by nausea (left panel) and vomiting (right panel) for patients in the discovery cohort. P-values from log-rank test and 95% confidence intervals of Kaplan-Meier curves are shown. Below each Kaplan-Meier, the number of patients at risk for different time points are reported. **b**, Significant variables associated with severity and mortality. Significant associations were derived via 95% confidence intervals based on 1000 bootstrap iterations. Negative associations are displayed in blue; while positive associations in red. Severity and mortality were modeled as function of any GI symptoms or an individual GI symptom (diarrhea, nausea, vomiting) and covariates including age, gender, race/ethnicity, BMI, hypertension, diabetes, lung and heart diseases.

Supplementary Figure 3.



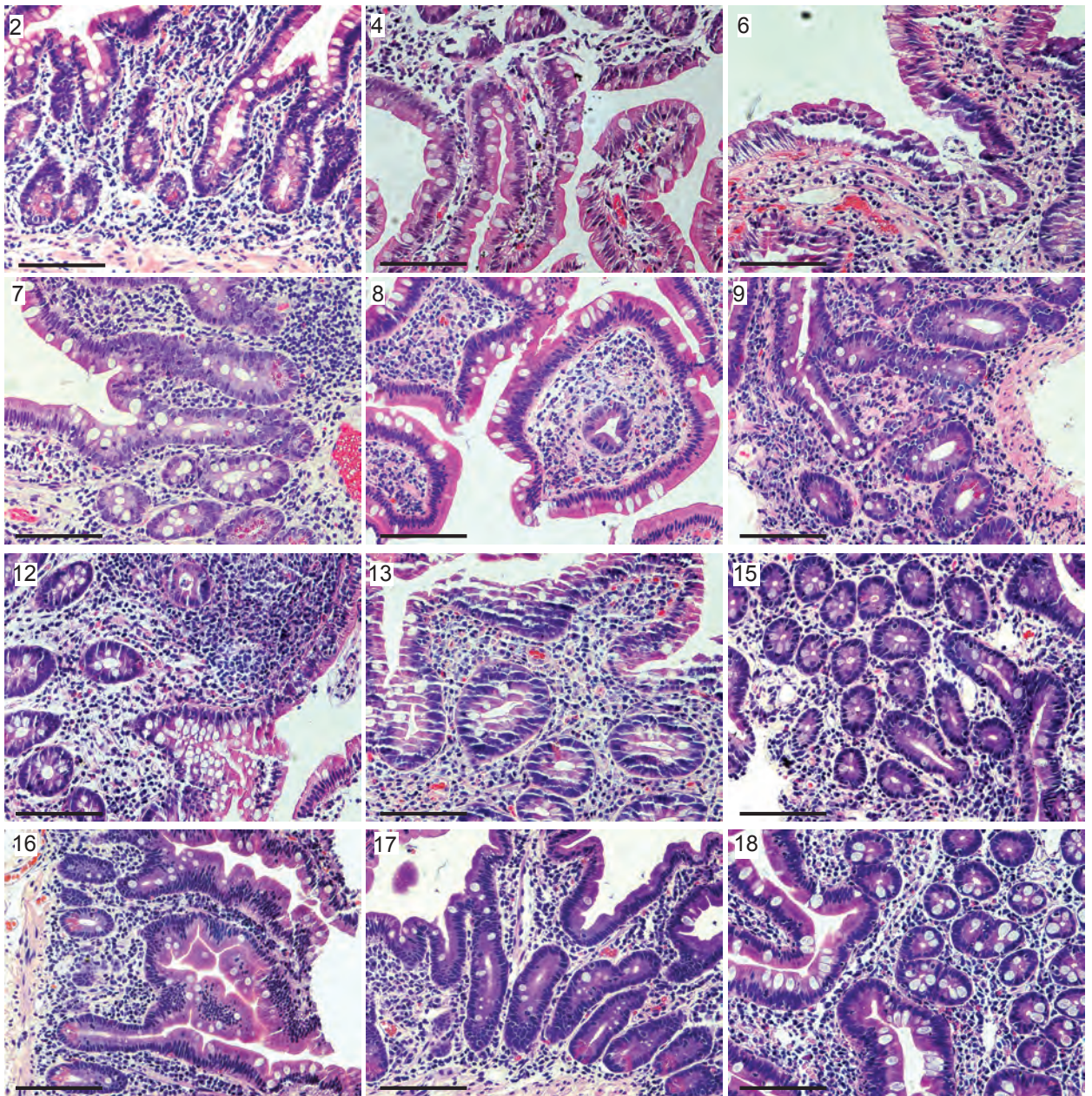
COVID-19 patients with GI symptoms have reduced levels of circulating IL-6 and IL-8. a, IL-6, b, IL-8, c, TNF- α , and d, IL-1 β at the time of admission in patients with and without GI symptoms. Boxplots represent the median and interquartile range. P-values calculated using unpaired t-test.

Supplementary Figure 5.



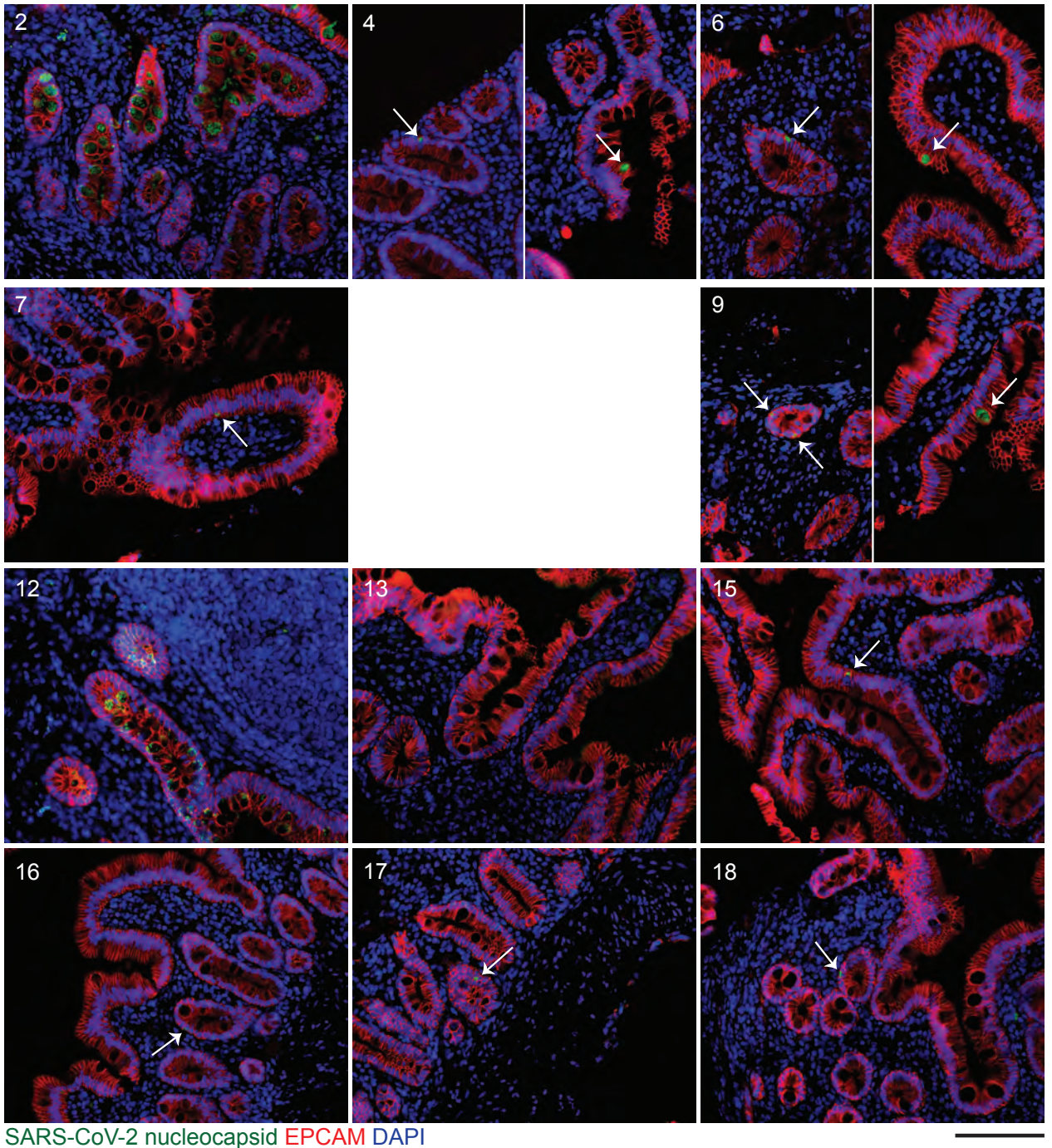
Comparison of anti-spike immunoglobulin subsets. Anti-spike protein IgG, IgA and IgM antibodies were compared between COVID-19 patients with any GI symptoms or not (top row) and, presence of diarrhea or not (bottom row). Mann-Whitney tests used to compare between the groups.

Supplementary Figure 6.



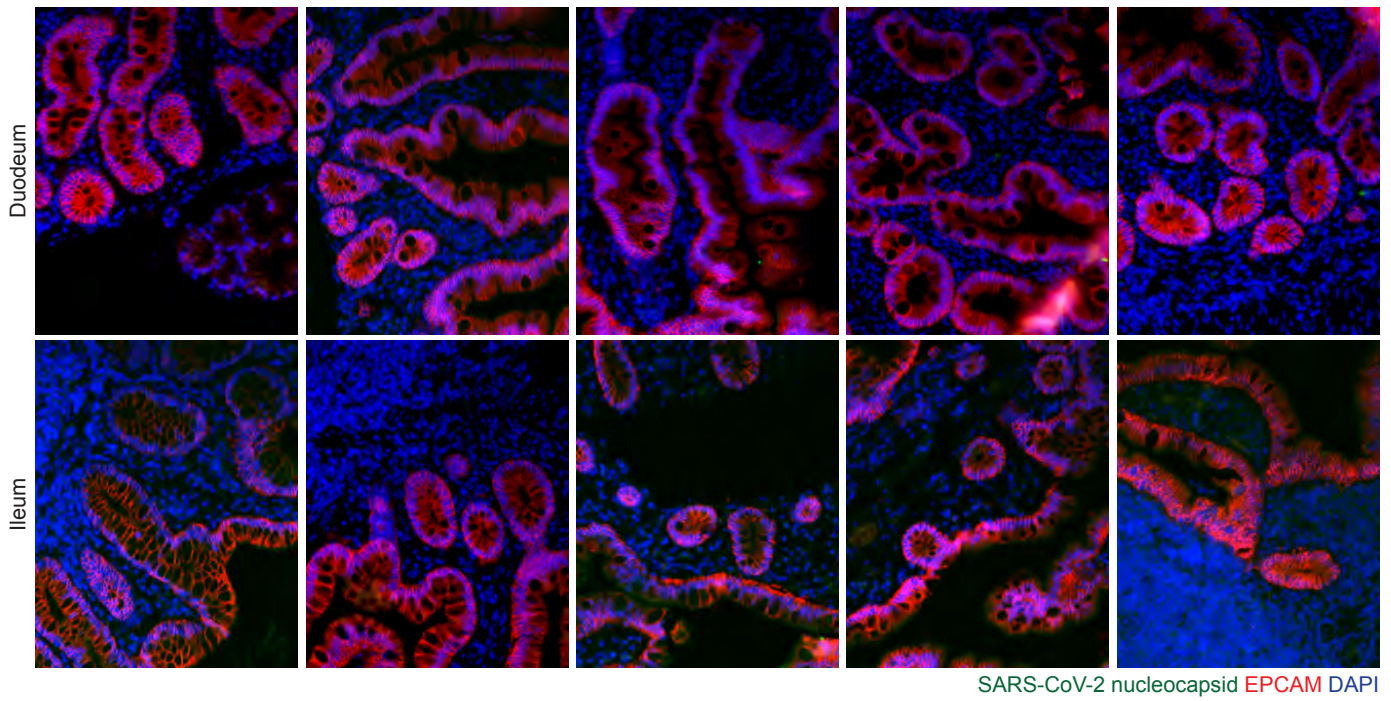
Representative H&E staining of small intestinal biopsies of COVID-19 patients. Patient number in the top left corner corresponds with the patient number in Supplementary Table 10. All biopsies are duodenal with the exception of patient 12 which is of terminal ileum. Scale bar; 100 μ m.

Supplementary Figure 7.



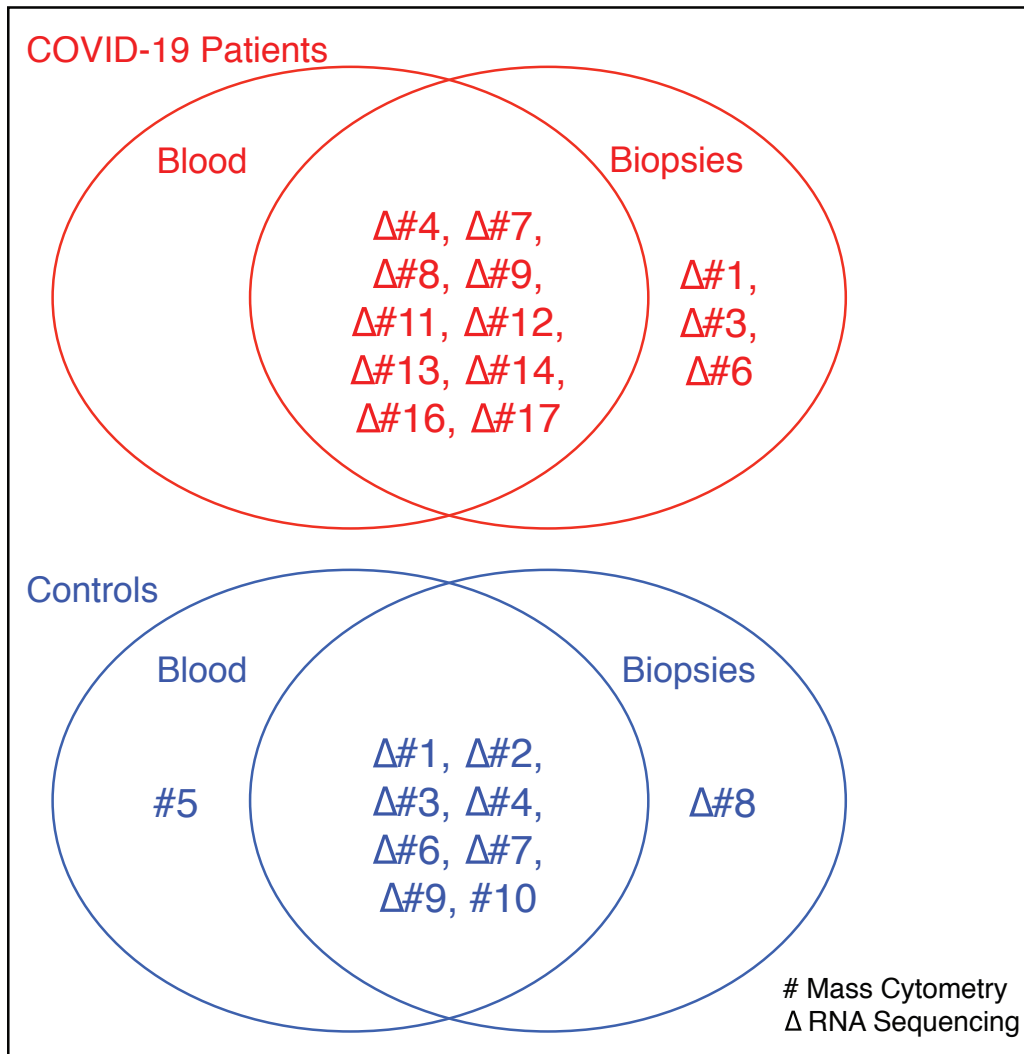
Representative IF of small intestinal biopsies of COVID-19 patients. SARS-CoV-2 nucleocapsid (green), EPCAM (red) and DAPI (blue) in all COVID-19 patients where tissue was available for IF. Patient number in the top right corner corresponds with the patient number in Supplementary Table 10. All biopsies are duodenal with the exception of patient 12 which is of terminal ileum. Patient 8 missing due to technical difficulties during IF staining. Scale bar; 100 μ m.

Supplementary Figure 8.



Representative IF of small intestinal biopsies of control patients. SARS-CoV-2 nucleocapsid (green), EPCAM (red) and DAPI (blue) in duodenal biopsies (upper) and ileal biopsies (lower). Scale bar; 100 μ m.

Supplementary Figure 9.

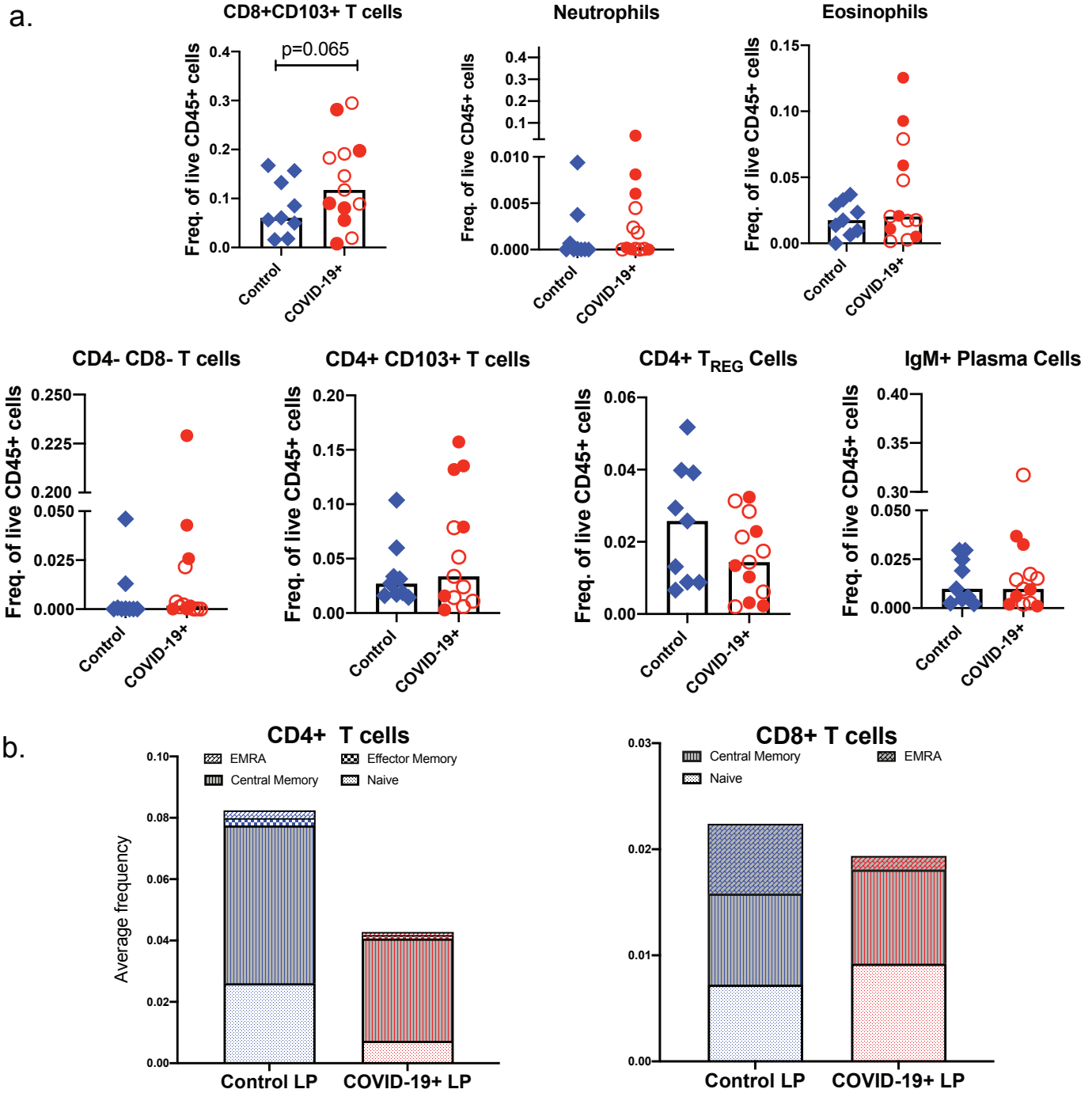


Assays	Sample	COVID-19 cases	Controls
Mass Cytometry	Biopsy	13	9
	Blood	10	9
RNA Sequencing	Biopsy	13	8
	Blood	N/A	N/A

Sample allocation for different assays in COVID-19 patients and controls. Venn diagrams showing blood and biopsy samples used for mass cytometry (#) and RNA sequencing (Δ) in COVID-19 patients (red) and controls (blue). The numbers in the Venn diagrams refer to respective patient and control cases in Table 6 and Supplementary Table 7.

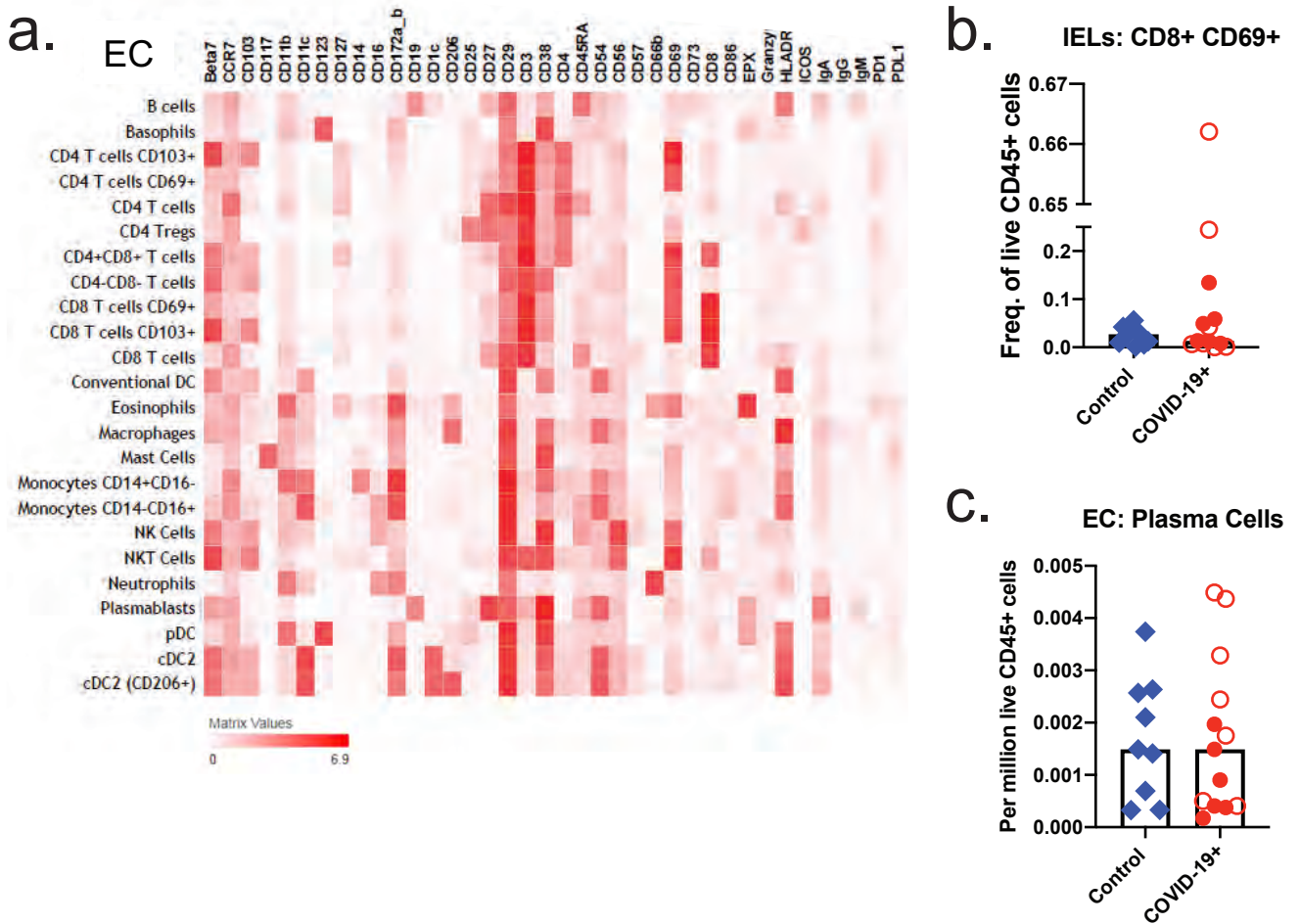
Table (below) summarizes the total number of blood and biopsy samples allocated for mass cytometry and RNA sequencing.

Supplementary Figure 10.



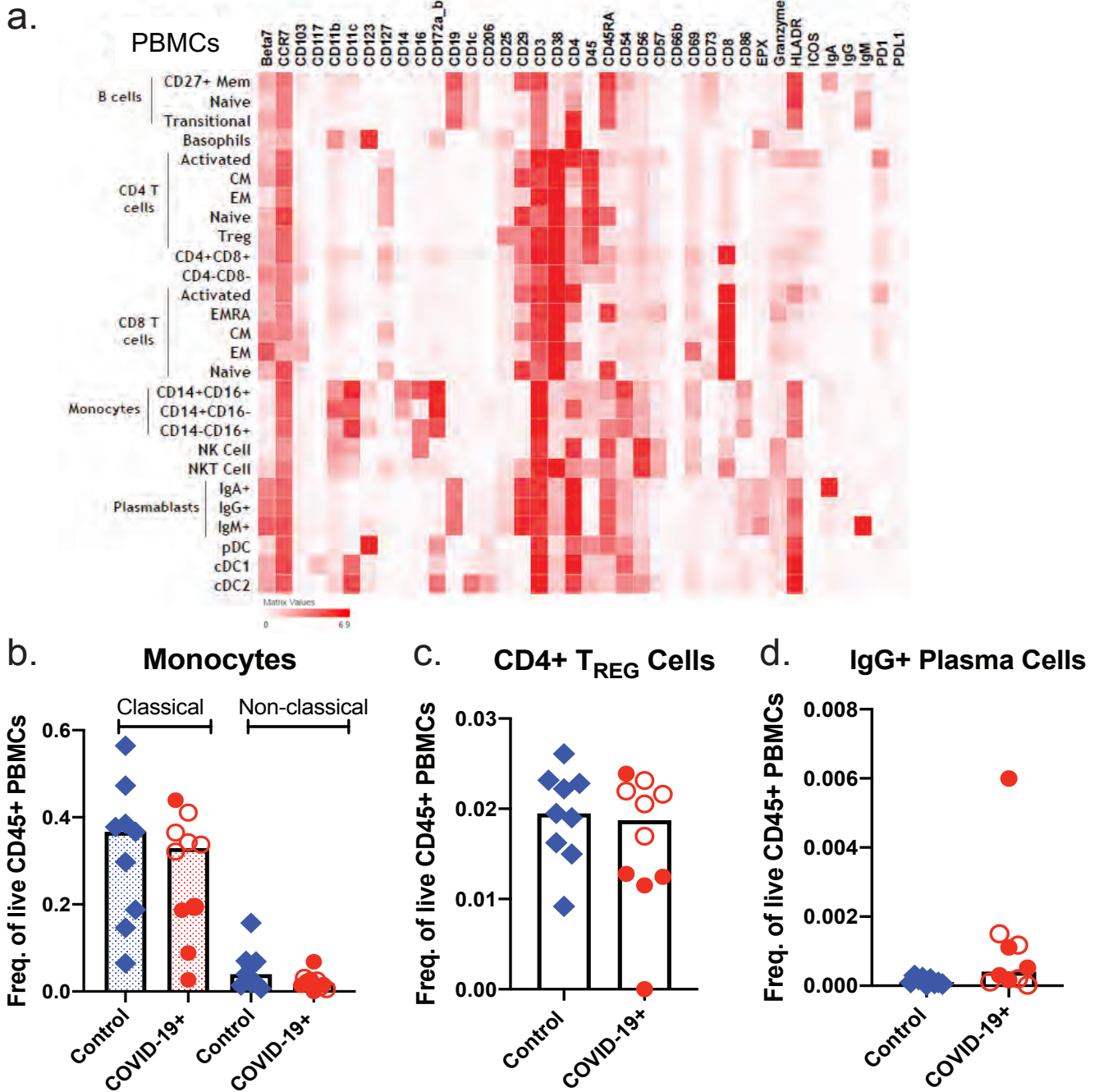
Altered immune populations in the lamina propria of COVID-19 patients compared to controls. **a**, The bar plots show the distribution of different immune cells in lamina propria of COVID-19 patients (red) and controls (blue). Open red circles denote patients with asymptomatic/mild/moderate disease while filled red circles denote patients with severe COVID-19. **b**, The stacked frequency bar graphs show the distribution of naïve and memory CD4+ and CD8+ T cells in the lamina propria of COVID-19 patients and controls.

Supplementary Figure 11.



Altered immune populations in the epithelial compartment of COVID-19 patients compared to controls. **a**, The heat map shows clustering and distribution of different cell types in the epithelial compartment (EC). **b-c**, The bar plots show distribution of intraepithelial lymphocytes (IELs) (**b**) and plasma cells (**c**) in the EC of COVID-19 patients and controls. Open red circles denote patients with asymptomatic/mild/moderate disease while filled red circles denote patients with severe COVID-19.

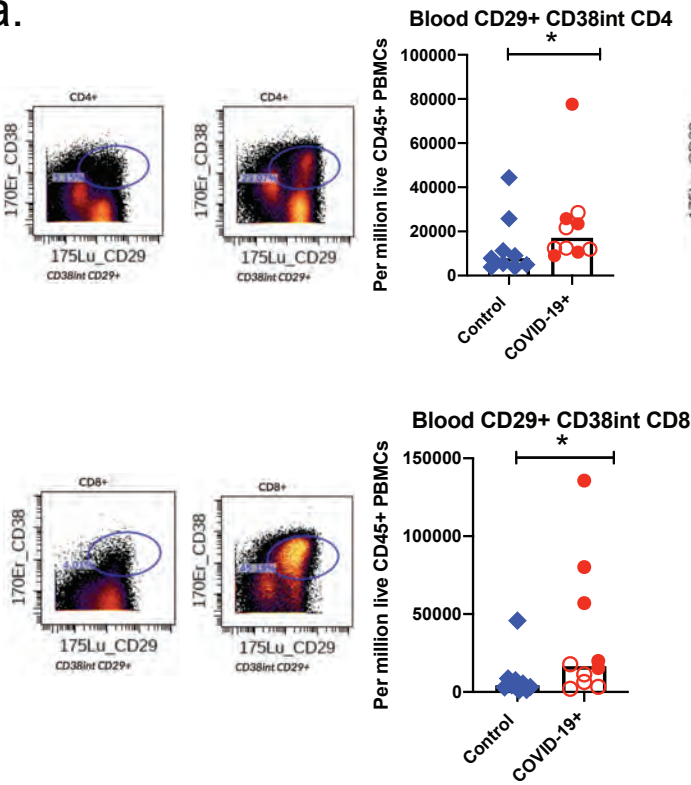
Supplementary Figure 12.



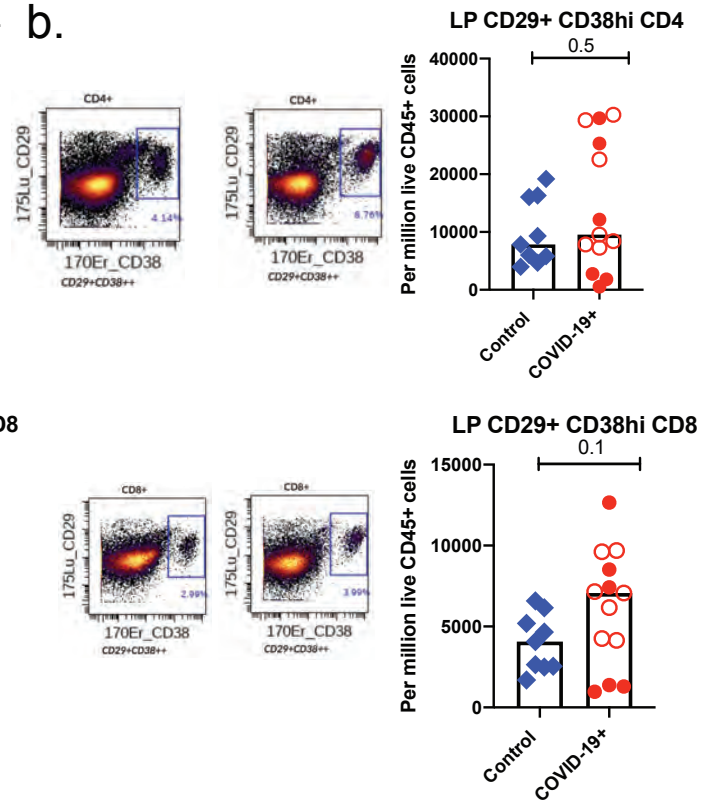
Altered immune populations in the blood of COVID-19 patients compared to controls.
a. The heat map shows clustering and distribution of different immune cell types in blood. **b.** The bar plots show distribution of classical (dotted bars) and non-classical monocytes; and **c-d.** the bar plots show the distribution of CD4+ regulatory T cells and IgG+ plasma cells in the blood of COVID-19 patients and controls. Open red circles denote patients with asymptomatic/mild/moderate disease while filled red circles denote patients with severe COVID-19.

Supplementary Figure 13.

a.

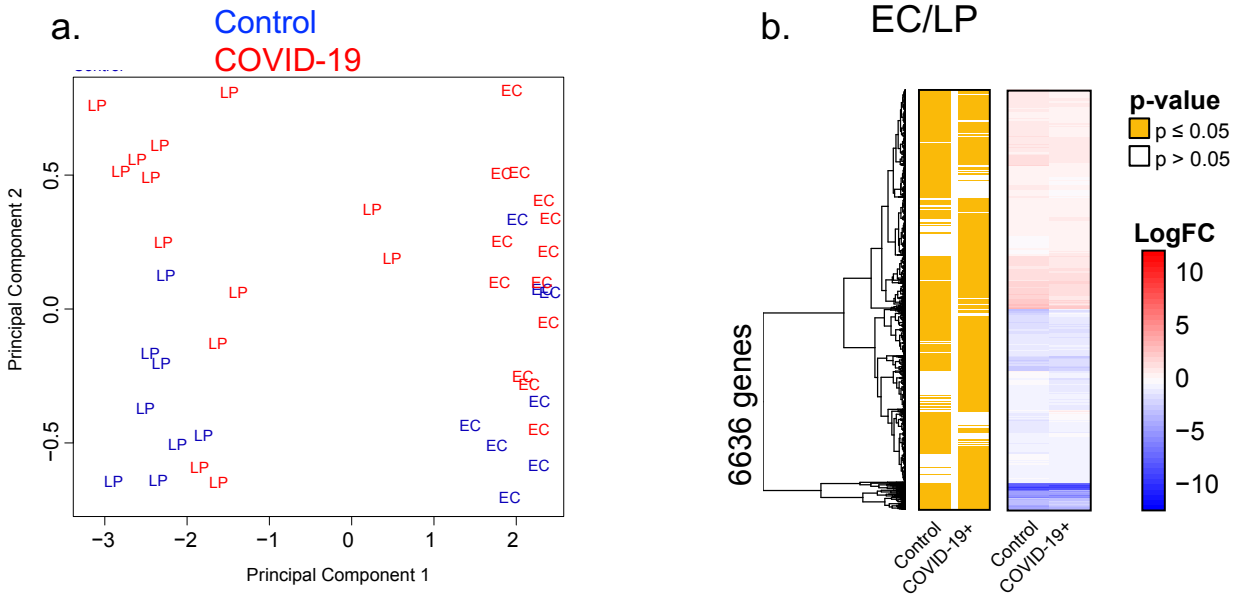


b.



Altered T cell populations in blood and intestinal biopsies of COVID-19 patients compared to controls based on manual gating of the populations. Representative raw plots and comparative bar plots showing changes in CD29 +(β 1) CD38+ CD4+ and CD29+(β 1) CD38+ CD8+ T cells in (a) blood and (b) lamina propria of controls (blue) and COVID-19 patients (red). Open red circles denote patients with asymptomatic/mild/moderate disease while filled red circles denote patients with severe COVID-19.

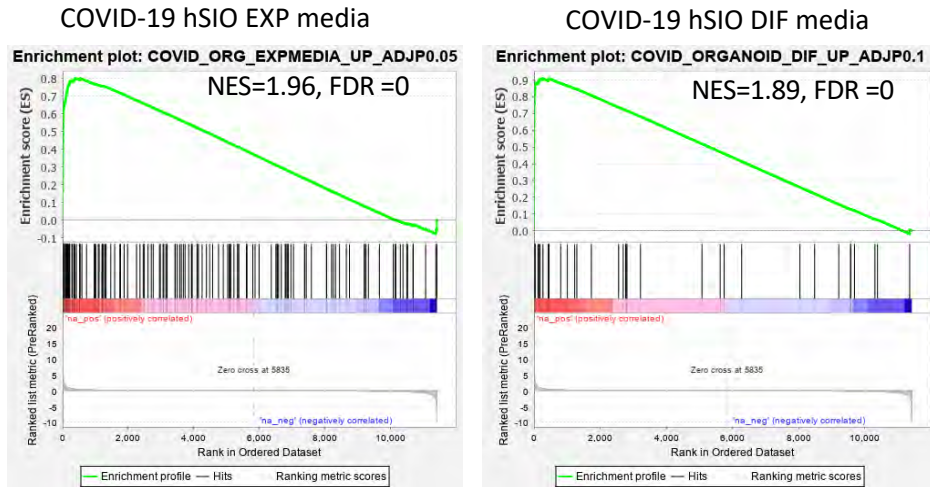
Supplementary Figure 14.



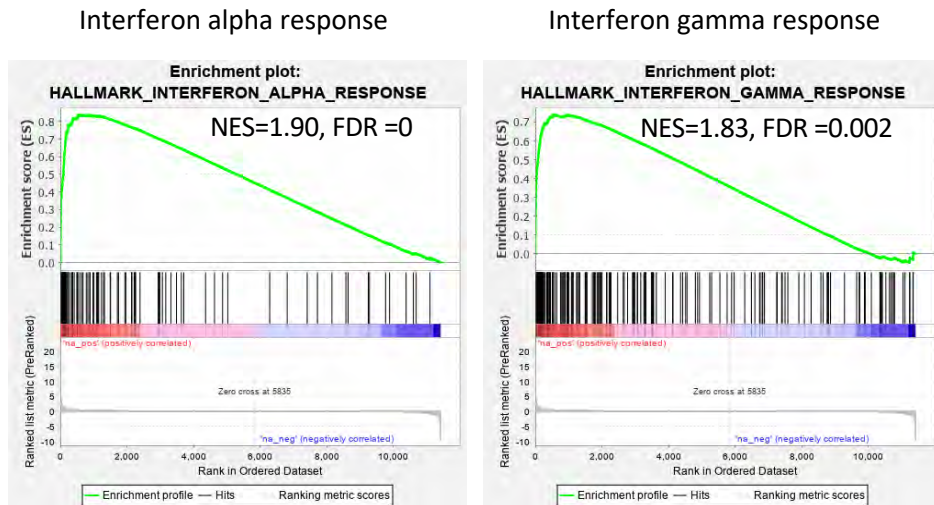
Expression profiles of tissue fractions indicating the distinctness of both the intestinal compartments, epithelial compartment and lamina propria. **a**, Principal Component Analysis (PCA) of epithelial compartment (EC) and lamina propria (LP) fractions of COVID-19 patients and controls. The two types of tissue fractions separate on the principal component 1 (x-axis). **b**, Hierarchical clustering of average expression changes for 6636 genes (rows) characterizing the EC (red) or LP (blue) fractions ($FDR \leq 0.05$) in the intestinal biopsies of COVID-19 patients and controls. The panel on the left indicates significant genes for each tissue section in yellow. The color bar indicates the average log₂ fold-change (FC).

Supplementary Figure 15.

a. GSEA: COVID-19 infected organoid models



b. GSEA: Hallmark Pathways



Immune signature in the epithelial fraction. A Gene Set Enrichment Analysis (GSEA) was performed using a rank ordered list of genes differentially expressed in the infected Epithelial Compartment (EC) vs control EC comparison. The metric for ranking was $\log_{FC}^* - \log Pvalue$ and the gene sets in panel **a** that were tested included, molecular signatures curated from COVID-19 infected organoid experimental datasets including hSIOs-COVID-19: human small intestinal organoids (hSIOs) grown in either i) Wnt high expansion (EXP) medium (at $\text{adj}P < 0.05$) or ii) differentiation (DIF) medium (at $\text{adj}P < 0.1$). Only gene sets associated with up-regulated gene sets were found significantly enriched (at $\text{FDR} < 0.05$). **b**, GSEA was performed for the same rank ordered EC gene set using the Hallmark Pathway datasets. Only two significantly enriched pathways associated with genes higher expressed in infected EC relative to control (at $\text{FDR} < 0.05$) were observed. Normalized enrichment score (NES) and FDR values are as indicated.