

Online Data Supplement:

An epithelial microRNA upregulates airway IL-25 and TSLP expression in type 2-high asthma via targeting CD39-extracellular ATP axis

Kan Zhang^{1,2}, Yuchen Feng^{1,2}, Yuxia Liang^{1,2}, Wenliang Wu^{1,2}, Chenli Chang^{1,2},

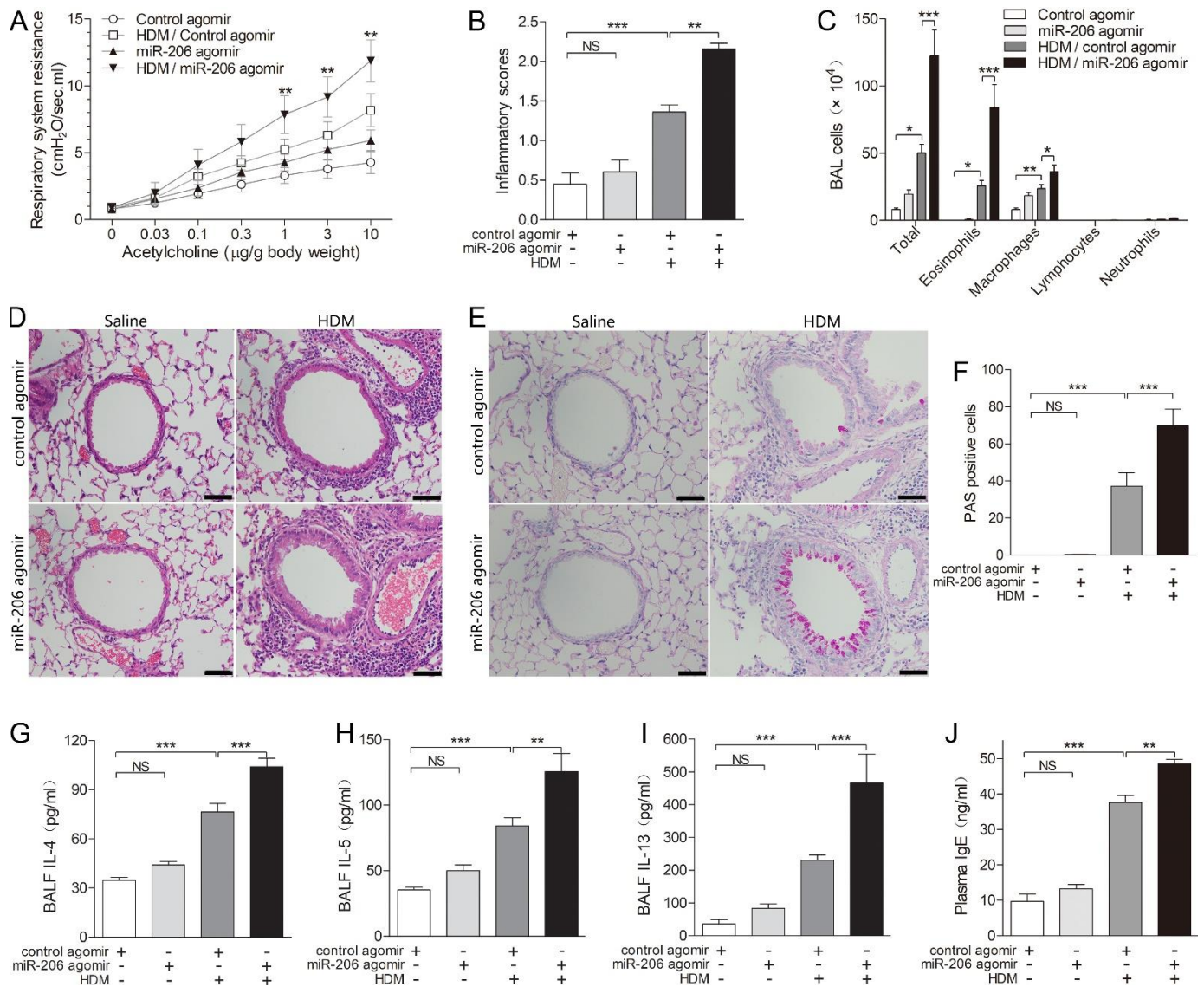
Dian Chen^{1,2}, Shengchong Chen^{1,2}, Lingling Yi^{1,2}, Guohua Zhen^{1,2}

¹Division of Pulmonary and Critical Care Medicine, Department of Internal Medicine, Tongji Hospital, Tongji Medical College, Huazhong University of Science and Technology, Wuhan, China; ²Key Laboratory of Respiratory Diseases, National Health Commission of People's Republic of China, and National Clinical Research Center for Respiratory Diseases, Wuhan, China.

Supplementary Table. Primers for quantitative PCR

Gene	Species	Type	Sequence
<i>β-actin</i>	Human	Forward	GCAAGCAGGACTATGACGAG
		Reverse	CAAATAAAGCCATGCCAATC
<i>CD39</i>	Human	Forward	ACTATCGAGTCCCCAGATAATGC
		Reverse	CCTGATCCTTCCCATAGCACAA
<i>CLCA1</i>	Human	Forward	ATGGCTATGAAGGCATTGTCTG
		Reverse	TGGCACATTGGGGTCTGATTG
<i>GAPDH</i>	Human	Forward	AAGGTGAAGGTCGGAGTCAAC
		Reverse	GGGGTCATTGATGGCAACAATA
<i>POSTN</i>	Human	Forward	GACCGTGTGCTTACACAAATTG
		Reverse	AAGTGACCGTCTCTTCCAAGG
<i>SERPINB2</i>	Human	Forward	TCCTGGGTCAAGACTCAAACC
		Reverse	CATCCTGGTATCCCCATCTACA
<i>β-actin</i>	Mouse	Forward	GGCTGTATTCCCCTCCATCG
		Reverse	CCAGTTGGTAACAATGCCATGT
<i>Gapdh</i>	Mouse	Forward	TGGCCTTCCGTGTTCTTAC
		Reverse	GAGTTGCTGTTGAAGTCGCA
<i>Cd39</i>	Mouse	Forward	AGATGAAATCGGTGCGTACCT
		Reverse	GAGTCTGGTGATGCTTGGATG

Supplementary Figure and Figure Legend:



Supplementary Figure. Overexpression of airway miR-206 expression aggravates HDM-induced AHR, airway inflammation, mucus overproduction and type 2 response in mice. (A) Respiratory resistance in response to different concentration of intravenous acetylcholine at 24 h after the last HDM or saline challenge in mice intranasally administered with control or miR-206 agomir. (B) Inflammatory scores of lung sections from mice intranasally administered with control or miR-206 agomir and

challenged with HDM or saline were calculated as described in Methods. (C) Counts for macrophages, eosinophils, lymphocytes and neutrophils in BALF. (D) H&E staining of representative lung sections. (E) PAS staining for mucus in representative lung sections. (F) The numbers of PAS-staining-positive cells were counted in four random fields for each lung section at $\times 200$ magnification. (G-I) The protein levels of IL-4 (G), IL-5 (H), IL-13 (I) in BALF were determined by ELISA. (J) Plasma IgE levels in peripheral blood were determined by ELISA. $n = 6-10$ mice per group combined from 2 experiments. Data are mean \pm SD. * $P < 0.05$; ** $P < 0.01$; *** $P < 0.001$ (one-way ANOVA with Bonferroni's post hoc test). Scale bar = 50 μm .