

Supporting information

Maternal obesity and metabolic disorders associate with congenital heart defects in the offspring: a systematic review

Gitte Hedermann*¹, Paula L Hedley¹, Ida N Thagaard^{1,2}, Lone Krebs^{3,4}, Charlotte Kvist Ekelund^{4,5}, Thorkild IA Sørensen^{6,7}, Michael Christiansen^{1,8}

¹ Department for Congenital Disorders, Danish National Biobank and Biomarkers, Statens Serum Institut, Copenhagen, Denmark

² Department of Obstetrics and Gynaecology, Copenhagen University Hospital, Rigshospitalet, Copenhagen, Denmark

³ Department of Obstetrics and Gynaecology, Copenhagen University Hospital, Amager and Hvidovre Hospital, Copenhagen, Denmark

⁴ Department of Clinical Medicine, University of Copenhagen, Copenhagen, Denmark

⁵ Center of Fetal Medicine, Department of Obstetrics, Copenhagen University Hospital, Rigshospitalet, Copenhagen, Denmark

⁶ Department of Public Health, Section of Epidemiology, University of Copenhagen, Copenhagen, Denmark

⁷ The Novo Nordisk Foundation Center for Basic Metabolic Research, Faculty of Health and Medical Sciences, University of Copenhagen, Copenhagen, Denmark

⁸ Department of Biomedical Sciences, University of Copenhagen, Copenhagen, Denmark

Corresponding author*: Department for Congenital Disorders, Danish National Biobank and Biomarkers
Statens Serum Institut, Artillerivej 5, 2300 Copenhagen, Denmark
gihc@ssi.dk

Table of Contents		Page
Search protocol	Table S1	3-7
Newcastle-Ottawa Quality Assessment Scale	Table S2	8-10
Characteristics of included studies	Table S3	11-12
Maternal metabolic disorders and risk of ... in the offspring		
Heterotaxia	Fig. S1	13
Univentricular heart	Fig. S2	14
Conotruncal defects	Fig. S3	15
Common truncus	Fig. S4	16
Transposition of the great arteries	Fig. S5	17
Tetralogy of Fallot	Fig. S6	18
Double outlet right ventricle	Fig. S7	19
Aortic arch defects	Fig. S8	20
Atrioventricular septal defects	Fig. S9	21
Anomalous pulmonary venous return	Fig. S10	22
Left ventricular outflow tract defects	Fig. S11	23
Hypoplastic left heart syndrome	Fig. S12	24
Coarctation of the Aorta	Fig. S13	25
Aortic stenosis	Fig. S14	26
Right ventricular outflow tract defects	Fig. S15	27
Pulmonary valve stenosis	Fig. S16	28
Ebstein's anomaly	Fig. S17	29
Septal defects	Fig. S18	30
Atrial septal defects	Fig. S19	31
Ventricular septal defects	Fig. S20	32

Abbreviations:

ABDCCS, Atlanta Birth Defect Case-Control Study; BDRFSS, Birth Defects Risk Factor Surveillance Study; BMI, body mass index; CHDs, congenital heart defects; CM, congenital malformations; CSL, The Consortium of Safe Labor; DM1, diabetes mellitus type 1; DM2, diabetes mellitus type 2; GDM, gestational diabetes mellitus; NBDPS, National Birth Defects Prevention Study; NOS, Newcastle Ottawa Scale; OR, odds ratio; PE, preeclampsia; PGDM, pre-gestational diabetes; PR, prevalence ratio; RR, risk ratio.

Table S1: Search protocol

PubMed and Embase: Publications between January 1, 1990 and October 6, 2019.

Maternal overweight or obesity or metabolic syndrome and CHDs in offspring

PubMed Search Strategy

	Aspect 1	Aspect 2	Aspect 3
MeSH	Heart defects, congenital	Body Mass Index OR Overweight OR Adiposity OR Thinness OR Metabolic Syndrome	Pregnancy OR Infant OR Fetus
Free text search	Congenital heart defect* OR Congenital heart malformation* OR CHD OR Congenital heart disease* OR "Cardiac abnormalities" OR "Cardiac abnormality" OR Cardiac defect* OR Fetal heart OR Fetal cardiac defect* OR Foetal heart OR Foetal cardiac defect*	BMI OR Maternal overweight OR Maternal obesity OR Prepregnancy BMI OR Prepregnancy weight	Offspring* OR Pregnancy

PubMed Search 2019-10-06

		No. of articles
#1	"Heart Defects, Congenital"[Majr]	121,469
#2	(((((Congenital heart defect*[Text Word]) OR Congenital heart malformation*[Text Word]) OR CHD[Text Word]) OR Congenital heart disease*[Text Word]) OR Cardiac abnormalities[Text Word]) OR Cardiac abnormality[Text Word]) OR Cardiac defect*[Text Word]) OR Fetal heart[Text Word]) OR Fetal cardiac defect*[Text Word]) OR Foetal heart[Text Word]) OR Foetal cardiac defect*[Text Word]	105,996
#3	#1 OR #2 ("Heart Defects, Congenital"[Majr]) OR (((((((Congenital heart defect*[Text Word]) OR Congenital heart malformation*[Text Word]) OR CHD[Text Word]) OR Congenital heart disease*[Text Word]) OR Cardiac abnormalities[Text Word]) OR Cardiac abnormality[Text Word]) OR Cardiac defect*[Text Word]) OR Fetal heart[Text Word]) OR Fetal cardiac defect*[Text Word]) OR Foetal heart[Text Word]) OR Foetal cardiac defect*[Text Word]	181,349
#4	((("Body Mass Index"[Majr]) OR "Overweight"[Majr]) OR "Adiposity"[Majr]) OR "Thinness"[Majr]) OR "Metabolic Syndrome"[Majr]	185,465
#5	((Maternal overweight[Text Word]) OR Maternal obesity[Text Word]) OR Prepregnancy BMI[Text Word]) OR Prepregnancy weight[Text Word]	3,677
#6	#4 OR #5 ((((("Body Mass Index"[Majr]) OR "Overweight"[Majr]) OR "Adiposity"[Majr]) OR "Thinness"[Majr]) OR "Metabolic Syndrome"[Majr]) OR (((Maternal overweight[Text Word]) OR Maternal obesity[Text Word]) OR Prepregnancy BMI[Text Word]) OR Prepregnancy weight[Text Word])	187,082
#7	("Pregnancy"[Majr]) OR "Infant"[Majr]) OR "Fetus"[Majr]	273,767
#8	(Offspring*[Text Word]) OR Pregnancy[Text Word]	975,184
#9	#7 OR #8 (((("Pregnancy"[Majr]) OR "Infant"[Majr]) OR "Fetus"[Majr])) OR ((Offspring*[Text Word]) OR Pregnancy[Text Word])	1,053,307
#10	#3 AND #6 AND #9 ((((("Heart Defects, Congenital"[Majr]) OR (((((((Congenital heart defect*[Text Word]) OR Congenital heart malformation*[Text Word]) OR CHD[Text Word]) OR Congenital heart disease*[Text Word]) OR Cardiac abnormalities[Text Word]) OR Cardiac abnormality[Text Word]) OR Cardiac defect*[Text Word]) OR Fetal heart[Text Word]) OR Fetal cardiac defect*[Text Word]) OR Foetal heart[Text Word]) OR Foetal cardiac defect*[Text Word])) AND (((((((("Body Mass Index"[Majr]) OR "Overweight"[Majr]) OR "Adiposity"[Majr]) OR "Thinness"[Majr]) OR "Metabolic Syndrome"[Majr])) OR (((Maternal overweight[Text Word]) OR Maternal obesity[Text Word]) OR Prepregnancy BMI[Text Word]) OR Prepregnancy weight[Text Word])) AND (((("Pregnancy"[Majr]) OR "Infant"[Majr]) OR "Fetus"[Majr])) OR ((Offspring*[Text Word]) OR Pregnancy[Text Word]))	114

Embase Search Strategy

	Aspect 1	Aspect 2	Aspect 3
"MeSH" / Subject Heading (Keyword + Map Term to Subject Heading + Explode + Include All Subheadings)	congenital heart malformation	exp body mass/ or exp obesity/ or exp underweight/ ("Obesity" broader term for "metabolic syndrome X", "maternal obesity", "morbid obesity")	exp high risk pregnancy/ or exp pregnancy/ or infant/ or newborn/ or fetus/
Free text search (Keyword)	Congenital heart defect* OR Congenital heart malformation* OR CHD OR Congenital heart disease* OR Cardiac abnormalities OR Cardiac abnormality OR Cardiac defect* OR Fetal heart OR Fetal cardiac defect* OR Foetal heart OR Foetal cardiac defect*	Maternal overweight OR Maternal obesity OR Prepregnancy BMI OR Prepregnancy weight	Offspring* OR Pregnancy

Embase Search 2019-10-06

		No. of articles
#1	exp congenital heart malformation/	126,712
#2	Congenital heart defect* OR Congenital heart malformation* OR CHD OR Congenital heart disease* OR Cardiac abnormalities OR Cardiac abnormality OR Cardiac defect* OR Fetal heart OR Fetal cardiac defect* OR Foetal heart OR Foetal cardiac defect*	128,917
#3	#1 OR #2	206,398
#4	exp high risk pregnancy/ or exp pregnancy/ or infant/ or newborn/ or fetus/	1,571,089
#5	Offspring* OR Pregnancy	882,813
#6	#4 OR #5	1,768,205
#7	exp body mass/ or exp obesity/ or exp underweight/	761,522
#8	Maternal overweight OR Maternal obesity OR Prepregnancy BMI OR Prepregnancy weight	7,737
#9	#7 OR #8	762,132
#10	#3 AND #6 AND #9	1,046
LIMITS	English Language + Exclude MEDLINE journals	91

Maternal diabetes and CHDs in offspring*PubMed Search Strategy*

	Aspect 1	Aspect 2	Aspect 3
MeSH	Heart defects, congenital	Diabetes Mellitus OR Pregnancy in diabetics OR Hyperglycemia OR Insulin Resistance	Pregnancy OR Infant OR Fetus
Free text search	(as above)	Pregestational diabetes OR PGDM OR Maternal diabetes OR Gestational diabetes OR GDM OR Diabetic women OR Diabetic pregnancies	(as above)

PubMed Search 2019-10-06

		No. of articles
#3	#1 OR #2 (as above)	181,349
#4	((("Diabetes Mellitus"[Majr]) OR "Pregnancy in Diabetics"[Mesh]) OR "Hyperglycemia"[Majr]) OR "Insulin Resistance"[Majr]	386,821
#5	20,405	

#6	#4 OR #5 ((((("Diabetes Mellitus"[Majr]) OR "Pregnancy in Diabetics"[Mesh]) OR "Hyperglycemia"[Majr]) OR "Insulin Resistance"[Majr])) OR ((((((Pregestational diabetes[Text Word]) OR PGDM[Text Word]) OR Maternal diabetes[Text Word]) OR Gestational diabetes[Text Word]) OR GDM[Text Word]) OR Diabetic women[Text Word]) OR Diabetic pregnancies[Text Word])	393,455
#9	#7 OR #8 (as above)	1,053,307
#10	#3 AND #6 AND #9 (((((((("Diabetes Mellitus"[Majr]) OR "Pregnancy in Diabetics"[Mesh]) OR "Hyperglycemia"[Majr]) OR "Insulin Resistance"[Majr])) OR ((((((Pregestational diabetes[Text Word]) OR PGDM[Text Word]) OR Maternal diabetes[Text Word]) OR Gestational diabetes[Text Word]) OR GDM[Text Word]) OR Diabetic women[Text Word]) OR Diabetic pregnancies[Text Word]))) AND (((("Pregnancy"[Majr]) OR "Infant"[Majr]) OR "Fetus"[Majr]) OR ((Offspring*[Text Word]) OR Pregnancy[Text Word])) AND (("Heart Defects, Congenital"[Majr]) OR (((((((Congenital heart defect*[Text Word]) OR Congenital heart malformation*[Text Word]) OR CHD[Text Word]) OR Congenital heart disease*[Text Word]) OR Cardiac abnormalities[Text Word]) OR Cardiac abnormality[Text Word]) OR Cardiac defect*[Text Word]) OR Fetal heart[Text Word]) OR Fetal cardiac defect*[Text Word]) OR Foetal heart[Text Word]) OR Foetal cardiac defect*[Text Word]))	632

Embase Search Strategy

	Aspect 1	Aspect 2	Aspect 3
"MeSH" / Subject Heading	congenital heart malformation	exp diabetes mellitus/ or exp hyperglycemia/ or exp insulin resistance/	exp high risk pregnancy/ or exp pregnancy/ or infant/ or newborn/ or fetus/
Free text search	(as above)	Pregestational diabetes OR PGDM OR Maternal diabetes OR Gestational diabetes OR GDM OR Diabetic women OR Diabetic pregnancies	(as above)

Embase Search 2019-10-06

		No. of articles
#3	#1 OR #2 (as above)	206,398
#6	#4 OR #5 (as above)	1,768,205
#7	exp diabetes mellitus/ or exp hyperglycemia/ or exp insulin resistance/	1,005,513
#8	Pregestational diabetes OR PGDM OR Maternal diabetes OR Gestational diabetes OR GDM OR Diabetic women OR Diabetic pregnancies	32,162
#9	#7 OR #8	1,008,162
#10	#3 AND #6 AND #9	2,001
LIMITS	English Language + Exclude MEDLINE journals	182

Maternal hypertension or preeclampsia and CHDs in offspring

PubMed Search Strategy

	Aspect 1	Aspect 2	Aspect 3
MeSH	Heart defects, congenital	Hypertension OR Hypertension, pregnancy-induced	Pregnancy OR Infant OR Fetus
Free text search	(as above)	Maternal hypertension OR Maternal hypertensive disorder* OR Gestational hypertension	(as above)

PubMed Search 2019-10-06

		No. of articles
#3	#1 OR #2 (as above)	181,349
#4	("Hypertension"[Majr]) OR "Hypertension, Pregnancy-Induced"[Mesh]	211,800
#5	((Maternal hypertension[Text Word]) OR Maternal hypertensive disorder*[Text Word]) OR Gestational hypertension[Text Word]	3,466
#6	#4 OR #5	213,166

	((("Hypertension"[Majr] OR "Hypertension, Pregnancy-Induced"[Mesh])) OR (((Maternal hypertension[Text Word] OR Maternal hypertensive disorder*[Text Word] OR Gestational hypertension[Text Word]))	
#9	#7 OR #8 (as above)	1,053,307
#10	#3 AND #6 AND #9 ((((("Hypertension"[Majr] OR "Hypertension, Pregnancy-Induced"[Mesh])) OR (((Maternal hypertension[Text Word] OR Maternal hypertensive disorder*[Text Word] OR Gestational hypertension[Text Word])))) AND (((("Pregnancy"[Majr] OR "Infant"[Majr] OR "Fetus"[Majr])) OR ((Offspring*[Text Word] OR Pregnancy[Text Word])))) AND (("Heart Defects, Congenital"[Majr] OR (((((((Congenital heart defect*[Text Word] OR Congenital heart malformation*[Text Word] OR CHD[Text Word] OR Congenital heart disease*[Text Word] OR Cardiac abnormalities[Text Word] OR Cardiac abnormality[Text Word] OR Cardiac defect*[Text Word] OR Fetal heart[Text Word] OR Fetal cardiac defect*[Text Word] OR Foetal heart[Text Word] OR Foetal cardiac defect*[Text Word]))	661

Embase Search Strategy

	Aspect 1	Aspect 2	Aspect 3
"MeSH" / Subject Heading	congenital heart malformation	exp hypertension/ or exp "eclampsia and preeclampsia"/	exp high risk pregnancy/ or exp pregnancy/ or infant/ or newborn/ or fetus/
Free text search	(as above)	Maternal hypertension OR Maternal hypertensive disorder* OR Gestational hypertension	(as above)

Embase Search 2019-10-06

		No. of articles
#3	#1 OR #2 (as above)	206,398
#6	#4 OR #5 (as above)	1,768,205
#7	exp hypertension/ or exp "eclampsia and preeclampsia"/	735,885
#8	Maternal hypertension OR Maternal hypertensive disorder* OR Gestational hypertension	18,442
#9	#7 OR #8	736,285
#10	#3 AND #6 AND #9	2,637
LIMITS	English Language + Exclude MEDLINE journals	270

Maternal dyslipidemia and CHDs in offspring*PubMed Search Strategy*

	Aspect 1	Aspect 2	Aspect 3
MeSH	Heart defects, congenital	Dyslipidemias OR Lipoproteins, HDL	Pregnancy OR Infant OR Fetus
Free text search	(as above)	HDL OR Dyslipidemia*	(as above)

PubMed Search 2019-10-06

		No. of articles
#3	#1 OR #2 (as above)	181,349
#4	("Dyslipidemias"[Majr] OR "Lipoproteins, HDL"[Majr]	66,228
#5	(Dyslipidemia*[Text Word] OR HDL[Text Word]	103,854
#6	#4 OR #5 ((((("Dyslipidemias"[Majr] OR "Lipoproteins, HDL"[Majr])) OR ((Dyslipidemia*[Text Word] OR HDL[Text Word]))	138,647
#9	#7 OR #8 (as above)	1,053,307
#10	#3 AND #6 AND #9 (#52 AND #96 AND #62) ((((("Dyslipidemias"[Majr] OR "Lipoproteins, HDL"[Majr])) OR ((Dyslipidemia*[Text Word] OR HDL[Text Word])))) AND (((("Pregnancy"[Majr] OR "Infant"[Majr] OR "Fetus"[Majr])) OR ((Offspring*[Text Word] OR Pregnancy[Text Word])))) AND (("Heart Defects, Congenital"[Majr] OR (((((((Congenital heart defect*[Text Word] OR Congenital heart malformation*[Text Word] OR CHD[Text Word] OR Congenital heart disease*[Text Word] OR Cardiac abnormalities[Text Word] OR Cardiac abnormality[Text Word] OR Cardiac defect*[Text Word] OR Fetal heart[Text Word] OR Fetal cardiac defect*[Text Word] OR Foetal heart[Text Word] OR Foetal cardiac defect*[Text Word]))	87

Embase Search Strategy

	Aspect 1	Aspect 2	Aspect 3
"MeSH" / Subject Heading	congenital heart malformation	exp dyslipidemia/ or exp hypertriglyceridemia/ or exp high density lipoprotein/	exp high risk pregnancy/ or exp pregnancy/ or infant/ or newborn/ or fetus/
Free text search	(as above)	HDL OR Dyslipidemia*	(as above)

Embase Search 2019-10-06

		No. of articles
#3	#1 OR #2 (as above)	206,398
#6	#4 OR #5 (as above)	1,768,205
#7	exp dyslipidemia/ or exp hypertriglyceridemia/ or exp high density lipoprotein/	145,111
#8	HDL OR Dyslipidemia*	166,506
#9	#7 OR #8	202,390
#10	#3 AND #6 AND #9	187
LIMITS	English Language + Exclude MEDLINE journals	17

Table S2: Newcastle-Ottawa Quality Assessment Scale – Case-control studies

Selection		
1. Is the case definition adequate?	A. yes, with independent validation	☆
	B. yes, eg record linkage or based on self-reports	
	C. no description	
2. Representativeness of the cases	A. consecutive or obviously representative series of cases	☆
	B. potential for selection biases or not stated	
3. Selection of Controls	A. community controls	☆
	B. hospital controls	
	C. no description	
4. Definition of Controls	A. no history of disease (endpoint)	☆
	B. no description of source	
Comparability		
1. Comparability of cases and controls on the basis of the design or analysis	A. study controls for _____ (Select the most important factor.)	☆
	B. study controls for any additional factor (This criteria could be modified to indicate specific control for a second important factor.)	☆
Exposure		
1. Ascertainment of exposure	A. secure record (eg surgical records)	☆
	B. structured interview where blind to case/control status	☆
	C. interview not blinded to case/control status	
	D. written self-report or medical record only	
	E. no description	
2. Same method of ascertainment for cases and controls	A. yes	☆
	B. no	
3. Non-Response rate	A. same rate for both groups	☆
	B. non respondents described	
	C. rate different and no designation	

Note: A study can be awarded a maximum of one star for each numbered item within the Selection and Exposure categories. A maximum of two stars can be given for Comparability.

Further explanations and manuals for the scale can be found at:
http://www.ohri.ca/programs/clinical_epidemiology/oxford.asp

Table S2 (continued): Newcastle-Ottawa Quality Assessment Scale – Cohort studies

Selection		
1. Representativeness of the exposed cohort	A. truly representative of the average _____ (describe) in the community	☆
	B. somewhat representative of the average _____ in the community	☆
	C. selected group of users eg nurses, volunteers	
	D. no description of the derivation of the cohort	
2. Selection of the non-exposed cohort	A. drawn from the same community as the exposed cohort	☆
	B. drawn from a different source	
	C. no description of the derivation of the non-exposed cohort	
3. Ascertainment of exposure	A. secure record (eg surgical records)	☆
	B. structured interview	☆
	C. written self-report	
	D. no description	
4. Demonstration that outcome of interest was not present at start of study	A. yes	☆
	B. no	
Comparability		
1. Comparability of cohorts on the basis of the design or analysis	A. study controls for _____ (Select the most important factor.)	☆
	B. study controls for any additional factor (This criteria could be modified to indicate specific control for a second important factor.)	☆
Outcome		
1. Assessment of outcome	A. independent blind assessment	☆
	B. record linkage	☆
	C. self-report	
	D. no description	
2. Was follow-up long enough for outcomes to occur	A. yes (select an adequate follow up period for outcome of interest)	☆
	B. no	
3. Adequacy of follow up of cohorts	A. complete follow up - all subjects accounted for	☆
	B. subjects lost to follow up unlikely to introduce bias - small number lost - > ____ % (select an adequate %) follow up, or description provided of those lost)	☆
	C. follow up rate < ____% (select an adequate %) and no description of those lost	
	D. no statement	

Note: A study can be awarded a maximum of one star for each numbered item within the Selection and Outcome categories. A maximum of two stars can be given for Comparability.

Further explanations and manuals for the scale can be found at:

http://www.ohri.ca/programs/clinical_epidemiology/oxford.asp

Table S3: Characteristics of included studies

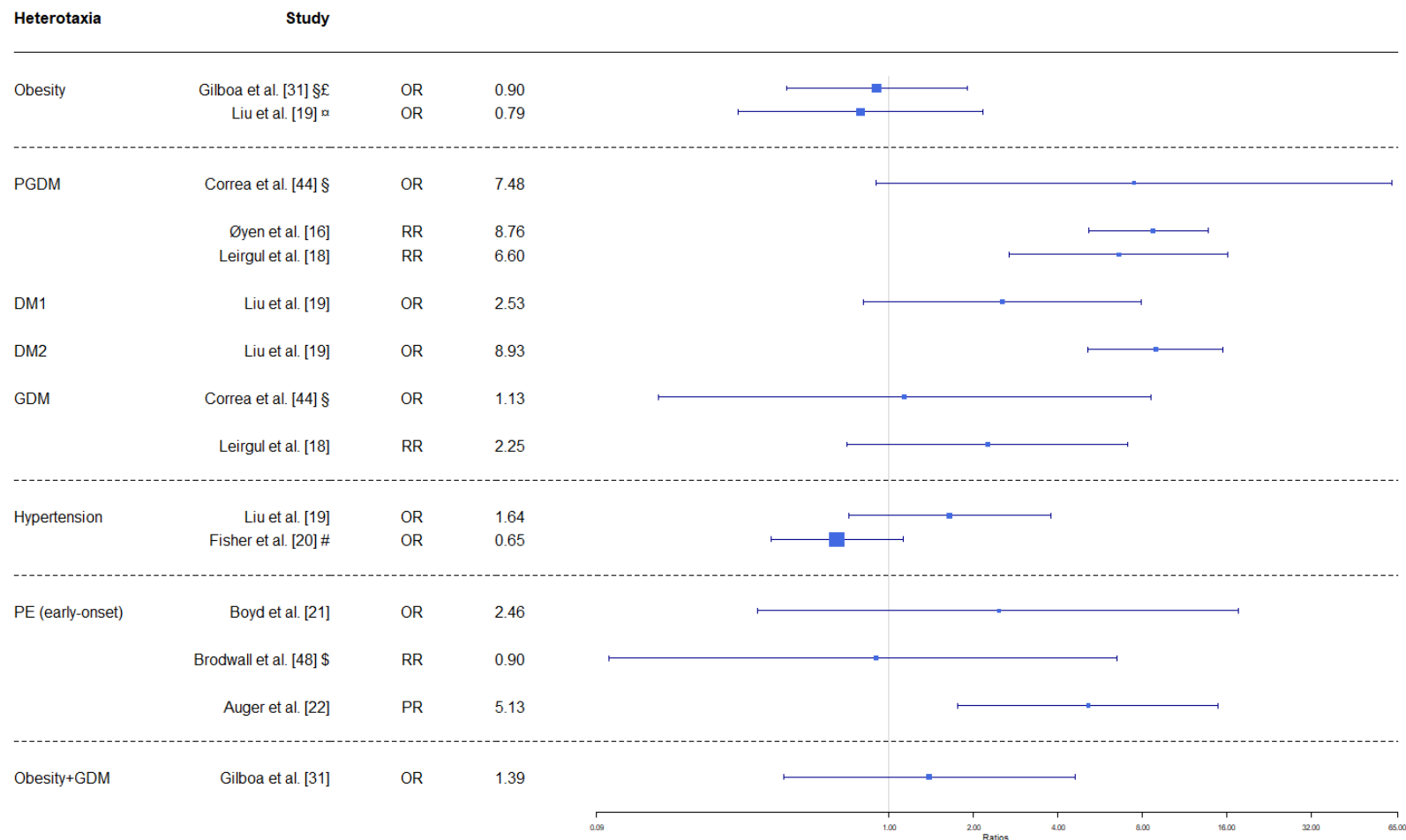
Author/publication year	Country of study population	Study design	Population size	Cases with CHDs	Included study population	Plurality	Maternal exposure	Sources of maternal exposure	NOS score
Hoang 2016 [17]	USA (Texas)	Cohort	4 207 898	48 249	Live births	All	PGDM (not specified), GDM	Registers	8
Persson 2019 [14]	Sweden	Cohort	2 050 491	28 628	Live births	Singletons	Obesity	Registers	8
Liu 2013 [19]	Canada (excl. Quebec)	Cohort	2 278 838	26 488	Live births	All	Obesity, DM1, DM2, hypertension	Registers	8
Chou 2016 [46]	Taiwan	Cohort	1 387 650	23 483	Live births	All	DM1, DM2, hypertension	Registers	8
Boyd 2017 [21]	Denmark	Cohort	1 972 857	18 038	Live births	Singletons	PE	Registers	8
Auger 2015 [22]	Canada (Quebec)	Cohort	1 942 072	17 296	Live births	All	PE	Registers	8
Ludvigsson 2018 [13]	Sweden	Cohort	1 162 323	17 242	Live births	Singletons	DM1	Registers	8
Øyen 2016 [16]	Denmark	Cohort	2 025 727	16 325	Live births	Singletons	PGDM (DM1 or DM2), GDM	Registers	8
Blomberg 2010 [30]	Sweden	Cohort	1 049 582	11 163	Live births, stillbirths	Not stated	Obesity	Registers	8
Fisher 2017 [20]	USA	Case-control (NBDPS)	21 762	10 625	Live births, stillbirths, terminated	Singletons	Untreated hypertension	Interviews	8
Leirgul 2016 [18]	Norway	Cohort	914 427	10 575	Live births, stillbirths, terminated	Singletons	PGDM (DM1, DM2 or unspecified DM), GDM	Registers	8
Block 2013 [29]	USA (Florida)	Case-control	1 124 370	9 314	Live births	Singletons	Obesity	Registers	7
Mills 2010 [32]	USA (New York State)	Case-control (nested)	63 696	7 392	Live births	Singletons	Obesity	Medical records	7
Cedergren 2003 [35]	Sweden	Case-control	812 457	6 801	Live births, stillbirths	Not stated	Obesity	Registers	7
Gilboa 2010 [31]	USA	Case-control (NBDPS)	12 113	6 440	Live births, stillbirths	Not stated	Obesity, obesity+GDM	Interviews	8
Correa 2008 [44]	USA	Case-control (NBDPS)	17 925	4 621	Live births	Not stated	PGDM (DM1 or DM2), GDM	Interviews	8
Vereczkey 2014 [41]	Hungary	Case-control	41 713	3 562	Live births	All	PGDM (DM1 or DM2), hypertension	Registers	8

Brodwall 2016 [48]	Norway	Cohort	914 703	2 473	Live births, stillbirths, terminated	Singletons	PE	Registers	8
Sharpe 2005 [47]	Australia (South Australia)	Cohort	282 260	2 418	Live births, stillbirths	Singletons	DM1, GDM (GDM or impaired glucose tolerance)	Interviews	8
Liu 2015 [39]	China (Tianjin)	Cohort	90 796	1 817	Live births	All	Obesity, GDM	Questionnaire / medical records	8
Brite 2014 [15]	USA	Cohort (CSL)	121 815	1 388	Live births	Singletons	Obesity	Medical records	8
Watkins 2001 [37]	USA	Case-control (ABDCCS)	4 078	1 049	Live births, stillbirths	Not stated	Obesity	Interviews	7
Agopian 2012 [40]	USA (Texas)	Cohort	3 806 299	563	Live births, stillbirths, terminated	All	Obesity, PGDM (not specified), GDM	Registers	8
Rankin 2010 [33]	England	Cohort	41 013	341	Live births, stillbirths, terminated	Singletons	Obesity	Registers	8
Shaw 2008 [34]	USA (California)	Case-control	1 359	323	Live births, stillbirths, terminated	Not stated	Obesity	Interviews	8
Kovalenko 2018 [42]	Russia (Murmansk)	Cohort	52 253	233	Live births	Singletons	PGDM (DM1 or DM2)	Registers	8
Shaw 2000 [38]	USA (California)	Case-control	2 033	202	Live births, stillbirths	Not stated	Obesity	Interviews	7
Watkins 2003 [36]	USA	Case-control (Atlanta BDRFSS)	525	195	Live births, stillbirths, terminated	Not stated	Obesity	Interviews	7
Vinceti 2014 [43]	Italy	Case-control (nested)	479 720	68	Live births, stillbirths	All	PGDM (DM1 or DM2)	Registers	8
Erickson 1991 [45]	USA	Case-control (ABDCCS)	7 900	35	Live births, stillbirths	Not stated	PGDM (not specified)	Interviews	7

Note: Studies listed after number of CHD cases: studies with most cases first etc.

Abbreviations: ABDCCS, Atlanta Birth Defect Case-Control Study; BDRFSS, Birth Defects Risk Factor Surveillance Study; CHDs, congenital heart defects; CM, congenital malformations; CSL, The Consortium of Safe Labor; DM1, diabetes mellitus type 1; DM2, diabetes mellitus type 2; GDM, gestational diabetes mellitus; NBDPS, National Birth Defects Prevention Study; NOS, Newcastle Ottawa Scale; PE, preeclampsia; PGDM, pregestational diabetes.

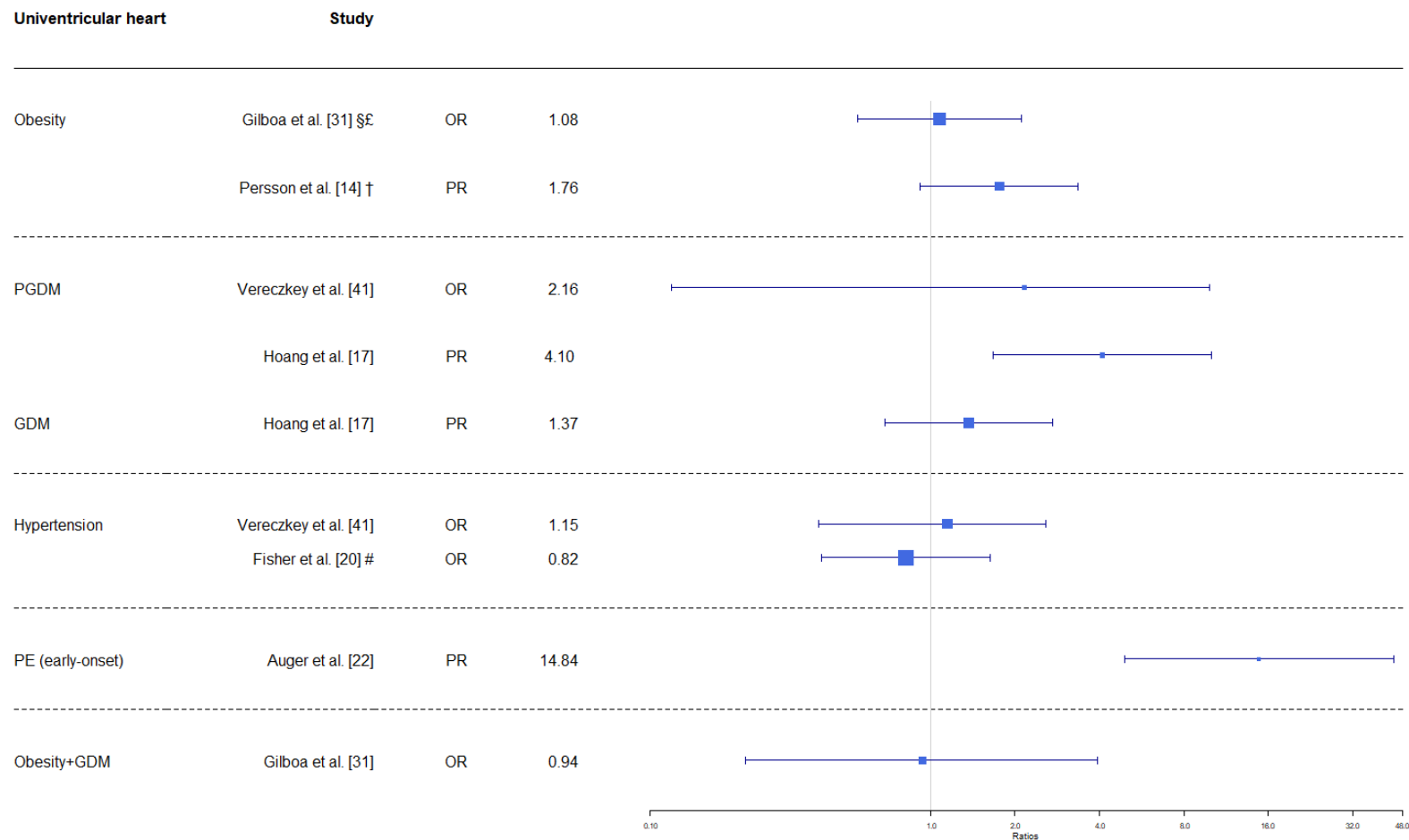
Figure S1. Maternal metabolic disorders and risk of heterotaxia in the offspring



Note: obesity is defined as BMI ≥ 30 kg/m² unless other is stated; early-onset PE defined as debut before gestational week 34; PGDM are defined as DM1 or DM2; all risk estimates are adjusted unless other is stated; *, not adjusted; §, isolated defects; ⌘, obesity defined from ICD-10 codes; £, BMI ≥ 35 kg/m²; €, BMI > 29 kg/m²; †, BMI 35- <40 kg/m²; #, untreated hypertension; §, Brodwall et al. pooled early-onset PE and severe PE.

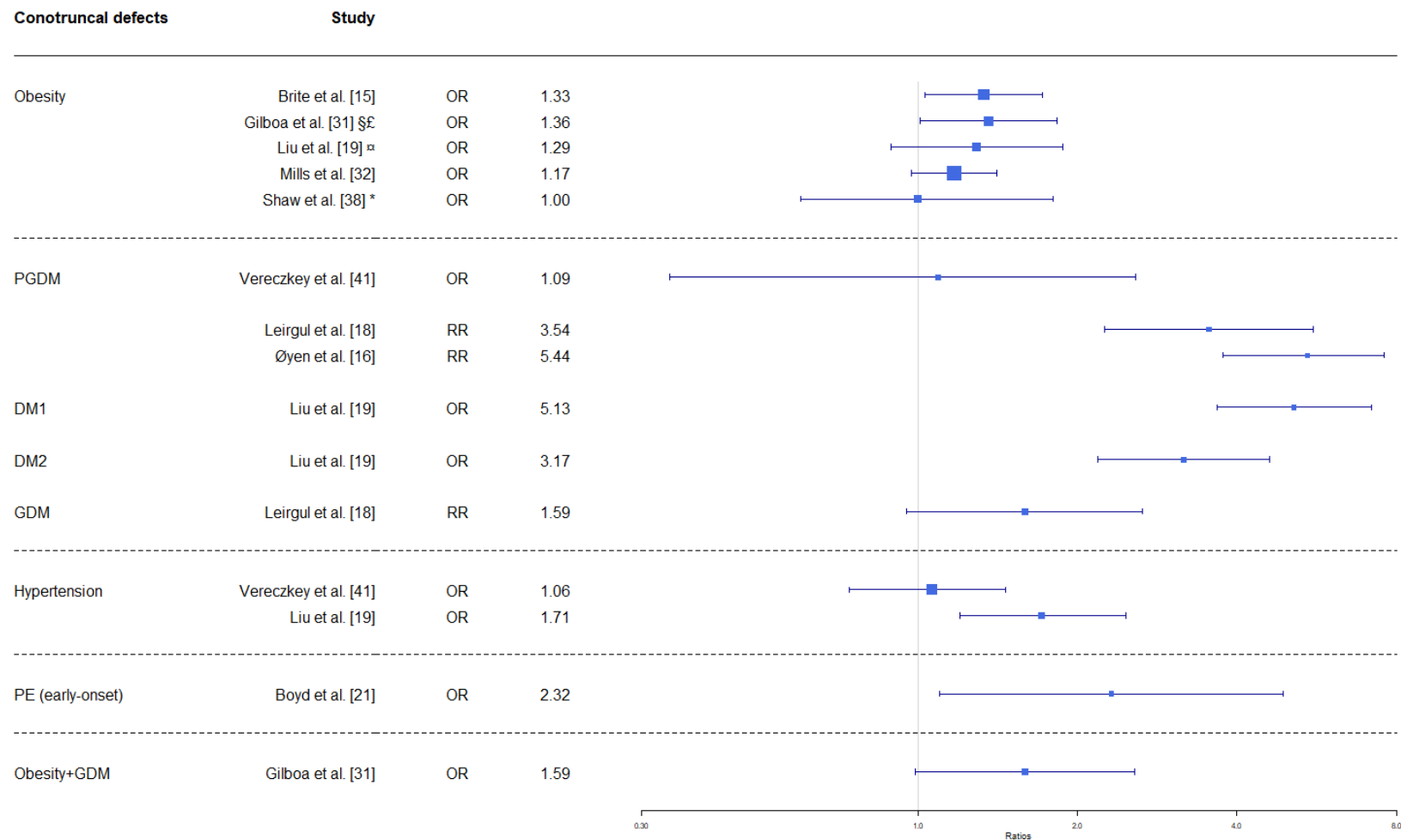
Abbreviations: BMI, body mass index; DM1, diabetes type 1; DM2, diabetes type 2; GDM, gestational diabetes; OR, odds ratio; PE, preeclampsia; PGDM, pregestational diabetes; PR, prevalence ratio; RR, risk ratio.

Figure S2. Maternal metabolic disorders and risk of univentricular heart in the offspring



Note: obesity is defined as BMI ≥ 30 kg/m² unless other is stated; early-onset PE defined as debut before gestational week 34; PGDM are defined as DM1 or DM2; all risk estimates are adjusted unless other is stated; *, not adjusted; §, BMI ≥ 35 kg/m²; †, BMI 35-<40 kg/m²; #, untreated hypertension. Abbreviations: BMI, body mass index; DM1, diabetes type 1; DM2, diabetes type 2; GDM, gestational diabetes; OR, odds ratio; PE, preeclampsia; PGDM, pregestational diabetes; PR, prevalence ratio; RR, risk ratio.

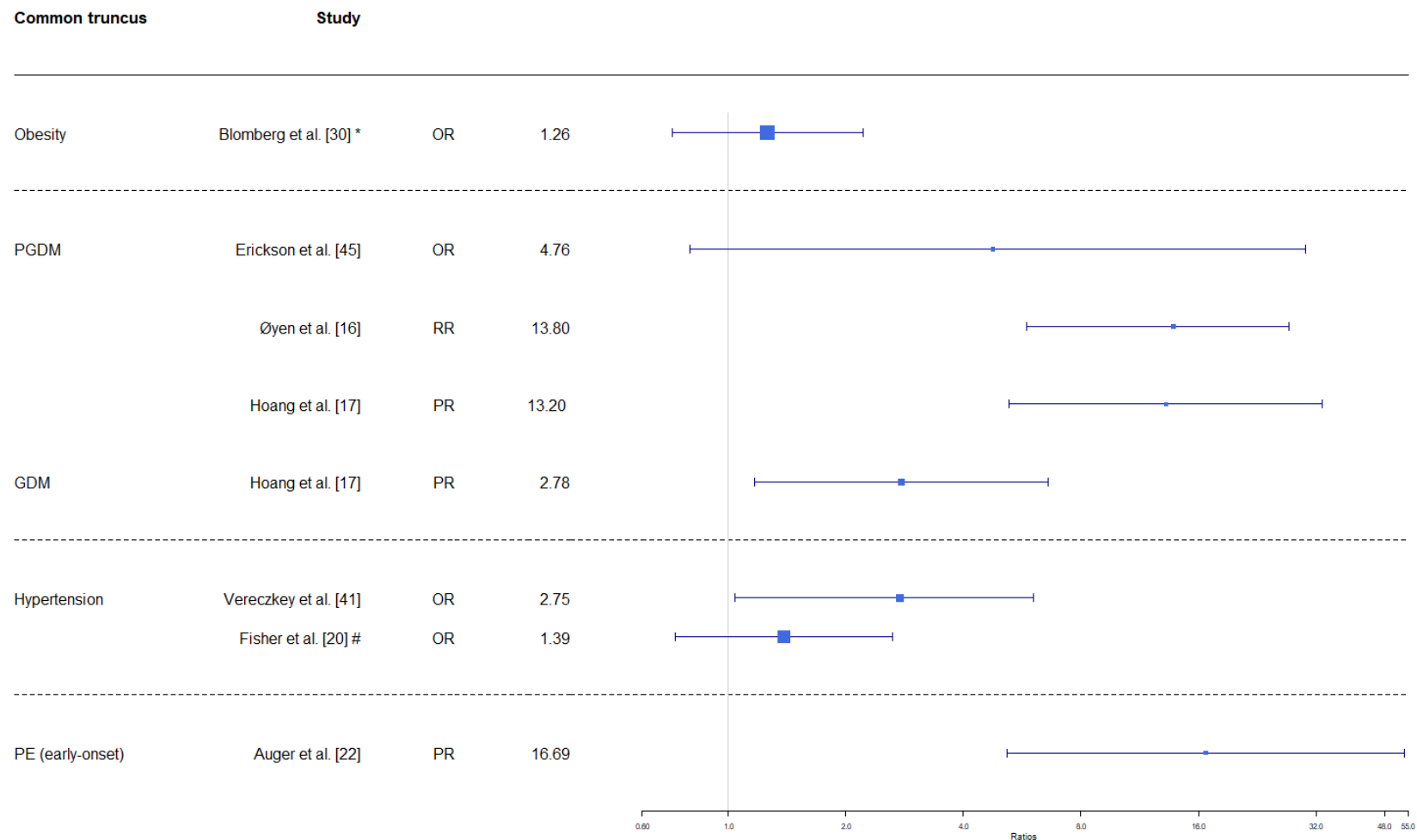
Figure S3. Maternal metabolic disorders and risk of conotruncal defects in the offspring



Note: obesity is defined as BMI ≥ 30 kg/m² unless other is stated; early-onset PE defined as debut before gestational week 34; PGDM are defined as DM1 or DM2; all risk estimates are adjusted unless other is stated; *, not adjusted; §, isolated defects; ♂, obesity defined from ICD-10 codes; £, BMI ≥ 35 kg/m².

Abbreviations: BMI, body mass index; DM1, diabetes type 1; DM2, diabetes type 2; GDM, gestational diabetes; OR, odds ratio; PE, preeclampsia; PGDM, pregestational diabetes; PR, prevalence ratio; RR, risk ratio.

Figure S4. Maternal metabolic disorders and risk of common truncus in the offspring

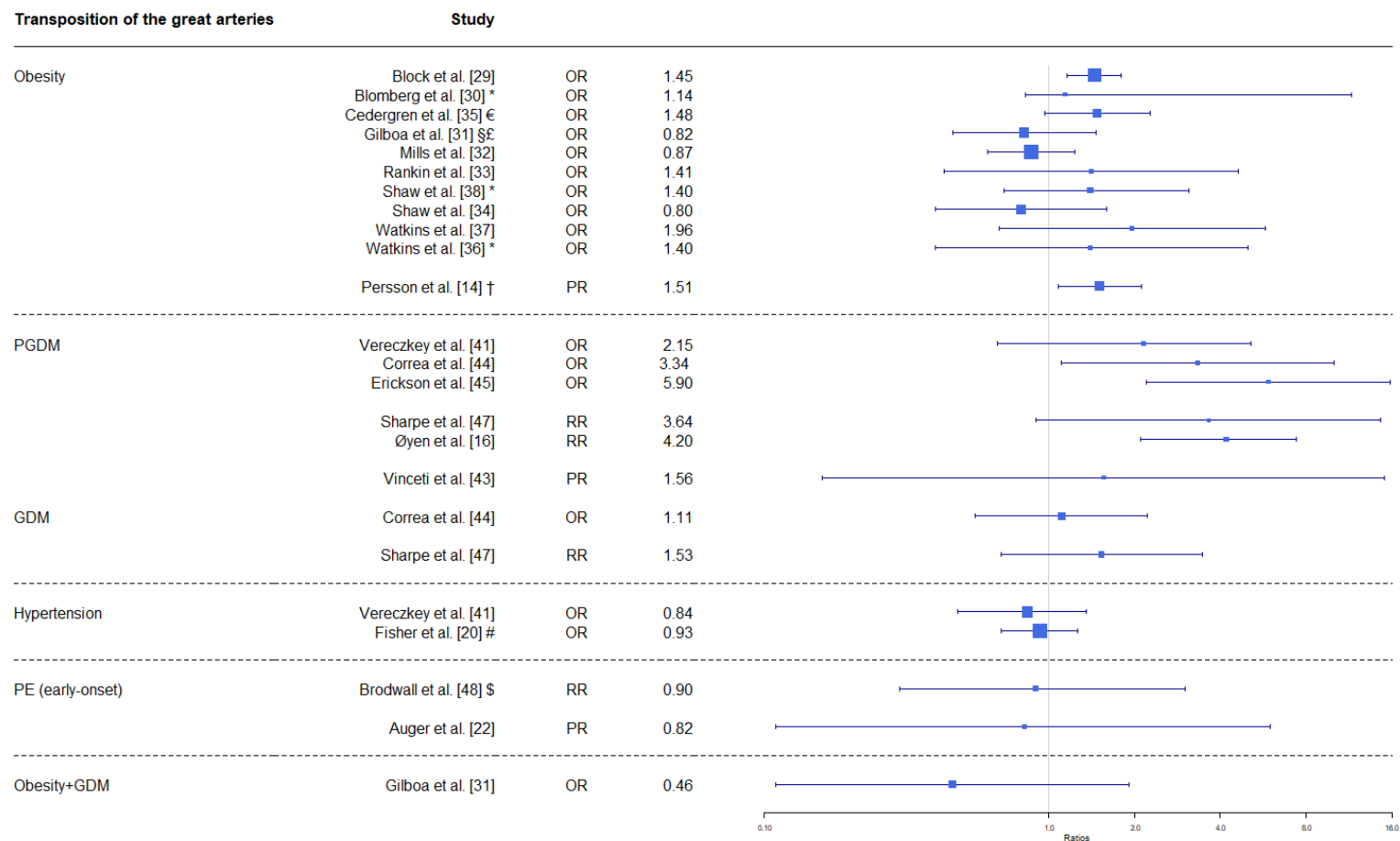


Note: obesity is defined as BMI ≥ 30 kg/m² unless other is stated; early-onset PE defined as debut before gestational week 34; PGDM are defined as DM1 or DM2; all risk estimates are adjusted unless other is stated; *, not adjusted; #, untreated hypertension.

Abbreviations: BMI, body mass index; DM1, diabetes type 1; DM2, diabetes type 2; GDM, gestational diabetes; OR, odds ratio; PE, preeclampsia; PGDM, pregestational diabetes; PR, prevalence ratio; RR, risk ratio.

Supporting information

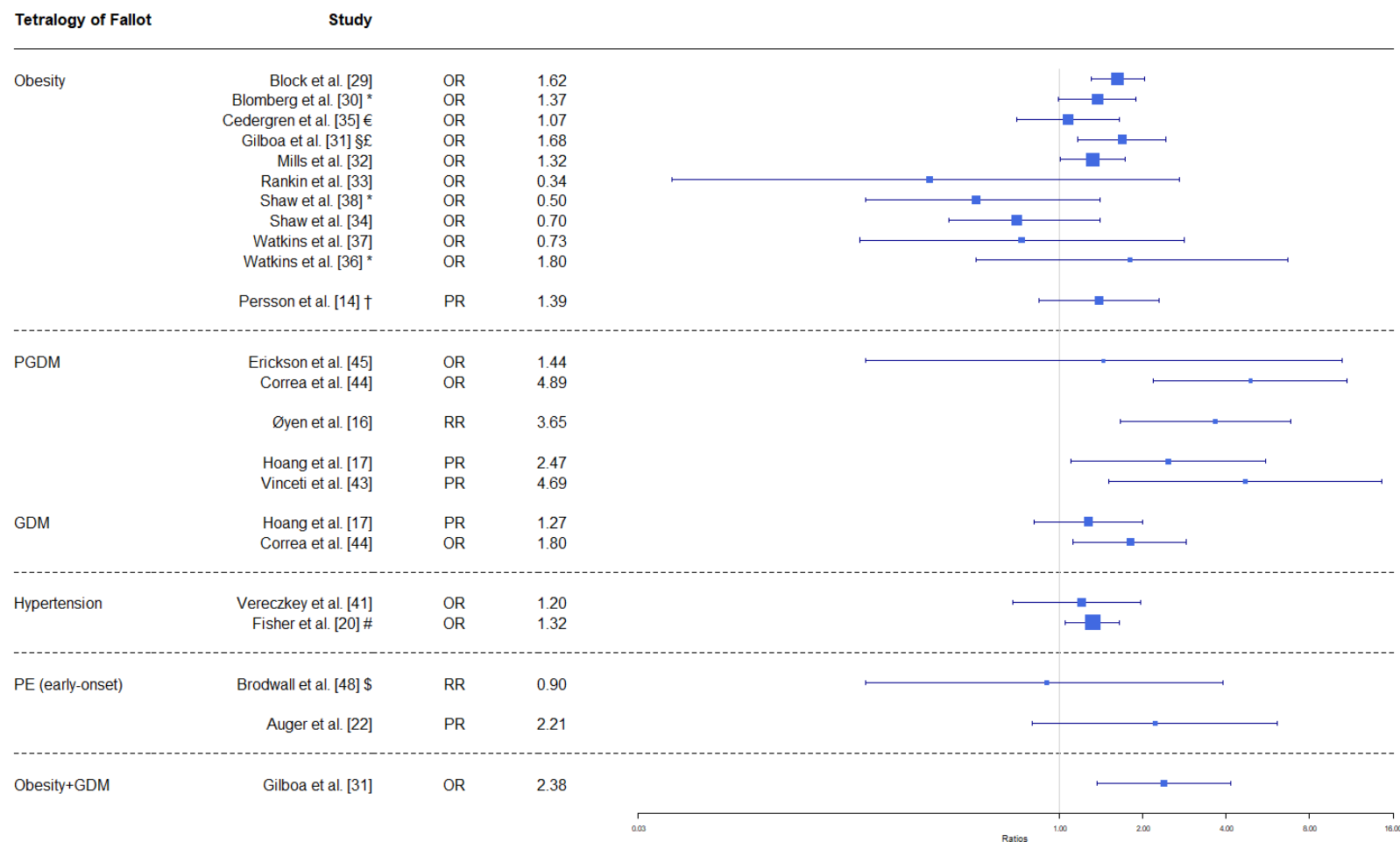
Figure S5. Maternal metabolic disorders and risk of transposition of the great arteries in the offspring



Note: obesity is defined as BMI ≥ 30 kg/m² unless other is stated; early-onset PE defined as debut before gestational week 34; PGDM are defined as DM1 or DM2; all risk estimates are adjusted unless other is stated; *, not adjusted; \$, isolated defects; £, BMI ≥ 35 kg/m²; €, BMI > 29 kg/m²; †, BMI 35-<40 kg/m²; #, untreated hypertension; \$, Brodwall et al. pooled early-onset PE and severe PE.

Abbreviations: BMI, body mass index; DM1, diabetes type 1; DM2, diabetes type 2; GDM, gestational diabetes; OR, odds ratio; PE, preeclampsia; PGDM, pregestational diabetes; PR, prevalence ratio; RR, risk ratio.

Figure S6. Maternal metabolic disorders and risk of Tetralogy of Fallot in the offspring

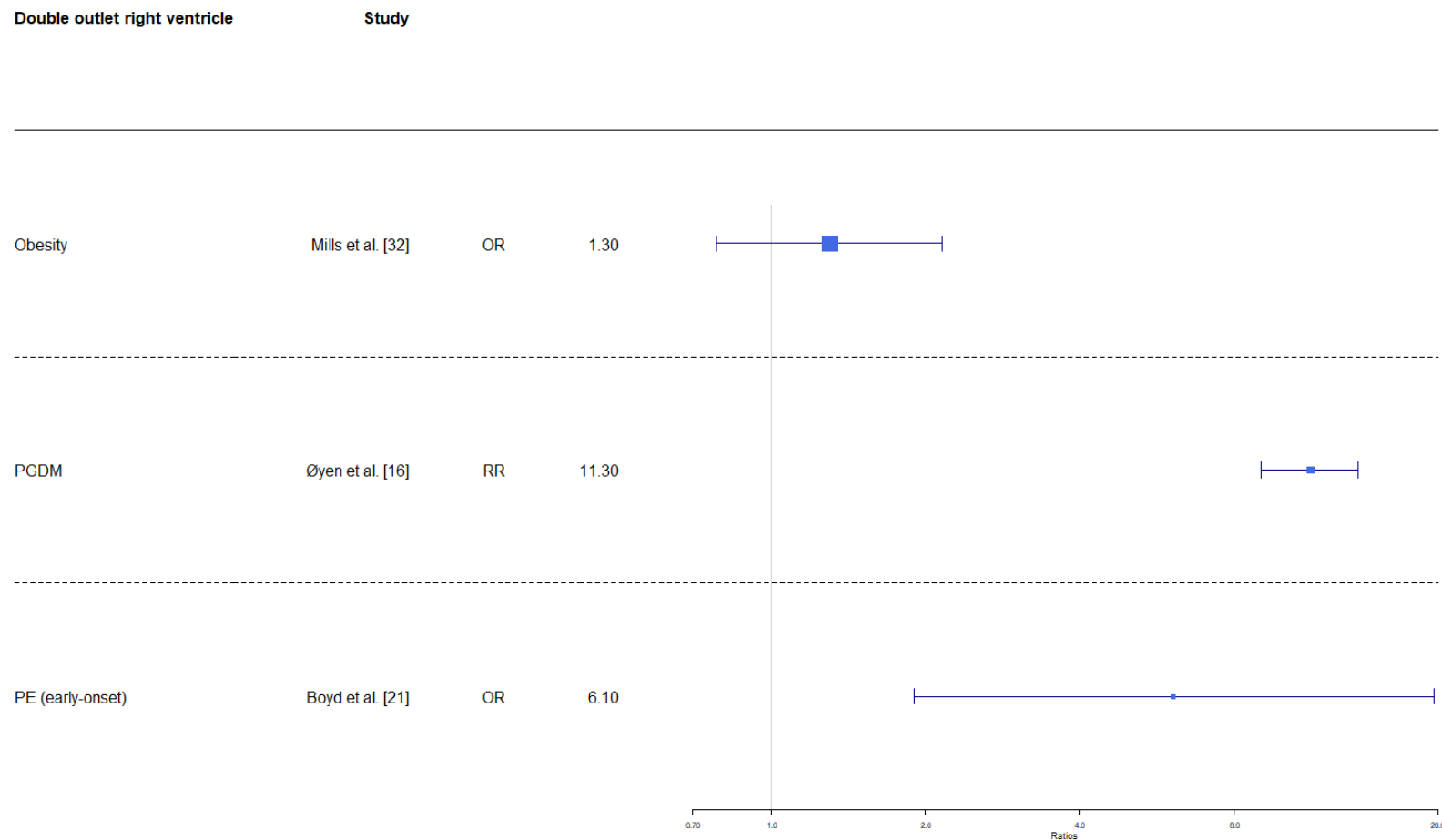


Note: obesity is defined as BMI ≥ 30 kg/m² unless other is stated; early-onset PE defined as debut before gestational week 34; PGDM are defined as DM1 or DM2; all risk estimates are adjusted unless other is stated; *, not adjusted; \$, isolated defects; £, BMI ≥ 35 kg/m²; €, BMI > 29 kg/m²; †, BMI 35-<40 kg/m²; #, untreated hypertension; \$, Brodwall et al. pooled early-onset PE and severe PE.

Abbreviations: BMI, body mass index; DM1, diabetes type 1; DM2, diabetes type 2; GDM, gestational diabetes; OR, odds ratio; PE, preeclampsia; PGDM, pregestational diabetes; PR, prevalence ratio; RR, risk ratio.

Supporting information

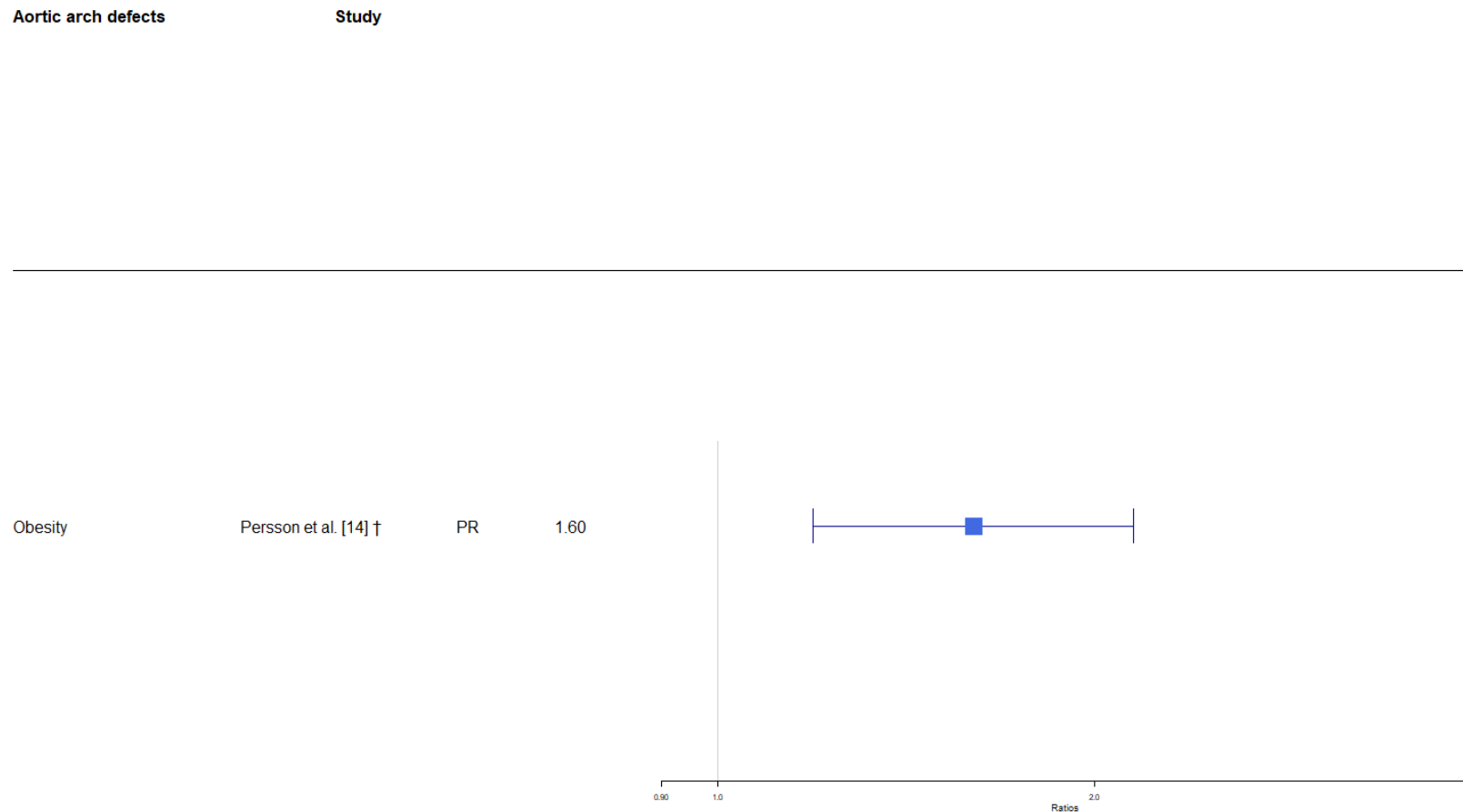
Figure S7. Maternal metabolic disorders and risk of double outlet right ventricle in the offspring



Note: obesity is defined as BMI ≥ 30 kg/m² unless other is stated; early-onset PE defined as debut before gestational week 34; PGDM are defined as DM1 or DM2; all risk estimates are adjusted unless other is stated; *, not adjusted.

Abbreviations: BMI, body mass index; DM1, diabetes type 1; DM2, diabetes type 2; GDM, gestational diabetes; OR, odds ratio; PE, preeclampsia; PGDM, pregestational diabetes; PR, prevalence ratio; RR, risk ratio.

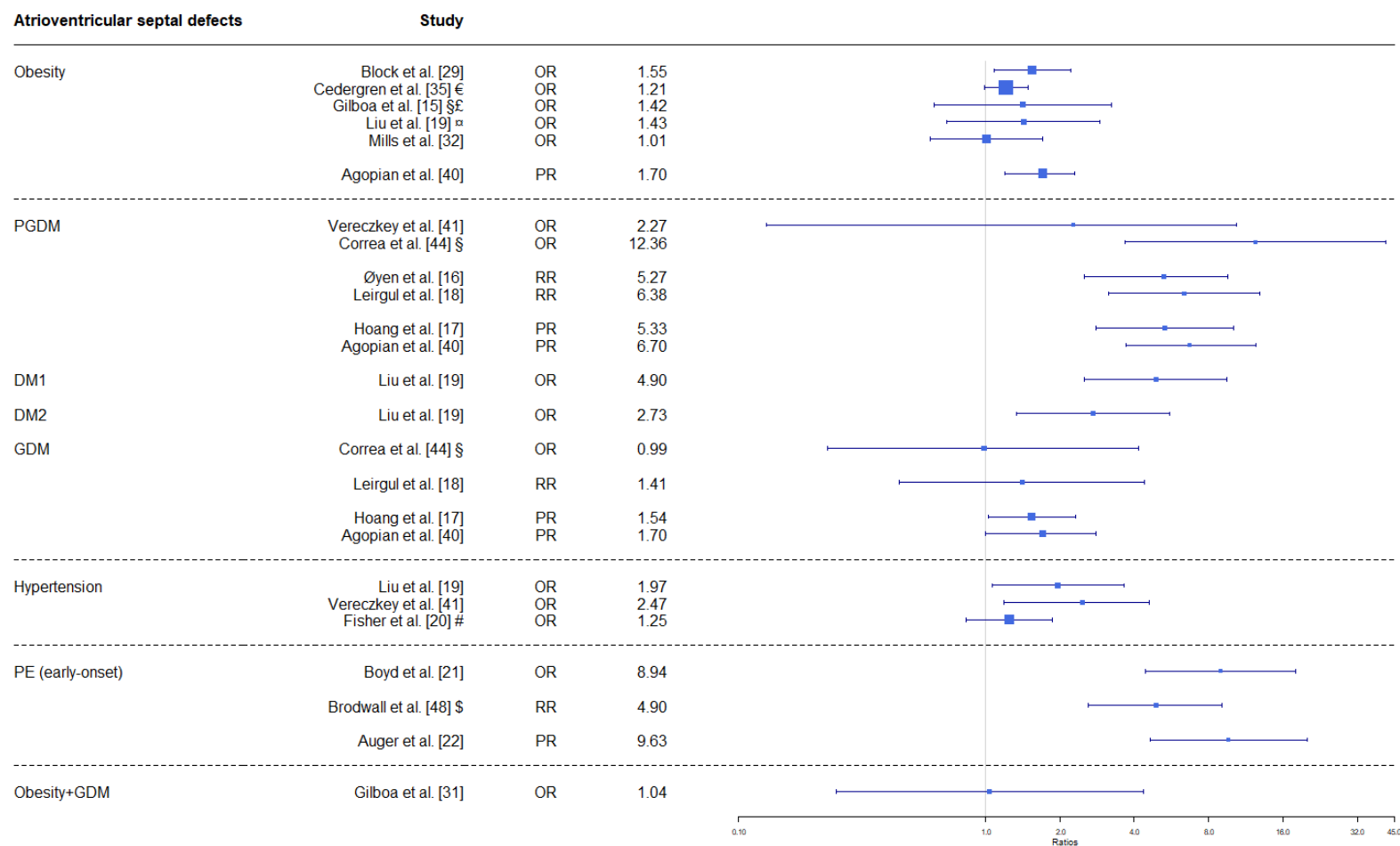
Figure S8. Maternal metabolic disorders and risk of aortic arch defects in the offspring



Note: obesity is defined as BMI ≥ 30 kg/m² unless other is stated; early-onset PE defined as debut before gestational week 34; PGDM are defined as DM1 or DM2; all risk estimates are adjusted unless other is stated; *, not adjusted; †, BMI 35-<40 kg/m².

Abbreviations: BMI, body mass index; DM1, diabetes type 1; DM2, diabetes type 2; GDM, gestational diabetes; OR, odds ratio; PE, preeclampsia; PGDM, pregestational diabetes; PR, prevalence ratio; RR, risk ratio.

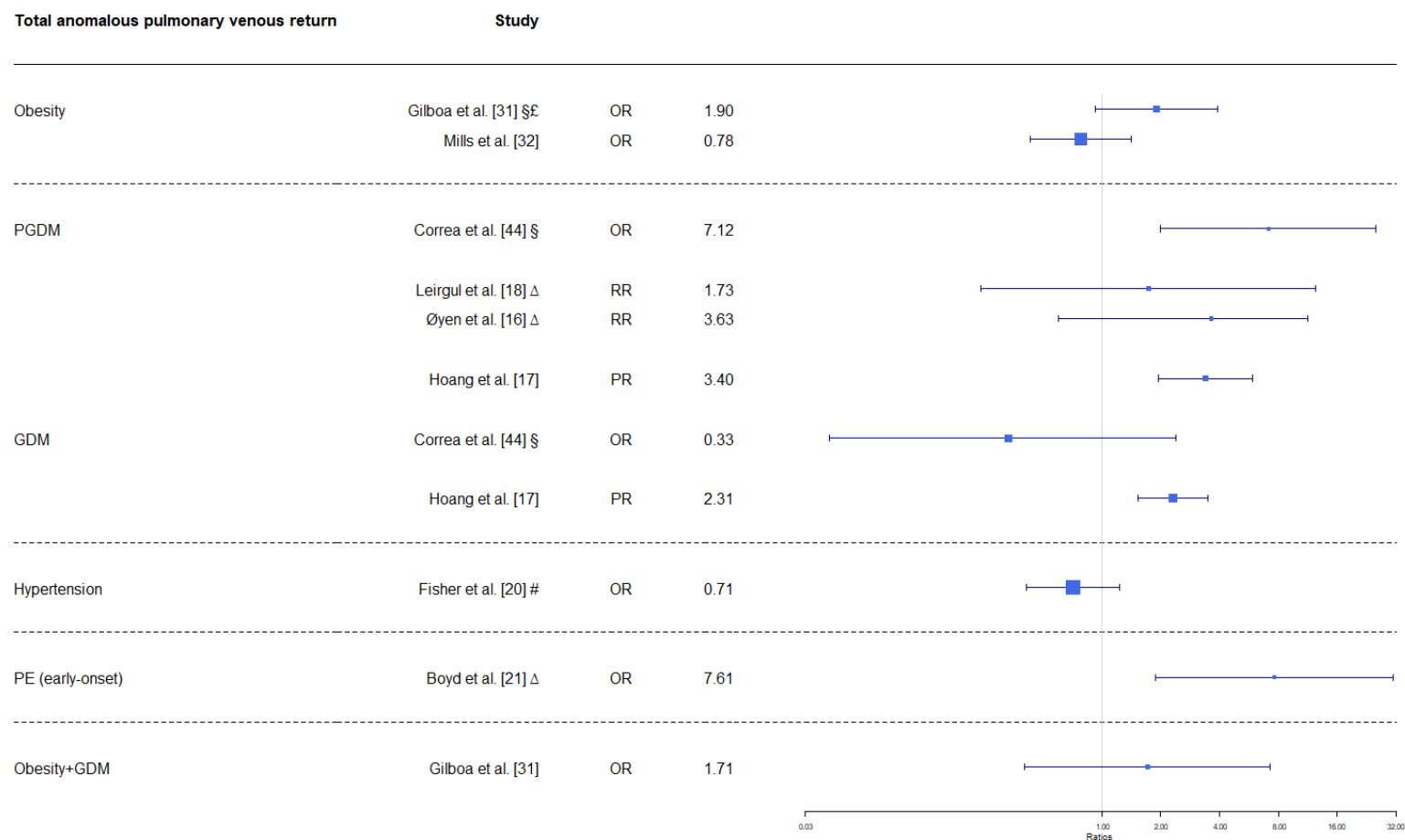
Figure S9. Maternal metabolic disorders and risk of atrioventricular septal defects in the offspring



Note: obesity is defined as BMI ≥ 30 kg/m² unless other is stated; early-onset PE defined as debut before gestational week 34; PGDM are defined as DM1 or DM2; all risk estimates are adjusted unless other is stated; *, not adjusted; \$, isolated defects; ♂, obesity defined from ICD-10 codes; £, BMI ≥ 35 kg/m²; €, BMI > 29 kg/m²; #, untreated hypertension; §, Brodwall et al. pooled early-onset PE and severe PE.

Abbreviations: BMI, body mass index; DM1, diabetes type 1; DM2, diabetes type 2; GDM, gestational diabetes; OR, odds ratio; PE, preeclampsia; PGDM, pregestational diabetes; PR, prevalence ratio; RR, risk ratio.

Figure S10. Maternal metabolic disorders and risk of total anomalous pulmonary venous return in the offspring

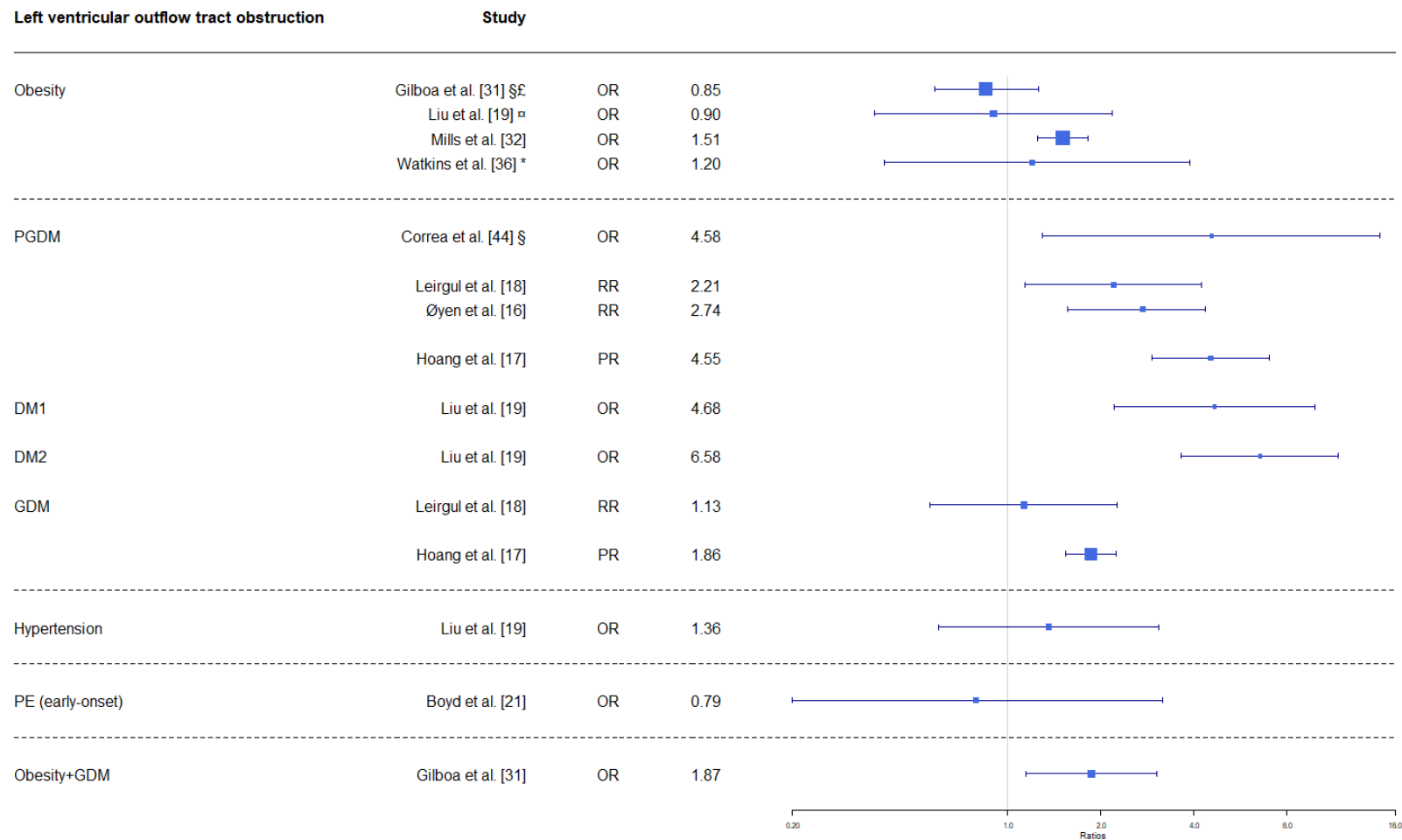


Note: obesity is defined as BMI ≥ 30 kg/m² unless other is stated; early-onset PE defined as debut before gestational week 34; PGDM are defined as DM1 or DM2; all risk estimates are adjusted unless other is stated; *, not adjusted; §, isolated defects; £, BMI ≥ 35 kg/m²; Δ, estimates for anomalous pulmonary venous return; #, untreated hypertension.

Abbreviations: BMI, body mass index; DM1, diabetes type 1; DM2, diabetes type 2; GDM, gestational diabetes; OR, odds ratio; PE, preeclampsia; PGDM, pregestational diabetes; PR, prevalence ratio; RR, risk ratio.

Supporting information

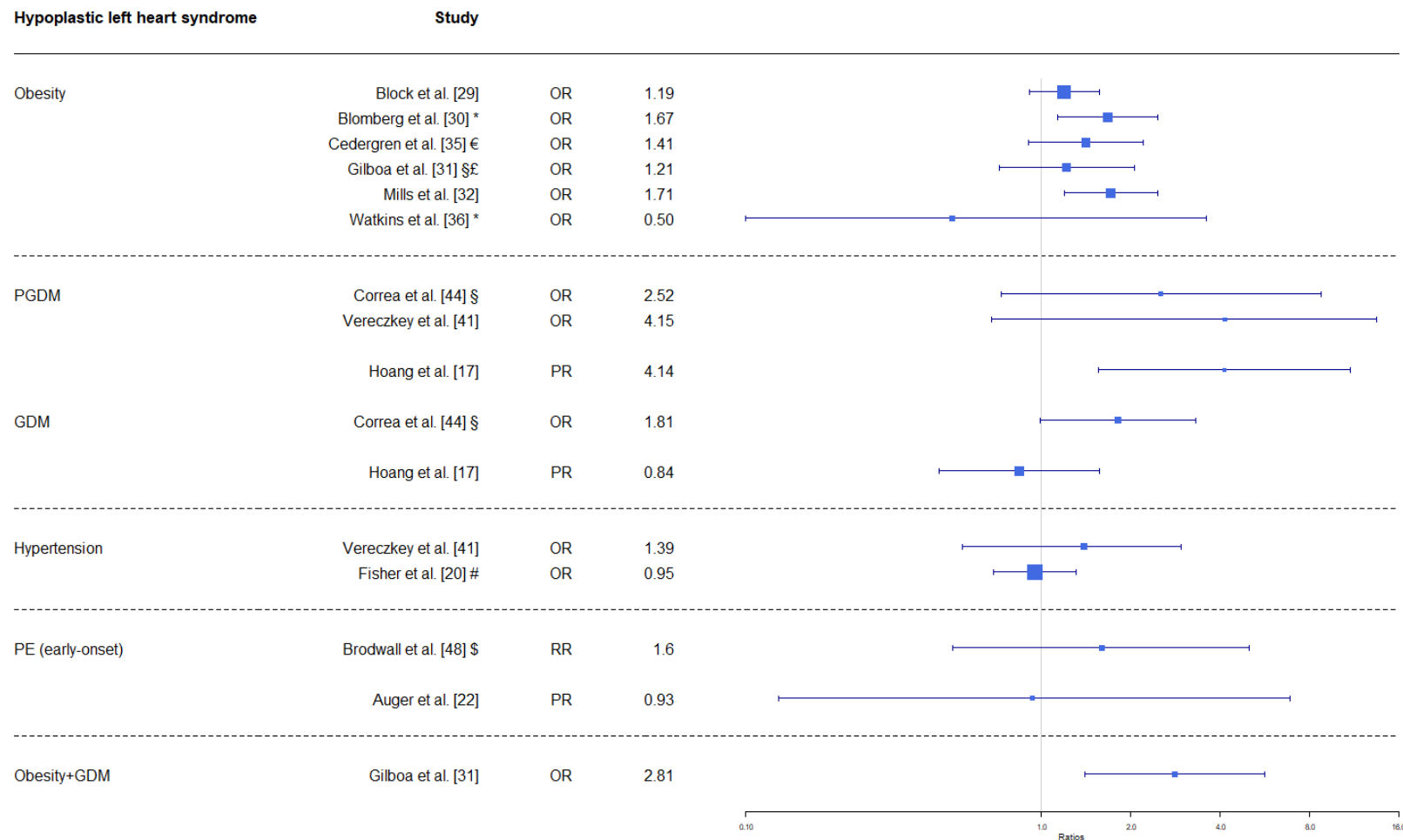
Figure S11. Maternal metabolic disorders and risk of left ventricular outflow tract obstruction in the offspring



Note: obesity is defined as BMI ≥ 30 kg/m² unless other is stated; early-onset PE defined as debut before gestational week 34; PGDM are defined as DM1 or DM2; all risk estimates are adjusted unless other is stated; *, not adjusted; §, isolated defects; ⌘, obesity defined from ICD-10 codes; £, BMI ≥ 35 kg/m².

Abbreviations: BMI, body mass index; DM1, diabetes type 1; DM2, diabetes type 2; GDM, gestational diabetes; OR, odds ratio; PE, preeclampsia; PGDM, pregestational diabetes; PR, prevalence ratio; RR, risk ratio.

Figure S12. Maternal metabolic disorders and risk of hypoplastic left heart syndrome in the offspring

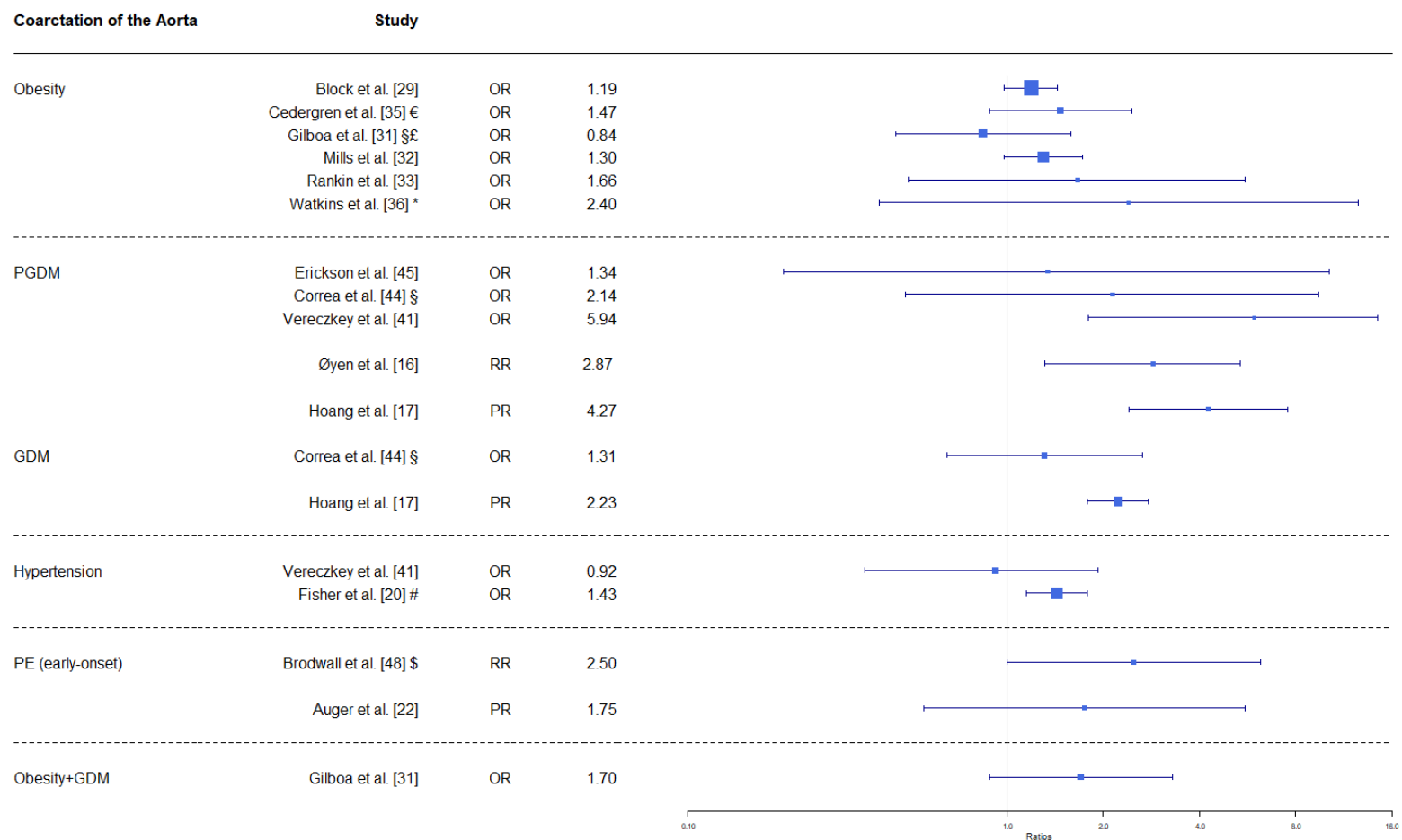


Note: obesity is defined as BMI ≥ 30 kg/m² unless other is stated; early-onset PE defined as debut before gestational week 34; PGDM are defined as DM1 or DM2; all risk estimates are adjusted unless other is stated; *, not adjusted; §, isolated defects; £, BMI ≥ 35 kg/m²; €, BMI > 29 kg/m²; #, untreated hypertension; \$, Brodwall et al. pooled early-onset PE and severe PE.

Abbreviations: BMI, body mass index; DM1, diabetes type 1; DM2, diabetes type 2; GDM, gestational diabetes; OR, odds ratio; PE, preeclampsia; PGDM, pregestational diabetes; PR, prevalence ratio; RR, risk ratio.

Supporting information

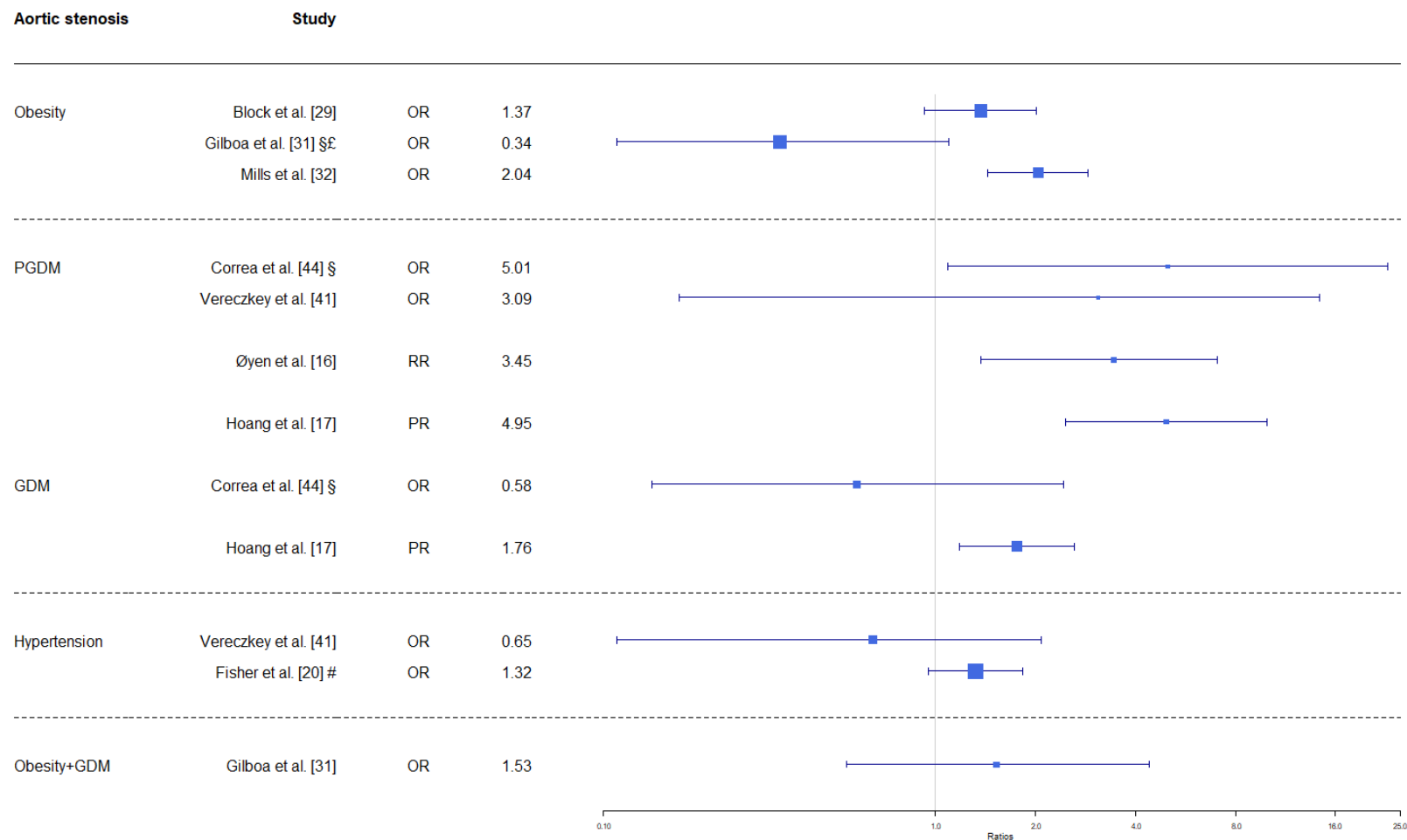
Figure S13. Maternal metabolic disorders and risk of coarctation of the Aorta in the offspring



Note: obesity is defined as BMI ≥ 30 kg/m² unless other is stated; early-onset PE defined as debut before gestational week 34; PGDM are defined as DM1 or DM2; all risk estimates are adjusted unless other is stated; *, not adjusted; §, isolated defects; £, BMI ≥ 35 kg/m²; €, BMI > 29 kg/m²; #, untreated hypertension; \$, Brodwall et al. pooled early-onset PE and severe PE.

Abbreviations: BMI, body mass index; DM1, diabetes type 1; DM2, diabetes type 2; GDM, gestational diabetes; OR, odds ratio; PE, preeclampsia; PGDM, pregestational diabetes; PR, prevalence ratio; RR, risk ratio.

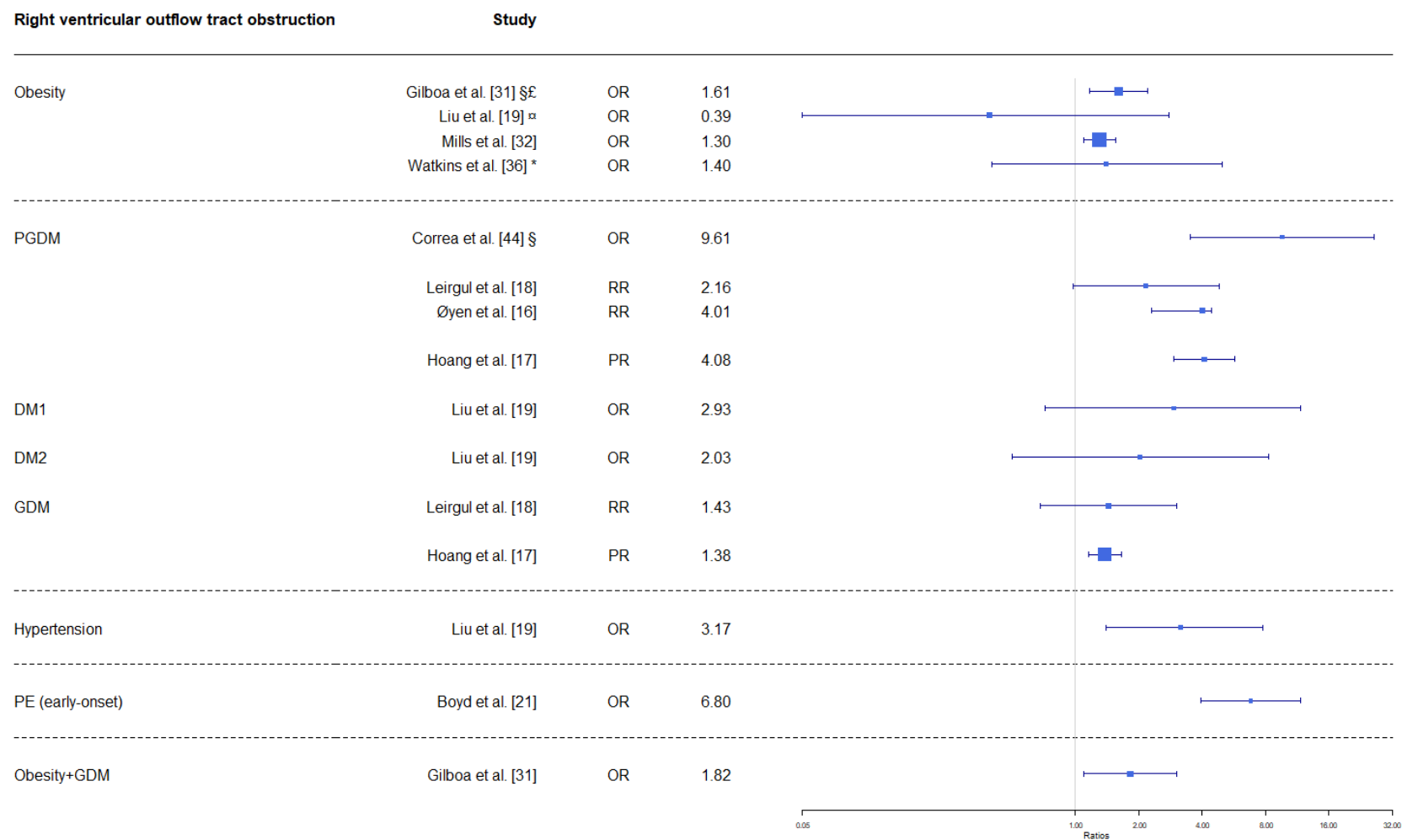
Figure S14. Maternal metabolic disorders and risk of aortic stenosis in the offspring



Note: obesity is defined as BMI ≥ 30 kg/m² unless other is stated; early-onset PE defined as debut before gestational week 34; PGDM are defined as DM1 or DM2; all risk estimates are adjusted unless other is stated; *, not adjusted; §, isolated defects; £, BMI ≥ 35 kg/m²; #, untreated hypertension.

Abbreviations: BMI, body mass index; DM1, diabetes type 1; DM2, diabetes type 2; GDM, gestational diabetes; OR, odds ratio; PE, preeclampsia; PGDM, pregestational diabetes; PR, prevalence ratio; RR, risk ratio.

Figure S15. Maternal metabolic disorders and risk of right ventricular outflow tract obstruction in the offspring

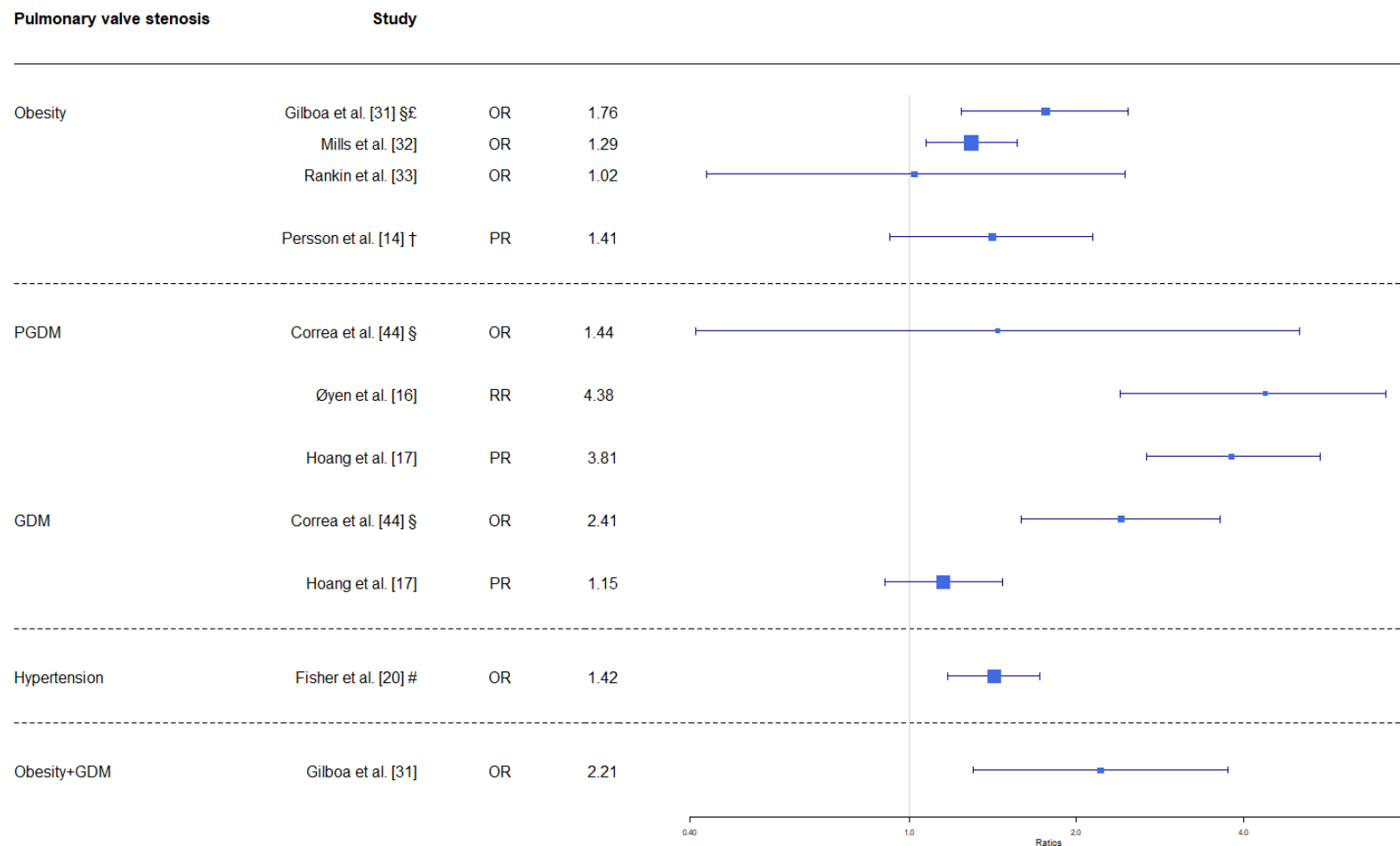


Note: obesity is defined as BMI ≥ 30 kg/m² unless other is stated; early-onset PE defined as debut before gestational week 34; PGDM are defined as DM1 or DM2; all risk estimates are adjusted unless other is stated; *, not adjusted; §, isolated defects; £, BMI ≥ 35 kg/m²; #, untreated hypertension.

Abbreviations: BMI, body mass index; DM1, diabetes type 1; DM2, diabetes type 2; GDM, gestational diabetes; OR, odds ratio; PE, preeclampsia; PGDM, pregestational diabetes; PR, prevalence ratio; RR, risk ratio.

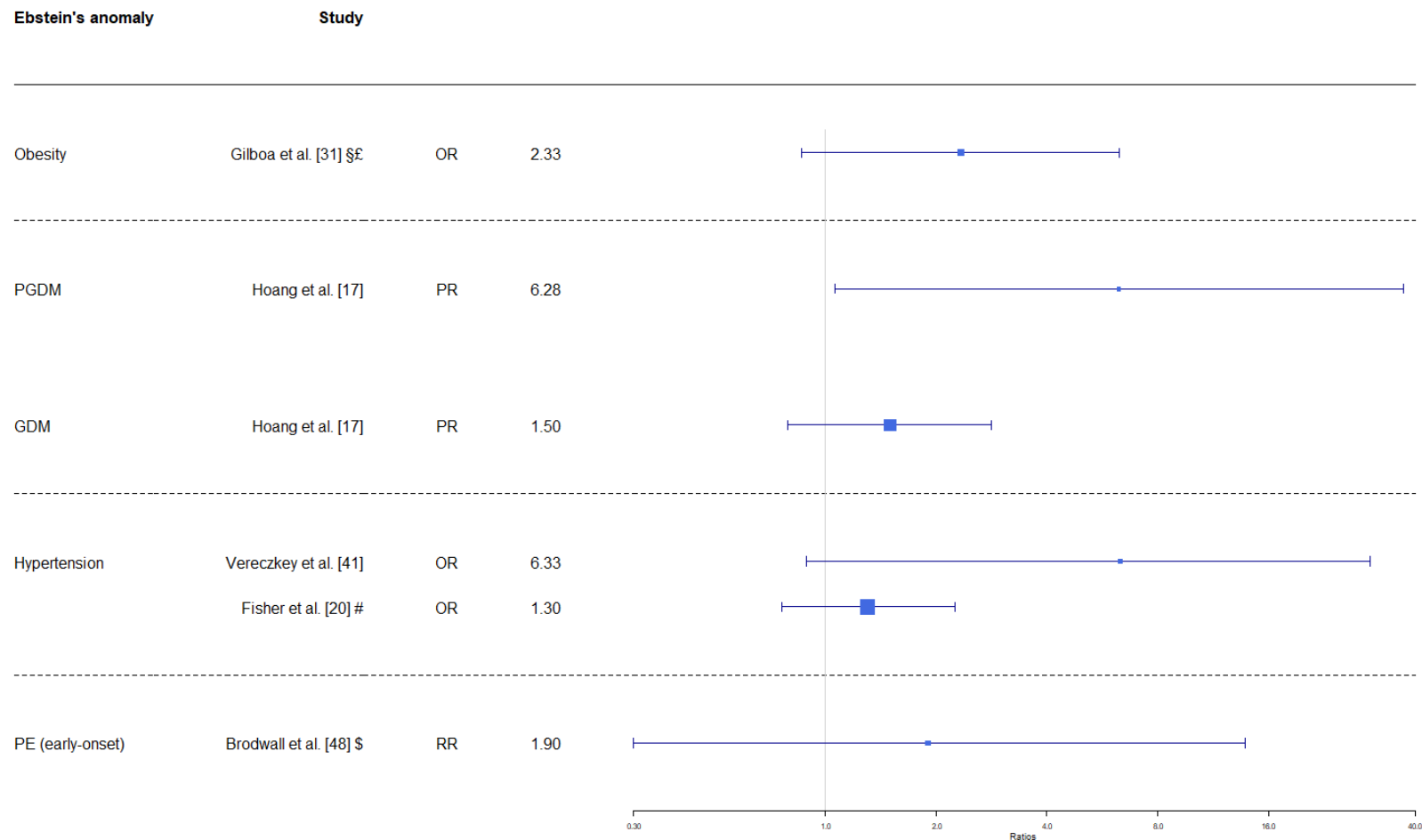
Supporting information

Figure S16. Maternal metabolic disorders and risk of pulmonary valve stenosis in the offspring



Note: obesity is defined as BMI ≥ 30 kg/m² unless other is stated; early-onset PE defined as debut before gestational week 34; PGDM are defined as DM1 or DM2; all risk estimates are adjusted unless other is stated; *, not adjusted; §, isolated defects; £, BMI ≥ 35 kg/m²; †, BMI 35-<40 kg/m²; #, untreated hypertension. Abbreviations: BMI, body mass index; DM1, diabetes type 1; DM2, diabetes type 2; GDM, gestational diabetes; OR, odds ratio; PE, preeclampsia; PGDM, pregestational diabetes; PR, prevalence ratio; RR, risk ratio.

Figure S17. Maternal metabolic disorders and risk of Ebstein’s anomaly in the offspring

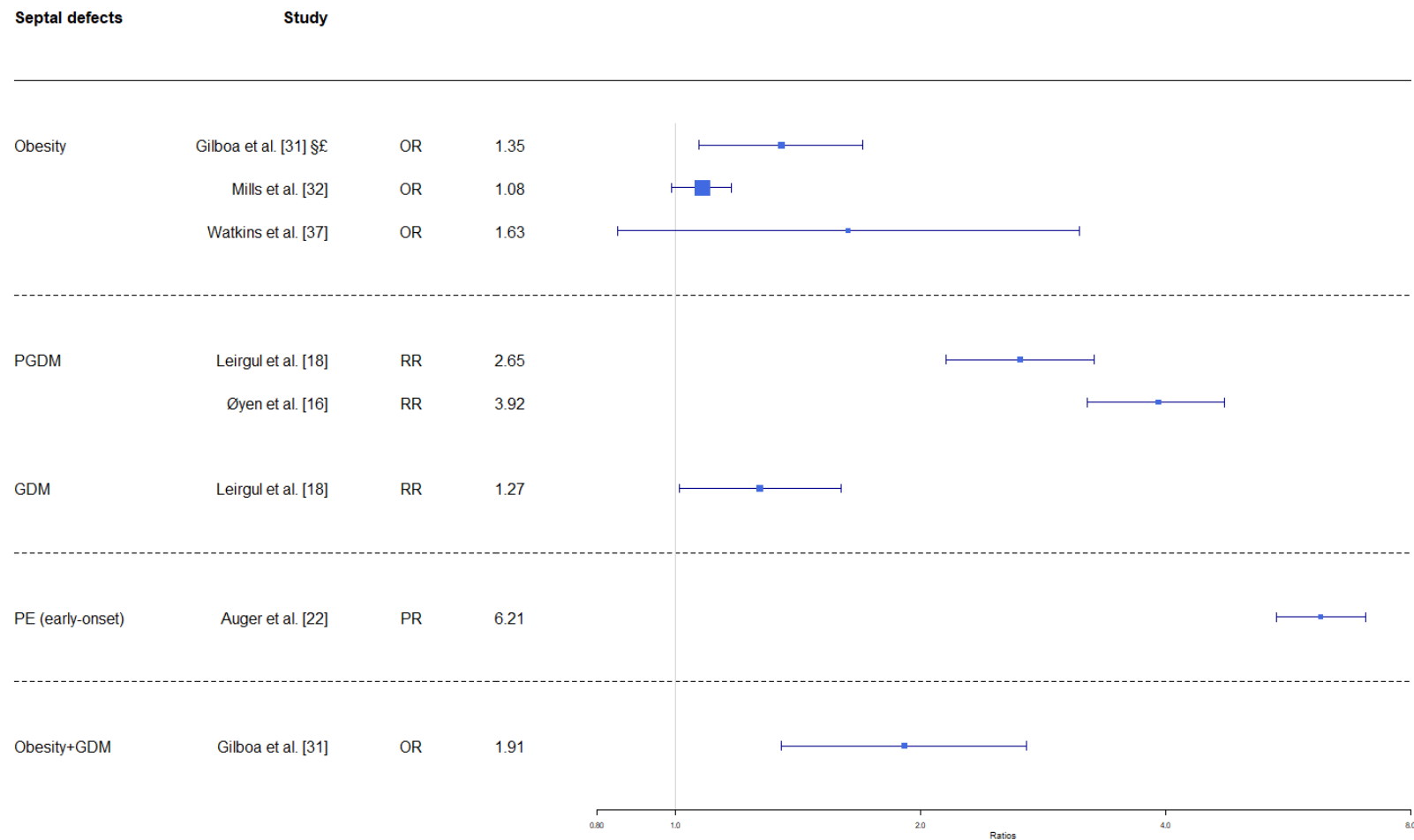


Note: obesity is defined as BMI ≥ 30 kg/m² unless other is stated; early-onset PE defined as debut before gestational week 34; PGDM are defined as DM1 or DM2; all risk estimates are adjusted unless other is stated; *, not adjusted; §, isolated defects; £, BMI ≥ 35 kg/m²; #, untreated hypertension; \$, Brodwall et al. pooled early-onset PE and severe PE.

Abbreviations: BMI, body mass index; DM1, diabetes type 1; DM2, diabetes type 2; GDM, gestational diabetes; OR, odds ratio; PE, preeclampsia; PGDM, pregestational diabetes; PR, prevalence ratio; RR, risk ratio.

Supporting information

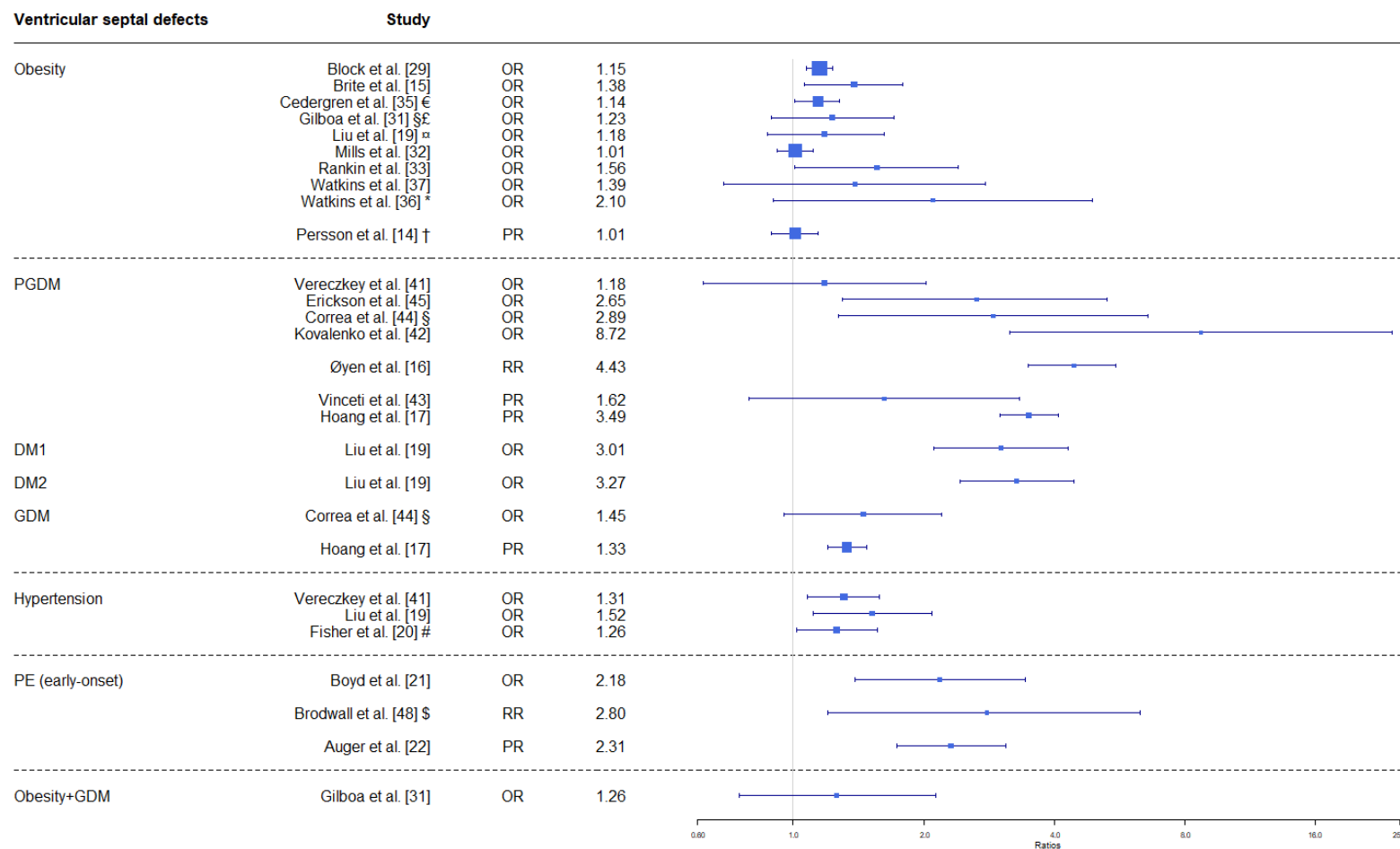
Figure S18. Maternal metabolic disorders and risk of septal defects in the offspring



Note: obesity is defined as BMI ≥ 30 kg/m² unless other is stated; early-onset PE defined as debut before gestational week 34; PGDM are defined as DM1 or DM2; all risk estimates are adjusted unless other is stated; *, not adjusted; §, isolated defects; £, BMI ≥ 35 kg/m².

Abbreviations: BMI, body mass index; DM1, diabetes type 1; DM2, diabetes type 2; GDM, gestational diabetes; OR, odds ratio; PE, preeclampsia; PGDM, pregestational diabetes; PR, prevalence ratio; RR, risk ratio.

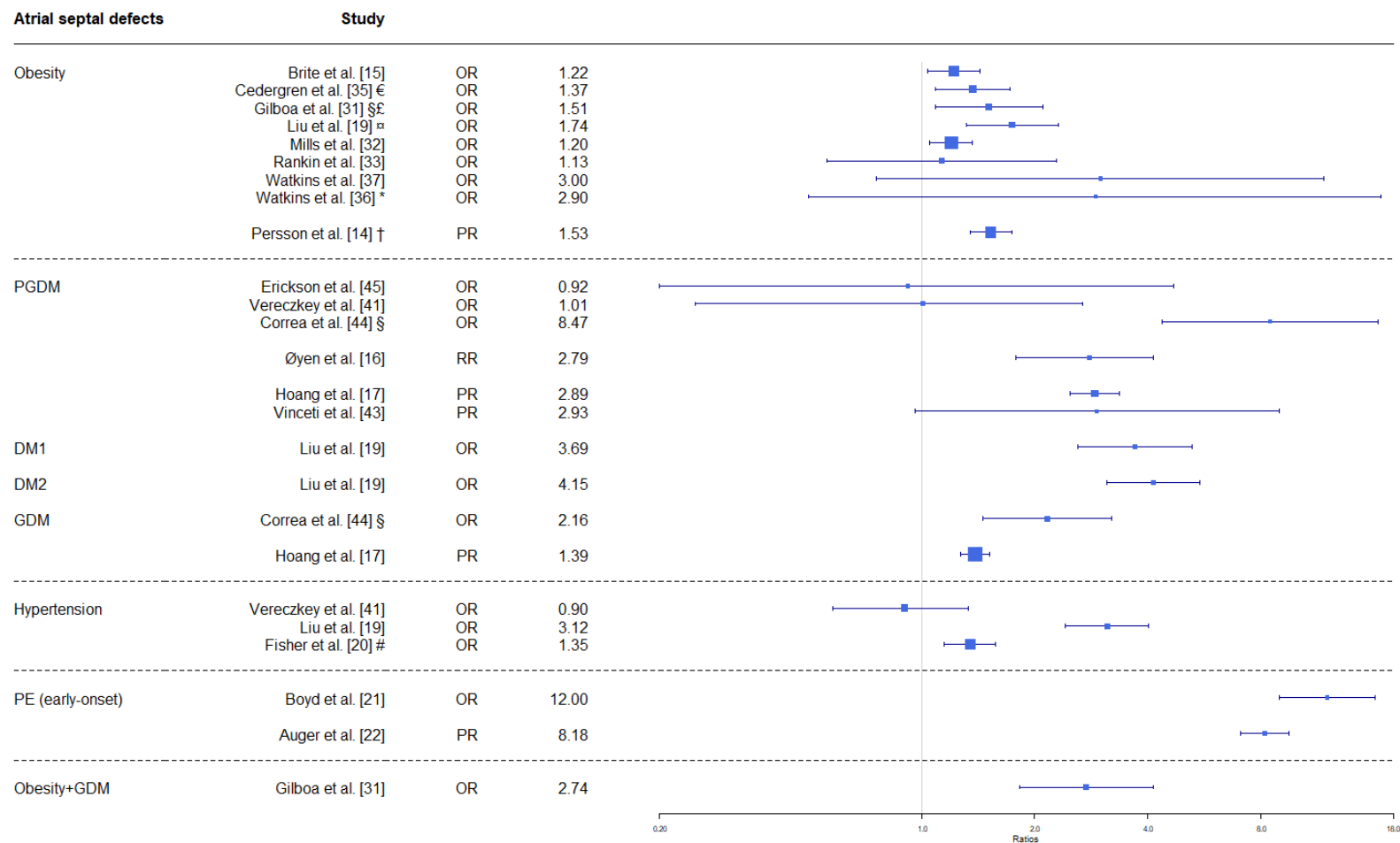
Figure S19. Maternal metabolic disorders and risk of ventricular septal defects in the offspring



Note: obesity is defined as BMI ≥ 30 kg/m² unless other is stated; early-onset PE defined as debut before gestational week 34; PGDM are defined as DM1 or DM2; all risk estimates are adjusted unless other is stated; *, not adjusted; §, isolated defects; ¨, obesity defined from ICD-10 codes; £, BMI ≥ 35 kg/m²; €, BMI > 29 kg/m²; †, BMI 35-<40 kg/m²; #, untreated hypertension; \$, Brodwall et al. pooled early-onset PE and severe PE.

Abbreviations: BMI, body mass index; DM1, diabetes type 1; DM2, diabetes type 2; GDM, gestational diabetes; OR, odds ratio; PE, preeclampsia; PGDM, pregestational diabetes; PR, prevalence ratio; RR, risk ratio.

Figure S20. Maternal metabolic disorders and risk of atrial septal defects in the offspring



Note: obesity is defined as BMI ≥ 30 kg/m² unless other is stated; early-onset PE defined as debut before gestational week 34; PGDM are defined as DM1 or DM2; all risk estimates are adjusted unless other is stated; *, not adjusted; §, isolated defects; ♂, obesity defined from ICD-10 codes; £, BMI ≥ 35 kg/m²; €, BMI > 29 kg/m²; †, BMI 35- <40 kg/m²; #, untreated hypertension.

Abbreviations: BMI, body mass index; DM1, diabetes type 1; DM2, diabetes type 2; GDM, gestational diabetes; OR, odds ratio; PE, preeclampsia; PGDM, pregestational diabetes; PR, prevalence ratio; RR, risk ratio.