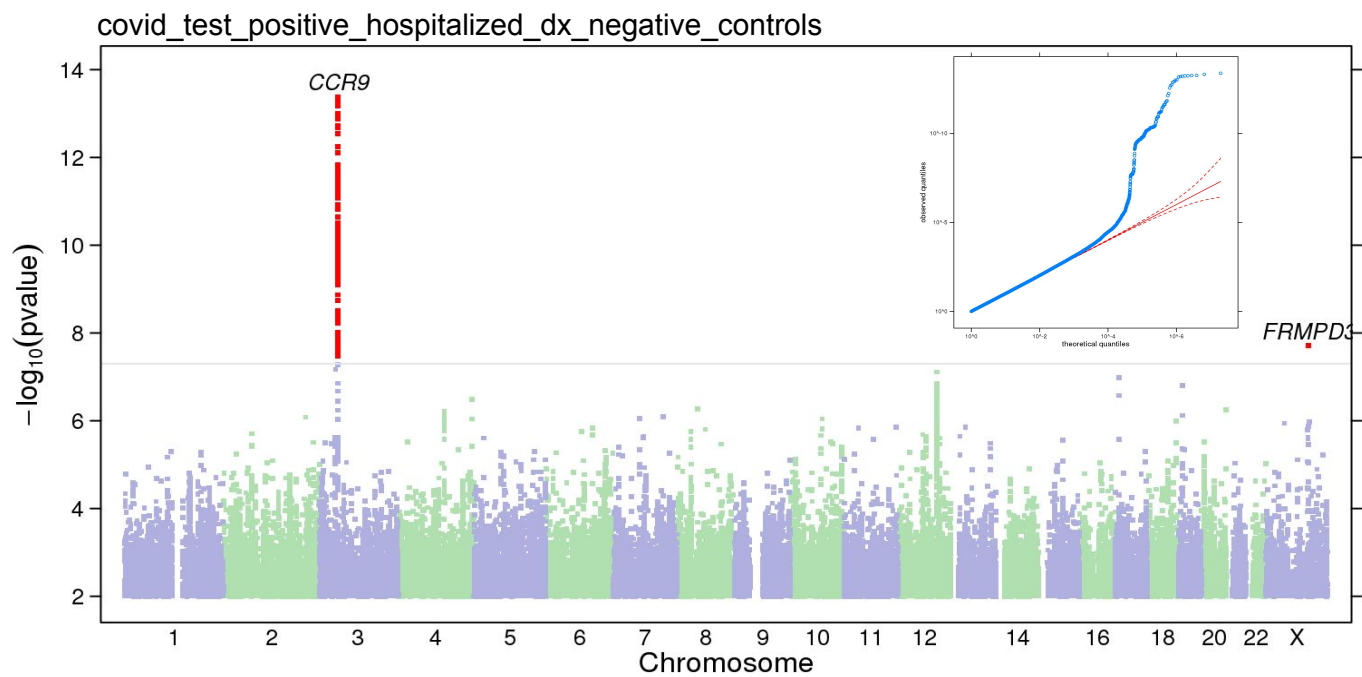
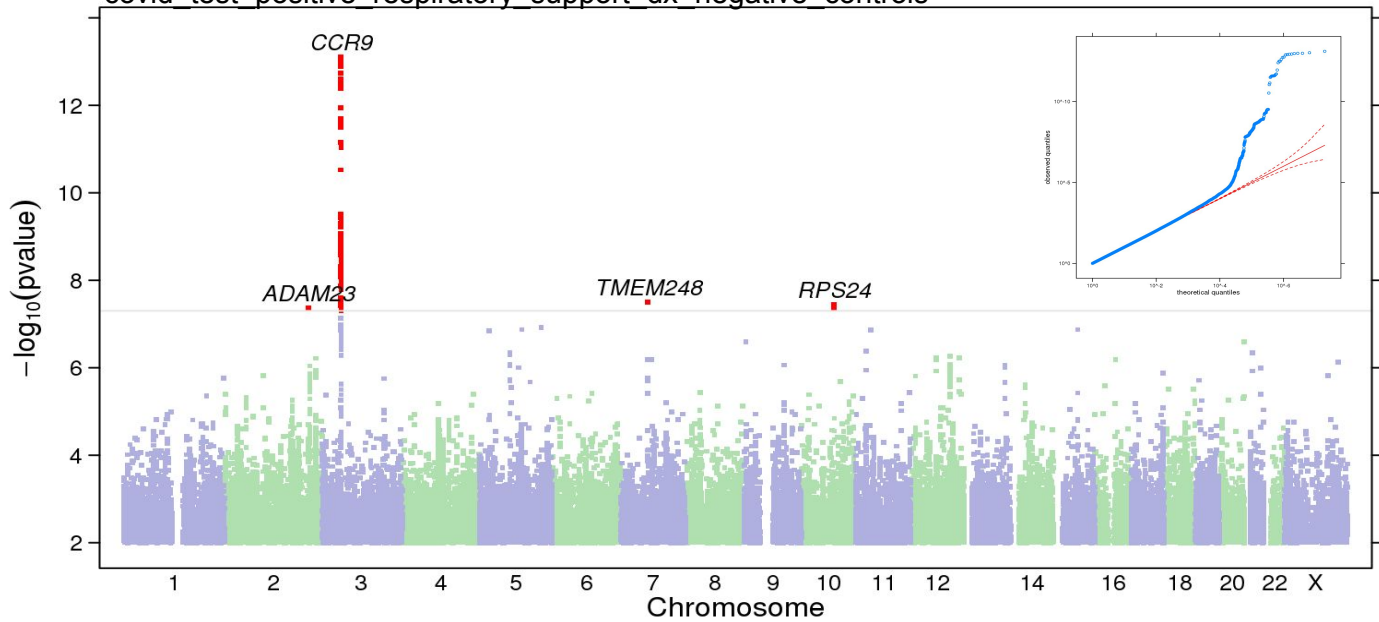


Supplemental Figure 1: Estimated prevalence of COVID-19 test positive individuals on a per-county basis within the continental United States.



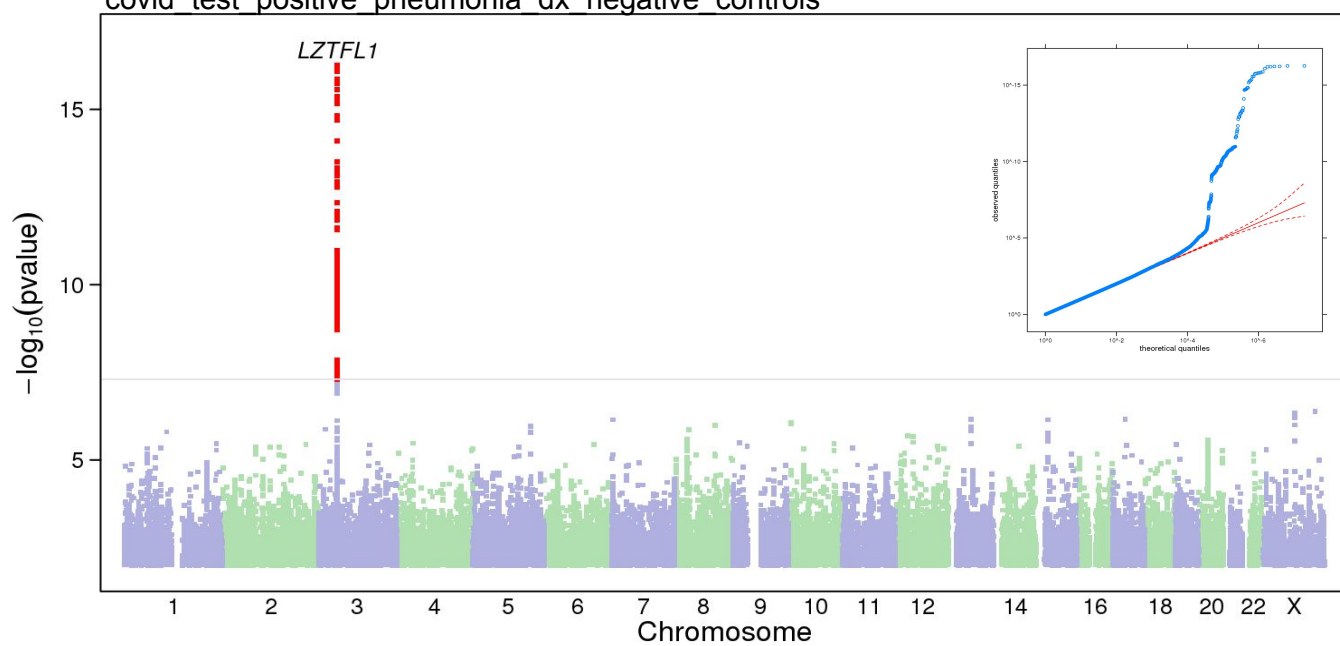
Supplemental Figure 2: Manhattan and QQ plots for 'COVID-19 test positive with hospitalization' phenotype from trans-ethnic meta-analysis. Cases reported a positive COVID-19 test and were hospitalized with their symptoms. Controls did not report a COVID-19 diagnosis (were neither diagnosed with nor tested positive for COVID-19).

covid test positive respiratory support dx negative controls

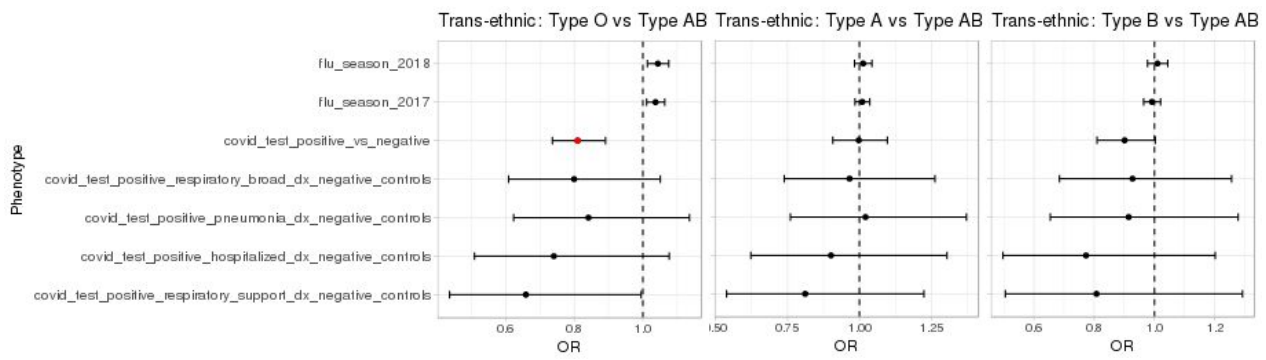


Supplemental Figure 3: Manhattan and QQ plots for ‘COVID-19 test positive with respiratory support’ from trans-ethnic meta-analysis. Cases reported a positive COVID-19 test and received respiratory support in the form of supplementary oxygen or ventilation. Controls did not report a COVID-19 diagnosis (were neither diagnosed with nor tested positive for COVID-19).

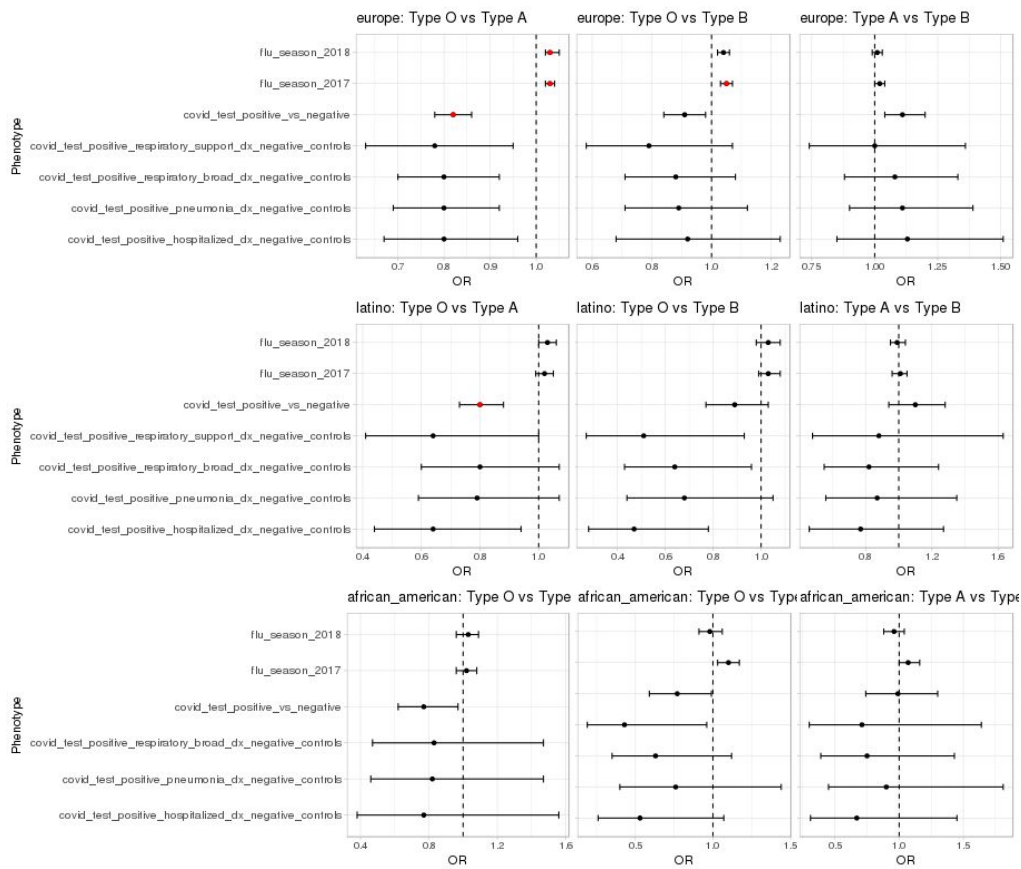
covid test positive pneumonia dx negative controls



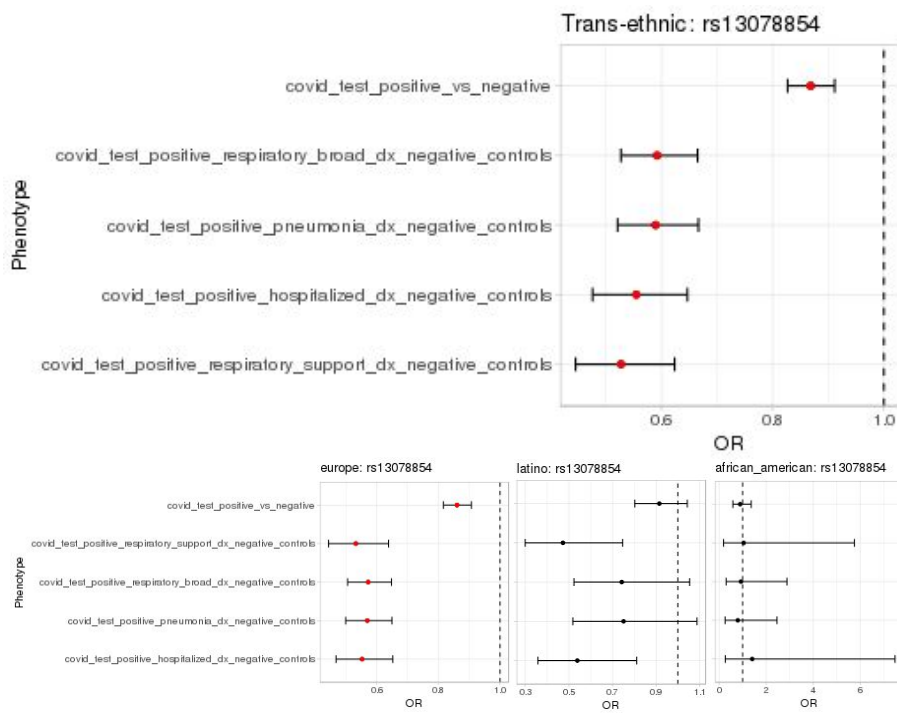
Supplemental Figure 4: Manhattan and QQ plots for ‘COVID-19 test positive with pneumonia’ from trans-ethnic meta-analysis. Cases reported a positive COVID-19 test and experienced pneumonia. Controls did not report a COVID-19 diagnosis (were neither diagnosed with nor tested positive for COVID-19).



Supplemental Figure 5: Comparison of AB blood group to other ABO blood groups in the trans-ethnic meta-analysis. Statistically significant associations (p-value < 0.001) are highlighted in red.



Supplemental Figure 6: Comparison of blood groups across phenotypes and across populations: European, African American, and Latino. Statistically significant associations (p-value < 0.001) are highlighted in red.



Supplemental Figure 7: Forest plot of chr3p21.31 index SNP (rs13078854) in the trans-ethnic analysis and for each population. Genome-wide significant associations are highlighted in red.