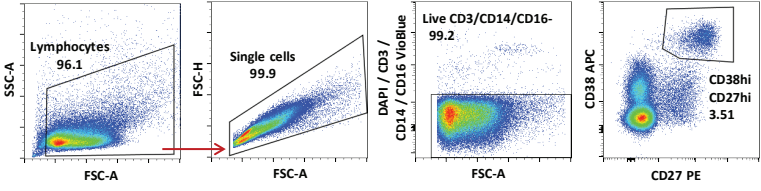


Supplementary Figure 1

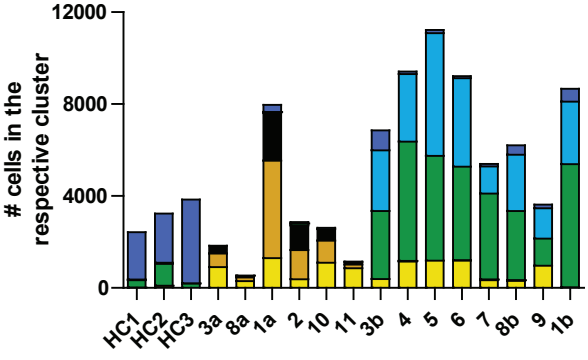
a

Patient ID	sex	age	days after ICU admission at time of analysis	days after start of symptoms at time of analysis	other viral infections	other bacterial infections	mortality	type 2 diabetes mellitus	chronic heart failure	coronary heart disease	spike protein-specific antibodies	RBD-specific antibodies	nucleoprotein-specific antibodies
HC1	m	42	N/A	N/A	n	n	n	n	n	n	n	n	n
HC2	f	55	N/A	N/A	n	n	n	n	n	n	n	n	n
HC3	m	52	N/A	N/A	n	n	n	n	n	n	n	n	n
HC4	m	72	N/A	N/A	n	n	n	n	n	n	n	N/A	N/A
1	m	76	4 / 59	not available	n	y	n	n	n	y	n/y	n/y	n/y
2	f	91	5	12	n	n	n	n	y	y	n	n	n
3	f	58	3 / 9	not available	n	n	n	y	n	n	n/y	n/y	n/y
4	f	76	9	13	n	n	n	n	n	n	y	y	y
5	m	72	9	23	n	y	n	n	n	y	y	y	y
6	m	79	12	19	n	y	y	n	n	n	y	y	y
7	m	69	13	19	n	y	n	y	n	n	y	y	y
8	f	83	3 / 18	13 / 28	n	y	n	y	n	y	n/y	n/y	n/y
9	m	76	31 / 46	36 / 51	n	y	n	n	n	n	y/y	y/y	y/y
10	f	77	5	15	n	y	y	y	n	n	n	n	n
11	f	76	7	36	n	y	n	n	n	n	y	y	y

b

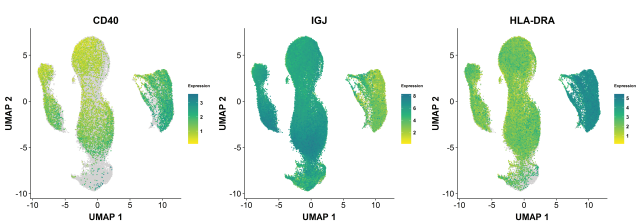


c

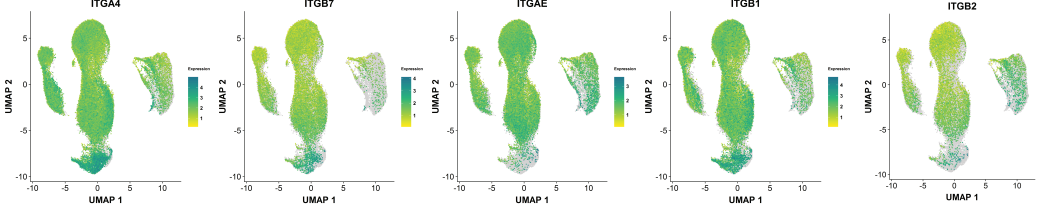


d

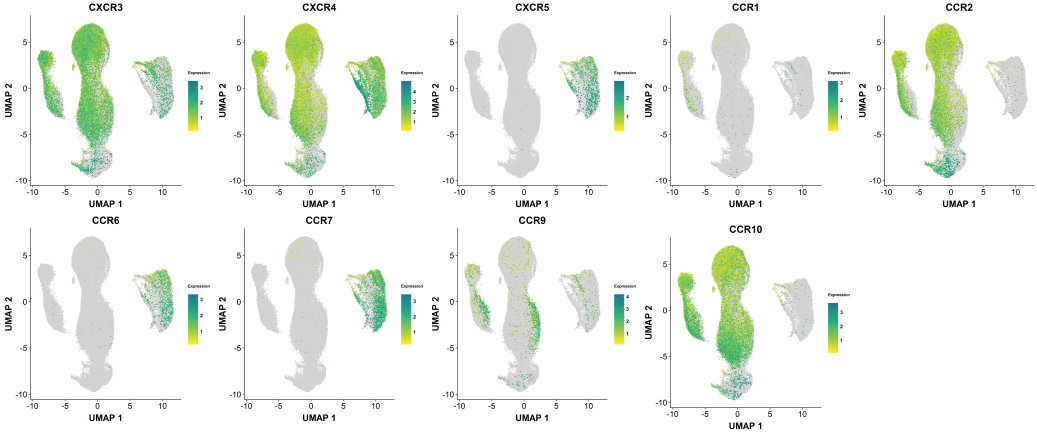
Activation/Function



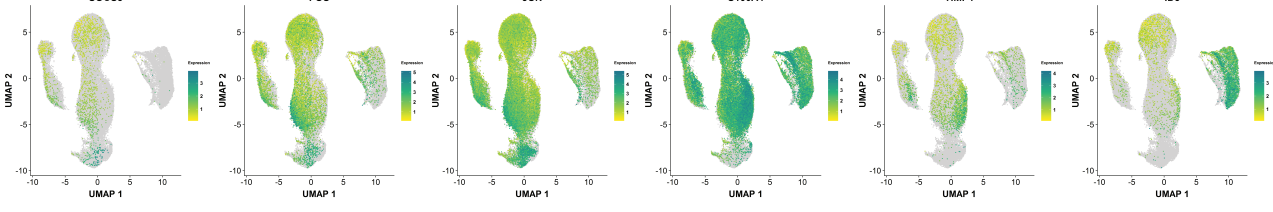
Integrins



Chemokine receptors



STAT3 / SMAD associated



- 1. Experienced B cells
- 2. MKI67+ activated B cells
- 3. Activated B cells
- 4. Type I IFN MKI67+ activated B cells
- 5. Type I IFN activated B cells
- 6. Plasma cells