

1 **Supplementary Material**

2

3 **Table of Contents**

- 4 • **Supplementary Table 1.** Demographic and clinical summary of patients evaluated  
5 by the SARS-CoV-2 Direct Antigen Rapid Test (DART).
- 6 • **Figure 2- Figure Supplement 1.** Graphical scheme displaying the relationships  
7 between the stages of quarantine and infection in *SIDHRE-Q* model.
- 8 • **Figure 3 - Figure Supplement 1.** COVID-19 Outcomes as a result of Frequent  
9 Rapid Testing Protocol with variable test performances using *SIDHRE-Q* Model.
- 10 • **Figure 3 - Figure Supplement 2.** Time series of the four fitted parameters  $\alpha$ ,  $\nu$ ,  $\mu$ ,  
11 and  $\tau$  for MA, LA, NYC, and SJRP.
- 12 • **Figure 4 - Figure Supplement 1.** Effect of Rapid Testing Protocol under variable  
13 testing sensitivities and increasing frequency under the *SIDHRE-Q* Model (80%  
14 test specificity).
- 15 • **Figure 5 - Figure Supplement 1.** Effect of County Based Rapid Testing strategy  
16 on COVID-19 outcomes in California.
- 17 • **Figure 5 - Figure Supplement 2.** Time series of the three fitted pieces of data  
18 Cumulative Cases, Daily Hospitalized, and Cumulative Deaths (left to right) for  
19 each county receiving testing in CA; Ventura (2A), Stanislaus (2B), Santa Clara  
20 (2C), San Joaquin (2D), San Francisco (2E), San Diego (2F), San Bernardino (2G),  
21 Sacramento (2H), Orange (2I), Los Angeles (2J), Kern (2K), Fresno (2L), Alameda  
22 (2M).

23

24 **Supplementary Table**

Supplemental Table 1. Demographic and clinical summary of patients evaluated by the SARS-CoV-2 Direct Antigen Rapid Test (DART).

25

	TOTAL			COVID-19 positive			COVID-19 negative		
	N response	N or mean of positive	% or standard deviation	N response	N or mean of positive	% or standard deviation	N response	N or mean of positive	% or standard deviation
<b>Age</b>	121	40.43	17.17	72	43.37	12.58	49	36.12	15.3
0-14 yr	121	5	4.1%	72	2	2.8%	49	3	6.1%
15-29 yr	121	30	24.8%	72	17	23.6%	49	13	26.5%
30-59 yr	121	69	57.0%	72	39	54.2%	49	30	61.2%
≥60 yr	121	17	14.0%	72	14	19.4%	49	3	6.1%
<b>Gender</b>									
Female	121	75	62.0%	72	43	59.7%	49	32	65.3%
Male	121	46	38.0%	72	29	40.3%	49	17	34.7%
<b>Comorbidities</b>									
Cardiovascular disease	115	7	6.1%	71	6	8.5%	44	1	2.3%
Diabetes	115	9	7.8%	71	6	8.5%	44	3	6.8%
Asthma	115	1	0.9%	71	1	1.4%	44	0	0.0%
Pulmonary disease	115	4	3.5%	71	1	1.4%	44	3	6.8%
Chronic Kidney disease (Stage III, IV, V)	115	12	10.4%	71	1	1.4%	44	11	25.0%
Immunosuppression	115	3	2.6%	71	1	1.4%	44	0	0.0%
Post pregnant	115	2	1.7%	71	1	1.4%	44	1	2.3%
Neurologic Disease	115	0	0.0%	71	0	0.0%	44	0	0.0%
Chromosomal disease	115	0	0.0%	71	0	0.0%	44	0	0.0%
Hematological diseases	115	0	0.0%	71	0	0.0%	44	0	0.0%
Liver disease	115	0	0.0%	71	0	0.0%	44	0	0.0%
Obesity	115	0	0.0%	71	0	0.0%	44	0	0.0%
Hospitalization	116	5	4.3%	71	5	7.0%	45	0	0.0%
Asymptomatic	116	8	6.9%	71	6	8.5%	45	2	4.4%
<b>Initial symptoms</b>									
Fever	116	40	34.5%	71	32	45.1%	45	8	17.8%
Cough	116	66	56.9%	71	42	59.2%	45	24	53.3%
Sore throat	116	47	40.5%	71	22	31.0%	45	25	55.6%
Dyspnea	116	25	21.6%	71	17	23.9%	45	8	17.8%
Low Saturation	116	4	3.5%	71	4	5.7%	45	0	0.0%
Diarrhea	116	4	3.5%	71	4	5.7%	45	0	0.0%
Vomit	116	3	2.6%	71	2	2.9%	45	1	2.2%
Headache	116	43	37.4%	71	28	40.0%	45	15	33.3%
Days of fever/symptoms	120	3.23	2.64	71	3.29	2.46	49	3.14	2.9

26

27

28

29

30

31

32

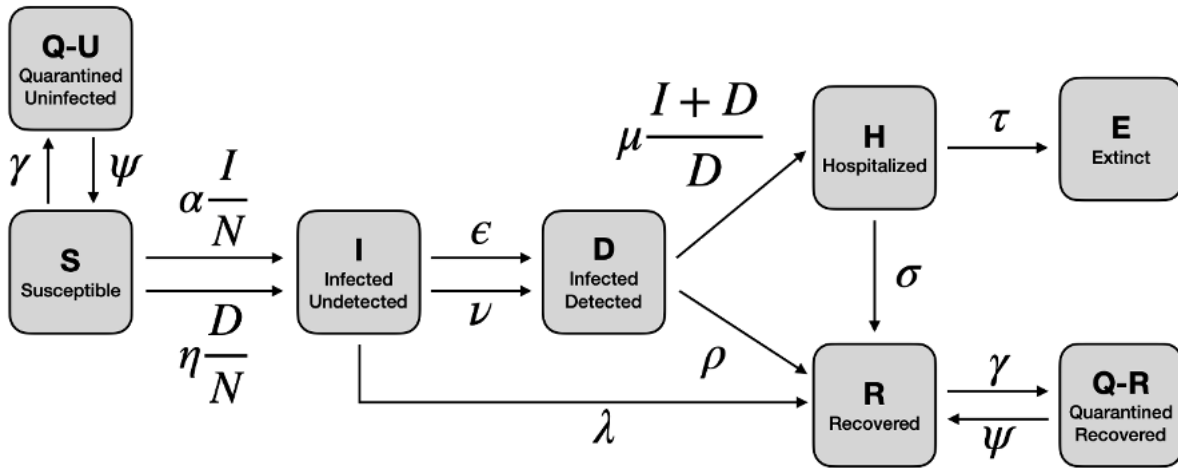
33

34 **Supplementary Figures**

35

36 **Figure 2- Figure Supplement 1**

37



38

**Figure 2- Figure Supplement 1.** Graphical scheme displaying the relationships between the stages of quarantine and infection in *SIDHRE-Q* model: **Q-U**, quarantine uninfected; **S**, susceptible (uninfected); **I**, infected undetected (pre-testing and infected); **D**, infected detected (infection diagnosis through testing); **H**, hospitalized (infected with life threatening symptom progression); **R**, recovered (healed); **E**, extinct (dead); and **Q-R**, quarantine recovered (healed but in quarantine by false positive testing).

39

40

41

42

43

44

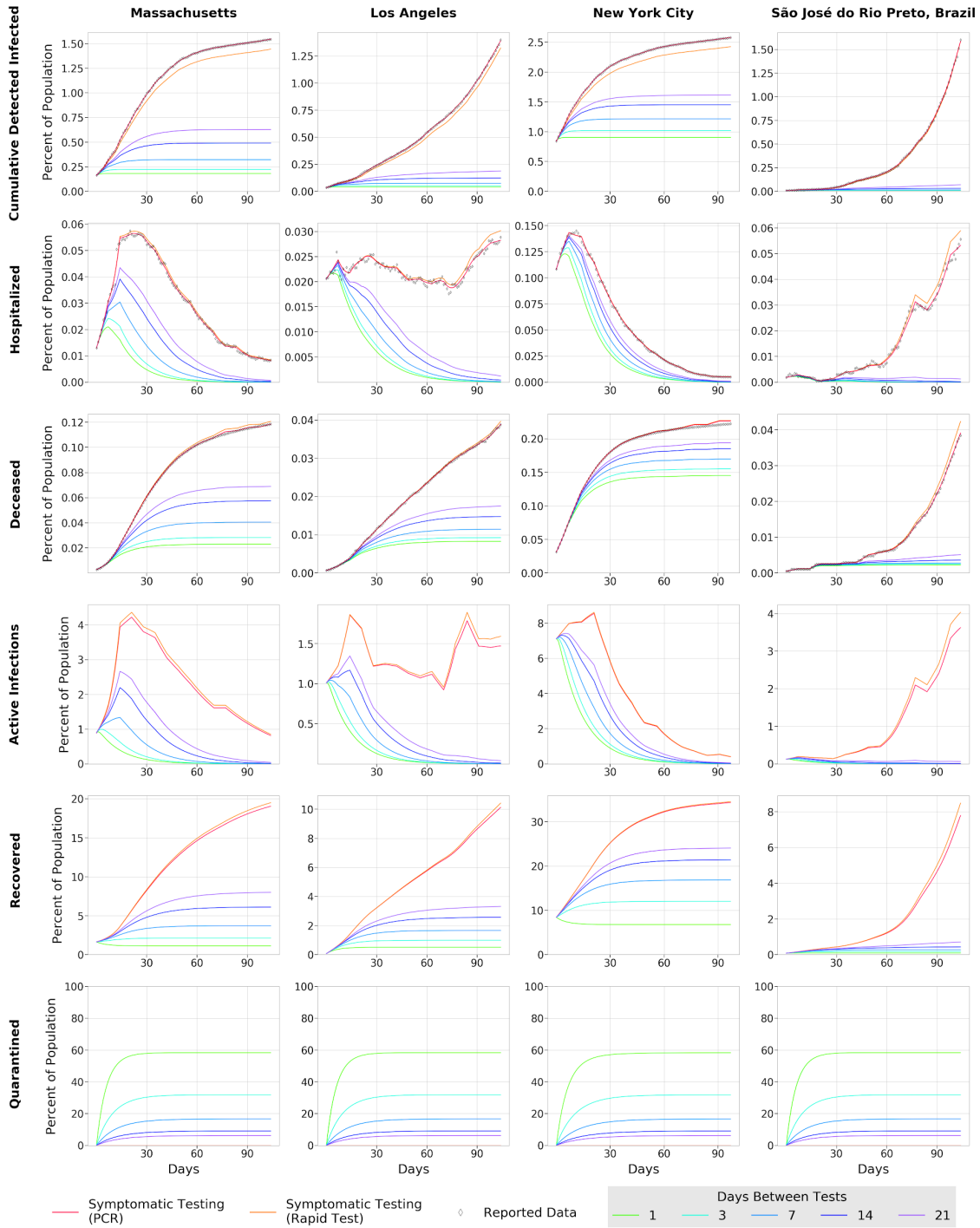
45

46

47

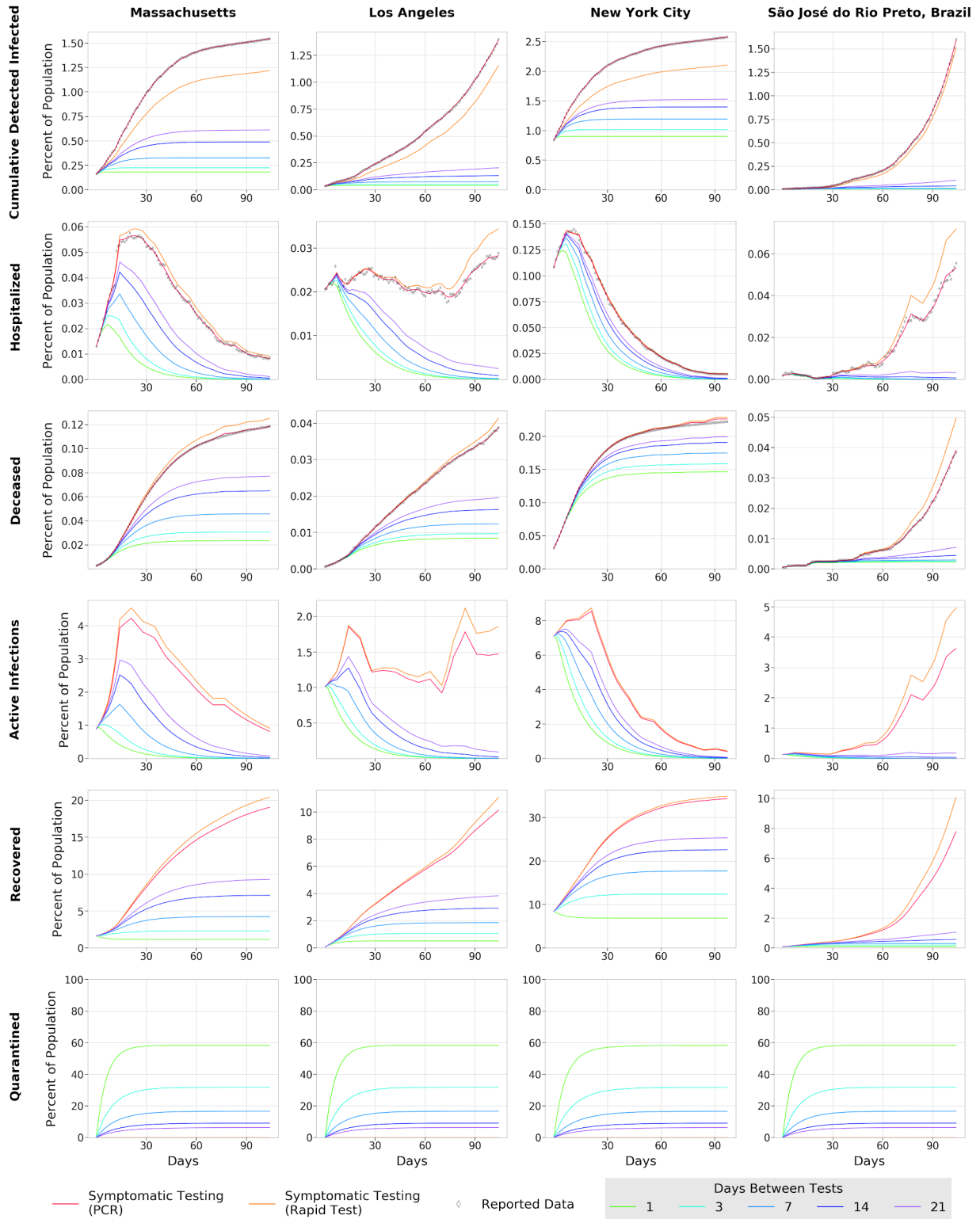
48 **Figure 3 - Figure Supplement 1**

49 **1A**

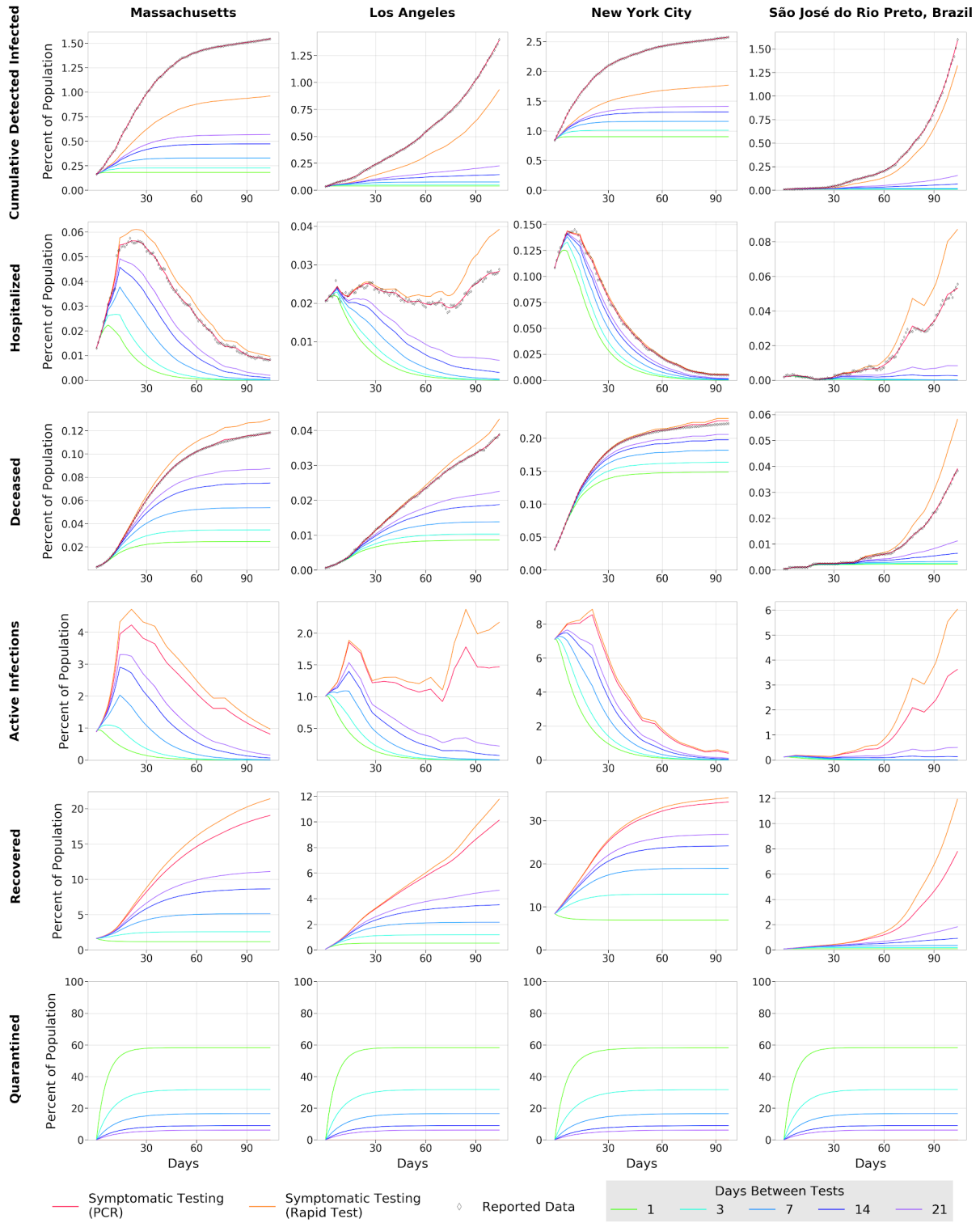


Sensitivity: 90.0% Specificity: 90.0%



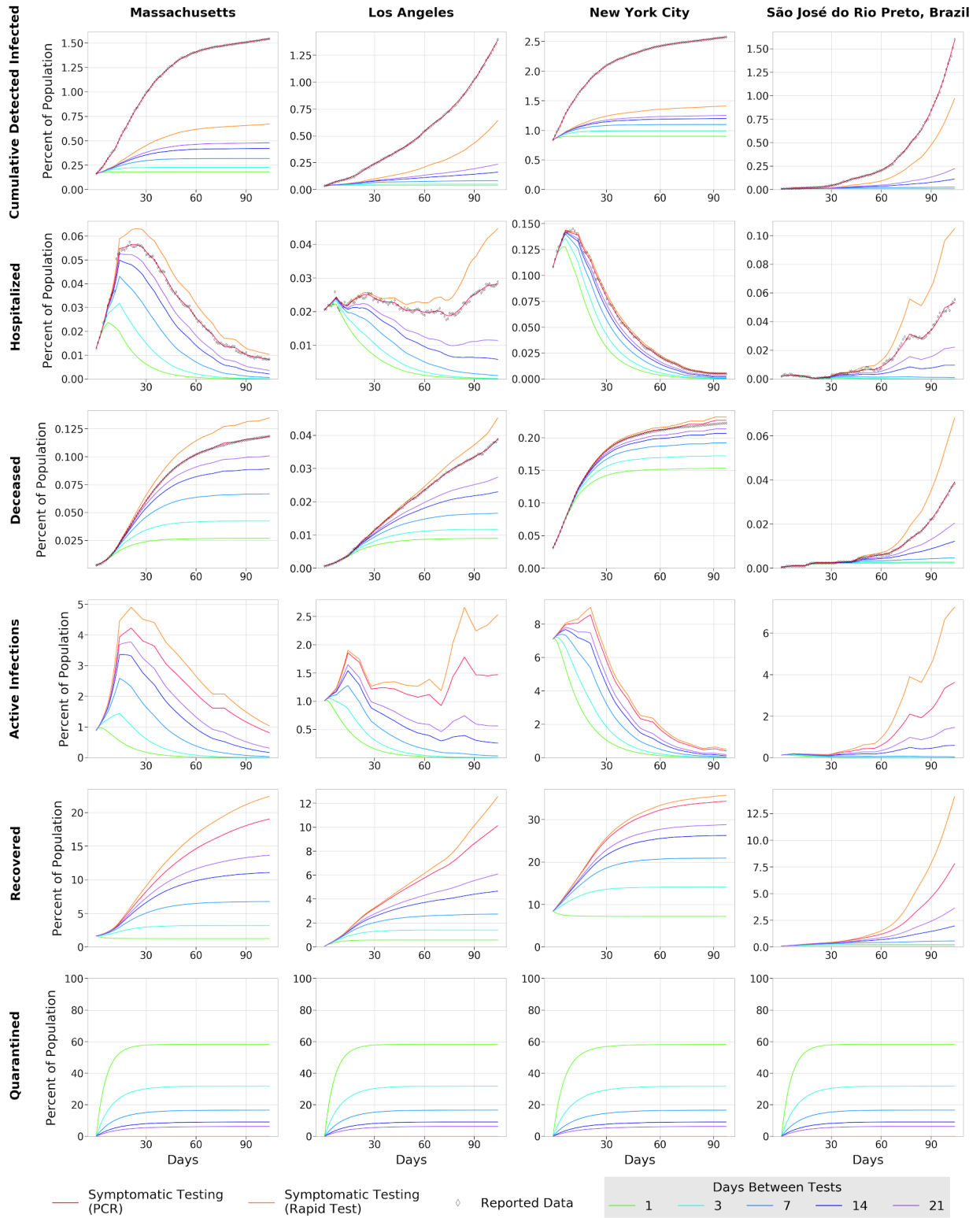


Sensitivity: 70.0% Specificity: 90.0%



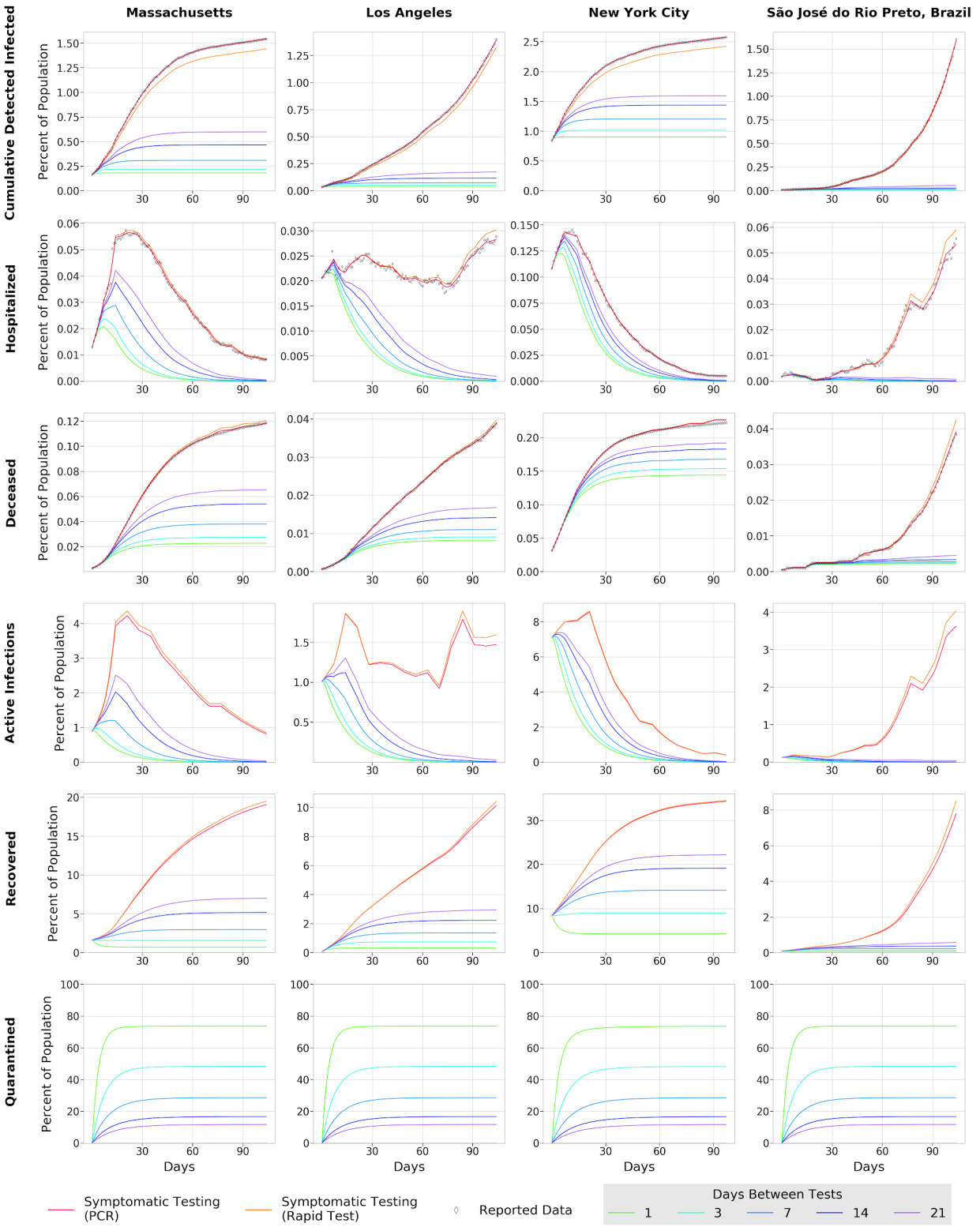
— Symptomatic Testing (PCR)   
 — Symptomatic Testing (Rapid Test)   
 ◇ Reported Data   
 Days Between Tests: — 1   
 — 3   
 — 7   
 — 14   
 — 21

Sensitivity: 50.0% Specificity: 90.0%

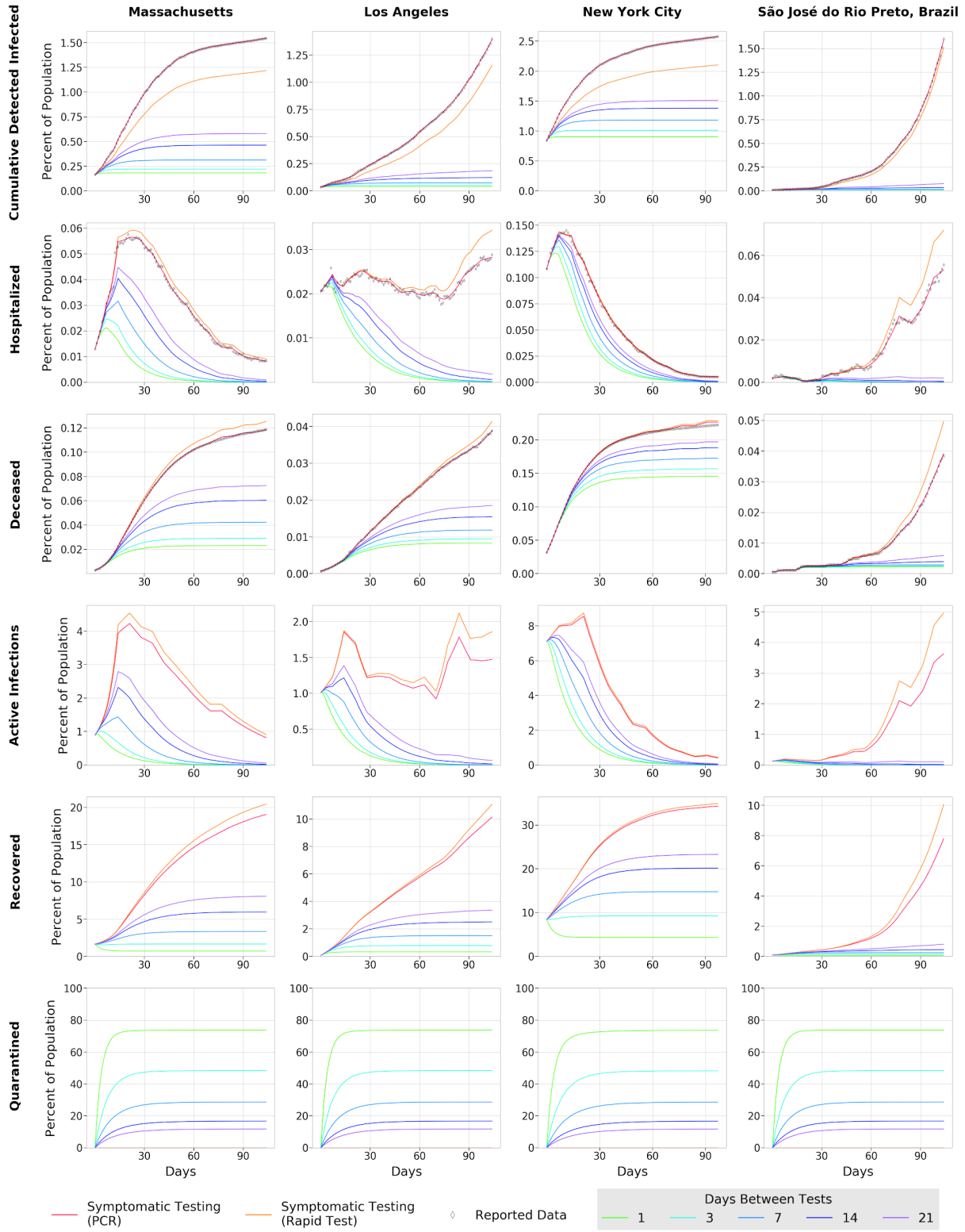


— Symptomatic Testing (PCR)   
 — Symptomatic Testing (Rapid Test)   
 ◇ Reported Data   
 Days Between Tests: 1 (green), 3 (cyan), 7 (blue), 14 (purple), 21 (dark purple)

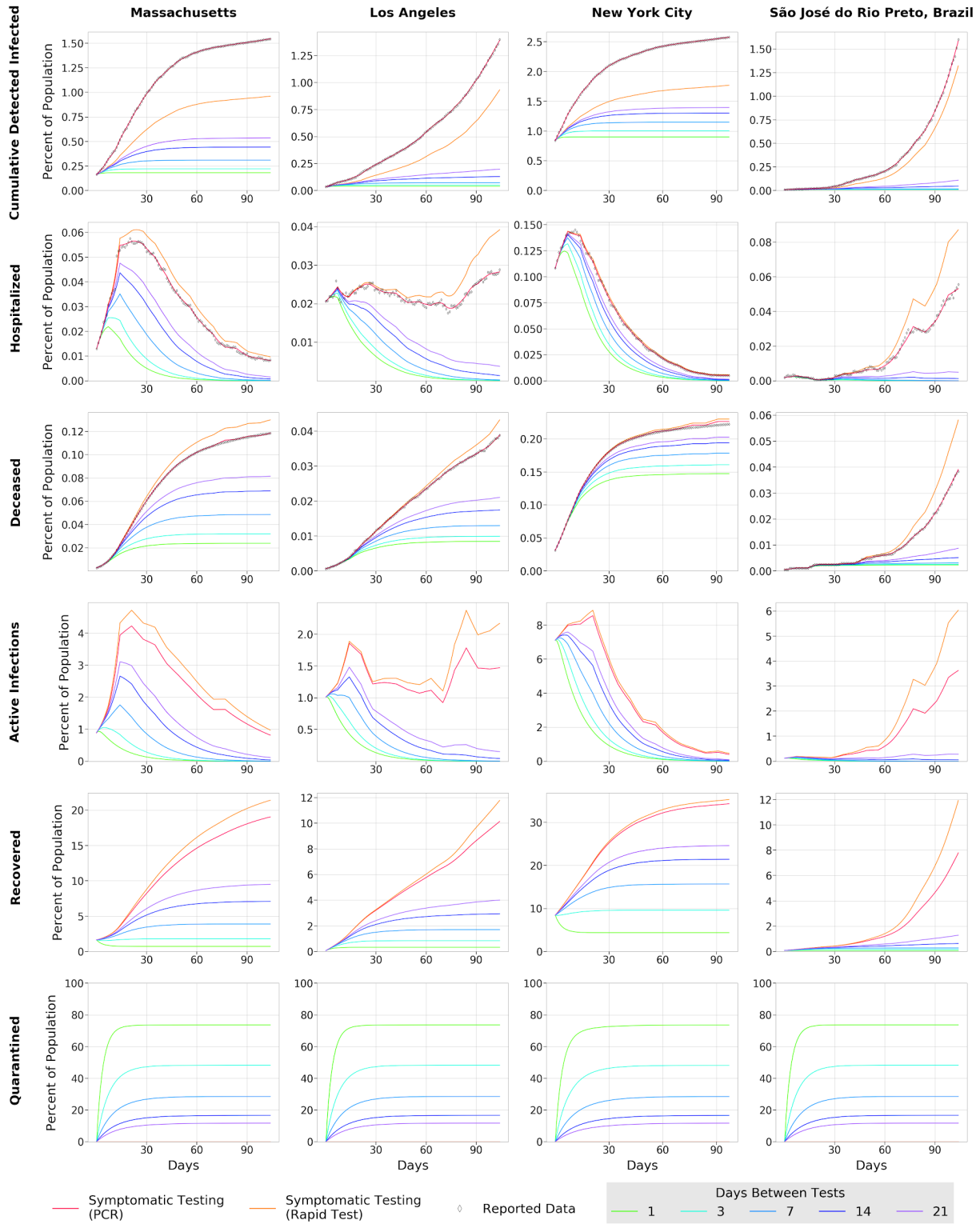
Sensitivity: 30.0% Specificity: 90.0%



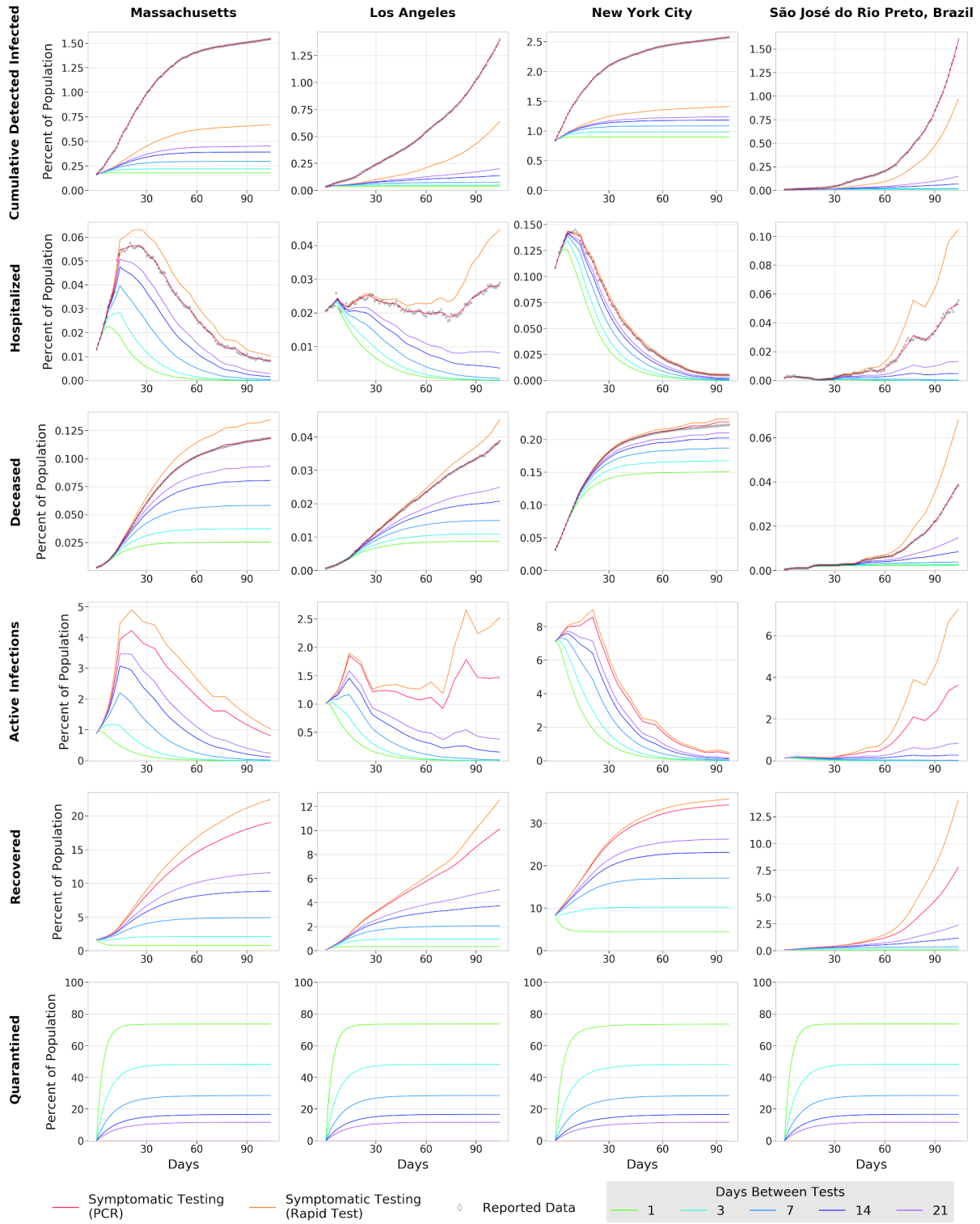
Sensitivity: 90.0% Specificity: 80.0%



Sensitivity: 70.0% Specificity: 80.0%



Sensitivity: 50.0% Specificity: 80.0%



— Symptomatic Testing (PCR)   
 — Symptomatic Testing (Rapid Test)   
 ◊ Reported Data   
 Days Between Tests: 1 (green), 3 (cyan), 7 (blue), 14 (dark blue), 21 (purple)

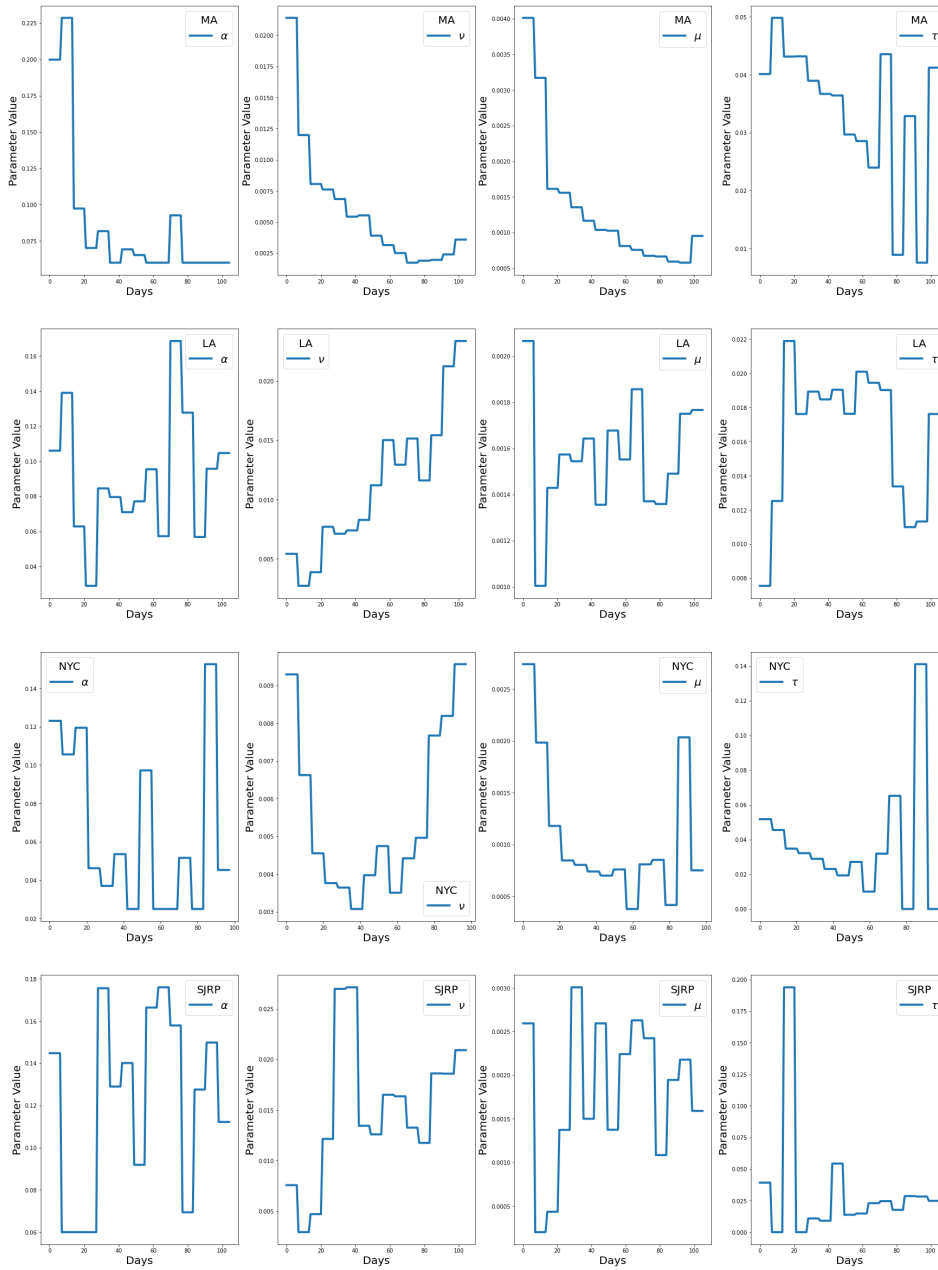
Sensitivity: 30.0% Specificity: 80.0%

**Figure 3 - Figure Supplement 1.** COVID-19 Outcomes as a result of Frequent Rapid Testing Protocol with variable test performances using *SIDHRE-Q* Model. The Cumulative Detected Infected, Hospitalized, Deceased, Active Infections, Recovered, and Quarantined are modeled over 105 days (top to bottom) using reported data from 4 global regions: Massachusetts, Los Angeles, New York City, and São José do Rio Preto in Brazil (left to right). The COVID-19 population spread and outcomes are modeled under a Rapid Testing Protocol with variable testing frequencies ranging from 1-21 days between tests, and variable test performances: 90% specificity with 90% sensitivity (A), 70% sensitivity (B), 50% sensitivity (C), and 30% sensitivity (D); and 80% specificity with 90% sensitivity (E), 70% sensitivity (F), 50% sensitivity (G), and 30% sensitivity (H). This protocol is compared to a symptom-based Rapid Testing protocol and a symptom-based qRT-PCR protocol.

65  
66  
67  
68  
69  
70  
71  
72  
73  
74  
75  
76  
77  
78  
79  
80  
81



82 **Figure 3 - Figure Supplement 2**



83

**Figure 3 - Figure Supplement 2.** Time series of the four fitted parameters  $\alpha$ ,  $\nu$ ,  $\mu$ , and  $\tau$  (left to right) for MA, LA, NYC, and SJRP (top to bottom). See Table 3 in the Methods section for an explanation of the parameters. The values are extracted every seven days from data provided by the respective regions. The parameters vary significantly over time and location. Flat points occur during the seven day windows where the parameters are held constant.

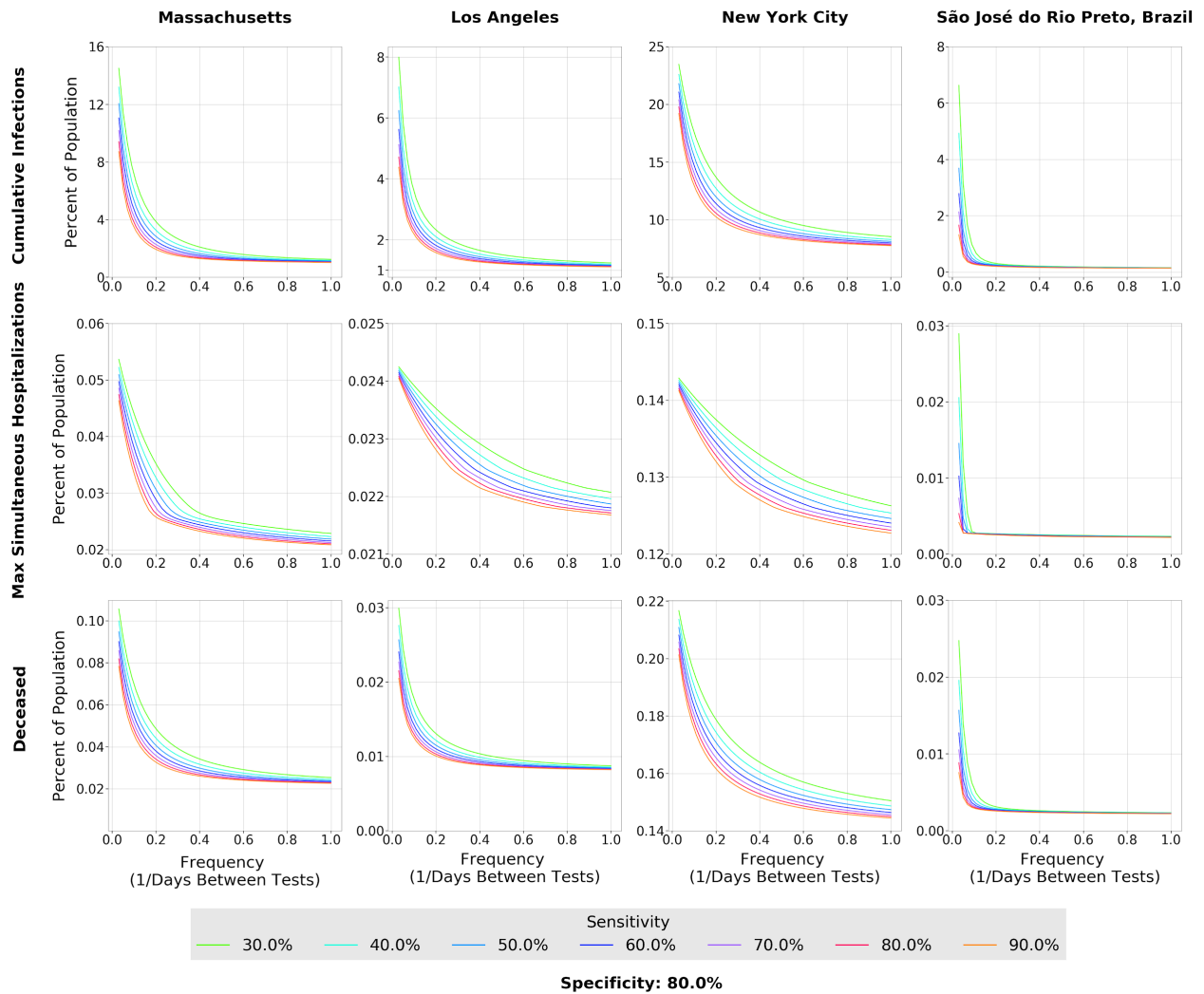
84

The fitting procedure is also outlined in the Methods section

85

86 **Figure 4 - Figure Supplement 1**

87



88

**Figure 4 - Figure Supplement 1.** Effect of Rapid Testing Protocol under variable testing sensitivities and increasing frequency under the *SIDHRE-Q* Model. The Cumulative Infections, Maximum Simultaneously Hospitalized, and Deceased populations are modeled for Massachusetts, Los Angeles, New York City, and São José do Rio Preto in Brazil. The effect of increasing frequency of testing is modeled for various testing sensitivities (30%-90%) with a 80% specificity.

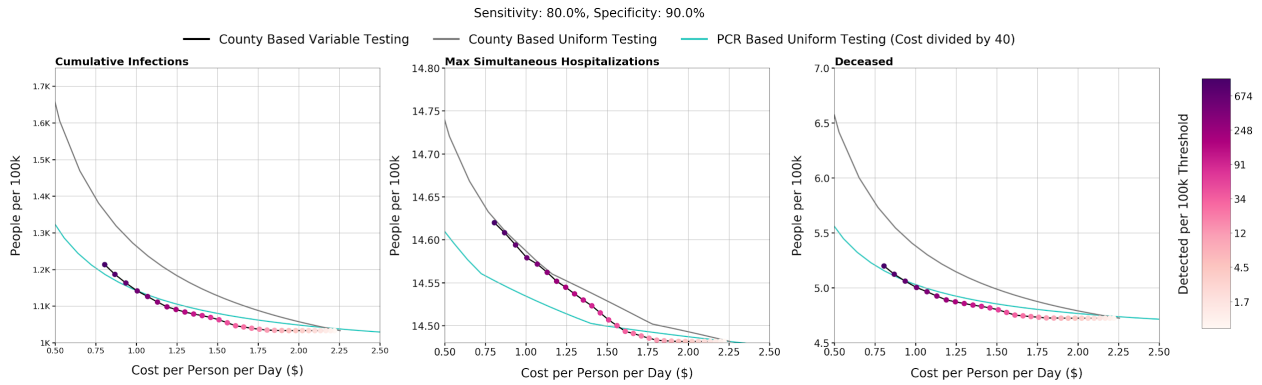
89

90

91

92

93 **Figure 5 - Figure Supplement 2**



94

**Figure 5 - Figure Supplement 1.** Effect of County Based Rapid Testing strategy on COVID-19 outcomes in California. This protocol varies testing frequency in accordance to the number of recorded cases; the threshold for number of active infections which, if reached, signals to commence everyday testing, the highest frequency considered. A Rapid Test with a 80% sensitivity and 90% sensitivity is used in this deployment strategy. Shown is the total cost per person per day versus the cumulative infections, maximum simultaneously hospitalized, and cumulative deaths with varied thresholds for all of CA is shown. The County Based Rapid Testing strategy is compared to uniform testing, which distributes the same number of total tests used in the county strategy, albeit evenly across each county. The effects of uniform testing are modeled for both a Rapid Testing protocol and a qRT-PCR protocol.

95

96

97

98

99

100

101

102

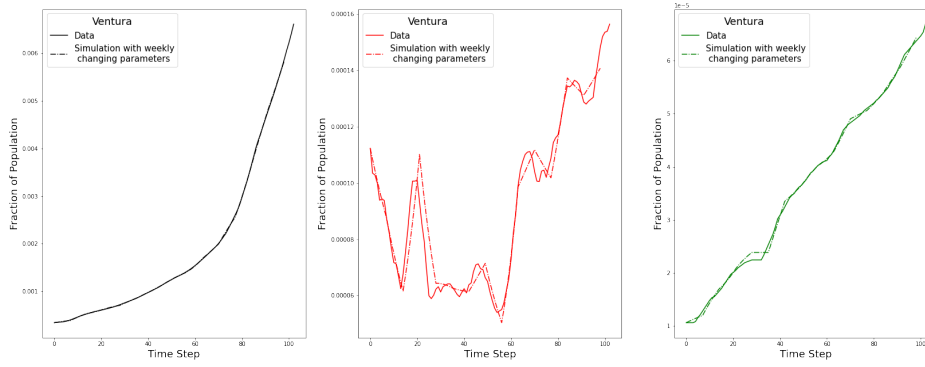
103

104

105

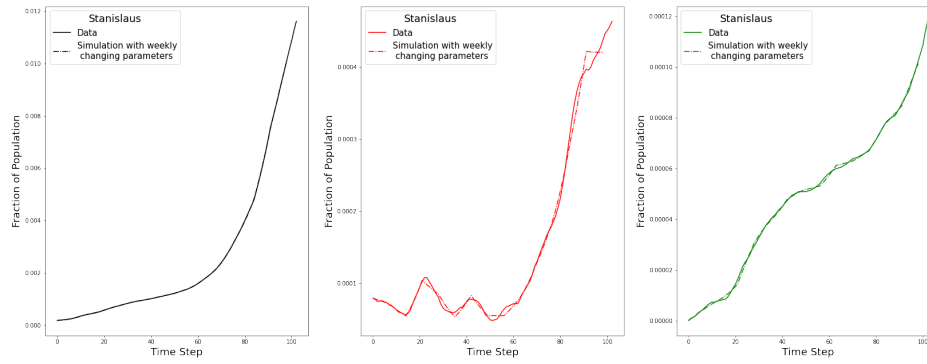
106 **Figure 5 - Figure Supplement 2**

107 **2A**



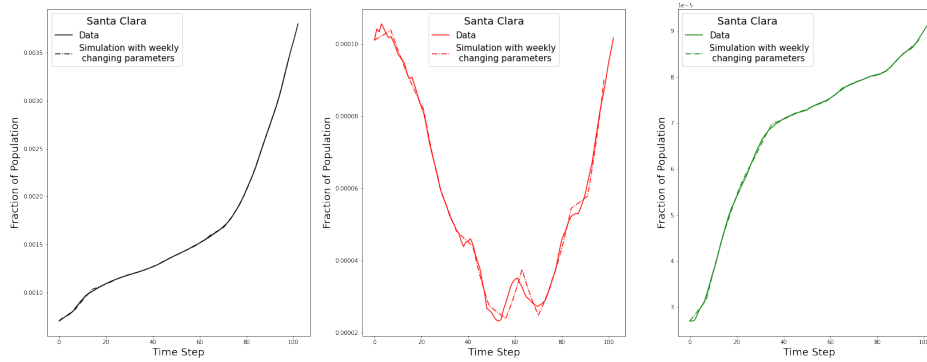
108

109 **2B**



110

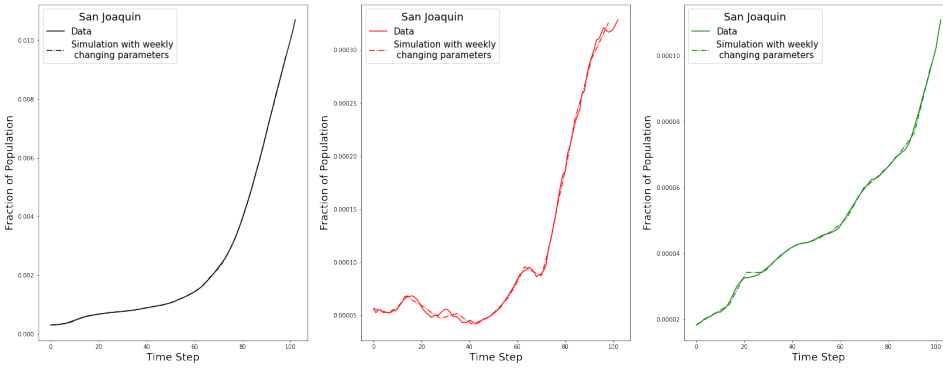
111 **2C**



112

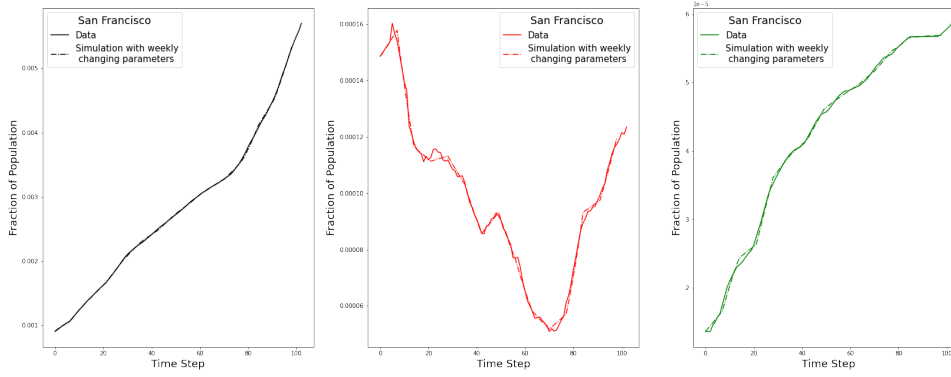
113

114 **2D**



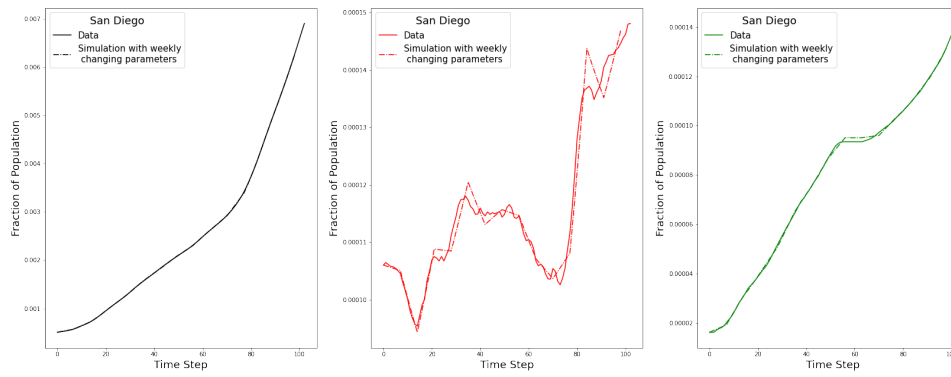
115

116 **2E**



117

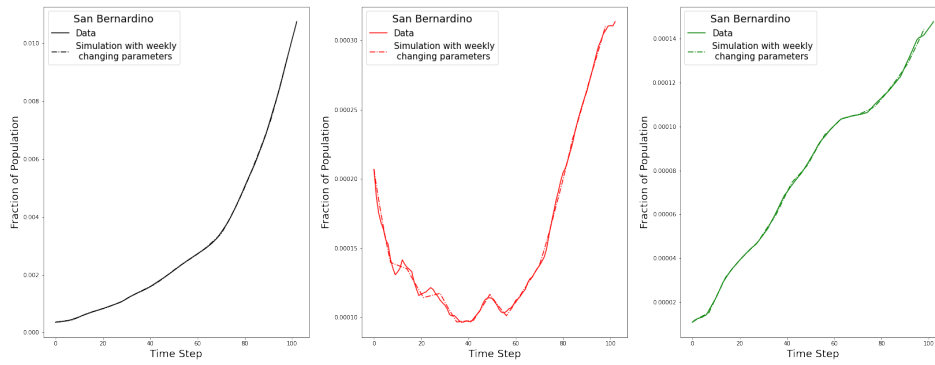
118 **2F**



119

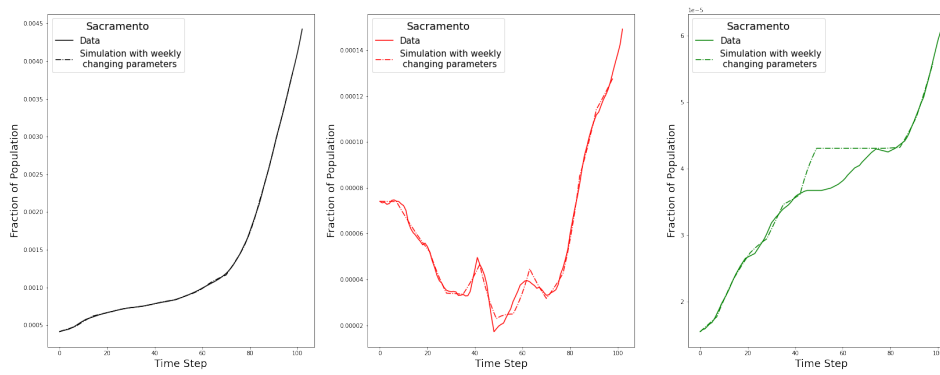
120

121 **2G**



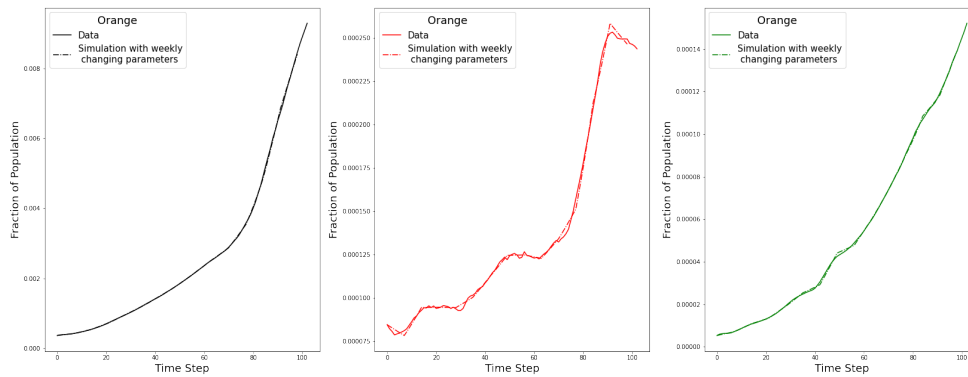
122

123 **2H**



124

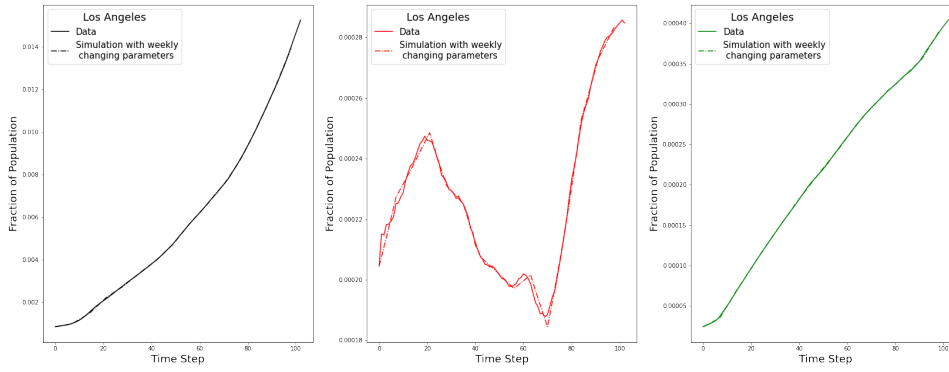
125 **2I**



126

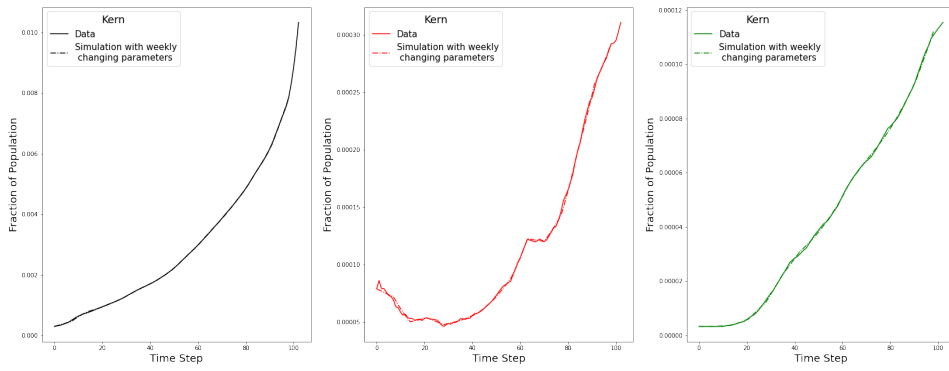
127

128 **2J**



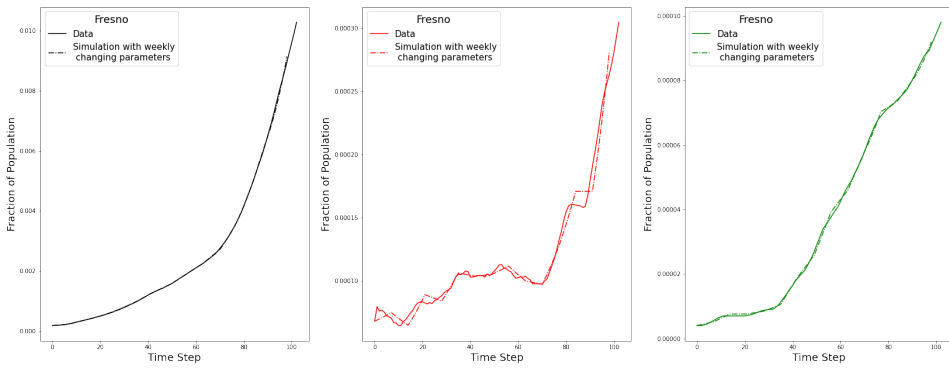
129

130 **2K**



131

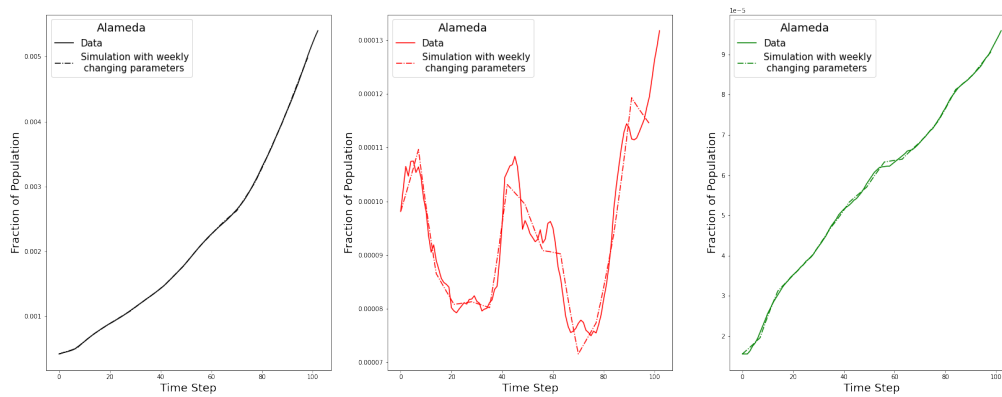
132 **2L**



133

134

135 2M



136

137

**Figure 5 - Figure Supplement 2.** Time series of the three fitted pieces of data Cumulative Cases, Daily Hospitalized, and Cumulative Deaths (left to right) for each county receiving testing in CA; Ventura (2A), Stanislaus (2B), Santa Clara (2C), San Joaquin (2D), San Francisco (2E), San Diego (2F), San Bernardino (2G), Sacramento (2H), Orange (2I), Los Angeles (2J), Kern (2K), Fresno (2L), Alameda (2M). The counties included satisfy two requirements: population greater than 1.5% of the total CA population and nonzero total number of deaths at each point in time. The fitting procedure is outlined in the Methods section.

138