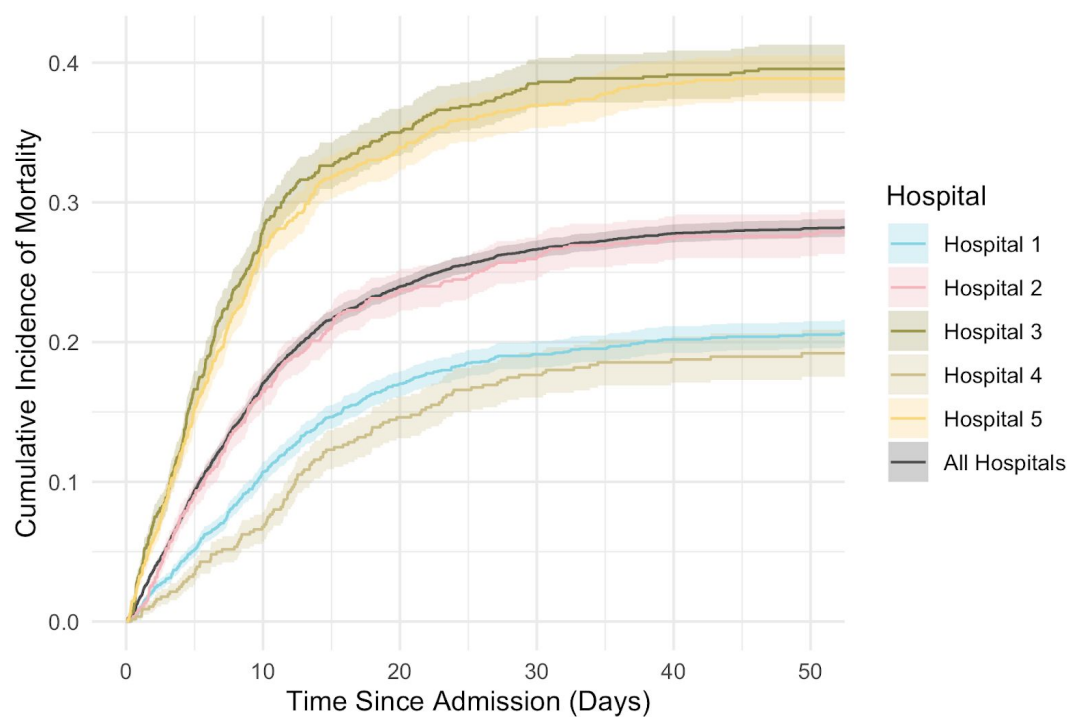


SUPPLEMENTARY MATERIAL

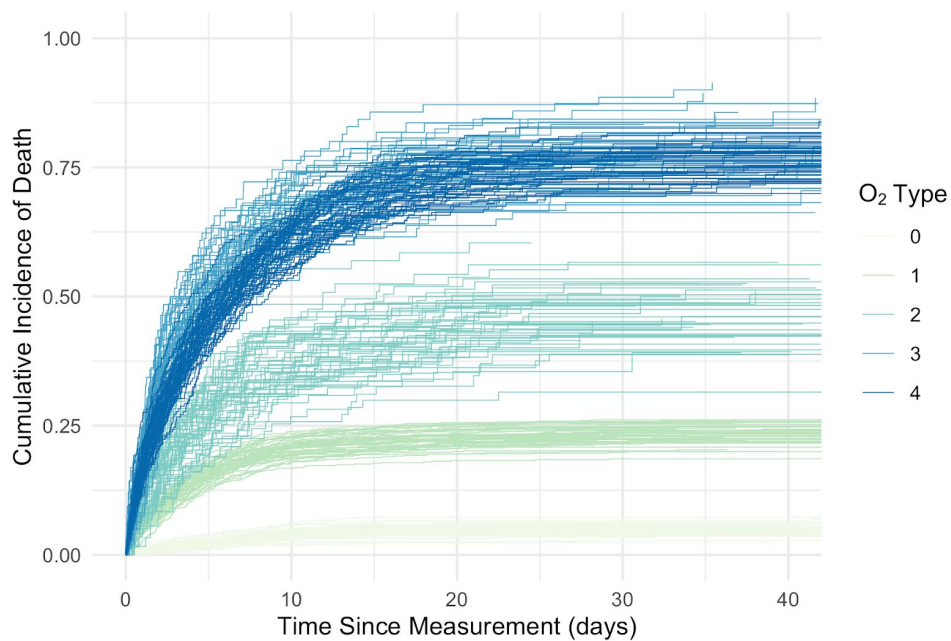
FIGURE S1: Cumulative incidence of mortality and overall outcomes by site of admission. Error bands are one standard deviation above and below the central estimate. The table shows the final dispositions of all patients in the study population at the end of the study, by site of admission.



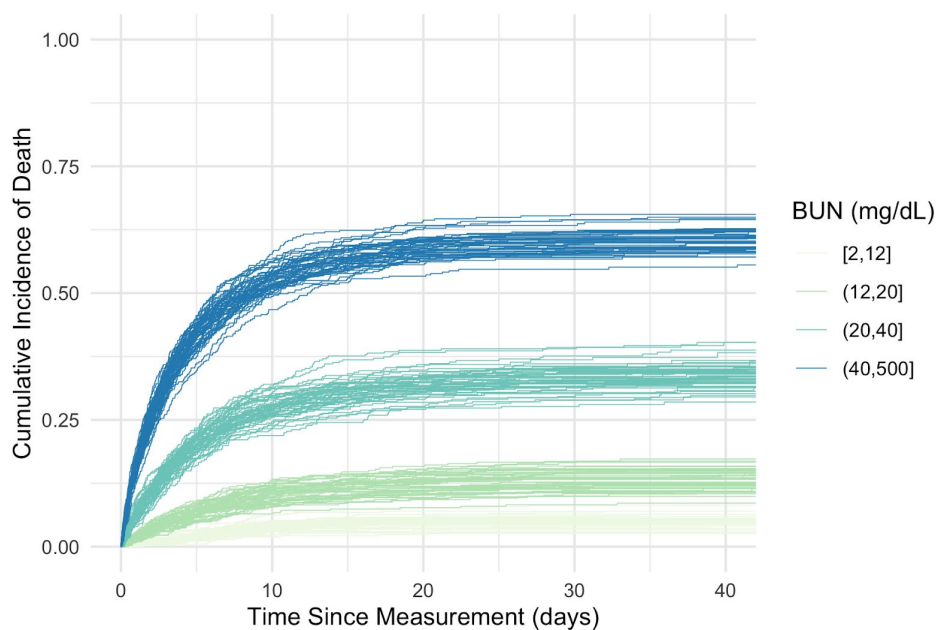
Hospital	Expired	Discharge Home/Eloped	Discharge to Facility	Censored	Total
Hospital 1	363 (20.6%)	1118 (63.4%)	239 (13.6%)	42 (2.4%)	1762
Hospital 2	228 (27.8%)	373 (45.4%)	210 (25.6%)	10 (1.2%)	821
Hospital 3	316 (39.5%)	314 (39.3%)	161 (20.1%)	9 (1.1%)	800
Hospital 4	107 (19.1%)	338 (60.2%)	105 (18.7%)	11 (2.0%)	561
Hospital 5	348 (38.8%)	329 (36.7%)	202 (22.6%)	17 (1.9%)	896

FIGURE S2: Examples of variables leading to satisfactory cumulative incidence splits. The following variables led to good separation by cumulative incidence of mortality, and all were considered for the final score.

(a) Oxygen delivery: 0 = room air, 1 = low-flow, 2 = high-flow, 3 = CPAP/BiPAP, 4 = IMV



(b) Blood urea nitrogen (BUN)



(c) Glasgow Coma Score (integer range: 0-15)

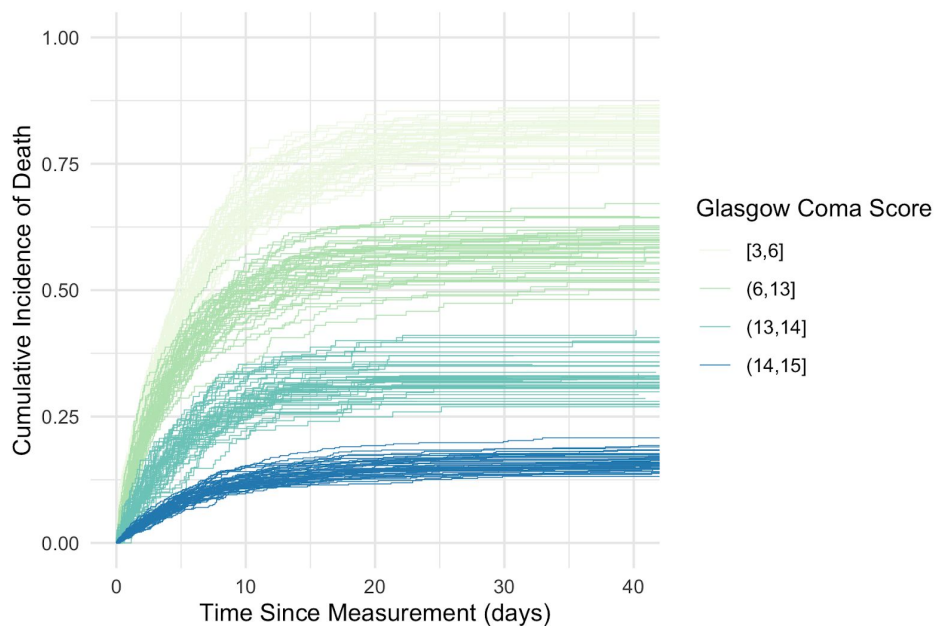
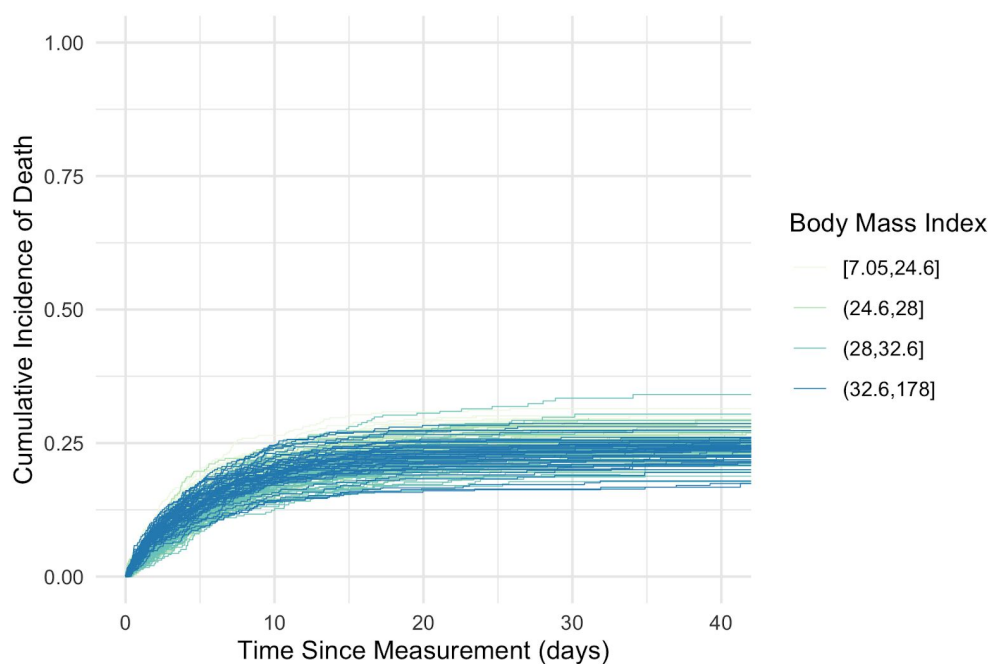
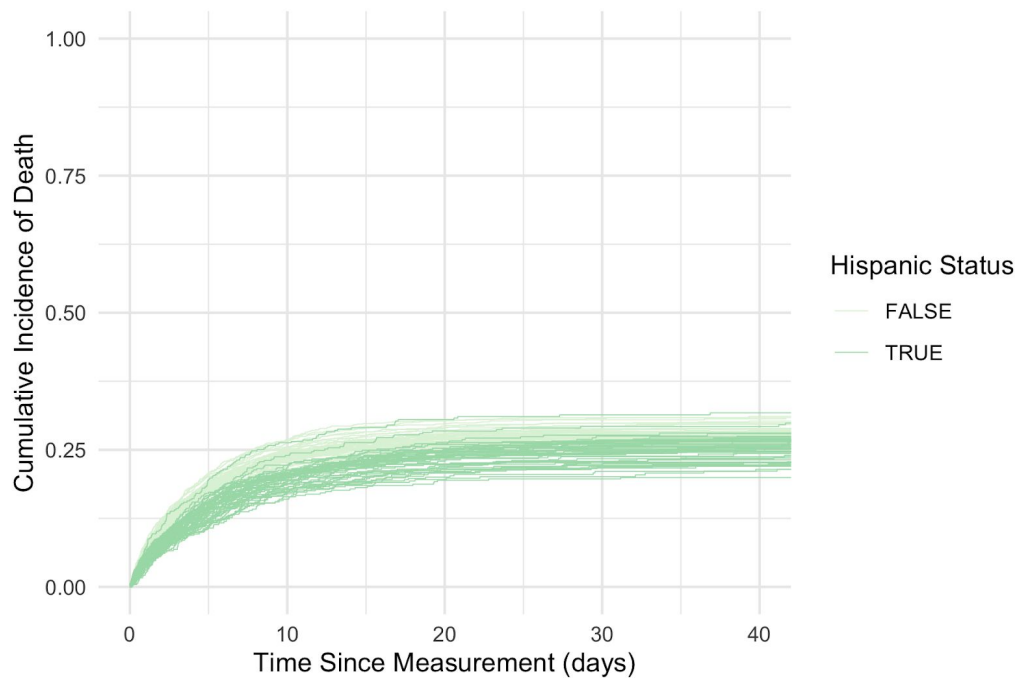


FIGURE S3: Examples of variables leading to poor cumulative incidence splits. Splitting by the following variables led to unsatisfactory separation of cumulative incidence of mortality, and none were considered for the final score.

(a) Body Mass Index (BMI)



(b) Hispanic status



(c) Hemoglobin (g/dL)

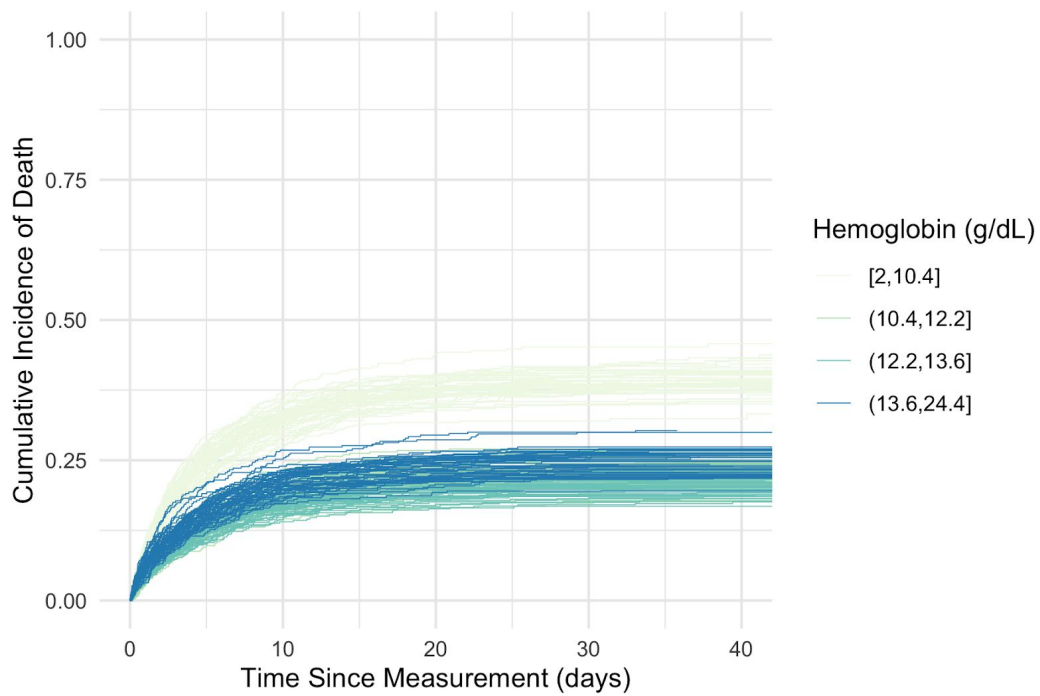


TABLE S1: Comparison of Datasets 1-3. For continuous characteristics, p-values were generated using the nonparametric Kruskal-Wallis test. For categorical/binary characteristics, p-values were generated using chi-squared tests.

Characteristic	Dataset 1 (n=1613)	Dataset 2 (n=1613)	Dataset 3 (n=1614)	p-value
Age (years) – median (IQR)	66.0 (55.2, 78.2)	66.7 (54.3, 77.1)	66.7 (55.4, 77.5)	0.646
Sex – No. (%)				0.116
- Male	886	943	904	
- Female	727	670	710	
Race – No. (%)				0.408
- White	393	397	400	
- Black	441	433	468	
- Asian/Pacific Islander	70	94	74	
- Other	664	634	621	
- Unknown	45	55	51	
Ethnicity – No. (%)				0.776
- Hispanic	459	440	446	
- Non-Hispanic	947	969	945	
- Unknown	207	204	223	
Hospital of Admission				0.066
- Hospital 1 (quaternary care facility)	635	573	554	
- Hospital 2 (community hospital)	269	286	266	
- Hospital 3 (community hospital)	238	264	298	
- Hospital 4 (tertiary care facility)	179	187	195	
- Hospital 5 (community hospital)	292	303	301	
Insurance Status				0.312
- Medicaid	267	247	237	
- Medicare	661	625	662	
- Private	356	354	379	
- Self-Pay	33	36	40	
- Other	126	143	123	
- Unknown	170	208	173	
Comorbidities – No. (%)				
- Hypertension	749	731	752	0.731

- Cardiovascular diseases	717	700	714	0.816
- Coronary artery disease	288	253	280	0.229
- Heart failure	230	231	243	0.775
- Chronic lung diseases	712	718	677	0.283
- Asthma	131	142	146	0.626
- COPD/Emphysema	111	105	99	0.690
- Diabetes mellitus type 2	506	492	515	0.685
- Chronic kidney disease	278	271	290	0.676
- Bleeding or clotting disorder	230	227	249	0.498
- Cerebrovascular disease	204	160	168	0.031
- Cancer	171	173	166	0.916
- Liver disease	74	85	80	0.670
- Pregnancy	49	57	50	0.685
- Prior transplant	42	45	42	0.930
- Human immunodeficiency virus (HIV)	32	29	38	0.524
Smoking status – No. (%)				0.767
- Current	71	73	70	
- Former	338	345	352	
- Never	856	846	878	
- Unknown	348	349	314	
Baseline vitals – Median (IQR)				
- Body mass index (BMI)	28.1 (24.7, 32.6)	28.2 (24.4, 33.0)	27.8 (24.6, 32.6)	0.768
- Diastolic blood pressure (mmHg)	73 (65, 82)	74 (65, 82)	73 (65, 82)	0.822
- Systolic blood pressure (mmHg)	128 (114, 144)	129 (115, 144)	128 (114, 144)	0.896
- Glasgow coma score	15 (12, 15)	15 (13, 15)	15 (12, 15)	0.007
- Mean arterial pressure (MAP)	91 (81, 100)	90 (81, 99)	89 (80, 99)	0.069
- Oxygen saturation (%)	95 (92, 98)	95 (92, 98)	95 (92, 98)	0.532
- Heart rate (bpm)	95 (83, 109)	95.5 (83, 109)	94 (82, 107)	0.192
- Respiratory rate	20 (18, 22)	20 (18, 22)	20 (18, 22)	0.088
- Temperature (°F)	98.6 (98.0, 99.9)	98.6 (98.0, 99.9)	98.6 (98.0, 99.9)	0.929
Baseline laboratory values – Median (IQR)				

- Albumin (g/dL)	3.2 (2.8, 3.5)	3.1 (2.8, 3.5)	3.2 (2.8, 3.6)	0.113
- Bilirubin (mg/dL)	0.60 (0.40, 0.80)	0.60 (0.40, 0.80)	0.60 (0.40, 0.80)	0.097
- Blood urea nitrogen (mg/dL)	19.0 (12.0, 34.0)	19.0 (12.0, 35.0)	19.0 (12.0, 37.0)	0.288
- Creatinine (mg/dL)	1.04 (0.80, 1.60)	1.02 (0.80, 1.61)	1.05 (0.80, 1.71)	0.108
- C reactive protein (mg/L)	114.4 (55.4, 200.1)	118.6 (57.2, 206.1)	115.7 (56.3, 204.4)	0.714
- D-Dimer ($\mu\text{g/mL}$)	1.7 (0.9, 3.5)	1.6 (0.9, 3.6)	1.8 (0.9, 3.5)	0.457
- Estimated glomerular filtration rate (EGFR)	60 (37,60)	60 (37, 60)	60 (35, 60)	0.100
- Ferritin (ng/mL)	729 (335, 1730)	773 (353, 1931)	738 (333, 1722)	0.292
- Hemoglobin (g/dL)	13.2 (11.7, 14.6)	13.3 (11.7, 14.5)	13.1 (11.6, 14.6)	0.830
- Interleukin-6 (IL6; pg/mL)	72.3 (34.5, 135.9)	69.1 (32.8, 147.6)	70.8 (34.6, 147.8)	0.918
- Lactic acid dehydrogenase (LDH; U/L)	426 (318, 574)	431 (324, 584)	426 (316, 590)	0.830
- Lymphocyte percentage (%)	12.3 (7.7, 18.9)	11.9 (7.8, 18.0)	12.1 (7.8, 18.8)	0.631
- PaO ₂ (arterial; mmHg)	87.0 (64.0, 134.4)	87.8 (63.6, 130.5)	87.0 (64.0, 131.2)	0.832
- Platelets ($\times 10^3/\mu\text{L}$)	213 (158, 276)	209 (161, 279)	213 (160, 282)	0.680
- Procalcitonin (ng/mL)	0.20 (0.08, 0.68)	0.20 (0.08, 0.61)	0.19 (0.08, 0.66)	0.866
- Troponin (ng/mL)	0.02 (0.01, 0.07)	0.02 (0.01, 0.06)	0.02 (0.01, 0.07)	0.074
- White blood cell count ($\times 10^3/\mu\text{L}$)	7.7 (5.6, 10.7)	7.5 (5.6, 10.6)	7.7 (5.7, 10.7)	0.493
Baseline risk scores – Median (IQR)				
- SOFA	1 (0, 3)	1 (0, 3)	1 (0, 4)	0.240
- qSOFA	0 (0, 1)	0 (0, 1)	0 (0, 1)	0.974
- CURB-65	1 (0, 2)	1 (0, 2)	1 (1, 2)	0.463
Baseline oxygen requirement				
- Room air	690	660	679	0.215
- Low flow / non-rebreather	738	776	734	

- High flow O2	14	29	31	
- Non-invasive ventilation (NIV) (e.g. CPAP/BiPAP)	66	68	66	
- Invasive mechanical ventilation (IMV)	84	68	66	
- NA / No record	21	12	28	