

Appendix

COVID-19 infection dynamics in care homes in the East of England: a retrospective genomic epidemiology study

William L. Hamilton^{*1,2,+}, Gerry Tonkin-Hill^{*3}, Emily Smith⁴, Charlotte J. Houldcroft⁵, Ben Warne^{1,2}, Luke W. Meredith⁵, Myra Hosmillo⁵, Aminu S. Jahun⁵, Martin D. Curran⁵, Surendra Parmar⁵, Laura G. Caller^{5,6}, Sarah L. Caddy⁵, Fahad A. Khokhar¹, Anna Yakovleva⁵, Grant Hall⁵, Theresa Feltwell⁵, Malte L. Pinckert⁵, Iliana Georgana⁵, Yasmin Chaudhry⁵, Nicholas M. Brown^{7,2}, Sónia Gonçalves³, Roberto Amato³, Ewan M. Harrison³, Mathew A. Beale³, Michael Spencer Chapman^{3,8}, David K. Jackson³, Ian Johnston³, Alex Alderton³, John Sillitoe³, Cordelia Langford³, Gordon Dougan¹, Sharon J. Peacock¹, Dominic P. Kwiatkowski³, Ian Goodfellow⁵, M. Estée Török^{1,2,+}, COVID-19 Genomics Consortium UK⁹

* contributed equally

+ Corresponding authors

Affiliations

1. University of Cambridge, Department of Medicine, Cambridge, UK
2. Cambridge University Hospitals NHS Foundation Trust, Departments of Infectious Diseases and Microbiology, Cambridge UK
3. Wellcome Sanger Institute, Hinxton, UK
4. Cambridgeshire County Council, UK
5. University of Cambridge, Department of Pathology, Division of Virology, Cambridge, UK
6. The Francis Crick Institute, London, UK
7. Public Health England Clinical Microbiology and Public Health Laboratory, Cambridge UK
8. Department of Haematology, Hammersmith Hospital, Imperial College Healthcare NHS Trust, London, UK
9. www.cogconsortium.uk

Correspondence

William Hamilton will.l.hamilton@gmail.com

M. Estée Török et317@cam.ac.uk

1	Table of Contents	
2	Supplementary Methods	4
3	Diagnostic testing, metadata collection and genome sequencing	4
4	Sample selection	4
5	Identifying care home residents	5
6	<i>Step 1: Search terms in patient address fields</i>	5
7	<i>Step 2: Matching location names to CQC registered care facilities</i>	5
8	<i>Step 3: Manual inspection and data clean up</i>	6
9	<i>Step 4: Linking care home addresses to CQC registered care homes</i>	7
10	Linking care home data to CUH acute medical testing data	7
11	Selecting randomised sample of non-care home residents as comparison group	8
12	Care home viral phylogenetics and cluster analysis	9
13	Lineage assignment	10
14	Clustering	10
15	CUH HCW-Care home resident cluster analysis	10
16	Literature cited in supplementary methods	11
17	UK care home testing policy timeline	15
18	Flow diagram for identifying care homes from Cambridge-COGUK metadata	16
19	Breakdown of main organisations submitting samples to Cambridge PHE Laboratory over	
20	study period	17
21	Breakdown of main organisations submitting samples to Cambridge PHE Laboratory over	
22	study period per week	19
23	Care home locations by county, showing nursing and residential homes	20
24	Distribution of cases per care home for nursing and residential homes	21
25	Case numbers in residential and nursing homes	22
26	Positive cases per week per care home	23
27	Proportion of weekly positives from care home residents	24
28	Case numbers from care homes and non-care home residents per week	25
29	Case numbers tested at CUH by infection type	26
30	Care home residents per week showing genome sequencing site	27
31	Distribution of pairwise SNP differences between care home samples	28
32	Viral lineage composition in care home patients by week	29
33	Viral lineage composition in sub-sample of non care home patients by week	30
34	Histogram of pairwise transmission probabilities between care home samples	31
35	Transmission probability threshold vs number of care home clusters	32
36	Pairwise SNP difference distribution within clusters	33

1	<i>Pairwise date difference distribution within clusters.....</i>	34
2	<i>Transmission links identified between two nearby care homes and several healthcare</i>	
3	<i>workers</i>	35
4	<i>Cambridge COG-UK IDs for all samples analysed in this study.....</i>	36
5	<i>COG-UK authors</i>	44
6		
7		

1 **Supplementary Methods**

2 **Diagnostic testing, metadata collection and genome sequencing**

3 For details on diagnostic testing, patient metadata collection and nanopore genome sequencing see
4 (Meredith et al., 2020). Briefly, the Public Health England (PHE) Clinical Microbiology and Public Health
5 Laboratory (CMPHL) in Cambridge used an in-house generated and validated one-step RT q-PCR assay
6 detecting a 222-bp region of the RdRp genes, along with an MS2 bacteriophage internal extraction
7 control, using the Rotorgene™ PCR instrument. Samples that generated a Ct value ≤ 36 were
8 considered positive. Samples from Cambridge University Hospitals NHS Foundation Trust (CUH) and a
9 selection of East of England (EoE) samples were sequenced on site by nanopore to provide rapid
10 information on hospital acquired infections (Meredith et al., 2020). Nanopore sequencing took place
11 in the Division of Virology, Department of Pathology, University of Cambridge, following the
12 ARTICnetwork V3 protocol and assembled using the ARTICnetwork assembly pipeline. The remaining
13 EoE samples, where available, were sent to the Wellcome Sanger Institute (WSI) for sequencing.

14
15 Sequencing at WSI used Illumina technology. cDNA was generated from SARS-CoV-2 viral nucleic acid
16 extracts and subsequently amplified to produce 400nt amplicons tiling the viral genome using V3
17 nCov-2019 primers (ARTIC). This was followed by Illumina library generation using the NEBNext Ultra
18 II DNA Library Prep Kit for Illumina (New England Biolabs Inc, Cat. No. E7645L). Libraries were amplified
19 with KAPA HiFi Ready Mix (Kapa Biosystems, Cat. No. 07958927001) and uniquely indexed with a 100
20 μM i5 and i7 primer mix (50 μM each) (Integrated DNA Technologies) to allow multiplexing of up to
21 384 SARS-CoV-2 viral extracts into one sequencing pool. The PCR products were pooled in equal
22 volume and purified with an AMPure XP workflow (Beckman Coulter, Cat. No. A63880). The purified
23 pool was quantified by qPCR (Illumina Library Quantitation Complete kit, Cat. No. KK4824) and
24 sequenced on one lane of an Illumina NovaSeq SP flow cell (Illumina Inc, NovaSeq 6000 SP Reagent Kit
25 v1.5 (500 cycles), Cat. No. 20028402), with XP workflow (Illumina Inc, NovaSeq XP 2 lane kit v1.5, Cat.
26 No. 20043130). Genomes were generated for each library's sequencing data using bwa mem (Li, 2013)
27 for alignment with MN908947.3 (Wu et al., 2020) as reference, samtools (Li et al., 2009) for pileup and
28 ivar (Grubaugh et al., 2019) for trimming and consensus generation, all orchestrated by the ncov2019-
29 artic-nf pipeline (Bull, 2020).

30 **Sample selection**

31 As described in (Meredith et al., 2020), patient metadata was downloaded daily from the CUH
32 computer system (Epic Systems, Verona, WI, USA) and metadata manipulations were performed in R

1 (v 3.6.2) using the *tidyverse* packages (v 1.3.0) installed on Trust computers. Positive samples were
2 collected and assigned either for sequencing on site by nanopore (focusing on CUH samples and
3 randomised selection of EoE samples), or sent to WSI for Illumina sequencing. Metadata was uploaded
4 weekly to the MRC CLIMB system as part of the COG-UK consortium. Samples included healthcare
5 workers (HCW) tested in the CUH HCW screening programme (Jones et al., 2020; Rivett et al., 2020),
6 all of which were sequenced on site by nanopore.

7 **Identifying care home residents**

8 We identified care home residents using a two-stage data mining approach followed by manual
9 inspection and linking putative care home addresses to care homes registered to the Care Quality
10 Commission (CQC).

11 ***Step 1: Search terms in patient address fields***

12 We searched patient address lines 1 and 2 for the following list of key phrases (not case sensitive) in
13 their electronic healthcare records; if any phrases were present the patient was labelled as being from
14 a care home:

- 15 · "residential home"
- 16 · "care home"
- 17 · "nursing home"
- 18 · "care centre"
- 19 · "care hom"
- 20 · "nursing hom"
- 21 · "residential hom"
- 22 · "carehome"

23 This identified 765 patients as being care home residents.

24 ***Step 2: Matching location names to CQC registered care facilities***

25 Many care homes do not have the above list of phrases in their address names. To capture these
26 facilities we used the publicly available database of care homes registered to the CQC, the
27 independent regulator of health and adult social care in England. All organisations providing
28 accommodation for persons who require nursing or personal care must be registered with the CQC,
29 including care homes with or without nursing care (*What Is Registration? | Care Quality Commission,*
30 n.d.). Details of the CQC registration scope can be found in "The scope of registration (Registration

1 under the Health and Social Care Act 2008)", March 2015, available at this link as of 24th June 2020:
2 (Quality Commission, 2015).
3

4 We accessed the file "CQC care directory – with filters (1 June 2020)" on 23rd June 2020 from the CQC
5 website: (*Using CQC Data | Care Quality Commission, n.d.*), and applied the following filters:

- 6 · Total facilities in CQC database: N = 49,516
- 7 · "Carehome?" column filtered to "Y": N = 15,507*
- 8 · We only included care homes for which "Location Postal Code" column matched at least 1
9 postcode from the dataset of 6,600 patients included in our study, yielding N = 444 care
10 homes. Following manual review and consistifying postcodes with the sample metadata, we
11 used a set of 469 CQC care homes.**

12
13 *Filtering using the "carehome?" column was based on advice given after correspondence with the
14 CQC.

15 ** Requiring CQC registered care homes to match postcodes from the patient dataset minimised the
16 number of "false positives" – patients whose address name matched a CQC registered care home
17 name by coincidence. 25 CQC-registered care homes were added following manual review of the
18 identified putative care home residents, who had a different postcode documented in the electronic
19 healthcare records for the same care home, yielding the final "CQC EoE care home search set" of 469
20 care homes.

21
22 We then used the values from the "Location name" column of the filtered CQC dataset (i.e. the care
23 home facility names) as search phrases for address line 1 in the patient database. Any patients with
24 exactly matching phrases were labelled as care home residents. This increased the number of care
25 home residents identified by a further 382 to 1,147, i.e. around one third of care home residents were
26 identified using CQC facility names and would have been missed by relying on generic care home-
27 related search phrases alone.

28 ***Step 3: Manual inspection and data clean up***

29 Address lines for the non-care home patients were manually inspected; this identified a further 89
30 care home residents. Most of these had not been detected in steps 1 and 2 due to spelling or
31 formatting issues with the patient addresses (e.g. short-hand abbreviations used for care home
32 names, or inclusion of extra details like flat number meaning the string did not match a CQC care home
33 name exactly).

1

2 Next, address lines for the care home residents were manually inspected and 14 were deemed not to
3 be care home residents. Most of these were due to unrelated locations sharing the same address
4 name as a CQC registered care home. The manual filtering steps thus yielded a care home resident
5 count of $1,147 + 89 - 14 = 1,222$. Address line 1 for all 1,222 care home residents was manually
6 inspected and formatted to ensure residents from the same care home had matching terms in this
7 column. This was necessary due to discrepant address entrance formats for identical care homes;
8 without this step, residents from the same care home would be incorrectly assigned to different
9 anonymised care home codes.

10 ***Step 4: Linking care home addresses to CQC registered care homes***

11 First line of patient address and postcodes were matched to care home names and postcodes from
12 the CQC EoE care home search set (described above). Any discrepancies (care homes not matching
13 the CQC data) were manually inspected and in the majority of cases the discrepancy could be
14 reconciled (e.g. alternative name or postcode used for the same care home). In 55 cases a “care home”
15 was reclassified to non-care home, either because the address was independent housing with a
16 matching name to a care home by coincidence, or because a care facility was determined by CQC
17 definitions to not be a care home - e.g. several mental health community hospitals, drug rehabilitation
18 centres, and supported living environments were excluded. Ultimately all 337 care homes included in
19 the study were linked to CQC data; in two cases the care home had been previously registered but
20 had since been “archived”, and the most recent CQC data for defining whether residential or nursing
21 care was being provided was used.

22

23 Care home location IDs assigned by the CQC were turned into anonymised codes (format: CARE
24 followed by an ascending 4-digit numeric code). We determined whether care homes were
25 “residential homes” or “nursing homes” using the CQC data column “Service type - Care home service
26 with nursing” filtered to “Y” for care homes with nursing, and column “Service type - Care home
27 service without nursing” = “Y” for care homes without nursing (“residential homes”). If both fields
28 were “Y” then the care home was coded as being a nursing home.

29 **Linking care home data to CUH acute medical testing data**

30 The dataset of 7,407 PCR-positive samples with metadata were collected prospectively as part of the
31 COG-UK study. Data on CUH acute care testing, including categorisations of whether infections were
32 community or hospital acquired (definitions provided in (Meredith et al., 2020)), were collected

1 separately as part of CUH and national monitoring. In the study period, 464 patients had tested
2 positive for COVID-19 at CUH.

3

4 When merging the metadata collected for COG-UK (including the above care home categorisations)
5 with CUH acute testing data we identified 23 samples that had tested positive in CUH that were not
6 in the COG-UK dataset. 21/23 of these were tested on the SAMBA platform at CUH (Collier et al.,
7 2020), which is not PCR-based and sequencing is currently not possible for these samples due to rapid
8 RNA degradation. For technical reasons SAMBA results were not included in the data collected
9 prospectively in the COG-UK study. The remaining two discrepancies were not captured in our
10 prospective electronic patient record downloads, which likely reflects periods where the download
11 processes and coding methods were in flux. Of the 23 missing samples, none were determined as
12 being community-onset care home associated infections (20 were community-onset community-
13 associated, two were hospital-onset indeterminate healthcare-associated, and one was a healthcare
14 worker). They therefore are not included in the numbers presented on care home resident ICU
15 admission and mortality for CUH patients in Table 1, but are depicted with the above categorisations
16 in the CUH epidemic curve shown in Figure 2.

17 **Selecting randomised sample of non-care home residents as comparison group**

18 We selected a randomised sample of non-care home residents to use as a control group for
19 comparison against the care home resident group. Because this group was intended to be
20 representative of non-care home community-acquired transmission, we applied the following
21 exclusion criteria prior to randomisation:

- 22 • Patient address available
- 23 • Not one of the identified care home residents
- 24 • Not a HCW (information only available for people tested at CUH)
- 25 • Not a CUH case of indeterminate, suspected or definite hospital acquired infection
- 26 • Not living in a long-term care facility other than a care home (e.g. mental health
27 hospital, rehabilitation unit, etc)
- 28 • Not living in a prison

29 We attempted to have a roughly equivalent representation of nanopore and WSI sequenced samples
30 as present in the care home database. Samples were selected using the R randomisation command
31 *sample_n()* from available genomes in the CLIMB database passing QC filters. Having identified 698
32 samples, any cases with matching addresses that had been excluded were added to yield the final set
33 of 700 non-care home genomes for comparison. Of the 700 non-care home samples included, we note

1 that there were five instances of pairs of samples sharing the same address; in all five cases the
2 pairwise SNP difference was zero or 1, and in 4/5 cases the people shared the same surname.

3 **Care home viral phylogenetics and cluster analysis**

4 Consensus fasta sequences were downloaded from the MRC-CLIMB website
5 (<https://www.climb.ac.uk/>) (Connor et al., 2016). Genomes were de-duplicated (1 genome per
6 person) and passed through quality control (QC) filtering using the same criteria as in (Meredith et al.,
7 2020): genome size >29Kb, N count <2990 (i.e. >90% coverage).

8

9 The 700 de-duplicated viral genomes from care home residents passing QC were aligned using MAFFT
10 (v 7.458) (Kato & Standley, 2013) with default settings. Command:

```
11 "/PATH/mafft" --retree 2 --inputorder "multi_fasta_filename.fasta" > "alignment_filename"
```

12

13 A SNP difference matrix was produced from the alignment using *snp-dists* v 0.7.0 (*Tseemann/Snp-*
14 *Dists: Pairwise SNP Distance Matrix from a FASTA Sequence Alignment*, n.d.) installed in a conda
15 environment, run with the following command:

```
16 snp-dists -c alignment_filename.aln > snp_diff_matrix_filename.csv
```

17

18 The SNP difference matrix was manipulated in R using the *Matrix* and *tidyverse* packages to generate
19 the SNP difference histogram and boxplots.

20

21 Phylogenetic trees were generated using IQ-TREE (v 1.6.12 built Aug 15 2019). An alignment was
22 generated as above including a reference genome from Wuhan, China, collected December 2019 and
23 used to root the tree (GISAID ID: EPI_ISL_402123). The IQ-TREE Model Finder Plus option was used
24 (Kalyaanamoorthy et al., 2017) which searches from a database of available nucleotide substitution
25 models and selects the best fit to the analysis, command line:

```
26 ~/PATH/iqtree -s alignment_filename -m MFP
```

27

28 The best-fit nucleotide substitution model according to BIC was GTR+F+R2. The tree in Figure 3 was
29 produced using this model with the ultrafast bootstrap option (Hoang et al., 2018) run through 1,000
30 tree iterations to estimate branch support values, using command:

```
31 ~/PATH/iqtree -s alignment_filename -m GTR+F+R2 -bb 1000
```

32

1 Newick trees were manipulated in *FigTree* (v 1.4.4) to root on the Wuhan sample and put in increasing
2 node order. Trees were visualised initially using the microreact online tool (Argimón et al., 2016), and
3 Figure 3 was produced in R using *ggtree* (v 2.0.4) (Yu et al., 2017).

4 **Lineage assignment**

5 Viral lineages were assigned using the Pangolin COVID-19 Lineage Assigner web utility (*COG-UK*, n.d.).
6 Analysis was performed with Pangolin (Rambaut et al., 2020) version 1.1.14, lineages version 2020-
7 05-19-2. Contextual information about lineages was taken from (*SARS-CoV-2 Lineages*, n.d.), accessed
8 24/07/2020.

9 **Clustering**

10 Clusters were produced using an adaptation of the *transcluster* package (*Gtonkinhill/Fasttranscluster*,
11 n.d.; Stimson et al., 2019), assuming a viral mutation rate of $1e-3$ substitutions/site/year (Fauver et
12 al., 2020) and serial interval of five days (He et al., 2020; Zhang et al., 2020). We used days between
13 first positive sampling date as a proxy for serial interval (which is the date of symptom onset, rather
14 than swab positivity). Where collection date was missing we used the date the sample was received
15 in the Cambridge PHE laboratory. The resulting pairwise transmission probabilities were used to
16 generate a pairwise distance matrix and clustering was performed using single linkage hierarchical
17 clustering with the R *hclust* function. Links were only considered if they involved residents from the
18 same care home.

19
20 We explored the relationship between the probability of infections being linked by ≤ 2 intermediate
21 hosts and the resulting number of care home clusters (Appendix pp 31-32). A higher threshold leads
22 to more care home clusters, with greater likelihood of linked transmission within each cluster than
23 when using a lower threshold. We pragmatically chose a cut-off of 15% probability, yielding the within-
24 cluster SNP and date difference distributions shown in Appendix pp 33-34; the majority of pairwise
25 comparisons within clusters were zero or 1 SNP different and <14 days apart.

26 **CUH HCW-Care home resident cluster analysis**

27 To investigate transmission between healthcare workers (HCW) and care home residents we focused
28 on CUH cases, where we had richest metadata including HCW status.

29

30 Of 6,600 PCR-positive patients, 91 had been identified as HCW. 74 of these were from the CUH HCW
31 screening programme (which includes symptomatic, asymptomatic and household contact arms)

1 (Jones et al., 2020; Rivett et al., 2020) and 17 had presented acutely to CUH medical services, and been
2 identified as HCW during their initial medical clerking and subsequent note reviews. Of the 91 HCW,
3 76 had genomes available for analysis (breakdown: 56 samples identified through the CUH HCW
4 screening programme, 9 CUH HCW who presented to acute medical services at CUH, and 11 HCW
5 from community settings (paramedics and care home workers) that had been flagged as HCW through
6 admission clerkings). Of 464 CUH cases in the study period, 71 were care home residents and 54 of
7 these had available genomes for analysis. The total combined analysis set of CUH HCW and care home
8 residents was therefore $76+54 = 130$.

9

10 The 130 genomes were aligned using MAFFT and underwent the same cluster analysis using the
11 *transcluster* algorithm as described above. We focused on clusters containing at least one of both a
12 HCW and a care home resident. Transmission links between care homes were excluded as were links
13 between HCWs. We allowed for HCWs to belong to multiple clusters from different care homes to
14 allow for the possibility of a HCW seeding multiple care home infections. We identified 21 clusters
15 involving both care home residents and HCWs. Of the 54 care home residents, 38 had links with HCWs
16 within the 0.15 probability threshold. Medical notes for potential care home resident-HCW
17 transmission pairs were reviewed by author WLH as described in (Meredith et al., 2020), with cases
18 being categorised as strongly linked epidemiologically (e.g. the HCW documented in the care home
19 residents' medical notes); possibly linked (e.g. both working in the hospital at the same time but not
20 in the same wards); or no evidence of an epidemiological link.

21 **Literature cited in supplementary methods**

22 Argimón, S., Abudahab, K., Goater, R. J. E., Fedosejev, A., Bhai, J., Glasner, C., Feil, E. J., Holden, M. T.
23 G., Yeats, C. A., Grundmann, H., Spratt, B. G., & Aanensen, D. M. (2016). Microreact: visualizing
24 and sharing data for genomic epidemiology and phylogeography. *Microbial Genomics*, 2(11),
25 e000093. <https://doi.org/10.1099/mgen.0.000093>

26 Bull, M. (2020). *A Nextflow pipeline for running the ARTIC network's fieldbioinformatics tools with a*
27 *focus on ncov2019*. <https://github.com/connor-lab/ncov2019-artic-nf>

28 *COG-UK*. (n.d.). Retrieved July 30, 2020, from <https://pangolin.cog-uk.io/>

29 Collier, D., Assennato, S., Sithole, N., Sharrocks, K., Ritchie, A., Ravji, P., Routledge, M., Sparkes, D.,
30 Skittrall, J., Warne, B., smielewska, A., RAMSEY, I., Goel, N., CURRAN, M., ENOCH, D., TASSELL,
31 R., LINEHAM, M., VAGHELA, D., LEONG, C., & Gupta, R. (2020). Rapid point of care nucleic acid
32 testing for SARS-CoV-2 in hospitalised patients: a clinical trial and implementation study. *Cell*

1 *Reports Medicine*, 100062. <https://doi.org/10.1101/2020.05.31.20114520>

2 Connor, T. R., Loman, N. J., Thompson, S., Smith, A., Southgate, J., Poplawski, R., Bull, M. J.,
3 Richardson, E., Ismail, M., Thompson, S. E., Kitchen, C., Guest, M., Bakke, M., Sheppard, S. K., &
4 Pallen, M. J. (2016). CLIMB (the Cloud Infrastructure for Microbial Bioinformatics): an online
5 resource for the medical microbiology community. *Microbial Genomics*, 2(9), e000086.
6 <https://doi.org/10.1099/mgen.0.000086>

7 *Coronavirus testing - GOV.UK*. (n.d.). Retrieved July 30, 2020, from
8 <https://www.gov.uk/government/news/coronavirus-testing>

9 *COVID-19 policy tracker | The Health Foundation*. (n.d.). Retrieved July 30, 2020, from
10 [https://www.health.org.uk/news-and-comment/charts-and-infographics/covid-19-policy-](https://www.health.org.uk/news-and-comment/charts-and-infographics/covid-19-policy-tracker)
11 tracker

12 Fauver, J. R., Petrone, M. E., Hodcroft, E. B., Shioda, K., Ehrlich, H. Y., Watts, A. G., Vogels, C. B. F.,
13 Brito, A. F., Alpert, T., Muyombwe, A., Razeq, J., Downing, R., Cheemarla, N. R., Wyllie, A. L.,
14 Kalinich, C. C., Ott, I. M., Quick, J., Loman, N. J., Neugebauer, K. M., ... Grubaugh, N. D. (2020).
15 Coast-to-Coast Spread of SARS-CoV-2 during the Early Epidemic in the United States. *Cell*,
16 181(5), 990–996. <https://doi.org/10.1016/j.cell.2020.04.021>

17 Grubaugh, N. D., Gangavarapu, K., Quick, J., Matteson, N. L., De Jesus, J. G., Main, B. J., Tan, A. L.,
18 Paul, L. M., Brackney, D. E., Grewal, S., Gurfield, N., Van Rompay, K. K. A., Isern, S., Michael, S.
19 F., Coffey, L. L., Loman, N. J., & Andersen, K. G. (2019). An amplicon-based sequencing
20 framework for accurately measuring intrahost virus diversity using PrimalSeq and iVar. *Genome*
21 *Biology*, 20(1), 1–19. <https://doi.org/10.1186/s13059-018-1618-7>

22 *gtonkinhill/fasttranscluster*. (n.d.). Retrieved July 30, 2020, from
23 <https://github.com/gtonkinhill/fasttranscluster>

24 He, X., Lau, E. H. Y., Wu, P., Deng, X., Wang, J., Hao, X., Lau, Y. C., Wong, J. Y., Guan, Y., Tan, X., Mo,
25 X., Chen, Y., Liao, B., Chen, W., Hu, F., Zhang, Q., Zhong, M., Wu, Y., Zhao, L., ... Leung, G. M.
26 (2020). Temporal dynamics in viral shedding and transmissibility of COVID-19. *Nature Medicine*,
27 26(5), 672–675. <https://doi.org/10.1038/s41591-020-0869-5>

28 Hoang, D. T., Chernomor, O., von Haeseler, A., Minh, B. Q., & Vinh, L. S. (2018). UFBoot2: Improving
29 the Ultrafast Bootstrap Approximation. *Molecular biology and evolution*. *Molecular Biology and*
30 *Evolution*, 35(2), 518–522. <https://doi.org/10.5281/zenodo.854445>

1 Jones, N. K., Rivett, L., Sparkes, D., Forrest, S., Sridhar, S., Young, J., Pereira-Dias, J., Cormie, C., Gill,
2 H., Reynolds, N., Wantoch, M., Routledge, M., Warne, B., Levy, J., Jiménez, W. D. C., Samad, F.
3 N. B., McNicholas, C., Ferris, M., Gray, J., ... Weekes, M. P. (2020). Effective control of sars-cov-2
4 transmission between healthcare workers during a period of diminished community prevalence
5 of covid-19. *ELife*, *9*, 1–10. <https://doi.org/10.7554/eLife.59391>

6 Kalyaanamoorthy, S., Minh, B. Q., Wong, T. K. F., Von Haeseler, A., & Jermiin, L. S. (2017).
7 ModelFinder: Fast model selection for accurate phylogenetic estimates. *Nature Methods*, *14*(6),
8 587–589. <https://doi.org/10.1038/nmeth.4285>

9 Katoh, K., & Standley, D. M. (2013). MAFFT multiple sequence alignment software version 7:
10 Improvements in performance and usability. *Molecular Biology and Evolution*, *30*(4), 772–780.
11 <https://doi.org/10.1093/molbev/mst010>

12 Li, H. (2013). *Aligning sequence reads, clone sequences and assembly contigs with BWA-MEM*.
13 *00*(00), 1–3. <http://arxiv.org/abs/1303.3997>

14 Li, H., Handsaker, B., Wysoker, A., Fennell, T., Ruan, J., Homer, N., Marth, G., Abecasis, G., & Durbin,
15 R. (2009). The Sequence Alignment/Map format and SAMtools. *Bioinformatics*, *25*(16), 2078–
16 2079. <https://doi.org/10.1093/bioinformatics/btp352>

17 Meredith, L. W., Hamilton, W. L., Warne, B., Houldcroft, C. J., Hosmillo, M., Jahun, A. S., Curran, M.
18 D., Parmar, S., Caller, L. G., Caddy, S. L., Khokhar, F. A., Yakovleva, A., Hall, G., Feltwell, T.,
19 Forrest, S., Sridhar, S., Weekes, M. P., Baker, S., Brown, N., ... Goodfellow, I. (2020). Rapid
20 implementation of SARS-CoV-2 sequencing to investigate cases of health-care associated
21 COVID-19: a prospective genomic surveillance study. *The Lancet Infectious Diseases*, *0*(0).
22 [https://doi.org/10.1016/S1473-3099\(20\)30562-4](https://doi.org/10.1016/S1473-3099(20)30562-4)

23 Quality Commission, C. (2015). *The scope of registration*.

24 Rambaut, A., Holmes, E. C., O’Toole, Á., Hill, V., McCrone, J. T., Ruis, C., du Plessis, L., & Pybus, O. G.
25 (2020). A dynamic nomenclature proposal for SARS-CoV-2 lineages to assist genomic
26 epidemiology. *Nature Microbiology*. <https://doi.org/10.1038/s41564-020-0770-5>

27 Rivett, L., Sridhar, S., Sparkes, D., Routledge, M., Jones, N. K., Forrest, S., Young, J., Pereira-Dias, J.,
28 Hamilton, W. L., Ferris, M., Torok, M. E., Meredith, L., Curran, M., Fuller, S., Chaudhry, A., Shaw,
29 A., Samworth, R. J., Bradley, J. R., Dougan, G., ... Weekes, M. P. (2020). Screening of healthcare
30 workers for SARS-CoV-2 highlights the role of asymptomatic carriage in COVID-19 transmission.

1 *ELife*, 9, 1–20. <https://doi.org/10.7554/eLife.58728>

2 *SARS-CoV-2 lineages*. (n.d.). Retrieved July 30, 2020, from <https://cov-lineages.org/descriptions.html>

3 Stimson, J., Gardy, J., Mathema, B., Crudu, V., Cohen, T., & Colijn, C. (2019). Beyond the SNP
4 Threshold: Identifying Outbreak Clusters Using Inferred Transmissions. *Molecular Biology and*
5 *Evolution*, 36(3), 587–603. <https://doi.org/10.1093/molbev/msy242>

6 *tseemann/snp-dists: Pairwise SNP distance matrix from a FASTA sequence alignment*. (n.d.).
7 Retrieved July 30, 2020, from <https://github.com/tseemann/snp-dists>

8 *Using CQC data | Care Quality Commission*. (n.d.). Retrieved July 30, 2020, from
9 <https://www.cqc.org.uk/about-us/transparency/using-cqc-data>

10 *What is registration? | Care Quality Commission*. (n.d.). Retrieved July 30, 2020, from
11 <https://www.cqc.org.uk/guidance-providers/registration/what-registration>

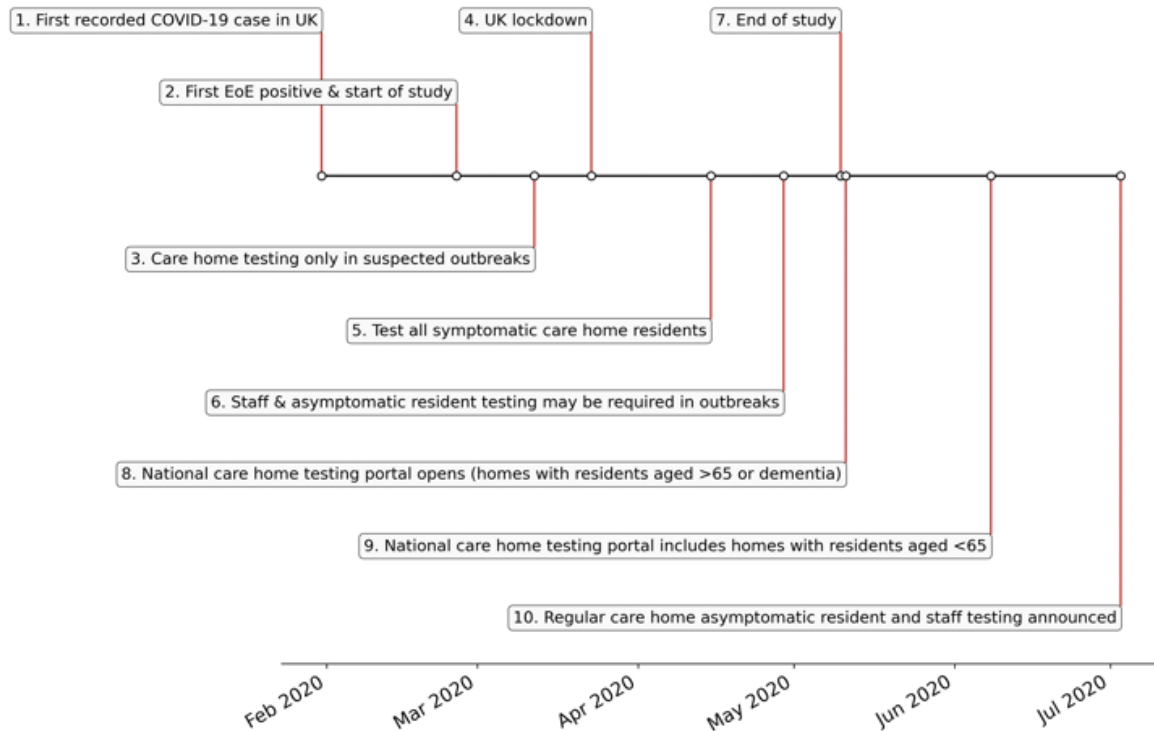
12 Wu, F., Zhao, S., Yu, B., Chen, Y. M., Wang, W., Song, Z. G., Hu, Y., Tao, Z. W., Tian, J. H., Pei, Y. Y.,
13 Yuan, M. L., Zhang, Y. L., Dai, F. H., Liu, Y., Wang, Q. M., Zheng, J. J., Xu, L., Holmes, E. C., &
14 Zhang, Y. Z. (2020). A new coronavirus associated with human respiratory disease in China.
15 *Nature*, 579(7798), 265–269. <https://doi.org/10.1038/s41586-020-2008-3>

16 Yu, G., Smith, D. K., Zhu, H., Guan, Y., & Lam, T. T. Y. (2017). Ggtree: an R Package for Visualization
17 and Annotation of Phylogenetic Trees With Their Covariates and Other Associated Data.
18 *Methods in Ecology and Evolution*, 8(1), 28–36. <https://doi.org/10.1111/2041-210X.12628>

19 Zhang, J., Litvinova, M., Wang, W., Wang, Y., Deng, X., Chen, X., Li, M., Zheng, W., Yi, L., Chen, X., Wu,
20 Q., Liang, Y., Wang, X., Yang, J., Sun, K., Longini, I. M., Halloran, M. E., Wu, P., Cowling, B. J., ...
21 Yu, H. (2020). Evolving epidemiology and transmission dynamics of coronavirus disease 2019
22 outside Hubei province, China: a descriptive and modelling study. *The Lancet Infectious*
23 *Diseases*, 20(7), 793–802. [https://doi.org/10.1016/S1473-3099\(20\)30230-9](https://doi.org/10.1016/S1473-3099(20)30230-9)

24

1 UK care home testing policy timeline



2

3

4

1. 31st January - first recorded case of covid-19 in the UK

5

2. 26th February - first case of COVID-19 in the East of England; start date of this study

6

3. 12th March – individuals in the community advised to self-isolate for 7 days, without testing. Testing only offered to care homes in the context of a suspected outbreak

7

8

4. 23rd March - UK lockdown officially begins

9

5. 15th April – action plan announced to test all symptomatic residents in care homes, plus testing of all residents prior to admission to care home from hospital

10

11

6. 29th April – testing guidance amended to reflect that asymptomatic as well symptomatic residents and staff in care homes may need to be tested as part of an outbreak

12

13

7. 10th May - end date of this study

14

8. 11th May – national whole care home testing portal (offering a single test to all staff and residents) goes live for care homes with residents aged 65 years and over or dementia patients

15

16

9. 8th June – national whole care home testing portal extends eligibility to care homes with residents aged under 65 years

17

18

10. 3rd July – announcement that regular asymptomatic testing for care home staff and residents will be rolled out through the national whole care home testing portal in July for homes with residents aged over 65 years or dementia patients

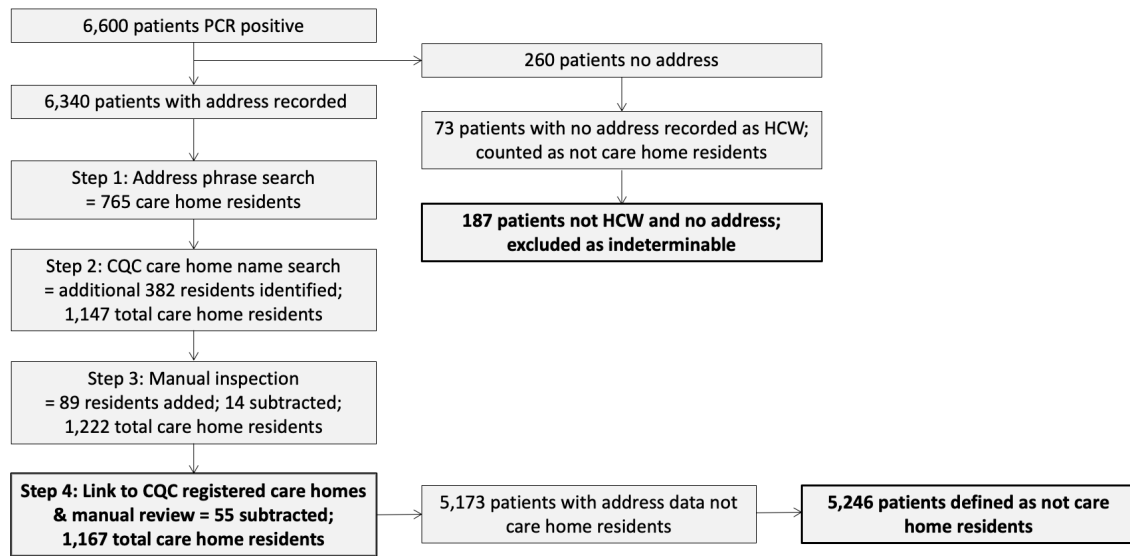
19

20

21

References: (*Coronavirus Testing - GOV.UK*, n.d.; *COVID-19 Policy Tracker | The Health Foundation*, n.d.)

1 Flow diagram for identifying care homes from Cambridge-COGUK metadata



2
3
4
5
6
7
8
9
10
11
12
13
14
15
16

Steps for identifying care home residents from the dataset (full description in Appendix pp 5-7). First, we searched for phrase matches in the address field of the patient electronic healthcare records (“care home”, “nursing home”, etc). Second, we searched for care home names in the patient address field using a dataset of care homes from the Care Quality Commission (CQC). The resulting list was manually inspected and every care home included in the study was linked to a registered CQC care home, allowing us to use CQC coding of whether nursing care was or was not available at each care home (referred to as “nursing homes” and “residential homes” in this study, respectively). If the address information was incomplete (no postcode and/or no address line) then the case was excluded as impossible to determine whether or not the patient was from a care home, unless the person was known to be a healthcare worker (HCW), in which case it was assumed they were not a care home resident. This process yielded the final result of 1,167 care home residents from 337 care homes; 5,246 individuals that were not care home residents, and 187 individuals that were indeterminable.

1 **Breakdown of main organisations submitting samples to Cambridge PHE**
 2 **Laboratory over study period**

3

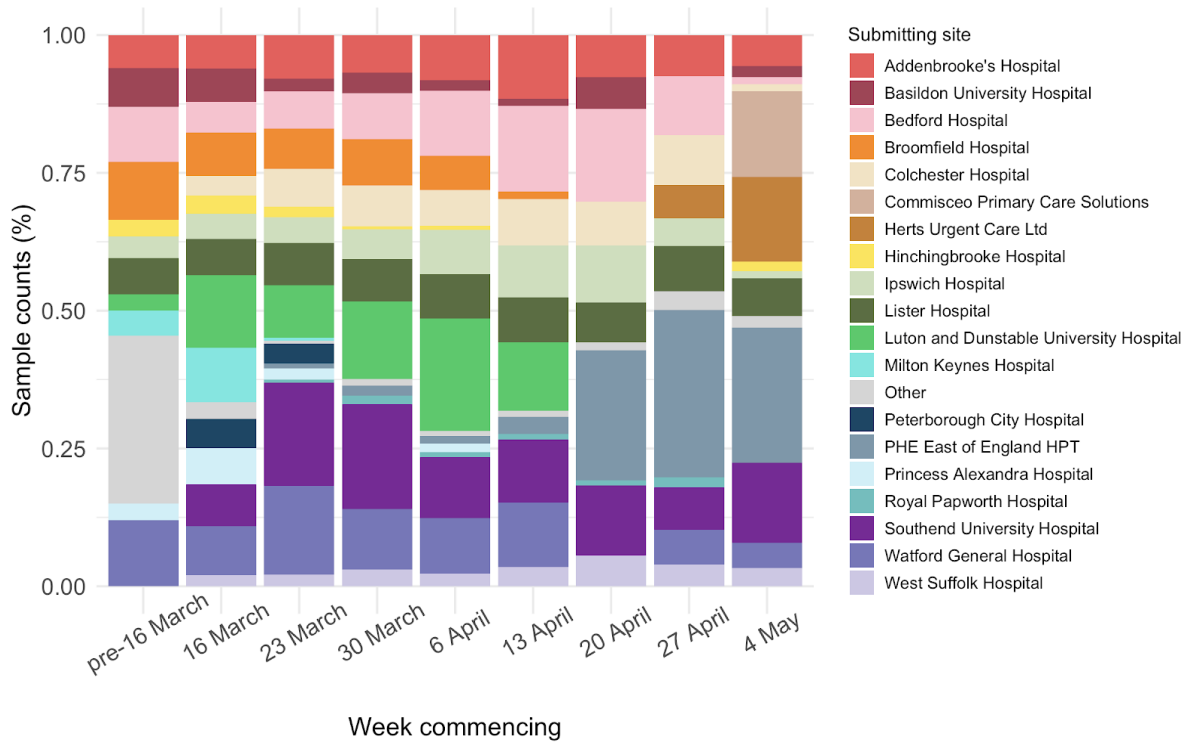
Submitting site	Number of positive cases
Southend University Hospital	888
Luton and Dunstable University Hospital	691
Bedford Hospital	668
Watford General Hospital	633
PHE East of England HPT	513
Addenbrooke's Hospital	512
Lister Hospital	506
Colchester Hospital	441
Ipswich Hospital	420
Broomfield Hospital	327
West Suffolk Hospital	199
Basildon University Hospital	196
Herts Urgent Care Ltd	97
Princess Alexandra Hospital	86
Royal Papworth Hospital	71
Hinchingbrooke Hospital	67
Commisceo Primary Care Solutions	63
Peterborough City Hospital	58
Milton Keynes Hospital	53
EEAST COVID-19 Coordination Centre	32
PHL London	19
Norfolk and Norwich University Hospital	17

Unknown	11
Other	32
Total	6600

1
2
3
4
5
6
7
8
9
10

To maintain patient anonymity, sites that submitted samples from ≤ 10 people with positive test results are not shown and are counted as “Other”. Note that over the course of the study, some sites changed testing provider from CMPHL as further testing sites became available around the region. This explains some of the variation in the relative proportion of cases submitted from each site. The numbers reported here do not necessarily reflect total case numbers for each hospital or submitting organisation, as tests may have been performed elsewhere or metadata not collected in this study; the numbers are included purely to indicate where the samples included in this study originated from.

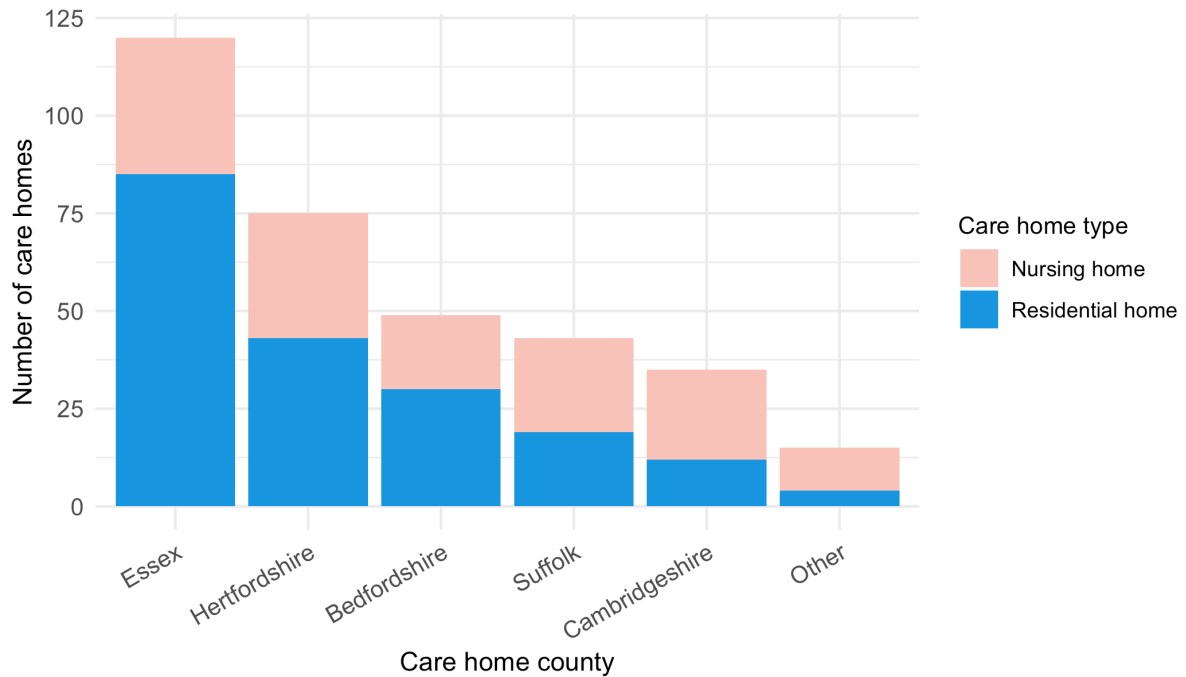
1 **Breakdown of main organisations submitting samples to Cambridge PHE**
 2 **Laboratory over study period per week**



Only showing sites that submitted samples from >50 people with positive test results over study period, otherwise counted as “Other”. To maintain patient anonymity, per time interval only showing sites that submitted samples from >5 people with positive test results (otherwise counted as “Other”). Data prior to 16 March is amalgamated here due to low sample numbers. Note that over the course of the study, some sites changed testing provider from CMPHL as further testing sites became available around the region. This explains some of the variation in the relative proportion of cases submitted from each site. The numbers reported here do not necessarily reflect total case numbers for each hospital or submitting organisation, as tests may have been performed elsewhere or metadata not collected in this study; the numbers are included purely to indicate where the samples included in this study originated from.

1 **Care home locations by county, showing nursing and residential homes**

2



3

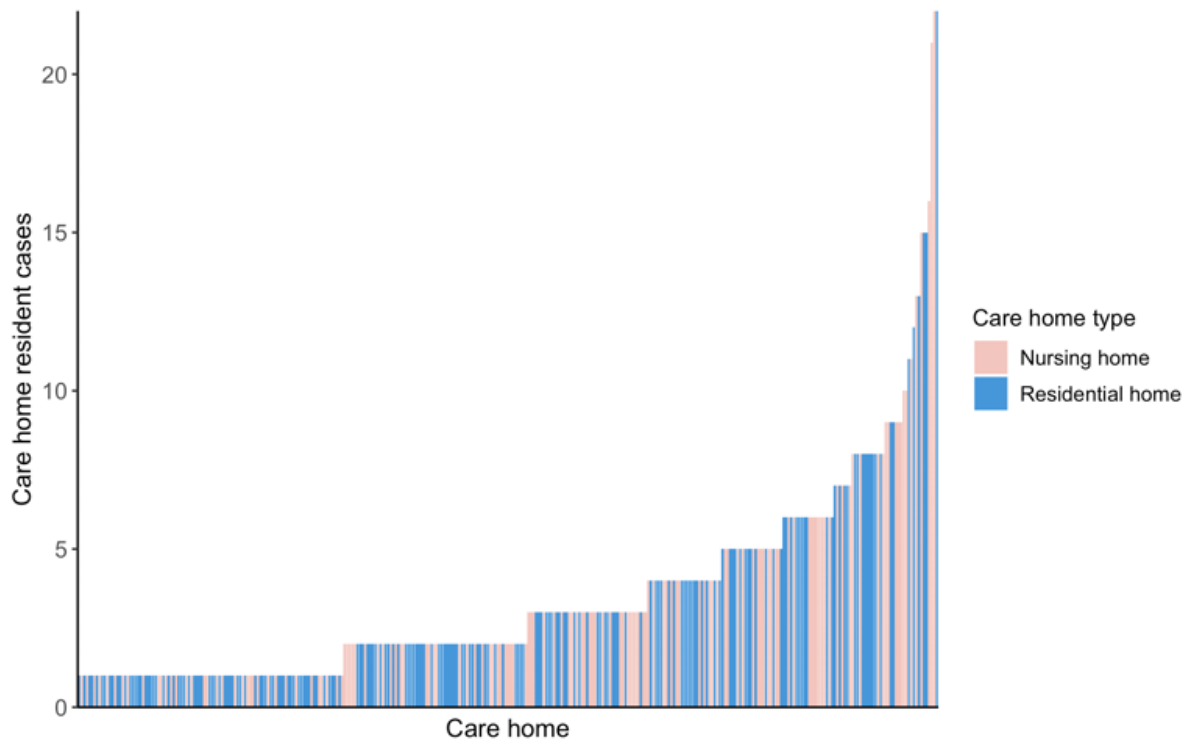
4

5 Only showing the five counties with the largest number of cases (all >25) to preserve patient
6 anonymity. Definitions of “nursing home” and “residential home” are based on Care Quality
7 Commission (CQC) information on whether nursing care is or is not present. If no nursing care is
8 available the home is classified as a residential home. If the same care home offers both nursing and
9 residential care then the home is classified as a nursing home (see Supplementary Methods for further
10 details).

11

12

1 Distribution of cases per care home for nursing and residential homes

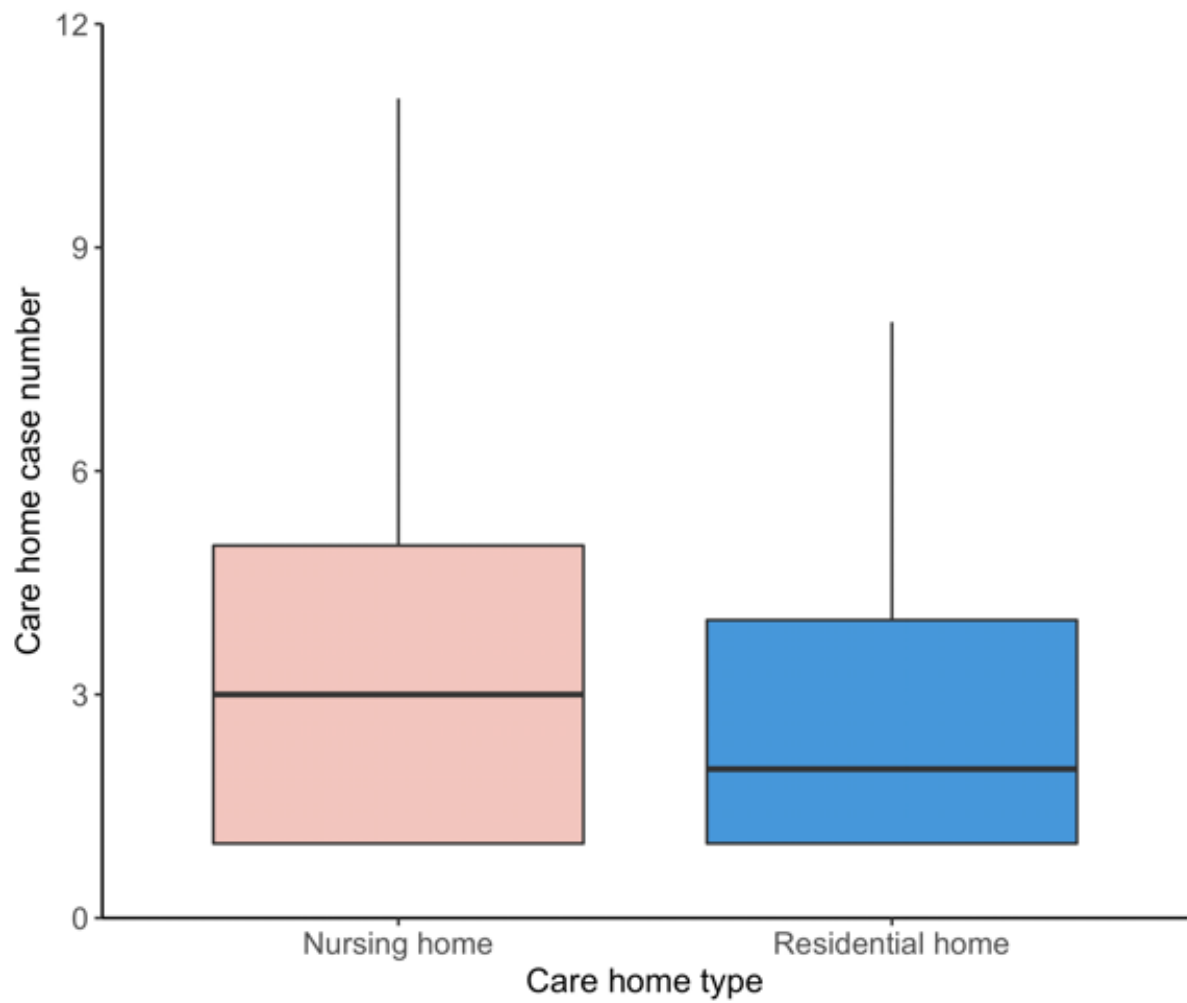


2

3 The number of positive cases per care home was highly skewed, such that a relatively small number
4 of care homes contributed a large proportion of cases (right-hand side of the plot).

5

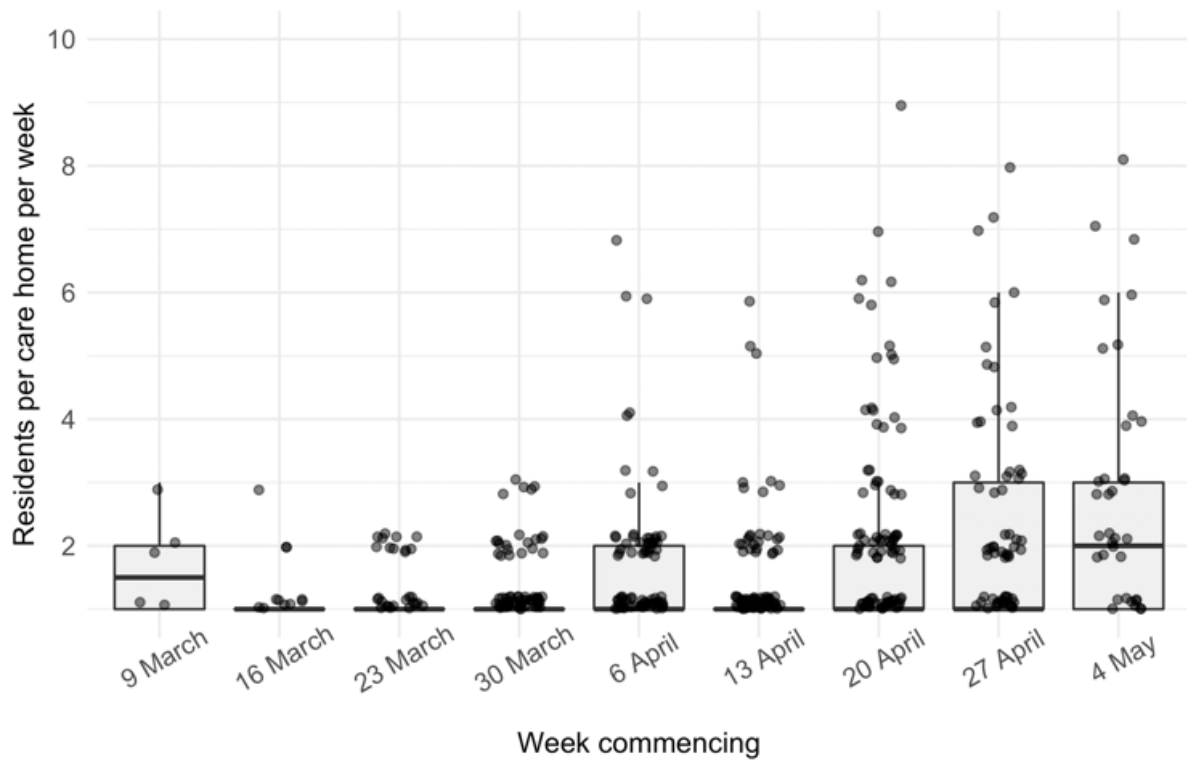
1 **Case numbers in residential and nursing homes**



2
3
4
5
6
7

Median cases per care home for nursing homes was 3 (IQR: 2-4), compared with 2 (IQR: 1-3) for residential homes ($P=0.03$, Wilcoxon rank sum test).

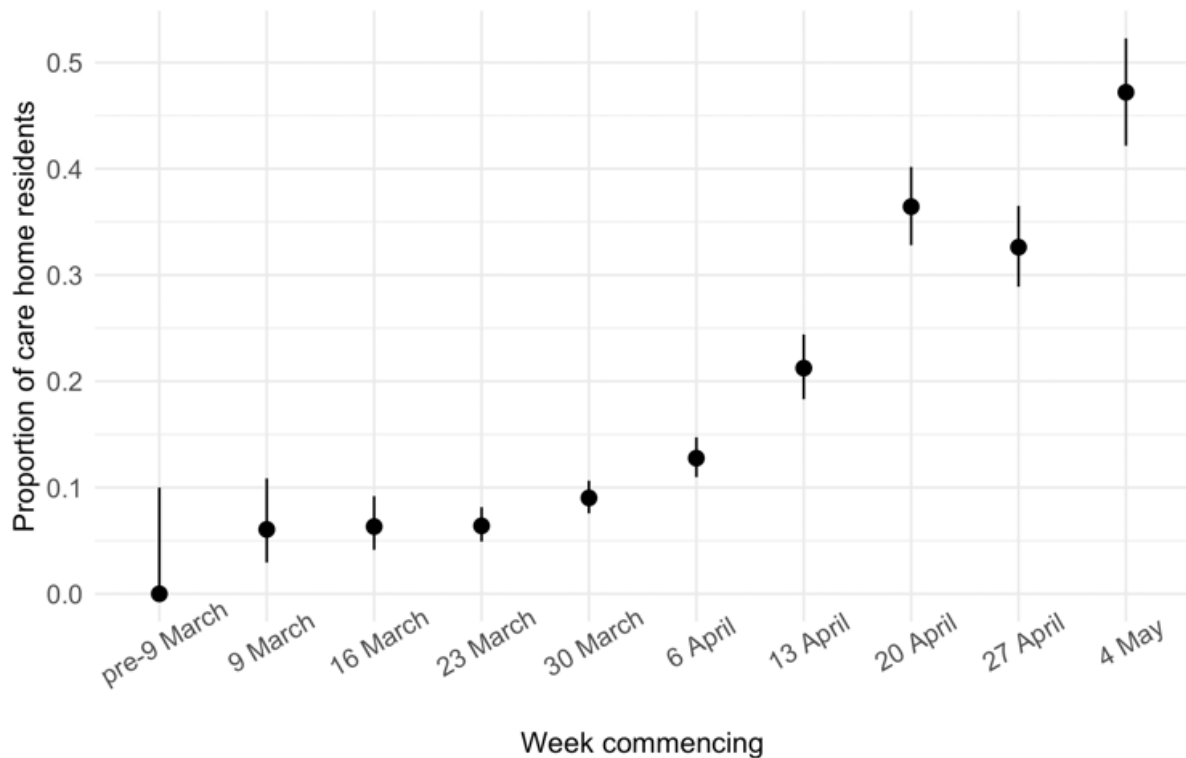
1 Positive cases per week per care home



2
3
4
5
6
7

Number of positive care home residents testing positive per care home per week over the study period. There was a slight trend for increasing positives per care home per week, though this may reflect increased testing rather than increased case burden within care homes.

1 Proportion of weekly positives from care home residents



2
3
4
5
6
7
8
9
10
11
12
13
14
15
16
17
18
19
20

Proportion of positive tests from care home residents for each week over the study period. Weeks commencing 24 Feb (N=4) and 2 March (N=31) were amalgamated into “pre-9 March” (N=35) due to the low case numbers for these weeks. Bars show 95% exact binomial confidence intervals for each week’s proportion. Raw numbers are shown in Appendix p 25. Statistical significance was tested using a Chi squared test, taking the number of care home residents each week as the “observed” counts, and calculating “expected” counts by multiplying total positives for each week by the overall proportion of care home residents across the whole population (i.e. the null hypothesis expects every week to have the same proportion of care home residents, equal to the overall proportion). The difference was significant ($P<0.0001$). Note that this trend may be influenced by the changing profile of sites submitting samples to the CMPHL; for example, if other hospitals in EoE tested more of their own samples later in the study period while community-based testing organisations still used CMPHL. However, we observed the same trend of an increasing proportion of cases coming from care homes over the study period for the patients tested acutely in Cambridge University Hospitals NHS Foundation Trust (CUH, Appendix p 26), which does not have variations in sample origins over the study period (all cases being from patients tested acutely at CUH).

1 **Case numbers from care homes and non-care home residents per week**

2

Week commencing	Care home resident	Not determined	Not care home resident	Weekly total	Care home resident (%)
24-Feb	0	0	≤5	≤5	0.0%
02-Mar	0	0	31	31	0.0%
09-Mar	10	6	149	165	6.1%
16-Mar	25	6	364	395	6.3%
23-Mar	60	26	852	938	6.4%
30-Mar	126	35	1235	1396	9.0%
06-Apr	162	43	1064	1269	12.8%
13-Apr	154	31	540	725	21.2%
20-Apr	247	16	415	678	36.4%
27-Apr	198	16	393	607	32.6%
04-May	185	8	199	392	47.2%

3

4 Data plotted in Figure 2A of main text, showing case numbers for care homes, non-care homes, and
5 undetermined, for all EoE samples tested at CMPHL.

6

7

1 **Case numbers tested at CUH by infection type**

2

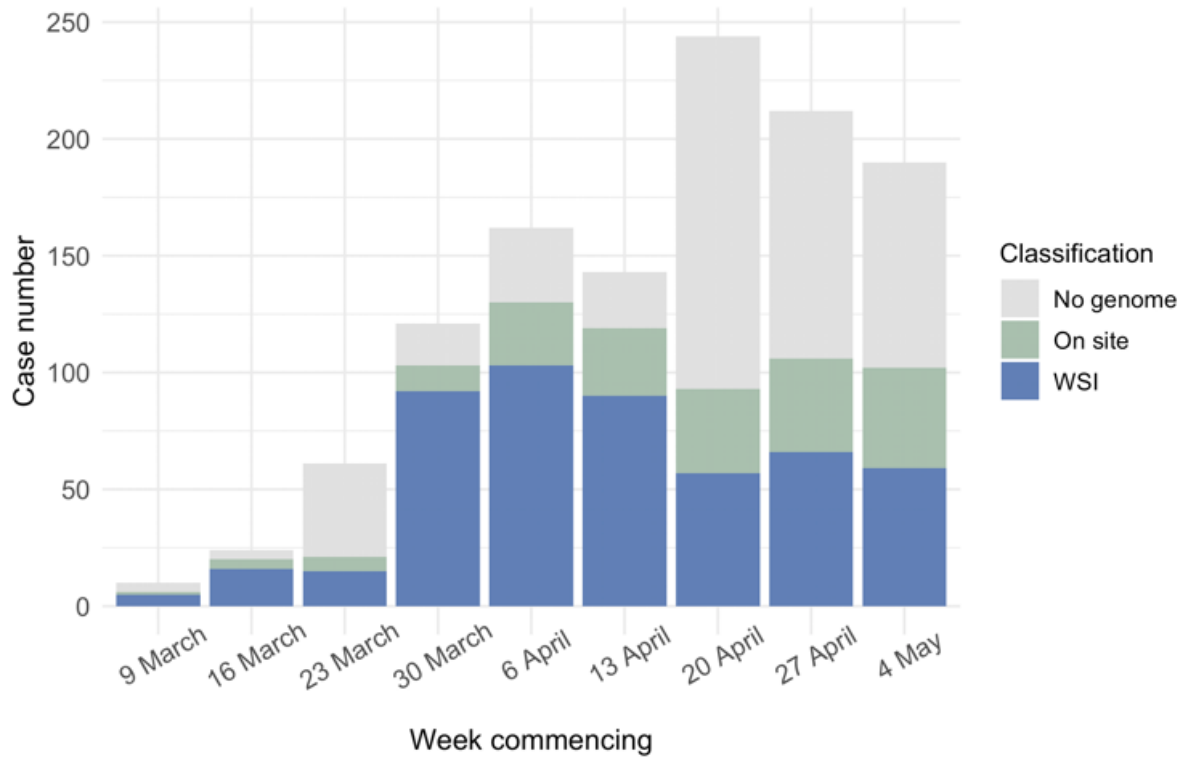
Week	CAI, care home-associated (%)	CAI, healthcare-associated	CAI, not care home	HAI definite	HAI indeterminate	HAI suspected	HCW	Other	Total
09-Mar	0 (0%)	2	9	0	1	0	0	0	12
16-Mar	0 (0%)	3	19	0	1	0	0	1	24
23-Mar	1 (1.3%)	6	50	11	1	5	1	0	75
30-Mar	5 (5.2%)	9	56	9	3	3	7	4	96
06-Apr	14 (14.1%)	14	50	10	1	2	4	4	99
13-Apr	14 (28.6%)	2	18	6	2	2	0	5	49
20-Apr	10 (24.4%)	8	15	2	2	0	3	1	41
27-Apr	9 (22.0%)	4	22	1	1	1	0	3	41
04-May	6 (22.2%)	1	17	0	1	0	0	2	27

3

4 Data plotted in Figure 2B of main text, showing case numbers for different categories of COVID-19
5 infection tested acutely at Cambridge University Hospitals NHS Foundation Trust (CUH). CAI =
6 Community Acquired Infection; HAI = Hospital Acquired Infection; HCW = Healthcare Worker. The
7 small number of “Other” cases were inpatient transfers to CUH where infection origins could not be
8 determined. Definitions of indeterminate, suspected and definite healthcare-associated hospital-
9 onset infections follow from (Meredith et al., 2020); i.e. CAI = first positive <48 hours from admission,
10 healthcare-associated if healthcare contact within 14 days; HAI indeterminate = first positive 48 hours
11 to 7 days post admission; HAI suspected = first positive 8-14 days post admission; HAI definite = first
12 positive >14 days post admission. As with (Meredith et al., 2020), these data only include HCW tested
13 acutely in CUH medical services, not cases detected through the CUH healthcare worker screening
14 programme.

15

1 Care home residents per week showing genome sequencing site



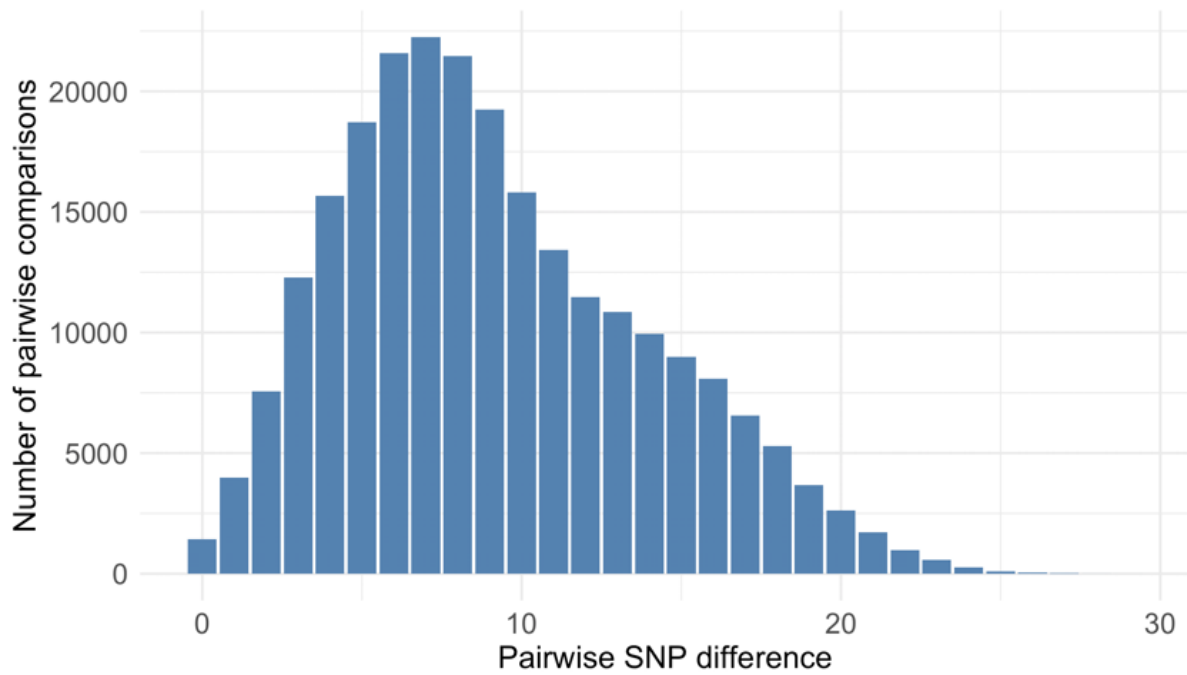
2

3 Plot shows total care home residents testing positive per week over the study period, showing number
4 of care home residents with genomes included in the study broken down by sequencing location (on
5 site in the Department of Pathology, Division of Virology or at the Wellcome Sanger Institute).

6

7

1 **Distribution of pairwise SNP differences between care home samples**

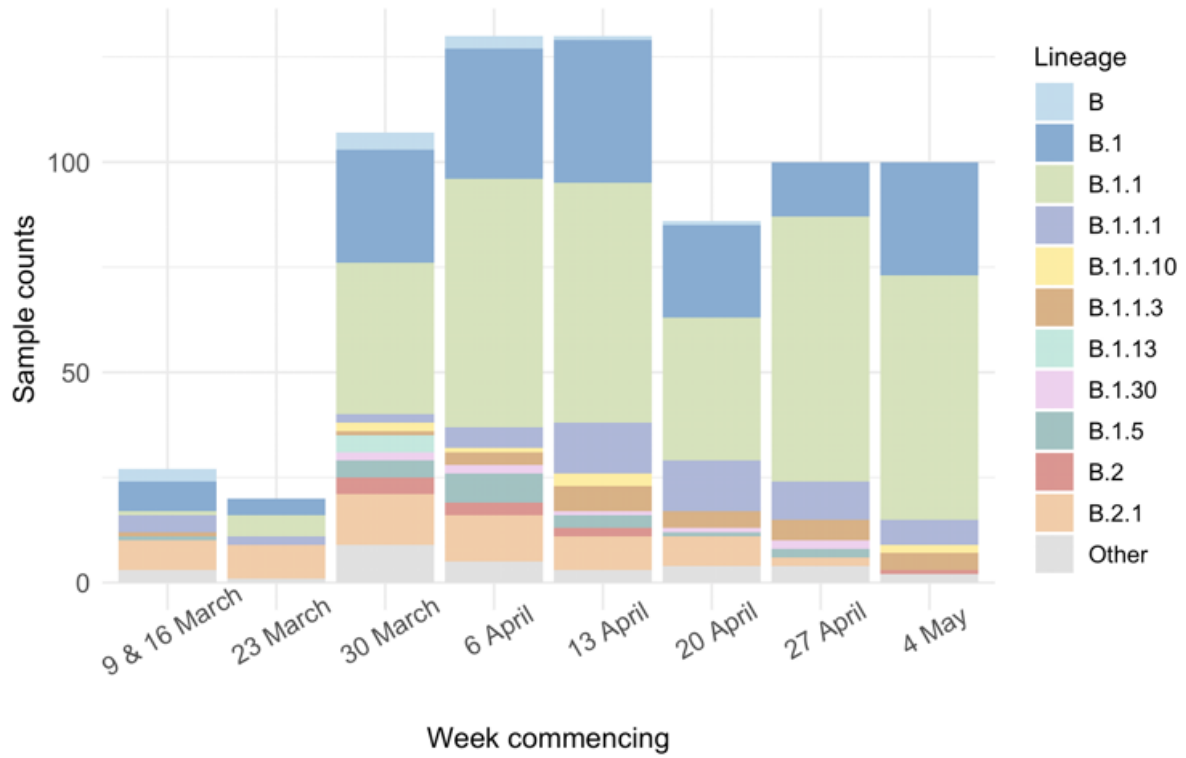


2
3
4
5
6

Pairwise SNP differences between the 700 care home residents (244,650 comparisons). Median pairwise SNP difference was 8.

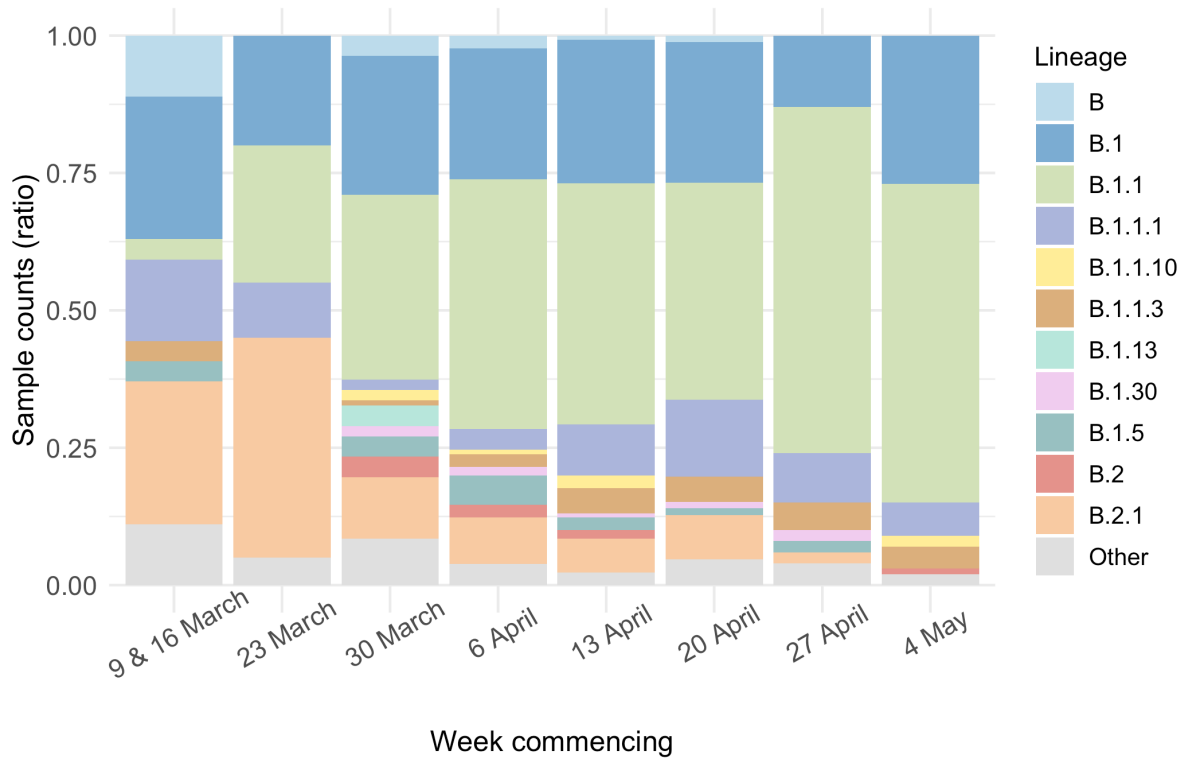
1 **Viral lineage composition in care home patients by week**

2 **A. Counts**



3

4 **B. Ratios**

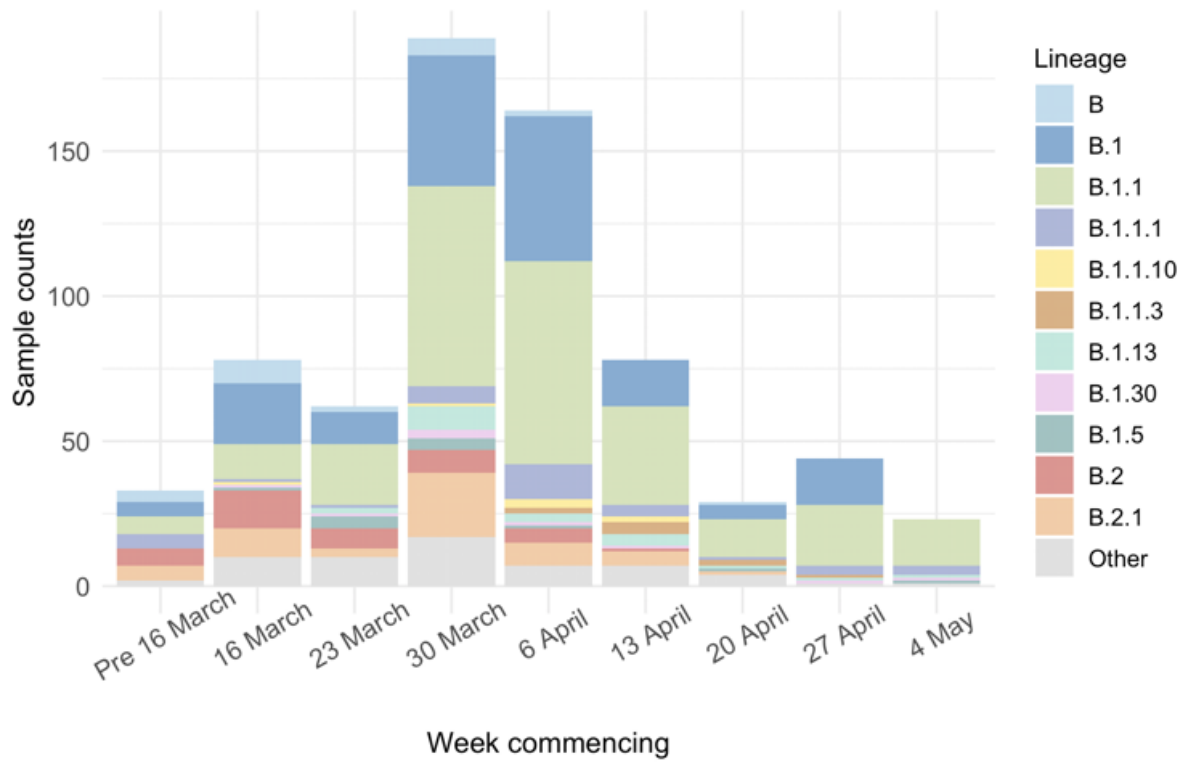


5

6

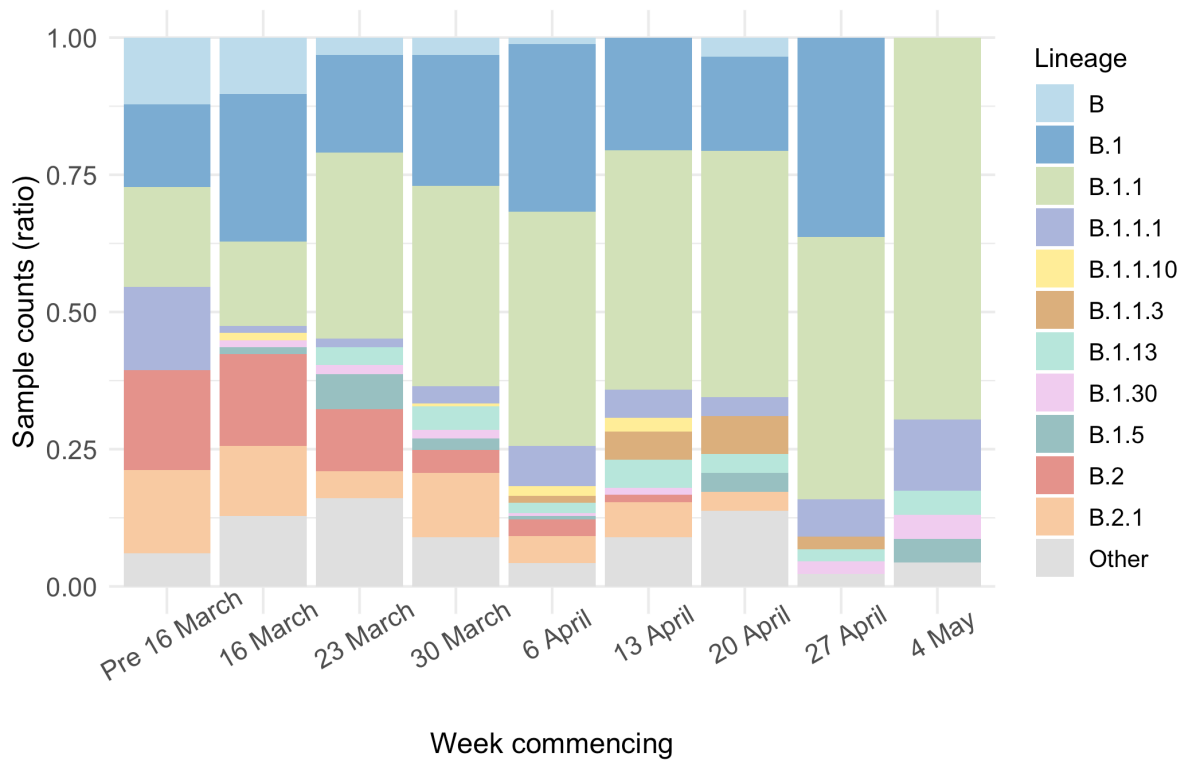
1 **Viral lineage composition in sub-sample of non care home patients by week**

2 **C. Counts**



3

4 **D. Ratios**

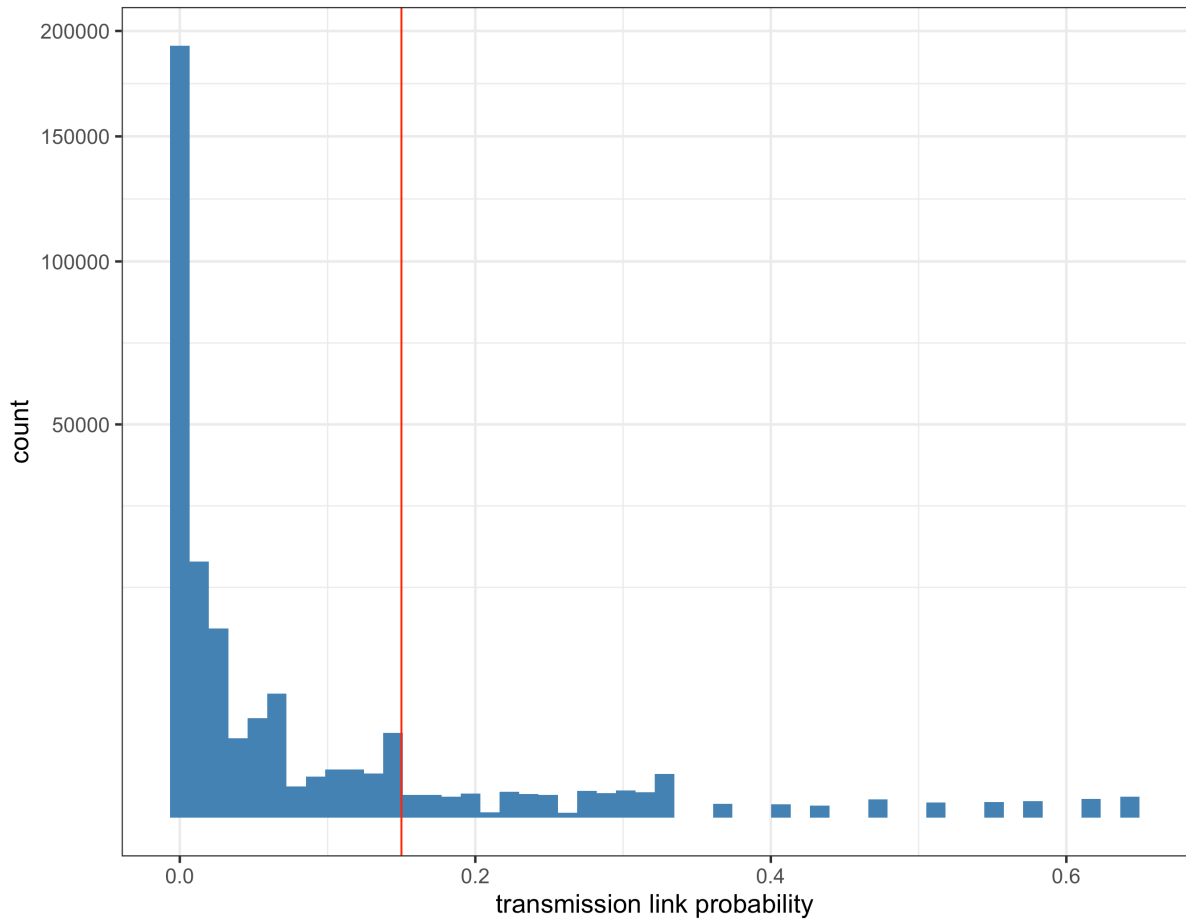


5

6

1 **Histogram of pairwise transmission probabilities between care home**
2 **samples**

3



4

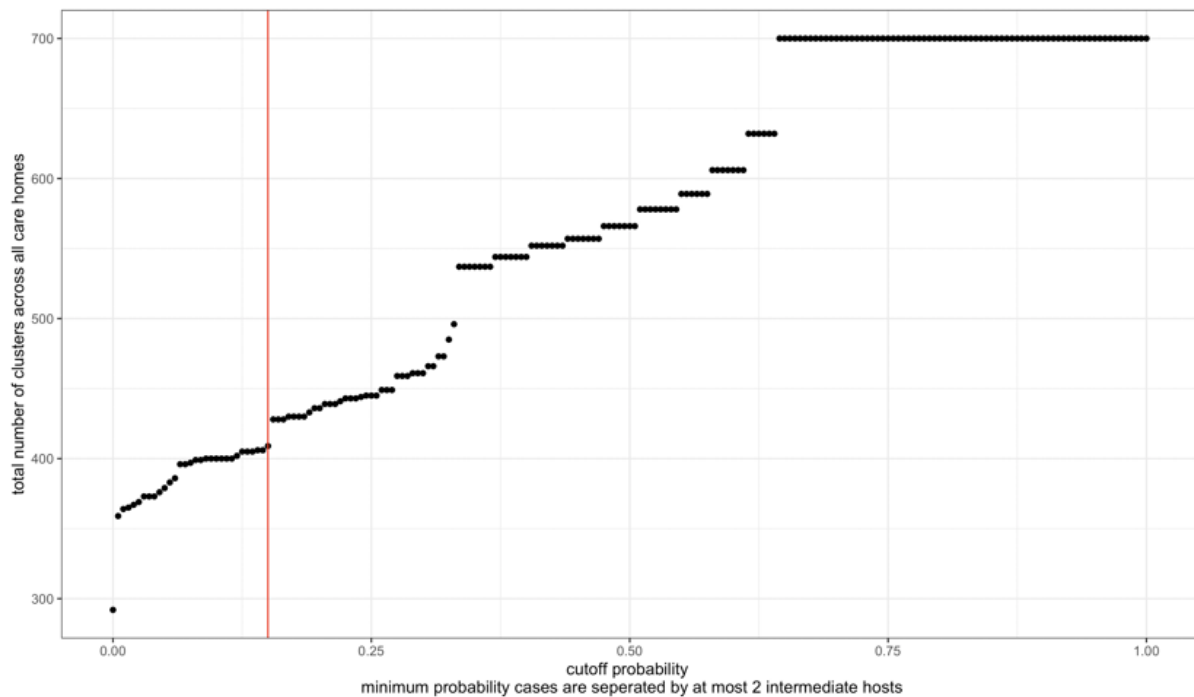
5

6 Histogram of the pairwise probabilities for cases being connected by ≤ 2 intermediate hosts for all 700
7 care home residents as inferred by the *transcluster* algorithm, with vertical red line at 0.15 showing
8 the cutoff used to identify care home clusters in our analysis. Note the data gaps along the x-axis
9 reflect the inherent discontinuity of the input datasets, measured in days and SNP differences
10 between cases.

11

1 Transmission probability threshold vs number of care home clusters

2



3

4

5 The *transcluster* algorithm computes the likelihood of two samples being linked within a given number
6 of intermediate hosts, based on the date and genetic differences between samples (assuming a given
7 serial interval and mutation rate, further details in Supplementary Methods). Changing the probability
8 threshold used to define clusters changes the number of clusters defined, with a higher threshold
9 yielding more clusters (and higher likelihood of transmission within each cluster). Our sample set
10 contained 700 genomes from residents in 292 care homes, and we treated each care home separately
11 as microcosms of potential infection networks. Therefore, the highest theoretical number of clusters
12 is 700, if every genome were its own cluster; and the lowest possible number of clusters is 292, if every
13 person within each care home was part of the same cluster. The cutoff we used ($\geq 15\%$ probability of
14 transmission with ≤ 2 intermediate hosts) is indicated by the red vertical line. This is arbitrary, and was
15 selected 1) because the distribution of pairwise SNP and date differences within resulting clusters
16 appeared reasonable (Appendix pp 33-34) and because of a “jump” in the number of clusters occurring
17 at that point.

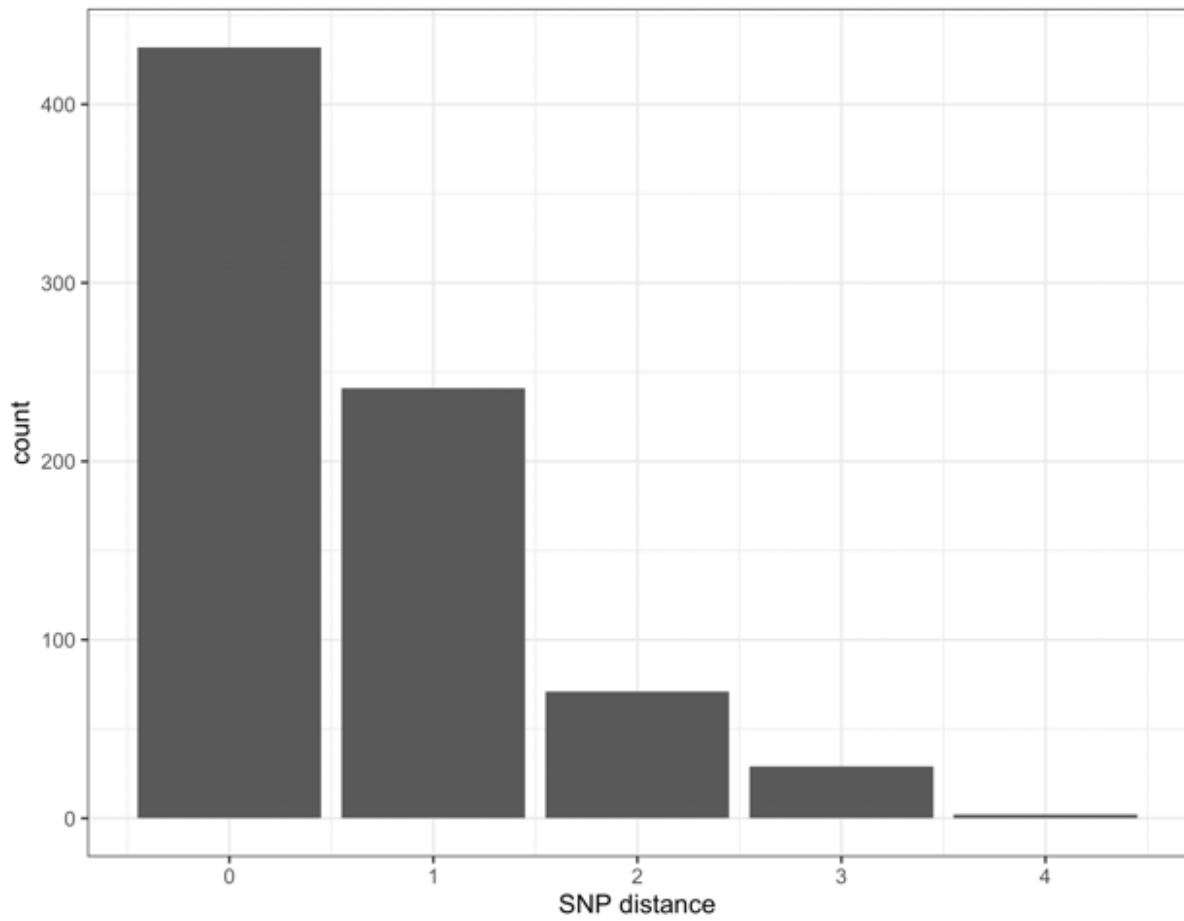
18

19

20

1 **Pairwise SNP difference distribution within clusters**

2



3

4 Most genomes within the clusters defined using our model parameters were separated by zero or 1

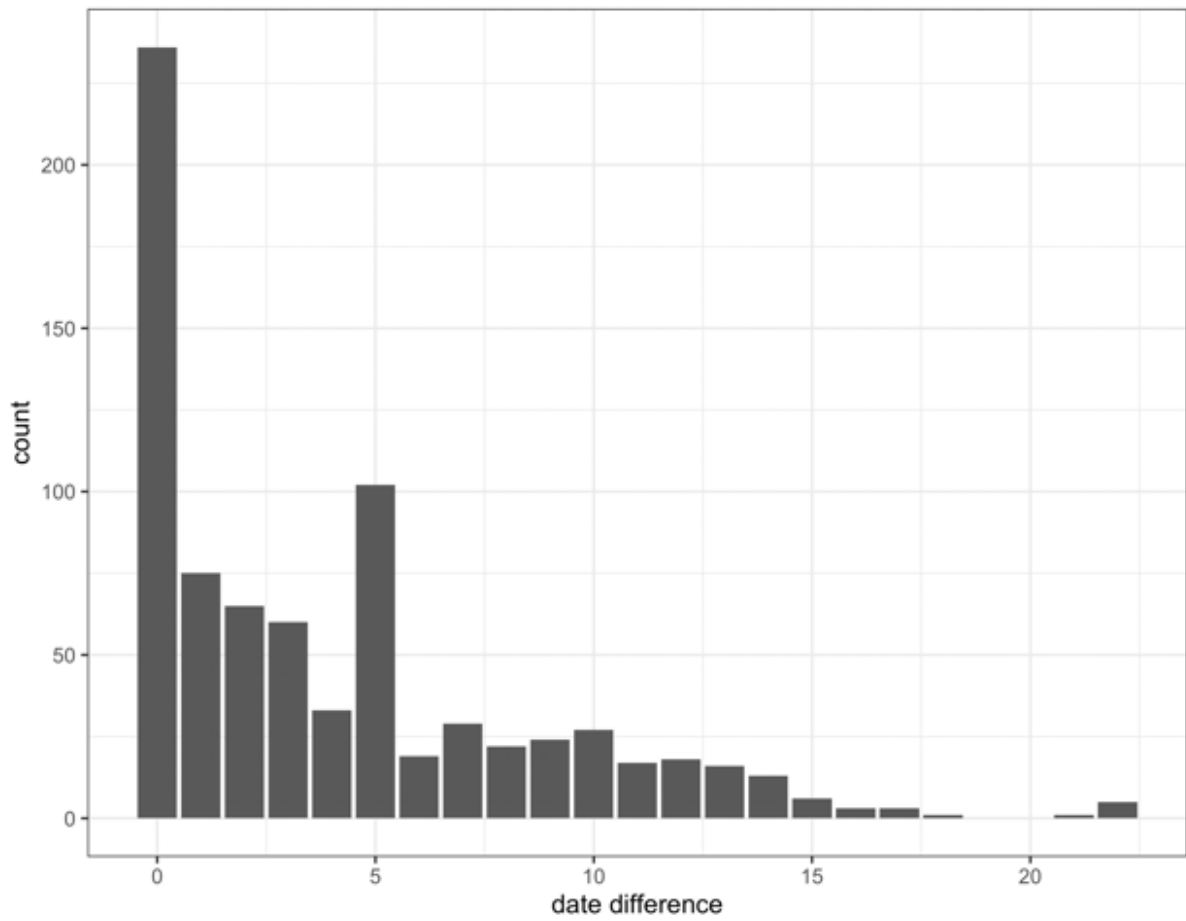
5 SNPs, with a small number having higher SNP differences

6

7

1 **Pairwise date difference distribution within clusters**

2



3

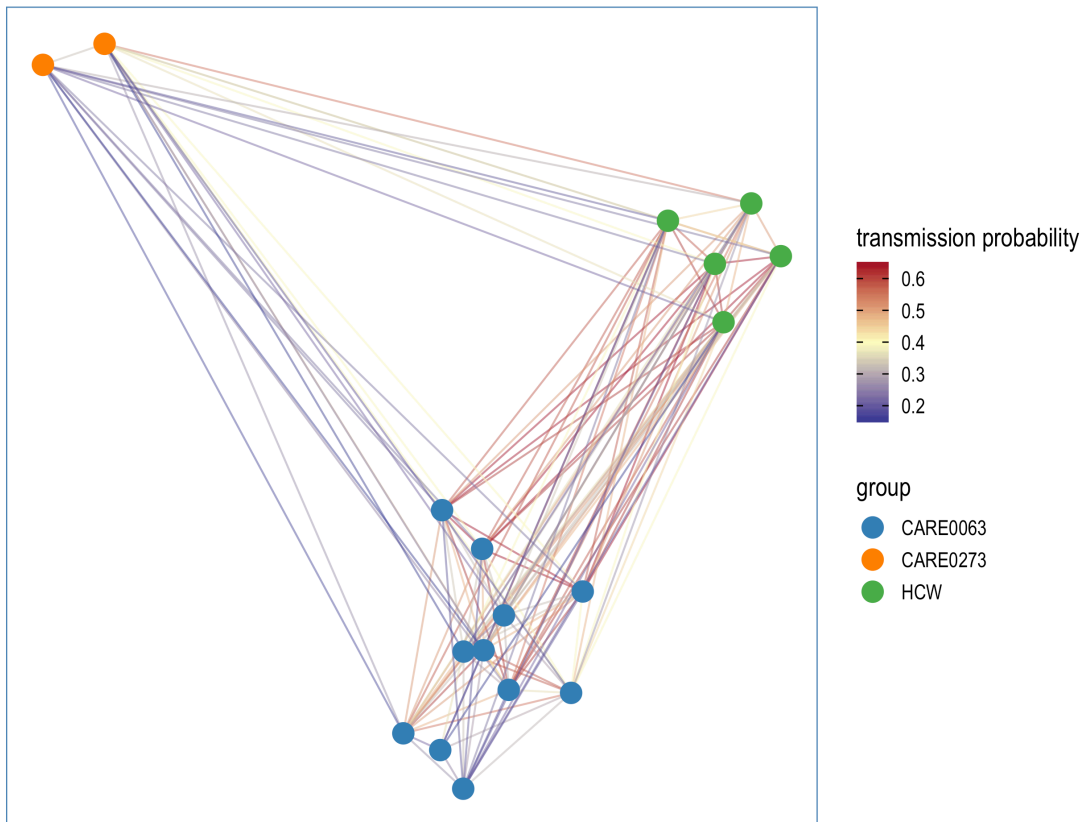
4 Most samples within the clusters defined using our model parameters were separated by <14 days,
5 with a small number separated by longer durations.

6

7

8

1 **Transmission links identified between two nearby care homes and several**
2 **healthcare workers**



3

4 Two care homes, CARE0063 (blue) and CARE0273 (orange), each had strong transmission links
5 identified with the *transcluster* algorithm to a group of healthcare workers (HCW, green). The HCW
6 comprised paramedics and care home carers – one working at CARE0063 and the other working at an
7 unknown care home. We do not have confirmatory epidemiological data available, but this raises the
8 possibility of the cases sharing a linked transmission network.

1 Cambridge COG-UK IDs for all samples analysed in this study

2 The main analysis set comprised 700 genomes from care home residents. Additionally, a
3 randomised selection of 700 genomes from non-care home residents was used for
4 comparisons (selection methods described in Appendix pp 8-9), and genomes from 76
5 healthcare workers (HCW) tested at CUH were included for the analysis of care home
6 resident-HCW transmission in CUH patients. The genomes are accessible through the COG-
7 UK website data section (<https://www.cogconsortium.uk/data/>) and via the MRC-CLIMB
8 (<https://www.climb.ac.uk/>), with COG-UK codes shown below.

9

CAMB-84B12	CAMB-784CB	CAMB-71CBB	CAMB-7A04D	CAMB-7B70B
CAMB-84E19	CAMB-784E9	CAMB-770C8	CAMB-7A001	CAMB-7BA5D
CAMB-84E73	CAMB-78504	CAMB-71C42	CAMB-7A0F2	CAMB-7BAC6
CAMB-84FBC	CAMB-74517	CAMB-776D5	CAMB-7A07A	CAMB-7B9BA
CAMB-84F9E	CAMB-7474E	CAMB-7767B	CAMB-7A03E	CAMB-785AA
CAMB-751A9	CAMB-74720	CAMB-777E1	CAMB-79FD8	CAMB-7BBE1
CAMB-75437	CAMB-7218E	CAMB-77277	CAMB-7A292	CAMB-7BBC3
CAMB-7566E	CAMB-72045	CAMB-777A5	CAMB-7A14A	CAMB-7BBA5
CAMB-74C21	CAMB-71E6A	CAMB-77954	CAMB-7A4BA	CAMB-7BB87
CAMB-74CA9	CAMB-75ADB	CAMB-778DF	CAMB-7A5A8	CAMB-7BC57
CAMB-74F91	CAMB-75A71	CAMB-777F0	CAMB-7A7C0	CAMB-7BBB4
CAMB-740F8	CAMB-75F27	CAMB-773A1	CAMB-7A836	CAMB-7BCDF
CAMB-73F47	CAMB-75D69	CAMB-77383	CAMB-7A7FD	CAMB-7BF30
CAMB-73FB0	CAMB-737B8	CAMB-7705F	CAMB-7A793	CAMB-78391
CAMB-741AA	CAMB-76454	CAMB-77286	CAMB-7A9AC	CAMB-7BF6D
CAMB-7427A	CAMB-761D5	CAMB-770E6	CAMB-7A98E	CAMB-7BEAC
CAMB-74104	CAMB-764CD	CAMB-77A9D	CAMB-78E72	CAMB-7C47C
CAMB-744A1	CAMB-762A5	CAMB-77A51	CAMB-78CA5	CAMB-7C412
CAMB-733A5	CAMB-76C4D	CAMB-73D10	CAMB-78D93	CAMB-7C46D
CAMB-7333C	CAMB-767C4	CAMB-7717A	CAMB-78B02	CAMB-7C403
CAMB-73211	CAMB-76B9B	CAMB-770F5	CAMB-791A5	CAMB-7C6EF
CAMB-731F6	CAMB-76B31	CAMB-7720E	CAMB-7912D	CAMB-7C685
CAMB-7317E	CAMB-76AF8	CAMB-7809A	CAMB-790E4	CAMB-7C588
CAMB-73114	CAMB-73A82	CAMB-79873	CAMB-793DC	CAMB-7C791
CAMB-730AE	CAMB-76894	CAMB-79785	CAMB-79318	CAMB-7C861
CAMB-72F93	CAMB-7681C	CAMB-79767	CAMB-796F1	CAMB-7C7A0
CAMB-72D7B	CAMB-76AE9	CAMB-79907	CAMB-7970D	CAMB-78276
CAMB-72B44	CAMB-76C7A	CAMB-79B89	CAMB-7B7FC	CAMB-7C8DA
CAMB-72A56	CAMB-77796	CAMB-73BDA	CAMB-7B6FF	CAMB-7CB0E
CAMB-727C8	CAMB-76DFF	CAMB-79E80	CAMB-7B7ED	CAMB-7CBD1

CAMB-7CCA1	CAMB-7EB66	CAMB-805EB	CAMB-818E1	CAMB-826C8
CAMB-7CC29	CAMB-7EE7C	CAMB-7AFAA	CAMB-818A5	CAMB-82974
CAMB-78786	CAMB-7F066	CAMB-80527	CAMB-81AEB	CAMB-7C38E
CAMB-7849E	CAMB-7F048	CAMB-80ABF	CAMB-81ACD	CAMB-7C3AC
CAMB-7CDF9	CAMB-7AD46	CAMB-8077C	CAMB-81A81	CAMB-82859
CAMB-7CD80	CAMB-7AD55	CAMB-80958	CAMB-819A2	CAMB-82DC3
CAMB-7CCED	CAMB-7E8E7	CAMB-808F1	CAMB-81B9D	CAMB-7C263
CAMB-7CEAB	CAMB-7E86F	CAMB-7B0C4	CAMB-81C8B	CAMB-8306F
CAMB-7859B	CAMB-7F0B1	CAMB-8082E	CAMB-81C6D	CAMB-830F6
CAMB-7CFF3	CAMB-7EFD3	CAMB-80800	CAMB-81C21	CAMB-830BA
CAMB-7D29F	CAMB-7AD91	CAMB-80DF2	CAMB-81C03	CAMB-7C2AF
CAMB-7D305	CAMB-7F312	CAMB-80CF5	CAMB-81B42	CAMB-832A5
CAMB-7D39C	CAMB-7AC76	CAMB-80CD7	CAMB-7B422	CAMB-7C218
CAMB-7D350	CAMB-7F2BB	CAMB-80E0E	CAMB-7B413	CAMB-8322D
CAMB-7D53C	CAMB-7F29D	CAMB-80DE3	CAMB-7B440	CAMB-831A8
CAMB-78865	CAMB-7ADBF	CAMB-80DA7	CAMB-81DC4	CAMB-8331B
CAMB-7D851	CAMB-7F233	CAMB-80C40	CAMB-7BFD6	CAMB-833EE
CAMB-7D754	CAMB-7F1FA	CAMB-7B0D3	CAMB-82358	CAMB-83366
CAMB-7D860	CAMB-7F34F	CAMB-80B16	CAMB-8225B	CAMB-7E243
CAMB-7D763	CAMB-7F2E8	CAMB-812B6	CAMB-7C00F	CAMB-80FB0
CAMB-7DA00	CAMB-7F37C	CAMB-81298	CAMB-824DD	CAMB-834FA
CAMB-7D9C7	CAMB-7F400	CAMB-81368	CAMB-824BF	CAMB-7E207
CAMB-7DA97	CAMB-7F558	CAMB-8132C	CAMB-82491	CAMB-8358E
CAMB-7DC73	CAMB-7AC3A	CAMB-8130E	CAMB-82437	CAMB-83560
CAMB-7DB49	CAMB-7F716	CAMB-812C5	CAMB-82419	CAMB-7E146
CAMB-78A50	CAMB-7AE52	CAMB-8124D	CAMB-7C166	CAMB-837B5
CAMB-7DE9B	CAMB-7F85F	CAMB-813A4	CAMB-824A0	CAMB-83797
CAMB-7DE04	CAMB-7FA59	CAMB-815CC	CAMB-7C139	CAMB-7E1DD
CAMB-7ABA6	CAMB-7F95C	CAMB-81580	CAMB-8267D	CAMB-7E1BF
CAMB-789DB	CAMB-7FA68	CAMB-81526	CAMB-825F8	CAMB-80F38
CAMB-7AB79	CAMB-7AEAD	CAMB-8175D	CAMB-8268C	CAMB-83B13
CAMB-7E0FE	CAMB-7AF40	CAMB-8173F	CAMB-82640	CAMB-83ADA
CAMB-7E9E4	CAMB-8018D	CAMB-816F6	CAMB-8281D	CAMB-7E155
CAMB-78953	CAMB-80123	CAMB-7B307	CAMB-826F5	CAMB-83A52
CAMB-7E96C	CAMB-80466	CAMB-7B316	CAMB-826B9	CAMB-83BC8
CAMB-7AAF4	CAMB-805DC	CAMB-7B334	CAMB-7C3CA	CAMB-83B6E
CAMB-7EB75	CAMB-80590	CAMB-816E7	CAMB-7C306	CAMB-7E137
CAMB-7AB00	CAMB-80536	CAMB-81975	CAMB-827A7	CAMB-83AAD
CAMB-7EAF0	CAMB-80518	CAMB-8181E	CAMB-82789	CAMB-83C3E
CAMB-7EBC0	CAMB-80642	CAMB-81966	CAMB-826E6	CAMB-83C10

CAMB-83BD7	CAMB-1AA92A	CAMB-8217C	CAMB-83D77	CAMB-1AE05E
CAMB-83CC5	CAMB-1AA8E1	CAMB-821C7	CAMB-83463	CAMB-1AE030
CAMB-83CA7	CAMB-1AAA90	CAMB-1ABB41	CAMB-83481	CAMB-1AE0E5
CAMB-83BE6	CAMB-1AAA54	CAMB-1ABAAE	CAMB-83DA4	CAMB-1AE0C7
CAMB-84277	CAMB-1AAA36	CAMB-1ABA26	CAMB-83DB3	CAMB-1ABEDF
CAMB-84329	CAMB-1AAB24	CAMB-1AB9ED	CAMB-82BAB	CAMB-1AE06D
CAMB-842C2	CAMB-1AAB06	CAMB-81FCE	CAMB-83E29	CAMB-1AE04F
CAMB-8424A	CAMB-1AACF4	CAMB-1AB895	CAMB-83F53	CAMB-1ABFBE
CAMB-8422C	CAMB-1AABD9	CAMB-8214F	CAMB-83F44	CAMB-1AE373
CAMB-80F29	CAMB-1AABE8	CAMB-81F64	CAMB-83E1A	CAMB-1ABF72
CAMB-841E3	CAMB-1AABAC	CAMB-1AB428	CAMB-83FBD	CAMB-1AC0F6
CAMB-841C5	CAMB-1AAE1C	CAMB-1AB40A	CAMB-1ADE55	CAMB-1AE382
CAMB-84435	CAMB-7FE3F	CAMB-1ABD78	CAMB-83F35	CAMB-1AE6B6
CAMB-84356	CAMB-1AAD79	CAMB-1ABD5A	CAMB-1ADD1C	CAMB-1AC1D5
CAMB-80EE0	CAMB-1AAE0D	CAMB-1ABCD5	CAMB-1ADE28	CAMB-1AC1F3
CAMB-7E322	CAMB-1AB23D	CAMB-81FFB	CAMB-84040	CAMB-1AE698
CAMB-8458D	CAMB-1AB21F	CAMB-1ABE2A	CAMB-1ADD67	CAMB-1ACFDB
CAMB-8456F	CAMB-81122	CAMB-829A1	CAMB-840D7	CAMB-1AE67A
CAMB-7E304	CAMB-1AB1F4	CAMB-1ABD87	CAMB-1ADFCB	CAMB-1AE65C
CAMB-1AA359	CAMB-1AB19A	CAMB-1ABD69	CAMB-8406E	CAMB-1AE63E
CAMB-80EB3	CAMB-1AB112	CAMB-82015	CAMB-1ADF34	CAMB-1AE610
CAMB-1AA3E0	CAMB-1AB1A9	CAMB-1AB6B9	CAMB-1ADF16	CAMB-1AC25A
CAMB-1AA368	CAMB-1AB18B	CAMB-82947	CAMB-840AA	CAMB-1AC296
CAMB-1AA30E	CAMB-81061	CAMB-1AB69B	CAMB-1ADEDD	CAMB-1AC2B4
CAMB-1AA4DE	CAMB-1AB2B5	CAMB-1AB65F	CAMB-1AE003	CAMB-1AC2D2
CAMB-80E95	CAMB-1AB3C1	CAMB-1AB631	CAMB-1AB6E6	CAMB-1AD0B9
CAMB-1AA69C	CAMB-1ABC5D	CAMB-1AB5DA	CAMB-1AB7C5	CAMB-1AD17A
CAMB-1AA614	CAMB-1ABC3F	CAMB-1AB5BC	CAMB-1AB7E3	CAMB-1AD13E
CAMB-1AA5BD	CAMB-1ABBF6	CAMB-1AB59E	CAMB-1ADF61	CAMB-1AD12F
CAMB-1AA66F	CAMB-8117D	CAMB-1AB552	CAMB-1AE2D0	CAMB-1AE71D
CAMB-1AA623	CAMB-1ABCC6	CAMB-1AB6C8	CAMB-1AE2B2	CAMB-1AE847
CAMB-1AA5EA	CAMB-1ABC6C	CAMB-1AB6AA	CAMB-1AE294	CAMB-1AE7C2
CAMB-1AA83C	CAMB-8109E	CAMB-1AB66E	CAMB-1AE1F1	CAMB-1AD0E6
CAMB-7F88C	CAMB-1ABBAB	CAMB-1AB640	CAMB-1AE1D3	CAMB-1AE72C
CAMB-80E86	CAMB-1ABB6F	CAMB-82B32	CAMB-1AE1B5	CAMB-1AE9BD
CAMB-1AA7C6	CAMB-1ABB32	CAMB-82B50	CAMB-1AE197	CAMB-1AD2C2
CAMB-7FD23	CAMB-821A9	CAMB-83D0E	CAMB-1AE13D	CAMB-1AE8B0
CAMB-80E59	CAMB-1AB4FB	CAMB-82A80	CAMB-1ABEC0	CAMB-1AF03F
CAMB-7FD05	CAMB-1AB4DD	CAMB-829FC	CAMB-1ABEA2	CAMB-1AD004
CAMB-1AA948	CAMB-1AB491	CAMB-82CA8	CAMB-1AE07C	CAMB-1AF08A

1

2

CAMB-1AD268	CAMB-1AD981	CAMB-1B1182	CAMB-1B1823	CAMB-84AF7
CAMB-1AEFCA	CAMB-1AFC4A	CAMB-1B12F8	CAMB-1B1C90	CAMB-84AD9
CAMB-1AF1F0	CAMB-1AFC2C	CAMB-1AFF9C	CAMB-1B17EA	CAMB-84B6D
CAMB-1AF1B4	CAMB-1AFBC5	CAMB-1B145C	CAMB-1B188D	CAMB-84B8B
CAMB-1AF15A	CAMB-1AFB2F	CAMB-1B143E	CAMB-1B17CC	CAMB-84C1F
CAMB-1AD893	CAMB-1AEBC6	CAMB-1AFFBA	CAMB-1AF56D	CAMB-84C3D
CAMB-1AD70F	CAMB-1AFB98	CAMB-1B1410	CAMB-1B06A2	CAMB-84D76
CAMB-1AD796	CAMB-1AFB7A	CAMB-1AFFE7	CAMB-1B0709	CAMB-84E37
CAMB-1AD6B7	CAMB-1AFB10	CAMB-1B142F	CAMB-1B0745	CAMB-84EBF
CAMB-1AF891	CAMB-1AFDA1	CAMB-1B13C8	CAMB-1B0718	CAMB-84F70
CAMB-1AF961	CAMB-1AFD47	CAMB-1B13AA	CAMB-1B0727	CAMB-75622
CAMB-1AF925	CAMB-1AFD0B	CAMB-1B1313	CAMB-1B0763	CAMB-75516
CAMB-1ADAD9	CAMB-1AFCE0	CAMB-1B151D	CAMB-1B1BC0	CAMB-7537E
CAMB-1AF846	CAMB-1AFDFC	CAMB-1B1489	CAMB-1AED75	CAMB-753B2
CAMB-1AF679	CAMB-1AFDDE	CAMB-1B011A	CAMB-1B1C45	CAMB-754FB
CAMB-1AF65B	CAMB-1AFDB0	CAMB-1B144D	CAMB-1B1C27	CAMB-7525B
CAMB-1AF63D	CAMB-1AFD92	CAMB-1B1586	CAMB-1B0754	CAMB-7524C
CAMB-1AF61F	CAMB-1ADBC7	CAMB-1B14D4	CAMB-1B1E6D	CAMB-75525
CAMB-1B047B	CAMB-1B087F	CAMB-1AF5E5	CAMB-1B1DCA	CAMB-75455
CAMB-1B0411	CAMB-1B08E8	CAMB-1B1568	CAMB-1AED93	CAMB-74FBF
CAMB-1B03D8	CAMB-1ADBB8	CAMB-1B15E0	CAMB-1AEDA2	CAMB-754DD
CAMB-1B048A	CAMB-1AEBE4	CAMB-1B15C2	CAMB-1B1DAC	CAMB-74FDD
CAMB-1ADB21	CAMB-1B1119	CAMB-1AF66A	CAMB-1AED84	CAMB-754B7
CAMB-1AEBB7	CAMB-1B1049	CAMB-1B004A	CAMB-1B1E21	CAMB-7565F
CAMB-1B03C9	CAMB-1B102B	CAMB-1B1717	CAMB-1B1E03	CAMB-75367
CAMB-1ADB12	CAMB-1AEC1E	CAMB-1B002C	CAMB-1B1DE8	CAMB-750CA
CAMB-1B02F9	CAMB-1B1146	CAMB-1B07BE	CAMB-1B1D8E	CAMB-7517C
CAMB-1B02DB	CAMB-1B10EF	CAMB-1B07FA	CAMB-1AEF15	CAMB-75130
CAMB-1ADAF7	CAMB-1B10C1	CAMB-1B0824	CAMB-1B0183	CAMB-75491
CAMB-1B0235	CAMB-1AECD2	CAMB-1B1629	CAMB-1B228E	CAMB-75200
CAMB-1B0217	CAMB-1B11BF	CAMB-1B0648	CAMB-8473C	CAMB-755BC
CAMB-1B01DE	CAMB-1B01A1	CAMB-1B0666	CAMB-84778	CAMB-74C12
CAMB-1B0341	CAMB-1AED0C	CAMB-1AF55E	CAMB-84875	CAMB-7522E
CAMB-1B02CC	CAMB-1B001D	CAMB-1B1814	CAMB-84945	CAMB-74F37
CAMB-1AD80C	CAMB-1B1261	CAMB-1AEF24	CAMB-84954	CAMB-7567D
CAMB-1AFB01	CAMB-1B1155	CAMB-1B0693	CAMB-849CD	CAMB-75024
CAMB-1AFAE6	CAMB-1B1304	CAMB-1B1841	CAMB-84A06	CAMB-74BF7
CAMB-1AD963	CAMB-1AFFC9	CAMB-1AED57	CAMB-846E4	CAMB-74F82
CAMB-1AFA7D	CAMB-1B1164	CAMB-1B18E7	CAMB-84AAC	CAMB-74CF4
CAMB-1AD972	CAMB-1B12E9	CAMB-1AED39	CAMB-84BB8	CAMB-74B24

CAMB-75121	CAMB-7323F	CAMB-79A40	CAMB-76472	CAMB-71AEE
CAMB-74A09	CAMB-731D8	CAMB-79A04	CAMB-762D2	CAMB-77022
CAMB-74BAC	CAMB-731C9	CAMB-79AF5	CAMB-760F6	CAMB-73800
CAMB-74B33	CAMB-731AB	CAMB-7233D	CAMB-765CA	CAMB-75929
CAMB-74B60	CAMB-7319C	CAMB-79AB9	CAMB-7658E	CAMB-75956
CAMB-74D2E	CAMB-73071	CAMB-79A9B	CAMB-76481	CAMB-759A1
CAMB-74D6A	CAMB-73053	CAMB-74571	CAMB-76445	CAMB-77514
CAMB-74B42	CAMB-73017	CAMB-74526	CAMB-763EE	CAMB-774F9
CAMB-749A2	CAMB-73008	CAMB-74508	CAMB-763A2	CAMB-7749F
CAMB-74E85	CAMB-72FEE	CAMB-7473F	CAMB-762E1	CAMB-77471
CAMB-74E58	CAMB-72FOC	CAMB-74711	CAMB-76032	CAMB-76FEA
CAMB-74D3D	CAMB-72EB4	CAMB-72160	CAMB-73994	CAMB-77392
CAMB-740CB	CAMB-72EA5	CAMB-72072	CAMB-76D0E	CAMB-76FCC
CAMB-751E5	CAMB-72E96	CAMB-72063	CAMB-76B40	CAMB-76FAE
CAMB-758A4	CAMB-72D11	CAMB-72054	CAMB-769EC	CAMB-77374
CAMB-73FA1	CAMB-72C9C	CAMB-72018	CAMB-769A0	CAMB-737D6
CAMB-74395	CAMB-72C6F	CAMB-71FB2	CAMB-768C1	CAMB-7731A
CAMB-74C5E	CAMB-72C41	CAMB-71F67	CAMB-7680D	CAMB-772D1
CAMB-74016	CAMB-72C23	CAMB-71F49	CAMB-766E5	CAMB-77990
CAMB-73F29	CAMB-72C14	CAMB-7469C	CAMB-76C10	CAMB-772B3
CAMB-74377	CAMB-72BEA	CAMB-7468D	CAMB-76BF5	CAMB-7774B
CAMB-7419B	CAMB-72BAE	CAMB-71E88	CAMB-76ABC	CAMB-7768A
CAMB-7424D	CAMB-72B62	CAMB-75CF3	CAMB-76973	CAMB-7766C
CAMB-74465	CAMB-72AB0	CAMB-75B9C	CAMB-768B2	CAMB-759CF
CAMB-74140	CAMB-72A1A	CAMB-75B7E	CAMB-76C6B	CAMB-778B1
CAMB-73712	CAMB-729A4	CAMB-759FC	CAMB-76991	CAMB-77893
CAMB-736AC	CAMB-72986	CAMB-75C8A	CAMB-76DD1	CAMB-7756F
CAMB-735DC	CAMB-7292C	CAMB-75C6C	CAMB-71D30	CAMB-737C7
CAMB-735CD	CAMB-728B6	CAMB-75BAB	CAMB-7614E	CAMB-774AE
CAMB-735AF	CAMB-72889	CAMB-75B41	CAMB-76102	CAMB-773CF
CAMB-73581	CAMB-7282F	CAMB-75F36	CAMB-73A64	CAMB-77365
CAMB-74614	CAMB-72740	CAMB-75DD2	CAMB-71C9D	CAMB-772A4
CAMB-73527	CAMB-7269E	CAMB-75D96	CAMB-71C8E	CAMB-73D98
CAMB-734EE	CAMB-725EC	CAMB-75D1E	CAMB-71C60	CAMB-76F35
CAMB-74623	CAMB-72591	CAMB-76005	CAMB-71B54	CAMB-77ABB
CAMB-73E1D	CAMB-72546	CAMB-75F81	CAMB-739B2	CAMB-77A33
CAMB-73E77	CAMB-724FE	CAMB-75D4B	CAMB-77040	CAMB-77AAC
CAMB-73E86	CAMB-72476	CAMB-75D2D	CAMB-71B18	CAMB-73D2F
CAMB-733D2	CAMB-72458	CAMB-76612	CAMB-71B09	CAMB-771B6
CAMB-7327B	CAMB-7243A	CAMB-765BB	CAMB-71AFD	CAMB-77198

CAMB-7804F	CAMB-7A739	CAMB-78337	CAMB-7CF99	CAMB-7DF01
CAMB-76E65	CAMB-7A9E8	CAMB-781E2	CAMB-7CF3F	CAMB-7DFF2
CAMB-76E47	CAMB-7A9CA	CAMB-7BD54	CAMB-7D00E	CAMB-78A32
CAMB-7812E	CAMB-7A99D	CAMB-7BE42	CAMB-7D059	CAMB-7DD61
CAMB-78012	CAMB-73B16	CAMB-7BDEB	CAMB-7D077	CAMB-7E0C1
CAMB-77D2B	CAMB-77B9A	CAMB-7862F	CAMB-78944	CAMB-78971
CAMB-77DB2	CAMB-78D48	CAMB-7C53D	CAMB-7D226	CAMB-7E049
CAMB-79855	CAMB-78DB1	CAMB-7C4F4	CAMB-78883	CAMB-7EA87
CAMB-79864	CAMB-78D75	CAMB-7C4D6	CAMB-7D1CF	CAMB-7EA4B
CAMB-7980A	CAMB-78D39	CAMB-7C4B8	CAMB-7D1A1	CAMB-78917
CAMB-797C1	CAMB-78B99	CAMB-7C61C	CAMB-78A14	CAMB-7E98A
CAMB-798CE	CAMB-78B3F	CAMB-7C6C1	CAMB-7D420	CAMB-7EC18
CAMB-79C59	CAMB-78B11	CAMB-7C649	CAMB-7D323	CAMB-7EB39
CAMB-79C1D	CAMB-78FD9	CAMB-786A7	CAMB-7D3F6	CAMB-7EAE1
CAMB-79BD4	CAMB-7913C	CAMB-7C5E2	CAMB-7D37E	CAMB-7ECDC
CAMB-79C0E	CAMB-79336	CAMB-7C5C4	CAMB-7D2F9	CAMB-7EC90
CAMB-79CE0	CAMB-79415	CAMB-7C737	CAMB-7D54B	CAMB-7ED60
CAMB-79D38	CAMB-7B6A4	CAMB-7C6FE	CAMB-7D4A8	CAMB-787D1
CAMB-79CB3	CAMB-796B5	CAMB-7C7CE	CAMB-7D718	CAMB-7A8FA
CAMB-79F32	CAMB-7B64A	CAMB-7C782	CAMB-7D675	CAMB-7EEC7
CAMB-79E9F	CAMB-79679	CAMB-7C746	CAMB-78847	CAMB-7AD37
CAMB-7A12C	CAMB-795F4	CAMB-7874A	CAMB-7D684	CAMB-7EE5E
CAMB-7A0E3	CAMB-7957C	CAMB-7C931	CAMB-7D0FF	CAMB-7EE30
CAMB-7A0C5	CAMB-78364	CAMB-7C8F8	CAMB-7D89D	CAMB-7F0C0
CAMB-7A098	CAMB-78346	CAMB-7C922	CAMB-7D833	CAMB-7F00C
CAMB-7A010	CAMB-7B7CF	CAMB-7CA01	CAMB-7D7BE	CAMB-7AAC7
CAMB-79FF6	CAMB-7B783	CAMB-7CAF2	CAMB-7D790	CAMB-7AA7C
CAMB-7A21A	CAMB-7B747	CAMB-7CB3B	CAMB-7D824	CAMB-7AD28
CAMB-7A159	CAMB-7B6E0	CAMB-7CC83	CAMB-7D97C	CAMB-7AD64
CAMB-7A405	CAMB-7BB3C	CAMB-7CE23	CAMB-7DB76	CAMB-7E841
CAMB-7A2FC	CAMB-7BB1E	CAMB-7ABE2	CAMB-7DAD3	CAMB-7EF88
CAMB-7A55D	CAMB-7BA7B	CAMB-784DA	CAMB-7DA3D	CAMB-7F057
CAMB-7A511	CAMB-7BA6C	CAMB-7CD35	CAMB-7DA6A	CAMB-7F01B
CAMB-7A4F6	CAMB-7B9C9	CAMB-7CD17	CAMB-7DA4C	CAMB-7EFF1
CAMB-7A5F3	CAMB-78328	CAMB-7CE41	CAMB-7DCEC	CAMB-7ADA0
CAMB-7A881	CAMB-7B914	CAMB-7CDAE	CAMB-7DCA0	CAMB-7F27F
CAMB-73B9E	CAMB-7B8F9	CAMB-7CD26	CAMB-7DBEF	CAMB-7F28E
CAMB-7A890	CAMB-7BCB1	CAMB-7CFA8	CAMB-7DBC1	CAMB-7F4A6
CAMB-7A7DF	CAMB-7BC1B	CAMB-789EA	CAMB-7DFA7	CAMB-7ACA3
CAMB-7A775	CAMB-7830A	CAMB-7CEC9	CAMB-7DF89	CAMB-7F46A

CAMB-7F619	CAMB-81483	CAMB-7C03C	CAMB-835CA	CAMB-82121
CAMB-7F576	CAMB-81438	CAMB-7C11B	CAMB-834CD	CAMB-820AC
CAMB-7F4F1	CAMB-813FF	CAMB-7C069	CAMB-8383A	CAMB-81F46
CAMB-7AB1F	CAMB-7B2A0	CAMB-8226A	CAMB-83779	CAMB-82103
CAMB-7AC49	CAMB-813E0	CAMB-8224C	CAMB-83885	CAMB-81FBF
CAMB-7AE07	CAMB-813C2	CAMB-82455	CAMB-836D6	CAMB-81EC1
CAMB-7AC0D	CAMB-81623	CAMB-823D0	CAMB-8369A	CAMB-82B23
CAMB-7ABF1	CAMB-7B1B2	CAMB-82507	CAMB-83A34	CAMB-82B6F
CAMB-7F79E	CAMB-7B1EF	CAMB-82482	CAMB-83991	CAMB-82AAE
CAMB-7AEDA	CAMB-7B2BF	CAMB-7C087	CAMB-839CE	CAMB-83CF2
CAMB-7AF8C	CAMB-81799	CAMB-82570	CAMB-83C98	CAMB-82A9F
CAMB-80A37	CAMB-7B2EC	CAMB-8266E	CAMB-842B3	CAMB-83D59
CAMB-809D0	CAMB-81711	CAMB-827D4	CAMB-8423B	CAMB-83D86
CAMB-80994	CAMB-817E4	CAMB-8275C	CAMB-841F2	CAMB-83D95
CAMB-80976	CAMB-817C6	CAMB-7C333	CAMB-84453	CAMB-83DD1
CAMB-7AA6D	CAMB-817A8	CAMB-7C315	CAMB-843FC	CAMB-83FF9
CAMB-806AC	CAMB-8178A	CAMB-828D1	CAMB-843DE	CAMB-83EED
CAMB-7B06A	CAMB-8174E	CAMB-8283B	CAMB-843B0	CAMB-83F17
CAMB-80897	CAMB-7B4C8	CAMB-82F72	CAMB-84365	CAMB-84013
CAMB-8090D	CAMB-8168D	CAMB-82E93	CAMB-84611	CAMB-84110
CAMB-80DB6	CAMB-81896	CAMB-82FAF	CAMB-845C9	CAMB-1ADFCB
CAMB-80CB9	CAMB-8185A	CAMB-82EA2	CAMB-845AB	CAMB-8413E
CAMB-80D89	CAMB-81984	CAMB-82DF0	CAMB-844EA	CAMB-8415C
CAMB-80D01	CAMB-81948	CAMB-82DD2	CAMB-1AA2D4	CAMB-8463F
CAMB-7B0F1	CAMB-7B3E9	CAMB-82D5A	CAMB-1AA2E3	CAMB-8467B
CAMB-7B10D	CAMB-8182D	CAMB-82DE1	CAMB-1AA2C5	CAMB-1ABF81
CAMB-80BAD	CAMB-81AFA	CAMB-830AB	CAMB-80EC2	CAMB-1ABF54
CAMB-80B43	CAMB-81AAF	CAMB-8313F	CAMB-7E2CB	CAMB-1ABF27
CAMB-80BDA	CAMB-819EE	CAMB-8307E	CAMB-7E2F8	CAMB-1AE2FE
CAMB-80B9E	CAMB-81C30	CAMB-83032	CAMB-1AA438	CAMB-1AE1A6
CAMB-80B52	CAMB-7B3DA	CAMB-832B4	CAMB-81140	CAMB-1AE0A9
CAMB-80B34	CAMB-81BAC	CAMB-83296	CAMB-7FEE4	CAMB-1AC050
CAMB-80E2C	CAMB-81B60	CAMB-832C3	CAMB-81131	CAMB-1AB76B
CAMB-811F5	CAMB-81D3D	CAMB-831E4	CAMB-7FE20	CAMB-1ABF90
CAMB-8131D	CAMB-7B55C	CAMB-7C209	CAMB-8118C	CAMB-1AC111
CAMB-815F9	CAMB-7C02D	CAMB-83418	CAMB-81E58	CAMB-1AE522
CAMB-814CF	CAMB-81D6A	CAMB-833DF	CAMB-810AD	CAMB-1AC06F
CAMB-814B0	CAMB-7C10C	CAMB-83445	CAMB-81FA0	CAMB-1AC08D
CAMB-81492	CAMB-8233A	CAMB-7C1EE	CAMB-82006	CAMB-1AC199
CAMB-81474	CAMB-7BF5E	CAMB-8357F	CAMB-82060	CAMB-1AE4CB

CAMB-1AE689	CAMB-1B1243	CAMB-79943	CAMB-80FFC
CAMB-1AD0AA	CAMB-1B1331	CAMB-7AD19	CAMB-81007
CAMB-1AE601	CAMB-1B1559	CAMB-7AE61	CAMB-81016
CAMB-1AC357	CAMB-1AF64C	CAMB-7B079	CAMB-81025
CAMB-1AF07B	CAMB-1B0059	CAMB-7B219	CAMB-81043
CAMB-1ACFEA	CAMB-1B150E	CAMB-7B2FB	CAMB-8222E
CAMB-1AF05D	CAMB-1B003B	CAMB-7C0A5	-
CAMB-1AD259	CAMB-1B1780	CAMB-7C0B4	-
CAMB-1AEF51	CAMB-1B0639	CAMB-7C0C3	-
CAMB-1AEF8E	CAMB-1B0AF1	CAMB-7C0D2	-
CAMB-1AD040	CAMB-1AA429	CAMB-7C1A2	-
CAMB-1AF293	CAMB-1AA447	CAMB-7C37F	-
CAMB-1AD6A8	CAMB-1AA465	CAMB-7E164	-
CAMB-1AD7B4	CAMB-1AAD2E	CAMB-7FB29	-
CAMB-1AD7A5	CAMB-1AAE49	CAMB-7FB47	-
CAMB-1AF864	CAMB-1AAE58	CAMB-7FB56	-
CAMB-1AD82A	CAMB-1AAE67	CAMB-7FB65	-
CAMB-1AD8DF	CAMB-1AAE94	CAMB-7FB74	-
CAMB-1AD909	CAMB-1AAEB2	CAMB-7FB83	-
CAMB-1B0402	CAMB-1AC005	CAMB-7FB92	-
CAMB-1ADAE8	CAMB-1AC014	CAMB-7FBA1	-
CAMB-1AD936	CAMB-1AC023	CAMB-7FBB0	-
CAMB-1AD7E1	CAMB-1AC041	CAMB-7FBCF	-
CAMB-1B0244	CAMB-1AC3C0	CAMB-7FBDE	-
CAMB-1AFA5F	CAMB-1AD8B1	CAMB-7FBED	-
CAMB-1ADB30	CAMB-1AE391	CAMB-7FBFC	-
CAMB-1AFB6B	CAMB-1AE3CE	CAMB-7FC08	-
CAMB-1AFD29	CAMB-1AEB6C	CAMB-7FC17	-
CAMB-1ADB5E	CAMB-1B05D2	CAMB-7FC26	-
CAMB-1AFE17	CAMB-1B05F0	CAMB-7FC35	-
CAMB-1ADBE5	CAMB-739D0	CAMB-7FC44	-
CAMB-1B099A	CAMB-73D01	CAMB-7FC53	-
CAMB-1B0851	CAMB-781A6	CAMB-7FC62	-
CAMB-1B08AC	CAMB-78407	CAMB-7FC80	-
CAMB-1B0077	CAMB-784BC	CAMB-7FC9F	-
CAMB-1AEBD5	CAMB-785C8	CAMB-7FCBD	-
CAMB-1ADC00	CAMB-78601	CAMB-7FD32	-
CAMB-1AED1B	CAMB-78838	CAMB-7FD6F	-
CAMB-1B12AD	CAMB-788ED	CAMB-80AFB	-
CAMB-1B000E	CAMB-79934	CAMB-80FDE	-

1 **COG-UK authors**

2 **Funding acquisition, leadership, supervision, metadata curation, project administration,**
3 **samples, logistics, Sequencing, analysis, and Software and analysis tools:**

4 Dr Thomas R Connor PhD^{33, 34}, and Professor Nicholas J Loman PhD¹⁵.

5

6 **Leadership, supervision, sequencing, analysis, funding acquisition, metadata curation,**
7 **project administration, samples, logistics, and visualisation:**

8 Dr Samuel C Robson Ph.D ⁶⁸.

9

10 **Leadership, supervision, project administration, visualisation, samples, logistics, metadata**
11 **curation and software and analysis tools:**

12 Dr Tanya Golubchik PhD ²⁷.

13

14 **Leadership, supervision, metadata curation, project administration, samples, logistics**
15 **sequencing and analysis:**

16 Dr M. Estee Torok FRCP ^{8, 10}.

17

18 **Project administration, metadata curation, samples, logistics, sequencing, analysis, and**
19 **software and analysis tools:**

20 Dr William L Hamilton PhD ^{8, 10}.

21

22 **Leadership, supervision, samples logistics, project administration, funding acquisition**
23 **sequencing and analysis:**

24 Dr David Bonsall PhD ²⁷.

25

26 **Leadership and supervision, sequencing, analysis, funding acquisition, visualisation and**
27 **software and analysis tools:**

28 Dr Ali R Awan PhD ⁷⁴.

29

30 **Leadership and supervision, funding acquisition, sequencing, analysis, metadata curation,**
31 **samples and logistics:**

32 Dr Sally Corden PhD ³³.

33

34 **Leadership supervision, sequencing analysis, samples, logistics, and metadata curation:**

35 Professor Ian Goodfellow PhD ¹¹.

36

37 **Leadership, supervision, sequencing, analysis, samples, logistics, and Project**
38 **administration:**

39 Professor Darren L Smith PhD ^{60, 61}.

40

41 **Project administration, metadata curation, samples, logistics, sequencing and analysis:**

42 Dr Martin D Curran PhD ¹⁴, and Dr Surendra Parmar PhD ¹⁴.

43

44 **Samples, logistics, metadata curation, project administration sequencing and analysis:**

45 Dr James G Shepherd MBChB MRCP ²¹.

46

- 1 **Sequencing, analysis, project administration, metadata curation and software and analysis**
2 **tools:**
3 Dr Matthew D Parker PhD ³⁸.
4
- 5 **Leadership, supervision, funding acquisition, samples, logistics, and metadata curation:**
6 Dr Catherine Moore³³.
7
- 8 **Leadership, supervision, metadata curation, samples, logistics, sequencing and analysis:**
9 Dr Derek J Fairley PhD ^{6,88}, Professor Matthew W Loose PhD ⁵⁴, and Joanne Watkins MSc ³³.
10
- 11 **Metadata curation, sequencing, analysis, leadership, supervision and software and**
12 **analysis tools:**
13 Dr Matthew Bull PhD³³, and Dr Sam Nicholls PhD ¹⁵.
14
- 15 **Leadership, supervision, visualisation, sequencing, analysis and software and analysis**
16 **tools:**
17 Professor David M Aanensen PhD ^{1,30}.
18
- 19 **Sequencing, analysis, samples, logistics, metadata curation, and visualisation:**
20 Dr Sharon Glaysher ⁷⁰.
21
- 22 **Metadata curation, sequencing, analysis, visualisation, software and analysis tools:**
23 Dr Matthew Bashton PhD ⁶⁰, and Dr Nicole Pacchiarini PhD ³³.
24
- 25 **Sequencing, analysis, visualisation, metadata curation, and software and analysis tools:**
26 Dr Anthony P Underwood PhD ^{1,30}.
27
- 28 **Funding acquisition, leadership, supervision and project administration:**
29 Dr Thushan I de Silva PhD ³⁸, and Dr Dennis Wang PhD ³⁸.
30
- 31 **Project administration, samples, logistics, leadership and supervision:**
32 Dr Monique Andersson PhD ²⁸, Professor Anoop J Chauhan ⁷⁰, Dr Mariateresa de Cesare
33 PhD²⁶, Dr Catherine Ludden ^{1,3}, and Dr Tabitha W Mahungu FRCPATH ⁹¹.
34
- 35 **Sequencing, analysis, project administration and metadata curation:**
36 Dr Rebecca Dewar PhD ²⁰, and Martin P McHugh MSc²⁰.
37
- 38 **Samples, logistics, metadata curation and project administration:**
39 Dr Natasha G Jesudason MBChB MRCP FRCPATH ²¹, Dr Kathy K Li MBBCh FRCPATH ²¹, Dr Rajiv
40 N Shah BMBS MRCP MSc ²¹, and Dr Yusri Taha MD, PhD ⁶⁶.
41
- 42 **Leadership, supervision, funding acquisition and metadata curation:**
43 Dr Kate E Templeton PhD ²⁰.
44
- 45 **Leadership, supervision, funding acquisition, sequencing and analysis:**
46 Dr Simon Cottrell PhD ³³, Dr Justin O'Grady PhD ⁵¹, Professor Andrew Rambaut DPhil ¹⁹, and

1 Professor Colin P Smith PhD⁹³.
2
3 **Leadership, supervision, metadata curation, sequencing and analysis:**
4 Professor Matthew T.G. Holden PhD ⁸⁷, and Professor Emma C Thomson PhD/FRCP ²¹.
5
6 **Leadership, supervision, samples, logistics and metadata curation:**
7 Dr Samuel Moses MD ^{81,82}.
8
9 **Sequencing, analysis, leadership, supervision, samples and logistics:**
10 Dr Meera Chand ⁷, Dr Chrystala Constantinidou PhD ⁷¹, Professor Alistair C Darby PhD ⁴⁶,
11 Professor Julian A Hiscox PhD ⁴⁶, Professor Steve Paterson PhD ⁴⁶, and Dr Meera
12 Unnikrishnan PhD ⁷¹.
13
14 **Sequencing, analysis, leadership and supervision and software and analysis tools:**
15 Dr Andrew J Page PhD ⁵¹, and Dr Erik M Volz PhD⁹⁶.
16
17 **Samples, logistics, sequencing, analysis and metadata curation:**
18 Dr Charlotte J Houldcroft PhD ⁸, Dr Aminu S Jahun PhD ¹¹, Dr James P McKenna PhD ⁸⁸, Dr
19 Luke W Meredith PhD ¹¹, Dr Andrew Nelson PhD ⁶¹, Sarojini Pandey MSc ⁷², and Dr Gregory R
20 Young PhD ⁶⁰.
21
22 **Sequencing, analysis, metadata curation, and software and analysis tools:**
23 Dr Anna Price PhD³⁴, Dr Sara Rey PhD ³³, Dr Sunando Roy PhD ⁴¹, Dr Ben Temperton Ph.D ⁴⁹,
24 and Matthew Wyles ³⁸.
25
26 **Sequencing, analysis, metadata curation and visualisation:**
27 Stefan Rooke MSc¹⁹, and Dr Sharif Shaaban PhD⁸⁷.
28
29 **Visualisation, sequencing, analysis and software and analysis tools:**
30 Dr Helen Adams PhD ³⁵, Dr Yann Bourgeois Ph.D ⁶⁹, Dr Katie F Loveson Ph.D ⁶⁸, Áine O'Toole
31 MSc¹⁹, and Richard Stark MSc ⁷¹.
32
33 **Project administration, leadership and supervision:**
34 Dr Ewan M Harrison PhD ^{1,3}, David Heyburn ³³, and Professor Sharon J Peacock ^{2,3}
35
36 **Project administration and funding acquisition:**
37 Dr David Buck PhD²⁶, and Michaela John BSc Hons ³⁶
38
39 **Sequencing, analysis and project administration:**
40 Dorota Jamrozy ¹, and Dr Joshua Quick PhD ¹⁵
41
42 **Samples, logistics, and project administration:**
43 Dr Rahul Batra MD⁷⁸, Katherine L Bellis BSc (Hons) ^{1,3}, Beth Blane BSc ³, Sophia T Girgis MSc
44 ³, Dr Angie Green PhD ²⁶, Anita Justice MSc ²⁸, Dr Mark Kristiansen PhD ⁴¹, and Dr Rachel J
45 Williams PhD ⁴¹.
46
47

1 **Project administration, software and analysis tools:**

2 Radoslaw Poplawski BSc ¹⁵.

3

4 **Project administration and visualisation:**

5 Dr Garry P Scarlett Ph.D⁶⁹.

6

7 **Leadership, supervision, and funding acquisition:**

8 Professor John A Todd PhD ²⁶, Dr Christophe Fraser PhD ²⁷, Professor Judith Breuer MD ^{40,41},
9 Professor Sergi Castellano PhD ⁴¹, Dr Stephen L Michell PhD ⁴⁹, Professor Dimitris
10 Gramatopoulos PhD, FRCPath⁷³, and Dr Jonathan Edgeworth PhD, FRCPath ⁷⁸.

11

12 **Leadership, supervision and metadata curation:**

13 Dr Gemma L Kay PhD ⁵¹.

14

15 **Leadership, supervision, sequencing and analysis:**

16 Dr Ana da Silva Filipe PhD ²¹, Dr Aaron R Jeffries PhD ⁴⁹, Dr Sascha Ott PhD ⁷¹, Professor
17 Oliver Pybus ²⁴, Professor David L Robertson PhD ²¹, Dr David A Simpson PhD ⁶, and Dr Chris
18 Williams MB BS³³.

19

20 **Samples, logistics, leadership and supervision:**

21 Dr Cressida Auckland FRCPath ⁵⁰, Dr John Boyes MBChB⁸³, Dr Samir Dervisevic FRCPath⁵²,
22 Professor Sian Ellard FRCPath^{49, 50}, Dr Sonia Goncalves¹, Dr Emma J Meader FRCPath ⁵¹, Dr
23 Peter Muir PhD², Dr Husam Osman PhD ⁹⁵, Reenesh Prakash MPH⁵², Dr Venkat Sivaprakasam
24 PhD¹⁸, and Dr Ian B Vipond PhD².

25

26 **Leadership, supervision and visualisation**

27 Dr Jane AH Masoli MBChB ^{49, 50}.

28

29 **Sequencing, analysis and metadata curation**

30 Dr Nabil-Fareed Alikhan PhD ⁵¹, Matthew Carlile BSc ⁵⁴, Dr Noel Craine DPhil ³³, Dr Sam T
31 Haldenby PhD ⁴⁶, Dr Nadine Holmes PhD ⁵⁴, Professor Ronan A Lyons MD ³⁷, Dr Christopher
32 Moore PhD ⁵⁴, Malorie Perry MSc ³³, Dr Ben Warne MRCP⁸⁰, and Dr Thomas Williams MD ¹⁹.

33

34 **Samples, logistics and metadata curation:**

35 Dr Lisa Berry PhD ⁷², Dr Andrew Bosworth PhD ⁹⁵, Dr Julianne Rose Brown PhD⁴⁰, Sharon
36 Campbell MSc ⁶⁷, Dr Anna Casey PhD¹⁷, Dr Gemma Clark PhD ⁵⁶, Jennifer Collins BSc ⁶⁶, Dr
37 Alison Cox PhD ^{43, 44}, Thomas Davis MSc ⁸⁴, Gary Eltringham BSc ⁶⁶, Dr Cariad Evans ^{38, 39}, Dr
38 Clive Graham MD ⁶⁴, Dr Fenella Halstead PhD ¹⁸, Dr Kathryn Ann Harris PhD ⁴⁰, Dr
39 Christopher Holmes PhD ⁵⁸, Stephanie Hutchings ², Professor Miren Iturriza-Gomara PhD ⁴⁶
40 , Dr Kate Johnson ^{38, 39}, Katie Jones MSc ⁷², Dr Alexander J Keeley MRCP ³⁸, Dr Bridget A
41 Knight PhD ^{49, 50}, Cherian Koshy MSc, CSci, FIBMS ⁹⁰, Steven Liggett ⁶³, Hannah Lowe MSc ⁸¹
42 , Dr Anita O Lucaci PhD ⁴⁶, Dr Jessica Lynch PhD MBChB ^{25, 29}, Dr Patrick C McClure PhD ⁵⁵,
43 Dr Nathan Moore MBChB ³¹, Matilde Mori BSc ^{25, 29, 32}, Dr David G Partridge FRCP, FRCPath
44 ^{38, 39}, Pinglawathee Madona ^{43, 44}, Hannah M Pymont MSc ², Dr Paul Anthony Randell
45 MBBCh ^{43, 44}, Dr Mohammad Raza ^{38, 39}, Felicity Ryan MSc ⁸¹, Dr Robert Shaw FRCPath ²⁸,
46 Dr Tim J Sloan PhD ⁵⁷, and Emma Swindells BSc ⁶⁵.

47

1 **Sequencing, analysis, Samples and logistics:**

2 Alexander Adams BSc³³, Dr Hibo Asad PhD³³, Alec Birchley MSc³³, Tony Thomas Brooks BSc
3 (Hons)⁴¹, Dr Giselda Bucca PhD⁹³, Ethan Butcher⁷⁰, Dr Sarah L Caddy PhD¹³, Dr Laura G
4 Caller PhD^{2,3,12}, Yasmin Chaudhry BSc¹¹, Jason Coombes BSc (HONS)³³, Michelle Cronin³³,
5 Patricia L Dyal MPhil⁴¹, Johnathan M Evans MSc³³, Laia Fina³³, Bree Gatica-Wilcox MPhil³³,
6 Dr Iliana Georgana PhD¹¹, Lauren Gilbert A-Levels³³, Lee Graham BSc³³, Danielle C Groves
7 BA³⁸, Grant Hall BSc¹¹, Ember Hilvers MPH³³, Dr Myra Hosmillo PhD¹¹, Hannah Jones³³,
8 Sophie Jones MSc³³, Fahad A Khokhar BSc¹³, Sara Kumziene-Summerhayes MSc³³,
9 George MacIntyre-Cockett BSc²⁶, Dr Rocio T Martinez Nunez PhD⁹⁴, Dr Caoimhe McKerr
10 PhD³³, Dr Claire McMurray PhD¹⁵, Dr Richard Myers⁷, Yasmin Nicole Panchbhaya BSc⁴¹,
11 Malte L Pinckert MPhil¹¹, Amy Plimmer³³, Dr Joanne Stockton PhD¹⁵, Sarah Taylor³³, Dr
12 Alicia Thornton⁷, Amy Trebes MSc²⁶, Alexander J Trotter MRes⁵¹, Helena Jane Tutill BSc⁴¹
13 ,Charlotte A Williams BSc⁴¹, Anna Yakovleva BSc¹¹ and Dr Wen C Yew PhD⁶².

14

15 **Sequencing, analysis and software and analysis tools:**

16 Dr Mohammad T Alam PhD⁷¹, Dr Laura Baxter PhD⁷¹, Olivia Boyd MSc⁹⁶, Dr Fabricia F.
17 Nascimento PhD⁹⁶, Timothy M Freeman MPhil³⁸, Lily Geidelberg MSc⁹⁶, Dr Joseph Hughes
18 PhD²¹, David Jorgensen MSc⁹⁶, Dr Benjamin B Lindsey MRCP³⁸, Dr Richard J Orton PhD²¹,
19 Dr Manon Ragonnet-Cronin PhD⁹⁶ Joel Southgate MSc^{33,34}, and Dr Sreenu Vattipally PhD²¹.

20

21 **Samples, logistics and software and analysis tools:**

22 Dr Igor Starinskij MSc MRCP²³.

23

24 **Visualisation and software and analysis tools:**

25 Dr Joshua B Singer PhD²¹, Dr Khalil Abudahab PhD^{1,30}, Leonardo de Oliveira Martins PhD⁵¹,
26 Dr Thanh Le-Viet PhD⁵¹, Mirko Menegazzo³⁰, Ben EW Taylor Meng^{1,30}, and Dr Corin A
27 Yeats PhD³⁰.

28

29 **Project Administration:**

30 Sophie Palmer³, Carol M Churcher³, Dr Alisha Davies³³, Elen De Lacy MSc³³, Fatima
31 Downing³³, Sue Edwards³³, Dr Nikki Smith PhD³⁸, and Dr Frances Bolt PhD^{44,45}.

32

33 **Leadership and supervision:**

34 Dr. Alex Alderton¹, Dr Matt Berriman¹, Ian G Charles⁵¹, Dr Nicholas Cortes MBChB³¹, Dr
35 Tanya Curran PhD⁸⁸, Prof John Danesh¹, Dr Sahar Eldirdiri MBBS, MSc FRCPATH⁸⁴, Dr Ngozi
36 Elumogo FRCPATH⁵², Prof Andrew Hattersley FRS^{49,50}, Professor Alison Holmes MD^{44,45}, Dr
37 Robin Howe³³, Dr Rachel Jones³³, Anita Kenyon MSc⁸⁴, Prof Robert A Kingsley PhD⁵¹,
38 Professor Dominic Kwiatkowski^{1,9}, Dr Cordelia Langford¹, Dr Jenifer Mason MBBS⁴⁸, Dr
39 Alison E Mather PhD⁵¹, Lizzie Meadows MA⁵¹, Dr Sian Morgan FRCPATH³⁶, Dr James Price
40 PhD^{44,45}, Trevor I Robinson MSc⁴⁸, Dr Giri Shankar³³, John Wain⁵¹, and Dr Mark A
41 Webber PhD⁵¹.

42

43 **Metadata curation:**

44 Dr Declan T Bradley PhD^{5,6}, Dr Michael R Chapman PhD^{1,3,4}, Dr Derrick Crooke²⁸, Dr David
45 Eyre PhD²⁸, Professor Martyn Guest PhD³⁴, Huw Gulliver³⁴, Dr Sarah Hoosdally²⁸, Dr
46 Christine Kitchen PhD³⁴, Dr Ian Merrick PhD³⁴, Siddharth Mookerjee MPH^{44,45}, Robert
47 Munn BSc³⁴, Professor Timothy Peto PhD²⁸, Will Potter⁵², Dr Dheeraj K Sethi MBBS⁵²,

1 Wendy Smith⁵⁶, Dr Luke B Snell MB BS^{75,94}, Dr Rachael Stanley PhD⁵², Claire Stuart⁵² and
2 Dr Elizabeth Wastenge MD²⁰.

3

4 **Sequencing and analysis:**

5 Dr Erwan Acheson PhD⁶, Safiah Afifi BSc³⁶, Dr Elias Allara MD PhD^{2,3}, Dr Roberto Amato¹,
6 Dr Adrienn Angyal PhD³⁸, Dr Elihu Aranday-Cortes PhD/DVM²¹, Cristina Ariani¹, Jordan
7 Ashworth¹⁹, Dr Stephen Attwood²⁴, Alp Aydin MSc⁵¹, David J Baker BEng⁵¹, Dr Carlos E
8 Balcazar PhD¹⁹, Angela Beckett MSc⁶⁸ Robert Beer BSc³⁶, Dr Gilberto Betancor PhD⁷⁶,
9 Emma Betteridge¹, Dr David Bibby⁷, Dr Daniel Bradshaw⁷, Catherine Bresner BSc(Hons)
10³⁴, Dr Hannah E Bridgewater PhD⁷¹, Alice Broos BSc (Hons)²¹, Dr Rebecca Brown PhD³⁸, Dr
11 Paul E Brown PhD⁷¹, Dr Kirstyn Bruncker PhD²², Dr Stephen N Carmichael PhD²¹, Jeffrey K.
12 J. Cheng MSc⁷¹, Dr Rachel Colquhoun DPhil¹⁹, Dr Gavin Dabrera⁷, Dr Johnny Debebe PhD
13⁵⁴, Eleanor Drury¹, Dr Louis du Plessis²⁴, Richard Eccles MSc⁴⁶, Dr Nicholas Ellaby⁷, Audrey
14 Farbos MSc⁴⁹, Ben Farr¹, Dr Jacqueline Findlay PhD⁴¹, Chloe L Fisher MSc⁷⁴, Leysa Marie
15 Forrest MSc⁴¹, Dr Sarah Francois²⁴, Lucy R. Frost BSc⁷¹, William Fuller BSc³⁴, Dr Eileen
16 Gallagher⁷, Dr Michael D Gallagher PhD¹⁹, Matthew Gemmell MSc⁴⁶, Dr Rachel AJ Gilroy
17 PhD⁵¹, Scott Goodwin¹, Dr Luke R Green PhD³⁸, Dr Richard Gregory PhD⁴⁶, Dr Natalie
18 Groves⁷, Dr James W Harrison PhD⁴⁹, Hassan Hartman⁷, Dr Andrew R Hesketh PhD⁹³, Verity
19 Hill¹⁹, Dr Jonathan Hubb⁷, Dr Margaret Hughes PhD⁴⁶, Dr David K Jackson¹, Dr Ben Jackson
20 PhD¹⁹, Dr Keith James¹, Natasha Johnson BSc (Hons)²¹, Ian Johnston¹, Jon-Paul Keatley¹, Dr
21 Moritz Kraemer²⁴, Dr Angie Lackenby⁷, Dr Mara Lawniczak¹, Dr David Lee⁷, Rich Livett¹,
22 Stephanie Lo¹, Daniel Mair BSc (Hons)²¹, Joshua Maksimovic FD sport science³⁶, Nikos
23 Manesis⁷, Dr Robin Manley Ph.D⁴⁹, Dr Carmen Manso⁷, Dr Angela Marchbank BSc³⁴, Dr
24 Inigo Martincorena¹, Dr Tamyo Mbisa⁷, Kathryn McCluggage MSc³⁶, Dr JT McCrone PhD¹⁹,
25 Shahjahan Miah⁷, Michelle L Michelsen BSc⁴⁹, Dr Mari Morgan PhD³³, Dr Gaia Nebbia
26 PhD, FRCPath⁷⁸, Charlotte Nelson MSc⁴⁶, Jenna Nichols BSc (Hons)²¹, Dr Paola Niola PhD⁴¹
27, Dr Kyriaki Nomikou PhD²¹, Steve Palmer¹, Dr. Naomi Park¹, Dr Yasmin A Parr PhD²¹, Dr
28 Paul J Parsons PhD³⁸, Vineet Patel⁷, Dr. Minal Patel¹, Clare Pearson MSc^{2,1}, Dr Steven Platt
29⁷, Christoph Puethe¹, Dr. Mike Quail¹, Dr Jayna Raghvani²⁴, Dr Lucille Rainbow PhD⁴⁶
30, Shavanthi Rajatileka¹, Dr Mary Ramsay⁷, Dr Paola C Resende Silva PhD^{41,42}, Steven Rudder
31⁵¹, Dr Chris Ruis³, Dr Christine M Sambles PhD⁴⁹, Dr Fei Sang PhD⁵⁴, Dr Ulf Schaefer⁷, Dr
32 Emily Scher PhD¹⁹, Dr. Carol Scott¹, Lesley Shirley¹, Adrian W Signell BSc⁷⁶, John Sillitoe¹
33, Christen Smith¹, Dr Katherine L Smollett PhD²¹, Karla Spellman FD³⁶, Thomas D Stanton
34 BSc¹⁹, Dr David J Studholme PhD⁴⁹, Ms Grace Taylor-Joyce BSc⁷¹, Dr Ana P Tedim PhD⁵¹
35, Dr Thomas Thompson PhD⁶, Dr Nicholas M Thomson PhD⁵¹, Scott Thurston¹, Lily Tong PhD
36²¹, Gerry Tonkin-Hill¹, Rachel M Tucker MSc³⁸, Dr Edith E Vamos PhD⁴, Dr Tetyana
37 Vasylyeva²⁴, Joanna Warwick-Dugdale BSc⁴⁹, Danni Weldon¹, Dr Mark Whitehead PhD⁴⁶
38, Dr David Williams⁷, Dr Kathleen A Williamson PhD¹⁹, Harry D Wilson BSc⁷⁶, Trudy Workman
39 HNC³⁴, Dr Muhammad Yasir PhD⁵¹, Dr Xiaoyu Yu PhD¹⁹, and Dr Alex Zarebski²⁴.

40

41 **Samples and logistics:**

42 Dr Evelien M Adriaenssens PhD⁵¹, Dr Shazaad S Y Ahmad MSc^{2,47}, Adela Alcolea-Medina
43 MPharm^{59,77}, Dr John Allan PhD⁶⁰, Dr Patawee Asamaphan PhD²¹, Laura Atkinson MSc⁴⁰,
44 Paul Baker MD⁶³, Professor Jonathan Ball PhD⁵⁵, Dr Edward Barton MD⁶⁴, Dr. Mathew A
45 Beale¹, Dr. Charlotte Beaver¹, Dr Andrew Beggs PhD¹⁶, Dr Andrew Bell PhD⁵¹, Duncan J
46 Berger¹, Dr Louise Berry⁵⁶, Claire M Bewshea MSc⁴⁹, Kelly Bicknell⁷⁰, Paul Bird⁵⁸, Dr Chloe
47 Bishop⁷, Dr Tim Boswell⁵⁶, Cassie Breen BSc⁴⁸, Dr Sarah K Buddenborg¹, Dr Shirelle Burton-

1 Fanning MD ⁶⁶, Dr Vicki Chalker ⁷, Dr Joseph G Chappell PhD ⁵⁵, Themoula Charalampous MSc
2 ^{78,94}, Claire Cormie³, Dr Nick Cortes PhD^{29, 25}, Dr Lindsay J Coupland PhD ⁵², Angela Cowell
3 MSc⁴⁸, Dr Rose K Davidson PhD ⁵³, Joana Dias MSc³, Dr Maria Diaz PhD⁵¹, Thomas Dibling¹,
4 Matthew J Dorman¹, Dr Nichola Duckworth⁵⁷, Scott Elliott⁷⁰, Sarah Essex⁶³, Karlie Fallon ⁵⁸,
5 Theresa Feltwell ⁸, Dr Vicki M Fleming PhD ⁵⁶, Sally Forrest BSc ³, Luke Foulser¹, Maria V
6 Garcia-Casado¹, Dr Artemis Gavriil PhD ⁴¹, Dr Ryan P George PhD⁴⁷, Laura Gifford MSc ³³,
7 Harmeet K Gill PhD³, Jane Greenaway MSc⁶⁵, Luke Griffith Bsc⁵³, Ana Victoria Gutierrez⁵¹, Dr
8 Antony D Hale MBBS⁸⁵, Dr Tanzina Haque FRCPath, PhD⁹¹, Katherine L Harper MBiol⁸⁵, Dr Ian
9 Harrison ⁷, Dr Judith Heaney PhD⁸⁹, Thomas Helmer ⁵⁸, Ellen E Higginson PhD ³, Richard
10 Hopes ², Dr Hannah C Howson-Wells PhD ⁵⁶, Dr Adam D Hunter ¹, Robert Impey ⁷⁰, Dr Dianne
11 Irish-Tavares FRCPath ⁹¹, David A Jackson¹, Kathryn A Jackson MSc ⁴⁶, Dr Amelia Joseph ⁵⁶,
12 Leanne Kane ¹, Sally Kay ¹, Leanne M Kermack MSc ³, Manjinder Khakh ⁵⁶, Dr Stephen P Kidd
13 PhD^{29, 25, 31}, , Dr Anastasia Kolyva PhD ⁵¹, Jack CD Lee BSc ⁴⁰, Laura Letchford ¹, Nick Levene
14 MSc⁷⁹, Dr LisaJ Levett PhD ⁸⁹, Dr Michelle M Lister PhD ⁵⁶, Allyson Lloyd ⁷⁰, Dr Joshua Loh
15 PhD⁶⁰, Dr Louissa R Macfarlane-Smith PhD⁸⁵, Dr Nicholas W Machin MSc ^{2, 47}, Mailis Maes
16 M.phil³, Dr Samantha McGuigan ¹, Liz McMinn ¹, Dr Lamia Mestek-Boukhibar D.Phil ⁴¹, Dr
17 Zoltan Molnar PhD ⁶, Lynn Monaghan ⁷⁹, Dr Catrin Moore ²⁷, Plamena Naydenova BSc ³,
18 Alexandra S Neaverson ¹, Dr. Rachel Nelson PhD ¹, Marc O Niebel MSc²¹, Elaine O'Toole BSc
19 ⁴⁸, Debra Padgett BSc ⁶⁴, Gaurang Patel ¹, Dr Brendan Al Payne MD ⁶⁶, Liam Prestwood ¹, Dr
20 Veena Raviprakash MD⁶⁷, Nicola Reynolds PhD⁸⁶ Dr Alex Richter PhD ¹⁶, Dr Esther Robinson
21 PhD⁹⁵, Dr Hazel A Rogers¹, Dr Aileen Rowan PhD ⁹⁶, Garren Scott BSc ⁶⁴, Dr Divya Shah PhD⁴⁰,
22 Nicola Sheriff BSc ⁶⁷, Dr Graciela Sluga MD - MSc⁹², Emily Souster¹, Dr. Michael Spencer-
23 Chapman¹, Sushmita Sridhar BSc^{1, 3}, Tracey Swingler ⁵³, Dr Julian Tang⁵⁸, Professor Graham P
24 Taylor DSc⁹⁶, Dr Theocharis Tsoleridis PhD⁵⁵, Dr Lance Turtle PhD MRCP⁴⁶, Dr Sarah Walsh ⁵⁷,
25 Dr Michelle Wantoch PhD ⁸⁶, Joanne Watts BSc⁴⁸, Dr Sheila Waugh MD⁶⁶, Sam Weeks⁴¹, Dr
26 Rebecca Williams BMBS ³¹, Dr Iona Willingham⁵⁶, Dr Emma L Wise PhD ^{25, 29, 31}, Victoria
27 Wright BSc ⁵⁴, Dr Sarah Wyllie ⁷⁰, and Jamie Young BSc ³.

28

29 **Software and analysis tools**

30 Amy Gaskin MSc³³, Dr Will Rowe PhD ¹⁵, and Dr Igor Siveroni PhD⁹⁶.

31

32 **Visualisation:**

33 Dr Robert Johnson PhD ⁹⁶.

34

35 **1** Wellcome Sanger Institute, **2** Public Health England, **3** University of Cambridge, **4** Health
36 Data Research UK, Cambridge, **5** Public Health Agency, Northern Ireland, **6** Queen's
37 University Belfast **7** Public Health England Colindale, **8** Department of Medicine, University
38 of Cambridge, **9** University of Oxford, **10** Departments of Infectious Diseases and
39 Microbiology, Cambridge University Hospitals NHS Foundation Trust; Cambridge, UK, **11**
40 Division of Virology, Department of Pathology, University of Cambridge, **12** The Francis Crick
41 Institute, **13** Cambridge Institute for Therapeutic Immunology and Infectious Disease,
42 Department of Medicine, **14** Public Health England, Clinical Microbiology and Public Health
43 Laboratory, Cambridge, UK, **15** Institute of Microbiology and Infection, University of
44 Birmingham, **16** University of Birmingham, **17** Queen Elizabeth Hospital, **18** Heartlands
45 Hospital, **19** University of Edinburgh, **20** NHS Lothian, **21** MRC-University of Glasgow Centre
46 for Virus Research, **22** Institute of Biodiversity, Animal Health & Comparative Medicine,
47 University of Glasgow, **23** West of Scotland Specialist Virology Centre, **24** Dept Zoology,

1 University of Oxford, **25** University of Surrey, **26** Wellcome Centre for Human Genetics,
2 Nuffield Department of Medicine, University of Oxford, **27** Big Data Institute, Nuffield
3 Department of Medicine, University of Oxford, **28** Oxford University Hospitals NHS
4 Foundation Trust, **29** Basingstoke Hospital, **30** Centre for Genomic Pathogen Surveillance,
5 University of Oxford, **31** Hampshire Hospitals NHS Foundation Trust, **32** University of
6 Southampton, **33** Public Health Wales NHS Trust, **34** Cardiff University, **35** Betsi Cadwaladr
7 University Health Board, **36** Cardiff and Vale University Health Board, **37** Swansea University,
8 **38** University of Sheffield, **39** Sheffield Teaching Hospitals, **40** Great Ormond Street NHS
9 Foundation Trust, **41** University College London, **42** Oswaldo Cruz Institute, Rio de Janeiro
10 **43** North West London Pathology, **44** Imperial College Healthcare NHS Trust, **45** NIHR Health
11 Protection Research Unit in HCAI and AMR, Imperial College London, **46** University of
12 Liverpool, **47** Manchester University NHS Foundation Trust, **48** Liverpool Clinical
13 Laboratories, **49** University of Exeter, **50** Royal Devon and Exeter NHS Foundation Trust, **51**
14 Quadram Institute Bioscience, University of East Anglia, **52** Norfolk and Norwich University
15 Hospital, **53** University of East Anglia, **54** Deep Seq, School of Life Sciences, Queens Medical
16 Centre, University of Nottingham, **55** Virology, School of Life Sciences, Queens Medical
17 Centre, University of Nottingham, **56** Clinical Microbiology Department, Queens Medical
18 Centre, **57** PathLinks, Northern Lincolnshire & Goole NHS Foundation Trust, **58** Clinical
19 Microbiology, University Hospitals of Leicester NHS Trust, **59** Viapath, **60** Hub for
20 Biotechnology in the Built Environment, Northumbria University, **61** NU-OMICS
21 Northumbria University, **62** Northumbria University, **63** South Tees Hospitals NHS
22 Foundation Trust, **64** North Cumbria Integrated Care NHS Foundation Trust, **65** North Tees
23 and Hartlepool NHS Foundation Trust, **66** Newcastle Hospitals NHS Foundation Trust, **67**
24 County Durham and Darlington NHS Foundation Trust, **68** Centre for Enzyme Innovation,
25 University of Portsmouth, **69** School of Biological Sciences, University of Portsmouth, **70**
26 Portsmouth Hospitals NHS Trust, **71** University of Warwick, **72** University Hospitals Coventry
27 and Warwickshire, **73** Warwick Medical School and Institute of Precision Diagnostics,
28 Pathology, UHCW NHS Trust, **74** Genomics Innovation Unit, Guy's and St. Thomas' NHS
29 Foundation Trust, **75** Centre for Clinical Infection & Diagnostics Research, St. Thomas'
30 Hospital and Kings College London, **76** Department of Infectious Diseases, King's College
31 London, **77** Guy's and St. Thomas' Hospitals NHS Foundation Trust, **78** Centre for Clinical
32 Infection and Diagnostics Research, Department of Infectious Diseases, Guy's and St
33 Thomas' NHS Foundation Trust, **79** Princess Alexandra Hospital Microbiology Dept. , **80**
34 Cambridge University Hospitals NHS Foundation Trust, **81** East Kent Hospitals University NHS
35 Foundation Trust, **82** University of Kent, **83** Gloucestershire Hospitals NHS Foundation Trust,
36 **84** Department of Microbiology, Kettering General Hospital, **85** National Infection Service,
37 PHE and Leeds Teaching Hospitals Trust, **86** Cambridge Stem Cell Institute, University of
38 Cambridge, **87** Public Health Scotland, **88** Belfast Health & Social Care Trust, **89** Health
39 Services Laboratories, **90** Barking, Havering and Redbridge University Hospitals NHS Trust,
40 **91** Royal Free NHS Trust, **92** Maidstone and Tunbridge Wells NHS Trust, **93** University of
41 Brighton, **94** Kings College London, **95** PHE Heartlands, **96** Imperial College London.
42