

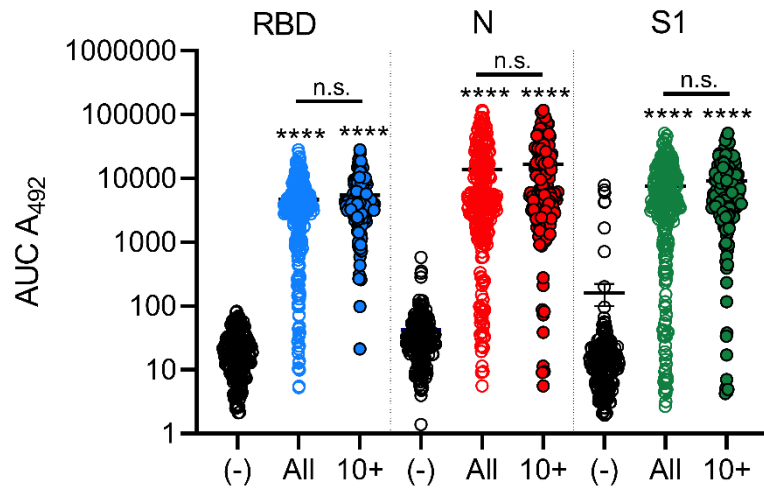
1 **Supplementary Table 1 | Demographics of evaluated patient samples.** Age, sex
2 (proportion of female patients), patient outcome (proportion of surviving patients), and
3 SARS-Cov-2 status of patient samples tested in this study.

Demographics	Age (yrs)	Sex (F/M)	Outcome (S/D)	SARS-CoV-2 (+/-)
Average	66.68	0.34	0.74	0.53
SD	16.86			
Sample n	490	490	490	489
Patient n	82	82	82	82

4

Supplementary Table 2 | Accuracy of SARS-CoV-2 rapid-ELISA assay. Positive predictive value (PPV) or negative predictive value (NPV) were calculated for the rapid-ELISA technique of samples 10+ days post-infection. Positivity was assigned to samples that exhibited anti-N and anti-RBD antibody production.

True (+)	False (+)	True (-)	False (-)
196	0	51	1
Total Samples	247		
PPV	99.5%		
NPV	100%		



6

7 **Supplementary Figure 1 | Rapid-ELISA results of all days post-symptom onset vs.**

8 **days 11+.** Mean antibody responses of all patient samples (All) were compared to mean

9 antibody responses occurring after ten days post-infection (10+). Anti-SARS-Cov-2 IgG

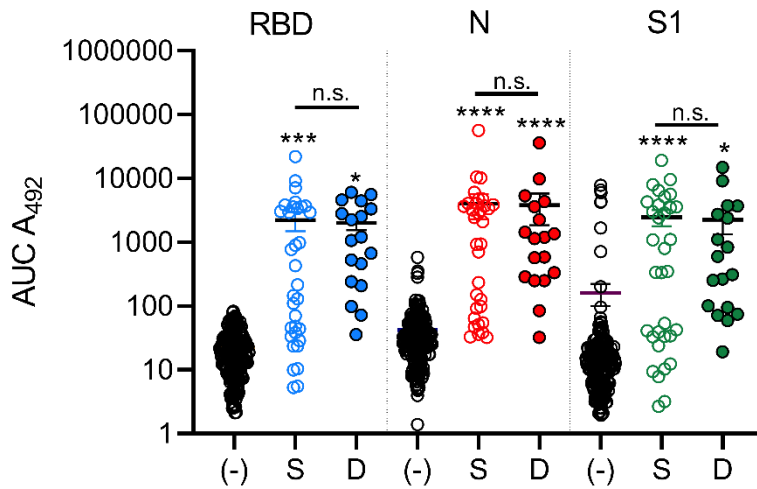
10 responses were not significantly different between all samples and samples ten days after

11 infection for all antigens. Both sample groups were significantly different than negative

12 SARS-CoV-2 patients (-). Statistical analysis was assessed by one-way ANOVA followed

13 by Sidak's multiple comparison test. **** = $p < 0.0001$ compared to negatives (-). n.s. = not

14 significant between All and 10+ groups.



15

16 **Supplementary Figure 2 | Early antibody responses of SARS-CoV-2 patients do not**

17 **differ based on patient outcome.** Anti-SARS-CoV-2 IgG responses during the first ten

18 days of infection were measure for patients surviving (S), or not surviving (D) SARS-Cov-

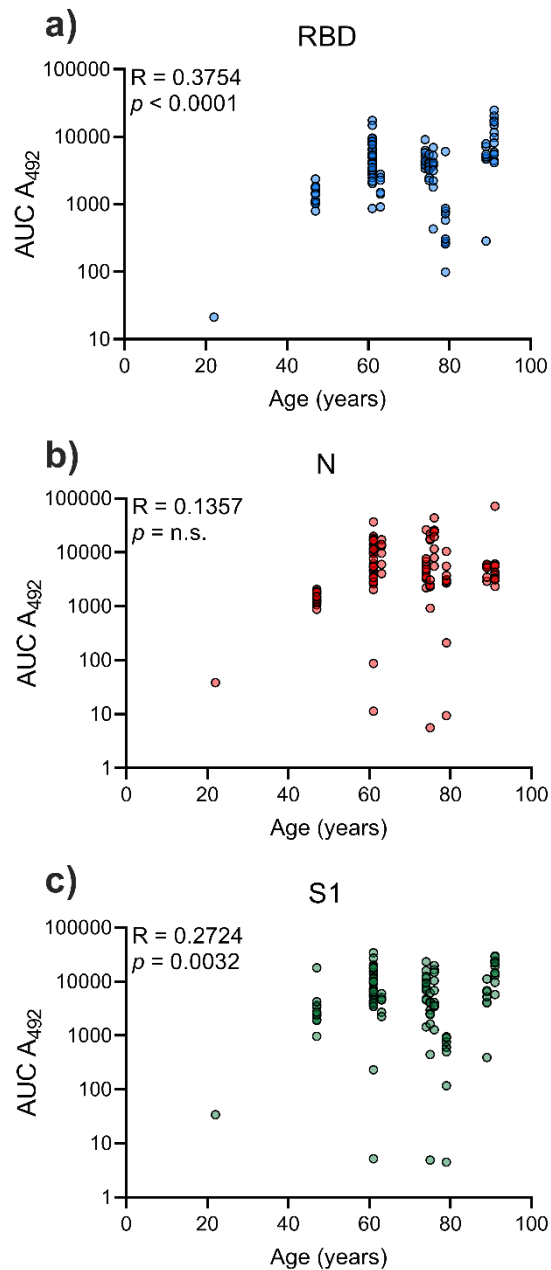
19 2 infection. Both samples were significantly different than patients that did not have

20 SARS-CoV-2 infection (-). Statistical analysis was assessed by one-way ANOVA followed

21 by Sidak's multiple comparison test. * = $p < 0.05$ compared to negatives, **** = $p < 0.0001$

22 compared to negatives (-). n.s. = not significant between S and D groups.

23



24

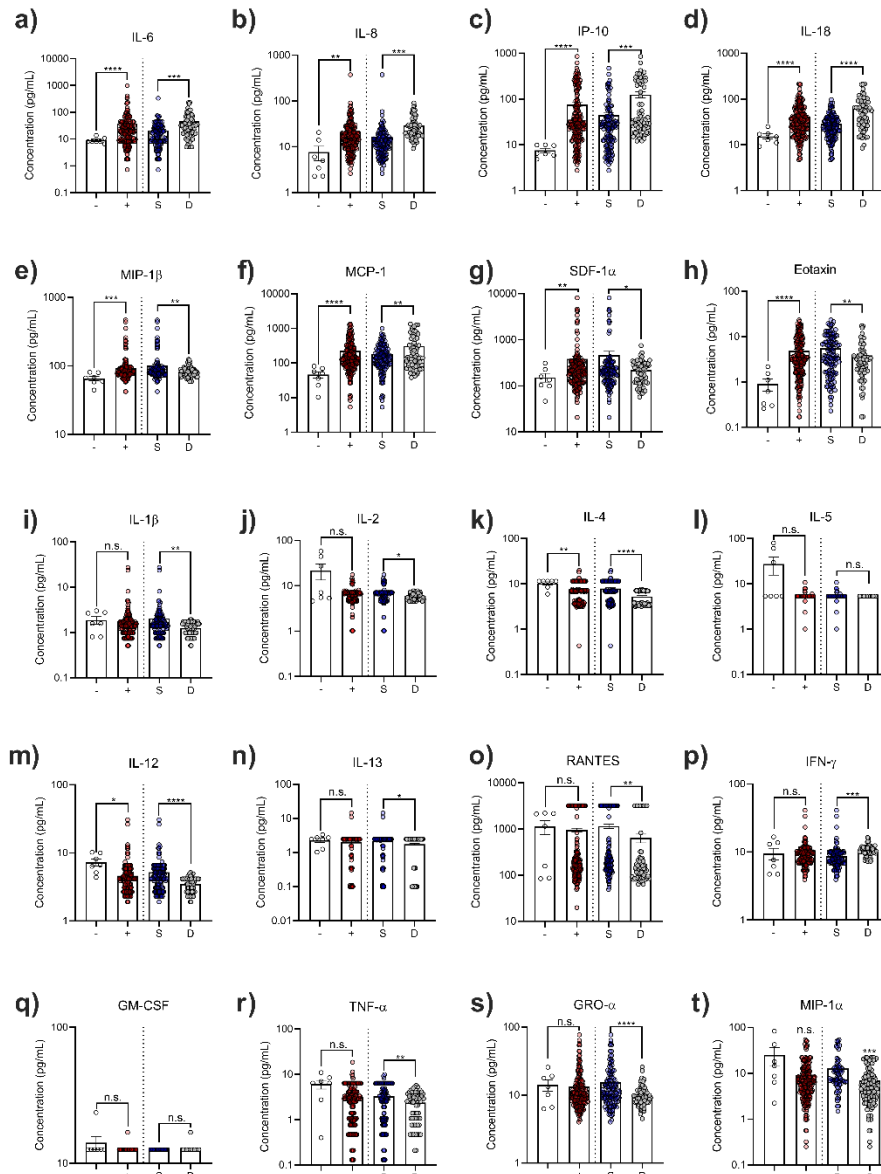
25 **Supplementary Figure 3 | Anti-SARS-CoV-2 antibody response correlates directly**

26 **with age.** IgG production to RBD (A), N (B), or S1 (C) or surviving SARS-CoV-2 positive

27 patients as correlated to their age in years. Correlation was assessed by calculating

28 Pearson correlation coefficients.

29



30

31 **Supplementary Figure 4 | Cytokine response to SARS-CoV-2 infection.**

32 Concentration of (A) IL-6, (B) IL-8, (C) IP-10, (D) IL-18, (E) MIP-1 β , (F) MCP-1, (G) SDF-

33 1 α , (H) eotaxin, (I) IL-1 β , (J) IL-2, (K) IL-4, (L) IL-5, (M) IL-12, (N) IL-13, (O) RANTES, (P)

34 IFN- γ , (Q) GM-CSF, (R) TNF- α , (S) GRO- α , and (T) MIP-1 α in patient plasma samples. -

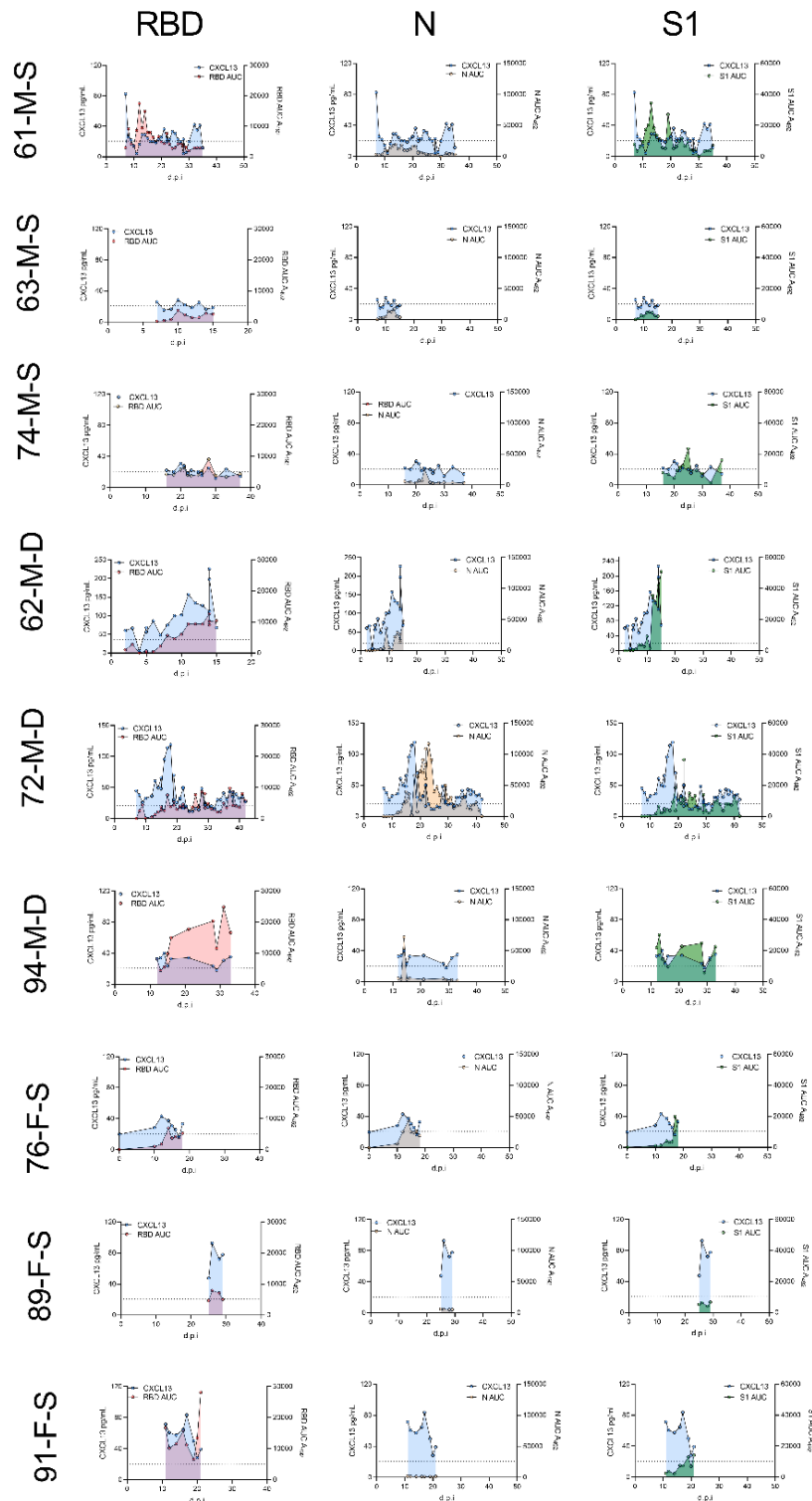
35 = SARS-CoV-2 negative patients, + = SARS-CoV-2 positive patients, S = SARS-CoV-2+

36 patients that survived infection, D = SARS-CoV-2+ patients that did not survive infection.

37 Statistical significance was assessed with a two-tailed Welch's t-test. * = $p < 0.05$, ** =

38 $p < 0.01$ *** = $p < 0.001$, **** = $p < 0.0001$, n.s. = not significant.

39



40

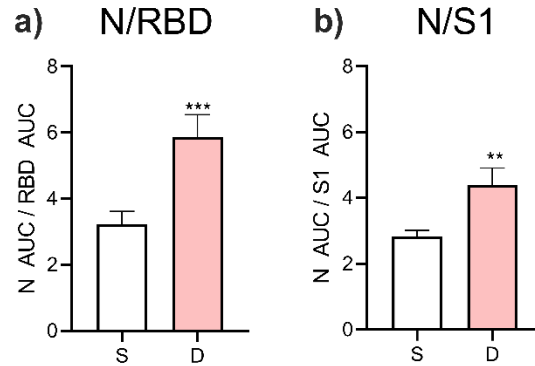
41

Supplementary Figure 5 | CXCL13 production by SARS-CoV-2 patients. CXCL13

42

production by SARS-CoV-2 production is compared to anti-RBD, anti-N, or anti-S IgG

- 43 quantity over the course of patient disease. Patient age, sex, and status (S = survived,
- 44 D = deceased) are represented left of the patient data.



45

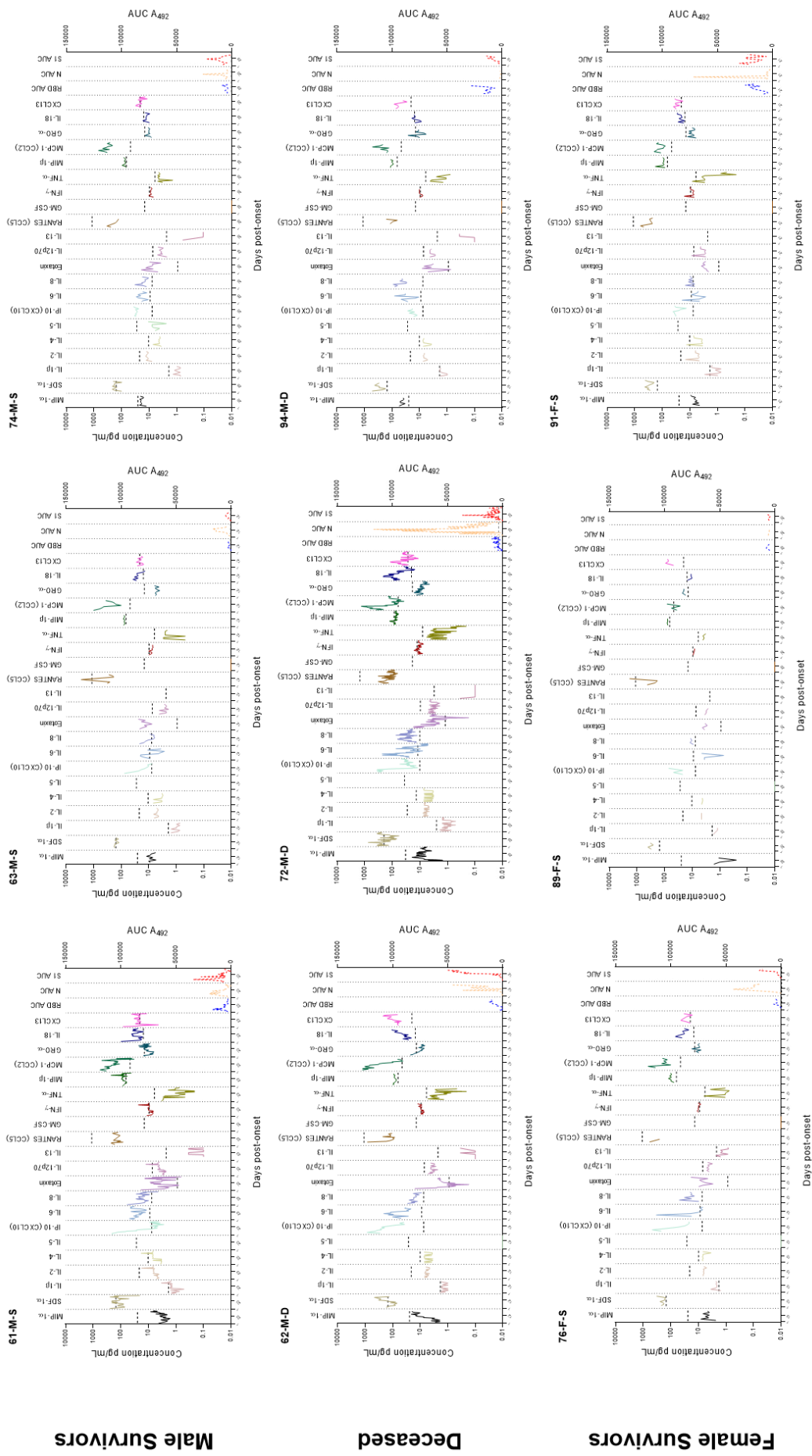
46 **Supplementary Figure 6 | N/RBD or N/S1 ratios are associated with disease**

47 **severity.** The anti-nucleocapsid AUC was divided by either the (A) anti-RBD AUC or (B)

48 anti-S1 AUC of patient samples grouped by whether they survived (S) or did not survived

49 (D) SARS-CoV-2 infection. Statistical significance was assessed with a two-tailed Welch's

50 t-test. ** = $p < 0.01$, *** = $p < 0.001$.



Supplementary Figure 7 | Cytokine profile over time of patients infected with SARS-CoV-2. Cytokine production was plotted over time for all cytokines quantified in this study (left y-axis, solid lines) in addition to anti-SARS-CoV-2 antibody production (right y-axis, dashed lines) for a representative series of patients. Patient age, sex, and status (S = survived, D = deceased) are represented top-left of the patient data.

