

SUPPLEMENTAL MATERIALS

Cohort description

Data came from the Avon Longitudinal Study of Parents and Children (ALSPAC), a prospective, longitudinal birth cohort of children born to mothers who were living in the county of Avon England (120 miles west of London) with estimated delivery dates between April 1991 and December 1992. ALSPAC was designed to identify the determinants of health across the lifespan, with an emphasis on genetic and environmental factors. The initial number of pregnancies enrolled is 14,541 (for these at least one questionnaire has been returned or a “Children in Focus” clinic had been attended by 19/07/99). Of these initial pregnancies, there was a total of 14,676 fetuses, resulting in 14,062 live births and 13,988 children who were alive at 1 year of age. When the oldest children were approximately 7 years old, an attempt was made to bolster the initial sample with eligible cases who had failed to join the study originally, resulting in an additional 913 children being enrolled. As such, the total sample size for analyses using any data collected after the age of seven is therefore 15,454 pregnancies, resulting in 15,589 fetuses. Of these 14,901 were alive at 1 year of age. The ALSPAC website contains details of all the data that is available through a fully searchable data dictionary and variable search tool: www.bristol.ac.uk/alspac/researchers/our-data/. Ethical approval for the study was obtained from the ALSPAC Ethics and Law Committee and the Local Research Ethics Committee. Informed consent for the use of data collected via questionnaires and clinics was obtained from participants following the recommendations of the ALSPAC Ethics and Law Committee at the time.

Genotyping, quality control, and imputation

We performed standard quality control measures to exclude youths on the basis of gender mismatch, minimal or excessive heterozygosity, individual genotyping call rates < 97%, insufficient sample replication (IBD<0.8), cryptic relatedness (IBD>0.1), and non-European ancestry (assessed using multidimensional scaling analysis and compared to HapMap II, release 22). For the current analyses, we further excluded 21 youths who self-reported as non-whites. We excluded genotyped SNPs based on the following criteria: minor allele frequency <1%; missing rate >5%; and significant deviation from Hardy-Weinberg Equilibrium ($p < 1e-7$). We conducted imputation using Impute V2.2.2 against the 1000 genomes reference panel (Phase 1, version 3), with 2,186 reference haplotypes including non-Europeans (Abecasis et al., 2012; Marchini, Howie, Myers, McVean, & Donnelly, 2007).

Confirmatory factor analysis of the growth mixture modeling with structured residuals

As noted in the main text, we used confirmatory factor analysis to combine information across all questionnaire items into a single factor score estimate representing the latent cause of their shared variability, which we interpreted as *depressive* symptoms (Hawrilenko, Masyn, Cerutti, & Dunn, 2020; Kline, 2015). Preliminary measurement invariance analyses revealed that some items changed over time due to non-depression-related factors, suggesting scalar non-invariance. We accounted for this scalar non-invariance by combining items into parcels (meaning, the averaged subsets of items) with internally consistent patterns of scalar non-invariance; we also released scalar constraints on the non-invariant waves, allowing the non-invariant parcels to contribute to factor score information within each wave, but not to changes in factor scores across waves (Little, Cunningham, Shahar, & Widaman, 2002). Standardized factor loadings were moderate to strong for items representing emotional difficulties (range: 0.61 to 0.81) and in

the moderate range for peer difficulties (range: 0.39 to 0.55). Full details of the measurement invariance analyses can be found in the technical supplement for Hawrilenko and colleagues, 2020 (*Child Development*).

Polygenic risk score (PRS) generation and selection

Prior to score construction, we performed additional genomic quality control procedures by removing imputed SNPs with imputation quality metric score <0.8 , MAF $<1\%$, call rate $<95\%$, and HWE $p < 1e-6$. SNPs were then pruned for linkage disequilibrium using p-value informed clump-based pruning in PLINK v1.90 ($r^2=0.25$ within a 250kb window). We created the PRS in PLINK v.1.07, using methods described by Purcell et al., where the PRS for each youth was the sum of the risk alleles (0, 1, or 2) for each SNP at a given p-value threshold weighted by the logarithm of its odds ratio (OR) for MDD in the PGC GWAS (Purcell et al., 2007). Using the summary statistics from Howard et al., 2019 (PGC-MDD2, UK Biobank, 23andme) as the discovery sample and the ALSPAC cohort as the training sample, we selected independent subsets of SNPs from GWAS summary data at 10 GWAS significance thresholds (p_T), 0.0001, 0.001, 0.01, 0.05, 0.1, 0.2, 0.3, 0.4, 0.5, and 1. We standardized all PRS prior to analysis so that all reported ORs could be interpreted as a one standard deviation increase in the score. As the PRS with $p_T < 0.1$ explained the most phenotypic variance in the analytic sample compared to the other scores (Wald omnibus value = 45.8; Chi-squared p-value $< 1e-4$; **Figure S6**), we focused on the results from this ‘best model fit’ score.

Modal class assignment in the MAGMA analysis

Modal class assignments were used in the gene-level MAGMA analysis, as to our knowledge, no

existing software tools currently exist to account for measurement error/classification uncertainty inherent to GMM in genome-wide analyses. To this end, participants were assigned to latent classes based on posterior probabilities of their membership in each latent class, calculated from their observed data and the latent class model parameters. Each youth had probabilities summing to 100%, reflecting their probability of assignment to each of the 6 latent classes. To assign a modal class to each individual, we selected the latent class with the highest probability. Using this approach, the average modal class probability (i.e., the highest probability class for each individual) across all individuals was 76% (SD = 18%; **Figure S2**). With this approach, the number of youths assigned to each trajectory class was estimated as follows: 4,146 minimal symptoms (56.7%), 182 adolescent spike (2.5%), 222 late childhood peak (3%), 440 childhood decrease (6%), 423 high/reversing (5.8%), and 1,895 high/renitent (25.9%). Although modal-class assignment may lead to lower standard errors to or overly-optimistic inferential tests, point estimates remained unbiased (Vermunt, 2017). We also note that modal class proportions are slightly different from the model-estimated proportions reported in Figure 1, as they do not take into account the “second place” and “third place” class assignments for each individual (Hawrilenko et al., 2020).

Sensitivity analyses of class assignment in the MAGMA analyses

We performed additional analyses in MAGMA using trajectories classes. First, we performed a case/control analysis on individuals in the high/renitent and minimal symptoms class who had a modal class probability equal to or greater than 80%. This threshold resulted in 786 youths in the high/renitent class and 2,258 youths in the minimal symptoms class (Figure S9). Second, we performed an analysis on continuous probabilities for the high/renitent class across all

individuals (0-100%) (Figure S8).

Author contributions

AAL analyzed the data, compiled the results, and wrote the manuscript. MH performed the analyses in MPlus. MW generated the polygenic risk scores. KC and JC helped with writing and interpretation of findings. YZ helped with data analysis of the ALSPAC cohort. ECD helped write the manuscript and compile the results. All authors provided critical feedback at all stages of the manuscript.

References

- Abecasis, G. R., Auton, A., Brooks, L. D., DePristo, M. A., Durbin, R. M., Handsaker, R. E., Kang, H. M., et al. (2012). An integrated map of genetic variation from 1,092 human genomes. *Nature*, *491*(7422), 56–65.
- Hawrilenko, M., Masyn, K. E., Cerutti, J. K., & Dunn, E. C. (2020). Individual differences in the course of youth depression: The importance of renitence and reversion. *medRxiv*, 19012872. Retrieved from <http://medrxiv.org/content/early/2019/11/27/19012872.abstract>
- Kline, R. B. (2015). *Principles and Practice of Structural Equation Modeling, Fourth Edition*. Methodology in the Social Sciences. Guilford Publications. Retrieved from <https://books.google.com/books?id=Q61ECgAAQBAJ>
- Little, T. D., Cunningham, W. A., Shahar, G., & Widaman, K. F. (2002). To Parcel or Not to Parcel: Exploring the Question, Weighing the Merits. *Structural Equation Modeling: A Multidisciplinary Journal*, *9*(2), 151–173. Routledge. Retrieved from https://doi.org/10.1207/S15328007SEM0902_1
- Marchini, J., Howie, B., Myers, S., McVean, G., & Donnelly, P. (2007). A new multipoint

method for genome-wide association studies by imputation of genotypes. *Nat Genet*, 39(7), 906–913. Retrieved from <http://www.ncbi.nlm.nih.gov/pubmed/17572673>

Purcell, S., Neale, B., Todd-Brown, K., Thomas, L., Ferreira, M. A., Bender, D., Maller, J., et al. (2007). PLINK: a tool set for whole-genome association and population-based linkage analyses. *Am J Hum Genet*, 81(3), 559–575. Retrieved from <http://www.ncbi.nlm.nih.gov/pubmed/17701901>

Vermunt, J. K. (2017). Latent Class Modeling with Covariates: Two Improved Three-Step Approaches. *Political Analysis*, 18(4), 450–469. Cambridge University Press. Retrieved from <https://www.cambridge.org/core/article/latent-class-modeling-with-covariates-two-improved-threestep-approaches/7DEF387D6ED4CF0A26A2FA06F9470D02>

SUPPLEMENTAL TABLES

Table S1. Summary of the analytical subsample from the ALSPAC cohort

	Original Sample (N=15445) n (%)	Analytic Sample (N=7,308) n (%)	Original vs. Analytic χ^2 p-value
Sex			
Males	7542 (51.3)	3707 (50.7)	0.151
Females	7152 (48.7)	3601 (49.3)	
Race			
Non-white	611 (5.1)	0 (0)	<0.001
White	11488 (94.9)	6639 (100.0)	
Age of Mother at Child's Birth			
Ages 15-19	650 (4.6)	142 (2.0)	<0.001
Ages 20-35	12363 (88.4)	6281 (89.8)	
Age 36+	968 (6.9)	575 (8.2)	
Parental Social Class			
Professional	1419 (9.6)	942 (12.9)	<0.001
Managerial and technical	4288 (29.0)	2583 (35.3)	
Skilled, non-manual	2623 (17.8)	1456 (19.9)	
Skilled, manual	909 (6.2)	438 (6.0)	
Semi-skilled, manual	270 (1.8)	125 (1.7)	
Unskilled, manual/other	5254 (35.6)	1764 (24.1)	
Number of previous pregnancies			
0	5800 (44.7)	3045 (44.9)	<0.001
1	4550 (35.0)	2480 (36.6)	
2	1860 (14.3)	921 (13.6)	
3+	772 (5.9)	330 (4.9)	
Birth weight (g)			
< 3000	3649 (24.8)	1572 (21.5)	<0.001
3000 - 3499	4924 (33.5)	2446 (33.5)	
3500 - 3999	4382 (29.8)	2338 (32.0)	
>= 4000	1735 (11.8)	952 (13.0)	
Maternal Education			
less than O-level	3735 (30.0)	1575 (23.3)	<0.001
O-level	4303 (34.6)	2366 (35.1)	
A-level	2795 (22.5)	1724 (25.5)	
Degree or Above	1603 (12.9)	1084 (16.1)	
Maternal Marital Status			
Never Married	2522 (19.2)	950 (13.9)	<0.001

Widowed/Divorced/Separated	787 (6.0)	364 (5.3)
Married	9838 (74.8)	5529 (80.8)

Table S2. Means, standard deviations, and correlations for study variables

Variable	n (% non- missing)	M	SD	Min/Max	1	2	3	4	5	6	7
1. Dep. 3.9 years	6054 (82.8)	0.75	0.30	0.13/1.88	---	---	---	---	---	---	---
2. Dep. 6.8 years	5644 (77.2)	0.76	0.35	0.05/1.99	0.79	---	---	---	---	---	---
3. Dep.8.1 years	5414 (74.1)	0.83	0.36	0.07/2.05	0.71	0.90	---	---	---	---	---
4. Dep.9.6 years	5632 (77.1)	0.75	0.38	0.00/2.00	0.63	0.83	0.87	---	---	---	---
5. Dep.11.7 years	5275 (72.2)	0.73	0.39	0.06/2.17	0.54	0.75	0.78	0.83	---	---	---
6. Dep.13.1 years	5099 (69.8)	0.73	0.40	0.04/2.20	0.54	0.73	0.74	0.79	0.85	---	---
7. Dep. 16.5 years	4167 (57.0)	0.74	0.40	0.02/2.24	0.51	0.65	0.69	0.68	0.72	0.77	---
8. Child PRS	7308 (100.0)*	0.00	1.00	4.24/3.48	0.06	0.09	0.09	0.09	0.10	0.10	0.10

Note. M = Mean. SD = Standard Deviation. Dep = Depression. PRS = Polygenic Risk Score. Participants were included in the count of non-missing if they had at least one complete parcel of the SDQ or SMFQ. *Child PRS was non-missing by definition, as all participants with missing PRS were excluded.

Table S3. Growth parameters for the unconditional six-class growth mixture model with structured residuals

Parameter	Latent Class					
	Minimal Symptoms	Adolescent Spike	Late Childhood Peak	Childhood Decrease	High and Reversing	High and Relentless
Means						
Intercept	0.61 (0.008)	0.78 (0.03)	0.68 (0.03)	1.03 (0.03)	0.84 (0.05)	0.91 (0.02)
Slope	-0.23 (0.04)	-0.28 (0.19)	0.90 (0.19)	0.09 (0.18)	0.62 (0.17)	0.68 (0.06)
Quadratic	0.59 (0.12)	1.81 (0.97)	-3.30 (0.80)	-2.39 (0.48)	-0.22 (0.84)	-0.89 (0.23)
Cubic	-0.70 (0.14)	-3.01 (1.20)	4.82 (0.80)	2.45 (0.48)	-0.74 (1.03)	0.39 (0.25)
Quartic	0.26 (0.05)	1.41 (0.43)	-2.01 (0.34)	-0.69 (0.16)	0.41 (0.36)	-0.06 (0.09)
Structured Residual	0.43 (0.04)	0.42 (0.17)	-0.49 (0.05)	0.15 (0.09)	-0.41 (0.03)	0.87 (0.01)
Area under the curve	0.87 (0.004)	1.27 (0.03)	1.34 (0.02)	1.09 (0.01)	1.44 (0.02)	1.61 (0.006)
Variances*						
Intercept	0.042 (0.002)	0.042 (0.002)	0.042 (0.002)	0.042 (0.002)	0.042 (0.002)	0.042 (0.002)
Linear Slope	0.013 (0.001)	0.013 (0.001)	0.013 (0.001)	0.013 (0.001)	0.013 (0.001)	0.013 (0.001)

Note. *Linear time was coded as months divided by 100 and higher order time transformations were based off of that. Variances were constrained equal across latent classes. Quadratic and higher order variances were constrained to zero within each class.

Table S4. Sensitivity analysis examining difference in PRS effects when controlling for mother's PRS score

Comparison		Child PRS Only (N = 5311)		Model Includes Mother PRS Scores (N = 5311)				Difference Between Models	
		<u>Child Effects</u>		<u>Child Effects</u>		<u>Mother Effects</u>		Change in child log odds (raw)	Change in child log odds (%)
Reference Category	Alternative Category	Log Odds	SE	Log Odds	SE	Log Odds	SE		
Minimal Symptoms	Adolescent Spike	0.14	0.11	0.13	0.12	0.03	0.10	-0.02	-10%
Minimal Symptoms	Late Childhood Peak	0.21[#]	0.10	0.15	0.12	0.12	0.13	-0.06	-30%
Minimal Symptoms	Childhood Decrease	0.08	0.08	0.07	0.09	0.02	0.09	-0.01	-14%
Minimal Symptoms	High and Reversing	0.22*	0.08	0.16	0.10	0.12	0.08	-0.06	-28%
Minimal Symptoms	High and Renitent	0.24*	0.05	0.16*	0.06	0.16	0.06	-0.08	-35%
Adolescent Spike	Late Childhood Peak	0.07	0.15	0.02	0.16	0.09	0.16	-0.05	-70%
Adolescent Spike	Childhood Decrease	-0.06	0.13	-0.06	0.15	-0.01	0.13	0.00	-6%
Adolescent Spike	High and Reversing	0.07	0.13	0.03	0.15	0.09	0.12	-0.05	-62%
Adolescent Spike	High and Renitent	0.10	0.12	0.03	0.13	0.13	0.11	-0.07	-69%
Late Childhood Peak	Childhood Decrease	-0.13	0.12	-0.08	0.14	-0.11	0.14	0.05	-39%
Late Childhood Peak	High and Reversing	0.01	0.13	0.01	0.14	-0.01	0.14	0.00	0%
Late Childhood Peak	High and Renitent	0.03	0.11	0.01	0.13	0.04	0.13	-0.02	-69%
Childhood Decrease	High and Reversing	0.14	0.11	0.09	0.12	0.10	0.11	-0.05	-36%

Childhood Decrease	High and Renitent	0.16*	0.08	0.09	0.10	0.14	0.09	-0.07	-45%
High and Reversing	High and Renitent	0.03	0.09	0.00	0.11	0.04	0.09	-0.02	-96%

Note. Comparisons that were statistically significant in the original analysis are bolded for ease of interpretation. Log odds are shown rather than odds ratios because the model is linear in terms of log odds, which facilitates comparisons between parameters in percentage terms. The N is smaller than the N for the original model because 1997 participants with child genetic data did not also have mother genetic data, and they were listwise deleted to facilitate direct comparisons in changes across models. * $FDR < 0.05$;

$p < 0.05$, but $FDR > 0.05$.

Table S5. Summary of gene-based hits using MAGMA.

Gene	Chr	Start	Stop	# of SNPs	R ²	P-value	Association
GABRA4	4	46920917	46996424	218	0.0069	6.84e ⁻⁵	HR vs MS
LRR1	14	50065415	50081390	43	0.0045	4.71e ⁻⁵	HR vs MS
SIX5	19	46268043	46272497	3	0.0029	9.16e ⁻⁶	AUC
DMPK	19	46272975	46285815	17	0.0030	4.97e ⁻⁵	AUC
DKK1	10	54074041	54077417	5	0.0023	9.23e ⁻⁵	AUC
SIX5	19	46268043	46272497	3	0.0033	5.56e ⁻⁶	Intercept
DMPK	19	46272975	46285815	17	0.0042	1.05e ⁻⁵	Intercept
SMDT1	22	42475695	42480288	6	0.0033	2.31e ⁻⁵	Intercept
DMWD	19	46286264	46296060	17	0.0041	9.79e ⁻⁵	Intercept

*HR = high/renitent class; MS = minimal symptoms class; AUC = cumulative burden of depressive symptoms; intercept = onset of depressive symptoms

Table S6. Child and mother characteristics stratified by latent class

	Overall	Minimal Symptoms	Adolescent Spike	Late Childhood Peak	Childhood Decrease	High and Reversing	High and Renitent	χ^2 p-value
n	7308	4146	182	222	440	423	1895	
Mother's age at birth (%)								
Ages 15-19	142 (2.0)	71 (1.8)	1 (0.6)	4 (1.8)	10 (2.3)	7 (1.7)	49 (2.7)	0.73
Ages 20-35	6281 (89.8)	3568 (89.9)	160 (90.4)	194 (89.4)	389 (89.4)	365 (90.1)	1605 (89.5)	
Age 36+	575 (8.2)	332 (8.4)	16 (9.0)	19 (8.8)	36 (8.3)	33 (8.1)	139 (7.8)	
Marital status (%)								
Never Married	950 (13.9)	516 (13.3)	15 (8.6)	18 (8.5)	58 (13.6)	59 (14.9)	284 (16.3)	0.02
Widowed/ Divorced/ Separated	364 (5.3)	203 (5.2)	7 (4.0)	9 (4.2)	19 (4.4)	27 (6.8)	99 (5.7)	
Married	5529 (80.8)	3167 (81.5)	152 (87.4)	186 (87.3)	350 (82.0)	310 (78.3)	1364 (78.1)	
Parent SES (%)								
Professional	942 (12.9)	561 (13.5)	21 (11.5)	33 (14.9)	63 (14.3)	61 (14.4)	203 (10.7)	0.035
Managerial and technical	2583 (35.3)	1456 (35.1)	75 (41.2)	91 (41.0)	156 (35.5)	155 (36.6)	650 (34.3)	
Skilled, non-manual	1456 (19.9)	823 (19.9)	47 (25.8)	44 (19.8)	91 (20.7)	82 (19.4)	369 (19.5)	
Skilled, manual	438 (6.0)	245 (5.9)	1 (0.5)	13 (5.9)	27 (6.1)	25 (5.9)	127 (6.7)	
Semi-skilled, manual	125 (1.7)	69 (1.7)	2 (1.1)	3 (1.4)	8 (1.8)	4 (0.9)	39 (2.1)	
Unskilled, manual/other	1764 (24.1)	992 (23.9)	36 (19.8)	38 (17.1)	95 (21.6)	96 (22.7)	507 (26.8)	
Mother's education (%)								
Less than O-level	1575 (23.3)	873 (22.8)	27 (15.4)	43 (19.9)	94 (22.0)	85 (21.4)	453 (26.4)	0.01
O-level	2366 (35.1)	1360 (35.6)	63 (36.0)	66 (30.6)	147 (34.4)	131 (33.0)	599 (35.0)	
A-level	1724 (25.5)	1000 (26.2)	54 (30.9)	62 (28.7)	102 (23.9)	104 (26.2)	402 (23.5)	
Degree or above	1084 (16.1)	588 (15.4)	31 (17.7)	45 (20.8)	84 (19.7)	77 (19.4)	259 (15.1)	
Child sex (%)								
Female	3601 (49.3)	1976 (47.7)	120 (65.9)	111 (50.0)	188 (42.7)	231 (54.6)	975 (51.5)	<0.001
Male	3707 (50.7)	4145 (52.3)	62 (34.1)	111 (50.0)	252 (57.3)	192 (45.4)	920 (48.5)	

Previous pregnancies (%)								
0	3045 (44.9)	1631 (42.5)	81 (47.1)	100 (46.7)	199 (46.8)	191 (48.6)	843 (48.7)	0.006
1	2480 (36.6)	1481 (38.6)	59 (34.3)	79 (36.9)	151 (35.5)	128 (32.6)	582 (33.6)	
2	921 (13.6)	538 (14.0)	29 (16.9)	31 (14.5)	58 (13.6)	50 (12.7)	215 (12.4)	
3+	330 (4.9)	191 (5.0)	3 (1.7)	4 (1.9)	17 (4.0)	24 (6.1)	91 (5.3)	
Birthweight								
< 3000	1572 (21.5)	850 (20.5)	39 (21.4)	48 (21.6)	78 (17.7)	102 (24.1)	455 (24.0)	0.063
3000 - 3499	2446 (33.5)	1382 (33.3)	61 (33.5)	76 (34.2)	170 (38.6)	135 (31.9)	622 (32.8)	
3500 - 3999	2338 (32.0)	1355 (32.7)	57 (31.3)	58 (26.1)	142 (32.3)	127 (30.0)	599 (31.6)	
>= 4000	952 (13.0)	559 (13.5)	25 (13.7)	40 (18.0)	50 (11.4)	59 (13.9)	219 (11.6)	

Note. Participant characteristics were determined by assigning each individual to their most likely latent class. SES = Socioeconomic status. PRS = Polygenic risk score.

SUPPLEMENTAL FIGURES

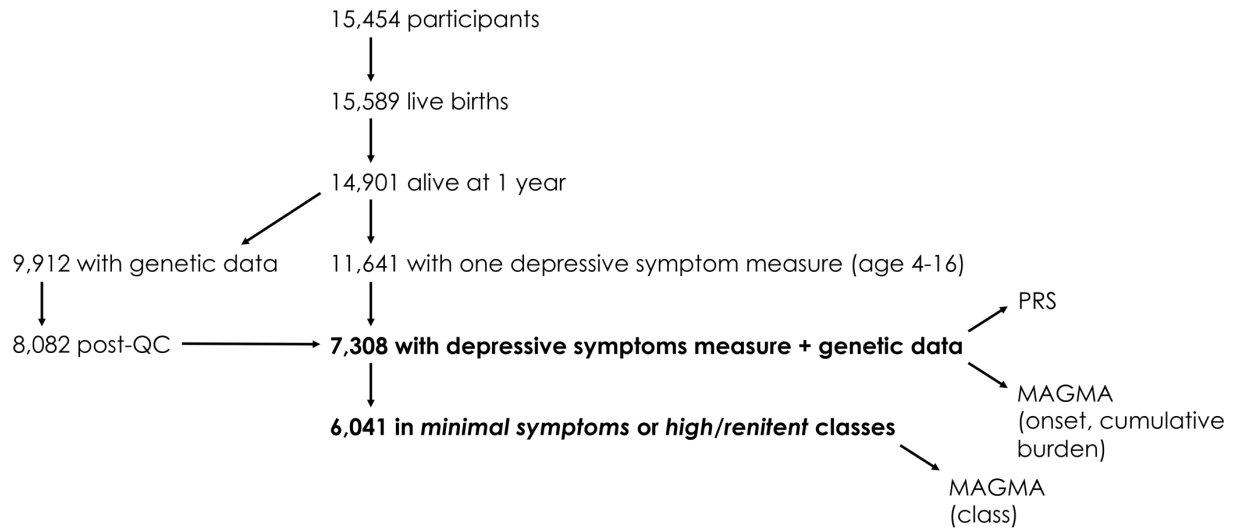


Figure S1. Flowchart of ALSPAC sample selection. Of the eligible participants after 1 year (14,901), two subsamples were selected: those with genetic data (9,912) and those with at least one measure of depressive symptoms from age 4-16 (11,641). Following quality control measures, the genetic subsample was reduced to 8,082 individuals. The overlap between these two samples was 7,308 individuals, which we defined as the analytical sample for the polygenic risk score (PRS) analyses of depressive symptom trajectories, as well as gene-level associations with depressive symptom onset and cumulative burden using MAGMA. The analytical sample was further subset to 6,041 individuals for the trajectory class-based MAGMA analysis, which focused solely on youths classified as high/renitent or minimal symptoms for the depressive symptom trajectories.

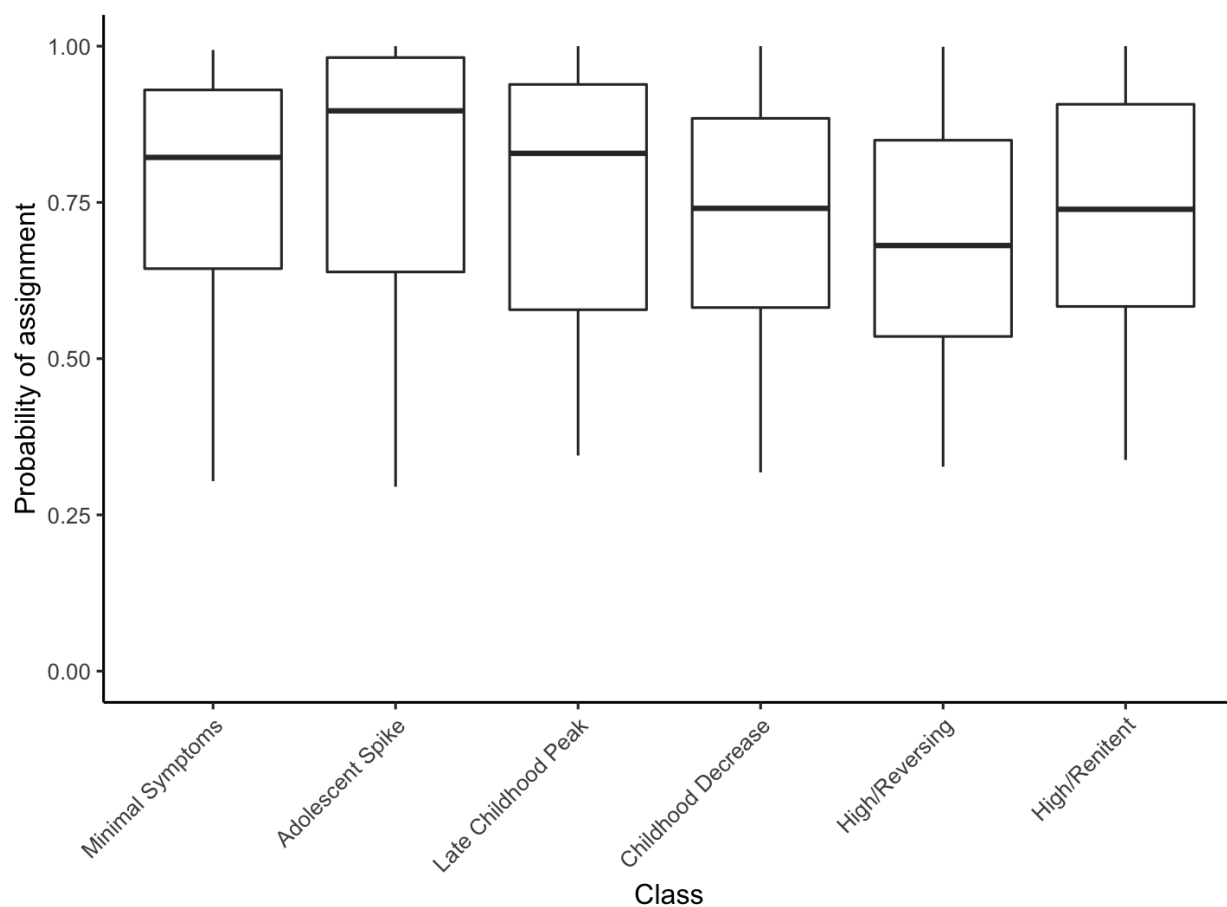


Figure S2. Probability of class assignment for individuals within their assigned latent class.

Each individual was assigned to the trajectory class reflecting their highest probability of assignment across all classes (which ranged from 0-100). Within each class, the probability of highest assignment ranged from 0.3 to 1. The percentage of youths assigned to each trajectory class was estimated as follows: 4,146 minimal symptoms (56.7%), 182 adolescent spike (2.5%), 222 late childhood peak (3%), 440 childhood decrease (6%), 423 high/reversing (5.8%), and 1,895 high/remitent (25.9%).

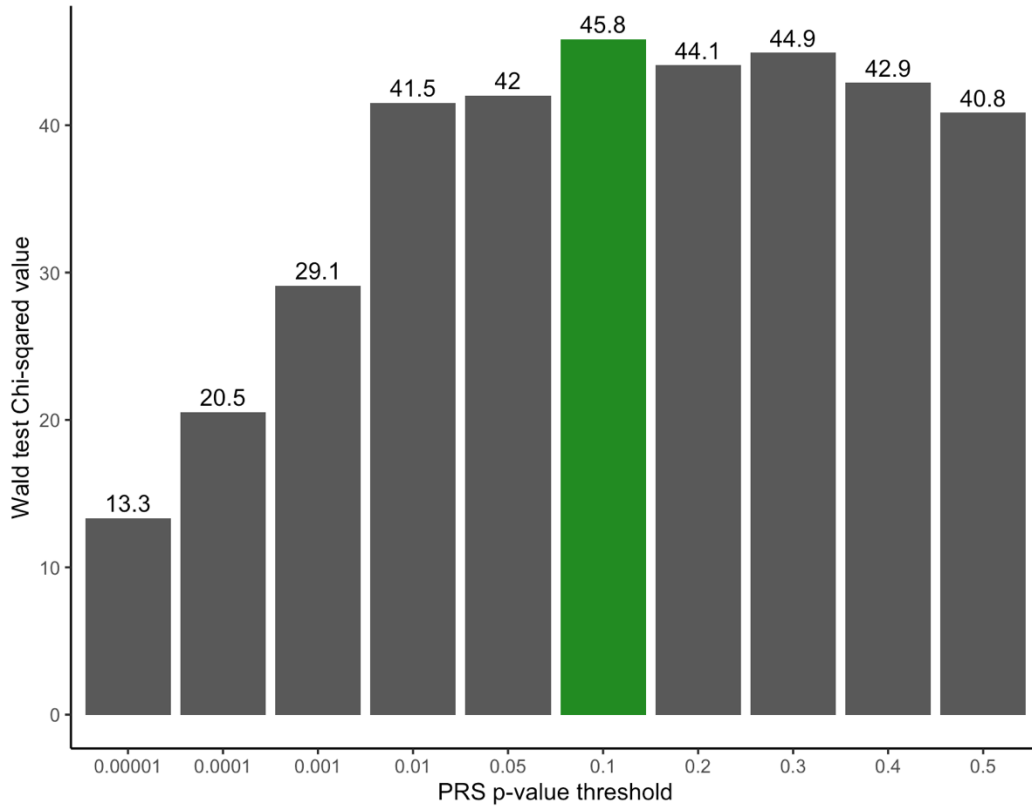


Figure S3. The PRS with $pT < 0.1$ was the ‘best fit’ polygenic risk score. Using the Wald omnibus test of parameter constraints, we show that the polygenic risk score (PRS) generated with the p-value threshold of $p < 0.1$ (green) explained the most variance in the depression trajectories.

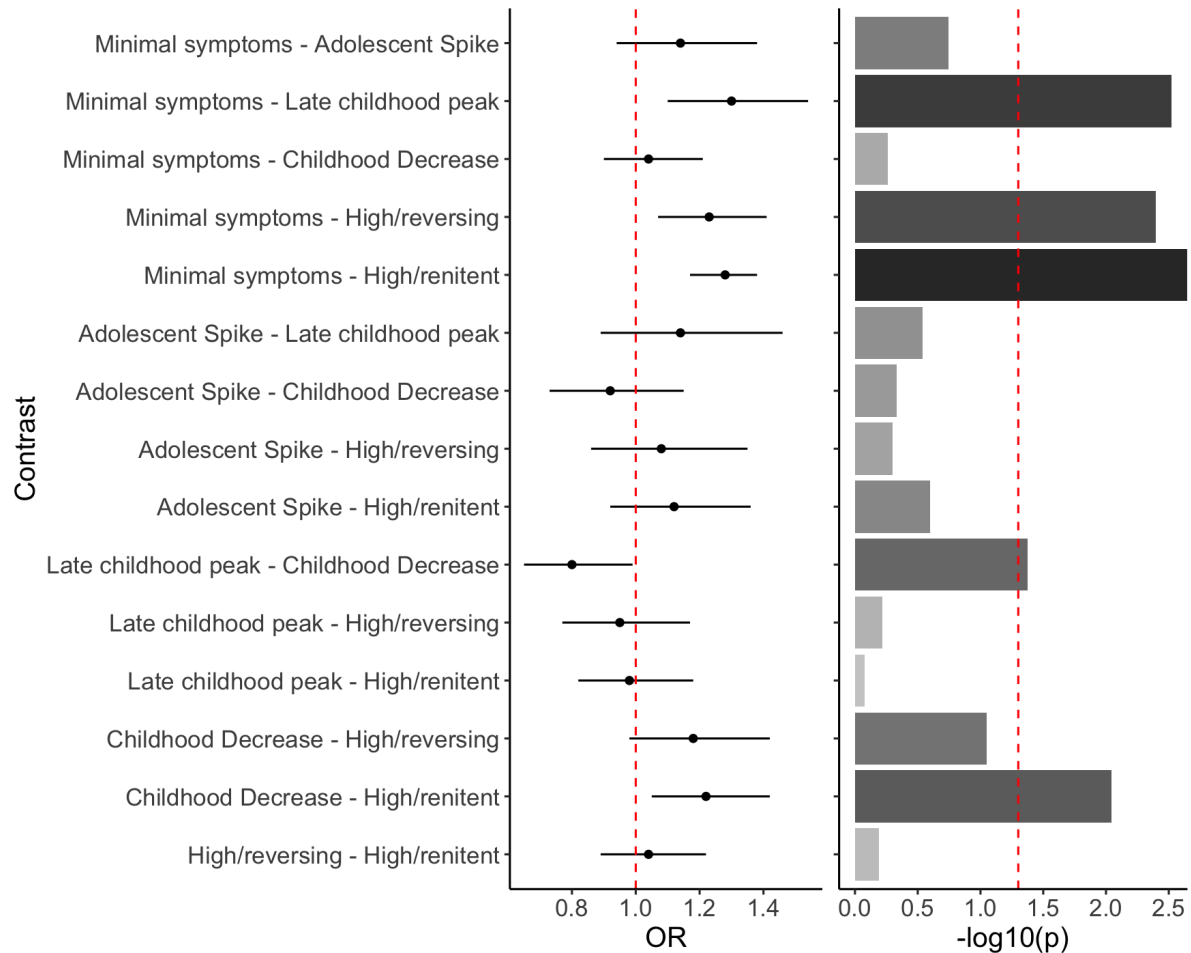


Figure S4. Polygenic risk scores identified differences in membership to classes of depressive symptom trajectories. Odds ratios (OR) were calculated to determine the odds of membership of each class versus the referent given a one unit increase in polygenic risk score (PRS). While five contrasts were significant ($p < 0.05$), only four remained significant after multiple test correction at an $FDR < 0.05$ (high/stable vs minimal symptoms; high/stable vs childhood decrease; high/unstable vs minimal symptoms).

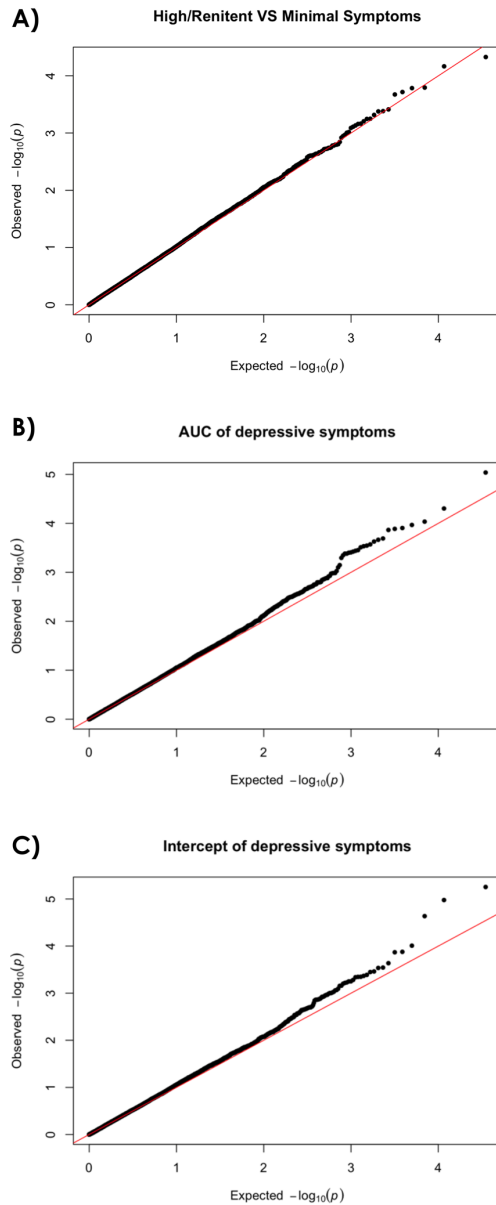


Figure S5. Quantile-quantile (QQ) plots of gene-level genome-wide associations show good model fit of the MAGMA analysis. A) The QQ plot of the high/stable (HS) and minimal symptoms (MS) classes of depressive symptoms trajectories showed good model fit, with a slight downward skew. **B)** The QQ plot of depressive symptom persistence across age 4-16, defined as the area under the curve (AUC) of the trajectory was slightly skewed upward, but showed good model fit. **C)** The QQ plot of depressive symptom onset, defined by the intercept of the trajectory, was also slightly skewed upward and showed good model fit.

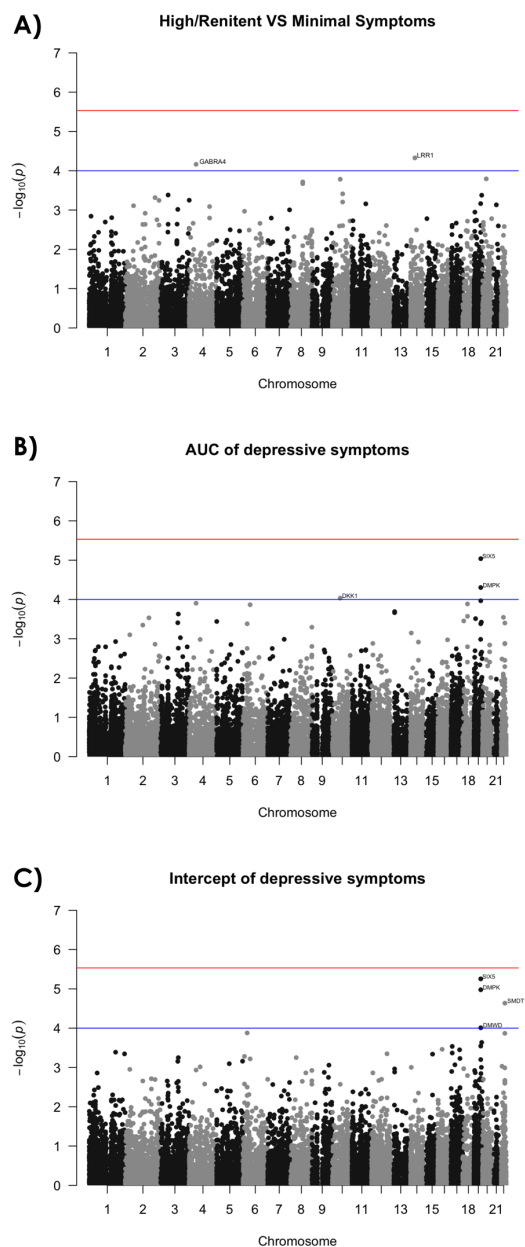


Figure S6. Depressive symptom developmental features showed nominal gene-level associations. **A)** The contrast of high/renitent (HR) and minimal symptoms (MS) classes showed two nominal associations (GABRA4, LRR1). **B)** Depressive symptom cumulative burden (AUC) showed three nominal associations (SIX5, DPMK, DKK1). **C)** Depressive symptom onset (intercept) showed four nominal associations (SIX5, DPKM, SMDT1, DMWD). Genome-wide significance was set at 2.93×10^{-6} (red) and the nominal threshold was set at 1×10^{-4} (blue).

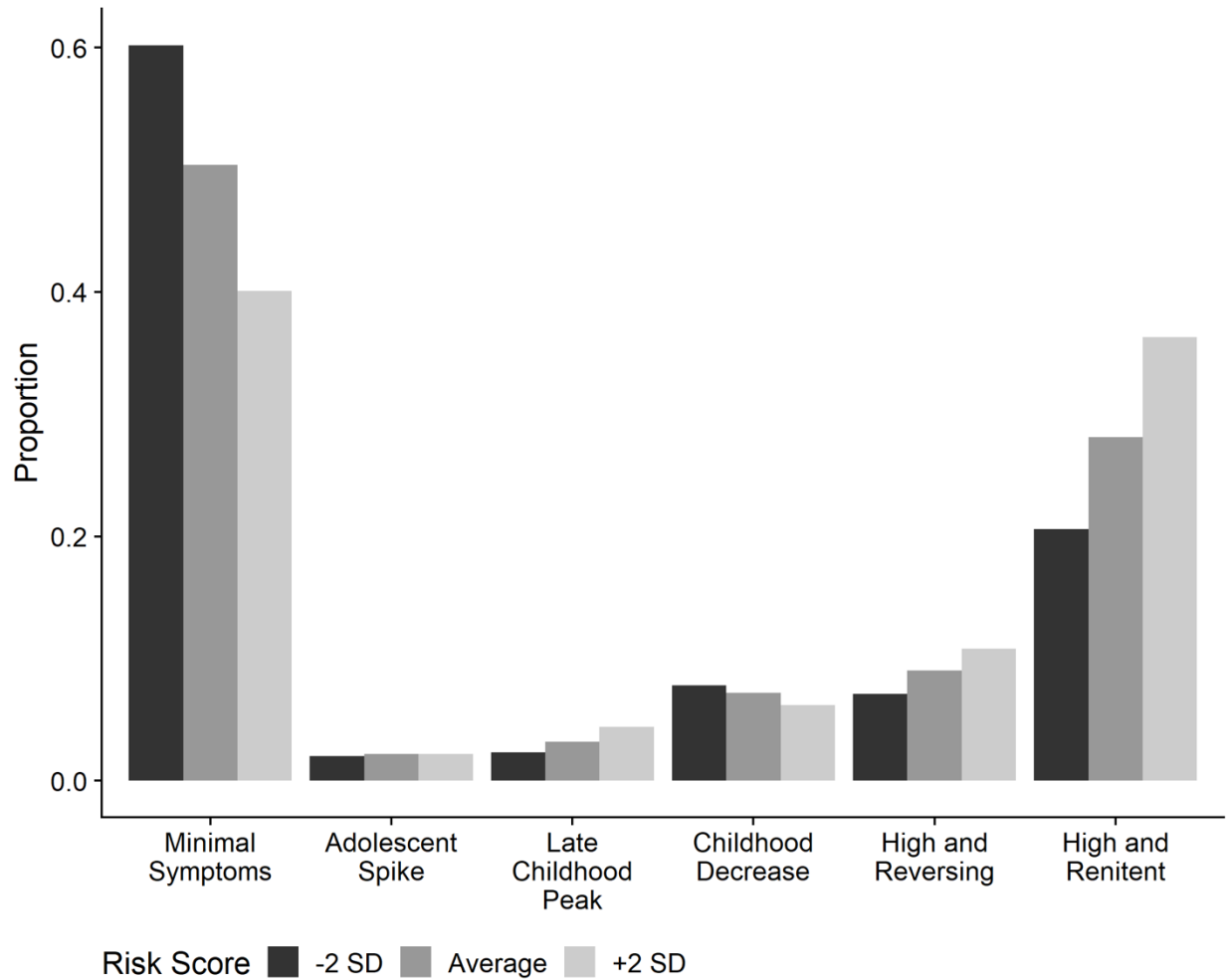


Figure S7 shows the model-estimated proportion of individuals in each latent class across low (-2 SD) average and high (+2 standard deviation) polygenic risk scores. For example, about 60% of participants with a risk score 2 standard deviations below the average would be expected to be in the Minimal Symptoms class, whereas only 40% of participants with a risk score 2 standard deviations above average would be expected to be in the Minimal Symptoms class.

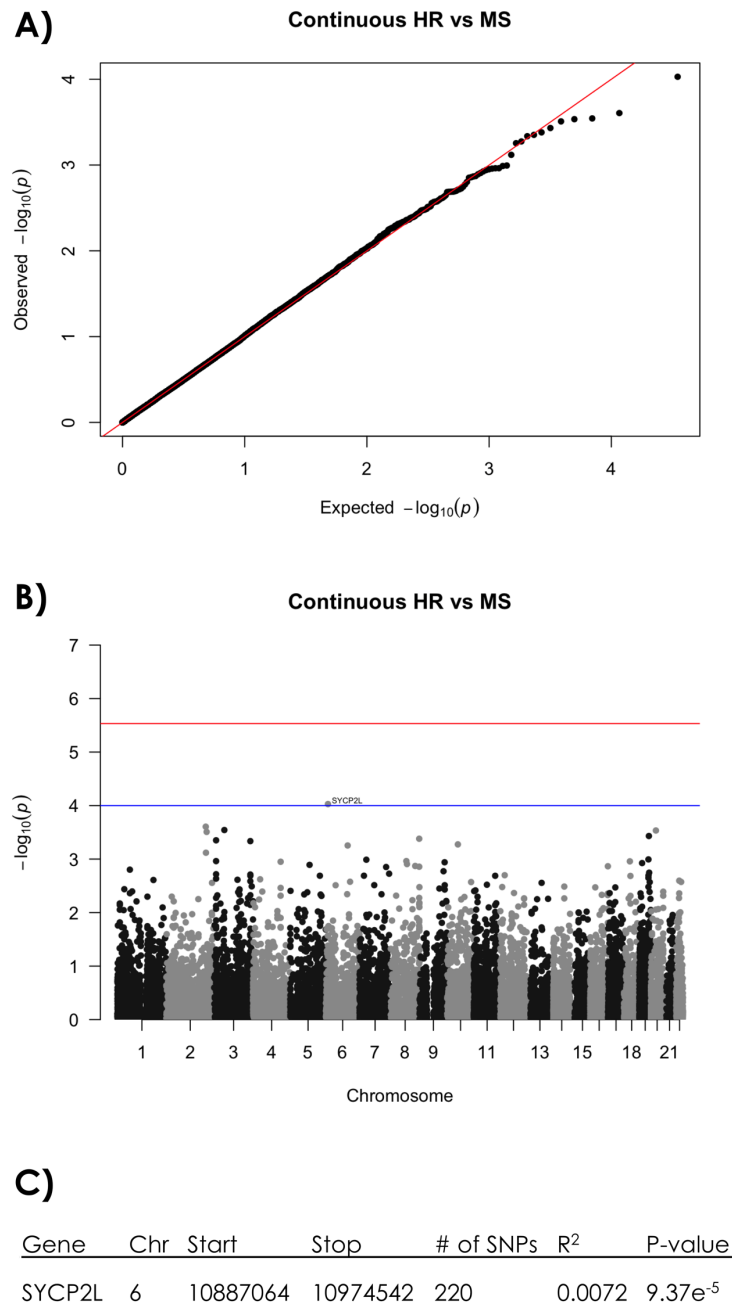


Figure S8. MAGMA analysis of the probability of assignment to the high/renitent class.

MAGMA was performed using all 7,308 individuals and their probability of being assigned to the high/renitent class was used to identify gene-level associations. No genes reached the genome-wide significance threshold ($p < 2.93 \times 10^{-7}$; red line in B), but one gene reached the nominal threshold of $p < 1 \times 10^{-4}$ (blue line in B; results shown in C).

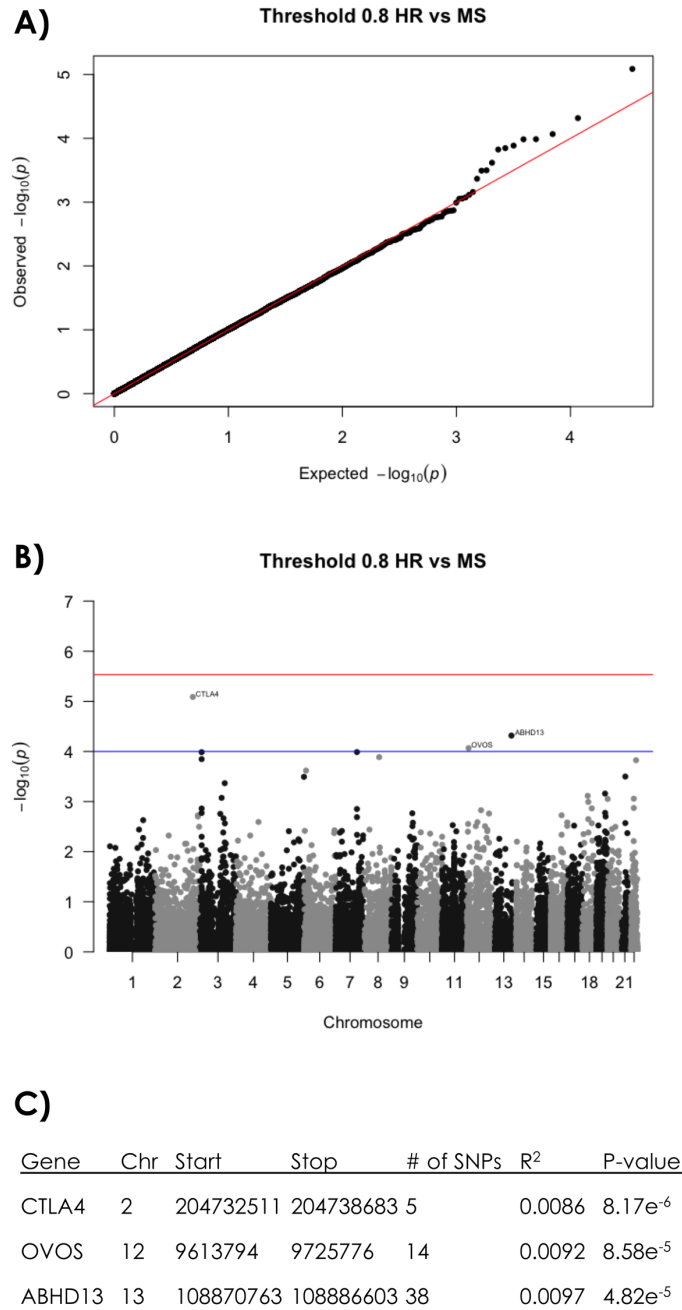


Figure S9. MAGMA analysis of youths in the high/renitent vs minimal symptoms class. MAGMA was performed using youths in the high/renitent (HR) or minimal symptoms (MS) classes that had 80% probability of class assignment (2258 MS vs 786 HR). No genes reached the genome-wide significance threshold ($p < 2.93 \times 10^{-7}$; red line in B), but three genes reached the nominal threshold of $p < 1 \times 10^{-4}$ (blue line in B; results shown in C).

Major Depressive Disorder Working Group of the Psychiatric Genomics Consortium

Naomi R Wray* 1, 2
Stephan Ripke* 3, 4, 5
Manuel Mattheisen* 6, 7, 8
Maciej Trzaskowski 1
Enda M Byrne 1
Abdel Abdellaoui 9
Mark J Adams 10
Esben Agerbo 11, 12, 13
Tracy M Air 14
Till F M Andlauer 15, 16
Silviu-Alin Bacanu 17
Marie Bækvad-Hansen 13, 18
Aartjan T F Beekman 19
Tim B Bigdeli 17, 20
Elisabeth B Binder 15, 21
Julien Bryois 22
Henriette N Buttenschøn 13, 23, 24
Jonas Bybjerg-Grauholm 13, 18
Na Cai 25, 26
Enrique Castelao 27
Jane Hvarregaard Christensen 8, 13, 24
Toni-Kim Clarke 10
Jonathan R I Coleman 28
Lucia Colodro-Conde 29
Baptiste Couvy-Duchesne 2, 30
Nick Craddock 31
Gregory E Crawford 32, 33
Gail Davies 34
Ian J Deary 34
Franziska Degenhardt 35
Eske M Derks 29
Nese Direk 36, 37
Conor V Dolan 9
Erin C Dunn 38, 39, 40
Thalia C Eley 28
Valentina Escott-Price 41
Farnush Farhadi Hassan Kiadeh 42
Hilary K Finucane 43, 44
Jerome C Foo 45
Andreas J Forstner 35, 46, 47, 48
Josef Frank 45
Hélène A Gaspar 28
Michael Gill 49
Fernando S Goes 50
Scott D Gordon 29
Jakob Grove 8, 13, 24, 51
Lynsey S Hall 10, 52
Christine Søholm Hansen 13, 18
Thomas F Hansen 53, 54, 55
Stefan Herms 35, 47
Ian B Hickie 56
Per Hoffmann 35, 47
Georg Homuth 57
Carsten Horn 58
Jouke-Jan Hottenga 9
David M Hougaard 13, 18
David M Howard 10, 28
Marcus Ising 59
Rick Jansen 19
Ian Jones 60
Lisa A Jones 61
Eric Jorgenson 62
James A Knowles 63
Isaac S Kohane 64, 65, 66
Julia Kraft 4
Warren W. Kretschmar 67
Zoltán Kutalik 68, 69
Yihan Li 67
Penelope A Lind 29
Donald J MacIntyre 70, 71
Dean F MacKinnon 50
Robert M Maier 2
Wolfgang Maier 72
Jonathan Marchini 73
Hamdi Mbarek 9
Patrick McGrath 74
Peter McGuffin 28
Sarah E Medland 29
Divya Mehta 2, 75
Christel M Middeldorp 9, 76, 77
Evelin Mihailov 78
Yuri Milaneschi 19
Lili Milani 78
Francis M Mondimore 50
Grant W Montgomery 1
Sara Mostafavi 79, 80
Niamh Mullins 28
Matthias Nauck 81, 82
Bernard Ng 80
Michel G Nivard 9
Dale R Nyholt 83
Paul F O'Reilly 28
Hogni Oskarsson 84
Michael J Owen 60
Jodie N Painter 29
Carsten Bøcker Pedersen 11, 12, 13
Marianne Giørtz Pedersen 11, 12, 13
Roseann E Peterson 17, 85
Erik Pettersson 22
Wouter J Peyrot 19
Giorgio Pistis 27
Danielle Posthuma 86, 87
Jorge A Quiroz 88
Per Qvist 8, 13, 24
John P Rice 89
Brien P. Riley 17
Margarita Rivera 28, 90
Saira Saeed Mirza 36
Robert Schoevers 91
Eva C Schulte 92, 93
Ling Shen 62
Jianxin Shi 94
Stanley I Shyn 95
Engilbert Sigurdsson 96
Grant C B Sinnamon 97
Johannes H Smit 19
Daniel J Smith 98
Hreinn Stefansson 99
Stacy Steinberg 99
Fabian Streit 45
Jana Strohmaier 45
Katherine E Tansey 100
Henning Teismann 101
Alexander Teumer 102
Wesley Thompson 13, 54, 103, 104
Pippa A Thomson 105
Thorgeir E Thorgeirsson 99
Matthew Traylor 106
Jens Treutlein 45
Vassily Trubetskoy 4
Andrés G Uitterlinden 107
Daniel Umbricht 108
Sandra Van der Auwera 109
Albert M van Hemert 110
Alexander Viktorin 22
Peter M Visscher 1, 2
Yunpeng Wang 13, 54, 104
Bradley T. Webb 111
Shantel Marie Weinsheimer 13, 54
Jürgen Wellmann 101
Gonneke Willemsen 9
Stephanie H Witt 45
Yang Wu 1
Hualin S Xi 112
Jian Yang 2, 113
Futao Zhang 1
Volker Arolt 114
Bernhard T Baune 115, 116, 117
Klaus Berger 101
Dorret I Boomsma 9
Sven Cichon 35, 47, 118, 119

Udo Dannlowski 114
EJC de Geus 9, 120
J Raymond DePaulo 50
Enrico Domenici 121
Katharina Domschke 122, 123
Tõnu Esko 5, 78
Hans J Grabe 109
Steven P Hamilton 124
Caroline Hayward 125
Andrew C Heath 89
Kenneth S Kendler 17
Stefan Kloiber 59, 126, 127
Glyn Lewis 128
Qingqin S Li 129
Susanne Lucae 59
Pamela AF Madden 89
Patrik K Magnusson 22
Nicholas G Martin 29
Andrew M McIntosh 10, 34
Andres Metspalu 78, 130
Ole Mors 13, 131
Preben Bo Mortensen 11, 12,
13, 24
Bertram Müller-Myhsok 15,
132, 133
Merete Nordentoft 13, 134
Markus M Nöthen 35
Michael C O'Donovan 60
Sara A Paciga 135
Nancy L Pedersen 22
Brenda WJH Penninx 19
Roy H Perlis 38, 136
David J Porteous 105
James B Potash 137
Martin Preisig 27
Marcella Rietschel 45
Catherine Schaefer 62
Thomas G Schulze 45, 93, 138,
139, 140
Jordan W Smoller 38, 39, 40
Kari Stefansson 99, 141
Henning Tiemeier 36, 142, 143
Rudolf Uher 144
Henry Völzke 102
Myrna M Weissman 74, 145
Thomas Werge 13, 54, 146
Cathryn M Lewis* 28, 147
Douglas F Levinson* 148
Gerome Breen* 28, 149
Anders D Børglum* 8, 13, 24
Patrick F Sullivan* 22, 150,
151,

- 1, Institute for Molecular Bioscience, The University of Queensland, Brisbane, QLD, AU
- 2, Queensland Brain Institute, The University of Queensland, Brisbane, QLD, AU
- 3, Analytic and Translational Genetics Unit, Massachusetts General Hospital, Boston, MA, US
- 4, Department of Psychiatry and Psychotherapy, Universitätsmedizin Berlin Campus Charité Mitte, Berlin, DE
- 5, Medical and Population Genetics, Broad Institute, Cambridge, MA, US
- 6, Department of Psychiatry, Psychosomatics and Psychotherapy, University of Würzburg, Würzburg, DE
- 7, Centre for Psychiatry Research, Department of Clinical Neuroscience, Karolinska Institutet, Stockholm, SE
- 8, Department of Biomedicine, Aarhus University, Aarhus, DK
- 9, Dept of Biological Psychology & EMGO+ Institute for Health and Care Research, Vrije Universiteit Amsterdam, Amsterdam, NL
- 10, Division of Psychiatry, University of Edinburgh, Edinburgh, GB
- 11, Centre for Integrated Register-based Research, Aarhus University, Aarhus, DK
- 12, National Centre for Register-Based Research, Aarhus University, Aarhus, DK
- 13, iPSYCH, The Lundbeck Foundation Initiative for Integrative Psychiatric Research., DK
- 14, Discipline of Psychiatry, University of Adelaide, Adelaide, SA, AU
- 15, Department of Translational Research in Psychiatry, Max Planck Institute of Psychiatry, Munich, DE
- 16, Department of Neurology, Klinikum rechts der Isar, Technical University of Munich, Munich, DE
- 17, Department of Psychiatry, Virginia Commonwealth University, Richmond, VA, US
- 18, Center for Neonatal Screening, Department for Congenital Disorders, Statens Serum Institut, Copenhagen, DK
- 19, Department of Psychiatry, Vrije Universiteit Medical Center and GGZ inGeest, Amsterdam, NL
- 20, Virginia Institute for Psychiatric and Behavior Genetics, Richmond, VA, US
- 21, Department of Psychiatry and Behavioral Sciences, Emory University School of Medicine, Atlanta, GA, US
- 22, Department of Medical Epidemiology and Biostatistics, Karolinska Institutet, Stockholm, SE
- 23, Department of Clinical Medicine, Translational Neuropsychiatry Unit, Aarhus University, Aarhus, DK
- 24, iSEQ, Centre for Integrative Sequencing, Aarhus University, Aarhus, DK
- 25, Human Genetics, Wellcome Trust Sanger Institute, Cambridge, GB
- 26, Statistical genomics and systems genetics, European Bioinformatics Institute (EMBL-EBI), Cambridge, GB
- 27, Department of Psychiatry, Lausanne University Hospital and University of Lausanne, Lausanne, CH
- 28, Social, Genetic and Developmental Psychiatry Centre, King's College London, London, GB
- 29, Genetics and Computational Biology, QIMR Berghofer Medical Research Institute, Brisbane, QLD, AU
- 30, Centre for Advanced Imaging, The University of Queensland, Brisbane, QLD, AU
- 31, Psychological Medicine, Cardiff University, Cardiff, GB
- 32, Center for Genomic and Computational Biology, Duke University, Durham, NC, US
- 33, Department of Pediatrics, Division of Medical Genetics, Duke University, Durham, NC, US
- 34, Centre for Cognitive Ageing and Cognitive Epidemiology, University of Edinburgh, Edinburgh, GB
- 35, Institute of Human Genetics, University of Bonn, School of Medicine & University Hospital Bonn, Bonn, DE
- 36, Epidemiology, Erasmus MC, Rotterdam, Zuid-Holland, NL
- 37, Psychiatry, Dokuz Eylül University School Of Medicine, Izmir, TR
- 38, Department of Psychiatry, Massachusetts General Hospital, Boston, MA, US
- 39, Psychiatric and Neurodevelopmental Genetics Unit (PNGU), Massachusetts General Hospital, Boston, MA, US
- 40, Stanley Center for Psychiatric Research, Broad Institute, Cambridge, MA, US
- 41, Neuroscience and Mental Health, Cardiff University, Cardiff, GB
- 42, Bioinformatics, University of British Columbia, Vancouver, BC, CA
- 43, Department of Epidemiology, Harvard T.H. Chan School of Public Health, Boston, MA, US
- 44, Department of Mathematics, Massachusetts Institute of Technology, Cambridge, MA, US
- 45, Department of Genetic Epidemiology in Psychiatry, Central Institute of Mental Health, Medical Faculty Mannheim, Heidelberg University, Mannheim, Baden-Württemberg, DE
- 46, Department of Psychiatry (UPK), University of Basel, Basel, CH
- 47, Department of Biomedicine, University of Basel, Basel, CH
- 48, Centre for Human Genetics, University of Marburg, Marburg, DE
- 49, Department of Psychiatry, Trinity College Dublin, Dublin, IE
- 50, Psychiatry & Behavioral Sciences, Johns Hopkins University, Baltimore, MD, US
- 51, Bioinformatics Research Centre, Aarhus University, Aarhus, DK
- 52, Institute of Genetic Medicine, Newcastle University, Newcastle upon Tyne, GB

53, Danish Headache Centre, Department of Neurology, Rigshospitalet, Glostrup, DK
54, Institute of Biological Psychiatry, Mental Health Center Sct. Hans, Mental Health Services Capital Region of Denmark, Copenhagen, DK
55, iPSYCH, The Lundbeck Foundation Initiative for Psychiatric Research, Copenhagen, DK
56, Brain and Mind Centre, University of Sydney, Sydney, NSW, AU
57, Interfaculty Institute for Genetics and Functional Genomics, Department of Functional Genomics, University Medicine and Ernst Moritz Arndt University Greifswald, Greifswald, Mecklenburg-Vorpommern, DE
58, Roche Pharmaceutical Research and Early Development, Pharmaceutical Sciences, Roche Innovation Center Basel, F. Hoffmann-La Roche Ltd, Basel, CH
59, Max Planck Institute of Psychiatry, Munich, DE
60, MRC Centre for Neuropsychiatric Genetics and Genomics, Cardiff University, Cardiff, GB
61, Department of Psychological Medicine, University of Worcester, Worcester, GB
62, Division of Research, Kaiser Permanente Northern California, Oakland, CA, US
63, Psychiatry & The Behavioral Sciences, University of Southern California, Los Angeles, CA, US
64, Department of Biomedical Informatics, Harvard Medical School, Boston, MA, US
65, Department of Medicine, Brigham and Women's Hospital, Boston, MA, US
66, Informatics Program, Boston Children's Hospital, Boston, MA, US
67, Wellcome Trust Centre for Human Genetics, University of Oxford, Oxford, GB
68, Institute of Social and Preventive Medicine (IUMSP), University Hospital of Lausanne, Lausanne, VD, CH
69, Swiss Institute of Bioinformatics, Lausanne, VD, CH
70, Division of Psychiatry, Centre for Clinical Brain Sciences, University of Edinburgh, Edinburgh, GB
71, Mental Health, NHS 24, Glasgow, GB
72, Department of Psychiatry and Psychotherapy, University of Bonn, Bonn, DE
73, Statistics, University of Oxford, Oxford, GB
74, Psychiatry, Columbia University College of Physicians and Surgeons, New York, NY, US
75, School of Psychology and Counseling, Queensland University of Technology, Brisbane, QLD, AU
76, Child and Youth Mental Health Service, Children's Health Queensland Hospital and Health Service, South Brisbane, QLD, AU
77, Child Health Research Centre, University of Queensland, Brisbane, QLD, AU
78, Estonian Genome Center, University of Tartu, Tartu, EE
79, Medical Genetics, University of British Columbia, Vancouver, BC, CA
80, Statistics, University of British Columbia, Vancouver, BC, CA
81, DZHK (German Centre for Cardiovascular Research), Partner Site Greifswald, University Medicine, University Medicine Greifswald, Greifswald, Mecklenburg-Vorpommern, DE
82, Institute of Clinical Chemistry and Laboratory Medicine, University Medicine Greifswald, Greifswald, Mecklenburg-Vorpommern, DE
83, Institute of Health and Biomedical Innovation, Queensland University of Technology, Brisbane, QLD, AU
84, Humus, Reykjavik, IS
85, Virginia Institute for Psychiatric & Behavioral Genetics, Virginia Commonwealth University, Richmond, VA, US
86, Clinical Genetics, Vrije Universiteit Medical Center, Amsterdam, NL
87, Complex Trait Genetics, Vrije Universiteit Amsterdam, Amsterdam, NL
88, Solid Biosciences, Boston, MA, US
89, Department of Psychiatry, Washington University in Saint Louis School of Medicine, Saint Louis, MO, US
90, Department of Biochemistry and Molecular Biology II, Institute of Neurosciences, Biomedical Research Centre (CIBM), University of Granada, Granada, ES
91, Department of Psychiatry, University of Groningen, University Medical Center Groningen, Groningen, NL
92, Department of Psychiatry and Psychotherapy, University Hospital, Ludwig Maximilian University Munich, Munich, DE
93, Institute of Psychiatric Phenomics and Genomics (IPPG), University Hospital, Ludwig Maximilian University Munich, Munich, DE
94, Division of Cancer Epidemiology and Genetics, National Cancer Institute, Bethesda, MD, US
95, Behavioral Health Services, Kaiser Permanente Washington, Seattle, WA, US
96, Faculty of Medicine, Department of Psychiatry, University of Iceland, Reykjavik, IS
97, School of Medicine and Dentistry, James Cook University, Townsville, QLD, AU
98, Institute of Health and Wellbeing, University of Glasgow, Glasgow, GB

99, deCODE Genetics / Amgen, Reykjavik, IS
100, College of Biomedical and Life Sciences, Cardiff University, Cardiff, GB
101, Institute of Epidemiology and Social Medicine, University of Münster, Münster, Nordrhein-Westfalen, DE
102, Institute for Community Medicine, University Medicine Greifswald, Greifswald, Mecklenburg-Vorpommern, DE
103, Department of Psychiatry, University of California, San Diego, San Diego, CA, US
104, KG Jebsen Centre for Psychosis Research, Norway Division of Mental Health and Addiction, Oslo University Hospital, Oslo, NO
105, Medical Genetics Section, CGEM, IGMM, University of Edinburgh, Edinburgh, GB
106, Clinical Neurosciences, University of Cambridge, Cambridge, GB
107, Internal Medicine, Erasmus MC, Rotterdam, Zuid-Holland, NL
108, Roche Pharmaceutical Research and Early Development, Neuroscience, Ophthalmology and Rare Diseases Discovery & Translational Medicine Area, Roche Innovation Center Basel, F. Hoffmann-La Roche Ltd, Basel, CH
109, Department of Psychiatry and Psychotherapy, University Medicine Greifswald, Greifswald, Mecklenburg-Vorpommern, DE
110, Department of Psychiatry, Leiden University Medical Center, Leiden, NL
111, Virginia Institute for Psychiatric & Behavioral Genetics, Virginia Commonwealth University, Richmond, VA, US
112, Computational Sciences Center of Emphasis, Pfizer Global Research and Development, Cambridge, MA, US
113, Institute for Molecular Bioscience; Queensland Brain Institute, The University of Queensland, Brisbane, QLD, AU
114, Department of Psychiatry, University of Münster, Münster, Nordrhein-Westfalen, DE
115, Department of Psychiatry, University of Münster, Münster, DE
116, Department of Psychiatry, Melbourne Medical School, University of Melbourne, Melbourne, AU
117, Florey Institute for Neuroscience and Mental Health, University of Melbourne, Melbourne, AU
118, Institute of Medical Genetics and Pathology, University Hospital Basel, University of Basel, Basel, CH
119, Institute of Neuroscience and Medicine (INM-1), Research Center Juelich, Juelich, DE
120, Amsterdam Public Health Institute, Vrije Universiteit Medical Center, Amsterdam, NL
121, Centre for Integrative Biology, Università degli Studi di Trento, Trento, Trentino-Alto Adige, IT
122, Department of Psychiatry and Psychotherapy, Medical Center - University of Freiburg, Faculty of Medicine, University of Freiburg, Freiburg, DE
123, Center for NeuroModulation, Faculty of Medicine, University of Freiburg, Freiburg, DE
124, Psychiatry, Kaiser Permanente Northern California, San Francisco, CA, US
125, Medical Research Council Human Genetics Unit, Institute of Genetics and Molecular Medicine, University of Edinburgh, Edinburgh, GB
126, Department of Psychiatry, University of Toronto, Toronto, ON, CA
127, Centre for Addiction and Mental Health, Toronto, ON, CA
128, Division of Psychiatry, University College London, London, GB
129, Neuroscience Therapeutic Area, Janssen Research and Development, LLC, Titusville, NJ, US
130, Institute of Molecular and Cell Biology, University of Tartu, Tartu, EE
131, Psychosis Research Unit, Aarhus University Hospital, Risskov, Aarhus, DK
132, Munich Cluster for Systems Neurology (SyNergy), Munich, DE
133, University of Liverpool, Liverpool, GB
134, Mental Health Center Copenhagen, Copenhagen University Hospital, Copenhagen, DK
135, Human Genetics and Computational Biomedicine, Pfizer Global Research and Development, Groton, CT, US
136, Psychiatry, Harvard Medical School, Boston, MA, US
137, Psychiatry, University of Iowa, Iowa City, IA, US
138, Department of Psychiatry and Behavioral Sciences, Johns Hopkins University, Baltimore, MD, US
139, Department of Psychiatry and Psychotherapy, University Medical Center Göttingen, Goettingen, Niedersachsen, DE
140, Human Genetics Branch, NIMH Division of Intramural Research Programs, Bethesda, MD, US
141, Faculty of Medicine, University of Iceland, Reykjavik, IS
142, Child and Adolescent Psychiatry, Erasmus MC, Rotterdam, Zuid-Holland, NL
143, Psychiatry, Erasmus MC, Rotterdam, Zuid-Holland, NL
144, Psychiatry, Dalhousie University, Halifax, NS, CA
145, Division of Epidemiology, New York State Psychiatric Institute, New York, NY, US

146, Department of Clinical Medicine, University of Copenhagen, Copenhagen, DK
147, Department of Medical & Molecular Genetics, King's College London, London, GB
148, Psychiatry & Behavioral Sciences, Stanford University, Stanford, CA, US
149, NIHR Maudsley Biomedical Research Centre, King's College London, London, GB
150, Genetics, University of North Carolina at Chapel Hill, Chapel Hill, NC, US
151, Psychiatry, University of North Carolina at Chapel Hill, Chapel Hill, NC, US