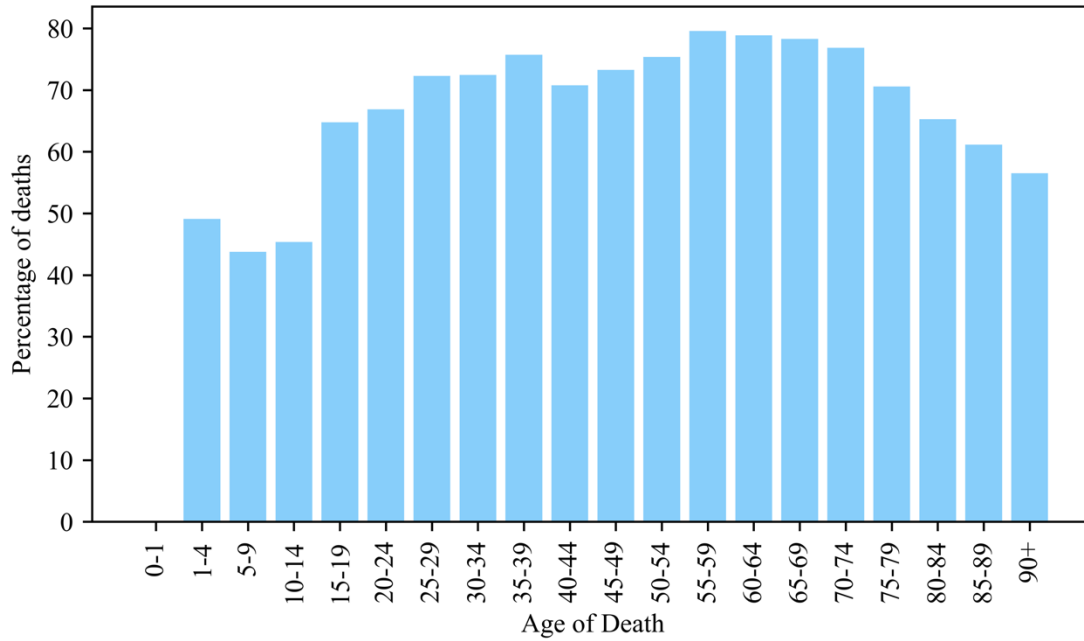


## Supplementary Information

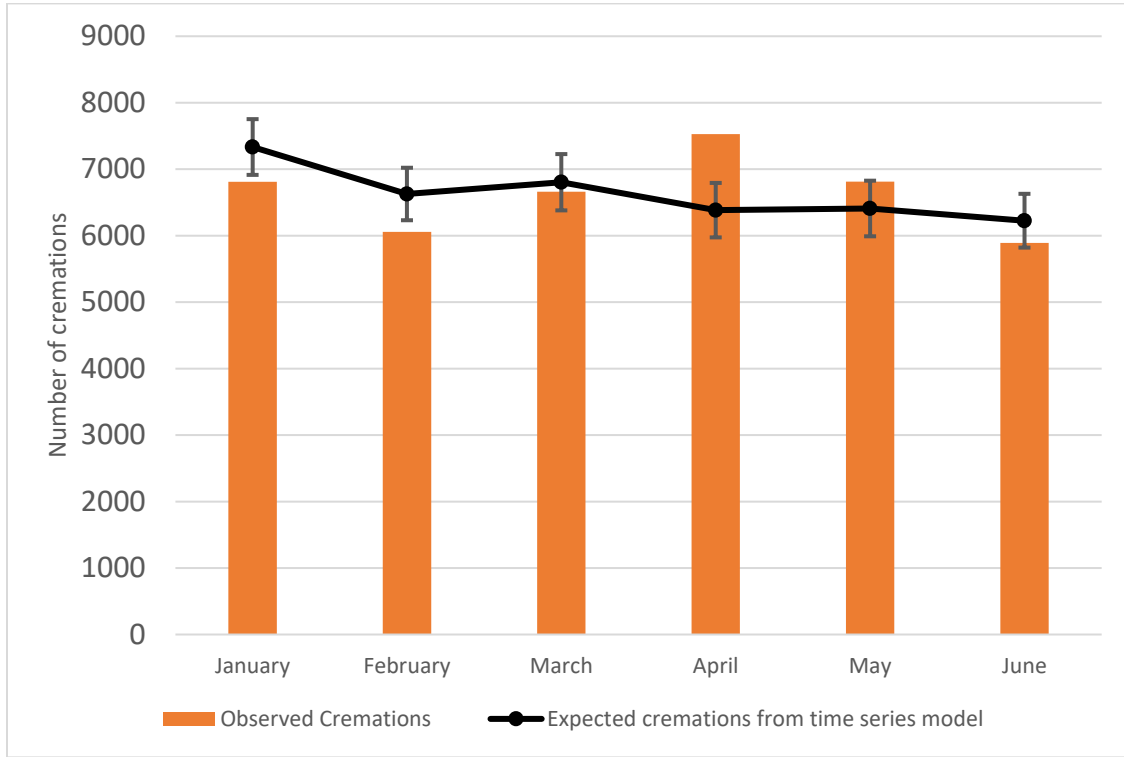
Supplement Figure 1. Percentage of deaths cremated by Age for Ontario in 2017-2019. The values were calculated using Statistics Canada's 2017-2018 age stratified mortality.



Supplement Table 1. Total long-term care deaths by time period.

	TOTAL LTC CREMATIONS	TOTAL LTC DEATHS	LTC CREMATION RATE
2017	12386	18669	66.72%
2018	12838	18204	71.51%
2019 (1 Jan to 1 Oct)	9439	13365	70.62%
2020 (15 April to 31 May)	2444	3766	64.90%

Supplement Figure 2. Number of cremations in 2020 by month in the bar and the projected numbers of cremations with 95% confidence intervals derived from the time series model.



Supplement Figure 3: Monthly cremation by facility compared to averages for 2017-2019.

