

S1 File: Supplementary Figures and Tables

Heterogeneity in response to serological exposure markers of recent *Plasmodium vivax* infections in contrasting epidemiological contexts

Jason Rosado, Michael T. White, Rhea J. Longley, Marcus Lacerda, Wuelton Monteiro, Jessica Brewster, Jetsumon Sattabongkot, Mitchel Guzman-Guzman, Alejandro Llanos-Cuentas, Joseph M. Vinetz, Dionicia Gamboa, Ivo Mueller

Study design

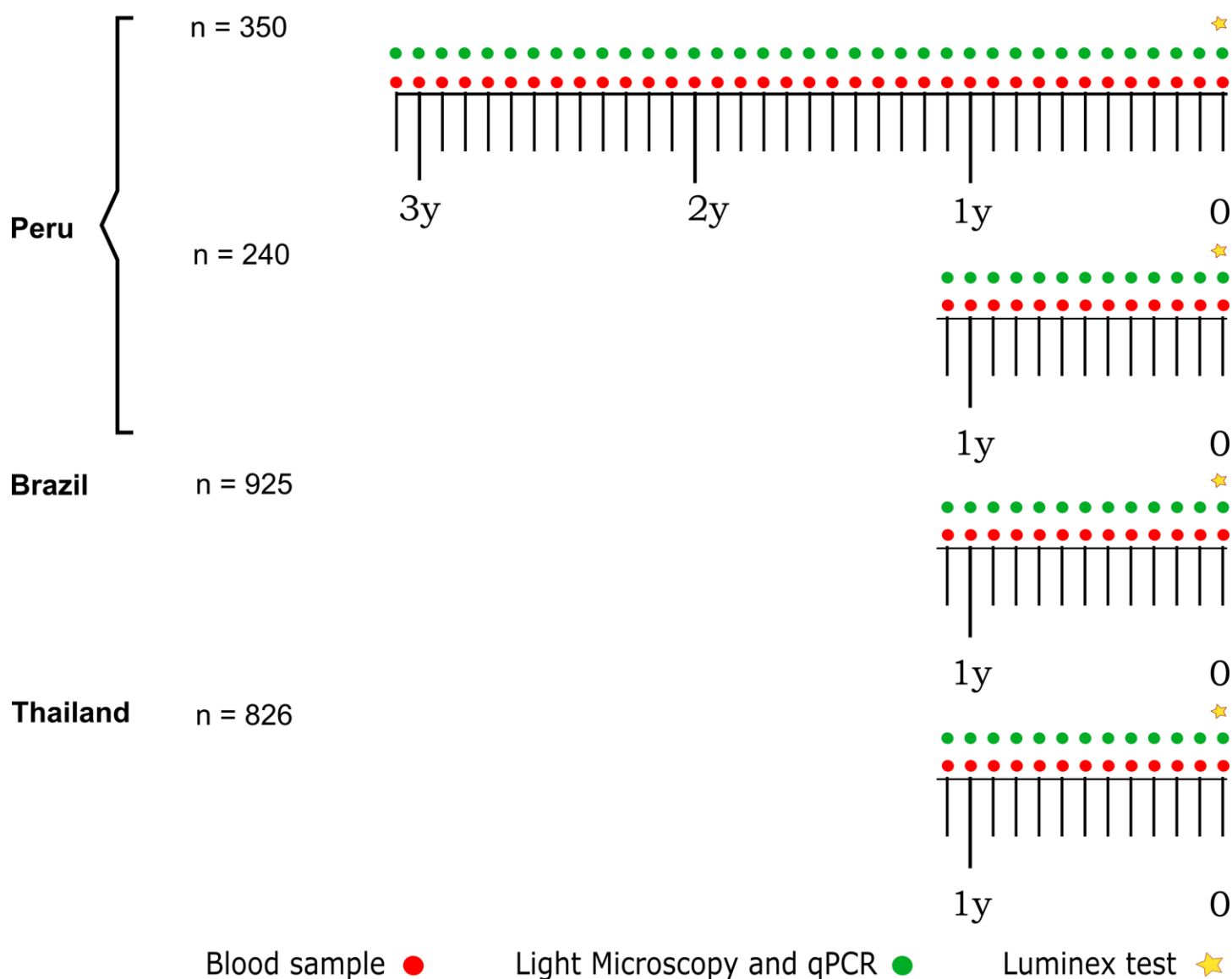


Fig I. Study design for the retrospective analysis of 13 months of follow-up. Five hundred ninety (590) individuals from the Peruvian cohort were included from which 350 were followed up to 37 months, and 240 individuals were followed for the last 13 months of the study. For the Brazilian (13 months) and Thailand (14 months) cohort, 925 and 826 individuals were included. In the three cohorts, a monthly blood sample was taken for diagnosis by light microscopy and qPCR. "0" denotes the last time point of following up where a serum sample was taken for Luminex assay.

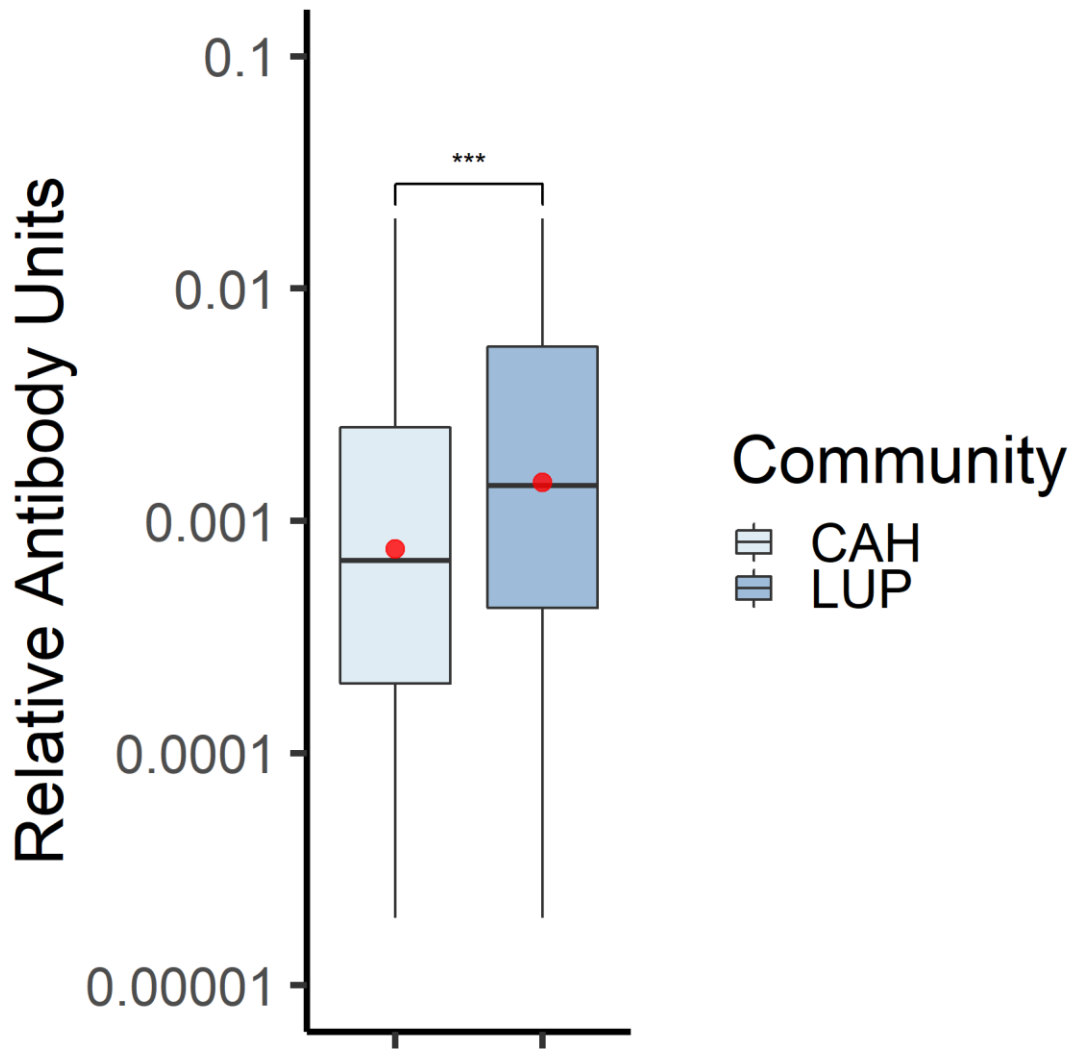


Fig II. Distribution of antibody responses to 34 Serological markers of exposure in the Peruvian communities of Cahuide (CAH) and Lupuna (LUP). Red dot indicates geometric mean titer (GMT) in each group. *** = significant difference between GMT of CAH and LUP, $p < 0.001$, t-test.

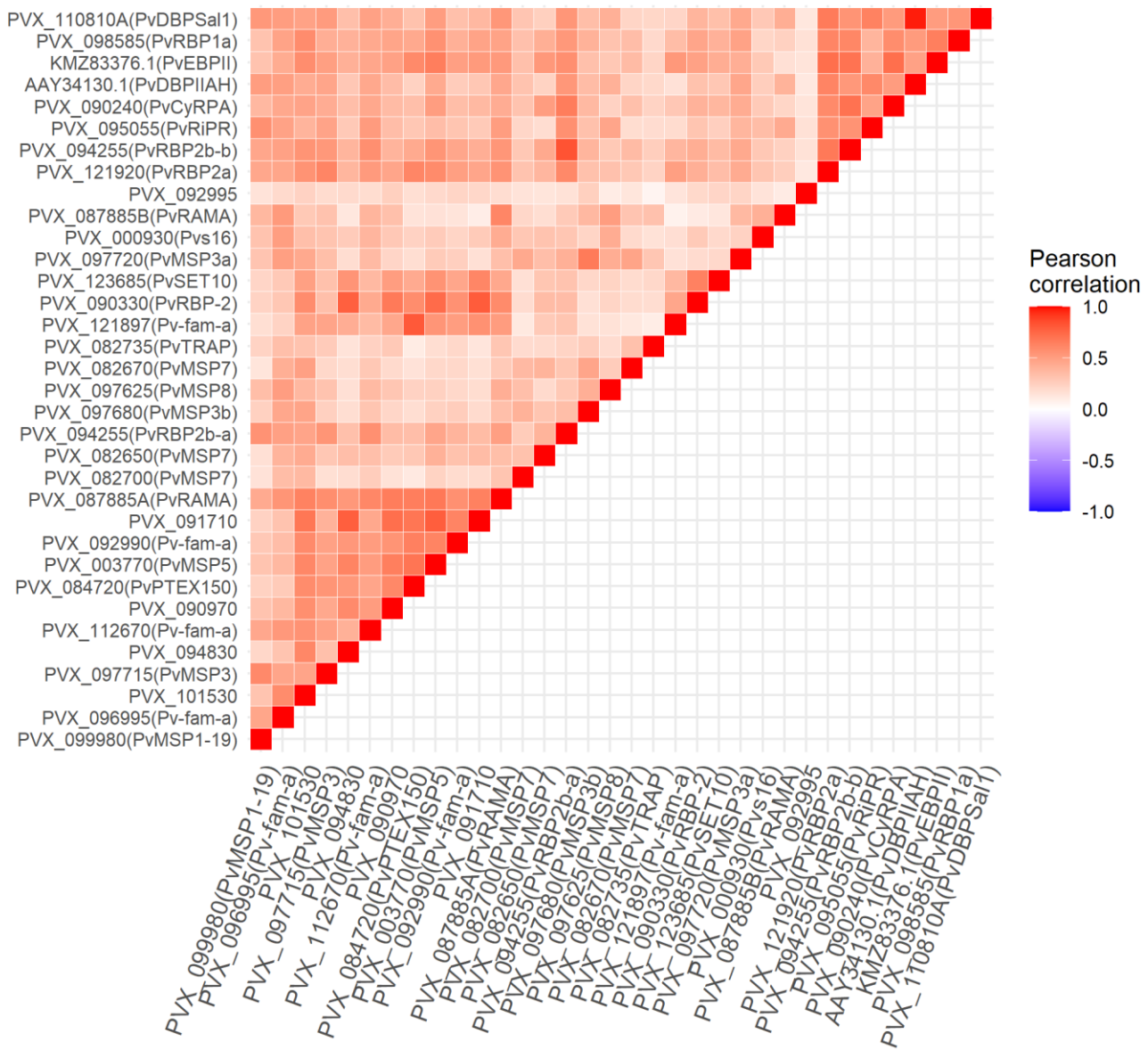


Fig III. Pearson correlation between antibody responses to 34 Serological markers of exposure in the Peruvian cohort.

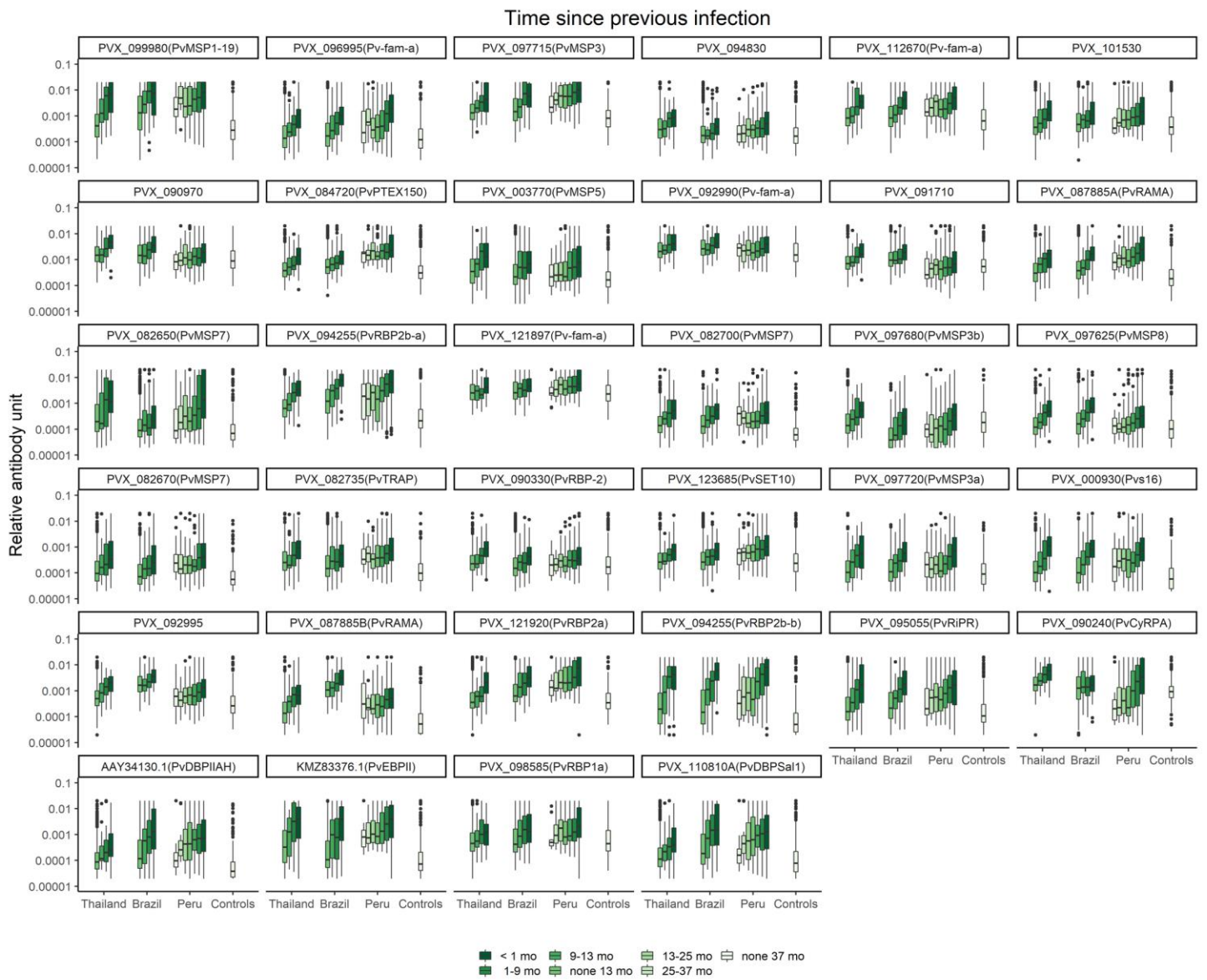


Fig IV. Association between antibody responses to 34 *P. vivax* antigens and time since previous *P. vivax* blood-stage infection. Mo: number of months since previous infection.

Blood stage infections

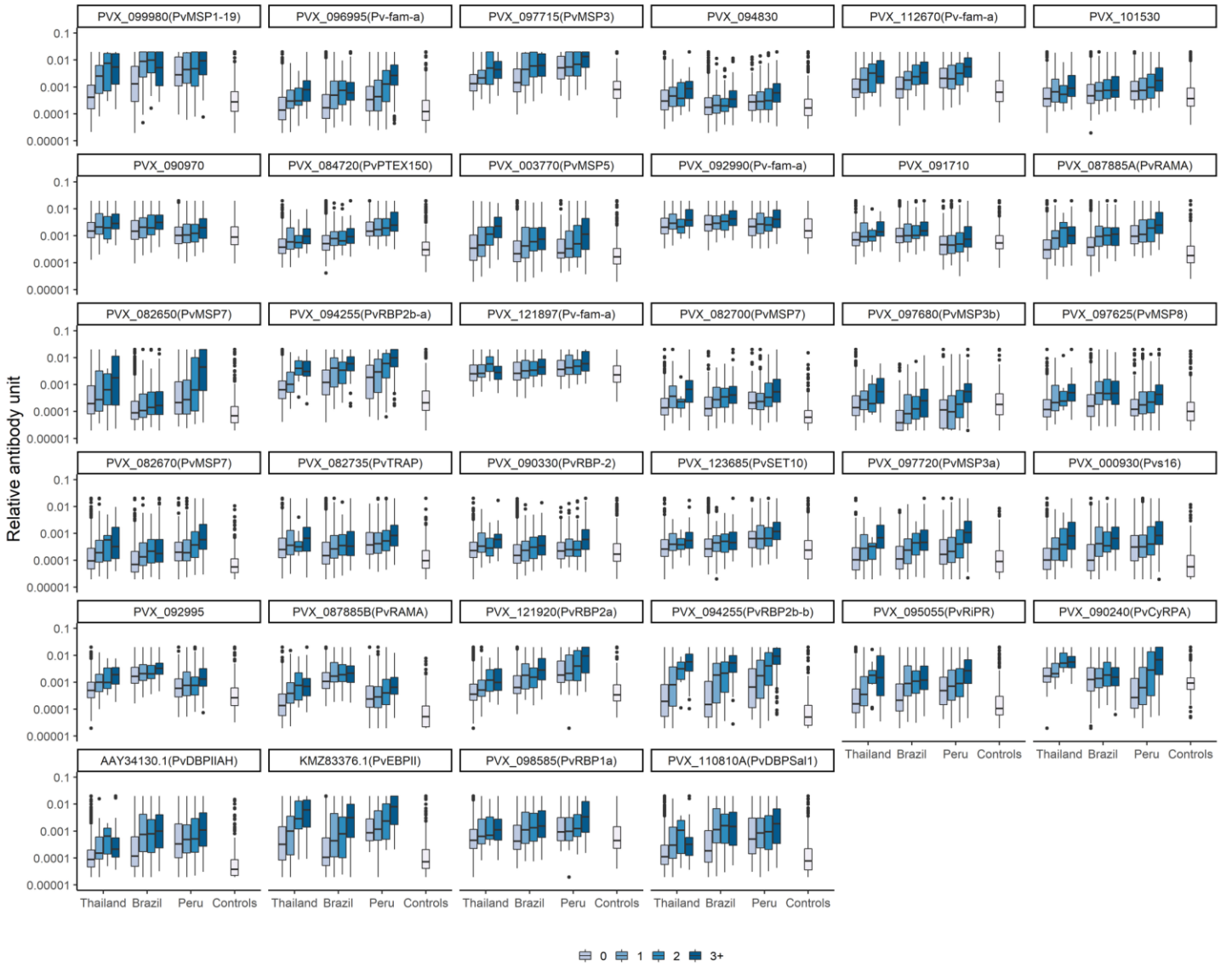


Fig V. Association between antibody responses to 34 *P. vivax* antigens and number of blood stage infections detected by qPCR.

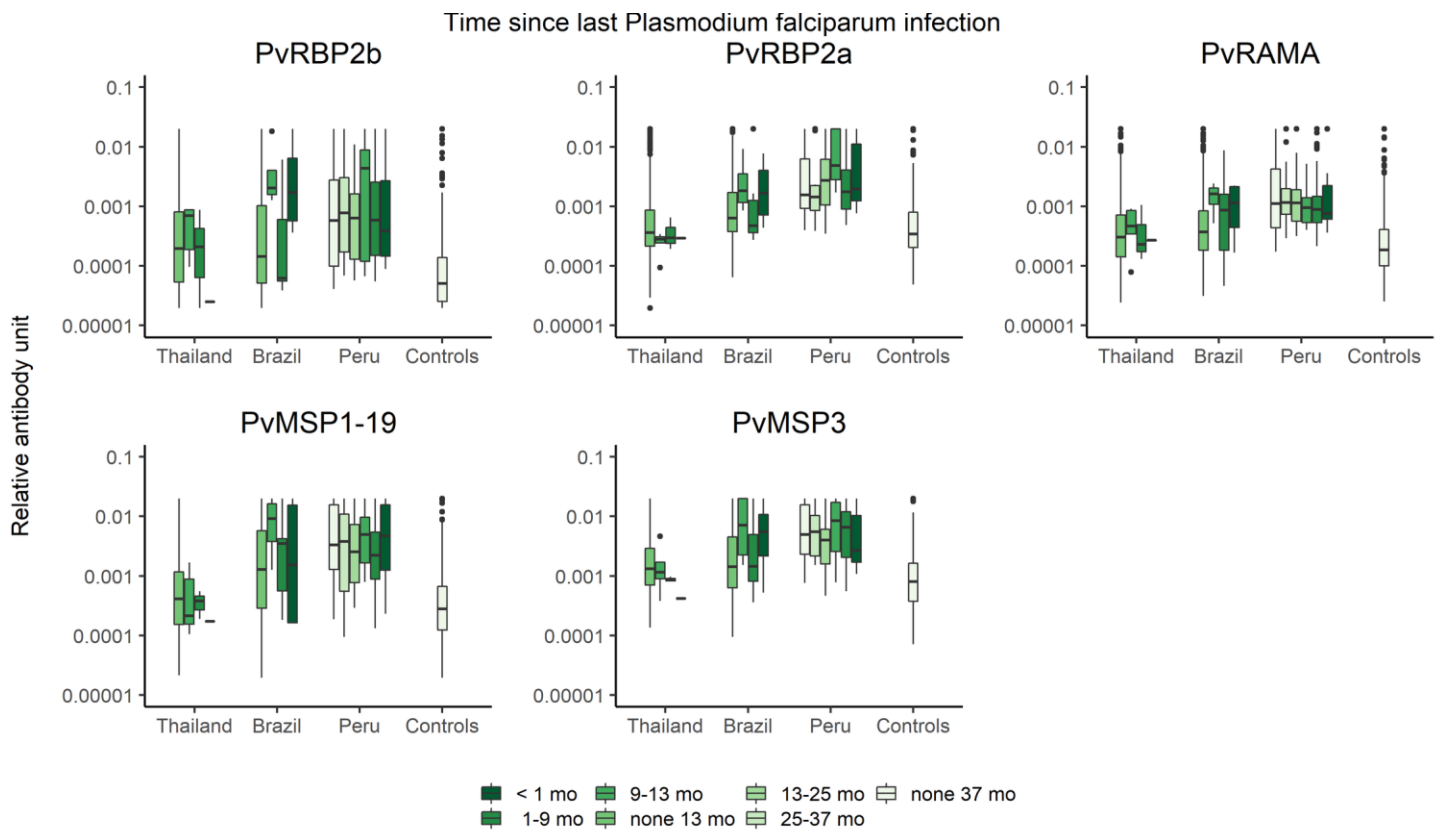


Fig VII. Association between antibody responses to top five *P. vivax* antigens and time since last *P. falciparum* blood-stage infections. Antibodies responses to PvrBP2b (PVX_094255), PvrBP2 (PVX_121920), PvrAMA (PVX_087885), PvMSP1₁₉ (PVX_099980) and PvMSP3 (PVX_097715, hypothetical PvMSP3). Note that all individuals with at least one *P. vivax* infection were removed from the analysis. There were not significant differences between individuals with *P. falciparum* PCR detection in the last 9 months and people with no *P. falciparum* infection.

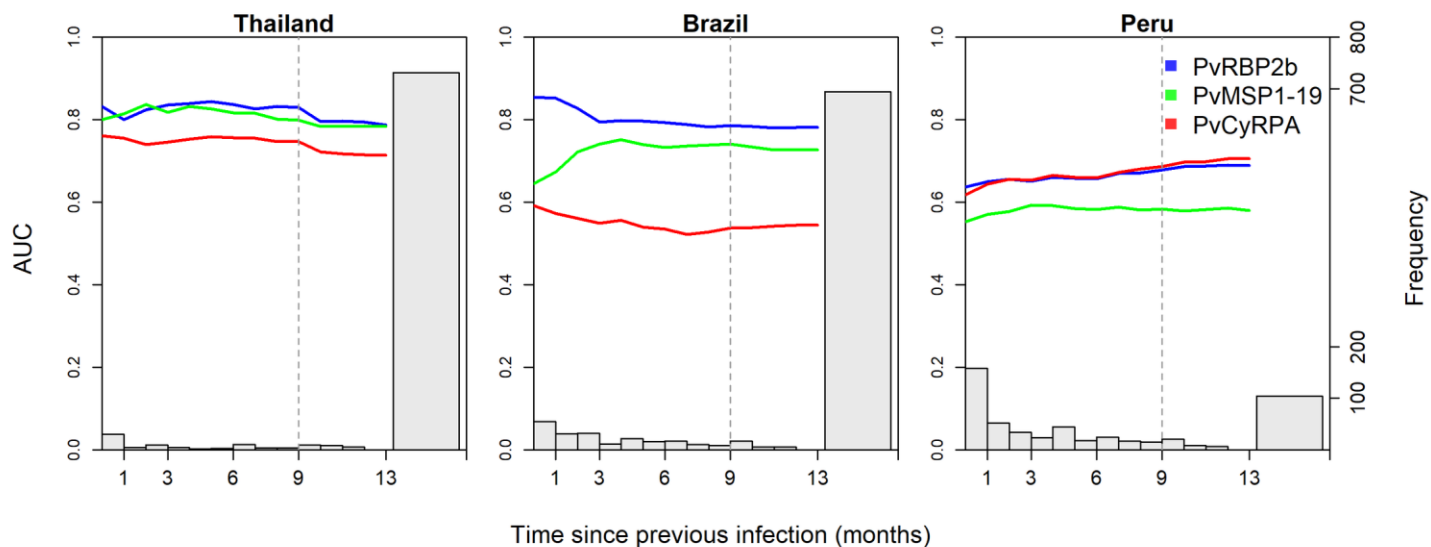


Fig VIII. Association of diagnostic performance of antibody responses in different timeframes with the distribution of time since the previous infection. Area under the ROC curve (AUC) values were calculated using data of single antibody responses to PVX_094255 (PvRBP2b), PVX_090240 (PvCyRPA) and PVX_099980 (PvMSP1₁₉) to detect infections in each timeframe. Grey bars indicate the frequency of time since previous *P. vivax* infection in each study site.

Table I. Association of antibody responses with current *P. vivax* infection in the Peruvian cohort.

Antibody response	Odds ratio, 95% CI
PVX_099980	1.27 (0.93,1.74)¥
PVX_096995	1.64 (1.26,2.13)***
PVX_101530	1.43 (1.04,1.98)*
PVX_097715	1.59 (1.02,2.49)*
PVX_094830	1.55 (1.08,2.22)*
PVX_112670	1.99 (1.35,2.92)***
PVX_090970	1.75 (1.18,2.59)**
PVX_084720	1.62 (1.07,2.43)*
PVX_003770	1.41 (1.06,1.88)*
PVX_092990	1.73 (1.11,2.69)*
PVX_091710	1.42 (1,2.01)¥
PVX_087885	1.59 (1.11,2.27)*
PVX_082700	1.27 (0.91,1.76)¥
PVX_082650	1.38 (1.12,1.7)**
PVX_094255	1.62 (1.2,2.18)**
PVX_097680	1.51 (1.16,1.96)**
PVX_097625	1.34 (1,1.79)¥
PVX_082670	1.29 (0.98,1.71)¥
PVX_082735	1.99 (1.42,2.79)***
PVX_121897	1.71 (1.04,2.81)*
PVX_090330	1.50 (1.02,2.19)*
PVX_123685	1.48 (1.04,2.1)*
PVX_097720	1.60 (1.22,2.08)**
PVX_000930	1.49 (1.13,1.96)**
PVX_000930	1.82 (1.28,2.59)**
PVX_092995	1.24 (0.9,1.7)¥
PVX_121920	1.71 (1.19,2.46)**
PVX_094255B	1.79 (1.37,2.35)***
PVX_095055	1.46 (1.12,1.89)**
PVX_090240	1.64 (1.29,2.09)***
AAY34130.1	1.17 (0.92,1.5)¥
KMZ83376.1	1.43 (1.06,1.93)*
PVX_098585	1.56 (1.14,2.14)**
PVX_110810A	1.19 (0.93,1.53)¥

95% CI = 95% confidence interval. ¥ : Not significant. *: $p < 0.05$, **: $p < 0.01$, ***: $p < 0.001$.

Table II. Multivariate linear regression model explaining the antibody level in the Peruvian cohort. The model was corrected by age, community, gender, *P. vivax* infections in the last 6 months, *P. vivax* infections in the initial 7 months, clinical infections in the last 6 months, education level, time living in the community and working as a farmer.

	Age, Log10	Community (Ref = Cahuide)	Gender (Ref = Female)	Number of qPCR +ve last 6 months [‡]	Number of qPCR +ve initial 7 months [¶]	Number of clinical <i>P.</i> <i>vivax</i> episodes last 6 months	Education (Ref = No education)		Time in community (years)	Working as farmer
	Coefficient 95% CI	Coefficient 95% CI	Coefficient 95% CI	Coefficient 95% CI	Coefficient 95% CI	Coefficient 95% CI	Coefficient 95% CI	Coefficient 95% CI	Coefficient 95% CI	Coefficient 95% CI
PVX_099980	0.420*** 0.267, 0.572			0.094*** 0.055, 0.134		0.416** 0.178, 0.654				
PVX_096995	0.861*** 0.705, 1.017	0.305*** 0.197, 0.414		0.167*** 0.126, 0.207		0.384** 0.129, 0.640				
PVX_101530	0.242** 0.072, 0.413		0.157** 0.066, 0.247	0.069*** 0.032, 0.106				0.007** 0.003, 0.010		
PVX_097715	0.336*** 0.233, 0.439	0.096** 0.024, 0.168		0.061*** 0.031, 0.090						
PVX_094830	0.374*** 0.251, 0.496	0.175*** 0.094, 0.255	0.122** 0.040, 0.203	0.060** 0.023, 0.098						
PVX_112670	0.396*** 0.277, 0.515		0.105* 0.023, 0.186	0.109*** 0.076, 0.142						
PVX_090970	0.280*** 0.161, 0.398		0.112** 0.033, 0.191	0.056** 0.023, 0.088						
PVX_084720	0.242*** 0.136, 0.349		0.144*** 0.069, 0.219		0.040** 0.010, 0.070					
PVX_003770	0.705*** 0.556, 0.853	0.219*** 0.113, 0.324			0.073** 0.031, 0.115					
PVX_092990	0.257*** 0.150, 0.364			0.062*** 0.033, 0.092						

PVX_091710		0.175*** 0.089, 0 .262	0.136** 0.049, 0.223		0.115● -0.003, 0.232	0.189** 0.059, 0.320	0.193** 0.074, 0.312
PVX_087885	0.320*** 0.197, 0.443	0.125** 0.041, 0.210	0.145** 0.062, 0.228	0.074*** 0.038, 0.109			
PVX_082700	0.514*** 0.385, 0.642	0.200*** 0.107, 0.293			0.068** 0.024, 0.111		
PVX_082650	1.127*** 0.950, 1.305	0.538*** 0.411, 0.666	0.177** 0.060, 0.294	0.106** 0.046, 0.166	0.118*** 0.068, 0.167		
PVX_094255A	0.709*** 0.556, 0.861	0.400*** 0.297, 0.502		0.138*** 0.100, 0.177	0.505*** 0.284, 0.727		
PVX_097680	0.659*** 0.500, 0.818	0.234*** 0.126, 0.342	0.202*** 0.096, 0.307	0.177*** 0.130, 0.224			
PVX_097625				0.099*** 0.056, 0.143		0.009*** 0.005, 0.012	
PVX_082670	0.515*** 0.337, 0.694	0.204*** 0.091, 0.316	0.156** 0.057, 0.255	0.095*** 0.051, 0.139		0.006** 0.001, 0.010	
PVX_082735	0.505*** 0.377, 0.633			0.106*** 0.064, 0.149			
PVX_121897	0.146** 0.056, 0.236		0.130*** 0.066, 0.193	0.042** 0.015,0.069			
PVX_090330	0.403*** 0.290, 0.517	0.145*** 0.064, 0.226	0.143*** 0.067, 0.219		0.059** 0.024, 0.092		
PVX_123685	0.291*** 0.164, 0.417	0.135** 0.044, 0.227	0.126** 0.039, 0.212		0.050** 0.015, 0.085		
PVX_097720	0.756*** 0.600, 0.912	0.226*** 0.116, 0.335		0.159*** 0.114, 0.204	0.063** 0.020, 0.107		
PVX_000930	0.515***	0.247***		0.112***			

	0.361, 0.670	0.138, 0.356		0.068, 0.157	
PVX_095055	0.524***	0.214***		0.133***	0.504**
	0.355, 0.693	0.095, 0.332		0.082, 0.185	0.187, 0.821
PVX_090240	1.062***	0.466***		0.174***	0.073**
	0.901, 1.222	0.352, 0.581		0.127, 0.221	0.028, 0.118
PVX_110810A	0.627***			0.083**	
	0.449, 0.805			0.029, 0.136	
AAY34130.1	0.667***			0.080**	
	0.491, 0.843			0.027, 0.134	
KMZ83376.1	0.761***	0.268***		0.071***	0.078***
	0.624, 0.897	0.172, 0.363		0.031, 0.111	0.038, 0.118
PVX_098585	0.613***	0.129***	0.169***	0.072**	0.055**
	0.482, 0.745	0.034, 0.223	0.080, 0.259	0.029, 0.115	0.014, 0.095
PVX_121920	0.512***			0.094***	
	0.390, 0.633			0.058, 0.129	
PVX_094255B	0.917***	0.502***		0.194***	0.449***
	0.750, 1.083	0.388, 0.616		0.154, 0.234	0.204, 0.693
PVX_087885	0.446***	0.201***		0.074***	0.419**
	0.309, 0.583	0.105, 0.297		0.037, 0.111	0.159, 0.679
PVX_092995	0.264***		0.173***	0.093***	
	0.135, 0.393		0.086, 0.260	0.060, 0.126	

A clinical episode was defined by having a temperature of $\geq 38.0^{\circ}\text{C}$ at the time of sample collection or having fever in the past 48 hours and parasite density >500 parasites/uL. \ddagger : Number of *P. vivax* positive qPCR results within the last six months of following up. Concurrent *P. vivax* infections were included in the variable Number of *P. vivax* positive qPCR results within the last six months of following up. \S : Number of *P. vivax* positive qPCR results the initial seven months of following up. 95% CI: 95% confidence interval. * $p < 0.05$; ** $p < 0.01$; *** $p < 0.001$.

Table III. Epidemiologic characteristics of the study sites and participants.

Characteristics	Thailand n = 826	Brazil n = 925	Peru n = 590
Age (median, range)	24.0 (1.00 - 78.0)	25.37 (0.01 - 102.64)	26.0 (3.80 - 85.57)
<15 years old (%)	40.68	37.84	35.93
15-39 years old (%)	32.32	30.05	32.54
≥40 years old (%)	27.00	32.11	31.53
Female sex (%)	54.6	50.59	58.30
Forest-related occupation (≥18 years old) (%) [‡]			
Farmer/Fishing ^{a,c}	33.17	14.55	38.32
Infection by qPCR at D0 [†]			
<i>P. vivax</i> (%) ^{a,b}	3.03	4.22	21.19
<i>P. falciparum</i> (%) ^{a,b}	0.24	0.43	2.71
Months of follow-up, <i>n</i>	14	13	13/37 [#]
Total clinical <i>P. vivax</i> infections, <i>n</i> (%)			
0 ^{c,d}	801 (96.97)	846 (91.46)	562 (95.25)
1 ^c	22 (2.66)	56 (6.05)	26 (4.41)
≥2 ^{c,d}	3 (0.36)	23 (2.49)	2 (0.34)
Total <i>P. vivax</i> infections by qPCR in 13 months, <i>n</i> (%)			
0 ^{a,b}	729 (88.26)	690 (74.59)	146(24.74)
1 ^{a,b}	41 (4.96)	98 (10.60)	170 (28.81)
2 ^{a,b}	10 (1.21)	54 (5.84)	117 (19.83)
≥3 ^{a,b}	46 (5.57)	83 (8.97)	157 (26.61)
Days since last past <i>P. vivax</i> infection, <i>n</i> (%)			
< 1 month ^{a,b}	30 (3.63)	55 (5.95)	160 (27.12)
1-9 months ^{a,b}	42 (5.08)	149 (16.11)	228 (38.64)
9-13 months ^{a,b}	25 (3.03)	31 (3.35)	56 (9.49)
No infection in 13 months ^{a,b}	729 (88.26)	690 (74.59)	146 (24.74)

[‡] Occupation in Peru: Farmer (30.83%), fishing (1.73%), woodcutter (5.76%). [#]: Individuals followed for 13 months (n=240), individuals followed for 37 months (n=350). ^a: Significant differences between Thailand and Peru, p<0.05; ^b: Significant differences between Brazil and Peru, p<0.05; ^c: Significant differences between Thailand and Brazil, p<0.05; ^d: Significant differences between Brazil and Peru, p<0.05. [†] Prevalence includes single - and mixed-species infections.

Table IV. Characteristic of evaluated constructs.

Protein ID ^a	Gene Annotation ^a	AUC				Combined data set	Rank
		Thailand	Brazil	Peru	Average		
PVX_094255B	reticulocyte binding protein 2b (RBP2b)	0.83	0.79	0.68	0.77	0.80	1
PVX_121920	reticulocyte binding protein 2a (RBP2a)	0.69	0.70	0.61	0.67	0.77	2
PVX_087885B	rhoptry-associated membrane antigen, putative	0.74	0.72	0.61	0.69	0.76	3
PVX_099980	merozoite surface protein 1 (MSP1-19)	0.80	0.74	0.58	0.71	0.76	4
PVX_097715	hypothetical protein	0.72	0.73	0.59	0.68	0.76	5
KMZ83376.1 ^b	erythrocyte binding protein II (PvEBPII)	0.76	0.72	0.62	0.70	0.75	6
PVX_000930	sexual stage antigen s16, putative	0.77	0.75	0.63	0.72	0.75	7
PVX_094255A	reticulocyte binding protein 2b (RBP2b)	0.79	0.72	0.66	0.72	0.75	8
PVX_096995	tryptophan-rich antigen (Pv-fam-a)	0.74	0.71	0.66	0.70	0.75	9
PVX_084720	translocon component PTEX150, putative	0.72	0.62	0.56	0.64	0.74	10
AAV34130.1b	Duffy binding protein (DBP, region 2, AH strain)	0.71	0.73	0.58	0.67	0.74	11
PVX_095055	Rh5 interacting protein, putative (RIPR)	0.74	0.75	0.62	0.70	0.74	12
PVX_112670	unspecified product	0.75	0.72	0.62	0.69	0.73	13
PVX_110810A	Duffy binding protein (DBP, region 2, Sal1 strain)	0.70	0.73	0.58	0.67	0.73	14
PVX_097720	merozoite surface protein 3 (MSP3.10)	0.78	0.71	0.65	0.72	0.72	15
PVX_082670	merozoite surface protein 7 (MSP7), putative	0.70	0.68	0.63	0.67	0.71	16
PVX_082700	merozoite surface protein 7 (MSP7.1)	0.72	0.70	0.61	0.68	0.70	17
PVX_098585	reticulocyte binding protein 1a (RBP1a)	0.67	0.67	0.59	0.64	0.69	18
PVX_097625	merozoite surface protein 8 (MSP8), putative	0.76	0.72	0.63	0.70	0.68	19
PVX_123685	histone-lysine N-methyltransferase, H3 lysine-4 specific (SET10), putative	0.68	0.61	0.56	0.62	0.68	20
PVX_097680	merozoite surface protein 3 (MSP3.3)	0.72	0.72	0.63	0.69	0.66	21
PVX_101530	Plasmodium exported protein, unknown function	0.69	0.59	0.58	0.62	0.65	22
PVX_082735	thrombospondin-related anonymous protein (TRAP)	0.66	0.63	0.59	0.63	0.65	23
PVX_082650	merozoite surface protein 7 (MSP7), putative	0.69	0.59	0.64	0.64	0.65	24
PVX_003770	merozoite surface protein 5 (MSP5)	0.73	0.65	0.61	0.66	0.64	25
PVX_121897	tryptophan-rich antigen (Pv-fam-a)	0.55	0.57	0.56	0.56	0.62	26
PVX_087885A	rhoptry associated membrane antigen, putative	0.78	0.66	0.61	0.68	0.62	27
PVX_090330	reticulocyte binding protein 2 precursor (PvRBP-2), putative	0.71	0.61	0.58	0.63	0.62	28
PVX_092995	tryptophan-rich antigen (Pv-fam-a)	0.77	0.62	0.60	0.67	0.61	29
PVX_092990	tryptophan-rich antigen (Pv-fam-a)	0.66	0.59	0.60	0.61	0.59	30
PVX_094830	hypothetical protein, conserved	0.69	0.58	0.58	0.62	0.59	31
PVX_090240	cysteine-rich protective antigen, putative (CyRPA)	0.75	0.54	0.69	0.66	0.58	32

PVX_090970	hypothetical protein, conserved	0.69	0.61	0.55	0.62	0.55	33
PVX_091710	hypothetical protein, conserved	0.72	0.58	0.56	0.62	0.52	34

^aPlasmoDB release 36 (<http://plasmodb.org/plasmo/>), ^bGenBank

References

- 1 J. Hietanen, A. Chim-Ong, T. Chiramanewong, J. Gruszczyk, W. Roobsoong, W. H. Tham, J. Sattabongkot, W. Nguitragool, Gene Models, Expression Repertoire, and Immune Response of Plasmodium vivax Reticulocyte Binding Proteins. *Infect Immun* **84**, 677-685 (2015).
- 2 F. Lu, J. Li, B. Wang, Y. Cheng, D. H. Kong, L. Cui, K. S. Ha, J. Sattabongkot, T. Tsuboi, E. T. Han, Profiling the humoral immune responses to Plasmodium vivax infection and identification of candidate immunogenic rhoptry-associated membrane antigen (RAMA). *J Proteomics* **102**, 66-82 (2014).
- 3 J. Healer, J. K. Thompson, D. T. Riglar, D. W. Wilson, Y. H. Chiu, K. Miura, L. Chen, A. N. Hodder, C. A. Long, D. S. Hansen, J. Baum, A. F. Cowman, Vaccination with conserved regions of erythrocyte-binding antigens induces neutralizing antibodies against multiple strains of Plasmodium falciparum. *PLoS One* **8**, e72504 (2013).
- 4 J. L. Cole-Tobian, P. Michon, M. Biasor, J. S. Richards, J. G. Beeson, I. Mueller, C. L. King, Strain-specific duffy binding protein antibodies correlate with protection against infection with homologous compared to heterologous plasmodium vivax strains in Papua New Guinean children. *Infect Immun* **77**, 4009-4017 (2009).
- 5 C. T. Franca, M. T. White, W. Q. He, J. B. Hostetler, J. Brewster, G. Frato, I. Malhotra, J. Gruszczyk, C. Huon, E. Lin, B. Kiniboro, A. Yadava, P. Siba, M. R. Galinski, J. Healer, C. Chitnis, A. F. Cowman, E. Takashima, T. Tsuboi, W. H. Tham, R. M. Fairhurst, J. C. Rayner, C. L. King, I. Mueller, Identification of highly-protective combinations of Plasmodium vivax recombinant proteins for vaccine development. *Elife* **6**, (2017).

Table V. Top antibody responses for classifying recent infections.

Country	Rank	Single antibody response model	AUC
Thailand	1	PVX_094255B	0.83
	2	PVX_099980	0.80
	3	PVX_094255A	0.79
	4	PVX_097720	0.78
	5	PVX_087885A	0.78
	6	PVX_000930	0.77
	7	PVX_092995	0.77
	8	KMZ83376.1	0.76
	9	PVX_097625	0.76
Brazil	1	PVX_094255B	0.79
	2	PVX_000930	0.75
	3	PVX_095055	0.75
	4	PVX_099980	0.74
	5	PVX_097715	0.73
	6	AAV34130.1	0.73
	7	PVX_110810A	0.73
	8	PVX_087885	0.72
Peru	1	PVX_090240	0.69
	2	PVX_094255B	0.68
	3	PVX_096995	0.66
	4	PVX_094255A	0.66
	5	PVX_097720	0.65
	6	PVX_082650	0.64
	7	PVX_082670	0.63
	8	PVX_000930	0.63
	9	PVX_097680	0.63

Abbreviations: AUC = Area under the ROC curve.

Table VI. Geometric mean titer of 34 SEM across the study sites.

Antibody response	Negative controls			Thailand			Brazil			Peru		
	GMT*	95% CI*		GMT	95% CI		GMT	95% CI		GMT	95% CI	
PVX_099980	0.33	0.04	17.19	0.59	0.04	20.00	1.80	0.06	20.00	4.02	0.14	20.00
PVX_096995	0.16	0.02	8.35	0.19	0.02	5.50	0.29	0.03	7.59	0.89	0.04	20.00
PVX_101530	0.49	0.08	20.00	1.62	0.24	20.00	2.31	0.21	20.00	6.35	0.85	20.00
PVX_097715	0.88	0.13	20.00	0.38	0.06	5.27	0.24	0.04	4.49	0.39	0.06	7.76
PVX_094830	0.21	0.04	9.38	1.08	0.16	20.00	1.30	0.13	20.00	2.96	0.28	20.00
PVX_112670	0.81	0.12	20.00	0.50	0.09	8.13	0.70	0.11	20.00	1.20	0.18	20.00
PVX_090970	1.17	0.14	20.00	1.83	0.39	20.00	1.88	0.24	20.00	1.40	0.21	19.78
PVX_084720	0.39	0.09	12.68	0.49	0.11	5.89	0.70	0.14	12.39	2.40	0.52	20.00
PVX_003770	0.21	0.03	7.95	0.43	0.04	10.33	0.36	0.03	12.55	0.62	0.07	20.00
PVX_092990	1.91	0.30	20.00	2.57	0.53	20.00	3.21	0.59	20.00	2.95	0.52	20.00
PVX_091710	0.70	0.14	20.00	0.86	0.20	10.28	1.25	0.25	20.00	0.63	0.10	14.30
PVX_087885	0.23	0.04	9.77	0.40	0.06	8.81	0.56	0.08	12.98	1.77	0.26	20.00
PVX_082700	0.07	0.02	1.25	0.34	0.03	20.00	0.15	0.02	7.58	0.77	0.04	20.00
PVX_082650	0.09	0.02	6.30	0.80	0.08	15.12	1.66	0.12	20.00	3.00	0.10	20.00
PVX_094255	0.32	0.04	20.00	2.89	0.59	20.00	3.39	0.69	20.00	5.10	1.11	20.00
PVX_097680	0.22	0.02	8.88	0.19	0.03	3.45	0.20	0.03	3.24	0.38	0.06	10.20
PVX_097625	0.12	0.02	3.98	0.19	0.02	3.84	0.07	0.02	1.80	0.19	0.02	7.91
PVX_082670	0.07	0.02	1.57	0.16	0.03	2.54	0.25	0.03	6.38	0.27	0.02	12.50
PVX_082735	0.13	0.02	2.02	0.15	0.02	5.09	0.12	0.02	3.60	0.39	0.03	20.00
PVX_121897	2.56	0.39	20.00	0.32	0.04	6.05	0.24	0.03	7.92	0.59	0.06	12.91
PVX_090330	0.23	0.04	9.40	0.29	0.06	3.37	0.22	0.03	4.87	0.36	0.07	5.75
PVX_123685	0.28	0.04	9.04	0.33	0.06	4.17	0.36	0.05	5.96	0.88	0.11	17.22
PVX_097720	0.10	0.02	2.66	0.14	0.02	2.89	0.17	0.02	3.22	0.38	0.02	11.58
PVX_000930	0.08	0.02	3.68	0.15	0.02	4.44	0.20	0.02	7.20	0.50	0.03	18.08
PVX_090240	1.02	0.20	20.00	2.12	0.49	20.00	1.38	0.09	20.00	1.30	0.06	20.00
PVX_110810A	0.12	0.02	10.19	0.17	0.02	7.78	0.44	0.03	20.00	0.98	0.04	20.00
AAY34130.1	0.06	0.02	4.42	0.13	0.02	4.16	0.28	0.02	20.00	0.70	0.04	20.00
KMZ83376.1	0.11	0.02	7.47	0.44	0.02	17.25	0.29	0.02	20.00	2.17	0.22	20.00
PVX_095055	0.16	0.02	12.30	0.27	0.02	15.81	0.42	0.03	13.40	0.99	0.05	20.00
PVX_098585	0.62	0.08	17.12	0.60	0.08	14.58	0.80	0.09	20.00	1.74	0.21	20.00
PVX_121920	0.49	0.09	20.00	0.53	0.09	18.89	1.12	0.16	20.00	3.64	0.46	20.00
PVX_094255B	0.08	0.02	6.65	0.28	0.02	12.24	0.40	0.02	18.75	1.96	0.06	20.00
PVX_087885A	0.07	0.02	1.76	0.59	0.07	5.96	2.15	0.36	20.00	0.95	0.11	17.62
PVX_092995	0.33	0.04	10.12	0.18	0.02	4.15	1.51	0.22	20.00	0.42	0.03	9.20

Abbreviations: GMT = Geometric mean titer; 95% CI = 95% confidence interval. *IgG levels multiplied by 1000. Values are in relative antibody units interpolated from standard curves using a 5PL logistic regression model.

Table VII. Correlation between antibody titers and age.

Antibody response	Thailand		Brazil		Peru	
	Spearman's rho	p value	Spearman's rho	p value	Spearman's rho	p value
PVX_099980	0.249	****	0.343	****	0.218	****
PVX_096995	0.231	****	0.343	****	0.428	****
PVX_101530	0.113	**	0.126	***	0.285	****
PVX_097715	0.218	****	0.315	****	0.290	****
PVX_094830	0.424	****	0.152	****	0.306	****
PVX_112670	0.297	****	0.228	****	0.283	****
PVX_090970	0.050	n.s	0.190	****	0.229	****
PVX_084720	0.124	***	0.104	**	0.228	****
PVX_003770	0.462	****	0.273	****	0.422	****
PVX_092990	0.013	n.s	0.146	****	0.210	****
PVX_091710	0.128	***	0.202	****	0.229	****
PVX_087885	0.236	****	0.240	****	0.248	****
PVX_082700	0.386	****	0.300	****	0.331	****
PVX_082650	0.494	****	0.118	***	0.482	****
PVX_094255	0.361	****	0.301	****	0.380	****
PVX_097680	0.124	***	0.284	****	0.347	****
PVX_097625	0.311	****	0.302	****	0.228	****
PVX_082670	0.477	****	0.310	****	0.391	****
PVX_082735	0.342	****	0.371	****	0.336	****
PVX_121897	-0.103	**	0.019	n.s	0.143	***
PVX_090330	0.124	***	0.263	****	0.330	****
PVX_123685	0.240	****	0.235	****	0.203	****
PVX_097720	0.363	****	0.285	****	0.408	****
PVX_000930	0.356	****	0.347	****	0.281	****
PVX_092995	0.292	****	0.132	****	0.200	****
PVX_087885A	0.390	****	0.173	****	0.293	****
PVX_121920	0.202	****	0.333	****	0.362	****
PVX_094255B	0.590	****	0.368	****	0.436	****
PVX_095055	0.350	****	0.319	****	0.270	****
PVX_090240	0.479	****	0.003	n.s	0.498	****
AAY34130.1	0.296	****	0.391	****	0.314	****
KMZ83376.1	0.615	****	0.359	****	0.466	****
PVX_098585	0.292	****	0.353	****	0.397	****
PVX_110810A	0.248	****	0.381	****	0.300	****

Abbreviations: n.s : not significant, **: p <0.01, *** : p <0.001, **** : p <0.0001

Table VIII. Overall antibody response and time since previous infection.

Site	1 month		1 - 9 month		9 - 13 month		No infection			<i>p</i> value
	GMT*	95% CI*	GMT	95% CI	GMT	95% CI	GMT	95% CI		
Negative controls							0.25	0.02	15.89	
Thailand	1.40	0.05 20.00	1.02	0.05 20.00	0.59	0.04 15.57	0.38	0.03	11.64	<0.001
Brazil	1.49	0.06 20.00	0.95	0.04 20.00	0.69	0.03 20.00	0.45	0.02	20.00	<0.001
Peru	1.50	0.05 20.00	1.14	0.05 20.00	0.87	0.04 20.00	0.69	0.04	20.00	<0.001

Abbreviations: GMT = Geometric mean titer; 95% CI = 95% confidence interval. * Data of relative antibody titers interpolated from standard curves were geometric mean with 95% confidence interval (CI). IgG levels were multiplied by 1000. Participants were categorized according to the time since last qPCR detection in the last year. Kruskal-Wallis test by ranks was used for analysing the variance among groups.

Table IX. Overall antibody response and number of detected blood- stage infections.

Site	No infection			1 infection			2 infections			> 2 infections			<i>p</i> value
	GMT*	95% CI*		GMT	95% range		GMT	95% CI		GMT	95% CI		
Negative controls	0.25	0.02	15.89										
Thailand	0.38	0.03	11.64	0.71	0.04	19.46	0.96	0.06	20.00	0.38	0.03	11.64	<0.001
Brazil	0.45	0.02	20.00	0.86	0.03	20.00	0.99	0.04	20.00	1.09	0.05	20.00	<0.001
Peru	0.69	0.04	20.00	1.30	0.07	20.00	1.24	0.05	20.00	1.98	0.09	20.00	<0.001

Abbreviations: GMT = Geometric mean titer; 95% CI = 95% confidence interval. * Data of relative antibody titers interpolated from standard curves were geometric mean with 95% confidence interval (CI). IgG levels were multiplied by 1000. Participants were categorized according to their number of qPCR detection in the last year. Kruskal-Wallis test by ranks was used for analysing the variance among groups.