

Supplemental information

Table S1. Alleles frequency information and data of additional countries analyzed considering the number of COVID-19 cases.

Country		Peru	Portugal	Romania	Pakistan
<i>cases</i>		115.754	30.471	17.857	221.896
<i>death</i>		3.373	1.302	1.176	4.551
<i>recovered</i>		47.915	7.705	11.187	
<i>active cases</i>		64.466	21.464	5.494	103.722
<i>closed cases</i> ^A		51.288	9.007	12.363	
<i>death:cases</i> ^B		34.85	23.73	15.18	48.75
<i>death: closed cases</i> ^B		15.20	6.92	10.51	25.97
<i>Death: 1 million people</i>		332	160	94	22
Alleles frequency ^C	<i>HLA-B*07</i>	0.0240	0.0612	0.0505	0.0364
	<i>HLA-B*44</i>	0.0428	0.1476	0.0803	0.0381
	<i>DRB1*03</i>	0.0298	0.1110	0.1111	0.2215
	<i>DRB1*04</i>	0.1743	0.1346	0.0896	0.0368
Population size reported ^D	<i>HLA-B*07</i>	168	64.591	8.753	623
	<i>HLA-B*44</i>	251	64.764	8.753	623
	<i>DRB1*03</i>	422	64.545	8.405	623
	<i>DRB1*04</i>	212	64.545	8.405	623

The data about reported cases and deaths was recovered from COVID-19 Dashboard by the Center for Systems Science and Engineering (CSSE) at Johns Hopkins University (Dong et al., 2020)- on July 03, 2020.

^A Closed cases number was calculated excluding the active ones from total cases.

^B Death per case ratios of each country are expressed as 1: X (one death in X cases) and the X values were specified in the table.

^C The allele's frequency for each HLA was obtained as a weighted average (considering the sample size) of all the populations reported in *the allele frequency net database* (<http://www.allelefreqencies.net/>) for each country.

^D Population size reported is the sum of the sample sizes included in the present study.

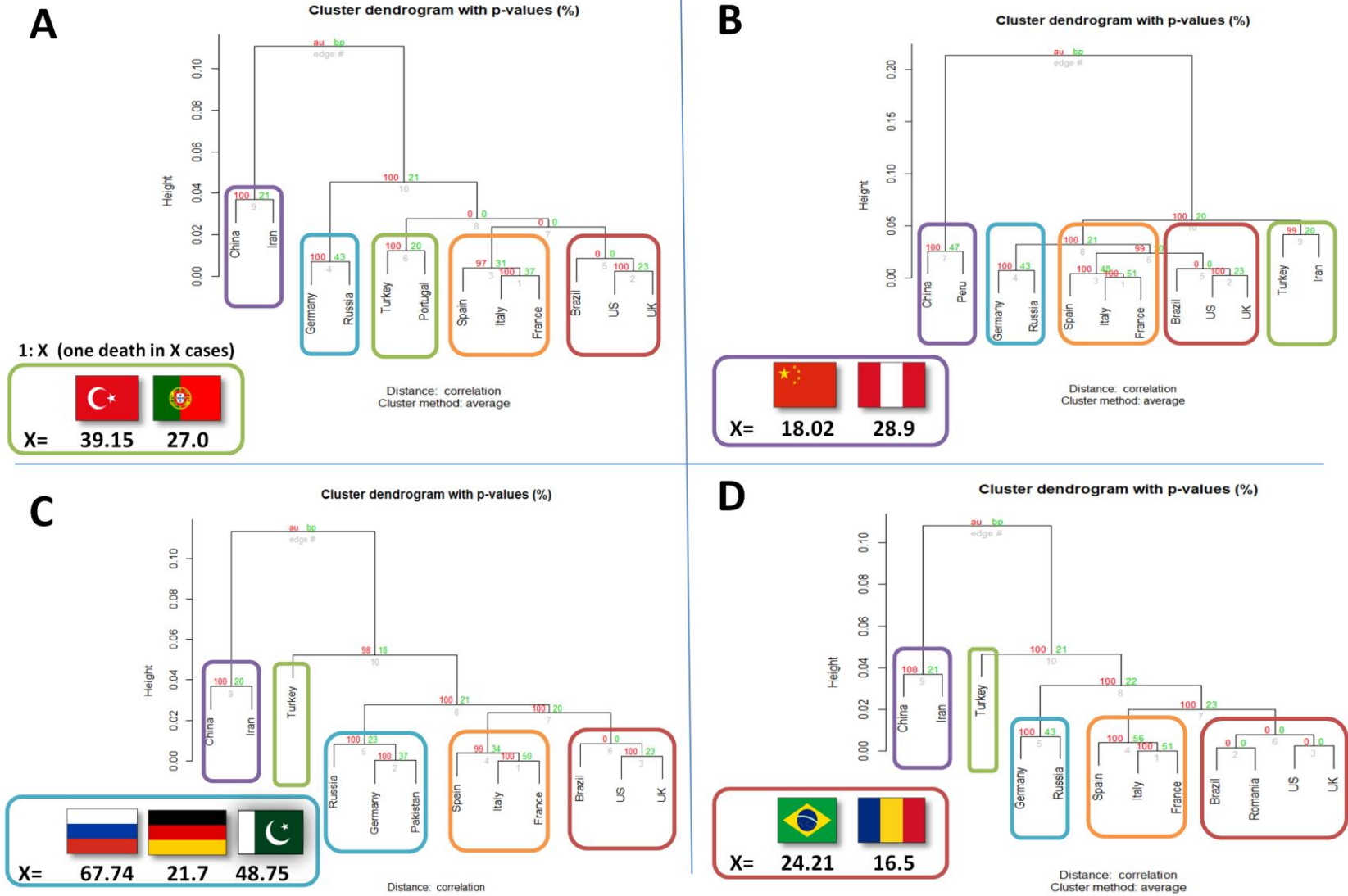


Figure S1.

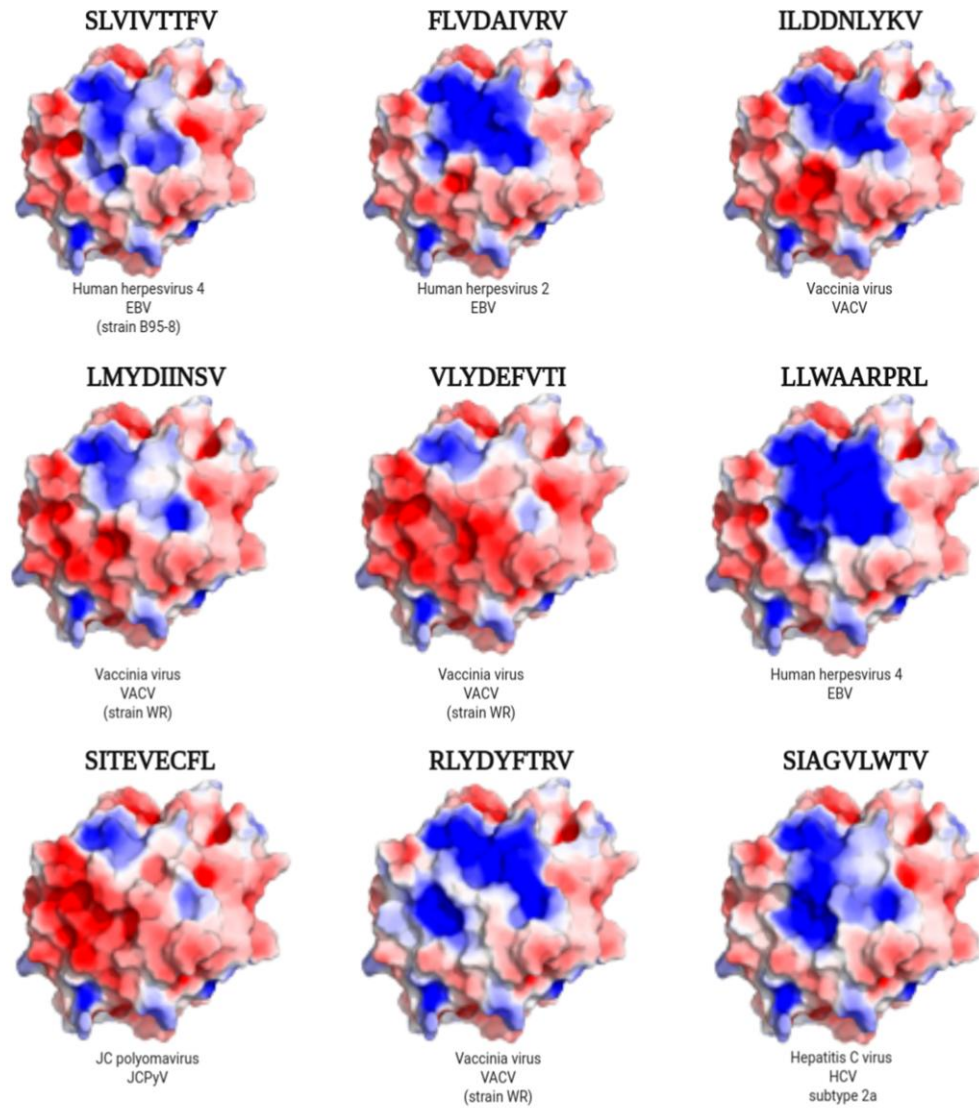


Figure S2.

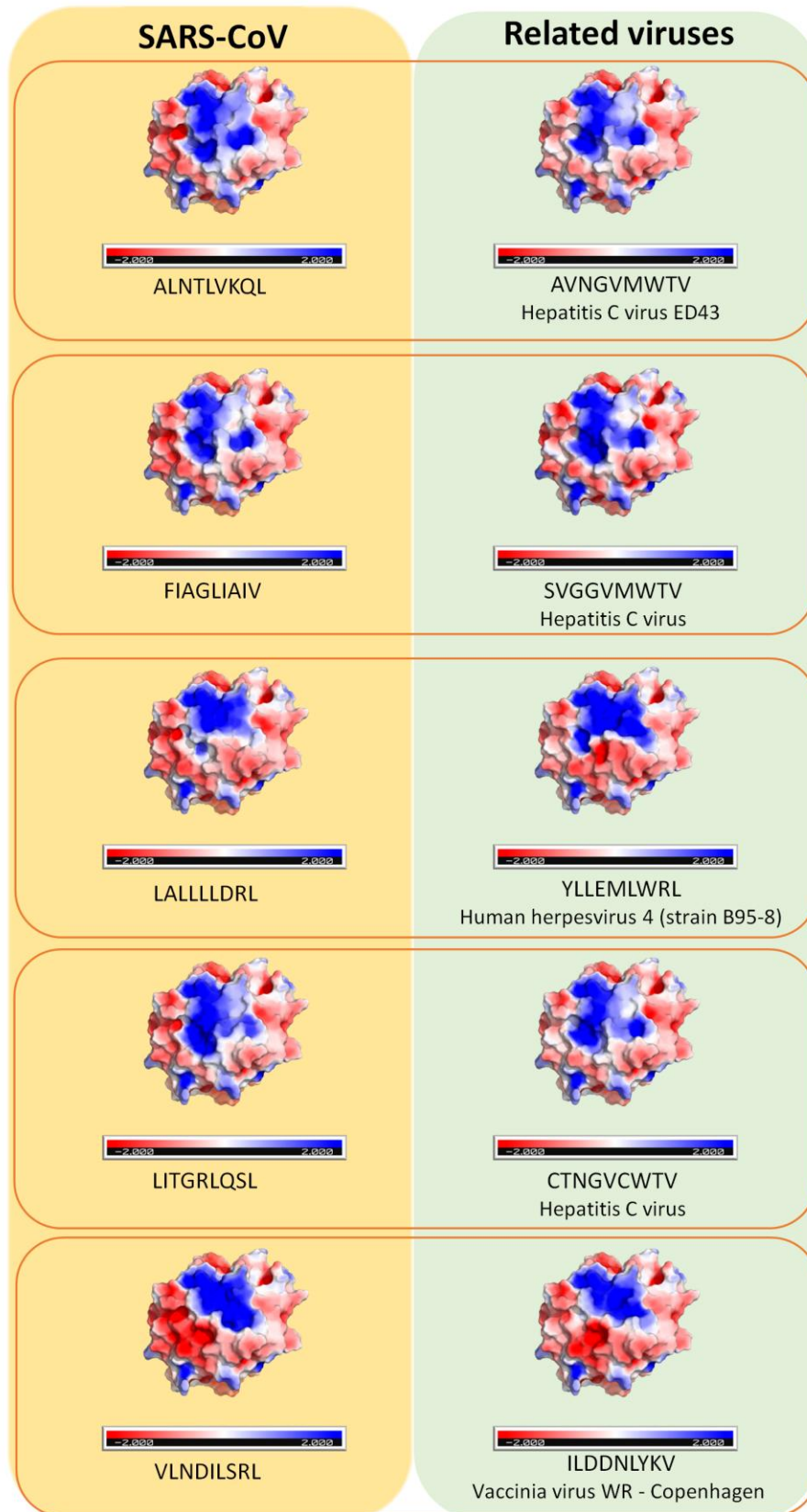


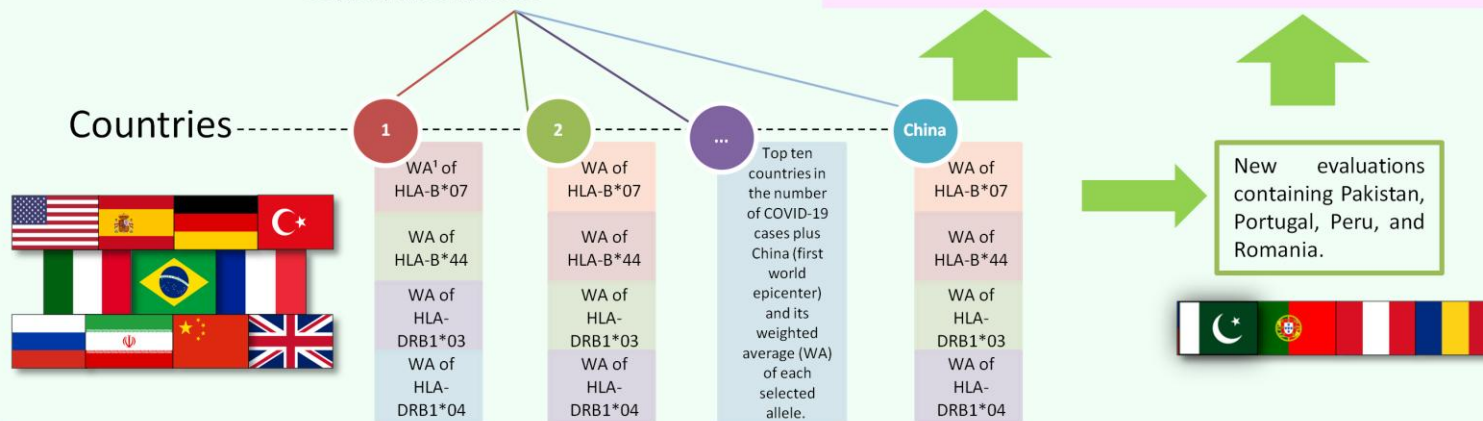
Figure S3.

Step 1: Generating Data

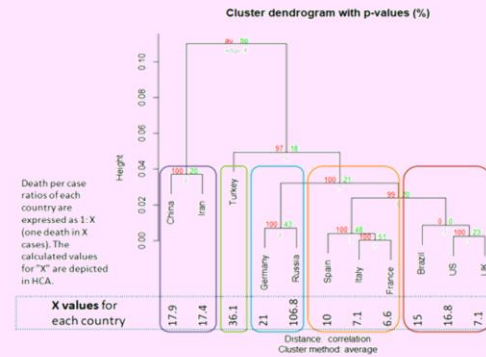
The alleles frequencies data regarding countries' populations were obtained at <http://www.allelefrequencies.net/>.

Line	Allele	Population	% of individuals that have the allele	Allele Frequency (in decimals)	Sample Size
1	B*07	Brazil Pernambuco Mixed		0.0990	101
2	B*07	Brazil Parana Afro Brazilian	18.2	0.0910	77
3	B*07	Brazil REDOME Santa Catarina		0.0847	106,673
4	B*07	Brazil Parana Mulatto	16.1	0.0810	186
5	B*07	Brazil REDOME Rio Grande do Sul		0.0795	241,329
6	B*07	Brazil Rio Grande do Sul Mixed		0.0780	324
7	B*07	Brazil REDOME Sergipe		0.0763	7,321
8	B*07	Brazil REDOME Paraiba		0.0740	43,868
9	B*07	Brazil Sao Paulo Mixed	14.0	0.0730	239
10	B*07	Brazil REDOME Parana		0.0723	341,639

The weighted average (WA¹) of each country takes into account every population allele frequency and sample size.



Step 2: Analysing Data



Hierarchical Clustering Analysis (HCA) considering the countries alleles weighted average frequencies of the top ten countries with the highest number of COVID-19 cases and the first world epicenter. The supplementary analysis includes Chile, Portugal, Peru, and Romania in distinct HCAs. The HCAs were made in the R-Studio platform, using pvclust package.

Figure S4.