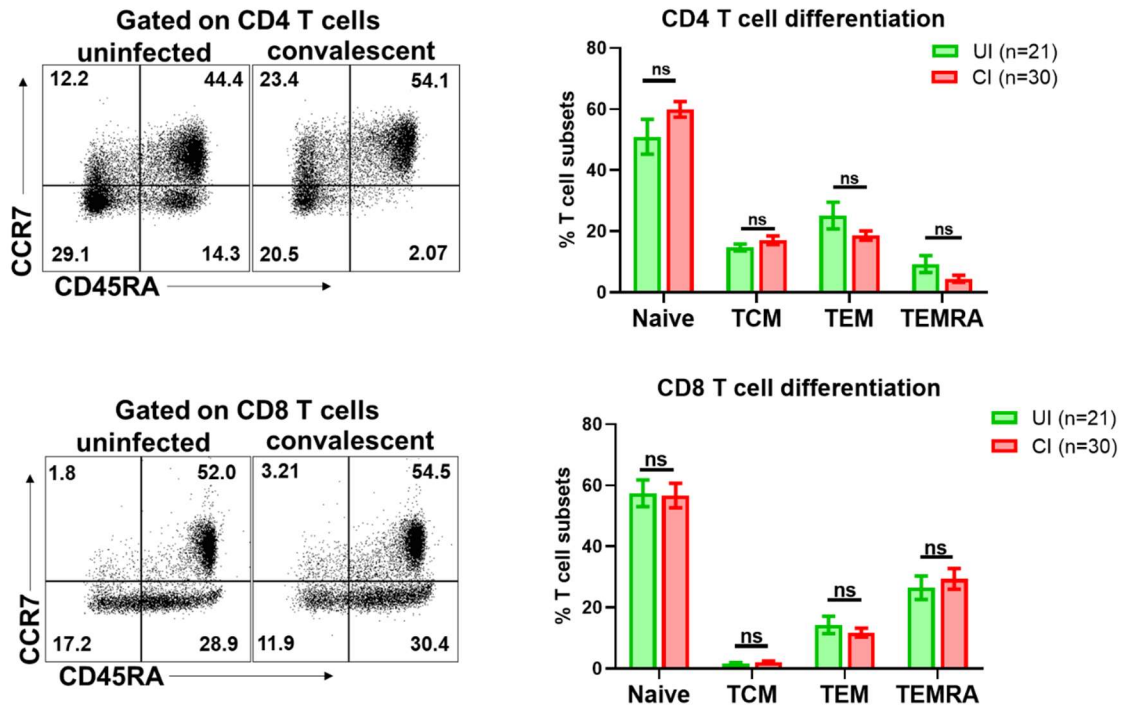
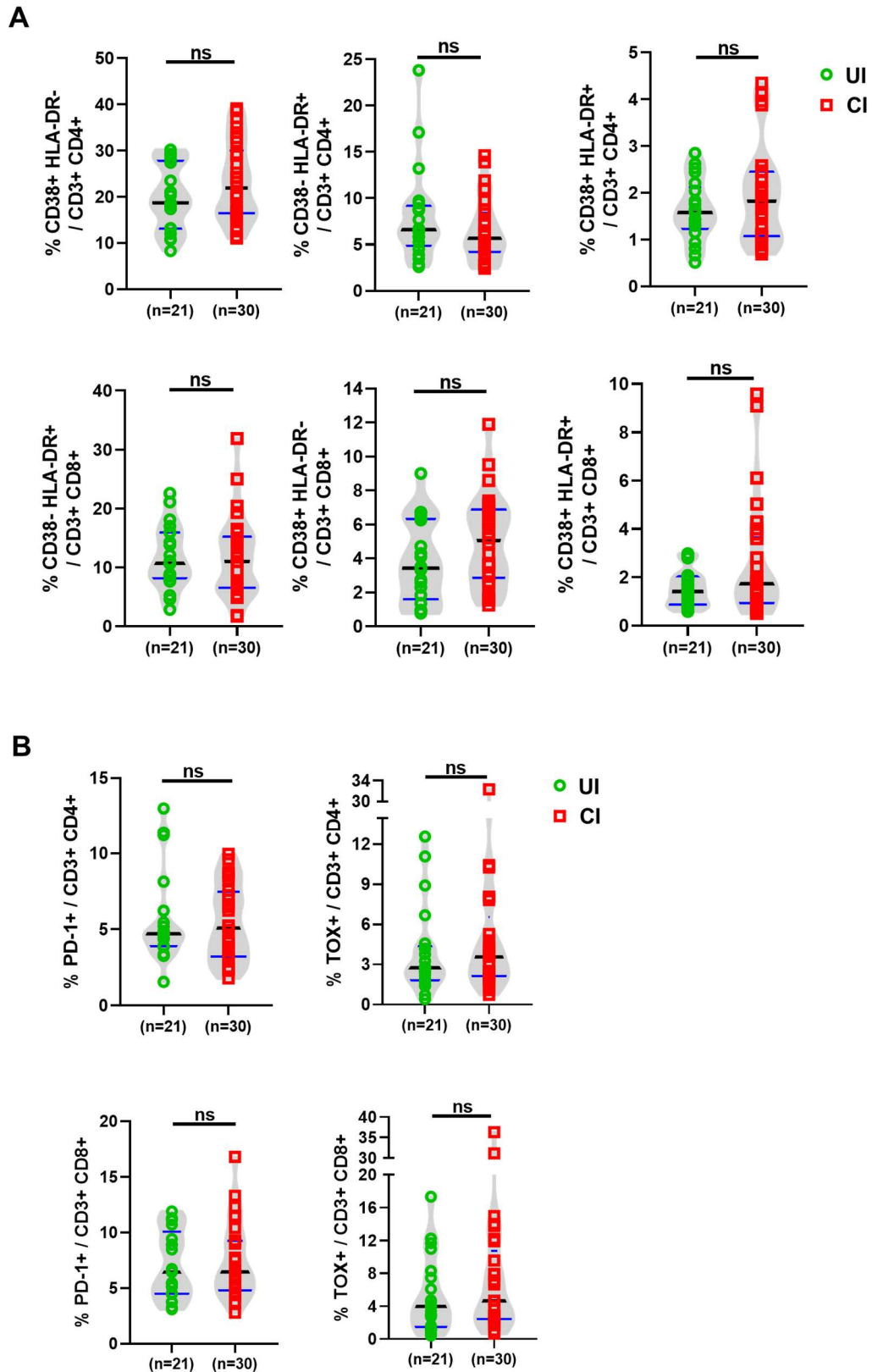


**Figure S1. Characterization of immune cell subset profiles in the PBMCs of individuals recovering from COVID-19.** (A) Exemplary gating strategy for definition of T cells, NK cells, NKT-like cells, B cells, dendritic cells, and monocytes by flow cytometry. (B) Exemplary gating strategy for definition of invariant NKT (iNKT) cells by flow cytometry. (C) The absolute numbers of total T cells, CD4 and CD8 T cells, B cells, NK cells, and monocytes in the blood of HC (n=21) and CI (n=30) were analyzed

by flow cytometry. CI: COVID-19 convalescent individuals, UI: SARS-CoV-2-unexposed individuals. Black and blue lines in the figures: median and quartiles. ns-not significant ( $p>0.05$ ).

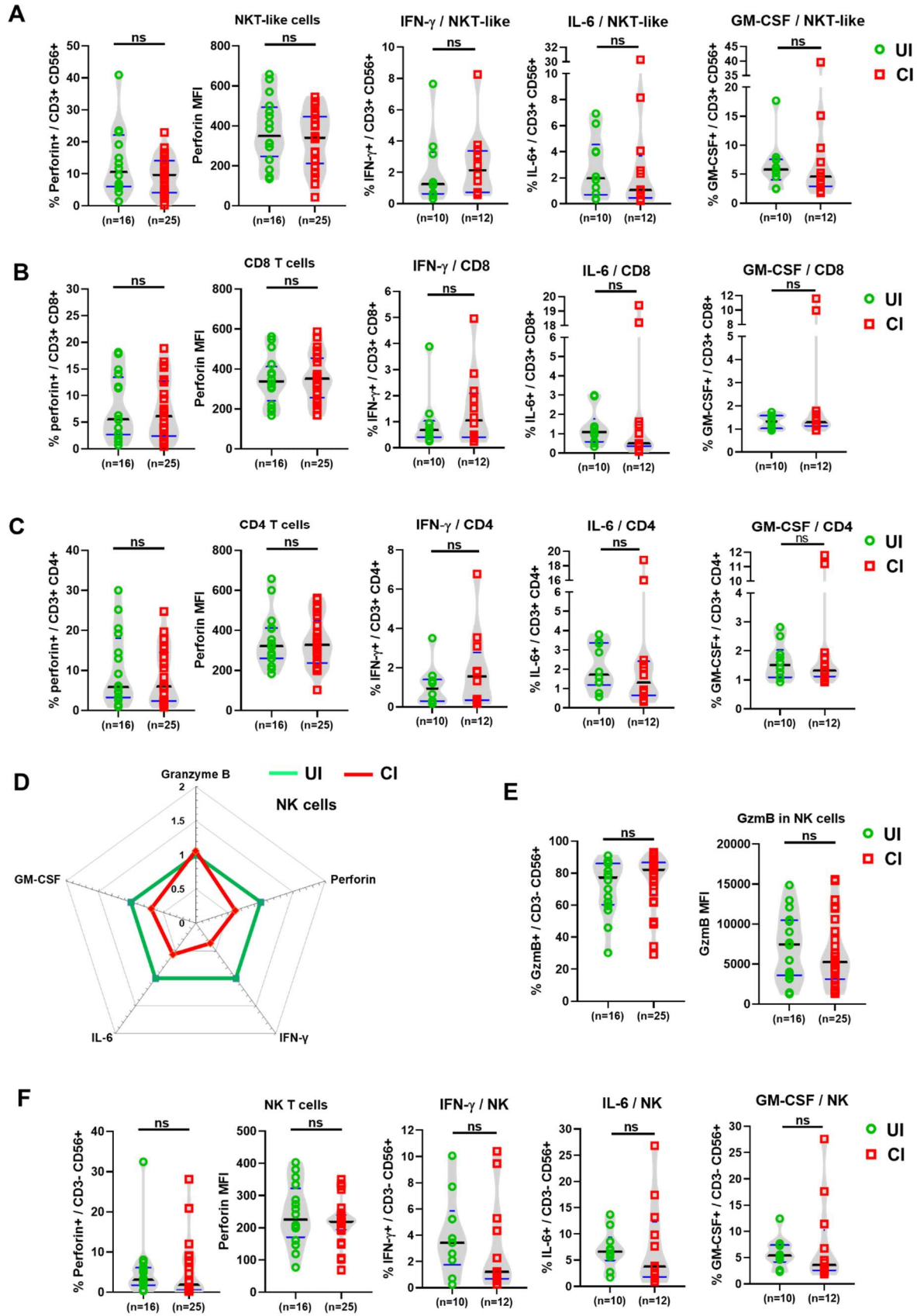


**Figure S2. Characterization of T cell differentiation in the PBMCs of individuals recovering from COVID-19.** The percentages of naive (CD45RA<sup>+</sup> CCR7<sup>+</sup>), central memory (TCM, CD45RA<sup>-</sup> CCR7<sup>+</sup>), effector memory (TEM, CD45RA<sup>-</sup> CCR7<sup>-</sup>), and terminally differentiated effector memory (TEMRA, CD45RA<sup>+</sup> CCR7<sup>-</sup>) CD4 and CD8 T cells in the blood of HC (n=21) and CI (n=30) were analyzed by flow cytometry. CI: COVID-19 convalescent individuals, UI: SARS-CoV-2-unexposed individuals. ns-not significant (p>0.05).



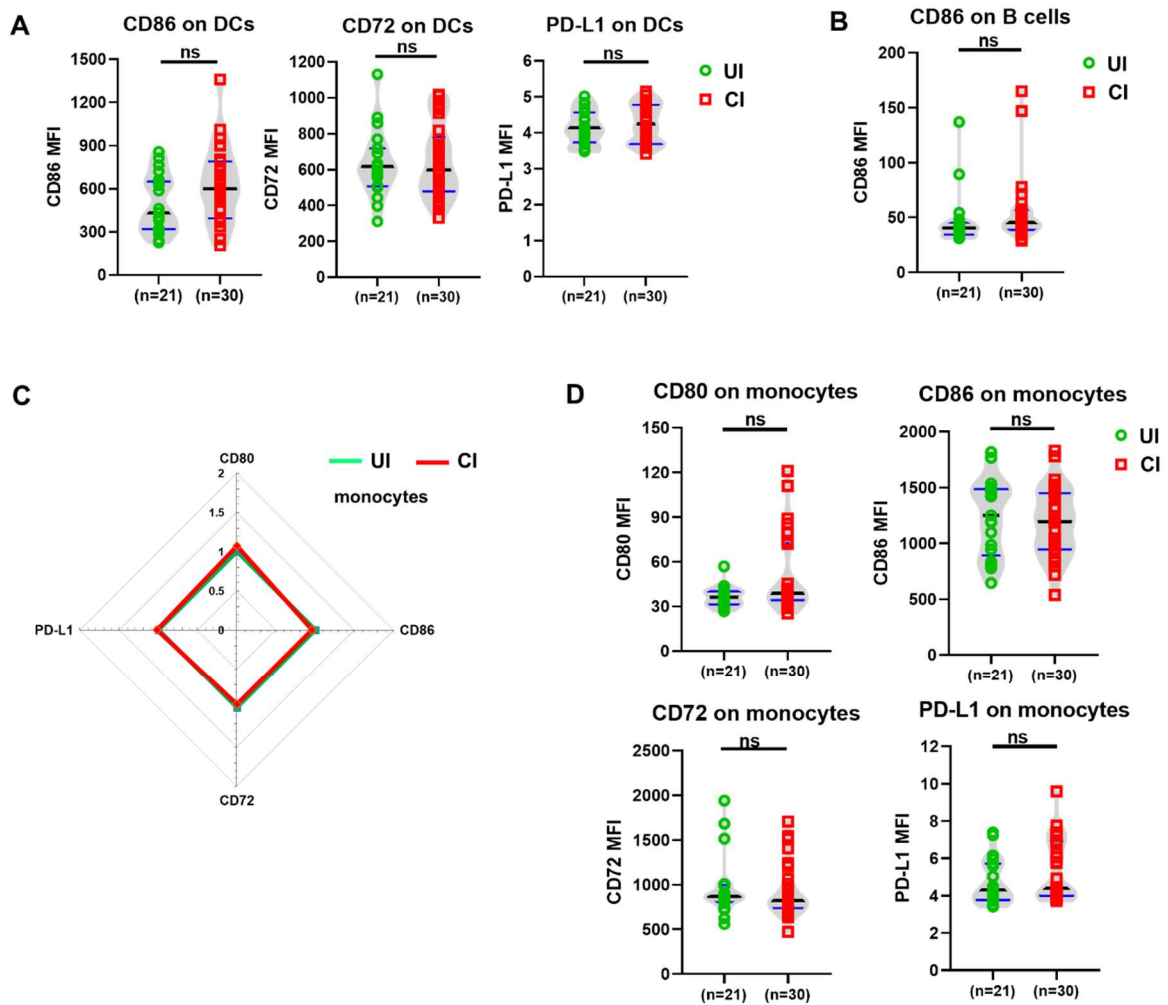
**Figure S3. Characterization of T cell phenotypes in the PBMCs of individuals recovering from COVID-19.** (A) The percentages of CD38+ HLA-DR-, CD38- HLA-

DR+, and CD38+ HLA-DR+ of CD4 and CD8 T cells in the blood of CI (n=30) compared to those of HC (n=21) were analyzed by flow cytometry. (B) The percentages of PD-1+ and TOX+ CD4 and CD8 T cells in the blood of CI (n=30) compared to those of HC (n=21) were analyzed by flow cytometry. CI: COVID-19 convalescent individuals, UI: SARS-CoV-2-unexposed individuals. Black and blue lines in the figures: median and quartiles. ns-not significant ( $p>0.05$ ).



**Figure S4. Characterization of cytotoxic and cytokine profiles of T, NK and NKT-**

**like cells in the PBMCs of individuals recovering from COVID-19.** (A) The percentages of perforin, IFN- $\gamma$ , IL-6 and GM-CSF producing NKT-like cells and MFI (Geometric mean) of perforin expression of NKT-like cells in the blood of HC (n=21) and CI (n=30) were analyzed by flow cytometry. (B) The percentages of perforin, IFN- $\gamma$ , IL-6 and GM-CSF producing CD8 T cells and MFI (Geometric mean) of perforin expression of CD8 T cells in the blood of HC (n=21) and CI (n=30) were analyzed by flow cytometry. (C) The percentages of perforin, IFN- $\gamma$ , IL-6 and GM-CSF producing CD4 T cells and MFI (Geometric mean) of perforin expression of CD4 T cells in the blood of HC (n=21) and CI (n=30) were analyzed by flow cytometry. (D) The fold changes of the percentages (mean) of Granzyme B, perforin, IFN- $\gamma$ , IL-6 and GM-CSF producing NK cells in the blood of CI compared to those of HC are depicted by radar plots. (E) The percentages and MFI (Geometric mean) of Granzyme B expression of NK cells in the blood of HC (n=16) and CI (n=25) were analyzed by flow cytometry. (F) The percentages of perforin, IFN- $\gamma$ , IL-6 and GM-CSF producing NK cells and MFI (Geometric mean) of perforin expression of NK cells in the blood of HC (n=21) and CI (n=30) were analyzed by flow cytometry. CI: COVID-19 convalescent individuals, UI: SARS-CoV-2-unexposed individuals. Black and blue lines in the figures: median and quartiles. ns-not significant ( $p>0.05$ ).



**Figure S5. Characterization of phenotypes of antigen presenting cells in the PBMCs of individuals recovering from COVID-19.** (A) The MFI (Geometric mean) of CD86, CD72 and PD-L1 expression on DCs in the blood of HC (n=21) and CI (n=30) were analyzed by flow cytometry. (B) The MFI (Geometric mean) of CD86 expression on B cells in the blood of HC (n=21) and CI (n=30) were analyzed by flow cytometry. (C) The fold changes of the MFI (Geometric mean) of CD80, CD86, CD72, and PD-L1 expression on monocytes in the blood of CI (n=30) compared to those of HC (n=21) are depicted by radar plots. (D) The MFI (Geometric mean) of CD80, CD86, CD72 and PD-L1 expression on monocytes in the blood of HC (n=21) and CI (n=30) were analyzed by flow cytometry. CI: COVID-19 convalescent individuals, UI: SARS-CoV-



2-unexposed individuals. Black and blue lines in the figures: median and quartiles. ns-not significant ( $p>0.05$ ).