

Supplemental Information

Untuned antiviral immunity in COVID-19 revealed by temporal type I/III interferon patterns and flu comparison

Ioanna-Evdokia Galani^{1,#}, Nikoletta Rovina^{2,#}, Vicky Lampropoulou¹, Vasiliki Triantafyllia¹, Maria Manioudaki¹, Eleftherios Pavlos¹, Evangelia Koukaki³, Paraskevi C. Fragkou⁴, Vasiliki Panou³, Vasiliki Rapti⁴, Ourania Koltsida⁵, Andreas Mentis⁶, Nikolaos Koulouris³, Sotirios Tsiodras⁴, Antonia Koutsoukou² and Evangelos Andreacos^{1,7,*}

¹ Laboratory of Immunobiology, Center for Clinical, Experimental Surgery and Translational Research, Biomedical Research Foundation of the Academy of Athens, Athens, Greece

² ICU, 1st Department of Respiratory Medicine, National and Kapodistrian University of Athens, Medical School, 'Sotiria' General Hospital of Chest Diseases, Athens, Greece

³ 1st Department of Respiratory Medicine, National and Kapodistrian University of Athens, Medical School, 'Sotiria' General Hospital of Chest Diseases, Athens, Greece

⁴ 4th Department of Internal Medicine, Attikon University Hospital, University of Athens Medical School, Athens, Greece

⁵ 2nd Respiratory Clinic, 'Sotiria' General Hospital of Chest Diseases, Athens, Greece.

⁶ Department of Microbiology, Hellenic Pasteur Institute, Athens, Greece

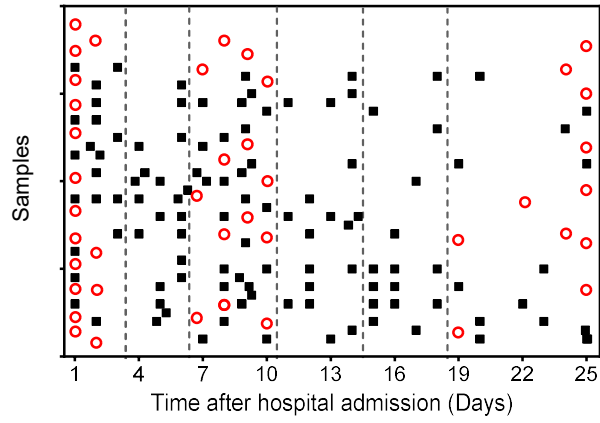
⁷ Airway Disease Infection Section, National Heart and Lung Institute, Imperial College London, London W2 1NY, United Kingdom

These authors contributed equally to this work

* Corresponding author, e.mail: vandreacos@bioacademy.gr

Figure S1

a.



b.

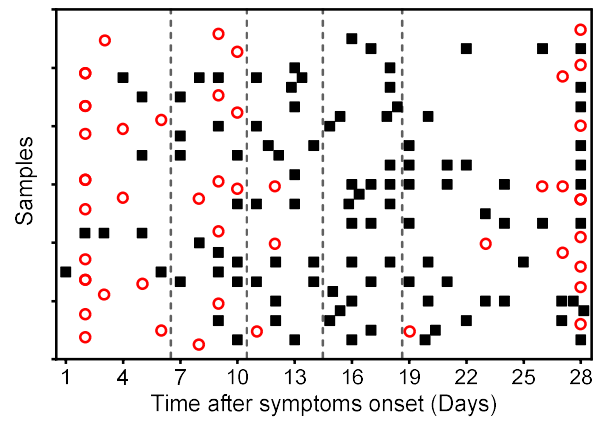


Figure S1. Distribution of COVID-19 and flu patient samples analyzed in the study.

a, Samples ordered in relation to hospital admission. **b**, Samples ordered in relation to disease onset. Black squares represent individual samples from 32 COVID-19 patients and red dots from 16 flu patients hospitalized for pneumonia.

Figure S2

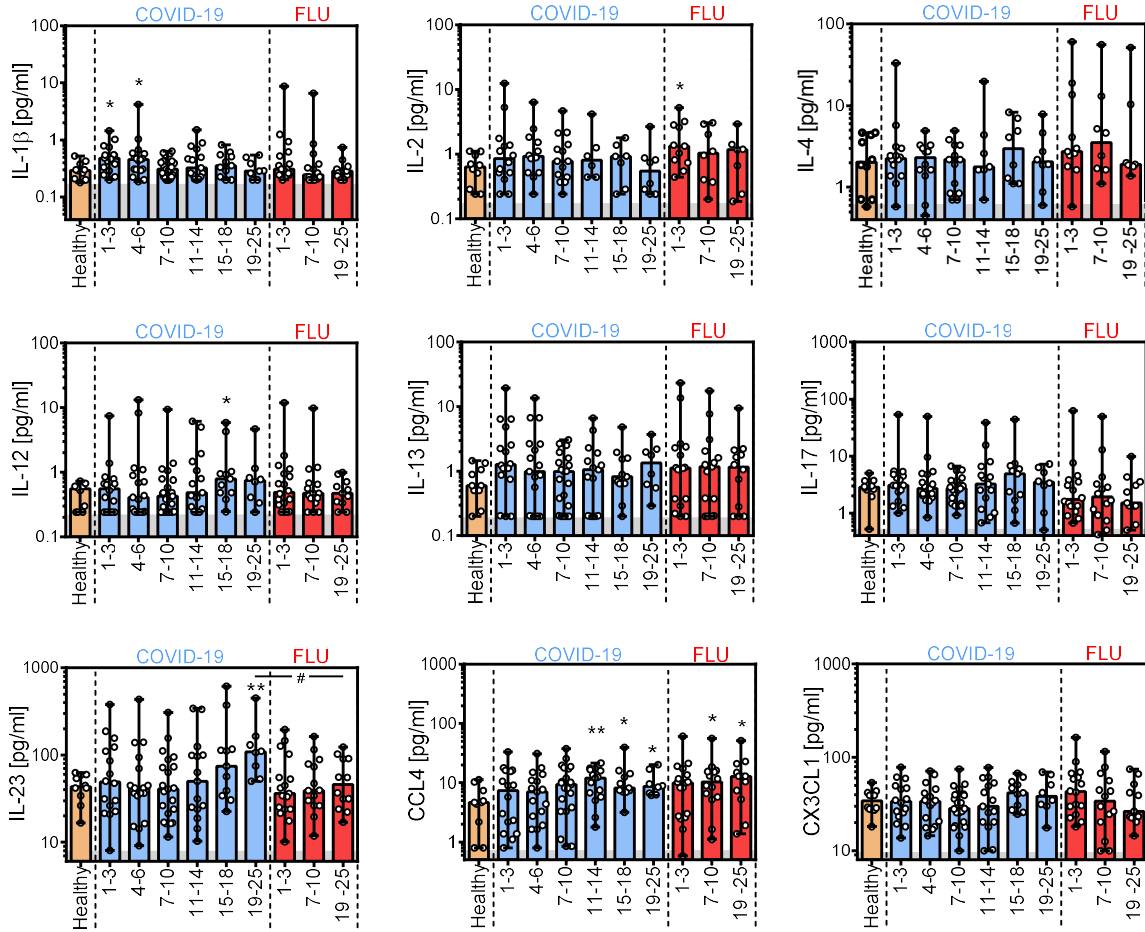
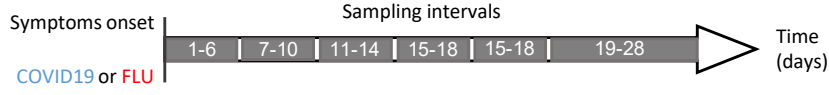


Figure S2. Temporal cytokine patterns of COVID-19 and flu patients in relation to hospital admission.

Levels of IL-1 β , IL-2, IL-4, IL-12, IL-13, IL-17, IL-23, CCL4 and CX3CL1 concentration at various time intervals after hospital admission. Data are presented as scatter plots with dots showing individual patient measurements per time interval and columns indicating median values and range from COVID-19 and flu patients or healthy individuals. Grey shading marks the limit of quantification of the assay. *P* values were determined by a two tailed Mann–Whitney U test for non-parametric comparisons. **P* < 0.05, ***P* < 0.01 and ****P* < 0.001 show significance over healthy controls. #*P* < 0.05 shows significance between COVID-19 and flu patients.

Figure S3

a.



b.

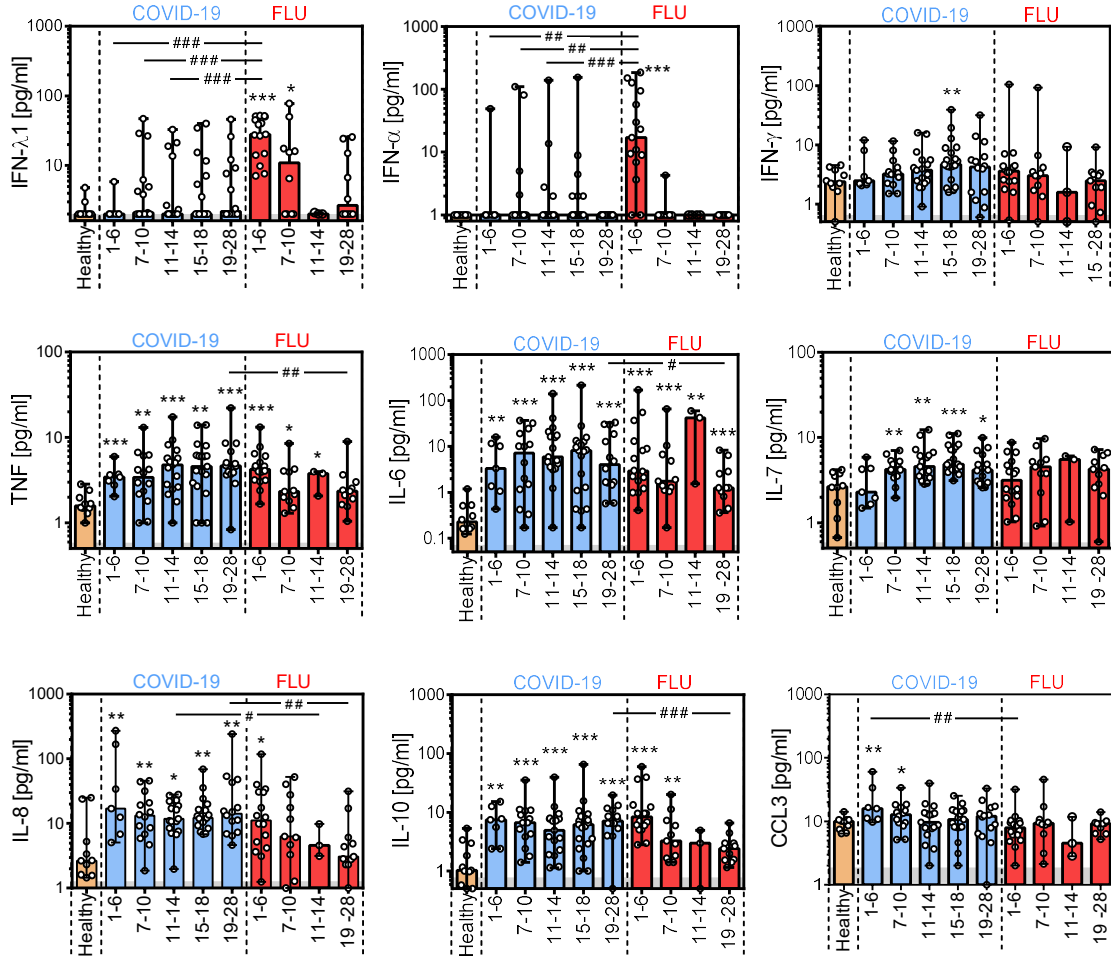


Figure S3 (cont.)

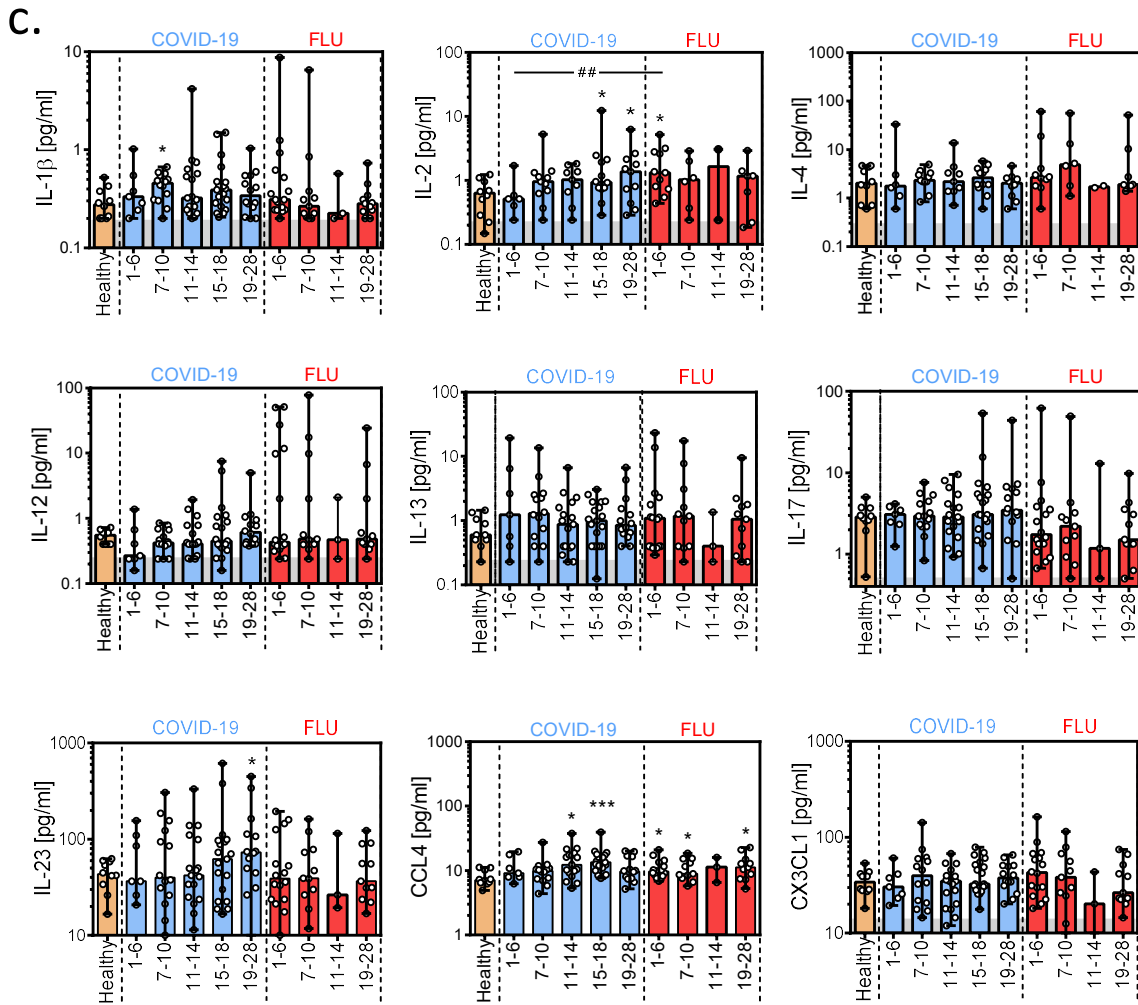


Figure S3. Temporal cytokine patterns of COVID-19 and flu patients in relation to disease symptoms onset.

a, Schematic showing the experimental design with sampling at specific time intervals after disease symptoms onset of 32 COVID-19 and 16 flu patients with pneumonia. **b**, Levels of IFN- λ 1, IFN- α , IFN- γ , TNF, IL-6, IL-7, IL-8, IL-10 and CCL3 concentration at various time intervals after disease symptoms onset. **c**, Levels of IL-1 β , IL-2, IL-4, IL-12, IL-13, IL-17, IL-23, CCL4 and CX3CL1 concentration at various time intervals after disease symptoms onset. Data are presented as scatter plots with dots showing individual patient measurements per time interval and columns indicating median values and range from COVID-19 and flu patients or healthy individuals. Grey shading marks the limit of quantification of the assay. *P* values were determined by a two tailed Mann–Whitney U test for non-parametric comparisons. **P* < 0.05, ***P* < 0.01 and ****P* < 0.001 show significance over healthy controls. #*P* < 0.05, ##*P* < 0.01 and ###*P* < 0.001 show significance between COVID-19 and flu patients.

Figure S4

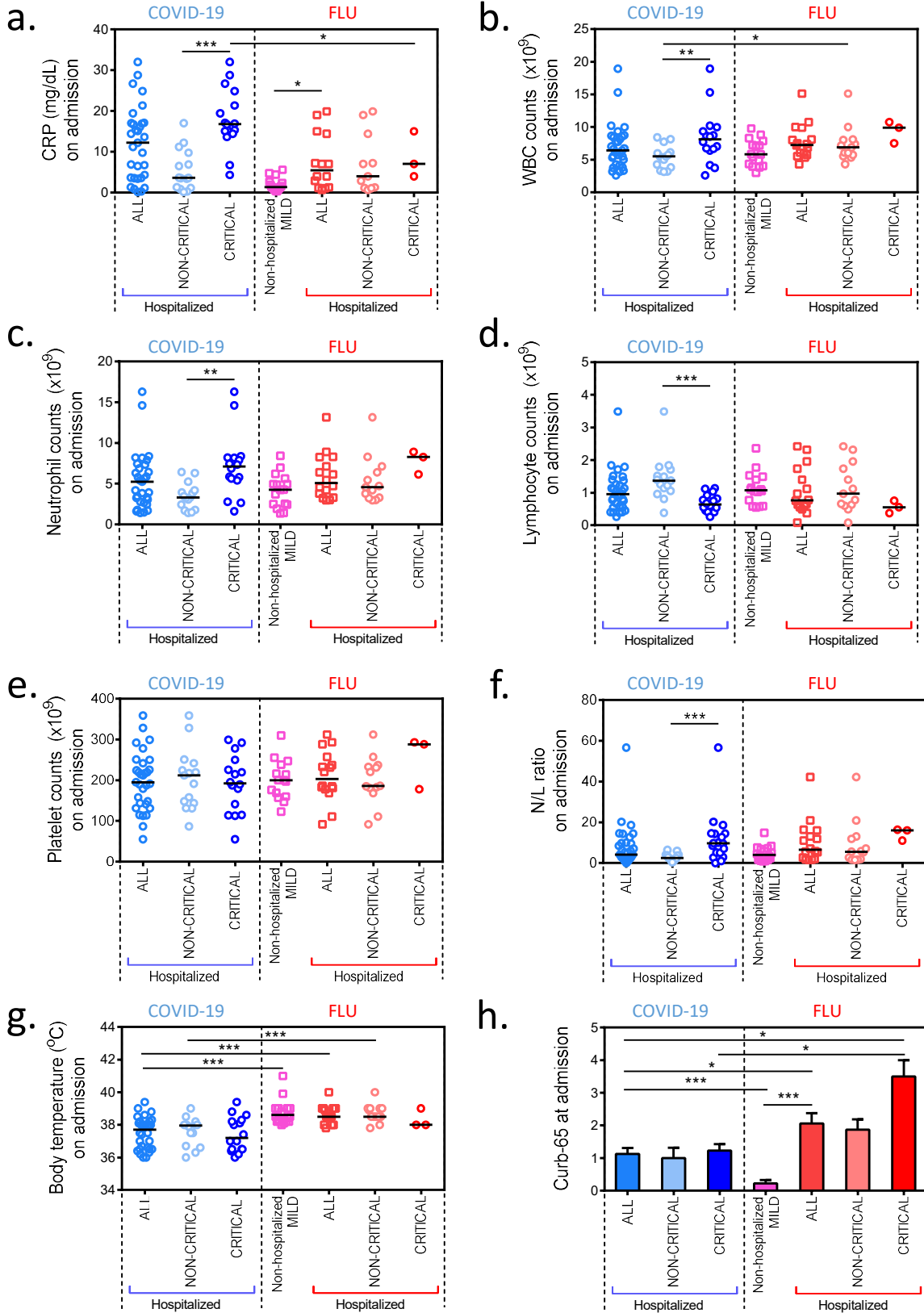


Figure S4 (cont.)

Figure S4. Clinical laboratory parameters of COVID-19 and flu patients on admission.

32 COVID-19 and 16 flu patients hospitalized for pneumonia, and 24 non-hospitalized (N.H.) flu patients with no radiological findings of pneumonia were analyzed. Subgroups of hospitalized patients developing critical versus non-critical disease were also assessed.

a, Serum CRP levels of the various patient groups. **b-e**, White blood cell (WBC) (b), neutrophil (c), lymphocyte (d) and platelet (e) counts in peripheral blood. **f**, Neutrophil to lymphocyte (N/L) ratio in peripheral blood. **g**, Body temperature of the various patient groups in °C. Data (a-g) are presented as scatter plots with lines representing median values and dots individual patient measurements. **h**, CURB-65 score indicative of pneumonia severity of the various patient groups on hospital admission or visit. Data are presented as columns with error bars indicating median values and range.

Figure S5

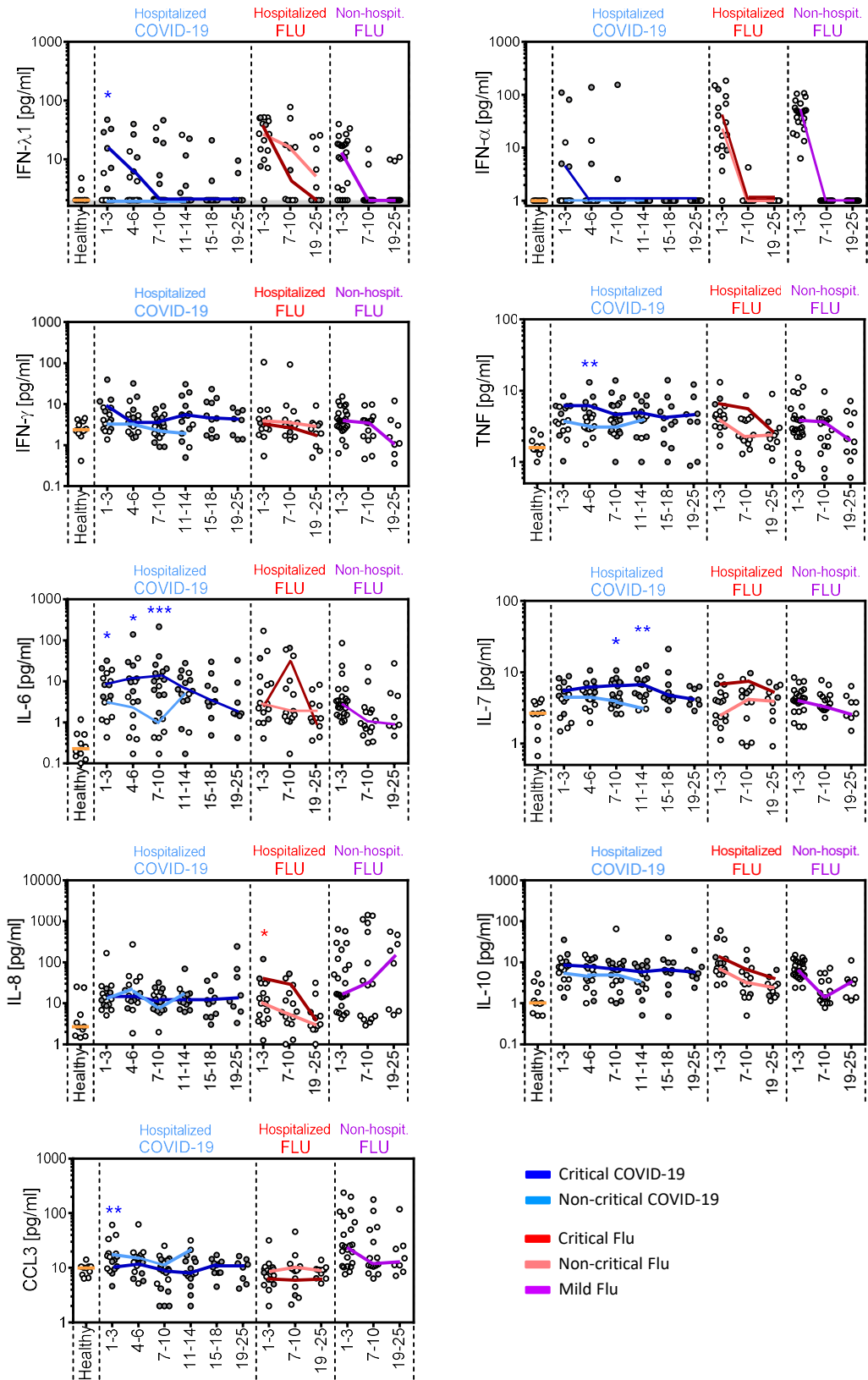


Figure S5 (cont.)

Figure S5. Comparison of temporal cytokine patterns among subgroups of COVID-19 and flu patients developing critical versus non-critical disease.

Temporal expression of IFN- λ 1, IFN- α , IFN- γ , TNF, IL-6, IL-7, IL-8, IL-10 and CCL3 of critically or non-critically ill hospitalized patients, and mild non-hospitalized patients after hospital admission or visit, respectively, as well as healthy individuals. Colored lines represent median values of each subgroup over time. Dots show individual patient measurements and shaded dot plots values corresponding to critically ill patients. *P* values were determined by a two tailed Mann–Whitney U test for non-parametric comparisons. **P* < 0.05, ***P* < 0.01 and ****P* < 0.001 show significance between critically and non-critically ill patients at the specific time interval.

Figure S6

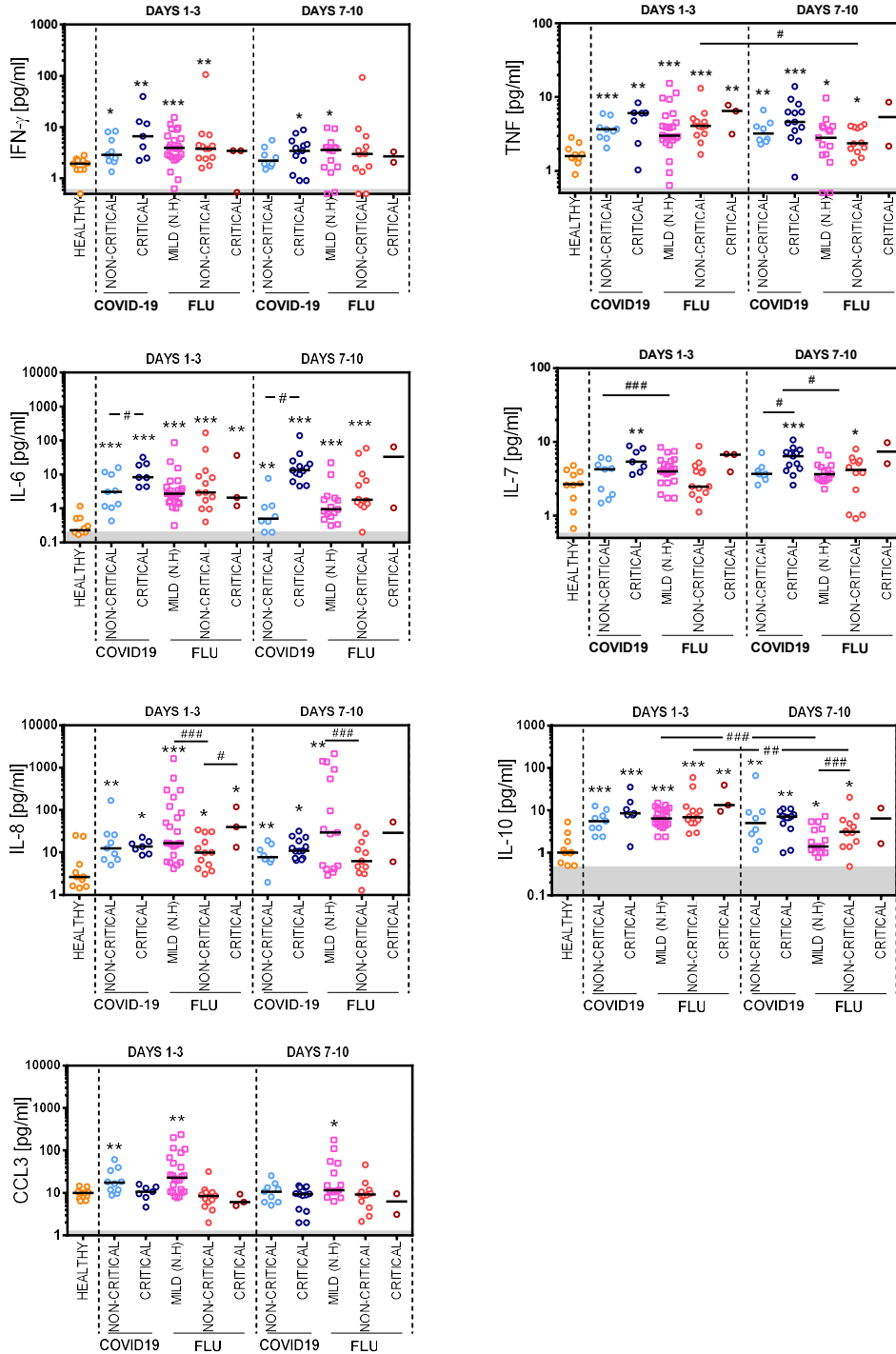


Figure S6 (cont.)

Figure S6: Comparison of cytokine patterns between subgroups of COVID-19 and flu patients according to disease severity.

Levels of IFN- γ , TNF, IL-6, IL-7, IL-8, IL-10 and CCL3 of critically and non-critically ill hospitalized patients, and mild non-hospitalized patients at day 1-3 and 7-10 time intervals after hospital admission or visit, respectively, as well as healthy individuals. Dots show individual patient measurements and lines median values of hospitalized non-critically and critically ill COVID-19 patients, flu patients and healthy individuals. Squares show non-hospitalized flu patients. Grey shading marks the limit of quantification of the assay. *P* values were determined by a two tailed Mann–Whitney U test for non-parametric comparisons. **P* < 0.05, ***P* < 0.01 and ****P* < 0.001 show significance over healthy controls. #*P* < 0.05, ##*P* < 0.01 and ###*P* < 0.001 show significance between between critical and non-critical COVID-19 or Flu subgroups.

Figure S7

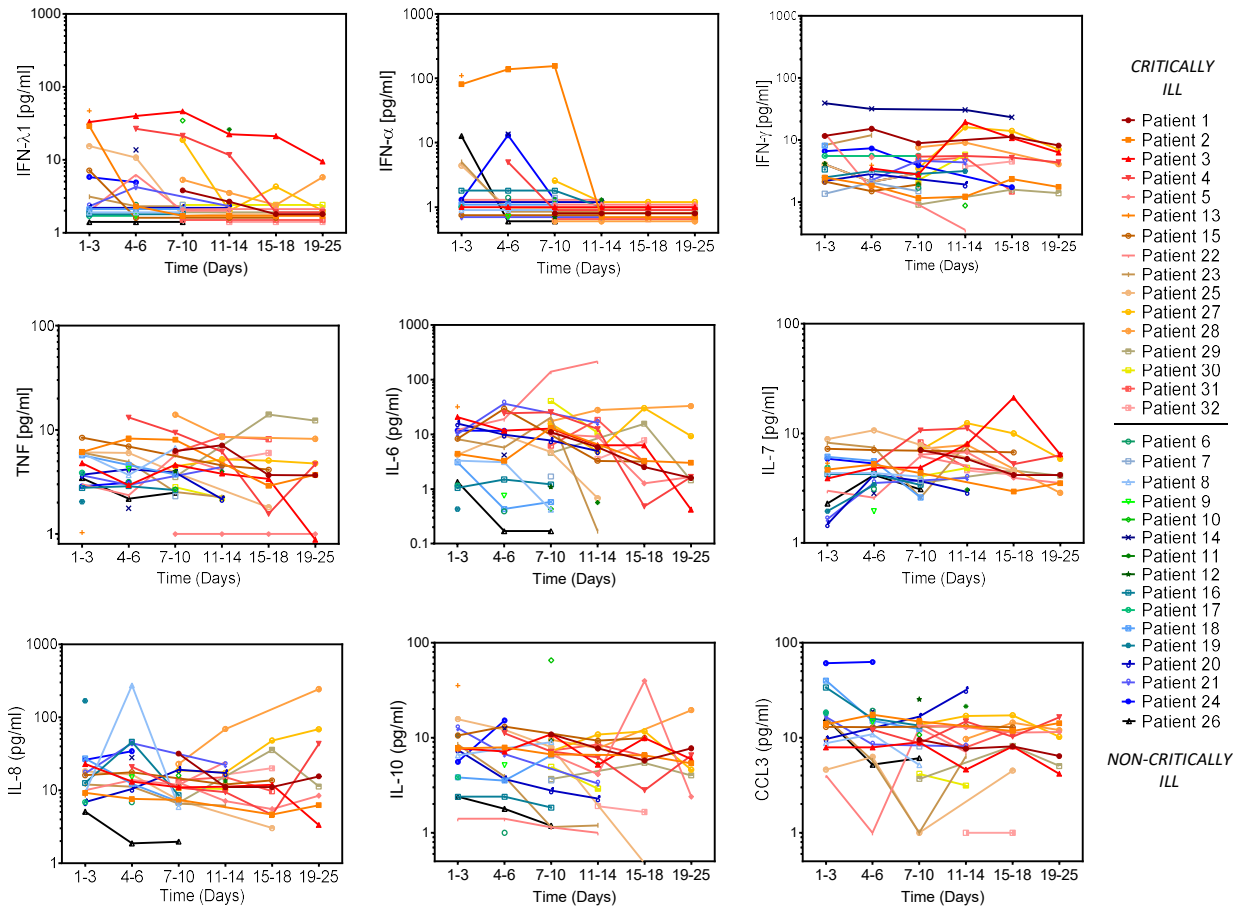


Figure S7: Temporal cytokine patterns of individual COVID-19 patients.

Expression patterns of IFN- λ 1, IFN- α , IFN- γ , TNF, IL-6, IL-7, IL-8, IL-10 and CCL3 concentration in the sera of 32 individual COVID-19 patients following hospital admission. Distinct color symbols and lines represent individual patient values over time. Patients developing critical versus non-critical disease are shown.

FIG. S7

Figure S8

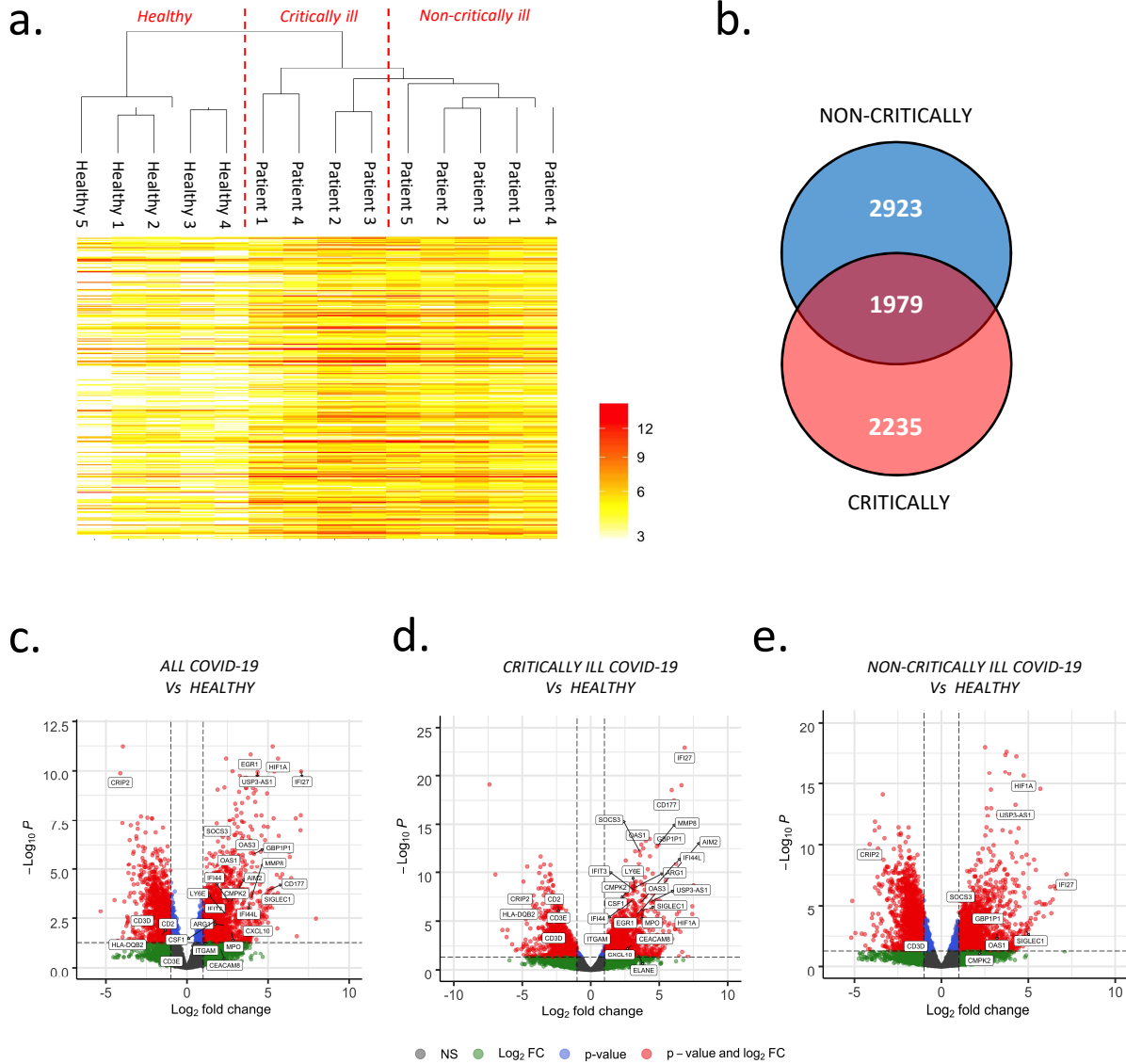


Figure S8 (cont.)

f.



Figure S8 (cont.)

Figure S8. Kinetic analysis of blood transcriptional signatures of COVID-19 patients.

a, Heatmap and hierarchical clustering of the variance stabilizing transformed values for healthy, critically ill and non-critically ill patients based on the genes with a log₂-fold-change of at least 3 and adjusted p-value of less than 0.001 between patients and healthy. **b**, Venn diagram showing the unique and common differentially expressed genes (DEGs) of peripheral white blood cell transcriptomes from critically ill (n=4) and non-critically ill (n=5) patients compared to healthy (n=5). **c-e**, Volcano plots showing the most significantly up-regulated and relevant DEGs in all COVID-19 (c) and their critically (d) and non-critically ill (e) subgroups versus healthy individuals at day 1 of hospital admission. **f**, Heatmap of an extended list of interferon-stimulated genes (ISGs) induced in critically and non-critically ill COVID-19 subgroups.

Figure S9

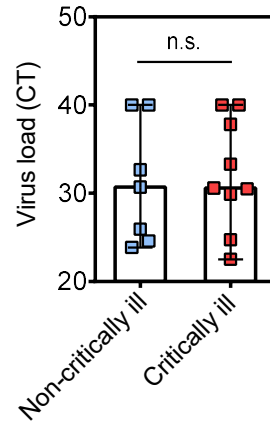


Figure S9. Comparison of viral load between COVID-19 patients that develop critical versus non-critical disease.

Viral load at the day 1-3 time interval of hospital admission of COVID-19 patients that eventually develop critical versus non-critical disease. Dot plots show individual patient measurements. Statistical significance was determined using the Spearman rank-order correlation coefficient for non-parametric data. n.s.: Not significant

Table S1. Clinical, laboratory and imaging findings on hospital admission of the study patients developing critical versus non-critical disease

Characteristics	COVID-19		FLU	
	Disease severity			
	Non-critically ill (N=16)	Critically ill (N=16)	Non-critically ill (N=13)	Critically ill (N=3)
Age				
Median (IQR), yr	56 (43-85)	63 (47-75)	60 (51-70)	68 (64-77)
Age ≥65 yrs, no (%)	6 (37.5)	7 (44)	6 (46)	2 (67)
Male, no (%)	10 (62.5)	12 (75)	6 (46)	3 (100)
Smoking history				
Never smoked	11 (69)	11 (69)	6 (46)	1 (33)
Former smoker	3 (19)	1 (6)	1 (8)	2 (67)
Current smoker	3 (19)	4 (25)	6 (46)	0 (0)
Coexisting disorder, no (%)				
Any	8 (50)	11 (69)	10 (77)	3 (100)
Diabetes	2 (12)	5 (31)	1 (8)	1 (33)
Hypertension	4 (25)	8 (50)	6 (46)	2 (67)
Cardiovascular disease	1 (6)	1 (6)	1 (8)	2 (67)
COPD	0	0	4 (31)	2 (67)
Asthma	1 (6)	2 (12)	1 (8)	0 (0)
Cancer/ Malignant haemopathy	0 (0)/ 0 (0)	0 (0)/ 0 (0)	1 (8)/ 0 (0)	0 (0)
Chronic renal disease	0 (0)	0 (0)	0 (0)	0 (0)
Overweight/ Obese	8 (50)/4 (25)	9 (56)/4 (25)	N/A/ 2 (15)	N/A/ 0 (0)
Median interval from first symptoms on admission (IQR), days	6 (2-7)	4.5 (2-9)	1 (1-2)	2.5 (2-3)
Fever on admission				
Patients, no/Total No (%)	6 (37.5)	6 (37.5)	13 (100)	3 (100)
Median temperature (IQR), °C	37.9 (36.8-38.1)	37 (36.4-38.2)	38.5 (38.5-39)	38 (38-38.5)
Symptoms on admission				
Dyspnea	5 (31)	16 (100)	N/A	N/A
Cough	13 (81)	7 (44)	8 (62)	3 (100)
Fatigue	10 (62)	8 (50)	10 (77)	2 (67)
Myalgia	1 (6)	3 (19)	6 (46)	2 (67)
Diarrhea/ vomiting	0	6 (37)	4 (31)	0 (0)

Median oxygen requirement (IQR, L/min)	2 (0-3)	4 (3-7)	7.5 (5.75-10)	15 (12.5-15)
Curb-65 score (IQR)	0.5 (0-2)	1 (0.75-2)	2 (1-3)	3.5 (3-4)
Laboratory findings on admission				
Leukocytes (IQR) x 10 ⁹ /L	5.5 (3.92-7.32)	7.09 (5.83-9.34)	6.87 (5.73-8.02)	9.9 (8.7-10.3)
Neutrophils (IQR) x 10 ⁹ /L	3.9 (3.21-7.32)	6.24 (4.30-8.18)	4.56 (3.29-6.40)	8.27(7.21-8.59)
Lymphocytes (IQR) x 10 ⁹ /L	1.27 (0.98-1.66)	0.67 (0.45-1.04)	0.97 (0.63-1.74)	0.55 (0.46-0.65)
Monocytes (IQR) x 10 ⁹ /L	0.41 (0.29-0.57)	0.31 (0.24-0.78)	N/A	N/A
Platelets (IQR) x 10 ⁹ /L	153 (118-222)	195 (141-270)	186 (181-233)	288 (233-290)
CRP mg/dl, (IQR)	3.6 (0.89-9)	17.11 (14.9-24.9)	3.98 (1.17-10.8) (N=11) [#]	11 (9-13)
Lactate dehydrogenase (LDH) (IQR), IU/L	240 (177-313)	413 (342-544)	292 (245.7-316.5)	315 (269-320)
Alanine aminotransferase (ALT) >40 IU/L	28 (24-33)	33 (22-52)	28 (20-47)	26 (24.5-38.5)
Ferritin (IQR), ng/ml	436 (267-699)	1061 (672-2211)	N/A	N/A
PCT (IQR), ng/ml	0.04 (0.02-0.08)	0.31 (0.11-0.85)	N/A	N/A
Chest X-ray findings on admission				
Abnormal results, no. (%)	14 (87) ^{##}	16 (100)	12 (92) ^{##}	3 (100)
Unilateral infiltrates	4 (25)	0	5 (38)	0 (0)
Bilateral infiltrates	10 (62)	16 (100)	7 (54)	3 (100)

[#] Data available for 11 patients as indicated.

^{##} X-ray negative patients were positive for unilateral or bilateral opacities on CT.

N/A: Not available