

**Supplementary Material for “Systematic review and patient-level meta-analysis of
SARS-CoV-2 viral dynamics to model response to antiviral therapies”**

Supplementary Tables

Table S1 Extracted viral load data metrics

Sample site	n samples (%<LOD)	Viral load metrics [log ₁₀ copies/mL]	
		Median (IQR)	[min – max]
Blood	268 (79.9)	3.96 (1.65)	2.03 – 7.11
Saliva/Throat	2144 (37.1)	4.62 (2.23)	1.02 – 10.78
Lower respiratory	799 (28.9)	5.47 (2.71)	1.08 – 10.82
Stool/rectal	655 (35.4)	5.05 (2.25)	-0.25 -11.38
Urine	138 (88.4)	4.5 (1.22)	3.76 – 6.35
Breast milk	90 (45.6)	3.95 (2.63)	1.96 – 5.31
Ocular secretion	50 (84.0)	5.6 (1.99)	2.85 -8.74
nasal	2208 (20.8)	5.00 (2.57)	1.4 – 11.5

Table S2 Summary of observed drug therapies – mono and combination therapies.

Drugs	IDs	Samples
No drug	67	862
Mono therapies		
Azithromycin	1	1
Chloroquine/ hydroxychloroquine	15	96
Interferon	14	41
Lopinavir/ritonavir	84	598
Remdesivir	6	31
Ribavirin	2	6
Umifenovir	16	68
Thymalfasin	-	-
Combination Therapies		
Azithromycin + chloroquine/ hydroxychloroquine	6	40
Azithromycin + lopinavir/ritonavir	5	29
Azithromycin + lopinavir/ritonavir + ribavirin	5	35
Azithromycin + interferon + lopinavir/ritonavir + ribavirin	2	11
Hydroxychloroquine + interferon + thymalfasin	1	1
Hydroxychloroquine + lopinavir/ritonavir	1	20
Interferon + thymalfasin	5	16
Interferon + lopinavir/ritonavir	2	8
Interferon + ribavirin	1	1
Interferon + ribavirin + umifenovir	1	1
Interferon + umifenovir + thymalfasin	3	4
Lopinavir/ritonavir + ribavirin	33	222
Lopinavir/ritonavir + umifenovir	1	1
Lopinavir/ritonavir + interferon + ribavirin	54	352
Ribavirin + umifenovir	1	2
Umifenovir + thymalfasin	1	2

Table S3 Parameter estimates (relative standard errors, %RSE) from NLME model fit to available sample sites. β , rate target cells become infected; δ , death rate of infected cells; γ , maximum rate of viral replication; V_0 , the initial viral load. Urine and ocular V_0 were not estimable and fixed to LLOD/2 with γ fixed to e^1

	Blood	Saliva/ Throat	Lower respiratory	Stool/ rectal	Urine	Breast milk	Ocular secretion	Nasal
Typical estimates								
β [copies x day/ml]	0.0238 (29)	7.25×10^{-4} (6)	6.14×10^{-6} (6.5)	1.37×10^{-5} (24)	0.160 (15)	2.07 (1838)	4.70×10^{-3} (16)	3.04×10^{-5} (19)
δ [1/day]	1.40 (230)	0.588 (21)	0.638 (46)	0.572 (101)	1.46 (110)	1.56 (142)	1.77 (30)	0.796 (80)
V_0 [copies/ml]	1.84 (415)	6.62×10^4 (3)	2.42×10^6 (3)	1.91×10^4 (7)	46.06*	237.46 (358)	42.52*	66×10^4 (2)
γ [1/day]	1.76 (51)	2.46 (11)	6.36 (31)	1.16 (38)	2.72*	1.27 (342)	2.72*	2.13 (257)
Variance estimate								
β	5.37 (88)	6.05 (44)	19.3 (37)	11 (35)	0.458	17.2 (720)	2.22 (394)	12.4 (163)
δ	0.395 (122)	0.766 (19)	1.21 (35)	0.757 (45)	0.265	0.318 (884)	0.223 (219)	0.747 (49)
V_0	23.3 (51)	14.7 (12)	7.97 (28)	24.4 (29)	32.5	26 (839)	65.5 (195)	19.6 (13)
γ	0.01*	0.01*	0.01*	0*	0.01*	0.01*	0.01*	0.01*
Residual error	35	9.26	9.2	3.76	76.6	3.84	56	3.16
Residual error, nested	1.69	2.37	1.01	5.15		4.11		3.99

* fixed Parameters

Table S4 Parameter estimates (relative standard errors, %RSE) from NLME model including covariate relationships. β , rate target cells become infected; δ , death rate of infected cells; γ , maximum rate of viral replication; V_0 , the initial viral load. Exponents of log-normal distributed parameters are reported. Drug effects were estimated as additive effects on exponentiated delta estimate.

	Empirical Bayes Estimates (RSE%)	Bootstrap 95% CI
Typical estimates		
β [copies x day/ml]	1.19 x 10 ⁻³ (33)	3.35 x 10 ⁻⁷ – 0.0539
δ [1/day]	0.571 (9)	0.427 – 1.66
V_0 [copies/ml]	6.6 x 10 ⁵ (2)	3.93 x 10 ⁵ – 1.07 x 10 ⁶
γ [1/day]	2.16 (72)	2.16 – 3.15
LRT on β^{++}	1.24 x 10 ⁻³ (0.03)	2.16 x 10 ⁻⁶ – 0.018
IFN on $\delta^{\#}$	1.82 (0.06)	1 – 2.60
LPVR/r on $\delta^{\#}$	1.28 (0.07)	1 – 1.89
Riba on $\delta^{\#}$	1.43 (0.02)	1 – 2.08
Age on δ^{+}	-0.07 (0.01)	-0.18 - -0.04
Sex on δ^{++}	-0.13 (0.01)	-0.48 – 0.02
Variance estimate		
β	17.2 (38)	6.68 – 33.5
δ	0.40 (13)	0.26 – 0.60
V_0	13.4 (11)	10.3 – 16.5
γ	0.01*	
Residual error	1.23 (85)	0.03 – 3.42
Residual error, nested	7.93 (15)	5.76 – 9.86

* fixed Parameter

Covariate effects: # proportional effect, + power function, ++ absolute change

Table S5 Some example sample sizes (number of patients per arm drug versus placebo) required to detect a significant difference in the proportion of undetectable viral loads after 7 days of treatment with the antivirals selected by the NLME model. Power was set at 90% for a 2-sided test and significance level of $p < 0.05$.

Drug	Start Day 1	Start Day 3	Start Day 7
Lopinavir/ritonavir	523	606	913
Ribavirin	247	284	436
Interferon	78	90	132
Interferon+ribavirin	26	31	45

Supplementary Figures

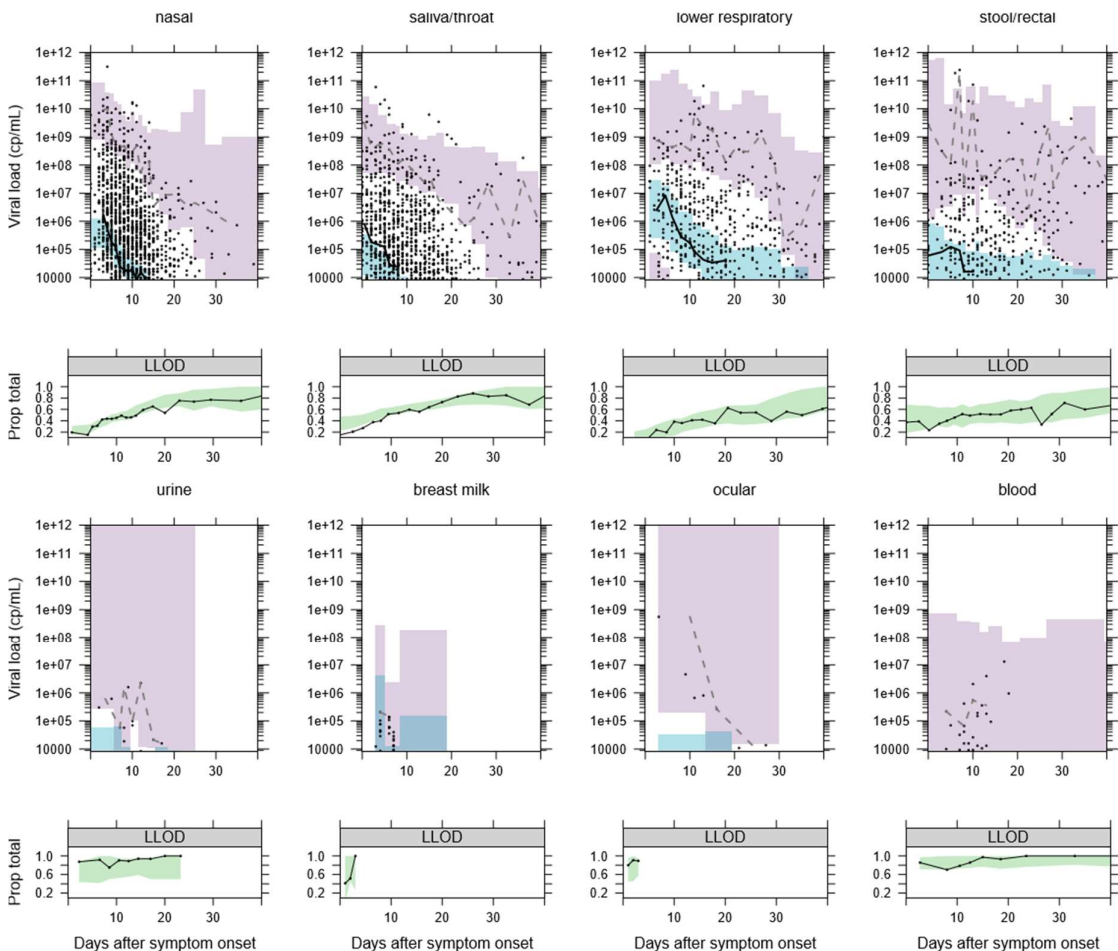


Figure S1 Visual predictive checks for the NLME model fitted to viral load data to each sampling site. For each site a plot of model simulations compared with observations is given for both the continuous data (upper) and the fraction of samples below the limit of detection (lower). Black circles are observed viral loads, purple shaded area is the 95% prediction interval of the simulated 2.5th and 97.5th percentile for comparison with the observed 2.5 and 97.5th percentile (dashed lines). The blue shaded area is the 95% prediction interval of the 50th percentile to compare with the continuous black line. In the lower plot the observed proportion of samples below the lower limit of detection (LLOD) are shown as a black line and compared with the 95% prediction interval of the model predicted proportion of samples below the LLOD (green shaded area)

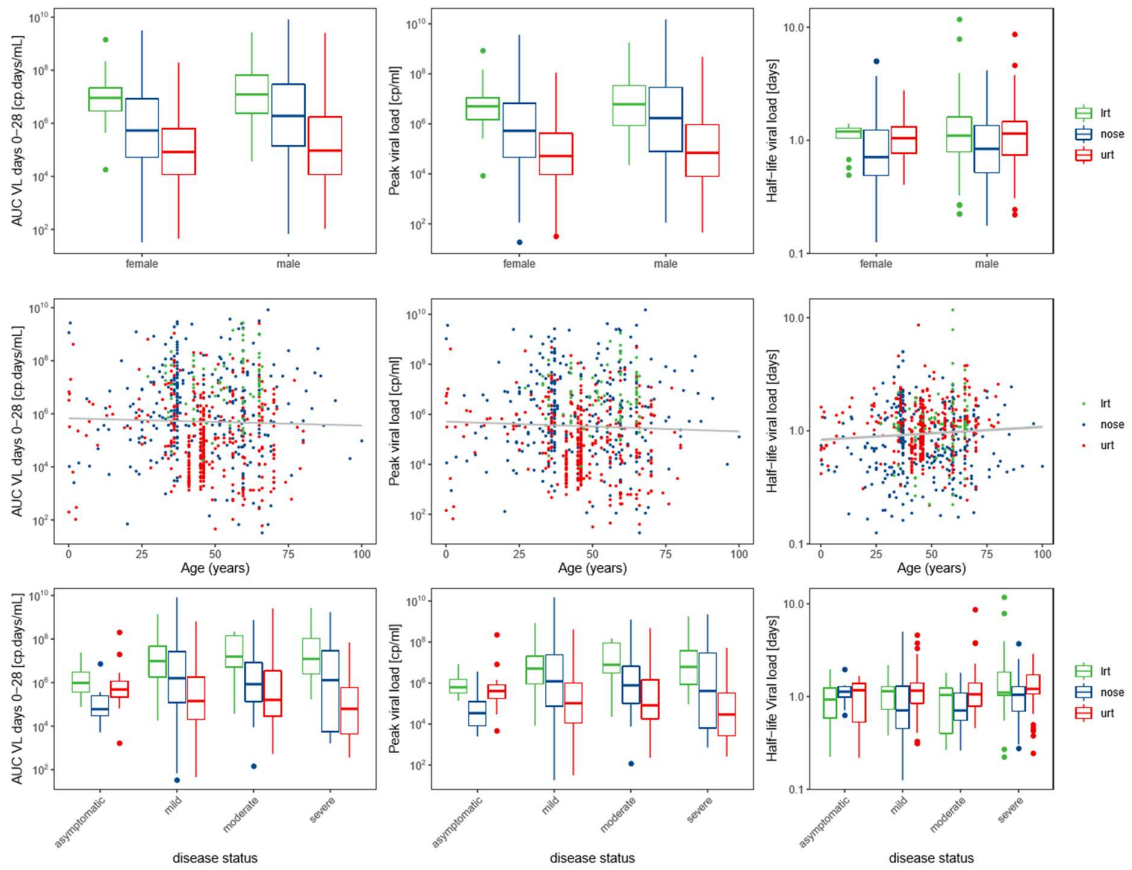


Figure S2 NLME model derived parameters for respiratory sample sites. Plot of model-predicted viral area under the curve from day 0-28 of symptom $AUC_{(0-28)}$, peak viral load and viral elimination half-life compared with sex, age and disease severity. lrt, lower respiratory tract; urt, upper respiratory tract

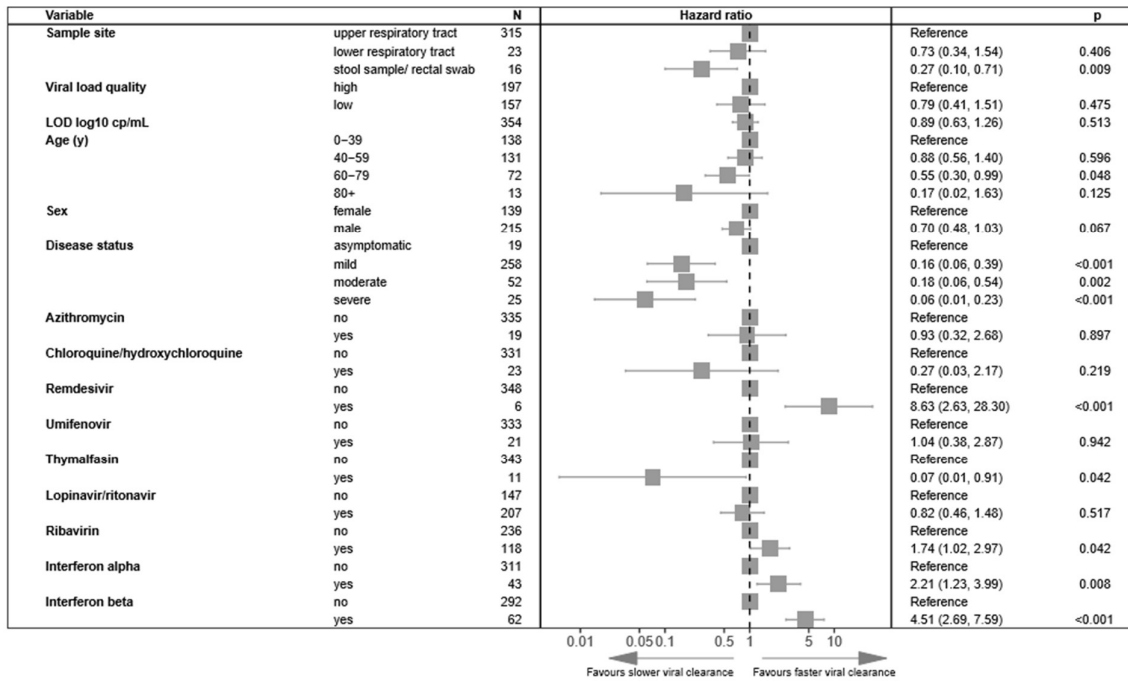


Figure S3 Multivariable Cox proportional hazard results on all drug quality 1 and 2 data from respiratory and stool/rectal sampling sites with interferons split between alpha and beta. Adjusted hazard ratios exceeding 1 indicate virus being more likely to become undetectable

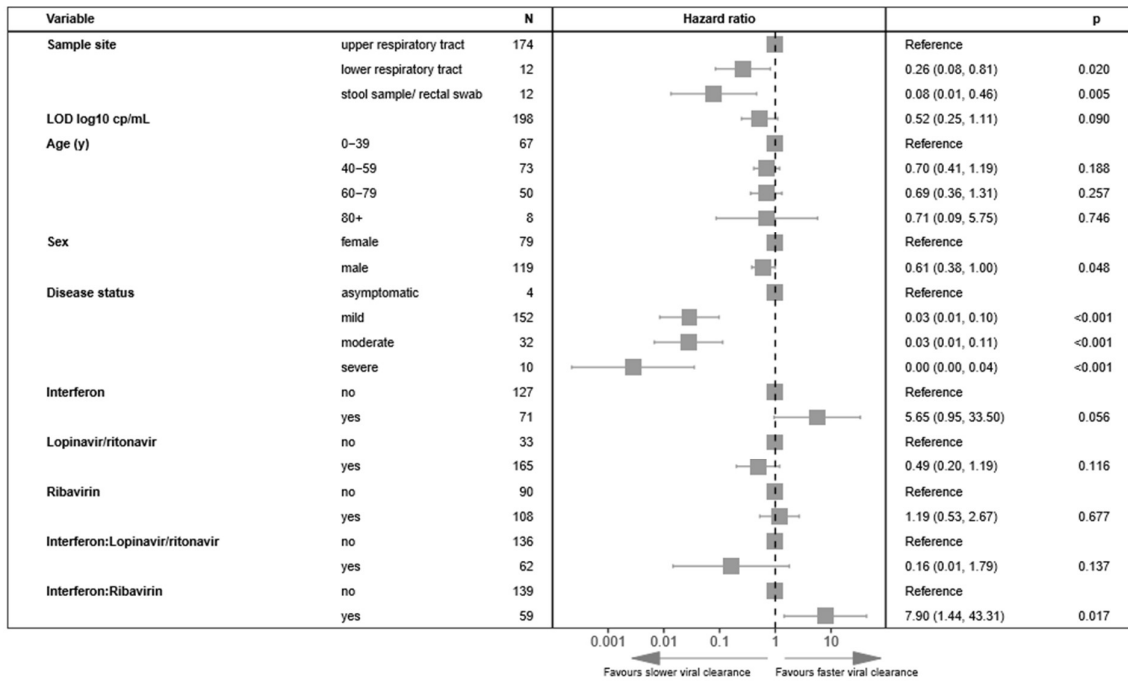


Figure S4 Multivariable Cox proportional hazard results on viral load quality 1 data from respiratory sampling sites and stool/rectal sampling sites. Adjusted hazard ratios exceeding 1 indicate virus being more likely to become undetectable

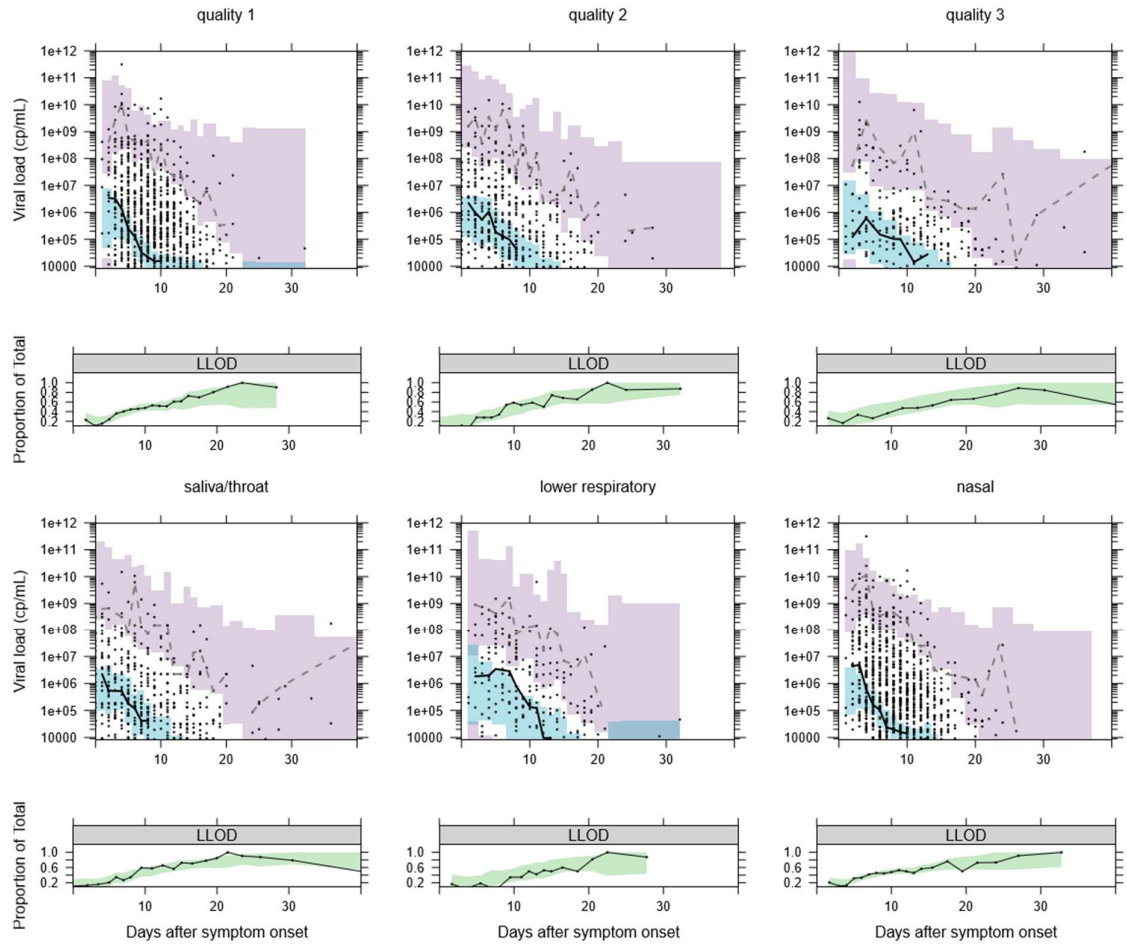


Figure S5 Visual predictive checks for the respiratory NLME model fitted to viral load data from respiratory sampling sites. For each site and each viral load quality a plot of model simulations compared with observations is given for both the continuous data (upper) and the fraction of samples below the limit of detection (lower). Black circles are observed viral loads, purple shaded area is the 95% prediction interval of the simulated 2.5th and 97.5th percentile for comparison with the observed 2.5 and 97.5th percentile (dashed lines). The blue shaded area is the 95% prediction interval of the 50th percentile to compare with the continuous black line. In the lower plot the observed proportion of samples below the lower limit of detection (LLOD) are shown as a black line and compared with the 95% prediction interval of the model predicted proportion of samples below the LLOD (green shaded area)

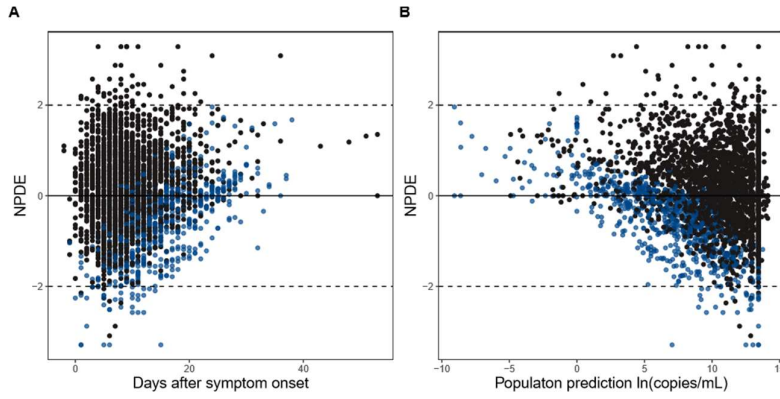


Figure S6 Numerical prediction distribution errors (NPDE) based diagnostics for final model. Black dots, data above lower limit of detection; blue dots, data below limit if detection

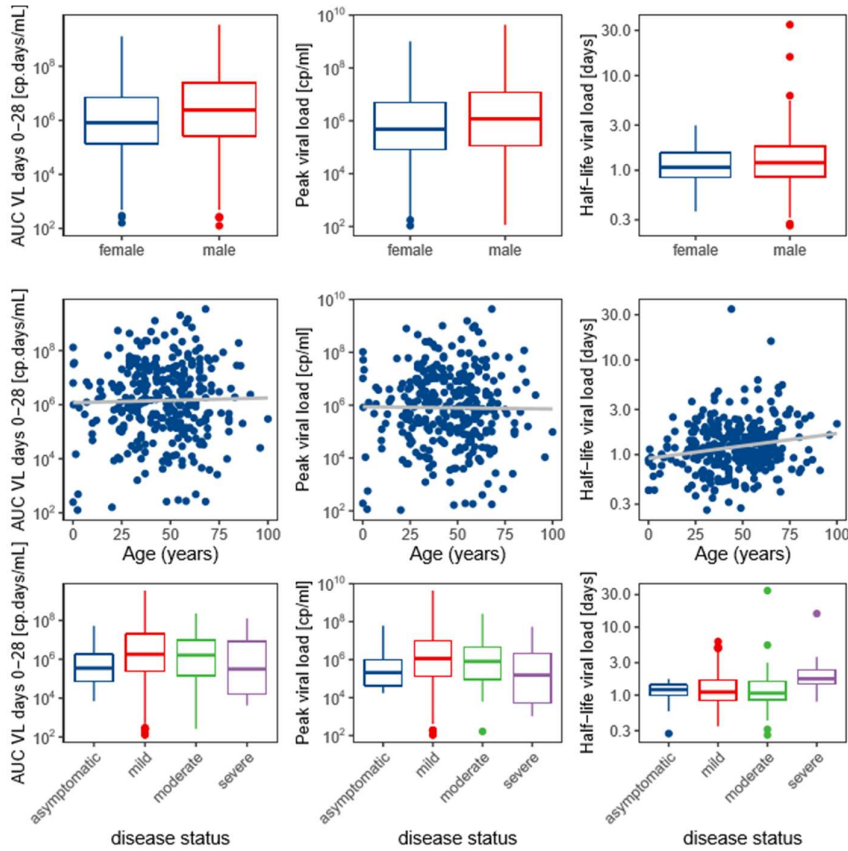


Figure S7 NLME model derived parameters versus covariates for final model. Plot of model-predicted viral area under the curve from day 0-28 of symptom onset; area under the viral load curve AUC(0-28), peak viral load and viral elimination half-life compared with sex, age and disease severity