

August 29th, 2016

Genome sequencing of Carbapenem-resistant *Acinetobacter baumannii* (CRAB) and companion isolates from RBWH – Batch 4 Summary Report (v2)

PREVIOUS REPORTS

To date we have received 4 batches of isolates for sequencing and analysis surrounding the CRAB outbreak at RBWH, totaling 58 isolates (30 CRAB, 2 carbapenem-sensitive *A. baumannii*, 8 ESBL+ *Klebsiella pneumoniae*, 1 carbapenem-resistant *K. pneumoniae*, 1 non-ESBL *K. pneumoniae*, 1 carbapenem resistant *K. pneumoniae*, 7 meropenem-resistant *Pseudomonas aeruginosa*, 5 *Serratia marcescens*, 1 carbapenem-sensitive *Enterobacter cloacae* and 2 carbapenem-resistant *E. cloacae*). We also obtained 15 historical CRAB isolates from between 2000 – 2016 (3 from March/May 2016, 2 from 2015, 10 from between 2000-2006). Analysis and results for these isolate are available as separate reports.

CURRENT REPORT

This report focuses on the final analysis (batch 4) of 10 new isolates related to the RBWH CRAB outbreak. Isolates were received on the 18th of August and include 1 *S. marcescens*, 7 CRAB and 1 ESBL+ *K. pneumoniae* (Table 1). We also received a borderline carbapenem-resistant *A. baumannii* isolate from a separate location. Sequencing was undertaken at the Australian Centre for Ecogenomics (ACE) on the 22nd August and data was received Wednesday 24th August.

KEY RESULTS

- The new *S. marcescens* isolate from patient 13 (█), who was previously colonized with CRAB, appears unrelated to the *S. marcescens* isolated from the index patient (█) (Figure 1).
- The borderline carbapenem-resistant *A. baumannii* is sequence type (ST) 1122, and unlikely to be related to the current RBWH outbreak CRAB isolates (ST1050). It is also unrelated to the previously isolated carbapenem-resistant *A. baumannii*, differing by roughly 40,000 single nucleotide polymorphisms (SNPs) (Figure 2).
- The remaining CRAB isolates (n=7) were all found to be ST1050 and differ by less than 13 core SNPs (Figure 3), indicating further transmission within the ICU ward.
- The additional ESBL+ *K. pneumoniae* isolated from a new patient (patient 19, █) was found to be ST515, which is the same as all previously isolated *K. pneumoniae* from this outbreak. It was also found to have an identical antibiotic resistance gene profile and differed by only 2 additional SNPs compared to isolates taken from the index patient (█) and patient 6 (█) (Figure 4). This represents further ongoing transmission of *K. pneumoniae* within the ICU ward.

For an overview of the complete transmission pathway/patient network, see figures 5 and 6 and the end of this document.

Table 1: Batch 4 Isolates: Isolates were received on the 18th August 2016. Genomic DNA was prepared on the 19th August and delivered to the Australian Centre for Ecogenomics (ACE) on the same day. Illumina NextSeq sequencing began on Monday the 22nd August. Raw sequencing data was received on Wednesday the 24th August.

MS number	Lab number	MRN	Micro Code	Initials	Species	Site	Date	Ward	Comments
MS14424					<i>Serratia marcescens</i> (carb-S)	Rectal swab	18/07/16		New - looks different (pigmented)
MS14425					<i>A. baumannii</i> (mero MIC=1)	Perianal swab	26/07/16		Unlikely to be related
MS14426					CR-A. baum	Urine	28/07/16		New
MS14427					CR-A. baum	ETA	2/08/16		Previous +ve CRAB
MS14428					CR-A. baum	Swab buttock	1/08/16		New
MS14429					CR-A. baum	Swab buttock	1/08/16		New
MS14430					CR-A. baum	Blood	16/05/16		Previous Serratia mixed isolate
MS14431					CR-A. baum	Blood	7/05/16		Index isolate
MS14432					CR-A. baum	Wound swab	8/08/16		New
MS14433					<i>K. pneumoniae</i> (ESBL)	Rectal swab	8/08/16		New

This report is for research use only – methods described here are not NATA accredited.

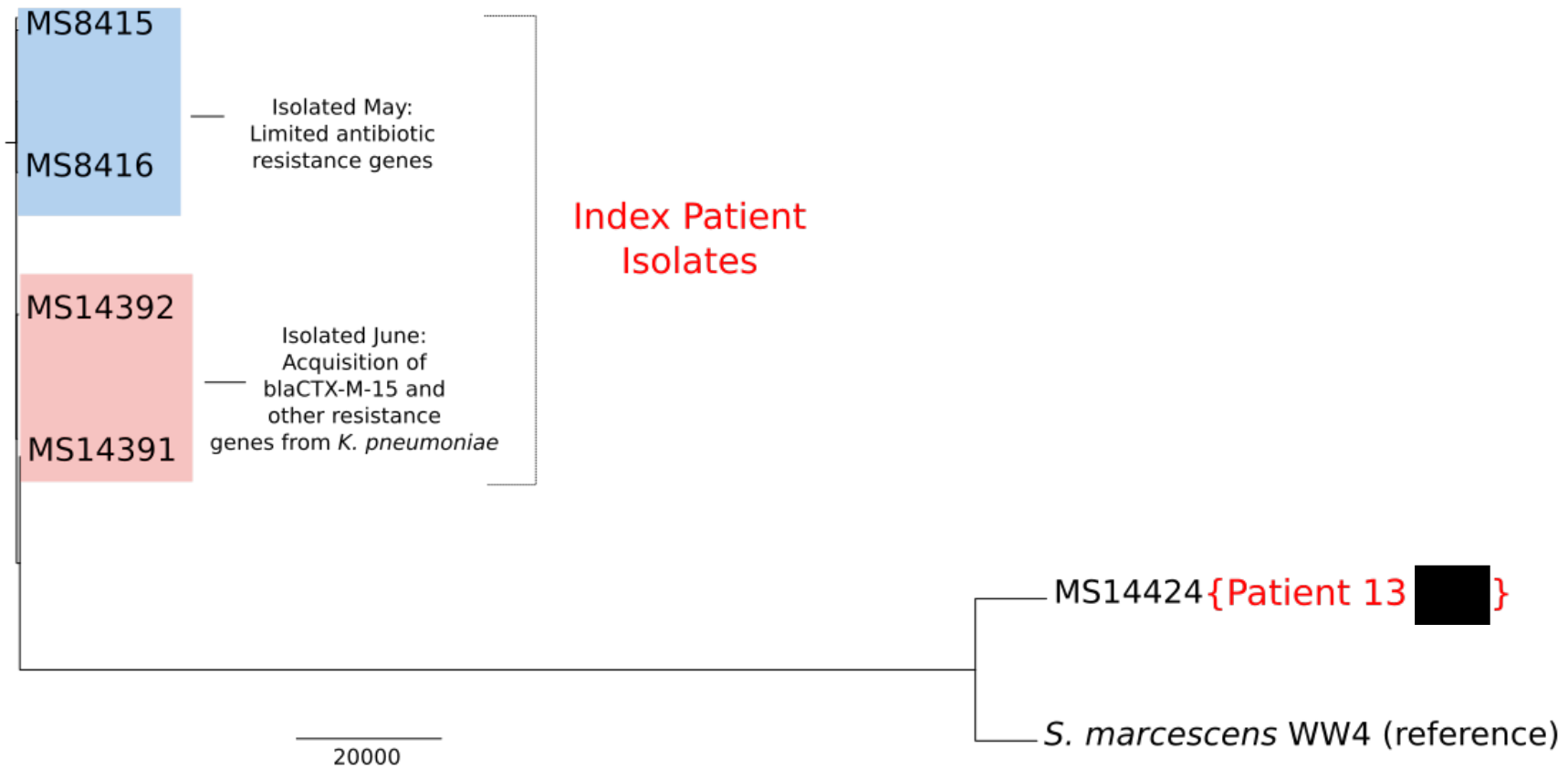


Figure 1: New *S. marcescens* isolate from patient 13 [REDACTED] is unrelated to 4 isolates previously from index patient [REDACTED]: Branch lengths represent core SNP differences (172993 SNPs overall).

This report is for research use only – methods described here are not NATA accredited.

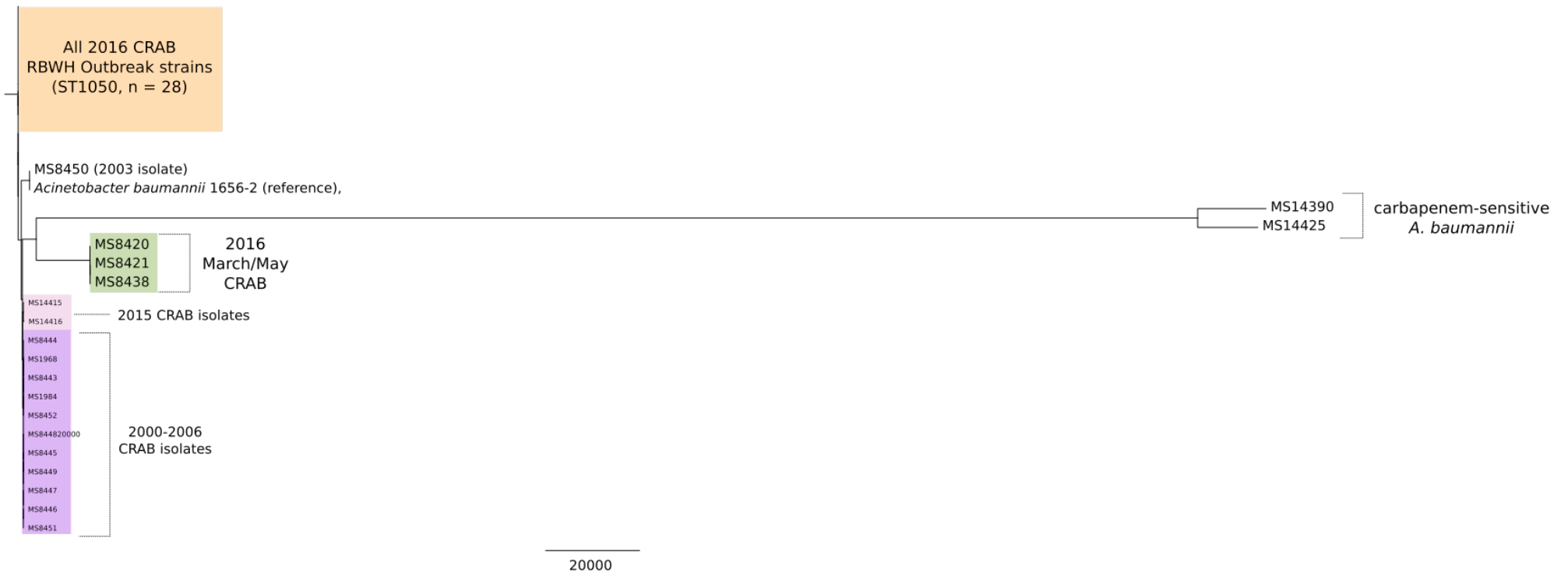


Figure 2: Summary of relationship between CRAB isolates analysed over the course of the RBWH 2016 June/July CRAB outbreak: branch lengths represent core SNP differences (186421 SNPs overall)

This report is for research use only – methods described here are not NATA accredited.

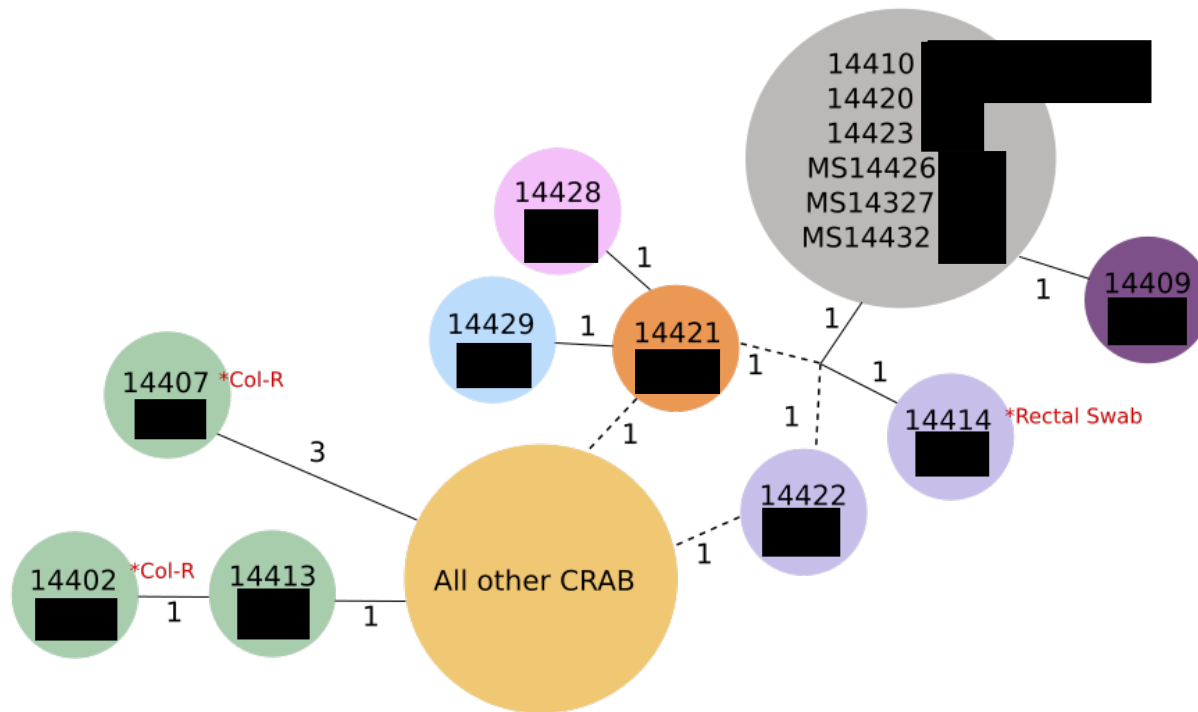


Figure 3: All ST1050 CRAB isolates from current outbreak differ by less than 13 core SNPs: Isolates within the same circles are identical at the core SNP level. Solid lines between circles represent accumulating SNPs (exact SNP distance provided). Dotted lines represent two equally likely SNP pathways.

This report is for research use only – methods described here are not NATA accredited.

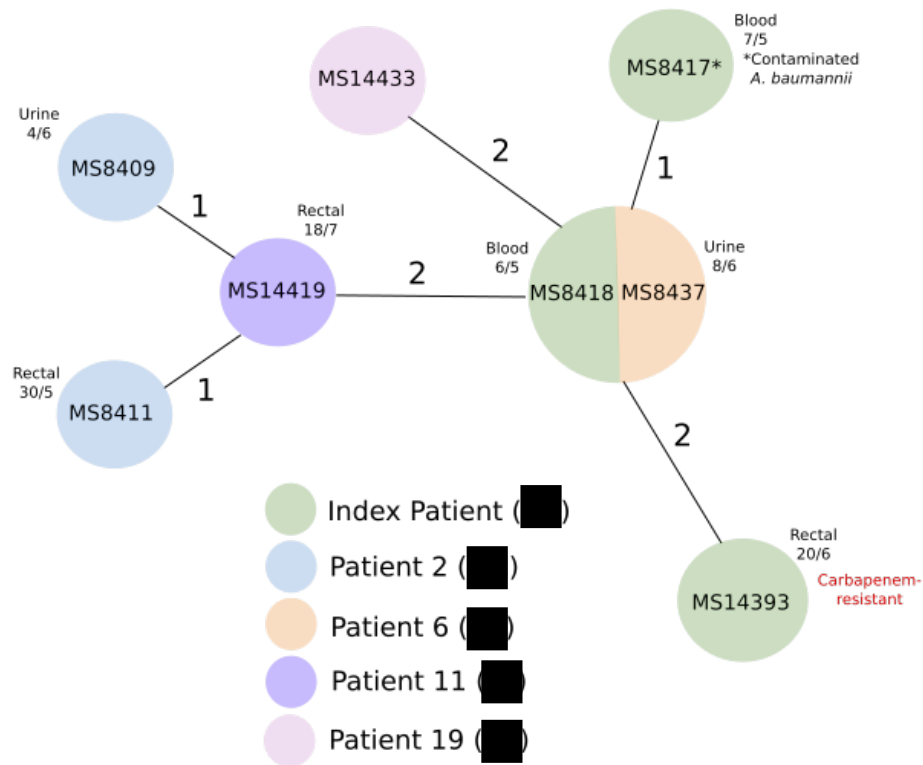
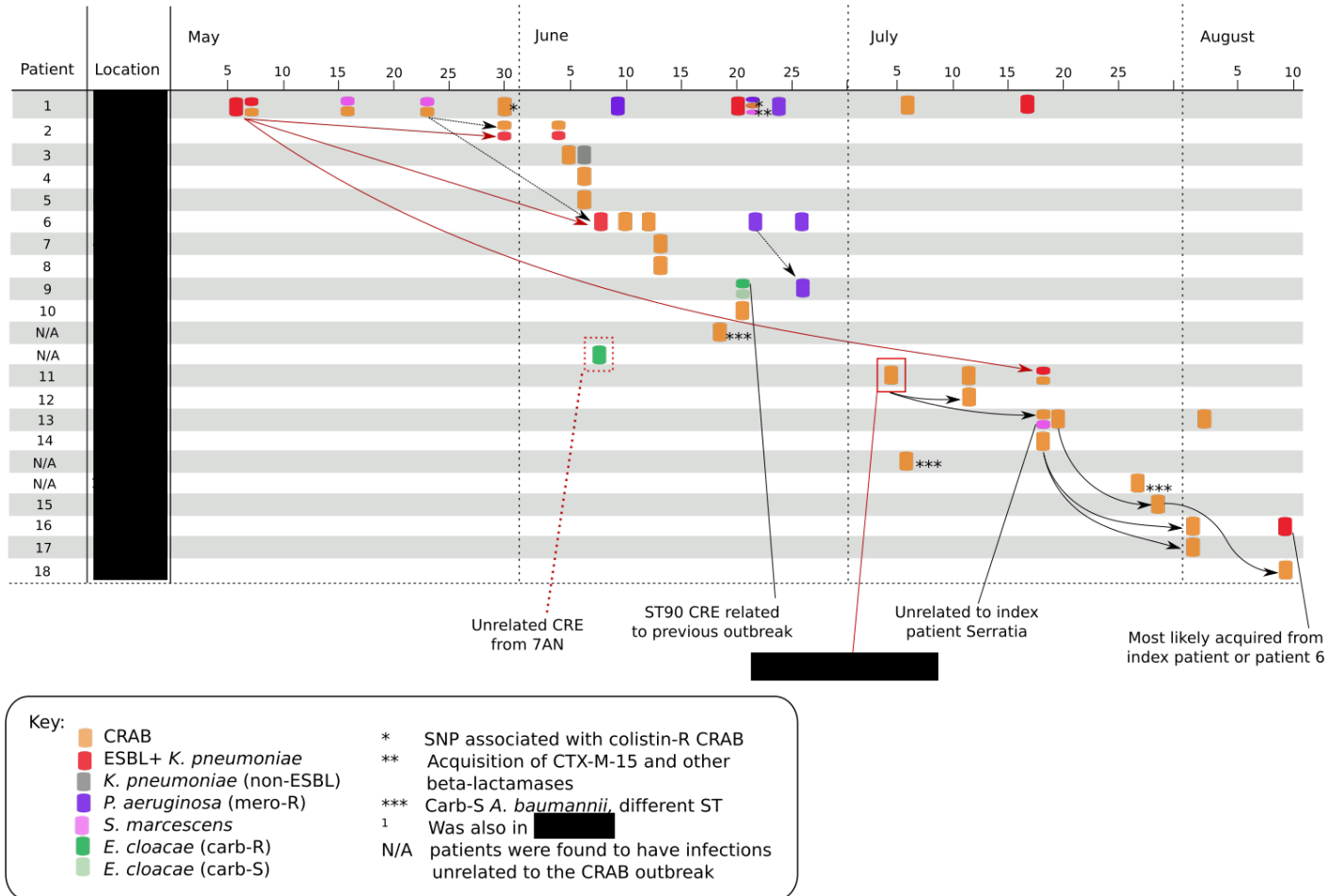


Figure 4: Ongoing transmission of *K. pneumoniae* in the RBWH ICU ward: Isolates within the same circle are identical at the core SNP level. Solid lines represent accumulation of SNPs between isolates (specific SNP distances given in figure). The additional *K. pneumoniae* (MS14433, pink) isolate was found to be two core SNPs different to isolates taken from the index patient (■■■) and patient 6 (■■■). As patients ■■■ and ■■■ had identical *K. pneumoniae* infections, we cannot determine where patient SA has most likely acquired the infection using genomics alone.

This report is for research use only – methods described here are not NATA accredited.

Overall isolate transmission network (Figure 5):

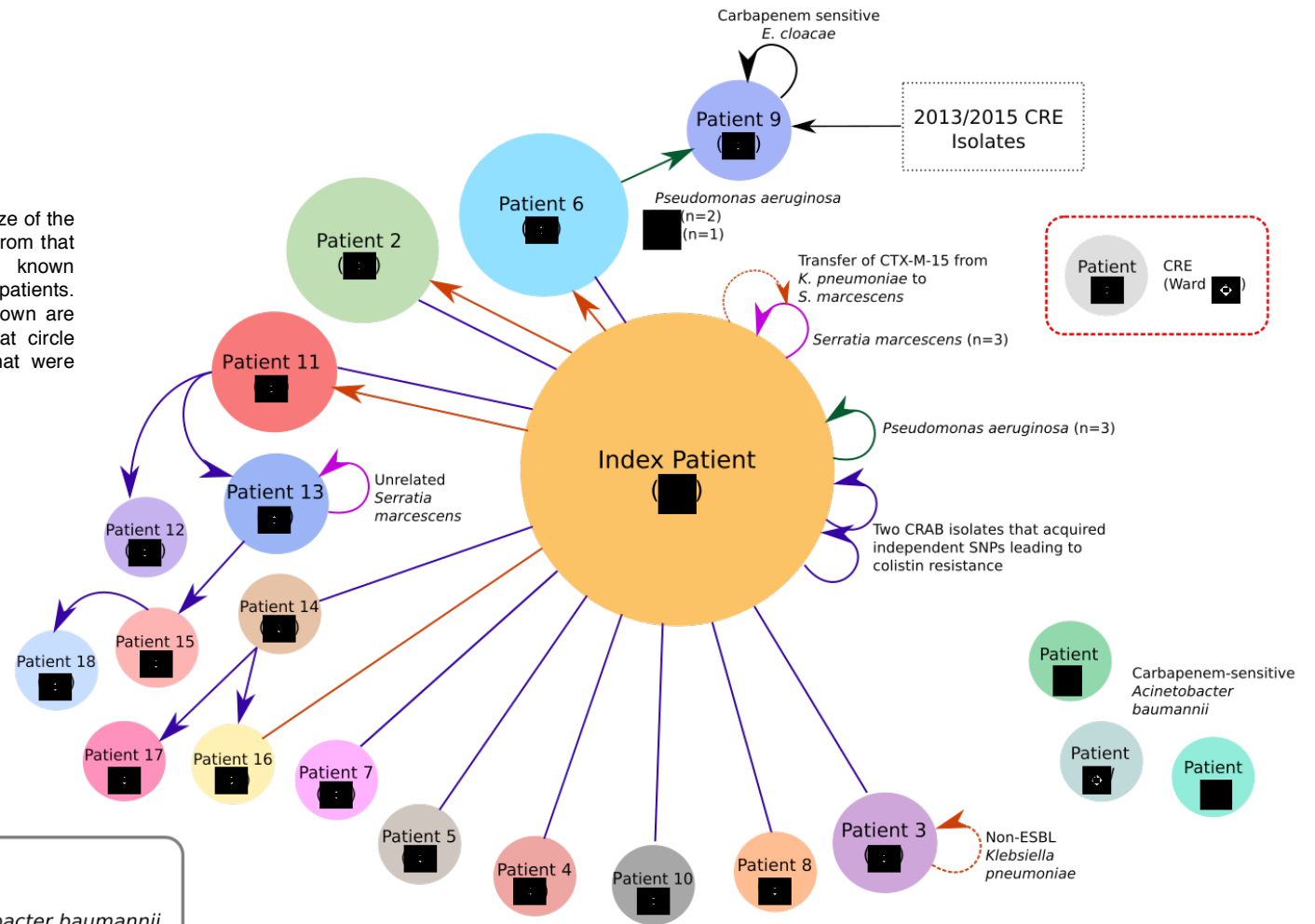


This report is for research use only – methods described here are not NATA accredited.

Overall patient network (Figure 6):

Figure 1:

Each circle represents one patient, where the size of the circle is proportional to the number of isolates from that patient. Lines with arrows represent known transmissions from one patient to other patients. Transmissions where the directionality is unknown are represented with lines only. Arrowed lines that circle back to a single patient represent isolates that were patient specific and not transmitted.



This report is for research use only – methods described here are not NATA accredited.

Methods:

Bacterial culture: Isolates were delivered to the Schembri Lab on the 18th August 2016. Bacterial culture from each plate was scraped off and resuspended in 5ml LB broth. Pellet from 1.8 ml of this resuspension was then used for genomic DNA extraction using MoBio UltraClean[®] Microbial DNA isolation kit, as per manufacturers instructions.

Library preparation and genome sequencing: Isolate DNA was sequenced at the Australian Centre for Ecogenomics (ACE) at UQ. DNA was quantitated using Qubit and libraries prepared using Nextera XT library prep (Illumina) with Nextera XT indexes, as per manufacturer's instructions. Resulting libraries were quantitated with TapeStation, pooled and loaded onto 1/200th of a flow cell per sample and sequenced on the NextSeq500 (Illumina) using a 2 x 150bp High Output V2 kit. Approximately 2 million paired end reads from each isolate were used in subsequent bioinformatics analyses.

QC: Raw reads obtained from ACE were initially checked for base pair quality using FastQC (www.bioinformatics.babraham.ac.uk/projects/). Reads were determined to be poor quality at either end, and were subsequently hard trimmed to 100 bp using Nsoni clip (10 bp from start, 40 bp from end) (<https://github.com/Victorian-Bioinformatics-Consortium/nesoni>). Raw reads were then analysed using Kraken (<https://ccb.jhu.edu/software/kraken/>) to check for contamination.

CRAB: Raw reads obtained from ACE were analysed using Nullarbor (<https://github.com/tseemann/nullarbor>) to determine sequence type (ST), antibiotic resistance gene profile, phylogeny and core SNP distances using the reference *A. baumannii* Global Clone (GC) 2 strain 1656-2 (GI:384129960). ST1050 CRAB isolates were then analysed using Nsoni to determine core SNP distances between isolates.

ESBL-K. pneumoniae: Raw reads obtained from ACE were analysed using Nullarbor to determine sequence type (ST), antibiotic resistance gene profile, phylogeny and core SNP distances using the reference *Klebsiella pneumoniae subsp. pneumoniae* MGH 78578 (GI:150953431). The new *K. pneumoniae* isolate was then analysed using Nsoni to determine core SNP distances between all ESBL *K. pneumoniae* in this outbreak.

Serratia marcescens: Raw reads obtained from ACE were analysed using Nullarbor to determine sequence type (ST), antibiotic resistance gene profile, phylogeny and core SNP distances using the reference *Serratia marcescens* WW4 (GI:448239774).

TIMELINE: DNA preparation was carried out on the 19th August 2016 (6 hours) and delivered to the ACE sequencing facility, UQ (<http://ecogenomic.org/services.html>) for library preparation on the same day (4 hours). Sequencing on Illumina NextSeq began Monday 22nd (30 hours). Raw sequence data was delivered to the Beatson Group Wednesday 24th June 2016 for bioinformatics analysis and reporting (8 hours).

Bioinformatic analysis: Leah W Roberts

DNA preparation: Leah W Roberts

Report preparation: Leah W Roberts

For further information about these results contact lab head A/Prof Scott Beatson (s.beatson@uq.edu.au)

This report is for research use only – methods described here are not NATA accredited.