

June 22, 2016

Preliminary report: Genome sequencing of Carbapenem-resistant *Acinetobacter baumannii* (CRAB) and companion isolates from RBWH (version 1)

Summary: Genome sequencing of 18 clinical isolates (11 carbapenem-resistant *Acinetobacter baumannii*, 6 *K. pneumoniae* and 1 carbapenem-resistant *Pseudomonas aeruginosa*) was carried out at The University of Queensland (UQ). These were cultured from patients at RBWH, 6 involved in the current suspected CRAB outbreak and 3 identified earlier in 2016 as CRAB-colonised or infected. Two historical CRAB strains from 2006 were also sequenced for comparison.

Two separate introductions of CRAB into the ICU / Burns Unit have occurred in 2016. The first in **March-April** involved 3 confirmed cases infected or colonized with **closely related ST930 strains carrying an OXA-134 carbapenemase**. The more recent introduction in **May-June** involved a divergent **ST1050** strain belonging to the **International Clone 2 (IC2)**, and **carried OXA-23 carbapenemase**. This has been confirmed by genomics in 5 patients from the current outbreak during May-June 2016, although a further 3 cases remain to be analysed. These current strains tightly cluster by single nucleotide polymorphism (SNP) profiling, confirming transmission between patients. To date, no CRAB strains have yet been identified from the environmental sampling. **All 2016 clusters were different from the 2006 outbreak strains, which were ST208 with OXA-23.**

Simultaneously there has been evidence of **transmission between 4 patients in the current outbreak of an ESBL (CTX-M-15)-producing *Klebsiella pneumoniae*** which are also closely related (all are ST515). There was no evidence of inter-species transmission of carbapenemase genes. **The single carbapenem-resistant *Pseudomonas aeruginosa* isolated in blood from one patient did not carry any acquired carbapenemase genes of significance.**

This preliminary report will be updated with further analysis and results following additional sequencing of strains delivered to UQ after preparation of the first batch of samples.

Table 1: Samples: The following were delivered and sequenced at UQ on the Illumina NextSeq instrument, commencing on the evening of 20th June

Strain	Lab no	MRN	Initials	Species	Site	Date	Ward
MS8409				K. pneumoniae (ESBL)	Urine	4/06/2016	
MS8410				CR-A. baumannii	Blood	4/06/2016	
MS8411				K. pneumoniae (ESBL)	Rectal swab	30/05/2016	
MS8412				CR-A. baumannii	Rectal swab	30/05/2016	
MS8413				CR-A. baumannii	Wound swab	6/06/2016	
MS8414				CR-A. baumannii *	Rectal swab	30/05/2016	
MS8417				K. pneumoniae (ESBL)	Blood	7/05/2016	
MS8418				K. pneumoniae (ESBL)	Blood	6/05/2016	
MS8419				CR-A. baumannii	ETA	6/06/2016	
MS8420				CR-A. baumannii	Wound swab	20/04/2016	
MS8421				CR-A. baumannii	Blood	20/03/2016	
MS8422				CR-A. baumannii	ETA	5/06/2016	
MS8423				K. pneumoniae (non-ESBL)	ETA	6/06/2016	
MS8436				CR-A. baumannii	Tissue (buttock)	10/06/2016	
MS8437				K. pneumoniae (ESBL)	Urine	8/06/2016	
MS8438				CR-A. baumannii	Blood	6/03/2016	
MS8439				Pseudomonas aeruginosa (mero-R)	Blood	9/06/2016	
MS8440				CR-A. baumannii	Blood	12/06/2016	

*Note: identification incorrect, confirmed as *K. pneumoniae* by WGS – original isolate to be retrieved and re-sequenced

This report is for research use only – methods described here are not NATA accredited.

GENOME ANALYSIS RESULTS:

Carbapenem-resistant *A. baumannii* (CRAB)

All the *A. baumannii* strains from the current ICU cluster (from May to June 2016) are closely related to each other, and belong to the International Clone 2 (IC2), which is commonly seen in Asia and Oceania¹, and are sequence type (ST) 1050 according to the Oxford MLST scheme. This is in contrast to a smaller cluster of 3 cases for March-April 2016, separated by almost 50,000 SNPs to the more recent outbreak strains (see SNP tree image in Figure 1) and type as ST930. This confirms two separate introductions of CRAB into the hospital. It is noted that the March-April 2016 cluster are closely related to each other, suggesting limited transmission at the time. It is also notable that both clusters are different from the strains cultured in the 2006 outbreak, which belong to ST208.

The strains all carry between 13-14 acquired resistance genes (see Table 2). The May-June cluster strains and the 2006 strains carried the carbapenemase OXA-23 (a carbapenemase gene commonly seen in CR-*A. baumannii*^{2,3}), whereas these were absent in the March-April cluster. The March-April strains carried the OXA-134 carbapenemase, which is usually acquired from *Acinetobacter lwoffii*,⁴ as well as an IMP-26 carbapenemase – this is of significance, as the IMP gene appears closely related to the IMP-4-like carbapenemase commonly seen in Queensland *Enterobacter* strains.⁵ This will undergo additional genomic investigation. All *A. baumannii* possess various OXA-51-like beta-lactamases, which may confer carbapenem resistance if highly expressed.² All *A. baumannii* carry an *ampC* beta-lactamase, ADC-25, which may be expressed at high level by the addition of an insertion sequence (ISAb1) in proximity to the gene, conferring resistance to cephalosporins (and will be sought during ongoing analysis of the data).⁶

It is also notable that recent strains carried the *armA* methylase gene, which confers broad aminoglycoside resistance (including amikacin), which conforms to the high MICs observed for aminoglycosides in many of these strains.

All strains also carried additional resistance genes for antibiotic classes such as sulphonamides, chloramphenicol and macrolides/lincosamides. The March-April 2016 strains also possessed resistance genes for folate inhibitors (such as trimethoprim) and rifampicin. In contrast to the 2006, recent 2016 isolates have no resistance genes to tetracyclines (also reflected in the MIC data).

Fluoroquinolone resistance mutations are not readily detected by most automated resistance gene annotation pipelines, and will require some additional data analysis to be confirmed.

This report is for research use only – methods described here are not NATA accredited.

Table 2: Sequence type and antibiotic resistance gene profiles of CR-*A. baumannii*

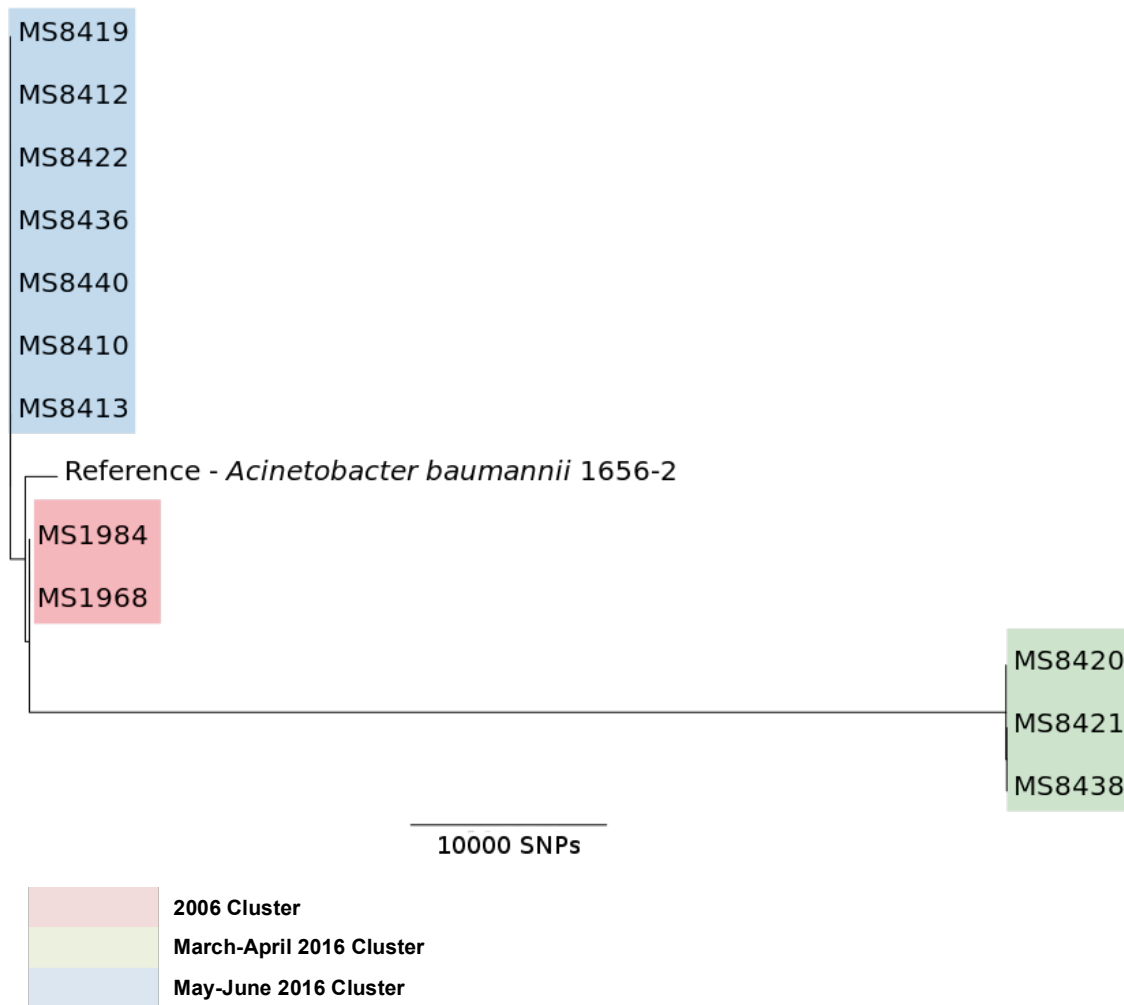
Strain	Case	ST	Species	Aminoglycoside							Beta-lactamase						Phenicols		Folate	MLS _B		Sulphonamide		Tetracycline	Rifampicin
				aac(3)-I	aac(3)-Ia	aadA1	aph(3')-Ic	armA	strA	strB	blaADC-25	blaIMP-26	blaOXA-134	blaOXA-23	blaOXA-51-like	blaTEM-1D	catB8	floR	dfrA18	mph(E)	msr(E)	sul1	sul2	tet(B)	ARR-3
MS1968	-	208	<i>A. baumannii</i>	✓	✓	✓	✓	.	✓	✓	✓	.	.	✓	✓	✓	✓	✓	✓	.
MS1984	-	208	<i>A. baumannii</i>	✓	✓	✓	✓	.	✓	✓	✓	.	.	✓	✓	✓	✓	✓	✓	.
MS8410		1050	<i>A. baumannii</i>	.	.	✓	✓	✓	✓	✓	✓	.	.	✓	✓	✓	✓	.	.	.	✓	✓	✓	✓	.
MS8412		1050	<i>A. baumannii</i>	.	.	✓	✓	✓	✓	✓	✓	.	.	✓	✓	✓	✓	.	.	.	✓	✓	✓	✓	.
MS8413		1050	<i>A. baumannii</i>	.	.	✓	✓	✓	✓	✓	✓	.	.	✓	✓	✓	✓	.	.	.	✓	✓	✓	✓	.
MS8419		1050	<i>A. baumannii</i>	.	.	✓	✓	✓	✓	✓	✓	.	.	✓	✓	✓	✓	.	.	.	✓	✓	✓	✓	.
MS8420		930	<i>A. baumannii</i>	✓	✓	✓	✓	✓	.	✓	✓	.	✓	✓	✓	✓	✓	✓	✓	✓
MS8421		930	<i>A. baumannii</i>	✓	✓	✓	✓	✓	.	✓	✓	.	✓	✓	✓	✓	✓	✓	✓	✓
MS8422		1050	<i>A. baumannii</i>	.	.	✓	✓	✓	✓	✓	✓	.	.	✓	✓	✓	✓	.	.	.	✓	✓	✓	✓	.
MS8436		1050	<i>A. baumannii</i>	.	.	✓	✓	✓	✓	✓	✓	.	.	✓	✓	✓	✓	.	.	.	✓	✓	✓	✓	.
MS8438		930	<i>A. baumannii</i>	✓	✓	✓	✓	✓	.	✓	✓	.	✓	✓	✓	✓	✓	✓	✓	✓
MS8440		1050	<i>A. baumannii</i>	.	.	✓	✓	✓	✓	✓	✓	.	.	✓	✓	✓	✓	.	.	.	✓	✓	✓	✓	.

	2006 Cluster
	March-April 2016 Cluster
	May-June 2016 Cluster

✓	Presence confirmed
✓	Requires confirmation
.	Absent

This report is for research use only – methods described here are not NATA accredited.

Figure 1: SNP tree for *A. baumannii* strains isolated from patients in May-June 2016, March-April 2016 and 2006 clusters



This report is for research use only – methods described here are not NATA accredited.

K. pneumoniae (ESBL-producer)

All the *K. pneumoniae* strains identified as companion isolates from CRAB infected or colonised patients **were also found to be closely related**, being all of the same sequence type (**ST515**) and were similar by SNP profiling (details to follow). All carried 15 identical resistance genes, including the common **CTX-M-15 type ESBL**, as well as OXA-1, TEM-1 and SHV-1 (as always seen in *K. pneumoniae*) narrow spectrum beta-lactamases. However, if these latter genes are highly expressed, they may further contribute to broad-spectrum beta-lactam resistance.

This confirms that transmission of this significant pathogen between patients was likely to have occurred in parallel to the CRAB outbreak.

Table 3: Sequence type and antibiotic resistance gene profiles of *K. pneumoniae*

Strain	Case	Species	ST	Aminoglycoside			Beta-lactamase				Phenicols			Fosfomycin	MLS _B	Quinolones		Sulphonamides
				aac(3)-IIa	aac(6')Ib-cr	aph(3')-Ic	blaCTX-M-15	blaOXA-1	blaSHV-1	blaTEM-1B	catA2	catB3	floR	fosA	mph(A)	oqxA	QnrS1	sul2
MS8409		<i>K. pneumoniae</i>	515	✓	✓	✓	✓	✓	✓	✓	✓	✓	✓	✓	✓	✓	✓	✓
MS8411		<i>K. pneumoniae</i>	515	✓	✓	✓	✓	✓	✓	✓	✓	✓	✓	✓	✓	✓	✓	✓
MS8418		<i>K. pneumoniae</i>	515	✓	✓	✓	✓	✓	✓	✓	✓	✓	✓	✓	✓	✓	✓	✓
MS8423		<i>K. pneumoniae</i>	515	✓	✓	✓	✓	✓	✓	✓	✓	✓	✓	✓	✓	✓	✓	✓
MS8437		<i>K. pneumoniae</i>	515	✓	✓	✓	✓	✓	✓	✓	✓	✓	✓	✓	✓	✓	✓	✓

This report is for research use only – methods described here are not NATA accredited.

Carbapenem-resistant *Pseudomonas aeruginosa*

This single isolate was shown to contain an OXA-50 type beta-lactamase, which is a naturally occurring enzyme found in *P. aeruginosa* and is usually of limited clinical significance⁷. In addition to *aph(3')-IIb* aminoglycoside and *catB7* chloramphenicol resistance genes were present. **There was no evidence of carbapenemase acquired from the *A. baumannii* strains.** It is most likely that the multi-drug resistant (including to carbapenems) phenotype results from multiple chromosomal mutations, which will be investigated further.

METHODS:

Bacterial culture: Isolates were delivered to the Schembri Lab at UQ in 2 stages (10th and 15th June 2016). Plate cultures were completely resuspended in 2 ml luria-bertani (LB) broth. 500 µl of this resuspension was used to inoculate 5ml LB broth, which was incubated for 1 hour at 37 degrees Celsius. Genomic DNA was then extracted using MoBio UltraClean[®] Microbial DNA isolation kit, as per manufacturers instructions.

Library preparation and genome sequencing: Isolate DNA was sequenced at the Australian Centre for Ecogenomics (ACE) at UQ. DNA was quantitated using Qubit and libraries prepared using Nextera XT library prep (Illumina) with Nextera V2 Indexes, as per manufacturer's instructions. Resulting libraries were quantitated with qPCR, pooled and loaded onto 1/100th of a flow cell per sample and sequenced on the NextSeq (Illumina) using a 2 x 150bp High Output kit. 1.6 million paired end reads from each isolate were used in subsequent bioinformatics analyses.

QC: Raw reads obtained from ACE were initially checked for base pair quality using FastQC (www.bioinformatics.babraham.ac.uk/projects/). Raw reads were then analysed using Kraken⁸ to check for contamination. Sample **MS8414**, initially thought to be a CRAB, was determined to be a *K. pneumoniae* according to the Kraken analysis. The original CRAB isolate(s) from this patient (████) will be retrieved from storage and re-sequenced. Samples **MS8417** and **MS8423** (Both *K. pneumoniae*) were found to be contaminated with reads matching to *A. baumannii* (approximately 3% and 30% contamination respectively) and so were not included in the current data analysis.

Bioinformatic analysis

CRAB: Raw reads obtained from ACE were analysed using Nullarbor⁹ to determine sequence type (ST), antibiotic resistance gene profile, phylogeny and core SNP distances using the reference *A. baumannii* Global Clone (GC) 2 strain 1656-2 (GI:384129960). Antibiotic resistance gene content was further checked using a read-mapping tool (srst2) against the ARG-ANNOT database¹⁰. Multi-locus sequencing typing (MLST) was also performed using srst2 against the *A. baumannii* Oxford MLST scheme (pubmlst.org).

ESBL-*K. pneumoniae*: Raw reads obtained from ACE were analysed using Nullarbor⁹ to determine sequence type (ST), antibiotic resistance gene profile, phylogeny and core SNP distances using the reference *Klebsiella pneumoniae subsp. pneumoniae* MGH 78578 (GI:150953431).

This report is for research use only – methods described here are not NATA accredited.

P. aeruginosa: Raw reads for our *P. aeruginosa* isolate were analysed directly to determine antibiotic resistance gene content using srst2 against the ARG-ANNOT database.

TIMELINE: DNA preparation was carried out on 11th and 15th June following acquisition of isolates (4 hours) and delivered to ACE sequencing facility, UQ (<http://ecogenomic.org/services.html>) for library preparation on Thursday 16th June (4 hours). Sequencing on Illumina NextSeq began Monday 20th (30 hours). Raw sequence data was delivered to the Beatson Group Wednesday 22nd June 2016 for bioinformatics analysis and reporting (8 hours).

Bioinformatic analysis: Leah W Roberts, Dr Brian Forde.

DNA preparation: Leah W Roberts (Advised by Dr Minh-Duy Phan, Mark Schembri Lab group)

Report preparation: Patrick Harris, Leah W Roberts, Dr Brian Forde

For further information about these results contact lab head A/Prof Scott Beatson (s.beatson@uq.edu.au)

REFERENCES:

1. Kamolvit W, Sidjabat HE, Paterson DL. Molecular Epidemiology and Mechanisms of Carbapenem Resistance of Acinetobacter spp. in Asia and Oceania. *Microb Drug Resist* 2015; **21**(4): 424-34.
2. Peleg AY, Seifert H, Paterson DL. Acinetobacter baumannii: emergence of a successful pathogen. *Clin Microbiol Rev* 2008; **21**(3): 538-82.
3. Evans BA, Amyes SG. OXA beta-lactamases. *Clin Microbiol Rev* 2014; **27**(2): 241-63.
4. Figueiredo S, Poirel L, Seifert H, Mugnier P, Benhamou D, Nordmann P. OXA-134, a naturally occurring carbapenem-hydrolyzing class D beta-lactamase from Acinetobacter Iwoffii. *Antimicrob Agents Chemother* 2010; **54**(12): 5372-5.
5. Sidjabat HE, Townell N, Nimmo GR, et al. Dominance of IMP-4-producing enterobacter cloacae among carbapenemase-producing Enterobacteriaceae in Australia. *Antimicrob Agents Chemother* 2015; **59**(7): 4059-66.
6. Munoz-Price LS, Weinstein RA. Acinetobacter infection. *N Engl J Med* 2008; **358**(12): 1271-81.
7. Girlich D, Naas T, Nordmann P. Biochemical characterization of the naturally occurring oxacillinase OXA-50 of Pseudomonas aeruginosa. *Antimicrob Agents Chemother* 2004; **48**(6): 2043-8.
8. Wood DE, Salzberg SL. Kraken: ultrafast metagenomic sequence classification using exact alignments. *Genome Biol* 2014; **15**(3): R46.
9. Seemann T. Nullarbor v 0.8-dev. 2015. <https://github.com/tseemann/nullarbor2016>.
10. Gupta SK, Padmanabhan BR, Diene SM, et al. ARG-ANNOT, a new bioinformatic tool to discover antibiotic resistance genes in bacterial genomes. *Antimicrob Agents Chemother* 2014; **58**(1): 212-20.

This report is for research use only – methods described here are not NATA accredited.