

Supplementary Material

Supplementary Methods:

Illumina sequencing:

All isolates collected between May-September 2016 (and all historically collected isolates) were sequenced at the Australian Centre for Ecogenomics (ACE) Sequencing Service, University of Queensland, Brisbane, Australia. DNA was quantitated using Qubit and libraries prepared using Nextera XT library prep (Illumina) with Nextera XT/V2 Indexes, as per manufacturer's instructions. Resulting libraries were quantitated with either qPCR or Tapestation, pooled and each sample loaded onto either 1/100th or 1/200th of a flow cell and sequenced on the NextSeq (Illumina) using a 2 x 150bp High Output V2 kit.

All subsequent isolates (from October 2016 onwards) were sequenced at the Public Health Microbiology Laboratory at Queensland Forensic and Scientific Services, Brisbane, Australia. All libraries were prepared using the Nextera XT DNA preparation kit (Illumina) and sequencing was performed on a NextSeq 500 (Illumina) with 2x150bp chemistry, NextSeq Midoutput kit v2.5.

Bioinformatic analysis for clinical reporting

Methodologies for bioinformatic analysis and communication of Illumina WGS data during primary outbreak in 2016 (June 22, July 16, Aug 2, Aug 29) are outlined below:

25 Quality control and *de novo* assembly of Illumina WGS data and comparative genome
26 analysis were carried out as described in the main document. Raw reads were analysed
27 using Nullarbor (<https://github.com/tseemann/nullarbor>) to determine MLST,
28 antibiotic resistance gene profile, and core SNP phylogeny using species-specific
29 reference sequences. Closest publicly available complete genomes were chosen as
30 reference sequences where available (*Acinetobacter baumannii* Global Clone (GC) 2
31 strain 1656-2 (GI:384129960); *Klebsiella pneumoniae subsp. pneumoniae* MGH 78578
32 (GI:150953431); *Serratia marcescens* WW4 (GI:448239774); *Pseudomonas*
33 *aeruginosa* PA1R (GI:558665962). For *Enterobacter cloacae* the reference was the
34 concatenated draft genome of *Enterobacter cloacae* Ecl1 (GenBank: JRFQ01000000;
35 now reassigned as *E. hormaechei*), an ST90 strain isolated from a burns patient at the
36 RBWH ICU in 2015. Antibiotic resistance gene content and MLST was further checked
37 using srst2[1] against the ARG-ANNOT[2] database and the Oxford MLST scheme[3],
38 respectively. Plasmid Inc Typing was done based on the relaxase gene as described by
39 Compain *et al.* [4].

40

41 SNP differences between strains were determined using Nesoni
42 (<https://github.com/Victorian-Bioinformatics-Consortium/nesoni>) and evolutionary
43 relationships were determined shown as phylograms or Eburst-style matrices in which
44 nodes of identical isolates were separated by branches representing one or more core
45 SNP differences radiating from a founder (index) node. This format provided
46 consistency across reports, enabling a progressive expansion of the display figure from
47 a common anchor as each WGS batch was reported, in contrast to phylograms where
48 topology and isolate order could change substantially as the data was updated. For
49 example Supplementary Figure 2 is a close approximation of the CR-Ab tree reported

50 in August 2016 and forms the anchor to Figure 3B which shows all ST1050 CR-Ab in
51 the study.

52 Methodologies used for subsequent reports (Nov 4 2016, Mar 9 2017, Jun 20 2017, Oct
53 10 2017) were essentially the same except that the concatenated draft genome of
54 ST1050 CR-Ab MS8436 or MS14413 was used as reference sequences, Abricate (v0.6)
55 with ResFinder was used for antibiotic gene prediction, and from 2017 Nesoni
56 implemented Bowtie for alignment instead of SHRiMP.

57

58 All 2018 CR-Ab isolate genomes were initially reported to RBWH as part of an
59 Infectious Diseases demonstration project in WGS surveillance of MDR bacteria in
60 hospitals (encompassing most of this authorship group) funded by the Queensland
61 Genomics Health Alliance (now Queensland Genomics), Queensland State
62 Government, Australia.

63

64 *Pacific Biosciences sequencing:*

65 One CR-Ab isolate (MS14413) and one *K. pneumoniae* isolate (MS14393) were
66 selected for sequencing with Pacific Biosciences (PacBio) Single Molecule Real-Time
67 (SMRT) sequencing. Isolates were grown on LB agar at 37°C overnight. A single
68 colony was used to inoculate 10 ml LB broth, grown overnight at 37°C (shaking 250
69 rpm). DNA was extracted using the UltraClean® Microbial DNA Isolation Kit (MO
70 BIO Laboratories) as per manufacturer's instructions. 20kb SMRTbell libraries were
71 prepared using P6 polymerase and C4 sequencing chemistry with 7kb size selection
72 with BluePippin. Final polymerase bound libraries were sequenced using 1 SMRT cell
73 each on a PacBio RSII instrument at the University of Queensland Centre for Clinical
74 Genomics, Translational Research Institute, Brisbane, Australia.

75

76

77 *Pacific Biosciences genome assembly and annotation:*

78 PacBio genomes were assembled using Canu[5] v1.3 and manually closed using
79 Artemis[6]. A large duplicated region of ~40 kb was identified in the CR-Ab isolate
80 and resolved using read-mapping and PCR at unique borders of the duplication (see
81 below). The SMRT Analysis suite (v7.0.1.66975) was used to generate methylated
82 motif summaries and polished assemblies using the PacBio reads. Indels were further
83 corrected with Pilon[7] v1.22 using the trimmed Illumina reads mapped to the assembly
84 using BWA[8] v0.7.16a-r1181. Complete PacBio genomes were annotated using
85 Prokka[9] v1.12-beta. Insertion sequences were identified using ISSaga[10].
86 Frameshifts were corrected by manually inspecting read pileup at suspected positions
87 identified using NCBI microbial genome submission check
88 (<https://www.ncbi.nlm.nih.gov/genomes/frameshifts/frameshifts.cgi>).

89

90 *Closing the genome of CR-Ab strain MS14413:*

91 *De novo* assembly of the CR-Ab strain MS14413 PacBio reads using Canu resulted in
92 two contigs: one large contig (~4 Mb) and one small contig (~65 kb). The large contig
93 corresponded to the CR-Ab chromosome and could be circularized. Comparison of both
94 contigs to each other using the Artemis Comparison Tool (ACT) determined that the
95 smaller contig matched the ends of the chromosome perfectly except for a duplicated
96 ~4.8 kb region. Rearrangement of this region onto the contig ends and re-mapping of
97 both PacBio and Illumina reads to the chromosome (using BWA and blasr,
98 respectively) resolved the ~4.8 kb region but simultaneously identified approximately
99 twice as much read depth across a ~40 kb region on the chromosome, indicative of a

100 large collapsed repeat in our initial assembly. Comparative analysis of the smaller
101 contig (using ACT) followed by PCR at unique borders of the suspected tandem
102 duplication (Supplementary Figure 1, Supplementary Table 1) enabled resolution of the
103 region as two copies of ~41 kb. Further mapping with both the Illumina and PacBio
104 reads (using BWA[8] and blasr[11], respectively) confirmed the tandem duplication,
105 which has been included in the complete genome of CR-Ab strain MS14413 (GenBank:
106 CP054302.1).

107

108

109

110

111

112

113

114

115

116

117

118

119

120

121

122

123

124

125 **Supplementary Results:**

126

127 ~40 kb tandem duplication in CR-Ab genome

128 PacBio sequencing of CR-Ab isolate MS14413 identified a large tandem duplication of
129 approximately ~40 kb, encompassing Tn2006 as well as part of the capsule (K) region
130 (Figure 3, main text). Analysis of the other CR-Ab isolates using the Illumina *de novo*
131 assemblies found evidence for this duplication in only two related colistin resistant
132 isolates from the index patient (MS14413 [PacBio] and MS14402), suggesting that this
133 duplication arose once and was maintained by a sub-population of CR-Ab within this
134 patient for at least 36 days. The effect of this duplication on fitness is as of yet unknown.

135

136 Transmission of *K. pneumoniae* parallel to CR-Ab transmission

137 Ten ESBL-producing *K. pneumoniae* isolates were collected from 5 patients during the
138 outbreak and were all found to be ST515. Nine of the ten isolates differed by less than
139 10 core SNPs, indicating direct transmission within the ICU ward (Supplementary
140 Figure 8). A single isolate from the index patient (MS14418) was found to have an
141 additional 61 core SNPs, consistent with a hypermutator phenotype. Indeed, further
142 investigation of this isolate found an in-frame 9 bp deletion in *mutH*, resulting in the
143 loss of 3 amino acids from this protein (Supplementary Figure 9). The exact mechanism
144 behind this deletion in *mutH* and its relationship to the hypermutator phenotype remains
145 to be further elucidated.

146

147 All ESBL-positive *K. pneumoniae* isolates had identical antibiotic resistance gene
148 profiles, including the ESBL gene *bla*_{CTX-M-15}, other β -lactamases (*bla*_{TEM}, *bla*_{OXA-1})
149 and the aminoglycoside resistance gene *aac(6')Ib-cr*. Two isolates from the index

150 patient (MS14393 and MS14418) developed resistance to carbapenems, which was
151 likely due to an *IS10R* insertion in the outer membrane porin gene *ompK36*
152 (Supplementary Figure 8). Isolate MS14433 (from patient 16) also contained an *IS10R*
153 inserted into *ompK36*, however the insertion was found to be close to the 5' boundary
154 of the *ompK36* gene and based on *in silico* analysis there was no evidence that it
155 affected the function of the resulting protein. Isolate MS14393 (from the index patient)
156 also possessed a nonsense mutation in the antibiotic resistance protein repressor gene
157 *marR*, which could contribute to its overall resistance to antibiotics.

158

159 The *K. pneumoniae* isolates carry two plasmids involved in antibiotic resistance and
160 virulence

161 A single *K. pneumoniae* isolate from the index patient (MS14393) was sequenced using
162 PacBio long-read sequencing to generate a high-quality reference genome, consisting
163 of a 5,492,431 bp chromosome, a 216,803 bp IncF plasmid (pMS14393A), and a
164 125,232 bp IncA/C plasmid (pMS14393B). Most of the antibiotic resistance genes
165 resided on the IncA/C plasmid in two main loci (Supplementary Figure 6). The larger
166 IncF plasmid did not contain any antibiotic resistance genes, but did harbor several
167 heavy metal resistance operons, including resistance to copper, arsenic and mercury
168 (Supplementary figure 10).

169

170 Genomic factors affecting adhesion, biofilm formation and motility

171 Analysis of SNP differences between the ST1050 CR-Ab isolates found a single SNP
172 resulting in a reversion of a nonsense mutation to a functional amino acid codon in the
173 gene *filB* within the *fil* operon; a putative type 3 filamentous fimbriae. This reversion
174 was obscured in the Snippy analysis, as one isolate (MS14422) was heterozygous at

175 this position, resulting in it being masked from the core SNP analysis. This reversion
176 corresponded to the latter half of the outbreak, including all CR-*Ab* isolates taken after
177 the 4th of July 2016 (with the exception of MS14413 [6/7/16], MS14438 [12/9/16] and
178 SS17M5036 [17/5/17]) (Supplementary Figure 4). As stated, MS14422 appeared to
179 have both alleles at this position and represents either (i) a transitioning population
180 reverting from a functional codon back to a stop codon, or (ii) a mixed population of
181 both allele types. Due to the unusual nature of this nonsense mutation reversion, we
182 downloaded all available complete publicly available *A. baumannii* strains from NCBI
183 (accessed 15-11-2018) and inspected the *filB* region. This analysis showed that there
184 were multiple *A. baumannii* strains with disrupted *filB* genes, caused not only by
185 nonsense mutations, but also interruption by insertion sequences and frameshift
186 mutations (Supplementary Figure 4). Many of the publicly available strains also
187 appeared to have functional *filB* genes, with reversion from a stop codon to a functional
188 gene possible based on the phylogeny. While not much is known about this fimbriae in
189 *A. baumannii*, several of the genes within this operon were shown to be down-regulated
190 in community settings[12], suggesting that it may not be required in biofilms or stable
191 bacterial populations. It is possible that it increases survivability or transmission
192 throughout the environment, however further work is required to determine the
193 phenotypic qualities of this mutation.

194

195 Conversely, and IS*Aba125* element was identified upstream of the *csu* operon in the
196 complete genome of MS14413. The *csu* operon is a well-characterized chaperone-usher
197 pili assembly system involved in biofilm formation[13]. It is possible that this insertion
198 sequence (IS) is driving enhanced expression of this operon, promoting adhesion to
199 abiotic surfaces and encouraging biofilm formation. Unfortunately, due to the nature of

200 the draft *de novo* assemblies derived from short-read sequencing, we were unable to
201 fully characterise this insertion in all isolates. Further work is required to completely
202 characterise the position of this IS in all outbreak isolates.

203

204 No transmission of *P. aeruginosa* or *S. marcescens* from the index patient was
205 observed

206 *P. aeruginosa* isolates from the index patient were found to be ST979 and all carried 5
207 antibiotic resistance genes (*aph(3')-IIb*, *blaOXA-50*, *blaPAO*, *catB7* and *fosA*)
208 (Supplementary Table 2). The final *P. aeruginosa* isolate from the index patient
209 (MS14412) was found to be more resistant to carbapenems, likely due to a nonsense
210 mutation in the outer membrane porin *oprD*, as well as a non-conservative amino acid
211 change in the response regulator *parR*. Initial *S. marcescens* isolates appeared to only
212 carry *aac(6')-Ic*, *blaSRT-2*, *oqxB*, and *qnrE*. However, later acquisition of an IncHI2
213 plasmid in two *S. marcescens* isolates was associated with large number of additional
214 resistance genes, including the ESBL *blaCTX-M-15* (Supplementary Table 3).

215

216

217

218

219

220

221

222

223

224

225 **Supplementary Tables:**

226

227 **Supplementary Table 1:** Primers used to resolve large duplication in CR-Ab isolate MS14413

Name	Sequence	Length	GC	Tm
8076_A1_border1_F	TCCCGGCACTTAACTTACGT	20	50	63.7
8077_A2_wbuB_R	CGGCCAATCACGATCAGATG	20	55	69.2
8078_B1_OXA23_F	TCTGTATTTGCGCGGCTTAG	20	50	65.4
8079_C1_border2_R	TTAGCTCCCCACACTGAG	20	55	63.4

228

229

230 **Supplementary Table 2:** Antibiotic resistance genes in *P. aeruginosa* isolates from the index patient:

231 tick denotes presence

232

	aph(3')-IIb_1	blaOXA-50_1	blaPAO_4	catB7_1	fosA_1
MS14395	✓	✓	✓	✓	✓
MS14399	✓	✓	✓	✓	✓
MS14403	✓	✓	✓	✓	✓
MS14412	✓	✓	✓	✓	✓

233

234

235

236

237

238 **Supplementary Table 3:** Antibiotic resistance genes in *S. marcescens* isolates from the index patient:
 239 tick denotes presence; number denotes % nucleotide coverage (where two numbers separated by a comma
 240 represents a split blast result)

	QnrB1_1	aac(3)-IIa_1	aac(6')-Ic_1	aac(6')Ib-cr_1	aadA1_1	blaCTX-M-15_23	blaOXA-1_1	blaSRT-2_1	blaTEM-1B_1	catA1_1	dfrA14_1	oqxB_1	qnrE_1	strA_4	strB_1	sul2	tet(A)_4
MS8415			✓					✓				✓	✓				
MS14404*	✓		✓	✓	✓	✓	51.74, 19.01	✓	✓	65.91	✓	✓	✓	✓	✓	✓	✓
MS8416*	✓	✓	✓	✓	✓	✓	40.07, 52.23	✓	✓	✓	✓	✓	✓	✓	✓	✓	✓

241 * Contain IncHI2 plasmid

242

243

244 **Supplementary table 4: Positive culture and sequencing results from 2018 environmental sampling**

Sample	Isolation date	Culture result	Sequencing result	# reads total in sample	# reads mapped to MS14413	% reads	# Contigs in <i>de novo</i> assembly
R5666	16/08/2018	ST1050 CR-Ab	No CR-Ab	n/a	n/a	n/a	n/a
R5515	26/07/2018	No CR-Ab	ST1050 CR-Ab	43582216	444810	1.0%	4173
R5510	26/07/2018	No CR-Ab	ST1050 CR-Ab	51421258	3134890	6.1%	8125
R5863	02/10/2018	No CR-Ab	ST1050 CR-Ab	41402234	369031	0.9%	10011
R5864	02/10/2018	ST1050 CR-Ab	ST1050 CR-Ab	38635392	2634975	6.8%	1326

245

246

247

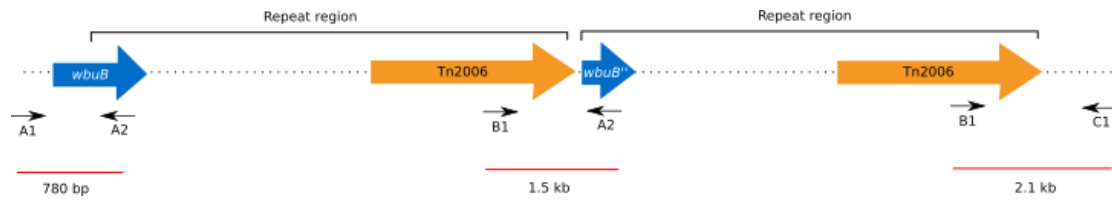
248

249

250

251 **Supplementary Figures:**

252



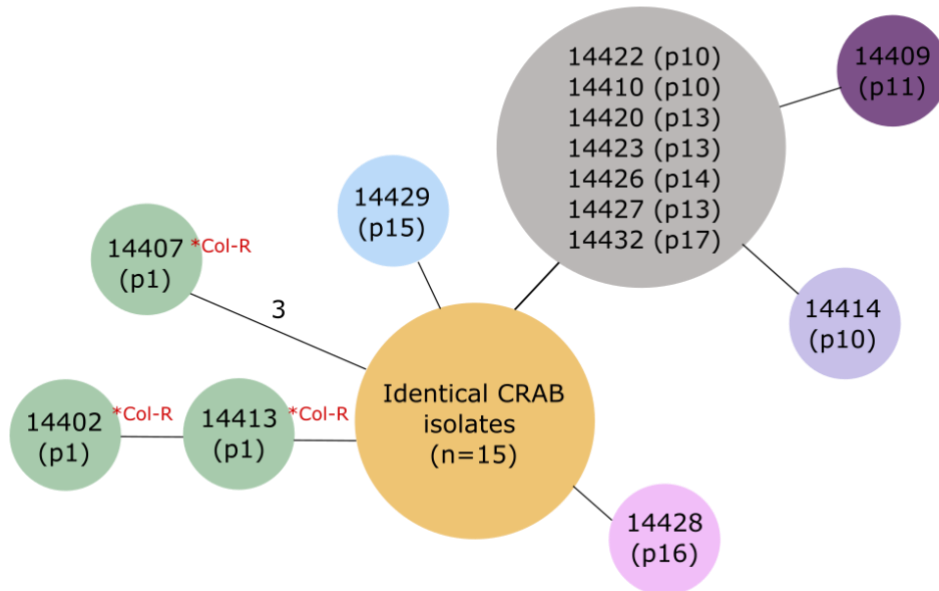
253

254 **Supplementary Figure 1:** Primer binding regions to resolve large duplication in CR-Ab isolate

255 MS14413 (not to scale)

256

257



258

259 **Supplementary Figure 2: Relationship matrix of outbreak ST1050 CR-Ab isolates from 2016:**

260 isolates within the same circle are identical at the core SNP level. Black lines indicate 1 SNP difference,

261 except where stated otherwise. Patient numbers denoted with "p" and the corresponding number. "Col-

262 R" denotes isolates with colistin resistant SNPs. The yellow circle includes 15 isolates identical at the

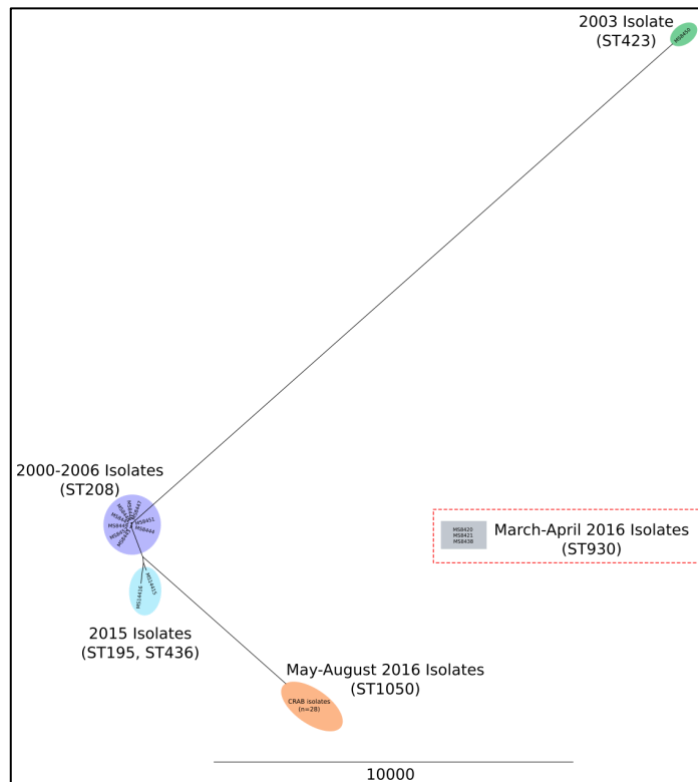
263 core SNP level from patients 1-9 and 12: MS14431, MS14430, MS14397 (p1); MS8410, MS8412 (p2);

264 MS8422 (p3); MS8413 (p4); MS8419 (p5); MS8436, MS8440 (p6); MS8442 (p7) MS8441 (p8),

265 MS14388 (p9) and MS14421 (p12).

266 .

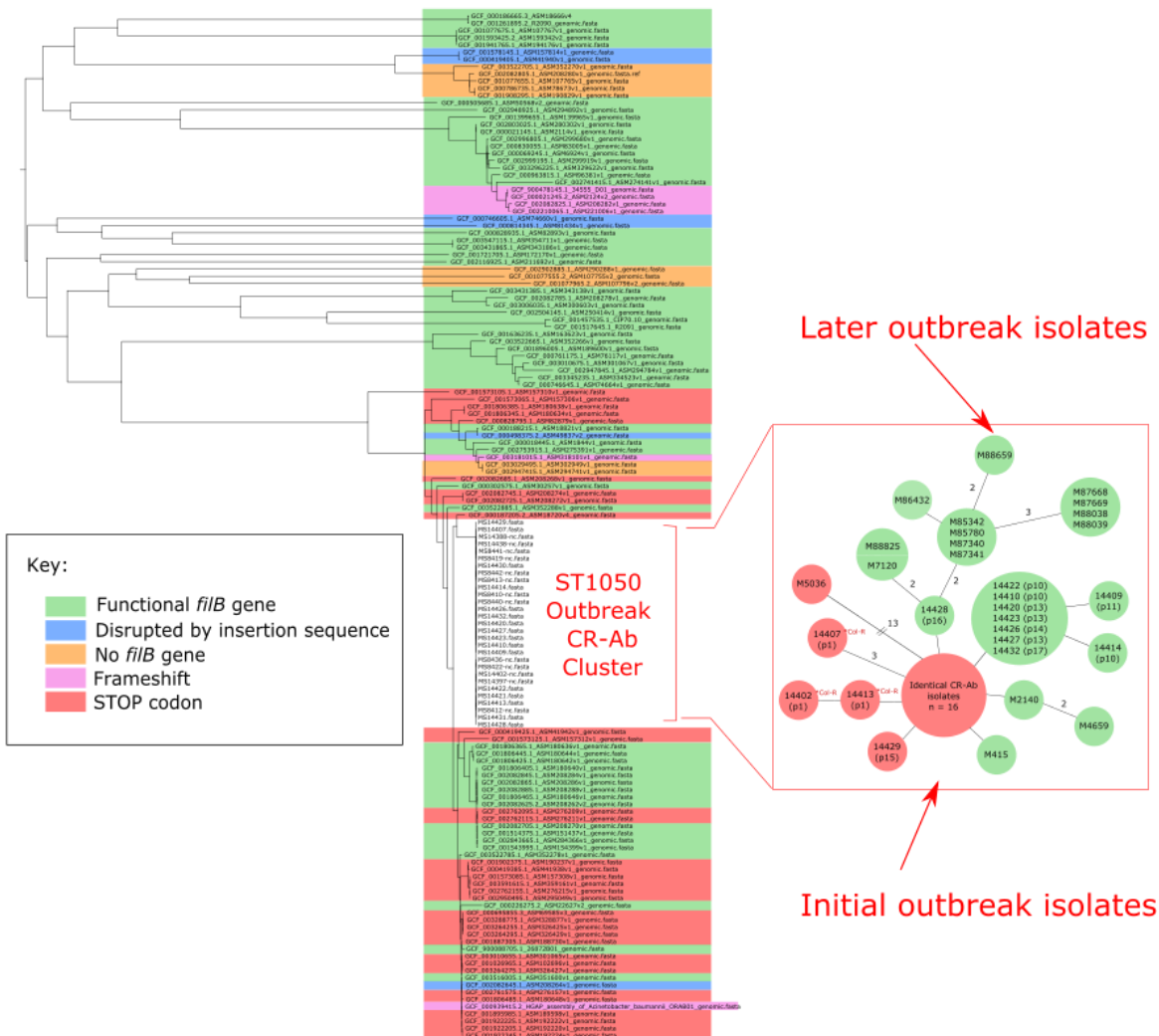
267



268

269

270 **Supplementary Figure 3: Comparison of outbreak ST1050 CR-Ab isolates to CR-Ab previously**
 271 **isolated from the same hospital between 2000 to early 2016:** Tree was created with Parsnp v1.2
 272 (default settings) using the draft *de novo* assemblies for the ST1050 CR-Ab as well as 17 historical CR-
 273 Ab from the same hospital. For clarity, the node representing the March-April 2016 isolates (ST930) has
 274 been removed from tree as its long branch length obscured the other nodes (see red box inset).



275

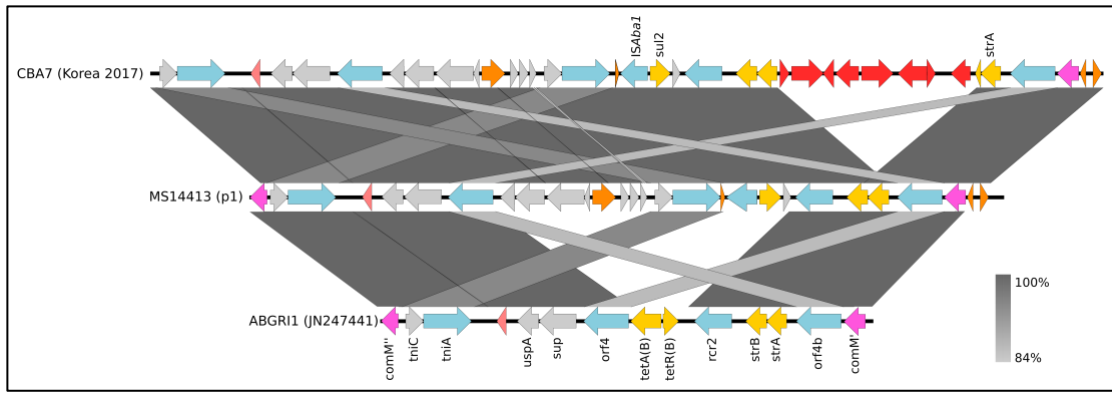
276 **Supplementary Figure 4: Analysis of nonsense mutation reversion in ST1050 outbreak CR-Ab and**
 277 **complete publicly available *A. baumannii* (from NCBI): Tree built using Parsnp v1.2 (under default**
 278 **settings) with 113 complete *A. baumannii* and the initial outbreak ST1050 CR-Ab genomes (mid-point**
 279 **rooted). Taxa are coloured according to *filB* genotype (refer to key). Inset box shows relationship matrix**
 280 **from Figure 3 (in main text) with nodes coloured according to *filB* genotype. SS17M414 (isolated**
 281 **3/1/2017) also has a functional *filB* gene, however, is not displayed in the relationship matrix as it clusters**
 282 **in the large group of 16 identical isolates.**

283

284

285

286



287

288 **Supplementary Figure 5: Novel AbGRI1 resistance island in MS14413.** BLASTn comparison

289 shown in grey.

290

291

292

293

294

295

296

297

298

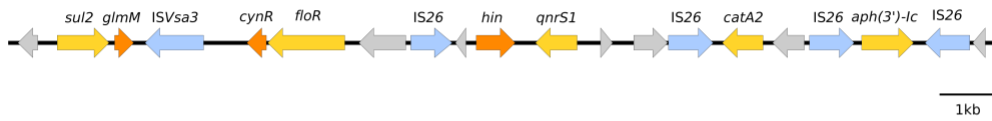
299

300

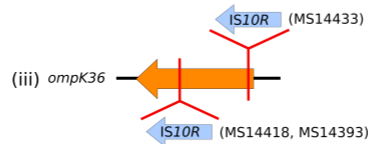
301

[A] *K. pneumoniae* resistance genes

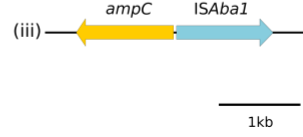
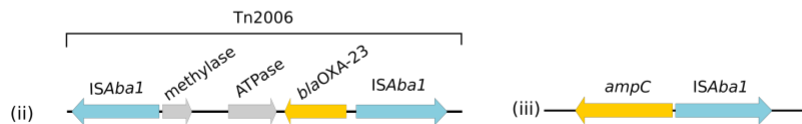
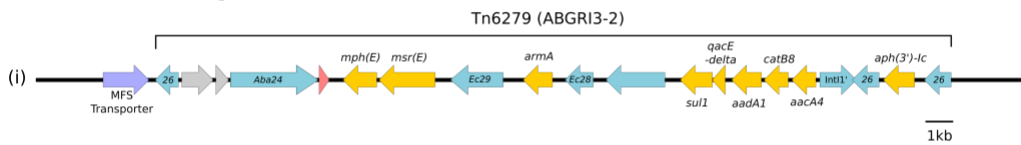
(i) AB resistance region 1 (15.6 kb):



(ii) AB resistance region 2 (23.8 kb):



[B] CR-Ab resistance genes



302

303 **Supplementary Figure 6: Resistance regions found in *K. pneumoniae* [A] and CR-Ab [B] isolates:**

304 arrows represent CDS. Colours represent resistance genes (yellow), regulatory/efflux genes (orange),

305 mobile elements (blue) and hypothetical genes (grey). [A] two resistance regions were found in all *K.*

306 *pneumoniae* isolates, located on an IncA/C plasmid. [B] CR-Ab isolates were found to have three main

307 mechanisms of resistance: (i) a large transposon Tn6279 (ABGRI3-2), (ii) a smaller transposon (Tn2006)

308 and (iii) an *ISAba1* element upstream of the intrinsic *ampC* gene.

309

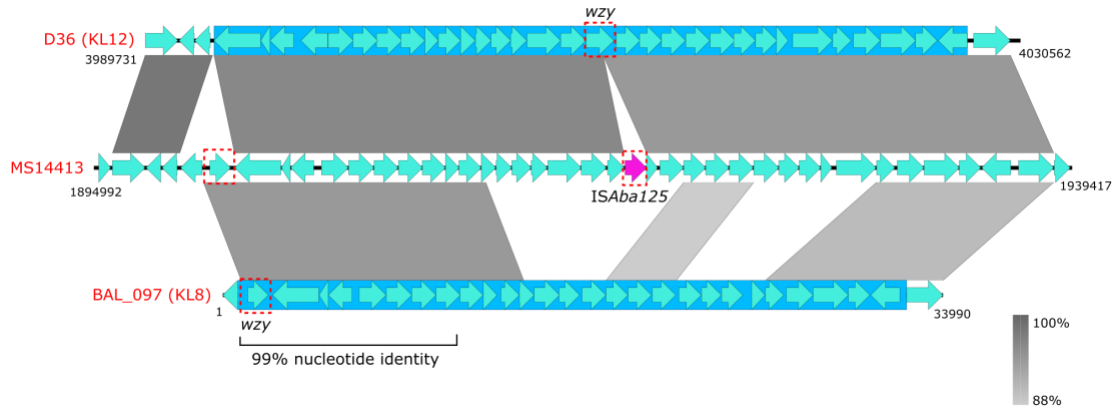
310

311

312

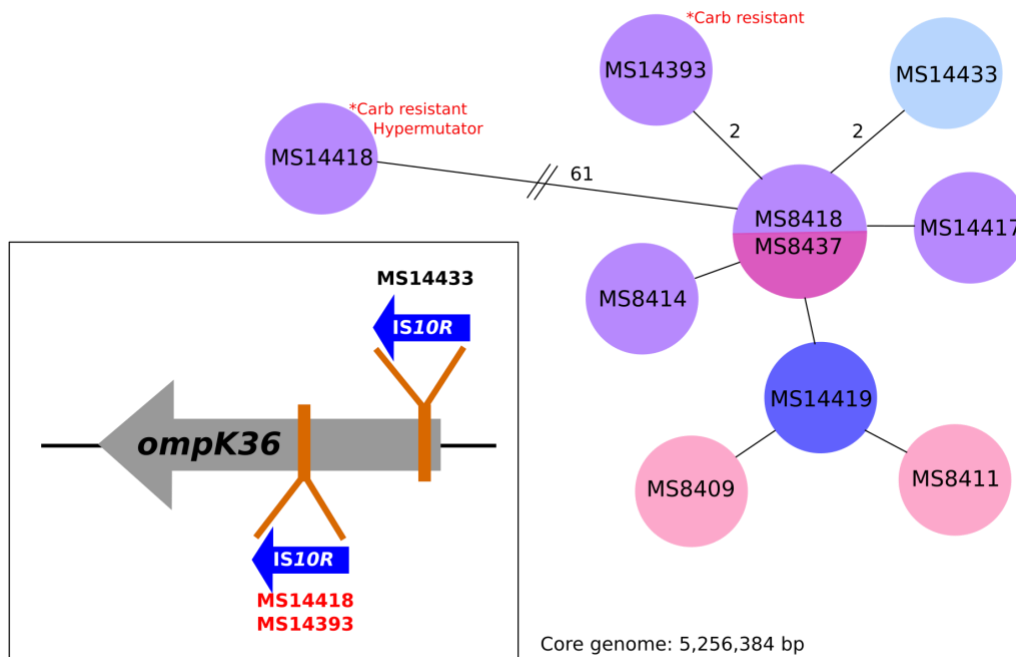
313

314



315

316 **Supplementary Figure 7: wzy gene positions in capsule (K) region:** Light blue arrows represent CDS
 317 regions. Dark blue box represents capsule region. Outbreak CR-Ab isolate MS14413 was found to have
 318 a 97% nucleotide similarity to the KL12 capsule (K) locus found in the GC1 *A. baumannii* strain D36
 319 (GenBank:NZ_CP012952.1) except for an ISAbal25 insertion sequence in the wzy gene. Further
 320 comparison found a second wzy gene in the same position as in the *A. baumannii* strain BAL_097
 321 (GenBank: KX712116).



322

323 **Supplementary Figure 8: Relationship matrix of ST515 *Klebsiella pneumoniae* isolates during 2016**
 324 **outbreak and disruption of *ompK36* outer membrane porin by *IS10R*:** coloured circles correspond
 325 to patient. Branches represent one SNP difference unless otherwise stated.

326

MutH:

```

1  MPAIAPLASPPQSQEQLLAQARQLAGYSLGELAALAGIPIPRDLKRDKGWTGILLELWLG  60
   MPAIAPLASPPQSQEQLLAQARQLAGYSLGELA  GIPIPRDLKRDKGWTGILLELWLG
   MPAIAPLASPPQSQEQLLAQARQLAGYSLGELA--GIPIPRDLKRDKGWTGILLELWLG

61  ASAGSKPEQDFAALGVELKTIPIDSRGRPLETTFVCVAPLTGNSGVTWESSHVRHKLQRV  120
   ASAGSKPEQDFAALGVELKTIPIDSRGRPLETTFVCVAPLTGNSGVTWESSHVRHKLQRV
   ASAGSKPEQDFAALGVELKTIPIDSRGRPLETTFVCVAPLTGNSGVTWESSHVRHKLQRV

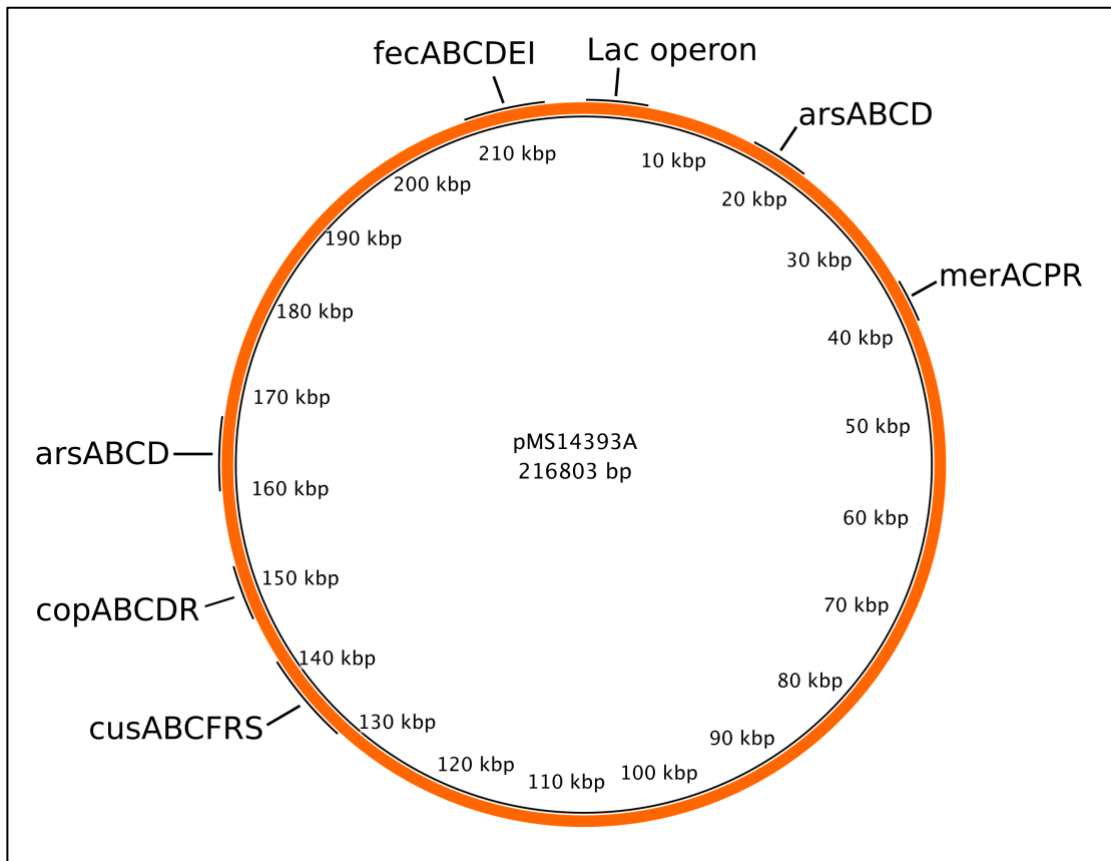
121 LWIPVEGERTIPLAARRVGAPLLWSPDEDEERRLRMDWEELMDLIVLGEVERITARHGEV  180
   LWIPVEGERTIPLAARRVGAPLLWSPDEDEERRLRMDWEELMDLIVLGEVERITARHGEV
   LWIPVEGERTIPLAARRVGAPLLWSPDEDEERRLRMDWEELMDLIVLGEVERITARHGEV

181 LQLRPKAANSKALTEAIGARGETILTLPGRGFYLKKNFTAALLARHFLLQHD  231
   LQLRPKAANSKALTEAIGARGETILTLPGRGFYLKKNFTAALLARHFLLQHD
   LQLRPKAANSKALTEAIGARGETILTLPGRGFYLKKNFTAALLARHFLLQHD
  
```

327

328 **Supplementary Figure 9: Deletion of three amino acids from MutH protein in MS14418**

329

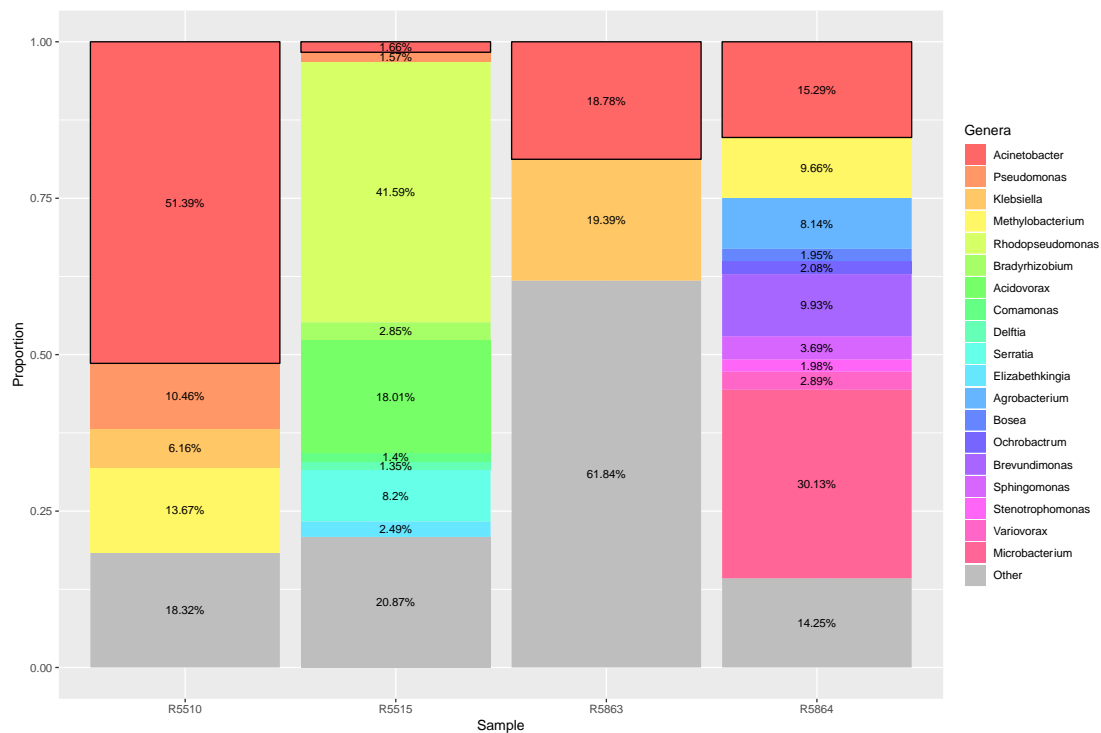


330

331 **Supplementary figure 10: PacBio assembly of IncF plasmid carried by *K. pneumoniae* isolate**

332 **MS14393**

333



335

336

337 **Supplementary Figure 11: Metagenomic read abundance profiles of environmental surveillance**338 **samples.** Each column shows the relative abundance of paired-end reads for each environmental sample

339 that were classified at a bacterial genus level by comparing against a database of bacterial genomes from

340 RefSeq. Only bacterial genera with a relative abundance >0.5% are shown as distinct. Genera with an

341 abundance of <0.5% are grouped together as “Other” (grey). Black boxes outlined in black represent

342 abundance of “Acinetobacter”.

343

344

345

346

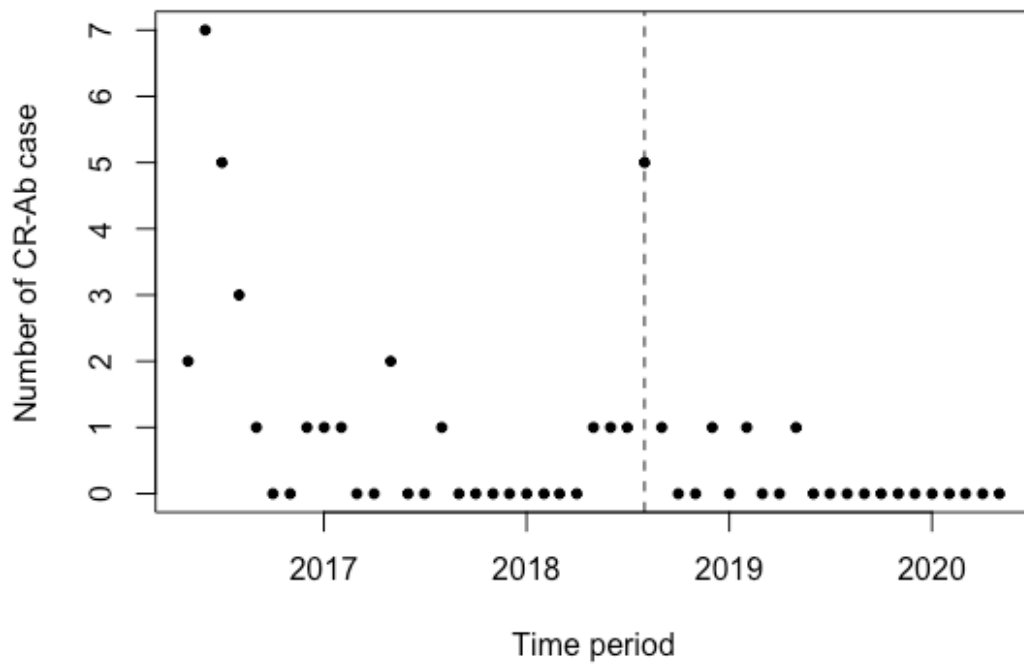
347

348

349

350

Scatterplot of CR-Ab cases from May 2016 to May 2020



351

352 **Supplementary Figure 12: Incidence of ST1050 CR-Ab cases from the time of the initial outbreak**
353 **until May 2020.**

354

355

356

357

358

359

360

361

362

363

364

365

366 References:

- 367 1. Inouye M, Dashnow H, Raven LA, Schultz MB, Pope BJ, Tomita T, Zobel J,
368 Holt KE: **SRST2: Rapid genomic surveillance for public health and**
369 **hospital microbiology labs.** *Genome Med* 2014, **6**(11):90.
- 370 2. Gupta SK, Padmanabhan BR, Diene SM, Lopez-Rojas R, Kempf M,
371 Landraud L, Rolain JM: **ARG-ANNOT, a new bioinformatic tool to**
372 **discover antibiotic resistance genes in bacterial genomes.** *Antimicrob*
373 *Agents Chemother* 2014, **58**(1):212-220.
- 374 3. Bartual SG, Seifert H, Hippler C, Luzon MA, Wisplinghoff H, Rodriguez-
375 Valera F: **Development of a multilocus sequence typing scheme for**
376 **characterization of clinical isolates of Acinetobacter baumannii.** *J Clin*
377 *Microbiol* 2005, **43**(9):4382-4390.
- 378 4. Compain F, Poisson A, Le Hello S, Branger C, Weill FX, Arlet G, Decre D:
379 **Targeting relaxase genes for classification of the predominant**
380 **plasmids in Enterobacteriaceae.** *Int J Med Microbiol* 2014, **304**(3-
381 4):236-242.
- 382 5. Koren S, Walenz BP, Berlin K, Miller JR, Bergman NH, Phillippy AM: **Canu:**
383 **scalable and accurate long-read assembly via adaptive k-mer**
384 **weighting and repeat separation.** *Genome Res* 2017, **27**(5):722-736.
- 385 6. Carver T, Harris SR, Berriman M, Parkhill J, McQuillan JA: **Artemis: an**
386 **integrated platform for visualization and analysis of high-**
387 **throughput sequence-based experimental data.** *Bioinformatics* 2012,
388 **28**(4):464-469.
- 389 7. Walker BJ, Abeel T, Shea T, Priest M, Abouelliel A, Sakthikumar S, Cuomo
390 CA, Zeng Q, Wortman J, Young SK *et al*: **Pilon: an integrated tool for**
391 **comprehensive microbial variant detection and genome assembly**
392 **improvement.** *PLoS One* 2014, **9**(11):e112963.
- 393 8. Li H, Durbin R: **Fast and accurate short read alignment with Burrows-**
394 **Wheeler transform.** *Bioinformatics* 2009, **25**(14):1754-1760.
- 395 9. Seemann T: **Prokka: rapid prokaryotic genome annotation.**
396 *Bioinformatics* 2014, **30**(14):2068-2069.
- 397 10. Varani AM, Siguier P, Goubeyre E, Charneau V, Chandler M: **ISSaga is an**
398 **ensemble of web-based methods for high throughput identification**
399 **and semi-automatic annotation of insertion sequences in**
400 **prokaryotic genomes.** *Genome Biol* 2011, **12**(3):R30.
- 401 11. Chaisson MJ, Tesler G: **Mapping single molecule sequencing reads**
402 **using basic local alignment with successive refinement (BLASR):**
403 **application and theory.** *BMC Bioinformatics* 2012, **13**:238.
- 404 12. Miller DP, Wang Q, Weinberg A, Lamont RJ: **Transcriptome analysis of**
405 **Porphyromonas gingivalis and Acinetobacter baumannii in**
406 **polymicrobial communities.** *Mol Oral Microbiol* 2018, **33**(5):364-377.
- 407 13. Tomaras AP, Dorsey CW, Edelmann RE, Actis LA: **Attachment to and**
408 **biofilm formation on abiotic surfaces by Acinetobacter baumannii:**
409 **involvement of a novel chaperone-usher pili assembly system.**
410 *Microbiology* 2003, **149**(Pt 12):3473-3484.
- 411