

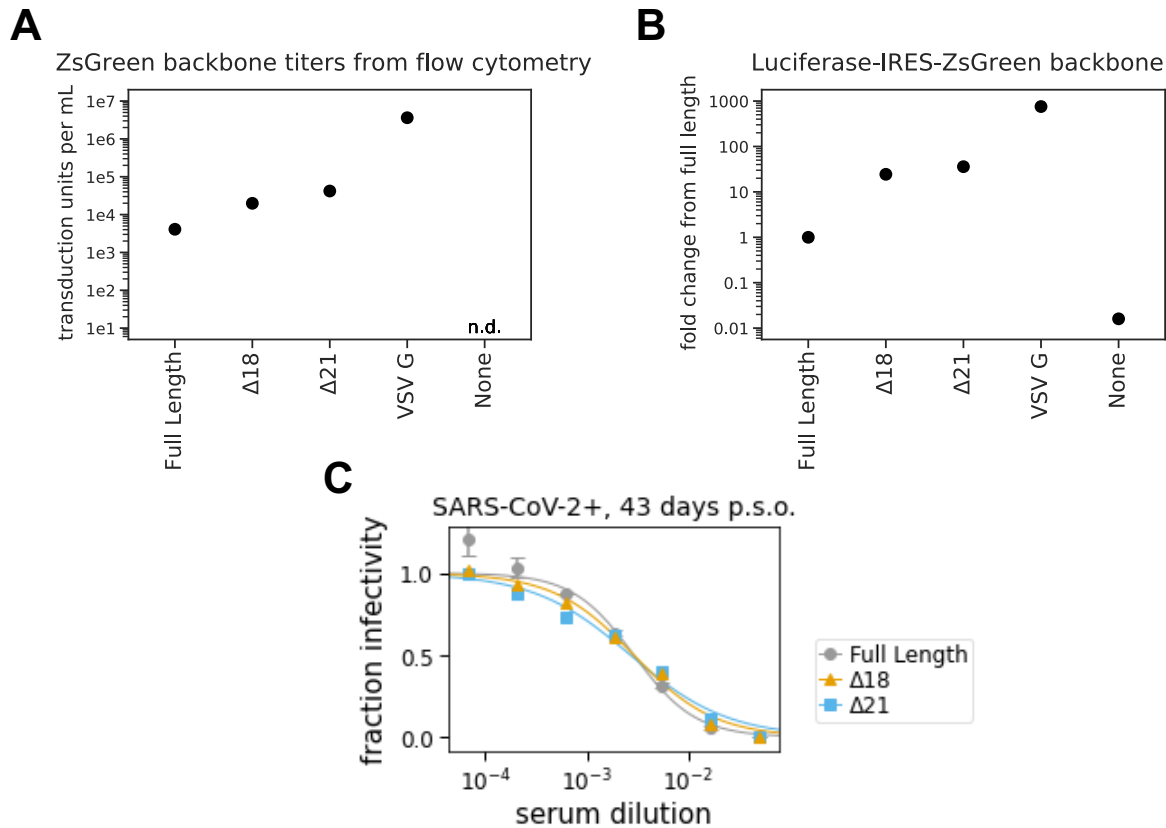
Supplementary Table 1: Additional demographic and medical data.

	Asymptomatic (N=7)	Symptomatic Non-Hospitalized (N=22)	Symptomatic Hospitalized (N=5)	Overall (N=34)
Race				
AIAN	1 (14.3%)	0 (0%)	0 (0%)	1 (2.9%)
White	6 (85.7%)	21 (95.5%)	1 (20.0%)	28 (82.4%)
Asian	0 (0%)	1 (4.5%)	3 (60.0%)	4 (11.8%)
Black	0 (0%)	0 (0%)	0 (0%)	0 (0%)
Multiple Races	0 (0%)	0 (0%)	1 (20.0%)	1 (2.9%)
Hispanic	0 (0%)	1 (4.5%)	0 (0%)	1 (2.9%)
Smoking				
Nonsmoker	6 (85.7%)	20 (90.9%)	5 (100%)	31 (91.4%)
Tobacco use	1 (14.3%)	2 (9.1%)	0 (0%)	3 (8.8 %)
Electronic cigarettes/vapor pen use	0 (0%)	1 (4.5%)	0 (0%)	1 (2.9%)
Comorbidities^a				
No comorbidities	6 (85.7%)	20 (90.9%)	3 (60.0%)	29 (82.9%)
Asthma	0 (0%)	0 (0%)	1 (20.0%)	1 (2.9%)
Hypertension	0 (0%)	2 (9.1%)	1 (20.0%)	3 (8.8%)
Diabetes	0 (0%)	0 (0%)	1 (20.0%)	1 (2.9%)
COPD/emphysema	0 (0%)	0 (0%)	1 (20.0%)	1 (2.9%)
Cancer	1 (14.3%)	0 (0%)	1 (20.0%)	2 (5.9%)
Obstructive Sleep Apnoea	0 (0%)	0 (0%)	1 (20.0%)	1 (2.9%)
Common Symptoms^a				
Chills or shivering	0 (0%)	14 (63.6%)	5 (100%)	19 (55.9%)
Cough	0 (0%)	16 (72.7%)	5 (100%)	21 (61.8%)
Diarrhea	0 (0%)	6 (27.3%)	1 (20.0%)	7 (20.6%)
Ear pain or ear discharge	0 (0%)	1 (4.5%)	0 (0%)	1 (2.9%)
Fatigue	0 (0%)	17 (77.3%)	1 (20.0%)	18 (52.9%)
Feeling feverish	0 (0%)	13 (59.1%)	5 (100%)	18 (52.9%)
Increased trouble	0 (0%)	5 (22.7%)	5 (100%)	10 (29.4%)

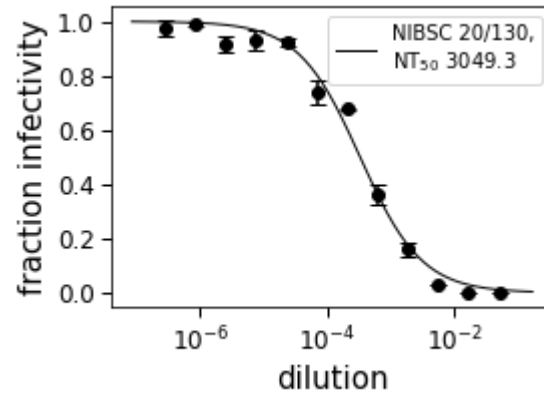
breathing				
Loss of sense of taste or smell	0 (0%)	7 (31.8%)	0 (0%)	7 (20.6%)
Muscle or body aches	0 (0%)	14 (63.6%)	2 (40.0%)	16 (47.1%)
Nausea or vomiting	0 (0%)	3 (13.6%)	2 (40.0%)	5 (14.7%)
Rash	0 (0%)	1 (4.5%)	0 (0%)	1 (2.9%)
Runny or stuffy nose	0 (0%)	13 (59.1%)	1 (20.0%)	14 (41.2%)
Sore throat or itchy/scratchy throat	0 (0%)	10 (45.5%)	0 (0%)	10 (29.4%)
Sweats	0 (0%)	13 (59.1%)	4 (80.0%)	17 (50.0%)
Highest Level of Medical Treatment Received				
Outpatient - Testing Only	6 (85.7%)	14 (63.6%)	0 (0%)	20 (58.8%)
Outpatient - Saw Provider ^b	1 (14.3%)	8 (36.4%)	0 (0%)	9 (26.5%)
Inpatient (General Floor)	0 (0%)	0 (0%)	2 (40.0%)	2 (5.9%)
Inpatient (ICU)	0 (0%)	0 (0%)	3 (60.0%)	3 (8.9%)
Highest Level of Respiratory Support				
None	7 (100%)	22 (100%)	0 (0%)	29 (85.3%)
Nasal Cannula	0 (0%)	0 (0%)	1 (20.0%)	1 (2.9%)
High-flow O2 or non-rebreather	0 (0%)	0 (0%)	1 (20.0%)	1 (2.9%)
Non-invasive ventilation (BiPAP)	0 (0%)	0 (0%)	1 (20.0%)	1 (2.9%)
Mechanical Ventilation	0 (0%)	0 (0%)	2 (40.0%)	2 (5.9%)
Duration of mechanical ventilation (days) (N=2)				
Median [Min, Max]	NA [NA, NA]	NA [NA, NA]	11.5 [6.00, 17.0]	11.5 [6.00, 17.0]

^aCategories not mutually exclusive

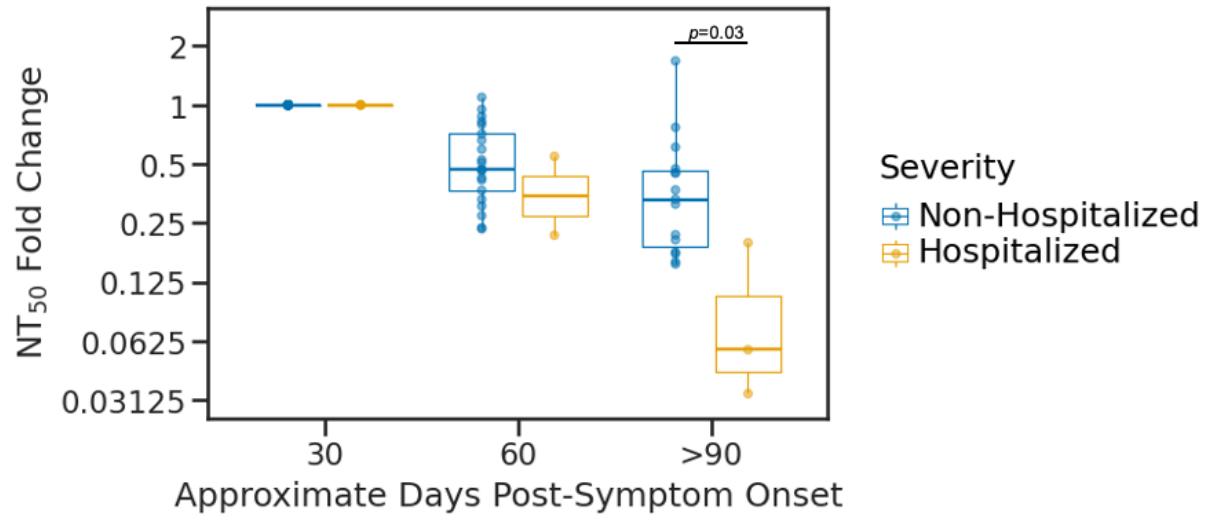
^bIncludes Primary care physician, Urgent care, Emergency Department



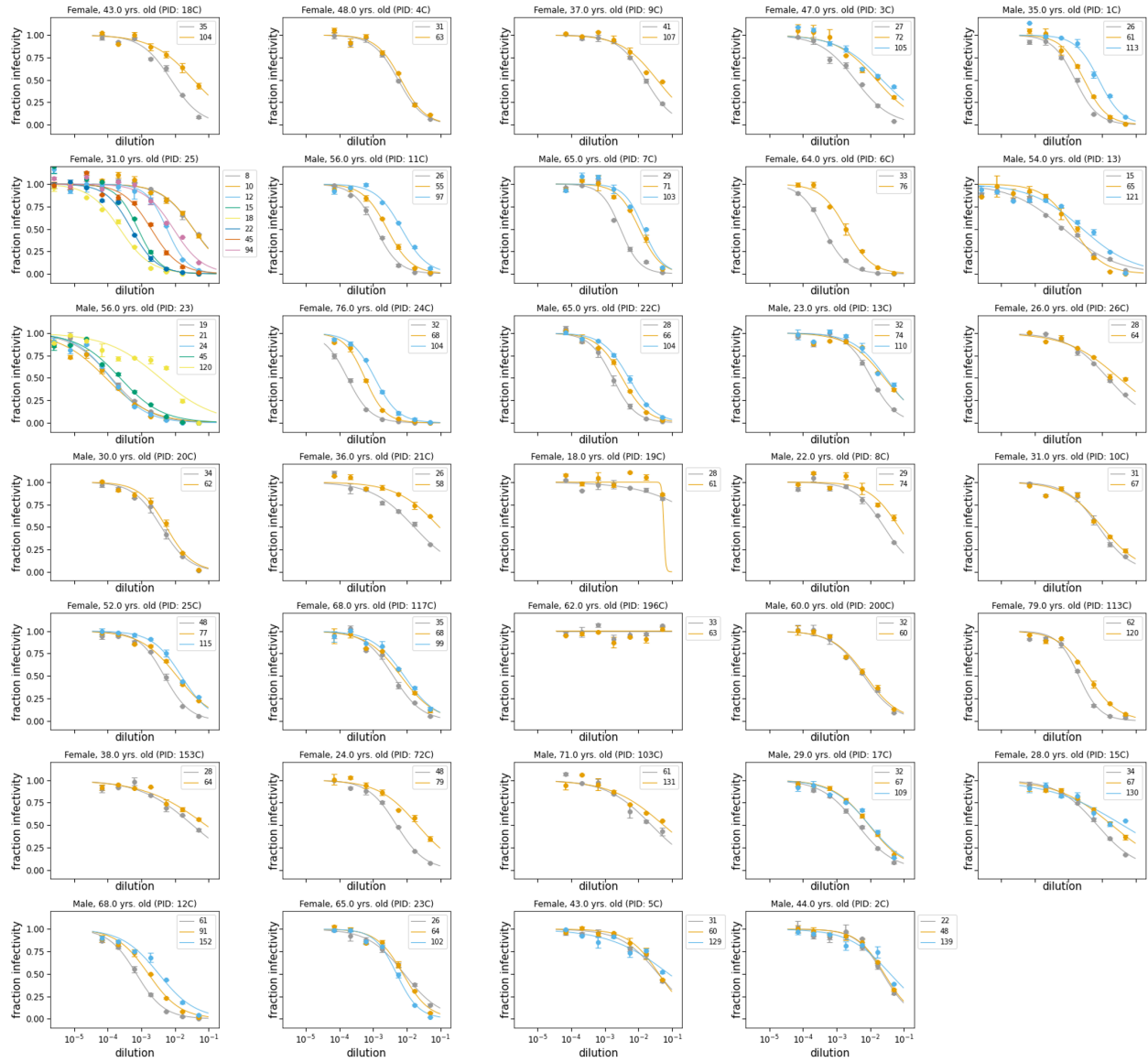
Supplementary Figure 1. Titers of spike-pseudotyped lentiviral particles in 293T-ACE2 cells (BEI Resources, NR-52511) (**A**, **B**) and neutralization of these viruses with serum from an individual previously infected with SARS-CoV-2 (**C**). **A**) Titers of pseudotyped lentivirus with a ZsGreen backbone (BEI, NR-52520) pseudotyped with full-length spike (BEI, NR-52514), spike with either the last 18 ($\Delta 18$) or 21 ($\Delta 21$) amino acids truncated, VSV G, or no viral entry protein. Titers were determined as described in [1]. Positive cells were counted via flow cytometry at 60 h post-infection. The “n.d.” indicates that the titer was not detectable. Data shown are from a single representative example. **B**) Titers of Luciferase-IRES-ZsGreen backbone virus pseudotyped with the specified viral entry proteins. Titers were determined by measuring relative luciferase units (RLUs) per mL and then normalizing to the titers of full-length spike pseudotyped lentivirus. RLUs were determined at 52 h post-infection. The RLUs per mL for the spike-pseudotyped viruses are the average of seven wells of a 1:3 dilution of virus in a total volume of 150 μ L. For the VSV G-pseudotyped virus, RLUs per mL were averaged from six three-fold dilutions starting at a 1:48 dilution in a total volume of 150 μ L. **C**) Neutralization assay with serum collected from an individual previously infected with SARS-CoV-2, 43 days post-symptom onset (p.s.o.). The full-length neutralization curve shows data averaged from duplicate measurements. The $\Delta 18$ and $\Delta 21$ neutralization curves display data from a single replicate. The IC₅₀s for the full-length, $\Delta 18$, and $\Delta 21$ viruses are 1:345, 1:345, and 1:370, respectively. These values all fall within the range of IC₅₀ values we have measured previously for this same serum sample with virus pseudotyped with full-length spike (1:320-1:375). We thank Dr. David Koelle and Dr. Anna Wald at the University of Washington for sharing this sample with us.



Supplementary Figure 2: Neutralization curve for NIBSC standard reference serum (product number 20/130). The NT_{50} for this sample was calculated to be ~3050.



Supplementary Figure 3: Fold change in IC₅₀ at each timepoint colored by disease severity. There was only one asymptomatic individual with a 30-day timepoint and 90-day timepoint, so this individual was included in the “Non-Hospitalized” group. Only individuals with a sample with a reciprocal IC₅₀ of >20 at ~30 days post-symptom onset are included. *P*-value calculated using the Wilcoxon rank-sum test.



Supplementary Figure 4: Neutralization curves for each participant. For each participant, each sample is a different color with the legend specifying how many days post-symptom onset each sample was collected.

Supplementary File 1: Plasmid map for the spike plasmid (HDM_Spikedelta21) used in the pseudotyped lentivirus neutralization assays.

Supplementary File 2: Raw data for each sample. This csv includes the columns: sample, participant ID, Sex, Age, Severity, Days Post-Symptom Onset, IC50, NT50, RBD IgA, RBD IgG, RBD IgM, and Spike IgG. ELISA results are presented as area under the curve (AUC).

References:

1. Crawford KHD, Eguia R, Dingens AS, et al. Protocol and Reagents for Pseudotyping Lentiviral Particles with SARS-CoV-2 Spike Protein for Neutralization Assays. *Viruses* [Internet]. **2020**; 12(5). Available from: <http://dx.doi.org/10.3390/v12050513>