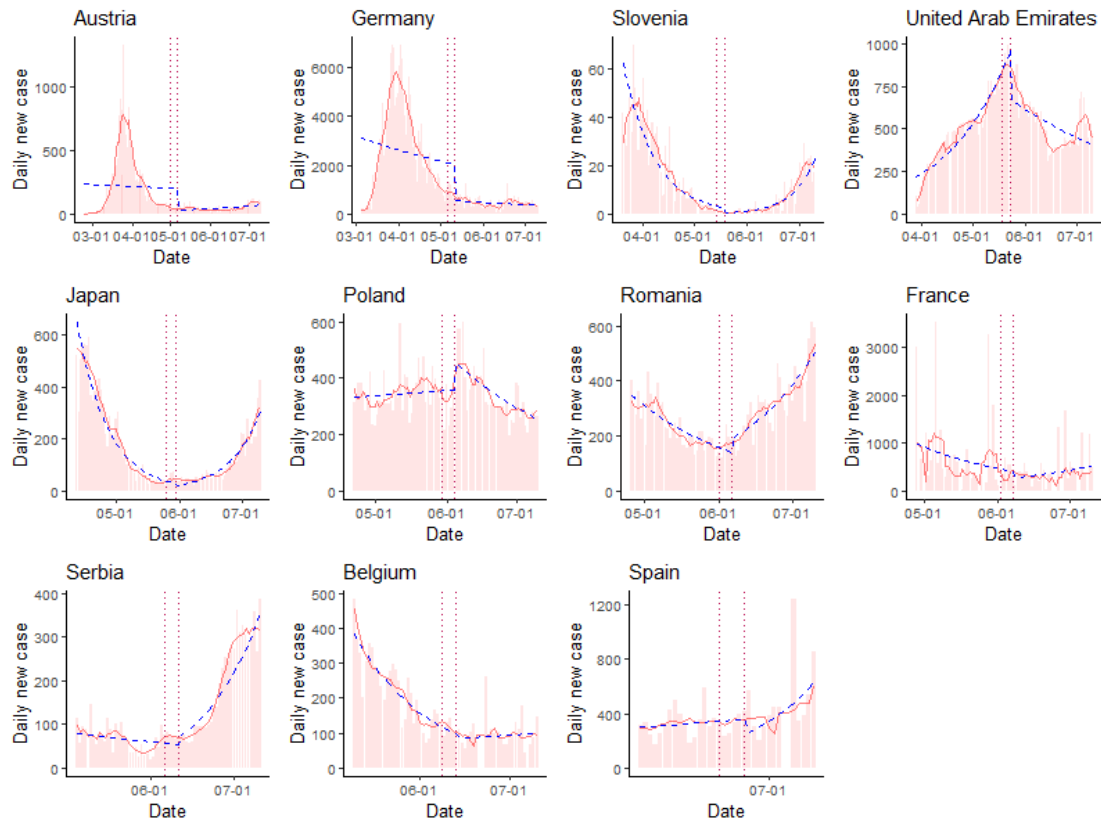
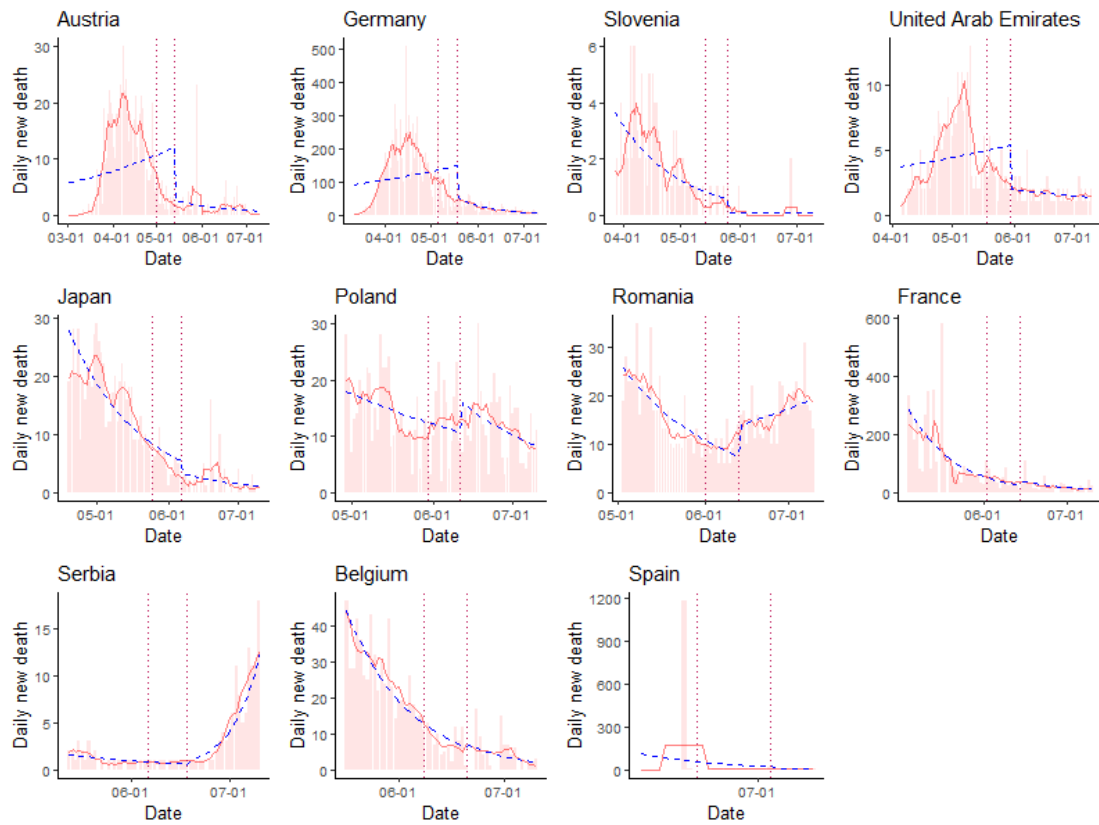


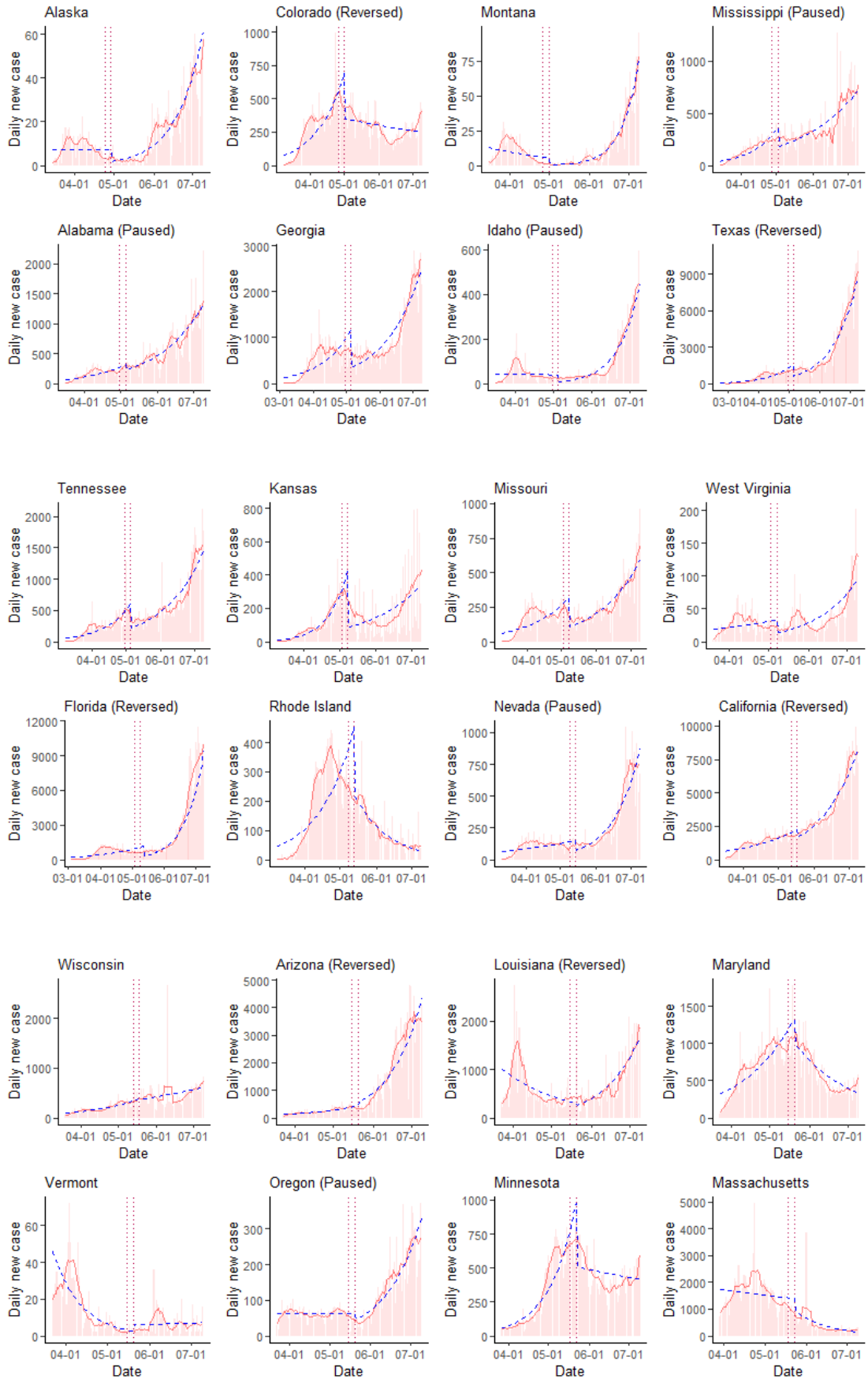
Supplementary materials



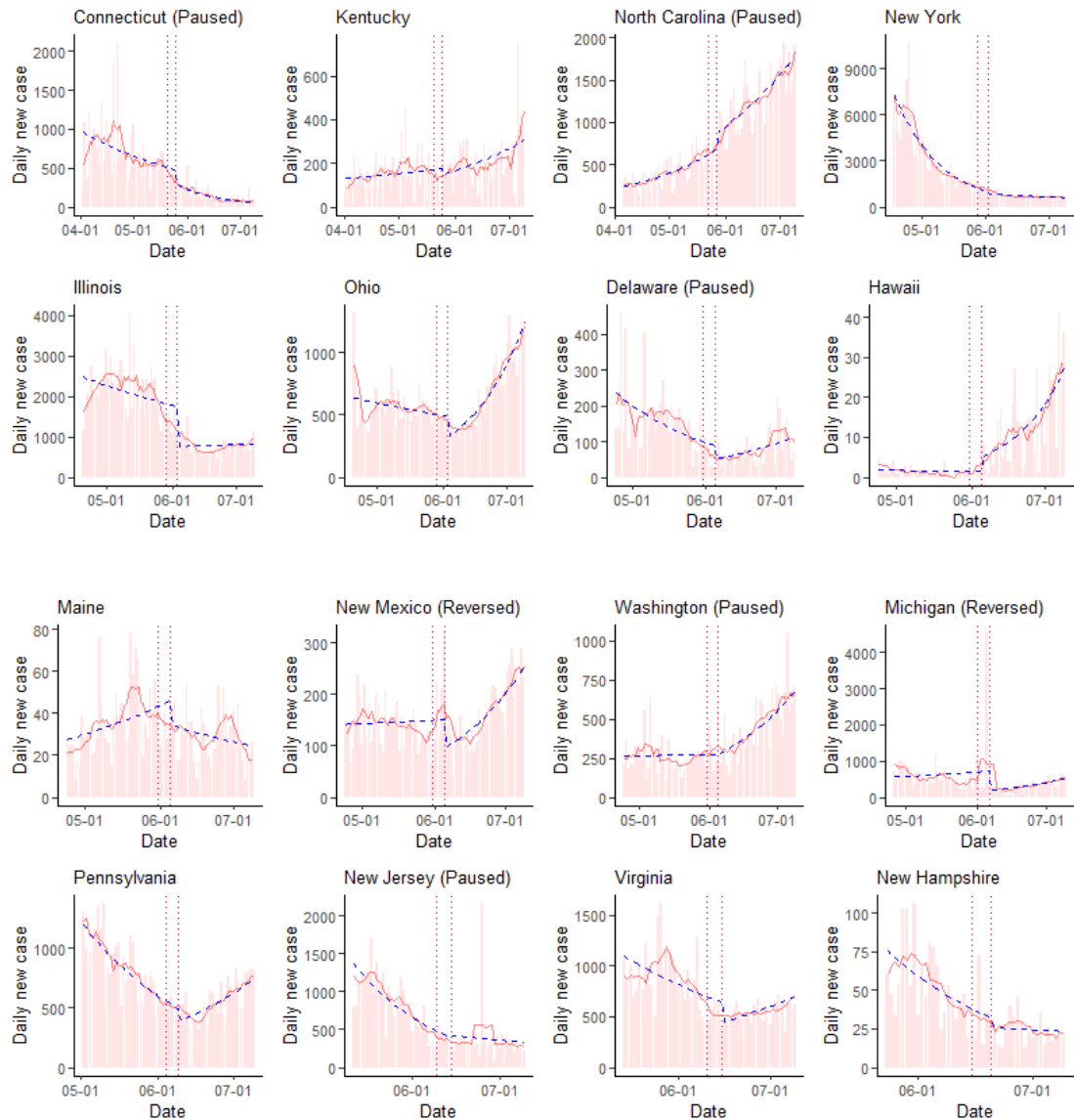
Supplementary Figure 1. Daily new cases vs. date in 11 countries. Countries are ordered by reopening date. Red bars and red solid lines show daily new cases and 7-day average, respectively. Blue dashed line was fitted using Poisson regression before and after reopening. Two dotted vertical red lines indicate reopening date (left) and reopen date plus 5-day incubation period (right).



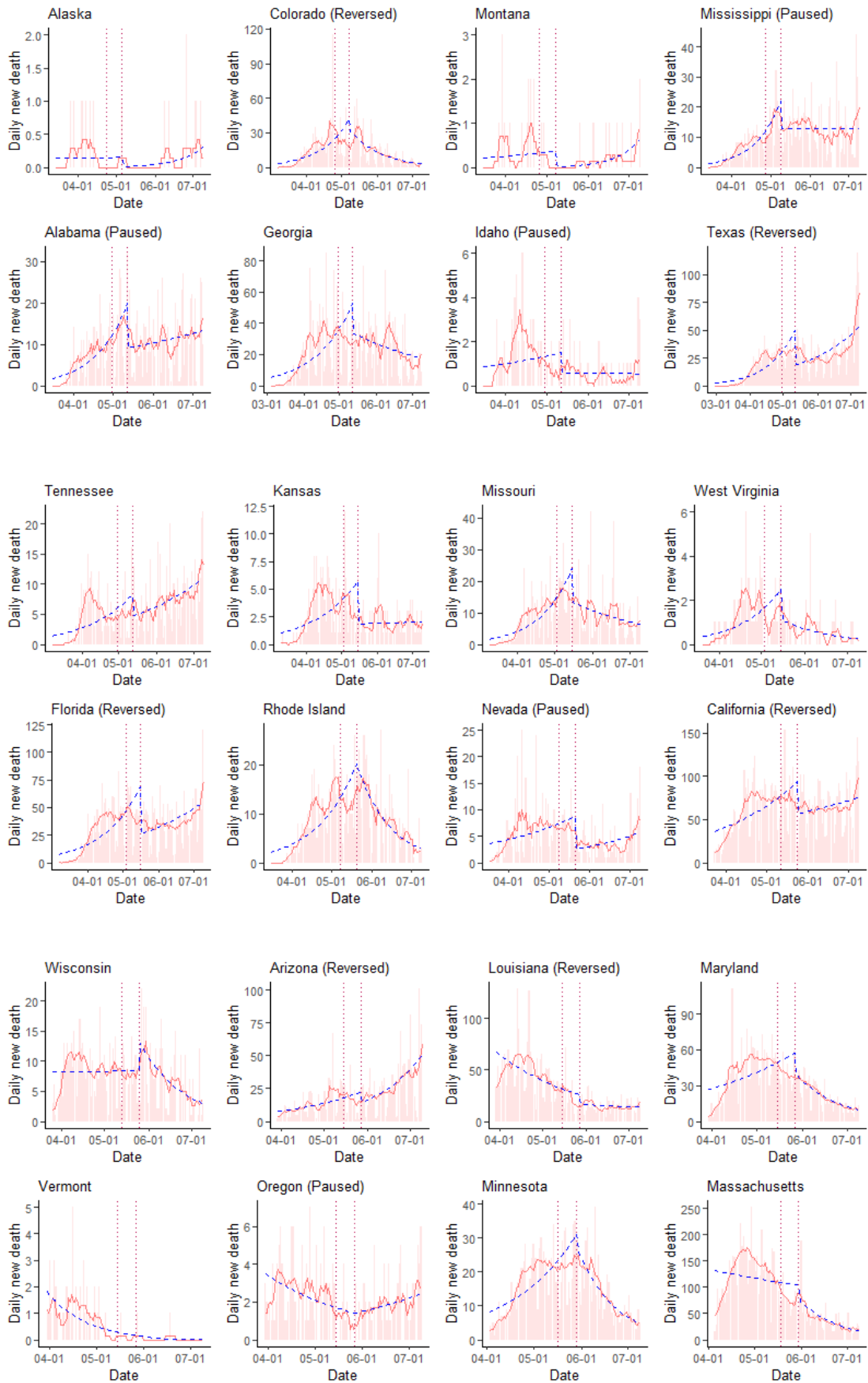
Supplementary Figure 2. Daily new deaths vs. date in 11 countries. Countries are ordered by reopening date. Red bars and red solid lines show daily new cases and 7-day average, respectively. Blue dashed line was fitted using Poisson regression before and after reopening. Two dotted vertical red lines indicate reopening date (left) and reopen date plus 12-day incubation period (right).



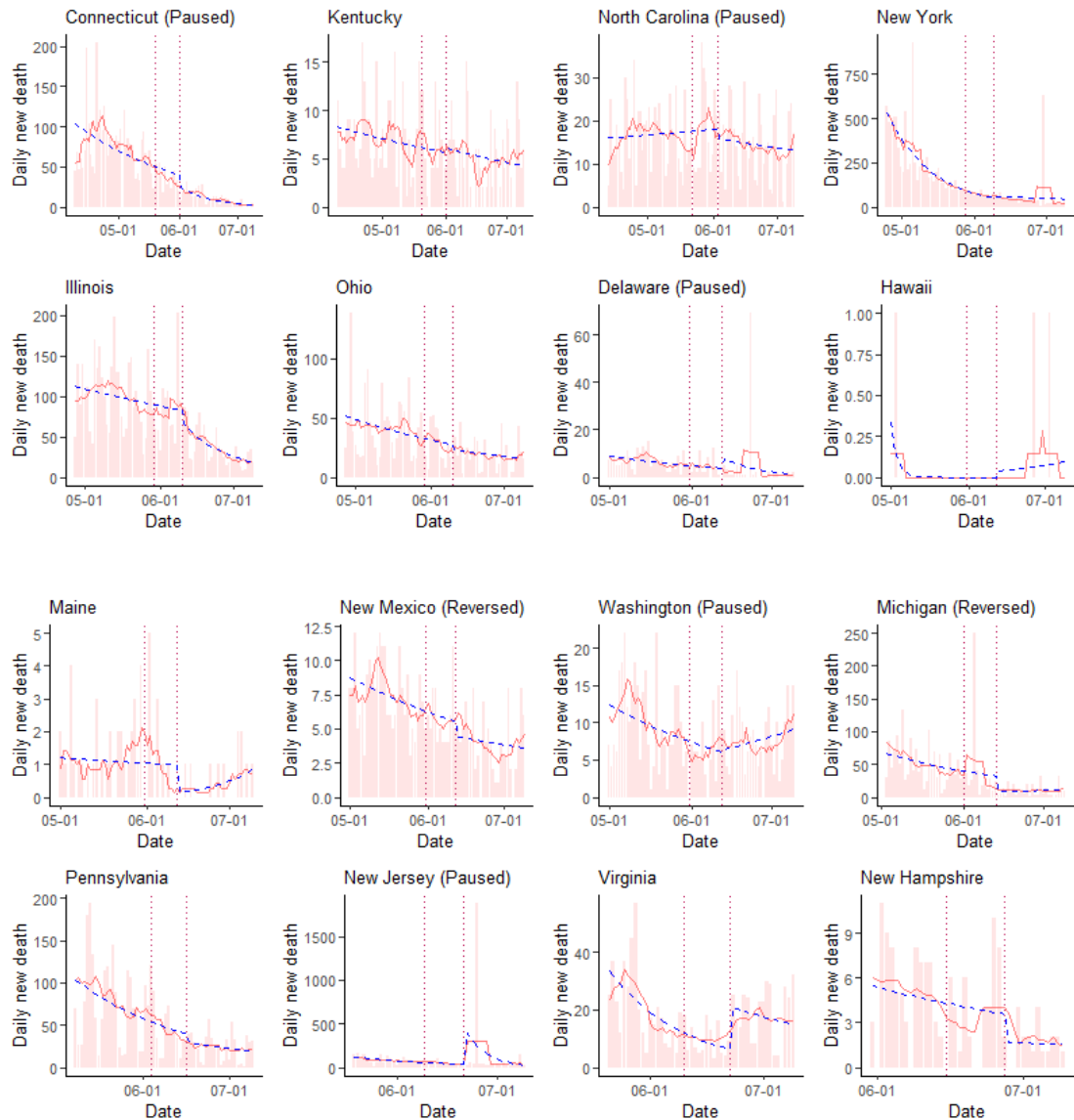
Supplementary Figure 3 continued next page



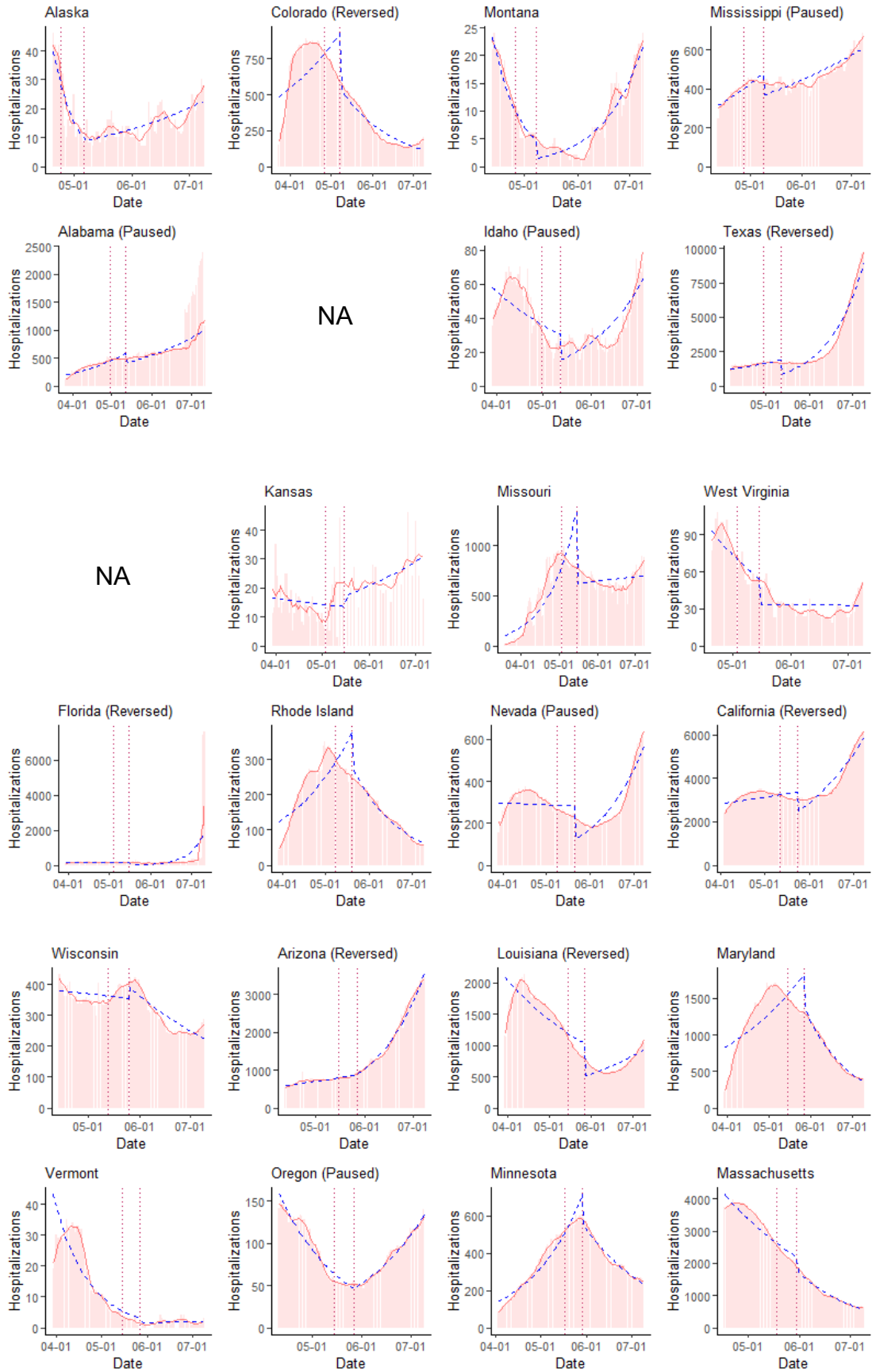
Supplementary Figure 3. Daily new cases vs. date in 40 US states. States are ordered by reopening date. Red bars and red solid lines show daily new cases and 7-day average, respectively. Blue dashed line was fitted using Poisson regression before and after reopening. Two dotted vertical red lines indicate reopening date (left) and reopen date plus 5-day incubation period (right).



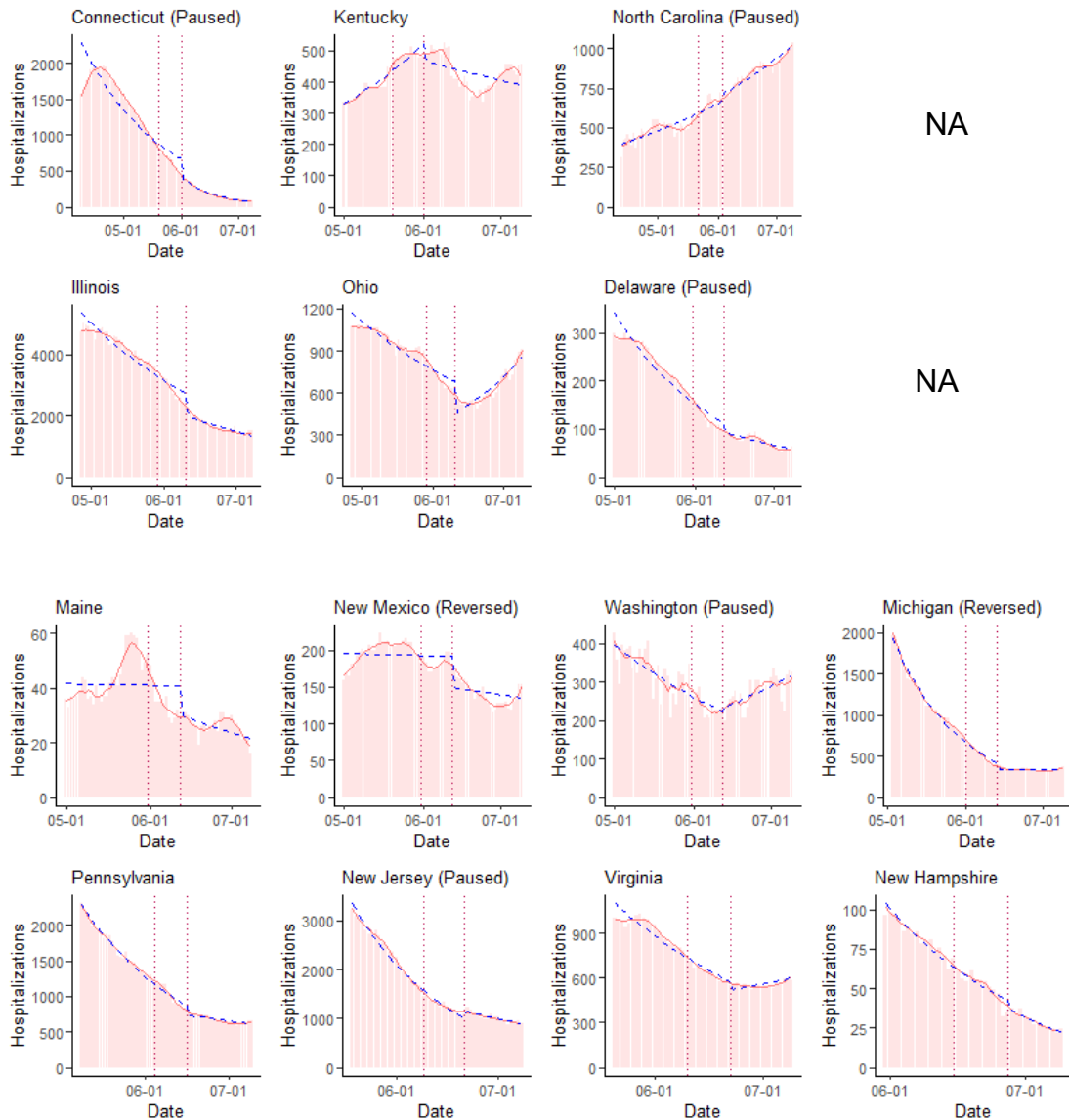
Supplementary Figure 4 continued next page



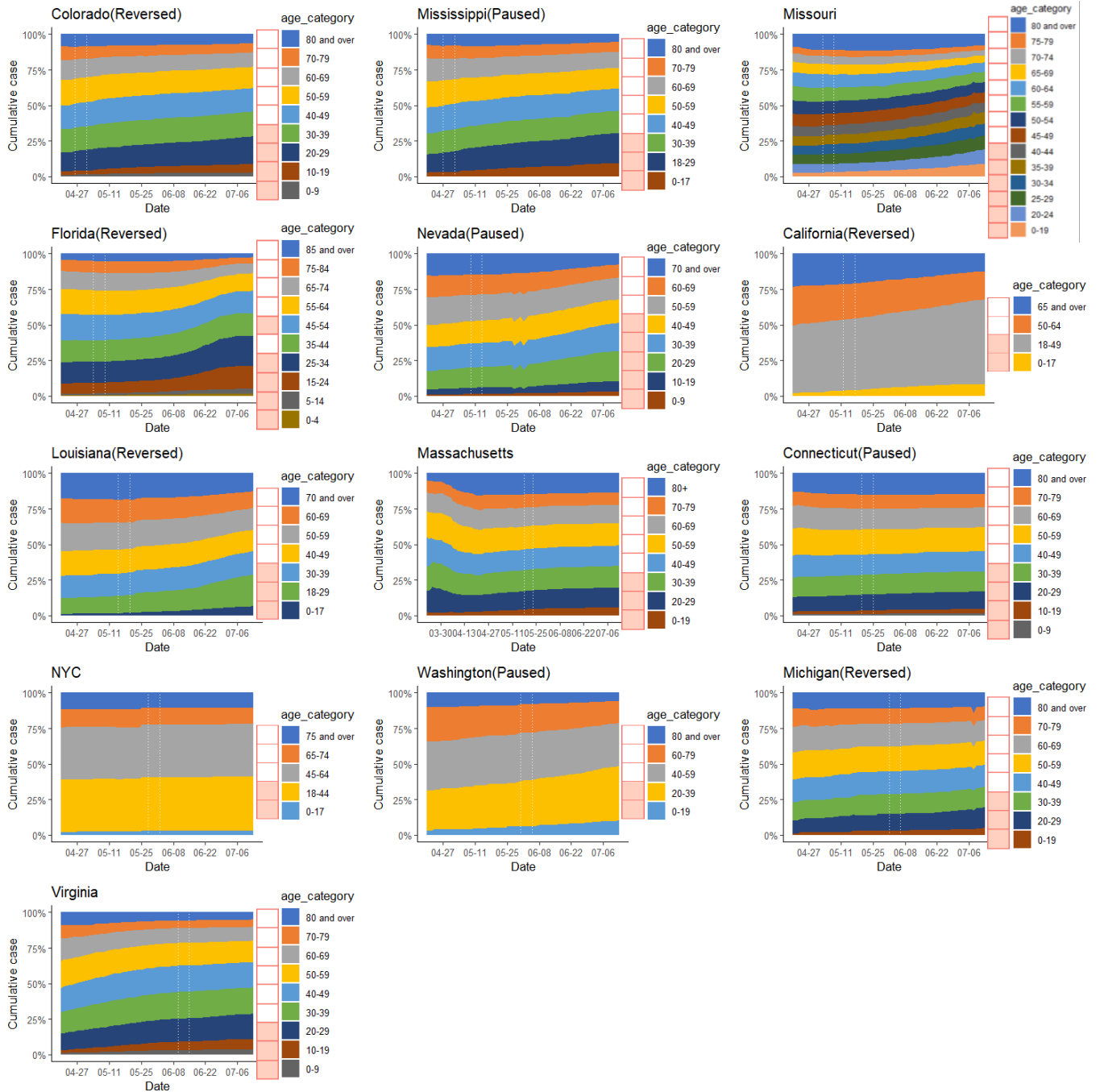
Supplementary Figure 4. Daily new deaths vs. date in 40 US states. States are ordered by reopening date. Red bars and red solid lines show daily new deaths and 7-day average, respectively. Blue dashed line was fitted using Poisson regression before and after reopening. Two dotted vertical red lines indicate reopening date (left) and reopen date plus 12-day incubation period (right).



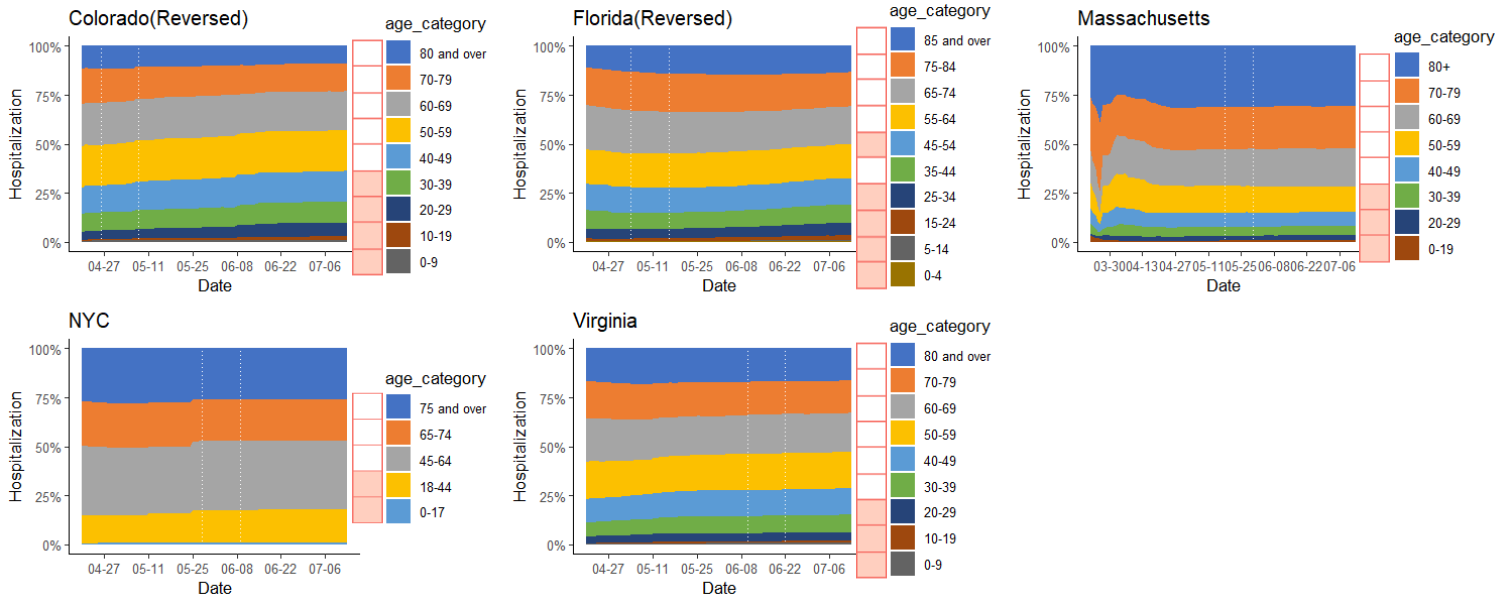
Supplementary Figure 5 continued next page



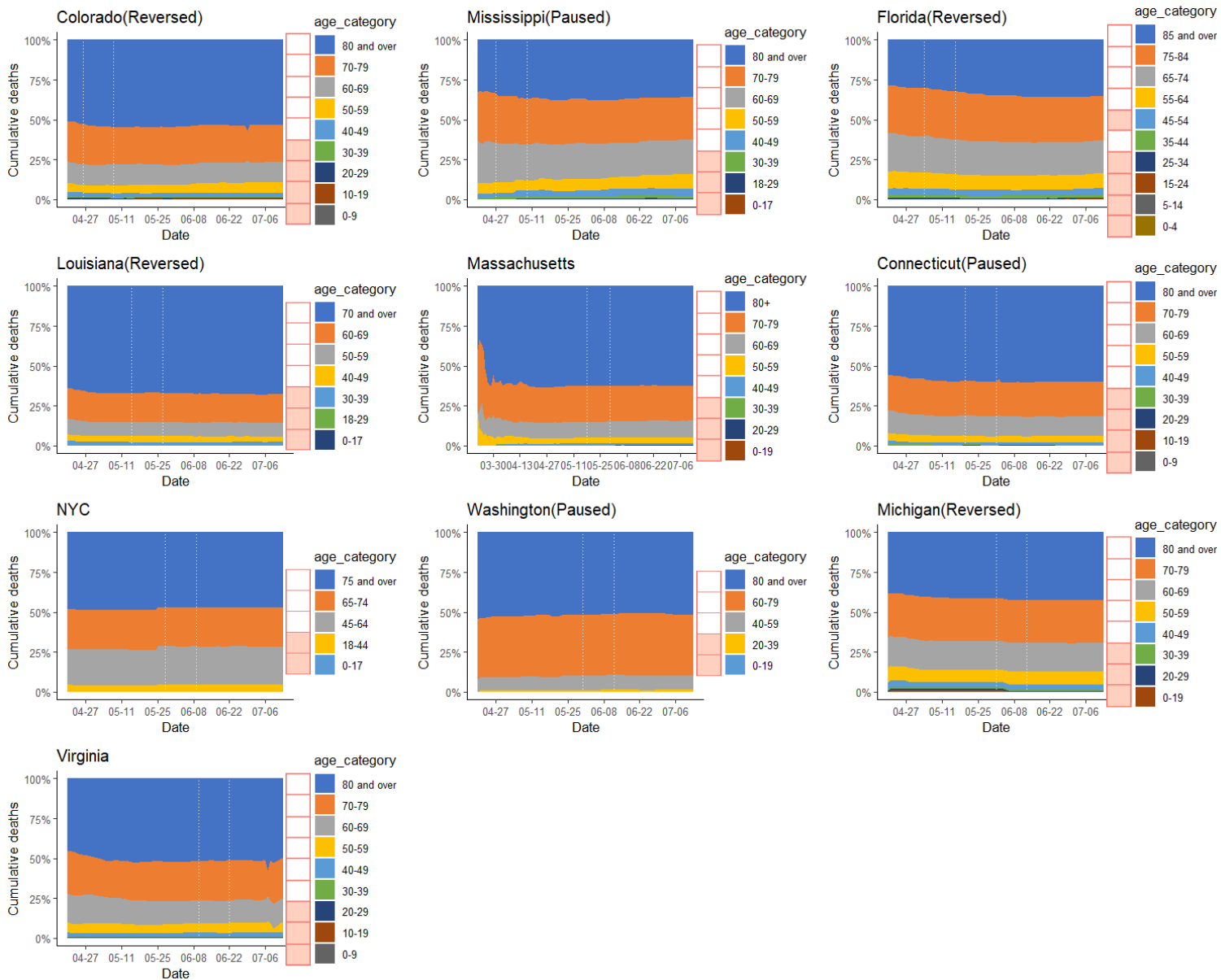
Supplementary Figure 5. Current or daily new hospitalizations vs. date in 36 US states. States are ordered by reopening date. Hospitalization data for Georgia, Tennessee, New York and Hawaii were not available. Date to the left indicates time range in which reopening occurred. Red bars and red lines show daily or current hospitalizations and 7-day average, respectively. Blue dashed line was fitted using Poisson regression before and after reopening. Two dotted vertical red lines indicate reopening date (left) and reopen date plus 12-day incubation period (right).



Supplementary Figure 6. Percent case share of age groups over time in 13 states or regions. States are ordered by reopening date. A color bar with red or white left to the legend indicates whether the age group had a positive slope coefficient in regression (red=positive).



Supplementary Figure 7. Hospitalization share of age groups over time in 5 states or regions. States are ordered by reopening date. A color bar with red or white left to the legend indicates whether the age group had a positive slope coefficient in regression (red=positive).



Supplementary Figure 8. Death share percentage of age groups over time in 10 states or regions. States are ordered by reopening date. A color bar with red or white left to the legend indicates whether the age group had a positive slope coefficient in regression (red=positive).