

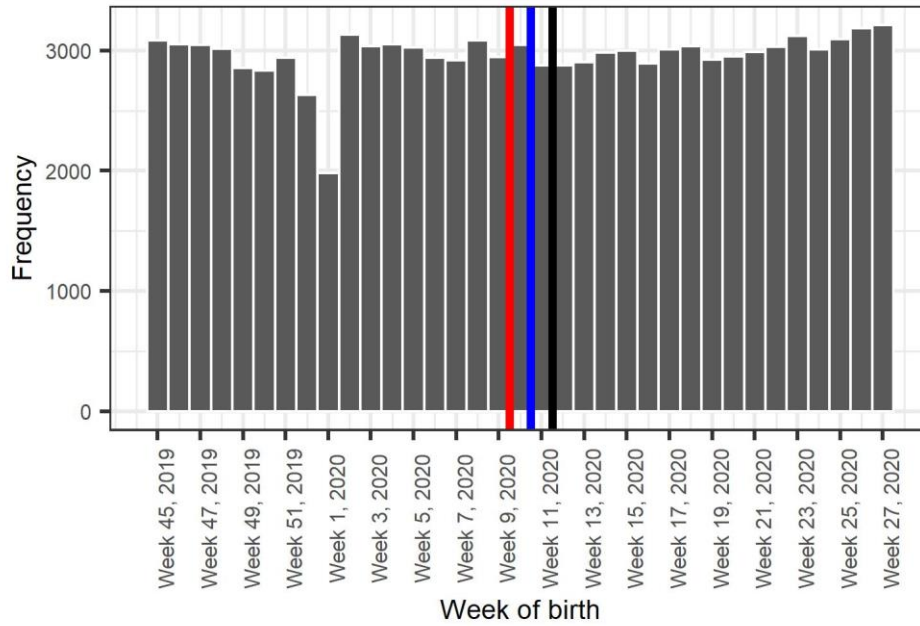
Supplement

Impact of COVID-19 mitigation measures on the incidence of preterm birth: a national quasi-experimental study

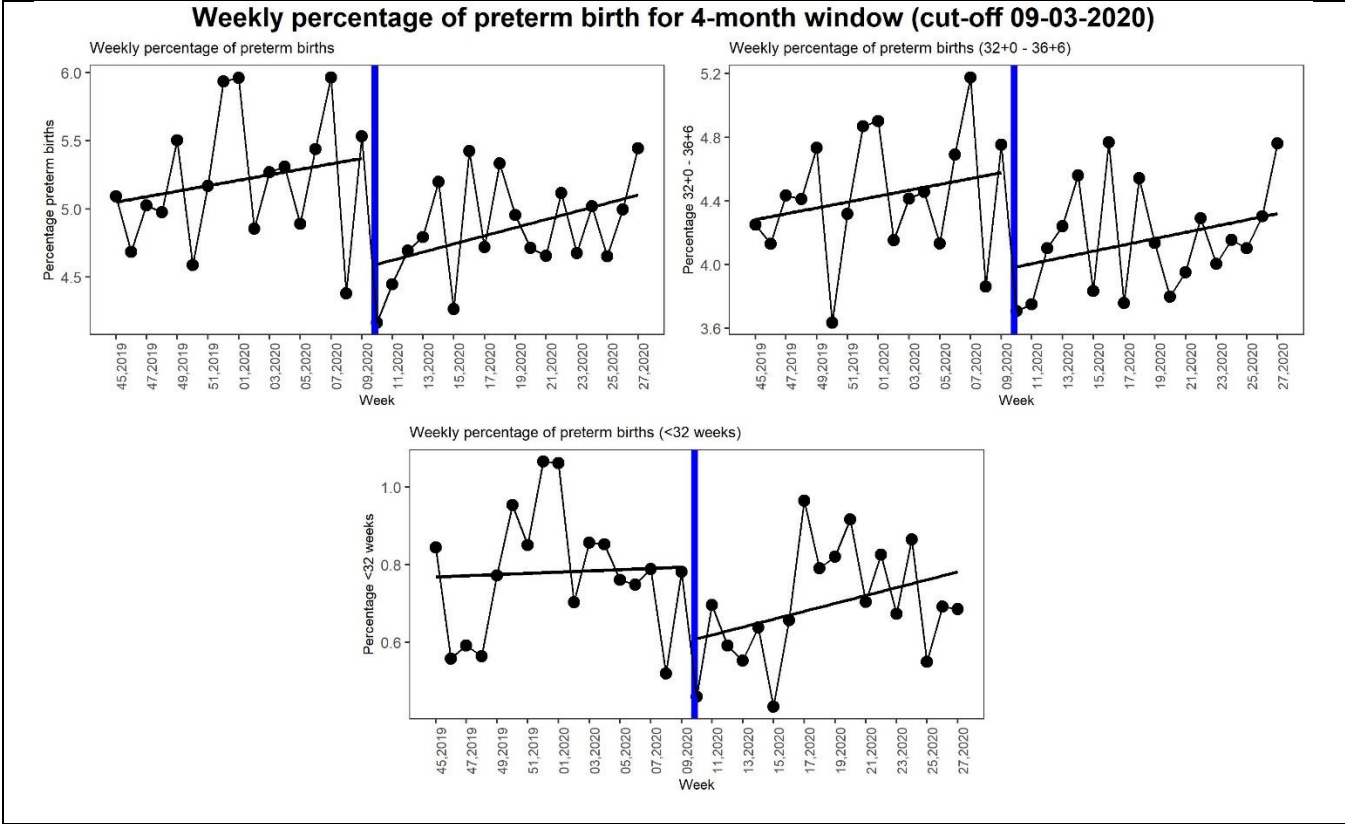
Jasper V Been, Lizbeth Burgos Ochoa, Loes CM Bertens, Sam Schoenmakers, Eric AP Steegers, Irwin KM Reiss

Assignment variable frequency

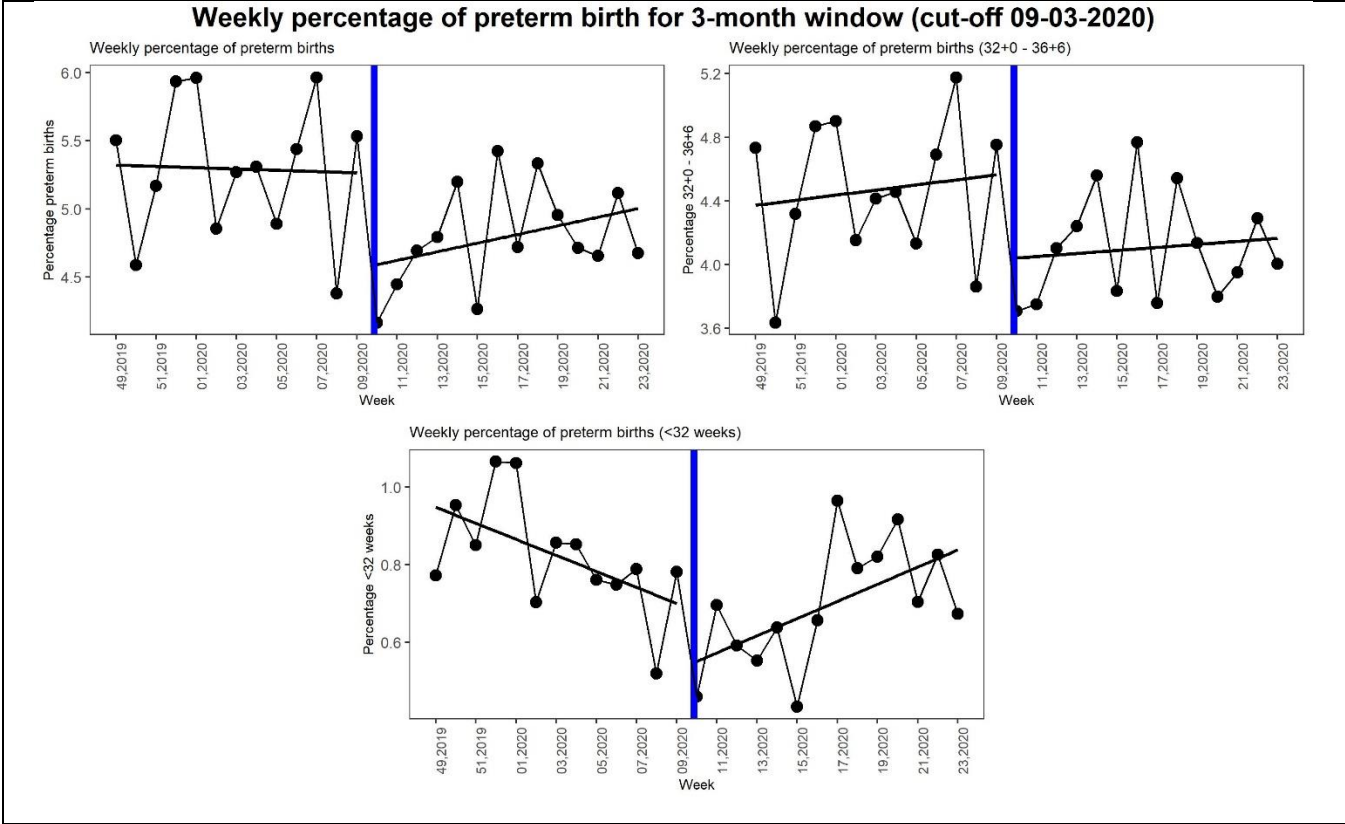
Cut-offs at 09-03-2020, 15-03-2020, and 23-03-2020



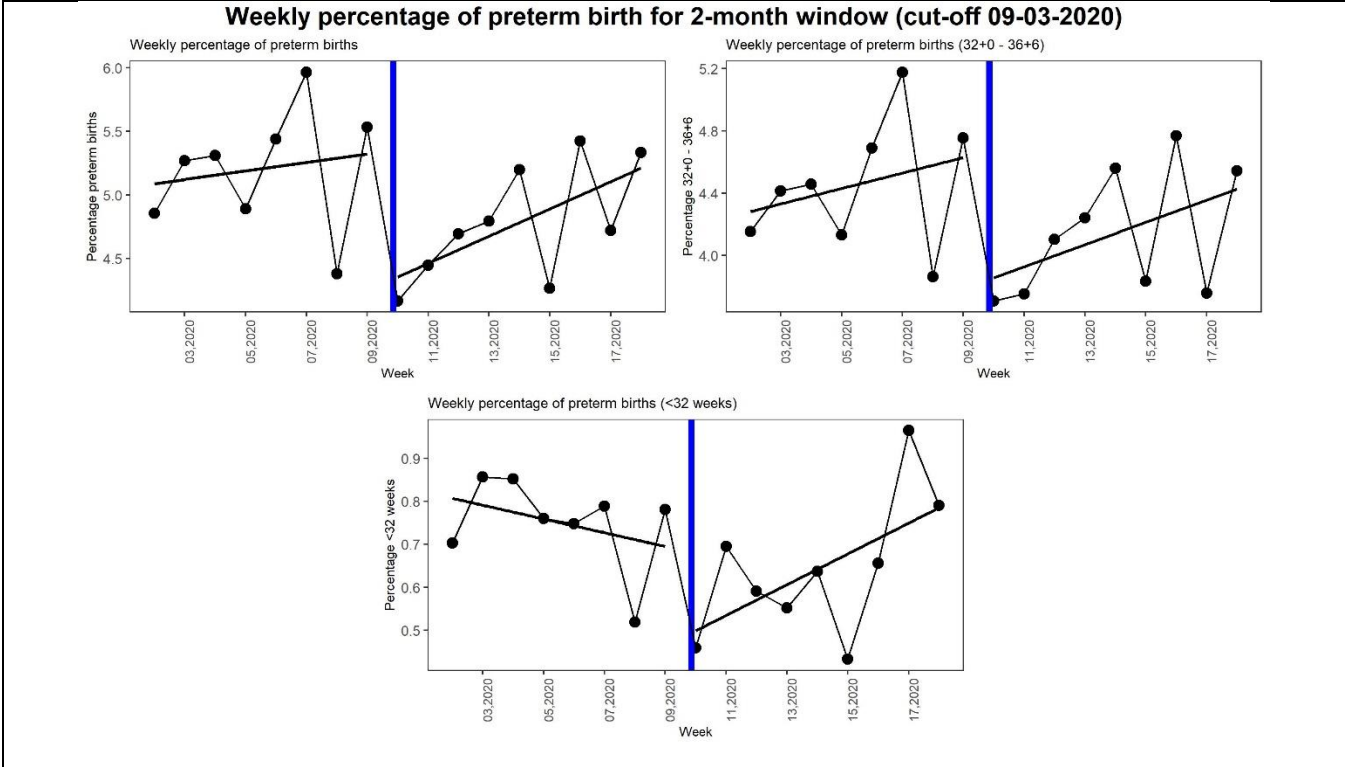
SUPPLEMENTAL FIGURE 1. HISTOGRAM OF ASSIGNMENT VARIABLE, DEMONSTRATING THAT WEEK OF BIRTH IS CONTINUOUS NEAR CUT-OFF VALUES AND NOT AFFECTED BY THE COVID-19 MITIGATION MEASURES



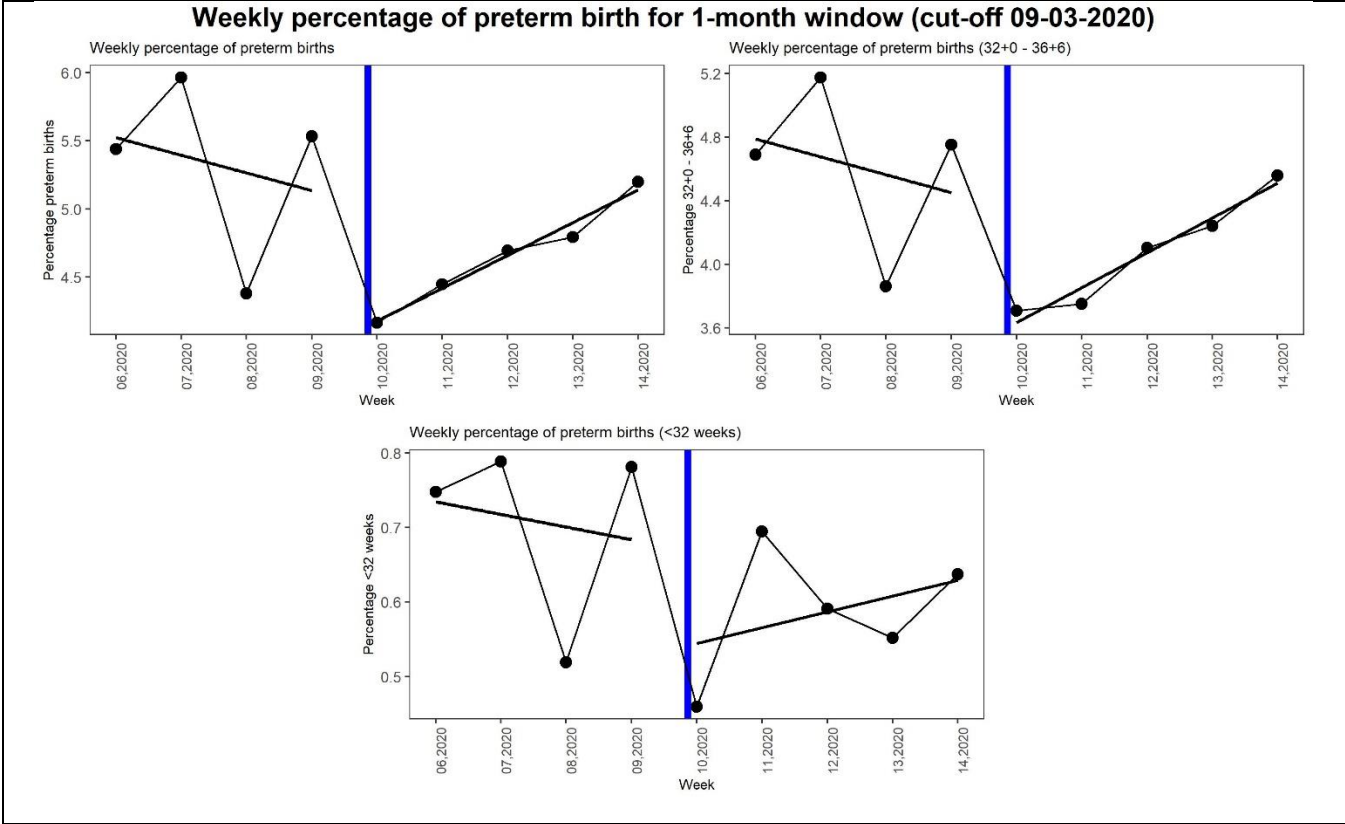
SUPPLEMENTAL FIGURE 2. WEEKLY PERCENTAGE OF PRETERM BIRTH FOR 4-MONTH WINDOW PLOTTED AGAINST ASSIGNMENT VARIABLE (WEEK OF BIRTH) TO SHOW DISCONTINUITY AT CUT-OFF VALUE (09-03-2020)



SUPPLEMENTAL FIGURE 3. WEEKLY PERCENTAGE OF PRETERM BIRTH FOR 3-MONTH WINDOW PLOTTED AGAINST ASSIGNMENT VARIABLE (WEEK OF BIRTH) TO SHOW DISCONTINUITY AT CUT-OFF VALUE (09-03-2020)

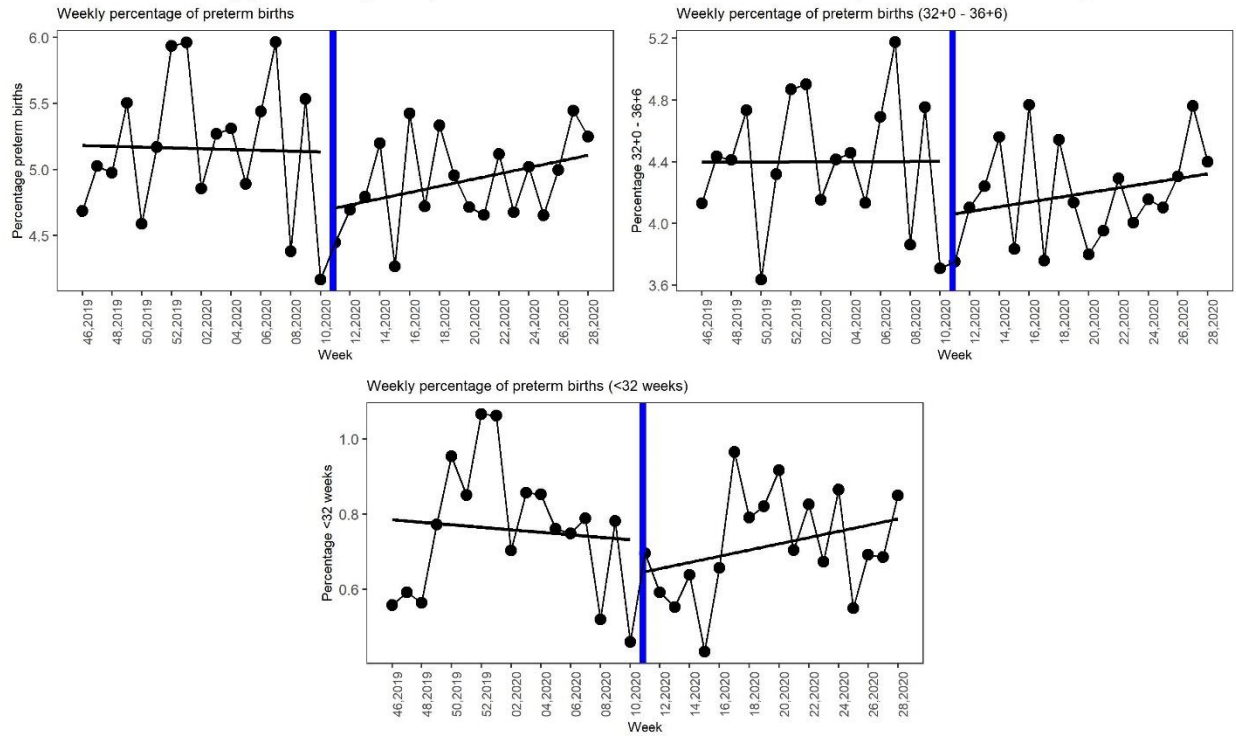


SUPPLEMENTAL FIGURE 4. WEEKLY PERCENTAGE OF PRETERM BIRTH FOR 2-MONTH WINDOW PLOTTED AGAINST ASSIGNMENT VARIABLE (WEEK OF BIRTH) TO SHOW DISCONTINUITY AT CUT-OFF VALUE (09-03-2020)

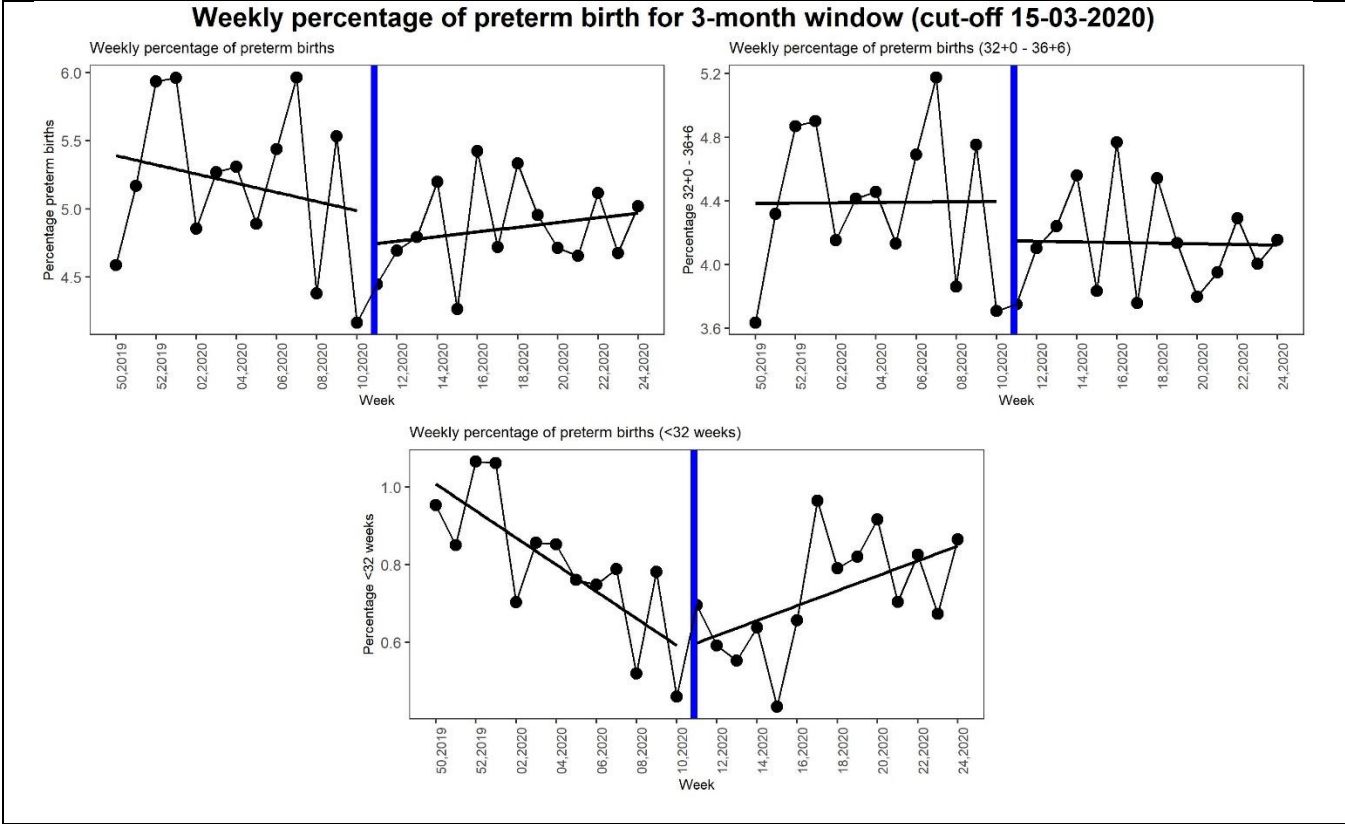


SUPPLEMENTAL FIGURE 5. WEEKLY PERCENTAGE OF PRETERM BIRTH FOR 1-MONTH WINDOW PLOTTED AGAINST ASSIGNMENT VARIABLE (WEEK OF BIRTH) TO SHOW DISCONTINUITY AT CUT-OFF VALUE (09-03-2020)

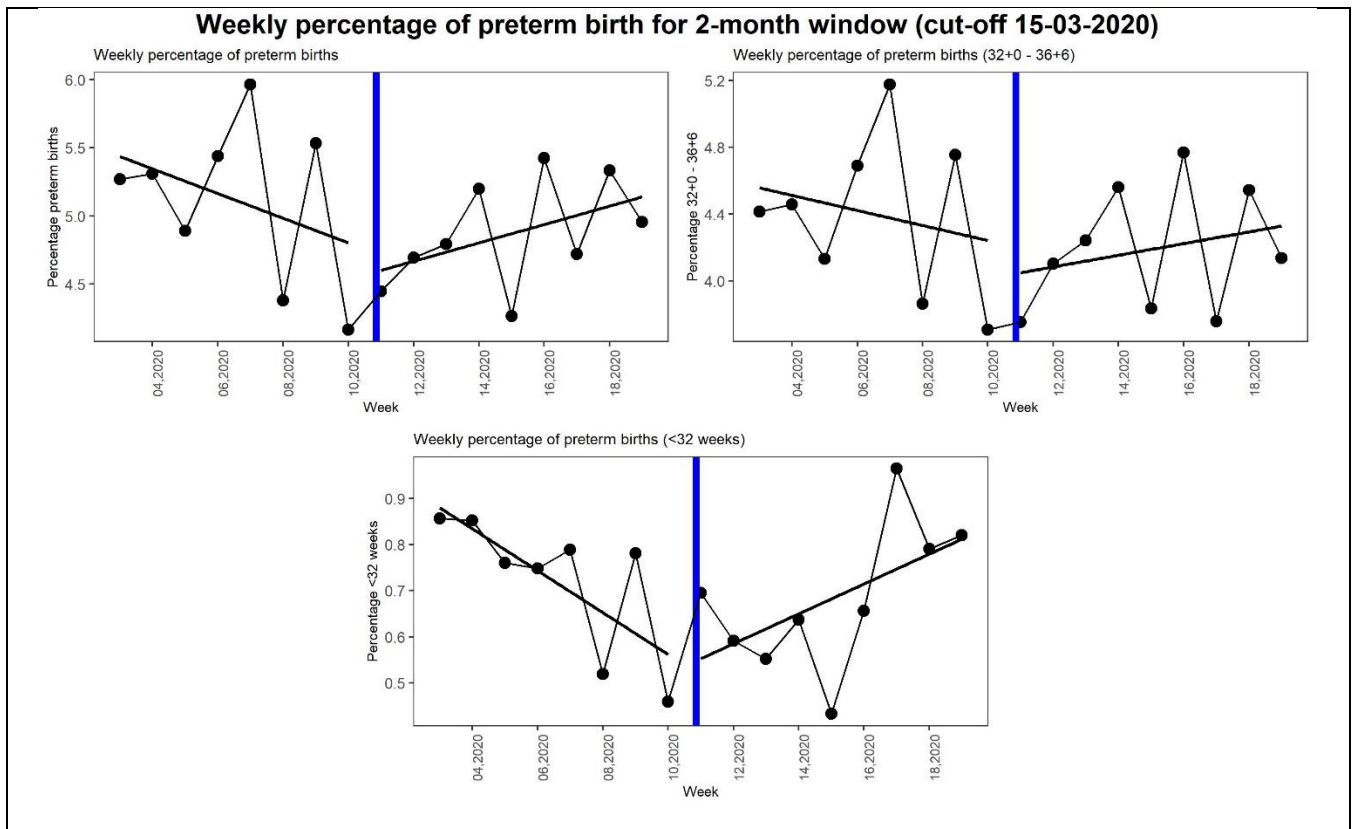
Weekly percentage of preterm birth for 4-month window (cut-off 15-03-2020)



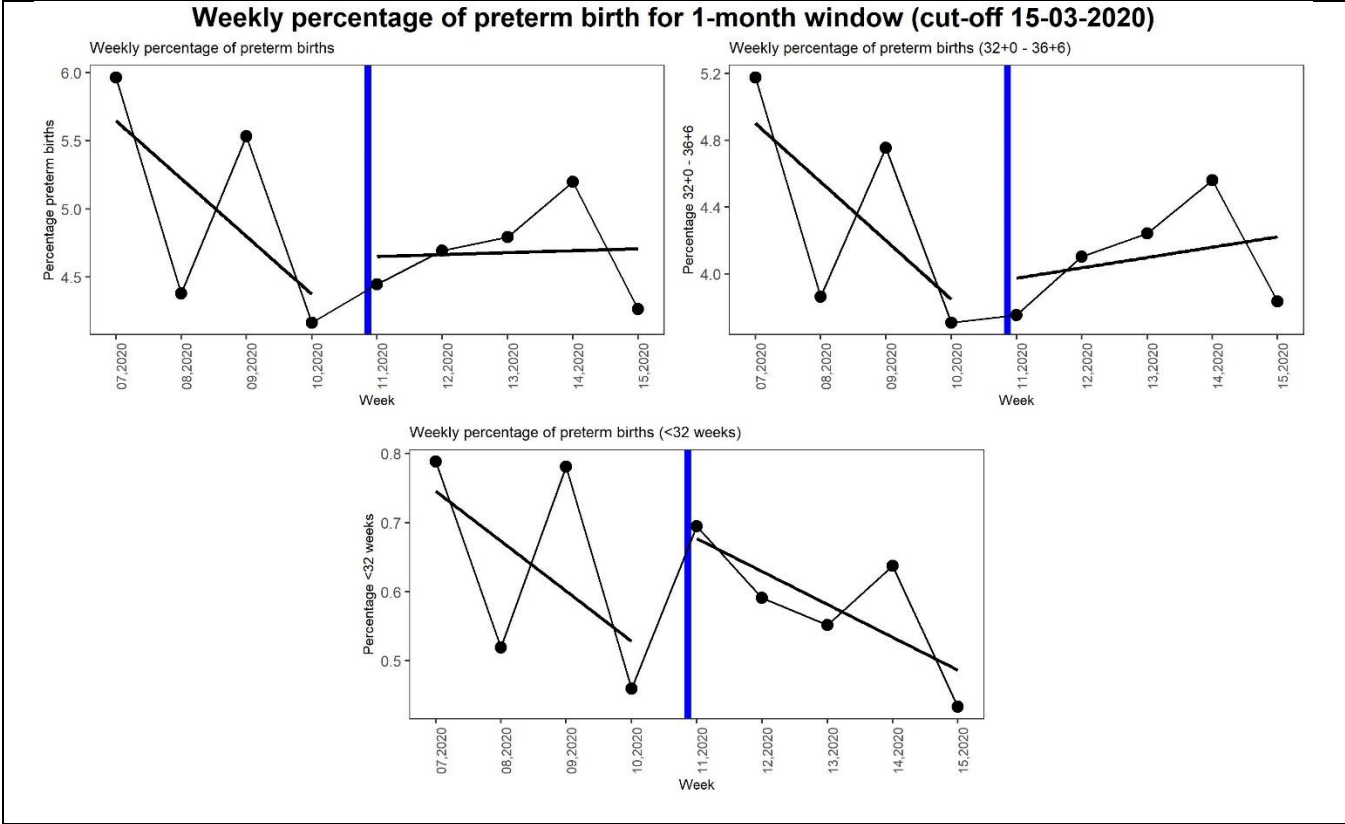
SUPPLEMENTAL FIGURE 6. WEEKLY PERCENTAGE OF PRETERM BIRTH FOR 4-MONTH WINDOW PLOTTED AGAINST ASSIGNMENT VARIABLE (WEEK OF BIRTH) TO SHOW DISCONTINUITY AT CUT-OFF VALUE (15-03-2020)



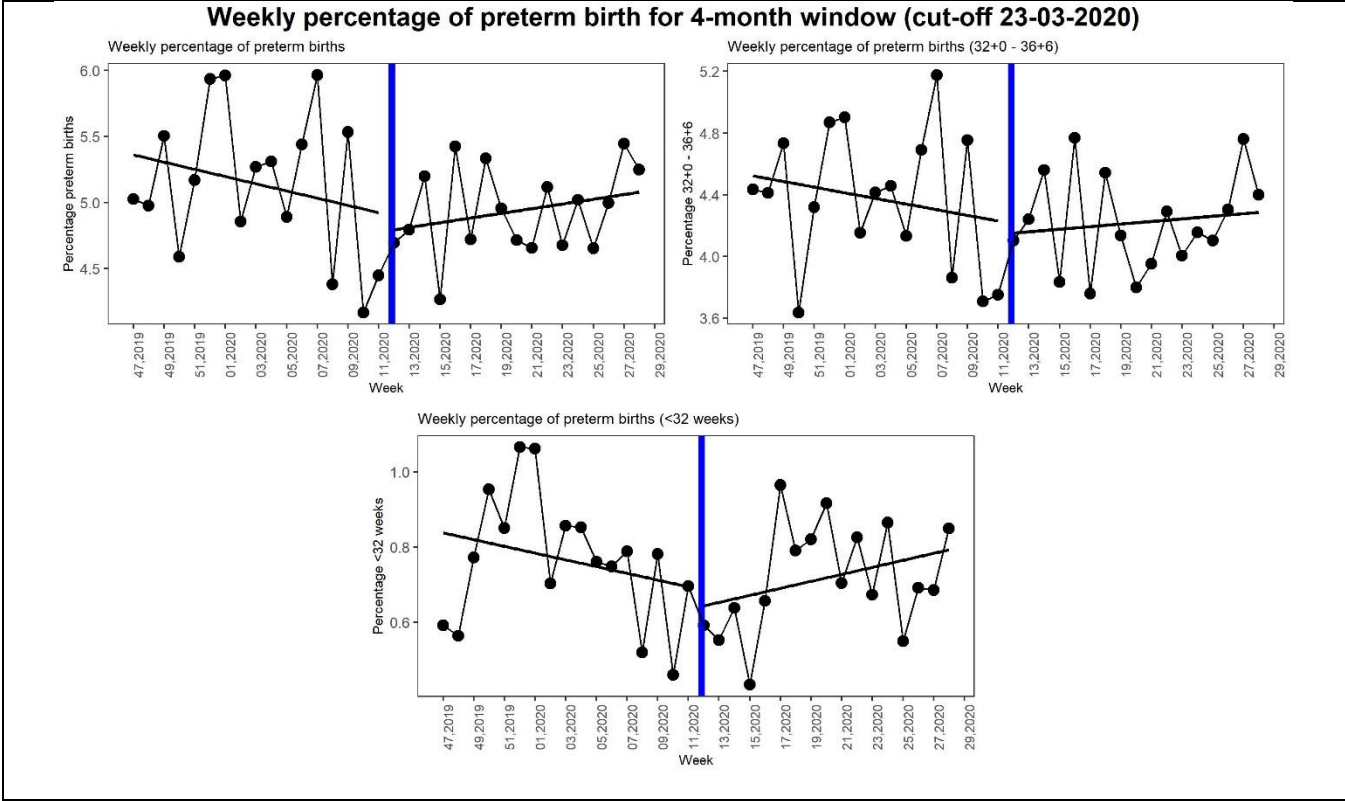
SUPPLEMENTAL FIGURE 7. WEEKLY PERCENTAGE OF PRETERM BIRTH FOR 3-MONTH WINDOW PLOTTED AGAINST ASSIGNMENT VARIABLE (WEEK OF BIRTH) TO SHOW DISCONTINUITY AT CUT-OFF VALUE (15-03-2020)



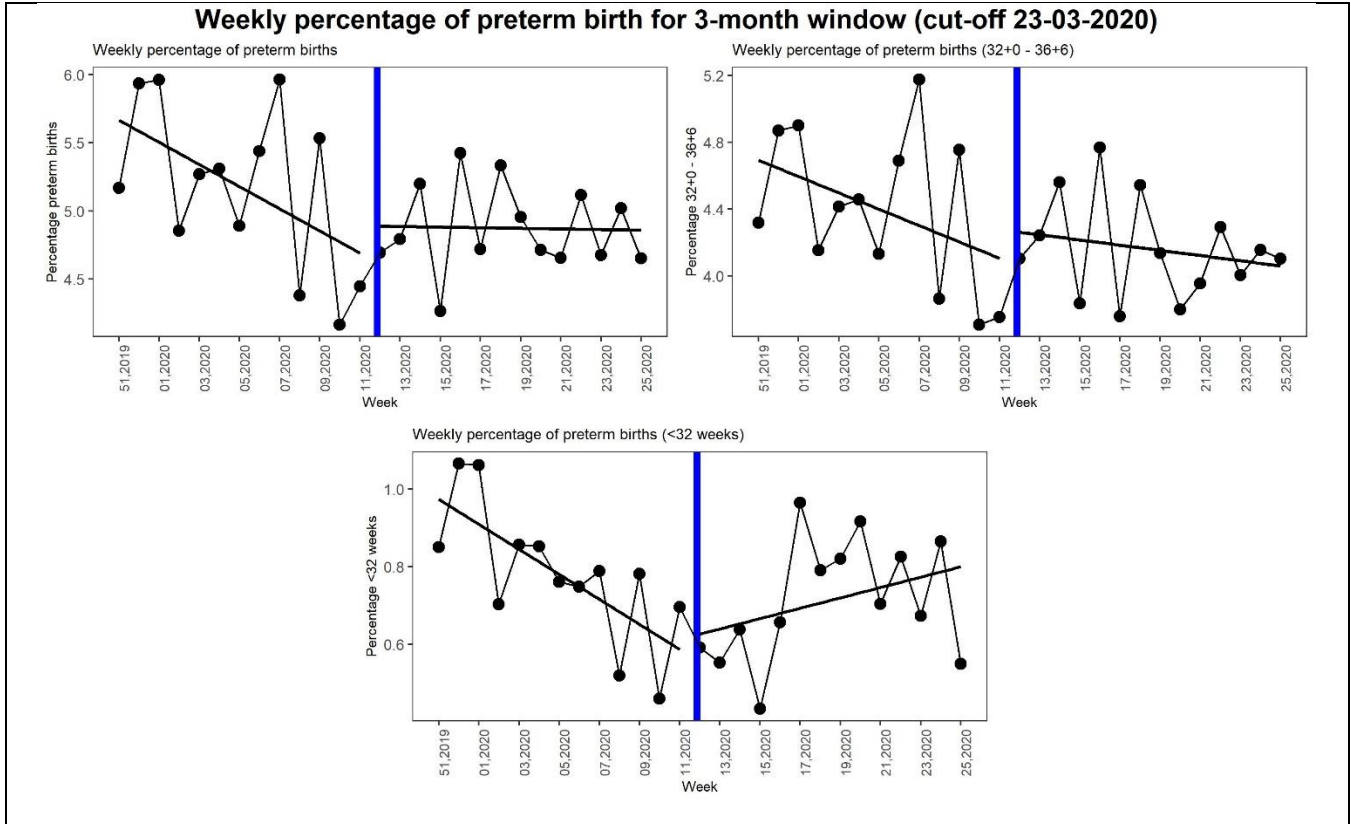
SUPPLEMENTAL FIGURE 8. WEEKLY PERCENTAGE OF PRETERM BIRTH FOR 2-MONTH WINDOW PLOTTED AGAINST ASSIGNMENT VARIABLE (WEEK OF BIRTH) TO SHOW DISCONTINUITY AT CUT-OFF VALUE (15-03-2020)



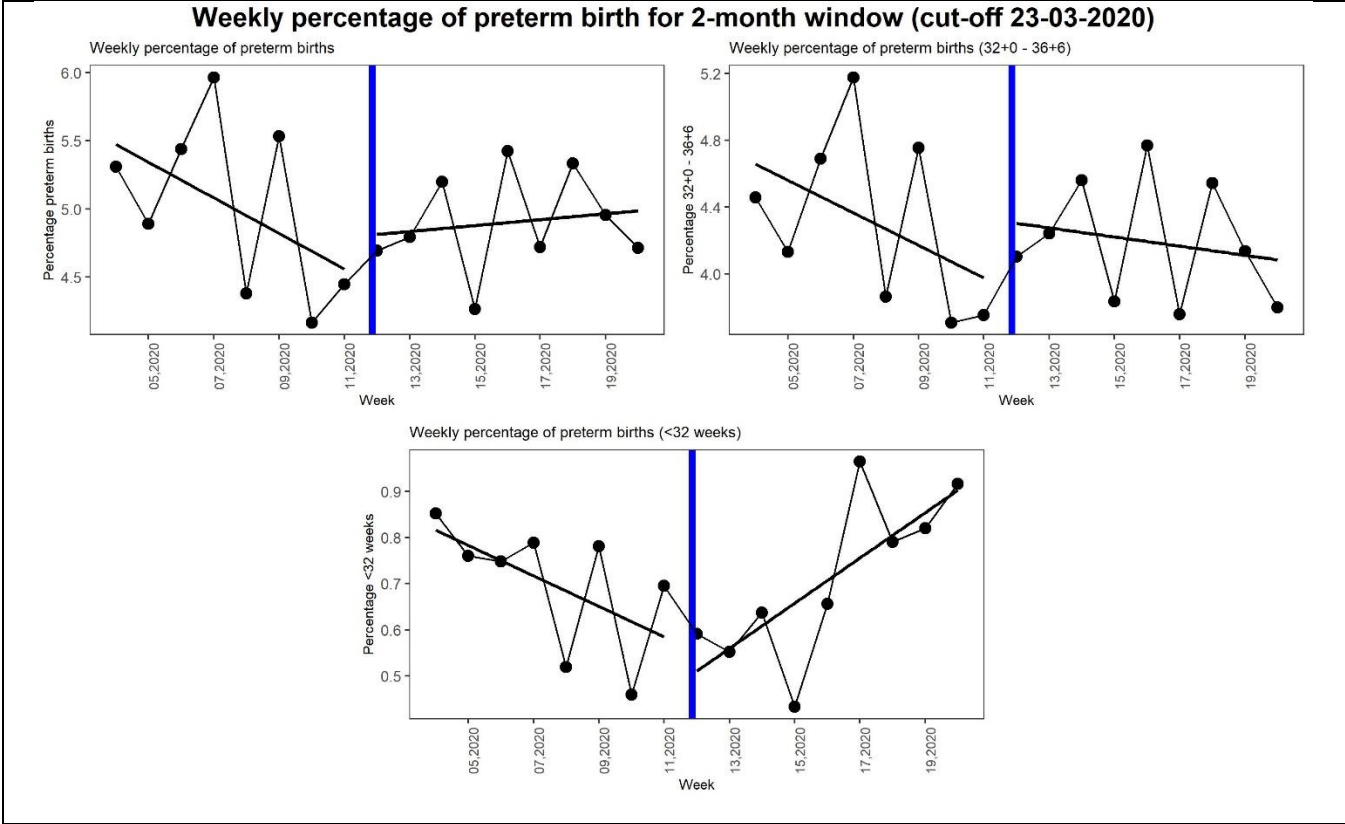
SUPPLEMENTAL FIGURE 9. WEEKLY PERCENTAGE OF PRETERM BIRTH FOR 1-MONTH WINDOW PLOTTED AGAINST ASSIGNMENT VARIABLE (WEEK OF BIRTH) TO SHOW DISCONTINUITY AT CUT-OFF VALUE (15-03-2020)



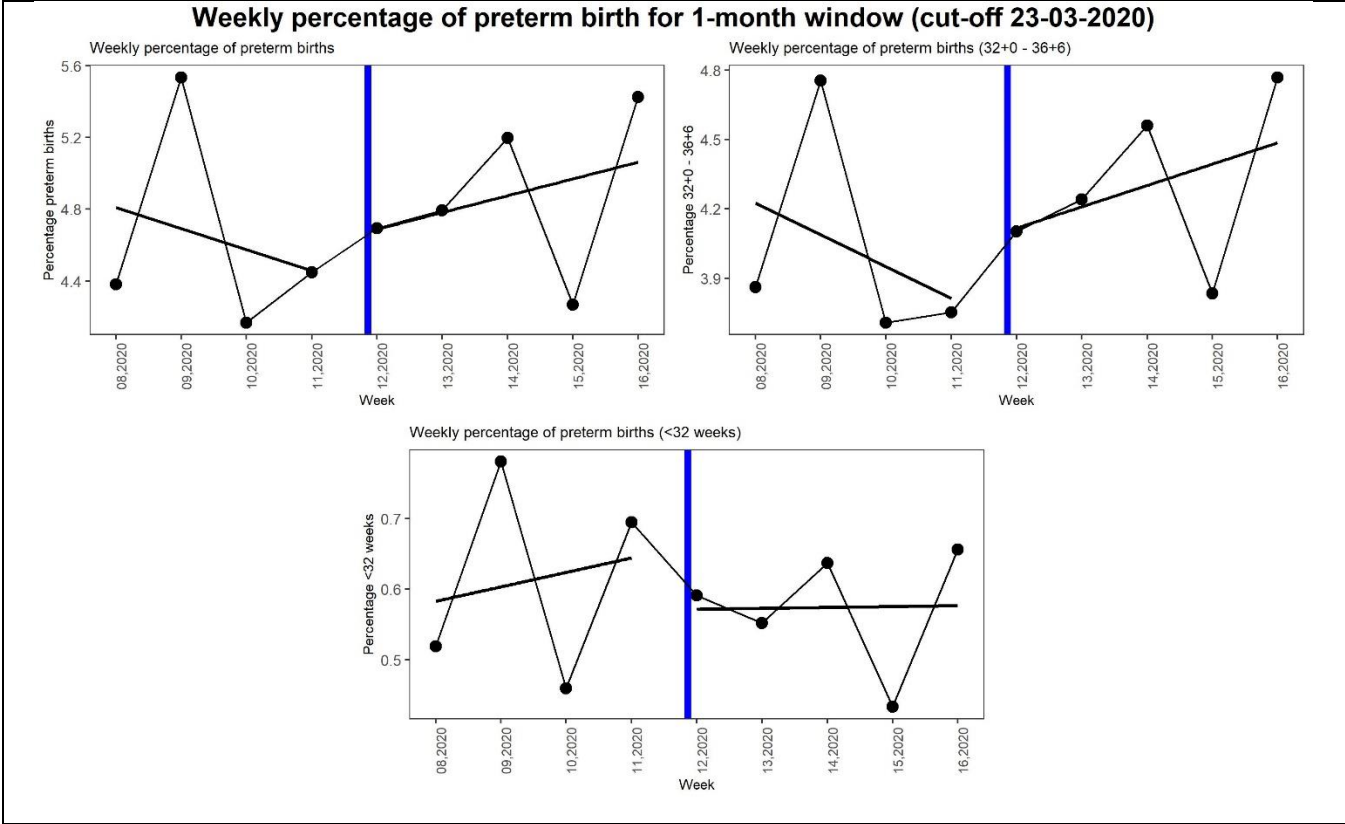
SUPPLEMENTAL FIGURE 10. WEEKLY PERCENTAGE OF PRETERM BIRTH FOR 4-MONTH WINDOW PLOTTED AGAINST ASSIGNMENT VARIABLE (WEEK OF BIRTH) TO SHOW DISCONTINUITY AT CUT-OFF VALUE (23-03-2020)



SUPPLEMENTAL FIGURE 11. WEEKLY PERCENTAGE OF PRETERM BIRTH FOR 3-MONTH WINDOW PLOTTED AGAINST ASSIGNMENT VARIABLE (WEEK OF BIRTH) TO SHOW DISCONTINUITY AT CUT-OFF VALUE (23-03-2020)



SUPPLEMENTAL FIGURE 12. WEEKLY PERCENTAGE OF PRETERM BIRTH FOR 2-MONTH WINDOW PLOTTED AGAINST ASSIGNMENT VARIABLE (WEEK OF BIRTH) TO SHOW DISCONTINUITY AT CUT-OFF VALUE (23-03-2020)



SUPPLEMENTAL FIGURE 13. WEEKLY PERCENTAGE OF PRETERM BIRTH FOR 1-MONTH WINDOW PLOTTED AGAINST ASSIGNMENT VARIABLE (WEEK OF BIRTH) TO SHOW DISCONTINUITY AT CUT-OFF VALUE (23-03-2020)

SUPPLEMENTAL TABLE 1: VALIDATION OF ANNUAL POPULATION CHARACTERISTICS AGAINST PERINED FOR SELECTED YEARS

Characteristic (n(%))	2011		2014		2017	
	Praeventis	Perined	Praeventis	Perined	Praeventis	Perined
Gestational age	n=173,965	n=172,453	n=169,375	n=169,225	n=164,478	n=160,818
24+0 – 31+6 weeks	1,223 (0.7)	1,512 (0.9)	1,236 (0.7)	1,515 (0.9)	1,139 (0.7)	1,345 (0.8)
32+0 – 36+6 weeks	8,081 (4.6)	8,221 (4.8)	7,772 (4.6)	7,883 (4.7)	7,218 (4.4)	7,363 (4.6)
37+0 – 41+6 weeks	161,070 (92.6)	157,565 (91.4)	157,523 (93.0)	154,998 (91.6)	153,196 (93.1)	149,493 (93.0)
≥42+0 weeks	3,107 (1.8)	3,022 (1.8)	2,285 (1.3)	2,213 (1.3)	2,287 (1.4)	2,316 (1.4)
missing	484 (0.3)	2,115 (1.2)	559 (0.3)	2,646 (1.6)	638 (0.4)	301 (0.2)
Birth weight^a	n=173,965	n=172,886	n=169,375	n=169,673	n=164,478	n=161,232
<1500 grams	1,054 (0.6)	1,801 (1.1)	1,079 (0.6)	1,812 (1.0)	1,059 (0.6)	1,525 (1.0)
1500 – 2499 grams	6,299 (3.6)	6,613 (3.8)	6,462 (3.8)	6,787 (4.0)	5,918 (3.6)	5,993 (3.7)
2500 – 3499 grams	82,177 (47.2)	81,569 (47.2)	82,303 (48.6)	82,434 (48.6)	79,130 (48.1)	77,552 (48.1)
3500 – 3999 grams	58,131 (33.5)	57,252 (33.1)	55,803 (32.9)	55,267 (32.6)	55,247 (33.6)	53,837 (33.4)
4000 – 4499 grams	21,551 (12.4)	21,167 (12.2)	19,986 (11.8)	19,845 (11.7)	19,400 (11.8)	18,939 (11.7)
≥4500 grams	4,134 (2.4)	4,099 (2.4)	3,229 (1.9)	3,228 (1.9)	3,116 (1.9)	3,051 (1.9)
missing	437 (0.3)	385 (0.2)	513 (0.3)	300 (0.2)	608 (0.4)	335 (0.2)

Only singleton births at gestational ages ≥24+0 weeks are included in the comparisons; note that Perined data also includes stillbirths. ^aFor Perined the birth weight distribution includes births at gestational ages ≥22+0 weeks instead of ≥24+0 weeks.

SUPPLEMENTAL TABLE 1: IMPACT OF THE 9 MARCH COVID-19 MITIGATION MEASURES ON THE INCIDENCE OF PRETERM BIRTH: EFFECT MODIFICATION BY NEIGHBOURHOOD SOCIO-ECONOMIC STATUS

Variable	Time window around implementation			
	±1 month	±2 months	±3 months	±4 months
COVID-19 measures	0.74 (0.55–0.99)	0.74 (0.60–0.91)	0.85 (0.71–1.01)	0.87 (0.73–1.02)
SES				
High SES	REF	REF	REF	REF
Medium SES	1.10 (1.05–1.15)	1.13 (1.09–1.16)	1.11 (1.08–1.14)	1.12 (1.09–1.14)
Low SES	1.08 (1.02–1.14)	1.11 (1.07–1.16)	1.10 (1.06–1.13)	1.12 (1.08–1.15)
COVID-19 measures × SES (interaction)				
High SES	REF	REF	REF	REF
Medium SES	1.16 (0.94–1.44)	1.07 (0.91–1.25)	1.01 (0.89–1.13)	0.98 (0.88–1.09)
Low SES	1.17 (0.90–1.52)	1.12 (0.92–1.35)	1.01 (0.87–1.18)	0.99 (0.87–1.13)

SES = socioeconomic status; REF = reference category

SUPPLEMENTAL TABLE 3: IMPACT OF THE 9 MARCH COVID-19 MITIGATION MEASURES ON THE INCIDENCE OF PRETERM BIRTH: CENSORING OF ONE OR TWO WEEKS PRIOR TO OR FOLLOWING THE MEASURES

Period of censoring	Time window around implementation			
	±1 month	±2 months	±3 months	±4 months
Two weeks prior to implementation	1.10 (0.71–1.70)	0.79 (0.63–0.99)	0.89 (0.73–1.07)	0.89 (0.74–1.07)
One week prior to implementation	0.83 (0.62–1.12)	0.80 (0.66–0.96)	0.88 (0.75–1.03)	0.87 (0.75–1.01)
One week following implementation	0.83 (0.64–1.07)	0.78 (0.65–0.93)	0.86 (0.73–1.00)	0.86 (0.74–0.99)
Two weeks following implementation	0.82 (0.63–1.07)	0.77 (0.64–0.93)	0.86 (0.73–1.01)	0.86 (0.73–1.00)

SES = socioeconomic status; REF = reference category