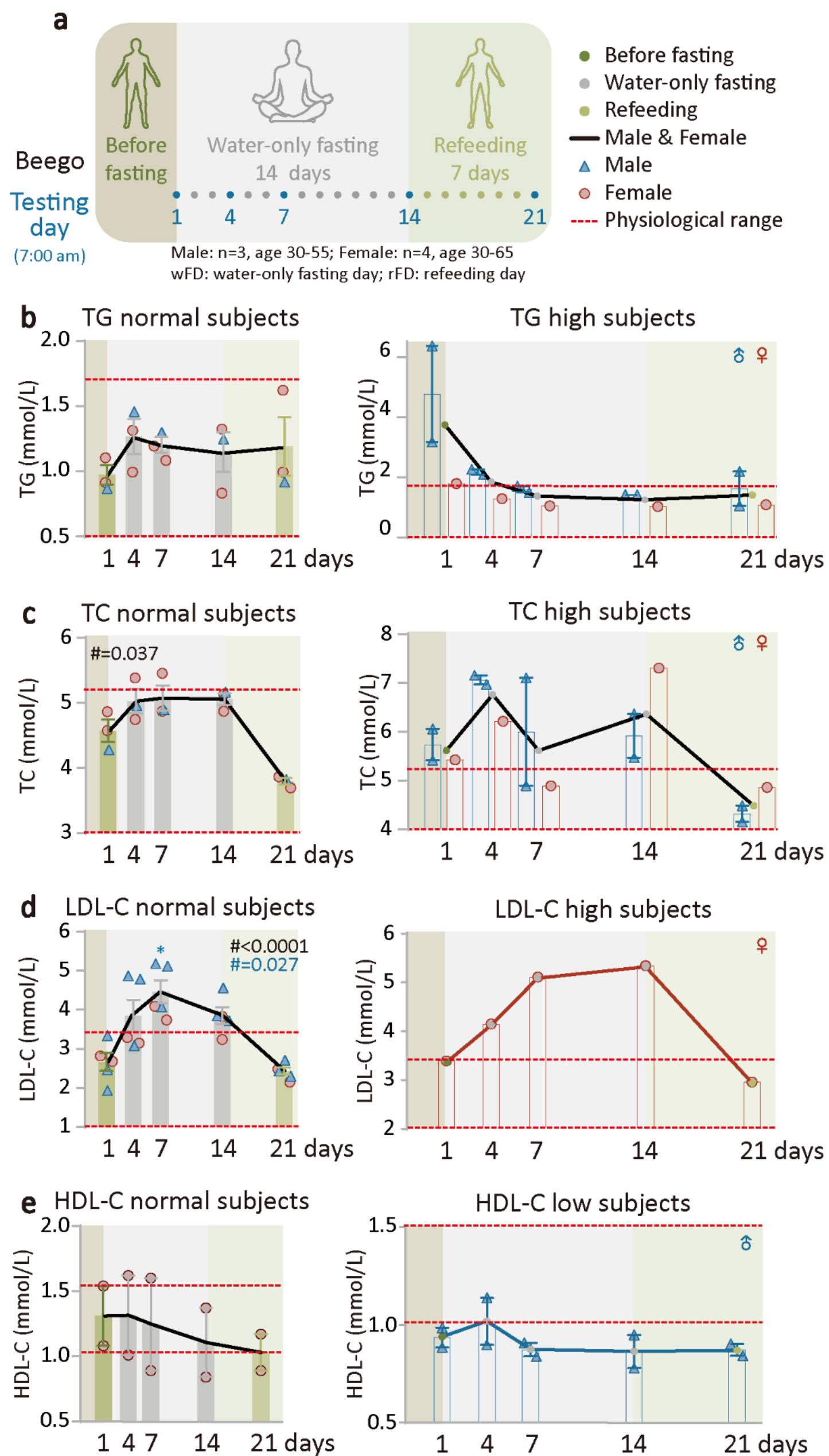
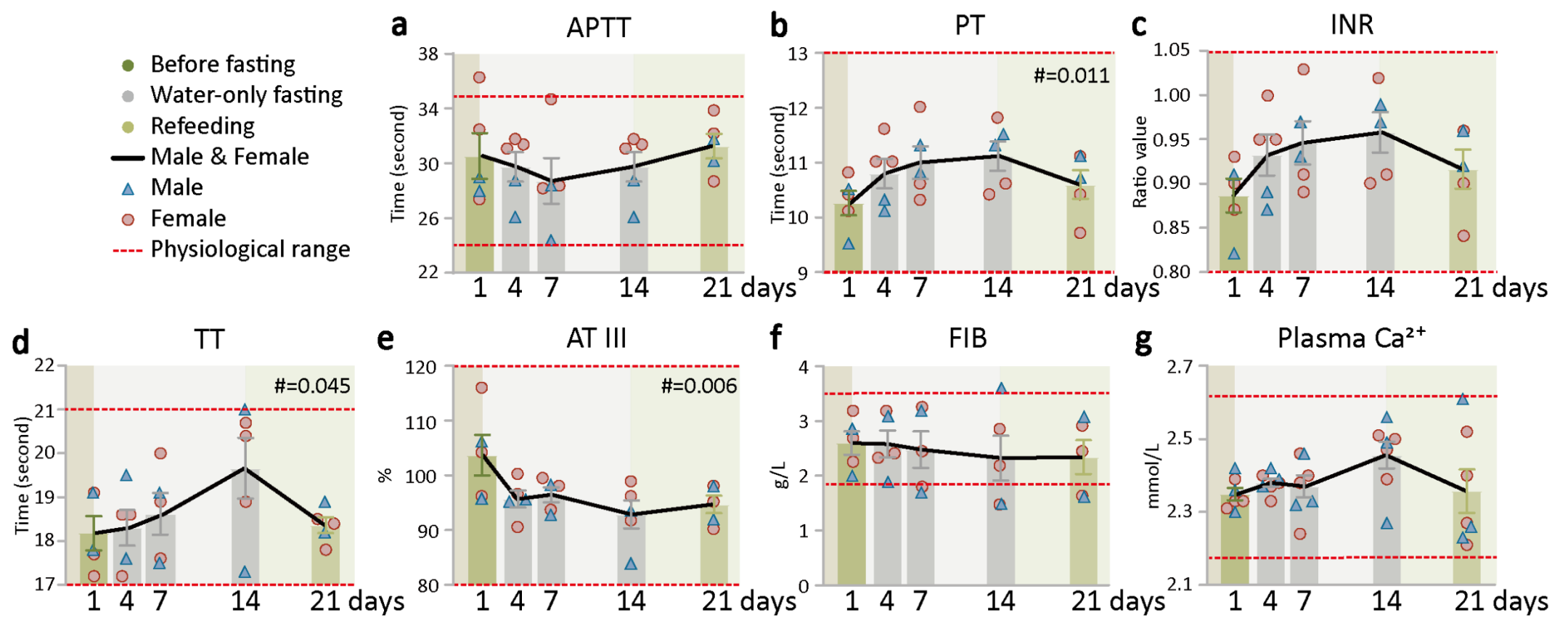


# Supervised beego, a traditional Chinese water-only fasting, ends up with reduced thrombosis risk without compromising hemostasis capacity

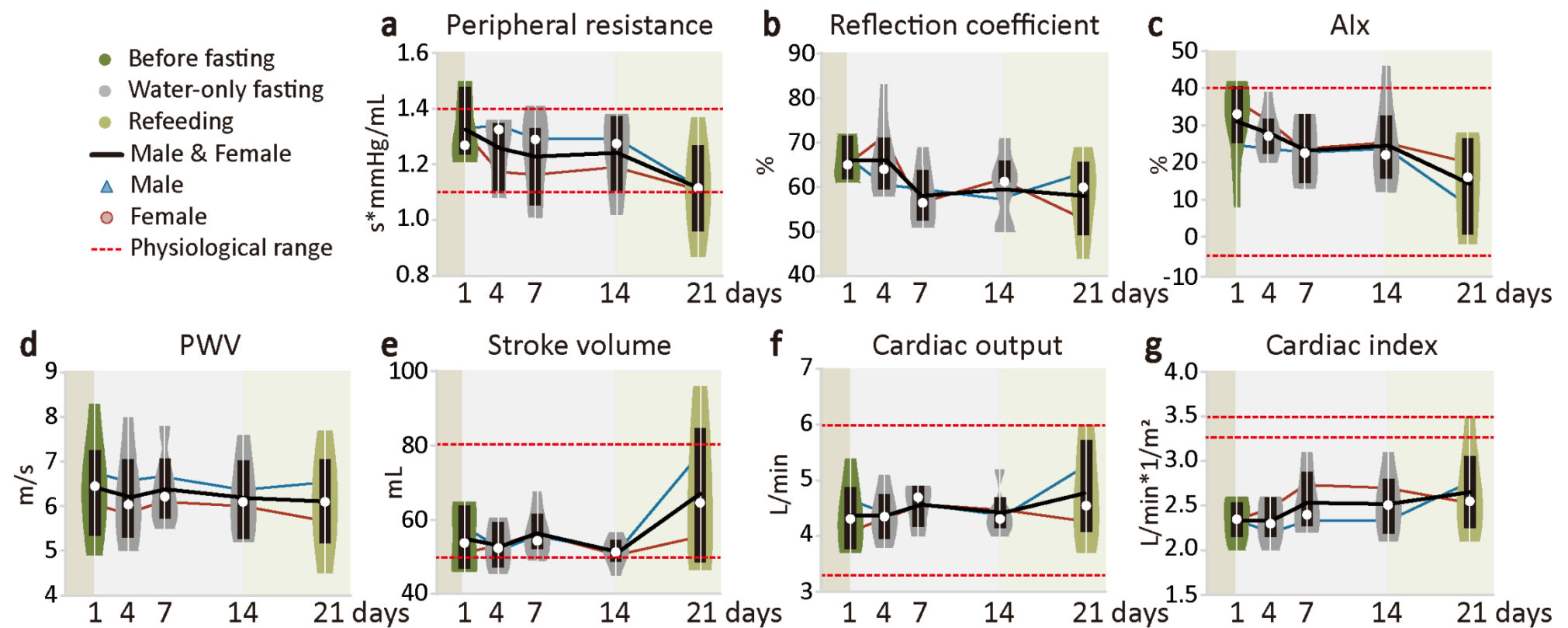
## Supplementary Figures



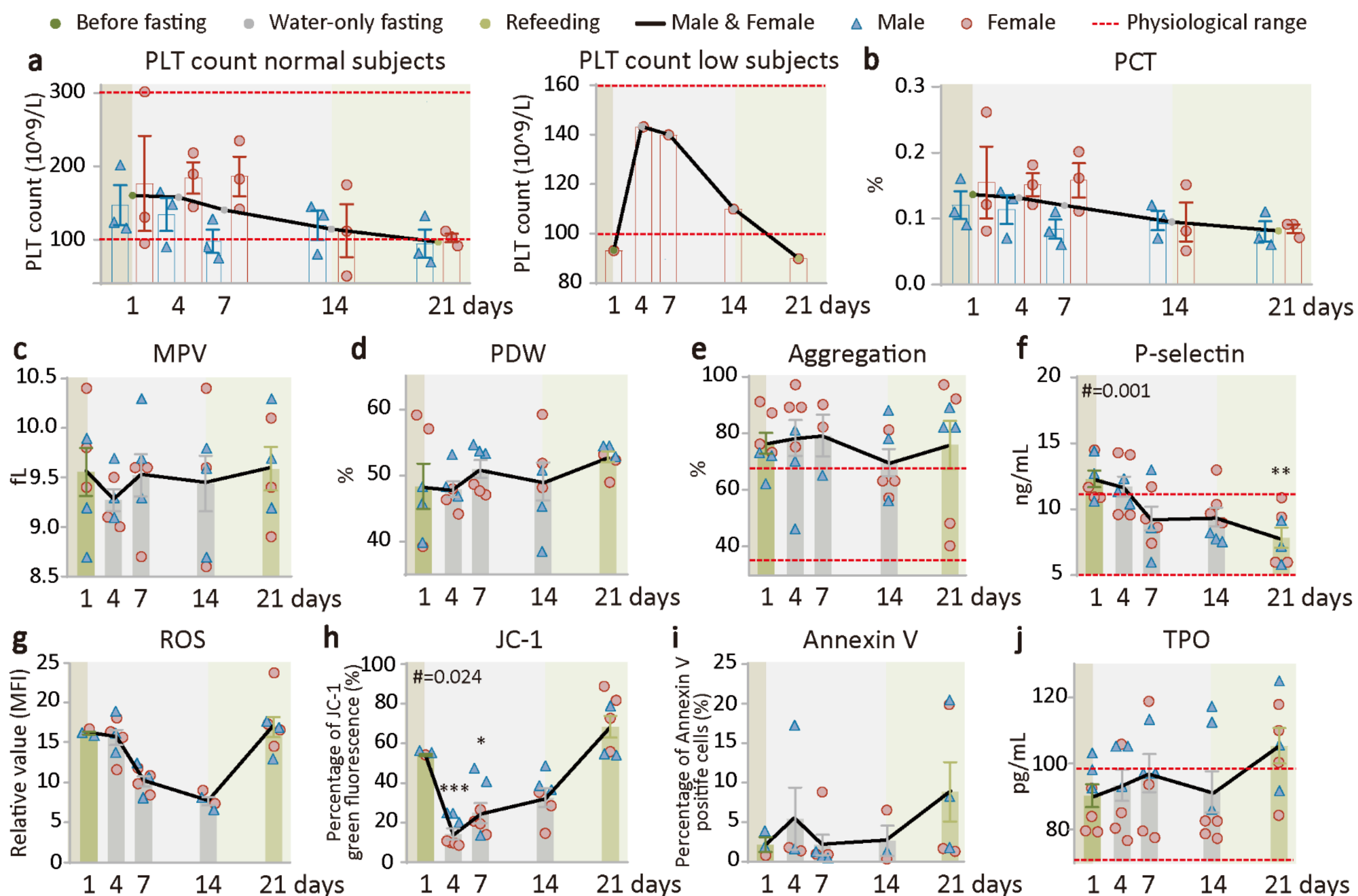
**Supplementary figure S1. Supervised beego alleviates thrombosis risk.** **a.** Protocol of Beego. The protocol includes fourteen water-only fasting days and seven refeeding days (rFD). Testing at 7:00-9:00 am of the following days: wFD 1, 4, 7, 14 and rFD 7 as indicated. **b.** blood triacylglycerol (TG) test in TG normal (male=1, female=2) and high (male=2, female=1) subjects. **c.** Blood total cholesterol (TC) test in TC normal (male=1, female=2) and TC high (male=2, female=1) subjects. **d.** Low-density lipoprotein cholesterol (LDL-C) test in LDL-C normal (male=3, female=2) and high (female=1) subjects. **e.** HDL-C in the normal (female=2) and low (male=2) subjects. Data are means  $\pm$  SEM. \* $P < 0.05$ ; \*\* $P < 0.01$ ; \*\*\* $P < 0.001$ . \*significant compared to the wFD1 (7:00 am) right before fasting starts .



**Supplementary Figure S2 . Supervised beego maintains hemostasis capacity. a-d.** Coagulation tests. Clotting dynamics was measured at five time points (wFD1, wFD4, wFD7, wFD14 and rFD7). The tests include activated partial thromboplastin time (APTT, male=2, female=3), prothrombin time (PT, male=2, female=3), internal normalized ratio (INR, male=2, female=3), thrombin time (TT, male=2, female=3). **e-g.** Plasma levels of hemostatic biomarkers. The levels of critical proteins in hemostasis were measured at five time points as indicated. The tests include Antithrombin III (AT III, male=2, female=3); fibrinogen (FIB, male=2, female=3); Ca<sup>2+</sup> in plasma, male=3, female=4). Data are means  $\pm$  SEM. \* $P < 0.05$ ; \*\* $P < 0.01$ ; \*\*\* $P < 0.001$ . \*significant compared to the wFD1 (7:00 am) right before fasting starts.



**Supplementary Figure S3. Supervised beego improves cardiovascular physiology. a-d.** Violin plots of vascular health measured with mobil-O-Graph PWA and analyzed by repeat measurement analysis and multiple comparison. Measurements include peripheral resistance (male=3, female=3), reflection coefficient (male=3, female=3), augmentation index (Aix, male=3, female=3), pulse wave velocity (PWV, male=3, female=3). **e-g.** Violin plots of cardiac health measured with mobil-O-Graph PWA. Measurements include stroke volume (male=3, female=3), cardiac output (male=3, female=3) and cardiac index (male=3, female=3). Data are means  $\pm$  SEM. \* $P < 0.05$ ; \*\* $P < 0.01$ ; \*\*\* $P < 0.001$ . \*significant compared to the wFD1 (7:00 am) right before fasting starts.



**Supplementary Figure S4. Supervised beego reduces platelet counts but retains platelet function.** **a.** Platelet (PLT) count in PLT normal (male=3, female=3) or low groups (female=1). **b-d.** Platelet hematocrit (PCT, male=3, female=3), Mean platelet volume (MPV, male=3, female=3), Platelet distribution width (PDW, male=3, female=3). **e.** Platelet aggregation test. The platelet aggregation after stimulation was tested at the days as indicated. male=3, female=4). **f.** ELISA measurement of P-selectin level in plasma, male=3, female=4). **g-j.** Flow cytometric measurement of platelet biology at the time points indicated. Total reactive oxygen species (ROS) levels in platelets (male=3, female=4);  $\Delta\Psi_m$  depolarization of mitochondria (JC-1, male=5, female=5); Percentage of Annexin V positive platelets (male=5, female=5). **j.** ELISA measurement of Thrombopoietin (TPO) level in plasma, male=3, female=4). Data are means  $\pm$  SEM. \* $P < 0.05$ ; \*\* $P < 0.01$ ; \*\*\* $P < 0.001$ . \*significant compared to the wFD (7:00 am) right before fasting starts.

## Refeeding Protocol

Following the water-only fasting, subjects refeed for a period of time lasting no less of half of the fasting length. We specified a specific diet and eating protocol for each of 7 refeeding days. Note that ingredient availability and typical kitchen implements are quite homogenous for most Chinese households, and counselors worked with the participants to customize serving sizes.

--Refeeding day 1 and 2:

Morning, midday, and evening: prepare a rice soup cooked with a small amount of millet by boiling the rice thoroughly with water. Only the liquid soup should be consumed (i.e., do not eat rice grains, consume no more than half a bowl of this soup at a given feeding session, but feel free to consume this soup as many as 6 or 7 times on day 1 and day 2. If it is inconvenient for you at workplace or office, you may use baby rice noodles instead. The baby rice noodles should be with millet original flavor for zero stage baby use. Don't eat too much, and do it step by step.

--Refeeding day3:

You may take vegetable soup (except spinach). For preparation the soup, wash and chop the vegetables, add water and boil; do not add oil, salt or any other seasoning. Take less veg and more soup, about half a bowl each. You may also buy baby rice noodles and eat them between meals. The baby rice noodles should be with millet original flavor for zero stage baby use. Don't eat too much, and do it step by step.

--Refeeding day 4:

You may have gruel in the morning and noodles with fresh tender vegetable leaves in the noon and evening. Make sure to boil them thoroughly. A small amount of oil and salt, but not other seasonings, may be added to the noodle. Must be tiny oil and salt, and noodles must be cooked soft. Never eat too much.

--Refeeding day 5:

For breakfast, you may have gruel or boiled noodles, with small amount of oil and salt ; you may eat boiled eggs, but only eat egg yolk. For noon meal, you may eat a small amount of rice, and rice should be soft, and eat fried green vegetables with less oil and salt. it is best to drink gruel in the evening. On the fifth day of refeeding, you may add an appropriate amount of fruits, such as pears, watermelons and other fruits with more water. Don't eat too much.

--Refeeding day 6:

For breakfast, you may eat rice porridge or noodles, and boiled eggs, but only eat egg yolk. For noon and evening meal, you may eat rice (should be well done cooked) and fried green vegetables and fried tofu with less oil and salt. It is necessary to control the amount of food you take, chew food thoroughly and swallow slowly when eating. Do not drink tea and alcohol in the refeeding period.

--Refeeding day 7:

You may eat almost normally, but do not eat fried, spicy and meat food, step by step, so that your intestines and stomach can gradually return to normal function.

**Table S1: 7-day water-only fasting**

Index	Gender	Mean [SEM]				Adjusted <i>P</i> -value vs wFD1				
		wFD1	wFD4	wFD7	rFD7	wFD4	wFD7	rFD7		
TG (mmol/L)	Normal	M, n=6	1.172[0.164]	1.538[0.169]	1.417[0.151]	1.333[0.070]	<i>P</i> =0.006	<i>P</i> =0.027	<i>P</i> =0.461	
		F, n=16	0.959[0.074]	1.458[0.116]	1.352[0.122]	1.133[0.070]				
	High	M, n=4	2.788[0.535]	2.003[0.150]	1.713[0.142]	1.280[0.245]	<i>P</i> =0.6730	<i>P</i> =0.6585	<i>P</i> =0.6585	
		F, n=3	2.027[0.230]	1.323[0.139]	1.283[0.089]	1.363[0.055]	<i>P</i> =0.029	<i>P</i> =0.029	<i>P</i> =0.029	
	TC (mmol/L)	Normal	M, n=5	4.408[0.243]	5.454[0.364]	5.528[0.571]	4.266[0.126]	<i>P</i> =0.216	<i>P</i> =0.216	<i>P</i> =0.985
			F, n=12	4.201[0.117]	5.062[0.165]	5.002[0.122]	3.918[0.151]	<i>P</i> <0.0001	<i>P</i> =0.0015	<i>P</i> =0.3570
High		M, n=5	6.476[0.332]	7.658[0.289]	4.880[0.000]	6.222[0.588]	<i>P</i> =0.1365	<i>P</i> =0.0570	<i>P</i> =0.9280	
		F, n=7	5.697[0.131]	7.210[0.313]	5.223[0.343]	5.197[0.195]	<i>P</i> =0.003	<i>P</i> =0.444	<i>P</i> =0.444	
LDL-C (mmol/L)		Normal	M, n=5	2.752[0.147]	3.650[0.316]	4.510[0.470]	2.690[0.169]	<i>P</i> =0.0105	<i>P</i> <0.0001	<i>P</i> =1.0000
			F, n=13	2.322[0.141]	3.002[0.175]	3.766[0.221]	2.325[0.195]	<i>P</i> =0.0495	<i>P</i> <0.0001	<i>P</i> =1.0000
	High	M, n=5	4.244[0.367]	5.718[0.270]	6.946[0.525]	4.728[0.558]	<i>P</i> =0.1215	<i>P</i> =0.0060	<i>P</i> =0.7850	
		F, n=6	3.750[0.087]	5.025[0.345]	5.700[0.290]	3.465[0.182]	<i>P</i> =0.006	<i>P</i> <0.0001	<i>P</i> =0.754	
	HDL-C (mmol/L)	Normal	M, n=6	1.183[0.063]	1.143[0.067]	0.931[0.057]	0.994[0.077]	<i>P</i> =0.9500	<i>P</i> =0.1020	<i>P</i> =0.2025
			F, n=18	1.278[0.050]	1.387[0.056]	1.240[0.045]	1.083[0.055]	<i>P</i> =0.4905	<i>P</i> =0.9170	<i>P</i> =0.0930
Low		M, n=4	0.938[0.033]	0.973[0.048]	0.793[0.067]	0.838[0.060]				
		F, n=1	1.010[0.000]	1.550[0.000]	1.450[0.000]	1.030[0.000]				
APTT (second)		M, n=11	31.555[0.644]	30.700[1.090]	29.027[0.806]	30.382[1.036]	<i>P</i> =0.529	<i>P</i> =0.282	<i>P</i> =0.529	
		F, n=17	30.400[0.719]	29.129[0.757]	28.124[0.770]	29.182[0.751]				
PT (second)	M, n=11	10.500[0.148]	10.670[0.159]	11.327[0.175]	10.691[0.212]	<i>P</i> =0.841	<i>P</i> =0.015	<i>P</i> =0.841		
	F, n=17	10.319[0.147]	10.876[0.176]	11.253[0.160]	10.312[0.126]	<i>P</i> =0.0525	<i>P</i> <0.0001	<i>P</i> =1.0000		

INR (ratio value)	M, n=11	0.905[0.013]	0.922[0.013]	0.977[0.015]	0.923[0.018]	<i>P</i> =0.787	<i>P</i> =0.012	<i>P</i> =0.787
	F, n=17	0.889[0.013]	0.938[0.015]	0.970[0.014]	0.889[0.011]	<i>P</i> =0.0495	<i>P</i> <0.0001	<i>P</i> =1.0000
TT (second)	M, n=11	18.300[0.350]	17.660[0.246]	17.918[0.233]	18.382[0.308]			
	F, n=17	17.963[0.168]	17.676[0.098]	18.065[0.107]	18.324[0.243]			
AT III (%)	M, n=11	97.982[2.319]	99.900[1.615]	97.527[1.493]	100.891[0.906]			
	F, n=17	103.375[2.000]	97.965[1.551]	94.835[0.780]	96.953[1.137]	<i>P</i> =0.0260	<i>P</i> <0.0001	<i>P</i> =0.0105
FIB (g/L)	M, n=11	2.505[0.265]	3.114[0.275]	2.895[0.158]	2.454[0.128]	<i>P</i> =0.3960	<i>P</i> =0.6405	<i>P</i> =0.9960
	F, n=17	2.458[0.099]	2.968[0.143]	2.645[0.121]	2.252[0.104]	<i>P</i> =0.03	<i>P</i> =0.55	<i>P</i> =0.55
Ca <sup>2+</sup> (mmol/L)	M, n=11	2.364[0.028]	2.429[0.025]	2.446[0.021]	2.337[0.042]	<i>P</i> =0.450	<i>P</i> =0.435	<i>P</i> =0.870
	F, n=20	2.320[0.019]	2.360[0.021]	2.384[0.026]	2.341[0.035]			
Peripheral resistance (* mmHg/mL)	M, n=10	1.313[0.065]	1.234[0.032]	1.237[0.042]	1.241[0.070]			
	F, n=18	1.225[0.051]	1.229[0.042]	1.320[0.028]	1.105[0.064]	<i>P</i> =1.0000	<i>P</i> =0.8445	<i>P</i> =0.8445
Reflection coefficient (%)	M, n=10	66.222[2.284]	65.444[1.386]	60.889[2.563]	56.444[1.582]	<i>P</i> =0.9800	<i>P</i> =0.2265	<i>P</i> =0.0060
	F, n=18	62.125[1.335]	63.188[1.988]	60.000[2.204]	60.688[2.560]			
Alx (%)	M, n=10	20.333[3.333]	25.000[2.472]	24.889[2.157]	11.889[3.545]	<i>P</i> =0.588	<i>P</i> =0.588	<i>P</i> =0.180
	F, n=18	21.313[2.313]	30.688[2.851]	32.938[2.718]	18.125[2.794]	<i>P</i> =0.099	<i>P</i> =0.051	<i>P</i> =0.550
PWV (m/s)	M, n=10	6.400[0.344]	6.444[0.373]	6.189[0.381]	6.244[0.364]			
	F, n=18	5.806[0.254]	5.556[0.231]	5.775[0.254]	5.656[0.261]	<i>P</i> =1	<i>P</i> =1	<i>P</i> =1
Cardiac output (L/min)	M, n=10	4.489[0.201]	4.689[0.118]	4.544[0.148]	4.633[0.172]			
	F, n=18	4.338[0.216]	4.000[0.119]	4.050[0.109]	4.675[0.243]	<i>P</i> =0.897	<i>P</i> =0.897	<i>P</i> =0.897
Cardiac index (L/min * 1/m <sup>2</sup> )	M, n=10	2.411[0.116]	2.533[0.085]	2.467[0.105]	2.500[0.118]			
	F, n=18	2.625[0.105]	2.425[0.088]	2.531[0.073]	2.863[0.140]	<i>P</i> =0.519	<i>P</i> =0.850	<i>P</i> =0.519

Blood pressure (mmHg)									
Left	F, n=1	Sbp	143	114	124	119			
		Dbp	107	77	87	81			
Middle	M, n=1	Sbp	141	147	144	136			
		Dbp	94	94	93	89			
Right	F, n=2	Sbp	156[6.000]	137[9.500]	146[3.000]	131[6.000]			
		Dbp	89[1.500]	79[0.000]	87[5.000]	77.5[3.500]			
	M, n=10	Sbp	125.1[3.104]	122.9[3.086]	121.6[2.845]	122.3[3.347]			
		Dbp	74.2[2.607]	73.4[2.701]	73.9[2.132]	73.3[2.642]			
	F, n=18	Sbp	112.611[3.192]	108.722[2.799]	113.944[3.234]	110.556[2.862]			
		Dbp	67.944[3.110]	64.000[2.265]	72.333[2.036]	65.111[2.475]	<i>P</i> =0.887	<i>P</i> =0.887	<i>P</i> =0.887
PLT (10 <sup>9</sup> /L)									
Normal	M, n=11		154.000[10.015]	106.364[8.883]	128.091[15.246]	94.818[11.144]	<i>P</i> =0.024	<i>P</i> =0.278	<i>P</i> =0.006
	F, n=20		142.900[13.913]	132.500[10.956]	121.550[10.196]	93.632[9.327]	<i>P</i> =0.8510	<i>P</i> =0.5985	<i>P</i> =0.0240
Low	F, n=5		61.111[11.205]	122.444[29.375]	109.333[27.872]	92.222[25.196]			
PCT (%)									
	M, n=11		0.146[0.009]	0.103[0.007]	0.122[0.014]	0.090[0.010]	<i>P</i> =0.0255	<i>P</i> =0.2610	<i>P</i> =0.0060
	F, n=20		0.135[0.012]	0.128[0.010]	0.116[0.009]	0.093[0.008]	<i>P</i> =0.9250	<i>P</i> =0.6195	<i>P</i> =0.0360
MPV (fL)									
	M, n=11		9.355[0.142]	9.782[0.165]	9.455[0.122]	9.745[0.167]			
	F, n=20		9.560[0.192]	9.750[0.151]	9.600[0.167]	10.026[0.211]	<i>P</i> =0.997	<i>P</i> =0.997	<i>P</i> =0.540
PDW (%)									
	M, n=11		45.955[1.017]	50.891[1.529]	49.809[1.753]	52.236[1.030]	<i>P</i> =0.0585	<i>P</i> =0.1320	<i>P</i> =0.0210
	F, n=20		45.770[1.669]	48.325[1.074]	50.735[1.221]	51.337[1.505]	<i>P</i> =0.419	<i>P</i> =0.051	<i>P</i> =0.051
Aggregation (%)									
	M, n=11		70.600[4.966]	64.444[6.594]	81.800[5.825]	67.143[7.732]			
	F, n=20		74.200[9.332]	75.533[5.012]	87.722[2.843]	70.154[5.938]			



P-selectin (ng/mL)		M, n=11	12.341[0.634]	10.454[0.678]	9.199[0.558]	9.185[0.538]	<i>P</i> =0.084	<i>P</i> =0.003	<i>P</i> =0.003
		F, n=19	11.359[0.418]	10.699[0.458]	9.749[0.430]	9.574[0.479]	<i>P</i> =0.5950	<i>P</i> =0.0525	<i>P</i> =0.0510
ROS (MFI)		M, n=5	18.290[1.466]	12.236[0.952]	10.034[1.311]	8.518[0.668]	<i>P</i> =0.0070	<i>P</i> =0.0015	<i>P</i> <0.0001
		F, n=5	17.092[0.658]	14.894[0.962]	7.378[1.087]	8.684[0.327]	<i>P</i> =0.175	<i>P</i> <0.0001	<i>P</i> <0.0001
JC-1 (%)		M, n=5	57.097[1.911]	17.996[3.308]	21.794[3.116]	28.378[5.076]	<i>P</i> <0.0001	<i>P</i> <0.0001	<i>P</i> =0.001
		F, n=5	57.148[2.009]	41.102[10.411]	44.160[14.892]	33.844[4.403]			
Annexin V (%)		M, n=5	6.886[3.372]	3.280[2.089]	2.822[1.179]	0.960[0.670]			
		F, n=5	1.286[0.260]	3.118[1.232]	3.896[2.226]	0.720[0.163]			
TPO (pg/mL)		M, n=11	94.155[5.821]	97.658[3.387]	101.340[5.207]	95.152[3.613]			
		F, n=20	92.113[3.408]	94.344[3.470]	98.447[3.501]	98.765[3.479]			

**Table S2: 14-day water-only fasting**

Index	Gender	Mean [SEM]					Adjusted <i>P</i> -value vs wFD1				
		wFD1	wFD4	wFD7	wFD14	rFD7	wFD4	wFD7	wFD14	rFD7	
TG (mmol/L)	Normal	M, n=1	0.870	1.460	1.300	1.250	0.920				
		F, n=2	1.015[0.095]	1.160[0.160]	1.145[0.055]	1.085[0.245]	1.315[0.315]				
	High	M, n=2	4.740[1.600]	2.145[0.085]	1.565[0.105]	1.385[0.005]	1.590[0.570]				
		F, n=1	1.750	1.250	1.010	0.990	1.050				
TC (mmol/L)	Normal	M, n=1	4.270	4.940	4.880	5.150	3.810				
		F, n=2	4.725[0.145]	5.070[0.320]	5.170[0.290]	5.010[0.130]	3.785[0.085]				
	High	M, n=2	5.720[0.320]	7.045[0.095]	5.985[1.105]	5.900[0.450]	4.305[0.165]				
		F, n=1	5.410	6.200	4.880	7.290	4.850				
LDL-C (mmol/L)	Normal	M, n=3	2.600[0.411]	4.263[0.582]	4.810[0.360]	4.063[0.261]	2.500[0.121]	<i>P</i> =0.07200000	<i>P</i> =0.02800000	<i>P</i> =0.08666667	<i>P</i> =0.99900000
		F, n=2	2.770[0.070]	3.240[0.070]	3.935[0.175]	3.555[0.295]	2.335[0.165]				
	High	M, n=2	3.37	4.13	5.09	5.32	2.94				
		F, n=1									
HDL-C (mmol/L)	Normal	F, n=2	1.310[0.230]	1.315[0.305]	1.245[0.355]	1.105[0.265]	1.030[0.140]				
	Low	M, n=2	0.940[0.050]	1.020[0.120]	0.875[0.035]	0.865[0.085]	0.870[0.030]				
APTT (second)	M, n=2	28.400[0.500]	27.350[1.350]	26.300[2.000]	27.350[1.350]	30.900[0.800]					
	F, n=3	31.967[2.578]	31.333[0.203]	30.333[2.134]	31.333[0.203]	31.500[1.531]					
PT (second)	M, n=2	10.000[0.500]	10.200[0.100]	11.050[0.250]	11.400[0.100]	10.900[0.200]					
	F, n=3	10.433[0.203]	11.200[0.200]	10.967[0.524]	10.933[0.437]	10.400[0.404]					
INR (ratio value)	M, n=2	0.865[0.045]	0.880[0.010]	0.950[0.020]	0.980[0.010]	0.940[0.020]					
	F, n=3	0.900[0.017]	0.967[0.017]	0.943[0.044]	0.943[0.038]	0.900[0.035]					
TT (second)	M, n=2	18.450[0.650]	18.550[0.950]	18.300[0.800]	19.150[1.850]	18.550[0.350]					
	F, n=3	18.000[0.569]	18.133[0.467]	18.833[0.694]	20.000[0.557]	18.233[0.219]					
AT III (%)	M, n=2	101.000[5.200]	95.400[0.200]	95.550[2.750]	88.700[4.800]	94.950[3.050]					
	F, n=3	105.467[5.751]	95.833[2.826]	97.100[1.747]	95.633[2.069]	94.500[2.307]					
FIB (g/L)	M, n=2	2.430[0.430]	2.490[0.600]	2.445[0.745]	2.545[1.055]	2.350[0.730]					
	F, n=3	2.713 [0.269]	2.643[0.274]	2.503[0.422]	2.177[0.398]	2.337[0.374]					

Ca <sup>2+</sup> (mmol/L)		M, n=3	2.360[0.035]	2.393[0.015]	2.370[0.045]	2.440[0.087]	2.367[0.122]
		F, n=4	2.340 [0.017]	2.370[0.015]	2.370[0.047]	2.468[0.027]	2.350[0.069]
Peripheral resistance (s * mmHg/mL)		M, n=3	1.330[0.071]	1.340[0.012]	1.293[0.007]	1.293[0.082]	1.120[0.144]
		F, n=3	1.320[0.091]	1.173[0.079]	1.163[0.125]	1.190[0.087]	1.110[0.069]
Reflection coefficient (%)		M, n=3	66.667[2.603]	60.667[1.764]	59.667[5.207]	57.333[3.712]	63.000[3.000]
		F, n=3	65.333[3.383]	71.333[5.897]	56.333[2.848]	61.667[6.173]	53.000[5.859]
Alx (%)		M, n=3	24.667[8.413]	23.667[2.333]	22.667[5.364]	23.667[3.383]	8.333[8.876]
		F, n=3	37.333[3.283]	31.333[3.930]	23.667[5.812]	25.333[10.477]	20.000[4.619]
PWV (m/s)		M, n=3	6.767[0.819]	6.567[0.762]	6.667[0.593]	6.367[0.669]	6.533[0.664]
		F, n=3	6.067[0.601]	5.833[0.491]	6.100[0.379]	6.000[0.462]	5.667[0.664]
Stroke volume (mL)		M, n=3	58.050[6.007]	52.333[3.784]	55.980[1.766]	51.853[1.050]	78.123[11.174]
		F, n=3	51.477[4.257]	53.557[3.789]	56.687[5.594]	50.810[3.366]	55.790[7.899]
Cardiac output (L/min)		M, n=3	4.633[0.463]	4.400[0.379]	4.567[0.203]	4.367[0.088]	5.267[0.546]
		F, n=3	4.100[0.231]	4.333[0.176]	4.567[0.285]	4.467[0.371]	4.267[0.318]
Cardiac index (L/min*1/m <sup>2</sup> )		M, n=3	2.333[0.133]	2.200[0.115]	2.333[0.067]	2.333[0.186]	2.767[0.406]
		F, n=3	2.333[0.167]	2.467[0.133]	2.733[0.233]	2.700[0.200]	2.533[0.186]
PLT (10 <sup>9</sup> /L)		Normal					
		M, n=3	145.556[27.315]	32.963[22.556]	96.296[15.835]	118.148[19.890]	2.963[19.398]
		F, n=3	175.185[64.891]	82.593[21.328]	184.815[27.007]	110.741[35.926]	100.741[5.821]
		Low					
		F, n=1	93.333	143.333	140.000	110.000	90.000
PCT (%)		M, n=3	0.120[0.021]	0.113[0.022]	0.083[0.015]	0.097[0.015]	0.080[0.015]
		F, n=3	0.153[0.055]	0.150[0.017]	0.157[0.026]	0.093[0.030]	0.083[0.007]
MPV (fL)		M, n=3	9.267[0.348]	9.367[0.176]	9.767[0.291]	9.367[0.338]	9.733[0.318]
		F, n=3	9.867[0.291]	9.200[0.153]	9.300[0.300]	9.533[0.521]	9.467[0.348]
PDW (%)		M, n=3	44.567[2.490]	49.367[1.910]	53.833[0.393]	44.767[3.557]	53.867[0.533]
		F, n=3	51.867[6.313]	46.200[1.102]	47.833[0.467]	53.133[3.263]	51.533[1.288]
Aggregation (%)		M, n=3	69.000[3.512]	65.667[10.333]	65.000[0.000]	74.000[9.452]	84.333[2.333]
		F, n=4	81.750[4.308]	87.500[4.573]	86.000[4.000]	66.000[5.196]	69.250[14.705]

P-selectin (ng/mL)		M, n=3	12.567[1.093]	11.353[0.551]	9.183[2.042]	7.833[0.188]	7.380[0.966]
		F, n=4	11.963[0.851]	11.865[1.334]	9.230[0.873]	10.463[0.873]	8.038[1.236]
ROS (MFI)		M, n=3	16.315[0.175]	16.537[1.502]	10.600[1.265]	7.560[0.770]	16.100[1.473]
		F, n=4	16.730[0.000]	15.428[1.382]	10.198[0.728]	8.135[0.825]	18.073[1.999]
JC-1 (%)		M, n=5	54.145[0.495]	21.553[1.575]	32.240[10.423]	39.673[3.753]	60.943[8.180]
		F, n=5	52.460[0.000]	7.960[0.447]	18.430[2.585]	24.437[6.111]	73.078[7.130]
Annexin V (%)		M, n=5	3.040[0.990]	9.580[7.790]	0.923[0.245]	1.450 [0.000]	10.283[5.460]
		F, n=5	0.770[0.000]	1.550[0.200]	3.547[2.647]	3.415[3.115]	7.627[6.172]
TPO (pg/mL)		M, n=3	97.817[3.070]	101.037[4.068]	102.387[5.432]	105.203 [9.685]	107.360[9.660]
		F, n=4	84.055[3.077]	87.220[6.519]	92.620[9.515]	80.520[1.359]	103.363[7.226]

**Table S3. Additional information about reagents and resources used in this study**

REAGENT or RESOURCE	SOURCE	IDENTIFIER
<b>Antibodies</b>		
FITC Annexin V	BD Biosciences	556419
JC-1	Beyotime	c2005
CM-H2DCFDA	Thermo Fisher Scientific	c6827
PE Mouse Anti-Human CD41a	BD Biosciences	555467
<b>Chemicals</b>		
Prostaglandin E1	ENZO	745-65-3
Thrombin	CHRONO-LOG	386
0.1% saponin	Sigma	47036
Siemens coagulation reagent (PT)	Siemens	565619
Siemens coagulation reagent (APTT)	Siemens	556964
Siemens coagulation reagent (TT)	Siemens	49130
Siemens coagulation reagent (FIB)	Siemens	547598A
Siemens coagulation reagent (AT3)	Siemens	49251
<b>Critical Commercial Assays</b>		
Human P-Selectin ELISA Kit	Affandi	A097104
Human Thrombopoietin, TPO ELISA Kit	Affandi	A099685
<b>Software</b>		
GraphPad Prism 8.0		
IBM SPSS Statistics 22.0		
<b>Other</b>		
Automatic Five Categories Hematology Analyzer	Germany Siemens	Advia2120i
Dual-channel platelet aggregation apparatus	CHRONO-LOG	Chrono Log 560Ca
Flow cytometer	Backman	Gallios
upper arm blood pressure monitor	OMRON	U19
Mobil-O-Graph PWA	IEM	Mobil-O-Graph PWA

---

---

**Other**

---

---

Automatic coagulation analyzer	Sysmex	cs-2000i
Blood biochemical analyzer	Cobas	c702
Microplate reader	Labsystems Multiskan MS	352
Washing Machine	Thermo Labsystems	AC8
Cuvettes, 450 $\mu$ L	CHRONO-LOG	312
Disposable stir bars for P/N	CHRONO-LOG	311

---

---