

## Supporting figures and tables for:

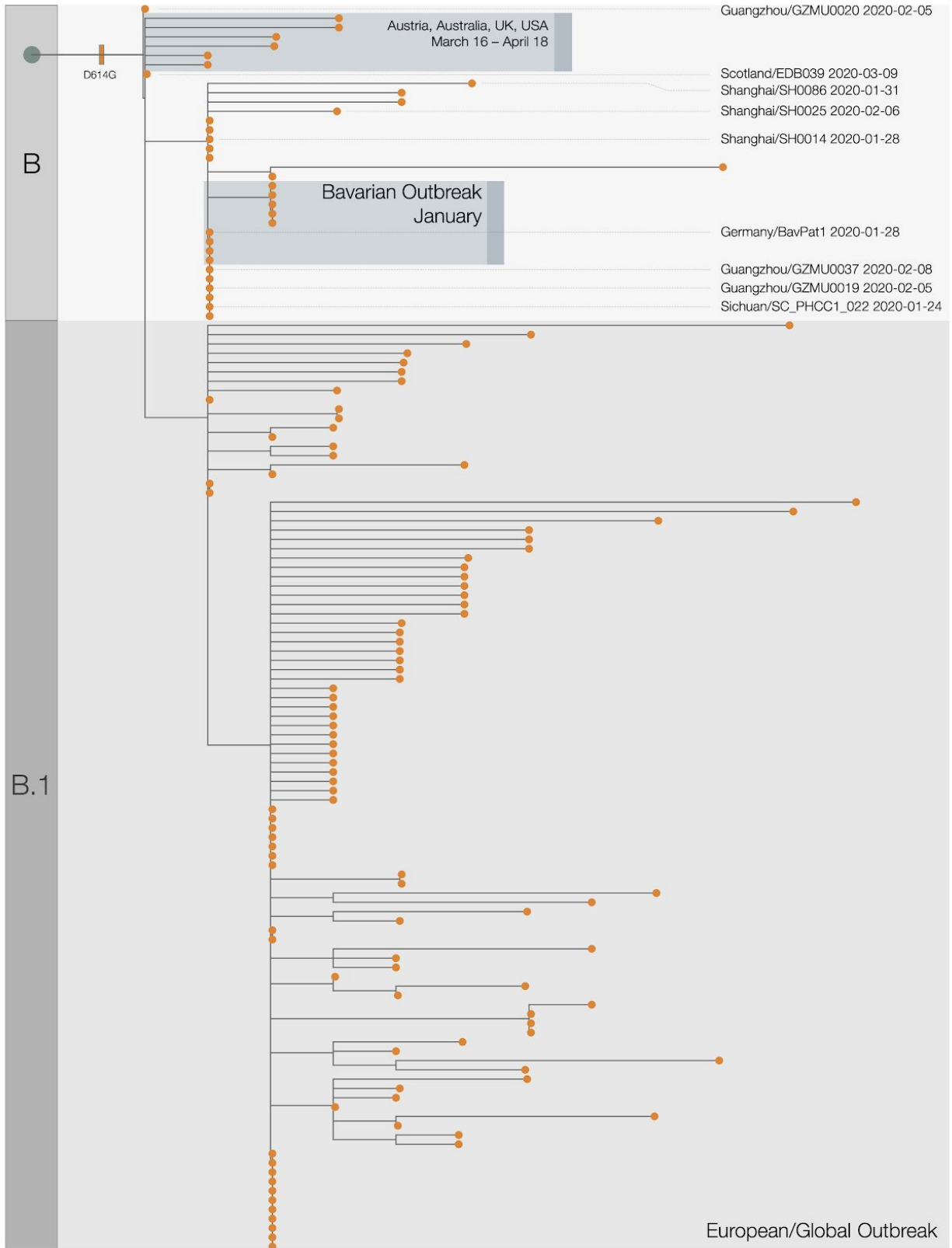
### Evaluating the effects of SARS-CoV-2 Spike mutation D614G on transmissibility and pathogenicity

Erik M. Volz<sup>1\*</sup>, Verity Hill<sup>2</sup>, JT McCrone<sup>2</sup>, Anna Price<sup>3</sup>, David Jorgensen<sup>1</sup>, Áine O'Toole<sup>2</sup>, Joel Southgate<sup>3</sup>, Robert Johnson<sup>1</sup>, Ben Jackson<sup>2</sup>, Fabricia F. Nascimento<sup>1</sup>, Sara M. Rey<sup>4</sup>, Samuel M. Nicholls<sup>5</sup>, Rachel M. Colquhoun<sup>2</sup>, Ana Da Silva Filipe<sup>8</sup>, Nicole Pacchiarini<sup>4</sup>, Matthew Bull<sup>4</sup>, Lily Geidelberg<sup>1</sup>, Igor Siveroni<sup>1</sup>, Ian G. Goodfellow<sup>6</sup>, Nicholas J. Loman<sup>5</sup>, Oliver Pybus<sup>7</sup>, David L. Robertson<sup>8</sup>, Emma C. Thomson<sup>8</sup>, Andrew Rambaut<sup>2\*</sup>, Thomas R. Connor<sup>3,4,9\*</sup>

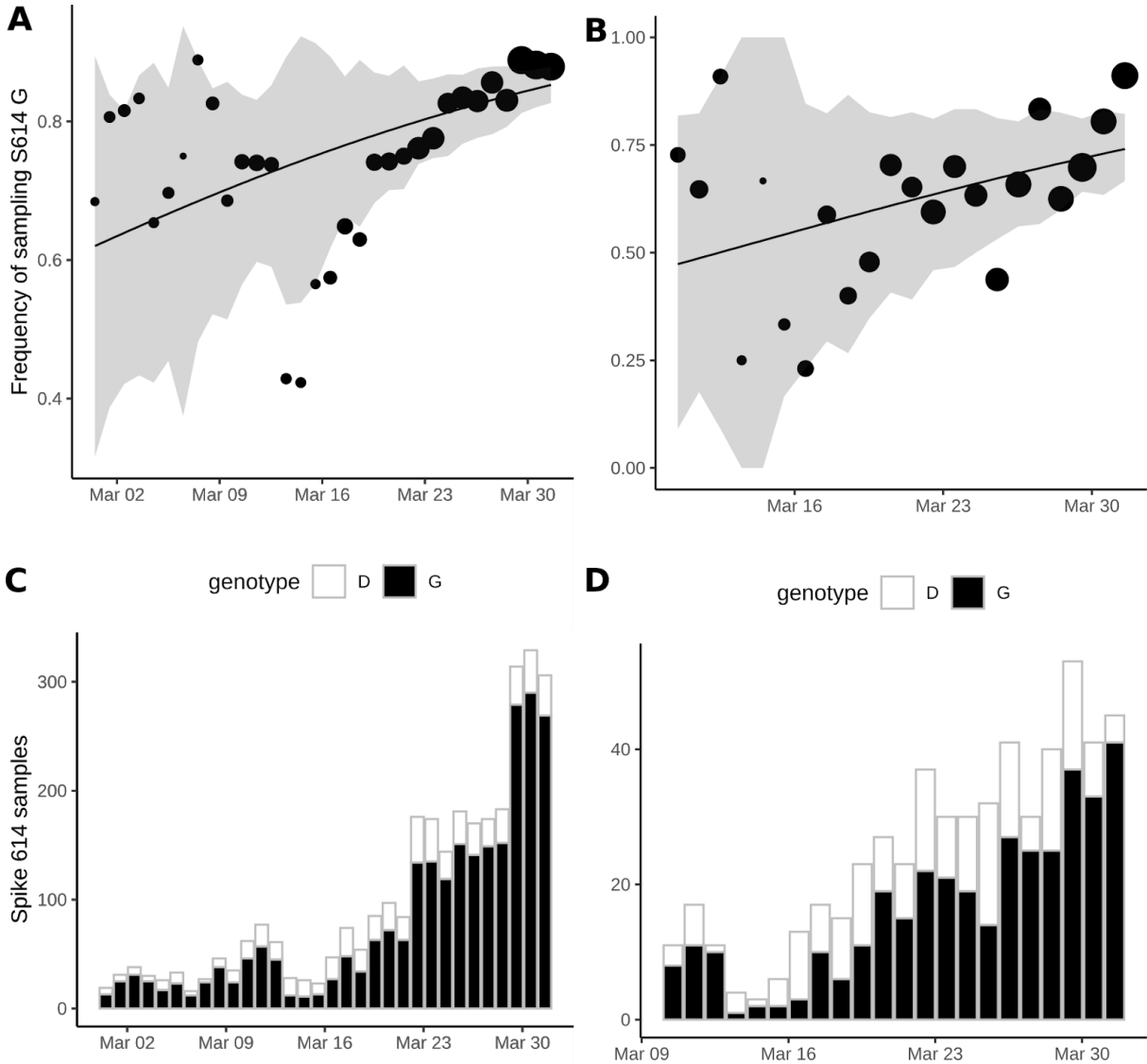
on behalf of the CoG-UK consortium<sup>10</sup>

1. Department of Infectious Disease Epidemiology and MRC Centre for Global Infectious Disease Analysis, Imperial College London
2. Institute of Evolutionary Biology, University of Edinburgh
3. School of Biosciences, Cardiff University
4. Pathogen Genomics Unit, Public Health Wales NHS Trust
5. Institute of Microbiology and Infection, University of Birmingham
6. Department of Pathology, University of Cambridge
7. Department of Zoology, University of Oxford
8. MRC-University of Glasgow Centre for Virus Research
9. Quadram Institute Bioscience
10. <https://www.cogconsortium.uk/>

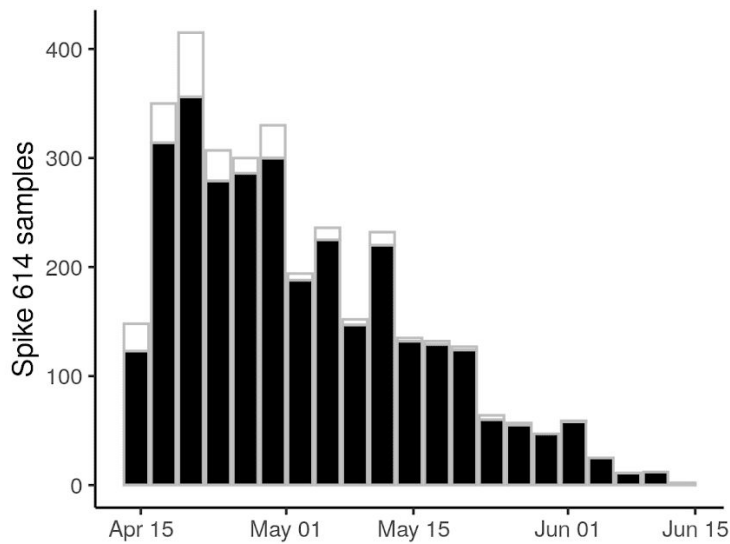
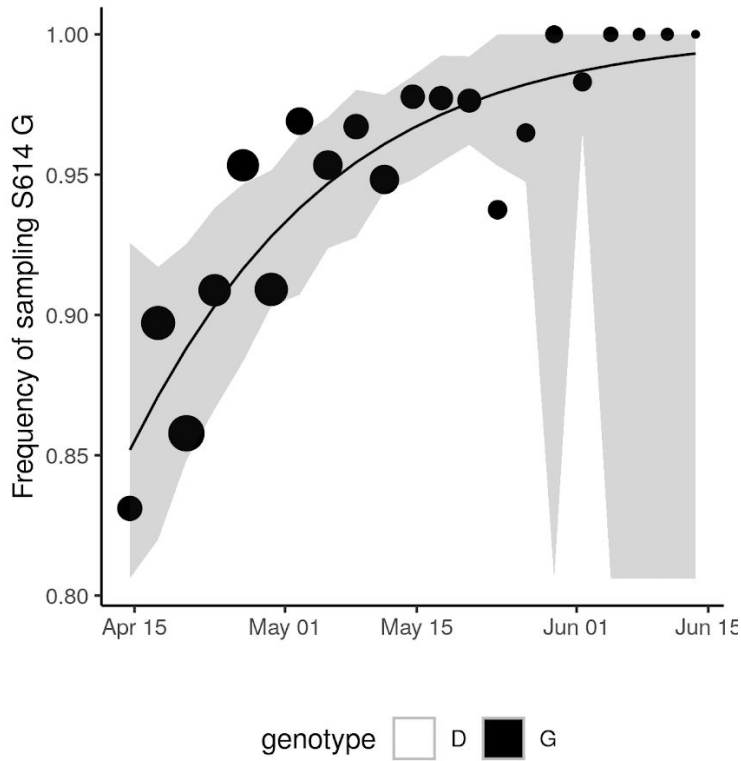
\* Correspondence should be addressed to: [e.volz@imperial.ac.uk](mailto:e.volz@imperial.ac.uk), [a.rambaut@ed.ac.uk](mailto:a.rambaut@ed.ac.uk) and [ConnorTR@cardiff.ac.uk](mailto:ConnorTR@cardiff.ac.uk)



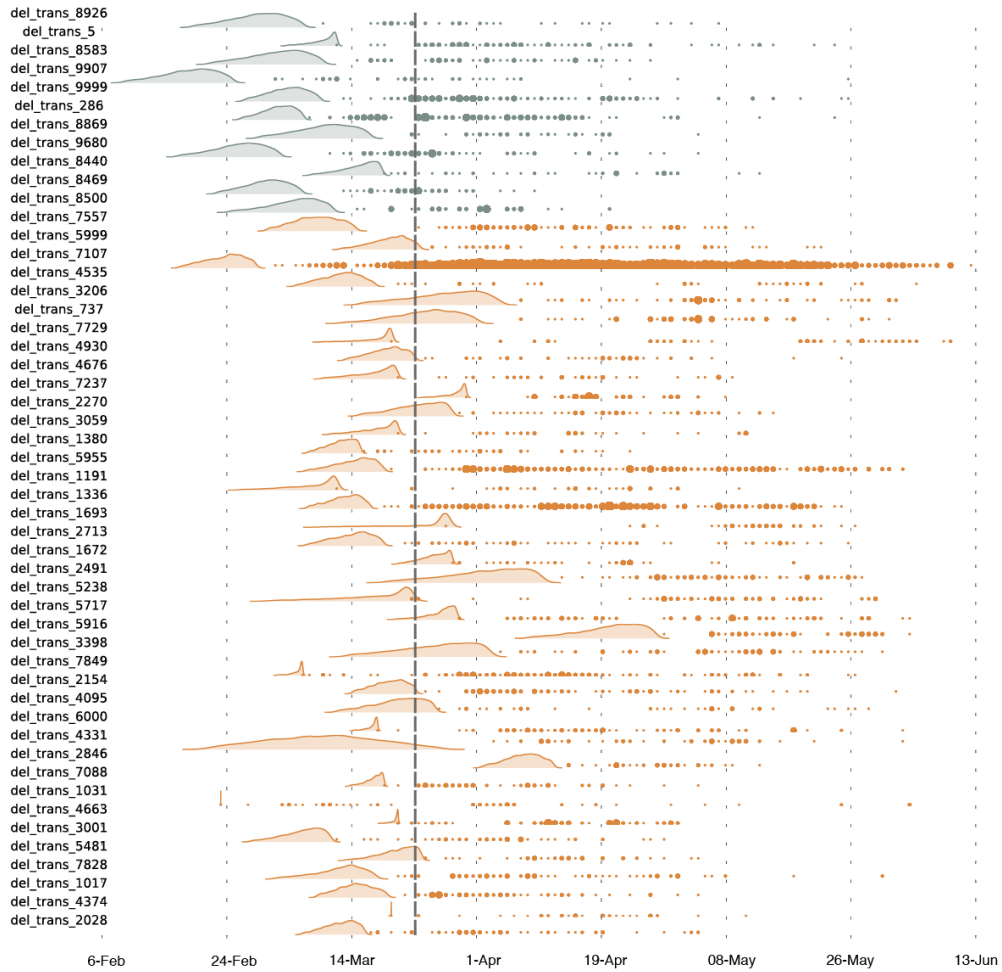
**Figure S1** | Expanded phylogenetic tree showing the early stages of emergence of D614G into Europe from China. Acknowledgments and details for highlighted genome sequences are given in Table S2.



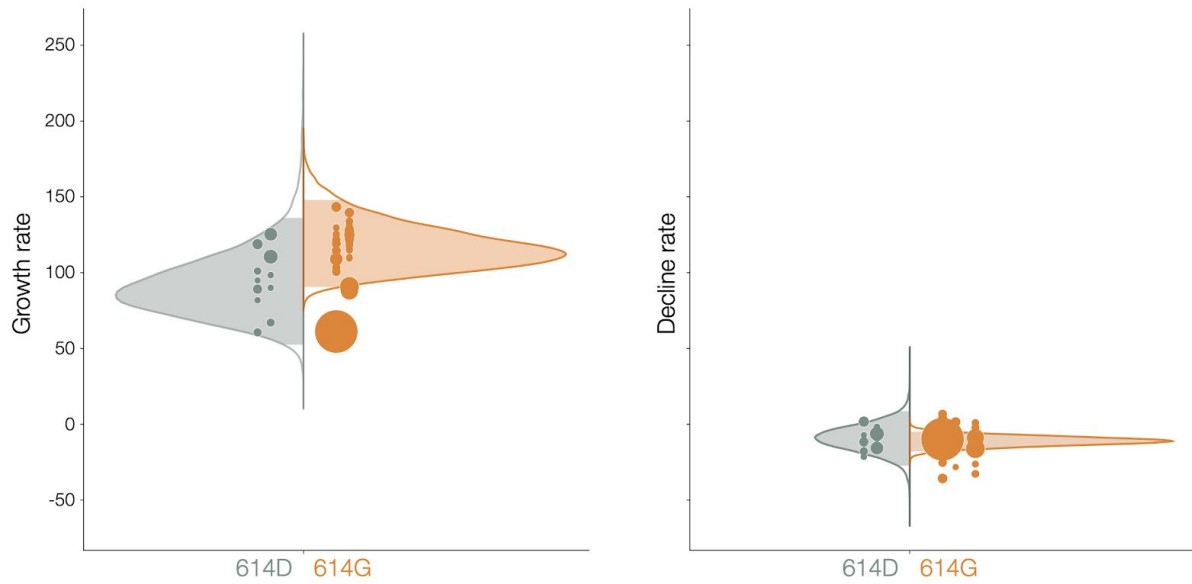
**Figure S2:** Frequency of sampling Spike 614G over time and numbers of Spike 614G and Spike 614D samples over time. Panels A and C show samples derived from accelerated transition clusters and panels B and D show samples derived from delayed transition clusters. The size of points represents the number of samples collected on each day. The line and shaded region showed the MLE and confidence interval fit of the logistic growth model.



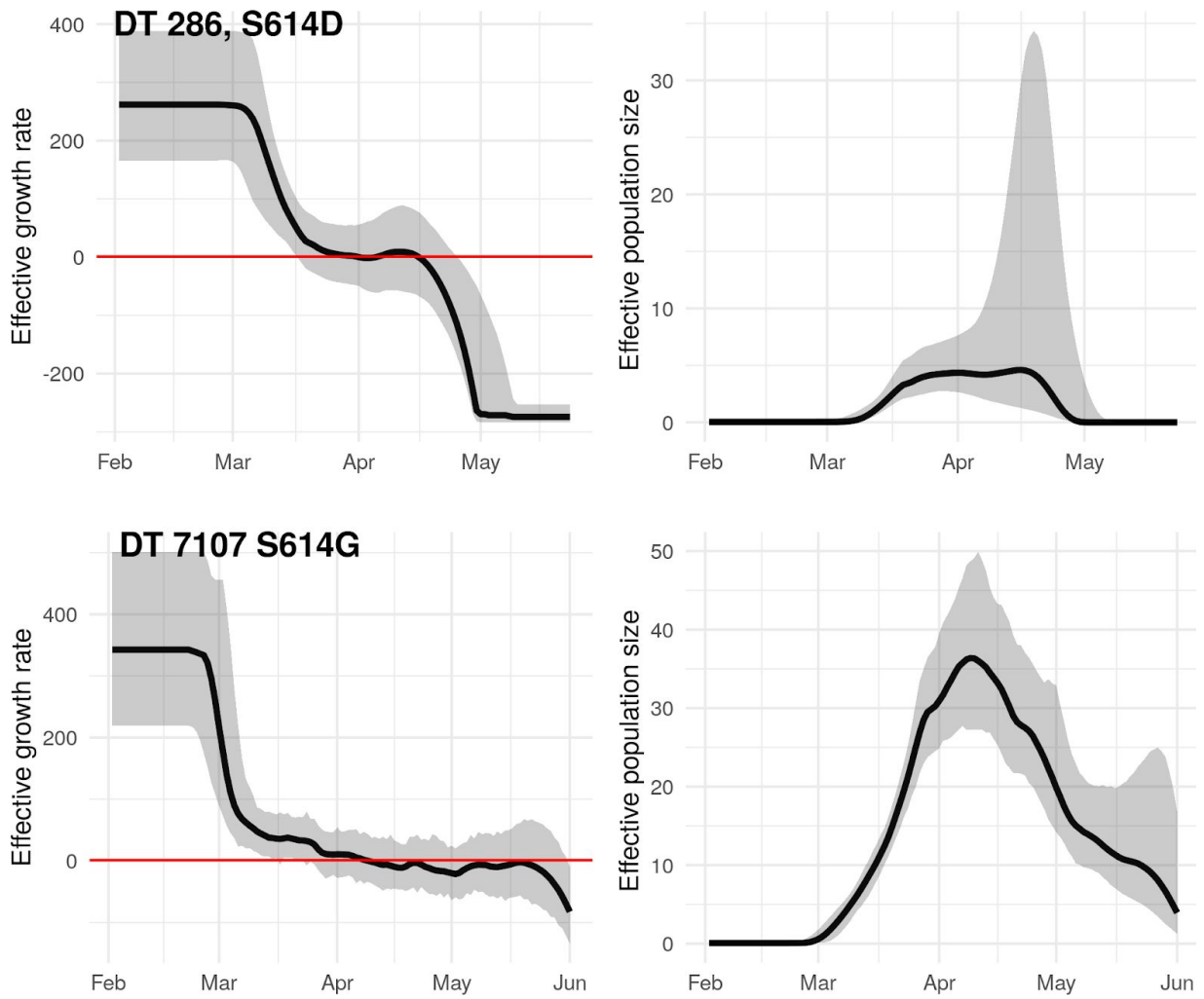
**Figure S3:** Frequency of sampling Spike 614G after April 15 and numbers of Spike 614G and Spike 614D samples over time using 37 DT clusters detected before March 31, 2020. The size of points represents the number of samples collected on each day. The line and shaded region showed the MLE and confidence interval fit of the logistic growth model.



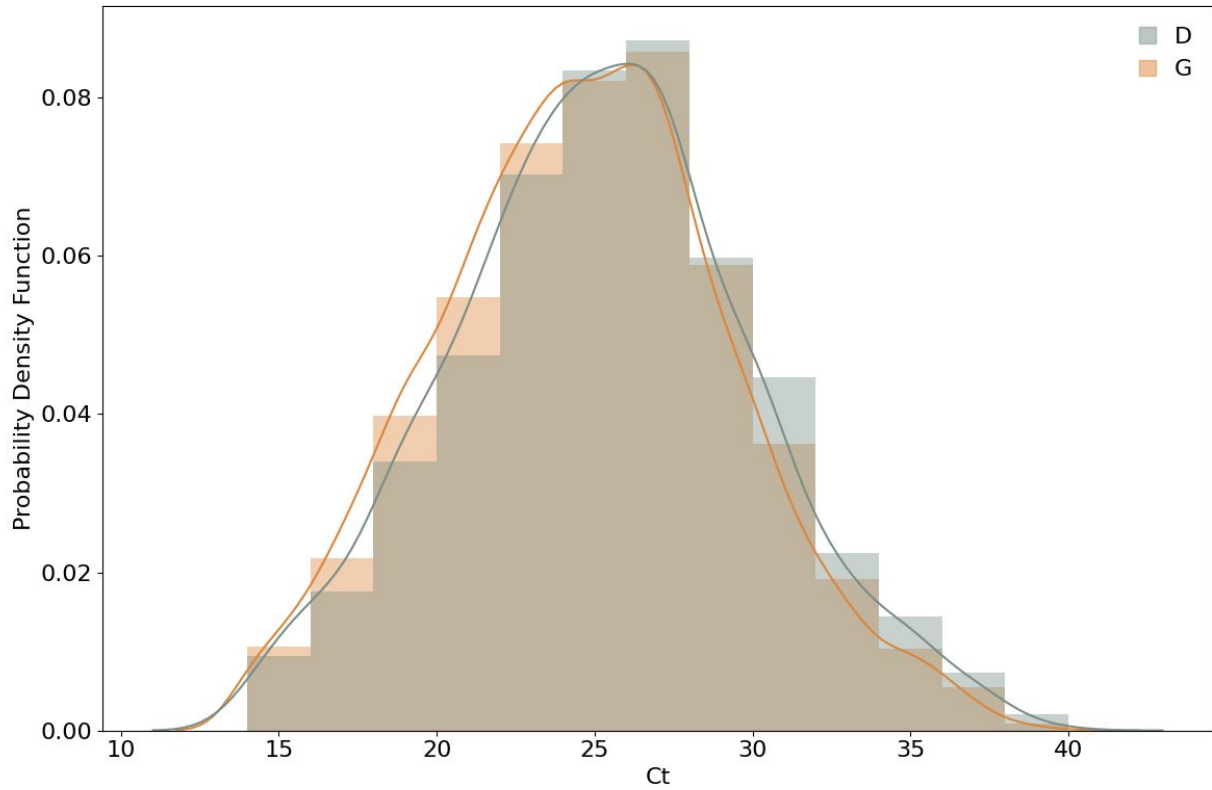
**Figure S4:** The estimated TMRCA for each of 50 UK clusters (shaded density) and time of each sequence sampled (points). Brown and grey respectively indicate Spike 614G and 614D clusters.



**Figure S5:** Distribution of exponential growth rates (left) and rates of decline(right) for Spike 614G (brown) and 614D (grey) in units of 1/year. Solid areas span the 95% credible interval. Points indicate the rates estimated for specific clusters, and are sized by the number of sequences in that cluster.

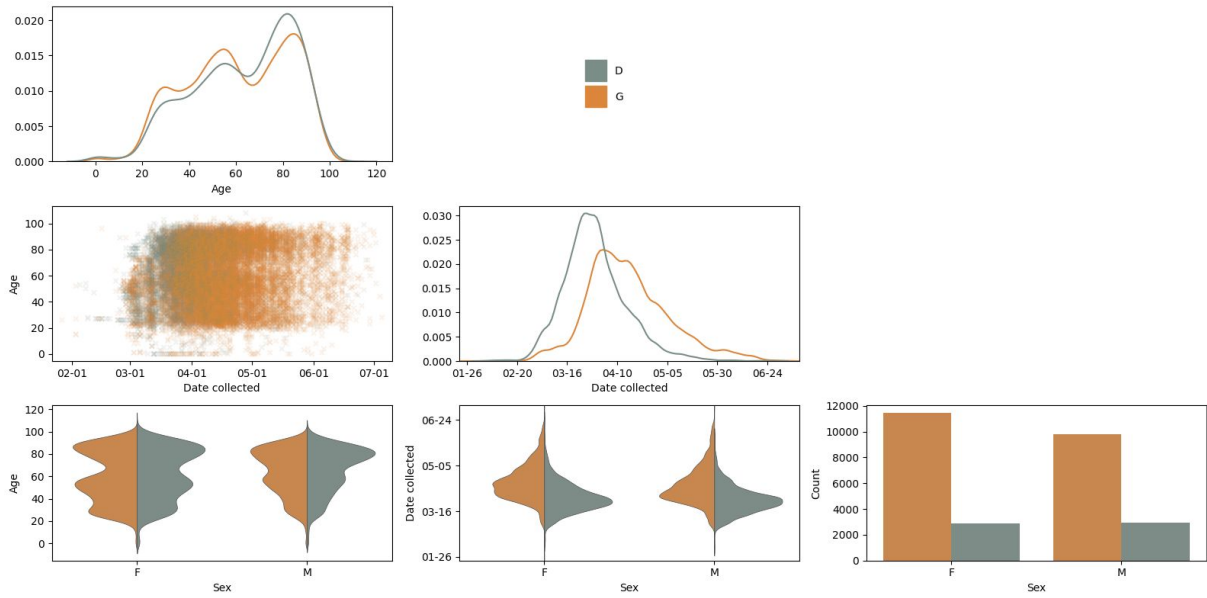


**Figure S6:** Estimated growth rates (left) and effective population size (right) for the two largest clusters with genotypes Spike 614D/G. The growth rate at the beginning of the time axis (Feb 1, 2020) provides a data point for the statistical comparisons between clusters.



**Figure S7.** Frequency histograms of PCR cycle threshold (Ct) for D/G variants overlaid with kernel density estimates. Samples where the amino acid at position 614 was not recorded and samples with a Ct value of less than 14 or greater than 40 were excluded.





**Figure S8:** Probability of observing Spike 614G virus in patients grouped by age and sex. Collected pairwise plots are based on a UK-wide (England, Wales, Scotland, and Northern Ireland) multivariate dataset for the sample collection date, and the age and sex of the patient. Kernel Density Estimation (KDE) and count plots are on the diagonal.

<b>Parameter</b>	<b>Prior distribution</b>	<b>Shape parameters</b>
Kappa (HKY)	Lognormal	Mu = 1.0 Sigma=1.25
Population size (for each lineage)	Lognormal	Mean = 1.0 Stdev = 1.5
Hyperprior for mean growth and decline rate	Normal	Mean = 0 Stdev = 100
Hyperprior for precision of growth and decline rate	Gamma	Shape = 1 Scale = 0.001
Transition time	Normal	Mean = 2020.2254 in node height of the individual cluster tree Stdev = 0.034

**Table S1** Prior distributions used in the BEAST analysis (see Main text).

Name	GISAID ID	Date	Laboratories	Authors
Sichuan/SC-PHCC1-022	EPI_ISL_451345	2020-01-24	West China Hospital of Sichuan University / State Key Laboratory of Biotherapy of Sichuan University	Baowen Du, Minjin Wang, Chao Tang, Chuan Chen, Yongzhao Zhou, Mingxia Yu, Hancheng Wei, Weimin Li, Jing-wen Lin, Jia Geng, Binwu Ying, Lu Chen
Shanghai/SH0014	EPI_ISL_416327	2020-01-28	Shanghai Public Health Clinical Center, Shanghai Medical College, Fudan University / National Research Center for Translational Medicine (Shanghai), Ruijin Hospital affiliated to Shanghai Jiao Tong University School of Medicine & Shanghai Public Health Clinical Center	Shengyue Wang, Xiaonan Zhang, Gang Lu, Yun Tan, Yun Ling, Hongzhou Lu, Saijuan Chen
Shanghai/SH0086	EPI_ISL_416386	2020-01-31	Shanghai Public Health Clinical Center, Shanghai Medical College, Fudan University / National Research Center for Translational Medicine (Shanghai), Ruijin Hospital affiliated to Shanghai Jiao Tong University School of Medicine & Shanghai Public Health Clinical Center	Shengyue Wang, Xiaonan Zhang, Gang Lu, Yun Tan, Yun Ling, Hongzhou Lu, Saijuan Chen
Shanghai/SH0025	EPI_ISL_416334	2020-02-06	Shanghai Public Health Clinical Center, Shanghai Medical College, Fudan University / National Research Center for Translational Medicine (Shanghai), Ruijin Hospital affiliated to Shanghai Jiao Tong University School of Medicine & Shanghai Public Health Clinical Center	Shengyue Wang, Xiaonan Zhang, Gang Lu, Yun Tan, Yun Ling, Hongzhou Lu, Saijuan Chen
Guangzhou/GZMU0019	EPI_ISL_429080	2020-02-05	The First Affiliated Hospital of Guangzhou Medical University	Yanqun Wang, Daxi Wang, Lu Zhang, Wanying Sun, Zhaoyong Zhang et al.
Guangzhou/GZMU0037	EPI_ISL_429089	2020-02-08	The First Affiliated Hospital of Guangzhou Medical University	Yanqun Wang, Daxi Wang, Lu Zhang, Wanying Sun, Zhaoyong Zhang et al.
Guangzhou/GZMU0020	EPI_ISL_429081	2020-02-05	The First Affiliated Hospital of Guangzhou Medical University	Yanqun Wang, Daxi Wang, Lu Zhang, Wanying Sun, Zhaoyong Zhang et al.

---

Germany/BavPat1	EPI_ISL_406862	2020-01-28	Charité Universitätsmedizin Berlin, Institute of Virology; Institut für Mikrobiologie der Bundeswehr, Munich	Victor M Corman, Julia Schneider, Talitha Veith, Barbara Mühlemann, Markus Antwerpen, Christian Drosten, Roman Wölfel
-----------------	----------------	------------	---	--

---

**Table S2** Early D614G viruses in lineage B.