

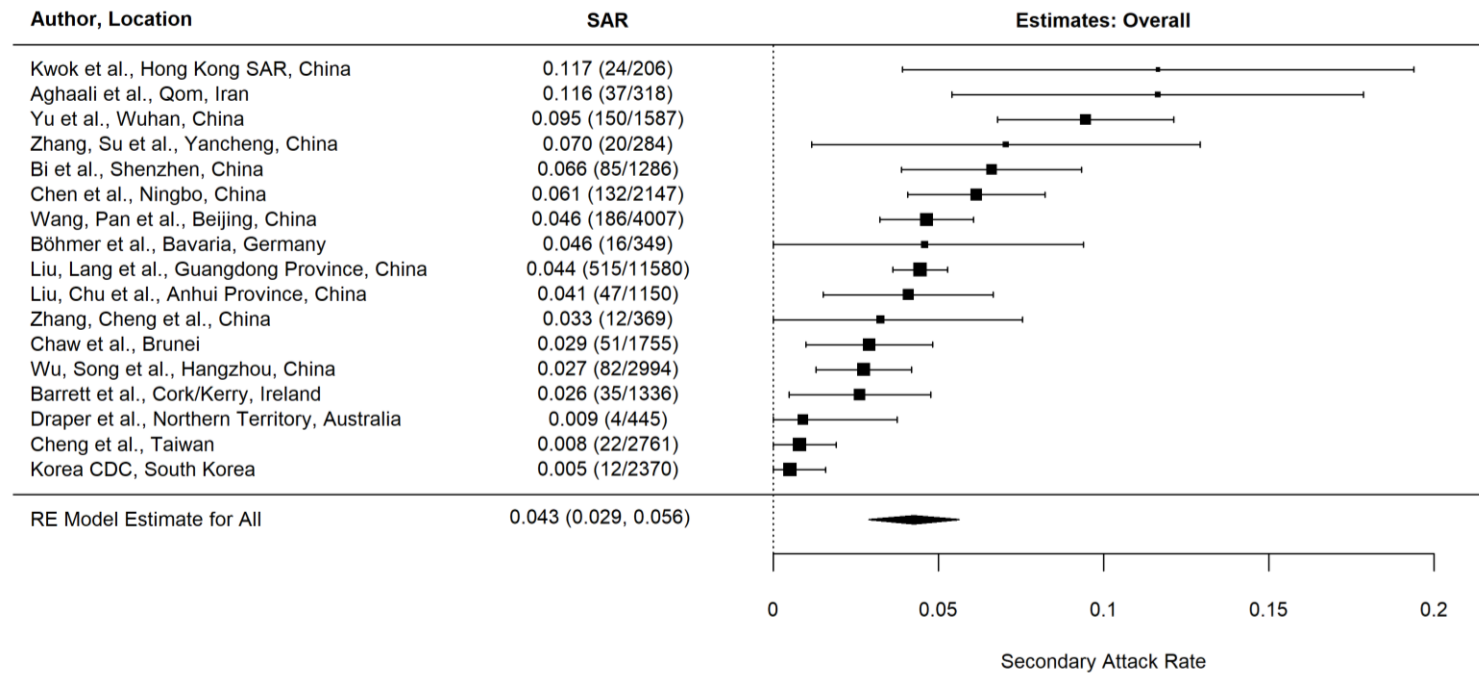
## Appendix to ‘Household transmission of SARS-CoV-2: a systematic review and meta-analysis of secondary attack rate’

Zachary J. Madewell, Yang Yang, Ira M. Longini Jr, M. Elizabeth Halloran, Natalie E. Dean

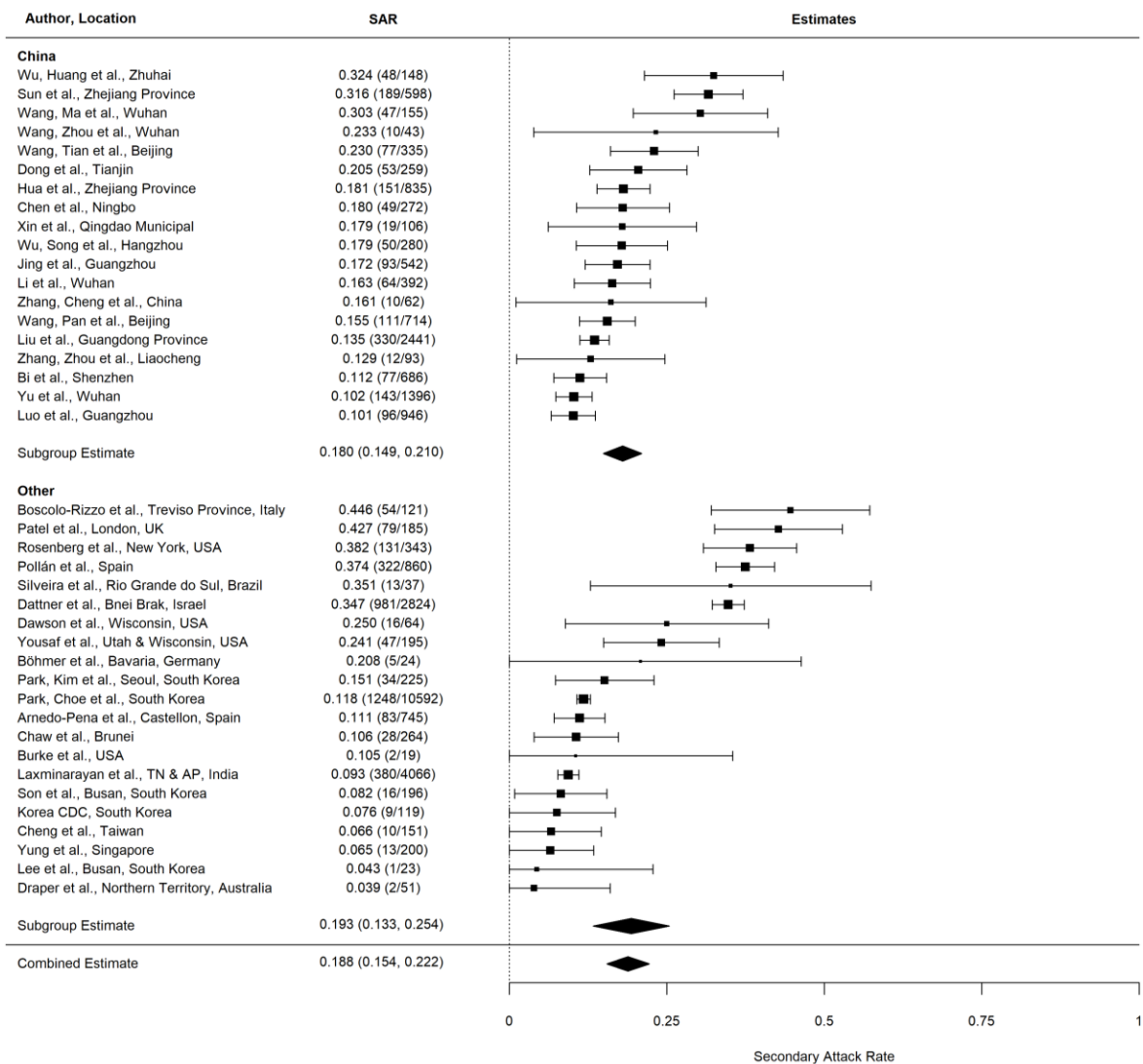
### Table of Contents for Appendix

<b>Contents</b>	<b>Page</b>
S1 Figure. Secondary attack rates for studies of close contacts	2
S2 Figure. Household secondary attack rates, grouped by studies in China vs. other locations	3
S3 Figure. Secondary attack rates grouped by studies that tested only symptomatic household contacts and studies that tested all household contacts irrespective of symptoms	4
S1 Table. Summary of studies for review of household transmissibility of SARS-CoV-2	5
S2 Table. Assessment of factors potentially affecting susceptibility and infectivity in household transmission studies	9
S3 Table. Household secondary attack rate comparison with other viruses	11
S4 Table. Overdispersion of the number of secondary infections per household	13
Supplemental methods	14
References	16

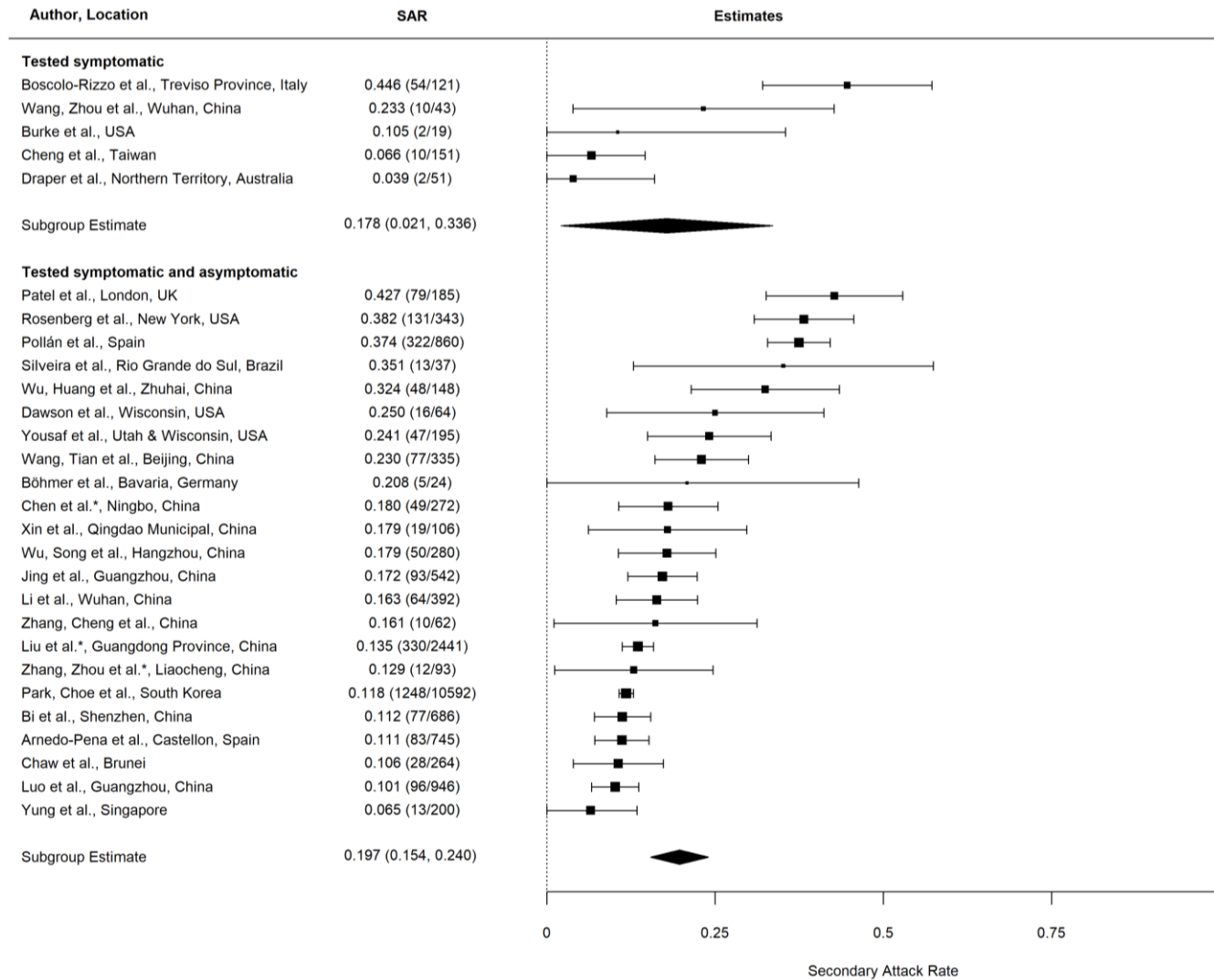
**S1 Figure.** Secondary attack rates (SAR) for studies of close contacts (including individuals outside the index case household). This investigation of SARs of close contacts<sup>1-17</sup> was non-exhaustive, as it was beyond the focus of the review.



**S2 Figure.** Household secondary attack rates, grouped by studies in China vs. other locations



**S3 Figure.** Secondary attack rates (SAR), grouped by studies that tested only symptomatic household contacts and studies that tested all household contacts irrespective of symptoms.



**S1 Table.** Summary of studies for review of household transmissibility of SARS-CoV-2

	<b>Location (city, country)</b>	<b>Index case identification period</b>	<b>Test used to diagnosis contacts</b>	<b>No. index cases</b>	<b>Contact type</b>	<b>Overall household secondary attack rate</b>	<b>Follow up duration (days)</b>	<b>Risk factors examined:</b>
<i>Arnedo-Pena et al.</i> <sup>18</sup>	Castellon, Spain	February 26 to April 8, 2020	Symptom-based diagnosis (no testing of contacts)	347 symptomatic	Household contacts	11.1% (83/745)	–	Contact: age, sex; Index case: age, sex, cough, pneumonia, hospitalization, health profession; Number of household members, urban/rural residence
<i>Bi et al.</i> <sup>5</sup>	Shenzhen, China	January 14 to February 12, 2020	RT-PCR	391 symptomatic or asymptomatic	Household contacts	11.2% (77/686)	14	Contact: sex, age; Index case: age; Contact frequency, shared meal, shared transportation
<i>Böhmer et al.</i> <sup>7</sup>	Bavaria, Germany	January 27 to February 11, 2020	RT-PCR and whole genome sequencing	–	Household contacts	20.8% (5/24)	14	–
<i>Boscolo-Rizzo et al.</i> <sup>19</sup>	Treviso province, Italy	March 19 to March 22, 2020	RT-PCR	179 symptomatic	Household contacts	43% (54/121)	14	–
<i>Burke et al.</i> <sup>20</sup>	USA	January 20 to February 26, 2020	–	10 symptomatic	Household contacts	10.5% (2/19)	14	–
<i>Chaw et al.</i> <sup>16</sup>	Brunei	March 5 to April 4, 2020	RT-PCR	19 symptomatic or asymptomatic	Household contacts	10.6% (28/264)	14	Contact: age, sex; Exposure period
<i>Chen et al.</i> <sup>6</sup>	Ningbo, China	January 21 to March 6, 2020	Nucleic acid test	157 symptomatic or asymptomatic	Family contacts	18.01% (49/272)	21	–
<i>Cheng et al.</i> <sup>14</sup>	Taiwan	January 15 to March 18, 2020	RT-PCR	100 symptomatic or asymptomatic	Household contacts	6.6% (10/151)	14	Contact: age; Index case: age, clinical severity, pneumonia, acute respiratory distress syndrome/sepsis; time from illness onset in index case to contact exposure; presymptomatic exposure
<i>Dattner et al.</i> <sup>21</sup>	Bnei Brak, Israel	May 2, 2020	RT-PCR	637 symptomatic or asymptomatic	Household contacts	34.7% (981/2824)	–	Contact: age
<i>Dawson et al.</i> <sup>22</sup>	Milwaukee County, Wisconsin, USA	March to April, 2020	RT-PCR	26 symptomatic	Household contacts	25.0% (16/64)	–	–
<i>Dong et al.</i> <sup>23</sup>	Tianjin, China	January 7 to February 24, 2020	RT-PCR	135 symptomatic or asymptomatic	Family contacts	20.46% (53/259)	–	–
<i>Draper et al.</i> <sup>15</sup>	Northern Territory, Australia	March 1 and April 30, 2020	RT-PCR	28 symptomatic	Household contacts	3.9% (2/51)	14	–

<i>Hua et al.</i> <sup>24</sup>	Zhejiang Province, China	January 7 to February 29, 2020	RT-PCR	314 symptomatic or asymptomatic	Family contacts	18.1% (151/835)	–	Contact: children/adults
<i>Jing et al.</i> <sup>25</sup>	Guangzhou, China	January 6 to February 17, 2020	RT-PCR or sequencing	349 symptomatic or asymptomatic	Household contacts	17.1% (93/542)	14	Contact: age, sex; Index case: age, sex; Number of people per household
<i>Korea CDC</i> <sup>13</sup>	South Korea	January 24 to March 10, 2020	–	30 symptomatic or asymptomatic	Household contacts	7.56% (9/119)	14	–
<i>Laxminarayan et al.</i> <sup>26</sup>	Tamil Nadu and Andhra Pradesh, India	March 5 to June 4, 2020	RT-PCR	997 symptomatic or asymptomatic	Household contacts	9.0% (380/4066)	14	Index case: sex
<i>Lee et al.</i> <sup>27</sup>	Busan, South Korea	February 21 to March 13, 2020	RT-PCR	10 asymptomatic or presymptomatic	Household contacts	4.3% (1/23)	–	–
<i>Li et al.</i> <sup>28</sup>	Wuhan, China	January 1 to February 20, 2020	RT-PCR	105 symptomatic	Household contacts	16.3% (64/392)	14	Contact: age, sex, relationship, exposure period; Index case: Quarantine at initiation of symptom, fever, cough
<i>Liu et al.</i> <sup>9</sup>	Guangdong Province, China	January 10 to March 15, 2020	RT-PCR	1,158 symptomatic	Family members	13.5% (330/2441)	14	Contact: Age, sex, relationship; Index case: Disease history, clinical severity, dyspnea, dizzy, myalgia, shortness of breath, chill, headache, fatigue, fever, nasal congestion, pharyngalgia, cough, diarrhea, arthralgia, rhinorrhea, vomit, expectoration, chest tightness, palpitation, nausea, poor appetite, abdominal pain, chest pain; Shared transportation
<i>Luo et al.</i> <sup>29</sup>	Guangzhou, China	January 13 to March 6, 2020	RT-PCR	69 symptomatic or asymptomatic	Household contacts	10.2% (96/946)	14	Contact: age, sex; Index case: Clinical severity, fever, cough, expectoration, fatigue, myalgia Shared vehicle
<i>Park, Choe et al.</i> <sup>30</sup>	South Korea	January 20 to March 27, 2020	RT-PCR	5,706 symptomatic or asymptomatic	Household contacts	11.8% (1,248/10,592)	14	–
<i>Park, Kim et al.</i> <sup>31</sup>	Seoul, South Korea	February 21 to March 8, 2020	RT-PCR	97 symptomatic or asymptomatic	Household contacts	15.1% (34/225)	14	–
<i>Patel et al.</i> <sup>32</sup>	London, UK	March 1 to April 1, 2020	COVID-19 symptoms (no testing)	141 symptomatic	Household contacts	43% (79/185)	–	–
<i>Pollán et al.</i> <sup>33</sup>	Spain	April 27 to May 11, 2020	Immunoassay antibody test	–	Household contacts	37.4% (322/860)	–	–
<i>Rosenberg et al.</i> <sup>34</sup>	New York, USA	March 2 to March 12	Molecular SARS-CoV-2 tests	229 symptomatic or asymptomatic	Household contacts	38% (131/343)	–	Contact: age; Number of people in household

<i>Silveira et al.</i> <sup>35</sup>	Rio Grande do Sul, Brazil	April 10–12 and 25–27	Wondfo Antibody Test	18 symptomatic or asymptomatic	Household contacts	35.1% (13/37)	–	–
<i>Son et al.</i> <sup>36</sup>	Busan, South Korea	January 16 to March 24, 2020	RT-PCR	108 symptomatic or asymptomatic	Household contacts	8.2% (16/196)	–	–
<i>Sun et al.</i> <sup>37</sup>	Zhejiang Province, China	January 20 to February 10, 2020	–	148 symptomatic or asymptomatic	Household contacts	31.61% (189/598)	–	Contact: age, sex, relationship
<i>Xin et al.</i> <sup>38</sup>	Qingdao Municipal, China	January 20 to March 27, 2020	RT-PCR	31 symptomatic or asymptomatic	Household contacts	17.9% (19/106)	14	Contact: sex, age, effective contact days, relationship, contact frequency Index case: sex, age, underlying diseases, fever, cough, myalgia, fatigue, time from illness onset to hospital admission, time from illness onset to lab confirmation, disease severity, white blood cell count, lymphocyte count, neutrophil percentage, lymphocyte percentage
<i>Wang, Ma et al.</i> <sup>39</sup>	Wuhan, China	February 13 and February 14, 2020	RT-PCR	85 symptomatic	Household contacts	30% (47/155)	14	–
<i>Wang, Pan et al.</i> <sup>17</sup>	Beijing, China	January 1 to April 3, 2020	RT-PCR, gene sequencing	585 symptomatic or asymptomatic	Household contacts	15.6% (111/714)	14	–
<i>Wang, Tian et al.</i> <sup>40</sup>	Beijing, China	February 21, 2020	RT-PCR, gene sequencing	41 symptomatic	Household contacts	23.0% (77/335)	14	Index case: age, sex, education, clinical severity, fever, diarrhea, comorbidity; Time interval from illness onset to first hospital visit, time interval from illness onset to medical isolation, time interval from illness onset to laboratory confirmation, knowledge score on COVID-19 before illness onset, self-awareness of being infected with SARS-CoV-2 when developed illness, knowledge of own infectiousness after illness onset, wear mask at home after illness onset, self-isolated after illness onset, eat separately at home after illness onset, eat with separate tableware, score on hand hygiene; family size, close contact with primary cases at home (no. times), no. family members wearing mask at home before primary case's illness onset date, no. family members wearing mask at home after primary case's illness onset date, residential area per person, number of bedrooms per person, number of washrooms, frequency of room cleaning, frequency of disinfectant use, ventilation duration

<i>Wang, Zhou et al.</i> <sup>41</sup>	Wuhan, China	January 5 to 12 February, 2020	Nucleotide tests	25 symptomatic	Family contacts	23.3% (10/43)	–	–
<i>Wu, Huang et al.</i> <sup>42</sup>	Zhuhai, China	January 17 to February 29, 2020	RT-PCR	35 symptomatic or asymptomatic	Household contacts	32.4% (48/148)	21	Contact: age, sex, BMI, smoking, relationship, education, underlying medical issues; Index case: age, sex, smoking, BMI, education, coughing, fever, lymphocyte count, Exposure hours after index case onset, physical contact, shared meal, shared living room, shared vehicle, number of contacts in household, no protective measures of contacts, ventilation and disinfection, separate dining, hours spending at home of index case; onset to admission time, indoor isolation, wearing mask
<i>Wu, Song et al.</i> <sup>11</sup>	Hangzhou, China	January 23 to February 28, 2020	–	144 symptomatic or asymptomatic	Household contacts	17.86% (50/280)	14	Contact: sex, age; Protective measures, shared transport
<i>Yousaf et al.</i> <sup>43</sup>	Wisconsin and Utah, USA	March 22 to April 22, 2020	RT-PCR	–	Household contacts	24.1% (47/195)	14	–
<i>Yu et al.</i> <sup>3</sup>	Wuhan, China	January 14 to February 14, 2020	–	560 symptomatic	Family contacts	10.2% (143/1396)	14	Contact: sex, age; Contact frequency
<i>Yung et al.</i> <sup>44</sup>	Singapore	March 5 to April 30, 2020	RT-PCR	223 symptomatic	Household contacts	6.1% (13/200)	14	–
<i>Zhang, Cheng et al.</i> <sup>10</sup>	China	January 28 to March 15, 2020	Nucleic acid tests	359 symptomatic or asymptomatic	Household contacts	16.1% (10/62)	–	Contact: age, sex; Contact frequency; Index case: severity of symptoms
<i>Zhang, Zhou et al.</i> <sup>45</sup>	Liaocheng, China	January 13 to 26, 2020	RT-PCR	11 symptomatic or asymptomatic	Family contacts	12.90% (12/93)	–	–



**S2 Table.** Assessment of factors potentially affecting susceptibility and infectivity in household transmission studies

Risk factors	Overall number of studies	Number of studies reporting significant associations
<i>Susceptibility (of contacts)</i>		
Age	18	12
Sex	14	3
Exposure period (to index case)	7	3
Relationship	6	4
Underlying medical conditions	1	1
BMI	1	0
Educational attainment	1	0
<i>Infectivity (of index case)</i>		
Cough	7	2
Sex	7	2
Clinical severity	6	3
Age	6	1
Fever	6	0
Myalgia	3	1
Fatigue	3	0
Pneumonia	2	2
Diarrhea	2	1
Expectoration	2	1
Lymphocyte count	2	1
Comorbidity	2	0
Educational attainment	2	0
Acute respiratory distress syndrome/sepsis	1	1
Chills	1	1
Dizziness	1	1
Health profession	1	1
Hospitalization	1	1
Neutrophil percentage	1	1
Abdominal pain	1	0
Arthralgia	1	0
BMI	1	0
Chest tightness	1	0
Dyspnea	1	0
Headache	1	0
Nasal congestion	1	0
Nausea	1	0

Palpitation	1	0
Pharyngalgia	1	0
Poor appetite	1	0
Rhinorrhea	1	0
Vomiting	1	0
White blood cell count	1	0
<i>Awareness and behavioral factors</i>		
Shared vehicle (with index case)	6	5
Contact frequency	6	4
Contacts wore face masks	3	3
Shared meal	3	2
Self-isolated after illness onset	3	1
Time interval from illness onset to hospital admission	3	0
Disinfectant use <sup>a</sup>	2	1
Ventilation duration <sup>a</sup>	2	1
Wear mask at home after illness onset	2	1
Time interval from illness onset to laboratory confirmation	2	0
Knowledge of own infectiousness after illness onset	1	1
Physical contact	1	1
Shared living room	1	1
Contacts smoking status	1	0
Frequency of room cleaning (wet type)	1	0
Index case eats with separate tableware	1	0
Index case hand hygiene	1	0
Index case smoking status	1	0
Knowledge score on COVID-19 before illness onset	1	0
Self-awareness of being infected with SARS-CoV-2 when developed illness	1	0
Time interval from illness onset to medical isolation	1	0
<i>Household characteristics</i>		
Number of people in household	5	2
Number of bedrooms per person	1	0
Number of washrooms	1	0
Residential area per person	1	0
Separate dining area	1	0
Urban/rural residence	1	0

<sup>a</sup> Includes one study that combined ventilation and disinfection, which was not significant

**S3 Table.** Household secondary attack rate comparison with other viruses

	<b>Location</b>	<b>Ref.</b>	<b>Number of index cases</b>	<b>Overall household secondary attack rate</b>	<b>Definition of household contact</b>	<b>Case ascertainment</b>
<b>Middle East Respiratory Syndrome</b>						
<i>Al Hosani et al.</i>	Abu Dhabi, United Arab Emirates	<sup>46</sup>	34	0% (0/105)	Household contacts	RT-PCR
<i>Arwady et al.</i>	Al-Qouz, Saudi Arabia	<sup>47</sup>	5	24% (19/79)	Family contacts	RT-PCR
<i>Assiri et al.</i>	Al-Hasa, Saudi Arabia	<sup>48</sup>	23	2.3% (5/217)	Household contacts	RT-PCR
<i>Drosten et al.</i>	Saudi Arabia	<sup>49</sup>	26	4% (12/280)	Household contacts	RT-PCR
<i>Memish et al.</i>	Al-Madinah al-Munawwarah, Saudi Arabia	<sup>50</sup>	18	1.8% (1/56)	Household contacts	RT-PCR
<i>Payne et al.</i>	Jordan	<sup>51</sup>	16	9% (2/23)	Household contacts	RT-PCR
<i>Van Kerkhove et al.</i>	Riyadh, Saudi Arabia	<sup>52</sup>	7	5.1% (12/234.5)	Household contacts	RT-PCR
<b>SARS-CoV</b>						
<i>Chan et al.</i>	Hong Kong, China	<sup>53</sup>	99	12.3% (30/243)	Household contacts	Positive contacts identified by the Hong Kong SARS registry
<i>Goh et al.</i>	Singapore	<sup>54</sup>	114	6.2% (26/417)	Household contacts	PCR or serologic test
<i>Lau et al.</i>	Hong Kong, China	<sup>55</sup>	881	8% (188/2139)	Household contacts	Symptomatic probable cases (no testing)
<i>Lee et al.</i>	Taiwan	<sup>56</sup>	13	0% (0/29)	Household contacts	Serology IgG standard indirect immunofluorescence antibody assay
<i>Ou et al.</i>	Beijing, China	<sup>57</sup>	232	3.3% (18/550)	Household contacts	–
<i>Wilson-Clark et al.</i>	Toronto, Canada	<sup>58</sup>	74	10.2% (18/176)	Household contacts	Symptom-based diagnosis (no testing)
<b>Other coronaviruses</b>						
<i>Beale et al.</i>	England, UK	<sup>59</sup>	70 HCoV-OC43 45 HCoV-229E 55 HCoV-NL63	HCoV-OC43: 13.2% (7/53) HCoV-229E: 10.1% (7/69) HCoV-NL63: 11.9% (5/42)	Household contacts	RT-PCR
<i>Esposito et al.</i>	Milan, Italy	<sup>60</sup>	33 HCoV-229E 13 HCoV-NL63 11 HCoV-OC43	HCoV-229E: 14.9% (14/94) HCoV-NL63: 0% (0/45) HCoV-OC43: 13.2% (5/38)	Household contacts	RT-PCR

<i>Health Protection Agency UK</i>	London, UK	<sup>61</sup>	1	Unspecified novel coronavirus: 2.6% (1/39)	Household contacts	RT-PCR
<i>Monto et al.</i>	Michigan, USA	<sup>62</sup>	263 HCoV-OC43 113 HCoV-229E 141 HCoV-HKU1 217 HCoV-NL63	HCoV-OC43: 10.6% HCoV-229E: 7.2% HCoV-HKU1: 8.6% HCoV-NL63: 12.6%	Household contacts	RT-PCR
<b>Influenza</b>						
<i>Tseng et al.</i>	Review of household transmission studies	<sup>63</sup>		SAR ranged from 1–38% based on PCR-confirmed infection, 6–35% based on influenza-like illness, and 3–31% based on acute respiratory illness		

**S4 Table.** Overdispersion of the number of secondary infections per household.

To examine for potential over-dispersion, we crudely assume that all households have size equal to the average number of contacts and equal secondary attack rate. Then,  $\text{Pr}[\geq 1 \text{ secondary infection in a household}] = 1 - (1 - \text{SAR})^n$ , where  $n$  is the average number of contacts for that study. This is a crude analysis that does not consider heterogeneity in household size. Given this limitation, statistical significance is not assessed, with results intended for illustration only.

<b>Author</b>	<b>Location</b>	<b>Average number of contacts per household</b>	<b>Secondary attack rate</b>	<b>Proportion of households reporting any secondary transmission from index cases</b>	<b>Probability of <math>\geq 1</math> secondary infection in a household</b>
<i>Wu, Huang et al.</i>	Zhuhai, China	4.229	0.324	0.629	0.809
<i>Rosenberg et al.</i>	New York, USA	3.330	0.382	0.612	0.799
<i>Wang, Tian et al.</i>	Beijing, China	2.702	0.230	0.331	0.506
<i>Yung et al.</i>	Singapore	1.493	0.065	0.052	0.095
<i>Draper et al.</i>	Northern Territory, Australia	1.821	0.039	0.036	0.070

## Supplemental methods

### SARS-CoV-2

- *Bi et al.*: Contact age was reported in increments of ten years (0-9, 10-19,...), which we categorized into 0-19 and  $\geq 20$  (children category includes 18 and 19 years).<sup>5</sup>
- *Böhmer et al.*: SAR reported as 75.0% (95% CI 19.0–99.0%; 3/4) among members of a household cluster in common isolation and 10.0% (1.2–32.0%; 2/20) among household contacts only together until isolation of the patient, so overall SAR=5/24=20.8%.<sup>7</sup>
- *Chaw et al.*: There were 12 infections among 85 children, 13 infections among 31 spouses, and 3 infections among 148 other household contacts, so overall household SAR=28/264=10.6%, children SAR=12/85=14.1%, and adult SAR=16/179=8.9%.<sup>16</sup>
- *Chen et al.*: Family SAR (18.01%) and total number of family members (272) were provided, so the number of infected family members=.1801\*272=49.<sup>6</sup>
- *Cheng et al.*: Total number of household secondary cases (10) and number of household contacts (151) were provided, so overall household SAR=10/151=6.6%.<sup>14</sup> Contact age was reported as 0-19; 20-39; 40-59;  $\geq 60$ , which we categorized into 0-19 years and  $\geq 20$  years (children category includes 18 and 19 years).
- *Dattner et al.*: This study reported a total of 1544 children including index cases, 512 of which were infected (33%).<sup>21</sup> Excluding the index cases, they reported that 25% of children were infected, but did not provide the numerator or denominator. Therefore, we estimated the number of index cases, secondary infections, and total contacts by solving for x:  $(512-x)/(1544-x)=.25$ ;  $x=168$  index cases;  $512-168=344$  secondary infections among children;  $1544-168=1376$  total contacts. This study also reported a total of 1809 adults including index cases, 998 of which were infected (55%). Excluding the index cases, they reported 44% of adults were infected, but did not provide the numerator or denominator. Solving again for x, we estimate there were:  $(998-x)/(1809-x)=.44$ ;  $x=361$  index cases;  $998-361=637$  secondary infections among adults;  $1809-361=1448$  total contacts. The total number of infected secondary infections=344+637=981, the total number of contacts=1376+1448=2824, and overall SAR=981/2824=34.7%.
- *Draper et al.*: This study reported 2 infections among 51 total household contacts, both from the same household.<sup>15</sup> The total number of households were not reported, but since there were 28 total index cases, we assumed there were 28 households and 1/28 households (3.6%) had secondary infections.
- *Hua et al.*: This study reported 151 total infections and 684 negative results, so overall SAR=151/835=18.1%.<sup>24</sup>
- *Jing et al.*: We calculated the total number of household contacts at the same residential address as the number of household secondary cases (93) plus the number of uninfected household contacts (449), which is 542. The total number of female contacts = 53 infected + 227 uninfected = 280; total male contacts = 40 infected + 218 uninfected = 258. Total contacts <20 years = 8 infected + 117 uninfected = 125 total children (includes 18 and 19 years). We collapsed adults into  $\geq 20$  years: there were 85 infected + 327 uninfected = 412 total.
- *Liu et al.*: There were 131 infections among 563 total spouses and 199 infections among 1878 non-spouse family members, so overall SAR =  $(131+199)/(563+1878) = 330/2441 = 13.5\%$ .<sup>9</sup> Contact age was reported as 0-9 years, 10-19 years, ..., which we collapsed to 0-19 and  $\geq 20$  categories (children category includes 18 and 19 years).
- *Park, Kim et al.*: This article reported 17 contacts of asymptomatic index patients, but Table 1 reported 15 total (4 asymptomatic and 11 presymptomatic).<sup>31</sup> We used 15 contacts in our analysis as depicted in the table as the more conservative estimate.

- *Pollán et al.*: Household SAR was reported for a point-of-care test (31.4%) and immunoassay (37.4%).<sup>33</sup> The manuscript reported that a verification study of the tests demonstrated higher sensitivity for the immunoassay than the point-of-care test, so we included the immunoassay SAR (37.4%) in this review. With a SAR of 37.4% and 860 total household members, we calculated 322 positive household contacts.
- *Silveira et al.*: This study included 18 total index cases.<sup>35</sup> The article reported that two index cases lived alone, but Supplementary Table 5 indicates that a third also had no family members, so there were 15 households with family members. In two of the households, no family members were tested, so there were 13 households with family members tested, six of which had any positive family members (46.2%).
- *Wu, Huang et al.*: Contact age was reported as 0-3, 4-18, 19-60, and >61 years categories, which we collapsed into  $\leq 18$  and  $>18$  categories (children category includes 18 years).<sup>42</sup>
- *Yung et al.*: Contact age reported as 0-4; 5-9; 10-16 years (children category does not include 17 years).<sup>44</sup>

*Other viruses:*

- *Ou et al.*: This study reported SARs for household members who contacted the index case during the symptomatic period (SAR: 4.6%; 383 total) and during the incubation period (SAR: 0%; 167 total), so overall SAR= $18/550=3.3\%$ .<sup>57</sup>
- *Van Kerkhove et al.*: There were 828 total workers in 24 villas.<sup>52</sup> If each villa was considered a house, there were  $828/24=34.5$  workers per house. There were 19 infected workers in 7 villas. Without the index cases, there were  $19-7=12$  infected contacts and  $33.5*7=235$  total household contacts. SAR= $12/235=5.1\%$ .

## References

1. Kwok KO, Wong VWY, Wei WI, Wong SYS, Tang JW-T. Epidemiological characteristics of the first 53 laboratory-confirmed cases of COVID-19 epidemic in Hong Kong, 13 February 2020. *Eurosurveillance* 2020; **25**(16): 2000155.
2. Aghaali M, Kolifarhood G, Nikbakht R, Saadati HM, Hashemi Nazari SS. Estimation of the serial interval and basic reproduction number of COVID-19 in Qom, Iran, and three other countries: A data-driven analysis in the early phase of the outbreak. *Transboundary and Emerging Diseases* 2020.
3. Yu HJ, Hu YF, Liu XX, et al. Household infection: The predominant risk factor for close contacts of patients with COVID-19. *Travel Medicine and Infectious Disease* 2020; **36**: 101809.
4. Zhang HJ, Su YY, Xu SL, et al. Asymptomatic and symptomatic SARS-CoV-2 infections in close contacts of COVID-19 patients: a seroepidemiological study. *Clinical Infectious Diseases* 2020.
5. Bi Q, Wu Y, Mei S, et al. Epidemiology and transmission of COVID-19 in 391 cases and 1286 of their close contacts in Shenzhen, China: a retrospective cohort study. *The Lancet Infectious Diseases* 2020.
6. Chen Y, Wang AH, Yi B, et al. [Epidemiological characteristics of infection in COVID-19 close contacts in Ningbo city]. *Zhonghua Liu Xing Bing Xue Za Zhi* 2020; **41**(5): 667-71.
7. Böhmer MM, Buchholz U, Corman VM, et al. Investigation of a COVID-19 outbreak in Germany resulting from a single travel-associated primary case: a case series. *The Lancet Infectious Diseases* 2020.
8. Liu Z, Chu R, Gong L, Su B, Wu J. The assessment of transmission efficiency and latent infection period on asymptomatic carriers of SARS-CoV-2 infection. *International Journal of Infectious Diseases* 2020.
9. Liu T, Liang W, Zhong H, et al. Risk factors associated with COVID-19 infection: a retrospective cohort study based on contacts tracing. *Emerging Microbes & Infections* 2020: 1-31.
10. Zhang W, Cheng W, Luo L, et al. Secondary Transmission of Coronavirus Disease from Presymptomatic Persons, China. *Emerging Infectious Diseases* 2020; **26**(8).
11. Wu Y, Song S, Kao Q, Kong Q, Sun Z, Wang B. Risk of SARS-CoV-2 infection among contacts of individuals with COVID-19 in Hangzhou, China. *Public Health* 2020; **185**: 57-9.
12. Barrett PM, Bambury N, Kelly L, Condon R, Crompton J, Sheahan A. Measuring the effectiveness of an automated text messaging active surveillance system for COVID-19 in the south of Ireland, March to April 2020. *Euro Surveillance* 2020; **25**(23).



13. Coronavirus Disease-19: Summary of 2,370 Contact Investigations of the First 30 Cases in the Republic of Korea. *Osong Public Health and Research Perspectives* 2020; **11**(2): 81-4.
14. Cheng HY, Jian SW, Liu DP, Ng TC, Huang WT, Lin HH. Contact Tracing Assessment of COVID-19 Transmission Dynamics in Taiwan and Risk at Different Exposure Periods Before and After Symptom Onset. *JAMA Internal Medicine* 2020.
15. Draper AD, Dempsey KE, Boyd RH, et al. The first 2 months of COVID-19 contact tracing in the Northern Territory of Australia, March-April 2020. *Communicable Diseases Intelligence* 2020; **44**.
16. Chaw L, Koh WC, Jamaludin SA, Naing L, Alikhan MF, Wong J. SARS-CoV-2 transmission in different settings: Analysis of cases and close contacts from the Tablighi cluster in Brunei Darussalam. *medRxiv* 2020.
17. Wang X, Pan Y, Zhang D, et al. Basic epidemiological parameter values from data of real-world in mega-cities: the characteristics of COVID-19 in Beijing, China. *BMC Infectious Diseases* 2020; **20**(1): 526.
18. Arnedo-Pena A, Sabater-Vidal S, Meseguer-Ferrer N, et al. COVID-19 secondary attack rate and risk factors in household contacts in Castellon (Spain): Preliminary report. *Enfermedades Emergentes* 2020; **19**(2): 64-70.
19. Boscolo-Rizzo P, Borsetto D, Spinato G, et al. New onset of loss of smell or taste in household contacts of home-isolated SARS-CoV-2-positive subjects. *European Archives of Oto-rhino-laryngology* 2020: 1-4.
20. Burke RM. Active monitoring of persons exposed to patients with confirmed COVID-19—United States, January–February 2020. *MMWR Morbidity and mortality weekly report* 2020; **69**.
21. Dattner I, Goldberg Y, Katriel G, et al. The role of children in the spread of COVID-19: Using household data from Bnei Brak, Israel, to estimate the relative susceptibility and infectivity of children. *medRxiv* 2020.
22. Dawson P, Rabold EM, Laws RL, et al. Loss of Taste and Smell as Distinguishing Symptoms of COVID-19. *Clinical Infectious Diseases* 2020.
23. Dong XC, Li JM, Bai JY, et al. [Epidemiological characteristics of confirmed COVID-19 cases in Tianjin]. *Zhonghua Liu Xing Bing Xue Za Zhi* 2020; **41**(5): 638-41.
24. Hua CZ, Miao ZP, Zheng JS, et al. Epidemiological features and viral shedding in children with SARS-CoV-2 infection. *Journal of Medical Virology* 2020.
25. Jing Q-L, Liu M-J, Yuan J, et al. Household secondary attack rate of COVID-19 and associated determinants in Guangzhou, China: a retrospective cohort study. *The Lancet Infectious Diseases* 2020.

26. Laxminarayan R, Wahl B, Dudala SR, et al. Epidemiology and transmission dynamics of COVID-19 in two Indian states. *medRxiv* 2020.
27. Lee M, Eun Y, Park K, Heo J, Son H. Follow up investigation of asymptomatic COVID-19 cases at diagnosis in Busan, Korea. *Epidemiology and Health* 2020; **0**(0): e2020046-0.
28. Li W, Zhang B, Lu J, et al. The characteristics of household transmission of COVID-19. *Clinical Infectious Diseases* 2020.
29. Luo L, Liu D, Liao X-l, et al. Modes of Contact and Risk of Transmission in COVID-19: A Prospective Cohort Study 4950 Close Contact Persons in Guangzhou of China. 2020.
30. Park YJ, Choe YJ, Park O, et al. Contact Tracing during Coronavirus Disease Outbreak, South Korea, 2020.
31. Park SY, Kim Y-M, Yi S, et al. Coronavirus Disease Outbreak in Call Center, South Korea. *Emerging Infectious Diseases* 2020; **26**(8).
32. Patel A, Charani E, Ariyanayagam D, et al. New-onset anosmia and ageusia in adult patients diagnosed with SARS-CoV-2 infection. *Clinical Microbiology and Infection* 2020.
33. Pollán M, Pérez-Gómez B, Pastor-Barriuso R, et al. Prevalence of SARS-CoV-2 in Spain (ENE-COVID): a nationwide, population-based seroepidemiological study. *Lancet* 2020.
34. Rosenberg ES, Dufort EM, Blog DS, et al. COVID-19 Testing, Epidemic Features, Hospital Outcomes, and Household Prevalence, New York State-March 2020. *Clinical Infectious Diseases* 2020.
35. Silveira M, Barros A, Horta B, et al. Repeated population-based surveys of antibodies against SARS-CoV-2 in Southern Brazil. *medRxiv* 2020.
36. Son H, Lee H, Lee M, et al. Epidemiological characteristics of and containment measures for coronavirus disease 2019 in Busan Metropolitan City, South Korea. *Epidemiology and Health* 2020: e2020035.
37. Sun WW, Ling F, Pan JR, et al. [Epidemiological characteristics of 2019 novel coronavirus family clustering in Zhejiang Province]. *Zhonghua Yu Fang Yi Xue Za Zhi* 2020; **54**(0): E027.
38. Xin H, Jiang F, Xue A, et al. Risk factors associated with occurrence of COVID-19 among household persons exposed to patients with confirmed COVID-19 in Qingdao Municipal, China. *Transboundary and Emerging Diseases* 2020.
39. Wang Z, Ma W, Zheng X, Wu G, Zhang R. Household transmission of SARS-CoV-2. *The Journal of Infection* 2020.
40. Wang Y, Tian H, Zhang L, et al. Reduction of secondary transmission of SARS-CoV-2 in households by face mask use, disinfection and social distancing: a cohort study in Beijing, China. *BMJ Global Health* 2020; **5**(5): e002794.

41. Wang X, Zhou Q, He Y, et al. Nosocomial outbreak of COVID-19 pneumonia in Wuhan, China. *The European Respiratory Journal* 2020; **55**(6).
42. Wu J, Huang Y, Tu C, et al. Household Transmission of SARS-CoV-2, Zhuhai, China, 2020. *Clinical Infectious Diseases* 2020.
43. Yousaf AR, Duca LM, Chu V, et al. A prospective cohort study in non-hospitalized household contacts with SARS-CoV-2 infection: symptom profiles and symptom change over time. *Clinical Infectious Diseases* 2020.
44. Yung CF, Kam KQ, Chong CY, et al. Household Transmission of SARS-CoV-2 from Adults to Children. *The Journal of Pediatrics* 2020.
45. Zhang JZ, Zhou P, Han DB, et al. [Investigation on a cluster epidemic of COVID-19 in a supermarket in Liaocheng, Shandong province]. *Zhonghua Liu Xing Bing Xue Za Zhi* 2020; **41**(0): E055.
46. Al Hosani FI, Kim L, Khudhair A, et al. Serologic Follow-up of Middle East Respiratory Syndrome Coronavirus Cases and Contacts-Abu Dhabi, United Arab Emirates. *Clinical Infectious Diseases* 2019; **68**(3): 409-18.
47. Arwady MA, Alraddadi B, Basler C, et al. Middle East respiratory syndrome coronavirus transmission in extended family, Saudi Arabia, 2014. *Emerging Infectious Diseases* 2016; **22**(8): 1395.
48. Assiri A, McGeer A, Perl TM, et al. Hospital outbreak of Middle East respiratory syndrome coronavirus. *The New England Journal of Medicine* 2013; **369**(5): 407-16.
49. Drosten C, Meyer B, Müller MA, et al. Transmission of MERS-coronavirus in household contacts. *New England Journal of Medicine* 2014; **371**(9): 828-35.
50. Memish ZA, Al-Tawfiq JA, Alhakeem RF, et al. Middle East respiratory syndrome coronavirus (MERS-CoV): A cluster analysis with implications for global management of suspected cases. *Travel Medicine and Infectious Disease* 2015; **13**(4): 311-4.
51. Payne DC, Biggs HM, Al-Abdallat MM, et al. Multihospital Outbreak of a Middle East Respiratory Syndrome Coronavirus Deletion Variant, Jordan: A Molecular, Serologic, and Epidemiologic Investigation. *Open Forum Infectious Diseases* 2018; **5**(5): ofy095.
52. Van Kerkhove MD, Alaswad S, Assiri A, et al. Transmissibility of MERS-CoV infection in closed setting, Riyadh, Saudi Arabia, 2015. *Emerging Infectious Diseases* 2019; **25**(10): 1802.
53. Chan LY, Wong JT, Li PK, Lui SF, Fung H, Sung J. Risk of transmission of severe acute respiratory syndrome to household contacts by infected health care workers and patients. *The American Journal of Medicine* 2004; **116**(8): 559-60.
54. Goh DL, Lee BW, Chia KS, et al. Secondary household transmission of SARS, Singapore. *Emerg Infect Dis* 2004; **10**(2): 232-4.

55. Lau JT, Lau M, Kim JH, Tsui HY, Tsang T, Wong TW. Probable secondary infections in households of SARS patients in Hong Kong. *Emerg Infect Dis* 2004; **10**(2): 235-43.
56. Lee CC, Chen SY, Chang IJ, et al. Seroprevalence of SARS coronavirus antibody in household contacts. *Epidemiology and Infection* 2005; **133**(6): 1119-22.
57. Ou J, Li Q, Zeng G, Dun Z. Efficiency of quarantine during an epidemic of severe acute respiratory syndrome-Beijing, China, 2003. *MMWR: Morbidity & Mortality Weekly Report* 2003; **52**(43): 1037-.
58. Wilson-Clark SD, Deeks SL, Gournis E, et al. Household transmission of SARS, 2003. *Canadian Medical Association Journal* 2006; **175**(10): 1219-23.
59. Beale S, Lewer D, Aldridge RW, et al. Household transmission of seasonal coronavirus infections: Results from the Flu Watch cohort study. *Wellcome Open Research* 2020; **5**(145): 145.
60. Esposito S, Bosis S, Niesters HG, et al. Impact of human coronavirus infections in otherwise healthy children who attended an emergency department. *Journal of Medical Virology* 2006; **78**(12): 1609-15.
61. Health Protection Agency UK Novel Coronavirus Investigation team. Evidence of person-to-person transmission within a family cluster of novel coronavirus infections, United Kingdom, February 2013. *Euro surveillance: bulletin Européen sur les maladies transmissibles= European communicable disease bulletin* 2013; **18**(11): 20427.
62. Monto AS, DeJonge P, Callear AP, et al. Coronavirus occurrence and transmission over 8 years in the HIVE cohort of households in Michigan. *The Journal of Infectious Diseases* 2020.
63. Tsang TK, Lau LLH, Cauchemez S, Cowling BJ. Household Transmission of Influenza Virus. *Trends in Microbiology* 2016; **24**(2): 123-33.