

## SUPPLEMENTAL MATERIAL

### Protein Expression

#### *Protein Expression in E. coli Bacteria for Cell Lysate-Based Single-Molecule TIRF Imaging*

Each vector was transformed into BL21-CodonPlus(DE3)-RIPL competent cells (Agilent Technologies #230280). A single colony was picked and inoculated in 1 mL of terrific broth (TB) (protocol adopted from Cold Spring Harbor protocol, doi: 10.1101/pdb.rec8620) with 50 µg/mL carbenicillin and 50 µg/ml chloramphenicol. The 1-mL culture was shaken at 37°C overnight, and then 50 µL of the overnight culture was inoculated into 1-mL TB. The 1-mL culture was shaken at 37°C for 3 hours and then cooled on ice for 10 minutes. IPTG was added to the cooled culture to final concentration of 0.1 mM to induce expression. The culture was shaken at 18°C overnight, and the cells were harvested by centrifugation at 14,000 rcf for 1 minute at 4°C. The supernatant was discarded, and 100 µL of B-PER™ complete bacterial protein extraction reagent (Thermo Scientific #89821) with 2 mM MgCl<sub>2</sub>, 1 mM EGTA, 1 mM DTT, 0.1 mM ATP, 2 mM PMSF, and 10% glycerol was used to resuspend the pellet. The resuspended cells were flash frozen in liquid nitrogen. To lyse the cells, the frozen cells were thawed, and then nutated at room temperature for 20 minutes in the dark. The lysate was cleared by centrifugation at 14,000 rcf for 20 minutes at 4°C.

The cleared lysate was then used for the initial single-molecule total internal reflection fluorescence (TIRF) microscopy studies to determine whether the mutant motors are mobile or not. The assay was performed as described before {Rao:2019jf}, except that a different assay buffer was used here (60 mM HEPES, 50 mM KAc, 2 mM MgCl<sub>2</sub>, 1 mM EGTA, 1 mM DTT, 10 µM taxol, 2 mM ATP, 50 mM glucose, gloxy, 1.25 mg/ml α-casein, 10% glycerol). The lysate was diluted 100× in the assay buffer before the solution was flown into the slide microscope chamber. The GFP-tag was used to track the motors. 600 frames were acquired for each video with an acquisition time of 200 ms per frame. Kymographs were generated using Fiji.

#### *Protein Expression in E. coli Bacteria for Purified Proteins*

Each vector was transformed and inoculated in 1-mL TB as described about. The overnight 1-mL culture was inoculated into 400 mL of TB with 2 µg/mL carbenicillin and 2 µg/mL chloramphenicol. The 400-mL culture was shaken at 37°C for 4–5 hours and then cooled on ice for 1 hour. IPTG was then added to the culture to a final concentration of 0.1 mM to induce expression. Afterwards, the culture was shaken at 18°C overnight. The cells were harvested by centrifugation at 3,000 rcf for 10 minutes at 4°C. The supernatant was discarded, and 5 mL of B-PER™ complete bacterial protein extraction reagent with 2 mM MgCl<sub>2</sub>, 1 mM EGTA, 1 mM DTT, 0.1 mM ATP, 2 mM PMSF, and 10% glycerol was added to the cell pellet. The cells were fully resuspended and flash frozen in liquid nitrogen. If the purification was not done on the same day, the frozen cells were stored at –80°C.

### Protein Purification

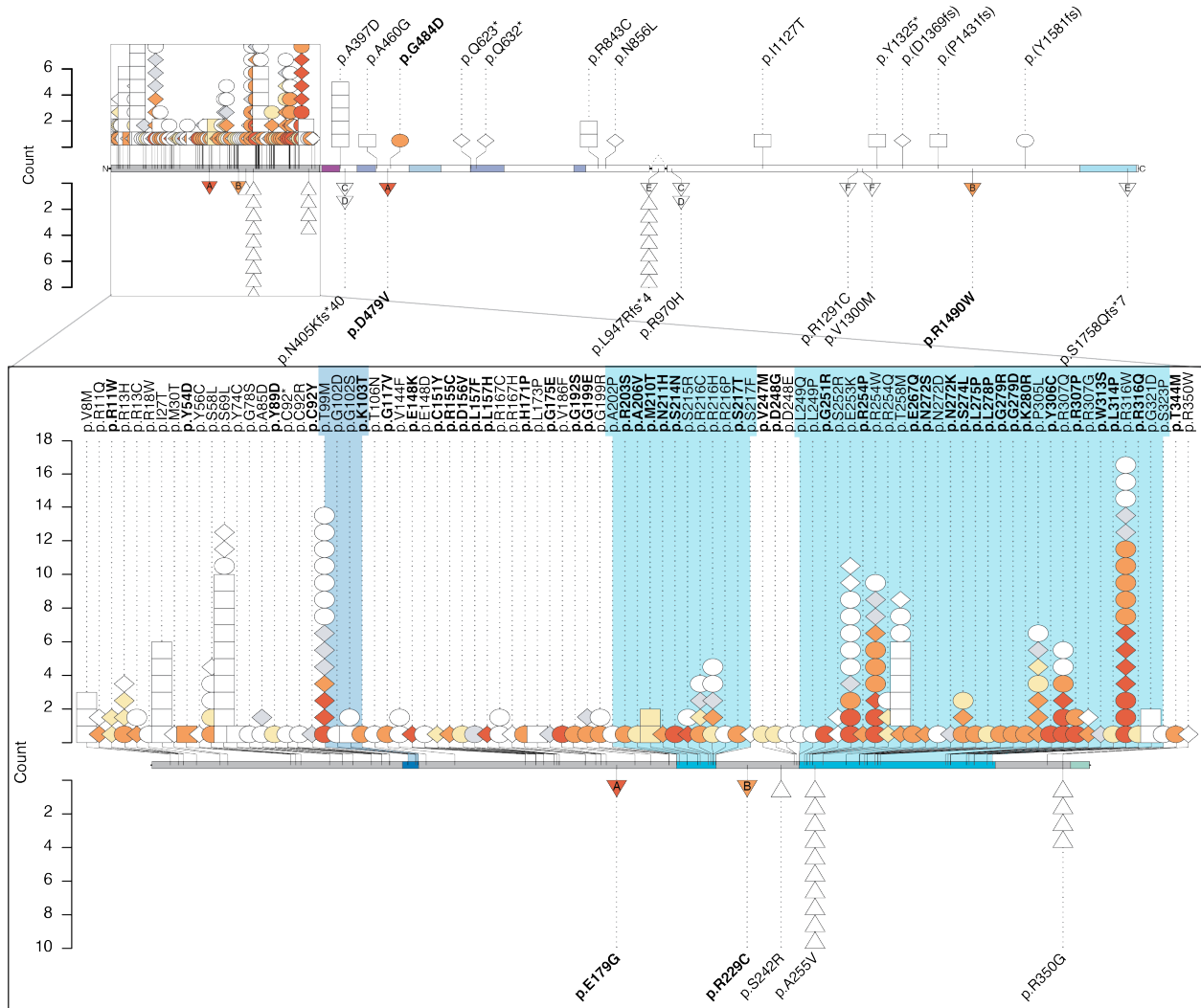
To purify the protein, the frozen cells were thawed at 37°C. The solution was nutated at room temperature for 20 minutes and then dounced for 10 strokes on ice to lyse the cells. The cell lysate was cleared by centrifugation at 80,000 rpm for 10 minutes at 4°C using Beckman tabletop centrifuge unit. The lysate was nutated with 200 µL of Ni-NTA resin (Roche cOmplete™ His-Tag purification resin, Millipore Sigma #5893682001) at 4°C for 1 hour. The

resin was washed with wash buffer (50 mM HEPES, 300 mM KCl, 2 mM MgCl<sub>2</sub>, 1 mM EGTA, 1 mM DTT, 1 mM PMSF, 0.1 mM ATP, 0.1% Triton X-100, 10% glycerol, pH 7.2), and labeled with 10 μM SNAP-Cell® TMR-Star (New England Biolabs Inc. #S9105S) at room temperature for 10 minutes. The resin was further washed, and the protein was eluted with elution buffer (wash buffer with 250 mM imidazole). The elute was flash frozen and store −80°C.

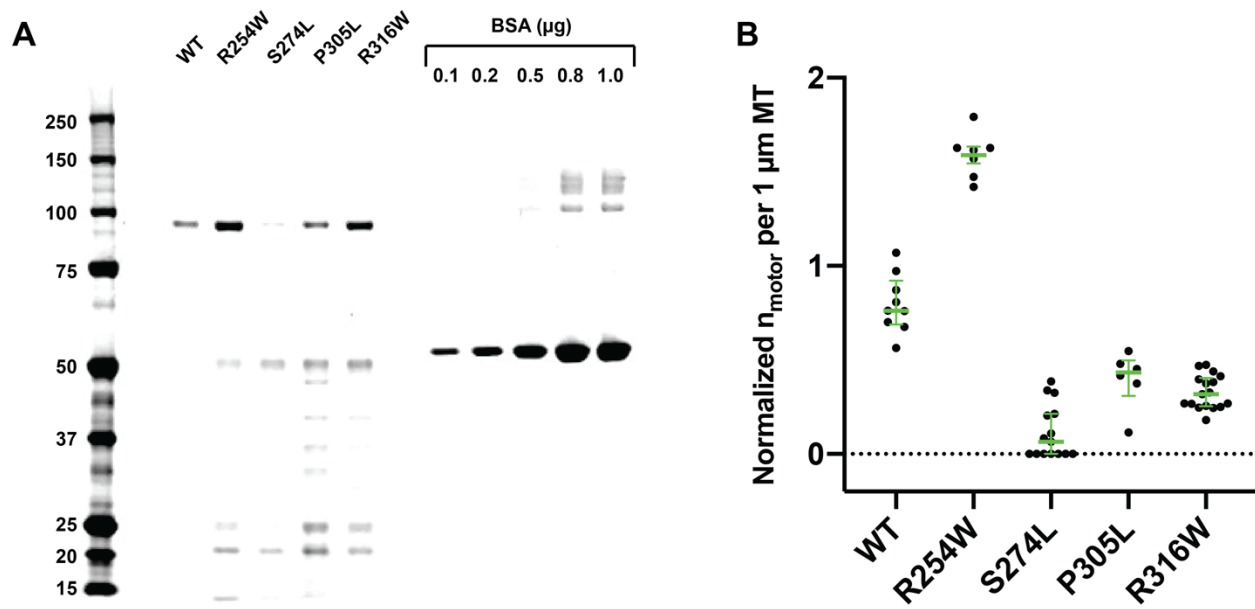
To remove inactive motors, an MT-binding and -release assay was performed. 50–100 μL of eluted protein was exchanged into low salt buffer (30 mM HEPES, 50 mM KCl, 2 mM MgCl<sub>2</sub>, 1 mM EGTA, 1 mM DTT, and 0.1 mM AMP-PnP) using a 0.5-mL Zeba™ spin desalting column (7-kDa MWCO) (Thermo Scientific #89882). AMP-PNP and taxol was added to the flow-through to a final concentration of 1 mM and 10 μM, respectively. 5 μL of 5 mg/mL taxol-stabilized MTs was added to the mixture, and the solution was incubated at room temperature for 5 minutes to allow the motors to bind to the MTs. The mixture was spun through a 100 μL glycerol cushion (PIPES 80 mM, 2 mM MgCl<sub>2</sub>, 1 mM EGTA, 1 mM DTT, 10 μM taxol, and 60% glycerol) by centrifugation at 40,000 rpm for 10 minutes at room temperature. The supernatant was removed, and the pellet was resuspended in 50 μL high salt buffer (30 mM HEPES, 300 mM KCl, 2 mM MgCl<sub>2</sub>, 1 mM EGTA, 1 mM DTT, 10 μM taxol, 3 mM ATP, and 10% glycerol). The MTs were removed by centrifugation at 40,000 rpm for 5 minutes at room temperature. Finally, the supernatant was aliquoted and flash frozen as the “MTBR” fraction.

To determine the concentration of the MTBR fractions, SDS page gel (NuPAGE™ 4-12% Bis-Tris protein gel, Life Technology #NP0336BOX) was used and stained by InstantBlue® Protein Stain (Expedeon #ISB1L). The band intensity was determined using Fiji, and the BSA standard was fitted with exponential increase using Prism.

**SUPPLEMENTAL FIGURES:**



**Figure S1: Detailed *KIF1A* variants by severity.** Similar to Fig. 1, icons representing 251 affected individuals are shown below, with disease severity indicated for 98 of these cases. Variants are labeled. On top is the full-length protein, and on the bottom in a zoom in of the motor domain. Each icon represents a unique individual. The shape indicates inheritance and color indicates disease severity. In both the full-length protein and the motor domain, monoallelic variants are shown above and biallelic variants are shown below. Compound heterozygous individuals are represented by two separate triangles, one at each variant: those triangles have letters to indicate variant pairing. MT-binding regions in the motor domain are indicated by color.



**Figure S2: KIF1A binding fraction.** (A) SDS-PAGE gel of KIF1A MT-binding and -release fraction. The KIF1A(393)-LZ-SNAPf-GFP construct has a size of 96 kDa. BSA was loaded as a standard. The concentration of KIF1A was calculated according to BSA standard. WT: 190 nM; p.Arg254Trp: 710 nM; p.Ser274Leu: 34 nM; p.Pro305Leu: 237 nM; p.Arg316Trp: 541 nM. (B) Normalized motor number,  $n_{\text{motor}}$ , per 1  $\mu\text{m}$  MT length for WT and the mobile mutants. The concentrations of the mutant motors in the flow chamber were normalized against the concentration of WT KIF1A. The number of motors attached and moving along MTs was counted and divided by the length of the MT.

#### SUPPLEMENTAL TABLES:

**Table S1: Demographics and genetic testing information.** Summary data including age, sex, severity score, and type of genetic testing received included for all individuals in our cohort. In cases where an individual's genetic test report described additional variants, this is indicated and the variants are included in detail in table S2.

**Table S2: Additional variants.** When an individual's genetic test indicated variants in genes other than KIF1A, those variants and the inheritance status (if known) are listed here by subject ID along with any known disease association (if present) and the inheritance pattern for the known disease.

**Table S3: VABS-II and VABS-III summary data.** Summary statistics of Vineland Adaptive Behavior Scales, second and third editions, parent or caregiver forms. Median scores are reported, with the mean indicated in parentheses for VABS-III. VABS scores are norm-referenced to individuals of the same age. Normed domain level scores are standardized with a mean of 100 and a standard deviation of 15.

**Table S4: Variant summary information and in silico predictions.** Detailed variant-level information is provided for all variants in our cohort or the literature, along with number of reported affected individuals and in silico prediction scores. Variants were all standardized on

hg19. Variants annotated with population allele frequency, ACMG variant description, ClinVar description, as well as REVEL, CADD14, and SpliceAI scores.

**Table S5: Literature summary data.** Previously reported cases from the literature are described along with summarized phenotypic features. Each described individual was assigned a record ID to assist with record keeping. The original IDs used in the initial papers are also included. Phenotypic information absent from the original paper is indicated by ‘nr’, and information that does is not relevant to a given case is indicated by ‘na’.