

Supporting information

Asymptomatic SARS-CoV-2 infections: a living systematic review and meta-analysis

Diana Buitrago-Garcia, Dianne Egli-Gany, Michel J Counotte, Stefanie Hossmann, Hira Imeri,

Mert Aziz Ipekci, Georgia Salanti, Nicola Low Institute of Social and Preventive Medicine, University of Bern, Bern, Switzerland

Item	Title	Page
S1 Text	Search strings	1
S1 Table	Types of study included in successive versions of the living systematic review, as of 10 June 2020	3
S2 Table	Location of studies contributing data to review questions 1 and 2	4
S1 Figure	Flow chart	5
S2 Figure	Review question 1, forest plot of included studies, by study precision	6
S3 Figure	Risk of bias in studies included in review question 1 and 2	7
S4 Figure	Review question 2, forest plot of included studies, by study precision	8
S5 Figure	Sub-group analysis, review question 1, comparing studies of hospitalised patients with all other settings	9
S6 Figure	Sensitivity analysis, review question 1, omitting studies that were preprints at the time of literature search	10
S7 Figure	Assessment of credibility of mathematical modelling studies	11
S1 PRISMA	Checklist	12

S1 Text. Search strings

From: Living Evidence on COVID-19 (<https://ispmbern.github.io/covid-19/living-review/collectingdata.html>, accessed 10.06.2020)

We retrieve data from [EMBASE](#) via OVID, [MEDLINE](#) via PubMed, BioRxiv and MedRxiv.

Search terms

When searches are updated, references that are identified that were not in the database before, are inserted by date (**date_entrez**) they were indexed in remote database, the date they are inserted in OUR database is formatted as the '**strategydate**' (raw data is available [here](#)).

01.05.2020

EMBASE:

```
(SARS coronavirus/ or middle east respiratory syndrome/ or severe acute respiratory syndrome/ or (coronavirus* or corona virus* or HCoV* or ncov* or covid or covid19 or sars-cov* or sarscov* or Sars-coronavirus* or Severe Acute Respiratory Syndrome Coronavirus*).mp.) and 20191201:20301231.(dc).
```

29.04.2020

MEDLINE:

```
("coronavirus"[MH] OR "coronavirus infections"[MH] OR "coronavirus"[TW] OR "corona virus"[TW] OR "HCoV"[TW] OR "nCov"[TW] OR "covid"[TW] OR "covid19"[TW] OR "Severe Acute Respiratory Syndrome Coronavirus 2"[TW] OR "SARS-CoV2"[TW] OR "SARS-CoV 2"[TW] OR "SARS Coronavirus 2"[TW] OR "MERS-CoV"[TW]) AND (2019/1/1:3000[PDAT])
```

01.04.2020

From 01.04.2020, we retrieve the currate BioRxiv/MedRxiv dataset [Link](#)

26.03.2020

MEDLINE:

```
("Wuhan coronavirus" [Supplementary Concept] OR "COVID-19" OR SARS-CoV-2 OR "2019 ncov"[tiab] OR (("novel coronavirus"[tiab] OR "new coronavirus"[tiab]) AND (wuhan[tiab] OR 2019[tiab])) OR 2019-nCoV[All Fields] OR (wuhan[tiab] AND coronavirus[tiab]))
```

EMBASE:

```
(nCov or 2019-nCoV or ((new or novel or wuhan) adj3 coronavirus) or covid19 or covid-19 or SARS-CoV-2).mp.
```

BioRxiv/MedRxiv:

```
ncov or corona or wuhan or COVID or SARS-CoV-2
```

With the kind support of the [Public Health & Primary Care Library PHC](#), and following guidance of the [Medical Library Association](#)

01.01.2020

MEDLINE:

```
("Wuhan coronavirus" [Supplementary Concept] OR "COVID-19" OR "2019  
ncov"[tiab] OR (("novel coronavirus"[tiab] OR "new coronavirus"[tiab]) AND  
(wuhan[tiab] OR 2019[tiab])) OR 2019-nCoV[All Fields] OR (wuhan[tiab] AND  
coronavirus[tiab]))))
```

EMBASE:

```
ncov OR (wuhan AND corona) OR COVID
```

BioRxiv/MedRxiv:

```
ncov or corona or wuhan or COVID
```

We retained publications that used the keywords listed below in the title or abstract.

```
"asyp*" OR "pre-symp*" OR "presymp*" OR "preclinical" OR "pre-clinical" OR "without symptoms"  
OR "no symptoms" OR "free of symptoms" OR "non-symp*" OR "nonsymp*" OR "symptom-free" OR  
"symptomfree"
```

S1 Table. Changes over time in types of evidence about asymptomatic SARS-CoV-2 infection. Number of new studies identified, by date of search

Version	Version 1	Version 2	Version 3	Overall
Search date	25.03.2020	20.04.2020	10.06.2020	
Observational studies				
Contact investigation	6	4 ^a	7	17 ^a
Evacuation	2 ^b
Contact investigation, aggregated	..	2	7 ^c	9 ^c
Outbreak investigation	..	4 ^c	8	12
Screening	..	4 ^b	4	8 ^b
Hospitalised adults	..	8 ^d	10	18 ^d
Hospitalised children	..	3	7	10
Hospitalised adults and children	10	10
Secondary attack rate ^e	1 ^e	1
Statistical modelling	1	0	0	1
Mathematical modelling	2	2	4	8
Total	11	25^b	58	94

Footnotes refer to specific studies, where data from one version have been updated in a new publication. Citations use the number of the study in the reference list in the main text.

- a. In version 3, one study (Le TQM [30]) does not appear in forest plot because participants were included in a larger study (Wong J [103]), which was categorised with hospitalised adults)
- b. In version 2, studies of evacuees re-distributed into new categories: screening (Arima Y [28], which replaces Nishiura H [25]) and hospitalised adults (Tabata S [27]). In overall column total, include in their new category. In column total for version 2, these studies are not included because they were not newly identified studies;
- c. In version 3, one study (Kimball A [35]) replaced (by Arons M [58]) with updated data
- d. In version 3, one study (Breslin N [29]) replaced (by Andrikopoulou [56]) with updated data
- e. New category in version 3. Chaw L [65] contributes data only to calculation of secondary attack rate. Four studies in other categories also contribute to this analysis

S2 Table. Country in which studies were done to estimate proportions of asymptomatic and pre-symptomatic SARS-CoV-2 infections

Review question 1, proportion of asymptomatic infection

Country	Number of studies^a	SARS-CoV-2 cases, total
China	44	3619
Germany	6	174
South Korea	5	619
USA	5	298
Italy	3	556
United Kingdom	3	200
India	2	465
Brunei	1	138
Cruise Ship	1	104
France	1	13
Iraq	1	15
Japan	1	12
Malaysia	1	4
Saudi Arabia	1	128
Spain	1	16
Taiwan	1	22
Thailand	1	11
Vietnam	1	208
Total	79	6602

Review question 2: proportion of pre-symptomatic infection

Country	Number of studies^a	Asymptomatic SARS-CoV-2 cases at time of testing, total
China	14	353
South Korea	3	75
USA	3	104
Germany	2	8
Japan	2	48
Brunei	1	138
Greece	1	39
Italy	1	39
Malaysia	1	2
United Arab Emirates	1	7
United Kingdom	2	60
Total	31	873

^a A study can contribute data to more than one review question.

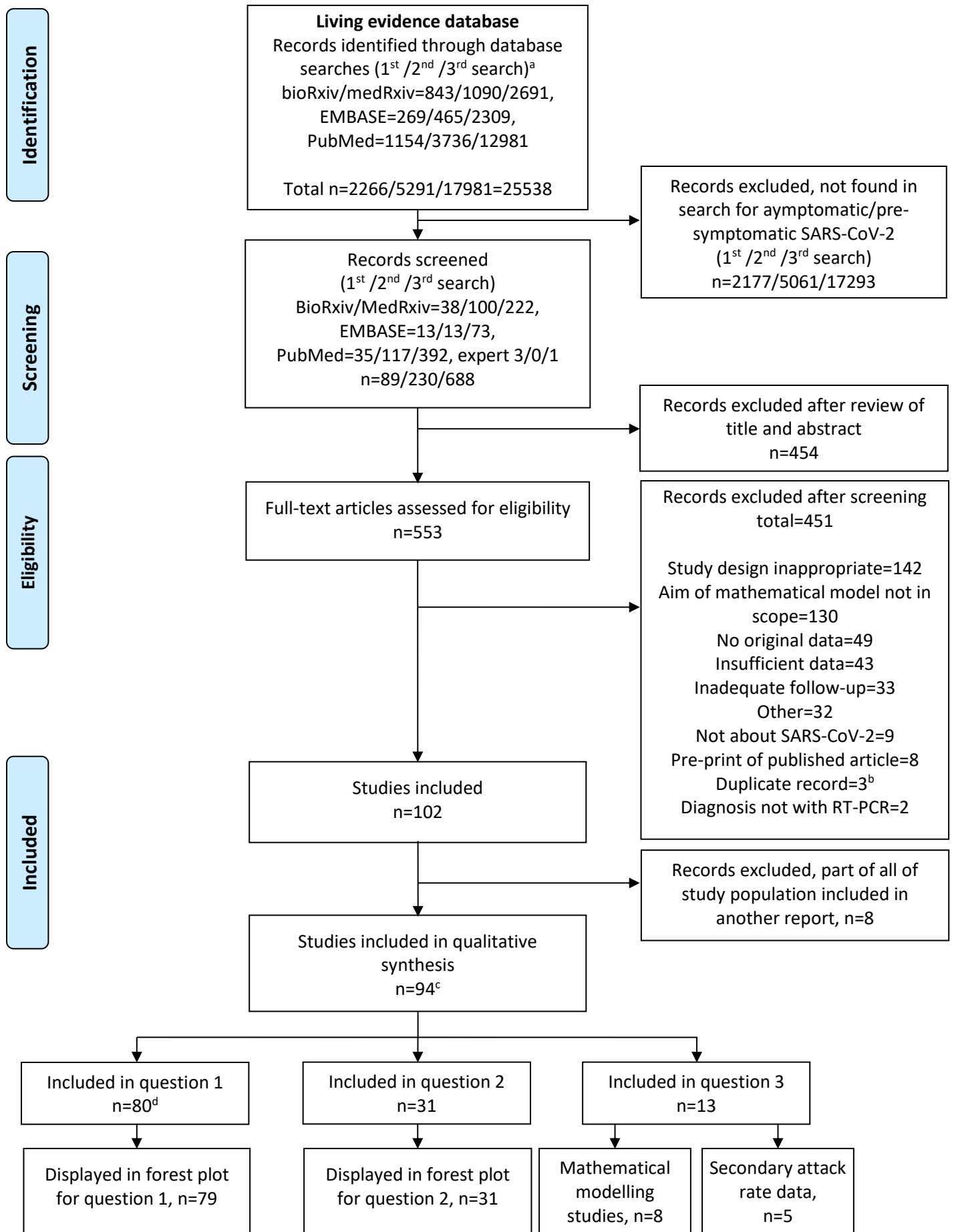


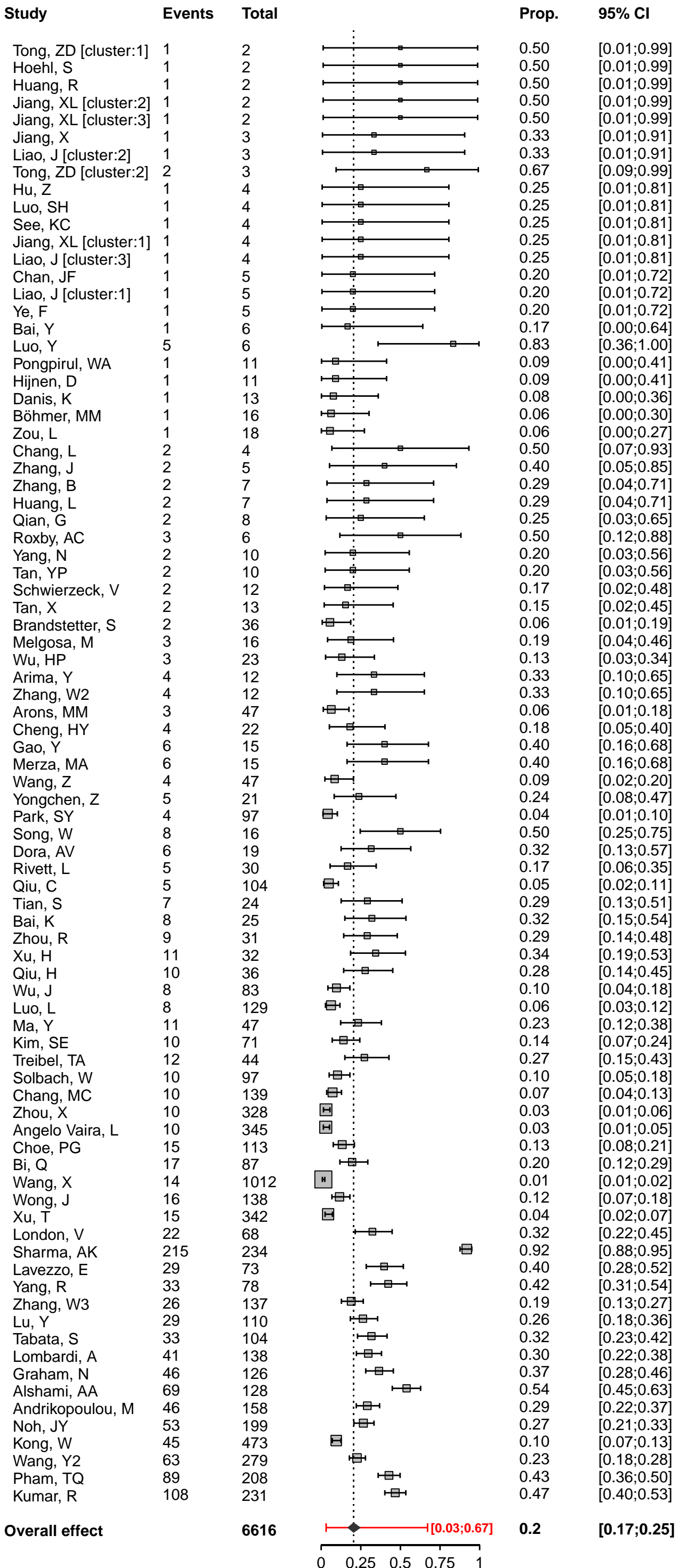
Figure S1. Flow chart of identified, excluded and included records as of 10 June 2020

^a Numbers of new records at each search: 1st search, 25.03.2020; 2nd search, 20.04.2020; 3rd search, 10.06.2020

^b Duplicate records are identical articles in different databases, found after automated de-duplication

^c 11 studies were included in the first review and 37 studies were included in the first update

^d Study by Mizumoto et al. in qualitative synthesis but not included in forest plot



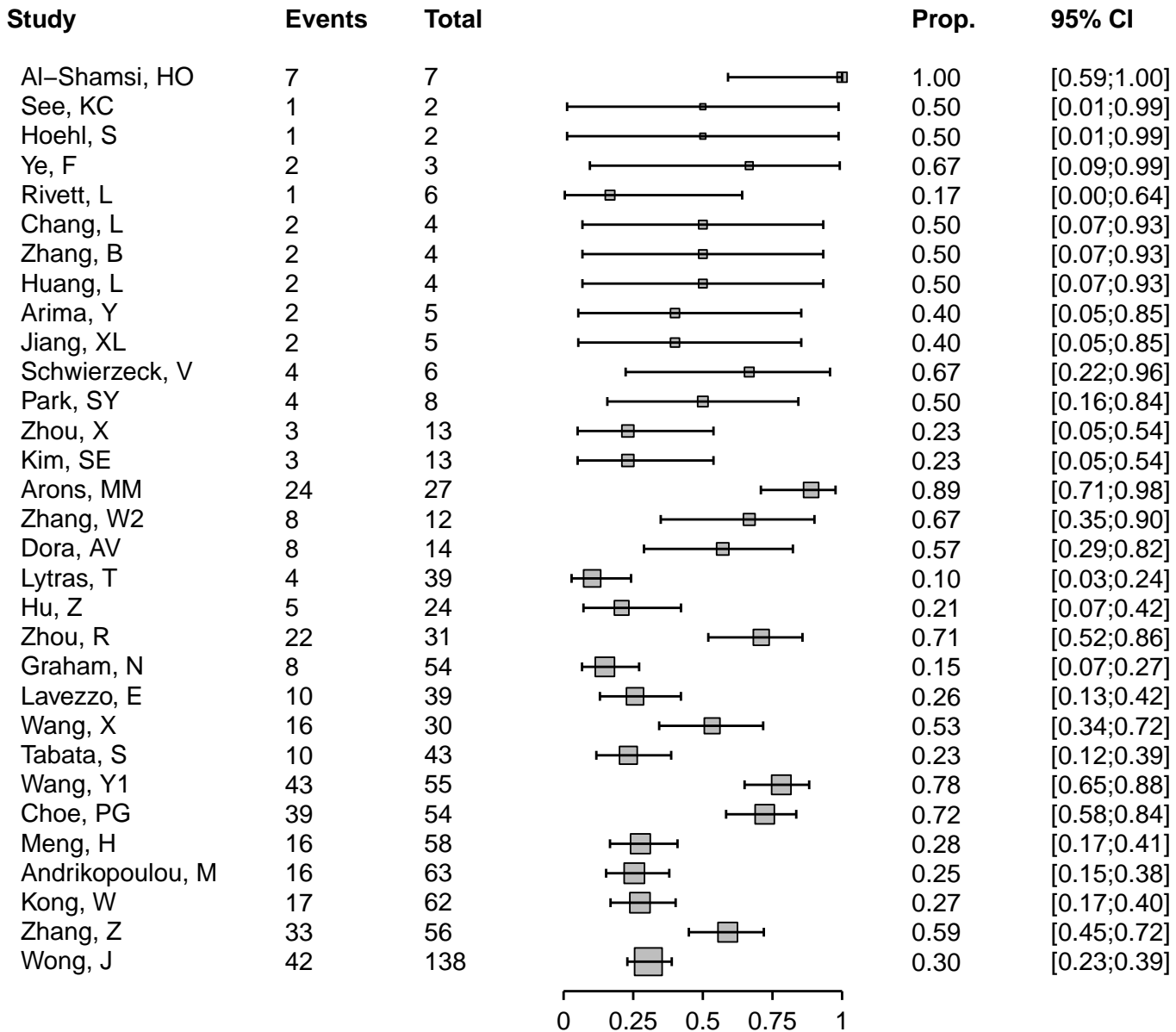
S2 Figure. Review question 1, forest plot of included studies, by study precision

The size of the shaded square is proportional to study size; solid diamond is the summary proportion and 95% confidence interval, estimated from random effects meta-analysis; red line is the prediction interval.

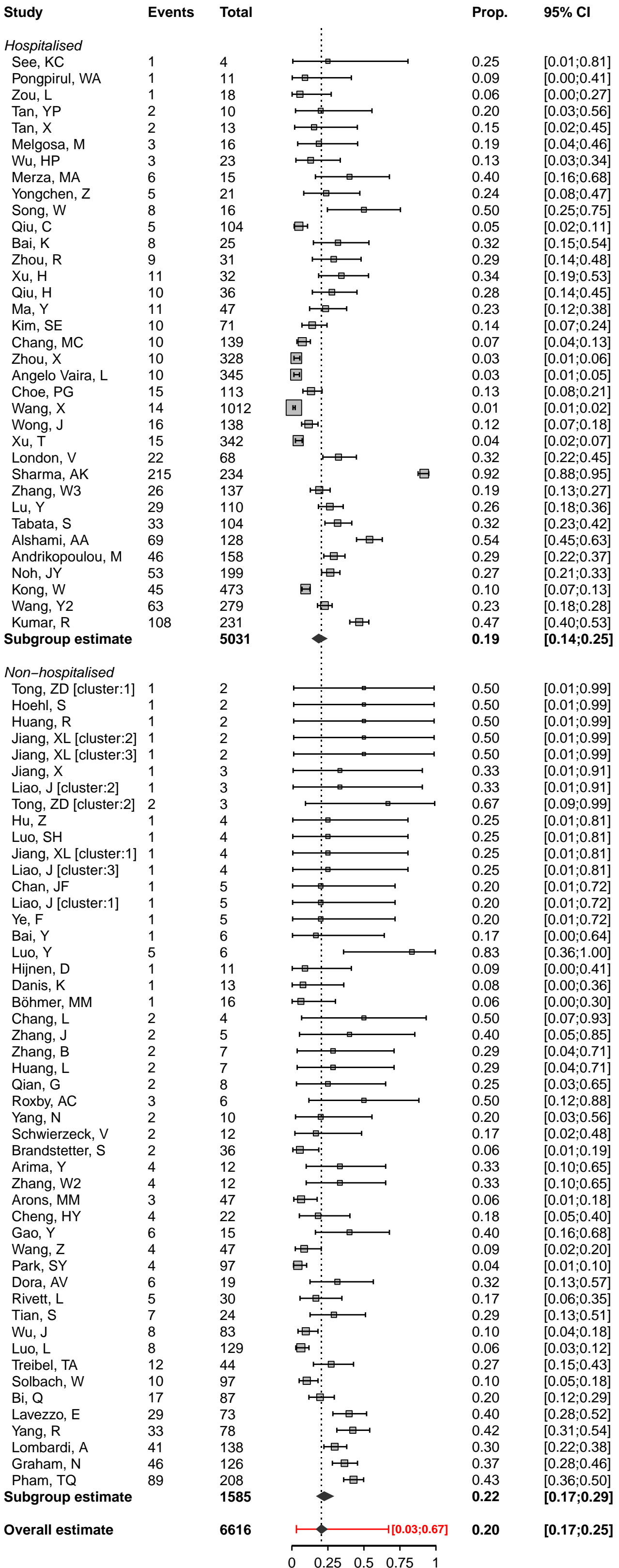
S3 Figure. Risk of bias and reporting quality of observational studies assessing proportion of asymptomatic and pre-symptomatic SARS-CoV-2 infection [11,12]

Author	1	2	3	4	5	6	7	8a	8b	9	10	11a	11b	12
	Clear criteria for inclusion	RT-PCR diagnosis for all participants	Asymptomatic status at start of follow-up	Consecutive inclusion of participants	Complete inclusion of participants	Reporting of the demographics of participants	Reporting of clinical information (symptoms)	Symptom status of cases at the end of follow-up	Adequate follow-up	Reporting of the site/clinic demographics	Numerator and denominator available	Study population adequate sample of the source population	Study population adequate sample of the target population	The assessment of the secondary attack rate was adequate and similar in all groups (low risk of)
Contact investigations														
Tong, ZD	Yes	Yes	Yes	Yes	Yes	Yes	Yes	Yes	Yes	Yes	Yes	Yes	No	NA
735: Huang, R	Yes	Yes	Yes	Yes	Yes	Yes	Yes	Yes	Yes	Yes	Yes	Yes	No	NA
344: Jiang, XL	Yes	Yes	Yes	Yes	Yes	Yes	Yes	Yes	Yes	Yes	Yes	Yes	No	NA
372: Jiang, X	Yes	Yes	Yes	Yes	Yes	Yes	No	Yes	Yes	Yes	Yes	Yes	No	NA
36: Liao, J	Yes	Yes	Yes	Yes	Yes	Yes	Yes	Yes	Yes	Yes	Yes	Yes	No	NA
22: Hu, Z	Yes	Yes	Yes	Yes	Yes	Yes	Yes	Yes	Yes	Yes	Yes	Yes	No	NA
42: Luo, SH	Yes	Yes	Yes	Yes	No	No	Yes	Yes	Yes	Yes	Yes	Yes	No	NA
11: Chan, JF	Yes	Yes	Yes	Yes	Yes	Yes	Yes	Yes	Yes	Yes	Yes	Yes	No	NA
180: Ye, F	Yes	Yes	Yes	Yes	Yes	Yes	Yes	Yes	Yes	Yes	Yes	Yes	No	NA
4: Bai, Y	Yes	Yes	Yes	Yes	Yes	No	Yes	Yes	Yes	Yes	Yes	Yes	No	NA
374: Luo, Y	Yes	Yes	Yes	Yes	Yes	No	Yes	Yes	Yes	Yes	Yes	Yes	No	NA
142: Zhang, J	Yes	Yes	Yes	Yes	Yes	No	Yes	Yes	Yes	Yes	Yes	Yes	No	NA
389: Zhang, B	Yes	Yes	Yes	Yes	Yes	Yes	Yes	Yes	Yes	Yes	Yes	Yes	No	NA
449: Huang, L	Yes	Yes	Yes	Yes	Yes	Yes	Yes	Yes	Yes	Yes	Yes	Yes	No	NA
54: Qian, G	Yes	Yes	Yes	Yes	Yes	No	Yes	Yes	Yes	No	Yes	Yes	No	NA
414: Gao, Y	Yes	Yes	Yes	Yes	Yes	Yes	No	Yes	Yes	Yes	Yes	Yes	No	NA
563: Chaw, L	Yes	Yes	Yes	Yes	Yes	Yes	Yes	Yes	Yes	Yes	Yes	Yes	No	NA
Contact investigations, aggregated														
599: Hijen, P	Yes	Yes	Yes	Yes	No	Yes	Yes	Yes	Yes	Yes	Yes	Yes	No	NA
665: Brandstetter, S	Yes	Yes	Yes	Yes	No	Yes	Yes	Yes	Yes	Yes	Yes	Yes	No	NA
821: Zhang, W2	Yes	Yes	Yes	Yes	Yes	No	Yes	Yes	Yes	Yes	Yes	Yes	Yes	Yes
477: Cheng, HY	Yes	Yes	Yes	Yes	Yes	No	No	Yes	Yes	Yes	Yes	Yes	Yes	Yes
249: Wang, Z	No	Yes	Yes	Unclear	No	No	Yes	Unclear	Unclear	Yes	Yes	Unclear	No	NA
597: Wu, J	Yes	Yes	Yes	Yes	Yes	No	Yes	Yes	Yes	Yes	Yes	Yes	No	NA
122: Luo, L	Yes	Yes	Yes	Yes	Yes	Yes	Yes	Yes	Yes	Yes	Yes	Yes	Yes	Yes
443: Bi, Q	Yes	Yes	Yes	Yes	No	No	Yes	Yes	Yes	Yes	Yes	Yes	Yes	NA
908: Yang, R	Yes	Yes	Yes	Yes	Yes	No	Yes	Yes	Yes	Yes	Yes	Yes	No	NA
Outbreak investigations														
242: Danis, K	Yes	Yes	Yes	Yes	Yes	No	Yes	Yes	Yes	Yes	Yes	Yes	No	NA
713: Böhmer, MM	Yes	Yes	Yes	Yes	Yes	No	Yes	Yes	Yes	Yes	Yes	Yes	Unclear	NA
763: Roxby, AC	Yes	Yes	Yes	Yes	No	No	Yes	Yes	Yes	Yes	Yes	Yes	No	NA
152: Yang, N	Yes	Yes	Yes	Yes	No	Yes	Yes	Yes	Yes	Yes	Yes	No	No	NA
396: Schwierzeck, V	Yes	Yes	Yes	Yes	No	Yes	Yes	Yes	Yes	Yes	Yes	Yes	No	NA
376: Arons, MM	Yes	Yes	Yes	Yes	Yes	No	No	Yes	Yes	Yes	Yes	Yes	No	NA
354: Park, SY	Yes	Yes	Yes	Yes	Yes	No	No	Yes	Yes	Yes	Yes	Yes	Yes	Yes
849: Dora, AV	Yes	Yes	Yes	Yes	Yes	Yes	Yes	Yes	Yes	Yes	Yes	Yes	No	NA
265: Tian, S	Yes	Yes	Yes	Yes	Yes	Yes	Yes	Yes	Yes	Yes	Yes	Yes	Yes	NA
899: Solbach, W	Yes	Yes	Yes	Yes	No	No	No	Yes	Yes	Yes	Yes	Yes	Yes	NA
1003: Graham, N	Yes	Yes	Yes	Yes	No	Yes	Yes	Yes	Yes	Yes	Yes	Yes	No	NA
696: Pham, TQ	Yes	Yes	Yes	Yes	Yes	No	No	Yes	Yes	Yes	Yes	Yes	Yes	NA
Screening														
317: Hoesli, S	Yes	Yes	Yes	Yes	Yes	No	No	Yes	Yes	Yes	Yes	Yes	No	NA
170: Chang, L	Yes	Yes	Yes	Yes	Yes	No	No	Yes	Yes	No	Yes	Yes	No	NA
224: Arima, Y	Yes	Yes	Yes	Yes	Yes	No	No	Yes	Yes	Yes	Yes	No	No	NA
598: Rivett, L	Yes	Yes	Yes	Yes	Yes	No	No	Yes	Yes	Yes	Yes	Yes	No	NA
622: Treibell, TA	Yes	Yes	Yes	Yes	No	No	No	Yes	Yes	No	Yes	Unclear	No	NA
294: Lavezzo, E	Unclear	Yes	Yes	Unclear	No	No	No	Yes	Yes	Yes	Yes	Yes	Unclear	NA
593: Lombardi, A	Yes	Yes	Yes	Yes	Yes	No	Yes	Yes	Yes	Yes	Yes	Yes	No	NA
278: Lytras, T	Yes	Yes	No	Yes	Yes	No	Yes	Yes	Yes	Yes	Yes	Yes	No	NA
Hospitalised adults														
204: Pongpirul, WA	Yes	Yes	Yes	Yes	Yes	Yes	Yes	Yes	Yes	Yes	Yes	Yes	No	NA
216: Zou, L	Yes	Yes	Yes	Yes	Unclear	Yes	Yes	Yes	Yes	Yes	Yes	Yes	Unclear	NA
521: Qiu, C	Yes	Yes	Yes	Yes	Yes	Yes	Yes	Yes	Yes	Yes	Yes	Yes	No	NA
761: Zhou, R	Yes	Yes	Yes	Yes	Yes	No	No	Yes	Yes	Yes	Yes	Unclear	No	NA
664: Chang, MC	Yes	Yes	Yes	Yes	Yes	Yes	No	Yes	Yes	Yes	Yes	Yes	No	NA
233: Zhou, X	Yes	Yes	Yes	Yes	Yes	Yes	Yes	Yes	Yes	Yes	Yes	Yes	No	NA
765: Angelo Vaira, L	Yes	Unclear	Yes	Yes	Yes	No	Yes	Yes	Yes	Yes	Yes	Yes	No	NA
187: Wang, X	Yes	Yes	Yes	Yes	Yes	Yes	Yes	Yes	Yes	Yes	Yes	Yes	No	NA
506: Wong, J	Yes	Yes	Yes	Yes	Yes	No	No	Yes	Yes	No	Yes	Yes	No	NA
434: Xu, T	Yes	Yes	Yes	Yes	Yes	Yes	Yes	Yes	Yes	Yes	Yes	Yes	No	NA
729: London, V	Yes	Yes	Yes	Yes	Unclear	No	Yes	Yes	Yes	Yes	Yes	Yes	No	NA
164: Tabata, S	Yes	Yes	Yes	Yes	Yes	Yes	Yes	No	Yes	Yes	Yes	No	No	NA
832: Andrikopoulou, M	Yes	Yes	Yes	Yes	Yes	No	Yes	Yes	Yes	Yes	Yes	Yes	No	NA
797: Noh, JY	Unclear	Yes	Yes	Unclear	Unclear	No	Yes	Yes	Yes	Yes	Yes	Yes	Unclear	NA
818: Kumar, R	Yes	Yes	Yes	Yes	No	Yes	Yes	Yes	Yes	Yes	Yes	Yes	No	NA
267: Meng, H	Yes	Yes	Yes	Yes	Unclear	Yes	Yes	Yes	Yes	Yes	Yes	Yes	No	NA
491: Zhang, Z	Yes	Yes	Yes	Yes	Yes	No	Yes	Yes	Yes	Yes	Yes	Yes	No	NA
834: Al-Shamsi, HO	Yes	Yes	Yes	Yes	Yes	Yes	No	Yes	Yes	Yes	Yes	Yes	No	NA
71: Wang, Y1	Yes	Yes	Yes	Yes	Yes	Yes	No	No	Yes	Yes	Yes	Yes	No	NA
Hospitalised children														
299: See, KC	Yes	Yes	Yes	Yes	Yes	Yes	Yes	Yes	Yes	Yes	Yes	Unclear	No	NA
275: Tan, YP	Yes	Yes	Yes	Yes	Yes	Yes	Yes	Yes	Yes	Yes	Yes	Yes	No	NA
334: Tan, X	Yes	Yes	Yes	Yes	Yes	Yes	Yes	Yes	Yes	Yes	Yes	Yes	No	NA
769: Melgosa, M	Yes	Yes	Yes	Yes	Yes	No	Yes	Yes	Yes	Yes	Yes	Yes	No	NA
843: Wu, HP	Yes	Yes	Yes	Yes	Yes	No	Yes	Yes	Yes	Yes	Yes	Yes	No	NA
481: Song, W	Yes	Yes	Yes	Yes	Unclear	Yes	Yes	Yes	Yes	Yes	Yes	Yes	No	NA
653: Bai, K	Yes	Yes	Yes	Yes	No	Yes	Yes	Yes	Yes	Yes	Yes	Yes	No	NA
382: Xu, H	Yes	Yes	Yes	Yes	Unclear	Yes	Yes	Yes	Yes	Unclear	Yes	Yes	No	NA
141: Qiu, H	Yes	Yes	Yes	Yes	Yes	Yes	Yes	Unclear	Unclear	Yes	Yes	Yes	No	NA
556: Lu, Y	Yes	Yes	Yes	Yes	Unclear	Yes	Yes	Yes	Yes	Yes	Yes	Yes	No	NA
Hospitalised adults and children														
637: Merza, MA	Yes	Yes	Yes	Yes	Yes	Yes	Yes	Yes	Yes	Yes	Yes	Yes	No	NA
328: Yongchen, Z	Yes	Yes	Yes	Yes	Yes	No	Yes	Yes	Yes	Yes	Yes	Yes	No	NA
585: Ma, Y	Yes	Yes	Yes	Yes	Yes	Yes	Yes	Yes	Yes	Yes	Yes	Yes	No	NA
559: Kim, SE	Yes	Yes	Yes	Yes	Yes	Yes	Yes	Yes	Yes	Yes	Yes	Yes	Unclear	NA
856: Choe, PG	Yes	Yes	Yes	Yes	No	Yes	Yes	Yes	Yes	Yes	Yes	No	No	NA
981: Sharma, AK	Yes	Yes	Yes	Yes	No	No	No	Yes	Yes	Yes	Yes	Yes	No	NA
745: Zhang, W3	Unclear	Yes	Yes	Yes	No	No	Yes	Yes	Yes	Yes	Yes	Unclear	No	NA
726: Alshami, AA	Yes	Yes	Yes	Yes	No	No	Yes	Yes	Yes	Yes	Yes	Yes	Unclear	NA
936: Kong, W	Yes	Yes	Yes	Yes	No	Yes	Yes	Yes	Yes	Yes	Yes	Yes	No	NA
778: Wang, Y2	Yes	Yes	Yes	Yes	Yes	Yes	Unclear	Yes	Yes	Yes	Yes	Yes	No	NA

Adapted from two published assessment tools, citations refer to reference list in main text.
 11. Joanna Briggs Institute checklist for case series, questions 1 to 10 (<http://joannabriggs.org/research/critical-appraisal-tools.html>)
 12. Boyle MH. Guidelines for evaluating prevalence studies. Evidence Based Men Health 1998;1:37-40, questions 11a and 11b
 Question 12 added by authors to assess risk of selection bias for participants in studies reporting secondary attack rate

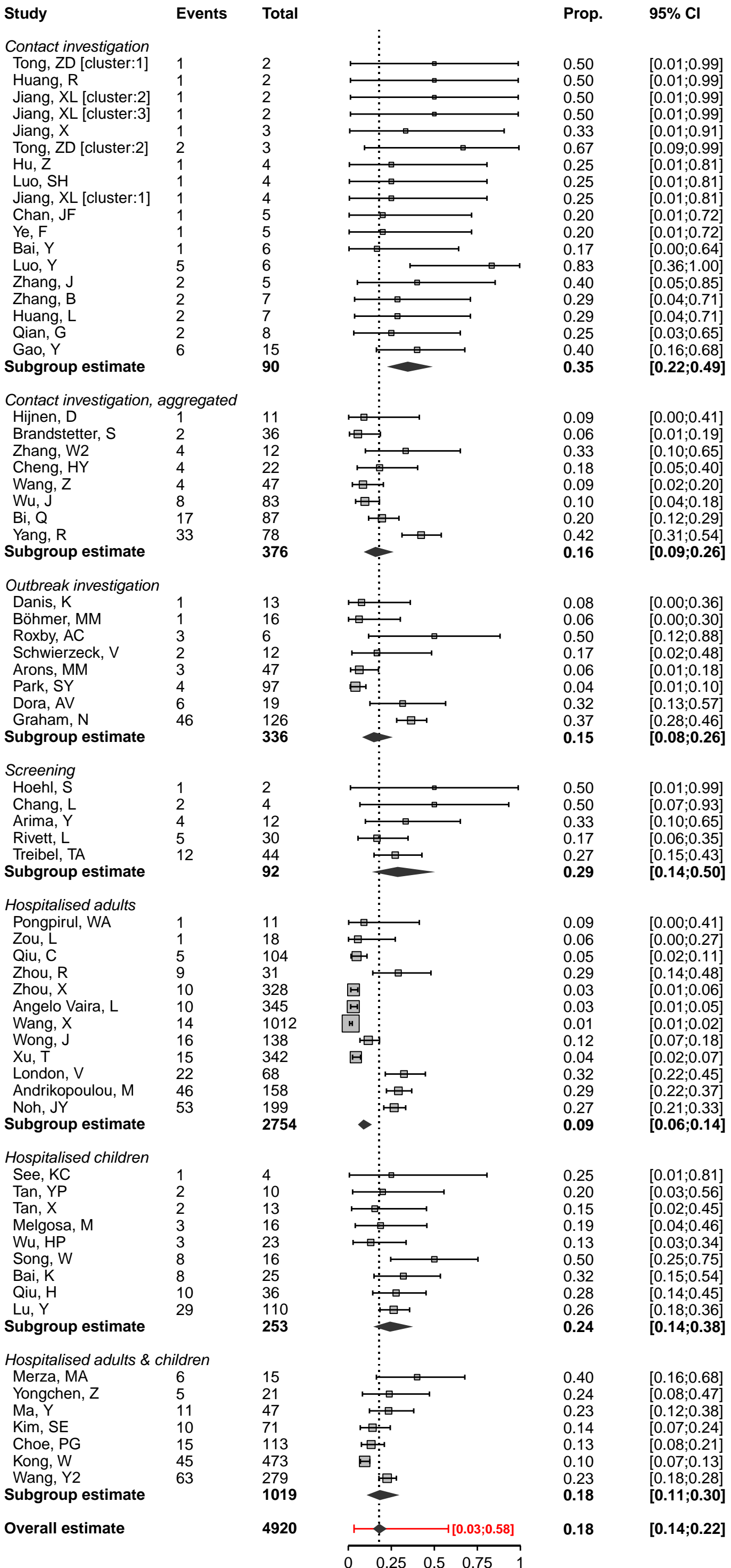


S4 Figure: Review question 2, forest plot of included studies, by study precision



S5 Figure: Review question 1, sub-group analysis comparing studies of hospitalised patients with all other settings

The size of the shaded square is proportional to study size; solid diamond is the summary proportion and 95% confidence interval, estimated from random effects meta-analysis; red line is the prediction interval.



S6 Figure. Review question 1, forest plot of included studies, published in peer-reviewed journal

The size of the shaded square is proportional to study size; solid diamond is the summary proportion and 95% confidence interval, estimated from random effects meta-analysis; red line is the prediction interval.

S7 Figure. Relevance and credibility of mathematical modelling studies assessing contribution of asymptomatic and pre-symptomatic infection to SARS-CoV-2 transmission

Author	1 Is the population relevant?	2 Are any critical interventions missing?	3 Is the context (settings and circumstances) applicable?	4 Is external validation of the model sufficient to make its results credible for your decision?	5 Is internal verification of the model sufficient to make its results credible for your decision?	6 Does the model have sufficient face validity to make its results credible for your decision?	7 Is the design of the model adequate for your decision problem?	8 Are the data used in populating the model suitable for your decision problem?	9 Were the analyses performed using the model adequate to inform your decision problem?	10 Was there an adequate assessment of the effects of uncertainty?	11 Was the reporting of the model adequate to inform your decision problem?	12 Was the interpretation of results fair and balanced?	13 Were there any potential conflicts of interest?
Ferretti, L	Partial	NA	Yes	No	Yes	Yes	Yes	Partial	Yes	Yes	Yes	No	No
Ganyani, T	Partial	NA	Yes	No	Yes	Yes	Yes	Partial	Yes	Partial	Yes	Partial	No
Zhang, W	Partial	NA	Yes	No	Yes	No	Partial	Partial	No	No	No	No	Unclear
He, X	Partial	NA	Yes	No	Yes	Yes	Yes	Partial	Yes	Yes	Partial	Yes	No
Emery, JC	Partial	NA	Yes	Partial	Yes	Yes	Partial	Partial	Yes	Yes	Yes	Yes	No
Casey, M	Yes	NA	Yes	Partial	Yes	Partial	Yes	Yes	Partial	Yes	Yes	Yes	No
Kim, Y	Partial	NA	Yes	No	Yes	Yes	Yes	Partial	Yes	Yes	Yes	Partial	No
Peak, CM	Yes	NA	Partial	No	Yes	Partial	Yes	No	Partial	Partial	Partial	Yes	No

Checklist from ref 13. Jaime Caro J, et al. Value Health 2014;17:174-82.

Partial: item is partially addressed

NA: Not applicable

PRISMA 2009 Checklist

Section/topic	#	Checklist item	Reported by section, in paragraph #
TITLE			
Title	1	Identify the report as a systematic review, meta-analysis, or both.	Title
ABSTRACT			
Structured summary	2	Provide a structured summary including, as applicable: background; objectives; data sources; study eligibility criteria, participants, and interventions; study appraisal and synthesis methods; results; limitations; conclusions and implications of key findings; systematic review registration number.	Abstract
INTRODUCTION			
Rationale	3	Describe the rationale for the review in the context of what is already known.	1-2
Objectives	4	Provide an explicit statement of questions being addressed with reference to participants, interventions, comparisons, outcomes, and study design (PICOS).	3
METHODS			
Protocol and registration	5	Indicate if a review protocol exists, if and where it can be accessed (e.g., Web address), and, if available, provide registration information including registration number.	1
Eligibility criteria	6	Specify study characteristics (e.g., PICOS, length of follow-up) and report characteristics (e.g., years considered, language, publication status) used as criteria for eligibility, giving rationale.	3
Information sources	7	Describe all information sources (e.g., databases with dates of coverage, contact with study authors to identify additional studies) in the search and date last searched.	2
Search	8	Present full electronic search strategy for at least one database, including any limits used, such that it could be repeated.	2, S1 Text
Study selection	9	State the process for selecting studies (i.e., screening, eligibility, included in systematic review, and, if applicable, included in the meta-analysis).	4
Data collection process	10	Describe method of data extraction from reports (e.g., piloted forms, independently, in duplicate) and any processes for obtaining and confirming data from investigators.	4

PRISMA 2009 Checklist

Data items	11	List and define all variables for which data were sought (e.g., PICOS, funding sources) and any assumptions and simplifications made.	4
Risk of bias in individual studies	12	Describe methods used for assessing risk of bias of individual studies (including specification of whether this was done at the study or outcome level), and how this information is to be used in any data synthesis.	6
Summary measures	13	State the principal summary measures (e.g., risk ratio, difference in means).	5
Synthesis of results	14	Describe the methods of handling data and combining results of studies, if done, including measures of consistency (e.g., I^2) for each meta-analysis.	7
Risk of bias across studies	15	Specify any assessment of risk of bias that may affect the cumulative evidence (e.g., publication bias, selective reporting within studies).	Not done
Additional analyses	16	Describe methods of additional analyses (e.g., sensitivity or subgroup analyses, meta-regression), if done, indicating which were pre-specified.	7
RESULTS			
Study selection	17	Give numbers of studies screened, assessed for eligibility, and included in the review, with reasons for exclusions at each stage, ideally with a flow diagram.	1, S1 Fig
Study characteristics	18	For each study, present characteristics for which data were extracted (e.g., study size, PICOS, follow-up period) and provide the citations.	Table 1, Table 2
Risk of bias within studies	19	Present data on risk of bias of each study and, if available, any outcome level assessment (see item 12).	3, S3 Fig, S7 Fig
Results of individual studies	20	For all outcomes considered (benefits or harms), present, for each study: (a) simple summary data for each intervention group (b) effect estimates and confidence intervals, ideally with a forest plot.	Fig 1, Fig 2, Fig 3, Fig 4
Synthesis of results	21	Present results of each meta-analysis done, including confidence intervals and measures of consistency.	4, 5, 6
Risk of bias across studies	22	Present results of any assessment of risk of bias across studies (see Item 15).	Not done
Additional analysis	23	Give results of additional analyses, if done (e.g., sensitivity or subgroup analyses, meta-regression [see Item 16]).	8
DISCUSSION			
Summary of evidence	24	Summarize the main findings including the strength of evidence for each main outcome; consider their relevance to key groups (e.g., healthcare providers, users, and policy makers).	1, 5-7

PRISMA 2009 Checklist

Limitations	25	Discuss limitations at study and outcome level (e.g., risk of bias), and at review-level (e.g., incomplete retrieval of identified research, reporting bias).	3
Conclusions	26	Provide a general interpretation of the results in the context of other evidence, and implications for future research.	8
FUNDING			
Funding	27	Describe sources of funding for the systematic review and other support (e.g., supply of data); role of funders for the systematic review.	Metadata

From: Moher D, Liberati A, Tetzlaff J, Altman DG, The PRISMA Group (2009). Preferred Reporting Items for Systematic Reviews and Meta-Analyses: The PRISMA Statement. PLoS Med 6(6): e1000097. doi:10.1371/journal.pmed1000097