

Supplementary Material

Page:

- 1** **List of Online Materials**
- 2** **Table s1** Demographics
- 3** **Table s2** Clinical data on Hospitalized Subjects
- 4** **Figure s1** Proportional cell type breakdown across clinical phenotypes and time
- 5** **Figure s2** Dysregulated biological pathways in COVID-19.

Table s1: Demographics of study population

	COVID-19	Others
Gender:		
Male	24 (52%)	56 (51%)
Female	22 (48%)	52 (49%)
Age (range):		
	45.8 (20-91)	29 (18-87)
Race, n (%)		
Native American	1 (2%)	2 (2%)
Asian	6 (13%)	16 (15%)
African American	10 (21%)	31 (29%)
White	28 (61%)	54 (50%)
Other	1 (2%)	5 (5%)

Table s2: Clinical data on Hospitalized Subjects

	1	2	3	4	5	6	7	8	9	10	11	12
Age (years)	60	91	64	76	69	33	88	69	59	71	31	67
Sex	Male	Female	Male	Male	Male	Male	Female	Female	Male	Male	Female	Male
Race	Black	Black	White	White	Black	White	Black	Black	Black	Black	Black	Black
Ethnicity	Non-hispanic	Non-hispanic	Non-hispanic	Non-hispanic	Non-hispanic	Non-hispanic	Non-hispanic	Non-hispanic	Non-hispanic	Non-hispanic	Unknown	Non-hispanic
Chronic medical conditions	CKD	COPD, CAD, HTN, obesity, sleep apnea	aortic aneurysm, CAD, CVA, HTN, obesity, prior tobacco use	Asthma, CAD, diabetes, HTN, prostate cancer	CAD, CKD, CVA, diabetes, HTN	None	CAD, CVA, HTN, obesity, pulmonary emboli	CVA, HTN, obesity, reactive airways, SLE	diabetes, HTN, obesity, sleep apnea	HTN, multiple sclerosis, post-traumatic stress disorder, tobacco use	Pregnancy, sleep apnea, prior tobacco use	Diabetes, heart failure, HTN, obesity, paraplegia, vascular disease
Days of symptoms prior to enrollment	13	7	14	3	2	9	14	5	16	1	18	11
O2 at enrollment	0-1L	1-2L	0L	0-2L	1-3L	0-1L	0L	0L	1L	6L	50% FiO2	45% FiO2
Initial therapy	None	Remdesivir	None	None	HCQ/azithromycin	HCQ	None	None	Remdesivir	None	HCQ, remdesivir, tocilizumab	None
Days on therapy prior to enrollment	--	1	--	--	1	0	--	--	3	--	9	--
Duration of hospitalization (days)	3	11	3	7	3	1	21	3	8	13	43	42
ICU	No	No	No	No	No	No	No	No	Yes	Yes	Yes	Yes
Mechanical Ventilation	No	No	No	No	No	No	No	No	No	No	Yes	Yes
Deceased	No	Yes	No	Yes	Yes	No	No	No	No	No	No	No

CAD: coronary artery diseases, CKD: chronic kidney disease, COPD: chronic obstructive pulmonary disease, CVA: cerebrovascular accident, HTN: hypertension, SLE: systemic lupus erythematosus, HCQ: hydroxychloroquine

Figure s1: Proportional cell type breakdown across clinical phenotypes and time

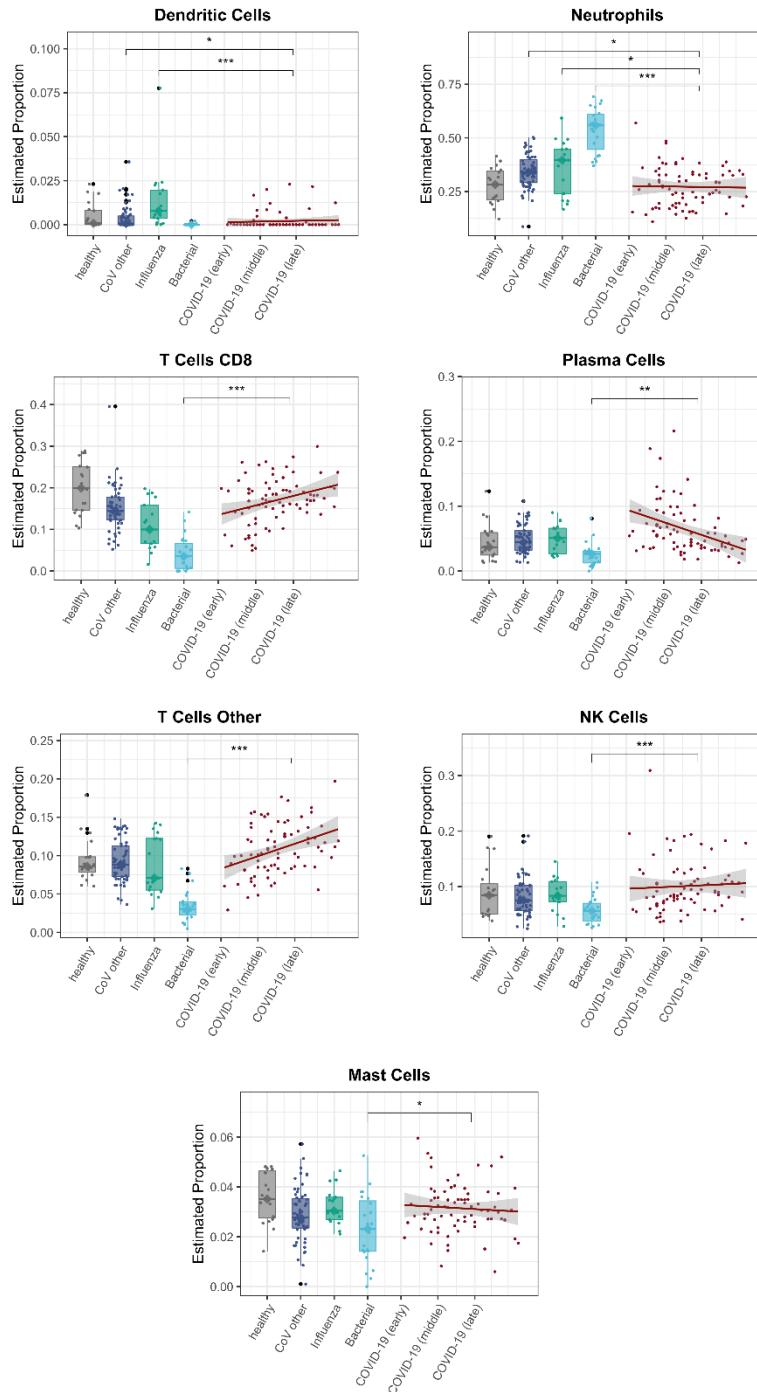
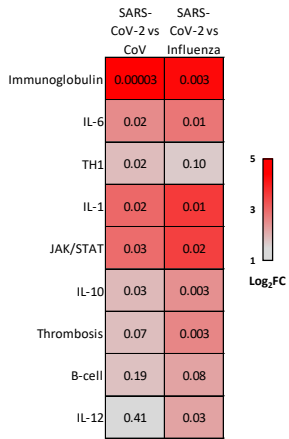


Figure s2: Dysregulated biological pathways in COVID-19. Log₂FC change in the principle component of each biological pathway (A, color) demonstrates differences all COVID-19 and other viral infections, with p-values noted for each comparison. Changes in the principle component of relevant biological pathways in subjects with COVID-19 over time are also depicted (B).

A



B

