

Supplementary Data

Sample	D17S800	D17S1320	D17S1321	D17S855	D17S1323	D17S1327	D17S1326	D17S1325	D17S791
P01	166	171	151	147	151	129	105	201	161
P02	166	171	151	147	151	129	105	201	161
P03	166	171	151	147	151	129	105	201	161
P04	166	171	151	147	151	129	105	201	161
P05	166	171	151	147	151	129	105	201	169
P06	166	171	151	147	151	129	105	201	174
P07	166	171	151	147	151	129	105	197	161
P08	166	171	151	147	151	129	105	202	161
P09	166	171	151	147	150	129	105	201	161
P10	166	171	151	149	151	129	105	201	161
P11	166	171	150	147	151	129	105	201	161
P12	166	171	150	147	151	129	105	201	161
P13	166	171	148	147	151	129	105	201	161
P14	166	171	151	147	151	129	105	199	180
P15	166	171	151	147	151	129	103	201	175
P16	166	171	151	147	151	129	103	199	161
P17	166	171	150	147	151	129	105	201	174
P18	166	171	149	147	151	129	105	201	176
P19	166	171	152	147	151	129	105	201	174
P20	166	171	150	147	151	129	105	201	174
P21	166	171	150	147	151	129	105	201	174
P22	166	171	150	147	151	129	105	193	161
P23	166	171	150	147	151	128	105	201	161
P24	170	171	151	144	151	129	105	201	161
P25	170	171	150	147	151	129	105	201	161
P26	166	171	151	147	151	129	103	199	176
P27	166	171	151	147	150	129	104	201	174
P28	170	171	151	147	150	128	105	201	161
P29	166	171	151	145	151	129	105	199	186
P30	166	171	150	147	151	129	103	199	182
P31	166	171	149	147	151	128	103	201	177
freq_control	0.51	0.55	0.1	0.34	0.52	0.61	0.09	0.01	0.25
freq_case	0.726	0.823	0.306	0.71	0.774	0.806	0.468	0.468	0.29
P-value	0.01069	0.0007361	0.002219	0.00001009	0.002147	0.01458	1.014E-07	1.422E-12	0.7025
Mb	2.141551	0.417813	0.244314	0.006935	0.040235	0.177651	0.187296	0.337722	3.658456

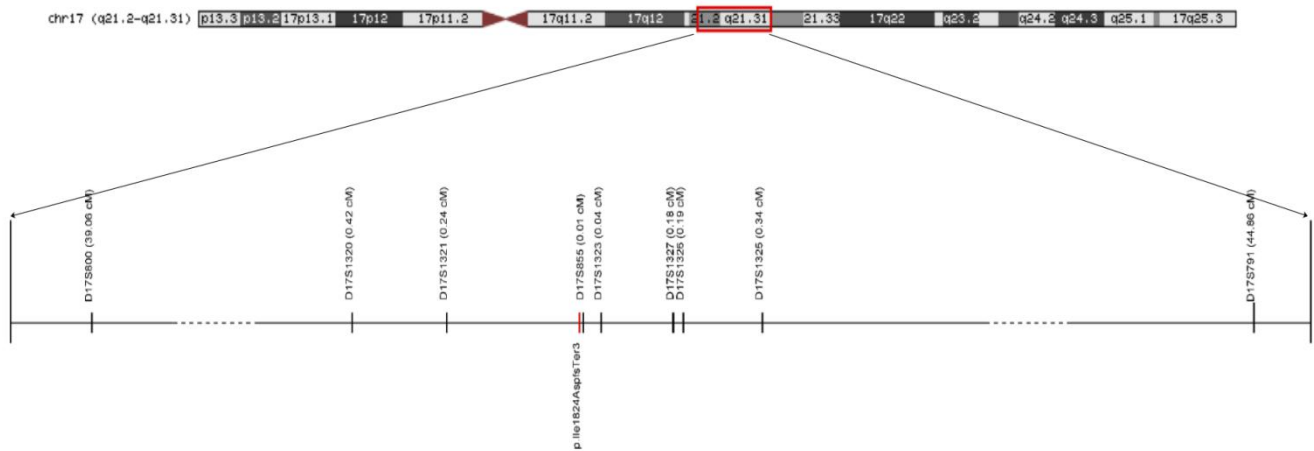
Table S1. Most likely haplotype analysis of BRCA1 c.5470_5477delATTGGCA mutation patinets carriers

The numbers equal to the amplicon size containing the STR markers.

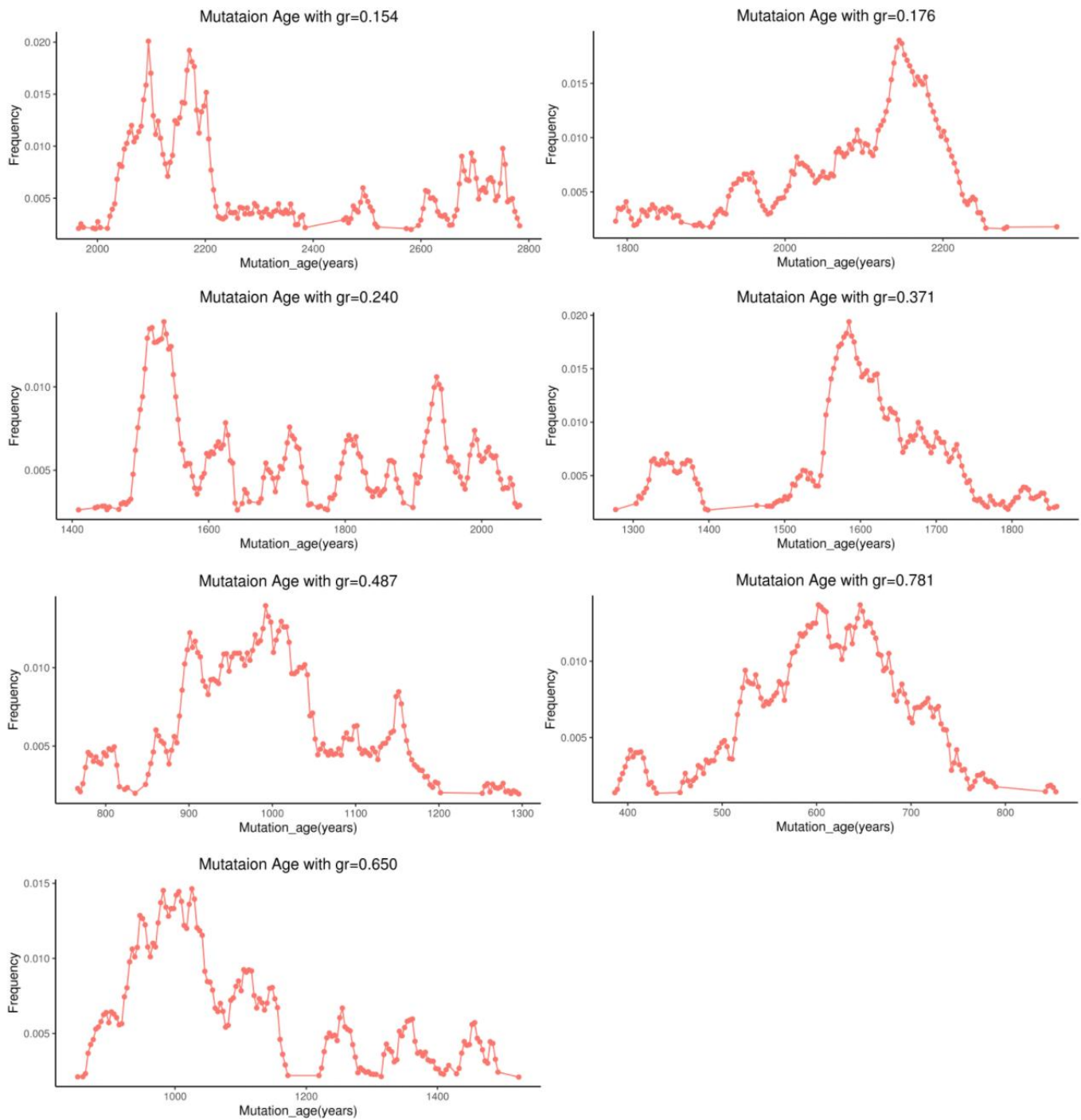
The parts of the likely ancestral haplotype shared by all patients are indicated in shades.

freq_case/control: frequency of the allele shared by the patients and the control sample;

Mb: Physical distance in Mb obtained from UCSC Genome Browser.



Supplementary Figure S1. Genetic map of the nine STR markers used in the haplotype analysis of BRCA1:c.5470_5477del (p.Ile1824AspfsTer3).



Supplementary Figure S2. Age estimation of BRCA1:c.5470_5477del. Seven different growth rates (gr, %) were used together with the haplotype profiles as input to DMLE+2.3, and a distribution of mutation age vs probability (frequency) was estimated for each simulation. Highest probability was achieved at gr = 0.154%, for which the estimated mutation age was 2090 years.