

Supplemental Appendix

Genetic drift and environmental spreading dynamics of COVID-19

Roberta Di Pietro, MD, Professor ¹, Mariangela Basile, PhD ¹, Laura Antolini, PhD, Professor ² and Saverio Alberti, MD, PhD, Professor ³ *

¹ Department of Medicine and Aging Sciences, Section of Biomorphology, G. d'Annunzio University of Chieti-Pescara, Italy. Email: r.dipietro@morpho.unich.it, mariangelabasile@hotmail.it

² Center for Biostatistics, Department of Clinical Medicine, Prevention and Biotechnology, University of Milano-Bicocca, Monza, Italy. Email: laura.antolini@unimib.it

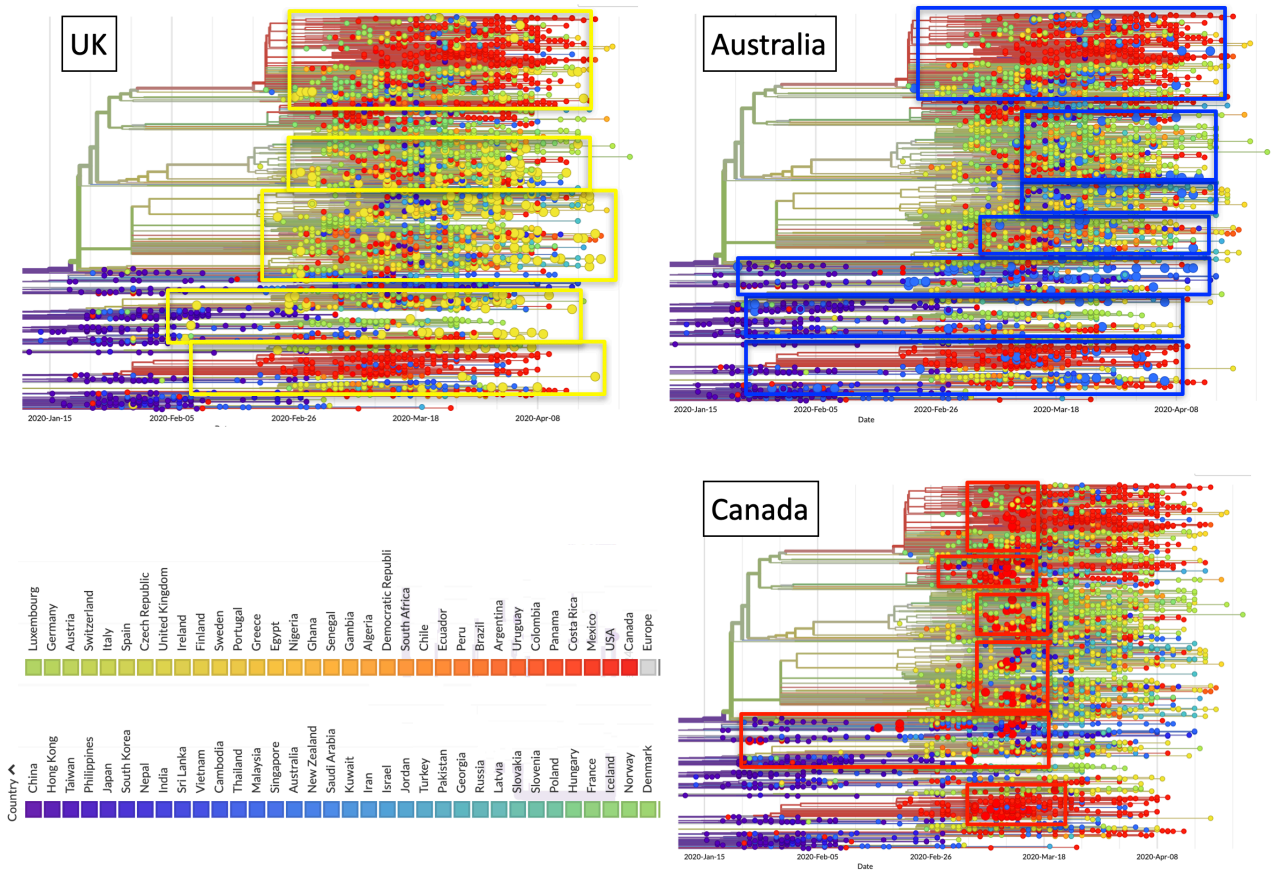
³ Unit of Medical Genetics, Department of Biomedical Sciences - BIOMORF, University of Messina, via Consolare Valeria, Messina, Italy. Email: salberti@unime.it

⁴ Contributed equally to this article.

* Address reprint requests to Prof. Alberti at the Unit of Medical Genetics, Department of Biomedical Sciences - BIOMORF, University of Messina, via Consolare Valeria, Messina, Italy, or at salberti@unime.it.

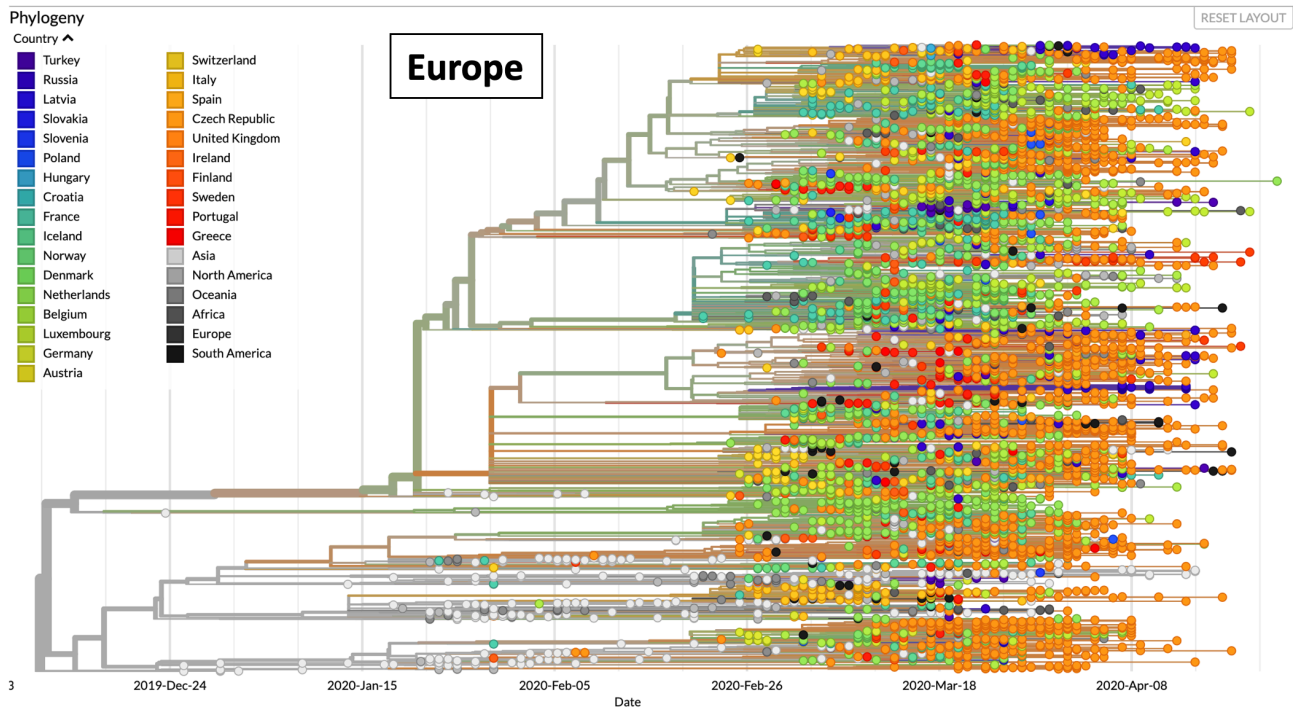
Supplemental Figures

Figure S1. Global accumulation of genomic mutations of SARS-CoV-2.



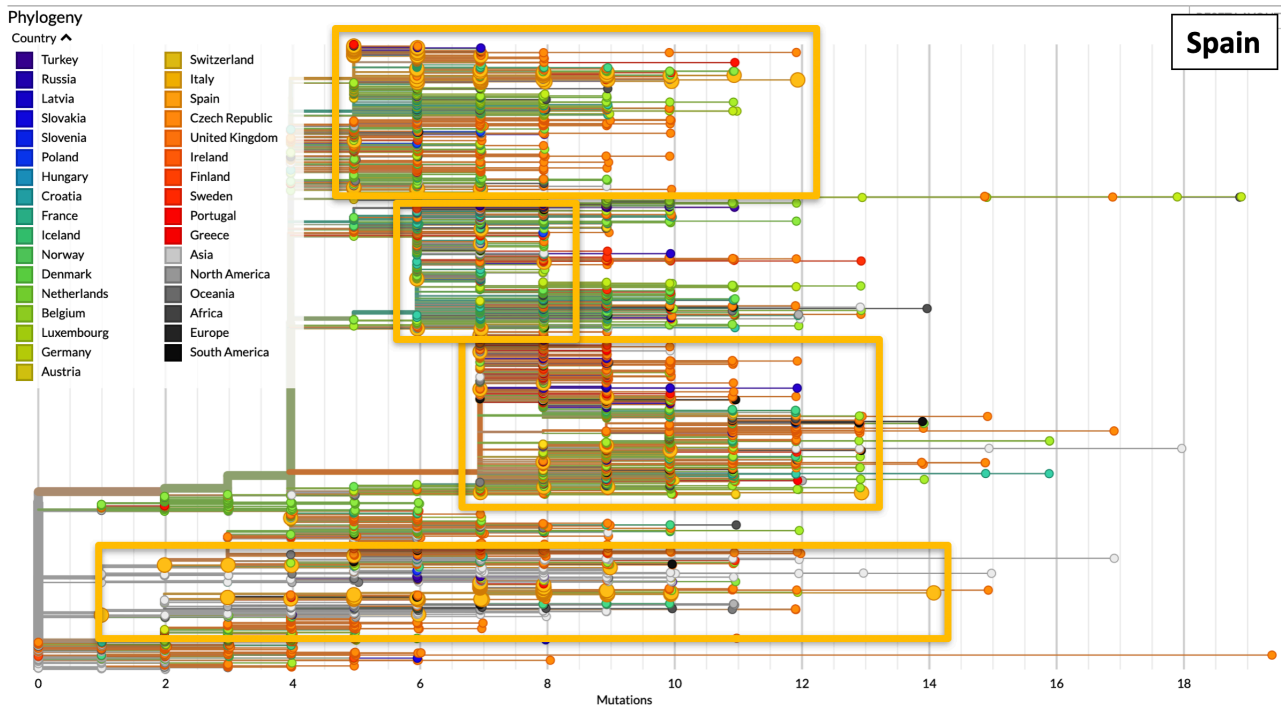
Accumulation of genomic mutations of SARS-CoV-2 over time around the globe is shown as strings-of-beads graphs. Each bead corresponds to a newly-described mutation. Larger beads indicate mutations identified in the indicated country. UK: bright yellow; Australia: blue; Canada: red. Rectangles enclose mutations by country. Color codes by country are shown at the bottom left.

Figure S2. Genomic mutations of SARS-CoV-2 in Europe.



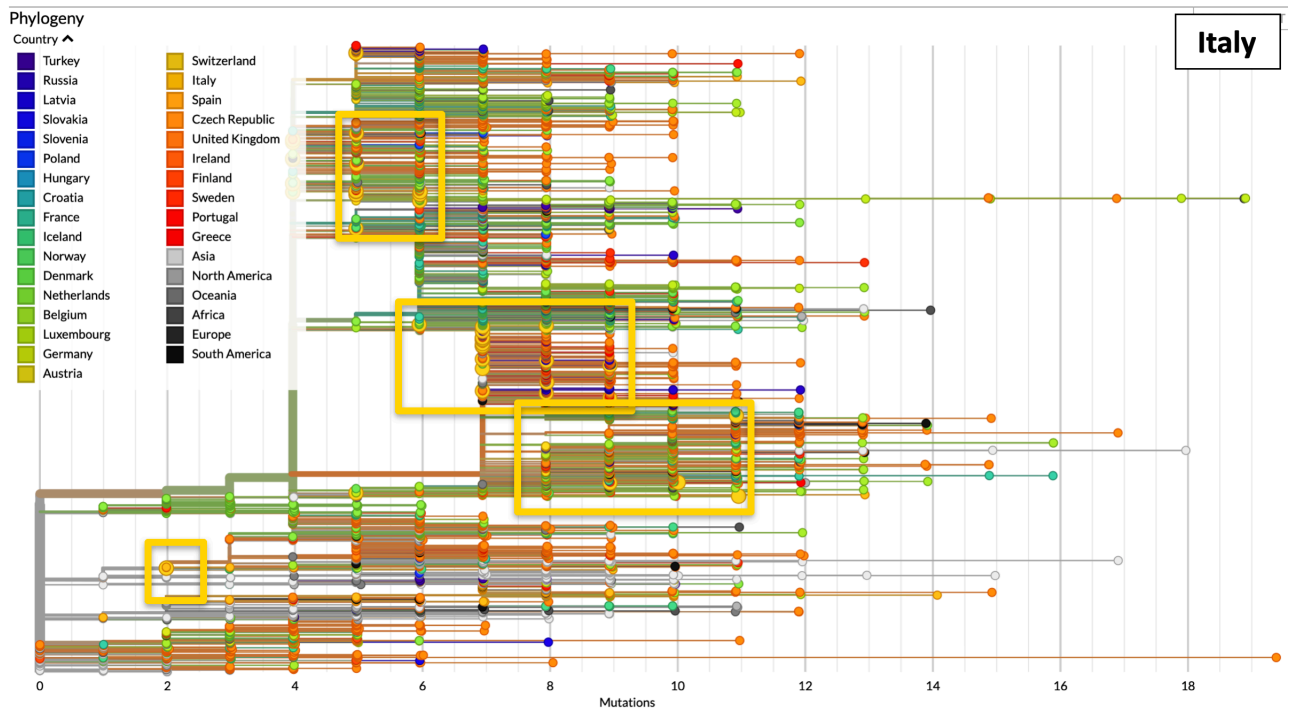
Accumulation of genomic mutations of SARS-CoV-2 over time in Europe is shown as strings-of-beads graphs. Each bead corresponds to a newly-described mutation. Color codes by country are shown on the upper left. Color codes by country are shown in the upper left.

Figure S3. Genomic mutations of SARS-CoV-2 - Spain.



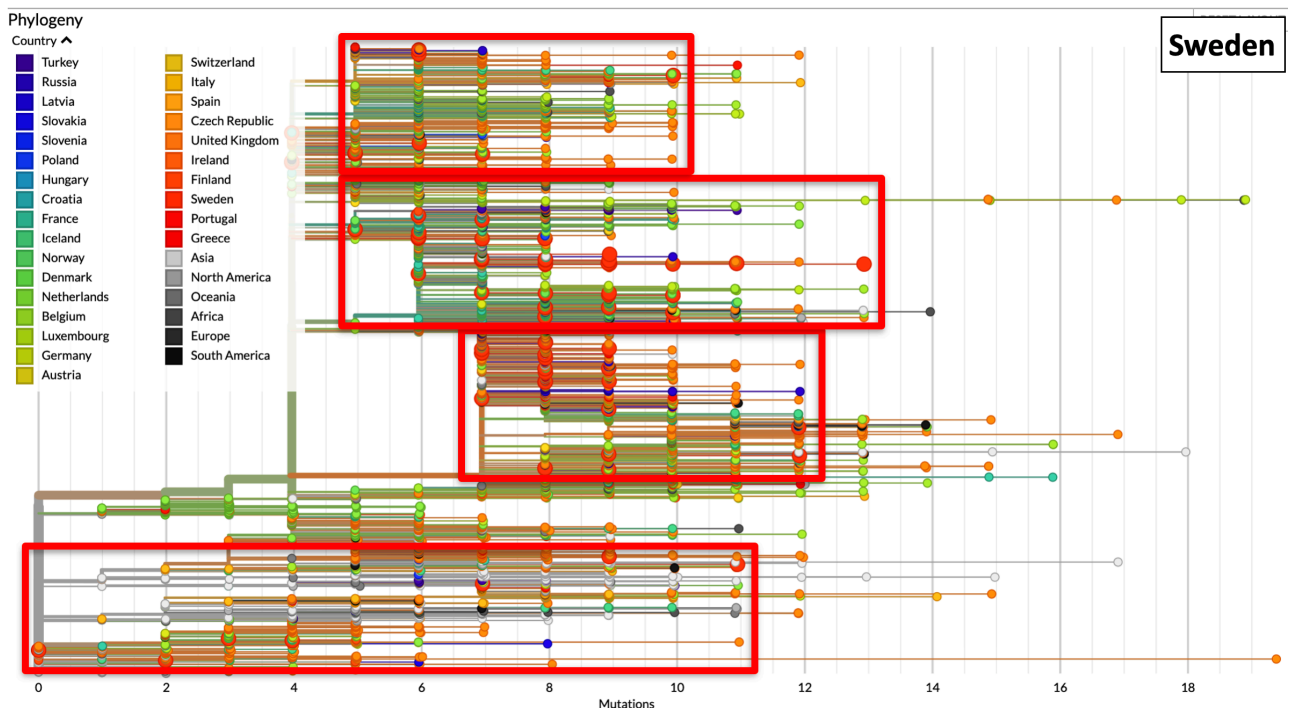
Accumulation of genomic mutations of SARS-CoV-2 over time in Spain is shown as strings of dark-yellow large dots. Rectangles enclose strings of mutations in each phylogenetic branch. The number of accumulated mutations in each viral isolate is indicated at the bottom. Color codes by country are shown in the upper left.

Figure S4. Genomic mutations of SARS-CoV-2 - Italy.



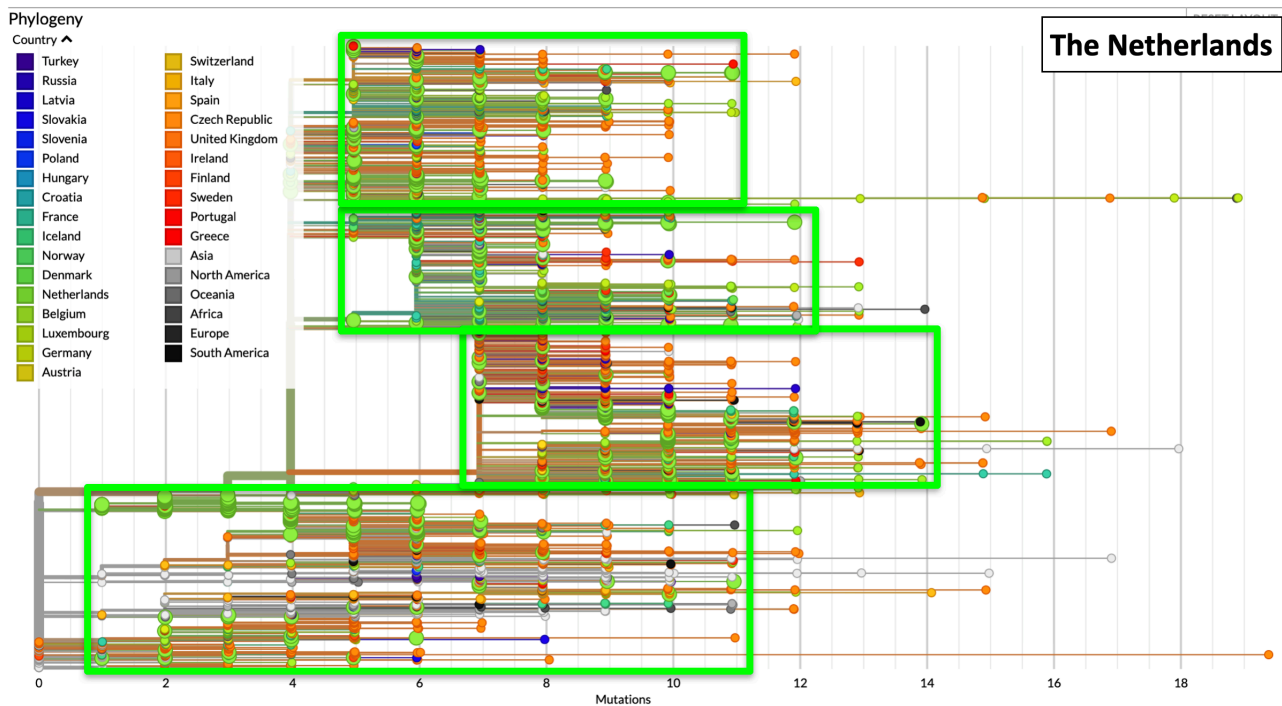
Accumulation of genomic mutations of SARS-CoV-2 over time in Italy is shown as strings of yellow large dots. Rectangles enclose strings of mutations in each phylogenetic branch. The number of accumulated mutations in each viral isolate is indicated at the bottom. Color codes by country are shown in the upper left.

Figure S5. Genomic mutations of SARS-CoV-2 - Sweden.



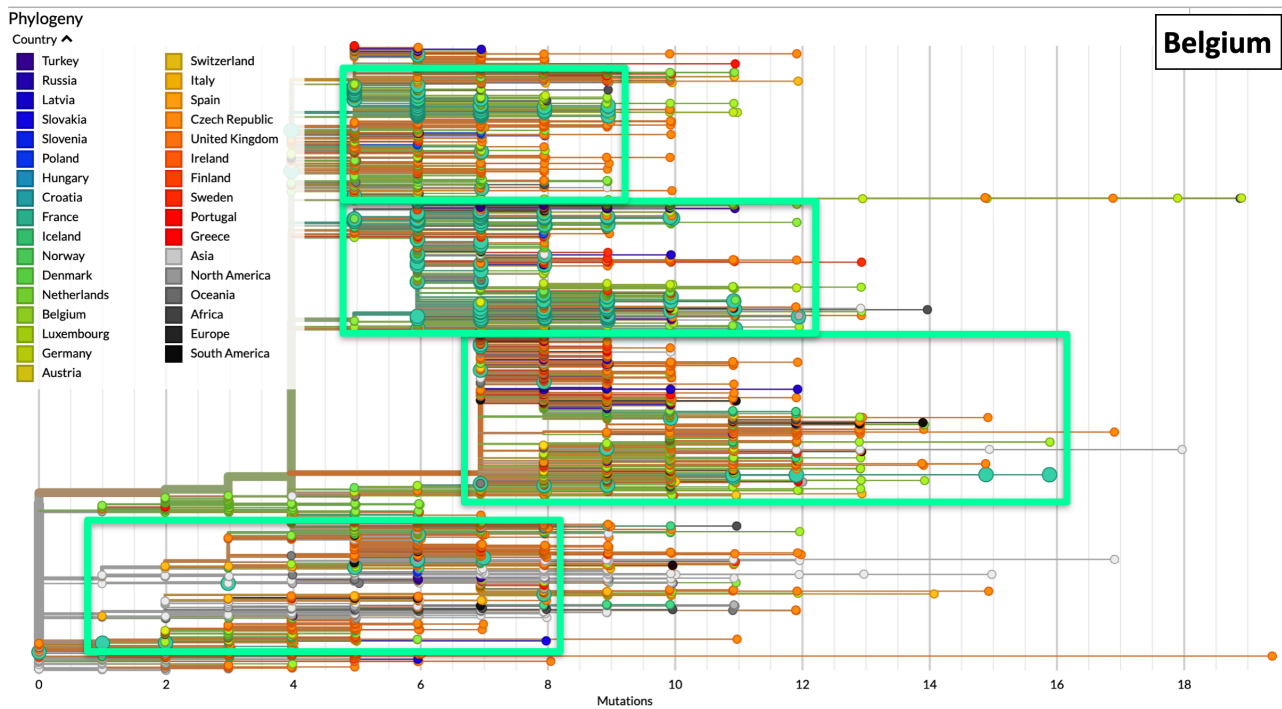
Accumulation of genomic mutations of SARS-CoV-2 over time in Sweden is shown as strings of red large dots. Rectangles enclose strings of mutations in each phylogenetic branch. The number of accumulated mutations in each viral isolate is indicated at the bottom. Color codes by country are shown in the upper left.

Figure S6. Genomic mutations of SARS-CoV-2 - The Netherlands.



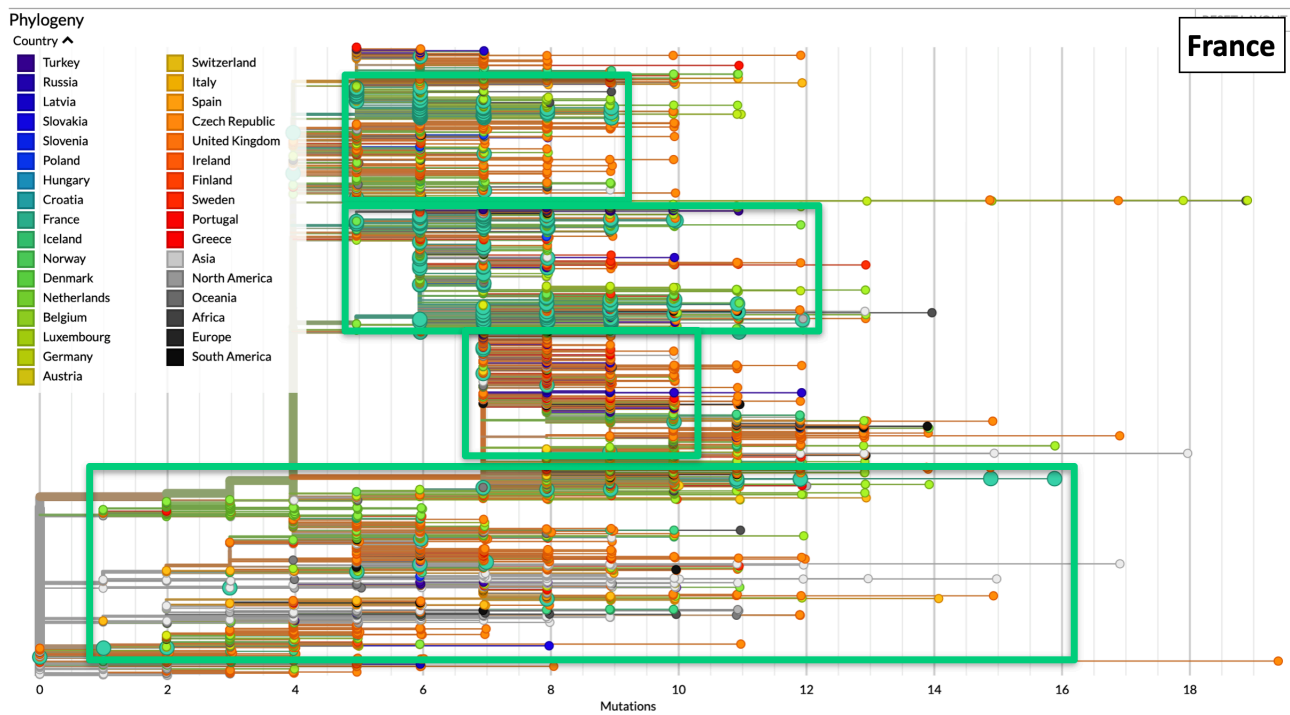
Accumulation of genomic mutations of SARS-CoV-2 over time in The Netherlands is shown as strings of bright-green large dots. Rectangles enclose strings of mutations in each phylogenetic branch. The number of accumulated mutations in each viral isolate is indicated at the bottom. Color codes by country are shown in the upper left.

Figure S7. Genomic mutations of SARS-CoV-2 - Belgium.



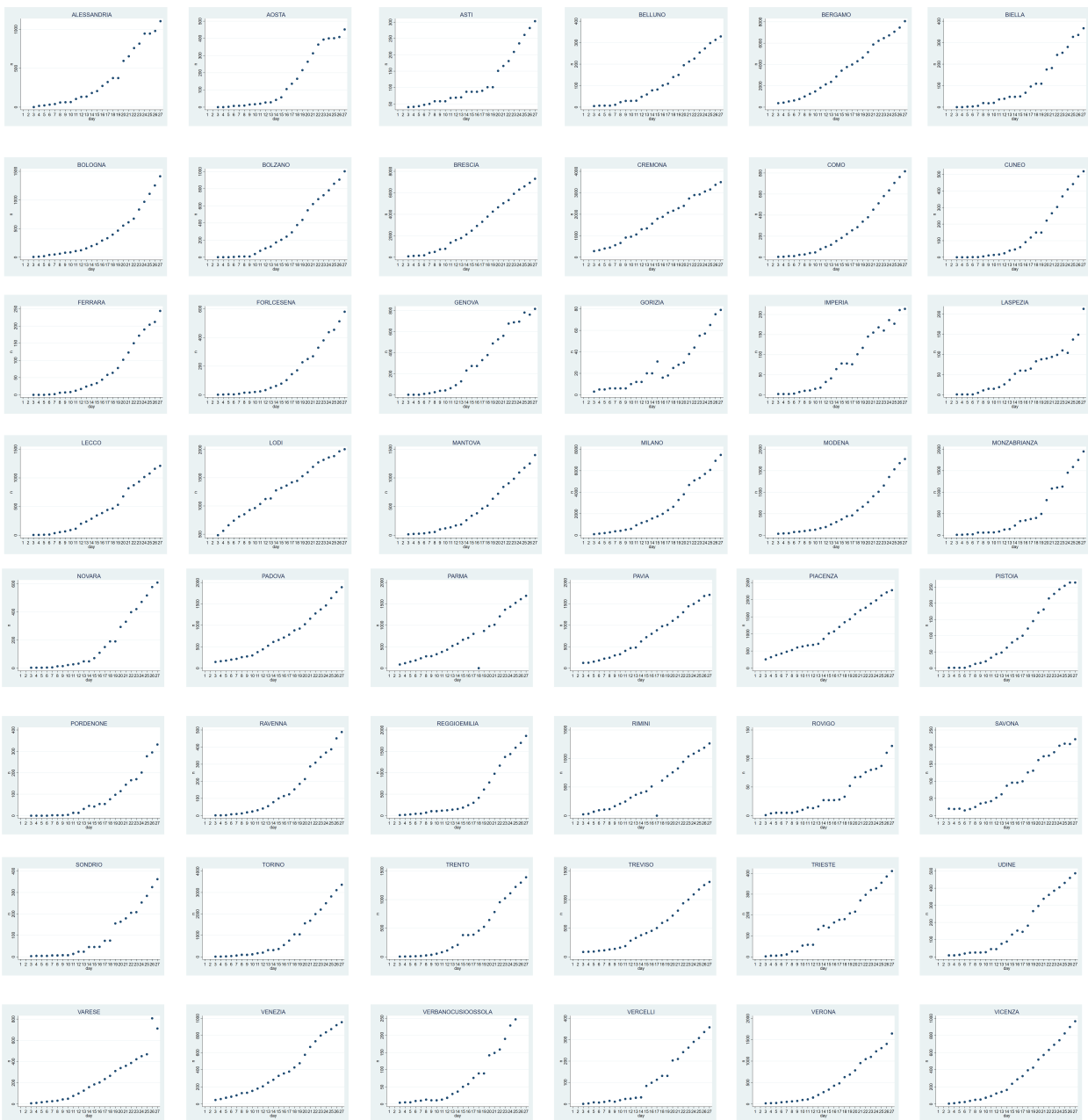
Accumulation of genomic mutations of SARS-CoV-2 over time in Belgium is shown as strings of light-green large dots. Rectangles enclose strings of mutations in each phylogenetic branch. The number of accumulated mutations in each viral isolate is indicated at the bottom. Color codes by country are shown in the upper left.

Figure S8. Genomic mutations of SARS-CoV-2 - France.



Accumulation of genomic mutations of SARS-CoV-2 over time in France is shown as strings of deep-green large dots. Rectangles enclose strings of mutations in each phylogenetic branch. The number of accumulated mutations in each viral isolate is indicated at the bottom. Color codes by country are shown in the upper left.

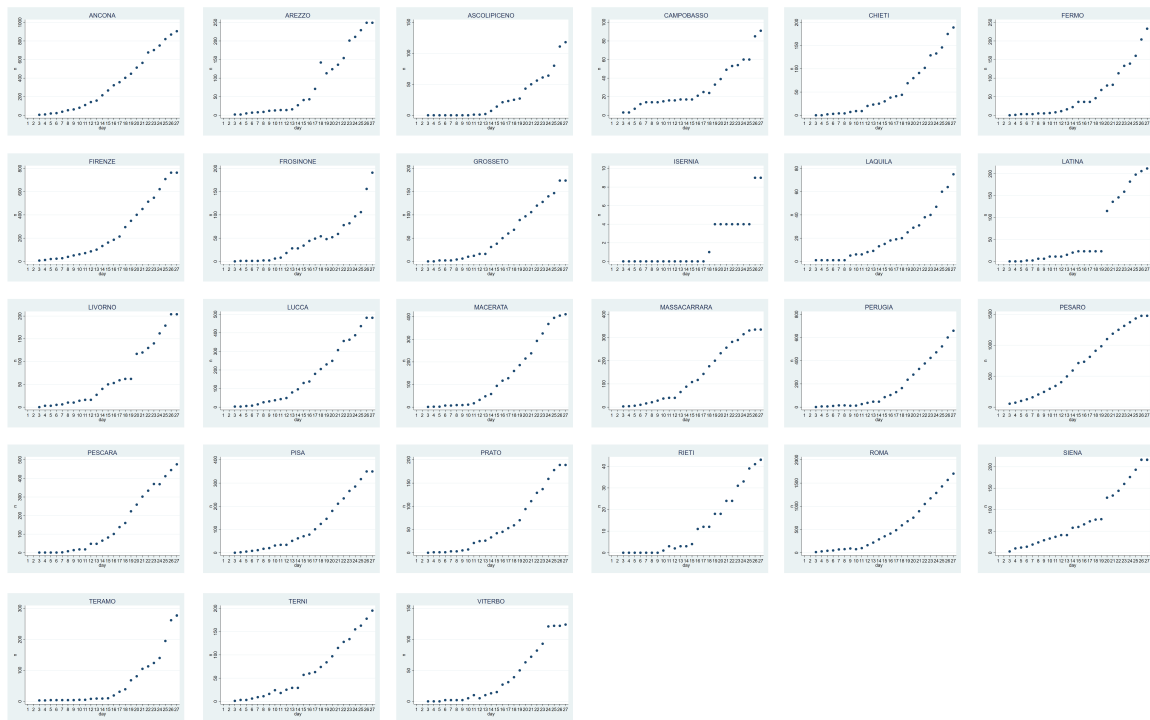
Figure S9. Progression of COVID-19 over Italy - Northern Provinces *.



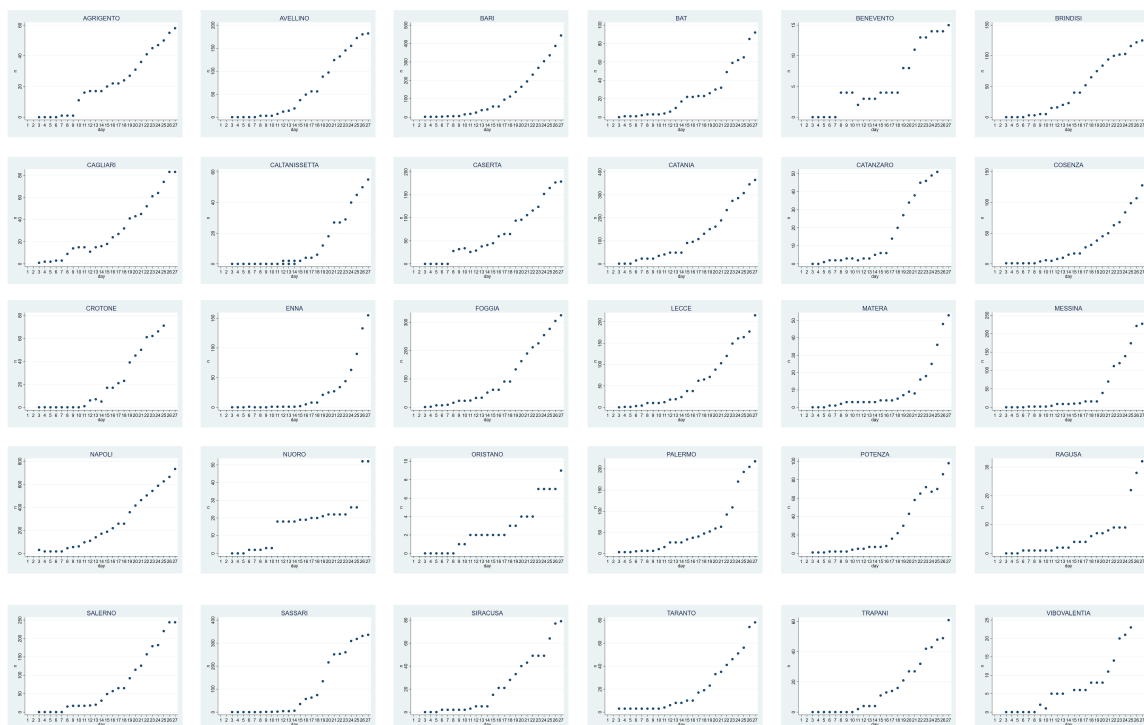
*: Graphs are in alphabetical order. Case incidence in the indicated municipalities is plotted versus time (March 3-27, 2020). For comparison purposes, all graphs were normalized versus the highest number of cases per Province. COVID-19 doubling times were computed on non-normalized, absolute numbers.

Figure S10. Progression of COVID-19 over Italy - Central & Southern Provinces*.

Central

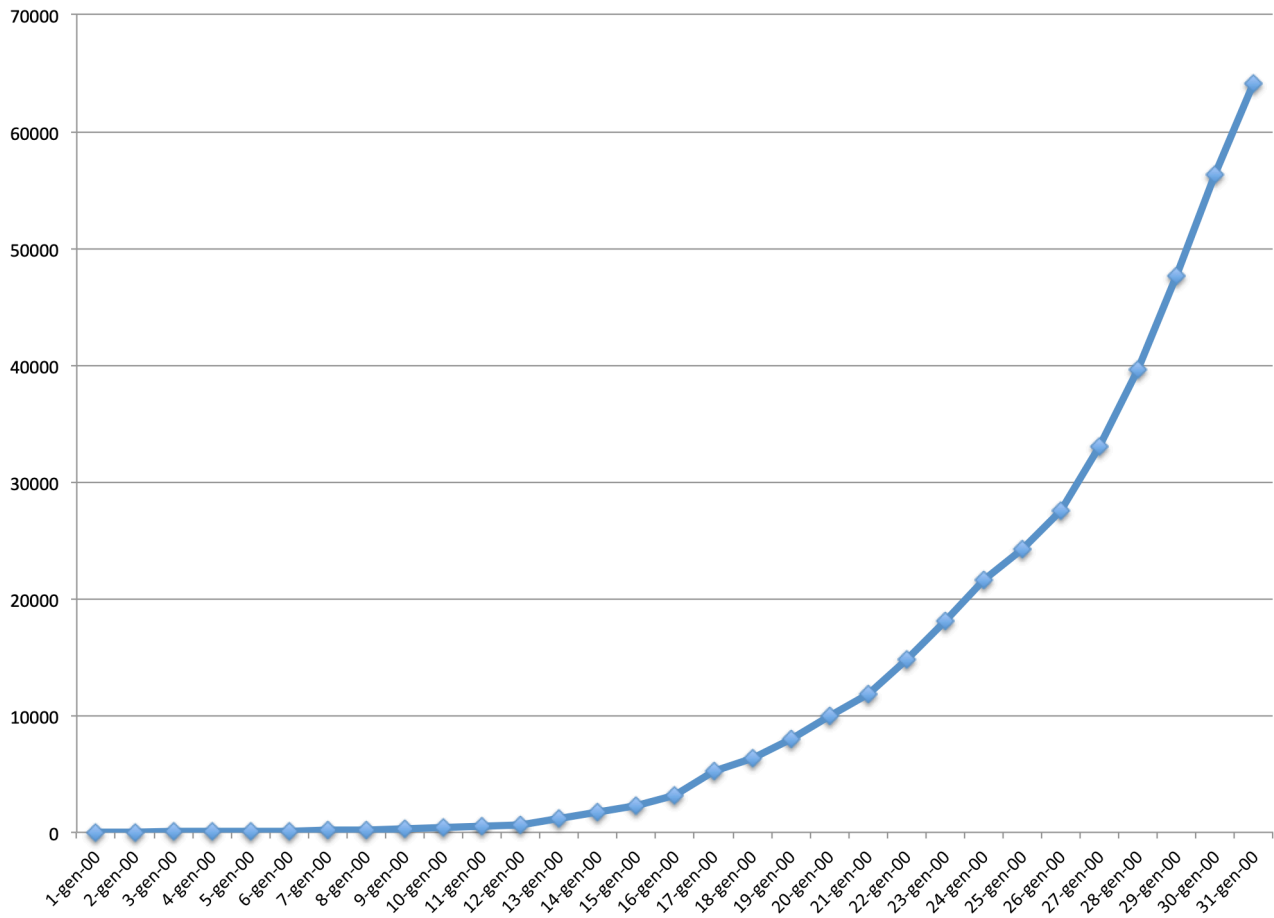


Southern



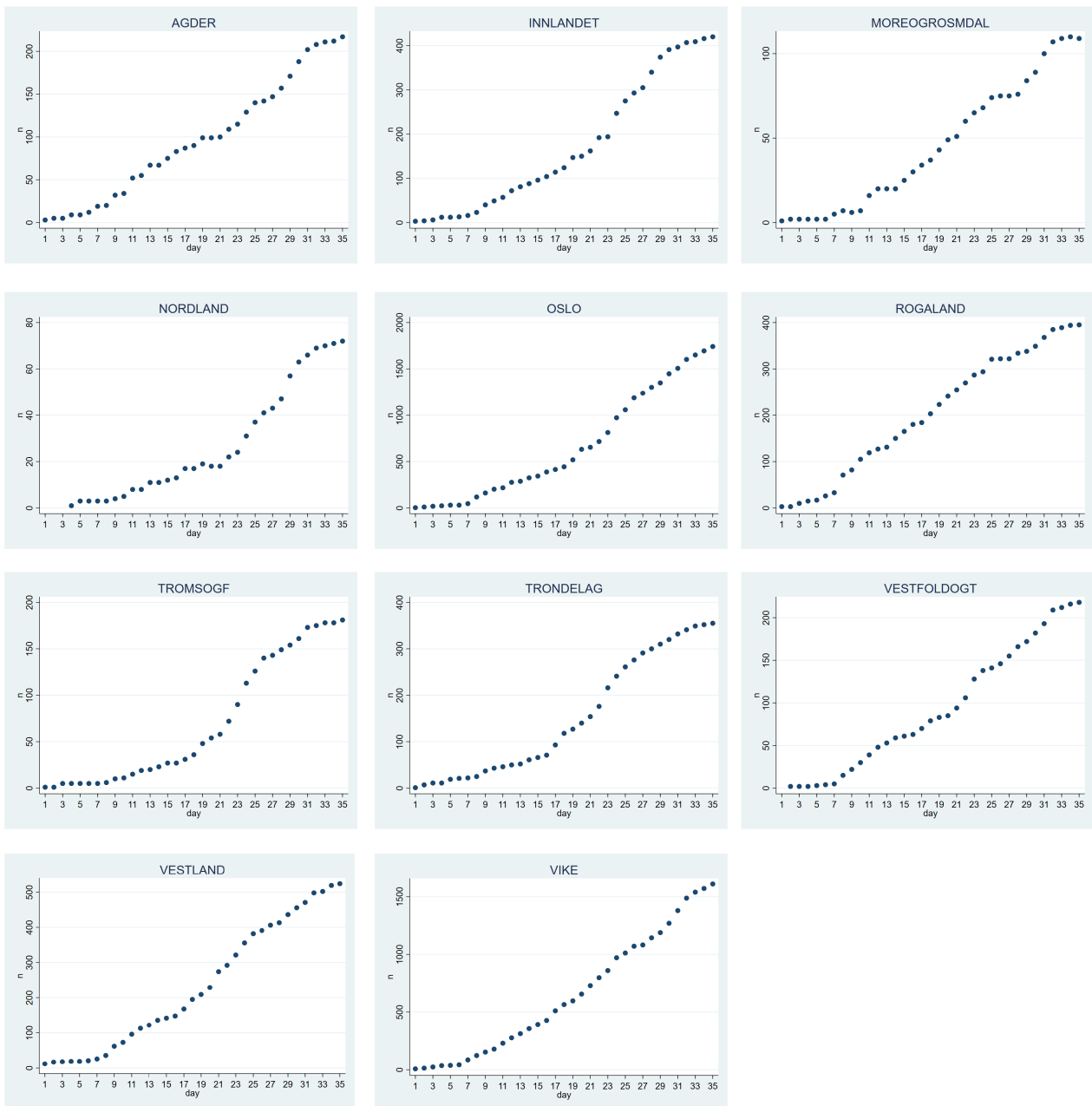
*: Graphs are in alphabetical order. Case incidence in the indicated municipalities is plotted versus time (March 3-27, 2020). For comparison purposes, all graphs were normalized versus the highest number of cases per Province. COVID-19 doubling times were computed on non-normalized, absolute numbers.

Figure S11. Progression of COVID-19 over Spain*.



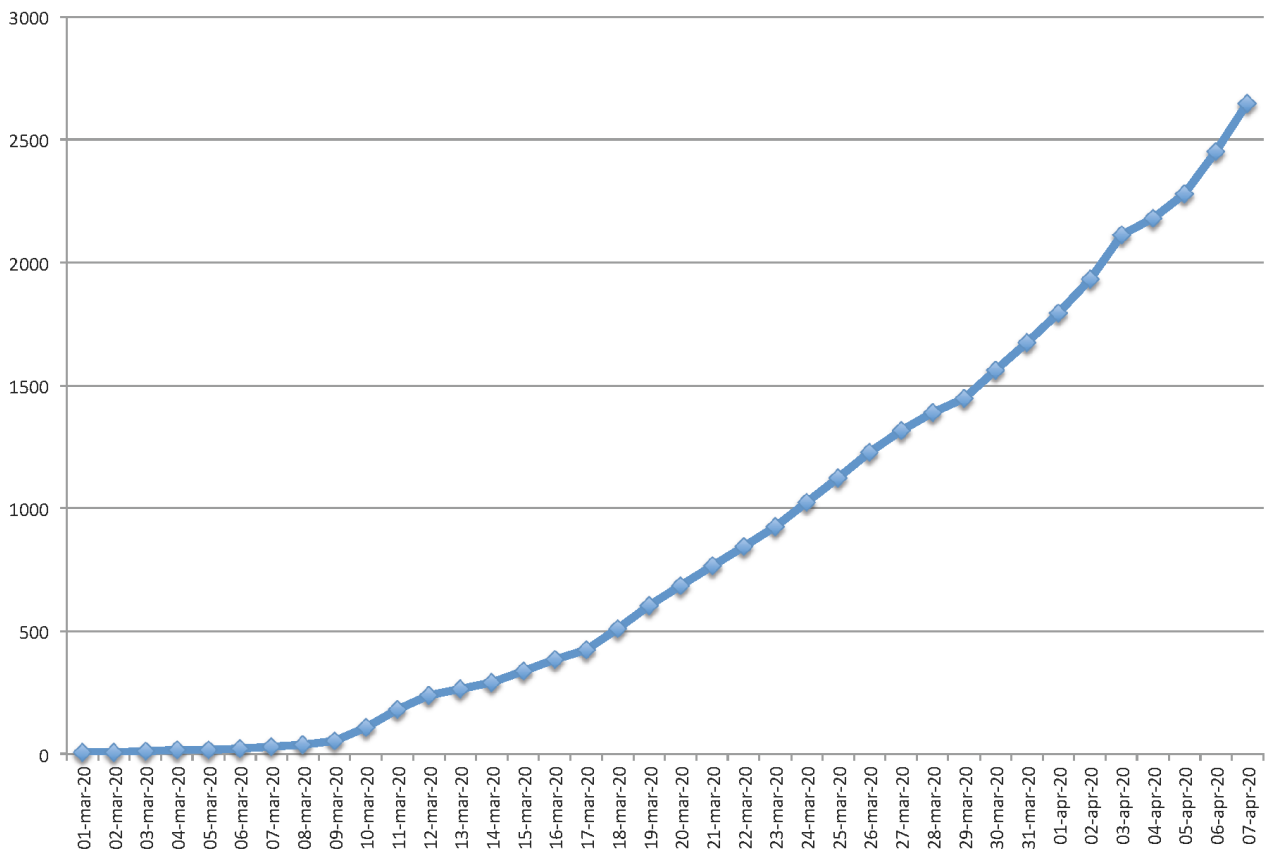
*: case incidence in the country is plotted versus time (March 1-31, 2020).

Figure S12. Progression of COVID-19 over Norway*.



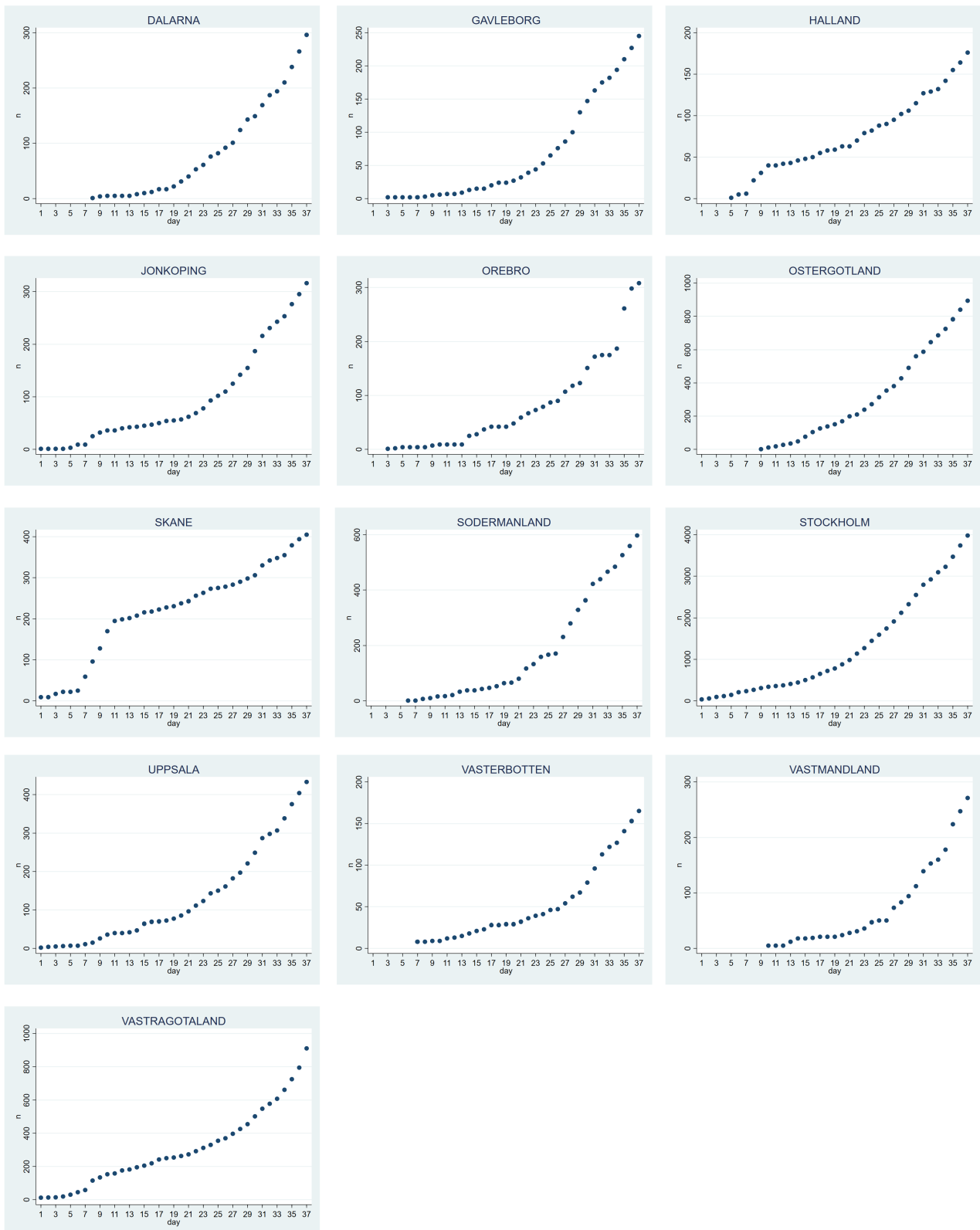
*: case incidence in the indicated municipalities is plotted versus time (March 1-April 7, 2020).

Figure S13. Progression of COVID-19 over Finland*.



*: case incidence in the indicated municipalities is plotted versus time (March 1-April 7, 2020).

Figure S14. Progression of COVID-19 over Sweden*.



*: case incidence in the indicated municipalities is plotted versus time (March 1-23, 2020).

Supplemental online Table 1A. COVID-19 spreading in Central and South America.

	Argentina	Brazil	Chile	Colombia	Costa Rica	Dominican Republic	Ecuador	Mexico	Panama	Peru	Uruguay	Venezuela	Trinidad and Tobago
March 1*			2					1		2			
March 2			2				1	1	5				
March 3			2	1			1	6	5				
March 4	1		2	1			1	7	5				
March 5	1		3	1		1	1	7	5				
March 6	1	7	1		1	1	1	16	5				
March 7	2	13	5	1	1	1	1	14	5		1		
March 8	9	19	5	1	5	1	1	14	7		6		
March 9	12	25	10	1	9	1	1	15	7		6		
March 10	12	25	13	3	9	5	5	15	7	1	9		
March 11	17	34	17	3	13	5	5	15	7	8	11		
March 12	19	52	23	9	13	5	5	17	11	10	17		
March 13	31	77	33	9	22	5	5	17	12	14	22		
March 14	34	98	43	16	23	5	5	23	26	27	28		2
March 15	45	121	61	24	23	5	5	23	41	27	43		2
March 16	56	200	75	24	23	5	5	37	53	43	71	4	2
March 17	65	234	156	45	41	21	21	58	53	69	86	6	33
March 18	65	234	156	45	41	21	21	58	82	69	86	6	33
March 19	79	291	238	93	50	21	21	155	93	86	145	29	36
March 20	97	428	342	108	87	34	34	199	118	109	234	79	36
March 21	128	621	434	145	113	72	72	367	164	137	234	94	36
March 22	158	904	434	196	113	72	72	506	164	137	318	94	36
March 23	225	904	632	196	117	72	72	532	251	245	318	135	70

*: cases were recorded from March 1-23, 2020.

Supplemental online Table 1B: COVID-19 in Middle-East, Africa, and Gulf countries.

	Iran	Pakistan	Saudi Arabia	Qatar	Bahrain	Egypt	Lebanon	Iraq	Kuwait	UAE	Morocco	Jordan	Tunisia	Oman	Afghanistan	South Africa	Algeria	Burkina Faso	Senegal	DRC	Cameroon	
March 1*	4	593	4	1	40	1	2	13	45	19					6	1						
March 2	978	4	4	3	47	2	10	19	56	21					6	1						
March 3	1501	5	1	7	49	2	13	26	56	21	1	1	1	1	6	1		5				
March 4	2336	5	1	8	49	2	13	31	56	27	1	1	1	1	12	1		5				
March 5	2922	5	2	8	49	2	13	36	58	27	2	1	1	1	15	1		12				
March 6	3513	5	8	8	49	3	16	36	58	27	2	1	1	1	16	1		12		4		1
March 7	4747	5	8	11	49	3	22	44	58	45	2	1	1	1	16	1	1	17		4		2
March 8	5823	5	7	12	56	48	28	54	62	45	2	1	1	1	16	4	2	17		4		2
March 9	6566	6	15	15	79	55	32	60	64	45	2	1	1	1	2	16	4	3	20		4	2
March 10	7161	16	15	18	109	59	41	61	65	59	2	1	1	1	2	18	4	7	20		4	2
March 11	8042	16	20	24	110	59	41	61	69	74	3	1	1	1	6	18	4	7	20	2	4	1
March 12	9000	19	21	262	189	67	66	70	80	74	5	1	1	1	6	18	7	13	25	2	4	1
March 13	10075	20	21	262	195	67	66	70	80	85	6	1	1	1	7	18	7	17	25	2	10	1
March 14	11364	21	62	262	210	93	77	93	100	85	7	1	1	1	16	19	7	17	26	2	10	2
March 15	12729	28	103	337	211	93	93	93	112	85	18	1	1	1	16	20	10	38	37	3	21	2
March 16	14991	52	103	401	221	126	99	124	112	98	28	6	18	22	16	51	49	3	26	2	2	3
March 17	14991	187	133	439	229	166	109	124	130	98	38	35	24	21	21	62	60	15	27	3	3	5
March 18	16169	187	171	442	237	166	120	154	130	98	38	35	24	24	22	62	60	20	27	3	3	5
March 19	17361	241	238	442	258	196	133	164	142	113	49	52	29	33	22	116	72	28	36	7	10	
March 20	18407	302	238	452	269	210	149	177	148	140	61	56	39	39	22	150	82	40	38	14	15	
March 21	19644	461	274	460	285	256	163	193	159	140	74	69	54	48	24	205	94	40	38	14	22	
March 22	20610	495	392	470	306	285	206	214	176	153	86	84	60	52	24	240	94	72	56	23	27	
March 23	21638	748	511	494	337	327	248	233	189	153	115	112	75	55	40	274	201	75	67	30	40	

*: cases were recorded from March 1-23, 2020. UAE: United Arab Emirates. DRC: Democratic Republic of the Congo.

Supplemental online Table 1B: COVID-19 in Middle-East, Africa, and Gulf countries.

	Iran	Pakistan	Saudi Arabia	Qatar	Bahrain	Egypt	Lebanon	Iraq	Kuwait	UAE	Morocco	Jordan	Tunisia	Oman	Afghanistan	South Africa	Algeria	Burkina Faso	Senegal	DRC	Cameroon	
March 1*	4	593	4	1	40	1	2	13	45	19					6	1						
March 2	978	4	4	3	47	2	10	19	56	21					6	1						
March 3	1501	5	1	7	49	2	13	26	56	21	1	1	1	1	6	1		5				
March 4	2336	5	1	8	49	2	13	31	56	27	1	1	1	1	12	1		5				
March 5	2922	5	2	8	49	2	13	36	58	27	2	1	1	1	15	1		12				
March 6	3513	5	8	8	49	3	16	36	58	27	2	1	1	1	16	1		12		4		1
March 7	4747	5	8	11	49	3	22	44	58	45	2	1	1	1	16	1	1	17		4		2
March 8	5823	5	7	12	56	48	28	54	62	45	2	1	1	1	16	4	2	17		4		2
March 9	6566	6	15	15	79	55	32	60	64	45	2	1	1	1	2	16	4	3	20		4	2
March 10	7161	16	15	18	109	59	41	61	65	59	2	1	1	1	2	18	4	7	20		4	2
March 11	8042	16	20	24	110	59	41	61	69	74	3	1	1	1	6	18	4	7	20	2	4	1
March 12	9000	19	21	262	189	67	66	70	80	74	5	1	1	1	6	18	7	13	25	2	4	1
March 13	10075	20	21	262	195	67	66	70	80	85	6	1	1	1	7	18	7	17	25	2	10	1
March 14	11364	21	62	262	210	93	77	93	100	85	7	1	1	1	16	19	7	17	26	2	10	2
March 15	12729	28	103	337	211	93	93	93	112	85	18	1	1	1	16	20	10	38	37	3	21	2
March 16	14991	52	103	401	221	126	99	124	112	98	28	6	18	22	16	51	49	3	26	2	2	3
March 17	14991	187	133	439	229	166	109	124	130	98	38	35	24	21	21	62	60	15	27	3	3	5
March 18	16169	187	171	442	237	166	120	154	130	98	38	35	24	24	22	62	60	20	27	3	3	5
March 19	17361	241	238	442	258	196	133	164	142	113	49	52	29	33	22	116	72	28	36	7	10	
March 20	18407	302	238	452	269	210	149	177	148	140	61	56	39	39	22	150	82	40	38	14	15	
March 21	19644	461	274	460	285	256	163	193	159	140	74	69	54	48	24	205	94	40	38	14	22	
March 22	20610	495	392	470	306	285	206	214	176	153	86	84	60	52	24	240	94	72	56	23	27	
March 23	21638	748	511	494	337	327	248	233	189	153	115	112	75	55	40	274	201	75	67	30	40	

*: cases were recorded from March 1-23, 2020. UAE: United Arab Emirates. DRC: Democratic Republic of the Congo.

Table S2. COVID-19 doubling time by Province/County.

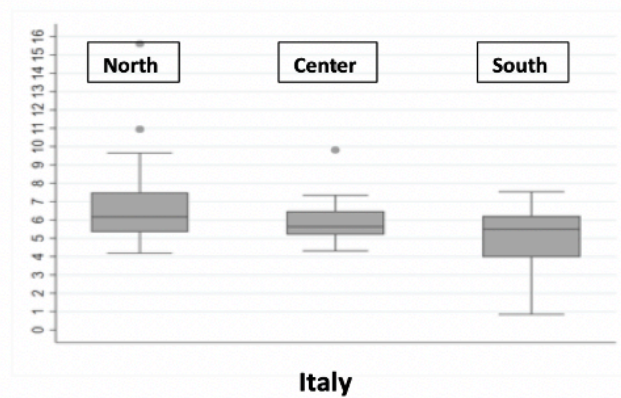
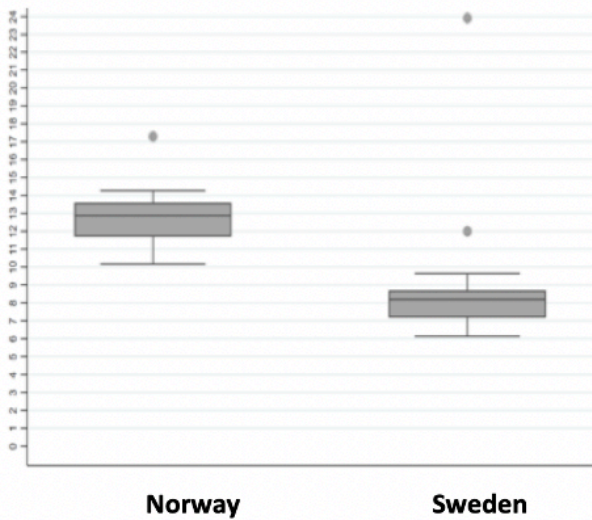
Northern Italy		Central Italy		Southern Italy	
	Doubling time		Doubling time		Doubling time
ALESSANDRIA	5,55	ANCONA	6,84	AGRIGENTO	6,67
AOSTA	6,29	AREZZO	5,86	AVELLINO	6,06
ASTI	5,41	ASCOLIPICENO	5,19	BARI	4,90
BELLUNO	6,10	CAMPOBASSO	6,33	BAT	3,97
BERGAMO	9,65	CHIETI	5,64	BENEVENTO	6,25
BIELLA	5,17	FERMO	5,00	BRINDISI	7,54
BOLOGNA	4,97	FIRENZE	5,89	CAGLIARI	6,55
BOLZANO	6,12	FROSINONE	4,86	CALTANISSETTA	4,50
BRESCIA	8,00	GROSSETO	6,74	CASERTA	6,40
COMO	5,64	ISERNIA	6,67	CATANIA	5,73
CREMONA	10,94	LAQUILA	4,50	CATANZARO	6,21
CUNEO	5,01	LATINA	5,17	COSENZA	4,10
FERRARA	5,00	LIVORNO	5,50	CROTONE	6,22
FORLICESENA	6,00	LUCCA	6,48	ENNA	1,95
GENOVA	6,88	MACERATA	5,60	FOGGIA	5,84
GORIZIA	4,69	MASSACARRARA	7,33	LECCE	5,35
IMPERIA	7,50	PERUGIA	5,42	MATERA	2,00
LASPEZIA	7,81	PESARO	9,81	MESSINA	3,60
LECCO	5,95	PESCARA	6,27	NAPOLI	6,45
LODI	15,60	PISA	5,63	NUORO	14,33
MANTOVA	6,39	PISTOIA	6,78	ORISTANO	5,50
MILANO	6,38	PRATO	5,21	PALERMO	2,74
MODENA	5,00	RIETI	4,75	POTENZA	5,62
MONZABRIANZA	5,07	ROMA	5,53	RAGUSA	0,85
NOVARA	5,33	SIENA	5,63	SALERNO	5,22
PADOVA	7,63	TERAMO	4,31	SASSARI	5,70
PARMA	6,12	TERNI	6,25	SIRACUSA	6,20
PAVIA	9,15	VITERBO	5,15	TARANTO	5,50
PIACENZA	9,20			TRAPANI	5,50
PORDENONE	4,18			VIBOVALENTIA	3,83
RAVENNA	5,70				
REGGIOEMILIA	4,90				
RIMINI	7,07				
ROVIGO	6,45				
SAVONA	7,81				
SONDRIO	6,16				
TORINO	5,29				
TRENTO	5,26				
TREVISO	7,03				
TRIESTE	7,83				
UDINE	6,59				
VARESE	8,00				
VENEZIA	6,78				
VERBANOCUSIOOSSOLA	5,35				
VERCELLI	5,68				
VERONA	6,57				
VICENZA	6,39				

Supplemental online Table 3A: COVID-19 doubling time by County – Scandinavia*.

Sweden		Norway	
	Doubling time		Doubling time
DALARNA	7,17	AGDER	13,06
GAVLEBORG	8,25	INNLANDET	11,70
HALLAND	12,00	MOREOGROSMDAL	13,61
JONKOPING	7,91	NORDLAND	10,17
OREBRO	6,86	OSLO	11,64
OSTERGOTLAND	8,70	ROGALAND	17,29
SKANE	23,92	TROMSOGF	11,98
SODERMANLAND	8,62	TRONDELAG	12,96
STOCKHOLM	9,64	VESTFOLDOGT	12,86
UPPSALA	8,19	VESTLAND	14,27
VASTERBOTTEN	6,79	VIKE	12,88
VASTMANDLAND	6,13		
VASTRAGOTALAND	8,00		

*: doubling times of COVID-19 by County in Sweden and Norway. Landmark dates were the 9th of April for Sweden and the 7th of April for Norway.

Supplemental online Table 3B: COVID-19 doubling time comparison*.



Region	Coef.	Std. Err.	t	P>t	[95% Conf. Interval]	
intercept Northern Italy	6,63	0,33			5,97	7,29
Southern vs Northern Italy	-1,25	0,53	-2,35	0,02	-2,31	-0,20
Central vs Northern Italy	-0,76	0,55	-1,39	0,166	-1,84	0,32
Sweden vs Northern Italy	2,77	0,72	3,86	< 0.0001	1,35	4,19
Norway vs Northern Italy	6,32	0,77	8,25	< 0.0001	4,80	7,83

*: (top) comparison of doubling time values versus central intercept – Northern Italy. Coef.: coefficient; Std. Err.: standard error; 95% confidence intervals are shown.

(bottom) Distribution boxplots of COVID-19 doubling times. Upper horizontal line: 75th percentile; lower horizontal line: 25th percentile; horizontal bar within box: median; upper horizontal bar outside box: maximum value; lower horizontal bar outside box: minimum value. Dots: distribution outliers.