

Supplemental Information for

**Predicting outcomes of cross-sex hormone therapy in gender dysphoria
based on pre-therapy resting-state brain connectivity**

Teena D Moody^{1*}, Jamie D Feusner^{1*}, Nicco Reggente^{2,3}, Jonathan Vanhoecke¹, Mats Holmberg^{4,5}, Amirhossein Manzouri⁴, Behzad Sorouri Khorashad⁴, Ivanka Savic⁴

¹ Department of Psychiatry and Biobehavioral Sciences, David Geffen School of Medicine at UCLA, Los Angeles, CA, USA. ² Tiny Blue Dot Foundation, Santa Monica, CA USA, ³ Institute for Advanced Consciousness Studies, Santa Monica, CA, USA ⁴ Karolinska Institutet, Stockholm, Sweden ⁵ ANOVA, Karolinska University Hospital, Stockholm, Sweden.

Corresponding author: tmood@ucla.edu, Teena D Moody

* Equal first authors

This PDF file includes:

Figure S1 Network nodes figures.

Figure S2. Change in body index scores from pre- to post-therapy.

Figure S3. Body index scores vs therapy duration.

Supporting information - Body Congruence Metrics and TCS scores.

Supporting Information - Hormone Therapy and Gender Identity,

Table S1. Associations for short duration trials with therapy duration covariate, using LASSO.

Table S2. Associations for short duration trials, using ridge regression.

Table S3. Specificity analysis: Short duration trials using LASSO with non a priori networks.

Table S4. Correlations between input features.

Table S5. Associations for long duration trials, using LASSO.

Table S6. Associations for short duration trials, without therapy duration, using LASSO.

References for Supporting Information.

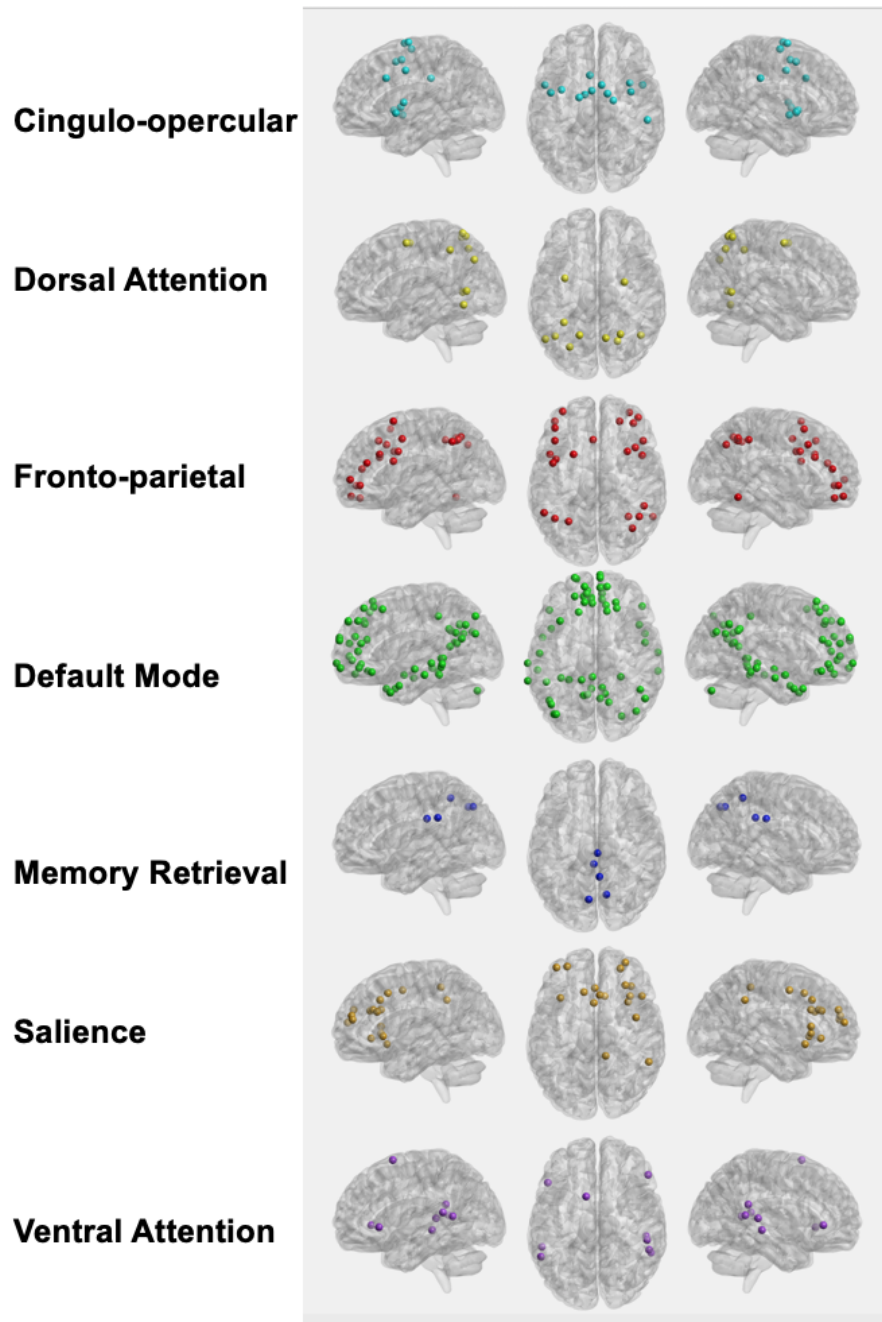


Figure S1. Network node locations for seven apriori networks (Power et al., 2011). Visualization with the BrainNet Viewer (Xia et al., 2013, <http://www.nitrc.org/projects/bnv/>, (Xia et al., 2013).

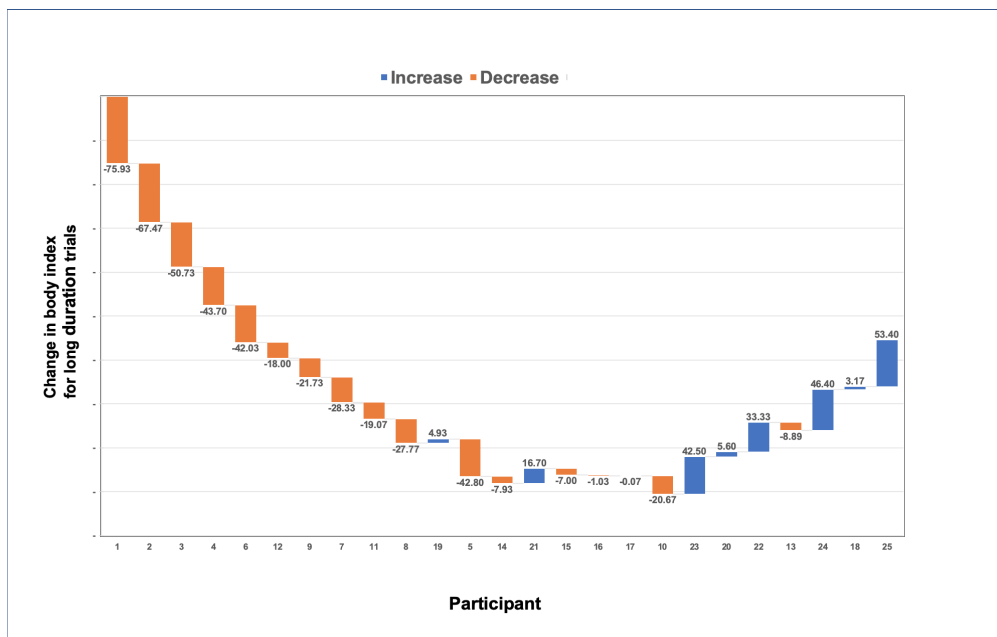
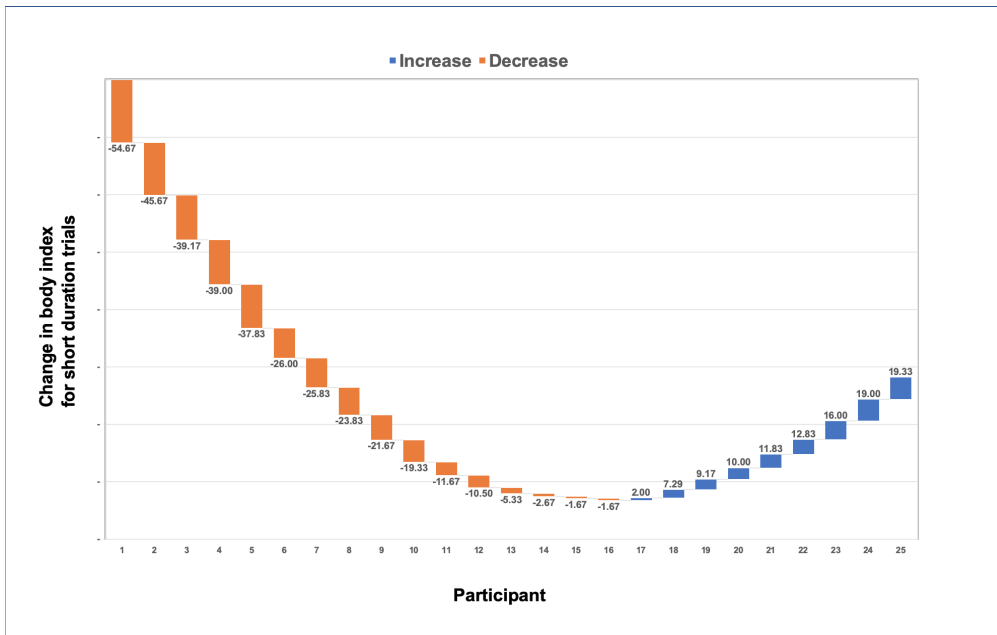


Figure S2. Change in body index scores from pre-therapy to post-therapy depicted in waterfall charts. More-negative values indicate better body congruence. Orange bars are for decreases from pre- to post-therapy, corresponding to an increase in body congruence. Blue bars are for increases from pre- to post-therapy, corresponding to a decrease in body congruence. Top: for short duration trials (0.5 sec) and Bottom: for long duration trials (2.0 sec). Participants are ordered from greatest increases in body congruence to the least, for short duration trials. The same participant order from 1 to 25 for the short duration trials is applied to the order for long duration trials.

**Association between treatment duration and
body index after hormone therapy
for short duration trials**

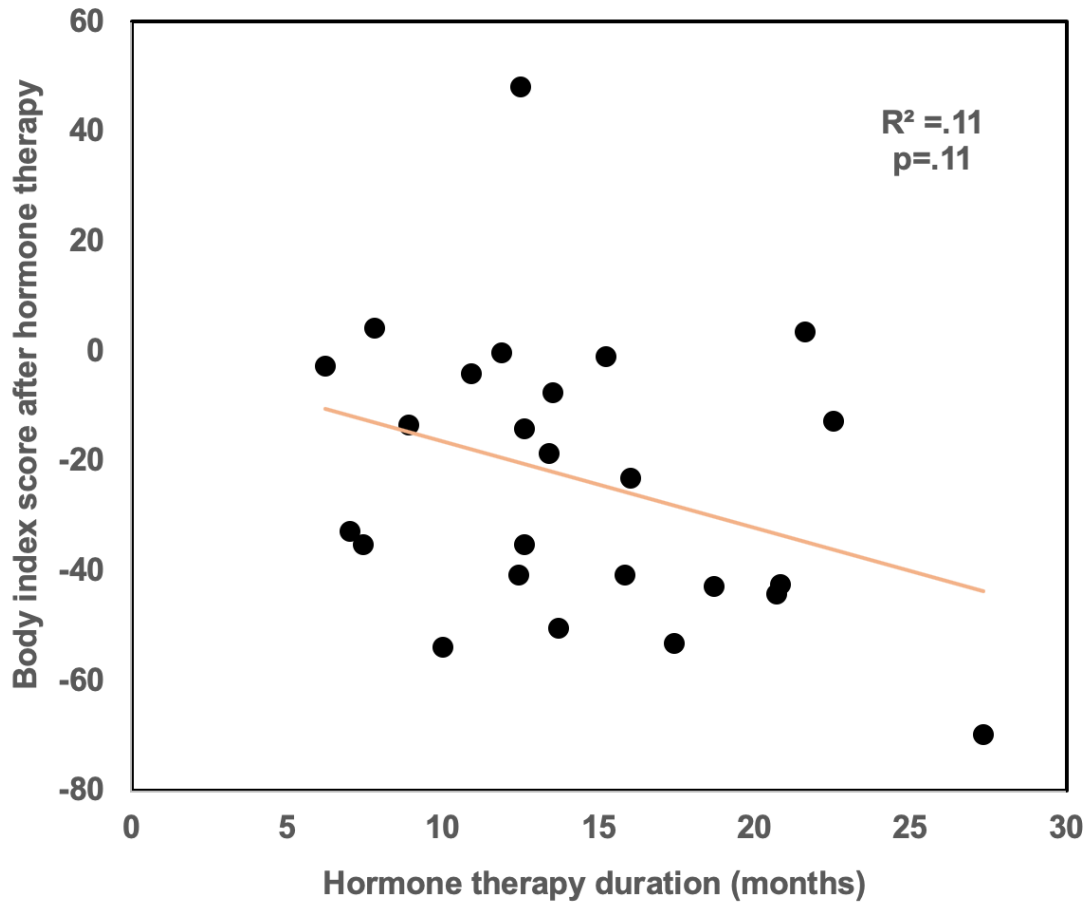


Figure S3. Body index scores vs therapy duration. Body index post-therapy showed a trend for an association with therapy duration, $r(23) = 0.33$, $p = 0.11$, for short duration trials.

Supporting information - Body Congruence Metrics and TCS scores

Correlation of TCS scores and BI scores

To investigate the relationship between TCS and our metrics for body congruence, we conducted a correlation analysis of TCS scores, Body Index scores using a data set currently being acquired at Karolinska Institutet (KI) and a second dataset being acquired at the University of California at Los Angeles (UCLA).

For KI participants, (N=30), there was a trend for an association between Body Index scores for short and long duration trials with TCS scores: short duration $R^2 = 0.07$, $p = 0.16$, long duration trials, $R^2 = 0.07$, $p = 0.17$.

For UCLA participants, (N=25), there were trends for an association between Body Index scores for short and long duration trials with TCS scores: short duration trials $R^2 = 0.14$, $p = .14$, long duration trials $R^2 = 0.13$, $p = 0.15$.

Supporting Information - Hormone Therapy and Gender Identity

Participants who identified as male or female (binary identities) were included. Homosexuality or heterosexuality was asked to be answered on the Kinsey scale with respect to the sex assigned at birth. (At the time of initiation of the study, it was uncommon to consider a variety of genders or self-identification of sexuality.)

Participants were scanned twice using magnetic resonance imaging (MRI): Trans men were scanned before starting testosterone therapy (Session 1) and again at least 6 months after the institution of testosterone (average inter-scan interval 13.6 (SD, 5.7) months; range, 6.2–27.3 months). Trans women were scanned before starting feminizing therapy (Session 1) again at least 6 months after the institution of anti-androgen and estrogen (average interscan interval, 15.5 (SD, 4.8) months; range, 7.4–21.6 months). No participants had received gender affirming surgery at the time of scanning sessions 1 and 2.

The hormonal therapy in the transgender men consisted of either testosterone undecanoate or testosterone gel. Testosterone undecanoate was given to 12/15 (80%) of the trans men and administered in standard dosing: 4 ml/1000mg every 12th week with the first two injections 6 weeks apart. Testosterone gel was given to 3/15 (20%) in standard dosing 60 mg daily. One participant's therapy choice was missing due to referral to another hospital.

The hormonal therapy in the transgender women consisted of androgen blockers in the form of cyproterone acetate or GNRH analogue together with estradiol in the form of patches, gel or tablets. Cyproterone acetate 50 mg was given to 5/9 (56%) and GNRH analogue to 4/9 (44%). Estradiol was given as patches in 5/9 (56%), gel in 3/9 (33%) and as tablets in 1/9 (11%) of the participants.

Table S1. Associations for short duration trials with therapy duration as a covariate, using LASSO. Associations between predicted and actual post-therapy body index ratings for seven functional connectivity networks subjected to multivariate analysis, including clinical features for short duration trials. The clinical features were BI pre-therapy for short duration, BMI, Kinsey. Age and therapy duration were covariates of non-interest. *Clinical values alone were not significant*, $R^2 = 0.143$, $p = 0.061$.

Networks	R² LASSO Functional connectivity and clinical features	p value, uncorrected
Fronto-parietal	0.014	0.573
Cingulo-opercular	0.002	0.851
Memory Retrieval	0.027	0.437
Saliency	0.050	0.281
Dorsal Attention	0.001	0.886
Ventral Attention	0.012	0.601
Default Mode	0.046	0.302

No values were significant for $p_{bf} < 0.006$ Bonferroni-adjusted significance level.

Table S2. Associations for short duration trials, using ridge regression. Associations between predicted and actual post-therapy Body Index Ratings for seven brain functional connectivity networks subjected to multivariate analysis, including clinical features for short duration trials using Ridge. The clinical features were body index pre-therapy for long duration trials, therapy duration, BMI, Kinsey. Age was a covariate of non-interest. *Clinical features alone were not significant*, R^2 ridge = 0.253, p-value = 0.010, uncorrected.

Networks	R² RIDGE functional connectivity and clinical features	p value, uncorrected
Cingulo Opercular	0.407*	0.001
Fronto Parietal	0.323*	0.003
Memory Retrieval	0.196	0.027
Saliency	0.197	0.026
Dorsal Attention	0.106	0.113
Ventral Attention	0.065	0.219
Default Mode	0.027	0.432
All 7 networks	0.089	0.147
<i>Exploratory</i>		
Cingulo Opercular & Fronto Parietal	0.320*	0.003

* significant for $p_{bf} < 0.006$ Bonferroni-adjusted significance level.

Table S3. Specificity analysis: Short duration trials using LASSO with non a priori networks. To establish that results were specific to those networks found to be predictive from our set of prior networks, we did a post hoc analysis of the predictive power of other Power (Power et al., 2011) networks. The associations between predicted and actual post-therapy body index ratings for six functional connectivity networks (that were not included in a priori networks) subjected to multivariate analysis, including clinical features for short duration trials. *There were no significant results.* The clinical features were pre-therapy body index for short-duration trials, therapy duration, BMI, Kinsey scores. Age was a covariate of non-interest.

Networks	R² LASSO Functional connectivity and clinical features	p-value, uncorrected
Auditory	0.220	0.018
Visual	0.035	0.370
Subcortical	0.136	0.070
Cerebellar	0.216	0.019
Sensory Somatomotor Hand	0.0004	0.921
Sensory Somatomotor Mouth	0.195	0.027

No values were significant for $p_{bf} < 0.006$ Bonferroni-adjusted significance level.

Table S4. Correlations between input features. Pearson's correlations shown for input features and covariates for all significant ($p < 0.05$) correlations and for all trends ($p < 0.20$). S1= session 1, before hormone therapy, S2 = Session 2, after hormone therapy.

variable 1	variable 2	r	R ²	P value
age	S2 body index long duration trials	0.46	0.22*	0.02
age	S1 body index short duration trials	0.38	0.15	0.06
age	S2 body index long duration trials	0.30	0.09	0.14
age	S1 Kinsey scores	0.37	0.14	0.07
BMI	S1 body index short duration trials	0.28	0.08	0.17
BMI	S1 body index long duration trials	0.32	0.10	0.11
therapy duration	S2 body index short duration trials	0.33	0.11	0.11
therapy duration	S1 Kinsey scores	0.37	0.14	0.07
S1 body index short duration trials	S2 body index short duration trials	0.64	0.41*	0.006
S1 body index long duration trials	S2 body index long duration trials	0.63	0.39*	0.008
S1 body index short duration trials	S1 body index long duration trials	0.86	0.74*	<.001
S2 body index long duration trials	S2 body index long duration trials	0.92	0.84*	<.001

* Significant, $p < 0.05$. Pearson's Correlations, r, R² and p values.

Table S5. Associations for long duration trials, using LASSO. Associations between predicted and actual post-therapy body index ratings for seven brain functional connectivity networks subjected to multivariate analysis, including clinical features for *long duration trials*. *There were no significant results.* Body index before therapy for long duration trials, therapy duration, BMI, and Kinsey scores were clinical features, and age was a covariate of non-interest. *Clinical features alone were not significant, $R^2 = 0.176$.*

Networks	R² LASSO Functional connectivity and clinical features
Cingulo Opercular	0.226
Fronto Parietal	0.175
Default Mode	0.170
Memory Retrieval	0.116
Dorsal Attention	0.082
Ventral Attention	0.060
Saliency	0.009
All 7 networks	0.172
<i>Exploratory</i>	
Cingulo Opercular & Fronto Parietal	0.258

No values were significant for $p_{bf} < 0.006$ Bonferroni-adjusted significance level.

Table S6. Associations for short duration trials, without therapy duration, using LASSO.

Associations between predicted and actual post-therapy body index Ratings for seven brain functional connectivity networks subjected to multivariate analysis, including clinical features for short duration trials. The clinical features were body index pre-therapy for short duration trials, and BMI, Kinsey. Age was a covariate of non-interest. Therapy duration was not included in the analysis. *Clinical features alone were or were not significant*, $R^2 = 0.242$, $p = 0.012$.

Networks	R² Functional connectivity and clinical features	p value, uncorrected
Cingulo Opercular	0.398*	0.0007
Fronto Parietal	0.300*	0.0046
Memory Retrieval	0.194	0.027
Saliency	0.186	0.031
Dorsal Attention	0.104	0.115
Ventral Attention	0.086	0.155
Default Mode	0.020	0.501
All 7 networks	0.075	0.186
<i>Exploratory</i>		
Cingulo Opercular & Fronto Parietal	0.306*	0.004

* significant for $p_{bf} < 0.006$ Bonferroni-adjusted significance level.

References for Supplementary Materials

- Power JD, Cohen AL, Nelson SM, Wig GS, Barnes KA, Church JA, Vogel AC, Laumann TO, Miezin FM, Schlaggar BL, Petersen SE. 2011. Functional network organization of the human brain. *Neuron* **72**:665–678.
- Xia M, Wang J, He Y. 2013. BrainNet Viewer: a network visualization tool for human brain connectomics. *PLoS One* **8**:e68910.