

APPENDIX I: Modeling Methods

Reconciling model predictions with low reported cases of COVID-19 in Sub-Saharan Africa: Insights from Madagascar. 2020. Michelle V. Evans¹, Andres Garchitorena^{2,3}, Rado J.L. Rakotonanahary³, John M. Drake¹, Benjamin Andriamihaja^{3,4}, Elinambinina Rajaonarifara^{2,3,5}, Calistus N. Ngonghala⁶, Benjamin Roche^{2,7,8}, Matthew H. Bonds^{3,9}, Julio Rakotonirina¹⁰

We adapted an age-structured, stochastic, SEIR model (Roche et al. 2020) for the population of Madagascar. The population is divided into eight age classes i , within which they fall into the classic SEIR epidemiological compartments (Fig. S1). Individuals begin in the susceptible state (S), and are infected according to a force of infection that incorporates the transmission rate (β), contact rate between age classes (θ_{ij}), and the number of infectious individuals in each age class (I_j and A_j). Following an incubation period ($1/\varepsilon$), exposed individuals can then either become infected and asymptomatic with probability p or infected and symptomatic with probability $1-p$. Asymptomatic individuals then recover with a recovery rate (σ). We assume that asymptomatic individuals cannot become severe or die, but they do contribute to transmission equal to symptomatic individuals. Symptomatic-infected individuals recover at the same rate as asymptomatic individuals (σ) after which they enter a severe state (S) with probability π_i , die with probability α_i , or die from the virus (D_i) with probability $1-\pi_i-\alpha_i$. Probabilities of case severity and mortality are age-dependent following Flaxman et al. 2020. There are no transitions between age classes and the primary purpose of the age classes is to account for age-structured contact rates and age-dependent severity and mortality rates. The model incorporates the age structure of Madagascar (Fig. S2A) (UNICEF 2018) and the contact matrix of Mozambique (Fig. S2B) (Prem et al. 2017), as no published contact matrix exists for Madagascar.

We calculate R_0 following Roche et al. (2020):

$$R_0 = \frac{\sum_i (\beta S_i \sum_j \theta_{ij})}{\varepsilon + \sigma} \quad \text{Equation 1}$$

The transmission rate (β) is set so that R_0 is 2.5, approximating values seen in Europe and the US (Kissler et al. 2020).

Simulations begin on March 20, 2020, with ten symptomatic infected individuals allocated to across age classes according to the age distribution of Madagascar's population. The number of initial asymptomatic individuals in each age class is equal to the number of symptomatic cases divided by the proportion of symptomatic cases ($1-p$), resulting in 50 asymptomatic individuals allocated across age classes.

Each scenario was simulated 100 times for 365 days, with a timestep τ of 0.5 days. The unmitigated scenario used baseline parameters as described in Table 1, reporting the daily incidence of infected-symptomatic (I) and infected-asymptomatic (A) across all age classes as the total number of cases. Scenarios that explored lower detection rates scaled this number of

total cases by the appropriate detection rate, applying an equal detection rate to symptomatic and asymptomatic cases and across all ages. Scenarios that explored reduced transmission via non-pharmaceutical interventions reduced the the contact rates (θ_{ij}) by multiplying this value by $(1 - \text{NPI efficiency})$. These reductions were applied equally across all age classes. Because the lockdown in Madagascar was announced on March 23, 2020, we began the contact reduction on day 4 of the simulations, corresponding to March 24, 2020. Our model assumes that these contact reductions remain constant for the duration of the epidemic (365 days).

Figures

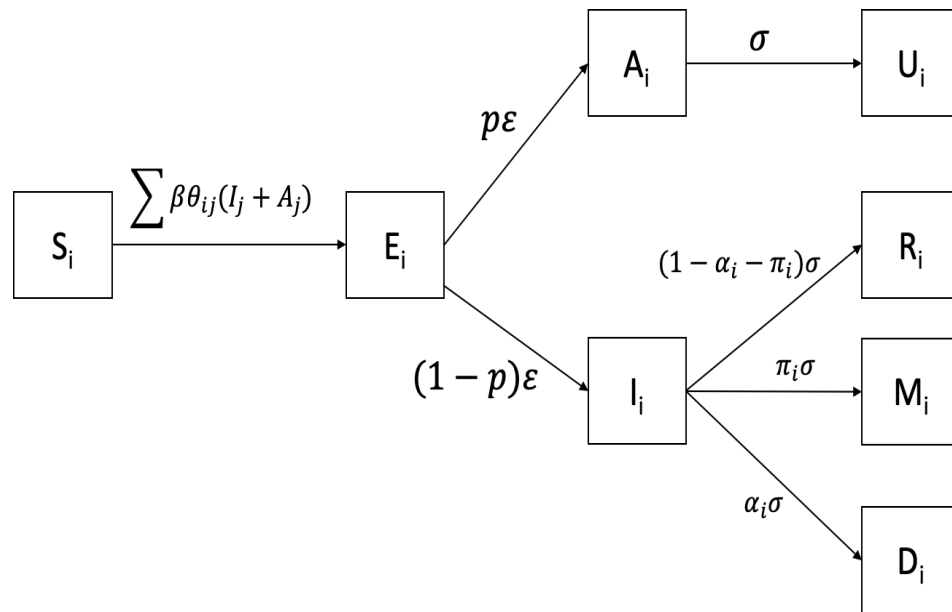


Figure S1. Diagram of compartmental SEIR model. Parameters are described in Table S1.

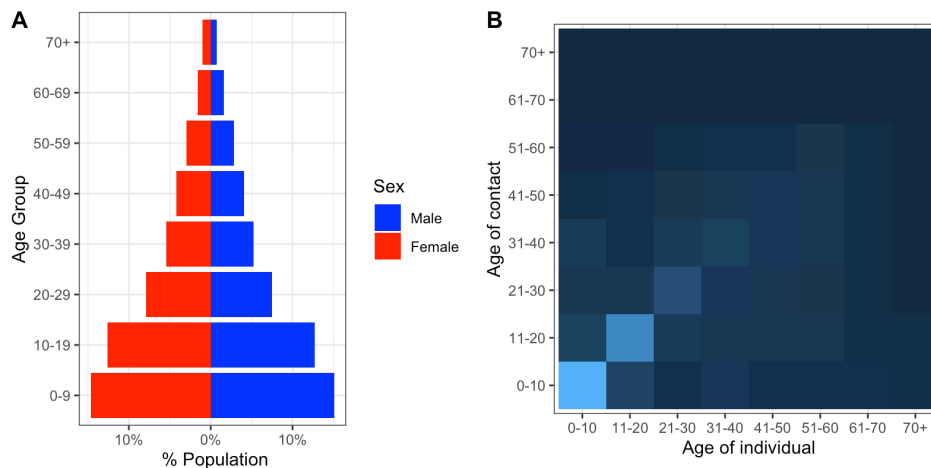


Figure S2. Age structure (A) and contact matrix (B) used in the model. Lighter colors in B represent higher contact rates.

Table S1. Model parameters.

	Description	Value	Source
β	Transmission rate	1.21×10^{-9}	Scaled so $R_0 = 2.5$
θ_{ij}	Contact frequency between age group j to i	Age-dependent	Prem et al. 2017
ρ	Proportion mild or asymptomatic	.8	Roche et al. 2020
ε	1/incubation period	1/3	Roche et al. 2020
σ	1/infectious period	1/5	Roche et al. 2020
α_i	Fatality rate of symptomatic infections	Age-dependent	Flaxman et al. 2020
π_i	Severity rate of symptomatic infections	Age-dependent	Flaxman et al. 2020

References

- Flaxman, S., S. Mishra, A. Gandy, H. J. T. Unwin, T. A. Mellan, H. Coupland, C. Whittaker, H. Zhu, T. Berah, J. W. Eaton, M. Monod, A. C. Ghani, C. A. Donnelly, S. M. Riley, M. A. C. Vollmer, N. M. Ferguson, L. C. Okell, and S. Bhatt. 2020. Estimating the effects of non-pharmaceutical interventions on COVID-19 in Europe. *Nature*.
- Kissler, S. M., C. Tedijanto, E. Goldstein, Y. H. Grad, and M. Lipsitch. 2020. Projecting the transmission dynamics of SARS-CoV-2 through the postpandemic period. *Science* 368:860–868.
- Prem, K., A. R. Cook, and M. Jit. 2017. Projecting social contact matrices in 152 countries using contact surveys and demographic data. *PLOS Computational Biology* 13:e1005697.
- Roche, B., A. Garchitorena, and D. Roiz. 2020. Optimal strategies for quarantine stopping in France. General expected patterns of strategies focusing on contact between age groups. medRxiv:2020.04.21.20073932.
- UNICEF. Madagascar Multiple Indicator Cluster Survey version 6. 2018. <https://mics.unicef.org/>