

Online supplementary file

Changes in the adult consequences of adolescent mental health: findings from the 1958 and 1970 British birth cohorts

Ellen Jo Thompson, PhD¹, Marcus Richards, PhD² George B. Ploubidis, PhD¹ Peter Fonagy, PhD³ and Praveetha Patalay, PhD^{1,2}

Contents

eTable 1. Measurement invariance in the Rutter questionnaire at age 16 years between the cohorts

eTable 2. Multi-group item-factor loadings (two factor model) in each cohort

eTable 3. Multi-group item-factor loadings (bi-factor model) in each cohort

eTable 4. Count and percentage of complete case and missing exposures and outcomes.

eTable 5. Correlations between each outcome at age 16 and exposures at age 42 years

eFigure 1. Predicted probabilities (from the two-factor model) for externalising (1) and internalising symptoms (2) at age 16 (x-axis) association with each outcome at age 42 in the two cohorts

eFigure 2. Predicted probabilities (from the bi-factor model) for externalising (3) and internalising symptoms (4) at age 16 (x-axis) association with each outcome at age 42 in the two cohorts.

eFigure 3. Predicted probabilities (from the bi-factor model) in males and females for general psychopathology at age 16 (x-axis) association with high psychological distress

eFigure 4. Predicted probabilities (from the two-factor model) in males and females for externalising symptoms and internalising symptoms at age 16 (x-axis) association with professional employment.

eTable 1. Measurement invariance analysis for the Rutter scales at age 16 across cohorts

	Configural invariance model	Metric invariance model	Scalar invariance model
RMSEA	.069	.067	.065
SRMR	.083	.084	.084
CFI	.865	.862	.864

Note. For the RMSEA and SRMR, a score closest to zero indicates good model fit, whereas for CFI it is closest to one. Rules of thumb for model comparison applied are from Chen (2007) as follows: for RMSEA invariance is met if a change between models is smaller than 0.015, for SRMR if it is smaller than 0.03 and for CFI if it is smaller than 0.01¹

¹ Chen FF. Sensitivity of goodness of fit indexes to lack of measurement invariance. *Struct Equ Model.* 2007;14(3):464-504. doi:10.1080/10705510701301834

eTable 2. Standardised factor loadings (two factor model) for 1958 NCDS and 1970 BCS cohort (multigroup model)

Items	1958 NCDS		1970 BCS	
	Factor Loadings (SE)		Factor Loadings (SE)	
	EXT	INT	EXT	INT
restless, difficulty staying seated	0.73 (.01)	-	0.63 (.01)	-
squirmy, fidgety child	0.78 (.01)	-	0.65 (.01)	-
often destroys others property	0.71 (.02)	-	0.73 (.02)	-
frequently fights, quarrelsome	0.68 (.01)	-	0.74 (.01)	-
not much liked by other children	0.56 (.02)	-	0.63 (.02)	-
irritable, flies off the handle	0.65 (.01)	-	0.73 (.01)	-
twitches, mannerisms, tics-face or body	0.41 (.02)	-	0.45 (.03)	-
is often disobedient	0.70 (.01)	-	0.81 (.001)	-
cannot settle more than a few moments	0.69 (.01)	-	0.71 (.01)	-
often tells lies	0.69 (.01)	-	0.76 (.01)	-
bullies other children	0.65 (.01)	-	0.76 (.01)	-
often worries about things	-	0.62 (.01)	-	0.69 (.01)
does things on own, rather solitary	-	0.32 (.01)	-	0.50 (.01)
appears miserable, unhappy & tearful	-	0.86 (.01)	-	0.86 (.01)
fearful of new situations or things	-	0.54 (.01)	-	0.59 (.01)
fussy, over particular	-	0.35 (.01)	-	0.47 (.01)

Note. Model fit was assessed using the comparative fit index (CFI), Tucker Lewis index (TLI) and root mean square error of approximation (RMSEA). CFI and TLI closer to 1 indicate good fit to the data and RMSEA closer to 0 indicates good fit. Owing to the non-nested nature of the models, models could not be compared directly using a difference in fit statistic (e.g. Akaike information criterion) as they cannot be estimated when WLSMV estimation is used. Hence, model fit criteria and factor loadings were used to assess the quality of models. Externalising factor (EXT); Internalising factor (INT). Model fit indices for the two-factor CFA: 1958 NCDS ($n = 11654$): RMSEA = 0.07; CFI = 0.86; TLI = 0.84; 1970 BCS ($n = 8904$): RMSEA = 0.06; CFI = 0.91; TLI = 0.89

eTable 3. Standardised factor loadings (two factor model) for 1958 NCDS and 1970 BCS cohort (multigroup model)

Items	1958 NCDS (1958)			1970 BCS (1970)		
	Factor Loadings (SE)			Factor Loadings (SE)		
	EXT	INT	GEN	EXT	INT	GEN
restless, difficulty staying seated	0.67 (.02)	-	0.61 (.02)	0.71 (.02)	-	0.53 (.02)
squirmy, fidgety child	0.62 (.02)	-	0.63 (.02)	0.64 (.02)	-	0.60 (.02)
often destroys others property	0.04 (.03)	-	0.73 (.02)	0.03 (.02)	-	0.74 (.01)
frequently fights, quarrelsome	0.28 (.03)	-	0.71 (.01)	0.23 (.02)	-	0.67 (.011)
not much liked by other children	0.08 (.03)	-	0.57 (.02)	0.09 (.02)	-	0.60 (.01)
irritable, flies off the handle	0.09 (.02)	-	0.69 (.01)	0.05 (.02)	-	0.67 (.01)
twitches, mannerisms, tics-face or body	0.18 (.03)	-	0.39 (.02)	0.22 (.03)	-	0.40 (.02)
is often disobedient	0.17 (.03)	-	0.73 (.01)	0.15 (.02)	-	0.75 (.01)
cannot settle more than a few moments	0.33 (.03)	-	0.65 (.02)	0.33 (.02)	-	0.67 (.01)
often tells lies	0.16 (.03)	-	0.71 (.01)	0.14 (.02)	-	0.71 (.01)
bullies other children	0.32 (.03)	-	0.67 (.02)	0.30 (.02)	-	0.68 (.01)
often worries about things	-	0.71 (.02)	0.30 (.01)	-	0.74 (.02)	0.32 (.01)
does things on own, rather solitary	-	0.32 (.01)	0.16 (.01)	-	0.27 (.01)	0.27 (.01)
appears miserable, unhappy & tearful	-	0.39 (.02)	0.57 (.02)	-	0.34 (.01)	0.58 (.01)
fearful of new situations or things	-	0.60 (.02)	0.23 (.01)	-	0.56 (.02)	0.30 (.01)
fussy, over particular	-	0.32 (.01)	0.19 (.01)	-	0.27 (.01)	0.23 (.01)

Note. The model fit indices for the bi-factor CFA: 1958 NCDS ($n = 11654$): RMSEA = 0.04; CFI = 0.96; TLI = 0.94 (just under the accepted threshold for very good model fit (0.95)); 1970 BCS ($n = 8904$): RMSEA = 0.04 CFI = 0.94; TLI = 0.94

eTable 4. Count and percentage of available data for the exposures and outcomes in each cohort

			Cohort									
			1958 NCDS					1970 BCS70				
Domain	Measure		Age	year	N valid (%)	N missing (%)	N of total valid sample* (%)	age	year	N valid (%)	N missing (%)	N of total valid sample* (%)
Exposure at age 16	Adolescent internalising symptoms	Rutter Behavioural Scale	16	1974	11080 (61.4)	5011 (38.6)	16091 (100)	16	1986	7882 (51.6)	7376 (48.4)	15258 (100)
	Adolescent ixternalising symptoms	Rutter Behavioural Scale	16	1974	11080 (61.4)	5011 (38.6)	16091 (100)	16	1986	7885 (51.7)	7373 (48.3)	15258 (100)
Outcomes at age 42	Health and well-being	Malaise Inventory	42	2000	11277 (60.8)	4814 (39.2)	16091 (100)	42	2012	7979 (52.3)	7279 (47.7)	15258 (100)
		General Health	42	2000	11374 (70.7)	4717 (29.3)	16091 (100)	42	2012	9069 (56.6)	7527 (43.4)	15258 (100)
		Life Satisfaction	42	2000	11268 (70)	4823 (30)	16091 (100)	42	2012	8973 (58.8)	6285 (41.2)	15258 (100)
	Socio-economic	Whether CM lives with a spouse or partner	42	2000	11380 (70.7)	4711 (29.3)	16091 (100)	42	2012	9106 (59.7)	6152 (40.3)	15258 (100)
		Voting behaviour	42	2000	11350 (70.5)	4741 (29.5)	16091 (100)	42	2012	7890 (51.7)	7368 (48.3)	15258 (100)
		Highest NVQ level up to 2000/2012	42	2000	11397 (70.8)	4694 (29.2)	16091 (100)	42	2012	9106 (59.7)	6152 (40.3)	15258 (100)
		Employment Status	42	2000	8285 (51.49)	7806 (48.51)	16091 (100)	42	2012	7854 (51.5)	7404 (48.5)	15258 (100)

eTable 5. Correlations between adolescent mental health and age 42 health and social outcomes.

Cohort	Age 16 mental health exposure variables		Age 42 health and social outcomes correlations							
			Mental Health	Mental Health (binary variable)	General Health	Life Satisfaction	Co-habitation	Voted in the last general election	Obtained a degree	Employment type
1958	Mental Health (2-factor model)	Externalising Symptoms	.15	.13	.14	-0.10	-.07	-.08	-.14	-.12
		Internalising Symptoms	.19	.14	.12	-0.11	-.07	-.04	-.06	-.06
	Mental Health (Bi-factor model)	Externalising Symptoms	-.03	.02	.01	.01	-.01	.005	-.01	-.01
		Internalising Symptoms	.15	.09	.02	-.05	-.03	.01	.02	.02
		General psychopathology	.16	.12	.14	-.11	-.07	-.08	-.13	-.11
1970	Mental Health (2-factor model)	Externalising Symptoms	.17	.14	.18	-.13	-.11	-.11	-.16	-.13
		Internalising Symptoms	.22	.17	.16	-.13	-.10	-.06	-.09	-.07
	Mental Health (Bi-factor model)	Externalising Symptoms	-.02	-.01	-.03	.01	.01	-.04	.01	.04
		Internalising Symptoms	.16	.10	.05	-.04	-.02	.05	.04	.02
		General psychopathology	.18	.15	.19	-.14	-.11	-.02	-.16	-.13

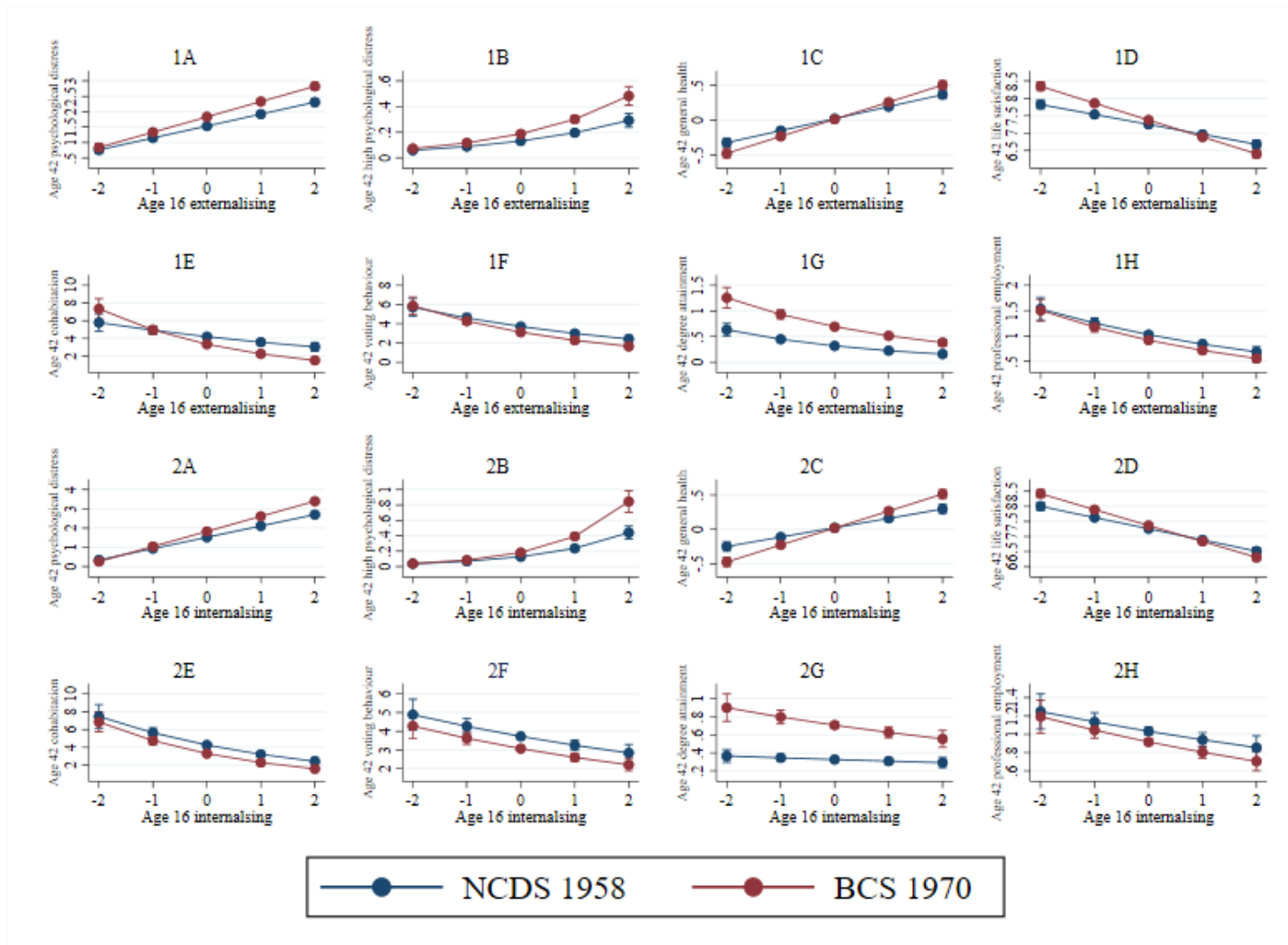
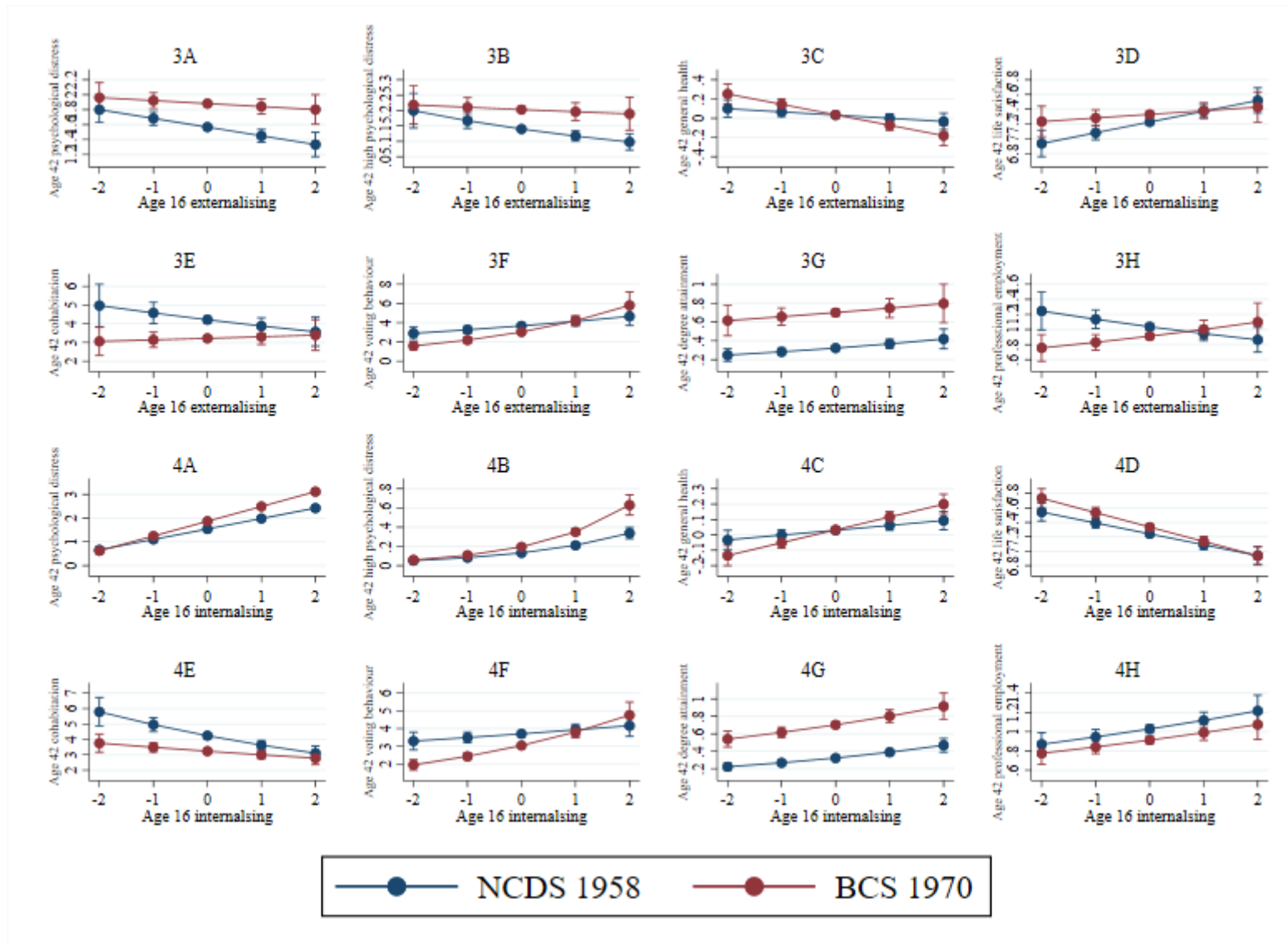
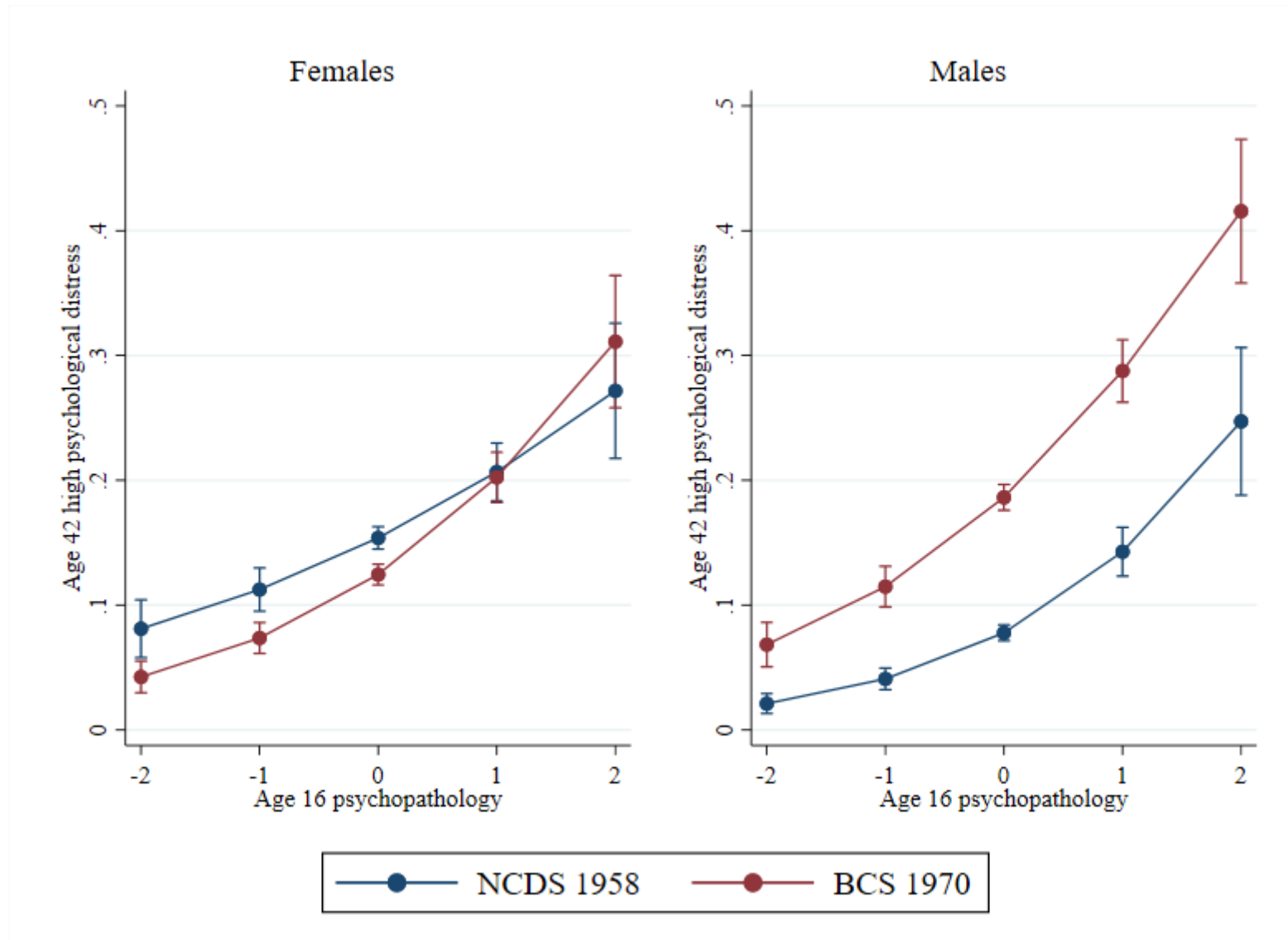


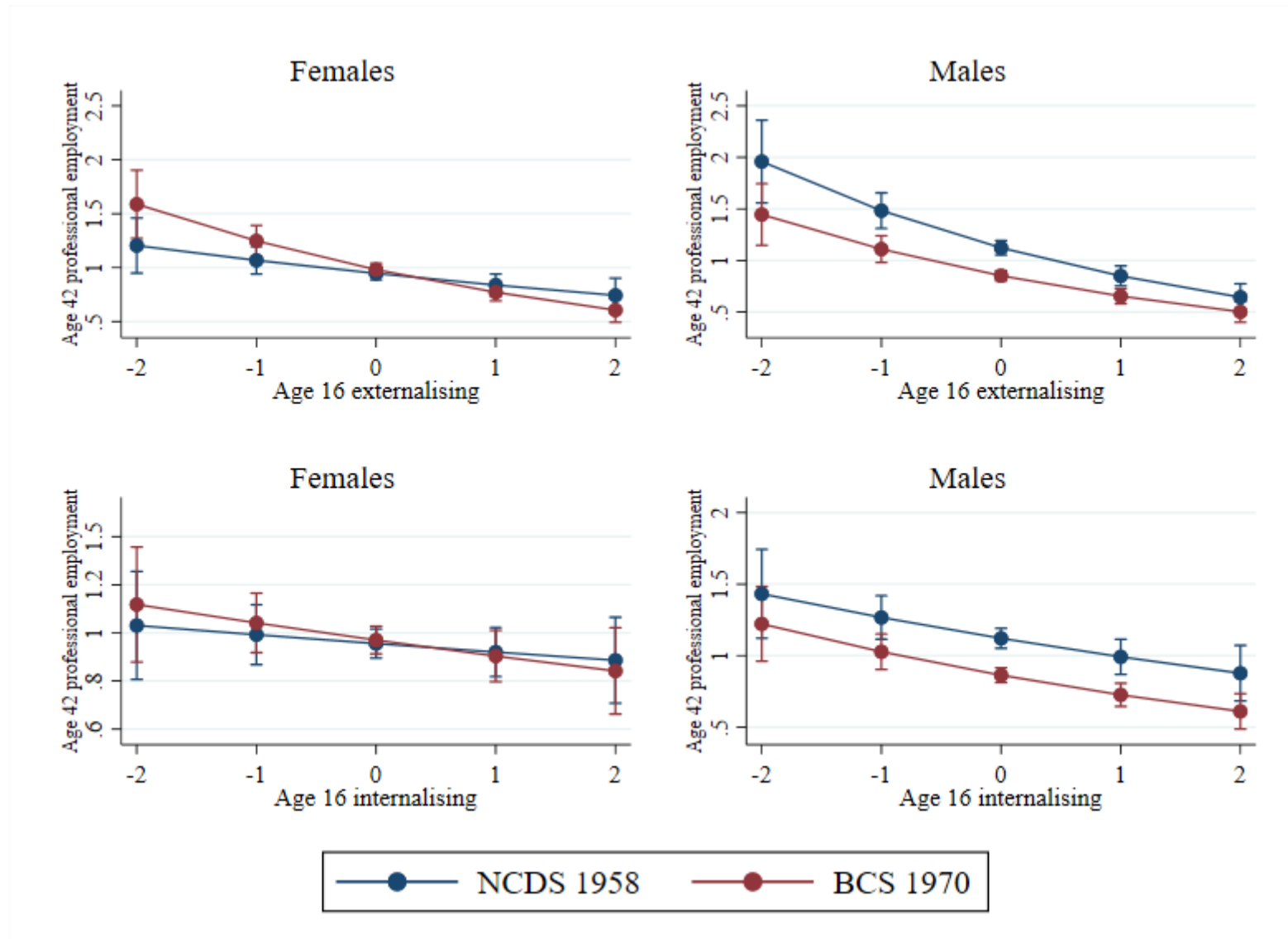
Figure 1. Predicted probabilities (from the two-factor model) for externalising (1) and internalising symptoms at age 16 (x-axis) association with each outcome at age 42 in the two cohorts.



eFigure 2. Predicted probabilities (from the bi-factor model) for externalising (1) and internalising symptoms at age 16 (x-axis) association with each outcome at age 42 in the two cohorts.



eFigure 3. Predicted probabilities (from the bi-factor model) in males and females for general psychopathology at age 16 (x-axis) association with high psychological distress



eFigure 4. Predicted probabilities (from the two-factor model) in males and females for externalising symptoms and internalising symptoms at age 16 (x-axis) association with professional employment.