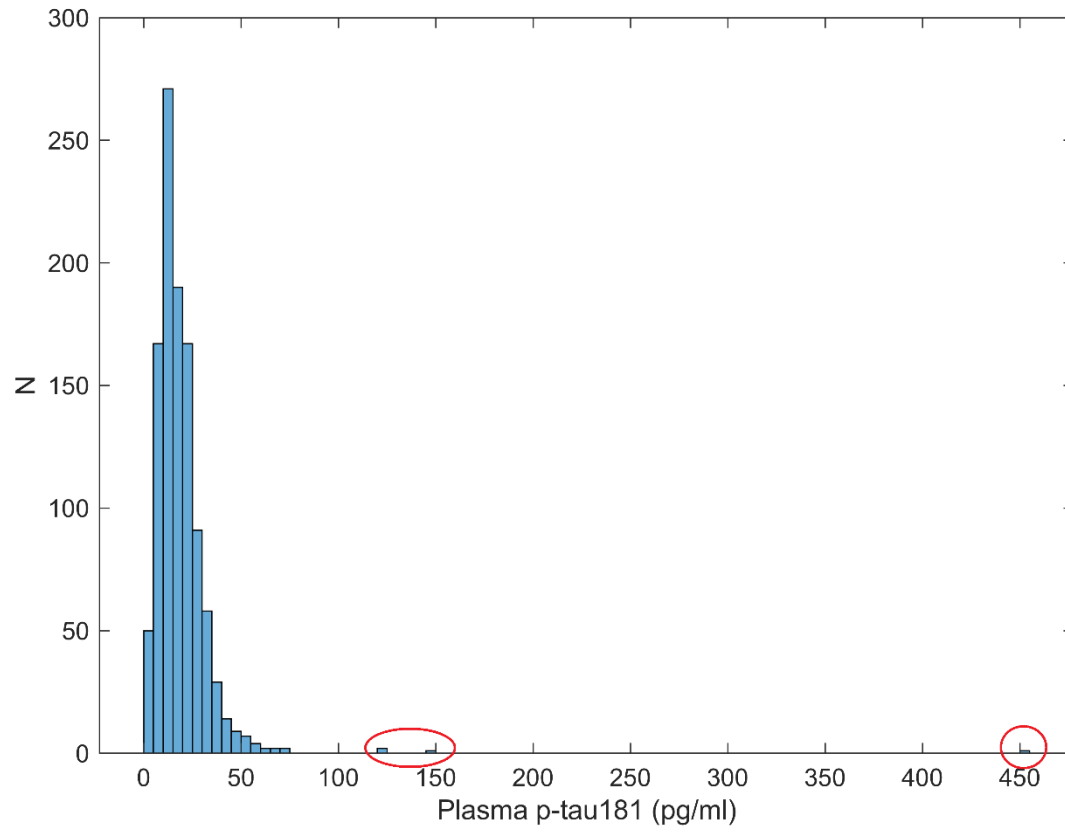
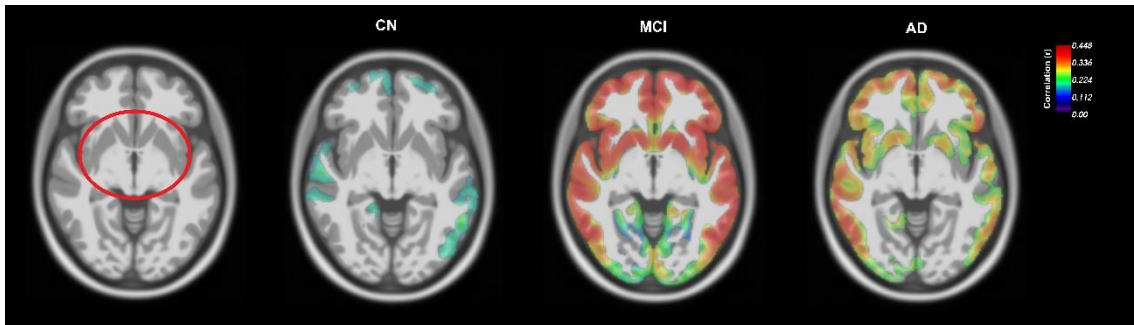


Supplementary Material

Supplementary Figure 1. Distribution of baseline plasma p-tau181 levels. Enclosed in red circles are the 4 outlier measurements (121, 124, 148, and 451 pg/ml) that were excluded from analyses.



Supplementary Figure 2. Axial slices showing association maps in the striatum between baseline plasma p-tau181 and baseline FTP SUVR for CN, MCI, and Alzheimer's disease dementia participants. Models were adjusted for age and sex.



Supplementary Figure 3. Axial slices showing association maps in the striatum between FTB SUVR change and A) baseline plasma p-tau181, B) plasma p-tau181 change. Models were adjusted for age and sex.

