

Recurrent Neural Reinforcement Learning for Counterfactual Evaluation of Public Health Interventions on the Spread of Covid-19 in the world

Qiyang Ge¹, Zixin Hu^{2,3}, Kai Zhang⁴, Shudi Li⁴, Wei Lin¹, Li Jin^{2,3} and Momiao Xiong^{4,*}

Supplementary Materials

Supplementary Note A

Supplementary Figure Legend

Figure S1. RNRL algorithm flowchart.

Figure S2. The reproduction number curves as a function of time in the top fifteen most-affected countries.

Tables S1-S8

Supplementary Note A

Recurrent Neural Reinforcement Learning for Action (Intervention) Selection and Evaluation

Architecture of Recurrent Reinforcement Learning Neural Networks

The basic structure of reinforcement learning (RL) is an agent and an environment [28]. The agent interacts with the environment by carrying out different actions under different environment (the state of the system). The RL has three components: state, action and reward. The agent gets a reward with each action. The RL attempts to generate a sequence of actions to make the best reward. The RL can be viewed as an open dynamical system with a correspondent reward function (or loss function). A typical dynamic system is a Markov Decision Process (MDP). The RL has two basic tasks: system identification and best (suitable) action selection. Therefore, the architecture of recurrent neural reinforcement learning (RNRL) consists of two RNNs. One RNN is designed for system identification to learn a model underlying the dynamics of Covid-19 from available historical data. The RNN for system identification is called an encoder (Figure 1). The second RNN is designed for action selection and evaluation to learn optimal intervention policy. The RNN for action selection and evaluation is called a decoder (Figure 2).

RNN Encoder

The RNN encoder was a mapping from a sequence space (or time series) to another sequence space (or time series space) and the current output depended on both current input and the whole observation history (whole time series). The RNN encoder extracted short-term local dependency patterns among variables and to discover long-term patterns for time series trends [S1]. The RNN encoder had three layers: input, recurrent hidden and output layers (Figure 1). The input layer consisted of three types of variables: covariates $X_t = [X_t^1, \dots, X_t^n]^T$, a scalar intervention variable $A_t \in \mathcal{A}$, where \mathcal{A} is an action space, and the numbers of cases (potential outcomes) Y_t at the time t . Similar to the reproduction number R in the epidemiological models which is often used to determine the dynamic behavior of epidemics, Intervention measure is a matrix to quantify the degree of controlling infection. Interventions were measured by number in the interval $[0, 1]$. A value of 1 for intervention measure indicates that intervention is the strongest and reproducing number R is close to zero. A value of zero for intervention variables indicates that no restrictions on social-economic activities are imposed. The values between 0 and 1 indicated the various less strict interventions. The covariates can include the rate of virus test, Google mobility indexes, social distance index, weather, age, gender, race, . Define the input vector V_t as

$$C_t = \begin{bmatrix} y_t \\ \vdots \\ y_{t-l+1} \end{bmatrix}.$$

Let $h_t = [h_t^1, \dots, h_t^m]^T \in S$ be a m dimensional hidden state vector where m is set to be 100 in this study where S is a state space. The data C_t was inputted into the input layer. The linear transformation $W_{ch}C_t$ of the data C_t was then sent to the hidden layer, where W_{ch} is a $m \times l$ dimensional matrix. The input data also included the covariates X_t and action A_t . The hidden

layer receives information from the input layer and hidden layer at the previous time point.

The state h_t at the time t was determined by the following nonlinear system transition equation:

$$h_t = f_h(W_{hh}h_{t-1} + W_{ch}C_t + W_{ah}A_t + W_{xh}X_t + b_h), \quad (\text{A1})$$

where W_{hh} was a $m \times m$ dimensional weight matrix that connected the previous state to the current state, W_{ah} was $m \times 1$ dimensional matrix that connected the action variable to the current hidden state, W_{xh} is a $m \times n$ dimensional matrix that connected the covariates to the current hidden state, and $b_h = [b_h^1, \dots, b_h^m]^T$ was a m dimensional bias vector that corrected the bias, and f_h was a element-wise nonlinear activation function and was often defined as the following ‘‘tanh’’ function:

$$\tanh(x) = \frac{e^x - e^{-x}}{e^x + e^{-x}}.$$

Let θ_h denote the weight matrices and bias vector in equation (A1). Then, equation (A1) can be rewritten as

$$h_t = f_h(h_{t-1}, C_t, A_t, X_t, \theta_h). \quad (\text{A2})$$

The MDP is partially observed through output (observation) equation. The neurons in hidden layer were connected to the output layer via a m dimensional weight vector W_{hy} . The output \hat{Y}_{t+1} was determined by

$$\hat{y}_{t+1} = f_y(W_{hy}h_t + b_y), \quad (\text{A3})$$

where f_y was an activation function, W_{hy} was $1 \times m$ dimensional weight matrix, and b_y was the bias of the output neuron. Let θ_y denote the weights and bias in equation (A3). Then, equation (A3) can be rewritten as

$$\hat{y}_{t+1} = f_y(h_t, \theta_y). \quad (\text{A4})$$

A deterministic policy maps a state h_t directly to an action via a feedforward neural network:

$$A_{t+1} = f_a(W_{ha}h_t + b_a), \quad (\text{A5})$$

where W_{ha} was a weight matrix, b_a was a bias, and f_a was element-wise nonlinear activate function.

Again let θ_a denote the weights and bias in equation (A5). Then, equation (A5) can be rewritten as

$$A_{t+1} = g(h_t, \theta_a). \quad (\text{A6})$$

Reward r_t at the time step t was defined as

$$r_t = R(h_t, A_t) = \|y_{t+1} - \hat{y}_{t+1}\|^2. \quad (\text{A7})$$

At each time step, the agent took action A_{t+1} at the state h_t and received reward $R(h_t, A_t)$. The agent then transited into the next state h_{t+1} . The goal of the RL was to find a policy

that minimizes the following reward

$$\min_A V(h_l) = \sum_{t=l}^{T-1} \|y_{t+1} - \hat{y}_{t+1}\|^2, \quad (\text{A8})$$

where $A = \{A_l, A_{l+1}, \dots, A_{T-1}\}$.

The popular methods for solving the RL problem was dynamic programming [S 2].

However, dynamic programming was suitable for discrete state space and action space and was not efficient for continuous state space and action space. A popular way to solve the above problem was the gradient method. All system transition, policy mapping and value functions

were approximated by neural networks and parameterized [28]. Since the action variable was parameterized, the value function in equation (A8) should be augmented. Define

$$V_y(y, x, A, \theta_h, \theta_y) = \sum_{t=l+1}^{T-1} \|y_{t+1} - \hat{y}_{t+1}\|^2, \quad (\text{A9})$$

$$V_a(y, x, A, \theta_a) = \sum_{t=l+1}^{T-1} \|\hat{A}_{t+1}^k - \hat{A}_{t+1}^{k-1}\|^2, \quad (\text{A10})$$

and

$$V(y, x, A, \theta_h, \theta_y, \theta_a) = V_y(y, x, A, \theta_h, \theta_y) + V_a(y, x, A, \theta_a), \quad (\text{A11})$$

where $\theta_h = (W_{vh}, W_{ah}, W_{xh}, b_h)$, $\theta_y = (W_{hy}, b_y)$, and $\theta_a = (W_{ha}, b_a)$.

Define

$$\tilde{V}_y^k(y, x, \tilde{A}^k, \theta_h, \theta_y) = V_y(y, x, \tilde{A}^k, \theta_h, \theta_y) + V_a.$$

Define the following optimal value functions:

$$\bar{V}_y^k(y, x, \tilde{A}^k, \tilde{\theta}_h^{k+1}, \tilde{\theta}_y^{k+1}) = \min_{\theta_h, \theta_y} \tilde{V}_y^k(y, x, \tilde{A}^k, \theta_h, \theta_y), \quad (\text{A12})$$

where

$$\begin{bmatrix} \tilde{\theta}_h^{k+1} \\ \tilde{\theta}_y^{k+1} \end{bmatrix} = \arg \min_{\theta_h, \theta_y} \tilde{V}_y^k(y, x, \tilde{A}^k, \theta_h, \theta_y), \quad (\text{A13})$$

$$\tilde{V}_a^{k+1}(y, x, \tilde{A}^{k+1}, \tilde{\theta}_h^{k+1}, \tilde{\theta}_y^{k+1}, \tilde{\theta}_a^{k+1}) = \min_{A, \theta_a} \tilde{V}_a^k(y, x, A, \tilde{\theta}_h^{k+1}, \tilde{\theta}_y^{k+1}, \theta_a), \quad (\text{A14})$$

where

$$\begin{bmatrix} \tilde{A}^{k+1} \\ \tilde{\theta}_a^{k+1} \end{bmatrix} = \arg \min_{A, \theta_a} \tilde{V}_a^k(y, x, A, \tilde{\theta}_h^{k+1}, \tilde{\theta}_y^{k+1}, \theta_a), \quad (\text{A15})$$

$$\tilde{V}_y^k(y, x, \tilde{A}^{k+1}, \tilde{\theta}_h^{k+1}, \tilde{\theta}_y^{k+1}) = \bar{V}_y^k(y, x, \tilde{A}^{k+1}, \tilde{\theta}_h^{k+1}, \tilde{\theta}_y^{k+1}), \quad (\text{A16})$$

and

$$\begin{aligned} \tilde{V}^{k+1}(y, x, \tilde{A}^{k+1}, \tilde{\theta}_h^{k+1}, \tilde{\theta}_y^{k+1}, \tilde{\theta}_a^{k+1}) &= \tilde{V}_a^{k+1}(y, x, \tilde{A}^{k+1}, \tilde{\theta}_h^{k+1}, \tilde{\theta}_y^{k+1}, \tilde{\theta}_a^{k+1}) + \\ \tilde{V}_y^k(y, x, \tilde{A}^{k+1}, \tilde{\theta}_h^{k+1}, \tilde{\theta}_y^{k+1}) &. \end{aligned} \quad (\text{A17})$$

Minimization problems in equations (A12) and (A14) are solved by the backpropagation algorithm.

Training Algorithm for RNN Encoder

Now we were ready to present training algorithm for RNN encoder.

Step 1: Initialization for action (intervention).

The initial intervention measure was calculated as follows. Set the intervention measure at the final time $A_{t_f} = 1$ for China, $A_{t_f} = 0.3$ for Korea South, Switzerland, United Kingdom, Spain, US, Italy, Germany, Iran, and France, and $A_{t_f} = 0$ for all other countries. Assume that the intervention measure curve was an exponential function starting at 0 and ends at A_{t_f} . The intervention measure A_t^0 is given by

$$A_t^0 = \frac{p^t - 1}{p - 1} * (A_{t_f} - A_0) + A_0, \text{ where } p > 0, p \neq 1 \text{ was the curve shape factor and } t \text{ took values}$$

in evenly sliced numbers of interval $[0, 1]$, A_0 was the intervention measure at the initial time t_0

. When $p = 1$, A_t^0 is a linear function $A_t^0 = t * (A_{t_f} - A_0) + A_0$. In this study, we set $p = 0.01$.

Set $k = 0$.

Step 2: Use forward dynamic programming and backpropagation to infer the best actions (interventions) for fitting the data.

While $\|\tilde{A}^{k+1} - \tilde{A}^k\|^2 > \varepsilon$

Given \tilde{A}^k , the forward dynamic programming [S6] was used to find the best action value

$$\tilde{A}^{k+1} = \{\tilde{A}_1^{k+1}, \dots, \tilde{A}_T^{k+1}\}.$$

Assume that

$$A_{t+1}^{k+1} = \rho j ,$$

where $0 \leq \rho \leq 0.01, \rho j \leq 1$.

Define

$$R^t(\bar{Y}_t, X_t, A_t^{k+1} = \rho i, A_{t+1}^{k+1} = \rho j, \theta_h^*, \theta_y^*, \theta_a^*) = \min_{\theta_h, \theta_y, \theta_a} \left(\|y_{t+1} - \hat{y}_{t+1}\|^2 + \|A_{t+1}^k - \hat{A}_{t+1}^{k+1}\|^2 \right),$$

where $\bar{Y}_t = \{y_t, \dots, y_{t-l+1}\}$ and $\hat{A}_{t+1}^{k+1} = g(h_t, \theta_a) = \rho j$.

Assume that

$$A_t^{k+1} = \rho i, A_{t+1}^{k+1} = \rho j .$$

Define

$$r^t(A_t^{k+1} = \rho i, A_{t+1}^{k+1} = \rho j) = R^t(\bar{Y}_t, X_t, A_t^{k+1} = \rho i, A_{t+1}^{k+1} = \rho j, \theta_h^*, \theta_y^*, \theta_a^*) \text{ and}$$

$$V_*(A_t^{k+1} = \rho i) = \min_{\bar{A}_t^i, \theta_h, \theta_a, \theta_y} \sum_{\tau=l}^t \left(\|y_{\tau+1} - \hat{y}_{\tau+1}\|^2 + \|A_{\tau+1}^k - \hat{A}_{\tau+1}^{k+1}\|^2 \right),$$

where $\bar{A}_t^i = \{A_1, \dots, A_{t-1}, A_t^{k+1} = \rho i, \}$.

Using forward recursive:

$$V_*(A_t^{k+1} = \rho j) = \min_{\text{all } A_{t-1}^1 = \rho i} \{r^t(A_t^{k+1} = \rho i, A_{t+1}^{k+1} = \rho j) + V_*(A_{t-1}^{k+1} = \rho i)\},$$

we obtain a sequence of actions $\tilde{A}^{k+1} = \{\tilde{A}_1^{k+1}, \dots, \tilde{A}_T^{k+1}\}$ that fit the data.

End

The standard back-propagation method and the Adam Optimizer were used for minimization in the parameter estimations. The initial learning rate in the updating parameters in the RNN encoder via backpropagation was 0.02 and learning rate decay was 0.0001.

Potential Outcome Framework for Evaluation of Actions (Public Health Interventions)

Before discussing the algorithm for training RNN decoder, we introduced the basic principles for action (intervention policy) selection and evaluation. Learning intervention policies was an extremely challenge problem. We employed the Counterfactually-Guided Policy Evaluation (CF-GPS) principle and RL to evaluate the effect of public health interventions on controlling the spread of Covid-19 [S3]. We viewed the public health intervention as treatment and the number of cases as the outcome. Counterfactual treatment outcome estimation was essentially a causal problem. Most methods for causal inference were designed for the statistic setting and cannot be applied to evaluating the effects of the sequence of public health interventions on (e.g. sequential application of intervention A followed by intervention B) the transmission dynamics of Covid-19 over time. Potential outcome framework was our basic model to evaluate the impact of the public health interventions on the spread of Covid-19. The potential outcome framework was often referred to the Neyman-Rubin model (Rubin 1974).

Potential outcomes consisted of actual (or observed) and counterfactual (hypothesized) outcomes. We were interested in number of cases of Covid-19 under some specific intervention. We observed the number of cases of Covid-19 (actual observation) without intervention or known intervention. However, we wanted to know what number of cases of Covid-19

(counterfactual, unobserved) would be if an alternative intervention was implemented. To evaluate the effect of intervention, we should compare the difference between the observed actual number of cases of Covid-19 and the counterfactual number of cases of Covid-19. Our aim was to learn the counterfactual outcomes of Covid-19 under a sequence of public health intervention options and evaluate the impact of the intervention strategies on the spread of Covid-19.

The Recurrent decoder (Figure 2) was an architecture for estimating the effects of intervention on the spread of Covid-19 over time [S4]. The decoder network used the hidden state computed by the encoder to initialize the state of an RNN in the decoder which predicted the counterfactual outcomes for a sequence of hypothesized future interventions [S4]. The decoder attempts to propagate the encoder representation forwards in time, using only the planned interventions and avoiding the covariates.

Training Algorithm for RNN Decoder

The architecture of the RNN decoder was shown in Figure 2. The difference between the RNN encoder and decoder was that RNN decoder removed the covariates from the input since the future covariates were unobservable and difficult to forecast. The training algorithm for RNN decoder was almost the same as that for RNN encoder except that the final hidden state in the RNN encoder was used as the initial state of the RNN decoder and covariates X were removed in the RNN decoder. During decoder training, the outcomes $(Y_{t+2}, \dots, Y_{t+\tau})$ from the observational data that were batched into a shorter sequences of up to τ steps. The value function is defined as

$$V(h_{t+\tau_b}) = \sum_{\tau=2}^{\min\{T-t, \tau_b\}} || y_{t+\tau} - \hat{y}_{t+\tau} ||^2 .$$

The initial learning rate in the updating parameters in the decoder training was 0.02 and learning rate decay was 0.0001.

Evaluation of the Intervention Strategies and Forecasting

After completion of the training, the decoder can be used to evaluate interventions. The potential outcome framework for treatment effect estimation which accounts for the time varying treatments [S4] was extended to evaluation of the effects of the interventions on the spread of Covid-19. Let $\tilde{H}_t = (\tilde{Y}_t, \tilde{A}_t)$ be the history of the outcomes (number of cases) $\tilde{Y}_t = (\bar{Y}_1, \dots, \bar{Y}_t)$, $\bar{Y}_t = (Y_t, \dots, Y_{t-l+1})$, and interventions $\tilde{A}_t = (A_1, \dots, A_t)$. Let $Y[\tilde{A}]$ be the potential outcomes that can be either observed or counterfactual, under each possible sequence of intervention \tilde{A} . The potential outcome framework assumed the existence of the hypothetical outcome with some interventions which was not observed in the data. The hypothetical outcome under hypothetical intervention was called counterfactual outcome. Given the history \tilde{H}_t and a sequence of planned interventions $\tilde{A}(t, t + \tau - 1) = (A_t, \dots, A_{t+\tau-1})$, the counterfactual outcome $Y_{t+\tau}[\tilde{A}(t, t + \tau - 1)]$ can be predicted by

$$E(Y_{t+\tau}[\tilde{A}(t, t + \tau - 1)] | \tilde{H}_t),$$

which defined the future dynamic trajectory of the Covid-19 under the planned sequence of interventions, given the previous history of Covid-19 and its environments. To make the prediction of the dynamic trajectory of the Covid-19 under the potential outcome framework to be identifiable, we need to make the following assumptions [S4].

Assumptions

We introduced assumptions in the Neyman-Rubin model [S4].

Assumption 1. (Consistency). If a nation received an intervention $A_t = a_t$, then the potential outcome for the intervention a_t which can be counterfactual was equal to the observed (factual) outcome $Y_{t+1}(a_t) = Y_{t+1}$.

Assumption 2. (Overlap). For all (a_1, \dots, a_{t-1}) , we had

$0 < P(A_t = a_t | A_1 = a_1, \dots, A_{t-1} = a_{t-1}) < 1$. In other words, at each time step, each intervention had non-zero probability of being implemented.

Assumption 3. Sequential strong ignorability. Conditional on $A_1 = a_1, \dots, A_{t-1} = a_{t-1}$, the potential outcomes Y_{t+1} were independent of A_t ,

$$Y_{t+1}(a_t) \perp\!\!\!\perp A_t | A_1 = a_1, \dots, A_{t-1} = a_{t-1}.$$

Assumption 3 implied that there was no confounders which affected both outcomes and interventions.

During evaluation, we did not have access to ground-truth outcomes. Therefore, we used the decoder to make one step ahead forecasting. The outcomes forecasted by the decoder $(\hat{Y}_{t+1}, \dots, \hat{Y}_{t+\tau-1})$ were recursively used as inputs. For each country, by running the trained decoder, with a sequence of planned interventions and recursively forecasted outcomes, we forecasted the response dynamics, i.e., the number of new cases of Covid-19 of the country over time under a sequence of interventions and evaluated the effects of various intervention strategies on controlling the spread of Covid-19. By running the decoder, we could select starting and ending time of different interventions and the optimal or appropriate interventions to give over time to obtain the best outcomes of controlling the spread of Covid-19 for each country.

References

- S1. Francois-Lavet V, Henderson P, Islam R, Bellemare MG, Pineau J. (2018). An Introduction to Deep Reinforcement Learning. arXiv:1811.12560.
- S2. Malik AA. (2020). Robots and COVID-19: Challenges in integrating robots for collaborative automation. arXiv:2006.15975.
- S3. Grigorescu S, Trasnea B, Cocias T, Macesanu G. (2019). A Survey of deep learning techniques for autonomous driving. arXiv:1910.07738.
- S4. Charpentier A, Elie R, Remlinger C. (2020). Reinforcement Learning in Economics and Finance. arXiv:2003.10014.
- S5. Yu C, Liu J, Nemati S. (2019). Reinforcement Learning in Healthcare: A Survey. arXiv:1908.08796.
- S6. Seinfeld JH and Lapidus L. (1968). Aspects of forward dynamic programming algorithm. Ind. Eng. Chem. Process Des. Dev. 7:(3) 475–478.

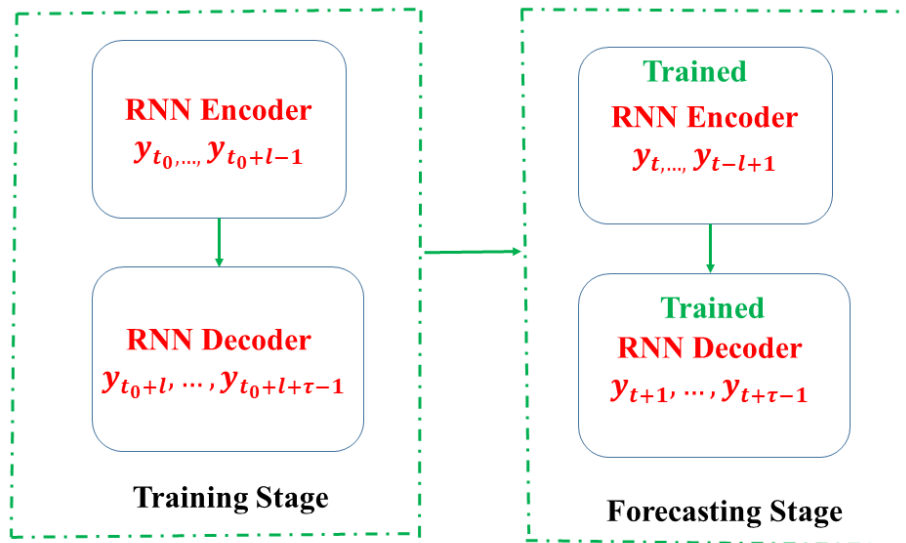


Figure S1. RNRL algorithm flowchart.

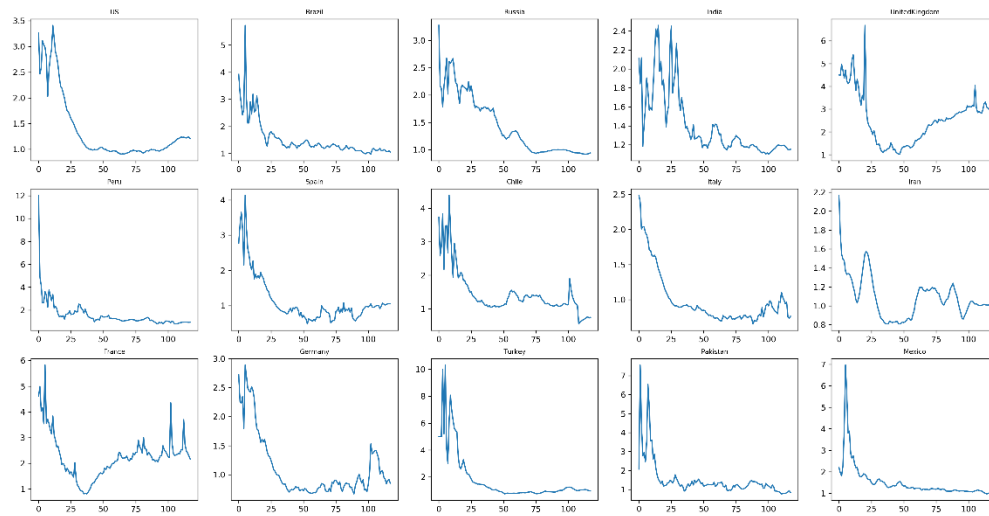


Figure S2. The reproduction number curves as a function of time in the top fifteen most-affected countries.

Table S1. One month forecasted cumulative cases of Covid-19 in top 15 most affected countries.															
	Brazil	Chile	France	Germany	India	Iran	Italy	Mexico	Pakistan	Peru	Russia	Spain	Turkey	United Kingdom	US
6/22/2020	1125456	274727	198208	192132	436823	206895	238731	185000	186130	258117	590143	246684	188755	306759	2305115
6/23/2020	1149484	279950	198582	192631	452161	209493	238953	189690	190186	260291	597399	246916	189938	307720	2336077
6/24/2020	1190453	255652	199101	193346	468562	211922	239066	196133	194186	263447	604829	247165	191114	308644	2372441
6/25/2020	1234839	259372	199182	193404	485943	214465	239815	201504	198343	267439	612065	247342	192708	309301	2407648
6/26/2020	1259991	263344	199060	193895	503709	216983	240111	207752	199680	271392	619080	247766	194174	310379	2450678
6/27/2020	1308836	267711	201314	194540	522355	219634	240367	213322	202394	275193	625737	248199	195578	311806	2499735
6/28/2020	1348556	271320	201314	196534	543255	222111	240542	217836	206041	278856	632468	248865	196958	312700	2542887
6/29/2020	1379842	275451	202332	198186	563243	224570	240716	221982	209596	282322	639111	249166	198346	313616	2582239
6/30/2020	1416489	278964	204356	200668	578575	226487	241123	226778	212727	285254	644454	249563	199792	314595	2615915
7/1/2020	1454109	282522	206400	203181	594324	228421	241408	231678	215767	288200	649733	249960	201064	315577	2650031
7/2/2020	1492729	285822	208464	205726	610501	230371	241694	236009	218849	291019	654760	250358	202149	316562	2684591
7/3/2020	1524297	289161	210549	208302	627119	232190	241980	239903	221976	293725	659811	250757	203180	317254	2716948
7/4/2020	1552524	292340	212655	210911	643184	234025	242266	243862	224693	296276	664802	251036	204215	317947	2746312
7/5/2020	1581274	294945	214782	213552	655390	235421	242553	247887	227037	298427	668872	251316	205256	318641	2771334
7/6/2020	1610556	297574	216283	215421	667827	236826	242840	251624	229405	300594	672781	251596	206302	319337	2796585
7/7/2020	1640380	300225	217795	217306	680501	238240	243041	255417	231695	302763	676634	251876	207221	320035	2822065
7/8/2020	1670756	302676	219317	219208	693415	239662	243242	258750	234007	304833	680295	252157	208003	320734	2847778
7/9/2020	1695412	305147	220851	221126	706574	240985	243444	261731	236343	306815	683964	252437	208744	321224	2871762
7/10/2020	1717328	307491	222394	223061	719195	242316	243645	264747	238363	308677	687581	252634	209489	321715	2893452
7/11/2020	1739528	309407	223949	225013	728722	243328	243847	267798	240101	310244	690525	252831	210235	322207	2911882
7/12/2020	1762015	311334	225044	226389	738375	244343	244049	270618	241852	311819	693348	253028	210985	322699	2930428
7/13/2020	1784792	313273	226144	227774	748156	245363	244190	273467	243539	313393	696125	253226	211642	323192	2949093
7/14/2020	1807864	315061	227249	229167	758067	246387	244332	275960	245238	314891	698759	253423	212201	323686	2967876
7/15/2020	1826498	316859	228360	230569	768108	247339	244473	278182	246949	316323	701395	253621	212730	324033	2985350
7/16/2020	1842994	318562	229476	231980	777688	248295	244615	280422	248425	317666	703990	253759	213261	324379	3001117
7/17/2020	1859638	319950	230598	233399	784884	249020	244757	282680	249691	318794	706098	253898	213793	324726	3014484
7/18/2020	1876434	321343	231387	234397	792148	249747	244899	284760	250964	319926	708117	254036	214326	325074	3027912
7/19/2020	1893380	322743	232178	235400	799479	250476	244998	286856	252188	321055	710102	254175	214793	325421	3041398
7/20/2020	1910480	324032	232972	236407	806877	251208	245097	288684	253419	322129	711981	254314	215190	325769	3054946
7/21/2020	1924243	325325	233768	237418	814344	251886	245197	290309	254655	323153	713860	254452	215566	326013	3067525

Table S2. One month reported and one month forecasted number of new cases of Covid-19 in top 15 most-affected countries.

	Brazil	Chile	France	Germany	India	Iran	Italy	Mexico	Pakistan	Peru	Russia	Spain	Turkey	United Kingdom	US
5/23/2020	16508	3536	340	276	6629	1869	669	3329	2164	4056	9434	466	1186	2960	21827
5/24/2020	15813	3709	15	342	7113	2180	531	2764	1748	4205	8599	482	1141	2412	20789
5/25/2020	11687	4895	358	272	6414	2023	300	2485	1356	4020	8946	-372	987	1631	18970
5/26/2020	16324	3964	-220	600	5843	1787	397	3455	1446	5772	8915	859	948	4052	18848
5/27/2020	20599	4328	191	324	7293	2080	584	3463	2076	6154	8338	0	1035	2020	18366
5/28/2020	26417	4654	3326	672	7300	2258	593	3377	2801	5874	8371	1647	1182	1889	22836
5/29/2020	26928	3695	559	726	8105	2819	516	3227	2429	6506	8572	658	1141	2099	24488
5/30/2020	33274	4220	1829	267	8336	2282	416	2885	3039	7386	8952	664	983	1612	24246
5/31/2020	16409	4830	257	221	8782	2516	333	3152	2964	8805	9268	251	839	1937	20129
6/1/2020	11598	5470	339	184	7761	2979	200	2771	3938	5563	8485	159	827	1580	17354
6/2/2020	28936	3528	-766	285	8821	3117	318	3891	4065	0	8858	294	786	1656	20891
6/3/2020	28633	4942	352	242	9633	3134	321	3912	4801	8875	8529	394	867	1878	19881
6/4/2020	30925	4664	767	351	9889	3574	177	4442	3985	4284	8823	334	988	1809	21295
6/5/2020	30830	4207	611	452	9471	2886	518	4346	4734	4202	8718	318	930	1655	25311
6/6/2020	27075	5246	579	526	10438	2269	270	3593	4960	4358	8846	332	878	1560	22684
6/7/2020	18912	6405	343	300	10864	2364	197	3484	4728	4757	8971	240	914	1327	17771
6/8/2020	15654	4696	211	359	8442	2043	280	2999	4646	3181	8970	167	989	1213	17472
6/9/2020	32091	3913	404	397	10218	2095	283	4199	5385	4040	8587	249	993	1747	18087
6/10/2020	32913	5697	545	16	10459	2011	202	4883	5834	5087	8393	314	922	1007	20834
6/11/2020	30412	5636	425	169	10930	2218	379	4790	6397	5965	8777	427	987	1272	22888
6/12/2020	25982	6754	727	535	11458	2369	163	5222	0	0	8961	502	1195	1542	25396
6/13/2020	21704	6509	526	41	11929	2430	346	3494	6472	5961	8697	396	1459	1426	25540
6/14/2020	17110	6938	407	251	11502	2472	338	4147	12073	8987	8809	323	1562	1514	19532
6/15/2020	20647	5143	152	164	10667	2449	301	3427	4443	3256	8217	181	1592	973	19968
6/16/2020	34918	5013	344	570	10974	2563	210	4599	5839	4164	8241	219	1467	1285	23705
6/17/2020	32188	36179	458	352	12881	2612	328	4930	5358	3752	7824	355	1429	1117	25559
6/18/2020	22765	4475	467	1213	13586	2596	331	5662	4944	3480	7772	585	1304	1218	27762
6/19/2020	54771	6290	811	482	14516	2615	-148	5030	6604	3537	7971	307	1214	1350	31527
6/20/2020	34666	5355	641	371	15403	2322	264	4717	4951	3413	7870	363	1248	1295	32718
6/21/2020	15762	5607	284	602	14831	2368	224	5343	4471	3598	7717	334	1192	1223	26358
6/22/2020	42115	32372	572	860	11541	1943	232	4455	5042	3181	6264	412	1070	956	23460
6/23/2020	24028	5223	374	498	15338	2597	221	4690	4056	2175	7256	232	1183	961	30962
6/24/2020	40969	-24299	518	715	16401	2430	113	6443	4000	3155	7430	248	1176	924	36365
6/25/2020	44386	3720	81	58	17381	2543	749	5371	4157	3992	7236	177	1594	657	35206
6/26/2020	25152	3972	-122	491	17765	2518	297	6248	1337	3954	7014	425	1466	1078	43030
6/27/2020	48845	4367	2254	645	18647	2651	255	5570	2714	3801	6657	432	1404	1427	49057
6/28/2020	39721	3609	0	1994	20899	2478	175	4514	3647	3663	6732	666	1380	894	43153
6/29/2020	31285	4131	1018	1652	19989	2459	174	4146	3556	3466	6643	301	1389	916	39352
6/30/2020	36647	3513	2024	2482	15332	1917	407	4796	3131	2933	5343	397	1446	979	33676
7/1/2020	37620	3558	2044	2513	15749	1933	285	4900	3040	2945	5279	397	1273	982	34115
7/2/2020	38619	3300	2064	2545	16178	1950	286	4331	3083	2820	5027	398	1085	985	34560
7/3/2020	31569	3339	2085	2577	16618	1820	286	3895	3127	2706	5051	399	1030	691	32357
7/4/2020	28227	3180	2106	2609	16064	1834	286	3959	2716	2551	4991	279	1035	693	29364
7/5/2020	28750	2605	2127	2641	12206	1397	287	4024	2344	2151	4070	280	1041	694	25022
7/6/2020	29282	2628	1501	1869	12437	1405	287	3737	2368	2167	3909	280	1046	696	25250

Table S3. Decrease rate of Covid-19 in 15 top most-affected countries.

	Brazil	Chile	France	Germany	India	Mexico	Pakistan	Peru	Russia	Spain	Turkey	United Kingdom	US
6/1/2020	-4811	640	82	-37	-1021	-381	974	-3242	-783	-92	-12	-357	-2775
6/2/2020	17338	-1942	-1105	101	1060	1120	127	-5563	373	135	-41	76	3537
6/3/2020	-303	1414	1118	-43	812	21	736	8875	-329	100	81	222	-1010
6/4/2020	2292	-278	415	109	256	530	-816	-4591	294	-60	121	-69	1414
6/5/2020	-95	-457	-156	101	-418	-96	749	-82	-105	-16	-58	-154	4016
6/6/2020	-3755	1039	-32	74	967	-753	226	156	128	14	-52	-95	-2627
6/7/2020	-8163	1159	-236	-226	426	-109	-232	399	125	-92	36	-233	-4913
6/8/2020	-3258	-1709	-132	59	-2422	-485	-82	-1576	-1	-73	75	-114	-299
6/9/2020	16437	-783	193	38	1776	1200	739	859	-383	82	4	534	615
6/10/2020	822	1784	141	-381	241	684	449	1047	-194	65	-71	-740	2747
6/11/2020	-2501	-61	-120	153	471	-93	563	878	384	113	65	265	2054
6/12/2020	-4430	1118	302	366	528	432	-6397	-5965	184	75	208	270	2508
6/13/2020	-4278	-245	-201	-494	471	-1728	6472	5961	-264	-106	264	-116	144
6/14/2020	-4594	429	-119	210	-427	653	5601	3026	112	-73	103	88	-6008
6/15/2020	3537	-1795	-255	-87	-835	-720	-7630	-5731	-592	-142	30	-541	436
6/16/2020	14271	-130	192	406	307	1172	1396	908	24	38	-125	312	3737
6/17/2020	-2730	31166	114	-218	1907	331	-481	-412	-417	136	-38	-168	1854
6/18/2020	-9423	-31704	9	861	705	732	-414	-272	-52	230	-125	101	2203
6/19/2020	32006	1815	344	-731	930	-632	1660	57	199	-278	-90	132	3765
6/20/2020	-20105	-935	-170	-111	887	-313	-1653	-124	-101	56	34	-55	1191
6/21/2020	-18904	252	-357	231	-572	626	-480	185	-153	-29	-56	-72	-6360
6/22/2020	26353	26765	288	258	-3290	-888	571	-417	-1453	78	-122	-267	-2898
6/23/2020	-18087	-27148	-198	-362	3798	235	-986	-1006	992	-180	112	5	7502
6/24/2020	16941	-29522	144	217	1063	1753	-56	981	174	16	-7	-37	5402
6/25/2020	3417	28019	-437	-657	980	-1072	156	837	-194	-72	418	-267	-1158
6/26/2020	-19234	252	-204	433	384	877	-2819	-38	-222	248	-128	421	7824
6/27/2020	23694	395	2377	154	881	-679	1377	-153	-357	8	-62	349	6027
6/28/2020	-9125	-758	-2254	1349	2252	-1055	933	-138	74	234	-24	-533	-5904
6/29/2020	-8435	522	1018	-342	-911	-369	-91	-197	-89	-364	9	22	-3801
6/30/2020	5362	-618	1006	830	-4657	650	-425	-533	-1300	95	57	63	-5675
7/1/2020	973	45	20	31	417	104	-91	13	-63	1	-173	3	439
7/2/2020	999	-257	20	31	429	-569	43	-126	-253	1	-188	3	445
7/3/2020	-7051	39	21	32	440	-436	44	-114	24	1	-55	-294	-2203
7/4/2020	-3342	-159	21	32	-554	64	-411	-155	-60	-119	5	2	-2993
7/5/2020	523	-575	21	33	-3858	65	-372	-400	-921	0	5	2	-4341
7/6/2020	532	23	625	773	232	287	24	16	160	0	5	2	228

Table S4. The forecasted number of new cases and cumulative cases of Covid-19 worldwide.

Date	Number of cumulative cases	Number of new cases
7/1/2020	11753592	288203
7/2/2020	12043437	289845
7/3/2020	12345042	301605
7/4/2020	12660899	315857
7/5/2020	12981957	321058
7/6/2020	13257595	275638
7/7/2020	13543161	285565
7/8/2020	13832305	289145
7/9/2020	14134929	302624
7/10/2020	14453430	318501
7/11/2020	14772312	318882
7/12/2020	15052103	279791
7/13/2020	15343718	291615
7/14/2020	15642703	298985
7/15/2020	15958411	315708
7/16/2020	16294483	336072
7/17/2020	16620164	325680
7/18/2020	16917180	297016
7/19/2020	17229728	312548
7/20/2020	17554293	324565
7/21/2020	17898315	344022
7/22/2020	18265403	367088
7/23/2020	18604512	339108
7/24/2020	18923994	319482
7/25/2020	19260138	336144

7/26/2020	19610176	350038
7/27/2020	19979034	368858
7/28/2020	20369123	390089
7/29/2020	20713498	344375
7/30/2020	21043679	330181
7/31/2020	21387536	343857
8/1/2020	21743276	355740
8/2/2020	22114219	370943
8/3/2020	22501647	387428
8/4/2020	22832824	331177
8/5/2020	23153573	320749
8/6/2020	23484377	330804
8/7/2020	23823960	339583
8/8/2020	24174603	350643
8/9/2020	24536731	362128
8/10/2020	24840776	304046
8/11/2020	25136638	295862
8/12/2020	25438331	301693
8/13/2020	25745044	306712
8/14/2020	26058423	313380

Table S5. The estimated intervention measures of the top fifteen most-affected countries.

Date	Brazil	Chile	France	Germany	India	Italy	Mexico	Pakistan	Peru	Russia	Spain	Turkey	United Kingdom	US
5/16/2020	0.782	0.329	0.187	0.185	0.177	0.326	0.200	0.238	0.089	0.561	0.327	0.106	0.395	0.447
5/17/2020	0.821	0.306	0.187	0.186	0.191	0.325	0.177	0.213	0.097	0.559	0.328	0.108	0.398	0.452
5/18/2020	0.825	0.291	0.187	0.187	0.210	0.325	0.152	0.185	0.104	0.558	0.328	0.109	0.400	0.455
5/19/2020	0.816	0.266	0.187	0.187	0.221	0.325	0.131	0.158	0.113	0.557	0.328	0.111	0.404	0.459
5/20/2020	0.810	0.238	0.187	0.187	0.238	0.325	0.115	0.130	0.126	0.557	0.328	0.116	0.408	0.463
5/21/2020	0.809	0.216	0.193	0.187	0.260	0.325	0.098	0.105	0.135	0.555	0.328	0.122	0.412	0.467
5/22/2020	0.805	0.194	0.196	0.187	0.283	0.325	0.084	0.085	0.157	0.552	0.328	0.128	0.411	0.471
5/23/2020	0.809	0.180	0.203	0.187	0.307	0.325	0.071	0.066	0.177	0.549	0.328	0.132	0.410	0.477
5/24/2020	0.799	0.166	0.209	0.187	0.335	0.326	0.064	0.056	0.207	0.546	0.328	0.136	0.409	0.470
5/25/2020	0.794	0.153	0.217	0.187	0.359	0.326	0.059	0.054	0.237	0.543	0.328	0.141	0.409	0.462
5/26/2020	0.795	0.144	0.223	0.187	0.387	0.326	0.052	0.056	0.254	0.540	0.328	0.145	0.408	0.458
5/27/2020	0.789	0.138	0.230	0.187	0.411	0.327	0.044	0.062	0.280	0.537	0.328	0.146	0.407	0.455
5/28/2020	0.780	0.134	0.229	0.187	0.435	0.326	0.048	0.067	0.300	0.536	0.328	0.146	0.406	0.454
5/29/2020	0.770	0.136	0.233	0.188	0.454	0.326	0.051	0.079	0.318	0.536	0.328	0.147	0.406	0.451
5/30/2020	0.755	0.142	0.233	0.189	0.475	0.326	0.055	0.089	0.332	0.540	0.328	0.147	0.406	0.449
5/31/2020	0.743	0.148	0.233	0.190	0.491	0.326	0.063	0.102	0.334	0.545	0.328	0.147	0.406	0.460
6/1/2020	0.730	0.152	0.233	0.191	0.505	0.327	0.071	0.113	0.335	0.550	0.328	0.148	0.406	0.471
6/2/2020	0.718	0.159	0.234	0.191	0.522	0.327	0.082	0.127	0.345	0.553	0.328	0.149	0.407	0.480
6/3/2020	0.705	0.172	0.235	0.192	0.536	0.327	0.097	0.139	0.345	0.557	0.328	0.150	0.406	0.483
6/4/2020	0.687	0.184	0.236	0.193	0.548	0.327	0.105	0.153	0.354	0.553	0.332	0.155	0.406	0.486
6/5/2020	0.669	0.201	0.237	0.193	0.565	0.327	0.119	0.152	0.352	0.548	0.335	0.160	0.406	0.484
6/6/2020	0.647	0.218	0.237	0.193	0.583	0.327	0.132	0.160	0.357	0.540	0.339	0.165	0.406	0.481
6/7/2020	0.625	0.239	0.238	0.193	0.602	0.327	0.141	0.178	0.368	0.532	0.342	0.171	0.406	0.482
6/8/2020	0.607	0.261	0.238	0.193	0.623	0.327	0.151	0.192	0.376	0.524	0.346	0.179	0.405	0.476
6/9/2020	0.589	0.286	0.239	0.192	0.637	0.327	0.165	0.203	0.386	0.518	0.349	0.186	0.404	0.467
6/10/2020	0.568	0.358	0.240	0.192	0.658	0.327	0.176	0.213	0.395	0.512	0.353	0.193	0.403	0.469

6/11/2020	0.550	0.401	0.241	0.198	0.679	0.327	0.193	0.223	0.399	0.510	0.353	0.201	0.402	0.469
6/12/2020	0.547	0.435	0.243	0.203	0.696	0.327	0.204	0.253	0.411	0.510	0.353	0.208	0.404	0.470
6/13/2020	0.542	0.464	0.245	0.209	0.705	0.327	0.221	0.275	0.416	0.511	0.353	0.215	0.405	0.466
6/14/2020	0.538	0.490	0.246	0.216	0.714	0.327	0.243	0.282	0.415	0.509	0.353	0.221	0.405	0.464
6/15/2020	0.541	0.518	0.246	0.220	0.719	0.327	0.255	0.292	0.418	0.508	0.353	0.225	0.407	0.466
6/16/2020	0.538	0.552	0.247	0.226	0.728	0.327	0.263	0.299	0.418	0.507	0.353	0.229	0.407	0.470
6/17/2020	0.539	0.517	0.248	0.234	0.732	0.327	0.275	0.310	0.417	0.506	0.353	0.234	0.409	0.465
6/18/2020	0.549	0.504	0.249	0.235	0.733	0.327	0.283	0.328	0.417	0.507	0.353	0.235	0.413	0.463
6/19/2020	0.525	0.504	0.249	0.237	0.733	0.327	0.301	0.327	0.416	0.505	0.353	0.235	0.411	0.461
6/20/2020	0.513	0.510	0.249	0.237	0.734	0.327	0.321	0.322	0.415	0.500	0.353	0.238	0.411	0.480
6/21/2020	0.508	0.473	0.303	0.286	0.688	0.352	0.328	0.338	0.399	0.491	0.364	0.286	0.400	0.451
6/22/2020	0.497	0.423	0.328	0.319	0.638	0.364	0.330	0.337	0.391	0.477	0.373	0.318	0.404	0.475
6/23/2020	0.495	0.408	0.335	0.328	0.588	0.368	0.333	0.340	0.389	0.473	0.375	0.327	0.405	0.478
6/24/2020	0.494	0.400	0.338	0.332	0.538	0.369	0.338	0.344	0.390	0.473	0.376	0.331	0.405	0.478
6/25/2020	0.493	0.397	0.340	0.334	0.514	0.370	0.343	0.348	0.391	0.473	0.377	0.333	0.406	0.478
6/26/2020	0.491	0.398	0.341	0.336	0.506	0.371	0.349	0.350	0.392	0.473	0.377	0.335	0.406	0.479
6/27/2020	0.490	0.398	0.344	0.339	0.504	0.372	0.353	0.351	0.393	0.473	0.378	0.338	0.406	0.479
6/28/2020	0.489	0.397	0.349	0.344	0.497	0.374	0.357	0.354	0.393	0.473	0.379	0.345	0.406	0.479
6/29/2020	0.488	0.395	0.352	0.348	0.489	0.375	0.360	0.356	0.394	0.473	0.379	0.349	0.407	0.480
6/30/2020	0.487	0.394	0.354	0.351	0.482	0.376	0.363	0.358	0.395	0.473	0.380	0.351	0.407	0.480
7/1/2020	0.487	0.395	0.356	0.353	0.477	0.376	0.365	0.360	0.396	0.473	0.380	0.353	0.407	0.480
7/2/2020	0.486	0.396	0.357	0.355	0.475	0.376	0.368	0.362	0.397	0.473	0.380	0.354	0.408	0.480
7/3/2020	0.485	0.397	0.358	0.356	0.475	0.376	0.371	0.364	0.398	0.474	0.381	0.355	0.408	0.480
7/4/2020	0.485	0.398	0.360	0.358	0.476	0.377	0.373	0.365	0.399	0.474	0.381	0.356	0.408	0.480
7/5/2020	0.484	0.399	0.361	0.360	0.477	0.377	0.375	0.367	0.400	0.474	0.381	0.357	0.409	0.480
7/6/2020	0.483	0.400	0.362	0.361	0.477	0.377	0.377	0.368	0.401	0.475	0.381	0.358	0.409	0.480

Table S6: Name of Countries in Ten Clusters

1: Austria, Belgium, Canada, France, Germany, Iran, Israel, KoreaSouth, Peru, Portugal, Switzerland, Turkey

2: Algeria, AntiguaandBarbuda, Benin, Bhutan, Burundi, CaboVerde, CentralAfricanRepublic, Chad, Comoros, CongoBrazzaville, CongoKinshasa, Croatia, ElSalvador, EquatorialGuinea, Eswatini,Ethiopia, Gabon, GuineaBissau, Guyana, Haiti,HolySee, Jamaica,Kosovo, Lesotho, Liberia, Malawi, Maldives, Mauritania, Monaco, Mongolia, Morocco, Nicaragua, PapuaNewGuinea, Paraguay, SaintLucia, SaoTomeandPrincipe, Senegal, SierraLeone, Somalia, SouthSudan, Sudan,Suriname, Tanzania, TimorLeste, Vietnam, Yemen, Zambia, Zimbabwe

3:Afghanistan, Argentina, Armenia, Azerbaijan, Bahrain, Bolivia, Cameroon, Guatemala, Honduras, Iraq, Kazakhstan, Nepal, Nigeria, Oman, Panama, SouthAfrica

4:Australia, Bangladesh, Belarus, Denmark, Ecuador, Finland, Ireland, Japan, Kuwait, Luxembourg, Malaysia, Netherlands, Qatar, Singapore, Sweden

5: Albania, Andorra, Angola, Bahamas, Barbados, Belize, BosniaandHerzegovina, Botswana, Brunei, Bulgaria, BurkinaFaso, Burma, Cambodia, CostaRica, CotedIvoire, Cuba, Cyprus, DiamondPrincess, Djibouti, Dominica, Eritrea, Estonia, Fiji, Gambia, Georgia, Greece, Grenada, Guinea, Hungary, Iceland, Jordan, Kenya, Kyrgyzstan, Laos, Latvia, Lebanon, Libya, Liechtenstein, Lithuania, Madagascar, Mali, Malta, Mauritius, Montenegro, Mozambique, MSZaandam, Namibia, NewZealand, Niger, NorthMacedonia, Rwanda, SaintKittsandNevis, SaintVincentandthe Grenadines, SanMarino, Seychelles, Slovakia, Slovenia, SriLanka, Syria, Thailand, Togo, TrinidadandTobago, Tunisia, Uganda, Uruguay, Uzbekistan, Venezuela,W estBankandGaza, WesternSahara

6 : UnitedArab Emirates

7: Italy, Spain, UnitedKingdom

8: Chile, Colombia, Czechia ,Dominican Republic, Egypt, Ghana, Indonesia, Mexico, Moldova, Norway, Pakistan, Philippines, Poland, Romania, SaudiArabia, Serbia, Tajikistan, Ukraine

9: Brazil, India, Russia, US

10: China

Table S7. The number of cumulative cases of Covid-19 of the 15 countries in the eighth cluster.

	Chile	Colombia	Czechia	Egypt	Ghana	Indonesia	Mexico	Moldova	Norway	Pakistan	Poland	Romania	Serbia	Tajikistan	Ukraine
6/22/2020	274727	74238	10588	57747	14537	46918	185000	14586	9202	186130	32305	24303	12964	5527	38051
6/23/2020	279950	76908	10613	60908	14537	48666	189690	14753	9295	190186	32604	24552	13060	5726	38758
6/24/2020	255652	80121	10741	62849	14963	50332	196133	15066	9337	194186	32760	24746	13164	5829	39619
6/25/2020	259372	81618	10869	64618	15420	51824	201504	15439	9338	198343	33047	25071	13336	5894	40587
6/26/2020	263344	86244	10962	66553	15892	53094	207752	15768	9318	199680	33347	25613	13474	5944	41738
6/27/2020	267711	91287	11157	68357	16185	54406	213322	16050	9252	202394	33625	26029	13702	5939	43034
6/28/2020	271320	98152	11484	70976	16862	56382	217836	16359	9443	206041	33939	26359	13953	6261	44282
6/29/2020	275451	105363	11821	73885	17181	58526	221982	16532	9555	209596	34133	26653	14227	6466	45573
6/30/2020	278964	115860	12044	82935	17632	63833	226778	16819	10078	212727	34361	26998	14409	6937	47686
7/1/2020	282522	127403	12271	91036	18095	69552	231678	17117	10630	215767	34621	27347	14595	7441	50253
7/2/2020	285822	140096	12502	99376	18570	75207	236009	17466	11212	218849	34957	27658	14782	7983	53298
7/3/2020	289161	154054	12737	108481	19057	80458	239903	17819	11825	221976	35327	27908	14972	8564	56866
7/4/2020	292340	169402	12977	118420	19406	85499	243862	18164	12472	224693	35744	28160	15165	9187	60794
7/5/2020	294945	186279	13147	129269	19761	90855	247887	18456	13155	227037	36178	28414	15369	9855	64965
7/6/2020	297574	199084	13320	140160	20123	96935	251624	18753	13655	229405	36671	28671	15615	10352	69701
7/7/2020	300225	212769	13495	149608	20491	104535	255417	19042	14174	231695	37214	28930	15882	10873	75020
7/8/2020	302676	227395	13672	159076	20866	112591	258750	19324	14713	234007	37809	29160	16162	11421	80947
7/9/2020	305147	243026	13852	169143	21248	120194	261731	19614	15272	236343	38483	29344	16451	11997	87464
7/10/2020	307491	259732	14034	179847	21519	126873	264747	19904	15852	238363	39243	29529	16745	12601	94481
7/11/2020	309407	277586	14162	191229	21794	133758	267798	20186	16454	240101	40108	29716	17042	13236	101670
7/12/2020	311334	290810	14335	202368	22073	141015	270618	20442	16890	241852	41094	29903	17342	13699	108673
7/13/2020	313273	304663	14533	211824	22355	148667	273467	20686	17337	243539	42239	30092	17655	14179	115511
7/14/2020	315061	319176	14750	221121	22640	156597	275960	20919	17795	245238	43570	30259	17973	14675	122220
7/15/2020	316859	334380	14982	230826	22930	163926	278182	21143	18266	246949	45125	30393	18293	15189	129027
7/16/2020	318562	350309	15229	240956	23134	170251	280422	21364	18749	248425	46957	30527	18609	15721	136189
7/17/2020	319950	366996	15487	251532	23341	176666	282680	21583	19245	249691	49129	30662	18916	16271	143363
7/18/2020	321343	379148	15739	261701	23549	183323	284760	21797	19600	250964	51718	30797	19212	16668	150206
7/19/2020	322743	391702	16003	270202	23759	190231	286856	21998	19961	252188	54794	30934	19497	17074	156761

7/20/2020	324032	404672	16280	278450	23971	197279	288684	22190	20330	253419	58417	31067	19774	17491	163080
7/21/2020	325325	418072	16571	286949	24185	203697	290309	22374	20705	254655	62598	31231	20045	17917	169386

Table S8. The number of cumulative cases of the 16 countries in the third cluster.

	Afghanistan	Argentina	Armenia	Cameroon	Guatemala	Honduras	Iraq	Kazakhstan	Nepal	Nigeria	Oman	Panama	South Africa
6/22/2020	29449	44421	20788	12643	13646	13590	32332	18431	9609	20836	30136	26746	103354
6/23/2020	29655	46649	21117	12801	14293	14215	34226	18950	10178	21530	32251	27488	109451
6/24/2020	29984	49551	21545	13044	15105	14839	36137	19505	10751	21996	33619	28065	114449
6/25/2020	30045	53147	22229	13387	15395	15508	38441	20046	11191	22573	34804	28801	119077
6/26/2020	30587	56593	23044	13387	16226	16354	40993	20155	11644	23158	36222	29826	124048
6/27/2020	30835	59921	23822	12903	16443	16600	43724	20736	12263	23839	37397	30653	129678
6/28/2020	31002	62940	24500	12991	17034	17754	46672	20734	12841	24638	38350	31425	137183
6/29/2020	31357	66173	25254	12944	17588	18876	49609	22062	13324	25139	39276	32479	143775
6/30/2020	31752	73150	25879	13196	18248	19705	54513	22823	13899	25725	40389	33291	149647
7/1/2020	32152	80597	26518	13454	18932	20571	60339	23610	14412	26324	41533	34124	155758
7/2/2020	32436	87910	27142	13716	19444	21475	66970	24423	14944	26937	43042	34921	162014
7/3/2020	32721	94791	27724	13983	19970	22418	73598	25265	15434	27564	44943	35736	168522
7/4/2020	33009	101681	28319	14256	20510	23401	79846	26136	15897	28012	47167	36571	174151
7/5/2020	33300	109073	28807	14534	21065	24115	85892	26764	16375	28467	49900	37209	179100
7/6/2020	33593	117001	29303	14732	21615	24852	92506	27406	16867	28930	53123	37858	184189
7/7/2020	33889	125217	29809	14932	22179	25611	100060	28064	17300	29400	56828	38519	189422
7/8/2020	34147	133066	30297	15135	22597	26394	108309	28738	17745	29877	60956	39298	194717
7/9/2020	34471	140274	30751	15358	23024	27200	116830	29428	18150	30363	65550	40318	200159
7/10/2020	34845	147336	31211	15622	23458	28029	124806	30135	18530	30707	70639	41578	204816
7/11/2020	35263	154754	31587	15912	23900	28626	131922	30639	18918	31055	76208	43098	208873
7/12/2020	35726	162545	31967	16226	24335	29235	139444	31152	19314	31408	82350	44807	213010
7/13/2020	36234	170453	32352	16531	24778	29857	147395	31674	19660	31764	89057	46752	217229
7/14/2020	36788	177864	32722	16834	25104	30493	155798	32204	20012	32124	96181	48978	221461
7/15/2020	37370	184554	33064	17135	25435	31142	164281	32744	20331	32489	103428	51570	225776
7/16/2020	38015	191010	33410	17438	25770	31804	172053	33292	20628	32746	110572	54653	229440
7/17/2020	38744	197692	33691	17749	26109	32276	178863	33681	20929	33006	117529	58317	232612
7/18/2020	39575	204607	33975	18069	26441	32756	185942	34075	21235	33268	124285	62604	235828
7/19/2020	40527	211526	34260	18394	26777	33242	193301	34473	21500	33531	131286	67457	239088

7/20/2020	41624	217922	34571	18712	27023	33736	200952	34876	21769	33797	138553	72803	242339
7/21/2020	42895	223628	34973	19020	27272	34237	208549	35284	22011	34099	145781	78578	245635
