

## **Genome-Wide Association Study Meta-analysis and Functional Annotation at Mitral Valve Prolapse Risk Loci**

Mengyao Yu<sup>1</sup>, PhD, Sergiy Kyryachenko<sup>1</sup>, PhD, Stephanie Debette<sup>2,3</sup>, MD, PhD, Philippe Amouyel<sup>4</sup>, MD, PhD, Jean-Jacques Schott<sup>5</sup>, PhD, Thierry Le Tourneau<sup>5</sup>, MD, PhD, Christian Dina<sup>5</sup>, PhD, Russell A Norris<sup>6,7</sup>, PhD, Albert A. Hagège<sup>8</sup>, MD, PhD, Xavier Jeunemaitre<sup>1</sup>, MD, PhD, Nabila Bouatia-Naji<sup>1\*</sup>, PhD

<sup>1</sup> PARCC, Inserm, Université de Paris, F-75015 Paris, France

<sup>2</sup> University of Bordeaux, Bordeaux Population Health Research Center, Inserm Center U1219, Bordeaux, France

<sup>3</sup> Department of Neurology, Bordeaux University Hospital, Inserm U1219, Bordeaux, France

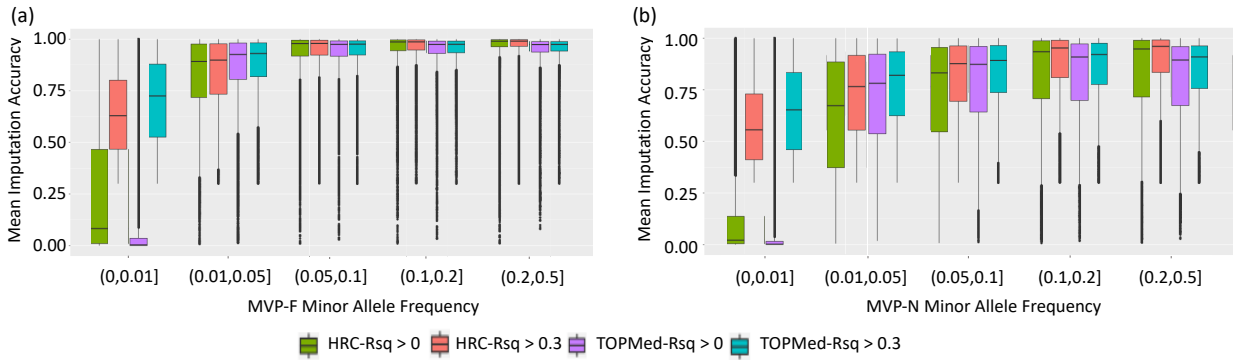
<sup>4</sup> Univ. Lille, Inserm, CHU Lille, Institut Pasteur de Lille, U1167 - RID-AGE - Labex DISTALZ - Risk factors and molecular determinants of aging-related disease, F-59000 Lille, France

<sup>5</sup> Université de Nantes, INSERM, CNRS, CHU Nantes, l'institut du thorax, F-44000 Nantes, France

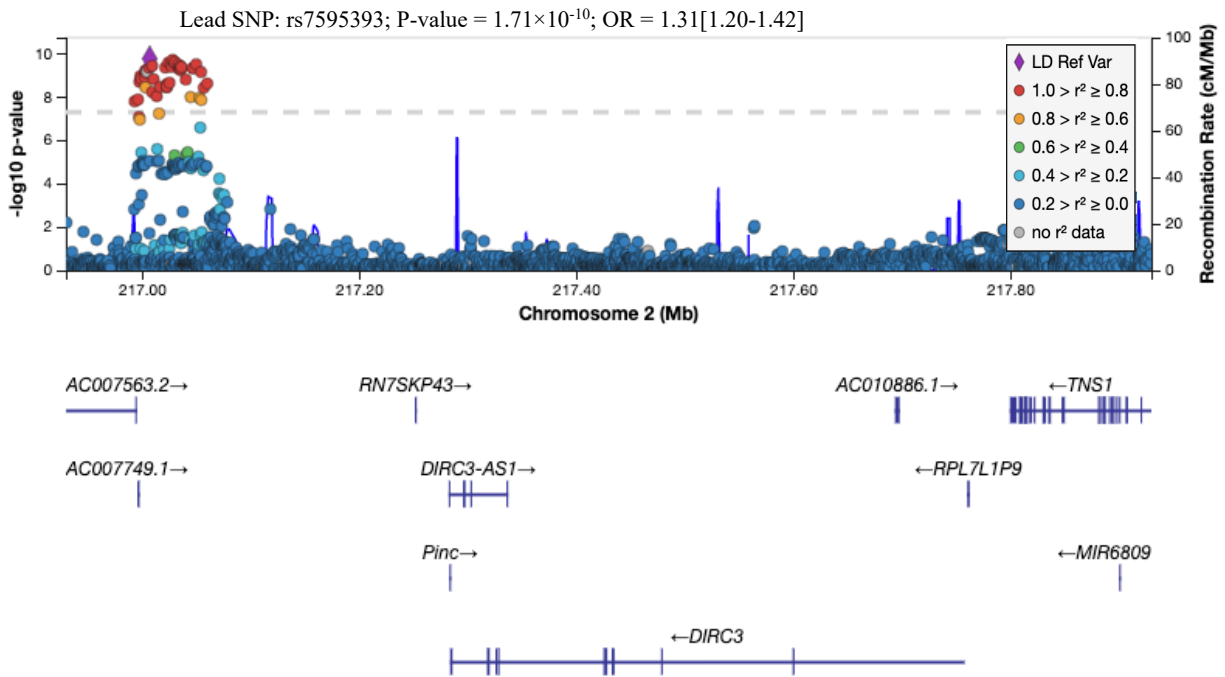
<sup>6</sup> Department of Regenerative Medicine and Cell Biology, Medical University of South Carolina, Charleston, SC, USA

<sup>7</sup> Department of Medicine, Medical University of South Carolina, Charleston, SC, USA

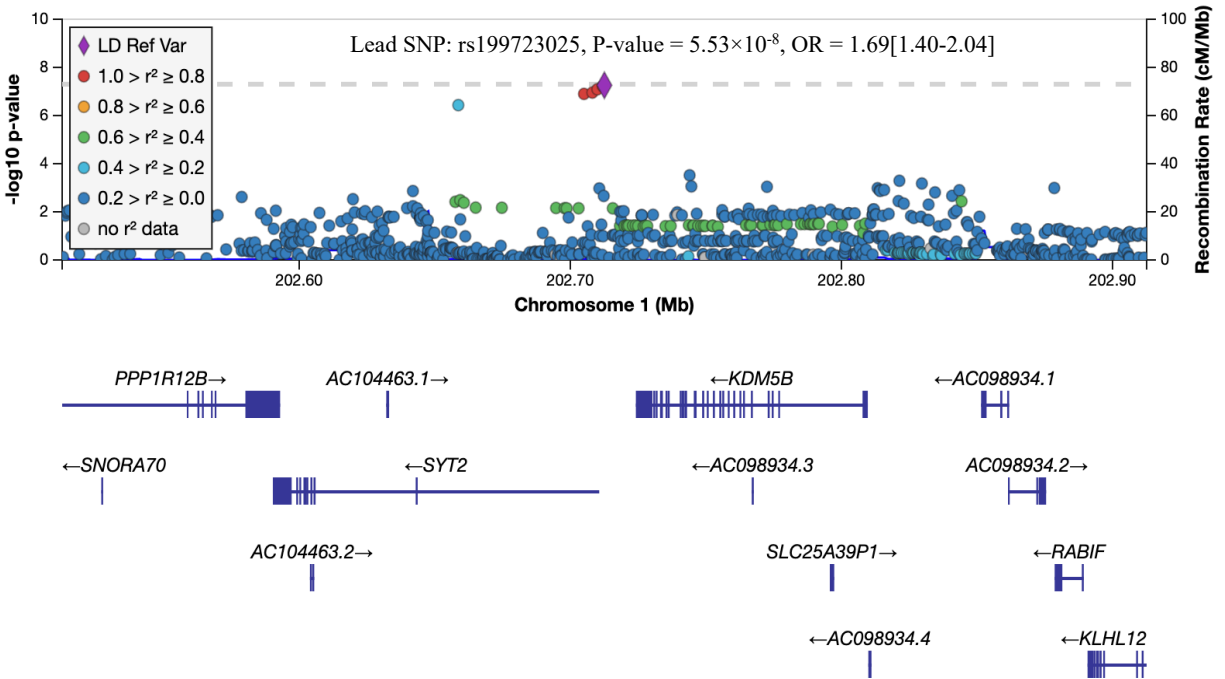
<sup>8</sup> Assistance Publique – Hôpitaux de Paris, Department of Cardiology, Hôpital Européen Georges Pompidou, 75015, Paris, France



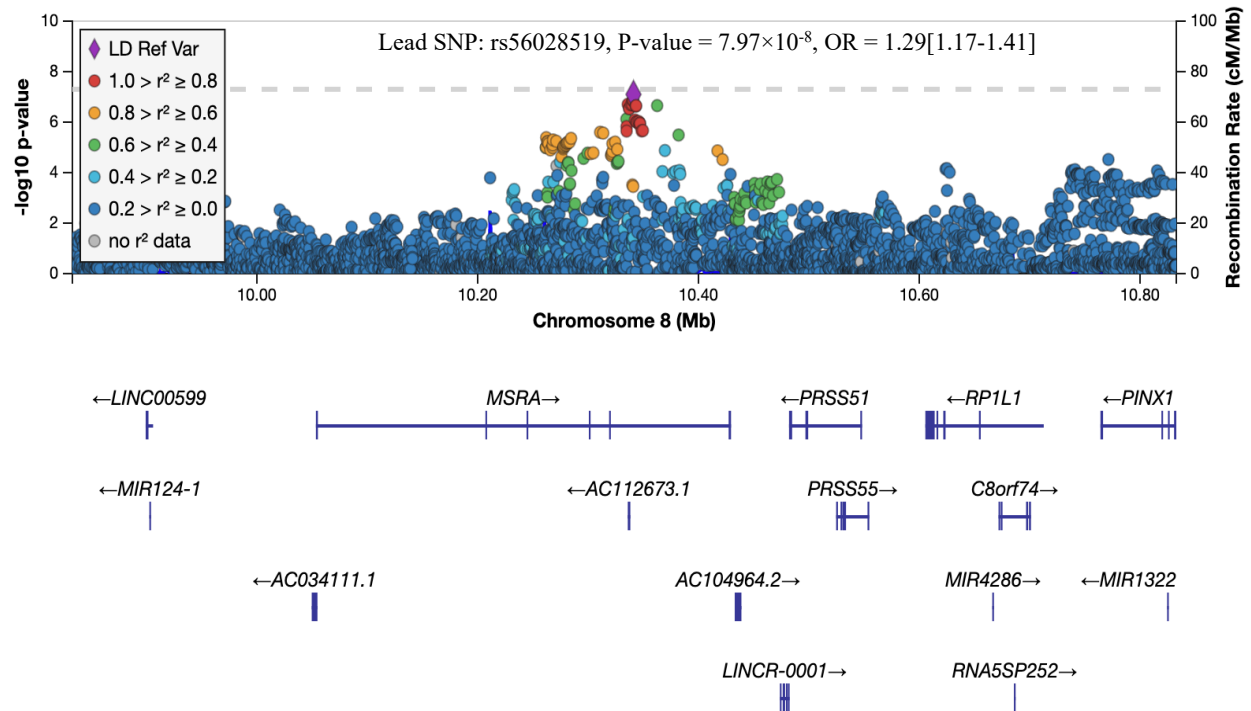
**Supplementary Figure I. Mean imputation accuracy in MAF categories in MVP-F and MVP-N using HRC and TopMED panels for SNPs of Chr2.** Box plots show the distribution of imputation accuracy for (a) variants in GWAS MVP-F and (b) variants in GWAS MVP-N using HRC and TOPMed.



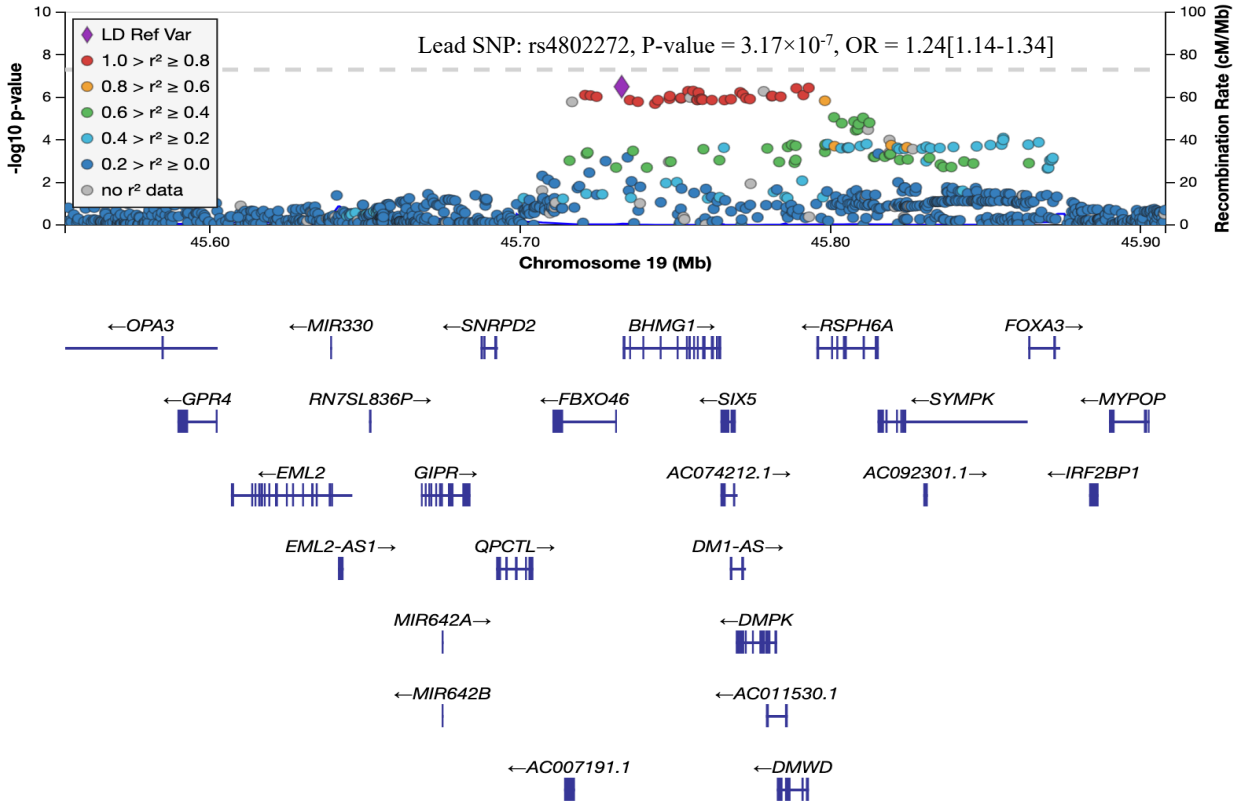
**Supplementary Figure II. Genomic context of novel association signals of MVP at *TNS1* locus.** The regional association plots (generated by LocusZoom) show the surrounding genes ( $\pm 500$  Kb). The lead SNPs per locus are labeled and the near SNPs are colored according to LD patterns with the lead SNP.



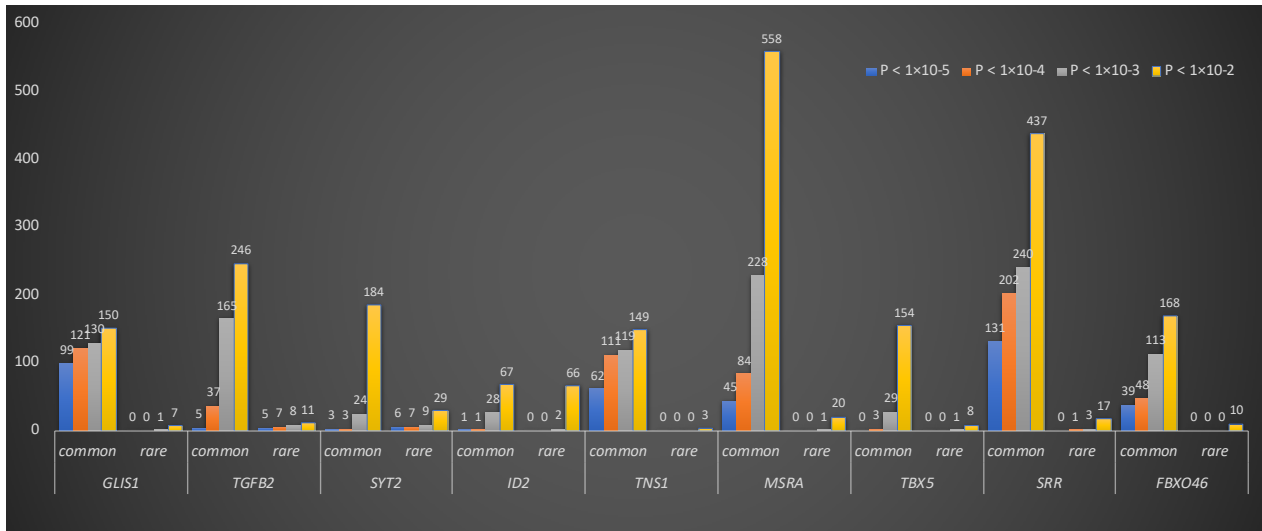
**Supplementary Figure III. Genomic context of novel association signals of MVP at SYT2 locus.** The regional association plots (generated by LocusZoom) show the surrounding genes ( $\pm 500$  Kb). The lead SNPs per locus are labeled and the near SNPs are colored according to LD patterns with the lead SNP.



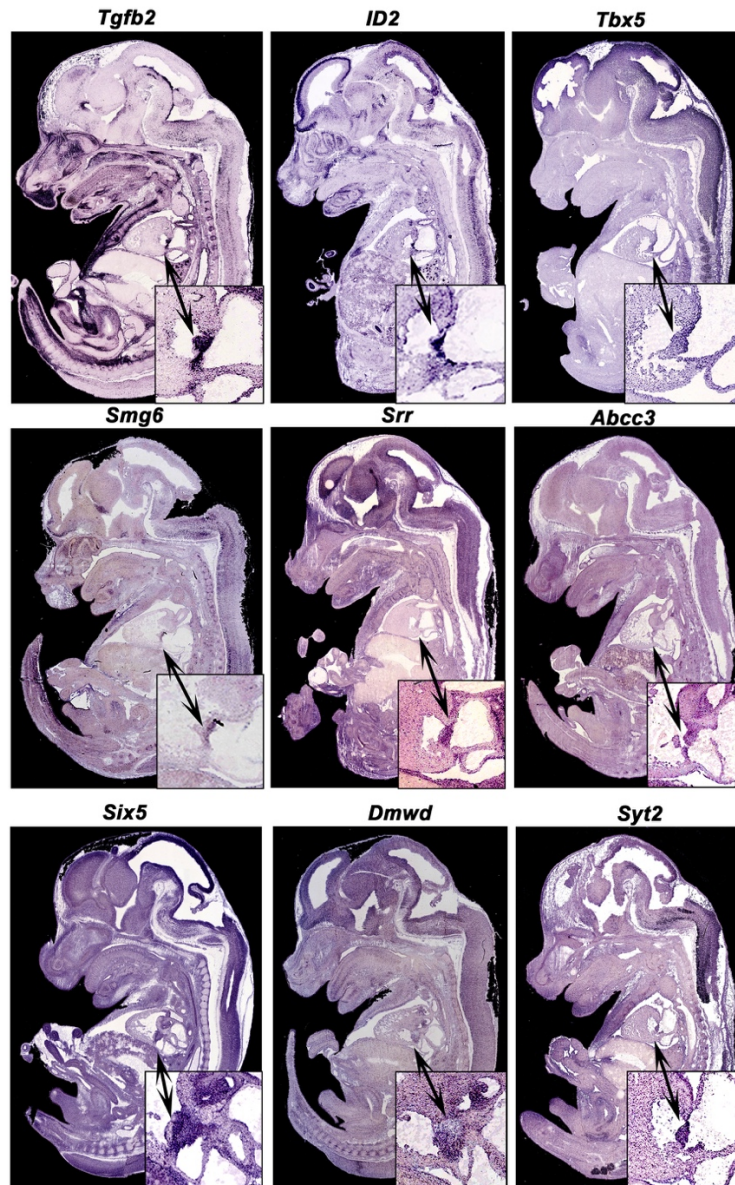
**Supplementary Figure IV Genomic context of novel association signals of MVP at *MSRA* locus.** The regional association plots (generated by LocusZoom) show the surrounding genes ( $\pm 500$  Kb). The lead SNPs per locus are labeled and the near SNPs are colored according to LD patterns with the lead SNP.



**Supplementary Figure V. Genomic context of novel association signals of MVP at *FBXO46* locus.** The regional association plots (generated by LocusZoom) show the surrounding genes ( $\pm 500$  Kb). The lead SNPs per locus are labeled and the near SNPs are colored according to LD patterns with the lead SNP.



**Supplementary Figure VI. Common and rare variants contributing to the highlighted genes.** Genes are highlighted by Meta-GWAS or gene-based association analysis. Variants are defined by  $\pm 500\text{kb}$  of the top variant for each locus. Genes located in the same locus at chromosome 8 are represented by *SRR*, as well as genes at chromosome 19, which are represented by *FBXO46*. Common variant (MAF > 0.05); Rare variant ( $0.01 < \text{MAF} < 0.05$ )



**Supplementary Figure VII.** Expression of GWAS candidate genes within the mitral valves. Section in situ of *Tgfb2*, *Id2*, *Tbx5*, *Smg6*, *Srr*, *Abcc3*, *Six5*, *Dmwd* and *Syt2* at E14.5 showing robust mRNA expression within the developing mitral leaflets. Boxes are higher magnifications of mitral valve regions.



Supplementary Table I. Functional annotation of variants in the genomic loci associated with MVP

LOCUS	IND*	uniqID	rsID	chr	pos	MAF†	gwasP	r2‡	IndSigSNP	nearestGene	func	CADD§	RDB
<i>SYT2</i>	1	1:202196119:C:T	rs78649964	1	202196119	0.02	8.60E-05	0.66	rs112998238	<i>LGR6</i>	intronic	5.31	5
		<b>1:202311574:C:T</b>	<b>rs111749026</b>	<b>1</b>	<b>202311574</b>	<b>0.02</b>	<b>4.05E-07</b>	<b>1.00</b>	<b>rs112998238</b>	<b><i>UBE2T</i></b>	<b>upstream</b>	<b>11.77</b>	<b>3a</b>
		<b>1:202377863:C:G</b>	<b>rs112998238</b>	<b>1</b>	<b>202377863</b>	<b>0.02</b>	<b>3.54E-07</b>	<b>1.00</b>	<b>rs112998238</b>	<b><i>PPP1R12B</i></b>	<b>intronic</b>	<b>0.17</b>	<b>7</b>
		1:202408478:A:G	rs113782613	1	202408478	0.02	3.73E-07	1.00	rs112998238	<i>PPP1R12B:RP11-175B9.2</i>	ncRNA_exonic	3.70	5
		1:202626750:C:T	rs13374701	1	202626750	0.02	0.003839	0.75	rs112998238	<i>SYT2</i>	intronic	5.41	4
		1:202628546:A:C	rs113288481	1	202628546	0.02	0.003286	0.78	rs112998238	<i>SYT2</i>	intronic	7.03	5
		1:202629900:C:T	rs77186822	1	202629900	0.02	0.004182	0.75	rs112998238	<i>SYT2</i>	intronic	0.72	7
		1:202634248:C:T	rs59524062	1	202634248	0.02	0.006702	0.75	rs112998238	<i>SYT2</i>	intronic	0.58	7
		1:202643904:A:G	rs111719840	1	202643904	0.02	0.006775	0.78	rs112998238	<i>SYT2</i>	intronic	12.21	7
		1:202663886:C:T	rs112186462	1	202663886	0.02	0.00693	0.78	rs112998238	<i>SYT2</i>	intronic	0.59	6
		1:202667067:C:T	rs61100519	1	202667067	0.02	0.00706	0.75	rs112998238	<i>SYT2</i>	intronic	3.64	5
		1:202667819:A:G	rs60329509	1	202667819	0.02	0.007178	0.75	rs112998238	<i>SYT2</i>	intronic	4.91	7
		1:202684824:A:G	rs80175962	1	202684824	0.02	0.007161	0.81	rs112998238	<i>SYT2</i>	intergenic	1.91	5
		1:202672219:A:C	rs113004178	1	202672219	0.03	0.007116	0.73	rs112998238	<i>SYT2</i>	intronic	7.91	5
		<b>1:202674197:C:T</b>	<b>rs4072661</b>	<b>1</b>	<b>202674197</b>	<b>0.04</b>	<b>1.26E-07</b>	<b>0.86</b>	<b>rs199723025</b>	<b><i>SYT2</i></b>	<b>intronic</b>	<b>4.90</b>	<b>3a</b>
1:202677295:C:G	rs17442900	1	202677295	0.04	1.11E-07	0.84	rs199723025	<i>SYT2</i>	intronic	1.51	5		
<b>2</b>	<b>1:202679139:C:G</b>	<b>rs78985989</b>	<b>1</b>	<b>202679139</b>	<b>0.05</b>	<b>8.13E-08</b>	<b>1.00</b>	<b>rs199723025</b>	<b><i>SYT2</i></b>	<b>intronic</b>	<b>10.49</b>	<b>2b</b>	
1:202681134:C:G	rs61820945	1	202681134	0.05	6.03E-08	1.00	rs199723025	<i>SYT2</i>	intergenic	0.56	5		
<b>1:202681728:A:AT</b>	<b>rs199723025</b>	<b>1</b>	<b>202681728</b>	<b>0.05</b>	<b>5.53E-08</b>	<b>1.00</b>	<b>rs199723025</b>	<b><i>SYT2</i></b>	<b>intergenic</b>	<b>8.83</b>	<b>NA</b>		
<b>3</b>	<b>1:202627846:C:G</b>	<b>rs61820924</b>	<b>1</b>	<b>202627846</b>	<b>0.02</b>	<b>3.69E-07</b>	<b>1.00</b>	<b>rs61820924</b>	<b><i>SYT2</i></b>	<b>intronic</b>	<b>NA</b>	<b>5</b>	
<i>TNSI</i>	1	2:217894234:A:G	rs12465506	2	217894234	0.49	4.90E-06	0.91	rs13426489	<i>RP11-574O16.1</i>	intergenic	0.21	6
		2:217905779:A:G	rs13412666	2	217905779	0.48	4.30E-06	0.99	rs13426489	<i>RP11-574O16.1</i>	intergenic	1.47	5
		2:217905832:A:G	rs13387042	2	217905832	0.48	4.41E-06	1.00	rs13426489	<i>RP11-574O16.1</i>	intergenic	2.41	7
		<b>2:217906246:G:T</b>	<b>rs13426489</b>	<b>2</b>	<b>217906246</b>	<b>0.48</b>	<b>3.54E-06</b>	<b>1.00</b>	<b>rs13426489</b>	<b><i>RP11-574O16.1</i></b>	<b>intergenic</b>	<b>5.34</b>	<b>7</b>
		2:217907514:C:G	rs12620095	2	217907514	0.45	1.02E-05	0.90	rs13426489	<i>RP11-574O16.1</i>	intergenic	2.62	6

	2:217909463:A:G	rs6721996	2	217909463	0.49	1.92E-05	0.95	rs13426489	<i>RP11-574O16.1</i>	intergenic	1.49	7
	2:217916052:G:T	rs12613955	2	217916052	0.45	5.73E-06	0.89	rs13426489	<i>RP11-574O16.1</i>	intergenic	6.28	6
	2:217920769:G:T	rs4442975	2	217920769	0.49	2.38E-05	0.93	rs13426489	<i>RP11-574O16.1</i>	intergenic	2.32	5
<b>2</b>	<b>2:217917882:A:G</b>	<b>rs2372946</b>	<b>2</b>	<b>217917882</b>	<b>0.43</b>	<b>2.57E-07</b>	<b>1.00</b>	<b>rs2372946</b>	<b><i>RP11-574O16.1</i></b>	<b>intergenic</b>	<b>13.08</b>	<b>5</b>
	2:217858659:C:T	rs2272525	2	217858659	0.23	3.35E-05	0.67	rs6435957	<i>AC007563.5</i>	ncRNA_intronic	1.67	NA
	2:217860799:A:T	rs10932687	2	217860799	0.23	1.63E-05	0.67	rs6435957	<i>RP11-574O16.1</i>	ncRNA_exonic	2.42	7
	2:217860966:C:T	rs12614767	2	217860966	0.23	1.45E-05	0.67	rs6435957	<i>RP11-574O16.1</i>	ncRNA_exonic	NA	7
	2:217863481:C:G	rs10932688	2	217863481	0.27	1.31E-05	0.81	rs6435957	<i>RP11-574O16.1</i>	intergenic	0.46	7
	2:217863554:A:T	rs10207736	2	217863554	0.30	3.62E-06	0.96	rs6435957	<i>RP11-574O16.1</i>	intergenic	2.14	7
	2:217864601:A:G	rs12464018	2	217864601	0.23	9.80E-06	0.67	rs6435957	<i>RP11-574O16.1</i>	intergenic	8.41	4
	:217865221:C:CTG	rs75693059	2	217865221	0.26	1.41E-05	0.77	rs6435957	<i>RP11-574O16.1</i>	intergenic	7.81	NA
	<b>2:217865319:C:T</b>	<b>rs16856812</b>	<b>2</b>	<b>217865319</b>	<b>0.23</b>	<b>8.96E-06</b>	<b>0.68</b>	<b>rs6435957</b>	<b><i>RP11-574O16.1</i></b>	<b>intergenic</b>	<b>5.96</b>	<b>2b</b>
	2:217865690:G:T	rs12477491	2	217865690	0.23	1.32E-05	0.67	rs6435957	<i>RP11-574O16.1</i>	intergenic	7.54	6
	2:217865714:A:T	rs12477493	2	217865714	0.26	1.14E-05	0.77	rs6435957	<i>RP11-574O16.1</i>	intergenic	8.27	6
	2:217865990:G:T	rs10932689	2	217865990	0.26	1.20E-05	0.77	rs6435957	<i>RP11-574O16.1</i>	intergenic	1.91	6
	2:217866038:A:G	rs10932690	2	217866038	0.26	1.22E-05	0.77	rs6435957	<i>RP11-574O16.1</i>	intergenic	1.89	6
	2:217866364:A:G	rs12613030	2	217866364	0.22	1.34E-05	0.67	rs6435957	<i>RP11-574O16.1</i>	intergenic	3.72	7
	2:217871382:A:G	rs60977503	2	217871382	0.23	8.91E-06	0.64	rs6435957	<i>RP11-574O16.1</i>	intergenic	1.19	6
	2:217878159:C:T	rs58844941	2	217878159	0.23	9.42E-06	0.70	rs6435957	<i>RP11-574O16.1</i>	intergenic	3.62	5

	<b>2:217878209:C:T</b>	<b>rs6435957</b>	<b>2</b>	<b>217878209</b>	<b>0.31</b>	<b>2.53E-06</b>	<b>1.00</b>	<b>rs6435957</b>	<b>RP11-574O16.1</b>	<b>intergenic</b>	<b>2.62</b>	<b>6</b>
	2:217879696:A:C	rs10932691	2	217879696	0.25	8.50E-06	0.68	rs6435957	RP11-574O16.1	intergenic	3.08	5
	2:217881943:C:T	rs12614773	2	217881943	0.23	3.44E-05	0.66	rs6435957	RP11-574O16.1	intergenic	4.49	5
	2:217884960:A:G	rs67827031	2	217884960	0.23	2.81E-05	0.67	rs6435957	RP11-574O16.1	intergenic	3.34	6
	2:217885012:C:T	rs66500840	2	217885012	0.24	3.49E-05	0.68	rs6435957	RP11-574O16.1	intergenic	3.15	7
	2:217885121:A:G	rs17833842	2	217885121	0.23	3.62E-05	0.67	rs6435957	RP11-574O16.1	intergenic	0.03	7
	<b>2:217887800:A:G</b>	<b>rs12623304</b>	<b>2</b>	<b>217887800</b>	<b>0.24</b>	<b>3.15E-05</b>	<b>0.68</b>	<b>rs6435957</b>	<b>RP11-574O16.1</b>	<b>intergenic</b>	<b>14.25</b>	<b>7</b>
	<b>2:217892371:A:C</b>	<b>rs10211289</b>	<b>2</b>	<b>217892371</b>	<b>0.29</b>	<b>1.22E-05</b>	<b>0.70</b>	<b>rs6435957</b>	<b>RP11-574O16.1</b>	<b>intergenic</b>	<b>3.05</b>	<b>3a</b>
	2:217892714:C:T	rs2372937	2	217892714	0.29	1.31E-05	0.70	rs6435957	RP11-574O16.1	intergenic	NA	6
	2:217892870:A:G	rs4315498	2	217892870	0.24	1.63E-05	0.64	rs6435957	RP11-574O16.1	intergenic	1.48	6
<b>3</b>	2:217893189:A:G	rs55999136	2	217893189	0.29	1.67E-05	0.70	rs6435957	RP11-574O16.1	intergenic	1.29	7
	2:217893936:A:G	rs67188612	2	217893936	0.24	2.05E-05	0.63	rs6435957	RP11-574O16.1	intergenic	0.77	6
	2:217894058:A:G	rs62174831	2	217894058	0.29	1.76E-05	0.69	rs6435957	RP11-574O16.1	intergenic	0.18	6
	2:217894149:A:G	rs62174832	2	217894149	0.29	1.74E-05	0.70	rs6435957	RP11-574O16.1	intergenic	NA	6
	2:217894756:C:T	rs4491709	2	217894756	0.29	1.79E-05	0.69	rs6435957	RP11-574O16.1	intergenic	NA	6
	217894898:T:TTGT	rs3084573	2	217894898	0.29	1.84E-05	0.69	rs6435957	RP11-574O16.1	intergenic	3.09	NA
	2:217895109:C:G	rs2372938	2	217895109	0.29	1.85E-05	0.69	rs6435957	RP11-574O16.1	intergenic	2.87	7
	2:217895626:A:G	rs12621130	2	217895626	0.24	2.09E-05	0.63	rs6435957	RP11-574O16.1	intergenic	4.40	6
	2:217896410:A:G	rs115408807	2	217896410	0.24	1.88E-05	0.63	rs6435957	RP11-574O16.1	intergenic	0.19	NA

2:217896449:A:G	rs62174837	2	217896449	0.29	1.63E-05	0.69	rs6435957	<i>RP11-574O16.1</i>	intergenic	1.38	5
2:217897341:A:G	rs62174839	2	217897341	0.29	1.14E-05	0.67	rs6435957	<i>RP11-574O16.1</i>	intergenic	2.15	7
2:217898935:C:T	rs2372939	2	217898935	0.25	1.11E-05	0.61	rs6435957	<i>RP11-574O16.1</i>	intergenic	1.18	6
2:217899252:C:G	rs4583440	2	217899252	0.29	1.46E-05	0.67	rs6435957	<i>RP11-574O16.1</i>	intergenic	0.70	7
2:217901803:C:T	rs12615418	2	217901803	0.25	1.33E-05	0.61	rs6435957	<i>RP11-574O16.1</i>	intergenic	2.92	5
2:217901910:A:G	rs12621884	2	217901910	0.25	1.36E-05	0.61	rs6435957	<i>RP11-574O16.1</i>	intergenic	0.19	5
935:G:GGCCTGTG	rs141554046	2	217901935	0.25	1.52E-05	0.61	rs6435957	<i>RP11-574O16.1</i>	intergenic	6.65	NA
<b>2:217902364:A:G</b>	<b>rs7421376</b>	<b>2</b>	<b>217902364</b>	<b>0.25</b>	<b>1.32E-05</b>	<b>0.61</b>	<b>rs6435957</b>	<b><i>RP11-574O16.1</i></b>	<b>intergenic</b>	<b>22.10</b>	<b>3a</b>
2:217909861:C:G	rs12622764	2	217909861	0.25	1.30E-05	0.61	rs6435957	<i>RP11-574O16.1</i>	intergenic	3.10	7
2:217910311:A:C	rs66466850	2	217910311	0.25	1.36E-05	0.61	rs6435957	<i>RP11-574O16.1</i>	intergenic	5.47	7
2:217910588:C:T	rs17778091	2	217910588	0.25	1.49E-05	0.61	rs6435957	<i>RP11-574O16.1</i>	intergenic	7.04	5
2:217912419:C:T	rs56372055	2	217912419	0.25	1.12E-05	0.61	rs6435957	<i>RP11-574O16.1</i>	intergenic	0.34	4
2:217917222:A:C	rs59562447	2	217917222	0.25	1.15E-05	0.60	rs6435957	<i>RP11-574O16.1</i>	intergenic	3.07	5
<b>2:217919811:A:G</b>	<b>rs17778329</b>	<b>2</b>	<b>217919811</b>	<b>0.25</b>	<b>1.35E-05</b>	<b>0.60</b>	<b>rs6435957</b>	<b><i>RP11-574O16.1</i></b>	<b>intergenic</b>	<b>13.32</b>	<b>2b</b>
2:217923013:A:T	rs17778427	2	217923013	0.25	1.67E-05	0.60	rs6435957	<i>RP11-574O16.1</i>	intergenic	4.89	6
2:217923605:G:T	rs17835044	2	217923605	0.25	1.55E-05	0.60	rs6435957	<i>RP11-574O16.1</i>	intergenic	0.29	5
2:217857450:C:T	rs2252488	2	217857450	0.31	1.57E-08	0.87	rs7595393	<i>AC007563.5</i>	ncRNA_intronic	3.15	5
2:217860468:C:G	rs4396687	2	217860468	0.31	1.30E-08	0.87	rs7595393	<i>RP11-574O16.1</i>	upstream	0.36	7
2:217861522:C:T	rs2888449	2	217861522	0.31	8.32E-08	0.86	rs7595393	<i>RP11-574O16.1</i>	downstream	3.46	5

2:217861809:C:T	rs4571035	2	217861809	0.34	1.96E-09	0.98	rs7595393	<i>RP11-574O16.1</i>	downstream	3.43	7
2:217862122:A:T	rs2372931	2	217862122	0.42	1.10E-07	0.72	rs7595393	<i>RP11-574O16.1</i>	downstream	4.09	6
2:217862696:G:T	rs10195963	2	217862696	0.34	1.08E-09	0.98	rs7595393	<i>RP11-574O16.1</i>	intergenic	3.50	5
2:217863335:A:AT	rs67177828	2	217863335	0.34	1.43E-09	0.99	rs7595393	<i>RP11-574O16.1</i>	intergenic	3.09	NA
2:217866841:A:T	rs2888450	2	217866841	0.33	1.24E-09	0.94	rs7595393	<i>RP11-574O16.1</i>	intergenic	2.78	5
2:217867417:A:G	rs4254482	2	217867417	0.33	5.86E-10	0.94	rs7595393	<i>RP11-574O16.1</i>	intergenic	1.26	6
2:217867433:A:G	rs2372932	2	217867433	0.28	3.60E-09	0.75	rs7595393	<i>RP11-574O16.1</i>	intergenic	1.37	6
2:217867564:A:G	rs6435956	2	217867564	0.33	6.71E-10	0.94	rs7595393	<i>RP11-574O16.1</i>	intergenic	3.06	6
2:217867889:G:T	rs4255939	2	217867889	0.33	7.47E-10	0.94	rs7595393	<i>RP11-574O16.1</i>	intergenic	2.76	7
2:217870654:C:T	rs10192415	2	217870654	0.34	4.44E-10	0.98	rs7595393	<i>RP11-574O16.1</i>	intergenic	2.95	6
<b>2:217871254:C:G</b>	<b>rs7595393</b>	<b>2</b>	<b>217871254</b>	<b>0.34</b>	<b>1.71E-10</b>	<b>1.00</b>	<b>rs7595393</b>	<b><i>RP11-574O16.1</i></b>	<b>intergenic</b>	<b>0.45</b>	<b>7</b>
2:217873530:C:T	rs2372934	2	217873530	0.37	5.87E-09	0.88	rs7595393	<i>RP11-574O16.1</i>	intergenic	3.14	4
<b>2:217873589:C:G</b>	<b>rs2372935</b>	<b>2</b>	<b>217873589</b>	<b>0.34</b>	<b>3.63E-10</b>	<b>1.00</b>	<b>rs7595393</b>	<b><i>RP11-574O16.1</i></b>	<b>intergenic</b>	<b>1.56</b>	<b>3a</b>
2:217874896:A:C	rs6733648	2	217874896	0.32	1.50E-09	0.93	rs7595393	<i>RP11-574O16.1</i>	intergenic	0.87	5
2:217877730:A:G	rs35120201	2	217877730	0.35	9.13E-09	0.81	rs7595393	<i>RP11-574O16.1</i>	intergenic	2.45	7
2:217879863:G:T	rs10932692	2	217879863	0.38	5.77E-08	0.70	rs7595393	<i>RP11-574O16.1</i>	intergenic	NA	6
2:217880831:G:T	rs6723019	2	217880831	0.32	3.44E-09	0.89	rs7595393	<i>RP11-574O16.1</i>	intergenic	5.63	5
2:217885659:C:T	rs10177578	2	217885659	0.34	4.35E-10	0.96	rs7595393	<i>RP11-574O16.1</i>	intergenic	1.70	7
2:217886970:A:G	rs4435428	2	217886970	0.32	2.60E-09	0.89	rs7595393	<i>RP11-574O16.1</i>	intergenic	1.36	7

4

2:217886991:T:TG	rs34787363	2	217886991	0.32	3.62E-09	0.89	rs7595393	<i>RP11-574O16.1</i>	intergenic	0.76	NA
2:217887021:A:G	rs4276003	2	217887021	0.32	3.20E-09	0.89	rs7595393	<i>RP11-574O16.1</i>	intergenic	0.46	7
<b>2:217888515:C:G</b>	<b>rs2372936</b>	<b>2</b>	<b>217888515</b>	<b>0.33</b>	<b>2.62E-10</b>	<b>0.94</b>	<b>rs7595393</b>	<b><i>RP11-574O16.1</i></b>	<b>intergenic</b>	<b>12.65</b>	<b>5</b>
2:217889460:C:T	rs7425648	2	217889460	0.32	2.19E-09	0.89	rs7595393	<i>RP11-574O16.1</i>	intergenic	0.19	7
2:217890643:A:G	rs6716542	2	217890643	0.32	2.96E-10	0.88	rs7595393	<i>RP11-574O16.1</i>	intergenic	4.44	7
2:217891692:A:G	rs17777330	2	217891692	0.32	4.04E-10	0.88	rs7595393	<i>RP11-574O16.1</i>	intergenic	8.90	6
<b>2:217892397:A:G</b>	<b>rs10211546</b>	<b>2</b>	<b>217892397</b>	<b>0.32</b>	<b>1.93E-10</b>	<b>0.88</b>	<b>rs7595393</b>	<b><i>RP11-574O16.1</i></b>	<b>intergenic</b>	<b>2.54</b>	<b>3a</b>
2:217894403:C:G	rs12465515	2	217894403	0.33	2.81E-10	0.92	rs7595393	<i>RP11-574O16.1</i>	intergenic	9.69	6
2:217894535:C:G	rs34909633	2	217894535	0.33	2.46E-10	0.92	rs7595393	<i>RP11-574O16.1</i>	intergenic	1.11	6
2:217897541:C:T	rs13399995	2	217897541	0.33	3.13E-10	0.93	rs7595393	<i>RP11-574O16.1</i>	intergenic	4.87	5
2:217898731:C:T	rs10199394	2	217898731	0.33	4.98E-10	0.92	rs7595393	<i>RP11-574O16.1</i>	intergenic	1.47	7
2:217899024:C:T	rs2372940	2	217899024	0.33	4.31E-10	0.94	rs7595393	<i>RP11-574O16.1</i>	intergenic	3.28	7
2:217899308:C:G	rs2372941	2	217899308	0.33	5.64E-10	0.94	rs7595393	<i>RP11-574O16.1</i>	intergenic	1.14	7
2:217899835:C:G	rs6705818	2	217899835	0.33	3.86E-10	0.92	rs7595393	<i>RP11-574O16.1</i>	intergenic	NA	6
2:217900296:C:T	rs6721811	2	217900296	0.33	4.99E-10	0.92	rs7595393	<i>RP11-574O16.1</i>	intergenic	2.39	6
2:217900397:A:G	rs6735298	2	217900397	0.33	4.12E-10	0.92	rs7595393	<i>RP11-574O16.1</i>	intergenic	2.12	7
2:217904513:C:G	rs2888451	2	217904513	0.32	1.55E-09	0.89	rs7595393	<i>RP11-574O16.1</i>	intergenic	2.00	5
2:217908985:C:T	rs4621152	2	217908985	0.36	1.00E-08	0.72	rs7595393	<i>RP11-574O16.1</i>	intergenic	5.36	4
<b>2:217910910:G:T</b>	<b>rs6723013</b>	<b>2</b>	<b>217910910</b>	<b>0.33</b>	<b>4.65E-10</b>	<b>0.93</b>	<b>rs7595393</b>	<b><i>RP11-574O16.1</i></b>	<b>intergenic</b>	<b>1.60</b>	<b>3a</b>

	2:217911504:A:G	rs6708579	2	217911504	0.33	4.61E-10	0.92	rs7595393	<i>RP11-574O16.1</i>	intergenic	0.37	5
	2:217914112:A:C	rs2372945	2	217914112	0.34	3.09E-10	0.86	rs7595393	<i>RP11-574O16.1</i>	intergenic	0.26	6
	2:217917167:A:G	rs11894340	2	217917167	0.36	1.09E-08	0.72	rs7595393	<i>RP11-574O16.1</i>	intergenic	NA	5
	2:217918571:C:T	rs7600412	2	217918571	0.34	7.00E-10	0.86	rs7595393	<i>RP11-574O16.1</i>	intergenic	1.07	6
	2:217918751:C:T	rs10183545	2	217918751	0.36	1.36E-08	0.72	rs7595393	<i>RP11-574O16.1</i>	intergenic	3.61	7
	2:217921121:C:G	rs10932693	2	217921121	0.32	3.71E-09	0.87	rs7595393	<i>RP11-574O16.1</i>	intergenic	3.90	5
	2:217924261:A:G	rs7562029	2	217924261	0.32	2.36E-09	0.87	rs7595393	<i>RP11-574O16.1</i>	intergenic	3.79	4
<b>MSRA</b>	8:10192377:C:G	rs11774474	8	10192377	0.40	7.52E-07	0.67	rs11779480	<i>MSRA</i>	intronic	2.42	4
<b>1</b>	<b>8:10220195:C:G</b>	<b>rs11779480</b>	<b>8</b>	<b>10220195</b>	<b>0.38</b>	<b>2.22E-07</b>	<b>1.00</b>	<b>rs11779480</b>	<b><i>MSRA</i></b>	<b>intronic</b>	<b>4.24</b>	<b>5</b>
	8:10224998:A:T	rs6601449	8	10224998	0.49	9.05E-05	0.61	rs11779480	<i>MSRA</i>	intronic	NA	7
	8:10239612:C:G	rs10095190	8	10239612	0.42	3.24E-06	0.73	rs11779480	<i>MSRA</i>	intronic	2.42	7
	8:10119629:A:C	rs4570161	8	10119629	0.31	9.92E-06	0.76	rs4841315	<i>MSRA</i>	intronic	0.13	5
	8:10119709:G:T	rs4288377	8	10119709	0.31	4.12E-06	0.72	rs4841315	<i>MSRA</i>	intronic	3.35	6
	8:10120879:C:T	rs9650648	8	10120879	0.31	6.03E-06	0.77	rs4841315	<i>MSRA</i>	intronic	2.05	7
	8:10121022:C:T	rs9650649	8	10121022	0.31	6.03E-06	0.77	rs4841315	<i>MSRA</i>	intronic	1.95	7
	8:10121668:A:C	rs35524676	8	10121668	0.31	7.12E-06	0.77	rs4841315	<i>MSRA</i>	intronic	2.45	5
	8:10123493:C:G	rs35287467	8	10123493	0.31	1.26E-05	0.77	rs4841315	<i>MSRA</i>	intronic	2.53	7
	8:10125520:A:G	rs13258691	8	10125520	0.31	1.01E-05	0.76	rs4841315	<i>MSRA</i>	intronic	4.74	4
	8:10125566:C:G	rs34514972	8	10125566	0.31	7.94E-06	0.76	rs4841315	<i>MSRA</i>	intronic	NA	4
	8:10125892:A:ACT	rs35796879	8	10125892	0.31	5.06E-06	0.77	rs4841315	<i>MSRA</i>	intronic	4.66	NA
	8:10128894:A:C	rs79727658	8	10128894	0.31	5.71E-06	0.77	rs4841315	<i>MSRA</i>	intronic	1.75	6
	8:10131241:A:T	rs17151550	8	10131241	0.36	0.000553	0.64	rs4841315	<i>MSRA</i>	intronic	6.14	7
	8:10133574:A:G	rs17695316	8	10133574	0.31	2.33E-05	0.75	rs4841315	<i>MSRA</i>	intronic	NA	5
	8:10135193:C:T	rs2004679	8	10135193	0.32	1.13E-05	0.81	rs4841315	<i>MSRA</i>	intronic	1.89	NA
	8:10135403:A:G	rs71516564	8	10135403	0.31	9.97E-06	0.79	rs4841315	<i>MSRA</i>	intronic	0.56	6
	8:10135571:C:G	rs2004677	8	10135571	0.32	9.01E-06	0.81	rs4841315	<i>MSRA</i>	intronic	0.12	7
	8:10136710:C:G	rs11774051	8	10136710	0.32	8.31E-06	0.81	rs4841315	<i>MSRA</i>	intronic	0.61	6
	8:10137930:G:T	rs55965226	8	10137930	0.31	8.06E-06	0.79	rs4841315	<i>MSRA</i>	intronic	1.41	7
	8:10138534:G:T	rs13272537	8	10138534	0.31	6.99E-06	0.79	rs4841315	<i>MSRA</i>	intronic	4.23	7

2	8:10138555:C:G	rs13264133	8	10138555	0.31	6.61E-06	0.79	rs4841315	MSRA	intronic	2.45	6
	<b>8:10139470:C:G</b>	<b>rs11783281</b>	<b>8</b>	<b>10139470</b>	<b>0.31</b>	<b>6.24E-06</b>	<b>0.79</b>	<b>rs4841315</b>	<b>MSRA</b>	<b>intronic</b>	<b>19.05</b>	<b>7</b>
	8:10140790:G:T	rs34917779	8	10140790	0.31	6.23E-06	0.78	rs4841315	MSRA	intronic	3.60	6
	8:10140875:A:G	rs10102621	8	10140875	0.36	0.000301	0.68	rs4841315	MSRA	intronic	1.85	5
	8:10141227:C:T	rs10103875	8	10141227	0.36	0.000276	0.68	rs4841315	MSRA	intronic	5.72	6
	8:10142227:C:T	rs4841308	8	10142227	0.31	4.39E-06	0.81	rs4841315	MSRA	intronic	2.45	6
	8:10153460:C:T	rs77205736	8	10153460	0.29	2.74E-05	0.95	rs4841315	MSRA	intronic	4.43	6
	<b>8:10157202:A:G</b>	<b>rs7817142</b>	<b>8</b>	<b>10157202</b>	<b>0.29</b>	<b>1.69E-05</b>	<b>0.93</b>	<b>rs4841315</b>	<b>MSRA</b>	<b>intronic</b>	<b>12.07</b>	<b>6</b>
	8:10159818:C:T	rs13269741	8	10159818	0.29	1.77E-05	0.96	rs4841315	MSRA	intronic	0.05	5
	8:10162381:A:C	rs13257313	8	10162381	0.29	1.65E-05	0.96	rs4841315	MSRA	intronic	0.66	7
	8:10168583:C:T	rs11782293	8	10168583	0.32	2.52E-06	0.84	rs4841315	MSRA	intronic	6.61	5
	8:10171312:A:G	rs11249985	8	10171312	0.32	2.71E-06	0.84	rs4841315	MSRA	intronic	7.20	5
	8:10178511:A:T	rs6601436	8	10178511	0.29	2.01E-05	0.96	rs4841315	MSRA	intronic	5.55	6
	8:10178810:A:T	rs7838059	8	10178810	0.29	2.12E-05	0.96	rs4841315	MSRA	intronic	NA	5
	8:10179230:A:C	rs4840478	8	10179230	0.29	1.78E-05	0.96	rs4841315	MSRA	intronic	3.76	6
	8:10179667:A:C	rs6601438	8	10179667	0.29	1.46E-05	0.96	rs4841315	MSRA	intronic	0.55	7
	<b>8:10179684:A:T</b>	<b>rs4841315</b>	<b>8</b>	<b>10179684</b>	<b>0.29</b>	<b>7.10E-06</b>	<b>1.00</b>	<b>rs4841315</b>	<b>MSRA</b>	<b>intronic</b>	<b>4.02</b>	<b>6</b>
	8:10182144:C:T	rs11249990	8	10182144	0.32	6.17E-06	0.83	rs4841315	MSRA	intronic	1.30	6
	<b>8:10184094:G:T</b>	<b>rs11783091</b>	<b>8</b>	<b>10184094</b>	<b>0.32</b>	<b>1.20E-05</b>	<b>0.83</b>	<b>rs4841315</b>	<b>MSRA</b>	<b>intronic</b>	<b>16.99</b>	<b>5</b>
	<b>8:10192466:C:T</b>	<b>rs11781529</b>	<b>8</b>	<b>10192466</b>	<b>0.30</b>	<b>1.50E-06</b>	<b>0.86</b>	<b>rs56028519</b>	<b>MSRA</b>	<b>intronic</b>	<b>7.32</b>	<b>2b</b>
8:10192519:C:CT	rs36105340	8	10192519	0.30	2.26E-06	0.87	rs56028519	MSRA	intronic	6.77	NA	
8:10193583:C:G	rs55656427	8	10193583	0.28	1.98E-07	0.97	rs56028519	MSRA	intronic	0.13	5	
8:10194915:T:TC	rs145292201	8	10194915	0.28	2.85E-07	0.97	rs56028519	MSRA:RP11-212F11.1	ncRNA_intronic	1.18	NA	
8:10194917:C:G	rs144415113	8	10194917	0.28	2.93E-07	0.97	rs56028519	MSRA:RP11-212F11.1	ncRNA_intronic	1.72	7	
8:10196418:A:C	rs56141232	8	10196418	0.28	2.05E-07	0.96	rs56028519	MSRA	intronic	NA	7	
8:10197639:C:T	rs74699996	8	10197639	0.28	2.01E-07	0.98	rs56028519	MSRA	intronic	7.45	5	
8:10197800:C:G	rs10091197	8	10197800	0.35	0.000308	0.71	rs56028519	MSRA	intronic	3.15	7	
8:10197968:C:T	rs147818026	8	10197968	0.28	1.39E-07	0.98	rs56028519	MSRA	intronic	1.14	7	
8:10198468:G:T	rs6601441	8	10198468	0.35	0.000352	0.71	rs56028519	MSRA	intronic	0.95	5	
8:10198474:A:G	rs78821248	8	10198474	0.28	1.33E-07	0.98	rs56028519	MSRA	intronic	2.30	5	
3	<b>8:10198773:A:G</b>	<b>rs56028519</b>	<b>8</b>	<b>10198773</b>	<b>0.28</b>	<b>7.97E-08</b>	<b>1.00</b>	<b>rs56028519</b>	<b>MSRA</b>	<b>intronic</b>	<b>0.02</b>	<b>7</b>
	8:10200082:A:G	rs11777018	8	10200082	0.30	8.20E-07	0.88	rs56028519	MSRA	intronic	1.64	5
	<b>8:10200886:A:G</b>	<b>rs11249991</b>	<b>8</b>	<b>10200886</b>	<b>0.29</b>	<b>2.32E-07</b>	<b>0.95</b>	<b>rs56028519</b>	<b>MSRA</b>	<b>intronic</b>	<b>9.01</b>	<b>2b</b>
	8:10201114:G:T	rs10903325	8	10201114	0.28	2.23E-07	0.96	rs56028519	MSRA	intronic	6.31	4



	8:10201364:G:T	rs11778030	8	10201364	0.31	9.85E-07	0.86	rs56028519	<i>MSRA</i>	intronic	0.58	5
	8:10202015:C:T	rs11785954	8	10202015	0.30	9.81E-07	0.87	rs56028519	<i>MSRA</i>	intronic	0.57	7
	8:10203555:G:GT	rs35886914	8	10203555	0.31	9.56E-07	0.86	rs56028519	<i>MSRA</i>	intronic	6.50	NA
	8:10204387:C:T	rs4841325	8	10204387	0.31	1.33E-06	0.86	rs56028519	<i>MSRA</i>	intronic	3.05	7
	8:10204562:C:T	rs4841326	8	10204562	0.30	1.11E-06	0.87	rs56028519	<i>MSRA</i>	intronic	2.65	7
	8:10204628:A:G	rs4840479	8	10204628	0.30	1.13E-06	0.87	rs56028519	<i>MSRA</i>	intronic	3.11	7
	8:10206154:A:G	rs71516569	8	10206154	0.30	2.22E-06	0.87	rs56028519	<i>MSRA</i>	intronic	6.25	6
	8:10207289:A:G	rs6989061	8	10207289	0.27	2.15E-06	0.90	rs56028519	<i>MSRA</i>	intronic	0.26	5
	8:10274888:C:T	rs17767108	8	10274888	0.30	1.37E-05	0.63	rs56028519	<i>MSRA</i>	intronic	6.14	4
<b>FBXO46</b>	19:46234155:A:G	rs17878252	19	46234155	0.29	0.001999	0.67	rs11883351	<i>FBXO46</i>	UTR5	9.72	NA
	19:46244060:A:G	rs4802273	19	46244060	0.30	0.002009	0.74	rs11883351	<i>AC074212.3</i>	intronic	8.52	6
	19:46251768:A:G	rs4802274	19	46251768	0.32	0.001054	0.79	rs11883351	<i>AC074212.3</i>	intronic	0.41	7
	19:46267453:G:T	rs16980013	19	46267453	0.32	0.000907	0.80	rs11883351	<i>AC074212.3</i>	UTR3	3.01	4
	19:46286714:A:C	rs2070736	19	46286714	0.32	0.001095	0.80	rs11883351	<i>AC011530.4:D</i> <i>MWD</i>	UTR3	2.59	NA
	19:46291672:A:C	rs55681266	19	46291672	0.32	0.001191	0.80	rs11883351	<i>DMWD</i>	intronic	9.24	5
	19:46292023:C:CA	rs34190352	19	46292023	0.32	0.000873	0.80	rs11883351	<i>DMWD</i>	intronic	1.13	NA
	<b>19:46304400:A:G</b>	<b>rs11883351</b>	<b>19</b>	<b>46304400</b>	<b>0.36</b>	<b>8.75E-06</b>	<b>1.00</b>	<b>rs11883351</b>	<b><i>RSPH6A</i></b>	<b>intronic</b>	<b>6.94</b>	<b>5</b>
	19:46304585:G:T	rs12463359	19	46304585	0.41	0.000198	0.82	rs11883351	<i>RSPH6A</i>	intronic	6.75	5
	19:46306904:C:T	rs7257103	19	46306904	0.36	1.65E-05	1.00	rs11883351	<i>RSPH6A</i>	intronic	0.45	7
	19:46310895:A:C	rs56096557	19	46310895	0.36	1.36E-05	0.99	rs11883351	<i>RSPH6A</i>	intronic	2.05	7
	19:46311420:C:T	rs56309034	19	46311420	0.36	3.57E-05	0.99	rs11883351	<i>RSPH6A</i>	intronic	2.39	7
	19:46312077:A:G	rs12460541	19	46312077	0.36	3.23E-05	0.99	rs11883351	<i>RSPH6A</i>	intronic	1.05	7
	19:46312345:C:T	rs9797817	19	46312345	0.36	1.84E-05	0.99	rs11883351	<i>RSPH6A</i>	intronic	0.69	6
	<b>19:46313758:C:G</b>	<b>rs10402263</b>	<b>19</b>	<b>46313758</b>	<b>0.36</b>	<b>9.20E-06</b>	<b>0.99</b>	<b>rs11883351</b>	<b><i>RSPH6A</i></b>	<b>intronic</b>	<b>0.11</b>	<b>2a</b>
	19:46315809:A:G	rs10421891	19	46315809	0.37	1.56E-05	0.96	rs11883351	<i>RSPH6A</i>	intronic	2.61	4
<b>1</b>	19:46317193:C:T	rs4286201	19	46317193	0.33	0.000626	0.82	rs11883351	<i>RSPH6A</i>	intronic	0.03	5
	<b>19:46317593:G:T</b>	<b>rs4514788</b>	<b>19</b>	<b>46317593</b>	<b>0.33</b>	<b>0.000629</b>	<b>0.82</b>	<b>rs11883351</b>	<b><i>RSPH6A</i></b>	<b>intronic</b>	<b>3.01</b>	<b>3a</b>
	<b>19:46320780:C:T</b>	<b>rs10401439</b>	<b>19</b>	<b>46320780</b>	<b>0.33</b>	<b>0.000621</b>	<b>0.82</b>	<b>rs11883351</b>	<b><i>SYMPK</i></b>	<b>intronic</b>	<b>6.20</b>	<b>1f</b>
	19:46322391:A:G	rs56243424	19	46322391	0.33	0.000489	0.82	rs11883351	<i>SYMPK</i>	intronic	1.76	5
	19:46322585:C:T	rs4803857	19	46322585	0.33	0.000458	0.82	rs11883351	<i>SYMPK</i>	intronic	3.91	5
	19:46322830:C:T	rs4802279	19	46322830	0.41	0.000177	0.78	rs11883351	<i>SYMPK</i>	intronic	1.53	5
	19:46325618:C:T	rs56178951	19	46325618	0.33	0.000883	0.82	rs11883351	<i>SYMPK</i>	intronic	5.64	5
	19:46327933:C:T	rs10500292	19	46327933	0.41	0.000221	0.78	rs11883351	<i>SYMPK</i>	intronic	5.31	5
	19:46328179:C:T	rs4803861	19	46328179	0.33	0.000832	0.82	rs11883351	<i>SYMPK</i>	intronic	5.63	5

19:46334141:C:T	rs56276426	19	46334141	0.34	0.001014	0.77	rs11883351	<i>SYMPK:AC09230I.3</i>	ncRNA_intronic	1.91	7	
19:46335131:A:G	rs73047896	19	46335131	0.33	0.000699	0.83	rs11883351	<i>SYMPK</i>	intronic	0.93	7	
19:46338729:C:T	rs918490	19	46338729	0.33	0.001426	0.83	rs11883351	<i>SYMPK</i>	intronic	0.87	NA	
19:46339659:C:T	rs7246123	19	46339659	0.33	0.001884	0.82	rs11883351	<i>SYMPK</i>	intronic	1.44	6	
19:46342220:C:T	rs6509236	19	46342220	0.33	0.001895	0.82	rs11883351	<i>SYMPK</i>	intronic	1.90	7	
19:46346330:C:T	rs8106955	19	46346330	0.33	0.001041	0.83	rs11883351	<i>SYMPK</i>	intronic	0.79	5	
19:46349311:A:G	rs6509237	19	46349311	0.33	0.001293	0.82	rs11883351	<i>SYMPK</i>	intronic	0.76	7	
<b>19:46367206:C:T</b>	<b>rs10412574</b>	<b>19</b>	<b>46367206</b>	<b>0.33</b>	<b>0.001249</b>	<b>0.82</b>	<b>rs11883351</b>	<b><i>FOXA3</i></b>	<b>upstream</b>	<b>6.70</b>	<b>4</b>	
19:46224156:A:G	rs35732815	19	46224156	0.46	7.80E-07	0.99	rs4802272	<i>FBXO46</i>	intronic	3.26	4	
19:46225952:A:G	rs34388571	19	46225952	0.46	8.17E-07	0.99	rs4802272	<i>FBXO46</i>	intronic	1.40	5	
19:46227880:C:T	rs57947504	19	46227880	0.46	9.34E-07	0.99	rs4802272	<i>FBXO46</i>	intronic	3.25	7	
<b>19:46235950:A:G</b>	<b>rs4802272</b>	<b>19</b>	<b>46235950</b>	<b>0.46</b>	<b>3.17E-07</b>	<b>1.00</b>	<b>rs4802272</b>	<b><i>AC074212.3</i></b>	<b>upstream</b>	<b>0.34</b>	<b>7</b>	
19:46238555:C:T	rs2041975	19	46238555	0.47	1.35E-06	0.95	rs4802272	<i>AC074212.3</i>	intronic	3.03	7	
19:46241195:C:T	rs12610941	19	46241195	0.47	1.62E-06	0.95	rs4802272	<i>AC074212.3</i>	intronic	1.99	6	
19:46246704:C:T	rs10415988	19	46246704	0.46	1.99E-06	0.92	rs4802272	<i>AC074212.3</i>	intronic	3.89	4	
19:46247641:A:G	rs10422883	19	46247641	0.46	1.36E-06	0.92	rs4802272	<i>AC074212.3</i>	intronic	3.47	7	
19:46251362:A:G	rs12611358	19	46251362	0.47	1.17E-06	0.95	rs4802272	<i>AC074212.3</i>	intronic	1.19	7	
19:46251460:C:T	rs10401487	19	46251460	0.47	8.70E-07	0.95	rs4802272	<i>AC074212.3</i>	intronic	1.58	7	
19:46255075:A:G	rs10416076	19	46255075	0.47	1.11E-06	0.95	rs4802272	<i>AC074212.3</i>	intronic	1.62	7	
19:46255139:C:T	rs11083781	19	46255139	0.47	1.07E-06	0.95	rs4802272	<i>AC074212.3</i>	intronic	1.97	7	
19:46257358:A:C	rs10404730	19	46257358	0.47	5.11E-07	0.95	rs4802272	<i>AC074212.3</i>	intronic	0.56	7	
19:46258993:G:T	rs10419334	19	46258993	0.47	5.01E-07	0.95	rs4802272	<i>AC074212.3</i>	intronic	0.09	7	
19:46260245:A:G	rs7260651	19	46260245	0.47	1.31E-06	0.94	rs4802272	<i>AC074212.3</i>	intronic	0.56	5	
19:46260375:C:T	rs4802275	19	46260375	0.47	1.33E-06	0.94	rs4802272	<i>AC074212.3</i>	intronic	5.94	5	
19:46260748:C:T	rs4802276	19	46260748	0.47	5.98E-07	0.95	rs4802272	<i>AC074212.3</i>	intronic	6.41	7	
19:46261247:A:G	rs4802277	19	46261247	0.47	1.23E-06	0.94	rs4802272	<i>AC074212.3</i>	intronic	0.01	4	
19:46261762:A:G	rs2341096	19	46261762	0.47	1.17E-06	0.94	rs4802272	<i>AC074212.3</i>	intronic	2.66	7	
19:46261982:C:T	rs10401971	19	46261982	0.47	1.30E-06	0.94	rs4802272	<i>AC074212.3</i>	intronic	0.77	7	
<b>2</b>	19:46265029:C:T	rs8112282	19	46265029	0.47	1.35E-06	0.95	rs4802272	<i>AC074212.3</i>	exonic	11.16	5
19:46269076:A:G	rs2014576	19	46269076	0.45	1.35E-06	0.84	rs4802272	<i>AC074212.5:SI X5</i>	exonic	9.42	NA	
19:46271177:G:T	rs3745802	19	46271177	0.47	1.23E-06	0.94	rs4802272	<i>AC074212.5:SI X5:AC074212.3</i>	ncRNA_exonic	8.56	4	

19:46274171:A:C	rs635299	19	46274171	0.47	5.78E-07	0.94	rs4802272	<i>AC074212.6:D MPK</i>	ncRNA_intronic	2.54	NA
19:46274972:A:C	rs915915	19	46274972	0.47	7.14E-07	0.93	rs4802272	<i>AC074212.6:D MPK</i>	ncRNA_exonic	5.82	NA
19:46276056:A:C	rs16939	19	46276056	0.47	1.10E-06	0.94	rs4802272	<i>DMPK</i>	intronic	5.47	4
19:46277288:A:C	rs4803854	19	46277288	0.47	1.20E-06	0.94	rs4802272	<i>DMPK</i>	intronic	2.34	5
<b>19:46284334:G:T</b>	<b>rs672348</b>	<b>19</b>	<b>46284334</b>	<b>0.47</b>	<b>8.87E-07</b>	<b>0.94</b>	<b>rs4802272</b>	<b><i>DMPK:AC011 530.4</i></b>	<b>intronic</b>	<b>12.43</b>	<b>NA</b>
19:46284520:A:G	rs522769	19	46284520	0.47	8.57E-07	0.94	rs4802272	<i>DMPK:AC0115 30.4</i>	intronic	10.93	5
19:46287200:C:G	rs617988	19	46287200	0.47	9.29E-07	0.94	rs4802272	<i>AC011530.4:D MWD</i>	UTR3	6.87	5
19:46292259:A:G	rs7246377	19	46292259	0.47	3.76E-07	0.94	rs4802272	<i>DMWD</i>	intronic	NA	5
19:46294510:A:G	rs1865116	19	46294510	0.47	7.79E-07	0.94	rs4802272	<i>DMWD</i>	intronic	6.02	4
<b>19:46296230:A:T</b>	<b>rs62111759</b>	<b>19</b>	<b>46296230</b>	<b>0.47</b>	<b>3.58E-07</b>	<b>0.94</b>	<b>rs4802272</b>	<b><i>DMWD</i></b>	<b>upstream</b>	<b>12.93</b>	<b>4</b>
19:46301456:A:C	rs35226705	19	46301456	0.44	1.45E-06	0.63	rs4802272	<i>RSPH6A</i>	intronic	0.73	6

Note: Associated genomic loci were defined by SNPs in LD ( $r^2 > 0.6$ ) with the **independent significant SNPs (IndSigSNP)** in the sample-size weighted meta-analysis. \***IND**: independent significant block; †**MAF**: minor allele frequency; ‡**r2**: Linkage disequilibrium; §**CADD**: Combined Annotation Dependent Depletion score; ||**RDB**: Regulome DB score; Table sorted by gwas\_P and POS\_B37. independent significant SNPs were marked as bold red. Functioned SNPs identified by CADD score ( $> 12$ ) and RDB score ( $< 3b$ ) were marked as bold black.

**Supplementary Table II. MAGMA Gene-Set Analysis**

<b>Go terms</b>	<b>NGENES</b>	<b>BETA</b>	<b>BETA_</b> <b>STD</b>	<b>SE</b>	<b>P</b>
GO_bp:go_cardiac_ventricle_formation	10	1.454	0.033	0.321	3.09E-06
GO_bp:go_his_purkinje_system_development	5	1.935	0.031	0.429	3.28E-06
GO_bp:go_cardiac_chamber_formation	12	1.094	0.027	0.255	8.94E-06
GO_cc:go_transcription_factor_complex	343	0.183	0.024	0.047	5.04E-05
GO_bp:go_mammary_gland_branching_involved_in_pregnancy	5	1.477	0.024	0.395	9.35E-05
GO_bp:go_cardiac_right_ventricle_morphogenesis	19	0.772	0.024	0.209	1.11E-04
GO_bp:go_cardioblast_differentiation	19	0.604	0.019	0.165	1.24E-04
GO_bp:go_apoptotic_process_involved_in_heart_morphogenesis	5	1.290	0.021	0.362	1.81E-04
GO_bp:go_atrial_septum_morphogenesis	16	0.656	0.019	0.192	3.08E-04
GO_bp:go_cardiac_atrium_development	34	0.477	0.020	0.139	3.12E-04
GO_cc:go_ciliary_rootlet	10	0.966	0.022	0.288	4.05E-04
GO_bp:go_paracrine_signaling	7	1.145	0.022	0.346	4.63E-04
GO_bp:go_response_to_transforming_growth_factor_beta	235	0.181	0.020	0.055	4.91E-04
GO_bp:go_positive_regulation_of_cardiocyte_differentiation	28	0.473	0.018	0.147	6.25E-04
GO_bp:go_negative_regulation_of_phospholipid_biosynthetic_process	4	1.471	0.021	0.456	6.28E-04
GO_bp:go_heart_development	530	0.121	0.020	0.038	6.83E-04
GO_bp:go_ventricular_cardiac_muscle_tissue_development	54	0.393	0.021	0.123	6.98E-04
GO_cc:go_nuclear_transcription_factor_complex	189	0.201	0.020	0.063	7.08E-04
GO_bp:go_cell_proliferation_involved_in_heart_morphogenesis	18	0.603	0.018	0.191	8.16E-04
GO_bp:go_regulation_of_secondary_heart_field_cardioblast_proliferation	10	0.842	0.019	0.269	8.64E-04
GO_cc:go_sarcoplasmic_reticulum_lumen	8	0.990	0.020	0.318	9.37E-04
GO_bp:go_atrial_septum_development	20	0.555	0.018	0.181	1.06E-03
GO_bp:go_positive_regulation_of_cardiac_vascular_smooth_muscle_cell_differentiation	2	1.253	0.013	0.409	1.10E-03
GO_bp:go_positive_regulation_of_cardioblast_differentiation	6	0.832	0.015	0.275	1.27E-03
GO_bp:go_positive_regulation_of_stem_cell_differentiation	20	0.518	0.017	0.172	1.30E-03
GO_bp:go_amino_sugar_catabolic_process	8	0.935	0.019	0.312	1.37E-03
GO_mf:go_inositol_trisphosphate_phosphatase_activity	6	1.239	0.022	0.414	1.39E-03
GO_bp:go_regulation_of_lung_blood_pressure	4	1.084	0.016	0.362	1.39E-03
GO_cc:go_unconventional_myosin_complex	10	0.809	0.018	0.271	1.40E-03
GO_bp:go_stress_granule_disassembly	5	1.363	0.022	0.457	1.44E-03
GO_cc:go_radial_spoke	6	1.339	0.024	0.449	1.44E-03
GO_bp:go_transmembrane_receptor_protein_serine_threonine_kinase_signaling_pathway	318	0.141	0.018	0.048	1.54E-03
GO_bp:go_positive_regulation_of_phospholipase_a2_activity	6	1.503	0.027	0.509	1.59E-03
GO_bp:go_amyloid_beta_clearance	30	0.444	0.018	0.151	1.63E-03

GO_bp:go_regulation_of_platelet_derived_growth_factor_receptor_beta_signaling_pathway	8	0.804	0.016	0.274	1.65E-03
GO_bp:go_cell_differentiation_involved_in_kidney_development	50	0.342	0.017	0.118	1.93E-03
GO_bp:go_activin_receptor_signaling_pathway	40	0.412	0.019	0.143	2.01E-03
GO_bp:go_regulation_of_platelet_derived_growth_factor_receptor_signaling_pathway	23	0.459	0.016	0.160	2.11E-03
GO_bp:go_mononuclear_cell_differentiation	34	0.445	0.019	0.156	2.22E-03
GO_mf:go_transcription_factor_binding	614	0.099	0.017	0.035	2.28E-03
GO_bp:go_ascending_aorta_development	5	1.116	0.018	0.398	2.51E-03
GO_bp:go_negative_regulation_of_platelet_derived_growth_factor_receptor_signaling_pathway	13	0.532	0.014	0.190	2.53E-03
GO_mf:go_activin_activated_receptor_activity	7	0.946	0.018	0.338	2.55E-03
GO_bp:go_sarcomere_organization	47	0.345	0.017	0.124	2.62E-03
GO_mf:go_at_dna_binding	10	0.976	0.022	0.350	2.64E-03
GO_bp:go_vitamin_d3_metabolic_process	5	0.975	0.016	0.350	2.65E-03
GO_bp:go_regulation_of_skeletal_muscle_contraction_by_calcium_ion_signaling	5	1.192	0.019	0.431	2.85E-03
GO_bp:go_pharyngeal_system_development	26	0.479	0.018	0.174	2.88E-03
GO_bp:go_negative_regulation_of_blood_vessel_endothelial_cell_migration	30	0.440	0.017	0.159	2.89E-03
GO_bp:go_cell_differentiation_involved_in_metanephros_development	25	0.440	0.016	0.160	3.02E-03
GO_bp:go_regulation_of_cardiac_vascular_smooth_muscle_cell_differentiation	3	1.037	0.013	0.379	3.14E-03
GO_bp:go_cardiac_ventricle_morphogenesis	71	0.295	0.018	0.108	3.15E-03
GO_bp:go_positive_regulation_of_muscle_tissue_development	68	0.277	0.017	0.102	3.16E-03
GO_bp:go_positive_regulation_of_phosphatidylinositol_3_kinase_signaling	84	0.240	0.016	0.088	3.23E-03
GO_bp:go_fibroblast_apoptotic_process	20	0.521	0.017	0.191	3.24E-03
GO_bp:go_middle_ear_morphogenesis	20	0.457	0.015	0.169	3.40E-03
GO_bp:go_regulation_of_cardioblast_differentiation	8	0.650	0.013	0.240	3.42E-03
GO_bp:go_regulation_of_phenotypic_switching	7	0.761	0.015	0.282	3.45E-03
GO_bp:go_phenotypic_switching	7	0.761	0.015	0.282	3.45E-03
GO_bp:go_positive_regulation_of_biosynthetic_process	1858	0.057	0.017	0.021	3.49E-03
GO_bp:go_pigment_granule_organization	24	0.508	0.018	0.188	3.50E-03
GO_bp:go_cardiac_muscle_cell_myoblast_differentiation	11	0.606	0.015	0.225	3.58E-03
GO_bp:go_positive_regulation_of_blood_circulation	64	0.292	0.017	0.109	3.62E-03
GO_bp:go_negative_regulation_of_macrophage_cytokine_production	5	0.753	0.012	0.280	3.63E-03
GO_bp:go_atrioventricular_valve_development	24	0.467	0.017	0.175	3.80E-03
GO_bp:go_branch_elongation_of_an_epithelium	21	0.586	0.019	0.220	3.86E-03
GO_mf:go_ma_polymerase_ii_transcription_factor_binding	50	0.317	0.016	0.119	3.87E-03
GO_bp:go_zinc_ion_transmembrane_transport	22	0.580	0.020	0.219	3.99E-03
GO_mf:go_inositol_polyphosphate_5_phosphatase_activity	5	1.212	0.020	0.458	4.07E-03
GO_bp:go_positive_regulation_of_cardiac_muscle_tissue_development	44	0.326	0.016	0.123	4.07E-03
GO_bp:go_pharyngeal_arch_artery_morphogenesis	8	0.733	0.015	0.277	4.10E-03
GO_bp:go_muscle_tissue_development	373	0.119	0.016	0.045	4.10E-03

GO_bp:go_platelet_derived_growth_factor_receptor_signaling_pathway	55	0.277	0.015	0.105	4.11E-03
GO_mf:go_peroxisome_targeting_sequence_binding	5	0.775	0.013	0.294	4.15E-03
GO_bp:go_negative_regulation_of_amyloid_beta_clearance	5	0.844	0.014	0.320	4.16E-03
GO_bp:go_cardioblast_proliferation	11	0.656	0.016	0.249	4.17E-03
GO_bp:go_ductus_arteriosus_closure	5	0.853	0.014	0.324	4.25E-03
GO_cc:go_u7_snmp	7	0.976	0.019	0.373	4.48E-03
GO_cc:go_ma_polymerase_ii_transcription_factor_complex	152	0.182	0.016	0.070	4.57E-03
GO_cc:go_extrinsic_component_of_mitochondrial_inner_membrane	13	0.663	0.017	0.255	4.70E-03
GO_bp:go_regulation_of_phosphatidylinositol_3_kinase_signaling	117	0.199	0.015	0.077	4.81E-03
GO_cc:go_i_band	129	0.190	0.016	0.074	4.86E-03
GO_bp:go_negative_regulation_of_response_to_wounding	84	0.238	0.016	0.093	5.04E-03
GO_bp:go_epithelial_cell_differentiation_involved_in_kidney_development	41	0.334	0.015	0.130	5.07E-03
GO_bp:go_cardiac_muscle_tissue_development	203	0.151	0.015	0.059	5.10E-03
GO_bp:go_regulation_of_dna_binding	120	0.199	0.016	0.078	5.17E-03
GO_bp:go_regulation_of_cell_chemotaxis_to_fibroblast_growth_factor	6	0.900	0.016	0.352	5.24E-03
GO_bp:go_positive_regulation_of_ma_biosynthetic_process	1518	0.058	0.016	0.023	5.66E-03
GO_bp:go_regulation_of_the_force_of_heart_contraction	27	0.457	0.017	0.181	5.68E-03
GO_bp:go_negative_regulation_of_vascular_associated_smooth_muscle_cell_migration	6	0.716	0.013	0.287	6.30E-03
GO_cc:go_platelet_alpha_granule	81	0.249	0.016	0.100	6.54E-03
GO_mf:go_transcription_coregulator_activity	528	0.092	0.015	0.037	6.63E-03
GO_mf:go_smad_binding	76	0.231	0.015	0.093	6.66E-03
GO_cc:go_u4_snmp	10	0.690	0.016	0.279	6.69E-03
GO_mf:go_nitric_oxide_synthase_regulator_activity	9	0.626	0.014	0.253	6.71E-03
GO_bp:go_regulation_of_cardiocyte_differentiation	47	0.284	0.014	0.115	6.75E-03
GO_bp:go_branch_elongation_involved_in_ureteric_bud_branching	5	1.082	0.017	0.439	6.92E-03
GO_cc:go_clathrin_coated_endocytic_vesicle	59	0.276	0.015	0.113	7.15E-03
GO_bp:go_post_embryonic_animal_organ_development	15	0.578	0.016	0.236	7.21E-03
GO_bp:go_regulation_of_cell_communication_by_electrical_coupling	12	0.584	0.015	0.239	7.31E-03
GO_bp:go_cardiocyte_differentiation	140	0.166	0.014	0.068	7.35E-03
GO_bp:go_positive_regulation_of_extracellular_matrix_assembly	5	0.956	0.015	0.392	7.37E-03
GO_bp:go_dna_templated_transcription_initiation	233	0.140	0.015	0.057	7.37E-03
GO_bp:go_glycerol_ether_biosynthetic_process	6	0.760	0.013	0.312	7.42E-03
GO_bp:go_transforming_growth_factor_beta_receptor_signaling_pathway	179	0.152	0.015	0.062	7.51E-03
GO_bp:go_negative_regulation_of_dna_binding	50	0.298	0.015	0.123	7.62E-03
GO_cc:go_extrinsic_component_of_external_side_of_plasma_membrane	8	0.588	0.012	0.243	7.77E-03
GO_bp:go_regulation_of_peptidyl_cysteine_s_nitrosylation	7	0.872	0.017	0.361	7.79E-03
GO_bp:go_circulatory_system_development	1004	0.067	0.015	0.028	7.86E-03
GO_mf:go_succinate_transmembrane_transporter_activity	7	0.842	0.016	0.349	7.87E-03

GO_bp:go_succinate_transport	7	0.842	0.016	0.349	7.87E-03
GO_bp:go_regulation_of_glutamine_family_amino_acid_metabolic_process	6	0.787	0.014	0.326	7.95E-03
GO_bp:go_positive_regulation_of_inflammatory_response_to_antigenic_stimulus	10	0.648	0.015	0.269	8.08E-03
GO_bp:go_regulation_of_myoblast_differentiation	52	0.280	0.015	0.116	8.11E-03
GO_bp:go_regulation_of_phospholipase_a2_activity	13	0.743	0.019	0.310	8.28E-03
GO_bp:go_negative_regulation_of_response_to_interferon_gamma	7	0.833	0.016	0.348	8.31E-03
GO_cc:go_clathrin_vesicle_coat	28	0.365	0.014	0.153	8.58E-03
GO_bp:go_positive_regulation_of_heart_contraction	34	0.330	0.014	0.139	8.74E-03
GO_bp:go_response_to_macrophage_colony_stimulating_factor	12	0.666	0.017	0.281	8.90E-03
GO_bp:go_regulation_of_vascular_smooth_muscle_cell_dedifferentiation	2	1.433	0.015	0.605	8.90E-03
GO_bp:go_positive_regulation_of_developmental_pigmentation	9	0.705	0.015	0.297	8.92E-03
GO_cc:go_bloc_1_complex	16	0.490	0.014	0.208	9.15E-03
GO_mf:go_phosphorus_oxygen_lyase_activity	21	0.427	0.014	0.181	9.26E-03
GO_bp:go_regulation_of_muscle_organ_development	132	0.175	0.014	0.074	9.34E-03
GO_bp:go_positive_regulation_of_astrocyte_differentiation	16	0.517	0.015	0.220	9.34E-03
GO_bp:go_negative_regulation_of_interleukin_6_secretion	9	0.599	0.013	0.255	9.48E-03
GO_bp:go_cardiac_muscle_tissue_morphogenesis	68	0.249	0.015	0.106	9.57E-03
GO_bp:go_regulation_of_skeletal_muscle_contraction_by_regulation_of_release_of_sequestered_calcium_ion	4	1.024	0.015	0.437	9.60E-03
GO_bp:go_heart_morphogenesis	246	0.128	0.014	0.055	9.69E-03
GO_bp:go_primary_alcohol_metabolic_process	62	0.261	0.015	0.112	9.72E-03
GO_bp:go_blood_vessel_remodeling	37	0.358	0.016	0.154	9.87E-03
GO_bp:go_endodermal_cell_fate_specification	8	0.939	0.019	0.403	9.91E-03
GO_bp:go_venous_blood_vessel_development	15	0.514	0.014	0.221	9.91E-03

Note: MAGMA gene-set analysis is performed for GO terms obtained from MsigDB. The table displays significant gene sets with P-value < 0.01. MAGMA gene-set analyses uses the full distribution of SNP p-values.