

APPENDIX

Cost-effectiveness of public health strategies for COVID-19 epidemic control in South Africa

Krishna P. Reddy, Fatma M. Shebl, Julia H. A. Foote, Guy Harling, Justine A. Scott,
Christopher Panella, Clare Flanagan, Emily P. Hyle, Anne M. Neilan, Amir M. Mohareb,
Linda-Gail Bekker, Richard J. Lessells, Andrea L. Ciaranello, Robin Wood, Elena Losina,
Kenneth A. Freedberg, Pooyan Kazemian, Mark J. Siedner

Contents

S1. Methods: Additional Information	2
Appendix References	8
Table S1	10
Table S2	11
Table S3	12
Table S4	13
Table S5	14
Table S6	15
Table S7	16
Table S8	17
Table S9	18
Table S10	19
Figure S1	20
Figure S2	24
Figure S3	25
Figure S4	26
Figure S5	27

METHODS: ADDITIONAL INFORMATION

S1.1. Model Structure and Analytic Overview

Overview

The Clinical and Economic Analysis of COVID Interventions (CEACOV) model consists of several modules that together determine individual health/disease trajectories and epidemic growth. These modules include natural history of disease, transmission, interventions including testing, and resource utilization.

There is much debate around appropriate cost-effectiveness thresholds, especially in low and middle-income countries. In this analysis, we applied an opportunity cost-based threshold for South Africa as reported by Woods et al. To be conservative, we applied the low end of their reported range (\$1,175) and converted it from 2013 United States dollars (USD) to 2019 USD, yielding a threshold of \$1,290 per year-of-life saved.^{1,2}

Health States

CEACOV simulates individuals transitioning between the states of susceptibility to severe acute respiratory syndrome coronavirus 2 (SARS-CoV-2), infection with SARS-CoV-2 and COVID-19 disease, recovery from COVID-19, and death. Susceptible individuals face a daily probability of exposure. After being infected with SARS-CoV-2, individuals may progress through the following health states (Figure S2):

- Pre-infectious latency
- Asymptomatic (or presymptomatic) infection
- Mild/moderate disease: symptomatic
- Severe disease: dyspnoea and/or hypoxemia ideally managed in a hospital with standard supplemental oxygen but not requiring intensive care unit (ICU)
- Critical disease: ideally managed in an ICU with high-flow supplemental oxygen, non-invasive positive pressure ventilation, or invasive mechanical ventilation
- Recuperation: only for those recuperating from critical disease and improving while remaining in the hospital or other health care facility
- Recovered

Individuals in the asymptomatic infection, mild/moderate disease, and severe disease states can transition directly to the recovered state. Individuals in the critical disease state can eventually die, or transition to the recuperation state and then to the recovered state. The recovered state is an absorbing state, and recovered individuals are assumed to have full immunity to SARS-CoV-2 over the model time horizon.

Natural History Paths

After being infected with SARS-CoV-2, a susceptible individual first transitions to the pre-infectious latency stage. Then, the individual has an age-dependent probability of progressing along one of four “paths,” culminating in either asymptomatic infection, mild/moderate disease, severe disease, or critical disease. Before reaching a more advanced disease state, individuals must first transition through intermediate states (e.g., those destined for severe disease must first pass through the asymptomatic/presymptomatic infection state and the mild/moderate disease state) (Figure S2).

Transmission

In CEACOV,

$$\text{Effective Transmission Rate (R}_{\text{eff}}) = \text{Nominal Transmission Rate (R}_{\text{nom}}) * \text{Transmission Multiplier}$$

The nominal transmission rate (R_{nom}) is a function of the average number of susceptible persons whom an infected individual contacts per day in a fully susceptible cohort multiplied by the probability of infecting the susceptible person per contact. This nominal transmission rate captures the ratio (not the magnitude) of daily infectivity stratified by disease states in an index epidemic. In other words, it captures the ratio of ‘force of transmission’ across different disease states. Infected individuals do not transmit while they are in the pre-infectious latency state or in the recovered state. Individuals in other infected states can transmit SARS-CoV-2 to susceptible individuals. The effective transmission rate (R_{eff}) changes over time as social interventions alter the number of contacts and infectivity per contact. Thus, the magnitude of the transmission rate is adjusted using the transmission multiplier

(see below). In a sense, the effective transmission rate (R_{eff}) in CEACOV is the effective reproductive number (R_e) divided by the average duration of infectivity.

Transmission multipliers are setting-specific, time-dependent adjusting factors. They roughly account for population density and interventions that can alter the number of contacts and infectivity in the setting being modelled.

We assumed that all susceptible persons have an equal probability of contacting infected individuals and acquiring the virus (i.e., homogenous mixing). As the epidemic grows, the number of susceptible persons declines. Thus, not all the daily contacts of infected individuals will be with susceptible persons. The daily infection rate for a susceptible person is equal to the sum of transmission rates from all infected persons across all infection states divided by the cohort size. This leads to an expected daily number of infections equal to the number of susceptible persons multiplied by the infection rate on that day.

Testing and Interventions

In this analysis, testing is performed on a nasopharyngeal specimen by polymerase chain reaction (PCR) assay. We assumed that test characteristics including sensitivity and specificity are independent of disease state – i.e., the sensitivity is the same for those in the mild/moderate disease state and those in the critical disease state. We assumed that, after providing a specimen for testing and while awaiting the test result, hospitalised individuals are isolated and non-hospitalised individuals are advised to self-isolate at home. In the model, test results are acted upon (an intervention is started) on the day that the result is delivered.

S1.2. Model Calibration

To calibrate our model output with the COVID-19 epidemic in South Africa, we adjusted the transmission multiplier to generate an effective reproduction number (R_e) of 1.5, matching that published by South Africa's National Institute for Communicable Diseases (NICD) based on empirical data collected in the country up to 19 May 2020.³ We also evaluated alternative epidemic growth scenarios with $R_e=1.2$ or $R_e=2.6$, reflecting low and high estimates from different periods and regions in the NICD report.

S1.3. Input Parameters

Natural History

We calculated age-stratified disease path probabilities. We used the proportions of people with COVID-19 who were: (a) asymptomatic,^{4,5} (b) admitted to the ICU,⁶ (c) hospitalised,⁶ and (d) undiagnosed,⁷ and the age-stratified proportions of different disease severity states.⁸

We used the following sources to derive the duration of time in each state: presymptomatic infectious time;^{8,9} duration of viral shedding based on PCR detectability (WHO-China CDC Report,⁸ Hu et al.,¹⁰ Zhou et al.¹¹); time to development of pneumonia (Wang et al.¹²); time to ICU admission (Zhou et al.¹¹); time spent in the ICU (Zhou et al.¹¹); and median time to death (Zhou et al.¹¹). We calculated the transition probabilities until recovery (defined as the end of viral shedding) and the transition probabilities between disease states including death. Subsequently, after determining the duration in each state, we estimated transition rates. We then calculated transition probabilities from the transition rates.

$$\text{Transition rate} = rt = \frac{1}{\text{duration of the transition}}$$

$$\text{Transition probability} = p = 1 - \exp(-rt).$$

Life Expectancy and Years-of-Life Lost

We estimated the years-of-life saved (YLS) from each averted death from COVID-19 in KwaZulu-Natal, South Africa. To do this, we calculated years-of-life lost (YLL), defined as the average number of years a person would have lived had s/he not died from COVID-19.¹³ The absolute number of YLL were:^{13,14}

$$YLL_{age\ i} = Deaths_{age\ i} * LE_{age\ i}$$

Where,

Deaths_{age i} is the number of deaths from COVID-19 in the age stratum,

LE_{age i} is the life expectancy in South Africa in the age stratum.

Therefore, age-stratified deaths and age-stratified life expectancy are needed. Because these data are not readily available, we estimated them from other sources, as follows.

1. Calculate age-stratified number of cases: We used the published South Africa NICD report of age- and sex-stratified COVID-19 cases¹⁵ to estimate the proportion of cases in each age stratum, and then calculated the number of cases in each age stratum, given the total number of cases generated by the model.

$$Cases_{age\ i} = \text{Number of cases generated by the model} * Proportion_{age\ i}$$

2. Calculate age-stratified number of cases and deaths: The reported COVID-19 deaths in South Africa are not age-stratified. Therefore, to estimate the number of deaths in each age stratum, we used the age-stratified case fatality ratio (CFR) from Massachusetts, USA,⁶ the age distribution of the population of KwaZulu-Natal,¹⁶ and the number of cases estimated from step 1 to estimate the number of deaths in each age stratum, given the total number of deaths generated by the model.

$$Deaths_{age\ i} = \frac{CFR_{age\ i} * Cases_{age\ i} * \text{Number of deaths generated by the model}}{\sum CFR_{age\ i} * Cases_{age\ i}}$$

3. Calculate life expectancy: Published South Africa life tables are stratified by sex. Our model analysis was not stratified by sex. Therefore, we generated a standard abridged life table, not stratified by sex.
 - I. To create a life table for South Africa, we used the following data:
 - a. All-cause mortality: World Health Organization disease burden and mortality¹⁷
 - b. Age- and sex-stratified population size: United Nations World Population Prospects 2019¹⁸

II. Using SAS software (Cary, North Carolina, USA), we generated a life table. From this, we estimated the average remaining lifetime or the expected life-years at any given age (the average years remaining to be lived by those surviving to that age).

4. Calculate the age-stratified absolute number of YLL, base case:

$$YLL_{age\ i} = Deaths_{age\ i} * LE_{age\ i}$$

5. Calculate the total absolute number of YLL, base case:

$$YLL_{base\ case} = \sum YLL_{age\ i}$$

6. Calculate the mean YLL:

$$Mean\ YLL = \frac{\sum YLL_{age\ i}}{\sum Deaths_{age\ i}}$$

$$Mean\ YLL = \frac{582789}{45100} = 12.92$$

7. Calculate the absolute number of YLL associated with different intervention strategies: We used the mean YLL to estimate intervention-specific YLL

$$YLL_{intervention\ j} = Mean\ YLL_{base\ case} * Deaths_{intervention\ j}$$

Transmission

Assuming that (a) R_0 is 2.6 for individuals with asymptomatic and mild/moderate disease, (b) R_0 is one-tenth of 2.6 for individuals with severe and critical disease,¹⁹ and (c) viral shedding times are 9.5, 12, 19, and 24 days for individuals with asymptomatic, mild/moderate, severe, and critical disease, respectively,^{8,10,11} we estimated the nominal transmission rate as described above in S1.1.

Resource Utilization and Costs

We applied costs from the health sector perspective. We adjusted costs to 2019 United States dollars, using South Africa-specific inflation and exchange rates.^{11,12} We obtained costs of clinical care from Mahomed et al. and Netcare Hospitals.^{20,21} We obtained the cost of PCR testing, including personnel and supplies, from the Africa Health Research Institute (personal communication).

We derived the number of ICU and non-ICU hospital beds available in KwaZulu-Natal (KZN) based on data reported by the South Africa Department of Health:

$$(a)\ ICU\ hospital\ beds_{KZN} = \frac{Total\ (non - ICU\ and\ ICU)\ hospital\ beds_{KZN}}{Total\ (non - ICU\ and\ ICU)\ hospital\ beds_{South\ Africa}} \times ICU\ hospital\ beds_{South\ Africa}$$

$$(b)\ non - ICU\ hospital\ beds_{KZN} = \frac{Total\ (non - ICU\ and\ ICU)\ hospital\ beds_{KZN}}{Total\ (non - ICU\ and\ ICU)\ hospital\ beds_{South\ Africa}} \times non - ICU\ hospital\ beds_{South\ Africa}$$

We derived the costs of additional intervention strategies from data supplied by the Africa Health Research Institute. The daily per-person costs of isolation and quarantine centre beds were based on the cost of a 500-person tent and personnel requirements.

To calculate the per-person cost of contact tracing and mass symptom screening, including personnel, supplies, and transportation, we assumed that community health workers could visit 30 households per day, with 5 individuals per house, on 20 days per month:

$$\text{Per person contact tracing cost} = \frac{\text{Monthly cost of contact tracing}}{\text{Days per month} \times \text{Households per day} \times \text{Individuals per house}}$$

(the same per-person cost was applied for mass symptom screening)

We assumed that the per-unit costs of resources would be the same regardless of the total quantity. For example, per-test cost of performing a PCR assay was the same regardless of the number of PCR assays performed, and per-person daily cost of a stay at an isolation centre was the same regardless of the number of individuals housed at an isolation centre.

Mass Symptom Screening Efficacy

To calculate the increase in the cumulative probability of undergoing testing from mass symptom screening (MS) relative to contact tracing (CT), we assumed that MS would screen the population of 11 million twice per year. We assumed that individuals with mild/moderate symptoms are symptomatic for 10 days, on average:

$$\text{Increase in MS efficacy relative to CT} = \frac{\text{Average duration of mild/moderate symptoms} \times \text{screens per year}}{\text{Time (days)}}$$

$$\text{Increase in MS efficacy relative to CT} = \frac{10 \times 2}{360} = 5.6\%$$

Influenza-like Illness in Mass Symptom Screening

Based on a cross-sectional household survey conducted in KwaZulu-Natal by the Africa Health Research Institute, approximately 1% of individuals have symptoms of an influenza-like illness (ILI) (personal communication). To calculate the number of individuals with ILI who would be tested under MS each day:

$$\text{Individuals with ILI tested under MS, daily} = \frac{\text{Individuals screened under MS} \times \text{screens per year}}{\text{Time (days)}} \times \text{prevalence of ILI}$$

$$\text{Individuals with ILI tested under MS, daily} = \frac{11,000,000 \times 2}{360} \times 1\% = 611$$

APPENDIX REFERENCES

1. Woods B, Revill P, Sculpher M, Claxton K. Country-level cost-effectiveness thresholds: initial estimates and the need for further research. *Value Health*. 2016 Dec;19(8):929–35.
2. US Bureau of Labor Statistics. CPI Inflation Calculator [Internet]. 2019 [cited 2020 Jun 11]. Available from: <https://data.bls.gov/cgi-bin/cpicalc.pl>
3. National Institute for Communicable Diseases. The Initial and Daily COVID-19 Effective Reproductive Number (R) in South Africa [Internet]. 2020 [cited 2020 Jun 9]. Available from: <https://www.nicd.ac.za/wp-content/uploads/2020/05/The-Initial-and-Daily-COVID-19-Effective-Reproductive-Number-R-in-South-Africa-002.pdf>
4. Mizumoto K, Kagaya K, Zarebski A, Chowell G. Estimating the asymptomatic proportion of coronavirus disease 2019 (COVID-19) cases on board the Diamond Princess cruise ship, Yokohama, Japan, 2020. *Eurosurveillance* [Internet]. 2020 Mar 12 [cited 2020 Jun 10];25(10). Available from: <https://www.eurosurveillance.org/content/10.2807/1560-7917.ES.2020.25.10.2000180>
5. Tao Y, Cheng P, Chen W, Wan P, Chen Y, Yuan G, et al. High incidence of asymptomatic SARS-CoV-2 infection, Chongqing, China [Internet]. *Emergency Medicine*; 2020 Mar [cited 2020 Jun 10]. Available from: <http://medrxiv.org/lookup/doi/10.1101/2020.03.16.20037259>
6. Massachusetts Department of Health. COVID-19 Dashboard [Internet]. 2020 [cited 2020 Jun 10]. Available from: <https://www.mass.gov/doc/covid-19-dashboard-april-20-2020/download>
7. Rothwell J. Estimating COVID-19 Prevalence in Symptomatic Americans [Internet]. 2020 [cited 2020 Jun 10]. Available from: <https://news.gallup.com/opinion/gallup/306458/estimating-covid-prevalence-symptomatic-americans.aspx>
8. WHO-China Joint Mission on Coronavirus Diseases 2019 (COVID-19). Report of the WHO-China Joint Mission on Coronavirus Diseases 2019 (COVID-19) [Internet]. 2020 [cited 2020 May 27]. Available from: <https://www.who.int/docs/default-source/coronaviruse/who-china-joint-mission-on-covid-19-final-report.pdf>
9. He X, Lau EHY, Wu P, Deng X, Wang J, Hao X, et al. Temporal dynamics in viral shedding and transmissibility of COVID-19. *Nat Med*. 2020 May;26(5):672–5.
10. Hu Z, Song C, Xu C, Jin G, Chen Y, Xu X, et al. Clinical characteristics of 24 asymptomatic infections with COVID-19 screened among close contacts in Nanjing, China. *Sci China Life Sci*. 2020;63(5):706–11.
11. Zhou F, Yu T, Du R, Fan G, Liu Y, Liu Z, et al. Clinical course and risk factors for mortality of adult inpatients with COVID-19 in Wuhan, China: a retrospective cohort study. *Lancet*. 2020 Mar 28;395(10229):1054–62.
12. Wang D, Hu B, Hu C, Zhu F, Liu X, Zhang J, et al. Clinical characteristics of 138 hospitalized patients with 2019 novel coronavirus–infected pneumonia in Wuhan, China. *JAMA*. 2020 Mar 17;323(11):1061.
13. Gardner JW, Sanborn JS. Years of potential life lost (YPLL)--what does it measure? *Epidemiology*. 1990 Jul;1(4):322–9.
14. Martinez R, Soliz P, Caixeta R, Ordunez P. Reflection on modern methods: years of life lost due to premature mortality-a versatile and comprehensive measure for monitoring non-communicable disease mortality. *Int J Epidemiol*. 2019 01;48(4):1367–76.
15. National Institute for Communicable Diseases. COVID-19 Update [Internet]. 2020 [cited 2020 Jun 10]. Available from: <https://www.nicd.ac.za/covid-19-update-36/>

16. Statistics South Africa. Mid-year population estimates [Internet]. 2020 [cited 2020 Jun 10]. Available from: <http://www.statssa.gov.za/?s=mid-year+population+estimates&sitem=publications>
17. World Health Organization. Disease Burden and Mortality Estimates: Cause-Specific Mortality, 2000-2016 [Internet]. 2017 [cited 2020 Jun 10]. Available from: <https://www.nicd.ac.za/covid-19-update-36/>
18. United Nations. World Population Prospects, South Africa [Internet]. 2019 [cited 2020 Jun 10]. Available from: <https://population.un.org/wpp/Download/Standard/Population/>
19. Liu Y, Gayle AA, Wilder-Smith A, Rocklöv J. The reproductive number of COVID-19 is higher compared to SARS coronavirus. *J Travel Med.* 2020 13;27(2).
20. Mahomed S, Mahomed OH. Cost of intensive care services at a central hospital in South Africa. *S Afr Med J.* 2018 Dec 13;109(1):35.
21. Netcare Hospitals. Netcare Tariffs [Internet]. 2016 [cited 2020 Jun 10]. Available from: <https://www.netcarehospitals.co.za/>
22. National Department of Health, South Africa. COVID-19 Public Health Response [Internet]. 2020 [cited 2020 Jun 10]. Available from: <https://sacoronavirus.co.za/2020/04/11/covid-19-public-health-response/>
23. Craig J, Kalanxhi E, Hauck S. National estimates of critical care capacity in 54 African countries. [Internet]. *Public and Global Health*; 2020 Jun [cited 2020 Jun 22]. Available from: <http://medrxiv.org/lookup/doi/10.1101/2020.05.13.20100727>

Table S1. Sensitivity analysis: varying the costs of contact tracing and mass symptom screen strategies.

Cost	Strategy	Total life-years lost, n	Total health care costs over 360 days, 2019 USD	ICER, 2019 USD/YLS
Base case	<i>HT</i>	487,290	668,000,000	--
	<i>HT+CT</i>	320,760	704,000,000	220
	<i>HT+CT+IC+MS</i>	116,220	776,000,000	350
	<i>HT+CT+IC</i>	152,760	798,000,000	DOMINATED
	<i>HT+CT+IC+MS+QC</i>	24,340	1,511,000,000	8,000
	<i>HT+CT+IC+QC</i>	32,070	1,569,000,000	DOMINATED
Contact tracing and mass symptom screening cost changed to 50% of base case value	<i>HT</i>	487,290	668,000,000	--
	<i>HT+CT</i>	320,760	696,000,000	170
	<i>HT+CT+IC+MS</i>	116,220	770,000,000	360
	<i>HT+CT+IC</i>	152,760	792,000,000	DOMINATED
	<i>HT+CT+IC+MS+QC</i>	24,340	1,507,000,000	8,020
	<i>HT+CT+IC+QC</i>	32,070	1,564,000,000	DOMINATED
Contact tracing and mass symptom screening cost changed to 200% of base case value	<i>HT</i>	487,290	668,000,000	--
	<i>HT+CT</i>	320,760	721,000,000	320
	<i>HT+CT+IC+MS</i>	116,220	788,000,000	330
	<i>HT+CT+IC</i>	152,760	811,000,000	DOMINATED
	<i>HT+CT+IC+MS+QC</i>	24,340	1,519,000,000	7,960
	<i>HT+CT+IC+QC</i>	32,070	1,578,000,000	DOMINATED

USD: United States dollars. ICER: incremental cost-effectiveness ratio. YLS: year-of-life saved. HT: healthcare testing. CT: contact tracing within households. IC: isolation centre. MS: mass symptom screen. QC: quarantine centre. DOMINATED: results in more life-years lost and higher costs than an alternative strategy.

The ICER is the difference between two strategies in costs divided by the difference in life-years.

Strategies are listed in order of ascending costs, per convention of cost-effectiveness analysis.

In the base case, contact tracing and mass symptom screening cost \$3/person.

Table S2. Sensitivity analysis: varying the cost of hospitalisation.

Cost	Strategy	Total life-years lost, n	Total health care costs over 360 days, 2019 USD	ICER, 2019 USD/YLS
Base case	<i>HT</i>	487,290	668,000,000	--
	<i>HT+CT</i>	320,760	704,000,000	220
	<i>HT+CT+IC+MS</i>	116,220	776,000,000	350
	<i>HT+CT+IC</i>	152,760	798,000,000	DOMINATED
	<i>HT+CT+IC+MS+QC</i>	24,340	1,511,000,000	8,000
	<i>HT+CT+IC+QC</i>	32,070	1,569,000,000	DOMINATED
Hospital (non-ICU) bed daily cost changed to 50% of base case value	<i>HT</i>	487,290	617,000,000	--
	<i>HT+CT</i>	320,760	659,000,000	260
	<i>HT+CT+IC+MS</i>	116,220	749,000,000	440
	<i>HT+CT+IC</i>	152,760	768,000,000	DOMINATED
	<i>HT+CT+IC+MS+QC</i>	24,340	1,502,000,000	8,200
	<i>HT+CT+IC+QC</i>	32,070	1,557,000,000	DOMINATED
Hospital (non-ICU) bed daily cost changed to 200% of base case value	<i>HT</i>	487,290	770,000,000	--
	<i>HT+CT</i>	320,760	794,000,000	150
	<i>HT+CT+IC+MS</i>	116,220	830,000,000	170
	<i>HT+CT+IC</i>	152,760	859,000,000	DOMINATED
	<i>HT+CT+IC+MS+QC</i>	24,340	1,528,000,000	7,600
	<i>HT+CT+IC+QC</i>	32,070	1,593,000,000	DOMINATED
ICU bed daily cost changed to 50% of base case value	<i>HT</i>	487,290	476,000,000	--
	<i>HT+CT</i>	320,760	493,000,000	100
	<i>HT+CT+IC+MS</i>	116,220	571,000,000	380
	<i>HT+CT+IC</i>	152,760	594,000,000	DOMINATED
	<i>HT+CT+IC+MS+QC</i>	24,340	1,420,000,000	9,240
	<i>HT+CT+IC+QC</i>	32,070	1,453,000,000	DOMINATED
ICU bed daily cost changed to 200% of base case value	<i>HT</i>	487,290	1,051,000,000	--
	<i>HT+CT</i>	320,760	1,128,000,000	dominated
	<i>HT+CT+IC+MS</i>	116,220	1,186,000,000	360
	<i>HT+CT+IC</i>	152,760	1,208,000,000	DOMINATED
	<i>HT+CT+IC+MS+QC</i>	24,340	1,693,000,000	5,520
	<i>HT+CT+IC+QC</i>	32,070	1,800,000,000	DOMINATED

USD: United States dollars. ICER: incremental cost-effectiveness ratio. YLS: year-of-life saved. HT: healthcare testing. CT: contact tracing within households. IC: isolation centre. MS: mass symptom screen. QC: quarantine centre. dominated: results in higher ICER than an alternative strategy that results in fewer life-years lost. DOMINATED: results in more life-years lost and higher costs than an alternative strategy.

The ICER is the difference between two strategies in costs divided by the difference in life-years.

Strategies are listed in order of ascending costs, per convention of cost-effectiveness analysis.

In the base case, hospital beds cost \$165/person/day and ICU beds cost \$2,048/person/day.

Table S3. Sensitivity analysis: varying PCR testing parameters.

PCR testing parameter	Strategy	Total life-years lost, n	Total health care costs over 360 days, 2019 USD	ICER, 2019 USD/YLS
Base case	<i>HT</i>	487,290	668,000,000	--
	<i>HT+CT</i>	320,760	704,000,000	220
	<i>HT+CT+IC+MS</i>	116,220	776,000,000	350
	<i>HT+CT+IC</i>	152,760	798,000,000	DOMINATED
	<i>HT+CT+IC+MS+QC</i>	24,340	1,511,000,000	8,000
	<i>HT+CT+IC+QC</i>	32,070	1,569,000,000	DOMINATED
PCR sensitivity changed to 50%	<i>HT</i>	495,790	672,000,000	--
	<i>HT+CT</i>	343,390	694,000,000	150
	<i>HT+CT+IC+MS</i>	134,380	777,000,000	420
	<i>HT+CT+IC</i>	166,310	801,000,000	DOMINATED
	<i>HT+CT+IC+MS+QC</i>	25,350	1,543,000,000	6,810
	<i>HT+CT+IC+QC</i>	33,910	1,613,000,000	DOMINATED
PCR sensitivity changed to 90%	<i>HT</i>	482,890	662,000,000	--
	<i>HT+CT</i>	312,180	694,000,000	190
	<i>HT+CT+IC+MS</i>	79,460	762,000,000	290
	<i>HT+CT+IC</i>	120,760	798,000,000	DOMINATED
	<i>HT+CT+IC+MS+QC</i>	21,990	1,507,000,000	12,950
	<i>HT+CT+IC+QC</i>	30,040	1,561,000,000	DOMINATED
PCR result return time changed to 1 day	<i>HT</i>	451,020	626,000,000	--
	<i>HT+CT+IC+MS</i>	78,200	660,000,000	90
	<i>HT+CT</i>	255,470	673,000,000	DOMINATED
	<i>HT+CT+IC</i>	100,800	706,000,000	DOMINATED
	<i>HT+CT+IC+MS+QC</i>	16,560	1,452,000,000	12,850
	<i>HT+CT+IC+QC</i>	30,650	1,495,000,000	DOMINATED
PCR result return time changed to 7 days	<i>HT</i>	507,720	699,000,000	--
	<i>HT+CT</i>	343,350	733,000,000	210
	<i>HT+CT+IC+MS</i>	154,610	919,000,000	980
	<i>HT+CT+IC</i>	173,830	935,000,000	DOMINATED
	<i>HT+CT+IC+MS+QC</i>	20,010	1,547,000,000	4,670
	<i>HT+CT+IC+QC</i>	37,710	1,611,000,000	DOMINATED

USD: United States dollars. ICER: incremental cost-effectiveness ratio. YLS: year-of-life saved. PCR: polymerase chain reaction. HT: healthcare testing. CT: contact tracing within households. IC: isolation centre. MS: mass symptom screen. QC: quarantine centre. dominated: results in higher ICER than an alternative strategy that results in fewer life-years lost. DOMINATED: results in more life-years lost and higher costs than an alternative strategy.

The ICER is the difference between two strategies in costs divided by the difference in life-years.

Strategies are listed in order of ascending costs, per convention of cost-effectiveness analysis.

In the base case, the PCR test has a 70% sensitivity and a 5-day result return time.

Table S4. Sensitivity analysis: varying the cost of the PCR test.

Cost	Strategy	Total life-years lost, n	Total health care costs over 360 days, 2019 USD	ICER, 2019 USD/YLS
Base case	<i>HT</i>	487,290	668,000,000	--
	<i>HT+CT</i>	320,760	704,000,000	220
	<i>HT+CT+IC+MS</i>	116,220	776,000,000	350
	<i>HT+CT+IC</i>	152,760	798,000,000	DOMINATED
	<i>HT+CT+IC+MS+QC</i>	24,340	1,511,000,000	8,000
	<i>HT+CT+IC+QC</i>	32,070	1,569,000,000	DOMINATED
PCR test cost changed to 50% of base case value	<i>HT</i>	487,290	576,000,000	--
	<i>HT+CT</i>	320,760	617,000,000	250
	<i>HT+CT+IC+MS</i>	116,220	710,000,000	450
	<i>HT+CT+IC</i>	152,760	732,000,000	DOMINATED
	<i>HT+CT+IC+MS+QC</i>	24,340	1,465,000,000	8,210
	<i>HT+CT+IC+QC</i>	32,070	1,523,000,000	DOMINATED
PCR test cost changed to 200% of base case value	<i>HT</i>	487,290	851,000,000	--
	<i>HT+CT</i>	320,760	878,000,000	dominated
	<i>HT+CT+IC+MS</i>	116,220	896,000,000	120
	<i>HT+CT+IC</i>	152,760	932,000,000	DOMINATED
	<i>HT+CT+IC+MS+QC</i>	24,340	1,591,000,000	7,570
	<i>HT+CT+IC+QC</i>	32,070	1,660,000,000	DOMINATED

USD: United States dollars. ICER: incremental cost-effectiveness ratio. YLS: year-of-life saved. PCR: polymerase chain reaction. HT: healthcare testing. CT: contact tracing within households. IC: isolation centre. MS: mass symptom screen. QC: quarantine centre. dominated: results in higher ICER than an alternative strategy that results in fewer life-years lost. DOMINATED: results in more life-years lost and higher costs than an alternative strategy.

The ICER is the difference between two strategies in costs divided by the difference in life-years.

Strategies are listed in order of ascending costs, per convention of cost-effectiveness analysis.

In the base case, the PCR test cost \$27/test.

Table S5. Sensitivity analysis: varying the availability of isolation centre and quarantine centre beds.

Number of isolation and quarantine centre beds	Strategy	Peak daily resource use, n		Total life-years lost, n	Total health care costs over 360 days, 2019 USD	ICER, 2019 USD/YLS
		IC beds	QC beds			
Base case	<i>HT</i>	--	--	487,290	668,000,000	--
	<i>HT+CT</i>	--	--	320,760	704,000,000	220
	<i>HT+CT+IC+MS</i>	19,260	--	116,220	776,000,000	350
	<i>HT+CT+IC</i>	21,860	--	152,760	798,000,000	DOMINATED
	<i>HT+CT+IC+MS+QC</i>	11,450	102,710	24,340	1,511,000,000	8,000
	<i>HT+CT+IC+QC</i>	15,310	103,150	32,070	1,569,000,000	DOMINATED
Number of isolation centre beds and quarantine centre beds reduced to 30,000 each	<i>HT</i>	--	--	487,290	668,000,000	--
	<i>HT+CT</i>	--	--	320,760	704,000,000	220
	<i>HT+CT+IC+MS</i>	19,260	--	116,220	776,000,000	350
	<i>HT+CT+IC</i>	21,860	--	152,760	798,000,000	DOMINATED
	<i>HT+CT+IC+MS+QC</i>	11,450	30,000	114,440	1,306,000,000	298,610
	<i>HT+CT+IC+QC</i>	15,310	30,000	150,980	1,405,000,000	DOMINATED

USD: United States dollars. ICER: incremental cost-effectiveness ratio. YLS: year-of-life saved. HT: healthcare testing. CT: contact tracing within households. IC: isolation centre. MS: mass symptom screen. QC: quarantine centre. dominated: results in higher ICER than an alternative strategy that results in fewer life-years lost. DOMINATED: results in more life-years lost and higher costs than an alternative strategy.

The ICER is the difference between two strategies in discounted costs divided by the difference in life-years.

Strategies are listed in order of ascending costs, per convention of cost-effectiveness analysis.

In the base case, there is no restriction on the availability of isolation centre beds and quarantine centre beds.

In the sensitivity analysis, we reduced the available number of isolation centre beds and quarantine centre beds to 30,000 per 11 million people.

Table S6. Sensitivity analysis: varying the availability of hospital beds and ICU beds.

Number of hospital and ICU beds	Strategy	Peak daily resource use, n		Total life-years lost, n	Total health care costs over 360 days, 2019 USD	ICER, 2019 USD/YLS
		Hospital (non-ICU) beds	ICU beds			
Base case	<i>HT</i>	5,610	744	487,290	668,000,000	--
	<i>HT+CT</i>	3,670	744	320,760	704,000,000	220
	<i>HT+CT+IC+MS</i>	1,620	744	116,220	776,000,000	350
	<i>HT+CT+IC</i>	2,020	744	152,760	798,000,000	DOMINATED
	<i>HT+CT+IC+MS+QC</i>	450	440	24,340	1,511,000,000	8,000
	<i>HT+CT+IC+QC</i>	680	545	32,070	1,569,000,000	DOMINATED
Number of hospital and ICU beds reduced*	<i>HT</i>	5,650	371	548,870	314,000,000	--
	<i>HT+CT</i>	3,680	371	389,370	341,000,000	170
	<i>HT+CT+IC+MS</i>	1,650	371	184,470	470,000,000	630
	<i>HT+CT+IC</i>	2,090	371	210,860	484,000,000	DOMINATED
	<i>HT+CT+IC+MS+QC</i>	550	371	26,250	1,415,000,000	5,970
	<i>HT+CT+IC+QC</i>	860	371	48,960	1,454,000,000	DOMINATED

ICU: intensive care unit. USD: United States dollars. ICER: incremental cost-effectiveness ratio. YLS: year-of-life saved. HT: healthcare testing. CT: contact tracing within households. IC: isolation centre. MS: mass symptom screen. QC: quarantine centre. dominated: results in higher ICER than an alternative strategy that results in fewer life-years lost. DOMINATED: results in more life-years lost and higher costs than an alternative strategy.

The ICER is the difference between two strategies in costs divided by the difference in life-years.

Strategies are listed in order of ascending costs, per convention of cost-effectiveness analysis.

In the base case, the numbers of available hospital (non-ICU) beds and ICU beds are 26,220 and 744 per 11 million people, respectively.

*We changed the available number of hospital (non-ICU) and ICU beds to match the reported median numbers across countries in sub-Saharan Africa: 22,275 and 371 per 11 million people, respectively.

Table S7. Sensitivity analysis: varying the effective reproductive number.

Effective reproduction number (R_e)	Strategy	Total life-years lost, n	Total health care costs over 360 days, 2019 USD	ICER, 2019 USD/YLS
1.2	<i>HT+CT+IC+MS</i>	7,100	190,000,000	--
	<i>HT+CT+IC</i>	14,190	238,000,000	DOMINATED
	<i>HT+CT</i>	55,480	502,000,000	DOMINATED
	<i>HT</i>	268,900	625,000,000	DOMINATED
	<i>HT+CT+IC+MS+QC</i>	3,260	1,318,000,000	294,320
	<i>HT+CT+IC+QC</i>	4,820	1,318,000,000	DOMINATED
1.5	<i>HT</i>	487,290	668,000,000	--
	<i>HT+CT</i>	320,760	704,000,000	220
	<i>HT+CT+IC+MS</i>	116,220	776,000,000	350
	<i>HT+CT+IC</i>	152,760	798,000,000	DOMINATED
	<i>HT+CT+IC+MS+QC</i>	24,340	1,511,000,000	8,000
	<i>HT+CT+IC+QC</i>	32,070	1,569,000,000	DOMINATED
2.6	<i>HT</i>	774,630	637,000,000	--
	<i>HT+CT</i>	730,360	681,000,000	1,000
	<i>HT+CT+IC</i>	649,620	1,213,000,000	dominated
	<i>HT+CT+IC+MS</i>	645,500	1,259,000,000	6,810
	<i>HT+CT+IC+QC</i>	593,140	1,990,000,000	dominated
	<i>HT+CT+IC+MS+QC</i>	575,690	2,037,000,000	11,150

USD: United States dollars. ICER: incremental cost-effectiveness ratio. YLS: year-of-life saved. HT: healthcare testing. CT: contact tracing within households. IC: isolation centre. MS: mass symptom screen. QC: quarantine centre. dominated: results in higher ICER than an alternative strategy that results in fewer life-years lost. DOMINATED: results in more life-years lost and higher costs than an alternative strategy.

The ICER is the difference between two strategies in costs divided by the difference in life-years.

Strategies are listed in order of ascending costs, per convention of cost-effectiveness analysis.

Table S8. Sensitivity analysis: varying the efficacies of contact tracing and mass symptom screening.

Efficacies of contact tracing and mass symptom screening for case detection	Strategy	Total life-years lost, n	Total health care costs over 360 days, 2019 USD	ICER, 2019 USD/YLS
Changed to 50% of base case value (less efficacious)	<i>HT</i>	487,290	668,000,000	--
	<i>HT+CT</i>	418,750	684,000,000	250
	<i>HT+CT+IC</i>	284,790	912,000,000	1,700
	<i>HT+CT+IC+MS</i>	279,680	934,000,000	4,340
	<i>HT+CT+IC+QC</i>	174,960	1,402,000,000	4,470
	<i>HT+CT+IC+MS+QC</i>	190,860	1,419,000,000	DOMINATED
Base case	<i>HT</i>	487,290	668,000,000	--
	<i>HT+CT</i>	320,760	704,000,000	220
	<i>HT+CT+IC+MS</i>	116,220	776,000,000	350
	<i>HT+CT+IC</i>	152,760	798,000,000	DOMINATED
	<i>HT+CT+IC+MS+QC</i>	24,340	1,511,000,000	8,000
	<i>HT+CT+IC+QC</i>	32,070	1,569,000,000	DOMINATED
Changed to 200% of base case value (more efficacious)	<i>HT+CT+IC+MS</i>	13,050	288,000,000	--
	<i>HT+CT+IC</i>	20,150	357,000,000	DOMINATED
	<i>HT+CT</i>	141,330	666,000,000	DOMINATED
	<i>HT</i>	487,290	668,000,000	DOMINATED
	<i>HT+CT+IC+MS+QC</i>	3,120	2,283,000,000	dominated
	<i>HT+CT+IC+QC</i>	2,700	2,283,000,000	192,650

USD: United States dollars. ICER: incremental cost-effectiveness ratio. YLS: year-of-life saved. HT: healthcare testing. CT: contact tracing within households. IC: isolation centre. MS: mass symptom screen. QC: quarantine centre. dominated: results in higher ICER than an alternative strategy that results in fewer life-years lost. DOMINATED: results in more life-years lost and higher costs than an alternative strategy.

The ICER is the difference between two strategies in costs divided by the difference in life-years.

Strategies are listed in order of ascending costs, per convention of cost-effectiveness analysis.

Table S9. Sensitivity analysis: varying the efficacies of isolation and quarantine centres.

Efficacies of isolation and quarantine centres in transmission reduction, %	Strategy	Total life-years lost, n	Total health care costs over 360 days, 2019 USD	ICER, 2019 USD/YLS
75 (less efficacious)	<i>HT</i>	487,290	668,000,000	--
	<i>HT+CT</i>	320,760	704,000,000	220
	<i>HT+CT+IC+MS</i>	207,170	921,000,000	1,990
	<i>HT+CT+IC</i>	235,700	924, 000,000	DOMINATED
	<i>HT+CT+IC+MS+QC</i>	122,460	1,880,000,000	11,320
	<i>HT+CT+IC+QC</i>	128,990	1,898,000,000	DOMINATED
95 (base case)	<i>HT</i>	487,290	668,000,000	--
	<i>HT+CT</i>	320,760	704,000,000	220
	<i>HT+CT+IC+MS</i>	116,220	776,000,000	350
	<i>HT+CT+IC</i>	152,760	798,000,000	DOMINATED
	<i>HT+CT+IC+MS+QC</i>	24,340	1,511,000,000	8,000
	<i>HT+CT+IC+QC</i>	32,070	1,569,000,000	DOMINATED
99 (more efficacious)	<i>HT</i>	487,290	668,000,000	--
	<i>HT+CT</i>	320,760	704,000,000	dominated
	<i>HT+CT+IC+MS</i>	92,940	725,000,000	150
	<i>HT+CT+IC</i>	127,570	766,000,000	DOMINATED
	<i>HT+CT+IC+MS+QC</i>	17,740	1,477,000,000	10,000
	<i>HT+CT+IC+QC</i>	21,430	1,521,000,000	DOMINATED

USD: United States dollars. ICER: incremental cost-effectiveness ratio. YLS: year-of-life saved. HT: healthcare testing. CT: contact tracing within households. IC: isolation centre. MS: mass symptom screen. QC: quarantine centre. dominated: results in higher ICER than an alternative strategy that results in fewer life-years lost. DOMINATED: results in more life-years lost and higher costs than an alternative strategy.

The ICER is the difference between two strategies in costs divided by the difference in life-years.

Strategies are listed in order of ascending costs, per convention of cost-effectiveness analysis.

Table S10. Sensitivity analysis: varying the cost of isolation and quarantine centres.

Cost of isolation and quarantine centres	Strategy	Total life-years lost, n	Total health care costs over 360 days, 2019 USD	ICER, 2019 USD/YLS
Base case	<i>HT</i>	487,290	668,000,000	--
	<i>HT+CT</i>	320,760	704,000,000	220
	<i>HT+CT+IC+MS</i>	116,220	776,000,000	350
	<i>HT+CT+IC</i>	152,760	798,000,000	DOMINATED
	<i>HT+CT+IC+MS+QC</i>	24,340	1,511,000,000	8,000
	<i>HT+CT+IC+QC</i>	32,070	1,569,000,000	DOMINATED
Isolation centre and quarantine centre costs changed to 25% of base case values	<i>HT+CT+IC+MS+QC</i>	24,340	604,000,000	--
	<i>HT+CT+IC+MS</i>	116,220	649,000,000	DOMINATED
	<i>HT+CT+IC+QC</i>	32,070	661,000,000	DOMINATED
	<i>HT+CT+IC</i>	152,760	662,000,000	DOMINATED
	<i>HT</i>	487,290	668,000,000	DOMINATED
	<i>HT+CT</i>	320,760	704,000,000	DOMINATED
Isolation centre and quarantine centre costs changed to 50% of base case values	<i>HT</i>	487,290	668,000,000	--
	<i>HT+CT+IC+MS</i>	116,220	691,000,000	60
	<i>HT+CT</i>	320,760	704,000,000	DOMINATED
	<i>HT+CT+IC</i>	152,760	708,000,000	dominated
	<i>HT+CT+IC+MS+QC</i>	24,340	905,000,000	2,320
	<i>HT+CT+IC+QC</i>	32,070	962,000,000	DOMINATED
Isolation centre and quarantine centre costs changed to 200% of base case values	<i>HT</i>	487,290	668,000,000	--
	<i>HT+CT</i>	320,760	704,000,000	220
	<i>HT+CT+IC+MS</i>	116,220	945,000,000	1,180
	<i>HT+CT+IC</i>	152,760	980,000,000	DOMINATED
	<i>HT+CT+IC+MS+QC</i>	24,340	2,723,000,000	19,350
	<i>HT+CT+IC+QC</i>	32,070	2,783,000,000	DOMINATED

USD: United States dollars. ICER: incremental cost-effectiveness ratio. YLS: year-of-life saved. HT: healthcare testing. CT: contact tracing within households. IC: isolation centre. MS: mass symptom screen. QC: quarantine centre. dominated: results in higher ICER than an alternative strategy that results in fewer life-years lost. DOMINATED: results in more life-years lost and higher costs than an alternative strategy.

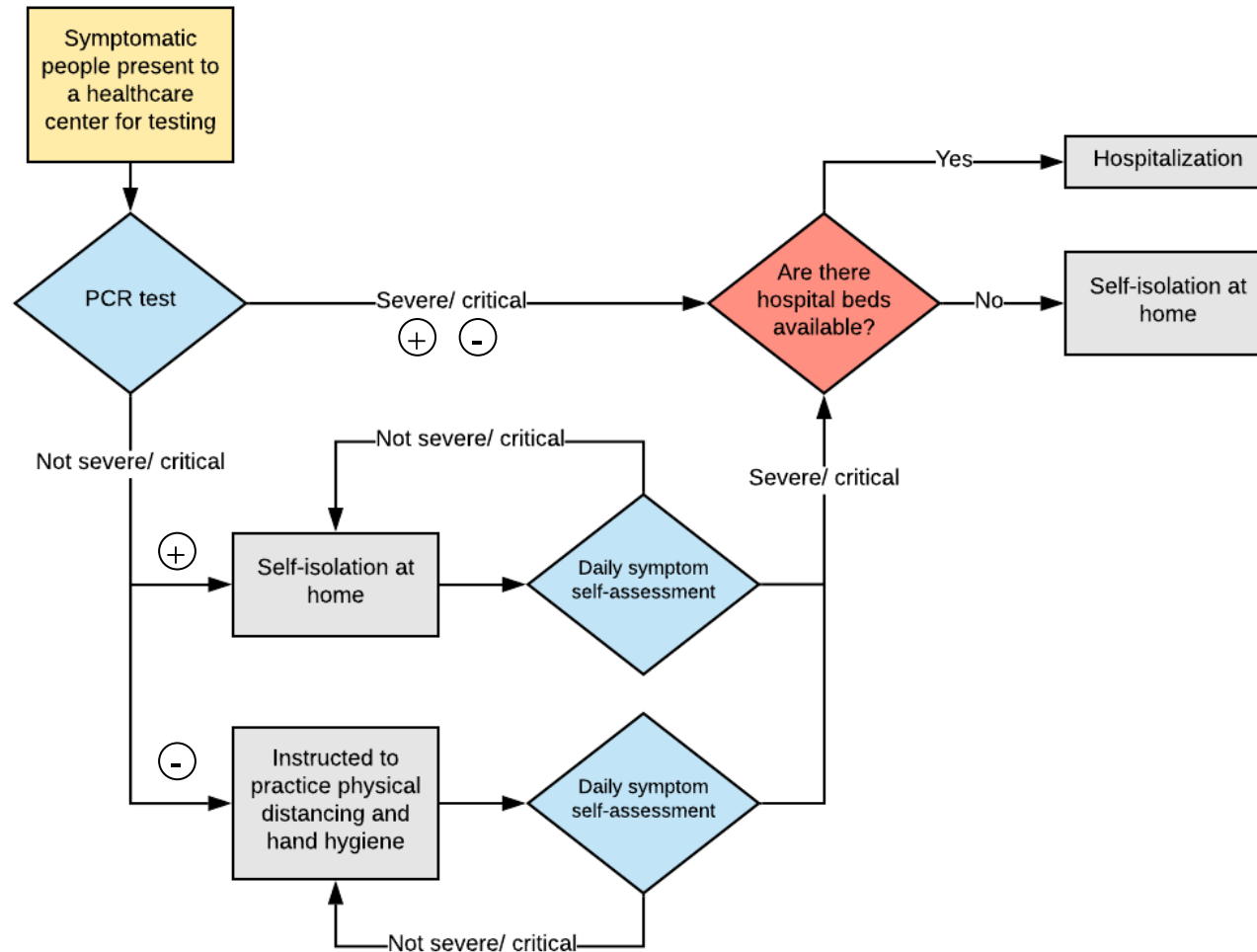
The ICER is the difference between two strategies in discounted costs divided by the difference in life-years.

Strategies are listed in order of ascending costs, per convention of cost-effectiveness analysis.

In the base case, isolation centres cost \$44/person/day and quarantine centres cost \$37/person/day.

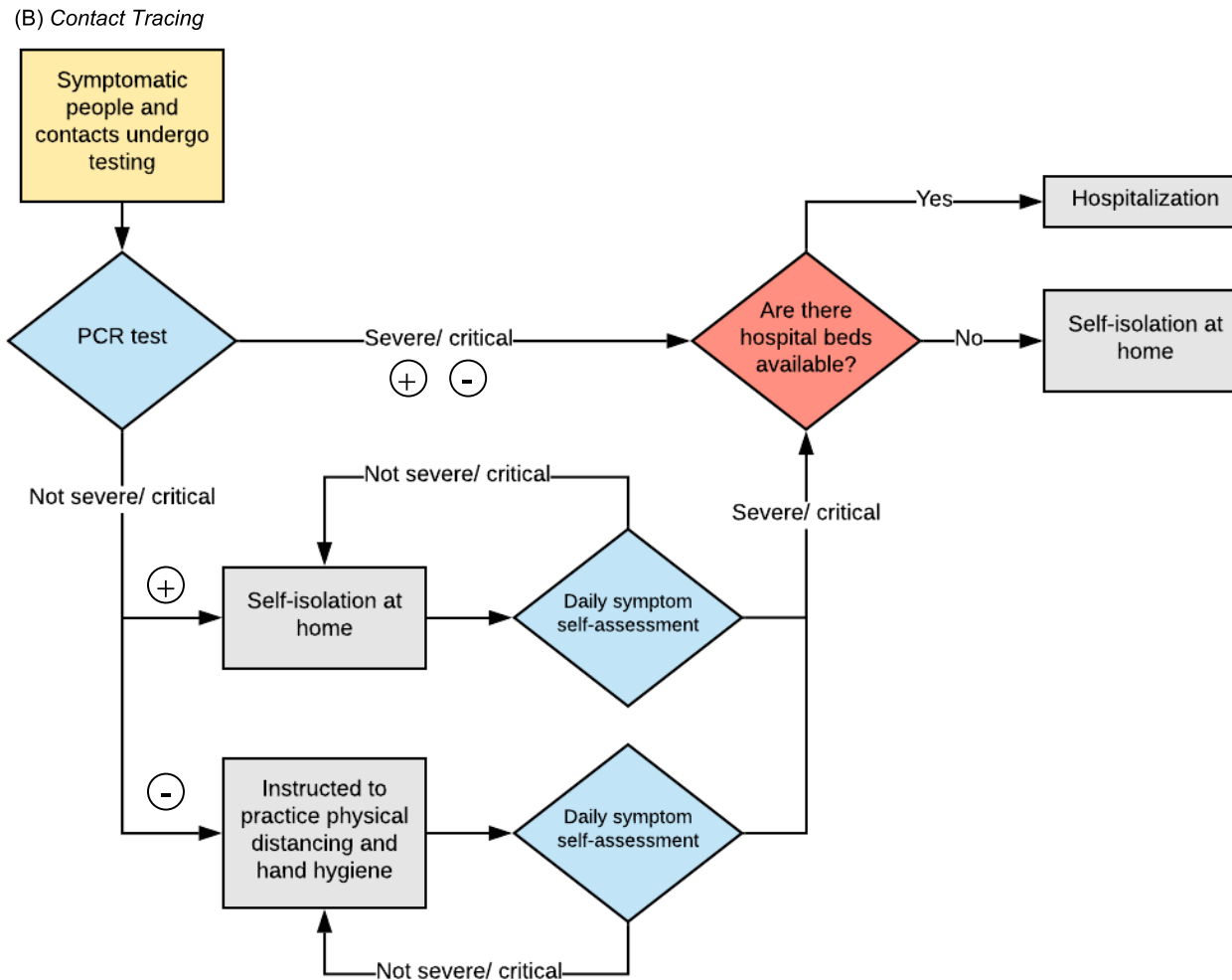
Figure S1. Model flowcharts of select COVID-19 epidemic control strategies in KwaZulu-Natal, South Africa.

(A) Healthcare Testing



After providing a specimen for testing and while awaiting the result, hospitalised individuals are isolated and non-hospitalised individuals are advised to self-isolate at home. Test results are acted upon (an intervention is started) on the day the result is delivered.

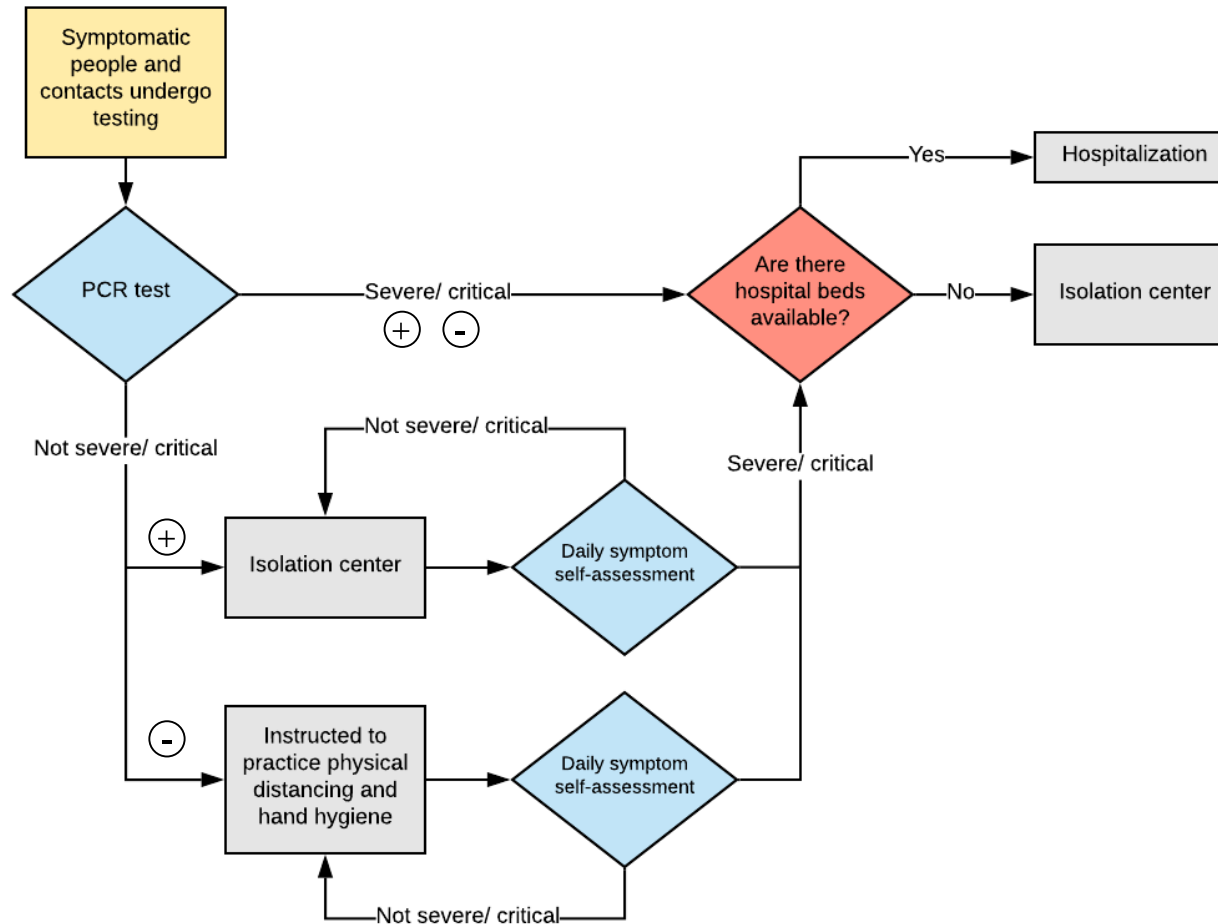
Figure S1 continued. Model flowcharts of select COVID-19 epidemic control strategies in KwaZulu-Natal, South Africa.



“Contacts” can be symptomatic or asymptomatic. After providing a specimen for testing and while awaiting the result, hospitalised individuals are isolated and non-hospitalised individuals are advised to self-isolate at home. Test results are acted upon (an intervention is started) on the day the result is delivered.

Figure S1 continued. Model flowcharts of select COVID-19 epidemic control strategies in KwaZulu-Natal, South Africa.

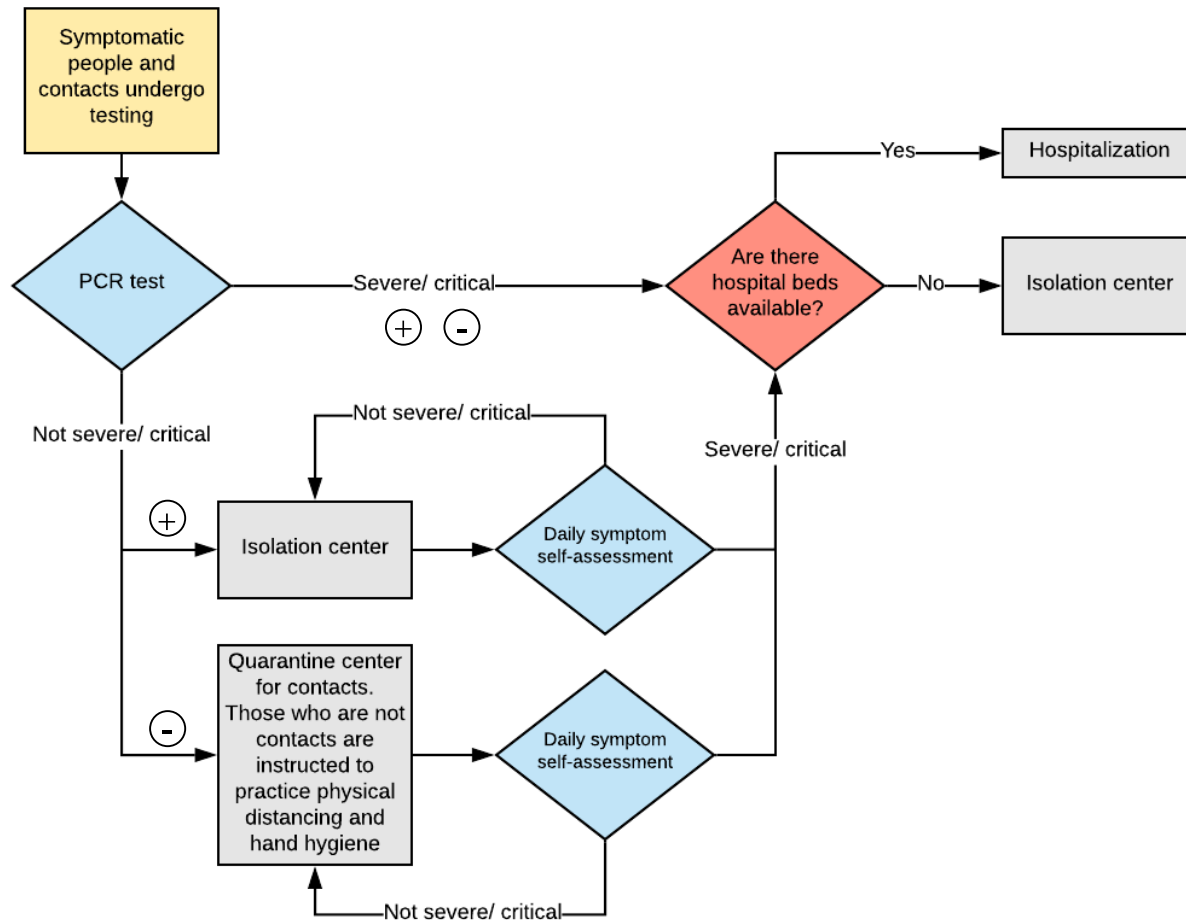
(C) Contact Tracing + Isolation Center



“Contacts” can be symptomatic or asymptomatic. After providing a specimen for testing and while awaiting the result, hospitalised individuals are isolated and non-hospitalised individuals are advised to self-isolate at home. Test results are acted upon (an intervention is started) on the day the result is delivered.

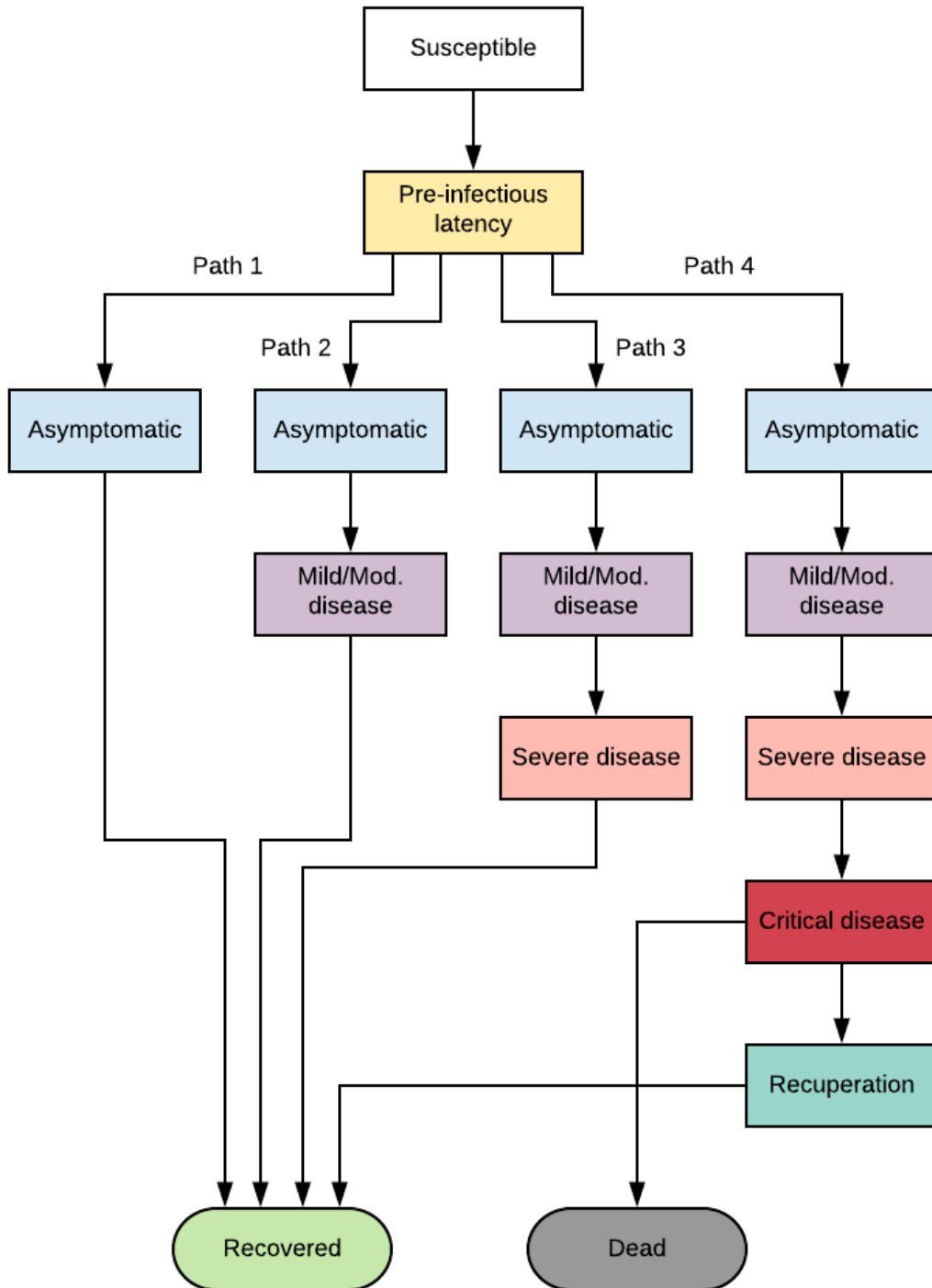
Figure S1 continued. Model flowcharts of select COVID-19 epidemic control strategies in KwaZulu-Natal, South Africa.

(D) Contact Tracing + Isolation Center + Quarantine Center



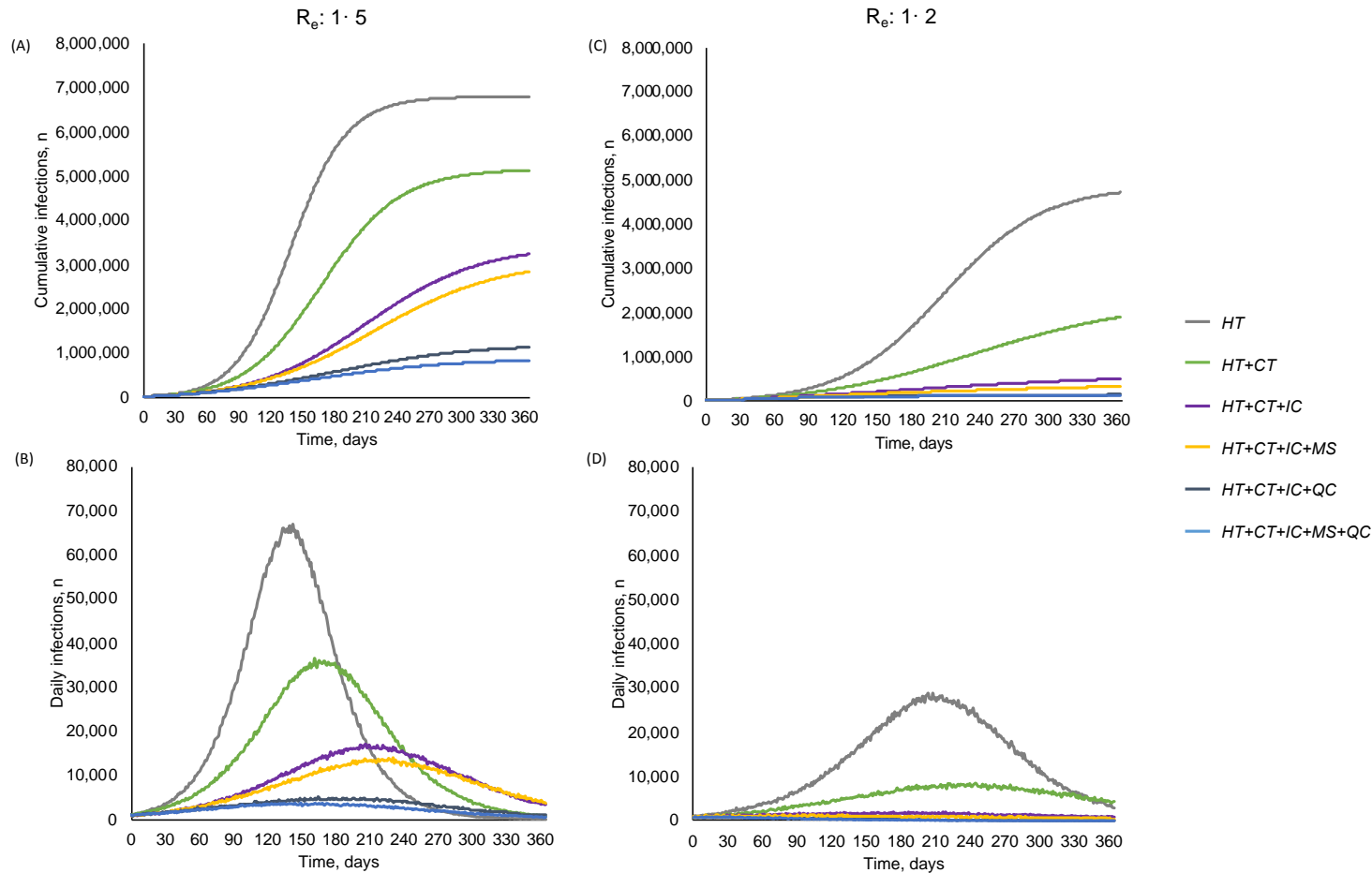
“Contacts” can be symptomatic or asymptomatic. After providing a specimen for testing and while awaiting the result, hospitalised individuals are isolated and non-hospitalised individuals are advised to self-isolate at home. Test results are acted upon (an intervention is started) on the day the result is delivered.

Figure S2. Illustration of health states and disease paths in the CEACOV model.



CEACOV: Clinical and Economic Analysis of COVID Interventions. Mod.: moderate.

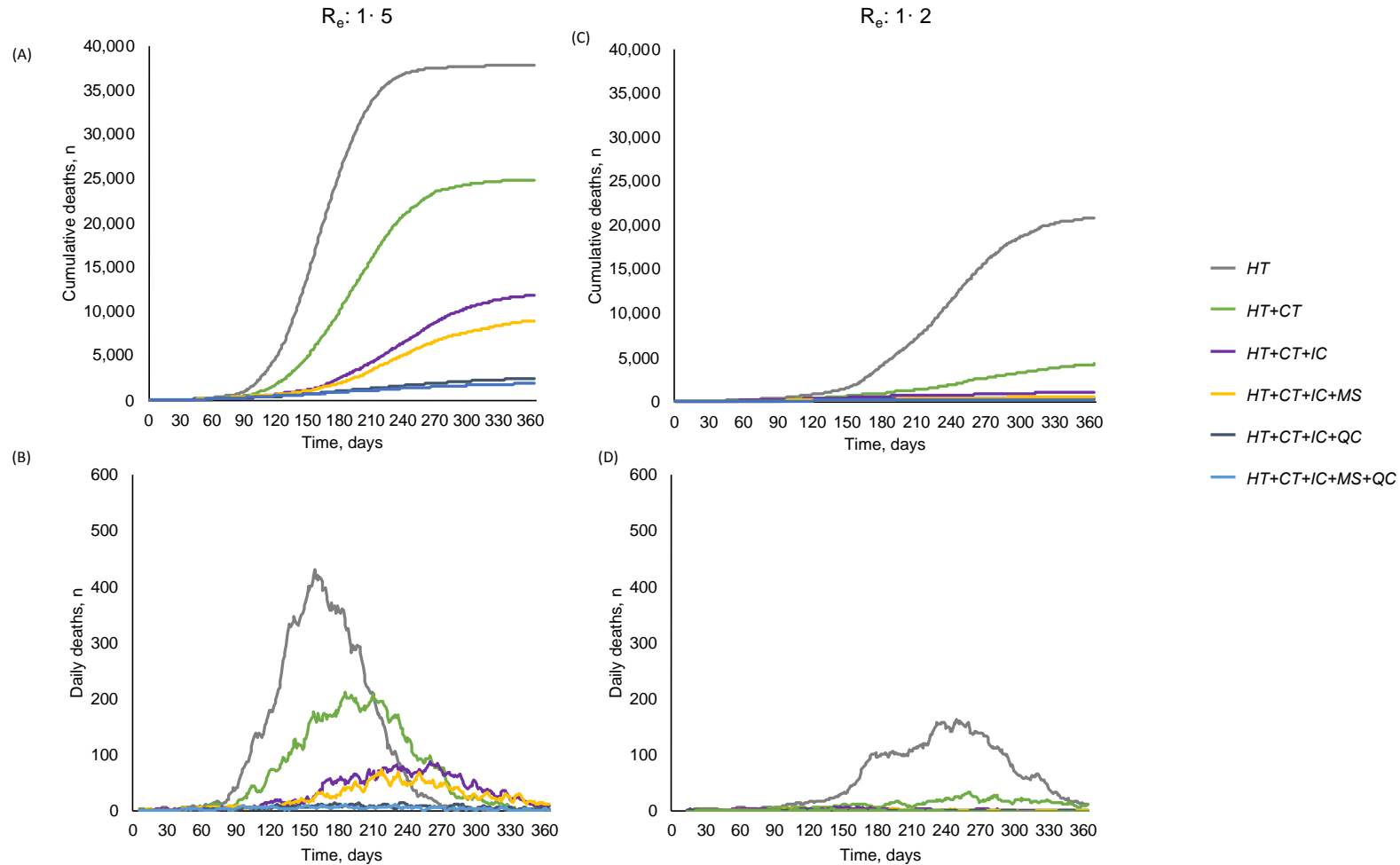
Figure S3. Model-projected cumulative and daily SARS-CoV-2 infections by intervention strategy in KwaZulu-Natal, South Africa.



SARS-CoV-2: severe acute respiratory syndrome coronavirus 2. R_e : effective reproduction number. HT: healthcare testing. CT: contact tracing within households. IC: isolation centre. MS: mass symptom screen. QC: quarantine centre.

Panels A and B show model results with $R_e=1.5$. Panels C and D show model results with $R_e=1.2$. Panels A and C depict cumulative SARS-CoV-2 infections (both detected and undetected) over time by intervention strategy. Panels B and D depict daily SARS-CoV-2 infections. In each panel, time 0 on the horizontal axis represents the start of model simulation, with SARS-CoV-2 infection prevalence of 0.1% (~11,000 individuals with SARS-CoV-2 infection in KwaZulu-Natal, South Africa).

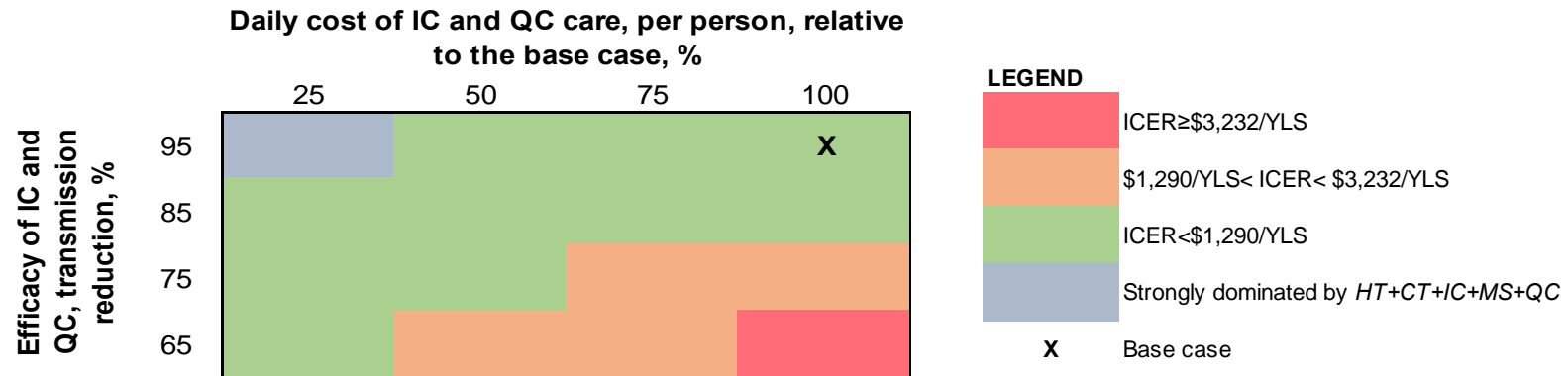
Figure S4. Model-projected cumulative and daily COVID-19 deaths by intervention strategy in KwaZulu-Natal, South Africa.



COVID-19: coronavirus diseases 2019. R_e : effective reproduction number. HT: healthcare testing. CT: contact tracing within households. IC: isolation centre. MS: mass symptom screen. QC: quarantine centre.

Panels A and B show model results with $R_e=1.5$. Panels C and D show model results with $R_e=1.2$. Panels A and C depict cumulative COVID-19 deaths over time by intervention strategy. Panels B and D depict 7-day averages of daily deaths due to COVID-19. In each panel, time 0 on the horizontal axis represents the start of model simulation, with SARS-CoV-2 infection prevalence of 0.1% (~11,000 individuals with SARS-CoV-2 infection in KwaZulu-Natal, South Africa).

Figure S5. Two-way sensitivity analysis: cost-effectiveness of *HT+CT+IC+MS* as a function of the efficacies and costs of isolation and quarantine centre care.



HT: healthcare testing. CT: contact tracing within households. IC: isolation centre. MS: mass symptom screen. QC: quarantine centre. ICER: incremental cost-effectiveness ratio. YLS: year-of-life saved.

ICERs for *HT+CT+IC+MS* are calculated compared with the next least costly strategy. In the base case, isolation centres and quarantine centres reduce transmission by 95%; isolation centre care costs \$43·60/person/day and quarantine centre care costs \$36·90/person/day.

The ICERs indicated in the legend are opportunity cost-based thresholds for South Africa reported by Woods et al.¹ After converting to 2019 United States dollars, the lower end of the reported range is \$1,290, and the midpoint of the range is \$3,232.